

CORNER
RESTORATION
T149 R27W

KY
FIELD BOOK

820012

BOOK NO. 2

CORNER RESTORATION T149 R27W

DI

→
cutCut of
Fill0
1
2
3
4
5
6
7
8
9
10
11
12
13
14
15
16
17
18
19
20
21
22
23
24
25
26
27
28
29
30
31
32
33
34
35
36
37
38
39
40

KEUF:

USFS
T149N - R27W

Book #2

					40			
39	6	27	5	4	40	3	41	2
38	26	24	25				42	
37	7	28	8	9		10		11
29	16	14	15					12
30	18	13	17	16		15		14
31	12	10	11					13
32	19	7	20	21		22	23	28
33	8	6	7			44	43	24/47 46
34	30	5	29	28		27	26	25
35 ₄₅	4	2	3					
36	31	1	32	33		34	35	36

X-5

DI 1/4 Between Sections 31-32
Original Gov't. survey notes of 1875

Set Post

Fir 5 inch N50°E 4 1/2" - 2.64'

Fir 5 inch N58°W 5 1/2" - 3.30'

North

46.00 Entertam. Swamp E+W

80.00 Sec. Cor.

Out of
File

0
1
2
3
4
5
6
7
8
9
10
11
12
13
14
15
16
17
18
19
20
21
22
23
24
25
26
27
28
29
30
31
32
33
34
35
36
37
38
39
40

DI

Sec. Cor. to Secs. 29-30-31-32

Original Gov't. survey notes of 1875

Set Post

Tamarack 6" S57°E 11 1/2S - 7.26'

Tamarack 5" S58°W 7 1/2S - 4.62'

Tamarack 5" N73°E 3 1/2S - 1.98'

Tamarack 6" N56°W 17 1/2S - 11.22'

See Book 1
Page 1

East

6.00 Leave swamp NW & SE

20.00 Enter swamp N & SE

40.00 Set temp. 1/4 cor. in swamp

45.00 Leave swamp N & S

60.75 Creek 26.40 feet runs SE

69.00 Enter tam. swamp NW & SE

80.24 Intersect line 46.20' S of Cor

Cut or
Fill0
1
2
3
4
5
6
7
8
9
10
11
12
13
14
15
16
17
18
19
20
21
22
23
24
25
26
27
28
29
30
31
32
33
34
35
36
37
38
39
40

V-7
Quarter Between Secs. 2932

Original Govt. survey notes of 1875

Set Post

Tamarack 5 inch $N49^{\circ}W$ 72 1/2' - 47.52'

Tamarack 4 inch $S37^{\circ}W$ 18 1/2' 11.88'

3
West

11.50 Leave swamp N4S

19.00 Enter tam. swamp N4S

33.00 Leave tam. swamp N4S

40.00 Set temp. 1/4 cor

79.50 Intersect line 33.00' N of Cor.

V4 Between ^{secs.} 30-31

V-3

Original Gov't. survey notes of 1875

Set Post

B. Ash 8" N50W 35 1/2 S - 23.10'

Spruce 9" S58°W 35 1/2 S - 23.10'

North

17.50 Leave swamp E+W

34.50 Open tam. swamp E+W

40.00 1/4 Cor.

7-5
1/4 Between Secs. 29-30

Original Gov't. survey notes of 1875

Set Post

~~Tamarack 7" S58°E 7 lks = 462'~~

~~Tamarack 6" S67°W 5 lks = 330'~~

ORIG. GOV'T. SURVEY 1875

MKD. 4" SPRUCE TREE AS COR.

TAM. 7 S58E 7 LKS. = 462'

SPRUCE 6 S67W 5 LKS. = 330'

10/22/96 GB+CK

SEARCH IN AREA OF QUAD POSITION - Fd. OLD N4S

BLAZED LINE IN BLK. SPRUCE SWAMP JUST SOUTH

OF FR# 2231E - Fd. SOME BLAZES WEST IN SWP.

APPROX. 200' SOUTH OF ROAD - NO EVIDENCE OF

CORNER COULD BE FOUND TODAY

10/24/96 RM-CK

G.P.S. POSITION TODAY

10/28/96 CK

SO BACK TO G.P.S. POSITION AND RUN N21E - S6.0'

THIS WOULD FALL NORTH OF FR 2231E

5
North

59.00 Leave swamp E+W

80.00 Sec. Cor.

North true line hit sec 29-30

Tan 11°30'

From cor in swamp

17.50 Leave swamp E+W

24.50 Open Tam swamp E+W

40.00 Spruce tree 4 in in swamp for 1/4 sec on fork

Tam 7 1 58 6

Spruce 6 1 67 7 5

59.00 Leave swamp E+W

80.00 Hit asphalt post 4x5 for cor to sec 19-20-29-30 for

CONTINUED FROM OTHER PAGE

APPROX. CORNER FALLS IN HEAVY BALSAM+SPRUCE

WINDFALLS 40' NORTH OF NW-SE WOODS TRAIL

OLD BLAZED LINE FROM SOUTH WOULD FALL 35' W

OF G.P.S. POSITION AND OLD BLUE PAINT WOULD

FALL 45' W OF G.P.S. POSITION

NO OLD TAG COULD BE FOUND OR ANY OTHER

EVIDENCE AT THIS TIME

ESLP ON 7" BALSAM ON SOUTH SIDE AS APPROX.

1/4 COR. - THIS IS ALSO G.P.S. POSITION

MKD ON TAG 2632' N4S

Sec. Cor. to Secs. 19-20-29-30

Original Govl. survey notes of 1875

Set Post

Spruce 5" S89°E 6 lks. 3.96'

Spruce 24" S120°W 24 lks. 15.84'

Tamarack 20" N63°W 5 lks. 3.30'

Fir 10" N20°E 15 lks. 9.90'

See Book 1
Page 6

East

2.50 Enter tam. swamp NW & SE

23.00 Creek 19.80' runs SE

29.50 Creek 19.80' runs W

34.00 Creek 19.80' runs SW

40.00 Set temp. $\frac{1}{4}$ cor in swamp

63.00 Leave swamp NW & SE

70.00 Enter tam. swamp N & S

79.90 Intersect line 23.76' S. of cor.

1/4 Between Secs. 20-29

Original Gov't. survey notes of 1875

Set Post

Tamarack 4" S73°W 3/4S- 1.98'

Tamarack 4" N17°E 5/4S- 3.30'

West

13.00 Creek 5.28' runs NE

40.00 Set temp. 1/4 Sec. Cor.

43.00 Enter tam. swamp NE & SW

53.00 Leave tam. swamp NE & SW

80.50 Intersect line 46.20' S. of cor

1/4 1/4 Between Secs. 19-30

0 Original Govt. survey notes of 1825

Set Post

Spruce 8" S21°W 63 1/2 - 41.58'

1 Aspen 1 1/4" N44°W 18 1/2 - 11.88'

North

13.00 Enter tam. swamp NE + SW

20.00 Leave tam. swamp NE + SW

31.50 Enter tam. swamp E + W

38.00 Creek 3.30' x 425 SE

40.00 1/4 Cor.

1/4 Between Secs. 19-20

Original Gov't. survey notes of 1875

Set Post

Spruce 7" S83°E 71ks- 4.62'

Tamarack 12" N82°W 141ks- 9.24'

North

55.00 Leave swamp E+W

65.00 Enter tam. swamp E+W

75.50 Creek 13.20' runs SE

80.00 Sec. Cor.

N-5
Sec. Cor. to Secs. 17-18-19-20

Original Gov't. Survey notes of 1875

Set Post

Tamarack 9" S38°W 181K5 - 11.88'

Tamarack 6" S74°E 141K5 - 9.24'

Spruce 8" N45°W 121K5 - 7.92'

Spruce 7" N37°E 481K5 - 31.68'

See Book #1
Page #3

10
East

40.00 Set temp. 1/4 Sec. Cor. in swamp

44.00 Leave Swamp N+S

73.00 Enter tam. swamp NW & SE

79.80 Intersect line 59.40' S. of cor.

N-7
1/4 Between Secs. 17-20

Original Gov't. survey notes of 1875

Set Post

Spruce 10" S70°E 18 1/2 - 11.88'

Tamarack 12" N21°E 14 1/2 - 9.24'

11
West

4.00 Creek 9.90' runs S, leave swamp N 1/2 S

40.00 Set temp. 1/4 sec. cor.

80.26 Intersect line 59.40' S. of Cor.

1/4 Between Secs. 18-19

N-3

Original Govt. survey notes of 1875

Set Post

Aspen 7" N66°E 12 1/2 - 7.92'

W. Birch 10" South 17 1/2 - 11.22'

3-22-2001 MAIN

LINE TO STANDARD EAST AND WEST OF CORNER

8 FT STEEL SIGN POST 3.95' WEST.

North

40.00 1/4 Cor.

12

2-5
1/4 Between Secs. 17+18

Original Gov't. survey notes of 1875

Set Post

Spruce 12" S81°E 23 1/2s - 15.18'

Spruce 8" S89°W 8 1/2s - 5.28'

NOTES BY JOHN J. ROSE 11-25-27

FOLDER 13 Pg. 149

SET OVER HUB AT STA. 5143.2 ON E+W

CORRECTED LINE

RANDOM LINE SOUTH 2682' - CROSS E+W

1/4 LINE - 106.05' EAST OF 1/4 17+18

13
North

50.50 Leave Swamp NE+SW

80.00 Sec. Cor.

3-22-90 GB-CK

FROM APPROX. SEC. COR. 7-8-17-18 - RAN LINE

AT S3W - CHAINED 2683' AND ESTABLISH

APPROX 1/4 COR. - PLACED FSLP ON 12" ASH

S87°E N87W - 11.0' FROM PICKET AT ROSE'S DISTANCE

FROM NORTH - NO TRACE OF ORIG. COR.

SEARCHED FOR ABOUT 2 HRS. IN AREA - Fd.

ROTTED + BURNT SPRUCE STUMPS

12-3-90 GB-CK-MH

FROM FS BC 2" IRON PIPE AT SECTION COR.

17-18-19-20 - RAN LINE NORTH - 1220' N

OF COUNTY ROAD #29 - CONTINUE NORTH TO STA.

2653' N - THEN 35' W TO TAG PLACED ON 3-22-90

APPROX. CORNER SAME AS ESTABLISHED ON

3-22-90 FSLP ON ASH 12 N87W 11.0' TO APPROX

SEARCH AGAIN FOR 1 HR. - NO OTHER EVIDENCE

WAS FOUND AT THIS TIME - BOTH SEARCHES

WITH SNOW COVER AND FROZEN GROUND

5/20/94 RM CK

Fd. TAG ON ASH - SEARCH IN AREA

FROM TAG N87W 11' TO APPROX. COR.

Sec. Cor. to Secs. 7-8-17-18

Original Gov't. Survey notes of 1875

Set Post

Aspen 6" N46°E 20 1/2 S - 13.20'

Aspen 8" N63°W 34 1/2 S - 22.44'

Aspen 8" S2°W 40 1/2 S - 26.40'

W. Birch 8" S67°E 65 1/2 S - 42.90'

NOTES BY JOHN ROSE 11-17-27

FOLDER 13 Pg. 144 - LINE BET. 8+17

FOLDER 13 Pg. 149 - LINE SOUTH BET. 17+18

East

2.00 Enter tam. swamp NE & SW

16.00 Leave tam. swamp NE & SW

40.00 Set temp. 1/4 Sec. Cor.

63.00 Enter spruce swamp N & S

80.40 Intersect line 46.20' S of cor. in swamp

3-21-90 GB-CK

CHAINED WEST FROM APPROX. 1/4 BET. SEC'S. 8+17

2571' W - PLACED FSLP ON WEST SIDE OF

6" BIRCH - APPROX. SEC. CORNER IS 18.5' WEST

OF TAG ON BIRCH

3-22-90 GB-CK

FROM APPROX. SEC. COR. 7-8-17-18 - RAN LINE

S3W - 2683'

1/4 Bet ween Secs. 8-17

Original Gov't. survey notes of 1875

Set Post

W Birch 10" S30°W 23 lks. 15.18'

Spruce 9" N2°W 18 lks. 11.88'

874 CCC NOTES By O.W. SHERMAN 1-23-34

Fd. POST 4" X 36" SCRIBED

Fd. BIRCH 14 S20W - 25 LKS.

FSLP ON BIRCH 8 S. 5 CHS. WEST OF 1/4 COR.

(BT BIRCH) TREE OLD - BLAZE ROTTED

West

40.00 Set temp 1/4 Sec. Cor.

42.00 Enter tom. swamp N+S

49.00 Creek 6.60' runs S.

1/4 Between Secs. 7-18

Original Gov't. survey notes of 1875

Set Post

Spruce 8" N45°W 12 lks - 7.92'

Spruce 7" N87°E 48 lks - 31.68'

874 CCC NOTES By C. W. SHERMAN 1-23-34

Fd. POST (GOOD CONDITION) 2" x 4"

Fd. POPLAR 7" S3W 22 lks. = 14.52'

FSLP ON 6" ELM — —

East

40.00 Set temp. 1/4 sec. cor. in swamp

44.00 Leave swamp N45

73.00 Enter tom. swamp NW & SE

79.80 Intersect line 59.40' S. of Cor.

~~1/4 Between Secs. 17-20~~

~~Original Gov't. survey notes of 1875~~

~~Set Post~~

~~Spruce 10" S70°E 18.1Ks - 11.88'~~

~~Tamarack 12" N21°E 14.1Ks - 9.24'~~

~~West~~

~~4.00 Creek 9.90' runs S., leave swamp N+S~~

~~40.00 Set temp. 1/4 Sec. Cor.~~

~~80.26 Intersect line 59.40' S. of cor.~~

N-3
~~1/4 Between Secs 18-19~~

~~Original Govt. survey of 1875~~

~~Set Post~~

~~Aspen 7" N66°E 121Ks - 7.92'~~

~~W Birch 10" South 171Ks - 11.22'~~

~~North~~

~~40.00 1/4 Cor.~~

~~1/4 Between Secs. 17-18~~

~~Original Gov't. survey notes of 1875~~

~~Set Post~~

~~Spruce 12" S81°E 23/ks - 15.18'~~

~~Spruce 8" S89°W 8/ks - 5.28~~

~~North~~

~~50.50 Leave swamp NE + SW~~

~~80.00 Section Cor.~~

Sec. Cor. to Secs. 7-8-17-18

Original Govt. survey notes of 1875

Set Post

Aspen 6" N46°E 20 IKS- 13.20'

Aspen 8" N63°W 34 IKS- 22.44'

Aspen 8" S2°W 40 IKS- 26.40'

W. Birch 8" S67°E 65 IKS- 42.90'

East

~~2.00 Enter tam. swamp NE + SW~~

~~16.00 Leave tam. swamp NE + SW~~

~~40.00 Set Temp. Vg. Cor.~~

~~63.00 Enter spruce swamp N + S~~

~~80.40 Interset line 46.20' S. of Cor. in swamp~~

1/4 Between Secs. 8-17

Original Govt. survey notes of 1875

Set Post

W. Birch 10" S30°W 23 1/2 - 15.18'

Spruce 9" N2°W 18 1/2 - 11.88'

West

40.00 Set temp. 1/4 cor.

42.00 Enter ^{top} Swamp NTS

49.00 Creek 6.60' runs south

68.00 Leave swamp NTS

79.60 Intersect line 19.80' South of cor.

1/4 Between Secs. 7-18

Original Gov't. survey of 1875

Set Post

Spruce 6" S24°W 61 1/2 - 40.26'

Spruce 6" N29°E 10 1/2 - 6.60'

~~North~~

~~40.00 1/4 cor.~~

1/4 Between Secs. 7-8

Original Gov't. survey of 1875

Set Post

Maple 6" N31°E 24 1/5 - 15.84'

Basswood 10" N34°W 26 1/5 - 17.16'

North

42.00 Enter tam. Swamp NE & SW

68.00 Leave tam. swamp NE & SW

80.00 Sec. Cor.

Sec. Cor. to Secs. 5-6-7-8

Original Gov't. Survey notes of 1825

Set Post

Spruce 8" N20°E 44 lks - 29.04'

Fix 6" N48°W 20 lks - 13.20'

Fix 7" S60°E 71 lks - 46.86'

Fix 6" S88°W 14 lks - 9.24'

NOTES By JOHN J. ROSE 1927 FOLDER 13 - PAGE 153

CORNER SET PROPORTIONATE - 2593.2' TO 3/4 SEC. 5

BIRCH 20 N45 3/4 E 23.4'

BIRCH 12 N32W 2.9'

ASH 6 S47 1/4 W 21.2'

ASH 6 S17 1/4 E 24.8'

East

40.00 Set temp. 1/4 Cor.

52.00 Enter tom. swamp N45

79.60 Intersect line 59.40' South of Cor.
in swamp

874 By HARRISON ADAMS 8/30/38

Fd. BIRCH POST - GOOD CONDITION - 25" HIGH - SCRIBED "1/SEC'S.

Fd. BIRCH 10 NORTH 6 LKS. 39' MKD T149 R27 S6 BT

BIRCH 16 N45E 35 LKS. 23.1 " T149 R27 S6 BT

ASH 6 S88E 37 LKS. 24.4' T149 R27 S8 BT

ASH 7 S45W 32 LKS. 21.1'

E-7

 $\frac{1}{4}$ Between Secs. 5-8

Original Gov't. survey of 1875

Set Post

W. Birch 8" N60°E 10 LKS - 6.60'

W. Birch 10" S12°W 4 LKS - 2.64'

NOTES BY H. ADAMS (874) 8/29/34

Fd. TAM. POST 28" HIGH SCRIBED $\frac{1}{4}$ 55 + $\frac{1}{4}$ 58Fd. BIRCH 10 S10W 17 LKS. OR 11.2' MKD $\frac{1}{4}$ 58 BTBIRCH 5 N45E 17 LKS. OR 11.2' MKD $\frac{1}{4}$ 55 BT

6/6/89 Fd. rotted Birch stp. under spruce root at N51E 11.2

11/19/75 CK

NO POST FOUND AT THIS TIME

Fd. BIRCH STUB 10" X 8' HIGH SCRIBED $\frac{1}{4}$ 58 BTLYING ON GROUND. ^{6/6/89} STP IS S15W at 11.2 from post.

Fd. FSLP DATED 11-17-71 ON 6" BLK SPRUCE FACING

CORNER POSITION

SET 4X4X8' ASH POST AT TRUE CORNER POSITION

FROM BIRCH BT - PUT FSLP ON 8" BLK SPRUCE ^{Now dead} 6/6/89

N41E 12.6' FROM ASH POST

LEAVE SWP. AT 40' N + 70' W + 140' E

PUT FSLP ON 16 ELM 100' W OF COR. ON E SIDE

OF WOOD TRAIL NW+SE Dead on 6/6/89

25

West

C.C. Dore 11/15/89

40.00 Set temp. $\frac{1}{4}$ Cor.75.00 Creek 2.64' runs south enter tam.
swamp N+S

79.66 Intersect line 6.60' north of cor.

6/6/89 CK-CB

Fd. ^{top of} Ash post laying on the ground. Point of post
is set in place from Birch BT's recorded by Adams in
1934. Didn't find any evidence of any other post.Reset top of Ash post at $\frac{1}{4}$ corner position.Other ^{ash} post point is on south side. Good along side

Mkd. New BT's:

Ash 9' N70 E 47.8' $\frac{1}{4}$ 55 BT Single blaze 600Blk. Spruce 7" S08 E 50.8' $\frac{1}{4}$ 58 BT Double blaze 600Ash 7" S77 W 45.3 $\frac{1}{4}$ 58 BT " " "Ash 7" N54 W 12.65' $\frac{1}{4}$ 55 BT single blaze 600

NOTES BY JOHN J. ROSE DEC. 16 1927

FOLDER IS Pg. 90 - RAN N+S QUARTER LINE

SET TEMPORARY POST 4.2 EAST

SOUTH LINE OF SECTION 5 IS 5186.4' - 2593.2'

1/4 Between Secs. 6-7

Original Gov't survey notes of 1875

Set Post

Tamarack 7" N10°W 60 lks - 39.60'

Tamarack 10" S70°E 20 lks - 13.20'

North

34.00 Enter tam. swamp NE & SW

40.00 Set temp. 1/4 cor. in swamp

48.00 Leave swamp NE & SW

77.00 Enter small open marsh

79.80 Intersect line 14.52' east of Cor.

1/4 Between Secs. 5-6

Original Gov't. survey notes of 1875

Set Post

Tamarack 4" N30°E 26 1/2 - 17.16'

Tamarack 8" N45°W 35 1/2 - 23.10'

NOTES BY JOHN J. ROSE 1927 - FOLDER 13 - PAGE 153

CORNER SET PROPORTIONATE - N 1/2 2619.4 - S 1/2 2632.6

SET MAPLE POST

POPLAR 12 N63W 4.0'

POPLAR 16 N32E 8.5'

SOUTH $\frac{1}{16}$ BET. SEC'S. 23 & 24.

NOTES OF ITASCA COUNTY SECTION SUBDIVISION
OF SECTION 23, BY K.K. RUSSELL SURVEYOR 1924

SET BY PROPORTIONAL MEASUREMENT 1315.9 N4S

SET IRON MONUMENT FD. 1" X 15" IRON PIPE
IN PLACE

POPLAR 9 N78W 14.9'

FD. POPLAR STUMP AT N70W - 14.9'

POPLAR 10 S13E 30.7'

FD. POPLAR STUMP AT SSE - 30.7' FD. SCRIBE ON STA.

CC DONE

5-24-83 CK-JA-6B

CHAINED S2W 1315.9' FROM IRON PIPE FOUND AT
 $\frac{1}{4}$ CORNER TO NORTH, CROSS CREEK AT 1000'S
OF $\frac{1}{4}$ COR. FOUND 1" X 15" IRON PIPE 4" ABOVE GRO.
AT BASE OF HILL 25' HIGH TO WEST OF IRON
MARKED NEW B.T'S. 7-7-83 6B-JA

W. OAK 12 S57W - 25.60' MKD S $\frac{1}{16}$ S23 BT

W. OAK 18 S6E - 52.90' " " S24 BT

W. OAK 15 N35E - 40.13' " " " "

SECTION CORNER TO SECTIONS 7 & 18
 NOTES OF ORIG. GOV'T. SURVEY 1875
 SET ASH POST

SPRUCE 7. N20E 27 LKS. 17.82'

SPRUCE 8 S17E 56 LKS. 36.96'

SPRUCE 12 N71W 22 LKS. 14.5'

SPRUCE 8 S61W 41 LKS. 27.0'

NOTES BY JOHN J. ROSE RLS NOV. 17, 1927

FOLDER 13 PAGE 145

RANDOM LINE FELL 115' NORTH OF CORNER TO SEC'S.
 7 & 18

FOUND NEW POST SET BY COUNTY SURVEY OR

AND 1 BT A BIRCH STUB

117' WEST OF CREEK 4' WIDE ON RANDOM LINE

RANGE LINE WAS CHANGED BY G.A. RALPH IN 1896

AS HE FOUND ERROR IN CHAINING FOR 2 MILES

SEE ORIG. NOTES FOR T149N R28W

SEE BOOK 1 PAGE 33 T149N R28W FOR SEC. COR.'S
 TO SECTIONS 12 & 13

10/20/86 OK-1A-6B-KW

CHAIN ORIG. DISTANCE 2.18 CHS. OR 143.9' SOUTH OF SEC. COR. TO SEC'S.

12 & 13 - SEARCH IN AREA AT END OF CHAIN, FOUND MANY WELL

ROTTED STUMPS AROUND AREA - BELIEVE SOME ARE BALSAM

AND LARGER ONES ARE TAM. - WE FOUND A CEDAR SNAG WINDFALL

DOWN WHICH APPEARS TO HAVE BEEN BLAZED ON ALL 4 SIDES

WHICH FALLS NEAR THE DISTANCE 144' CHAINED SOUTH OF

ORIG. SEC. COR. TO NORTH. KEN WHITEHORN ITASCA COUNTY

SURVEYOR WAS WITH US AND HE SAID THEY ARE GOING TO

TRAVERSE THE RANGE LINE THIS WINTER AND THEY WOULD

SET A POINT NEAR THIS LOCATION - AND THEN LATER WE

WILL HAVE A POSITION TO SEARCH OR SET THIS CORNER.

QUARTER CORNER BET. SEC'S. 13 & 18

NOTES OF ORIG. GOVT. SURVEY 1875

SET SPRUCE POST

SPRUCE 8 N16E 12 LKS. 7.92'

BIRCH 9 S17W 21 LKS. 13.86'

NORTH TRUE LINE ON WEST BORDY OF SEC. 18

1617 FT

29.50 CHS. CREEK 4 LKS WIDE RUNS E

10/29/86 CK-68

FD. OLD CCC 6" CEDAR POST WITH OLD FSLP (NO DATE) ^{RUSTED SHOT UP}

STATES APPROX. COR. TO BE 2 CHS. 97 LKS. SOUTH

NEWER 6" CEDAR POST ^{4 LKS.} 5' SOUTH STATES APPROX. COR.

IS 2 CHS. (100 LKS.?) SOUTH TO 1/4 COR.

9/28/76 CK

CHAINED NORTH FROM APPROX. SEC. COR. TO SOUTH AND AT
2970' N BLAZED 8" ASPEN ON NORTH SIDE AND WROTE 2970' N
WITH FELT TIP PEN ON BLAZE AT 2545' N ^{1/4} OF ALWOOD
DOBA LAKE BLACKTOP ROAD CO. # 29 CONTINUE NORTH TO
2690' - 6" CEDAR POST WITH FSLP IS NW 75' FROM
END OF OUR CHAIN NORTH

3-22-2001 R. MAIN

8 FT STEEL SIGN POST 203 FT SOUTH
LINE TO STANDARD SOUTH OF CORNER.

SECTION CORNER TO SECTIONS 13-18-19-24

NOTES OF ORIG. GOVT. SURVEY 1875

SET LINDEN POST

SPRUCE 8 N41W 28 LKS. 18.48'

BIRCH 6 N20E 6 LKS. 3.96'

ASPEN 20 S6W 24 LKS. 15.84'

ASPEN 18 S18E 34 LKS. 22.44'

874 CCC NOTES BY H. ADAMS NO DATE (1934)

FOUND SCRIBED POST IN PLACE

NO BT'S.

3-22-2001 R. MAIN

8 FT STEEL SIGN POSTS. 306 FT NORTH 37 FT EAST

LINE TO STANDARD NORTH AND EAST OF CORNER.

9/26/76 CK

CHAINED TO THIS SEC. COR. LOCATION FROM WEST.

OUR LINE FELL 200' NORTH OF SWAMP - ORIG. TIE

STATES 1.50 CHS LV SWP. WE MOVE OUR POSITION

100'S AND ESTABLISH APPROX. SEC. COR.

PUT FSLP ON 8" ASPEN N SIDE AS APPROX. SEC. COR.

100'S TO SWP. - CORNER, IS ON KNOLL OF ASPEN + BIRCH

THEN RAN LINE NORTH FROM THIS APPROX. COR. TO CHECK

CREEK TIE (BY ORIG. SURVEY AT 24.50 CHS. OR 1617'

CENTER OF DRY CREEK E+W) ON OUR LINE WE HIT

CREEK AT 1500' N. CONTINUE NORTH TO APPROX. 1/4 COR.

NO EVIDENCE WAS FOUND AT SEC. COR.

FOUND OLD BLAZED LINE AT BASE OF RIDGE E+W

FAINT OLD BLUE PAINT ALSO - FD. 10" ASPEN BLAZED ON

4 SIDES APPROX. 100'S OF OUR POSITION LOOKS LIKE

THEY CAME IN FROM EAST AS THIS TREE IS 200'S

OF OUR LINE AT STA. 2200'E OR AT GOVT CHAIN

FOR CLOSING DISTANCE TO RANGE LINE - ORIG. DISTANCE

IS 74.82 CHS. OR 4938' WHICH WOULD MAKE CLOSING

1/2 MILE FROM 1/4 13/29 TO RANGE LINE 2298'E

AT STA. 2300'E AND 100'S ESTABLISH APPROX SEC. COR.

1997

SEE CORNER CERTIFICATE BY ITASCA COUNTY

QUARTER BET. SEC'S, 19 & 24

NOTES OF ORIG. GOVT. SURVEY 1875

SET TAM. POST

TAM. 10' S80E 7' 4.62'

TAM. 12' WEST 5' 3.30'

NORTH TRUE LINE ON WEST BORDY OF SEC. 19

9.50 CHS. ENT. TAM. SWP. NE & SW

40.00 CHS. $\frac{1}{4}$ COR.

59.00 CHS. LV. SWP. NE & SW

66.50 CHS. ENT. TAM. SWP. E & W

78.50 CHS. LV. SWP. E & W

80.00 CHS. SEC. COR.

9/27/76 CK

FROM SEC. COR. APPROX. LOCATION TO NORTH CHAIN
AT TRUE SOUTH 100' ENTER SWP. - 870'S LV. SWP. E & W
1570'S ENT. BRUSH & BLK SPRUCE SWP. E & W - 2500'S
POINT OF ASPEN & BIRCH HIGHLAND TO WEST - 2690'S
SEARCH AREA IS IN HEAVY BRUSH - BALSAM - SPRUCE AND
MANY BURNT TAM STUMPS - SOME HAVE FLAT TOPS
WHICH INDICATE IT HAS BEEN LOGGED ALSO IN YR. PAST
SHOULD CHAIN UP FROM SOUTH NEXT TIME
PUT FSLP ON 4" BALSAM BLAZED ON 4 SIDES
AS APPROX. $\frac{1}{4}$ COR. - APPROX. 150' N & W TO HIGHLAND
WOOD TRAIL ON RIDGE TO SOUTH OF APPROX. COR. TRAIL
COMES IN FROM E & SE - Fd. TAG IN JAN 1987 CK-GB

SECTION CORNER TO SECTIONS 19-24-25-30

NOTES OF ORIG. GOVT. SURVEY 1875

SET BIRCH POST

ASPEN 13 N89E 29 LKS. 19.14

SPRUCE 10 SIZE 16 LKS. 10.56

SPRUCE 18 S69W 38 LKS. 25.08

SPRUCE 7 N51W 78 LKS. 51.98

GCC NOTES 12/19/35 J.M. LASSON

STATED HE REPLACED POST ASPEN 30 HIGH

FOUND 10" STUB BADLY DECAYED WITH SCRIBE "S" VISIBLE

OTHER MARKS ARE OBLITERATED

FROM POST 10" STUB IS S18°30'E 7 LKS.

PLACE FSLP ON 5" ASPEN ON NE SIDE OF TREE CORNER IS

S31E 20 LKS.

10/31/86 CK-JA-6B

CHAINED NZW FROM POSSIBLE ORIG. 1/4 AT 254.30

125' N ENT. SWA - 1050 LV. SWP. - 1150' WOODS TRAIL

NW-SE - 1390 S EDGE OF POND - EDM ACROSS POND ^{BEQUED}

1965' N EDGE ON OLD DAM 2610' APPROX. SEL. COR.

SEARCH AREA AT END OF CHAIN - FOUND LARGE PINE

STUMPS ON HIGH GROUND AND LARGE TAM STUMPS IN

SMALL SWAMP TO NW-N-NE OF APPROX. COR.

OUR LINE RAN AT W EDGE OF DEER STAND ON RIDGE 125'S

OF APPROX. COR. - ROAD SURVEY LINE COMES IN FROM E

AND STA. 8100 IS SE OF SEARCH AREA.

NO EVIDENCE WAS FOUND - SHOULD CHAIN IN FROM WEST

BUT WE WILL HAVE TO SEARCH THAT SEL. COR. ALSO AS THERE

ARE TAM. BT'S

PLACE FSLP ON 7" BIRCH AS APPROX. SEL. COR. DISTANCE IS

2610' NZW FROM 1/4 COR. TO SOUTH - MORE SEARCH NEEDED

QUARTER CORNER BET. SEC'S, 25 & 30

NOTES OF ORIG. GOVT. SURVEY 1875

MKD 4" TAM TREE FOR COR.

N. PINE 14 N30W 45 LKS, 29.7

Fd. 19" N.P. stub NZOW 29.4' to center 50d

TAM. 6 S75E 25 LKS, 16.5

Well rotted tip out S76E 16.5

10/30/86 CK, GB, JA

Marked temporary ties:

Birch 10" S4W 19.35 nail & tag

Birch 10" S75E 22.65 nail & tag

Set 2" dry balsam post at possible corner
position.

NORTH TRUE LINE ON WEST BDRY OF SEC. 30

^{1518'}
23.00 CHS, ENT. TAM, SWP, NE & SW^{1980'}
30.00 " LV, TAM, SWP, " "^{2640'}
40.00 " 1/4 COR.^{2838'}
43.00 " ENT. TAM, SWP, E & W^{3973'}
60.20 " LV, TAM, SWP, E & W^{5280'}
80.00 " SEC. COR.

10/30/86

Chained NZW 2600' from approx. section corner

25, 30, 31, 36. Fell 52' ^{WEST} of possible corner location.

Fd. pine stub decaying with 1 piece having
a old ax mark near scribe area. Scribe area
rotted & burned out. Fd. other ax marks
placed by Krouse in 1973. Fd. well rotted
tip out S76E 16.5". Will send in samples
for identification. Fd. dark stained area
at corner location. Will send in samples of
wood pieces found. (Samples are burnt.)

SECTION CORNER TO SECTIONS 25-30-31-36

NOTES OF ORIG. GOVT. SURVEY 1875

SET BIRCH POST

BIRCH 18 N40E 10 LKS. 6.60'

ASPEN 5 S48E 35 LKS. 23.1

BIRCH 20 S35W 30 LKS. 19.8

ASPEN 4 N41W 45 LKS. 29.7

10/28/86 CK-6B

FROM FS BC 8" IRON PIPE AT TSP COR. WE RAN N4W
 2637' N TO APPROX 1/4 31-36 CONT. N3W TO SEC. COR. (APPROX)
 2700' N

WE FELL 90' W OF (1973 LOCATION TAG ON ASH) AND TOTAL
 OF MILE WOULD BE 5337' - SEARCH AREA AND FOUND:

BIRCH BARK UNDED DUFF + BIRCH IN VERY WIDE STRIPS

BUT COULDN'T FIND STUMP AREA - TO NORTH OF SEARCH:

AREA FOUND 24" LIVING BIRCH APPROX 180' NORTH OF

AREA WE CHAINED TO - FOL BIRCH STR. 20" E ALONG N4S

WOODS TRAIL BUT NO OTHERS TO TIE TOGETHER

I BELIEVE TAG PUT UP IN 1973 SHOULD BE MOVED 170' E

AND 50' S OF PRESENT LOCATION AS TIES NORTH WOULD

FIT ORIG. TIES BETTER

WHEN WE RAN LINE NORTH FROM THIS LOCATION WE HIT

FLOODED BEAVER POND ON LINE AT 270' N WE MOVED 127' E

AT THIS POINT TO OLD BLAZED LINE N4S AND ALSO TO

CONTINUE CHAINING NORTH AS DAM WAS WEST OF THIS LINE

AT 1/4 COR. 25430 WE FOUND POSSIBLE ORIG. COR. AND STILL

HAD TO MOVE 53' E TO COR. POSITION

OUR LINE RUN NORTH WAS FROM 1973 POSITION OF APPROX.

SEC. COR. WHICH WAS CHAINED UP FROM SOUTH AND CHAIN

IN FROM 1 MILE TO EAST - APPROX COR. IS RIBBON ON

BRUSH AND FSLP ON 13 ASH S60W 26' 10/23/73 CK

WE DIDN'T MOVE THIS POSITION YET AS WE NEED TO RUN

MORE LINE IN FROM WEST TO MAKE ANOTHER TIE

WE HAVE EVIDENCE AT SEC. COR. 1 MILE TO WEST

CONTINUED ON PAGE 45 THIS BOOK

QUARTER CORNER BET. SEC'S, 31 & 36
 NOTES OF ORIG. GOVT. SURVEY 1875
 SET SPRUCE POST

BIRCH 10 N38E 10 LKS. 6.60'

ASPEN 10 S83W 15 LKS. 9.90'

NORTH TRUE LINE ON WEST BDRY OF SEC. 31

40.00 $\frac{1}{4}$ COR.

80.00 SEC. COR.

10/28/86 CK-68

CHAINED N4W FROM TSP. COR. 2637' AND FELL
 APPROX. 40' W OF 1973 POSITION - NO EVIDENCE
 FOUND THEN OR AT THIS TIME - PLACE FSLP ON 22. W
 PINE ON SOUTH SIDE 10' SOUTH TO APPROX. $\frac{1}{4}$ COR.
 FROM THIS POSITION WE RAN N3W TO SEC. COR.
 WE CROSSED SEVERAL SWAMPS WHICH WERE NOT TIED INTO
 BY ORIG. SURVEY - WHICH MAKES A PERSON WONDER
 IF THEY RAN LINE

37 Book # 2 T149 N R 27 W
QUARTER CORNER BET. SEC'S, 7 & 12
NOTES OF ORIG. GOVT. SURVEY 1875,
SET ASPEN POST

BIRCH 12 S80W 5 LKS.

Fd. dirt mounds

BIRCH 9 S86E 24 LKS.

Fd. well rotted windfall at bringg & dist.

10/21/86 CK, GB, JA

Fd. Ed Miller ^(ccc) metal tag on a birch
windfall. Pulled distance & bearing from
original BT and found well rotted
ash post and post point hole in
ground.

Mkd. Temporary BT's

Ash 8" S52E 70.55 Galv. 20d & tags

Maple 4" N30E 60.4 Galv 20d & tags

Maple 3" S21E 24.55 " " "

Placed a F.S.L.P. on 9" Balsam N76E 20.15'

Placed 5 rocks around post.

Set a 5" x 5" x 6" dry tam. post to mark corner.

Placed sod spike at base of post

Placed sod spike in center of rotted birch
stp. with old ccc tag on top.

CC DONE

CERTIFICATE FILED

37

NORTH TRUE LINE ON WEST BDRY. OF SEC. 7

400 CHS. ENT. TAM. SWP. E & W

71.00 " LV, " " "

401.00 " 1/4 COR.

701.30 " CREEK 20 LKS WIDE RUNS E

ENTER TAM. SWP. E & W

801.00 SEC. COR.

OCT 22 1935

874 says Ed Miller found a stake in
fair condition 4x4x30 above ground.

Fd. original Birch 12" S87E 23 lks.

NOTES BY JOHN J. ROSE 1927 FOLDER 15 PAGE 72

FOUND BOTH ORIG. BT'S. - BUT NO POST

SET NEW ASH 3" x 4 POST AT TRUE COR.

10/21/86 CK, JA, GB Chained N1E 2456'
from Section Corner 12, 13 Dist. checks good.
Old railroad grade is N1E 135', runs NW, SE
from corner.

Small ash swale ± 70 SE of corner.

SECTION CORNER TO SECTION 647

NOTES OF ORIG. GOV'T SURVEY 1875

MKD 4" TAM. TREE FOR COR.

TAM.	8	S17E	13 LKS.	8.6
SPRUCE	6	N1E	12 LKS.	7.9
TAM	7	S2W	12 LKS.	7.9 MKS. REMOVED ¹⁸⁹⁶
SPRUCE	8	N88W	14 LKS.	9.2 MKS. REMOVED ¹⁸⁹⁶

CERTIFICATE FILED

SEE PAGE 29 THIS BOOK FOR CHANGES ON THIS LINE
2/6/87 CK-68

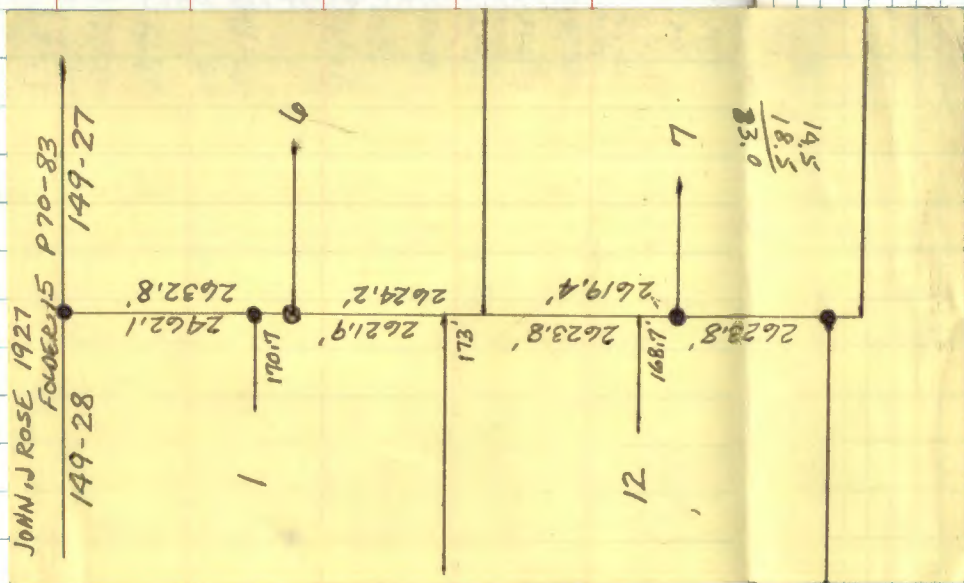
CHANGED SZW FROM SEC. COR. TO SEC'S. 1412 149-29

173' AS ROSE'S. NOTES STATE - NO EVIDENCE FD AT THIS
TIME - PUT FSLP ON 5" SPRUCE STUB 7' HIGH

BLAZED TO APPROX. CORNER LOCATION

APPROX. 70' W OF CREEK - APPROX. 500' NW TO HIGH
GROUND

(DEAD)
FSLP ON 5" SPRUCE STUB N72W 20.0' FROM BRUSH
WITH RIBBON AS APPROX. COR.



QUARTER CORNER BET. SEC'S. 146
 NOTES OF ORIG. GOVT. SURVEY 1875
 SET TAM. POST

TAM. 12 N37E 22 LKS. 14.5'

TAM. 8 N80W 28 LKS. 18.5'

NOTES BY JOHN J. ROSE 11/20/27

FOLDER #15 PAGE 73

FOUND TWO BT'S, BUT NO POST - BT'S CANNOT
 BE MADE TO AGREE - SHOULD BOTH BE ON SAME
 SIDE OF LINE, BUT ONE BEARS WEST AND THE OTHER
 EAST

SET NEW CEDAR POST 3x4

6/3/87 CK RM

FOUND BOTH ORIG. TAM. STUMPS AT BEARING AND DISTANCE
 170' SOUTH OF E¹/₄ SEC. 1

SET 8' ALUM. SIGN POST AT DISTANCE + BRGS. FROM
 ORIG. TAM. STUMPS

PUT FSLP ON DEAD CEDAR N10W 27.9' FROM ALUM POST

CERTIFICATE FILED

NORTH TRIE LINE ON WEST BDRY OF SEC. 6
 FROM COR. IN SWP.

14.20 CHS. CREEK 4 LKS. WIDE RUNS E
 MEADOW 1.00 CHN. WIDE

40.00 CHS. ¹/₄ COR.

55.00 " LV. SWP. NE & SW

77.50 " ENT. TAM. SWP. E & W

80.00 " SEC. COR. - TSP. COR.

2/6/87 CK-6B

CHAIN FROM E¹/₄ OF SEC. 1 171' ROSE'S DISTANCE

SPIKE AT BASE
 FOL. LARGE TAM. STUMP WITH BASE BLAZE FACING COR. LOCATION

NO SCRIBE VISIBLE - THIS STUMP IS 1875 ONE BT BY HINCAWOOD

NO EVIDENCE NOW OF OTHER BT TO NIN 16' OF SNOW

NO POST WAS FOUND ABOVE ICE - PLACE SPIKE IN ICE & GRASS AT

DISTANCE OF 14.5' S 37W FROM LARGE TAM. STUMP

LEANS NW
 PUT FSLP ON DEAD CEDAR 10 N 10W 26.0' FROM SPIKE AT COR.

WEST QUARTER SEC 6

SECTION CORNER TO SECTIONS 3-4-33-34

NOTES OF ORIG. GOV'T. SURVEY 1875

SET SPRUCE POST

SPRUCE 6 N40W 6 LKS. 41.0'

SPRUCE 6 S33W 14 LKS. 9.2'

SPRUCE 7 S47E 41 LKS. 27.1'

TAM. 8 N86E 78 LKS. 51.5'

NOTES BY JOHN J. ROSE 10-6-27

FOLDER 15 PAGE 36

FOUND OLD POST - BADLY DECAYED

SET NEW POST SPRUCE 5"

10/4/85 CK-6B

FOUND ROSE'S. POST 5" X 24" LONG UNDER MOSS IN

BLK. SPRUCE + TAM. SWAMP - NO TRACE OF ORIGINAL POST

REMAINS - NO EVIDENCE OF ORIGINAL BT'S WITH

ANY SCRIBE - FOUND OLD LINE TREE DOWN BLAZED

E+W APPROX. 30' E OF CORNER - USED METAL ROD

TO PROBE FOR ORIGINAL STUMPS & POSTS

FD. TAM. WINDFALL 10" AT N57E 54.5' SCAR VISIBLE

SCRIBE ROTTED OUT HAS LONG SCAR LIKE ORIG. BT

WOULD HAVE BEEN BLAZED

FD. SPRUCE WINDFALL & ROTTED STUMP AT S50W 10'
FROM 5" SPR. POST - (SET 2" X 8' TAM POST BESIDE)

NEW TIES MARKED TO 5" SPRUCE POST

PLACED 40° SPIKE IN TOP OF POST

TAM. 9 N24E 58.85' MKD T150NR27W S34 BT

TAM. 5 S5E 35.65' " T149NR27W S3 BT

TAM. 5 S32W 52.90' " T149NR27W S4 BT

TAM. 6 N9W 83.20' " T150NR27W S33 BT

6' STEEL SIGN POST 218' WEST WITH 54-9

5" BLK. SPRUCE SIDE 1118' WITH 54-9

CHAINED TO THIS CORNER FROM EAST ROSE'S. DISTANCE

2609' AND WEST TO 1/4 ROSE'S. DISTANCE OF 2625.3'

NEED TO CHAIN NORTH TO 1/4 ROSE'S. DISTANCE 2839.5'

AND SOUTH TO 1/4 ROSE'S. DISTANCE 2579.6' THIS 1/4 COR.

WAS FOUND BY CREW ON 5-31-83 CK JAGB

T150NR27W
SEE BOOK 2 PAGE 62 FOR MONUMENTATION

A-B-17

ON SOUTH SHORE OF Coddington Lake

MC Between Sections 2 & 3

Notes of Original Gov't Survey 1875

SET: Tam Post 3'2x5'

Tam 10" S13E 210 LKS 138.6'

Tam 6" S64W 106 LKS 69.9'

Notes off JS ROSE - Surveyed by E Christensen
1927 F13 P 104-105Fd: BT to section 3 - down and
badly decayed but showing
faint traces of scribing iron.SET: cedar post N13°W 138.6' for
M.C. SEC. 2 & 3 - post set in floating
bog.

3/13/90 GB-CK

FROM 1/4 COR. BET. SEC'S. 2 & 3 CHAIN TRUE NORTH ROSE'S.
DISTANCES (1979.6') AND TIE RIBBON ON BRUSH - IN OPEN BOG.
CHECK TIE BY ROSE ON R.R. GRADE - FROM OUR LINE TO ROSE'S.
RANDOM LINE - AT OUR DISTANCE WE FEEL OUR LINE IS RIGHT ON
WE CHAINED 1980' N - NO TAG - BLAZED 8" BALMIE ON OUR LINE
AT STA 1505' N - JUST NORTH OF GRADE

41

8/2/90 GB-CK

By BOAT, GO BACK TO END OF CHAIN 1980' IN BOG
SEARCH NEAR END OF CHAINED DISTANCE AND 3/13/90Fd. 5" SQD. CEDAR POST 48" LONG - NO SCRIBE VISIBLE
POST WAS 2.5' NORTH OF OUR CHAINED DISTANCE FROM SOUTH
AND RIGHT ON LINE WITH RIBBONS SOUTHPLACE 8' STEEL SIGN POST BESIDE 5" CEDAR POST - IN BOG
SIGN
54-9 ATTACHED TO STEEL POST

70'± SOUTH OF WATERS EDGE NOW

NO TRACE OF BT'S. AT ORIG. BPG. ± DISTANCE VISIBLE NOW

SOUTH $\frac{1}{16}$ Bet. Sec's 2 & 3

NOTES By J. Rose - 1927

Folder 15, page 40

Set Balsam post and mkd. BT's

Black Ash 7" N - 13.6'

Elm 10" $58^{\circ}E$ 1.9'

6/27/89 CK, GB

Found remains of both BT's recorded by Rose
in 1927

Ash stp. North 13.6' Scarvis. "BT" rotted out

Elm stp. SBE 1.9' cut off below scribe

Mkd. New BT's:

W. Oak 18" S81W 81.8' ^{scribe} $S\frac{1}{16}$ S3BT

Ash 9" S7E 54.8' $S\frac{1}{16}$ S2BT

Placed 50d spike at corner location.

C.C. Dome 11/15/89

Chained $55^{\circ}E$ 1479 from west $\frac{1}{4}$ c. of sec 2

Our line fell 35' east and 3' short of
distance. (Hilly country to chain over)

Corner falls in an old logging landing.

Area cut off to the NW and east.

N-S logging road 50' east of corner.

QUARTER CORNER BET. SEC'S. 23+26

COUNTY GRADER OPERATER SAID HE HOOKED IRON
AND PULLED UP - HE PLACED BY STEEL SIGN POST
ON NORTH SIDE OF COUNTY ROAD ~~145~~¹⁴⁵

5/23/94 RM YCK

FD. IRON OUT OF PLACE - LYING BY STEEL SIGN POST
ON NORTH SIDE OF COUNTY ROAD ~~145~~¹⁴⁵

5/31/94 CK

PULLED DISTANCES FROM BOTH REMAINING SPRUCE BT'S
SE + SW AND SET ROD MONUMENT $\frac{3}{4}$ " X 48" MONUMENT
POINT IS ON 24" FORTED ROD + 24" STRAIGHT ROD AND

ALUM. CAP MARKED T149NR27W

CAP IS 10" BELOW $\frac{1}{4}$ S23
S26

ROAD SURFACE 1994

COUNTY IRON IS AT NORTH USFS

EDGE OF ROD + UNDER CAP

MARKED NEW BT

W. OAK 7 N3E 67.51' MKD BT

8' STEEL SIGN POST NORTH 22.85'

REMAINS OF 1975 BT'S.

W. SPRUCE 10.5" S30E 49.60' SCRIBE VISIBLE

W. SPRUCE 8" S14W 47.90' " "

CEDAR STUB 6" FT. HIGH S23W 92.85' " "

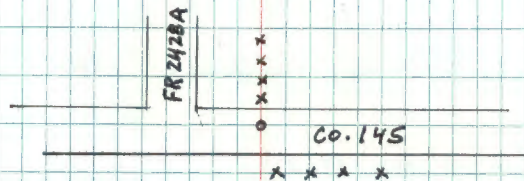
SPRUCE STUB 6" FT. HIGH STUMP NOT IN PLACE (LEANING)

N35W - 64.8'

CORNER IS 6' NORTH OF CENTERLINE OF COUNTY RD. ~~145~~¹⁴⁵
7" GREEN TREATED FENCE POST W/ BRACE (NAIL ON E SIDE)
SIDE - 22.33'

CORNER IS 18' EAST OF FR # 2428A WHICH RUNS NORTH
FROM COUNTY ROAD ~~145~~¹⁴⁵

W. OAK BT IS IN OLD FENCE LINE RUNNING NORTH



CORNER TO SECTIONS 22-23-26-27

Co-1-94 CK

FOUND F.S. BRASS CAP AT SURFACE OF COUNTY ROAD

126 - REMOVED 2" IRON AND SET $\frac{3}{4}$ " X 8' ROD

MONUMENT - 24" FLUTED + 3 - 24" STRAIGHT RODS

WITH ALUM. CAP MARKED T149NR27W

CAP IS 10" BELOW ROAD

522	523
-----	-----

SURFACE - MAGNETIC PELLET

527	526
-----	-----

AT NORTH EDGE OF ROD 1.5' DOWN 1994

USFS

BT'S REMAINING FROM 1983

N. PINE 16 S72E 232.20' (IN GOOD CONDITION) SCRIBE VISIBLE

WELL ROTTED TAM. STUMP N52W - 95.10 SOME

SCRIBE STILL VISIBLE

CEDAR WINDFALL N59E 231.65' SCRIBE VISIBLE

N. PINE WINDFALL S87W 98.20' SCRIBE VISIBLE

PINE STUB 5' HIGH AT S84E - 207.4' IS STARTING

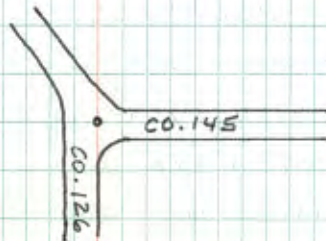
TO BREAK APART

COUNTY BT'S.

TAM. 5.5" N37E 66.83'

BLK. SPRUCE 6" S78W 77.02'

8' STEEL SIGN POST WEST 45.15'

CORNER IS 4' NORTH OF CENTERLINE OF COUNTY ROAD 145
EAST AND IN LINE WITH EAST SHOULDER OF COUNTY RD.
126 RUNNING SOUTH

FROM PAGE 35 THIS BOOK
ALSO SEE 149-28 ~~SEE~~ CORNER CARD V-25
CONTINUED INFORMATION ON SEC. COR. 25/30
36/31
CHAINED SOUTH LINE OF SEC. 25 149-28
3-12-87 SEE CORNER CARDS V-23+V-25

SEARCH AGAIN 3-12-87

NOTHING MORE WAS FOUND OF ORIG. EVIDENCE
OLD TAG (1973) IS STILL ON 15" ASH
THIS SHOULD MOVE 150' E AND APPROX.
50' SOUTH OF IT'S POSITION NOW

7-25-95 TALKED TO TIM WOTZKA AT
ITASCA COUNTY - THEY WILL BE AT THIS
CORNER SOON - HE WILL REMOVE TAG
FROM 1973

THEY WILL PROBABLY SET COUNTY MONUMENT
AT PROPORTIONATE POSITION - BASED
ON DISTANCES NORTH - SOUTH - EAST + WEST

WE DID SEARCH IN AREA OF BLAZED LINES.
150' TO 200' EAST OF 1973 TAG - FD. SOME LARGE
BIRCH WIND FALLS - PAPER IS IN WIDE STRIPS
24" TO 30" WIDE - BUT NOTHING COULD BE TIED
TOGETHER - NO OLD TAG WAS FOUND - MORE
SEARCH MAY RECOVER SOME EVIDENCE.

THERE IS A WOODS TRAIL RUNNING NYS NEAR
OUR SEARCH AREA - BUT IT IS GROWN UP TO
THICK BRUSH & WINDFALLS - COMES DOWN FROM
NORTH OF NEWLY BUILT ROAD FR 2232

3/12/87 CK

CENTER QUARTER OF SECTION 24

CCC NOTES By C. SHERMAN 1-17-34.

Fd. ELM 14 S60W 55 Lks. = 36.3'

Fd. BASSWOOD 22 NORTH 70 Lks. = 46.20'

FSLP ON TEL. POLE 7" SW OF COR.

CENTER EAST $\frac{1}{16}$ IN SECTION 24

CCC NOTES By C. SHERMAN 1-17-34

Fd. BIRCH 14 NIDE 75 LKS. = 49.50'

Fd. ASPEN 8 EAST 50 LKS. = 33.0'

END OF
BOOK #2