

CORNER RESTORATION

T149N R25W

Book 2

R2

FIELD BOOK

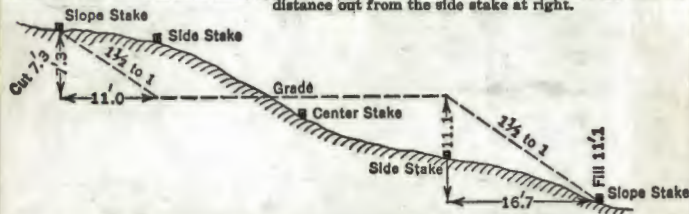
82-0012

T149N R25W

DISTANCES FROM SIDE STAKES FOR CROSS-SECTIONING

Roadway of any Width. Side Slopes 1 1/2 to 1.

In the figure below: opposite 7 under "Cut or Fill" and under .3 read 11.0, the distance out from the side stake at left. Also, opposite 11 under "Cut or Fill" and under .1 read 16.7, the distance out from the side stake at right.



Cut or Fill	Distance out from Side or Shoulder Stake										Cut or Fill
	0	.1	.2	.3	.4	.5	.6	.7	.8	.9	
0	0.0	0.2	0.3	0.5	0.6	0.8	0.9	1.1	1.2	1.4	0
1	1.5	1.7	1.8	2.0	2.1	2.3	2.4	2.6	2.7	2.9	1
2	3.0	3.2	3.3	3.5	3.6	3.8	3.9	4.1	4.2	4.4	2
3	4.5	4.7	4.8	5.0	5.1	5.3	5.4	5.6	5.7	5.9	3
4	6.0	6.2	6.3	6.5	6.6	6.8	6.9	7.1	7.2	7.4	4
5	7.5	7.7	7.8	8.0	8.1	8.3	8.4	8.6	8.7	8.9	5
6	9.0	9.2	9.3	9.5	9.6	9.8	9.9	10.1	10.2	10.4	6
7	10.5	10.7	10.8	11.0	11.1	11.3	11.4	11.6	11.7	11.9	7
8	12.0	12.2	12.3	12.5	12.6	12.8	12.9	13.1	13.2	13.4	8
9	13.5	13.7	13.8	14.0	14.1	14.3	14.4	14.6	14.7	14.9	9
10	15.0	15.2	15.3	15.5	15.6	15.8	15.9	16.1	16.2	16.4	10
11	16.5	16.7	16.8	17.0	17.1	17.3	17.4	17.6	17.7	17.9	11
12	18.0	18.2	18.3	18.5	18.6	18.8	18.9	19.1	19.2	19.4	12
13	19.5	19.7	19.8	20.0	20.1	20.3	20.4	20.6	20.7	20.9	13
14	21.0	21.2	21.3	21.5	21.6	21.8	21.9	22.1	22.2	22.4	14
15	22.5	22.7	22.8	23.0	23.1	23.3	23.4	23.6	23.7	23.9	15
16	24.0	24.2	24.3	24.5	24.6	24.8	24.9	25.1	25.2	25.4	16
17	25.5	25.7	25.8	26.0	26.1	26.3	26.4	26.6	26.7	26.9	17
18	27.0	27.2	27.3	27.5	27.6	27.8	27.9	28.1	28.2	28.4	18
19	28.5	28.7	28.8	29.0	29.1	29.3	29.4	29.6	29.7	29.9	19
20	30.0	30.2	30.3	30.5	30.6	30.8	30.9	31.1	31.2	31.4	20
21	31.5	31.7	31.8	32.0	32.1	32.3	32.4	32.6	32.7	32.9	21
22	33.0	33.2	33.3	33.5	33.6	33.8	33.9	34.1	34.2	34.4	22
23	34.5	34.7	34.8	35.0	35.1	35.3	35.4	35.6	35.7	35.9	23
24	36.0	36.2	36.3	36.5	36.6	36.8	36.9	37.1	37.2	37.4	24
25	37.5	37.7	37.8	38.0	38.1	38.3	38.4	38.6	38.7	38.9	25
26	39.0	39.2	39.3	39.5	39.6	39.8	39.9	40.1	40.2	40.4	26
27	40.5	40.7	40.8	41.0	41.1	41.3	41.4	41.6	41.7	41.9	27
28	42.0	42.2	42.3	42.5	42.6	42.8	42.9	43.1	43.2	43.4	28
29	43.5	43.7	43.8	44.0	44.1	44.3	44.4	44.6	44.7	44.9	29
30	45.0	45.2	45.3	45.5	45.6	45.8	45.9	46.1	46.2	46.4	30
31	46.5	46.7	46.8	47.0	47.1	47.3	47.4	47.6	47.7	47.9	31
32	48.0	48.2	48.3	48.5	48.6	48.8	48.9	49.1	49.2	49.4	32
33	49.5	49.7	49.8	50.0	50.1	50.3	50.4	50.6	50.7	50.9	33
34	51.0	51.2	51.3	51.5	51.6	51.8	51.9	52.1	52.2	52.4	34
35	52.5	52.7	52.8	53.0	53.1	53.3	53.4	53.6	53.7	53.9	35
36	54.0	54.2	54.3	54.5	54.6	54.8	54.9	55.1	55.2	55.4	36
37	55.5	55.7	55.8	56.0	56.1	56.3	56.4	56.6	56.7	56.9	37
38	57.0	57.2	57.3	57.5	57.6	57.8	57.9	58.1	58.2	58.4	38
39	58.5	58.7	58.8	59.0	59.1	59.3	59.4	59.6	59.7	59.9	39
40	60.0	60.2	60.3	60.5	60.6	60.8	60.9	61.1	61.2	61.4	40

COVER TYPES

	Cover type line	0	Grassland
A	Aspen - paper birch	0 ₁	Sand dunes
Ax	Offsite aspen	C	Crop land
B _s	Mixed conifer swamp	C ₁	Pasture land
D	Cottonwood	1h	Upland brush
H	Hemlock	1s	Lowland brush
K	Oak	2	Muskeg
Kx	Scrub oak	4	White cedar
M	Northern hardwoods	5	Jack pine
M _s	Swamp hardwoods	6	Spruce - fir
P	Plantation	7	Black spruce
Px	Experimental planting	8	Red pine
Sx	Non-productive swamp	9	White pine
T	Tamarack		Rock outcrop

STANDARD SIZE CLASS

- b Saplings
 - c Poles
 - d Small sawtimber
- Timber type symbol = Large sawtimber

DENSITY CLASSIFICATION

- I Poor
- II Medium
- III Good

The paper in this book is made of 50% high grade rag stock with a WATER RESISTING surface sizing.

USFS

T149N R25W

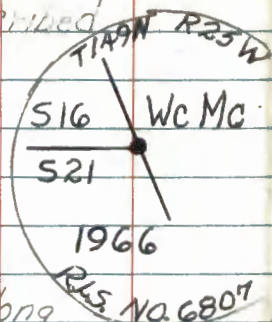
5th. P.M.

Book #2

	6	10	5	23	4	3	2	1
11	9	7	8					
19	7	6	8	9	10	11	12	
18	5		4					26
17	18		17	16	15	14	13	
16				1				
15	19		20	21	22	23	24	
3								
2	30		29	28	27	26	25	
14								
13	31		32	33	34	35	36	
12								

Colored numbers indicate the page
on which notes for that corner may
be found

1
 N-12,13
 M.C. between Sec's 16 & 21
 Original Gov't Survey Notes
 Cedar N85°W 30.36'
 Found Cedar Snag Scribed



Set a 2" inside dia 5' long
 galvanized steel pipe filled w/concrete
 & capped w/a 3" dia. bronze Stamped
 Tablet.

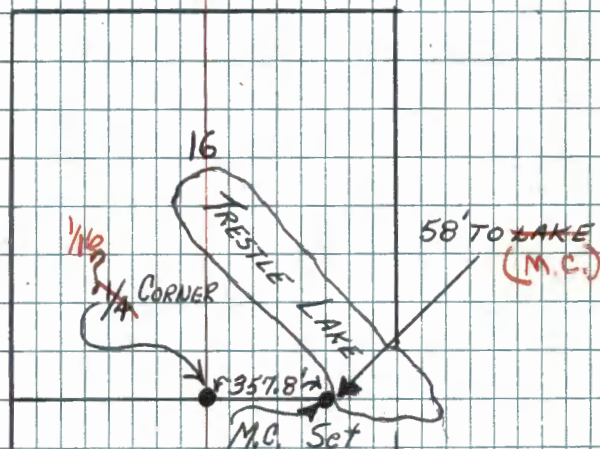
Birch 7" S74°W 11.7' WC S21 BT

Birch 6" N72°W 11.8' WC S16 BT

7150-4 RMM

N-12,13

Steel Sign post w/signs of 54-4
 due WEST 5.5'



21

T149N R25-26W
Quarter corner Sections 30-25

Notes of original Govt. Survey

Cedar 8" East 7 links 4.6' (Now a

10" cedar windfall w/ scribe decayed place from

567°E Cedar 9" S16°W 6 links 3.9' (Now a

Cedar windfall w/ face - scribe decayed.

S20°W

Found a F.S. metal location poster on

the orig. 8" cedar BT. Tag dated 1935

states corner is N75°W 6 links.

12/1/67 RHM:

Found old squared post at point for Cor.

Set a 2" inside dia. 5 foot long galvanized

steel pipe filled with concrete and

capped with a 3" dia. bronze tablet

stamped:

T149N
R26W R25W

1/4
S25/S30

1968
RLS NO 6807

Cedar 7" S59°E 18.9 Ft. MKD. 1/4 S30 BT

Cedar 12" N4°E 12.8 Ft. MKD 1/4 S30 BT

Steel sign post 72" long w/ F.S. standard

signs 54-2 & 54-4 attached set East

May 20, 1968 RHM Donald

Affidavit RHM

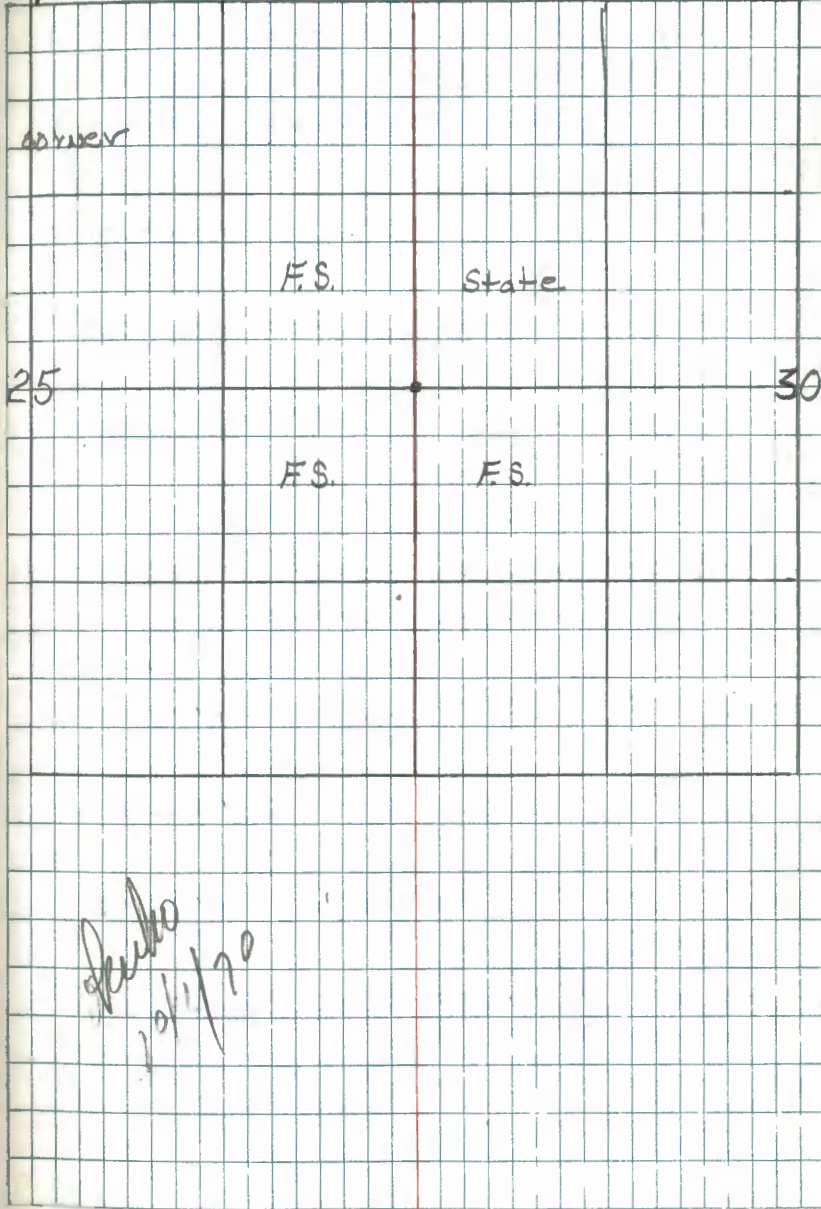
T149N R9-7150-4 RHM

2

T-1

R26W

R25W



Garney Sections 24-25-19-30

Notes of orig. govt. Survey

W. Birch 10" S17°W 30 links (19.80')

W. Birch 9" S78°E 6 links (3.96')

Norway pine 8" N61°E 24 links (15.8')

Cedar 6" N33°W 30 links (19.8')

07-18-1991 ITASCA COUNTY REFER TO CORNER CERT
SET 30" ALUMINUM MONUMENT

SPRUCE 9" N78°E 11.64 FT TO SPK/WASHER
NOW 10"

SPRUCE 7" S15°E 3.41 FT SPK/WASHER
NOW 8"

SPRUCE 10" S32°W 8.67 FT SPK/WASHER
NOW 12"

BALM OF GILEAD 9" N59°W 17.33 FT SPK/WASHER
NOW 12"

T149N

3

R26W

R25W

24

19

8-25-2009 R.MATU

FD IRON IN PLACE AND GAS. 1991 BTS ARE
GOOD, CORNER ± 750 FT EAST OF FR

F.S.

F.S.

11 ± 750'

FR II

F.S.

State

25

30

4

Quarter Corner Sections 8-17

Notes of orig. Govt. survey

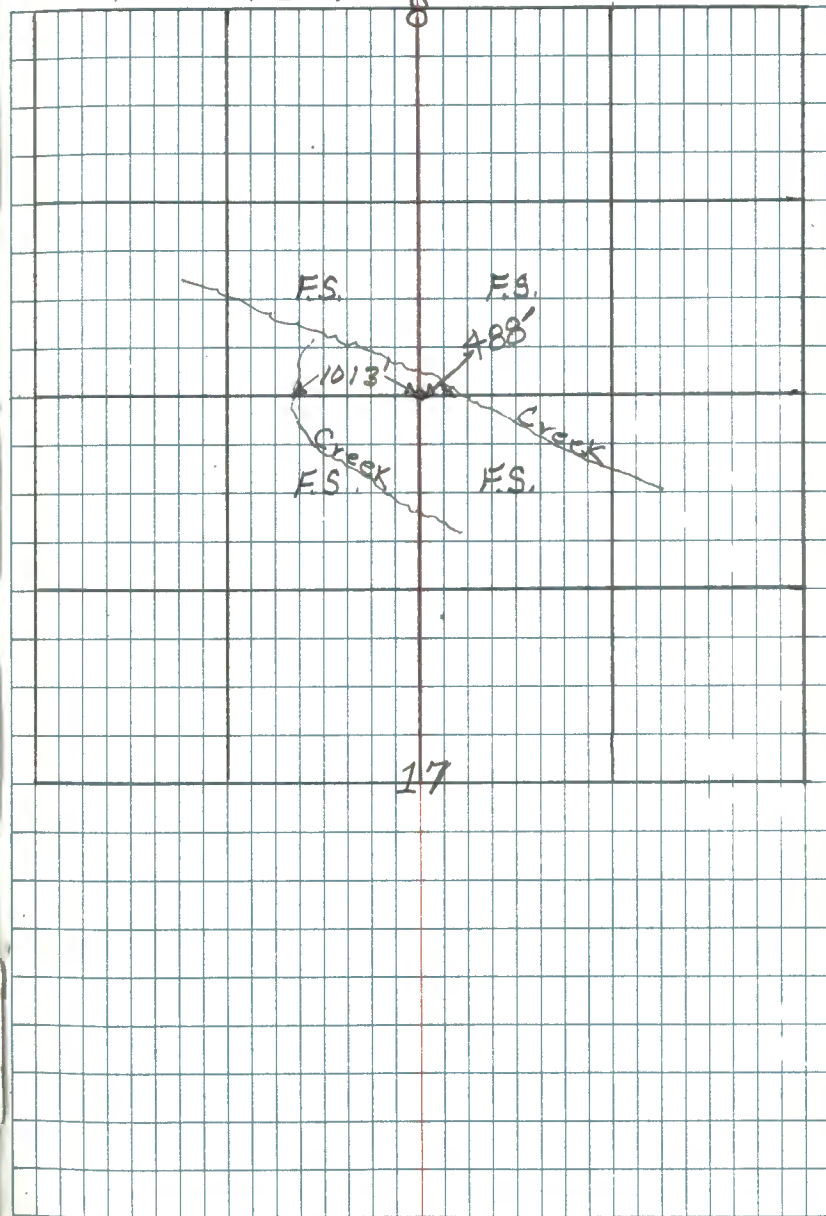
Post

White birch 8" S15°E 20 1/2 kts. (13.2')

White birch 6" N17°W 16 1/2 kts (10.56')

T149N R25W

4



Quarter Corner Sections 7-18

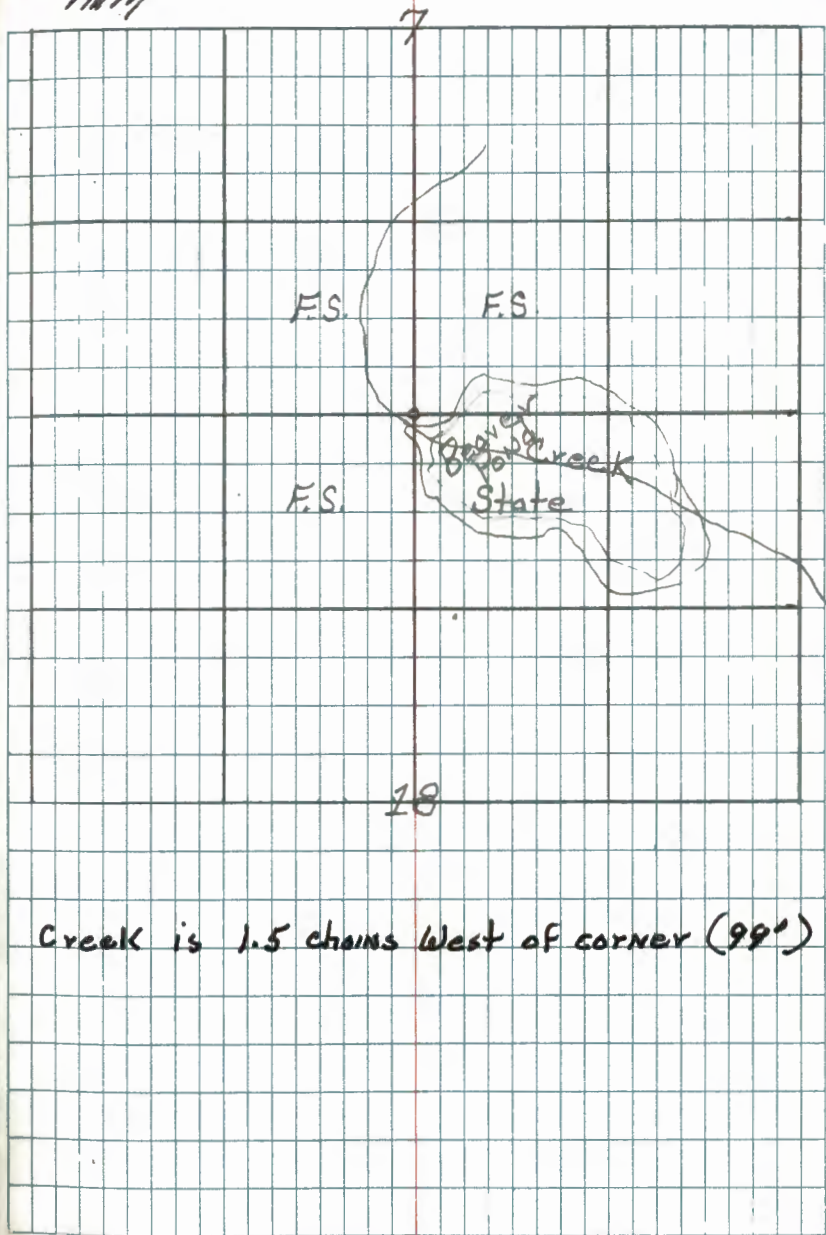
Notes of orig. govt. survey

Post

White pine 8" N 61° W 6 lks. (3.96')

White pine 10" S 71° E 8 lks. (5.28')

Searched this area 3 man hours, many
 pine stumps remain, but are badly burned
 and out of place. No evidence of corner
 was found 5-15-69 RHM

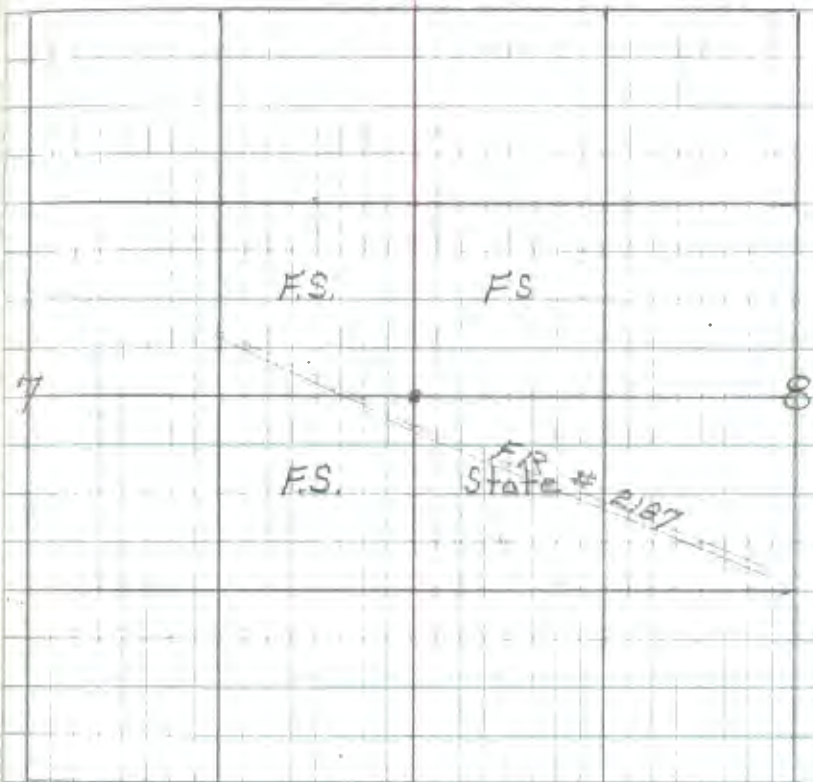


Quarter Corner Sections 7-8

Notes of orig. Govt. Survey
Post

Norway pine 8" S45°W 39 lks. (25.74')

Norway pine 8" N13°E 135 lks (89.1')



11.5 chains south to swamp (756')
 17.5 " " " Greek (s. bank) (1155')

7

Corner Sections 5-6-7-8

Notes of orig. Govt. Survey

Post

White birch 7" N51°E 15 lks. (9.9')

Tamarack 10" S20°W 5 lks. (3.3')

Tamarack 6" N 18°E 20 lks. (13.2')

Tamarack 7" S60°E 12 lks. (7.92')

T149N

R25W

7

6

5

F.S.

F.S.

F.S.

State

7

8

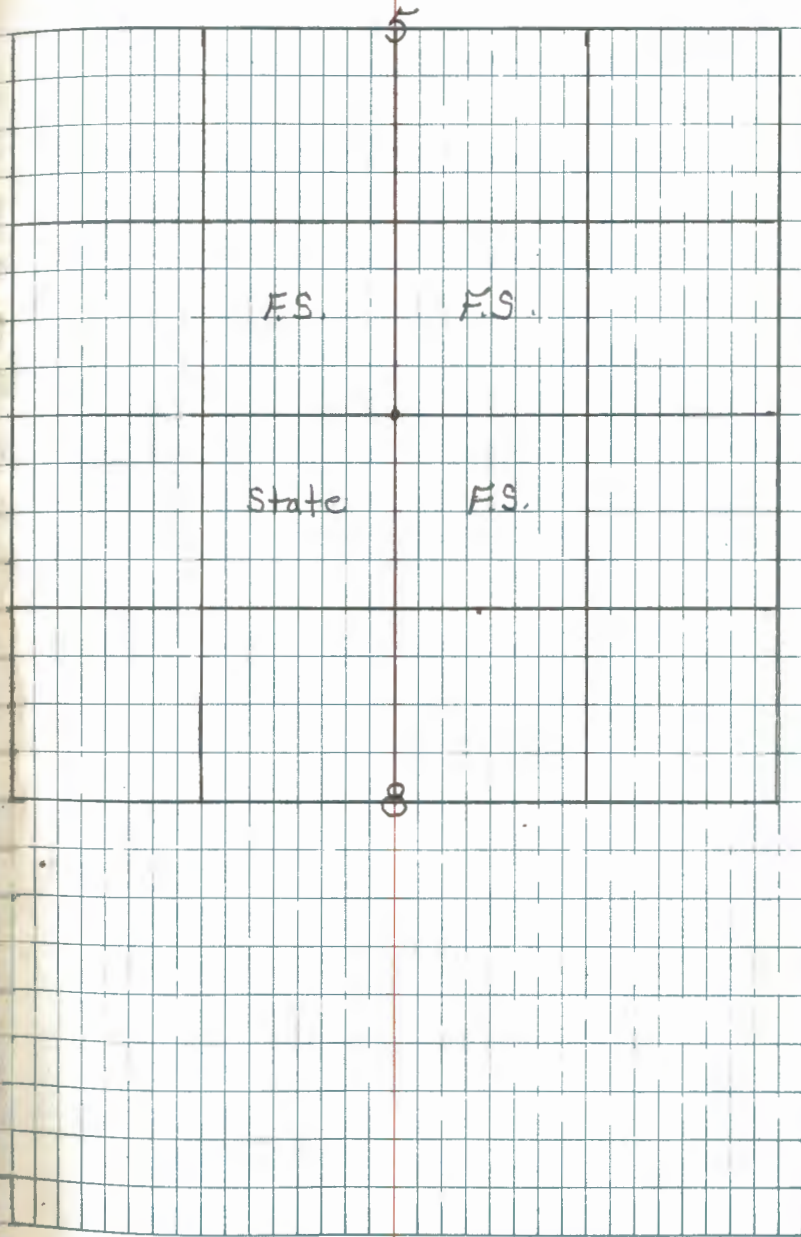
Quarter Corner Sect's. 5-8

Notes of orig. govt. survey

Post

Cedar 6" South 10 lks (6.6')

Tamarack 10" N13°W 21 lks. (13.86')



9.

E-3

Quarter Corner Sections 6-7

Notes of orig. govt. survey

Post

Black pine 10" S6°W 210 (138.6')

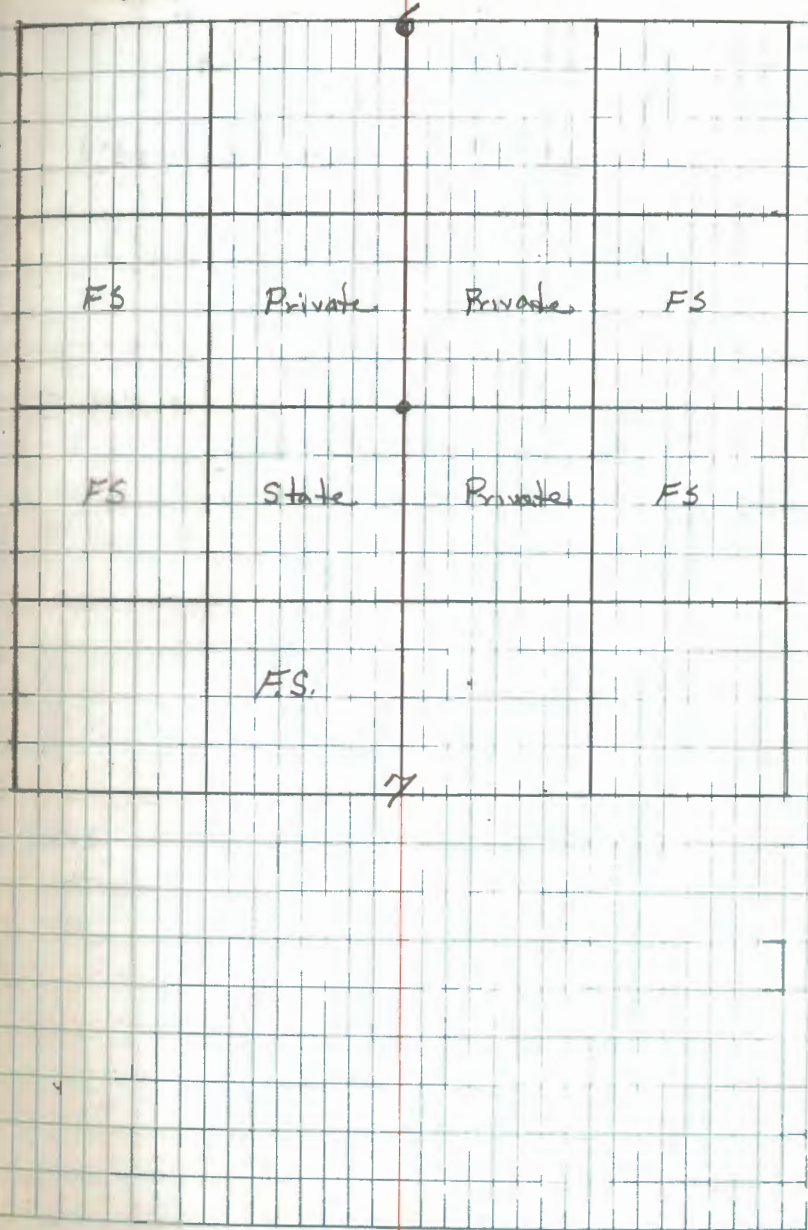
Searched 2 man hours but no evidence of this corner was found. Corner falls in a meadow & should be near an old fence line. There are pine stumps on south side of meadow but they are badly burned. *RHM*

May 1969

R9-1750-4
RHM

T149N R25W

9

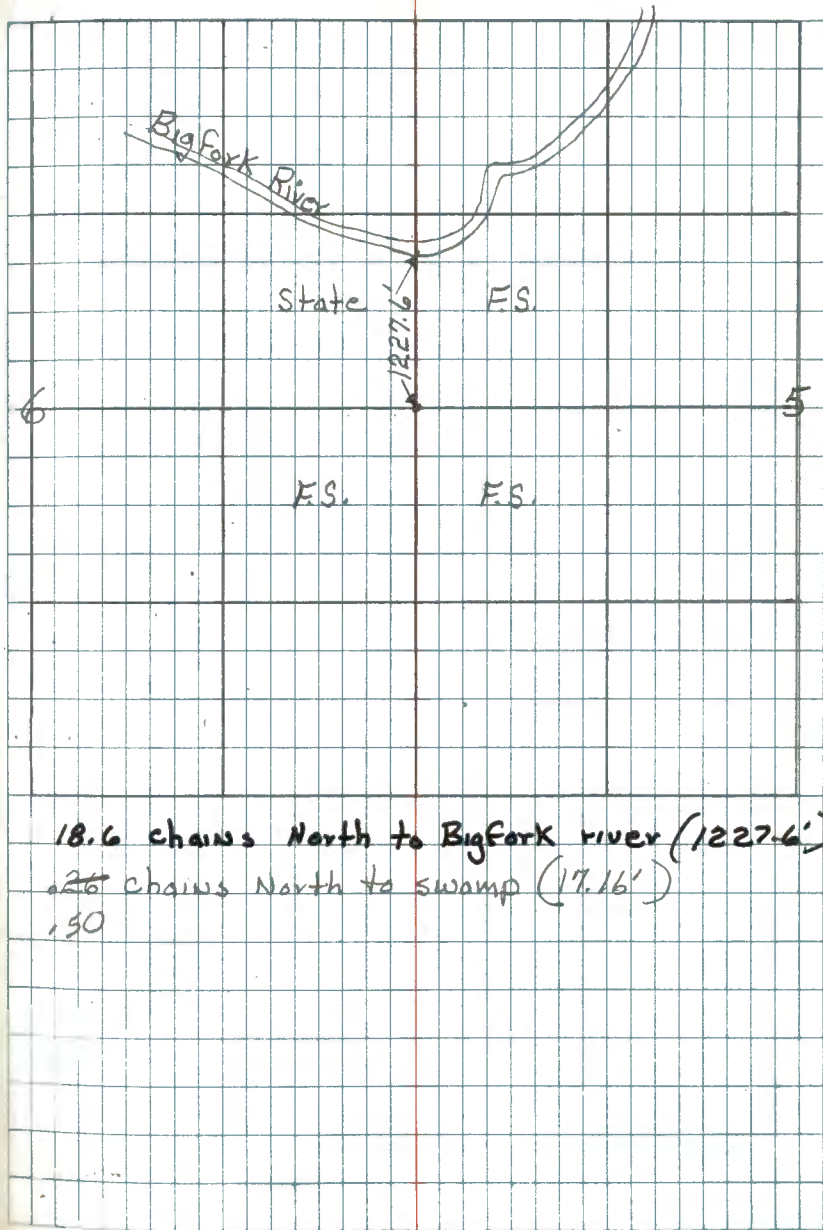


Quarter Corner Sections 5-6
Notes of orig. Gov't Survey
Post

Tamarack 6" N20°E 28 1ks. (18.48')

Tamarack 7" N45°W 30 1ks. (19.8')

Searched 3 Man hours for this corner
Chained North from approx $\frac{1}{4}$ cor of
Sec 7 & 8. Found Nothing
2/77 Ronald Olson



18.6 chains North to Bigfork river (1227.6')

~~26~~ chains North to swamp (17.16')

1.50

CORNER SECTIONS 6-7-1-12 T149N R25-26W

Notes of orig. Govt. Survey

Post

Tamarack 7" S27°W 30 IKS (19.8')

Tamarack 7" N 19°W 34 IKS (22.94')

Tamarack 6" N12°E 26 IKS. (17.16')

Tamarack 8" S45°E 49 IKS. (32.34')

Ed. Tam. stub S45E - 32.3' with scribe BT visible ⁵⁻²⁻⁷⁷ CR-RO

Searched 3 man hours for this corner but were unable to tie down the BT stumps. Old road probably destroyed them. ~~1-8-68~~ 1-8-68

Certificate Filed 12-14-82

Doc # 355061 @



12

2.00 north to creek (132')

Ed. evidence of other Tamarack trees at bearings recorded, but distances didn't check very good approx. 125' south of wide spot in creek - old beaver dam; down stream is flooding area approx. 500' east of black top road N-SW

5-2-77 CR-RO

See Page 2, Book #3 T149N R25W

4/14/82

14677

M.C. North bank Fourtowns Lake between
Sections 31 and 36 Ranges 25-26

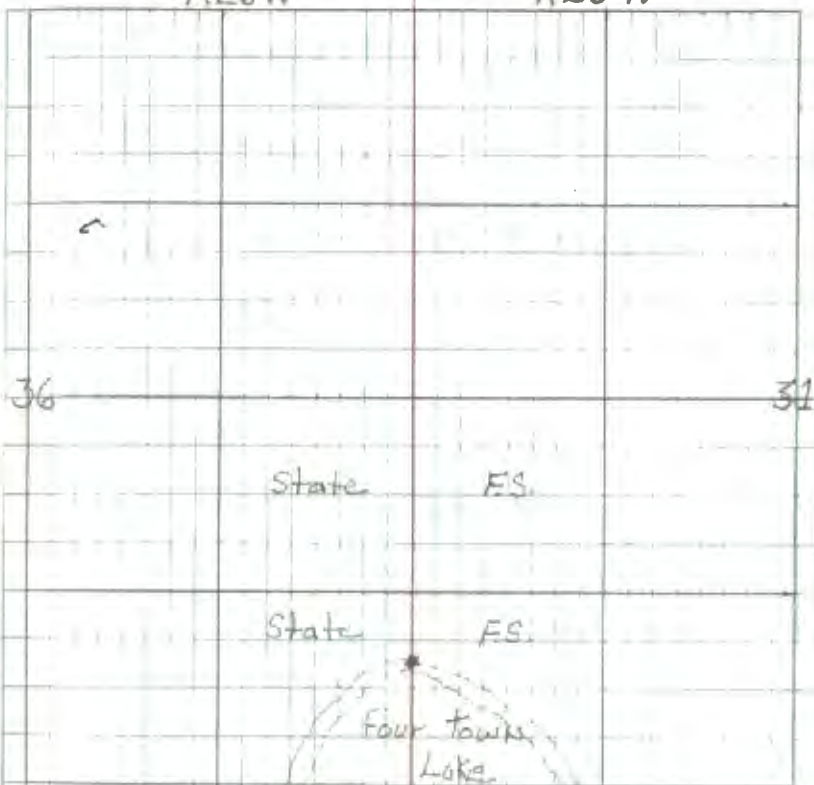
Notes of orig. Govt Survey
Post

White birch $9^{\circ} N 16^{\circ} E$ 47 lks. (31.02')

White birch $8^{\circ} N 1^{\circ} W$ 50 lks. (33.0')

R26W

R25W



13

Quarter Corner Sections 31-36 R25:26W

Notes of orig. Govt. Survey

Post

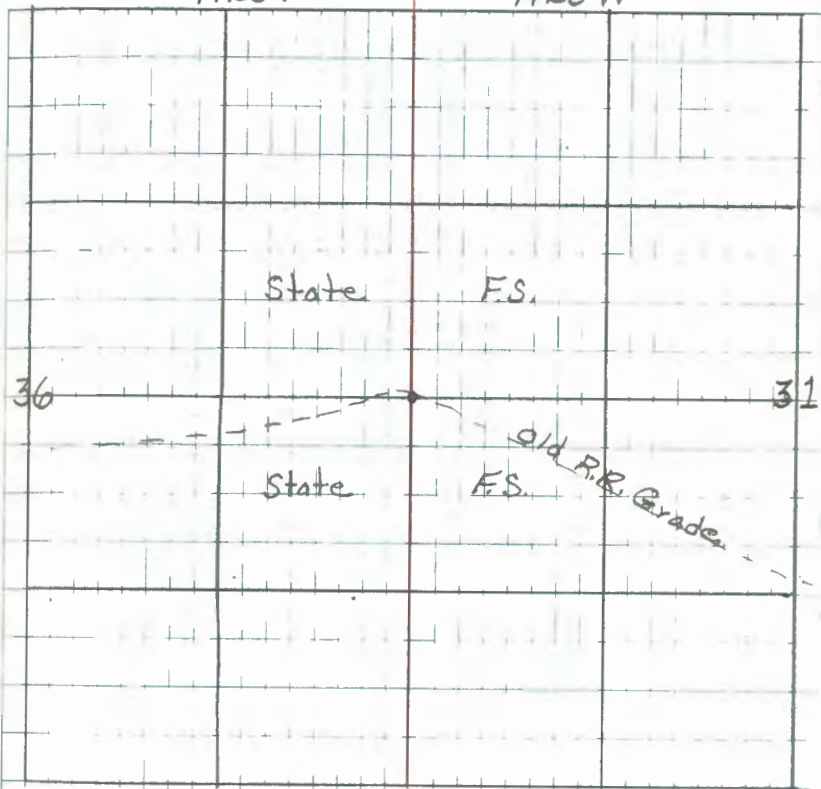
Spruce 6" S 41° E 14 lks. (9.24')

Tamarack 8" N 34° W 16 lks. (10.56')

T149N

R26W

R25W



14

Corner Sections 31-36-25-30 R25-26W

Notes of orig. Govt. Survey

Post

White birch 6" S23°W 21 Iks. (13.86')

White birch 6" N27°E 20 Iks. (3.2')

Aspen 9" N51°W 20 Iks. (13.2')

Aspen 9" S87°E 19 Iks. (12.54')

See Corner Cert. by Itasca Co. in 1892
also T149N R26W Book 1 pg 55

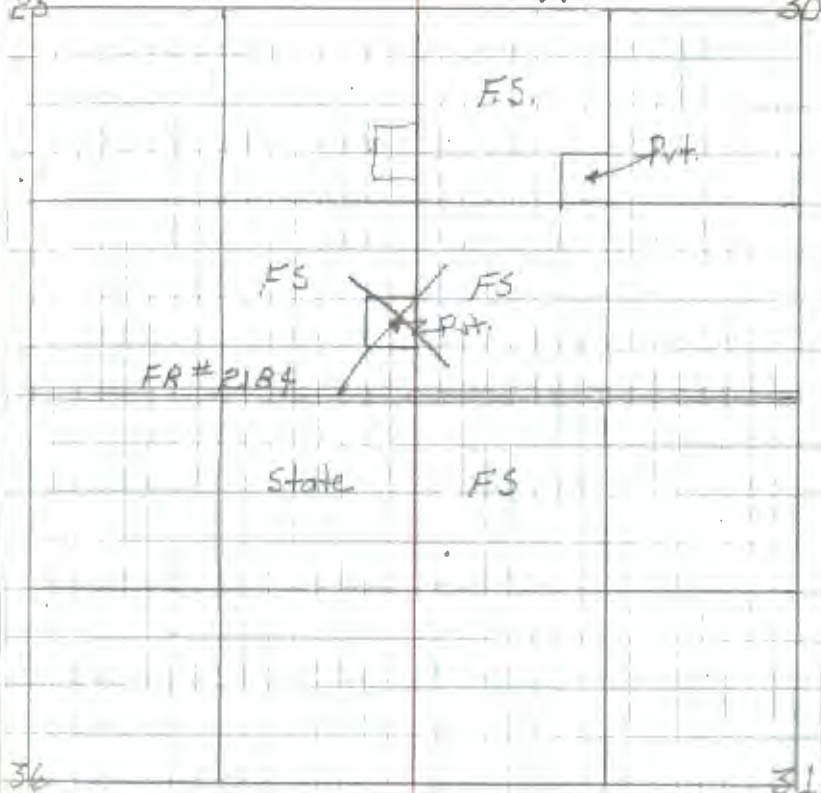
T149N

R26W

R25W

25

30



36

31

15

Quarter Corner Sects. 19-24 R25-26W

Notes of orig. Gov't. Survey

Post

White birch 12° East 4 lks. (2.64')

Fir 7" N39°W 18 lks. (11.88')

7-18-1991 ITASCA COUNTY REFER TO CORNER CERT
SET 30" ALUMINUM MONUMENTASH 9" N28°W 14.64 FT TO SPK/WASHER
NOW 11"BASSWOOD 9" S45°E 17.81 FT TO SPK/WASHER
NOW 13"ASH 6" S82°W 26.33 FT TO SPK/WASHER
DIFENG 6"

8- -2009 R MAIN

GPS IRON CORNER IS 330 FT EAST

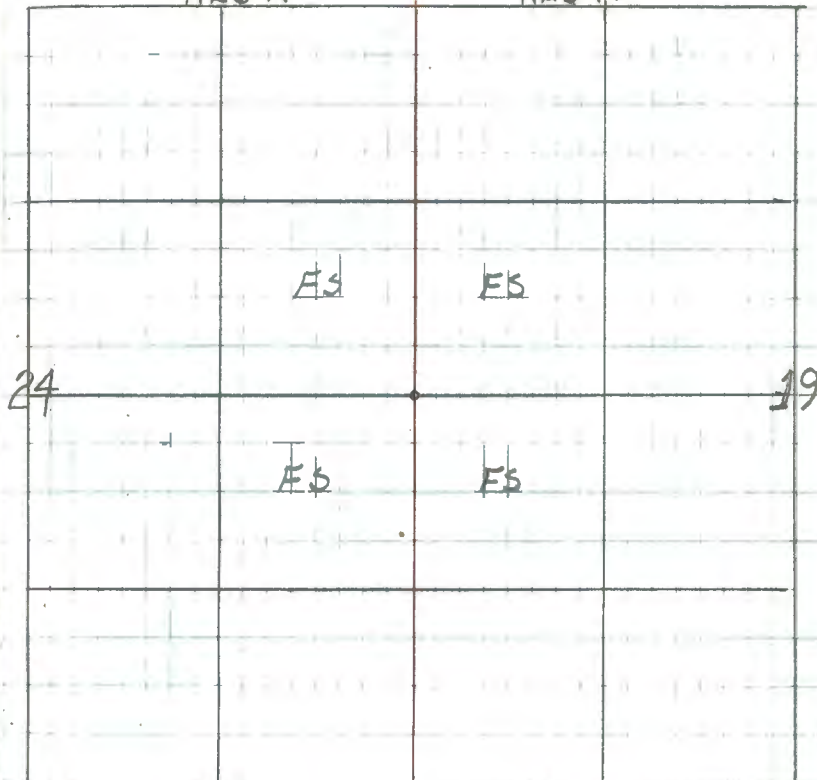
OF FR

8 FT STEEL SIGN POST 2.0' SOUTH

T149N

R26W

R25W



16

Affidavit ~~RHM~~ N-1

Corner Sections 18-19-13-24 R25-26W

Notes of orig. Govt. Survey

Post (Tam.) Found a squared scribed cedar ^{post}

Tamarack 7" S6°W 13 lks. (8.58')

Now Fallen Tam S6°W 8.58' Scribed T149N R26W S24 BT

Tamarack 10" N13°W 21 lks. (13.86')

Now Tam. Stump N21°W 18.4' Scribe T149- ^{rest is} decayed

Cedar 4" N17°E 14 lks. (9.24') Now a

decayed cedar stump N17°E 11.0'

Set a 2" inside ϕ , 5' long galvanized steel pipe filled w/ concrete and capped with a 3" ϕ bronze tablet stamped:

T149N	
R26W	R25W
S 13	S 18
S 24	S 19
RLS 1969 6007	

Cedar 5" N60°E 23.5 Ft. MKD S 18 BT

Cedar 8" S20½°E 6.3 Ft. MKD S 19 BT

Cedar 8" S31°W 11.0 Ft. MKD S 24 BT

Cedar 9" N32°W 7.2 Ft. MKD S 13 BT

Steel sign post 72" long with F.S. standard signs 54-2 & 54-4 attached set East 5.0 Feet.

May 14, 1969
[Signature]

R9-7150-4 ~~RHM~~

T149N

13

R26W

R25W

18

FS

State

FS

FS

24

19

From note on Farm 874-9 of 1935 by H.C. Norman Jr. Forester. He found corner & set a new cedar post (Found in place.) He placed location poster on 5" cedar N35°W 0.11 chains. (Now a 9" cedar N32°W 7.0')

[Signature]

17

L1

Quarter Corner Section 18-13 R25-26W

Notes of orig. govt. survey

Post Not Found

White birch 3" East 22 kcs. (14.52')

Tamarack 10" N74°W 17 kcs. (11.22')

Found old Tam. stp at record bearing & dist.

I chained north from sec. cor. of 18-19-13-24
 and came out to location of cor. as per F.S.
 location poster of 1935. 4-30-69 RHM

R9-7150-4

T149N

R26W

R25W

	FS	FS
13		18
	FS	FS

Found FS metal location poster on 9" birch
 put up in 1935 by J.A. Golhaug states cor.
 is N10°E 16 1/2 kcs. 4-30-69 RHM

18

Corner Sections 12-13-7-18 R25-26W

Notes of original Govt Survey
Post

Black Ash 7" N30°W 13 kts. (8.58')

Elm 6" S32°W 15 kts. (9.9')

White Birch 10" N70°E 21 kts. (13.86')

White Birch 8" S54°E 20 kts. (12.2')

8-31-1988 IZASCA COUNTY (REFER TO CORNER CERT)

SET 30" LONG ALUMINUM COUNTY MONUMENT

X ROCK 1.5X1.5 N4°E 4.085

X ROCK 2X2 S78°E 10.079

X ROCK 2X2 WEST 17.35

ASH 5" S22°E 23.46

ASH 3" S15°W 8.02' NOT SCRIBED

ASPEN NO ~~DATA~~ ON CERT WEST 22.0' NOT SCRIBED/W/
LOCATION POSTER

T149N

12

R26W

R25W

7

Other

F.S.

F.S.

F.S.

13

18

19

Quarter Corner Sections 7-12 R25-26W

Notes of original Gov't. Survey

Post

Norway pine 20" S87°E 12 lks. (7.92')

Fir 7" N46°W 14 lks. (9.24')

point for corner falls in a large
brush chapped area. No evidence

1/8/68 RHM

07-25-1991 ZASCA COUNTY

SET 30" DRIVABLE ALUMINUM MONUMENT

R PINE 8" N33°W 28.93' TO SPK
NOW 11" W/TAGSW SPRUCE 7" N70°E 22.32' TO SPK
LOGGED OFFR PINE 9" S24°W 9.16' TO SPK
NOW 12" W/TAGS

R9-7150-4

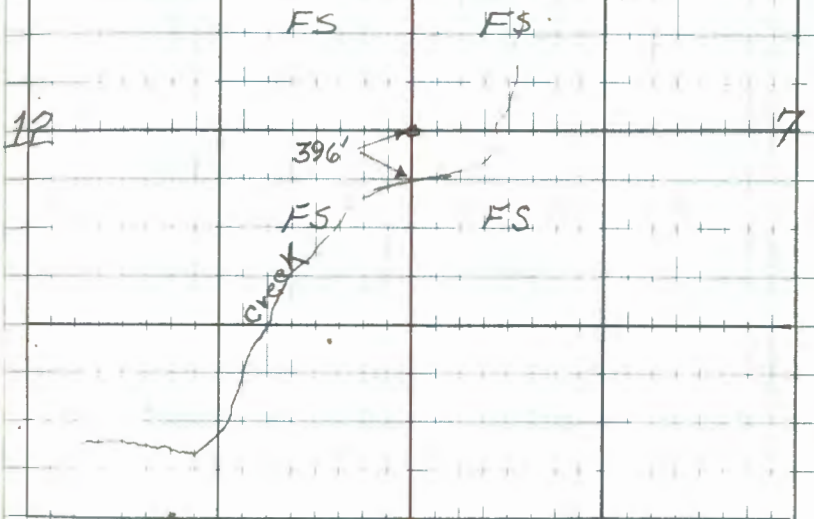
T149N

R26W

R25W

8-11-2009 R MAIN

FD IN PLACE AND GPS ED



Creek is 6 chains south of corner (396')

20

M.C. West bank of Big Fork river
 ON township line between Sec's. 5-32
 Notes of orig. Govt. Survey of 1875
 post
 Oak 12" N85°W 420 (277.2')

R25W

T150N

T149N

21

T149-150N R25W

Corner Sections 31-32-5-6

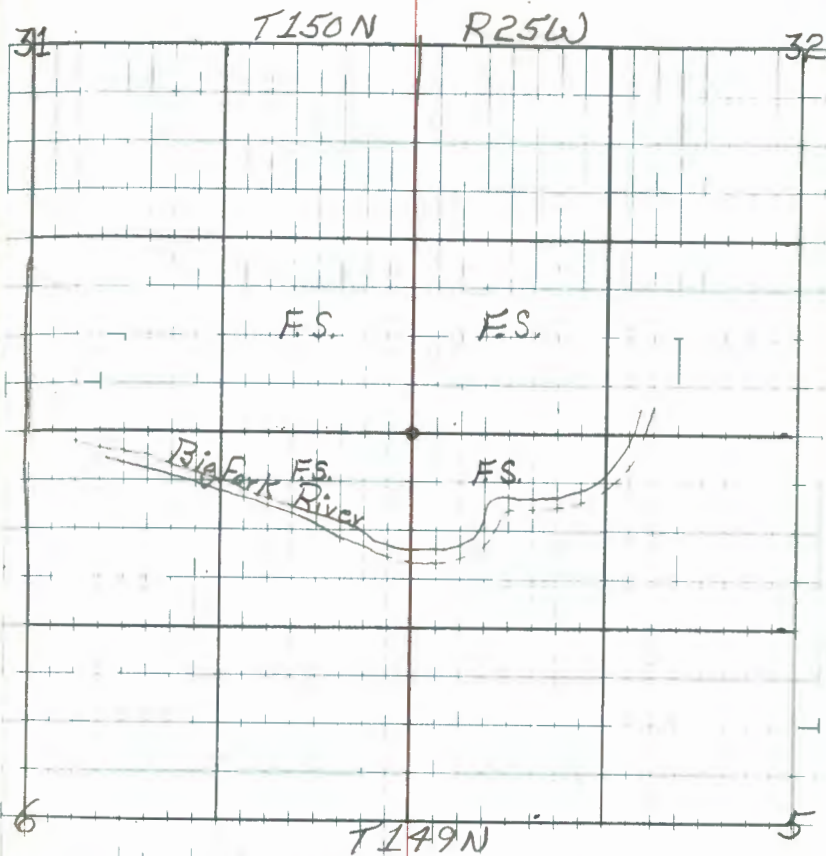
Notes of orig. Gov't. Survey of
1875

post

Aspens 6" N64°E 20 kcs. (13.2')

Aspens 7" N13°W 18 kcs. (11.88')

Spruce 6" S45°E 25 kcs. (16.5')



22

T149-150N R25W

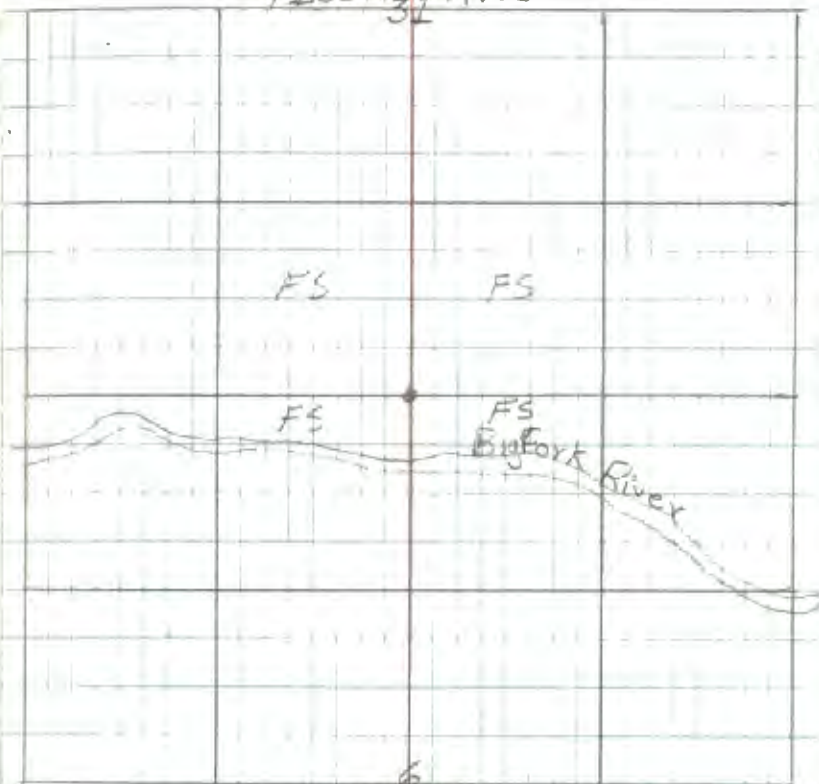
Quarter Corner Sect's. 6-31

Notes of orig. Govt. survey of 1875

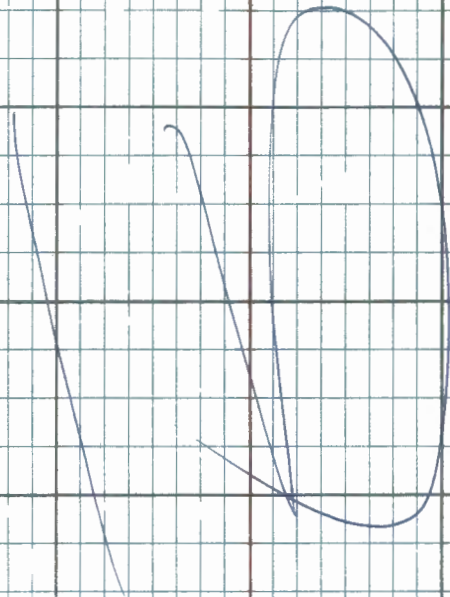
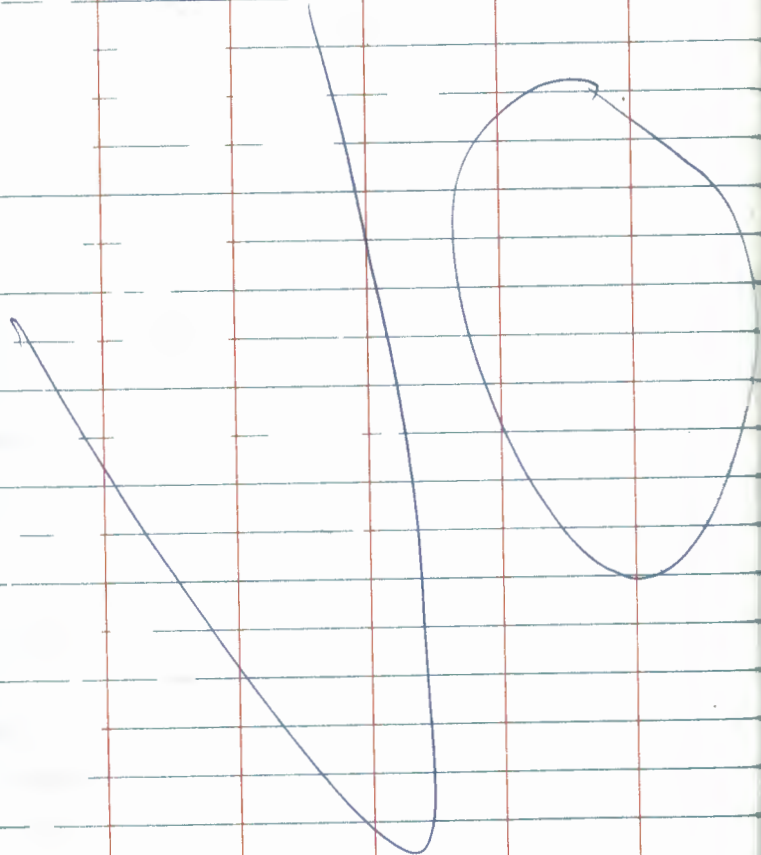
Post

Aspen 7" South 10 1/2 k. (6.6')

Aspen 6" N28°W 24 1/2 k. (15.84')

T150N₃₁ R25W6
T149N

H

~~Act~~~~Township Corner~~~~T149N, R25W, T149N, R25W;~~~~T149N, R25~~~~Section~~

C-1

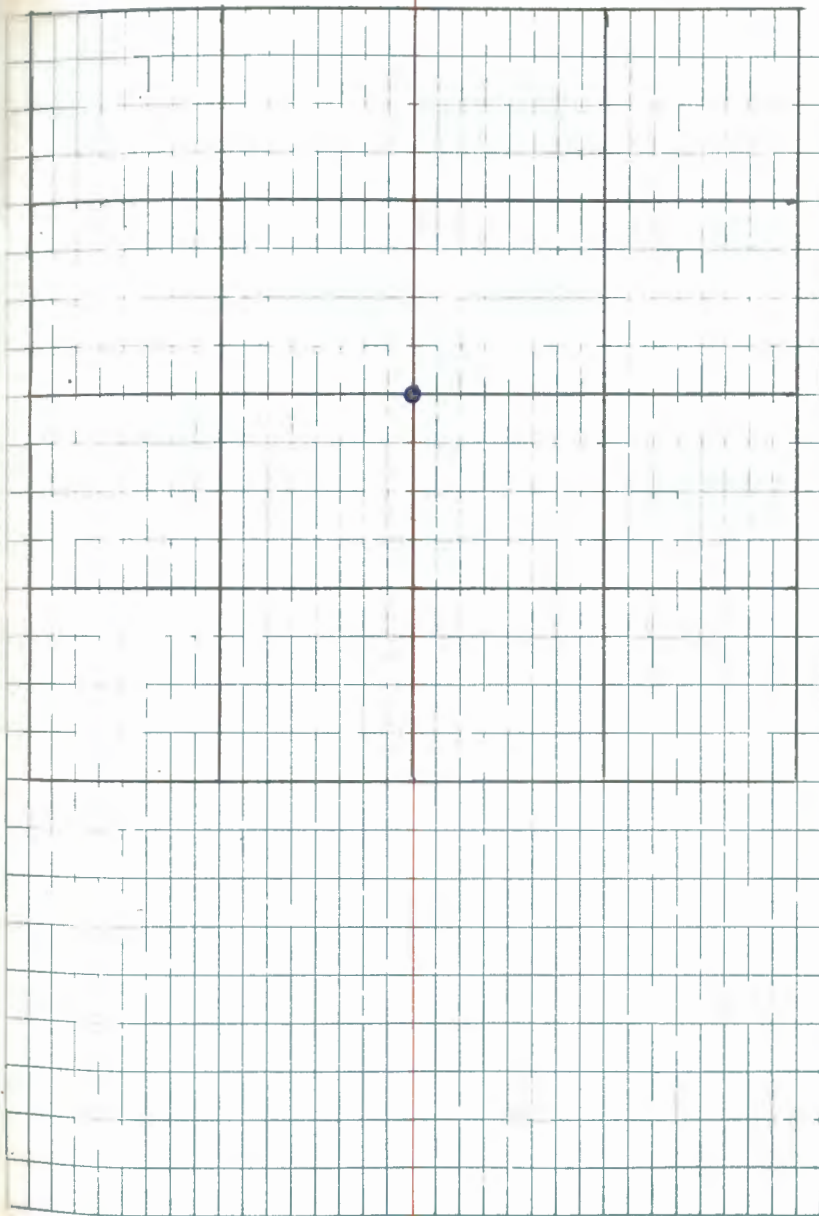
West $\frac{1}{4}$ corner of Sec 6
 (quarter corner common to
 Sec 6, T149N, R25W & Sect. 1,
 T149N R 26W)

Oct 15, 1875 John P. Hinchilwood, originally
 set a 4 inch x 5 inch Cedar Post
 from which:

Cedar 7 inch N78°E 13 lks 8,50 ft

Cedar 7 inch S68°W 48 lks 31,68 ft

T149N R25W



26

CLOSING CORNER SECTION 12-13

1875 ORIG GOVT SURVEY

SET SPRUCE POST 3 1/2 X 5

P. PINE 8" S 6 W 10 lks 6.6 FT

W. PINE 8" N 6 W 21 lks 13.86 FT

OCT, 1980 ITASCACOUNTY

SET 1/2" IRON PIPE ± 12.8 FT EAST OF

CENTRE LINE Co Rd #6

POWER POLE S 85 W 79.61

CULVERT "X" ON NORTH END S 25 W 103.68

T149N R25W

Remainder of
Book -

Blank
Pages