

CORNER  
RESTORATION  
T148N, R31W 5<sup>th</sup> P.M.



---

MINING  
TRANSFER BOOK

No. 384E

---

Book #2

CORNER RESTORATION T148N R31

U. S. F. S. Book #2

T148N, R31W 5th PM.  
Beltrami County.

	18											
	6	17	5	4	3	2	1					
	16	14	15									
	7	13	8	9	10	11	12					
	12	10	11									
	18	9	17	16	15	14	13					
	8	6	7									
40	19	5	20	21	22	23	24					
37	4	2	3									
43												
38	30		29	28	27	26	25					
41-42												
39							35					
	31		32	33	34	35	36					
	19	20	21	22	23	24	25	26	27	28	29	30

Colored numbers refer to page on which  
notes for that cor. are found.

Orig Notes of 1874

7° DECLINATION USED

1

*[Faint, illegible handwriting, possibly bleed-through from the reverse side]*

*[Faint, illegible handwriting, possibly bleed-through from the reverse side]*

2 R-5

Sect. Cor. 19-20-29-30

19	20
30	29

Orig. B.T.'s

Tam. 10" N76W 89 Mk 58.7'

Elm 7" S34E 22 " 14.5'

" 7" N62E 30 " 19.8'

Co. Notes of 1920 by Roy K. Bliler on file in Beltrami Co. Courthouse:-

Tam. 9" N75°W 71.6' (Now a decayed stump N 23°W 71.6')

Aspen 8" S35°W 35.1'

(Tam. stump N69°W 58.7' believe to be orig)  
gas pipe 1/2 x 24" (Found in place under road)

Set a 2' long 6" dia. cylindrical concrete monument capped w/a 3" dia. bronze tablet

Stamped:-

Mon. 6" under road

T148N R31W

S19/520

S30/529

1960

RLS NO 3628

Tam 4" N61 1/2°W 102.0' MKD X BT

Elm 6" S47 1/2°W 69.9' MKD T148N R31W S30 BT

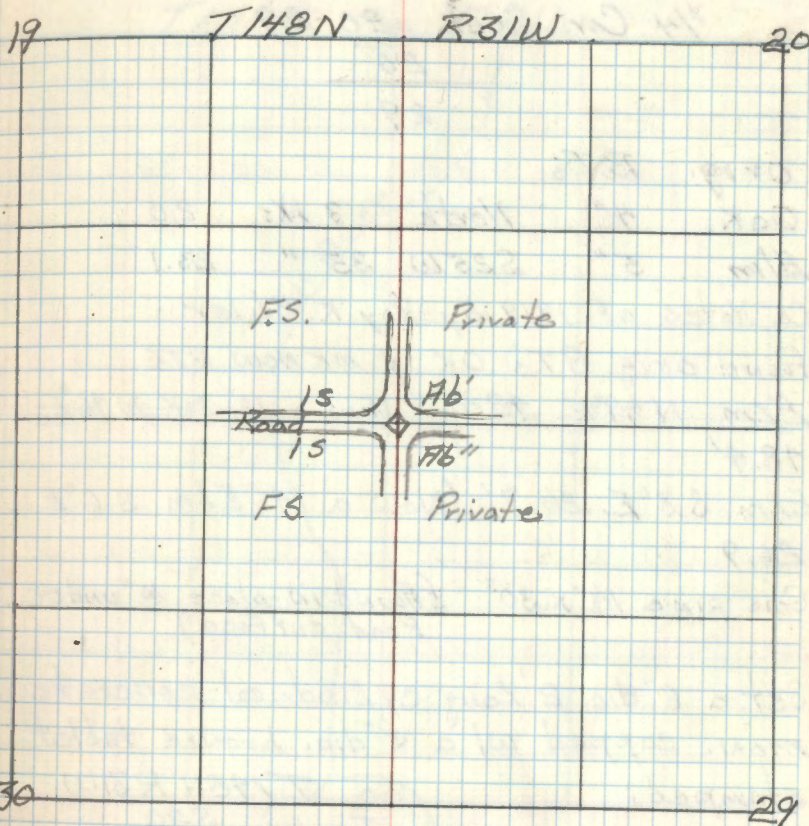
Rock 2.5 x 3.0' 58.7 MKD X S64°E

Rock 2.0 x 1.5' 69.5' MKD X N46°E

6/13/60 Robert A McDonald

Posted 6/29/60 RHM

Affidavit R-5



FS. Metal location postor is on a post from which cor. bears S98 1/2°N 314'

See Corner Card by Allison (1960)

3 R-7

1/4 Cor. Sect. 20-29

20

29

Orig. B.T.'s

Oak 4" North 3 Hs 2.0

Elm 5" S25W 35" 23.1

Co. Notes of 1919 by Roy K. Bliler

Found orig. B.T.'s OK & mk New B.T.'s

Elm N49°E 48.4' (Now a 12" Oak N76°E 48.4')

Elm S3°E 26.7' (Now a 14" Elm S6°E 26.9')

Gas pipe 1 1/2" x 30" (Found in place 10" under Road surface)

Set a 6" dia. 2' long cylindrical concrete mon. capped w/ a 3" dia. bronze tablet stamped:

T198N R31W

1/4 S20  
4 S29

1960

From which bears: - RLS NO 3628

Oak 11" S10°E 78.5' MKD 1/4 S29 BT

Oak 10" N2°E 42.7' MKD 1/4 S20 BT

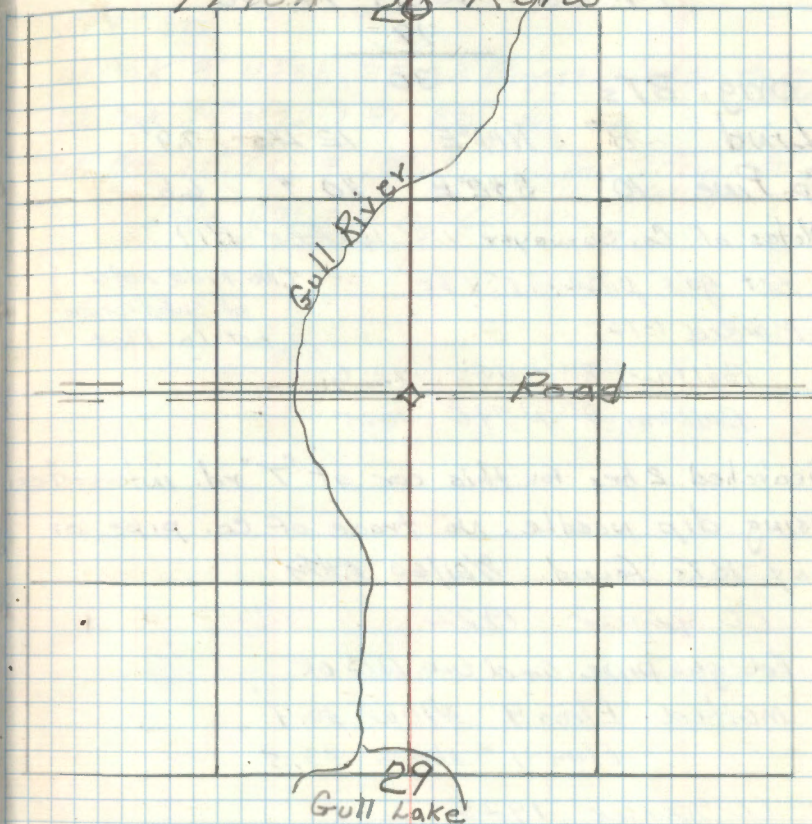
Rock 4' x 3' x 2' N61 1/2°E 39.6' MKD X

September 28, 1960 H.M. Donald

Posted 11-18-60 RHM

R-7  
Affidavit

T198N 20 R31W



Placed F.S. Metal Location poster on the 14" Elm BT from which cov. bears N6°W 26.7'

4 R-3

1/4 Cor. Sect. 19-30

19

Orig. BTs 30

Lind 8" N14°E 12 Lks 7.9'

Sp. Pine 10" S42°E 10 " 6.6

Notes of Co. Surveyor C. L. Spencer 1919

Set gas pipe 1" x 30". (No field notes)

marked BTs: of subdivision  
just Co. Plat

Balsam 8" S49E 12.6'

Balsam 8" N79E 10.5'

Searched 2 hrs for this cor at "T" rd. intersection  
using dip needle. No trace of Co. pipe or  
any BTs found. 9/21/60. RHM

C. L. Spencer 1922

Fd gas pipe and two BTs OK

marked Elm 9" N10W 30.4'

Elm 7" North 33.5'

C. L. Spencer 1925

Fd: BTs OK

9/30/80 J.A. J.O. J.W.

Fd: gas pipe 3/4" down 1 1/2' below road

no evidence of BTs.

position fits plat distance from the

east but 18' too long from the south (1/2 mile)

Old CCC post tag rusted North 20.87'

R9-5680-N

CERTIFICATE FILED

Set: BTs;

W. Oak 8" N53E 35.08' Blayed & scribbled spk by red

W. Oak 24" N32W 91.82' spk Tag

W. Oak 12" S52E 109.91' Blayed & scribbled spk

left gas pipe at corner

5 P-5

1/4 Cor. Sect. 19-20

19 20

orig. BTs

B. of Gilead 12" N46W 12 Lks 7.9'

" " 12" N77E 12 " 7.9

Co. Notes of 1920 by Roy K. Biler on file in  
Beltrami Co. Courthouse.

Elm 14" S44E 75.5'

Spruce 4" S48°W 1.0'

gas pipe 1" x 24"

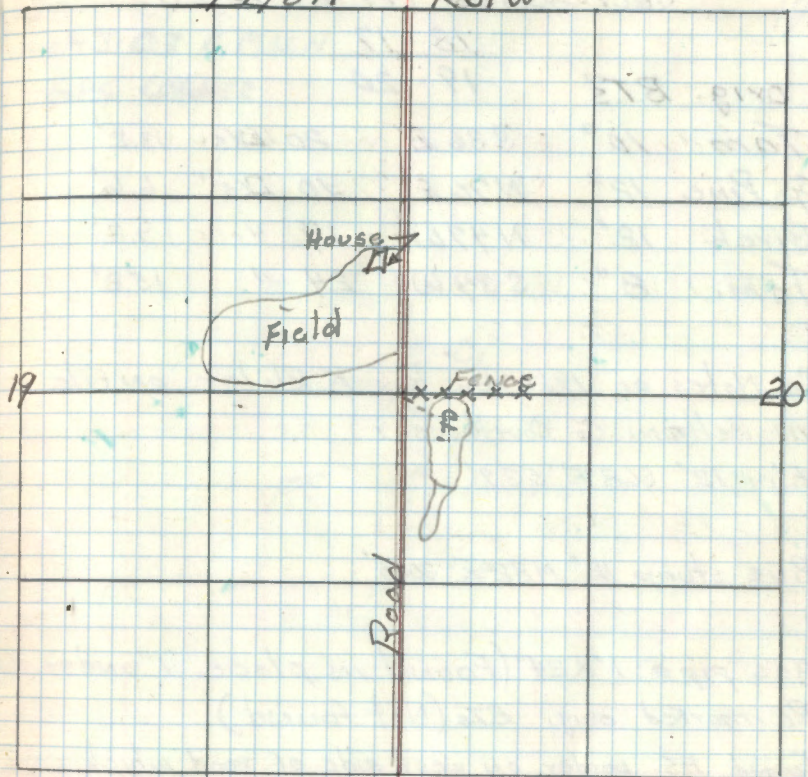
Searched 2 hrs 6/13/60 No evidence found

Searched 1 hr. w/ dip needle 9/21/60 No  
evidence found

R9-5680-11 etc

T148N

R31W



6 N-5

Sect Corner 17-18-19-20

	18	17		
orig. BT's	19	20		
Tam 10"	S36E	20 LKS	13.2'	
Sp. Pine 12"	N76E	10 LKS	6.6'	
Birch 12"	N47W	14 "	9.2'	
Tam. 8"	S34W	24 "	15.8'	

Co. Notes of 1920 by Ray K. Bliley on file  
in Beltrami Co. Courthouse:

Elm 12" S68°E 53.9'

Pine stump 12" N32°E 30.8'

gas pipe 1" x 24" (Found in place 1" under Rd)  
Re-marked orig. BT's (Not found)

Found F.S. post on west side of road which says  
cor. is S89°E 23 LKS or 15.2'

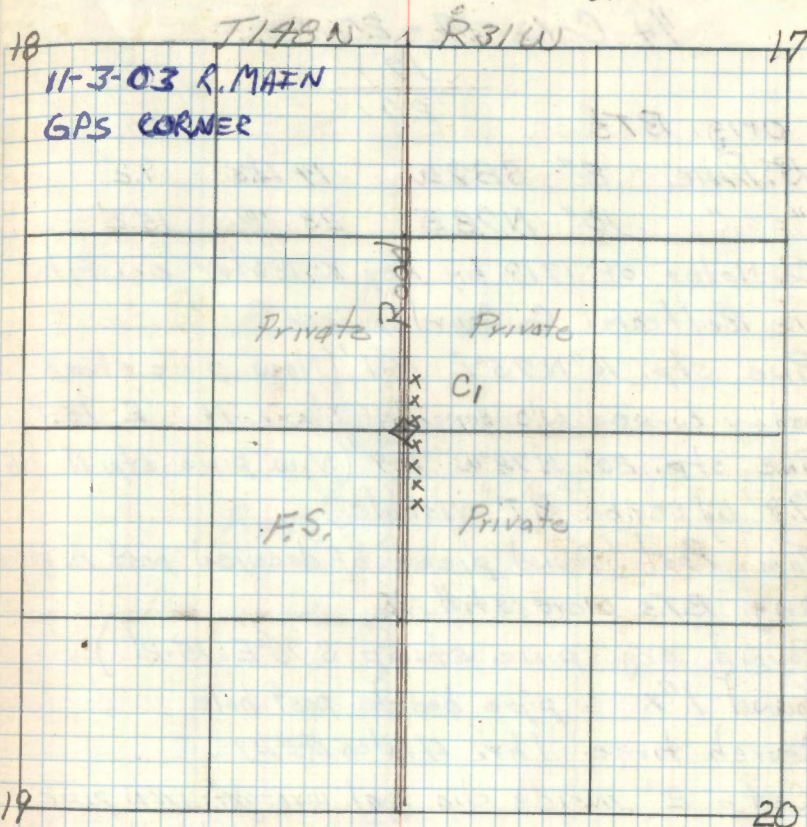
Set a 6" dia. 2' Long cylindrical concrete  
monument capped w/ a 3" dia. bronze tablet  
stamped:

Elm 5" N48°W 38.2 MKD x BT  
FALLS IN Rd CLEARING  
Oak 5" N20°E 62.6 MKD x x BT RLS NO 3628  
RD AND FIELD CLEARING  
Oak 5" S74°W 50.1 MKD x BT  
Now 8" (TWIN)

9/21/60 RHM McDonald

Posted 9/23/60  
RHM

N-5  
Affidavit



F.S. metal location post is on a  
white post from which cor. bears S84°E  
17.9'



7 N-7

1/4 Cor. 17-20

17

20.

Orig. BTs.

R. Pine 8" S87W 14 LKs 9.2'

" " 10" N78E 23 " 15.2'

Co. Notes of 1919 by Roy K. Bliler on file  
in Beltrami Co Courthouse:-Pine stp. 10" N73°E 15.1' (New pine stump  
badly burned w/evidence of blaze N E 15.1')Pine stp. 20" N78°W 18.9' (New pine stp N W  
19.9' w/ scribe "BT" visible)

Tam. Post (found piece of decayed post in ground)

Orig. BTs were still in

(Found orig. pine stump S 78°E 15.2')

Found 1" x pipe beside post hole

Search time 1 hr. 6/14/60 RKM

Set a 2" inside dia. gal. wrought iron pipe

filled w/concrete &amp; capped w/ a 3" dia. bronze

Tablet stamped:-

T148N R31W

1/4 S12

1/4 S20

1960  
RLS No 3623

Oak 8" N9 1/2°E 38.4' MKD 1/4 S17 BT

Oak 4" S22 1/2°E 29.5' MKD X BT

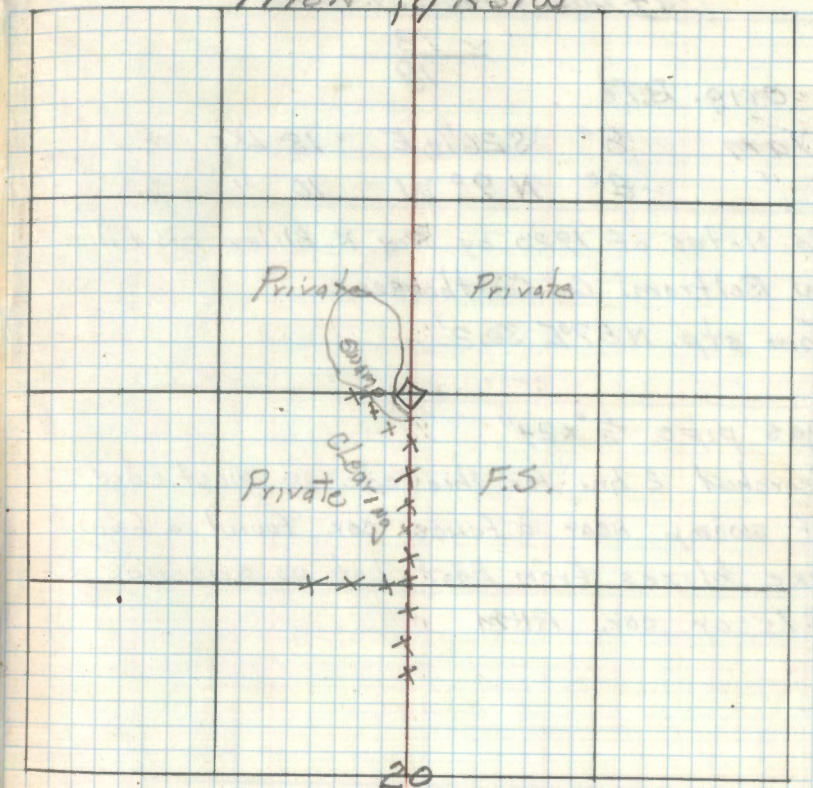
Tam 4" S84°E 34.5' MKD X BT

6/17/60 P.A. Miller

Posted 6/24/60 RKM

N-7  
Affidavit

T148N, R31W

Placed F.S. Metal Location post on a  
4" Oak BT from which cov. bears N22 1/2°W 29.4'P.A. Miller  
12-15-60

8 N-3

1/4 Cor. 18-19

18  
19

orig. B.T.'s

Tam 8" S26 1/2° E 13 LKs 86

" 8" N9° W 10 " 66

Co. Notes of 1920 by Roy K. Bliler on file  
in Beltrami Co. Courthouse:

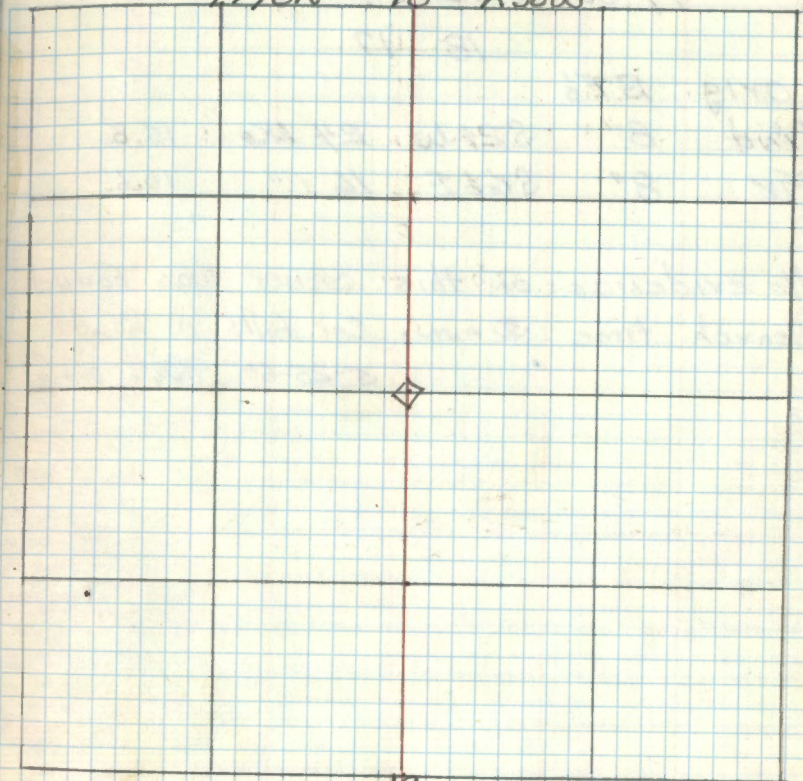
Tam stp. N87°E 30.2'

gas pipe 1/2" x 24"

Searched 2 hrs for this cor. in west edge  
of swamp near a fence cor. found a few  
live blazes from East but no evidence of  
B.T.s or cor. RHM

R9-5682-11

T148N 18 R30W



19

9 L-5

1/4 Cor between 17-18

18 | 17

orig. B.T.'s

Lind 8" S21W 24 LKs 15.8'

Fiv 8" S66E 16 " 10.6'

No evidence of this corner was found

Search time 30 min. Cor. falls in Road

5-25-60 ~~F.H.H.~~ *Omole*

A9-5680-11 He

10 J-5

Section Cor. 7, 8-17-18

7	8
18	17

orig. B.T.s

Fir	6"	N40°W	17 LKs	11.2'
Fir	6"	N35°E	8 LKs	5.3'
"	5	S59°W	18 "	11.9'
Spruce	8"	S51°E	28 "	18.5'

Co. of 1919 by C.C. Spencer on file in  
Beltrami Co. Courthouse:

Pine stp. 24" N22½°W 57.0 (Now a pine stp  
partly decayed N22½°W 57.0')

Tel. pole 6" N77°W 25.6' (Now Tel. pole N77°W  
25.6' w/ scribe "BT" visible)

Cement monument (No evidence was found  
road was cut down & monument destroyed)

Set a 6" dia. 2' long concrete monument capped  
w/ a 3" dia. bronze tablet stamped:- T148NR31W

S758  
S18517  
1960  
P.L.S. No. 3628

Birch 5" N45°E 70.2' MKD T148NR31W S8BT

Rock 35" dia. N15°W 111.1' MKD X

Cedar post 4"x4"x5' S48°E 43.8' MKD (w/ F.S. metal Location  
Poster

Cedar post 4"x4"x5' S37°W 57.4' " " " "

Treated & w/ Red Top

May 25, 1960 (T.A.M.P. Donald)

Posted 6/7/60 HMM

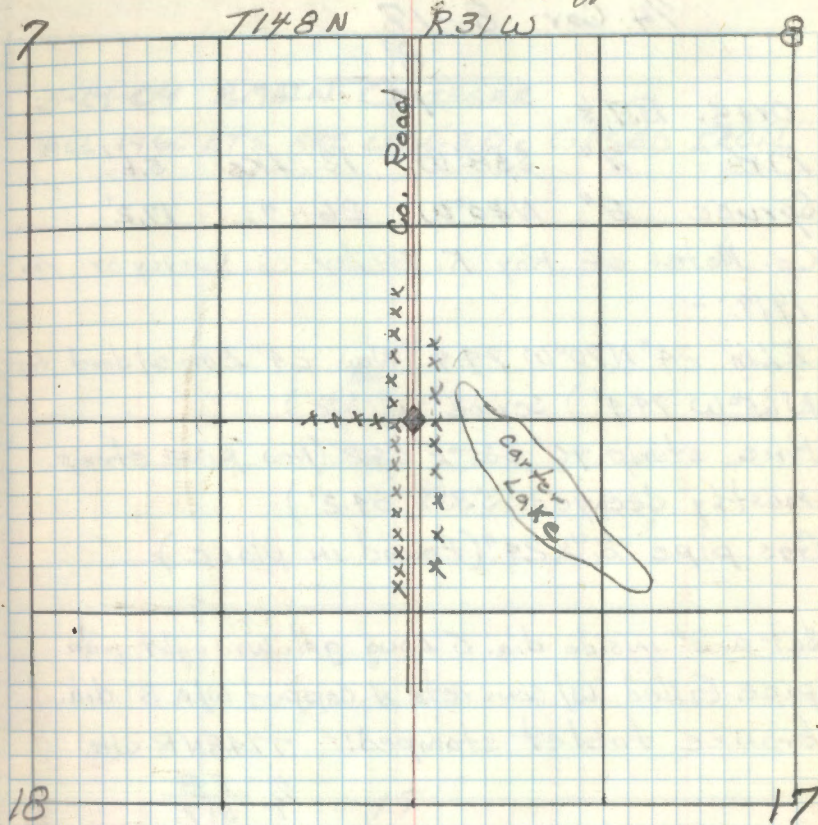
T-5  
Affidavit

7

T148N

R31W

8



18

17

Placed F.S. metal location poster on a 11"  
Cedar Fence post from which cor. bears S89E  
31.7'

11 J-7

1/4 Cor 8-17

8

Orig. B.T.'s 17

Fir 7" S58°W 13 AKS 5.6'

Spruce 8" N20°W 26 " 17.2'

Co. Notes of Roy K. Bliker Co. Surveyor in  
1919: -Elm 24" N70°W 99.9' (Now 24" Elm w/ dead top  
N65°W 99.9') Scribe visible)Pine stump 70" S35°E 89.2' (Now pine stump  
mostly decayed S33°E 89.2')

Gas pipe 2" x 24" (Found in place)

Set a 2" inside dia. 5' long gal. wrought iron  
pipe filled w/ concrete & capped w/ a 3" dia.  
bronze tablet stamped: - 7748NR31W1/4 58  
517

1960

RLS NO 362B

From which bears: -

Elm 11" N74½°E 96.1' MKD 1/4 SB BT

Oak 7" N36°W 69.6' " 1/4 SB BT

Oak 5" S87°W 53.2' " 1/4 S17 BT

11-7-60 R.A. McDonald

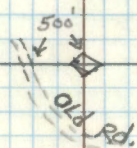
Posted 11-18-60 RMM

J-7  
Affidavit.

8

3-24-04 R. MAIN C. GIEGER

ALL 1960 B.T.S ARE LOGGED. GPS'ED IRON



17

Placed F.S. Metal location poster on a  
7" Aspen from which cor bears N62°W  
7.3'Placed F.S. poster on old road 500' West  
of 1/4 Cor.RMM  
12-14-60

12

 $\frac{1}{4}$  Cor Sec's 7-18

---

7

orig. BTs	18			
Cedar	6"	N45°E	68 LKs	44.9'
Tam	8"	S22°W	16 LKs	10.6'

13 G-5

1/4 Cor Sec's 7-8

7 | 8

Orig. BTs

Birch 10" N75°W 54ks 3.3'

Fir 6" N83°E 4" 2.6'

Co. Notes of 1919 by C.G. Spencer on file  
in Beltrami Co. Courthouse: -Tel. Pole N35°W 52.8' (Now Tel. pole N37°W  
52.8' W/ scribe "BT" visible)Elm 6" N75°E 61.7' (Now Elm wind fall  
mostly decayed N68°E 41.7')Gas pipe 1" x 24" (Found in place 8" under  
road surface. Found 2' Cedar post beside  
gas pipe)Set a 6" x 24" concrete cylinder capped w/  
a 3" dia. bronze tablet stamped: -

T148N R31W

Monument is set 8" below  
road surface

S7 | S8

1960

RLS NO 3628

Set new BTs

Asn 5" S71°E 55.2' MKD x BT

Elm 6" N69°E 46.2' MKD 1/4 S8 BT

Elm 7" N44°E 52.9' MKD 1/4 S8 BT

May 20, 1960 G.H. McDonald

Posted 6/7/60 RHM

G-5  
Affidavit

T148N R31W

Placed a F.S. Location post on a 5" Aspen  
from which cor. bears S74°W 72.6'

5-20-60 RHM

14 E-5

Sec. Cov. 5-6-7-8

6	5
7	8

orig. RT's

Fir	6"	N20E	24 LKs	15.8
Cedar	7"	S 70°W	14 LKs	
"	6"	N 45°W	22 LKs	
Tam	10"	S 70°E	31 LKs	

Co. Notes 1919

Tam stp. N36E 36.9'

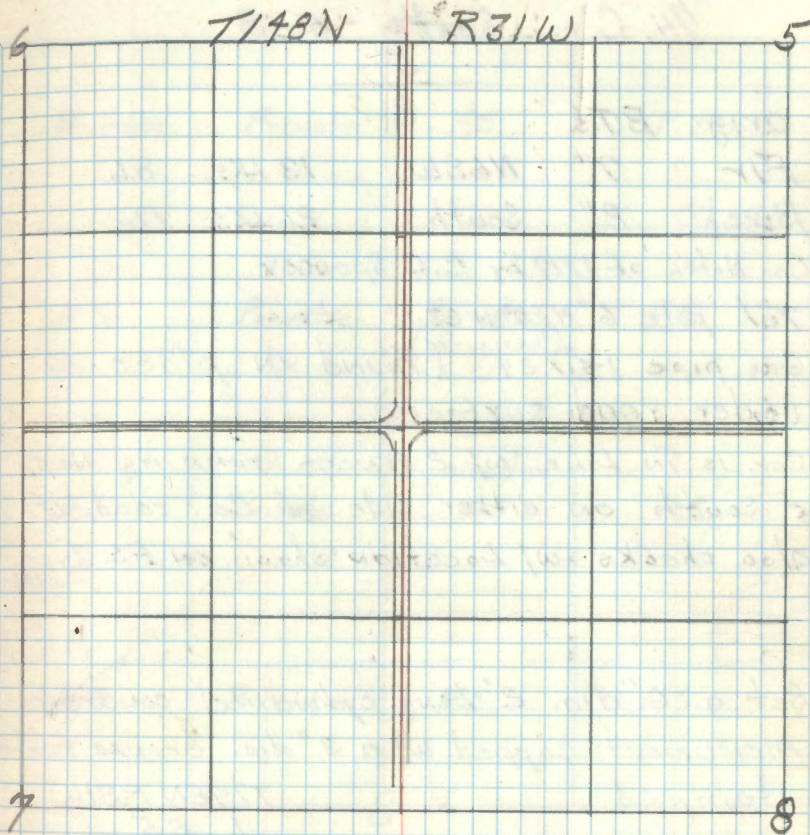
Sp. stp. N60°W 46.2'

Cement monument & bottle in mound.

Govt. RT's Found O.K. by Co. in 1919

Searched 2 hrs at Rd. intersection - dug for monument but did not find it RHM

R9-5680-11 2nd





15 E-7.

1/4 Cor. Sect's 5-8

5

Orig. B.T.'s 8.  
 Fir 7" N68W 13 LKs 86'  
 Birch 8" South 26 LKs 17.2'

Co. Notes of 1919 by C. C. Spencer

Tel. pole 6" N20°W 23.1'

Gas pipe 1 1/2" x 24" (Found in place 10" under road surface)

Cor. is in line w/ 2 fences running North & South on either side of Co. road it also checks w/ location shown on F.S. Type map.

Set a 6" dia. 2' Long cylindrical concrete monument capped w/ a 3" dia. bronze tablet stamped

T148N R31W

1/4 S5/SB

1960  
RLS NO 362B

From which bears:-

Oak 12" S74°W 50.8' MKD 1/4 SSBT

Maple 8" S6 1/2°E 87.9' " 1/4 SSBT

Oak 6" S36°E 89.8' " 1/4 SSBT

(clump of 3)

9/21/60 RMM Donald

Posted 9/23/60  
RMME-7  
Affidavit

Private	Private	F.S.	F.S.
F.S.	Private Field	Private (Reynard) Field	F.S.
--- CO. ROAD ---			
F.S.	Field Private	woods F.S.	F.S.
F.S.	Private	F.S.	F.S.

Placed on F.S. Metal location poster on 12" Oak from which cor bears N74°E 50.2'

1/4 Cor. Sect's 6-7

6

7

orig. B.T.'s

Birch 10" S2W 20 LKs 13.2

Cedar 6" N18E 7 LKs 4.6

1/4 Cor. Sec. 5-6

6 5

Orig. B.T.s

Cedar	10"	N 74 E	8 LKs	5.3'
"	6"	N 58 W	4 LKs	2.6'

Co. Notes of 1919 by C.C. Spender

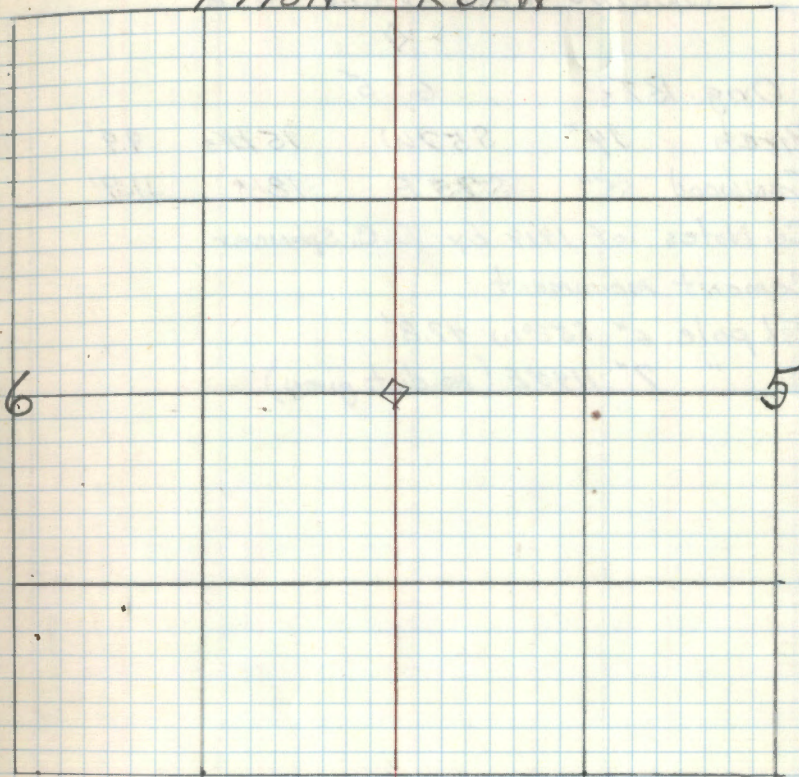
Maple 8" S 60° W 59.6'

B. Wood 5" S 75° W 57.1'

Gas pipe 1" x 24"

CERTIFICATE FILED

T 178 N R 31 W





19 Notes for Town Line between  
T148 & T147N - R31W

R9-5680-11 HW

1/4 Cor. Sect's 31-6

31'

6

Orig. B.T.'s

Birch	3"	S 46 1/2° E	32.43	21.1'
"	3"	N 20° E	49"	32.3'

Sect's 5-6-31-32

31 32

6 5

orig. B.T.'s

Poplar	3"	S 18° W	26 LKs	12.2'
"	4"	S 30° E	60 LKs	39.6'

21 Z-7

1/4 Cor. Sect's 5-32

32

5

orig. BTs

Tam.	5"	SB°W	9 LKs	5.9'
"	6"	N31W	13 "	8.6'

5/29/86 JA DG (Belt Co.)

Chained East From the SW SEC 32 (mon.)  
a dist. of 2640. Did not fit original calls  
as we fell on other side of river.

Chained West From the squared post at  
SE SEC 32 a dist. of 2640. Fit calls  
reasonably well and this area looks  
like where the corner could be. Fd  
a few tamarack stumps in area but  
no evidence of corner. This mile dist.  
w approx 5020' - look like original run  
from the SE SEC 32 west to '14 and left  
the rest hang. Could return to search  
more.

cc

R9-5680-11 H43

Sect. Cor. 4-5-32-33

32 | 33

5 | 4

orig. B.T.s

Tom.	4"	N89E	528 LK <sub>6</sub>	345.5'
"	4"	S88½E	540 "	356.4'

5/29/86 Fd: 3" squared x 5' post  
 Standing upright 3' above bog  
 surface. Found no scribing. Chained  
 South 3280' from NE Dist and bearing  
 good. Chained west to 1/4 sec. 32  
 ties fit good - no evidence of corner  
 chained to SW Sec. 32 dist is 5020'  
 Fd two tamarack stump in area of  
 recorded dist and bearing of original B.T.s  
 SET:

Fiberglass sign post	8'	East	4.10'
Fiberglass sign post	8'	West	4.20'
Fiberglass sign post	8'	North	3.10'
Fiberglass sign post	8'	South	3.40'

2" x 2" x 90" squared Belt. Co. Capped Iron  
 monument 6" above bog marked  
 with the wood post on north side  
 of monument.

09.

T48N R31W

S32.5 33

25	5	5	54
1986	15870		



Z-11 1/4 Sect Con 4-33

33

Orig. B.T.'s

4

W. Pine	14"	S56E	14 LKs	9.2'
" "	10"	N45E	10 "	6.6'

REFER TO BK1 T147R31.

Sec. Cor. 3-4-33-34.

33 34

4 3

Orig. BTs

Tam	5"	N66E	11 AKs	7.3'
"	5"	N5W	24 "	15.8'
"	5"	S25W	19 "	12.5'
"	5"	S73E	10 "	6.6'

1/4 Cor. between Secs 3-34

34

3

orig. B.T.'s

Poplar	3"	N51E	43Ks	28.4'
Alder	3"	S39W	39 "	25.7'

M.C. between 34-3

34

3

orig. B.T's

W. Pine	10"	S9½W	29LKs	19.1
Poplar	3"	N72W	34 "	22.4

M.C. between 2-35

35

2

orig. B.Ts

Cedar	3"	S5°W	3 LKs	2.0'
Spruce	8"	N3°E	6 "	4.0

West Side of Point W  
South twin lake

2-28 11:00 AM

MC between 35-2

35  
2

orig. RTs

Cedar	8"	N83W	73 KKs	48.2'
Poplar	3"	S82W	59 "	38.9'

East side of Point IN  
South twin lake

29 Z-19, 20

M.C. between Sects 35-2

$$\begin{array}{r} 35 \\ \hline 2 \end{array}$$

orig. B.T's

Yellow Pine	12"	N10W	46 LKs	30.4
" "	6"	S6E	96 "	63.4'

No evidence of this corner could be found

10-5-59

R.H.M. Donald

$$\begin{array}{r} 96 \\ 66 \\ \hline 576 \\ 576 \\ \hline 63.34 \end{array} \quad \begin{array}{r} 100 \\ 76 \\ \hline 256 \\ 256 \\ \hline 30.86 \end{array}$$

R 4-56 80-11 HU

30 Z-21

Aug. 31, 1959 J. Glick

R9-5680-11 8W

Sect. Cor. 1-2-35-36 J. Lausehe

35 | 36

2 | 1

orig. B.T.'s

Birch	10"	N25°E	13 LKs	8.6'
"	12"	N62°W	20 "	13.2
Pine	10"	S53°W	24 "	15.8
Fir	10"	S20°E	6 "	4.0

Found F.S. location poster on birch tree on west side of road. Found location poster dated 1937 on post on east side of road but distance and bearing were obliterated.

No bearing trees or possible B.T. stumps were found and evidence implies that the road (2177) has obliterated all original B.T.'s



31 2-23

1/4 Cor. between 1-36

36

1.

orig. B.T.'s

Maple 8"	S 7 1/2° E	56 LKs	37.0'
Maple 10"	N 49° E	38 "	25.1

No evidence found

36  
125442  
36  
96  
72  
100

36  
300

32 2-23, 24

M.C. between 36-1

36

1

orig. BT's

Ash	12"	N82°W	40 AXs	26.4'
"	7"	S82½°W	31 "	20.5'

No evidence found

M.C. between 36-1

36

orig. B.T.'s

E/m 8" N 3°W 25LKs 16.5'

M.C. between 36 - 1

36

1

orig. B.T.S

Ash 12" N37W 21LKs 13.9'

35 V-25.

Sept. 1, 1959 J. Glick  
T. Lauseche

Sec. Con bet. Sec 25, 36 T148 R31  
and Sec 30, 31 T148 R30

Found conic shaped concrete monument that shows evidence of having been scraped with grader. Digging around monument revealed two pieces broken off monument with reinforcing wire sticking out. The monument is in the center of the cross road intersection.

Set 6" diameter 2' long concrete brass capped monument buried 10" below road surface

Posted R31W

**CERTIFICATE FILED**

V-25  
Certificate

from which bears

Sec 25, T148N R31W W. Oak 5"  
N 51 1/2° W 116.4'

Sec 36 T148N R31W W. Pine 12"  
S 78 1/2° W 203.3'

Sec 30 T148N R30W W. Pine 16"  
N 31° E 78.0' Marked B.T. only

Sec 31 T148N R30W R. Pine 13"  
S 46° E 86.5'

Metal F.S. location poster is set on W. Pine 14" from which corner bears N 39 1/2° W 46.0'

Monument is stamped

T148N

R31W | R30W

S25 | S30

S36 | S31

1959

R.L.S. NO. 3628

Joseph H. Lauseche 9/1/59 J. Glick

36 X-25

$\frac{1}{4}$  between 31-36

R31 36 Q 31 - R30

Orig. Bts.

Cedar 6" N51E 57.4 - 37.6

Cedar 8" N5W 60.4 - 39.6

No evidence of Orig Bts.

9/8/59  
Joseph F. Lusche

R9-5680-11 HE

37 A-1

24-25 T148N R32W

Sec. Cor 19-30 T148N R31W

Co. Notes of 1919 by Roy K. Bliley on  
file in Beltrami Co. CourthouseElm N84°W 8.1' (Now a 12" Elm S81°W  
8.1' w/ scribing decayed)Elm East 9.6' (Now Elm stump N88°E  
9.6' no scribe visible partly decayed)Cor. is marked by a 1 1/2" pipe w/ an iron  
cap stamped: -

R <sup>32</sup>	19
24	19
25	30
T148	T148

Search time 15 min. 6/9/60 R.H. McDonald  
Set a 6" dia. 5' long cylindrical concrete mon.  
capped w/ a 3" dia. bronze tablet stamped:

Note. concrete mon.

is set on North side of  
iron pipe. New BT's are  
referenced to concrete mon.

T148N	R32W	R31W
S24S19		
S25S30		
1960		
RLS NO. 3628		

Ironwood 6" N62°W 48.7' MKD x BT

Elm 10" S42°W 60.0' MKD T148N R32W S25BT

Ironwood 5" S41 1/2°E 8.7' MKD x BT

Maple 11" N21°E 26.3' MKD T148N R31W S19BT

6/25/60 R.H. McDonald

Rooted 7/22/60 RHM

R-1  
Affidavit

24 T148N R32W

T148N R31W

19

Private

F.S.

Private

F.S.

Forest Boundary Beltrami Co. Road

25

30

Placed F.S. Metal Location poster on 12"  
Elm BT from which cor bears N81°E 8.1'  
Orig Notes of Govt Survey of 1874  
Burr Oak N25°E 30 Lks or 19.8' (Now a large  
oak stump partly decayed N25°E 19.8'  
Elm 5" S24°W 22 Lks or 14.5' (Now stump hole S24W  
14.5')

38 T-1

Sec 25 T148 R32

1/4 Cor. between Sec 30 T148 R31

Org. Notes of Govt. Survey of 1874

Sugar 7" N70°E 15.1Ks or 9.9' (No evidence)

Sugar 7" N20°W 70.4Ks or 46.2' Found

Co. Notes of 1919 by Co Surveyor Roy K. Bliler  
on file in Beltrami Co. Courthouse:-Maple 14° S88°W 31.0 (Now 18" Maple S85°W  
31.0') <sup>4/8/85</sup> Now a Maple 5" or 19"W. Pine 6" S10°E 22.3' (Now 22" W. Pine S 3° W  
22.3')A 1 1/2" pipe was found marking the corner  
Placed on south side of conc. cyl. 4/5/85Set a 6" dia. <sup>5" long</sup> cylindrical concrete monument  
capped w/ a 3" dia. bronze tablet stampedT148 N  
R32W 1/4 R31W.

S 25 530

1960

RLS NO 3628

From which bears

Oak 13" N 12°E 25.75' MKD 1/4 530 BT

Maple 6" <sup>18"</sup> S70°E 28.1' " " "W. Pine <sup>13"</sup> S20°E 68.4' " " "

7/5/60 RMM Donald

4/8/85 - Found R. Oak 19" N12E 25.75' w/ the main top  
broken off. Maple 8" S70E 28.1 is dead

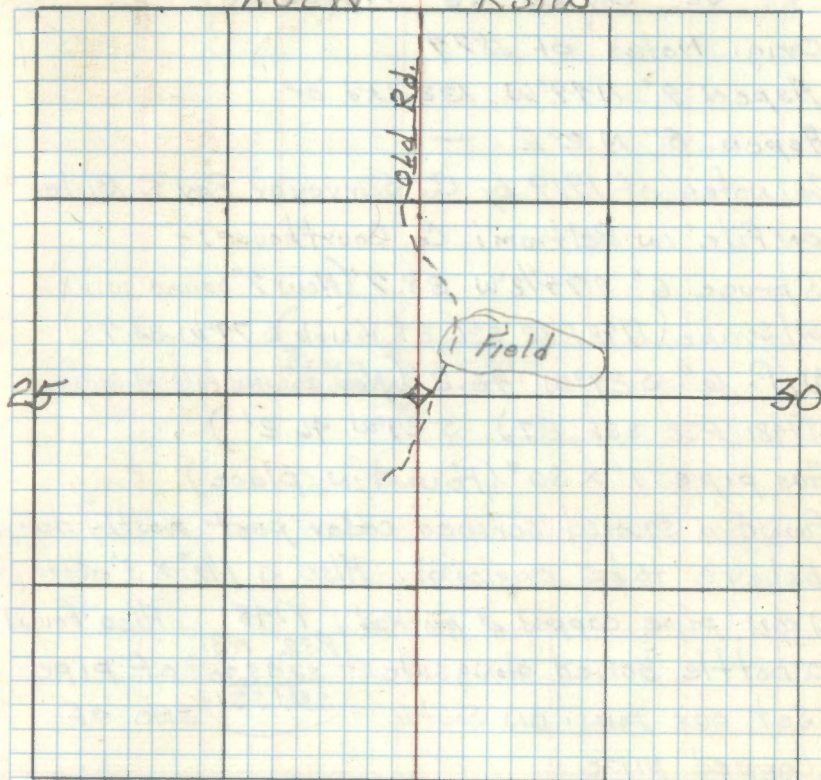
Posted 7/22/60 RMM

T148N

F-1  
Affidavit

R32W

R31W

RMM  
12/16/60Placed an F.S. metal Location on a  
5" Maple from which cor. bears S88°W  
5.0'Placed Post on old Rd. 68.4' East of Cor.  
4/8/85 - CK, CB, JA  
MKD New BT'S:  
1. Red Oak 10" S82E at 32.8' 1/2 S30 BT

Line to standard north &amp; south



39 V-1

30-31

T148N R31

Sec. Cor 25-36

T148N R32

Orig. Notes of 1874

Aspen 9° N49°W 133 Lks or

Aspen 8° N 2°E -

Co. notes of 1919 by Co Surveyor Roy K. Bliley  
on file in Beltrami Co. Courthouse:-Spruce 6" S74½°W 38.7' (Now 7" Spruce wind fall  
w/ scribe (T148R32 S36 BT Visible) S74°W 38.7')W.P. 6" S29°W 46.2' (Now a wind fall w/ scribe  
T148 R32 S36 BT) S29°W 46.2')

Gas pipe 1" x 30" (Found in place)

Found a squared scribed cedar post mostly decayed,  
believe to be original. Also a 1½" x 3" above gr.Iron pipe capped & marked T148 Also found  
a bottle buried alongside S29 S30 of pipe

Set our mon. on South S36 S31 side of

capped pipe

A 2" inside dia. 5' long gal. wrought iron  
pipe capped w/ a 3" dia. bronze tablet stampedT148N  
R32W R31W  
S25 S20  
S36 S31  
1960 R15 N03628

Cedar 6" N41°W 38.3' MKD S25 BT

Cedar 6" S47°W 18.6' " S36 BT

Cedar 7" S29°E 32.6' " T148N R31W S31 BT

Cedar 7" N58½°E 77.4' T148N R31W S30 BT

11/2/60

J.A.M. Donald

Posted 11-28-60 RHM

T148N

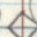
V-1  
Affidavit

25

R32W

R31W

30

Balsam  
Aspen  Swamp

36

S89W

27.7

31

Placed a F.S. metal location poster on a  
5" Tam from which cor bears S89°W 27.7'J.A.M.  
12-16-60

40 P-1

Sec 24 T148N R32W

1/4 Cor Sec 19 T148N R31W

Notes of Co. Surveyor Roy K. Bliler in 1920

Pine stump <sup>14"</sup>N 40°E 34.3' (Now pine stp. badly burned w/ Blaze facing corner N 48°E 34.3')

Pine stp. 18° N 60°W 40.8' (Now a stump hole N 53°W 40.3')

Cor. was found to be marked w/ a 3/4" x 18" pipe buried under road

Orig. Notes: -

White pine 18" S 60°E 20 LKs

White pine 10" N 20°W 12 LKs

No evidence of orig. were found

Set a 6" dia. 30" long cylindrical concrete mon. capped w/ a 3" dia. bronze tablet stamped:

T148N  
R32W R31W  
Sec 24 | 519

1/4  
RLS 12 60 3628  
NO

4x4x6' Treated cedar post N 45°E 33.1'

" " " " S 44°E 36.3'

Open 7" N 31°W 64.9' MKD "1/4 S BT"

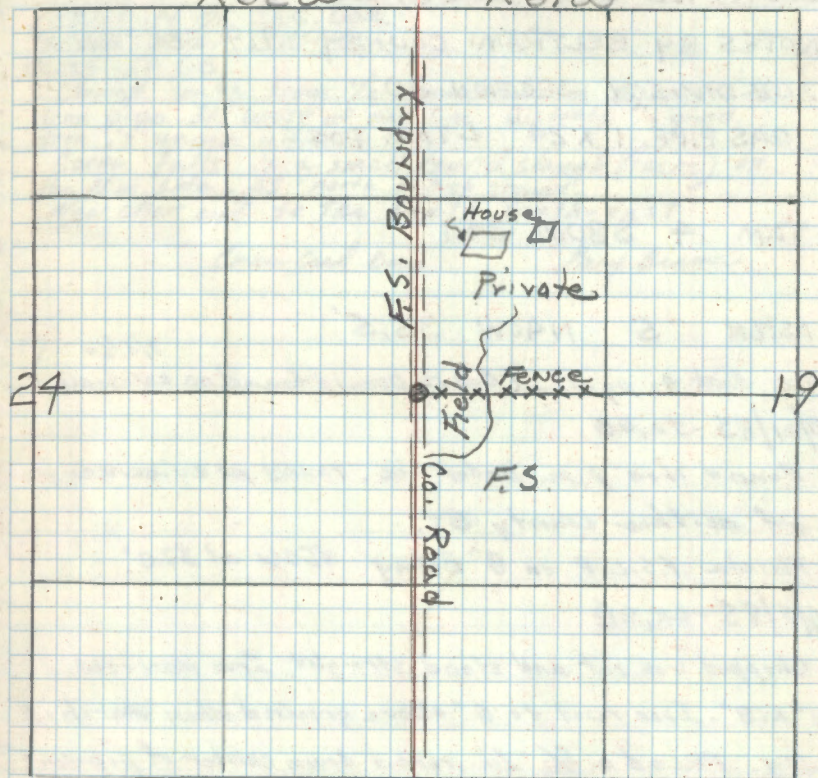
Posted 11-28-60  
RHS

T148N

P-1  
Affidavit

R32W

R31W



41  
4-1

SOUTH 1/16 BET. SEC'S. 25 & 30

NOTES BY BELTRAMI COUNTY 1919 SECTION

SUBDIVISION SECTION 30

GAS PIPE 1" X 24" TAM POST

TAM 4 S80W 34.1'

ASPEN 5 N40W 35.5'

See book 4, pg. 11. (Bob McDonald found no evidence) <sup>7/5/60</sup>

3/21/85 - JA, GB

Found iron pipe under ice. Found no evidence of another county BT.

Placed a F.S.L.P. on 8" Balmey N50W at 37.0'

4/5/85 - CK, GB

Chopped iron out and stood straight. Iron measures 1" X 18". Iron reset to 6" above ground when marsh is dry. Placed a 5/16" dia. rod down center of pipe. Placed 5 rocks around base.

Balm of Gilead 8" N50W 26.65' <sup>mhd.</sup> 5 1/6 S25 BT

W. Oak 8" N15E 12.00' 5 1/6 S30 BT

W. Oak 5" N43E 60.3 5 1/6 S30 BT

8" steel sign post north 4.05' and east 3.75'  
with both signs attached. (Measurement to nearest edge)  
Line to standard mhd. north & east from corner.

1321.1' N OF SEC. COR.

957.0' W OF SW 1/16

3/21/85 - JA, GB

Chained south from 1/4 corner bet. sec. 25/30. Found iron pipe 33' west of our line. Distance is good. Iron is under ice.

Corner falls in a small round slough (1 acre) on the NW side. 45' north to high ground.  
New clear cut to the south, south-east

Corner Card Done

Mary Brana

## U-2 SOUTH WEST 1/16 SEC. 30

NOTES BY BELTRAMI COUNTY 1919 SECTION

SUBDIVISION SECTION 30

GAS PIPE + CEDAR POST

ASPEN 8 N75W 16.6'

CEDAR 4 S75W 18.5'

7/5/80 Bob McDonald found no evidence. See Book 9, pg. 12

3/21/85 - Found 1/2" gas pipe leaning. Found no

remains of county BT'S at this time. (snow conditions)

Placed a F.S.L.P. on Cedar 12" S19E at 9.0.

4/5/85 - CK, GB

Mkd. new BT'S:

1. Cedar 8" N86W 78.2 SW 1/16 S30 BT

2. Cedar 12" S15E 9.65 SW 1/16 S30 BT

3. CEDAR 10 N65E 20.80 SW 1/16 S30 BT

8' steel sign posts north 4.75 and west 4.80

with both signs attached.

Lines north and west are mkd. to F.S. Standard.

3/21/85 - GB JA

Chained east from SW 1/16 951'. Found 1/2" gas pipe leaning. Distance chained 948'. Line fell 50' north of pipe. New clear cut south-south-west of corner approx. 50' from corner.

NORTH WEST 1/16 OF SECTION 30  
 NOTES OF BELTRAMI COUNTY 1919 SECTION  
 SUBDIVISION OF SECTION 30  
 GAS PIPE

OAK 3 S30W 37.0'

BIRCH 3 S42W 27.0'

3/21/25 - Found no evidence of a gas pipe at plat  
 distance. (see adjacent page) Found a 14" W. Oak  
 S38W at 37.0' that would fit at plat distance.  
 Also a north and east old fence posts  
 partially down, fit this area.

3/21/25 - JA, GB

Chained east from NW 1/4 954.6'. Found a galv. iron  
 pipe 39' short of plat distance. Corner would  
 fall in the south-west corner of a old field.

4/4/25 - CK, JA, GB

Established a straight line between CW 1/4 and W 1/4  
 and a point for the approx. NW 1/4. Measurement  
 and bearing to the 14" W Oak are S43W, 39.8'  
 Line to std. North & South of this approx. corner.  
 Measurement to the galv. pipe is 43'

3-17-CH R MAIN

FD IRON IN PLACE LAYING DOWN 8" UNDER  
MOSS. STRAIGHTEN IRON, GPS, AND WITNESS.  
IRON FALLS IN TAMARACK AND BLACK SPRUCE  
OLD FENCE NORTH AND SOUTH.

B SPRUCE 6" N78°W 7.40FT TO SPK MKD°S18 BT

TAMARACK 8 N30W 14.60FT TO SPK MKD°S18 BT

END OF  
BOOK 2