

T148 R27 Bk3

TRAVERSE



Field Book
115300

Bk.3

T148NR27W

Traverse

INDEX T148 R27

Pg 3-7 TRAVERSE EX 4 S 31 TO SEC CORNER OF 31 HENCE WEST

Pg 8 SET N 1/4 6 BET SECTION 31-32

Pg 9 CONTINUE TRAVERSE FROM Pg 7 N 1/4 31 TO
NW 1/4 31

Pg 13- TRAVERSE NE SEC 15 TO 1/4 10
15

The paper in this book is
made of 100% high grade rag stock with
a water resistant surface finish.

FT M

FS 3 331-2447 151-2455 331-25-03 151 2447
 BS 1 180-00-00 00-00-10 180-00-14 00 00 07
 Tc2 151-24-47 151-24-45 151-24-49 151-24-40

151-24-45

VD2-1 91-01-30 268-59-00 91-01-15 308.09 / 93.907
 VD2-3 09-40-05 270-20-15 89-39-55 189.32 / 57.703

FS 4 195-54-38 15-54-46 195-5440 15-54-45
 BS 2 00-00-08 180-00-12 00-00-04 180-00-13
 Tc3 195-54-30 195-54-34 195-54-36 195-54-32

195-54-33

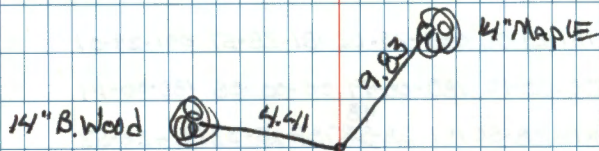
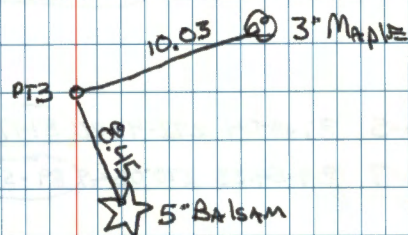
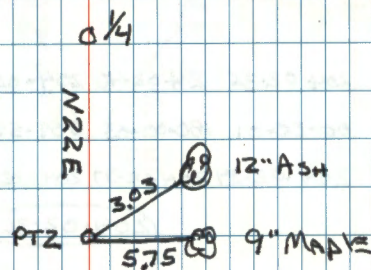
FS 5 157-41-13 337-41-17 15740 57 337.4106
 BS 3 00-00-35 180-00-30 00-00-10 180-00-17
 Tc4 157-40-38 157-40-47 157-40-47 157-40-49

157-40-45

VD 4-3 90-37-42 269-22-40 90-37-31 434.21 / 132.35
 VD 4-5 90-24-02 269-36-21 90-23-21 345.35 / 105.262

CLEAR 50°
 3-23-92
 Wild T.2 RED 1A

T R M A E U 3.
 D M A E I
 D O J A N E N



FS @ 6 204-02-35 24-02-40 204-02-30 24-02-35

BS @ 4 00-00-01 180-00-03 359-59-55 180-00-00

TC @ 5 204-02-34 204-02-37 204-02-35 204-02-35

204-02-36

FS 7 168-54-34 348-54-44 168-54-34 348-54-44

BS 5 00-00-10 180-00-15 00-00-08 180-00-20

TC @ 6 168-54-24 168-54-29 168-54-26 168-54-24

168-54-26

VA 6-5 87-18-04 272-4220 87-17-52 200.23 / 61.025

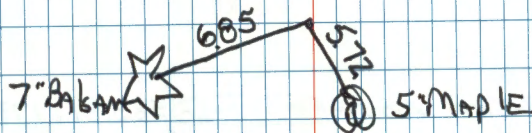
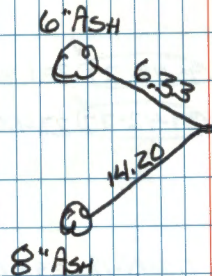
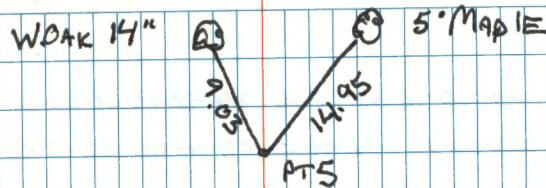
VA 6-7 89-54-33 270-05-49 89-54-22 187.99 / 240.182

FS - 8 181-29-00 081-29-02 181-28-57 001-29-07

BS - 6 00-00-10 180-00-14 00-00-05 180-00-14

TC - 7 181-28-50 181-28-58⁴⁸ 181-28-52 181-28-53

181-28-53 51



FS 9	241-20-42	61-20-56	241-20-50	61-20-50
BS 7	00-00-10	180-00-10	00-00-05	180-00-13
TC 8 ^{SEC} _{GR}	241-20-32	241-20-46	241-20-45	241-20-37
	(241-20-40)			

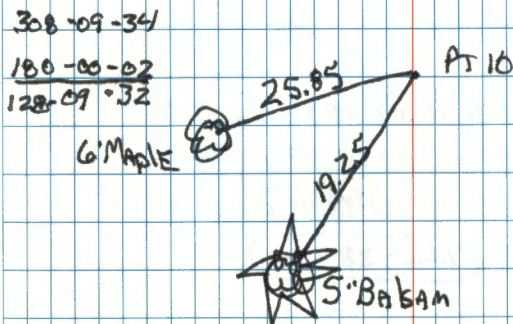
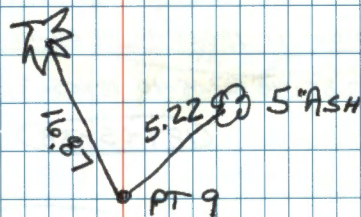
VA 8-7	90-49-32	269-10-39	(90-49-27)	381.86 / 116.390
VA 8-9	89-42-43	270-17-29	(89-42-37)	234.02 / 71.331

FS 10	115-14-22	295-14-21	115-14-19	295-14-25
BS 8	00-00-13	180-00-13	00-00-17	180-00-20
TC 9	115-14-09	115-14-08	115-14-02	115-14-05
	(115-14-06)			

FS 11	128-09-34	308-09-27	128-09-01	308-09-01	128-09-33
BS 9	00-00-10	179-59-47	359-59-34	179-59-22	00-00-05
TC 10	128-09-24	128-09-40	128-09-27	128-09-39	128-09-28
	(128-09-32)				

VA 10-9	89-32-51	270-27-11	(89-32-50)	585.81 / 178.556
VA 10-11	89-40-16	270-14-50	(89-40-13)	549.79 / 167.575

30	29
31	32



FS 12	139-02-24	319-02-28	139-02-12	319-02-27
BS 10	00-00-11	180-00-11	00-00-03	180-00-05
T@ 11	139-02-13	139-02-17	139-02-08	132-02-22

139-02-15

FS 13	187-05-50	07-05-55	187-05-45	07-05-55
BS 11	00-00-10	180-00-15	00-00-07	180-00-23
T@ 12	187-05-40	187-05-40	187-05-38	187-05-32

187-05-38

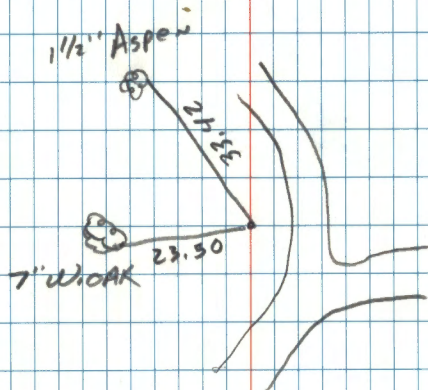
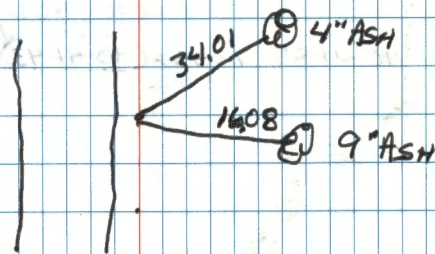
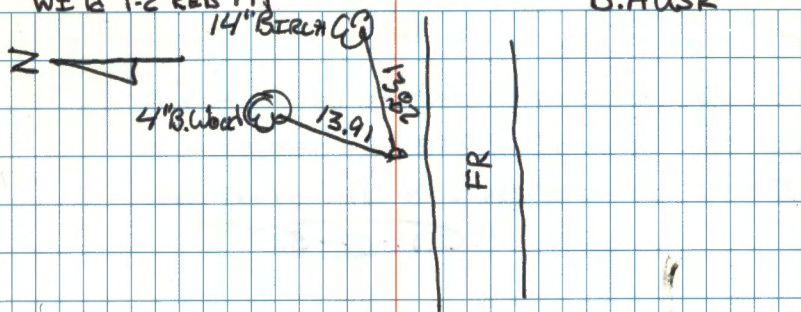
VA 2-11	89-24-40	270-35-30	89-24-35	470.22	143.329
VA 12-13	90-07-17	269-53-00	90-07-09	487.32	148.534

FS 14	122-38-48	302-38-58	122-38-52	302-39-00
BS 12	00-00-15	180-00-15	00-00-07	180-00-15
T@ 13	122-38-33	122-38-43	122-38-45	122-38-45

122-38-42

CLEAR 40'
3/24/92
WELD T-2 RED 1A

TR. MAIN
ROJANEN 6.
B. AUSK

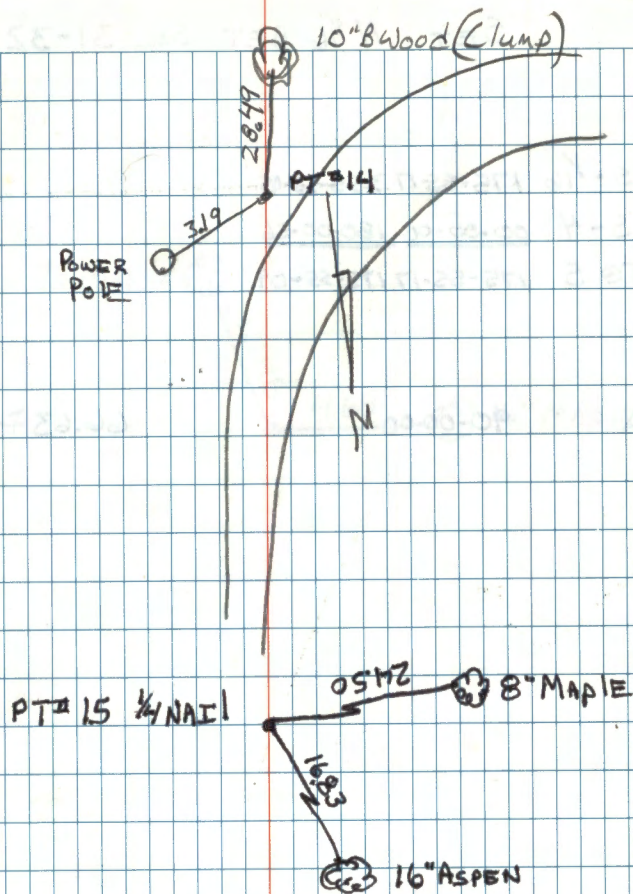


FS 15	239-03-07	59-03-08	239-03-04	59-03-12
BS 13	00-00-14	180-00-18	00-00-10	180-00-22
Te 14	239-02-53	239-02-50	239-02-54	239-02-50

239-02-52

VA 14-13 90-17-13 269-43-00 90-17-07 1061.61 ✓ 323.579

VA 14-15 90-41-53 269-25-15 90-41-43 816.25 ✓ 248.796
-18-26



SET N $\frac{1}{16}$ BET Sec 31-32

FS- $\frac{1}{16}$ 175-55-17 355-56-15

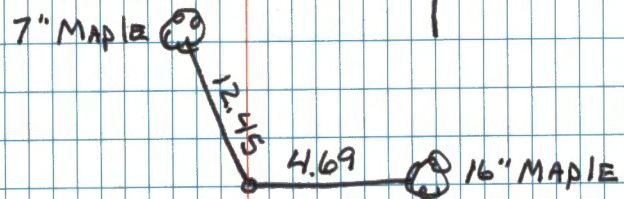
BS-4 00-00-00 180-00-56

TC 5 175-55-17 175-55-09

VA 90-00-00

66.63 FT

8.



FS A100 203-33-35 23-33-40 203-33-45 23-33-47

BS 12 00-00-17 180-00-24 00-00-19 180-00-23

TC 13 203-33-18 203-33-16 203-33-26 203-33-24

203-33-21

FS B101 129-55-45 209-55-53 129-55-45 309-55-53

BS 13 00-00-10 180-00-10 00-00-10 02180-00-10

TC A100 129-55-35 129-55-43 129-55-43 129-55-43

129-55-41

¹⁰⁰
VA A-13 89-04-15 270-56-20 89-03-58 1134.06 / 345.658

~~VA A-8~~ 70-01-45 269-59-10 70-01-18 2492.01 / 759.568
100701

FS 102 126-02-33 306-02-32 126-02-29 306-02-38

BS 100 A 00-00-17 180-00-15 00-00-08 180-00-22

TC 101 B 126-02-16 17 16 16

126-02-16

VA B-C 89-10-50 270-49-15 89-10-48 143.72 / 43.804
101-102

4/1/92

CLEAR 30° WELD T2 REDIA

ZITRMAZEN
BAUSK
DOJANEN

9.

PTA ON ICE ROUND LK

PTA ON ICE ROUND LK

25	30	PTC	ROD MONUMENT
36	31		

Slope HORIZ

FS 200 180-00-00
BS 15 00 00 00
Te 14 180-00-00

VD 14-200 91-18-44

538.70 538.5587

~~FS 201~~
~~BS 14~~
~~Te 200~~

12/2/92

T III R MAIN 10.
BAUSK

Partly Cloudy 25° W IKTZ RED 1A

PT 200 Spk ON LINE between N $\frac{1}{4}$ S 31 AND NE of S 31
PT 15 N $\frac{1}{4}$ S 31
TRAV PT IN POWER LINE

201 EAST $\frac{1}{16}$ POSITION AS DETERMINED BY ONE EM
BEARING TREE. POSITION OF THIS SPIKE
DETERMINED BY L.W. JOHNSON'S BEARING &
DISTANCE.

FS 201 EIM BT 344-24-05 164-24-05
BS 14 ~~BT~~ 00-00-00 180-00-15
TC 200 ~~BT~~ 344-24-05 344-23-56 (344-23-57)

VA 200-201 90° 38.70

FS 202 EIM BT 359-02-25 359-02-30
BS 14 ~~BT~~ 00-00-00 180-00-15
TC 200 ~~BT~~ 359-02-25 359-02-15 (359-02-20)

VA 200-202 90° 35.70

1/12/93

Cloudy SNOW 20°

KIRKMAN/J.
D. OSANEN

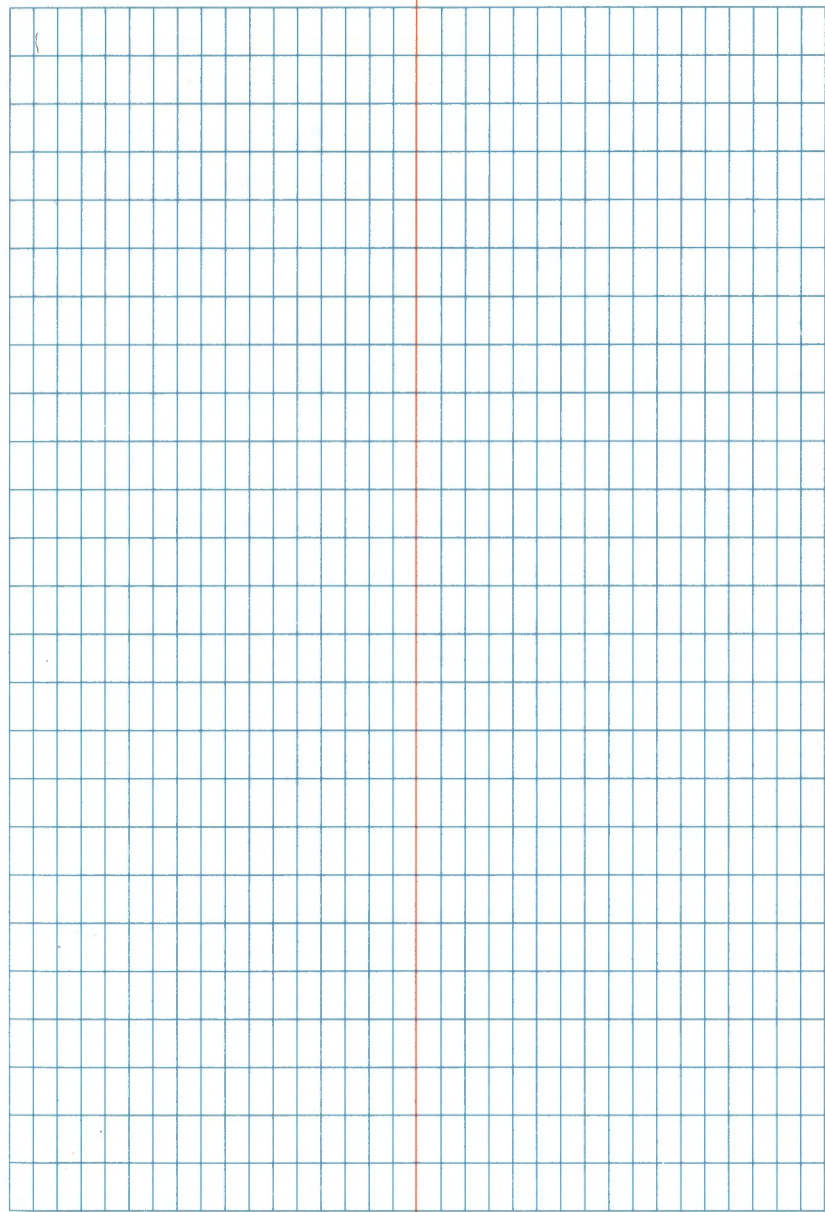
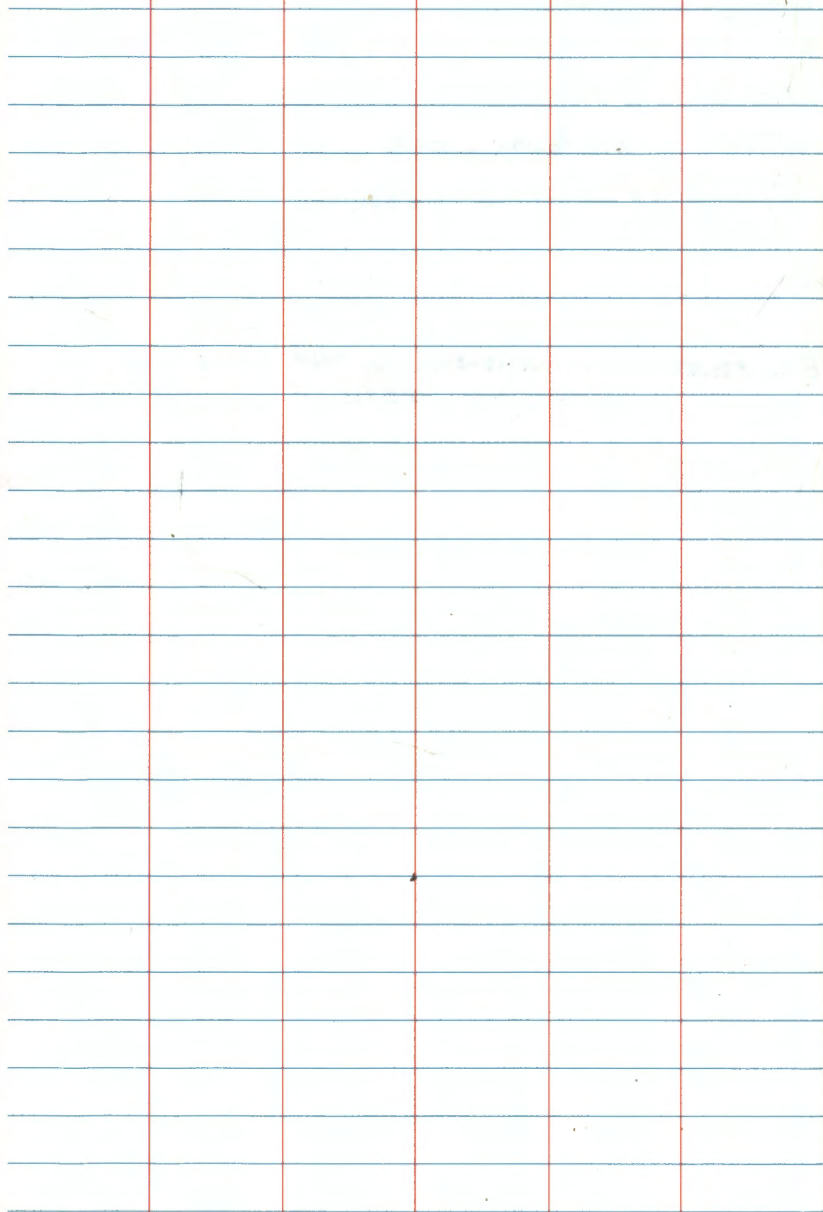
FS = EIM BT

TRAV AT IN POWER LINE

• SPK

EIM BT POSITION DETERMINED BY OUR EIM BT

• SPK



1-29-07 RMAIN TII
cloudy +10°

13.

FS 3 175-56-45 355-55-56 175-56-07 355-55-30

BS 1 00-00-00 179-59-40 359-59-44 179-59-19

T@ 2 175-56-45 175-56-16 175-56-23 175-56-11

175-56-24

Z-1 289.515 J 88.244M

Z-3 178.89 J 54.525

FS 4 150-28-49 330-28-21 150-28-51 330-28-08

BS 2 00-00-00 179-59-20 359-59-58 179-59-15

T@ 3 150-28-49 150-28-52 150-28-53 150-28-53

150-28-52

3-4 194.74 J 59.357M

~~FS 5 200-53-00 200-53-03 200-52-59 200-52-38~~

~~BS 3 00-00-00 179-59-28 359-59-56 179-59-25~~

~~T@ 4 200-53-00 200-54-05 200-53-03 200-53-13~~

200-53-05

4-5 389.415 J 118.693M

1/4 sec 10/15 U.S.F.S. monument
Bearing from 2 to 1 N78W

FS 6 186-01-42 6-01-18 186-01-39 6-01-10

BS 4 00-00-00 179-59-27 00-00-01 179-59-26

K25 186-01-42 186-01-51 186-01-38 186-01-44

186-01-44

5-6 267.825 ✓ 81.633M

FS 7 165-33-49 345-33-33 165-34-05 345-33-34

B55 00-00-00 179-59-36 00-00-05 179-59-32

K26 165-33-49 165-33-57 165-34-00 165-34-02

165-33-57

6-7 162.36 ✓ 49.488M

F55/00 2-09-52 182-09-27

B56 00-00-00 179-59-37

K27 2-09-52 2-09-50

2-09-51

7-100 152.18 ✓ 46.384M

FS 8 189-0807 09-07-31 189-0806 09-07-32

BS 6 00-00-00 179-59-44 00-00-12 179-59-38

K 27 189-0807 189-07-47 189-07-54 189-07-54

189-07-56

7-8 781.585 ✓ 238.227M

FS 9 177-35-15 357-34-40 177-35-15 357-34-43

BS 7 00-00-00 179-59-25 00-00-09 179-59-26

K 28 177-35-15 177-35-15 177-35-14 177-35-17

177-35-15

8-9 355.65 ✓ 108.402M

FS 10 247-15-45 67-15-21 247-15-51 67-15-13

BS 8 00-00-00 179-59-25 00-00-00 179-59-26

K 29 247-15-45 247-15-56 247-15-51 247-15-47

247-15-50

9-10 75.725 ✓ 23.081M

pt 10 is SE corner of section 10
Corner falls in road.

77

FS 11 296-29-23 116-28-55 296-29-18 ~~116-28-53~~
 BS 9 00-00-02 179-59-36 00-00-00 180-01-58
 T@ 10 296-29-21 296-29-19 296-29-18 296-29-19
 296-29-19

PT m.
 10-11 394.415/120-218

FS 12 179-59-57 359-59-27 179-59-53 359-59-30
 BS 10 00-00-00 179-59 29 00-00-03 179 59-30
 T@ 11 179-59-37 179-59-58 179-59-50 180-00-00
 179-59-56

11-12 553.02 √ 1168.056

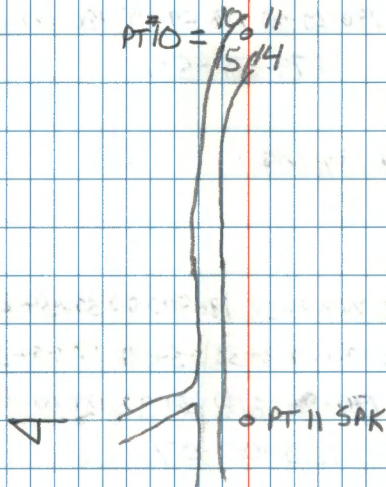
FS 13 179-55-33 ¹¹⁶ 359-54-49 ^{114 06} 179-55-06 359-54-36
 BS 11 00-00-00 179-59-06 359-59-31 179 59 01
 T@ 12 179-55-33 179-55-43 179-55-35 179-55-35
 179-55-37

12-13 366.325/11.656

1-31-07
 PC 150

16.

PT10 = 10 11
 15 14



PT12 SPK

FS 14 179-59-56 359-59-25 179 59 52 359 59 29
BS 12 00-00-00 179-59-25 359-59-55 179 59 29
T@ 13 179-59-56 180-00-00 179-59-57 180-00-00
179-59-58

13-14 613.0875 ✓ 187.109

FS 15 179-59-55 359-59-28 ^{179 6} 180-00-00 359-59-29
BS 13 00-00-00 179 59 30 359-59-28 179-59-26
T@ 14 179-59-55 179-59-58 180-00-32 180-00-03
180-00-07

14-15 296.075 ✓ 90.243M

FS 16 180-00-25 ³⁵⁹⁻⁵⁹⁻⁵¹ ~~180-00-19~~ 180-00-28 359-59-53
BS 14 00-00-00 179-59-32 00-00-02 179-59 40
T@ 15 180-00-25 180-00-19 180-00-26 180-00-13
180-00-21

15-16 229.245 ✓ 69.874

2-1-07
Cloudy 50

17.

Pt 13 ○ APPROX $\frac{1}{16}$ $\frac{10}{15}$

14 ○ SPK

15 ○ SPK

FS 1 180-29-01 00-28-37 180-29-08 00-28-33
BS 15 00-00-00 179-59-32 00-00-00 179-59-28
T@ 16 180-29-01 180-29-05 180-29-08 180-29-05
180-29-05

16-1 174.61√53.221M

FS 2 10-14-19 190-13-34 ¹⁰⁻¹³⁻⁴⁸ 359- 190-13-12
BS 16 00-00-00 ¹⁷⁹⁻⁵⁹⁻⁰³ 190- 359-59-31 179-58-49
T@ 1 10-14-19 10-14-31 10-14-17 10-14-23
10-14-23

17-2 289.505√88.24

16 = SPK

AT1 = $\frac{1}{4} \frac{10}{15}$

END OF
BOOK 3