

CORNER
RESTORATION
T148N R 27W



MINING
TRANSIT BOOK

No. 384F

Book 1

T148N R 27W S1/4 E1/4

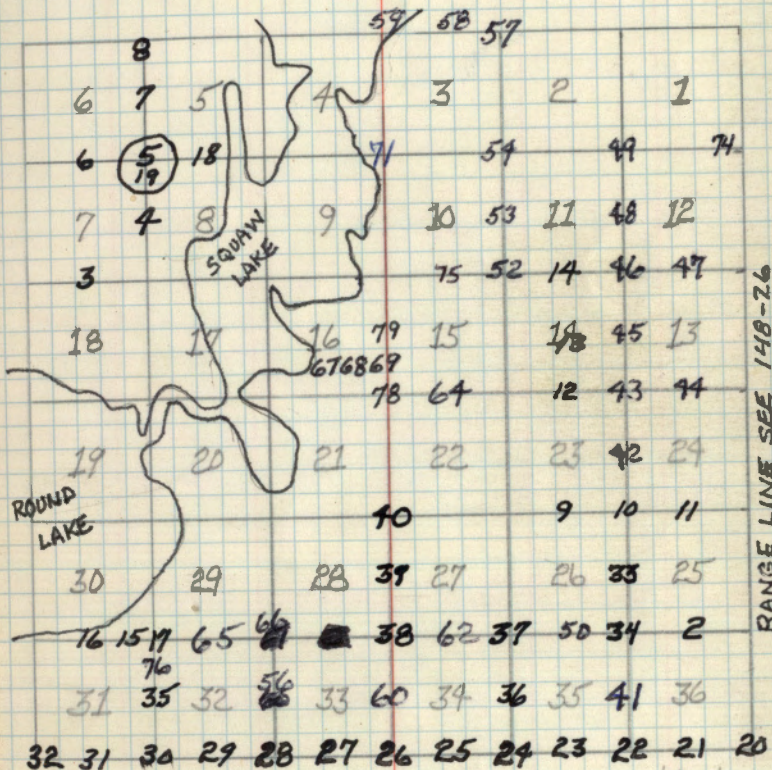
USFS

FULL BOOK

T148N R27W

5th P.M.

BOOK #1



Colored Numbers refer to page on which
Notes for that corner may be found.
Orig. Survey by B.C. Baldwin in 1875

1

2 V-23

Quarter Corner Sections 25-36
Notes of the original Govt. Survey of
1875

N. Pine 14" N51°W 132 1/2 (87.12') (Now a
27" Red pine N51°W 87.12 Ft. scribed 1/4 S B.T.)

N. Pine 12" N2°E 201 1/2 (132.66') (Now a 18"
pine stump w/ scribe burned off N1°W 132.7')
point for corner falls in logging road.

Set a 6" ϕ , 24" long cylindrical concrete mon.
w/ brass cap stamped:

T148N R27W

1/4 S25

7/4 S36

1966

RLS NO 6807

Note
Monument is set
4" below road surface.

Red pine 14" N41°W 69.8' MKD 1/4 S25 BT

Red pine 15" S4°E 23.6' MKD 1/4 S36 BT

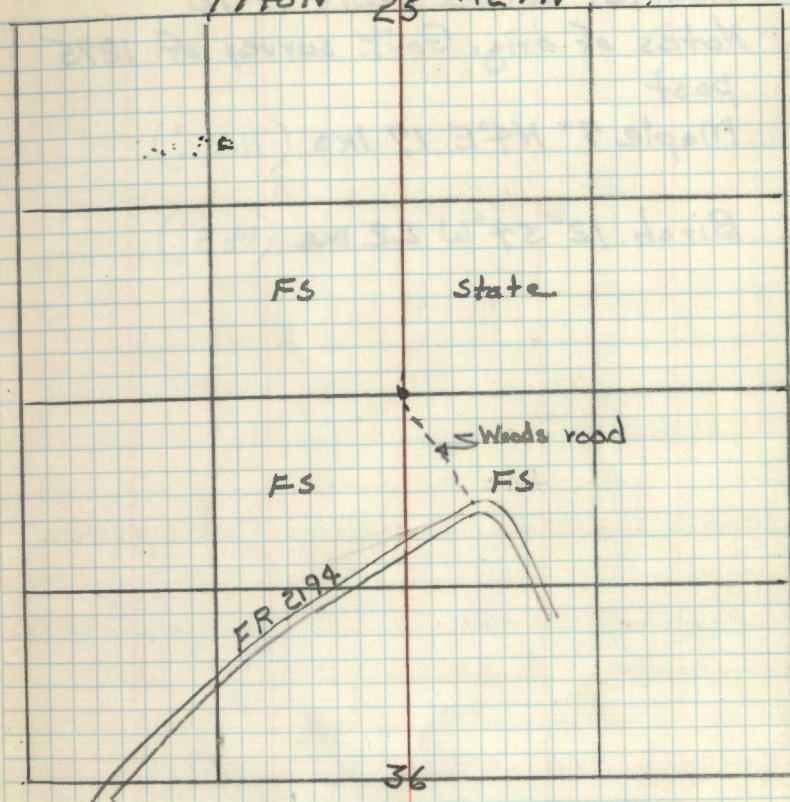
Cedar post 4" x 4" x 60" w/ signs 54-24 54-4
attached set North 21.8

5-12-66 G. McDonald

Accidavit RHM
12-10-66

R9-7150-4 RHM

T148N 25 R27W



3

Quarter Corner Sects 7-18

Notes of orig. Govt. survey of 1875

post

Maple $7^{\circ} N 4^{\circ} E$ 17 lks (11.22')

Birch $12^{\circ} 54^{\circ} W$ 22 lks (14.5')

4

Quarter Corner Sect's 7-8

Notes of orig. Govt. Survey of 1875
post

Tamarack 12" N69°W 26 lks. (17.2')

Tamarack 14" N77°E 24 lks (15.8')

CORNER FOUND BY W. OKERMAN - JUNE 1971
FD. OLD POST AND EVIDENCE OF BOTH GOV'T.
BT'S

TAM. STP. N69W 17.16' SCRIBE VISIBLE

TAM. STP. N77E 15.84' SCRIBE VISIBLE

OTHER TIES ON CARD NOV. 14 1979

COUNTY MONUMENT (RE-STAMPED)

CEDAR 10 S61E 36.88'

CEDAR 9 S45W 20.24'

SPRUCE 7 N43W 10.91

5

Corner Sections 5-6-7-8

Notes of original Govt. Survey of 1875
post -

Birch 18" S34°W 40 lks. (26.4')

Birch 9" N55°W 28 lks. (18.5')

Linden 9" N13°E 15 lks. (9.9')

Birch 16" S71°E 29 lks. (19.1')

See T146N R27W BK 1, pp 19

2002 ITASKA COUNTY
SET MONUMENT

6

Quarter Corner Sec's 6-7

Notes of orig. Govt. Survey of 1875
Post

Birch 8" N3°E 4 1ks (2.6')

Birch 8" S14°E 7 1ks (4.6')

Notes of Itasca Co. survey of the Tuomi
road in 1916

Birch 12" N12°20'W 42.0'

Balsam 12" S27°E 46.2'

- 2002 ITASCA COUNTY
SET MONUMENT

7

Quarter Corner Sec's 5-6

Notes of orig. Govt. survey of 1875
post

W. Pine 30° S 87° W 30 lks. (19.8')

W. Pine 30° S 58° E 40 lks. (26.4')

7 8

Q Closing Corner Sec's 5-6 ON 12th St. Par.
Notes of orig. Govt. Survey of
1875

post

Tamarack 12" S59°W 5 lks. (3.3')

Spruce 14" S14°E 10 lks. (6.6')

9 R-19

Quarter Corner Sections 23-26

From Co. road survey of Max & Sand Lake
road in 1931 - Platon record in Courthouse

N. Pine 10° N 48° W 70.5'

J. Pine 10° N 51° E 58.3'

CERTIFICATE FILED

Corner Sections 23-24-25-26

Notes of Itasca Co. Survey of Max & Sand Lake roads in 1931 - on record Itasca Co. Courthouse.

Gov't. J. Pine 7" S20°W 24.4' (Now stump hole S22°W 24.4')

Gov't. Poplar 14" N60°E 19.8'

Gov't. Poplar 14" S42°E 20.5'

Oak 7" ^{M 99°}S15½°E 35.8' (Now a 14" Oak ^{True}S8°E 35.8' with scribing visible)

Birch 12" N49°W 37.0'

J. Pine 15" S46°W 52.1' (Now a Jack Pine wind fall S56°W 52.1' with scribe visible.)
Set a 6" ϕ , 5' long cylindrical concrete monument with a 3" ϕ brass cap stamped

T148NR27W

S23|S24

S26|S25

1969

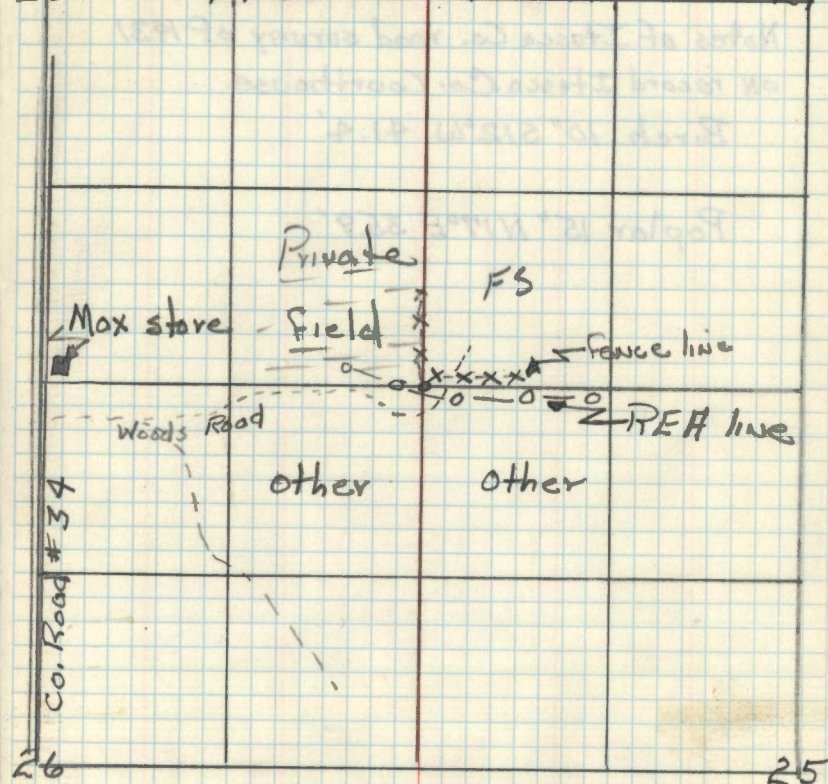
RLS NO 6807

Steel sign post 72" long w/ F.S. standard signs 54-2 & 54-4 attached set East 3.3'

Oak 12" S68°W 53.4' MKD S26BT

Oak 15" N69°E 72.5' MKD S24BT

December 2, 1969 R.H. McDonald



//

Quarter Corner Sections 24-25
Notes of Itasca Co. road survey of 1931
on record Itasca Co. Courthouse.

Birch $10''$ S 12° W 41.4'

Poplar $15''$ N 17° E 35.9'

CERTIFICATE FILED

12 N-19 See page 51

Quarter Corner Sections 14-23

Notes of Itasca Co. road Survey in 1931

on record Itasca Co. Courthouse.

T. Pine 7" N59°20'W 50.6'

T. Pine 14" S46°35'E 103.0' (Now a stump
with scribing visible)

CERTIFICATE FILED

Center Quarter Section 14

From Notes of Itasca Co. road survey of
~~1914~~ 1914. On record in Itasca Co. Courthouse.

Popple 12" N44°50'W 40.7'

Popple 14" N52°50'E 41.0'

Popple 12" S50°E 40.3'

Birch 8" S55°05'W 92.3'

14 J-19

Quarter Corner Sections 11-14
Notes of Itasca Co. road survey of
1914. ON record in Co. Courthouse.

Tam. 6" N58°10'W 80.9'

Fd. stp - well rotted

Tam. 8" S45°45'E 52.8'

Fd. Dead Tam. 6" Snag S46E-53.2' scribed T148N R27W S14 BT

Notes of orig. Govt Survey of 1875

Tam. 4" S18°E 10 lks.

Fd. stp.

Tam. 5" N14°W 20 lks.

Fd. stp.

CERTIFICATE FILED

Fd. 2" x 4" x 48" Tam. post w/ scribe visible
Fd. evidence of NW Co. BT well rotted stump
Put FSL Pon 8" Tam. N65E - 11.0

5-15-73 CRK

3-14-77 C. KRAUSE + R. OLESON
IN PLACE OF TAM. POST - SET 2" DIA. X 5' LONG
GALVANIZED STEEL PIPE WITH BRASS CAP MARKED

DROVE SIGN POST DOWN
ALONGSIDE OF 2" IRON

T148N R27W

1/4 S11
1/4 S14

1977

RLS NO

WITNESSED BY

TAM. 8 N41W 24.2' MKD. 1/4 S11 BT

TAM. 7 N56E 17.7' " 1/4 S11 BT

BLK. SPRUCE 4 S32E 10.4' " 1/4 S14 BT

TAM. 7 S40W 28.15' " 1/4 S14 BT

8' STEEL SIGN POSTS EAST 9.4' + WEST 3.7'
CORNER IS 580' WEST OF MAX ROAD
IN TAM. + SPRUCE SWAMP

15

East $\frac{1}{16}$ Corner Sec's. 30-31

L.W. Johnson Notes of Itasca Co. Rd Survey of 1928

Elm 6" S11°W 10.1'

Elm 6" N49°W 72'

5/3/90 R. MAIN D. OJANEN

SEARCHED 4 MAN HOURS Fd NO EVIDENCE
AT THIS TIME. FOLLOW UP WITH OUR TRAVERSE.

12/2/92 R. MAIN B. AUSK

FOUND Elm BT IN SOUTHWEST QUADRANT.
CUT INTO TREE AND FOUND SCRIBE. PLACED
SPIKE AT BEARING AND DISTANCE AS
DETERMINED BY L.W. JOHNSON ITASCA CO RD SURVEY
IN 1928

2/5/93 Traverse computations from the NE cor.
to the N¹⁴ show that a dist.-dist. intersection
from the fl. Elm BT (10.1') and the NE sec. cor.
(1320.15') is within 0.65' of the theoretical
on line split for this position. As the
spike set by Main on 6/2/92 (using a compass)
is 1.2' from this position it should not
(the spike) be used for the corner.

Wick Hoyle

Quarter Corner Sections 30-31

Notes of Co. road survey of 1928 L.W. Johnson

B. Wood 17" S32°W 57.0 ft.

Aspen 10" N12°W 53.0 ft.

NOTE: SURVEY RECORD SAYS 1/4 GOUT SEC 30.

Nov 1875 ORIGINAL GOUT SURVEY R.C. BALDWIN

SET wood post from which

Maple 8 N28W 3 lks 1.98

Aspen 14 S14E 42 lks 27.72

May 1918 ITASCA COUNTY ROUND LAKE ROAD SURVEY

SURVEY SHOWS MONUMENT IN PLACE.

DOESNT INDICATE TYPE OF MONUMENT OR
IF ORIGINAL OR NOT.

WITNESSED By.

BASSWOOD 17" S32°W 57.0 Ft

ASPEN 10" N12°W 53.0 Ft

About 1915. Form From MINNESOTA NATL
FOREST By GEORGE FARLEY FOREST RANGER.
CORNER IS NEW 5" STAKE.

WITNESSES

MAPLE STUB 10" W 3 feet

Aspen STUB 16" S12E 35 FEET

2-12-27 LUNDBILL Ed THIS INFORMATION ON
SAME FORM GEORGE FARLEY USED 1915.

2X3" Temp STAKE 2 1/2' high

8" ASPEN N11E 66"

16" BASSWOOD S33W 61"

I WOULD ASSUME THESE ARE THE COUNTY TIES W/
THE ASPEN BEARING AND BOTH DISTANCES IN ERROR.MAY 24 1982 CERT OF SURVEY By Gordon L. CHRISTENSON
R.L.S. No 9293SET POLE NAIL 0.36 FT EAST OF FOUND HUB WITH TACK &
PLACED THE 1/4 CORNER ON A LINE BETWEEN THE SE SEC COR.
AND THE FOUND HUB ON A DOUBLED OVER DISTANCE
OBTAINED BY DRIPPING A LINE FROM HUB #7. USED THE
S1/6 29 & 30 FOR LINE ONLY FROM THE SE SEC COR.Ed County Basswood (1918 & 1928) 24" Hollow but Standing
S38W 57.5 ft to 2 of trees.

PP		N80E	39.63
WOAK	12"	S48E	66.72
ASPEN	13"	N44W	16.41

CONTINUED Pg #77

17 ~~4~~-5

Section Corner 29-30-31-32

Notes of Itasca Co. road survey of
1928 - on record in Co. Courthouse

✓ Birch 32° S11°E 47.5' (Now a partly decayed

Now 6' stump S2½°E 47.5 ft.)

decayed stump
hole N3°W
67.3 ✓ Birch 24° N39°W 67.3 (Now a 8" Birch

N29°W 65.5 ft. scribe visible.)

✓ Birch 18° N36½°E 39.0' - Now decayed
stump N46°E 39.0 feet✓ Elm 9° S31°W 46.0' (Now a 16" Elm S38°W
46.0 ft. scribe overgrown.)Notes of orig. Gov't survey of
1875

Maple 8" N. 17°E. 7 lks. 4.62'

Now stump hole N17°E 4.6'

✓ Birch 12" S. 35°E. 9 lks. 5.94'

(Now partly decayed stump S35°E 5.9 ft.)

Basswood 7" N. 68°W. 84 lks. 22.44'

Now decayed stump N68°W 22.4'

Birch 14" S. 41°W. 29 lks. 19.14'

(Now birch stump S41°W 19.1 ft.)

Found a 14" Oak with scribe visible S39°E
49.9 ft. MKD S32 BT. tree dead(Found an old squared scribed post marking
corner.)Affidavit RHM T148N R27W R9-5100-4
RHMI set a 2" ϕ , 5' long galvanized steel
pipe filled w/ concrete and capped
w/ a 3" ϕ bronze tablet stamped

T148N R27W

S30 S32

S31 S32

1966
RHS No. 6807

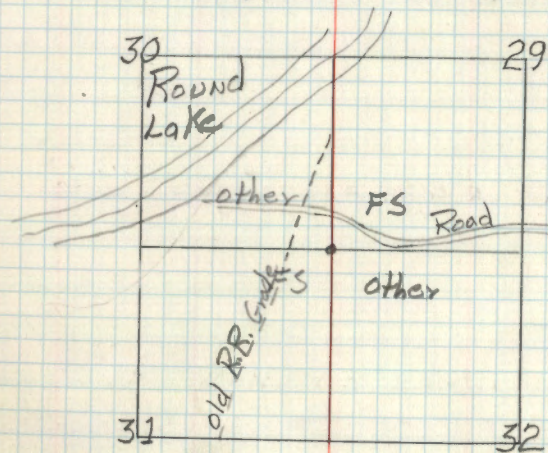
Oak 5" S64°E 4.95' MKD S32 BT

Steel sign post w/ FS. standard signs

54-2 & 54-4 attached set North 5.55 ft.

Oak 5" S26°W 4.75 feet MKD S31 BT

12-5-66 Giff. M. Donald

RHM
(with exceptions)
11/17/70

(CONT Pg # 73)

18

Quarter Corner Sections 5-8

Notes of Itasca Co survey of the
Tuomi road in 1916

Balsam $7^{\circ} N 33^{\circ} E 31.2'$

Birch $14^{\circ} S 61^{\circ} E 33.3'$

2002 ITASCA COUNTY
SET MONUMENT.

Corner of Sections 5-6-7-8
Notes of Itasca Co. survey of the
Tuomi road in 1916.

Birch 14" N59°E 48.0'

Birch 18" N27 $\frac{1}{4}$ °W 36.9'

Birch 12" S52 $\frac{1}{2}$ °W 40.0'

Balsam 12" S27°E 40.0'

See T148N R27W, BK1, pp 5

Township Cor. T147-148N R26-27W

GLO resurvey of 1936

7" ϕ concrete cylinder w/ brass cap stamped

T148N
R27W R26W

536 | 531

51 | 56

T147W

1936

Found orig.

Fallen Nor. Pine 30° N15°E 32 lks.

Fallen Nor. Pine 28° S41°E 27 lks.

Fallen Nor. Pine S35°W 13 lks.

Fallen Nor. Pine 30° N49°W 39 lks.

New BTs

Jack pine 8° N51 $\frac{3}{4}$ °E 44 lks.

Jack pine 7° S43°E 43 lks.

White pine 5° S54 $\frac{1}{2}$ °W 29 lks.

Jack pine 7° N68°W 37 lks.

Quarter Corner Sec's. 36-1'

G.L.D. resurvey of 1936

Iron post 2" ϕ , 3' long with brass cap
stamped:

$$\frac{1}{4} \frac{536}{51}$$

1936

Tamarack 6" N52 $\frac{1}{4}$ °E 145 lks.

Jack pine 12" S3°W 78 lks.

Corner Sections 35-36-1-2 T147-148N R27W

G.L.O. resurvey of 1936

6" dia., 24" long w/ brass cap stamped:

T148N R27W

535	536
-----	-----

52	51
----	----

T147N

1936

Orig.

Tamarack 4" S33°W 27 Iks.

New:

Tamarack 4" N18½°E 43 Iks.

Tamarack 8" S82¼°E 116 Iks.

Tamarack 4" S41¾°W 40 Iks.

Tamarack 4" N65¼°W 34 Iks.

Quarter Corner Sections 35-2

GLO resurvey of 1936

Iron post 2" ϕ , 3' long w/ brass cap

stamped: $\frac{1}{4}$ S35

MON. set in West ditch of Max road. S²

White pine 16" N20 $\frac{1}{4}$ °E 173 lks.

Jack pine 8" S55 $\frac{1}{4}$ °W 51 lks.

INFO IN BOOK #1 T147N R27W Pg #10

24 Z-17

Corner Sections 34-35-2-3

G.L.O. resurvey of 1936

Cylindrical concrete mon. w/ brass cap

stamped:-

Found in place

T148N R27W

S34 | S35

S3 | S2

T147N

1936

Orig.

Tack pine 6" N30°E 13 lks.

Stump hole S32°E 48 lks.

Norway Pine 14" S36°W 36 lks. (Now a 20" Red pine S36°W 23.7' Scribe visible)

Tack pine 10" N37½°W 35 lks. (Now s.p. w/ scribe "BT" N37½°W 23.1')

New

Norway pine 14" N72½°E 40 lks. (Now a 19"

Red pine N72½°E 26.4' w/ scribe visible

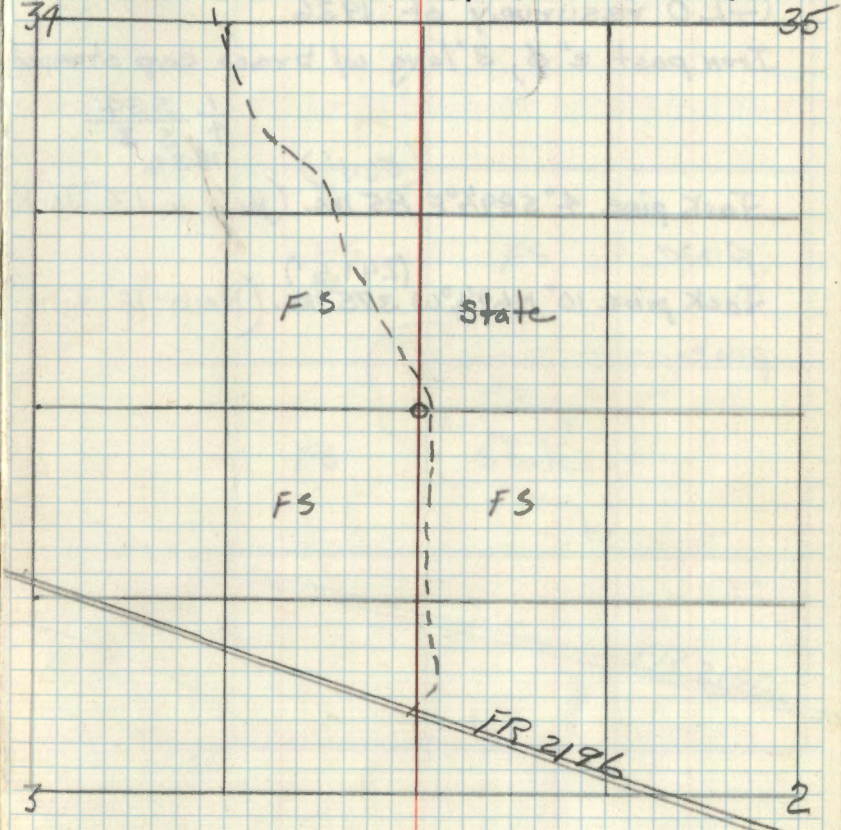
Norway pine 16" S13¾°E 57 lks. (Now a 20"

Red pine S13¾°E 37.6' w/ scribe visible

Norway pine 12" N16¾°W 45 lks. (Now a 17" Red pine N16¾°W 29.7' w/ scribe visible)

R9-7150
1-21-40 TAMM

Corner falls 22 lks west of an old road.



1936 GLO Resurvey conducted from June 22 to October 4, 1936 by Hal D. Craig, surveyor and Alfred Berger, Transitman. On pp 14 of the notes they state they find a 4in sq post painted white, 2 1/2 ft above ground, set by a local surveyor. Set mon in place of post. "The orig BST's do not conform to the calls of the field notes. The facing of the blocks indicate that the local stake is at the best possible determination of the true cor. position."

See pp 70 This Book

25 Z-15

Quarter Corner Sections 3-34

GLO resurvey of 1926

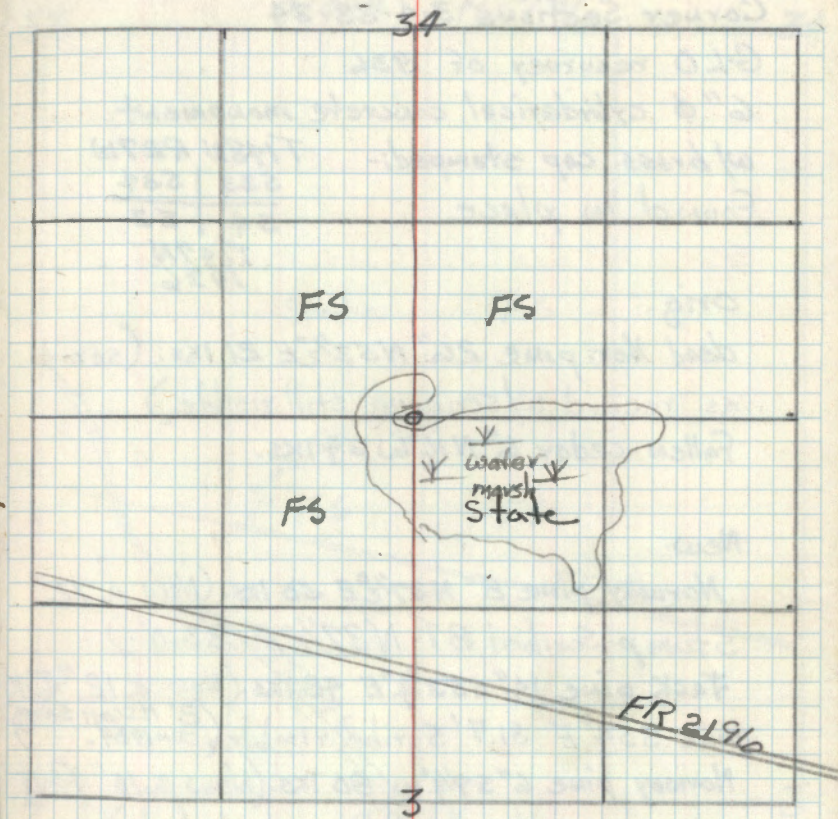
Iron post 2" ϕ , 3' long w/ brass cap stamped

$\frac{1}{4} \frac{534}{53}$
1936

Jack pine 4" S89 $\frac{1}{2}$ °E 85 lks. (Now a 13" Jack
pine

Jack pine 10" N69 $\frac{1}{4}$ °W 375 lks. (Now 18" Jack
pine

R9-5680-11
PHM



26 Z-13

Affidavit *RHM*

Corner Sections 3-4-33-34

GLO resurvey of 1936

6" ϕ cylindrical concrete monument
w/ brass cap stamped:- T148N R27W
Found in place

533	534
54	53
T147N	
1936	

Orig.

dead Nor. pine 26" N53 $\frac{1}{2}$ °E 21 Iks. (same
as record w/ scribing still visible.)
Fallen cedar 6" N16°W 34 Iks.

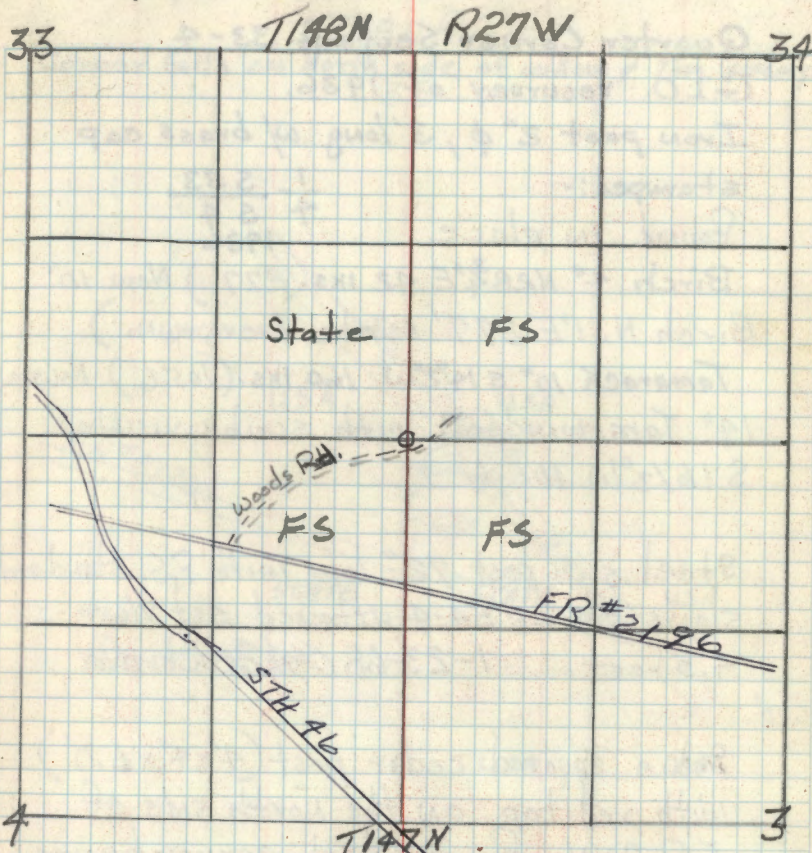
New.

Norway pine 8" N37 $\frac{1}{2}$ °E 50 Iks. (Now a 12"
stump scribed BT N37 $\frac{1}{2}$ °E 33.0')
Jack pine 14" S53 $\frac{3}{4}$ °E 48 Iks. (Now a 12" Jack
pine S54°E 31.7' scribe visible (8' HIGH SNAG)
IN 1989.)
Norway pine 6" S9 $\frac{1}{4}$ °W 80 Iks. (Now a 10" Red
pine stamp at record bearing & dist.)
Cedar 6" N34 $\frac{3}{4}$ °W 23 Iks (15.2') Now a.
8" cedar N34 $\frac{3}{4}$ °W 15.2' w/ scribe visible

Set a steel sign post 72" long w/ F.S.
standard signs 54-2 & 54-4 attached
North 3.0 Feet 11/24/69 *RHM* Donald

R9-7150-4
RHM

11-5



8/16/89 R. MAIN C. KRAUSE G. BRAMA
Fd THE GLO MONUMENT UP 2" ABOVE GROUND.
WITNESSED BY,

R PINE	20"	N 18°W	12.65	533 BT NAIL
R PINE	16"	S 72°W	48.91	54 BT NAIL
R PINE	17"	S 85°E	20.44	53 BT NAIL
R PINE	15"	N 35°E	35.08	534 BT NAIL

SIGN POST 3.27 NORTH 4.0 WEST
CORNER \pm 20' FROM CEDAR LOW AREA
CORNER CAP IN FILE. *RM*

27 Z-11

Quarter Corner Sections 33-4

G.L.O. resurvey of 1936.

Iron post 2" ϕ , 3' long w/ brass cap stamped:-

Found in place

$\frac{1}{4}$ $\frac{S33}{S4}$
1936

Birch 4° N28 $\frac{3}{4}$ °E 42 lks (27.7') Now 10"

Birch N31°E 27.7' scribe overgrown.

Tamarack 10° S14 $\frac{1}{2}$ °W 160 lks. (105.6') Now a
14" Tam. wind fall with scribe visible
S16 $\frac{1}{2}$ °W 105.6')

Steel sign post 72" long with F.S. standard
signs 54-2 & 54-4 attached set West
4.5 feet. 1-23-68 RHM McDonald

620

Set a squared cedar post (4"x4"x6.0')
with red top on the north side of
FR 2196 from which corner bears
North 620.0 feet 1-23-68 RHM
CEDAR POST IS GONE

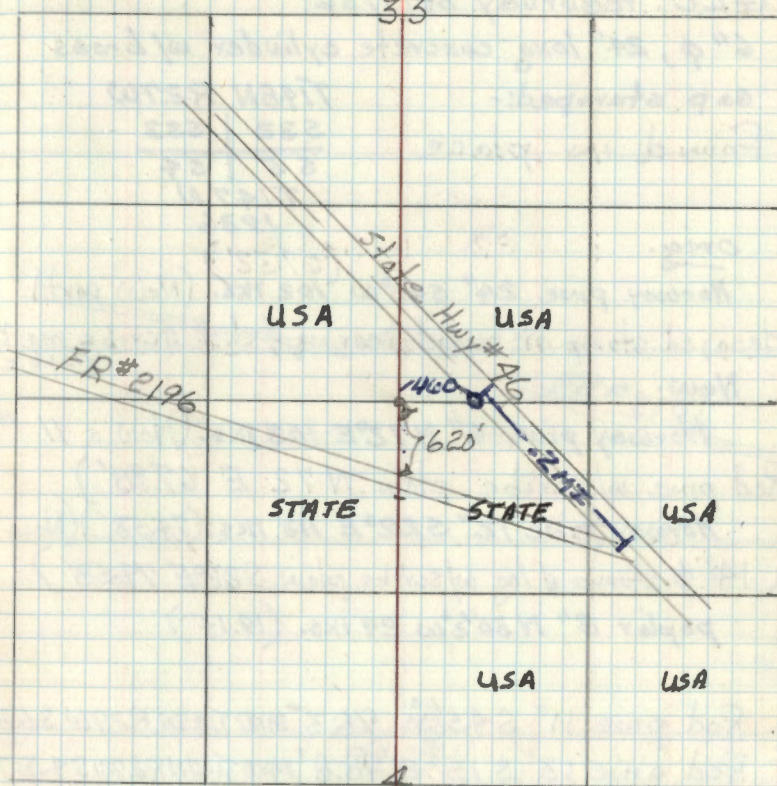
8/14/89 R. MAIN C. KANASE

Fd GLO MONUMENT IN GOOD CONDITION TWO INCHES
ABOVE GROUND ON THE NORTH EDGE OF A BEAVER
POND. A 12" DIAMETER BALSAM SNAG/W/ A STATE TAG
IS ON THE EAST EDGE OF THE IRON. THE BARK
BT IS NOW A 50' SNAG/W/ F.S.L.P. ATTACHED

R9-#150
RHM

T148N R27W

Corner falls on North side of willow & Tam. swamp



T147N

WITNESSED By

6' SIGN POST WEST 4.35'

8' SIGN POST EAST 4.65'

PLACED LOCATION POSTER ON A 10" R PINE FROM WHICH
CORNER BEARS WEST 460'. TREE ON WEST
SIDE OF HWY #46

2B Z-9

Corner Sections 4-5-32-33

G.L.O. resurvey of 1936

6" ϕ , 24" long concrete cylinder w/ brass

cap stamped:-

Found in place

T148N R27W

532 | 533

55 | 54

T147N

1936

orig.

Norway pine 24" S40°W 102 lks. (67.32')
 decayed stump at record bearing & dist. scribe marks visible

New:

Norway pine 6" N72°E 103 lks. (Now a 11"
 Red pine w/ scribe plain N72 E 67.95'
 Norway pine 12" S22°E 113 lks. (74.58') (Now
 a 14" ϕ stump & log w/ scribe plain S22°E 74.58'
 poplar 8" N30°2'W 29 lks. (19.14')

Asp

Red pine 11" S45½°W 78.3' MKD T147N R27W S5BT

Red pine 13" S15°E 78.8' MKD T147N R27W S4BT

Oak 7" N30°W 44.0ft MKD 532 BT

Govt. Pine N72°E is in good condition

Steel sign post 72" long w/ F.S. standard

signs 54-25, 54-4 attached set West 46ft

January 19, 1968 R.H.M. Donald

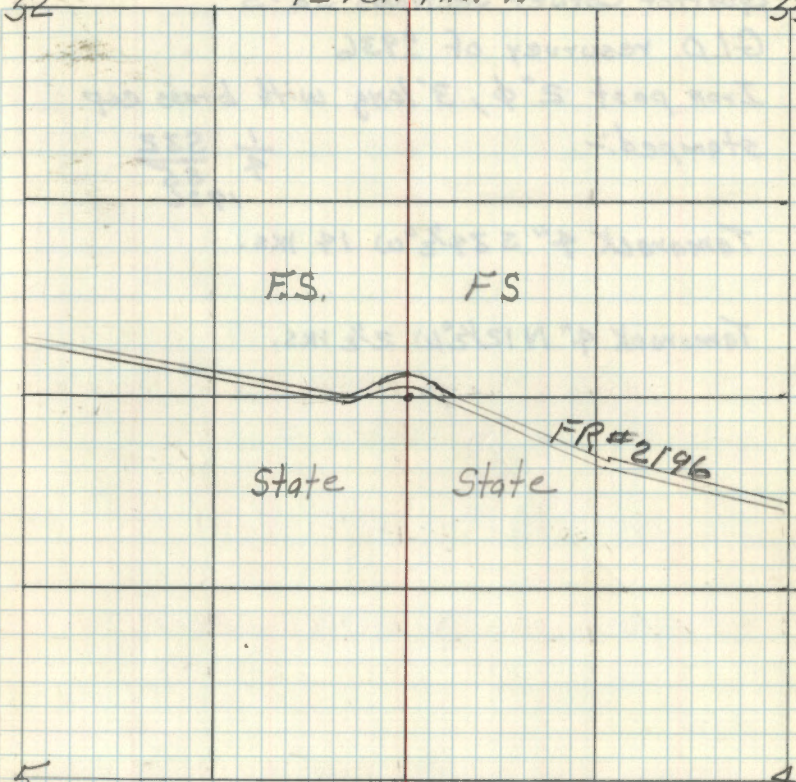
Affidavit RHM

R9 7150-4
 RHM

T148N R27W

32

33



5

T147N

4

Quarter Corner Sections 32-5

G.L.D. resurvey of 1936

Iron post 2" ϕ , 3' long with brass cap
stamped:-

$$\frac{1}{4} \frac{S32}{S5}$$

1936

Tamarack 4" S 34 $\frac{1}{2}$ ° W 14 Iks.

Tamarack 4" N 12 $\frac{1}{2}$ ° W 2 $\frac{1}{2}$ Iks.

30 Z-5

Corner Sections 5-6-31-32

G.L.O. resurvey of 1936

6" ϕ , 24" long cylindrical concrete monument
capped w/ a 3" dia brass cap stamped

Found in place

$$\begin{array}{r} T148NR27W \\ \hline 531 | 532 \\ \hline 56 | 55 \\ \hline T1436 \\ \hline T147N \end{array}$$

orig.

Norway pine 24" N28°E 156 lks. (102.96')

(Now 27" Red pine N28°E 102.96' scribe visible.)

Fallen Nor. pine 24" S68 $\frac{3}{4}$ °E 91 lks.Dead Norway pine 30° S9 $\frac{1}{2}$ °W 142 lks.Fallen Norway pine 16" N59 $\frac{1}{2}$ °W 88 lks.

New

Norway pine 6" S9 $\frac{3}{4}$ °E 69 lks. (45.54') Now

a 12" Red pine S11°E 45.5' scribe plain

Cedar 12" S49°W 90 lks. (59.4') Now a 13" Cedar
S43°W 59.4' scribe plain.)Nor. pine 14" N37 $\frac{1}{2}$ °W 168 lks. (110.88') Now a 20"

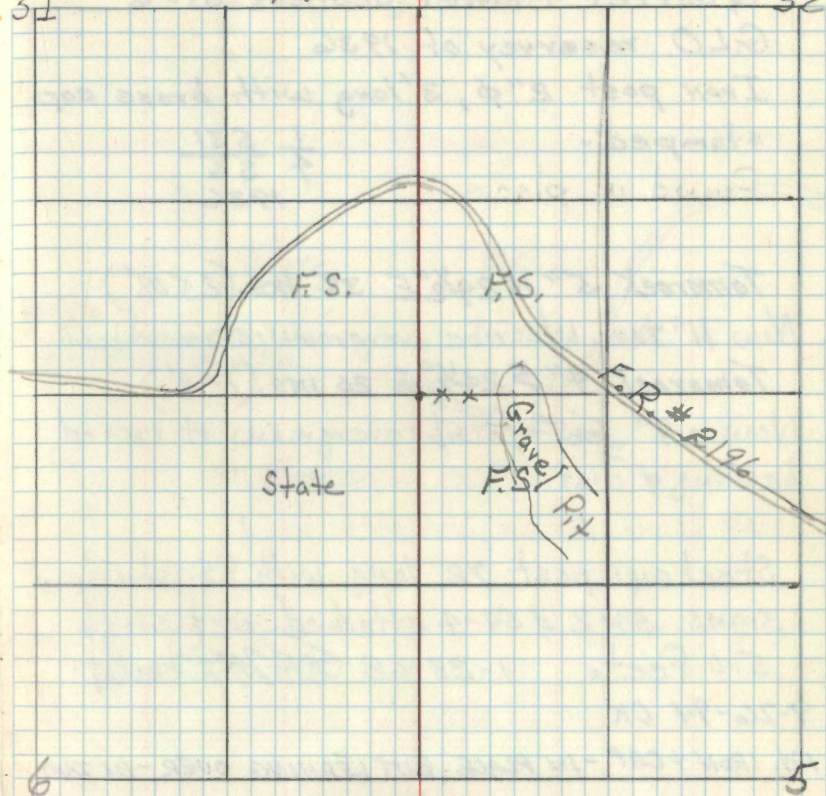
Red pine N37°W 110.88 scribe plain)

Jan 23, 1968 *RAM Donald*R9-7150-4
RAM

T148N R27W

31

32



6

5

T147N
a brushed line runs from the corner
East to Gravel pit

31 Z-3

Quarter Corner Sections 31-6
 G.L.O. resurvey of 1936
 Iron post 2" ϕ , 3' long with brass cap
 stamped:-
 Found in place

$$\frac{1}{4} \frac{S31}{S6}$$

1936

Tamarack 5" N 24 $\frac{1}{2}$ ° E 38 lks. (25.08') ^{of Dist.}
 Now 11" tam. w/ scribe overgrown - at record bearing
 Tamarack 4" S 24 $\frac{1}{2}$ ° E 20 lks. (13.2')
 Now a 9" tam. w/ scribe overgrown at record
 bearing & dist.

Steel sign post 72" long with F.S. standard
 signs 54-2 & 54-4 attached set south
 5.0 Feet. 1-23-68 J.H. McDonald

9-26-94 OK

Fd. IRON + CAP - IN PLACE, BUT LEANING OVER - IN TAM
 SWAMP - NOW VERY WET - STAND IRON UPRIGHT AND
 PLACE 6' SIGN POST AT NORTH SIDE - CAP IS 10" ABOVE SWAMP.
 MARKED NEW BTS.

TAM 6 S82W 27.91' MKD 1/4 S6 BT

TAM 12 N43W 29.95' " 1/4 S31 BT

8' STEEL SIGN POSTS SOUTH 3.1' + WEST 2.8'

GLO TAM. 11" S24E 13.2' TAGGED + PAINTED
NO-SCAR SHOWING

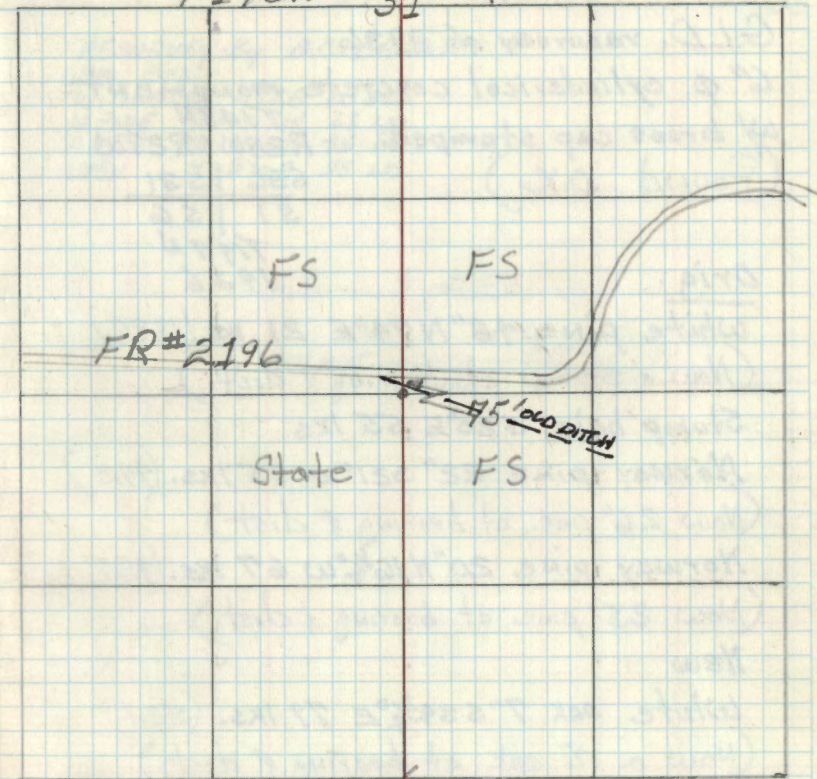
GLO TAM. STUB 12" N24E - 25.1'

OLD FSLP ON 16" TAM SOUTH SIDE OF FR 2196 CORNER
 IS 75' SOUTH OF TAG

Hffidavit AHM

R9 7150-4
AHOM

T148N 31 R27W

6
T147N

THERE IS AN OLD DRAINAGE DITCH WHICH RUN SE
 FROM SOUTH DITCH OF FR 2196 - THIS DITCH IS
 6' NORTH OF CORNER

32 Township 147-148 N R 27-28 W

2-1 Corner Sections 31-36-1-6

G.L.D. resurvey of 1936

6" ϕ cylindrical concrete monument

w/ brass cap stamped:
(Found O.K.)

T148N
R28W R27W
S36 | S31
S1 | S6
T147N
1936

Orig.

White pine 48" N74°E 21 lks. (13.86')

(Now a stump at bearing & dist)

Stump hole S20°E 55 lks

Norway pine 22" S21°W 75 lks. (49.5')

(Now 26" pine at bearing & dist)

Norway pine 20" N16 $\frac{1}{4}$ °W 67 lks. (42.2')

(Now 25" pine at bearing & dist.)

New

White oak 7" S39 $\frac{3}{4}$ °E 79 lks. (52.1')

(Now a 12" oak at bearing & dist.)

I placed bearing tree tags on these trees. 11-28-66 RHM Donald

9-20-94 CK Fd. GLD MONUMENT - IN PLACE

3" ABOVE GROUND - IN THICK BRUSH WITH OAK-ASPEN+PINE

ORIG
N. PINE 27" N16°W - 44.2' SCRIBE VISIBLE

ORIG.
N. PINE 31" S21°W - 49.5' " "

GLD
W. OAK 12" S35°E - 52.10' SCAR FACING CORNER

MARKED NEW BT

W. OAK 10" N86°E - 67.72' MKD S31 BT
CORNER IS 430' SOUTH OF FR 2196 - 4"X4" ON SOUTH SIDE

R9-7150-4
RHM

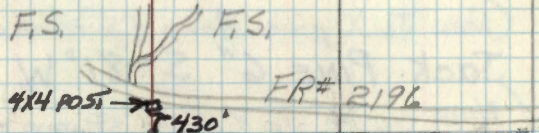
R28W R27W

T148N

36

31

RESURVEY By B.C. BALDWIN
ORIG. B.T.S.
W. PINE 24 N72E 20 LKS.
N. PINE 12 N17W 68 LKS.
N. PINE 18 S20W 75 LKS.
ASPEN 4 S20E 55 LKS.



F.S.

F.S.

state

S1

S6

T147N

NOTE: THERE IS A 6" W. OAK 2.5' N35W OF GLD 12" W. OAK
8' STEEL SIGN POST SOUTH 3.6'
ORIG. LARGE W. PINE STUMP N74E - 13.86' STILL FARLY SOLID

QUARTER CORNER Sections 25-26
Notes of orig. Gov't. survey of
1875

Post Found a squared wood post mostly
decayed at point for corner. 27.06'

Jack Pine 8" N. 84° E. 41 lks.

(Now Jack pine stump & windfall at ^{recovered bearings} 24.47' dist.

Jack Pine 6" S. 81° W. 37 lks.

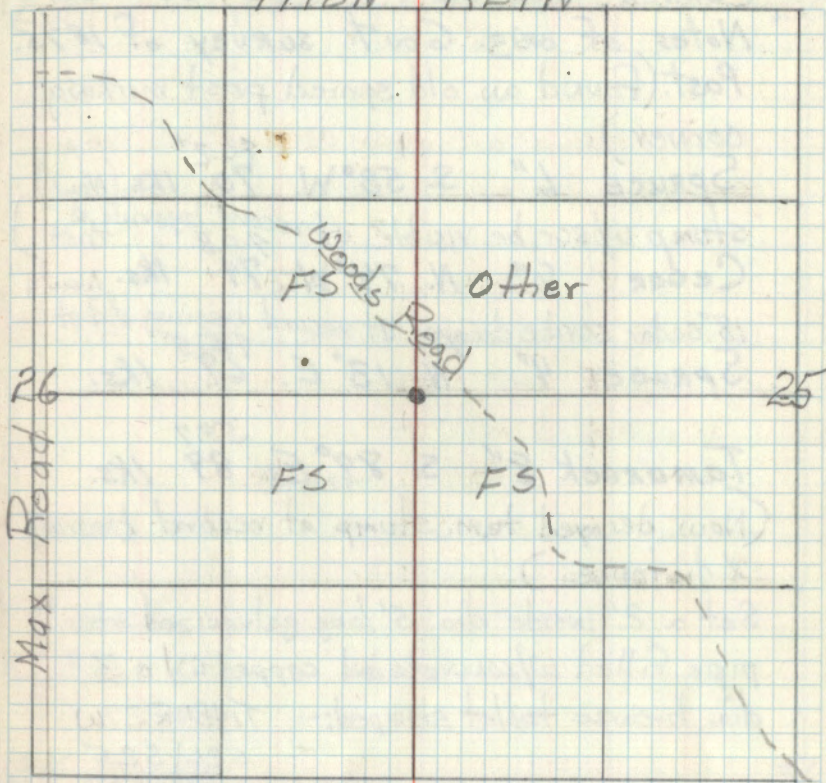
(Now a 14" Jack pine stump scribed "BT"
S 81° W 24.4 Feet.)

Set a 6" ϕ , 5 foot long cylindrical
concrete monument capped with a 3"
dia. bronze tablet stamped T148NR27W

$\frac{1}{4}$
S26 | S25
RLS 1966
NO 6807

Jack pine 7° N 36° W 41.45 feet MKD $\frac{1}{4}$ S26 BT
White pine 16" S 4° W 43.0 feet MKD $\frac{1}{4}$ S26 BT
Red pine 16" S 23° E 45.2 feet MKD $\frac{1}{4}$ S25 BT
Steel sign post 72" long w/ FS standard signs
54-2 & 54-4 attached set East 3.4 feet
11-4-66 GMM Donald

T148N R27W



Donald

34 V-21

CORNER Sections 25-26-35-36
Notes of orig. Gov't. survey of 1875.
Post. (Found an old squared post marking
corner)

Spruce 6" S. 58° W. ^{46.2'} 70 lks. (Now)
stump w/ scribe visible at record bearing & dist.

Cedar 8" N. 74° W. ^{49.8'} 74 lks. Now a
18" cedar scribe decayed at record bearing & dist.

Spruce 4" N. 13° E. ^{45.5'} 69 lks.

Tamarack 8" S. 89° E. ^{52.7'} 89 lks.

(Now decayed tam. stump at record bearing
& distance.)

Set a 2" inside dia. 5' long galvanized steel
pipe filled w/ concrete and capped w/ a 3"
dia. bronze tablet stamped:- T148NR27W

S26 | S25

S35 | S36

1966

RLS NO 6807

Spruce 12" N 4½° E 59.8 Ft. MKD S25 BT

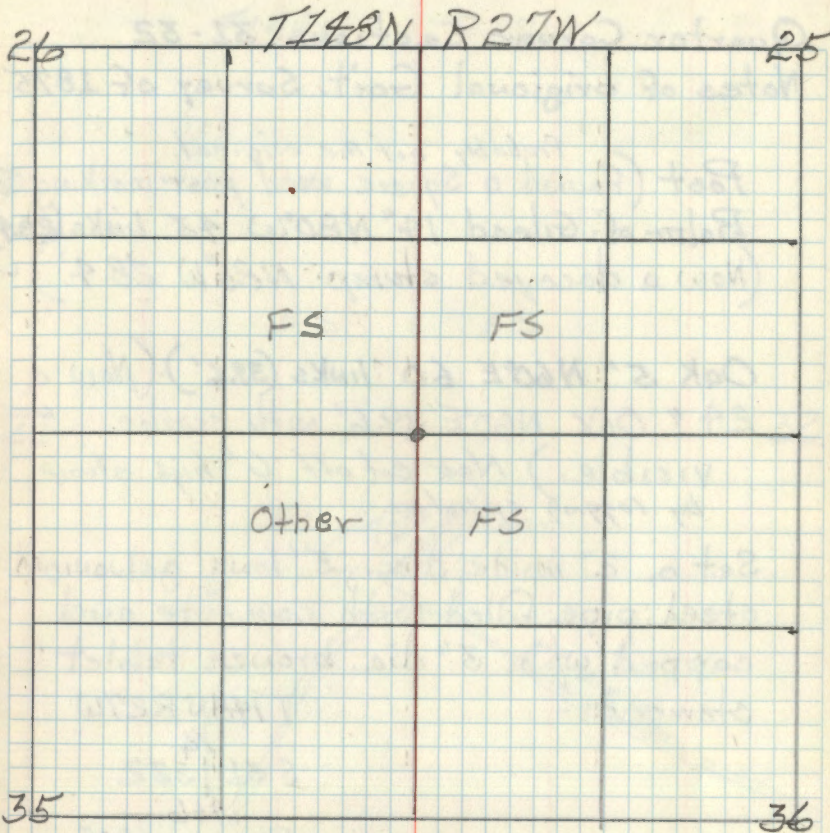
Ash 5" S 57° E 6.5 Feet MKD S36 BT

Cedar 13" S 64° W 44.85 Ft. MKD S35 BT

Cedar 8" N 33° W 47.6 Feet MKD S26 BT

Steel sign post 72" long w/ F.S. signs 54-2 &
54-7 attached set West 3.1'

Affidavit RHM R9-7150-4 RHM



Corner is on North edge of a Swamp
Blue line runs north from corner.

11-9-66 RHM McDonald

of Mills

35 X-5

Quarter Corner Sections 31-32
Notes of original Govt. Survey of 1875

Post (Probably not the original, Found a Square wood post marking cor.)
Balm-of-Gilead 14" N80°W 43 links (28.4')
(Now a decayed stump N80°W 28.4')

Oak 5" N60°E 60 links (39.6') (Now a
24" Oak N60°E 39.6' with scribe
visible.) Now cut off 6' high stump
by logging operation

Set a 2" inside dia., 5' long galvanized
steel pipe filled with concrete and
capped w/ a 3" dia. bronze tablet
stamped: -

T148N R27W

^{1/4}
S 31 | S 32

1966

RLS NO 6807

(This tree injured by logging)

Oak 10" N45°E 51.6 ft. MKD ^{1/4}S 32 BT

Oak 10" S37°W 15.7 ft. MKD ^{1/4}S 31 BT

Steel sign post 72" long with F.S. standard
signs 54-2 & 54-4 attached set East 3.6 ft.

Nov. 29, 1966 R.H. McDonald

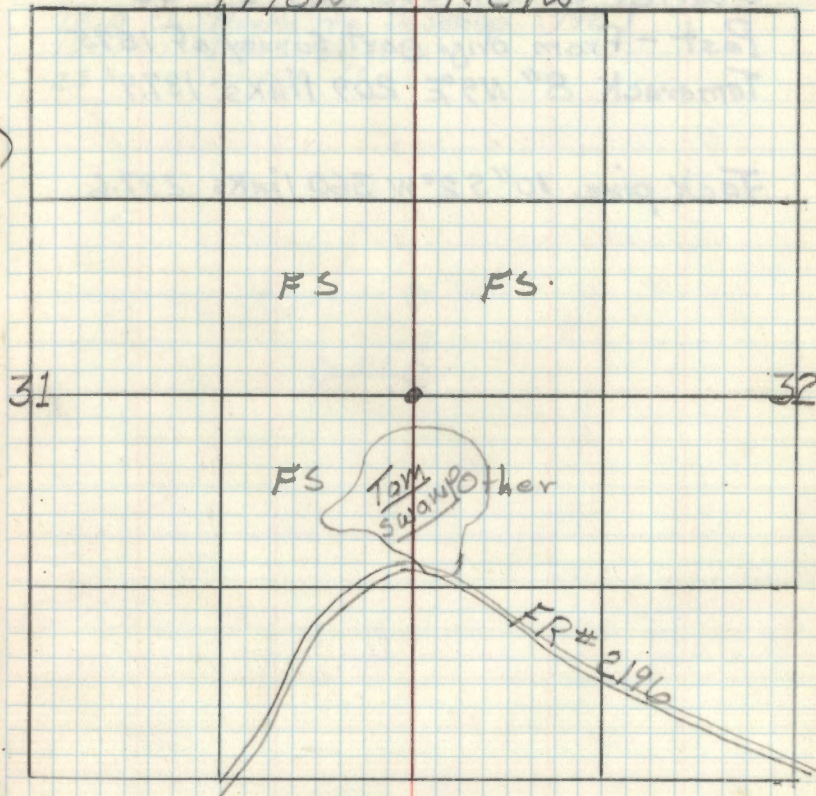
OK
11/17/70

Affidavit RHM

R9-7150-4
RHM

T148N

R27W



F.S. location poster is on a post on
North edge of Road from which corner
is North approx. 15 chains

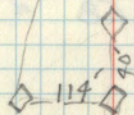
F.S.L.P. on 10" Tw. Aspen E. side of road
corner is East approx. 900 feet

Quarter Corner Sections 34-35

Post - From orig. govt. survey of 1875

Tamarack $8^{\circ} N 9^{\circ} E$ 209 links. 137.9'Jack pine $10^{\circ} S 2^{\circ} W$ 360 links 237.6

12.0 ch North to Swamp (792')
 18. " leave Swamp
 28 " Enter "



Corner Sections 26-27-34-35

Notes of orig. Gov't. Survey of 1875

Wood post

Spruce 4" S42°W 76 links 30.16

Aspen 4" N85°W 128 " 84.48

Spruce 4" N42°E 38 " 25.08

Tam. 4" S33°E 58 " 37.6'

500' E. leave Swamp

792' South leave Swamp

726' North " "

CORNER SECTIONS 27-28-33-34

Notes of original Gort. survey of 1875.

Wood post

Tamarack 3" N 1° E 79 links = 52.14'

Tamarack 6" N 5° W 92 links = 60.72'

Tamarack 4" N 65° W 85 links = 56.10'

Spruce stub 8" S 75° E 67 links = 44.22'

874 CCC NOTES BY NELSON 3-20-35

SET NEW POST

Fd. TAM 8 NORTH 55 LKS. = 36.30'

ON BACK SIDE OF ANOTHER 874 NO DATE OR NAME

Fd. DEAD TAM. 6 N 2 E 60' SCRIBED

SPRUCEDOWN S 70 E 50' SCRIBED

TAM. STUB 10 N 3 W 60'

TAM. STP. N 63 W 70' SCRIBED

Quarter Corner Sections 27-28

Notes of original Govt. Survey of 1875

Wood post

White pine 12" S25°W 90 lks.

White pine 14" S53°E 93 lks.

874 CCC NOTES BY ROY NELSON 3-21-35

Fd. POST - GOOD CONDITION - 30" HIGH - SCRIBED

Fd. ASPEN IS S85E 73 LKS. = 48.18' SCRIBED

PLACED FSLP ON CEDAR POST - TAG ON WEST

SIDE OF POST - CORNER BEARS EAST 4 LKS.

= 2.64 OR 14 LKS. = 9.24'

LOCATION POSTER ON 12" BALSAM 23 LKS. 15.18'

FROM WHICH CORNER BEARS NBOW

SURVEY BY R.F. SCHNEIDER RLS WALKER MN.

FROM HIS SURVEY OF SECTION 28 DEC. - 1978

Fd. IRON BOLT - SET SPK. AT BASE

CERTIFICATE FILED

Corner Sections 21-22-27-28

Notes of orig. Govt. Survey of 1875

Wood post

Norway Pine 20" N65°W 116 links = 76.56'

Norway Pine 20" S87°W 245 links = 161.70'

Norway Pine 18" N28°E 648 links = 427.68'

Norway Pine stub 16" S27°E 207 links = 136.62'

Statement of Evidence:R-13, Northeast corner
Township 148 North, Range

June 1875 B.C. Baldwin, Government Land Office (GLO) Deputy Surveyor accessories were noted:

N. Pine 20" N 65° W, 1.16 Chains (76.6 feet) N.

N. Pine 18" N 28° E, 6.48 Chains (427.7 feet) N.

Said records are on file with the Secretary of State, notes are on file in the Itasca County Department of Surveyors' Office.

1914 J.S. Siverts, Itasca County Surveyor, Survey of Co. Road in the ICDSM, reestablished this corner and lists the

J. Pine 58" N 66°45' W, 99.8 feet Popple

J. Pine 8" S 35°25' E, 96.9 feet J. Pine

Oct. 1, 1949 J.J. Rose, RLS, Lot survey of Max School. Block 16, page 1, surface of Rd. find squared post and lists the following

J. Pine stump N 66°45' W, 99.8 feet J. Pine

He added the following new witnesses:

N. Pine 12" N 82°30' W, 95.5 feet Power Pole

Tel. Pole S 28°30' E, 69.0 feet

Dec. 23, 1978 R.F. Schneider, RLS, notes on file in the ICDSM, states scribing and lists the following:

N. Pine 18" WNW, 99.8 to center N. Pine

May 1981 Itasca County Land Corner Record, on file in the ICDSM witness. N. Pine 20" N 80° W, 99 feet +, -.

Nov. Itasca County Land Corner Record on file in the ICDSM

Quarter Corner Sect's 35-36
Notes of orig. Govt. Survey
Post

White Pine 20" S5°W 1.88 ch. (124.1)
Now a decayed windfall S5°W 124.0'
Elm 6" N10°E 35 lks. (23.1')

Found a squared post marking corner
5-2-69 RHM

8/17/94 Pt. Cloudy 75°F
T. WOTKA, G. ROBERTSON, C. KRAUSE
FOUND*

1875 Elm 6" N10°E 23'
Now 9" with upper window open
AND ROTTED ALSO FOUND LOWER
BLAZE ON INSIDE OF TREE

1875 W. Pine 20" S5°W 124'
Decayed windfall
FOUND REMAINS OF 2 POST POINTS DOWN
1 FT IN SANDY SOIL

Also found Pine Post with USFS BIRDY
SIGN S52°W 8³/₄ FT. FROM CORNER LOCATION
FOUND CCC TAG ON DOWNED BIRCH
SEE PAGE 80 FOR SKETCH

which MARKED USFS BIRDY SIGN POST.
SET 2 1/2 CIA WITH 3" BRASS CAP TO
PERMANENT THIS CORNER LOCATION

8/94 W. PINE 16" N77°E 5040
SPIKE/W S. SIDE @ BASE
MK YA 536 BT

8/94 CEDAR 12" N07W 8155
MK YA 535 BT
SPIKE ONLY UP 2 1/2 FT NW SIDE

8/94 W. OAK 8 1/2" S20W 6722
MK YA 535 BT
SPIKE/W NW SIDE @ BASE

8/94 SFD NORTH 285

Set. red top Cedar post on north side of
FR 2194 From which corner bears North
250.0' 5-2-69 RHM

8/9/94 CK
FD. 4X4 W/FSCP 30' N OF FR 2194

T148N R27W

535¹/₄ 536

RLS 14526

199A

Quarter Corner Sec's 23-24

Notes of orig. Govt. Survey 1875

Wood post

Tamarack 6" S70°W 25 lks.

Tamarack 6" N38°E 43 lks.

CERTIFICATE FILED

Corner Sec's. 13-14-23-24

Notes of orig. Gov't. Survey 1875

Wood Post

Tamarack 6" N8°E 52 lks.

Spruce 4" S3°W 34 lks.

Spruce 4" S50°E 44 lks.

Spruce 4" S51°W 25 lks.

CERTIFICATE FILED

44

Quarter Corner Sects. 13-24
Notes of orig. Govt. survey 1875
Wood post
Balm-of-Gilead $14^{\circ} 56' 9'' E$ 15 1/2 Ks.

Balm-of-Gilead $12^{\circ} N 10^{\circ} W$ 19 1/2 Ks.

CERTIFICATE FILED

45

Quarter Corner Sects 13-14
Notes of orig. Gov't. Survey 1875

Wood post

Jack Pine 8" S87°E 11 Iks.

Jack Pine 4" S80°W 13 Iks.

NOTES OF COUNTY ROAD SURVEY 1920

(BRUHN ROAD)

MKD NEW BT'S.

J. PINE 10 N34½W 66.1'

6/15/86 Fd. J. PINE STB. ITASCA CO.

J. PINE 8 S20½W 51.5'

6/18/86 Fd. J. PINE STP. ITASCA CO.

6/18/86 ITASCA COUNTY

MKD NEW BT'S.

N. PINE 20 N25W 39.45'

J. PINE 10 N50E 42.51'

J. PINE 8 S2W 28.61'

CERTIFICATE FILED

34

46

Corner Sect's. 11-12-13-14
Notes of orig. Gov't. survey 1875

Wood post

Tamarack 8" N75°E 16 lks.

Tamarack 6" S57°E 21 lks.

Tamarack 6" S16°W 30 lks.

Spruce 6" N13°W 44 lks

874-9 H. ADAMS 1-8-35

FD. TAM. POST 28" HIGH (SCRIBED) FAIR CONDITION

FD. SPRUCE 8" N13W 42 lks, = 27.7' WITH SCRIBE

T148N R27W S11 BT

PLACE FSLP ON BALSAM 3 COR. BRS. S76W 13 lks.

CERTIFICATE FILED

47

Quarter Corner Sects 12-13

Notes of orig. Govt. survey 1875

Wood post

Balm-of-Gilead 6" N40°W 191ks

Tamarack 8" S68°E 51ks.

CERTIFICATE FILED

G21 Quarter Corner Sects 11-12

Notes of orig. Govt. Survey 1875

Wood Post

Aspen 8" N50°E 3 lks.

Aspen 8" S38°W 2 lks.

NOTES FROM ITASCA COUNTY ROAD SURVEY

#149 - OCT. 1914

MARKED NEW BT's.

POPPLAR 13 N35E 61.1'

BIRCH 11 S40°30'W 62.5'

NOTES ON 874 BY BALKE 6/18/37

SET NEW ELM POST 4" x 4" x 30"

Fd. BIRCH STUMP 14" S39°30'W 91 lks. = 60.0'

MKD. T148N R27 S11 1/4

Fd. ASPEN STUB 10" N41°15'E 97 lks. = 64.0'

PLACE FSLP ON 7" ELM S35°30'W 97 lks. = 64.0'

FROM CORNER - FENCE LINES WEST & SOUTH
OF CORNER - IN MIXED HARDWOODS

CERTIFICATE FILED

874 BY EMMERT 6/28/35

Fd. ASPEN POST - FALLEN DOWN - POOR CONDITION
POST WAS SCRIBED 1/4 S11 + 1/4 S12

Fd. BIRCH STUMP 18" S40W 89 lks. = 58.7'
MKD T148N R27 S11 BT

PLACE FSLP ON ELM 8 S36W 95 lks. = 62.7'

8/22/90 R. MAFFN C. KRAUSE

Fd THE SOUTH AND WEST FENCE LINES DESCRIBED BY THE
874 FROM 1935 AND 1937. PROJECTED THEIR
INTERSECTION AND PULLED A DIST OF 64.0 FT
TO THE ELM W/ THE FSLP. FROM 1957. PLACED
A 60 d SPIKE @ THIS LOCATION AND
WITNESSED WITH THE FOLLOWING TIES

7" ELM STUB 14" S36W 64.0 FT TO NAIL

ASH 6" N19W 72.10 TO NAIL

49

Corner Sects 1-2-11-12
Notes of orig. Govt. Survey 1875
Wood Post.

Aspen 10" N30°W 54 lks. 35.6'

Aspen 5" S63°W 53 lks. 34.9'

NOTES FROM COUNTY ROAD SURVEY

#149 - OCT. 1914

POPPLE 8 N22°50'W 72.0'

POPPLE 6 S34°45'W 61.7'

~~NOTES ON 874 BY BALKE 6/8/37~~

~~SET NEW ELM STAKE 4" X 4" X 36"~~

~~FD. BIRCH STUMP 14" S39°30'W 91 LKS. = 60.0'~~

~~TAKD T148N R27 S11 BT~~

~~FD. ASPEN STUB 10" N41°15'E 97 LKS. = 64.0'~~

CCC DISTANCE FROM 1/4 COR TO SEL. COR.

39.53 CHS OR 2609'

COUNTY 1914 DISTANCE 2584'

CERTIFICATE FILED

South 5.0 ch. leave marsh (330')
East 1.80 ch. Small creek (118.8)
North 6.50 ch. Lake (429')
West 0.80 " leave marsh (528')

874 By H. ADAMS 7/3/35
FD. POST PARTLY BURNED - 36" HIGH SCRIBED
NO BT'S. FOUND

874 By BALKE 6/8/37
SET NEW TAM POST 4" X 4" X 40" SCRIBED

FD. ASPEN 12 S34°W 93 1/2 LKS. = 61.7'
MKD T148N R27W S11 BT

FD. ASPEN 10 N74°W 39 LKS. = 25.7'
MKD T148N R27W S2 BT

CORNER ON WEST SIDE OF HAY MEADOW - ON EDGE
ASPEN TIMBER STAND

12/4/90 RM-GB-MH-CK

RAN LINE DUE NORTH FROM 1/4 BET. SEL'S. 11#12
AT STA. 1294' Q. OF ITASCA COUNTY ROAD #4
PLACE FSLP ON 9" POWER POLE SOUTH SIDE OF ROAD - APPROX. N 1/4
IN CENTER OF ROAD - TAG BEARS S48°W 55.0'
CONTINUE NORTH TO STA. 2589' N - THEN 55' EAST TO
4" X 4" X 48" CEDAR POST LEANING IN MARSH GRASS
BESIDE POST FD. 3/8" X 23" IRON PIN BY D.H.R.
NO EVIDENCE OF BT'S RECORDED ABOVE OR COUNTY NOTES
CORNER IS LOCATED AT WEST EDGE OF MARSH GRASS + BRUSH
CHECKED ORIG. TIE TO CREEK 119' E EAST OF COR. CHECKED
WITHIN 1 FOOT

OPEN AREA AROUND POST AND FOUND WELL ROTTED POST LYING
DOWN - NO OTHER POINTS FOUND
RESET 4 X 4 CEDAR POST - SET FIRMLY IN GROUND - NOW
30" HIGH AND RESET IRON PIN AT EAST SIDE OF POST
WITNESSED BY

ASH 7 S52°W 40.45' NAIL + BT TAG

ASH 9 N71°W 32.30' NAIL + DISK + TAG D.H.R.
BROKEN TOP ON ASH

MAPLE 7 N63°W 38.35 NAIL + TAG

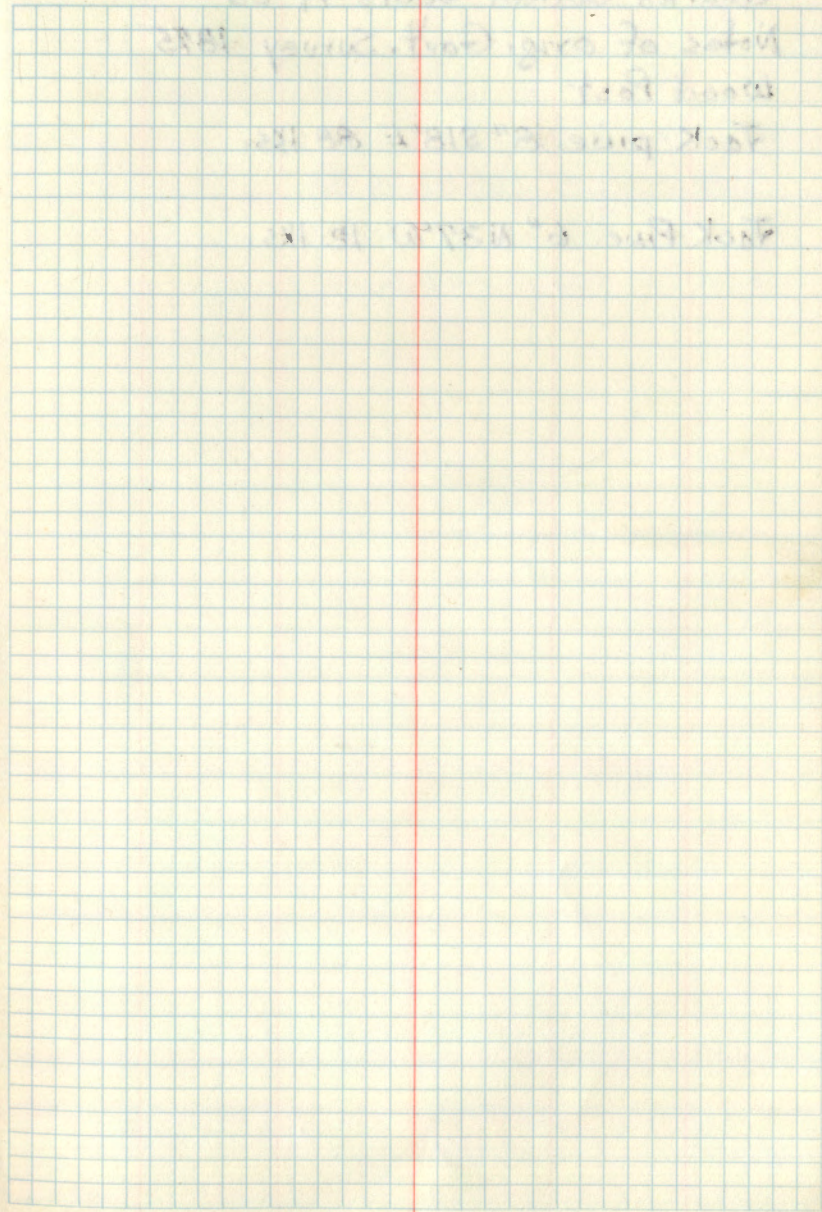
LINE SHOULD HAVE BEEN RUN AT N 1/4
TAG AT N 1/4 IS FROM CORRECTED LINE OR 27' E OF
FIRST LINE RUN AT DUE NORTH

50

Quarter Corner Sects 26-35
Notes of orig. Govt. Survey 1875
Wood Post

Jack Pine 8" S52°W 19 Iks.

Jack Pine 6" N27°E 41 Iks.



51 N-19 Sec page 12

Quarter Corner Sects 14-23

Notes of orig. Govt. Survey 1875

Wood Post

Jack pine 8" S18°E 88 lks.

Jack Pine 6" N37°W 12 lks.

Cor. sects 10-11-14-15

Notes of orig. Govt. Survey of 1875

Wood post

Birch 6" N39°W 14 Iks.

Ironwood 4" S66°W 34 Iks.

Linden 6" S52°E 18 Iks.

Elm 8" S59°E 50 Iks.

CERTIFICATE FILED

53

Quarter Corner Sections 10-11
Notes of original Govt Survey of 1875

Wood post

Balm-of-Gilead 8" 549°E 12 Iks.

Balm-of-Gilead 3" 542°W 21 Iks.

CERTIFICATE FILED

54 E-17

E-17 Affidavit

Corner Sections 2-3-10-11 7/12/79

Notes of orig. Govt. Survey of 1875

Wood Post Found hole in ground w/rotted wood
inside

White pine 24" S 80° W 121 Iks

Ed. large pine stp. 1/2 log at brq. 1 dist. - well rotted

Aspen 4" S 77° E 18 Iks. No evidence remains

" 3" N 40° E 27 Iks, No evidence remains

" 3" N 66° W 14 Iks. No evidence remains

CCC notes by H. Adams 10-14-35

Found Balsam post - fair condition 28" high

Found Aspen 12" N 45° E 32 Iks. = 21.1' w/FSLP

① Found Aspen log on ground w/scribe T148NR visible

Found Aspen 18" S 35° W 27 Iks. = 17.8'

② Found large aspen stp. well decayed and log

Both aspen scribed, found by CCC's

① at bearing N 35° E 21.1' log well rotted

② mostly rotted away S 45° W 17.5'

Found evidence of this corner, in line running for

district timber sale 5-7-73 Curt Krause

Ed. state h P on 7" Maple N 91° E 10.9'

CERTIFICATE FILED

To perpetuate this corner I set a 2" dia. x
5' long galvanized steel pipe, filled with
concrete and capped with 3" dia. brass cap
marked.piled 5 large rocks around
iron pipe

T148NR27W

S352

S10511

1976

Witnessed by

RLS NO

W. Pine 21" N 85° W 122.2' mtd. S3 BT

W. Pine 14" S 18° W 113.75' mtd. S10 BT

W. Oak 12" S 3° E 121.25' mtd. S11 BT

Maple 7" N 91° E 10.95' mtd. S2 BT

Set 8' steel sign post due south 3.2' w/FS sign

4-29-76 Curtis R. Krause SA-4

Corner is 40' south of woods trail NE-SW

Swamp is 225' south of corner brq. E-W

old open field is approx. 450' East of corner
on old blazed line - blazes also run west of corner

center sup. NW-SE approx. 500' west of corner

Revised &
Certificate by
M.S.

Quarter Corner Sects 2-3
Notes of orig. Govt. Survey of 1875

Wood post

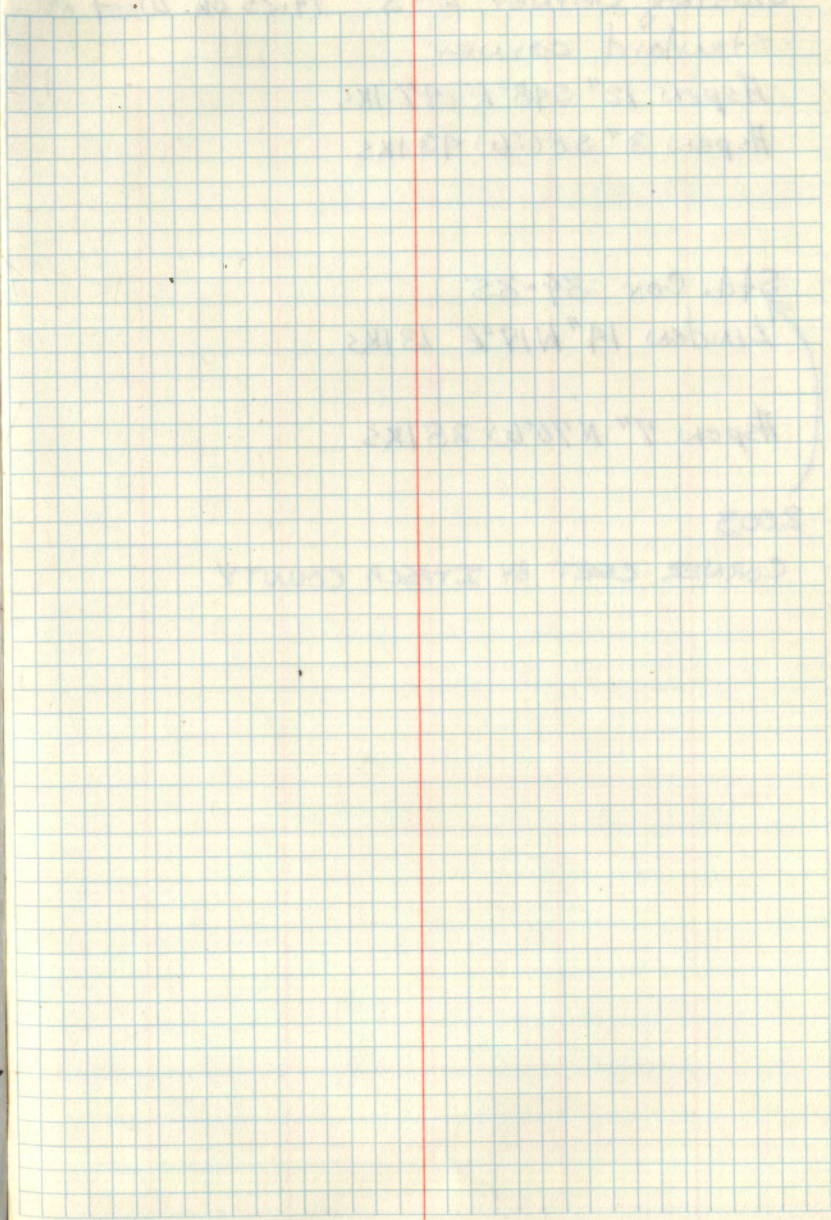
Tamarack 6" N46°W 68 lks.

Elm 6" N65°E 77 lks.

Swamp is 3.0 ch. North

Quarter Corner Sections 32-33
Notes of orig. govt. survey of 1873
wood post
Spruce 4" S82°E 10 IKS.

Tamarack 9" N74°W 44 IKS.



57

Closing Corner 2-3 14.25 ch. West of
Standard corner

Aspen 12" S48°E 47 IKS

Aspen 3" S86°W 43 IKS

Std. Cor. 34-35

LINDEN 14" N19°E 13 IKS

Aspen 7" N70°W 38 IKS

2003

CORNER CERT BY ITASCA COUNTY

Standard Quarter Cor. Sec. 34
 Notes of orig. Govt Survey 1875
 Tam. 5" N10°E 101ks.

Tam 5" N50°W 251ks.

2003

CORNER CERT ITASCA COUNTY

[Faint, illegible handwriting on the top of the right page, possibly bleed-through from the reverse side.]

59

Standard Gov. Sects 33-34
Notes of orig. Govt. Survey 1870
Tqm. $5''$ N 5° E 5.60 ch.

Tqm $5''$ N 2° W 5.85 ch.

2003

CORNER CERT BY ITASCA COUNTY

60 X-13

Quarter Corner Sects. 33-34

Notes of orig. Govt. Survey of 1875

Wood post

Balsam 5" S79°E 109 lks.

(103.0')
Cedar 6" N1°W 156 lks.

No orig. evidence was found
Chained North 2640' from Cor 33-34-3-4
placed F.S. metal location poster on a
8" Elm from which cor. bears South 8'
11-26-69 R.H. McDonald

C.C.C. NOTES IN CCC FIELD BOOK 90 - HABERLY ^{1930's}

Fd. CEDAR STUB S79E 109 lks. = 71.94'

Fd. BALSAM STUB N1W 150 lks. = 99.00'

61 See page 38 of this book.

Corner Sections 33-34-27-28

Notes of orig. Govt. Survey of 1875

Tam. 3" N1°E 79 Iks.

Tam. 6" N5°W 92 Iks.

Tam. 4" N65°W 85 Iks.

Spruce stub 8" S75°E 67 Iks.

Quarter Corner Sects. 27-34

Notes of orig. Govt. Survey of 1875

wood post

Aspen 8" N48°E 47 lks.

Aspen 6" S25°E 34 lks.

63

see page 39

Quarter Corner Sects. 27-28

Notes of orig. Govt. Survey of 1875

Wood post

White pine 12" S25°W 90 lks.

White pine 14" S53°E 93 lks.

Quarter Corner Sects 15-22
Notes of orig. Govt. Survey 1875

Wood post

Tamarack 5" S53°E 51ks. = 3.30'

Spruce 4" N20°E 11 kks. = 7.26'

874 NO DATE OR NAME

Fd: WOOD POST SCRIBED

Fd. TAM. 9 N24W 20 LKS. = 13.20' MKD 1/4 S15 BT

Fd, LARGE TAM STUMP WITH ROOTS AT N W

TOP OF STUMP APPEAR LIKE TOP WAS
CHOPPED OFF TO PRESERVE STUMP - NO
MARKS COULD BE SEEN - BUT PORTION OF
STUMP HAS FLAT AREA FACING WIRE
FENCE COR.

Fd. DOWN WIRE FENCE LINES RUNNING
N-S-E-W - ALSO LOOPS IN WIRE WHICH
WOULD INDICATE A COMMON POST OR COR.

7-28-94 OK

DUG UP AREA OF WIRE INTERSECTION - NO POST
COULD BE FOUND - SEARCH AREA WAS 6' NWS
4' E+W - SPENT 4 HRS SEARCHING - SET
2" ASH PICKET AT INTERSECTION AND PLACED
FSLP ON 4" ASH N19E 55' AS APPROX COR.

ORIG. TIES AT 1/4 COR. - E, RANDOM
264' 36.00 CHS ENT. TAM, SWP, NE
396' 46.00 CHS, W, SWP, N+S

8-4-94 CK - BOB BEHR (BLANDINE)
Fd. 4" TAM. POST 5' HIGH OR LONG AT W1/16
LOCATION - RAN WITH LOCATOR WEST FOLLOWING
WIRE AND RIBBON LINE - RETURN TO W1/16 AND
RAN EAST WITH LOCATOR TO QUARTER COR.
LOCATION + RIBBON LINE - FOREST SERVICE
HAS SALE TO SOUTH OF THIS LAST LINE AND
MR. HURLEY IS HAVING HIS LAND LOGGED NOW
HE OWNS FROM SEL. COR. TO QUARTER COR.
WIRE FENCE RUNS FOR 1/2 MILE - NO STANDING
POST WHERE SEEN - BUT MANY ARE LYING ON
GROUND - EVEN IN WET SWAMP, NO POST COULD
BE FOUND

SEARCH AREA IS AT SWAMP EDGE - ASH + TAM.
SWAMP NORTH - ASPEN - BALSAM SOUTH

NO STUMPS WOULD TIE TO FENCE COR. LOCATION
SEARCH 50' RADIUS - NOTHING COULD BE FOUND

WIRE FENCE RUNS FROM SEL. COR. TO 1/4 COR. TO
WEST RAN + RIBBONED TODAY

65

Quarter Cor. Sec's 29-32
Notes of orig. Govt. Survey
Wood post
White pine $8''$ N 13° E 27 lks.

Tam. Stub $10''$ S 27° E 25 lks.

Notes of Itasca Co Road Survey 1918
Aspen $10''$ N 23° E 53.0'

Aspen $9''$ S 13° E 56.3'

10-8-99 ITASCA COUNTY KEN WHITEHORN
PLAT OF SECTION 29 SHOWS COUNTY MONUMENT
SET. CORNER CERT INFORMATION: SET 30 INCH
ALUMINUM MONUMENT WITH $\frac{1}{2}''$ X 2" REBAR INSIDE.

WOOD $8''$ N 64° E 82.34 FT TO 60d SPK & WASHER ON NORTH
SIDE OF TREE.

FT STEEL FENCE POST NORTH OF MONUMENT NO DIST
ON CERT.

66 V-9

affidavit 7/12/79

Corner Sections 28-29-32-33
Notes of orig. Govt Survey of 1875
Wood post
Tamarack stub 10" S52°E 12 lks.

Elm ^{stub} 8" S65°W 114 lks. - No evidence

Tamarack ^{stub} 16" N63°W 49 lks

Tam. stub 6" N61°E 62 lks.

Notes of Itasca Co. road survey of 1918
Tam. 6" S31°W 35.0' - No evidence

Tam. 7" N49°W 73.3' - Stump hole

Tam. 6" N66°E 58.0' - In road

Tam. 6" S75°E 41' - Found tamarack log
down scribe marks visible

1970 Ranger Rates states on card that a
scribed squared post are set about 4'
south of road in lowland brush type

Get Rates to show where he observed post,
recent ditching has apparently destroyed posts.

11/17/70

WRL Walker

Set a 6 inch square, 5 foot long concrete
monument capped with a 3 inch diameter
brass tablet stamped -

T148N P27W

S29 | S28

S32 | S33

1970

RLS. NO. 6807

Witnessed by:

Tamarack 12" S3°E 53.0 feet scribed S33 BT
NOW 16" OVERGROWN

Tamarack 5" N50°E 67.1 feet scribed S28 BT
NOW 3 FT STUB 5" DBH, SCRIBE VISIBLE

Elm 4" N 43° W 62.6 feet scribed S29 BT
ELM REMOVED BY BRUSH HOG,

Cedar post 4" X 4" X 7' with signs S4-2'

S4-4 attached due South 17.0 feet
CEDAR POST FALLEN OVER

12/29/70
WRL

SURVEY BY R. F. SCHNEIDER RLS WALKER, MN.
DEC. 1978

FD. BRASS CAP - ON CONCRETE MONUMENT
IN PLACE

CS '116 in Sec. 16

Set by Cadastral Survey by William H.
Okerman RLS Bemidji, MN.

SURVEY BY Wm. OKERMAN + DON PEPPER
FOR J. L. HURLEY 1975

TIES TO NAIL AT CORNER

ANCHOR POLE S45W 48.48'

ORANGE GATE POST S72E 21.88'

7/12/94 RM + CK

Fd. FOREST SERVICE MONUMENT 2" x 5" IRON PIPE
WITH BRASS CAP MARKED

MONUMENT AND SIGN POST T148N R27W

LYING ON GROUND BY (OAK BT NE) C
WILL BE RESET BY JOHN PETERSON S1/16 | S16

LOCAL RESIDENT (SOON) C

HE HAS BARROW AREA AT CORNER 1975

LOCATION RLS. NO 6807

BT'S FOUND 7/12/94 (MARKED 11-6-75 CK W.D.)

W. OAK 20" N47E 24.50' SCAR + TAG

W. OAK 18 N74W 25.15' " "

W. OAK 18 S1E 97.35' " "

THIS IS FOREST SERVICE PROPERTY CORNER

S.E. 1/16 in Sec. 16

Set by Cadastral survey by William H.
Okerman RLS Bemidji, MN.SURVEY BY Wm. OKERMAN & DON PEPPER
FOR MR. J. L. HURLEY 1975TIES TO CORNER LOCATION - SET $\frac{3}{4}$ " x 30" IRONBALSAM 10 N63W 27.65' NAIL + DISC
NOW BALSAM WINDFALL AT N63W 27.65'BALSAM 8 N13W 42.0' NAIL + DISC
NOW DEAD BALSAM SNAG N13W 42.0' SCRIBE VISIBLEW. SPRUCE 6 NS1E 6.15' NAIL + DISC
NOW 10" W. SPRUCE NS1E 6.15' SCAR TO IRONTWIN CEDAR 8 NB5E 18.45' NAIL + DISC
NOW 11" CEDAR NB5E 18.45' SCAR TO IRON

7/12/94 RM & CK

Ed. 2" x 5" IRON PIPE WITH BRASS CAP MARKED

IRON IS 24" ABOVE GROUND T148N R27W

25'± NORTH OF ROAD & E+W SE 1/16 S16

1975

RLS NO. 6807

8' HEAVY STEEL SIGN POST WEST 3.40'

DATE ON 1BT TAGS 11-5-75 CK-HP

THIS IS FOREST SERVICE PROPERTY CORNER

TIES TREES BY OKERMAN OR PEPPER HAVE
CHEST HIGH BLAZE & KNEE HIGH BLAZE - NO SCRIBE
ALSO NAIL + DISC ON SIDE OF EACH TREE

South 1/16 Bet. Sec's, 15-16

Set by Cadastral survey by William H.
Okerman RLS Bemidji, Minn.

SURVEY BY Wm. OKERMAN + DON PEPPER
FOR MR. J. L. HURLEY 1975

TIES TO NAIL IN ROAD - TAKEN OFF COPY OF
PLAT IN FOLDER

POWER POLE S41W 49.30'

NEW POWER POLE AT THIS LOCATION NOW

W. PINE 24" N24E 88.0'

Fd. W. PINE N24E 88.0' BASE SCAR + NAIL + DISC

CEDAR 7 N46E 43.16'

Fd. CEDAR N46E 43.16' BASE SCAR

7/12/94 RM+CK

NO MONUMENT COULD BE FOUND OR NAIL IN ROAD

AT CORNER LOCATION FROM TIES REMAINING

THIS IS FOREST SERVICE PROPERTY CORNER

TIE TREES HAVE CHEST HIGH + KNEE HIGH
BLAZES - NAIL + DISC ON SIDE OF TREE

Z-17

Southeast Corner of Section 34

Aug. 13, 1982 Ken Whitehorn, RLS and Glenn Kosenko, USFS, visited this corner. Didn't have record description but found a 6.0 6 in concrete cylinder (with stove pipe wrapped around) with a 3/4 in Standard Brass cap.

stamped:

T148N R27W

S.34 | S.35

S.3 | S.2

T147N

1936

Cylinder protruded 0.3 ft out of ground on top of cut at west edge of RFS Rd # 2198.

Also find squared post at west edge of Mon and

Metal sign post with 54-2 and

54-4 signs attached, 2.8 ft north of mon.

find the following BT's:

R. Pine 20.8 in N73°E 24.40 ft to 16d nail in NW face. Scribing still partially visible

R. Pine 22.3 in S13½°E 27.60 ft to 16d nail in W face. Scribing still visible.

R. Pine 18.6 in N18½°W 29.70 ft to 16d nail in E face. scribe partially visible.

S. Pine Stamp Block N57½°W 23.10 ft to 60 d BT's scribe visible at base

CERTIFICATE FILED

70

Orig R. Pine 21.6 in S36½°W 24.40 ft to 16d nail in NW face. upper blaze visible (had been cut into with ax, probably 1936). Cut into base for BT blaze. find with some scribe and reverse image legible but cut after and Rotting. Took impression of upper scribing and pictures.

Certificate filed 4-27-83

Doc # 357073 (10)

9-8-94 GK

FD. ALL BT'S. ALIVE - IN GOOD SHAPE - PAINTED RED BANDS AND TAG BACKSIDE
SET 2 8" STEEL SIGN POSTS NORTH 4.0' + EAST 4.0'
CORNER IS 10' WEST OF FR 3197
REMOVED 6' SIGN POST

See page 24 of this Book
See Book 1, PP 11 T147N R27W

71 E-13 T148N R27W 5th P.M.

Corner Common to
Sections 3, 4, 9 and 10

Nov 1875 B.G. Baldwin set post for corner
from which:

Tam	6 inch	N21°E	53 lks	34.98 ft
Cedar	4 inch	N26°E	21 lks	13.86 ft
Cedar	4 inch	N62°W	25 lks	16.50 ft
Cedar	6 inch	S77°W	30 lks	19.80 ft

10-15-35 USFS 874 - Arthur Lager, Chief of
Party find 30 inch tamarack post in
good condition scribed "T148N R27W S4",
"T148N R27W S9", "T148N R27W S10" and
"T148N R27W S3" He states he doesn't
believe this to be original corner
because it is too recent. The
post is witnessed by:

Tamarack snag	N59°E	0.49 chs	32.34 ft
---------------	-------	----------	----------

scribed "T148N R27W S3" and "BT"

Cedar	2 inch	S50°W	0.06 chs	3.96 ft
-------	--------	-------	----------	---------

Metal location poster.

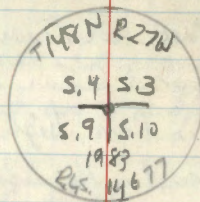
Feb 1975 Bill Okerman/Donn Pepper Survey.

CERTIFICATE FILED 71

1982 Glenn Loganais, MN/DNR. Rev Riser, found
a square post and 2 or 3 Cedar BTs at
edge of swamp / chain from high ridge.
Painted blue line east. He didn't take
any measurements. Need canoe to get across
water.

May 17, 1983 - Ken Whitehorn, Bill Ausk, Greg Robertson, USFS,
and Don Harmon, Volunteer, Brainerd U Tech,
visited corner found 3.5 inch² post
35 inches long scribed "8N R27W S10",
"8W R27W S9", "4N R27W S4" and
4th side has scribe marks but are un-
readable. Post was lying on cedar tip up with
USFS location poster dated 10/15/35 &
initialled A.L. there was also the date 2/6/75
on the tag but no initials. Tip up had
nail & disc in side of tree. Also found
five cedars blazed but no scribing with
nail & disc in each. Big conit was 8-D.
End 2 points under bluff of tip up
land ties: S-169'; N-207 ft; W-66 ft)
Set 5/8" x 10 ft aluminum rod with a
3/4 inch aluminum cap stamped:

E-13 (Cont)



up 0.3 ft.

End (1975) Cedar	8.5 inch	S 15° W	35.94 ft	To Nail & disc
(1975) Cedar	6.5 inch	N 70° E	20.20 ft	"
(1975) Cedar	6.0 inch	N 30° E	20.13 ft	"
(1975) Cedar	9.4 inch	N 52° W	46.21 ft	"
(1975) Cedar	9.7 inch	S 79° W	20.10 ft	"
Tag on Cedar	7.0 inch	S 55° E	6.20 ft	"

New BT's:

Cedar	5.3 inch	N 85° E	14.62 ft	20 d in N face
Cedar	7.2 inch	N 51° W	30.34 ft	20 d in SW face
Cedar	6.2 inch	S 73° W	17.53 ft	20 d in SW face
Steel fence Post	8 ft	North	3.0 ft	with 54-9 sign

also find stump remains at orig bearing & dist in NE NW ~~SE~~ quadrants and what appears to be 1935 fararak snag but no marks or blaze to prove them out.

all BT's double blazed with red enamel

60d spike vert in base blaze on 54-3 signs attached

Trees are scribed
'53' BT'
'54' BT'
'54 1/2' BT'

Because of tipout Bearing and distance donot match 1935

CONT FROM Pg 17

5/3/90 R MAIN D. OJANEN

FD MONUMENT IN GOOD CONDITION

5" OAK S64E 4.95' IS DEAD. REPLACED

W/ NEW BT.

MAPLE 6" N32 E 24.40' TO NAIL "529" BT

74

MEANDER CORNER EAST SIDE OF RIVER

BET. SEC'S. 1+12

NOTES OF ORIG. GOV'T. SURVEY 1875

SET WOOD POST

N. PINE 18 N77E 156 LKS. = 103.0'

Bur. DAK 9 S77E 70 LKS. = 46.2'

CERTIFICATE FILED

74

7.00 CHS. = 462' - WEST OF SEC. COR.

J-15

75:

QUARTER CORNER 10-15

1875 ORIG GOVT SURVEY B.C. BALDWIN
SET WOOD POST

TAM 8" SSE 14 9.2

SPRUCE 14" N75W 22 14.5

1935 A.H. JAGER 874-9

Fd 4" x 3/8" TAMARACK POST ALSO Fd TAMARACK
BT 12" S4E 13 LKS. PLACED MLRON
8" CEDAR ON THE NORTHWEST SIDE FROM
WHICH CORNER BEARS N40W 09 CHS.

1965 Light

Fd old 4' STAKE/W/ SCRIBE LAYING ON
NORTH SIDE OF 10" CEDAR/W/ TAG ON
NORTH SIDE OF TREE, POST IS NZOW
6 FT.

5/10/73 C. KRAUSE

Fd 4" SCRIBED POST W/ SCRIBE VISIBLE
K4SD 14 SE. Fd old FSLP ON 10" CEDAR
S40 E 6'. Fd ORIG TAM BT NO SCRIBECERTIFICATE FILED ⁷⁵AUG-30-1990 R. MAIN C. KRAUSE G. BRAMA U.S.F.S.
TIM WOTZKA G. ROBERTSON ITASKA COSET A 2 1/2" X 5' GALV STEEL PIPE
W/ 3" BRASS CAP STAMPED: T148N R27W
310
OLD SCRIBED POST IS @ BASE OF $\frac{1}{4}$ "
NEW MONUMENT. 515
RHS 19526

WITNESSED BY:

CEDAR 12" S40E 7.63 T6 N42 1/W/ CLL TAG
CEDAR 10" S66E 19.74 MKO 1/4 515 BT
CEDAR 7" S34W 20.62 MKO 1/4 515 BT
CEDAR 8" N33W 10.56 MKO 1/4 515 BT8 FT STEEL SIGN POST 3.3 FT EAST LINE TO STD
EAST. 5-7-07 R. MAIN J. SCHOONOVER

1973 CONT.

VISIBLE. TIED POST LOCATION W/ TWO
CEDARS NOT SCRIBEDCEDAR 8 N33W 11.0'
CEDAR 8 S88E 16.3'

NORTH ONE SIXTEENTH 31-32

4/1/92 R. MAIN, D. OJANAN, B. AUSK

S. Maple 9" S60°E 19.17ft

Scribed N $\frac{1}{16}$ S32 "BT"

S. Maple 9" S25°W 17.33ft

Scribed N $\frac{1}{16}$ S31 "BT"

S. Maple 9" N10°W 12.41ft

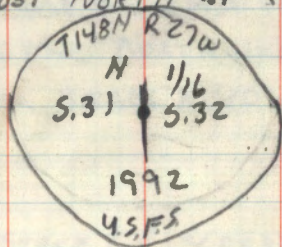
Scribed N $\frac{1}{16}$ S31 "BT"

Set A 2" by long galvanized

pipe with a 3" BRASS CAP MKD,

STEEL SIGN POST NORTH 4.1 FT

MONUMENT UP 1 FOOT



QUARTER CORNER SEC 30-31

12/2/92 R. MAZN BAUSK

SET A 2" X 4 FT GALVANIZED STEEL MONUMENT
WITH A 3" BRASS CAP AT LOCATION SURVEYED
BY GORDON CHRISTENSON. MONUMENT IS
12" ABOVE GROUND AND WITNESSED BY.

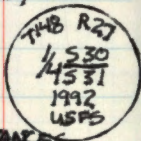
W OAK 15" S 48 E 66.43 MKD 4530 BT

MAPLE 9" N 40 W 63.48 MKD 4530 BT

W OAK 6" N 30 E 31.81 MKD 4530 BT

8 FT STEEL SIGN POST EAST $\frac{1}{2}$ FT WEST $\frac{1}{2}$ FTBEARING TREES DOUBLE BLAZED PAINTED RED $\frac{1}{4}$ DISTANCES

TO SPIKES IN SIDE OF TREES



CORNER TO SECTIONS 15-16-21+22
 NOTES OF ORIG. GOV'T. SURVEY 1875

SET WOOD POST

ASPEN 5 N59E 31 LKS. = 20.46'

FALLS IN ROAD DITCH

BALMIE 13 S38W 58 LKS. = 38.28'

FALLS UNDER POWERLINE - NO TRACE

BALMIE 8 S18E 56 LKS. = 36.96'

FALLS IN ROAD DITCH

N. PINE 20 N31W 91 LKS. = 60.06'

FALL UNDER POWERLINE - NO TRACE

SURVEY By Wm. OKERMAN ^{RLS 6807} & DON PEPPER ^{RLS}
 FOR J. L. HURLEY 1975

~~TIES ON COPY IN FOLDER~~ ON WORK SHEET
 FROM LANDECKER & ASSOC. WALKER, MN.

SURVEY By BOB SCHNIEDER RLS WALKER
 SET SPIKE FROM OKERMAN TIES

POPLAR 5 S50E 30.75'

Fd. ASPEN LOG & STUMP WITH BLAZES & NAIL
 AND DISC. AT S50 E

FOREST SIGN POST EAST 19.45'

Fd. CCC POST 6" WITH RUSTED TAG LYING
 ON GROUND - Fd. HOLE & BASE OF POST AT
 EAST 19.45' FROM QU OF ROAD N4S

7-12-94 RM - CK

NO SPIKE OR NAIL COULD BE FOUND IN ROAD
 WITH LOCATOR
 Fd. 10" CEDAR FENCE POST (DOWN) 22' EAST OF ROAD
 DITCH LEADING EAST JUST NORTH OF FENCE LINE
 EAST - THIS FENCE RUNS TO QUARTER COR. LOCATION
 Fd. HOLE FROM CCC POST WITH TAG - POST LYING
 DOWN - Fd. BASE OF CCC POST AND STOOD UP
 REMAINS IN HOLE - SET 16" NAIL IN ROAD
 WITH RIBBON AT WEST 19.45' FROM CCC POST
 TAG WAS WELL RUSTED - NO INFO COULD BE
 READ ON TAG CK.

8-4-94 CK

Fd. 6" ASPEN DOWN WITH CHEST HIGH BLAZE
 AND KNEE HIGH BLAZE - NO SCRIBE - ALSO Fd.
 NAIL & DISC ON SIDE - STUMP 13 1/4" HIGH
 PRINTED BOTH LOG & STUMP TODAY - OUT OF TIME

SHOULD DIG IN ROAD FOR POSSIBLE OLD POST

8-9-94 CK

PULL BOTH DISTANCES FROM TIES AND SET 60"
 SPIKE 4" BELOW ROAD - REMOVED 16" NAIL
 SPIKE IN CENTER OF FR 3196 AND IN LINE WITH
 FENCE LINE EAST - APPROX. SECTION CORNER

ITASCA COUNTY PERSONNEL DUG THIS POSITION
 BY HAND AND FOUND NOTHING UNDER ROAD 1994 AUG.

QUARTER CORNER BET. SEC'S. 15+16

NOTES OF ORIG. GOV'T SURVEY 1875

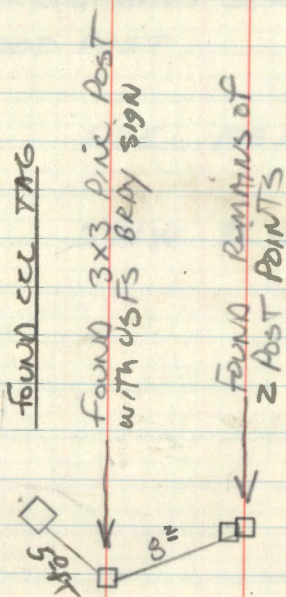
SET WOOD POST

N. PINE 16 S2E 108 LKS. = 71.28'

N. PINE 12 S74W 96 LKS. = 63.36'

Y4 35/36

8/17/94



IMPROVED TABLES AND INFORMATION

HORIZONTAL STADIA CORRECTIONS

2°-00'	— 0.1	21°-00'	— 12.8	33°-00'	— 29.7
3°-00'	— 0.3	21°-30'	— 13.4	33°-15'	— 30.1
4°-00'	— 0.5	22°-00'	— 14.0	33°-30'	— 30.5
5°-00'	— 0.8	22°-30'	— 14.7	33°-45'	— 30.9
6°-00'	— 1.1	23°-00'	— 15.3	34°-00'	— 31.3
7°-00'	— 1.5	23°-30'	— 15.9	34°-15'	— 31.7
8°-00'	— 1.9	24°-00'	— 16.5	34°-30'	— 32.1
9°-00'	— 2.5	24°-30'	— 17.2	34°-45'	— 32.5
10°-00'	— 3.0	25°-00'	— 17.9	35°-00'	— 32.9
10°-30'	— 3.3	25°-30'	— 18.6	35°-15'	— 33.3
11°-00'	— 3.6	26°-00'	— 19.2	35°-30'	— 33.7
11°-30'	— 4.0	26°-30'	— 19.9	35°-45'	— 34.1
12°-00'	— 4.3	27°-00'	— 20.6	36°-00'	— 34.6
12°-30'	— 4.7	27°-30'	— 21.3	36°-15'	— 35.0
13°-00'	— 5.1	28°-00'	— 22.0	36°-30'	— 35.4
13°-30'	— 5.5	28°-30'	— 22.8	36°-45'	— 35.8
14°-00'	— 5.9	29°-00'	— 23.5	37°-00'	— 36.2
14°-30'	— 6.3	29°-30'	— 24.3	37°-15'	— 36.6
15°-00'	— 6.7	30°-00'	— 25.0	37°-30'	— 37.1
15°-30'	— 7.2	30°-15'	— 25.4	37°-45'	— 37.5
16°-00'	— 7.6	30°-30'	— 25.8	38°-00'	— 37.9
16°-30'	— 8.1	30°-45'	— 26.2	38°-15'	— 38.3
17°-00'	— 8.5	31°-00'	— 26.5	38°-30'	— 38.7
17°-30'	— 9.0	31°-15'	— 26.9	38°-45'	— 39.1
18°-00'	— 9.5	31°-30'	— 27.3	39°-00'	— 39.6
18°-30'	— 10.1	31°-45'	— 27.7	39°-15'	— 40.0
19°-00'	— 10.6	32°-00'	— 28.1	39°-30'	— 40.5
19°-30'	— 11.2	32°-15'	— 28.5		
20°-00'	— 11.7	32°-30'	— 28.9		
20°-30'	— 12.3	32°-45'	— 29.3		

Chains to Feet

1	66
2	132
3	198
4	264
5	330
6	396
7	462
8	528
9	594
10	660

Feet to Chains

100	1.515
200	3.030
300	4.545
400	6.060
500	7.575
600	9.090
700	10.606
800	12.121
900	13.636
1,000	15.151