

T 148N R 25W

BA #5
TRAVERSE
T 148N R 25W

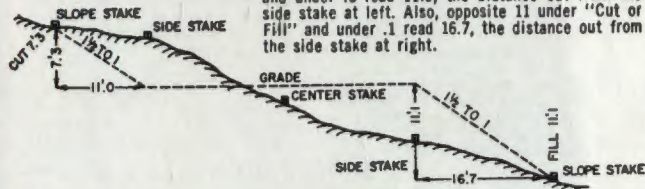
K2
FIELD BOOK

82-0032

DISTANCES FROM SIDE STAKES FOR CROSS-SECTIONING

Roadway of any Width. Side Slopes 1½ to 1.

In the figure below: opposite 7 under "Cut or Fill" and under .3 read 11.0, the distance out from the side stake at left. Also, opposite 11 under "Cut or Fill" and under .1 read 16.7, the distance out from the side stake at right.



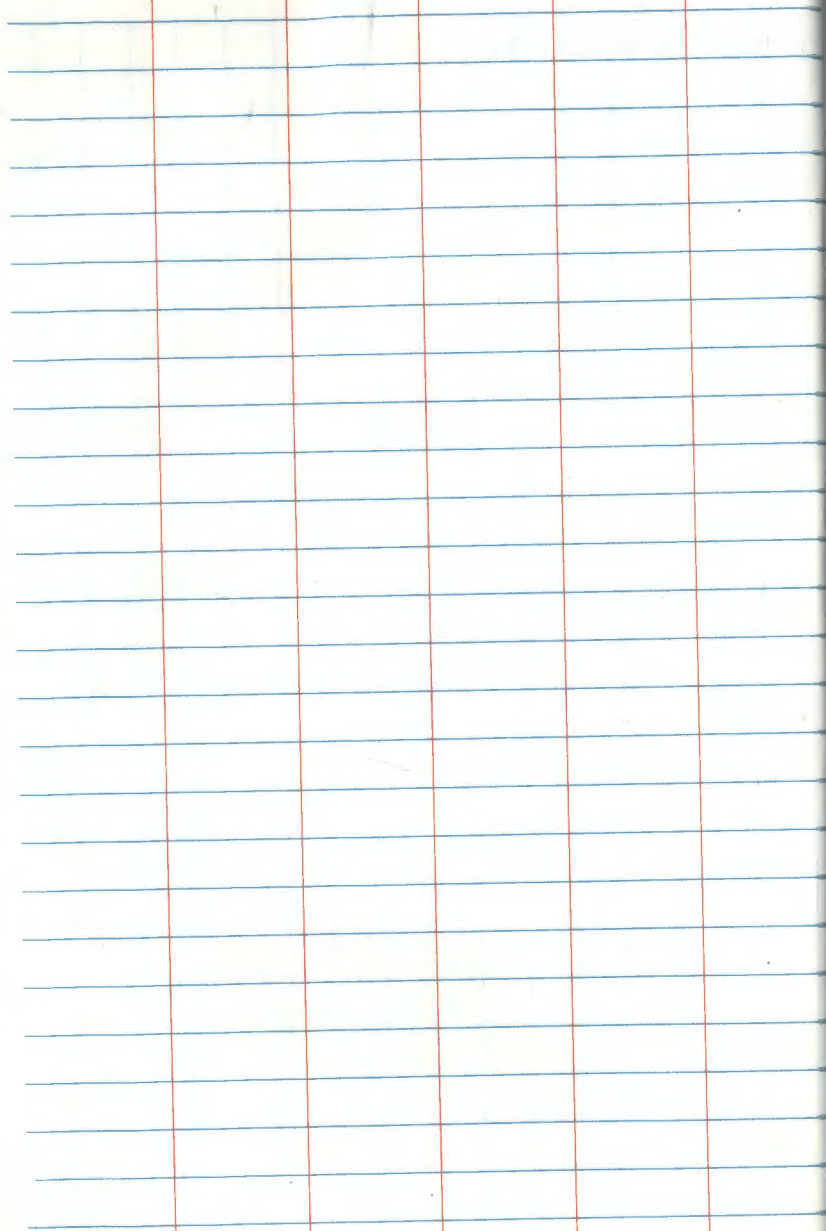
Cut or Fill	Distance out from Side or Shoulder Stake									Cut or Fill	
	0	.1	.2	.3	.4	.5	.6	.7	.8		.9
0	0.0	0.2	0.3	0.5	0.6	0.8	0.9	1.1	1.2	1.4	0
1	1.5	1.7	1.8	2.0	2.1	2.3	2.4	2.6	2.7	2.9	1
2	3.0	3.2	3.3	3.5	3.6	3.8	3.9	4.1	4.2	4.4	2
3	4.5	4.7	4.8	5.0	5.1	5.3	5.4	5.6	5.7	5.9	3
4	6.0	6.2	6.3	6.5	6.6	6.8	6.9	7.1	7.2	7.4	4
5	7.5	7.7	7.8	8.0	8.1	8.3	8.4	8.6	8.7	8.9	5
6	9.0	9.2	9.3	9.5	9.6	9.8	9.9	10.1	10.2	10.4	6
7	10.5	10.7	10.8	11.0	11.1	11.3	11.4	11.6	11.7	11.9	7
8	12.0	12.2	12.3	12.5	12.6	12.8	12.9	13.1	13.2	13.4	8
9	13.5	13.7	13.8	14.0	14.1	14.3	14.4	14.6	14.7	14.9	9
10	15.0	15.2	15.3	15.5	15.6	15.8	15.9	16.1	16.2	16.4	10
11	16.5	16.7	16.8	17.0	17.1	17.3	17.4	17.6	17.7	17.9	11
12	18.0	18.2	18.3	18.5	18.6	18.8	18.9	19.1	19.2	19.4	12
13	19.5	19.7	19.8	20.0	20.1	20.3	20.4	20.6	20.7	20.9	13
14	21.0	21.2	21.3	21.5	21.6	21.8	21.9	22.1	22.2	22.4	14
15	22.5	22.7	22.8	23.0	23.1	23.3	23.4	23.6	23.7	23.9	15
16	24.0	24.2	24.3	24.5	24.6	24.8	24.9	25.1	25.2	25.4	16
17	25.5	25.7	25.8	26.0	26.1	26.3	26.4	26.6	26.7	26.9	17
18	27.0	27.2	27.3	27.5	27.6	27.8	27.9	28.1	28.2	28.4	18
19	28.5	28.7	28.8	29.0	29.1	29.3	29.4	29.6	29.7	29.9	19
20	30.0	30.2	30.3	30.5	30.6	30.8	30.9	31.1	31.2	31.4	20
21	31.5	31.7	31.8	32.0	32.1	32.3	32.4	32.6	32.7	32.9	21
22	33.0	33.2	33.3	33.5	33.6	33.8	33.9	34.1	34.2	34.4	22
23	34.5	34.7	34.8	35.0	35.1	35.3	35.4	35.6	35.7	35.9	23
24	36.0	36.2	36.3	36.5	36.6	36.8	36.9	37.1	37.2	37.4	24
25	37.5	37.7	37.8	38.0	38.1	38.3	38.4	38.6	38.7	38.9	25
26	39.0	39.2	39.3	39.5	39.6	39.8	39.9	40.1	40.2	40.4	26
27	40.5	40.7	40.8	41.0	41.1	41.3	41.4	41.6	41.7	41.9	27
28	42.0	42.2	42.3	42.5	42.6	42.8	42.9	43.1	43.2	43.4	28
29	43.5	43.7	43.8	44.0	44.1	44.3	44.4	44.6	44.7	44.9	29
30	45.0	45.2	45.3	45.5	45.6	45.8	45.9	46.1	46.2	46.4	30
31	46.5	46.7	46.8	47.0	47.1	47.3	47.4	47.6	47.7	47.9	31
32	48.0	48.2	48.3	48.5	48.6	48.8	48.9	49.1	49.2	49.4	32
33	49.5	49.7	49.8	50.0	50.1	50.3	50.4	50.6	50.7	50.9	33
34	51.0	51.2	51.3	51.5	51.6	51.8	51.9	52.1	52.2	52.4	34
35	52.5	52.7	52.8	53.0	53.1	53.3	53.4	53.6	53.7	53.9	35
36	54.0	54.2	54.3	54.5	54.6	54.8	54.9	55.1	55.2	55.4	36
37	55.5	55.7	55.8	56.0	56.1	56.3	56.4	56.6	56.7	56.9	37
38	57.0	57.2	57.3	57.5	57.6	57.8	57.9	58.1	58.2	58.4	38
39	58.5	58.7	58.8	59.0	59.1	59.3	59.4	59.6	59.7	59.9	39
40	60.0	60.2	60.3	60.5	60.6	60.8	60.9	61.1	61.2	61.4	40

COGA PRINTOUT
FOR SEC. 24
(NOT SCANNED)



The paper in this book is made of 50% high grade rag stock with a WATER RESISTING surface sizing.

KEUFFEL & ESSER CO.



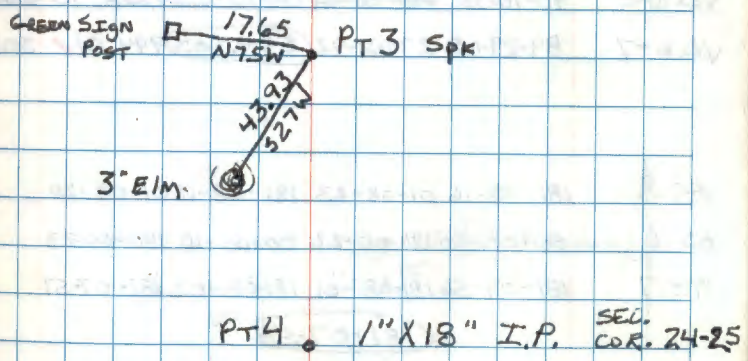
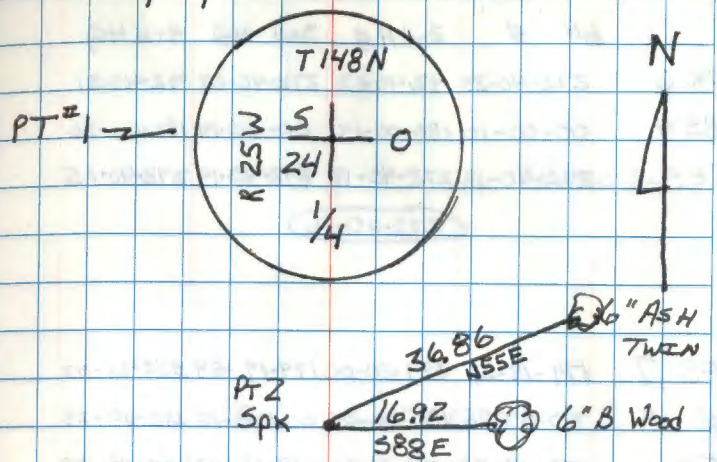
 A page from a notebook with a grid pattern. The page is numbered '3' in the top right corner. The grid consists of approximately 15 columns and 25 rows. There is very faint, illegible text visible through the grid, which appears to be bleed-through from the reverse side of the page.

	FT	M
	1st H ₉	2nd H ₉
FS 3	168-54-32	348-54-46
BS 1	00-00-20	180-00-34
PC 2	168-54-12	168-54-12
	(168-54-15)	
VA 2-1	88-19-52	271-40-10
VA 2-3	90-34-14	269-25-49
	(88-19-51) 15.41 ✓ 35.185	
	(90-34-13) 75.59 ✓ 205.920	
FS 4	182-27-15	2-27-33
BS 2	00-00-20	180-00-33
PC 3	182-26-55	182-27-00
	(182-26-54)	
FS 5	266-58-13	266-58-12
BS 3	00-00-23	00-00-24
PC 4	266-57-80	266-57-48
	(266-57-49)	
VA 4-3	89-26-56	270-33-18
VA 4-5	89-16-46	270-43-30
	(89-26-46) 54.15 ✓ 565.148	
	(89-16-38) 2936.08 ✓ 894.919	

R. MAIN CLEAR 70°
C. KRAUSE 7/10/91

WIB T2
RED I A EDM

4



PT 4. 1" X 18" I.P. SEC. COR. 24-25

FT = M

	1st H _Q	2nd H _Q	3rd H _Q	4th H _Q
FS 6	272-40-23	92-40-33	272-40-23	92-40-31
BS 4	00-00-10	180-00-15	00-00-14	180-00-26
PC 5	272-40-13	272-40-18	272-40-19	272-40-15

272-40-16

FS 7	179-19-55	359-20-00	179-19-54	359-20-02
BS 5	00-00-20	180-00-24	00-00-12	180-00-23
PC 6	179-19-35	179-19-36	179-19-42	179-19-39

179-19-38

VA 6-5	90-10-33	269-49-40	180-00-24	90-10-27	2638.70	✓	804.276
--------	----------	-----------	-----------	----------	---------	---	---------

VA 6-7	89-29-08	270-31-02	89-29-05	794.01	✓	302.977
--------	----------	-----------	----------	--------	---	---------

FS 8	181-08-16	01-08-23	181-08-12	01-08-20
BS 6	00-00-20	180-00-22	00-00-10	180-00-23
PC 7	181-07-56	181-08-01	181-08-02	181-07-57

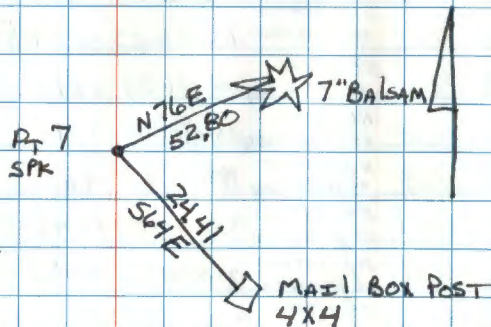
181-07-59

VA 7-8	89-52-18	270-07-52	1570.45	✓	478.676
--------	----------	-----------	---------	---	---------

89-52-13

PT 5 ○ SOUTH 1/4 SEC 24

PT 6 ○ 1" X 18" IP 1/4 SEC 24



PT 8 ○ N 1/4 S 24

FS 9 87-15-14 267-15-30 87-15-20 267-15-31
 BS 5 87-00-10 180-00-25 00-00-16 180-00-26
 TP 6 87-15-04 87-15-05 87-15-04 87-15-05

87-15-05

~~6-9~~
 FS 10 195-46-40 15-46-54 195-46-47 15-46-56
 BS 6 00-00-13 180-00-30 00-00-24 180-00-33
 TP 9 195-46-27 195-46-24 195-46-23 195-46-23

195-46-24

89-33-50

VA 9-6 89-33-40 270-26-00 346.833 ✓ 105.715 M
 VA 9-10 90-44-17 269-15-25 74.060 ✓ 22.573 M

90-44-26

	HD	VD	FT	M	
FS 100	SW corner of pole shed	05-05-25	88-57-55	37.22 ✓	11.345 M
FS 101	SE corner of chicken coop	136-06-57	TAPE	11.15	
FS 102	NE corner of chicken coop	181-23-50	TAPE	5.77	
FS 103	NW corner of chicken coop	192-01-27	TAPE	19.83	
FS 104	NW corner of pole shed	334-01-57	88-42-30	29.475 ✓	8.984 M
FS 105	NE corner of pole shed	330-57-28	89-52-4°	54.680 ✓	16.666 M
FS 106	SE corner of pole shed	349-46-04	89-34-50	59.385 ✓	18.101 M

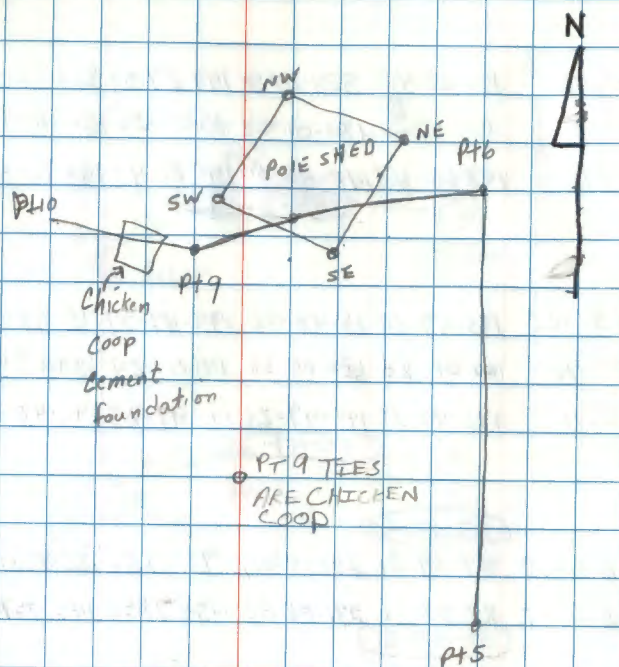
BS 6

TP 9

R. MAIN
 C. KRAUGE
 G. BRAMA

7/24/91 CLEAR 70°

WEB T-2 6
 EDM



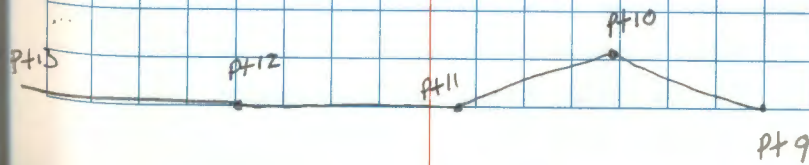
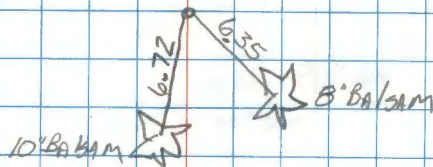
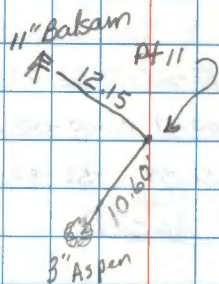
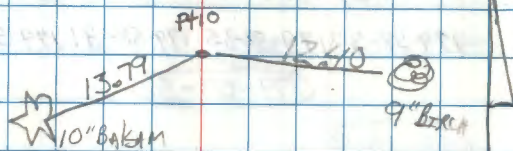
FS 11	148-27-42	328-27-58	148-27-39	328-27-54
BS 9	00-00- 24 ⁵⁴	180-01-08	00-00-56	180-01-17
TA 10	148-26-48	148-26-50	148-26-43	148-26-37
	<u>148-26-45</u>			

FS 12	195-47-50	15-48-02	195-47-57	15-48-08
BS 10	00-00-20	180-00-36	00-00-29	180-00-40
TA 11	195-47-30	195-47-26	195-47-28	195-47-28
	<u>195-47-28</u>			

	<u>87-19-40</u>			
VA 11-10	87-19-36	272-40-17	75.085	√22.886M
VA 11-12	88-53-16	271-06-33	484.735	√147.747M
	<u>88-53-21</u>			

FS 13	180-04-44	00-04-53	180 04 57	00-05-00
BS 11	00-00-12	180-00-26	00-00-26	180 00 39
TA 12	.32	.27	.31	04-31

180-04-30



FS 14 179-59-07 359-59-20 179-59-04 359-59-20

BS 12 00-00-37 180-00-45 00-00-33 180-00-48

TP 13 179-58-30 179-58-35 179-58-31 179-58-32

179-58-32

88-28-19

VΔ 13-12 88-28-11 271-31-32 347.310 / 105.861M

VΔ 13-14 90-19-29 269-40-20 1163.490 / 354.631M

90-19-34

FS 15 177-52-48 357-52-55 177-52-40 357-52-50

BS 13 00-00-15 180-00-11 00-00-00 180-00-11

TP 14 -52-33 -52-44 -52-40 52-39

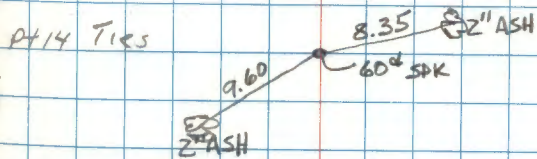
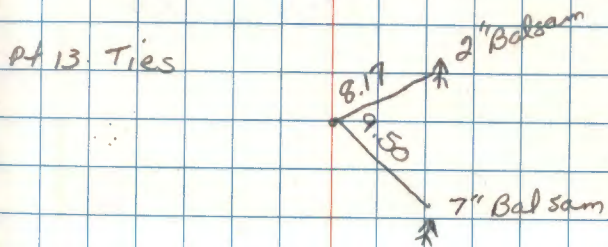
177-52-39

VΔ 14-15 90-02-10 269-57-35 160.490 / 48.917M

90-02-17



PT13 is a 1" iron pipe marking the CE 1/6 sec 24. Iron is set 3" above ground.



PT15 is a U.S.F.S. galv. monument with brass cap marking the west 1/4 of sec 24

REST OF BOOK
IS EMPTY