

CORNER
RESTORATION
T148N R25W



MINING
TRANSIT BOOK

No. 384

BOOK # 4

MINING TRANSIT BOOK
No. 384

BOOK #4

USFS

INDEX

T148N R25W 5th P.M.

						35
2	6	5	4	3	2	1
	8	13				
	7	8	9*	10	11	12
			15			
			25			
	18	17	16	15	14	36 13
						18
				7	6	16 23
						21 17 19 24
	19	20	33	21	22	22 20 18 24
						1
2	30	29	28	27	26	25
3						
4	31	32	33	34	35	36
5	10					12 11 26

Colored numbers refer to page
 on which notes for that corner
 may be found

North

Affidavit

S-20

East 1/4 Sec. 26

Notes of Co. Surveyor Lloyd Johnson 1929
 Iron monument (Found in place 1" iron pipe
 Cedar 10" N40E 20.8' (Now a dead cedar w/
 scribe "1/16" 1 BT" visible N54 1/2 E 20.8')
 Ash 8" S22E 33.0' (Now an Ash 11" w/ scribe
 grown over S19E 33.0')

7/17/61 RHM

Also found a squared scribed cedar post w/ pipe
 Set a 2" inside dia. 5' Long gal. wrought
 iron pipe filled w/ concrete & capped w/
 a 3" dia. bronze tablet stamped:

T148N R25W

NE 1/4 S26

1961
PLS NO 3628

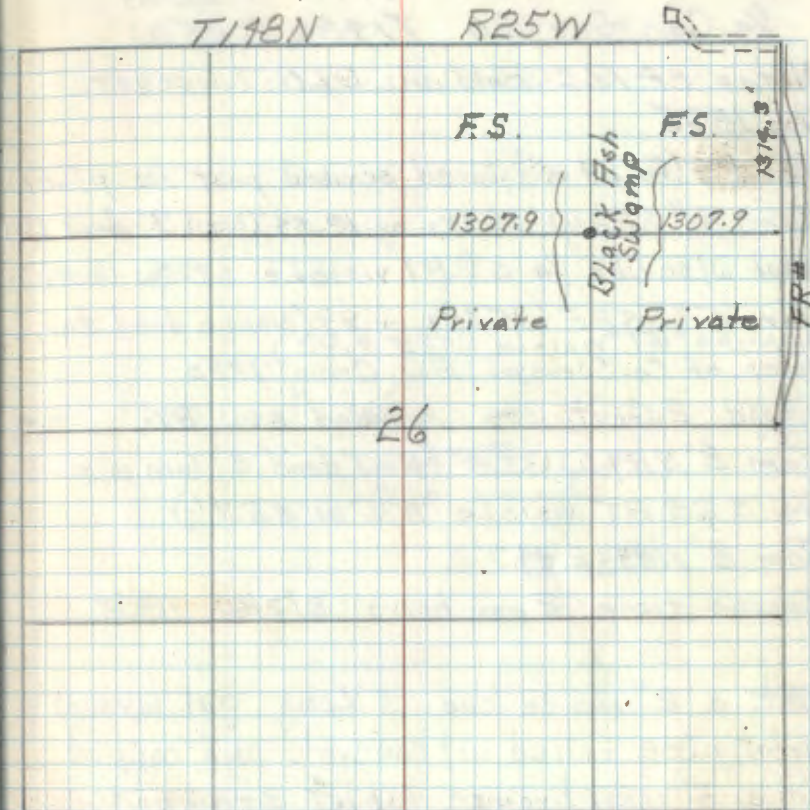
From which bears

Black Ash 9" N66° E 15.05' MKD NE 1/4 S26 BT

Black Ash 7" S44 1/2° W 10.7' MKD NE 1/4 S26 BT

9/18/61 R.H. McDonald

R9-5680-11 246



Placed F.S. Foster on a 9" Ash from which
 Cor. bears S66W 15.1'

12-7-61
OK
B. Anderson

2 11 Affidavit RIM
25 T148 R26W

1/4 Cor. Sec. 30 T148N R25W

Notes of B.C. Baldwin G.L.O. Surveyor
in 1875

Post - (Found a squared scribed post in place)

Tam. 4" S22W 19 LKs or 12.54' (Now 2" dead Tam.
stub w/ scribe 1/4 S BT visible S22W 12.54')

Tam 5" S52E 15 LKs or 9.9' (Now a dead tam.
w/ scribe BT visible S52E 9.9')

Notes of Co. Surveyor B.C. Craig 1920

Found 2 Govt. Bts marked now Bts

Tam 8" N84W 35.8' (Now dead 8" Tam w/ scribe

1/4 S 25 BT visible N76W 35.8')

Tam 8" N84 1/2 E 44.7'

Search time 2 man hours 8/2/61 RHM.

Set a 2" inside dia. 5' Long gal. wrought
iron pipe filled w/ concrete and capped
w/ a 3" dia. bronze tablet stamped:-

T148N
R26W R25W
1/4
S25 | S30 — (S30 | S25)
1961
RLS 1961 3628

Tamarack 8" N67E 27.96' MKD 1/4 S 30 BT

Tamarack 8" S21E 18.5' MKD 1/4 S 30 BT

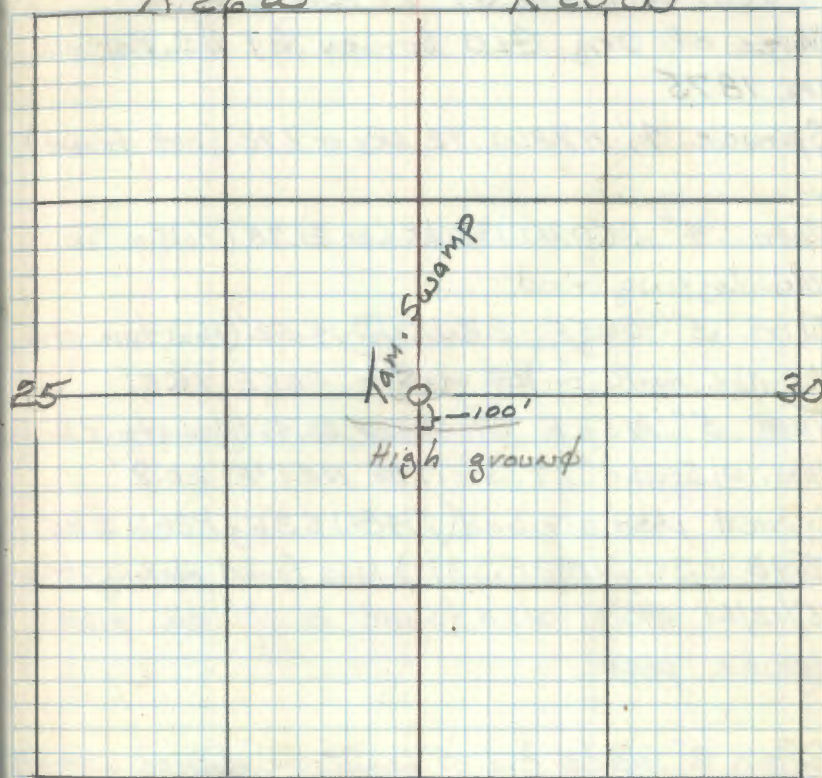
Tamarack 6" N50W 26.3' MKD 1/4 S 25 BT

Dec. 18, 1961 RHM Donald

T148N R9-5680-11 844

R26W

R25W



1-5-62
D.K.
P.D. Walker
(No point on 2 blocks)

3

Affidavit RHM

V-1 25-36 T148N R26W

Sec. Cor. 30-31 T148N R25W

Notes of Orig. GLO Survey by B.C. Baldwin
in 1875

Spruce 4" N73W 12 LKs or 7.92' (Not Found)

Tam. 4" S50W 33 LKs or 21.78' (Falls in
old logging road)Tam. 5" S65E 22 LKs or 14.52' (New tam. stump
w/ scribe marks partly visible S65E 13.5')

Tam 5" N52E 31 LKs or 20.46' (New stp. & Winder)

Tam. w/ scribe "IT" visible N52°E 20.2'

Squared post scribed (T148N S36, R26W S25
T148 S30, NR25 S31) was found marking corner
5/12/61 RHM also found a 1 1/2" dia pipe
beside post.Set a 2" inside dia. 5' long galvanized wrought
iron pipe filled w/ concrete & capped w/ a 3"
dia. bronze tablet stamped:T148N
R26W R25W
S25 S30
S36 S31
1961
RLS No 3628

Marked new B.T.s →

1-5-62

OK

R. A. Volden

(blazes not painted)

T148N R9-5680-11 916

25 R26W R25W 30

Balsam ridge
200'
Blk. Spruce
Swamp

36

31

Found 2 FS. Location markers - on 4" Blk spruce
N59°E 18.6 & 4" Blk spruce N19°W 23.6'

Tamarack 5" S8 1/2° W 12.05' MKD S 36 BT

" 4" S45° E 49.55' MKD S 31 BT

" 5" N29° E 33.0 MKD S 30 BT

" 4" N27° W 26.6 MKD X BT

Dec. 18, 1961 RHM [Signature]

4 X-1 Affidavit RNM

36 T148N R26W
1/4 Cor. Sec 31 " R25W

Notes of Orig. GLO Survey by B.C. Baldwin
in 1875

Tam. 6" S27E 25 LKs or 16.5' (Now tam. stp.
partly decayed S27°E 16.5

Tam 7" S89W 19 LKs or 12.54 (Now stp's windfall
mostly decayed S89°W 12.54

Found a Squared scribed post marking cor.

Found (8" Blk spruce scribed "1/4 S31 BT"

S65E 37.8') 5-12-61 RHM

Found

Set a 2" inside dia. 5' Long galvanized
wrought iron pipe filled with concrete and
capped with a 3" dia. bronze tablet stamped

T148N
R26W R25W

1/4
S36 | S31

1961
RLS NO 3628

From which bears:

Black spruce 6" N73 1/2°W 42.3' MKD 1/4 S36 BT

Tamarack 5" N39°E 43.4' MKD 1/4 S31 BT

Tamarack 7" S41 1/2°W 11.5' MKD 1/4 S36 BT

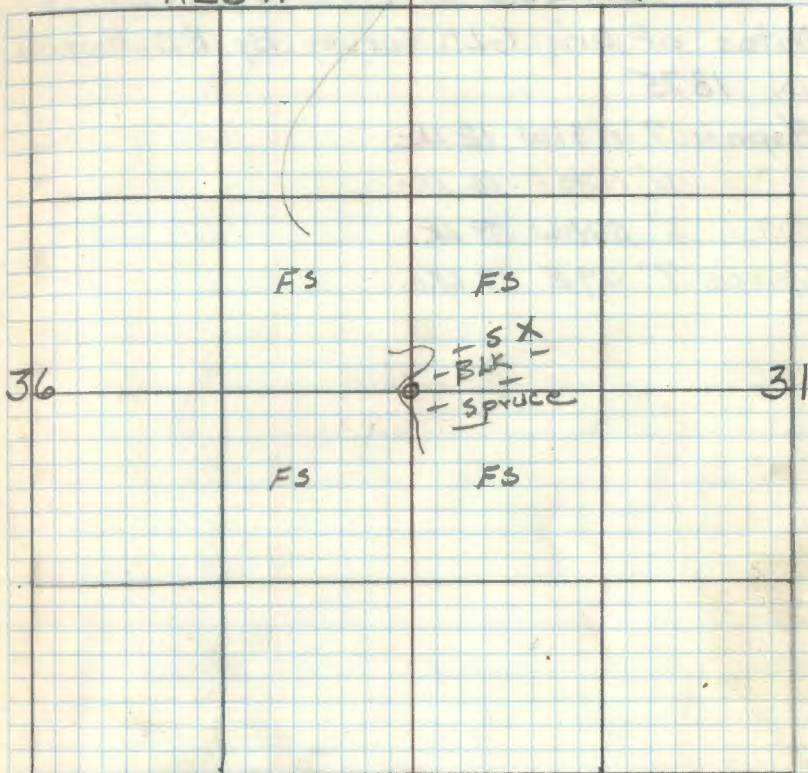
Dec. 18, 1961 R.H. McDonald

T148N

R9-5680-11 9M

R26W

R25W



Found FS location poster on a 8" Blk spruce
S17°W 13.7' put up in 1956 by V.S., HS & J.V.B.

1-5-62
OK

P.A. Walker
(Changes not printed)

5

Z-1

36 T198NR26 1 T197-26

Town Cor. Sec 31 T198NR25 6 T197-25

Notes of Orig. GLO Survey By B.C. Baldwin
in 1875

Aspen 7" N 91 W 12 Lks.

" 6" N 30 E 10 Lks.

" 6" S 78 W 38 Lks.

Spruce 7" S 7 E 19 Lks.

West 1/4 Sec 19-23

Notes of Co. Surveyor P.C. Warner in
1928 on file in Itasca Co. Courthouse,
Balsam 10° N 5° W 27.7' (Now Balsam str. mostly
decayed North 22.7')
Maple 8° N 40° W 26.6' (Not Found)

Iron Mon. (Found a 1" square iron pin under
old fence line) 7-28-61 RHM

Set a 6" dia. 5' long cylindrical concrete
monument capped w/ a 3" dia. bronze tablet
stamped:-

T198N R25W

W 1/4 S 14

S 23

1961

RLS NO 3628

From which bears:-

White pine 17° N 91° W 66.1' MKO "BT"
Rock 4' x 3' projecting 1' above ground MKO
"X" on highest pt. N 49° E 17.9'

6/13/61 RHM Donald

		T198N		R25W	
		1168.1'	1168.1'	1384.8'	1384.8'
Road	Field Private		Pasture Private		F.S.
					F.S.
					F.S.
					F.S.
					F.S.

Placed F.S. Metal Location poster on
the 17" white pine BT

17-12-61
OK
B. O. Allen

East 1/16 Cor. Sec 15-22

Notes of Co. Surveyor P.C. Warner Aug. 1921

Recorded plat in Itasca Co. Courthouse

Iron Monument - (Found in place) E 1/16 S22

Birch 8" S73E 5.1' (Now 11" Birch S62E

5.1' w/ scribe "BT" visible)

Balsam 8" N95W 12.5' (Now 11" Balsam N34W

w/ scribe grown over) 12.5')

Set a 2" inside dia. 5' long galvanized pipe

filled w/ concrete & capped w/ a 3" dia.

Bronze tablet stamped T148N R25W

E 1/16 S15
S22
1961

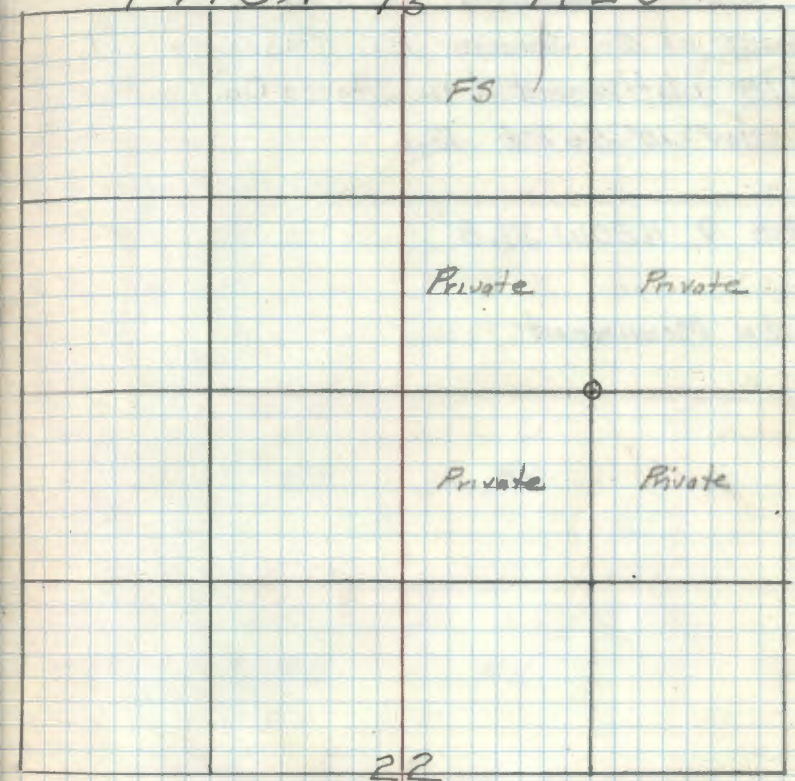
RLS NO 3628

W. Spruce 17" S68E 52.55 MKD E 1/16 S22 BT

Maple 23" S31W 80.1 MKD BT

6/14/61 RRM Donald

T148N 15 R.25W



Placed F.S. metal location poster on a 16" Balsam south 5.0'

12-12-61
OK
R.A. Walker

8

D-5

South $\frac{1}{16}$ Cor. Sec's 5-6

Notes of Co. Surveyor P.C. Warner July
1918 plat recorded in Itasca Co. Courthouse
Cedar $10' S 67^\circ E 13.6'$

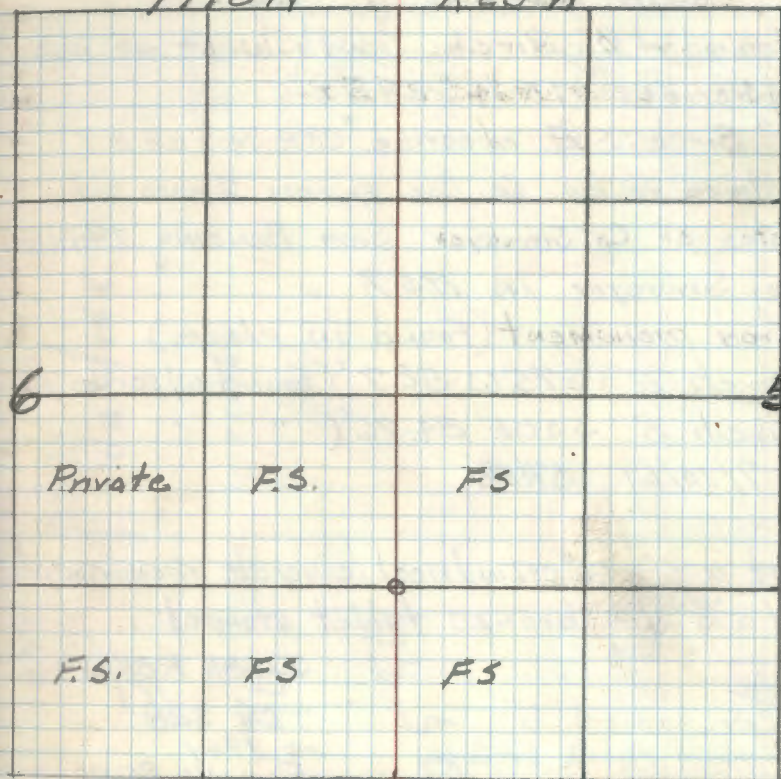
Ash 9 NBOW 31.8'

Iron Monument

R 9-5680-11 He

T 178 N

R 25 W



9

Affidavit RHM

T-11

Center 1/4 S 28

Found - 6" Birch, South West of cor.
w/ scribe "CTR 1/4 S 28 BT"

8" Birch SE w/ scribe "CTR 1/4 S 28 BT"

believe to be Co. Cor. approx. 3 years old.

Notes of Co. Surveyor Sam Benzing Itasca
Co. Surveyor in 1957

Iron monument (found in place)

Birch 5" S 75.6 W 52.7' (found w/ scribe plain)

Birch 5" S 50 E 84.76' (" " " ")

7/10/61 RHM.

Set a 6" x 26" cylindrical concrete mon. capped
w/ a 3" dia. bronze tablet stamped:

Note

Cor. buried 6"
under road surface

T148N R25W

C 1/4 S 28

1961

PLS NO 3628

From which bears the
B.T.s of 1957 Co. survey

Birch 6" S 68 W 52.7' MKD CTR 1/4 S 28 BT

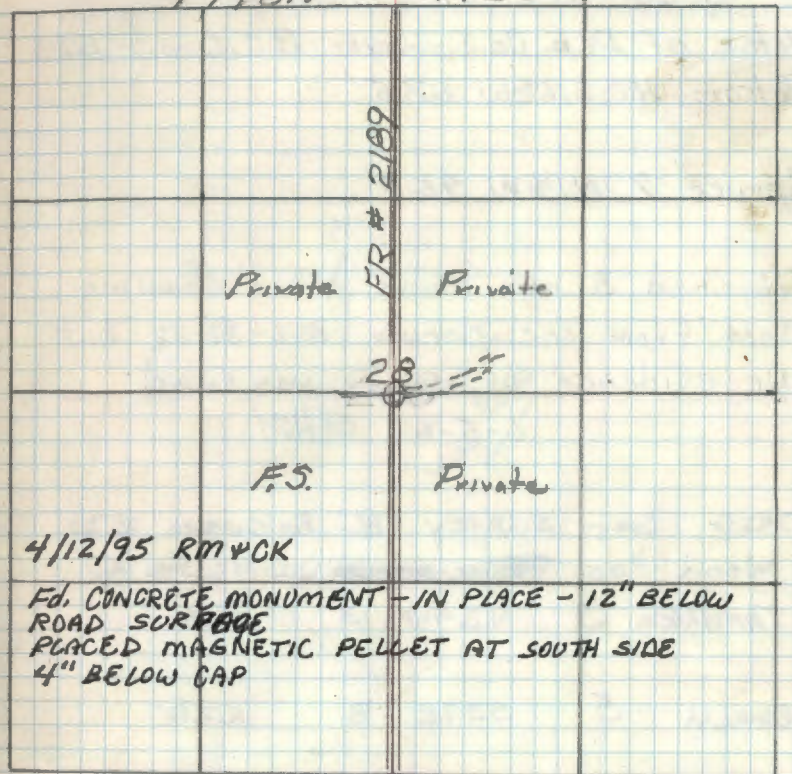
Birch 8" S 56 E 84.76' " " " " "

7/16/61 R.H. McDonald

OK
7/16/61

T148N

R25W

Placed F.S. metal location post on
the 6" Birch B.T. from which cor. bears
N 68 E 52.6'BIRCH 11 S 68 W - 53.01' SPK. + TAG
SCAR FACING COR.BIRCH 10 S 56 E - 85.26' SCRIBE VISIBLE SPK. + TAG
SCAR FACING COR.

NEW BT.

W. OAK 9 S 32 W - 65.67' MKD C 1/4 S 28 BT

8' STEEL SIGN POST DUE WEST 28.55'

Center 1/4 S 28

Found - 6" Birch, South West of cor.
w/ scribe "CTR 1/4 S 28 BT"

8" Birch SE w/ scribe "CTR 1/4 S 28 BT"

believe to be Co. Cor. approx 3 years old.

Notes of C. S. Benzling Itasca

Co. Survey T-11 Dec. 1995
Iron (place)
Birch (und w/ scribe plain)
Birch " "

7/10/61 Set a 6" iron mon. capped
w/ a 3" cap stamped:

Note
Cor. below
under
48N R25W
528
1961
S NO 3628

From which are the
B.T.s of 1957 Co. survey
Birch 6" S68W 527' MKD CTR 1/4 S 28 BT
Birch 8" S56E 89.76 " " " " "

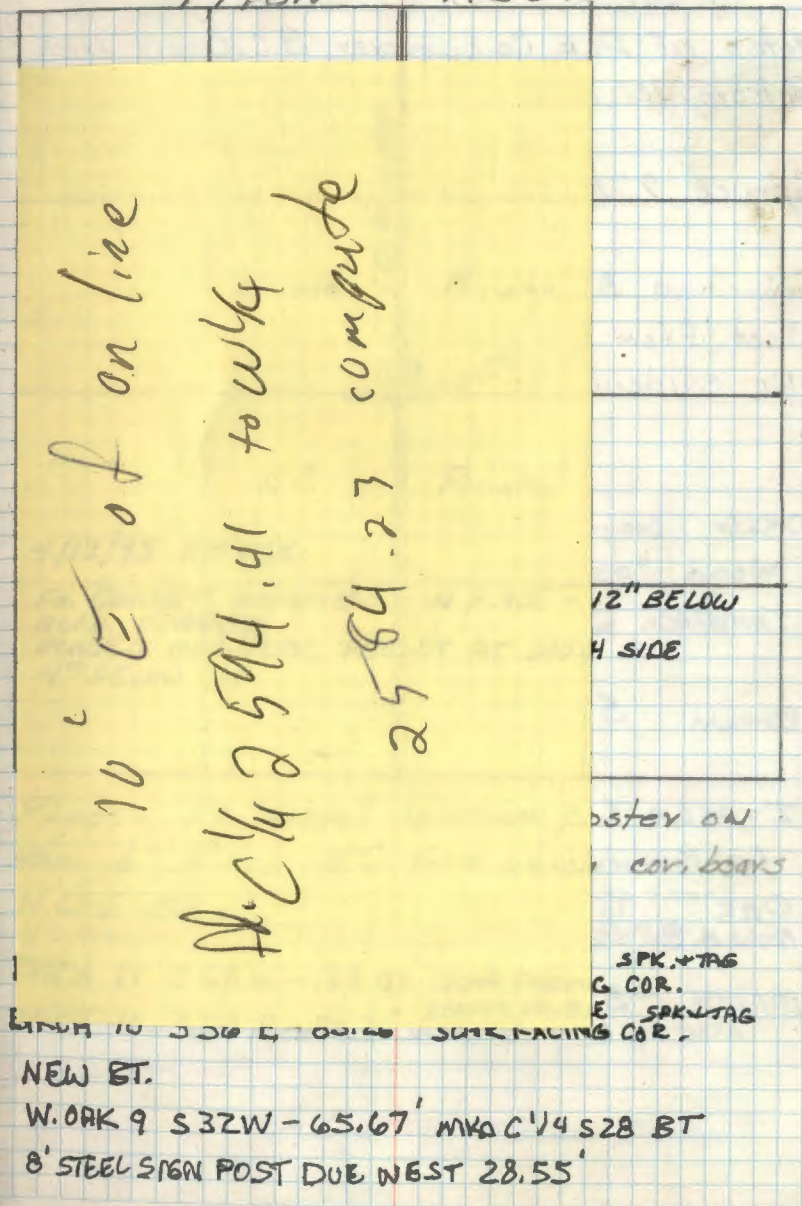
7/16/61 R.H. McDonald

all from
7/16/61

According to
Bob Koranen this
may be in the
wrong location
MJ

T198N

R25W



10' E of on line
N.C. 1/4 2594.41 to W 1/4
2584.27 compute

NEW BT.
W. OAK 9 S32W - 65.67' MKD C 1/4 S 28 BT
8' STEEL SIGN POST DUE WEST 28.55'

12" BELOW
4 SIDE
POST ON
COR. BOARDS
SPK. TAG
G. COR.
E. SPK. TAG
SURVEYING COR.

10

Z-3

Sec 6 T147R25

1/4 Cor. Sec. 31 T148R25

Notes of Dep. Co. Surveyor B.C. Craig 1920

Balsam 12' S16 $\frac{1}{2}$ W 67.5'Spruce 7" N1 $\frac{1}{2}$ W 95.3'

Searched 3 man hours after chaining
West from sec. corner 5-6-31-32 but
no evidence of corner was found

6-5-62 RHM

ORIG GOVT SURVEY BC. BALDWIN 1875

Wood Post ~~was~~ WITNESSED BY

TAMARACK 5 N29W 13 8.58'

BIRCH 5 S37E 8 5.28'

ITASCA COUNTY

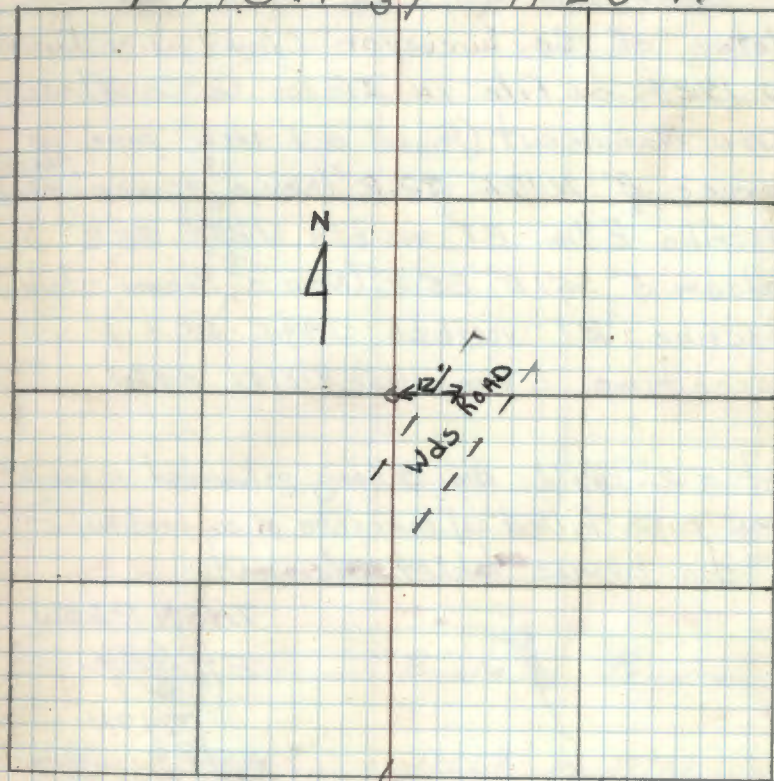
CO MONUMENT WITNESSED BY

OAK 6" S60E 24.35
NOW A 8" ELM S53E 24.87' TO NAIL

Maple 3" N38W 23.05
NOW 6" N34W 23.43' TO NAIL

R 9-5680-11 H&E

T148N 31 R25W



R MAIN 1987

Fd CO MONUMENT IN good condition.
MONUMENT IS 1" IRON PIPE WITH 2" ALUMINUM
CAP 1 FOOT ABOVE GROUND. MONUMENT IS 12' FROM
WOODS ROAD. Fd NO ORIGINAL OR 1920 BTs
NEW BT
W. OAK 6" S4E 37.10' TO NAIL BLAZED
1/4 56 BT

East 1/16 Sec. 36 Town Line

Notes of Co. Surveyor Lloyd W. Johnson
in 1924 on file in Itasca Co. Courthouse

Iron Monument (Found a 1" iron pipe in)

Spruce 8" N17E 32.2' (Now a ^{13"} spruce stub
w/ scribe "E 1/16 BT" visible N25E 32.2')Balsam 5" S51E 25.3' (Now a ^{8"} Balsam stub
w/ scribe "BT" visible S44E 25.3')

Search time 2 man hours 8/8/61 RHM

Set a 2" inside dia. 5' Long galvanized wrought
iron pipe filled w/ concrete & capped w/ a
3" dia. bronze tablet stamped:-

T148N R25W

E 1/16 S 36

T147N

RLS NO 3628

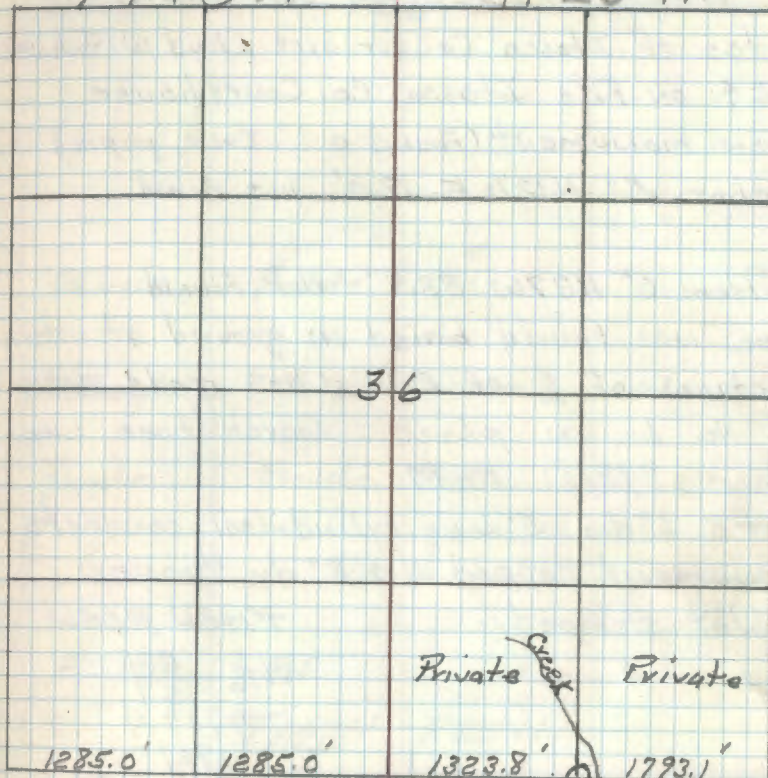
Ash 8" N28 1/2 E 18.15 MKD E 1/16 S 36 BT

Ash 9" N68 1/2 W 18.60' MKD E 1/16 S 36 BT

9/19/61 RHM Donald

T148N

R25W

12-21-61
O.K.

R.D. Wilder

Aug 1982 - corner is stamped incorrectly
Should only be for Sec 36, T148N, R25W

12

Affidavit RHM

Z-22

West $\frac{1}{16}$ Section 36 Town LineNotes of Itasca Co. Surveyor Lloyd W. Johnson
1924 on File Itasca Co. Courthouse

Iron monument (Found a 1" Iron pipe)

Poplar 5" N12 $\frac{1}{2}$ E 12.0' not found

Balsam 6" N27W 33.8' Not found

Pipe was found buried in ground at inter-
section of $\frac{1}{2}$ of E-W & N-S roads. Believe
it to be in place. Search time 1 man
hour 8/8/61 RHMSet a 6" dia. 5' long cylindrical concrete
monument capped w/ a 3" dia. bronze
tablet stamped:-

T148N R25W

W $\frac{1}{16}$ S36

S1

T147N

1961

RLS NO 3628

From which bears.

Red Pine 13" N 75° W 38.9' MKD W $\frac{1}{16}$ S36 BT

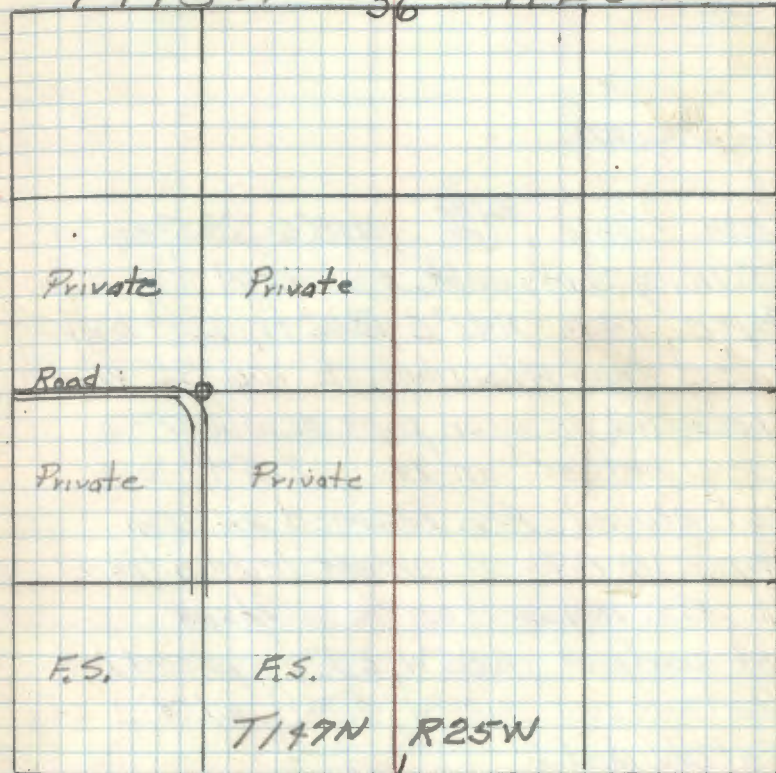
Cedar post 4"x4"x6.5' pent-a-treated w/

red top East 2.25'

8/17/61 R.H. McDonald

R9-5680-11 JH

T148N 36 R25W

Placed F.S. metal location poster on the
4"x4" Cedar post East12-7-61
OK

R.G. Wilson

T148N R25W E 1/16 5-8

Recovered:

Cedar stump, ^{fallen over} N18°E, 28.51 ft,
 scribing faintly visible, measurement from base blaze

Aspen, 14 in N42°E 18.02 ft, 12 ft high
 dead snag w/ scribing E 1/16 SS visible

recovered an iron pipe monument as
 described set in 1961, 2.5 ft out

of ground. Also recovered an iron
 pipe, 1 1/2 O.D. at ground level adjacent
 to F.S. monument on the south side

4x4 wood post, S85°W, 2.27 ft, painted red

steel sign post, N87°W, 4.74 ft, w/ 5x2 sign

Established:

B of G, 7 in, S12°W, 40.71 ft

scribed: E 1/16 S 8 BT

W. Spruce, 18 in, N45°W, 72.31 ft

scribed: E 1/16 S 5 BT

All measurements taken from 16d nails
 in the side of BT's.

T148N

R25W

60d nail in base blaze

60d nail in base blaze

60d nail in base blaze August 3, 1982

Cloudy, drizzle

60d nail in base blaze

P.C. or G. Kasenko

Aide -

See T148N R25W bk 3 pg 7

15

H-11

T148N R25W CS 1/16 Sec 9

G. Kosenko Recovery August 3, 1982

Recovered

~~Pine stump, N79°W~~Oak, 8 in, S04°E, 17.89 ft, ~~54-2 sign~~

blaze completely grown over

Steel sign post south, 7.80 ft, w/54-2 sign

4x4 cedar post north, 2.83 ft, painted red

4x4 cedar post east, 2.75 ft, painted red

Recovered iron pipe monument as described set in 1961, 1.5 out of the ground. Also recovered 1 1/2 in O.D. iron pipe adjacent to and on the south side of the F.S. monument, 3 inches above ground

Established:

aspen, 8 in, N23°W, 25.50 ft

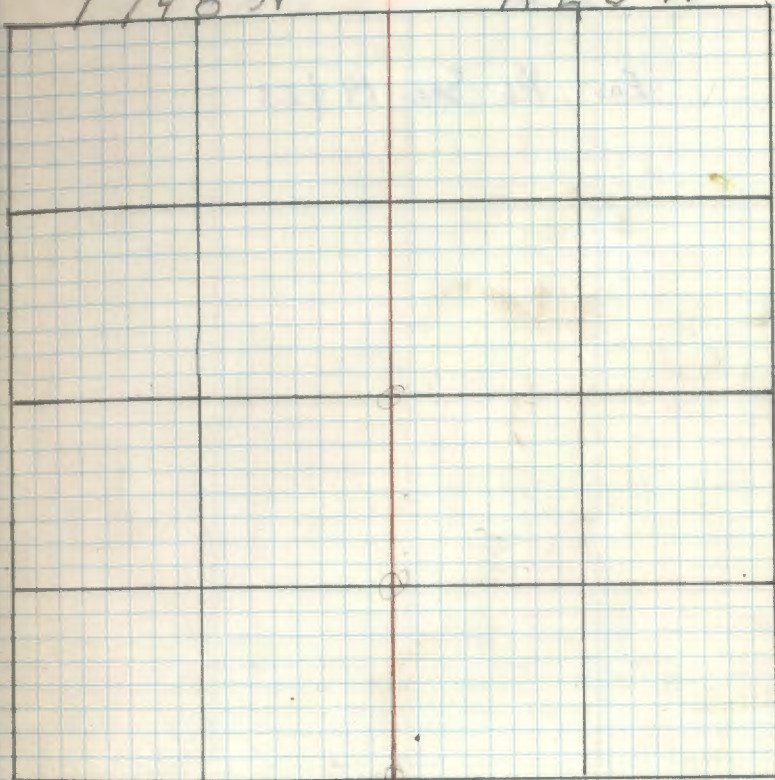
scr: CS 1/16 S9 BT

W. Birch, 7 in, N51°E, 15.40 ft,

scr: CS 1/16 S9 BT

T148N

R25W



All BT have a 60d spike in base blaze, and all measurements were taken from nails in the side of the tree

See T148N R25W bk 3 pg 23

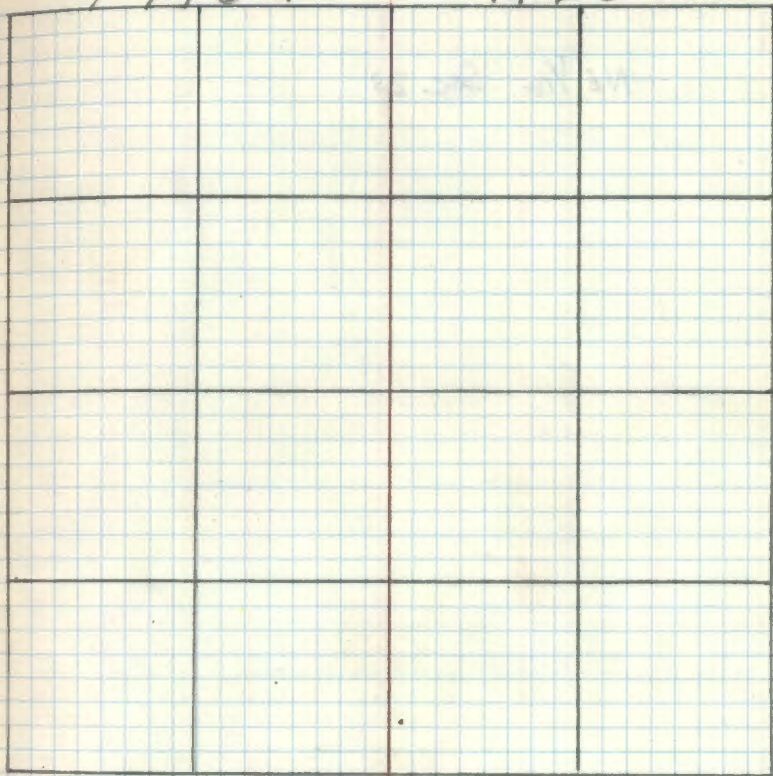
16

N-20

East 1/6 Sec 14 & 23

T 148 N

R 25 W



See T148N R25W bk 3 pg 75

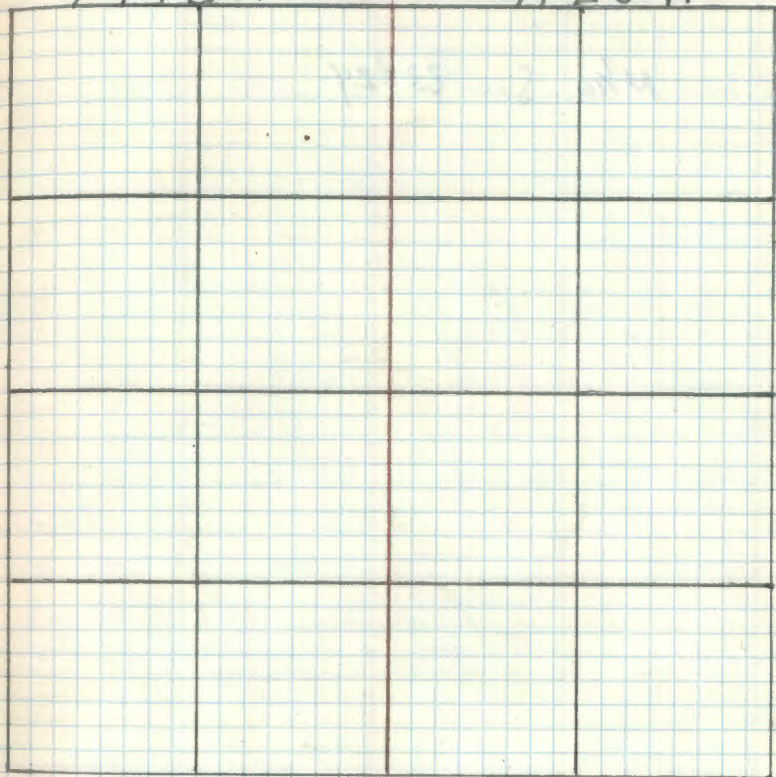
18

P-20

EE $\frac{1}{16}$ Sec 23

T148N

R25W



See T148N R25W bk 3 pg 23

0-21

N¹/₆ Sec 23 & 24

T148N

R25W

See T148N R25W BK 3 pg 76

T148N R25W C 1/4 Sec 23

recovered:

B of G, 12 in, N53°E, 34.06, blaze
 completely grown over, nail in side of tree
 Ash, 6 in, N24°E, 36.90 ft, blazes
 completely grown over, nail in side of tree
 W. Birch, 11 in, N43°W, 13.80 ft, scribing
 C 1/4 S23 BT visible but partly grown over
 Wood post, 4x4 in, east, 3.00 ft, painted red

steel sign post, north, 2.60 ft, w/ 54-2
 steel sign post, 577°W, 5.15 ft, 54.9 + 54.2
 recovered iron pipe monument as
 described set in 1961, 2.1 ft out of
 ground. Also recovered 1 inch square
 iron bar adjacent to and east of corner,
 2 in. above ground

Corner fence post adjacent to monument
 and south w/ fence line running north
 and west

T148N

R25W

60d spike			
60d spike			
60d spike			
nail in side of tree			

August 4, 1982
 Cloudy humid
 PC. P. G. Kasenko
 Aide - R. Maurer

See T148N R25W BK 3 pg 65

21

0-19

T148N R25W CN 1/16 Sec 23

Recovered:

Cedar, 12 in, N16°E, 33.35 ft, scribing faintly visible, tree is healthy, scr partly grown over.

Ash, 6 in, S58°W 27.94 ft, blize completely grown over, nail in side of tree

Rock, ^{see:} X, N05°E, 23.03 ft, 4 ft by 5 ft, 2 ft above ground w/X scribed on front

Steel sign post, south 4.14 ft w/54.9154.2

Recovered a concrete monument as described set in 1961, 2.0 ft above ground. Also recovered a 1/2 in diam iron pipe set by the county, .45 above the ground and adjacent to the Forest Service monument and south.

Corner is between 3 fence posts. Fence lines running north, south, west

T148N

R25W

60d spike in baseblize over.

60d spike in baseblize

edge of rock facing monument

August 4, 1992

ptly ably, in mid

PC to S. Kovato

Aide - R. Mourer

See T148N R25W 823 pg 66

T148N R25W CW 1/6 S23

recovered:

Pine stump N68°E, 58.35 ft, badly
rotted w/ Balsam fir, 6", growing out of it
Ash, 10 in N08°E, 82.38 ft, blaze
completely grown over, nail in side of tree
Elm, 11 in, S13°W, 60.46 ft, blaze
completely grown over, nail in side of tree
Metal sign post, S88°E, 4.20 ft, w/ 54-9 + 54-2

Recovered concrete monument as described
set in 1961, 1.9 feet above ground.
Did not recover iron pipe set by
the county

Monument is adjacent to a corner fence
post w/ barbed wire attached. Fence lines
running south, east and west.

T148N

R25W

60d spike

60d spike

60d spike

August 4, 1982
Cloudy, humid
Pr. to G. Kosenko
Aide - E. Maurer

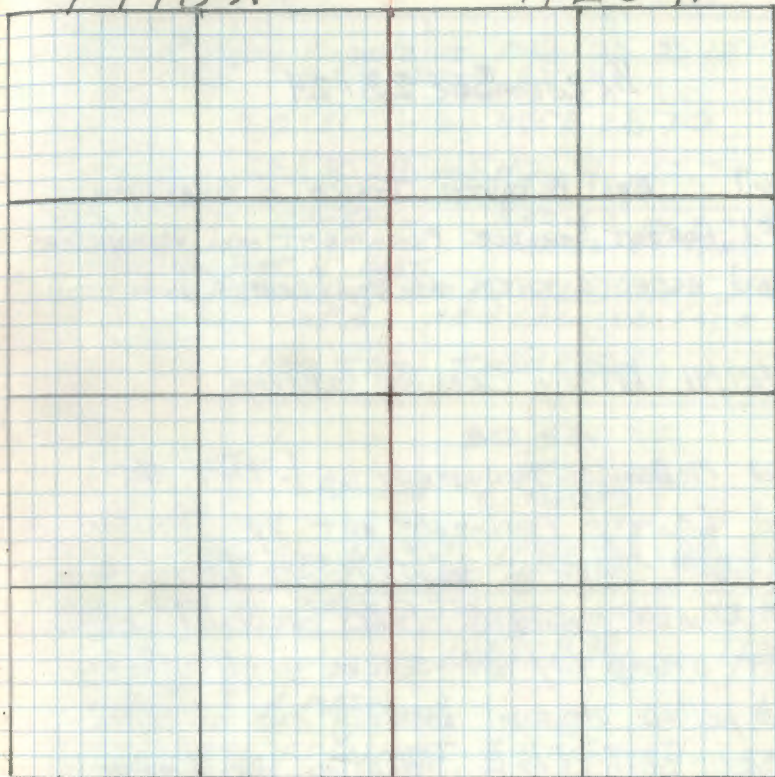
See T148N R25W bk 3 pg 67

N-21

Sec Cor 13, 14, 23 & 24

T 148 N

R 25 W



See: T148N R25W BK 1 pg 8

P-21

1/4 CORNER SEC 23/24

1967 EARL PELQUIN ITASCA CO SURVEYOR
 FD FOREST SERVICE MONUMENT AND WITNESSES
 AND ACCEPTS THEM AS LEGAL CORNER POSITION.

7/29/91 R MAIN CKRAUSE G. BRAMA

Fd McDonalds MONUMENT up 1.7 FT. Also
 fd COUNTY MONUMENT SET BY JOHNSON
 1" X 20" Laying down N35E, 7.5 FT FROM
 McDONALDS MONUMENT. FOUND ORIGINAL W. PINE
 BT STUMP /w/ BT SCRIBE STILL VISIBLE.
 WE PULLED ORIGINAL BEARING AND DISTANCE
 AND FALL N16E, 4.45 FT FROM McDONALDS
 MONUMENT. THIS NEW POSITION MATCHES
 OUR DASHED LINE FROM THE EAST USING
 THE 1926 BEARING ANGLES AND DISTANCES.
 Dug IN THIS AREA AND FOUND THE OLD HOLE
 FROM JOHNSONS 1926 IRON PIPE. MOVED
 McDONALDS MONUMENT TO THIS POSITION
 WHICH IS N16E 5.0 FT FROM 1961 POSITION.
 WE FD NO EVIDENCE OF COUNTY BAKAM B.TS.
 WITNESSED NEW POSITION /w/ McDONALDS

T 148 N

R 25 W

ROCK TIES MONUMENT NOW UP $\pm 12"$
 WITH 1926 IP ON NORTH SIDE

X ROCK 2.5 X 30 X 1/4 High N55E 28.70

X ROCK 3.5 X 30 X 1/4 High N36W 22.70

EIM 10' 12 FT SNAG 559W 14.80 TO
 CENTER OF TREE

STEEL SIGN POST 4' EAST
 DESTROYED, MAYERS RLS # ON BRASS CAP AND
 REPLACED W/ USFS. AND CHANGED DATE
 TO 1991
 PLACED SPK IN ORIG BT STP. T148N R25W

1/4
 B23/S24

1991
 RLS NO USFS

ORIG BT PINE STP N83W 11.85 FT. ROCKS
 PREVENTED US FROM PLACING MONUMENT @ 12.54 FT
 BUT 11.85 IS WHERE JOHNSONS PIPE HOLE
 WAS.

Robert R Main 7/29/91

4-01-2013 R. MAIN

8 FT STEEL SIGN POST 3 FT SOUTH. LINE
 TO STANDARD SOUTH

SEE: T148N R25W BK 1 pg 7

25

J-11

T148N R25W S 1/4 Sec. 9

recovered:

Oak 10 in, N73°E, 48.94 ft, blazes
completely grown over. Nail in side of tree

Oak 12 in, N08°W, 104.38 ft, blazes
completely grown over. Nail in side of tree

Aspen 7 in, S08°E, 5.07 ft, scribed
1/4 S 19 BT. Scribing partially grown over.
recovered iron pipe monument as described
set in 1961, 1.9 ft out of the ground.
Did not recover the county iron pipe.

Post 4x4 in, N87°W, 3.25 ft, w/542 + 544

Steel sign post, N04°W, 4.65 ft, w/542 + 549

Pine stump, S65°E, 6.57, badly burned,
measured to the face of the stump

T148N

R25W

60d spike in base blaze

60d spike in base blaze

60d spike in base blaze
nail in side of tree

August 4, 1982

Cloudy, humid

Pt. of G. Kasenko

Aide - R. Mourer

See Bk1 pg 68 T148N R25W

Z-25

Standard Township Corner
 Twp 147 North & Twp 148 North
 Range 25 West (on Third Guide
 Meridian)

Nov 18, 1982, Ken Whitehorn, RLS, and R. Oleson, USFS,
 find a 1 inch iron pipe, approximately 4
 inches below the Rd (MN Hwy #6) used
 as a traverse point. Also found:

R. Pipe 13.3 inch, S78°W 156.40 ft with
 blaze and scribe visible

R. Pipe 16.6 inch N76°W 164.50 ft with
 blaze & scribe visible

Aug 9, 1982 Lowered 1 in x 15 inch iron pipe and set
 a 2 in x 24 inch galv iron pipe (over) with
 a 3 in brass tablet flush with Rd surface
 (MN Hwy #6) 1.3 ft east of E 10.5 ft west
 of edge of mat and 130 ft south of
 E to driveway west. Tablet is stamped

T147N
 R25W
 S.36
 S.1
 1982
 RLS14677

BT's painted red with
 54-3 attached.

T148

R. Pipe 16.6 in
 N76°W 164.50

Lowered find 1" x 15"
 IP

R25W

S.36

S.1

1982

RLS14677

R. Pipe 13.3 in
 S78°W 156.40 ft

Set 2" x 24"
 Galv IP
 3" B Cap
 Flush with
 top of road
 10' E of E
 10.5' W of E
 573
 130' South
 of E Drive
 west

Certificate filed 4-15-83
 Doc # 336853 (B)

See T147N, Rge 25W, BK 2, pp 2

27 QD-1

MC. SEC. 6 T148 R25 South BANK 4 TOWN
Lk.

Cont. from Book 2 Pg. 18

7-12-83 B. AUSK + G. ROBERTSON
CORNER should be fixed up,
its out in WATER, both Birch
TREES ARE DEAD

1-16-83 B. AUSK G. ROBERTSON

Established

Established

Twin Birch 13" S73°E 52.59' "MC 56 B1"

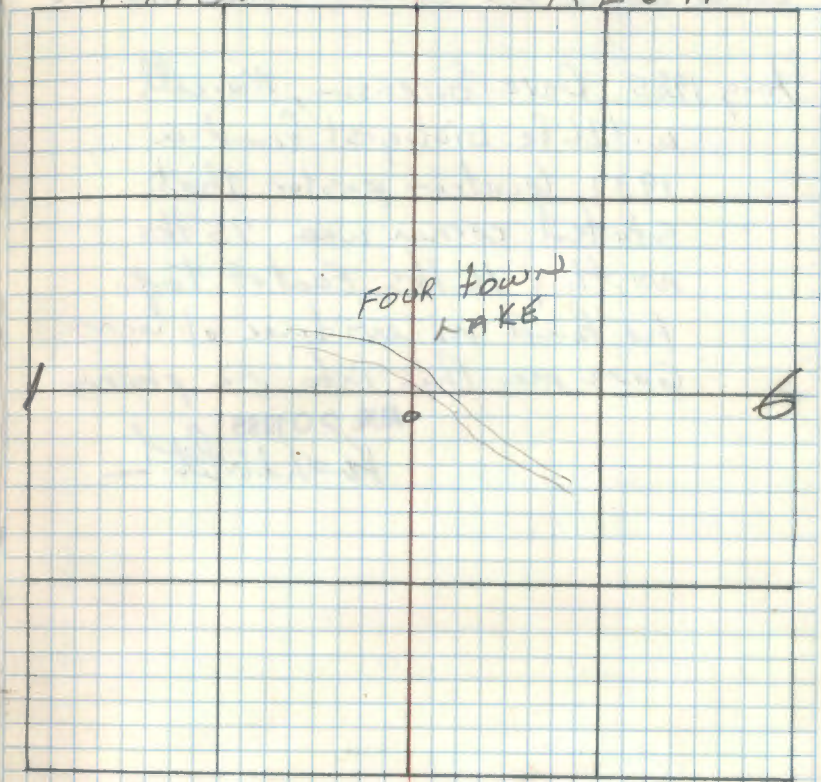
MEASURED to a 16d NAIL SWSIDE TREE 60d SPIKE in
Bottom BLAZE

w Birch 9" S16°W 61.75' "MC 51 B1"

MEASURED to a 16d NAIL EAST SIDE TREE 60d SPIKE
in Bottom BLAZE

T. 148 N

R 25 W



28

Center South $\frac{1}{16}$ Corner of Section 13

Aug 1985 Dave Sorenson, Marcell
wildlife biologist found a
1937 location-poster that
stated corner was 75 lks
north & 16 lks East of Tag.
he found no evidence of corner.
Gave me this info via phone

AUG. 20 1985

K. H. White

T148N

R25W

West 1/16 Sec 23-26

Cont'd from BK 3 Pg 69

Jan 9, 1985 G. Robertson & B. Ausk

Found concrete monument, up 2.0 ft.

Adjacent to old fence corner. Stamped
as shown in BK 3.

From which:

W. Birch, 7.1 in., $N65^\circ E$, 29.18 ft to a 1/6d nail
in S face, double blazed, scribed "W 1/16 S 23 BT""X" Rock, 1x2, $S 10^\circ W$, 20.08 ft to center of "X"W. Birch, 8.7 in., $N 20^\circ W$, 52.58 ft. to a 1/6d nail
in W face, double blazed, scribed "W 1/16 S 23 BT"

Corsonite Boundary Marker, North, 3.0 ft w/54-20+

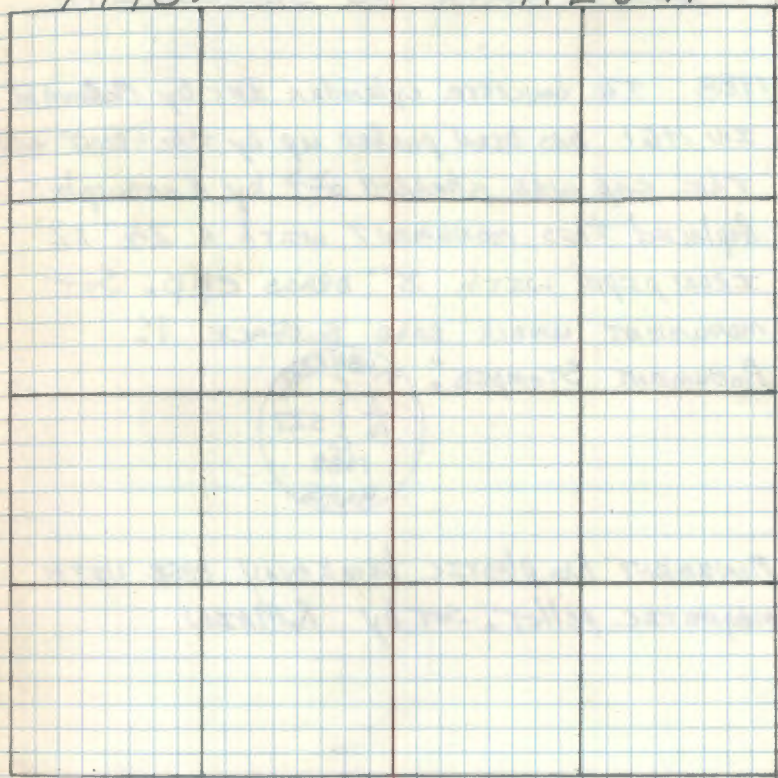
- LSM-130

4x4 wood post, East, 3.0 ft with new 54-2

All BT's have 60d spike & red paint

T148N

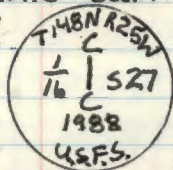
R25W



CENTER SOUTH $\frac{1}{16}$ SECTION 27

1988 The concrete cylinder set by McDonald in 1961 has been pushed up by the frost and the cap was sheared off by a snowplow. Replaced this monument with a $2\frac{1}{2}$ " x 2" iron pipe with 3" brass cap. Set monument under road surface $\frac{1}{2}$ ".

MONUMENT STAMPED:



MONUMENT HAS PLASTIC BREAKAWAY BASE WITH MAGNETIC PELLET. SET BY R. MAIN

T148N

R25W

31

CONT FROM BK #1 Pg 45

SECTION CORNER 15-16-21-22

SPRUCE 18" N49E

REA Pole 11"

T148N

R25W



32

O-13 NORTH 1/16 BET SECTION 21-22

1921 P.C. WARNER

PLAT OF SEC 22 SUBDIVISION

SET I.P. AND WITNESSED BY

BIRCH 10" S25W 90.5

BIRCH STP 8" S70E 40.0

T 148 N

R 25 W

13/4.7

13/4.7

13/3.5

13/3.5

33

OP-9 MEANDER CORNER BET SEC 20-21
SOUTH SHORE LITTLE SPRING LAKE

1968 EARL PELLOUEN ITASCA Co.
IN P^g TO LOOSE LEAF FIELD BK. SET
A COUNTY MONUMENT AND WITNESSED
BY.

CEDAR 11" S80W 18.02

ELM 4" S25E 38.45

12/11/90 R. MAIN

FD CO BTS BUT MONUMENT WAS BELOW
THE ICE. ELM BT IS AN ASH. ON 12/17/90
I FD THE CO I.P. LAYING DOWN AND 4" UNDER
THE ICE RESET I.P. FROM COUNTY BTS
AND WITNESSED FROM.

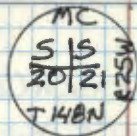
CO CEDAR (TWIN) 13" S78W 18.20 TO SPIKE
CO ASH 6" S22E 38.65 TO SPIKE DEAD TOP
SOUTH SHORE LAKE
NEW ASH 9" S35W 30.00 TO SPRING MUD/AC S20 BT

DROVE DOWN 8 FT SIGN POST NEXT TO I.P. AND
WIRED TOGETHER. I.P. SIGN POST UP 4" ± 30 FT SOUTH
OF WATER'S EDGE.

T148N

R25W

CAP STAMPED:



34

0-22 NORTHWEST ONE SIXTEENTH SEC 24

1926 L.W. JOHNSON ITASCA CO SURVEYOR

PLAT OF SECTION 24 SUBDIVISION

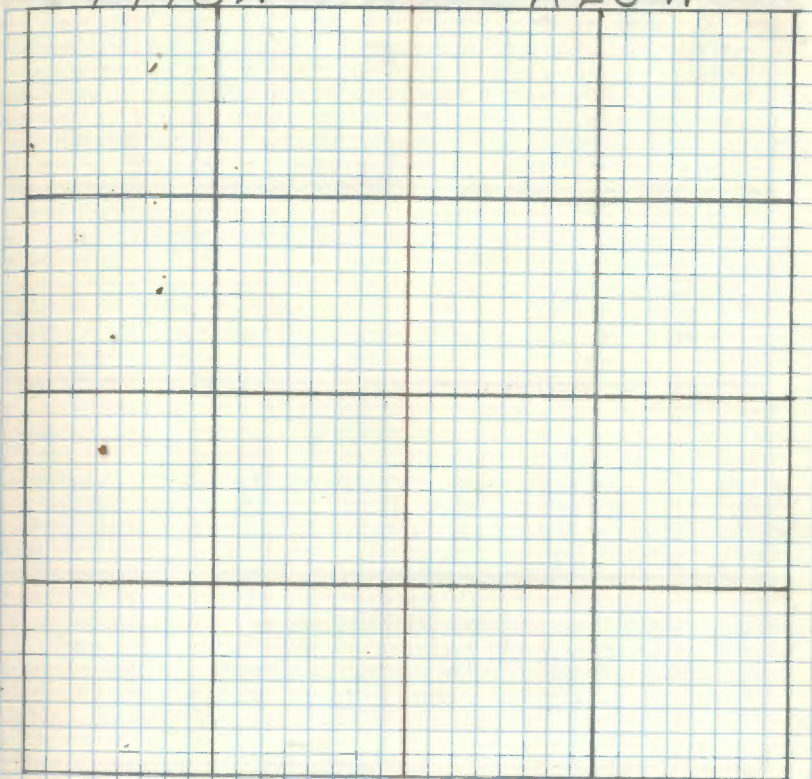
SET PIPE AND WITNESSED

PINE STP 27" N18E 53.0

W. PINE 6" S42E 58.0

T148N

R25W

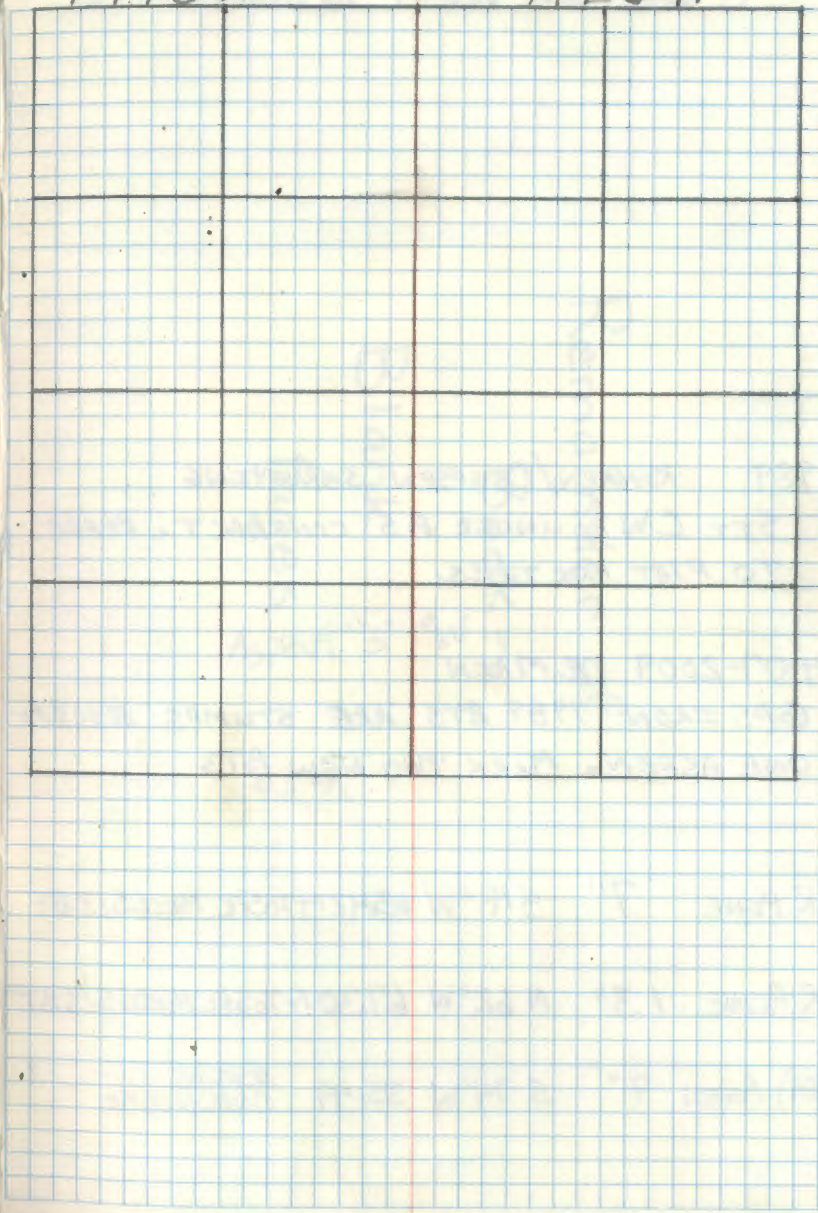


35

A-23 CLOSING QUARTER CORNER SECTION 1

T148N

R25W



CENTER WEST $\frac{1}{4}$ SECTION 13

1989 KOVANEN/OSUFSEN SURVEYING
 SET C.W. $\frac{1}{4}$ UNDER FS CONTRACT. REFER
 TO PLAT FOR TIES.

4-07-2009 R. MAIN
 GPS IRON 1989 BTS ARE STUMPS EXCEPT
 ONE ASPEN. MARK TWO NEW BTS

R PINE 7" S 18° W 63.42 FT TO SPK MKD \circ S 13 BT

R PINE 13" N 62° W 67.30 FT TO SPK MKD \circ S 13 BT

(1989) ASPEN 9" S 74° W 35.49 SCRIBBLE
GROWN OVER

Remainder of
 Book -
 Blank
 Pages
 ASPEN 9" S 74° W
 63.42