

CORNER
RESTORATION
148N R25W



MINING
TRANSITION
No. 584

BOOK #3

N $\frac{1}{2}$ Cor. Sec 4-5

Notes of Co. Surveyor P.C. Warner July 1918

Iron monument

Cedar stp. 12" S34E 47.5'

W. Pine 10" N50W 82.0'

T148N

R25W

1115.4

1115.4

1824.8

1804.0

Private

Field

1783.1

1090.2

xx 1090.2 xx

CT

FR # 12184

N.E. 1/16 Sec. 5

Notes of Co. Surveyor P.C. Warner July 1918

Iron monument

Cedar stump 10" S 95E 7.3'

		T148N		R25W	
1115.4'	1115.4'	1115.4'	1115.4'	1115.4'	1115.4'
1864.5'	1844.7'	1824.8'	Private Field	1804.0'	Private Field
1133.7'	1133.7'	1133.7'	*****		1090.2'
1485.5'	1462.6'	1439.8'	F.S.	1416.4'	F.S.
1152.0'	1152.0'	1065.0'		1065.0'	1065.0'
1324.5'	1359.8'	1395.1'		1394.1'	1393.1'
1170.1'	1170.1'	1039.7'		1039.7'	1039.7'
1324.5'	1359.8'	1395.1'		1394.1'	1393.1'
1188.3'	1188.3'	1014.5'		1014.5'	1014.5'

3

B-7 Affidavit

North Center $\frac{1}{16}$ Sec. 5

Notes of Co. Surveyor P.C. Warner July 1918

Birch 14" S 45 $\frac{1}{2}$ ° E 25.0' (Not Found)

Birch 14" West 26.7' (Not Found)

Found 1" Iron pipe marking corner under old
fence line (cor. was found by chaining East
from NW $\frac{1}{16}$ along old fence line)

Set a 6" dia. 5' Long cylindrical concrete
monument capped w/ a 3" dia. bronze
tablet stamped:

T19BN R25W

N $\frac{1}{16}$ S 5'

1961

RLS NO 3628

From which bears

Oak 7" S 25° W 25.45' MKD NC $\frac{1}{16}$ S 5' BT

Cedar post 4" x 4" x 6.5' penta-treated 5' w/

red top East 3.2'

6/19/61 R.H. McDonald

R9-5680-11

Posted 9/19/61 R.H.M.

Cor. R.C.

T19BN

R25W

18447	1115.4	1115.4	1115.4	17831
	Private	Private		
	Field	Field		
	1133.7	1090.2	1090.2	
	FS	FS.		
		5		

Placed F.S. Poster on a 10" B. of Gilead from
which cor. bears N 38° E 14.8'

12-21-61
O.K.
R.A. Miller

4 B-4 Affidavit

North west 1/16 Sec. 5

Notes of Co. Surveyor P.G. Warner July 1918

Iron monument (1" dia. I. Pipe in place at old
Birch 19" S89W 10.5' (Not Found)
fence corner)

Balsam 9" N21E 10.8' (Not Found)

Set a 6" dia. 5' Long cylindrical concrete
mon. capped w/ a 3" dia. bronze
tablet stamped:-

T148N R25W

N.W. 1/16 S.S.

1961
RLS NO 3628

From which bears

Oak 3" S8°W 20.35' MKD "X BT"

Past. Cedar 4" x 4" x 6.5' pent a-treated
& w/ a red top. East 2.9'

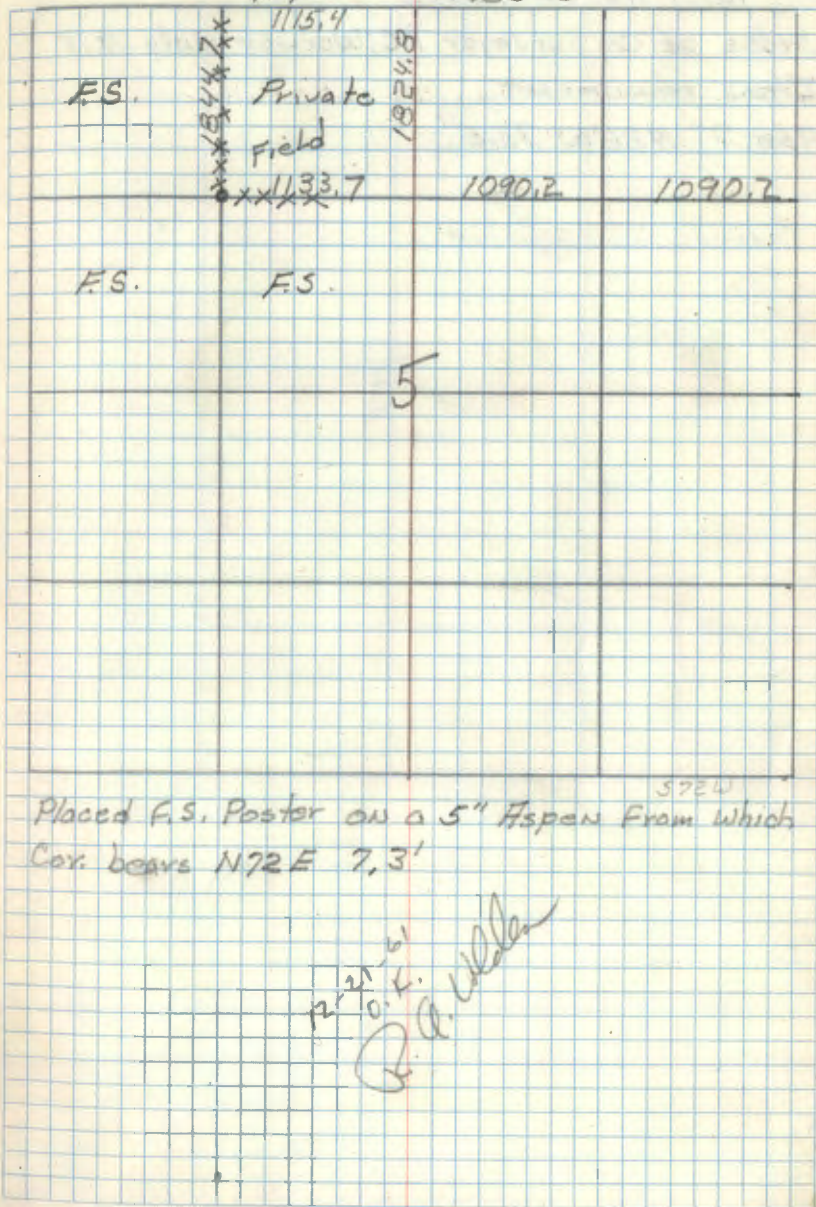
6/19/61 R.H.M. McDonald

R9-5680-11 9th

Posted Affid. 9/7/61
R.H.M.

T148N

R25W



Placed F.S. Poster on a 5" Aspen From which
Cor. bears N72E 7.3'
5724

6/21/61
O.K.
R.H.M.

R.H.M.

5

West 1/16 of Sec. 5

Notes of Co. Surveyor P.G. Warner July 1918

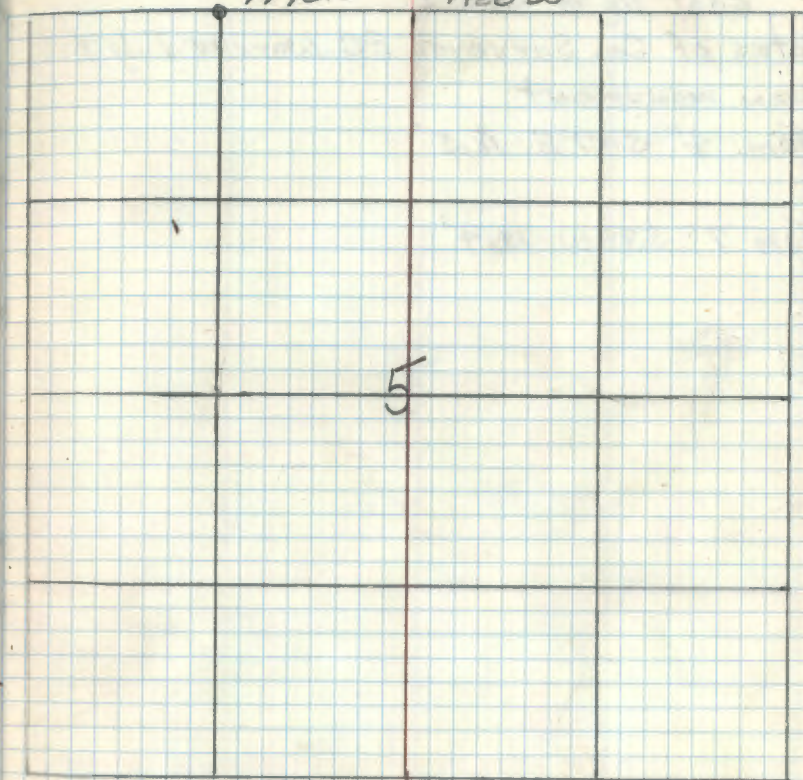
Iron monument

Ash 7" N26°W 73.5'

R9-5680-11 JHC

T148N

R25W



6

East $\frac{1}{16}$ of Sec 5

Notes of Co. Surveyor P.G. Warner July 1918

Iron monument

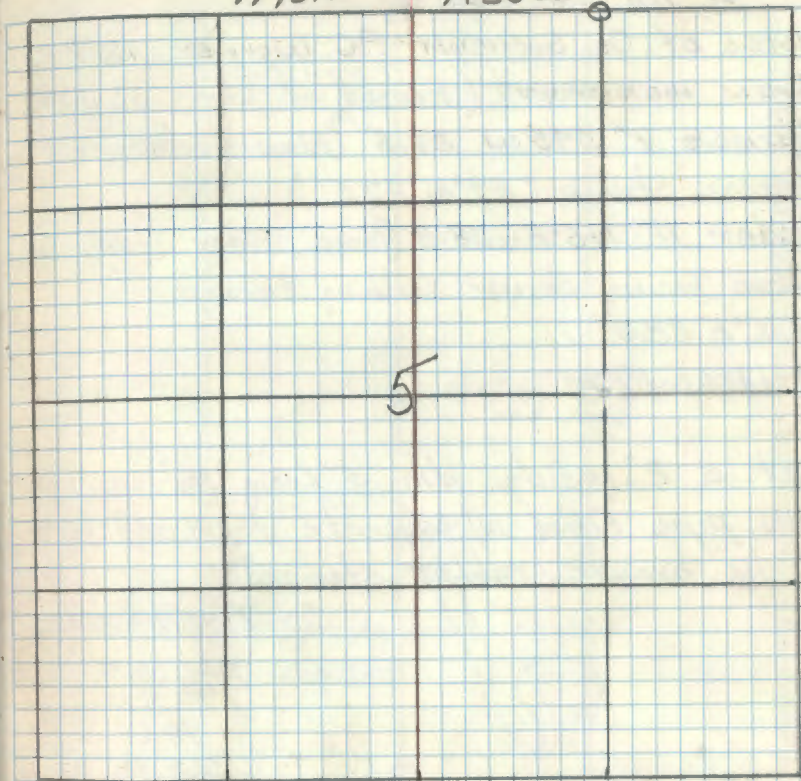
Tam. 4" S47°E 18.5'

Tam 7" S34W 13.4'

R9-5680-11 Ave

T148N

R25W



7

E-8

E 1/16 Sec. 5-8

Notes of Co. Surveyor P.G. Warner 1918

Iron monument (Found in ^{1" iron pipe} place in old road)

Spruce 9" S45W 27.5' (Now a decayed spruce stump S29°W 27.5')

Cedar 11" N5°E 28.3' (Now a cedar stump w/ blaze facing corner scribing burned off N16°E 28.3')

4-13-61 RHM

Set a 2" inside dia. 5' long gal. wrought iron pipe filled w/ concrete & capped w/ a 3" dia. bronze tablet stamped:

T148N R25W

E 1/16 S5

S8

1961

P.L.S. No 3628

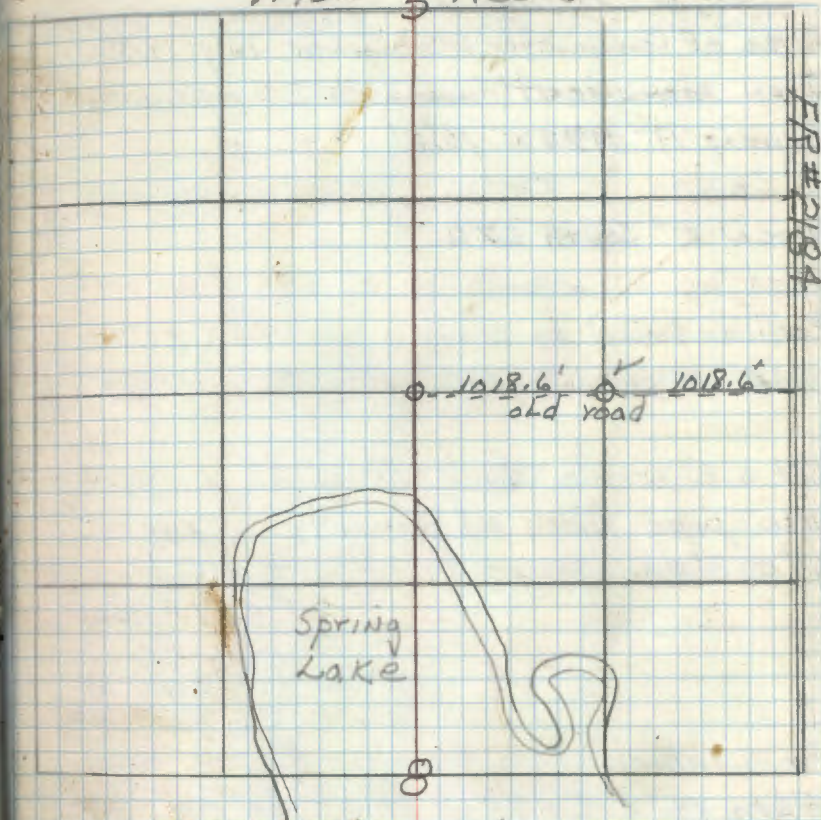
Aspen 9" N91E 18.75' MKD E 1/16 S5 BT

Cedar Post 4" x 4" x 6.5' penta-treated w/ red Top West. 2.0'

6/23/61 R.H. McDonald

R9-5680-11 HK tested Affidavit 9/7/61 RHM

T148N S R25W



Placed F.S. Location poster on a 10" Aspen from which cor. bears S42W 18.4'

12-14-61
O.K.
P.G. Warner

Sec bk 4 T148N R25W pg 13

FR # 2184

8 G-3

Center 1/4 Sec 7

Notes of Co. Surveyor P.C. Warner July 1918
Iron monument (Found a 1 3/4" I.P. marking Cor.)

Aspen 14" N 72 W 16.2'

Aspen 10" South 27.0

Cor was found by chaining west from EC 1/16
1331.5' as per call of Co. notes. 3/13/61 RHMSet a 2" inside dia. 5' Long gal. wrought
iron pipe filled w/ concrete & capped
w/ a 3" dia. bronze tablet stamped

T148N R25W

C 1/4 S7

1961
PLS NO 3628

From which

ELm 14" S 77 E 69.25' MKD C 1/4 S 7 BT

Cedar post 4" x 4" x 6.5' pent-a-treated
& w/ red top North 2.35'

6/21/61 R.H. McDonald

5/12/81 by Ronald Olesen Monument & BT OK Cut 11-11-81
New BT's

Ash 6" S 4 W 54.40' C 1/4 S 7 BT

Ash 4" S 38 W 33.80' C 1/4 S 7 BT

Steel post 8' Long. East 4.0' w/ sign 54-2

Steel post 8' Long North 4.2' w/ sign 54-2/54-9

R9-5680-11 JMC

Posted HFF.
9/7/61 RHM

T148N

R25W

1780.6	1766.4	1326.15	1326.15
1258.05'	1250.95'	1328.8'	1328.8'
	F.S.	Private	
1735.5	1735.5	1331.5'	1331.5'
	F.S.	F.S.	
1750.6	1752.3	1309.95'	1309.95'
1767.9'	1779.0'	1288.4'	1288.4'

Placed F.S. Metal location poster on a 6" x 9"

Aspen from which cor bears ~~N 72 E 6.6'~~

S 48° W 5.95'

(Orig. tree blown down)
2001-3-12
O.K.

P.A. Olesen

R9-5150-4 by Olesen

10.

E-4

East $\frac{1}{16}$ Sec. 6-7

Notes of Co. Surveyor P.C. Warner 1918

Iron monument (Found in place) $1\frac{1}{2}$ " pipe)

N. Pine 8" S85°W 78.0'

Birch 9" S24°E 17.8'

Cor. was found by chaining west 1326' as per call of Co. notes 3/14/61 RHM

Corner was found on an old cut out line.

Set a 2" inside dia. 5' long gal. wrought pipe filled w/ concrete & capped w/ a 3" dia. bronze tablet stamped:-

T198N R25W

E $\frac{1}{16}$ S 6

1961

RLS NO 362B

From which bears

Birch 5" S12 $\frac{1}{2}$ W 20.5' MKD E $\frac{1}{16}$ S 7 BT

Cedar post 4" x 4" x 6.5' pent-a-treated red topped East 1.82'

6/21/61 RHM McDonald

5/13/81 by Ronald Olson Monument + BT OK

Cut new BT²Birch 4" N44°E 34.02" E $\frac{1}{16}$ S 6 BTBalsam 5" S78°W 28.95" E $\frac{1}{16}$ S 7 BT

Steel post 8' long west 5.2" w/sign 54-2

steel post 8' long East 4.6" w/signs 54-2 & 54-9

Posted
Aff. 9/7/61 RHMR9-5680-11. 8th
Furrowed North of
Line

T198N

R25W

1326.15'

1326.15'

Private

Private

1077.75'
1077.75'
1077.75'

Placed F.S. poster on a 3" Balsam from which cor. bears N98°E 6.3'

1-3-62
O.K.

R. G. Walker

R9-760-4 by Olson

11

E-2

West 1/16 Sec. 6-7

Notes of Co. Surveyor P.C. Warner 1918

Iron monument (Found 1 3/4" I.P. marking Cor.)

W. Pine 10" S86°W 25.2' (Now a stump

N 78W 25.2' mostly decayed)

W. Pine 8" North 15.9' (Now a 17" W. Pine

N 7°E 15.9')

Search time 30 min. 3/14/61 RHM

Set a 2" inside dia. 5' Long gal. wrought
iron pipe filled w/concrete & capped
w/a 3" dia. bronze tablet stamped:-

T148N R25W

W 1/16 56

57

1961

R.L.S. NO. 8628

From which bears:-

Red Pine 17" N22 1/2°W 20.3 MKD W 1/16 S 6 BT

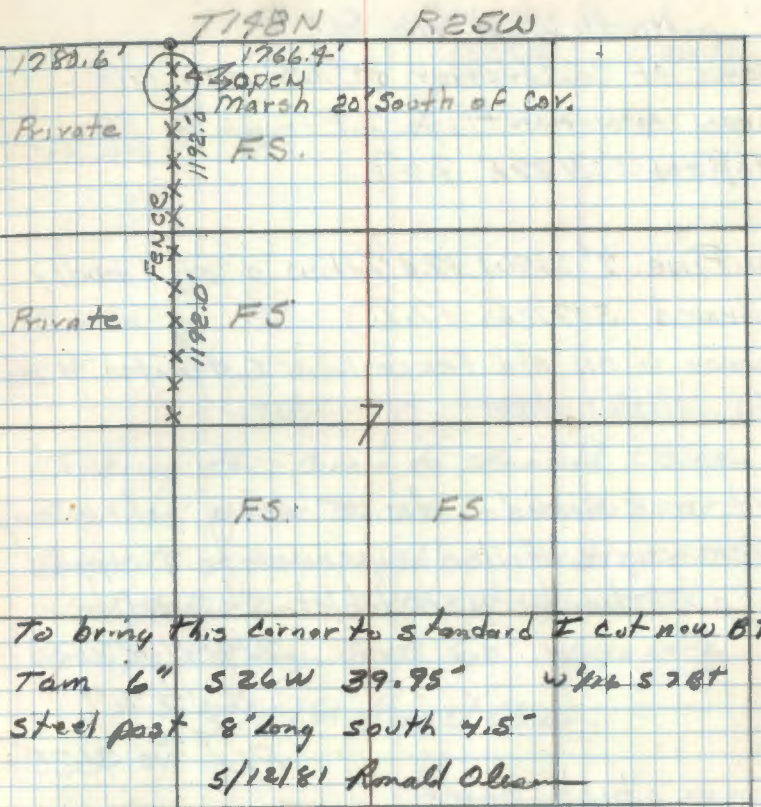
Rock 3' x 2.5' proj. 0.5' above ground N 67°W

2.6' to "X" on high pt.

Tam. 4" S 25°W 22.0 MKD X BT

6/22/61 R.H. McDonald

R9-5680-11 JPL Affidavit made 9/7/61 RHM



Placed F.S. Post on a 9" Aspen from which
Cor. bears S 32°E 8.4'

12-20-61
OK
P.A. Collier

R9-7150-4 by Olson 5/12/81

12 F-2

North West 1/16 Sec 7

Notes of Co. Surveyor P.C. Warner 1918

Iron monument (1 3/4" I.P. found in place)

Aspen 8" N32E 9.0'

W. Pine 7" S15W 17.8' (Now a stp. badly
burned S12 1/2 W 17.8')Corner is on old fence line Estimated 40 years
old. 5/13/61 RHMSet a 2" inside dia. 5' Long gal. wrought
iron pipe filled w/ concrete & capped
w/ a 3" dia. bronze tablet stamped:

T148N R25W

NW 1/4 S7

196
RLS NO 3628

From which bears:

Maple 4" S55W 20.7' MKD x BT

Maple 4" S39E 51.9' MKD NW 1/16 S7 1/2

Cedar post 4" x 4" x 6.5' penta-treated &
w/ red top North 4.35'

6/22/61 P.H. McDonald

R9-5680-11 JH

Affidavit made
9/7/61 RHM *

T148N

R25W

	1766.4	1326.15	1326.15
Private	1792.0	1077.7	
Private	1792.0	1077.7	
	1735.5	7	
To bring this corner to standard I cut NW 1/4			
Birch 6" S20W	33.20'	NW 1/4 S7 1/2	
Birch 9" N4W	42.56	NW 1/4 S7 1/2	
steel post 8" long	North 5.6'	w/sign 54-2	
steel post 8" long	South 6.2'	w/sign 54-2	54-9
5/12/81 Ronald Olson			

Placed F.S. poster on a 8" Aspen frame
which cor bears N25W 10.4'12-20-61
P.C. Warner

19-7150-4 by Olson 5/12/81

13 G-2

West Center 1/16 Sec 7

Notes of Co. Surveyor P.G. Warner 1918

Iron monument (Found 1 1/4" I.P. at old fence corner)

No trees near

Cor. is in open marsh: 3/13/61 RHM

Set a 2" inside dia. 5' Long gal. wrought iron pipe filled w/ concrete & capped w/ a 3" dia. bronze tablet stamped:-

T148N R25W

c ^{W 1/16 C}
57

1961

PLS NO 3628

Maple 6" S27W 102.25' MKB WC 1/16 S78T

Maple 5" S31E 120.2 " " " "

4/22/61 R.H. McDonald

5/12/81 set steel post 8' North 3.7 w/sign 54-9

Steel post 8' south 3.4 w/sign 54-2954-9

5/12/81 Ronald Olesen RA-7150-4 by Olesen

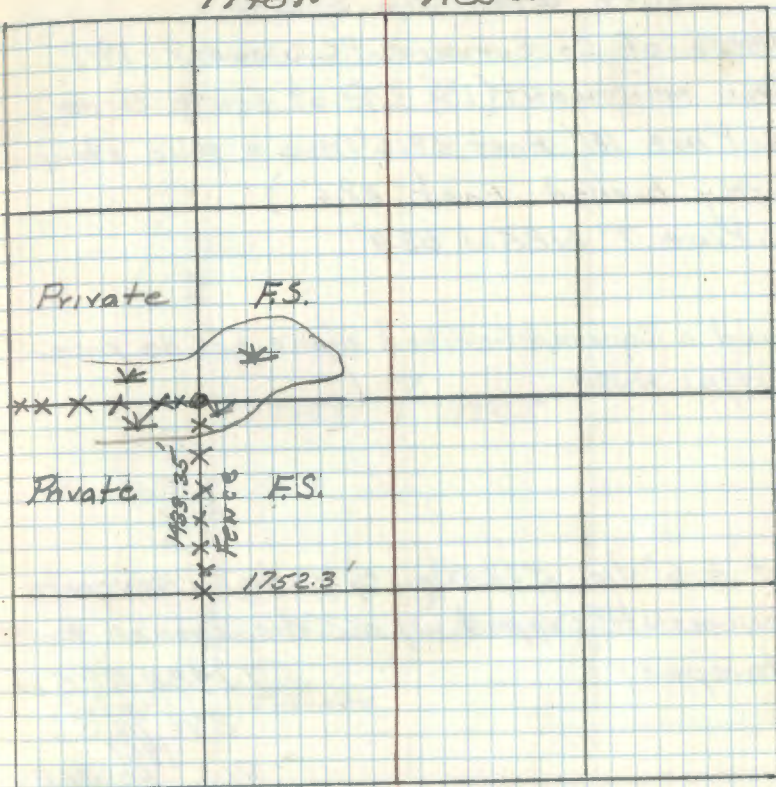
RA-5680-11 JHe

Affidavit made
9/7/61 RHM

*

T148N

R25W



Poster is on fence post 10.6' South of corner

11-20-61
OK

R. O. Olesen

14

H-2

South West $\frac{1}{16}$ Sec. 7

Notes of Co. Surveyor P.C. Warner 1918

Iron monument (1 $\frac{3}{4}$ " I.P. at fence corner)N. Pine 12" East 68.6' (Now a pine stump
mostly burned East 68.6')

W. Pine 7" N85W 63.9'

Found a squared scribed stake beside pipe.

3/13/61 RHM

Set a 6" dia. 5' long cylindrical concrete
monument capped w/ a 3" dia. bronze tablet
stamped:

T198N R25W

SW $\frac{1}{16}$ S71961
RLS NO 3628

From which bears

Birch 8" N67°W 35.45' mto SW $\frac{1}{16}$ S7BTRock 2.0' x 2.5' x 0.8' above ^{ground} N81°E 7.8' measured to highest pt.

Cedar post 4" x 4" x 6.5' penta-treated & w/

a red top North 3.2'

6/19/61 RHM McDonald

5/12/81 Ronald Olson Monument to BT's ok cut New 02

Birch 6" N8°E 43.33" SW $\frac{1}{16}$ S7BT

Steel post 8' long, North 5.7' w/sign 54-54-9

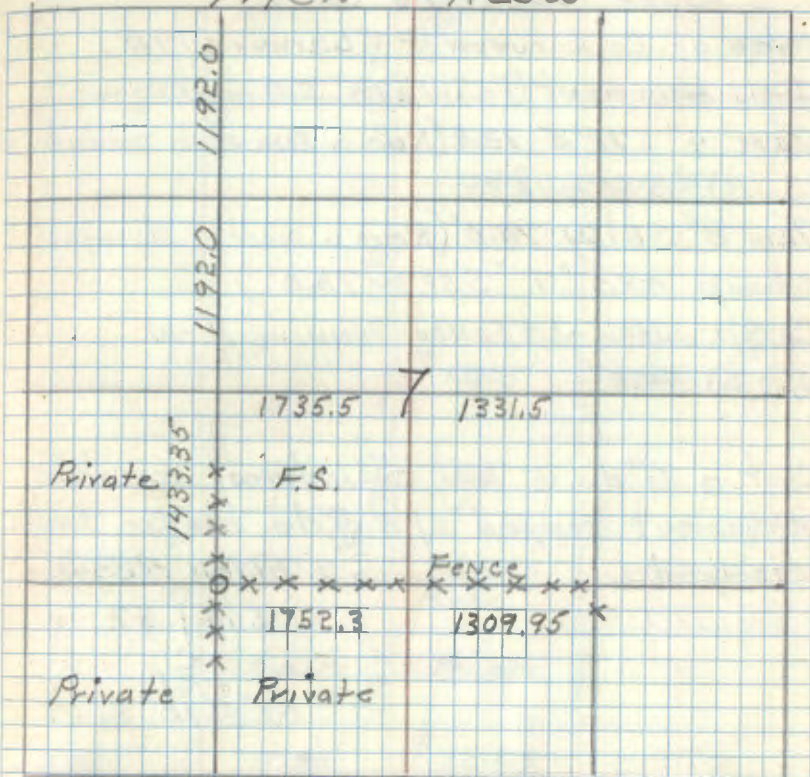
Steel post 8' long East 6.6' w/sign 54-2954-9

R9-5680-11 JH

Affidavit made
9/9/61 RHM

T198N

R25W



F.S. metal post on corner fence post

12-20-61
RHM

R9-7150-4 by Olson

16

H-4

South East $\frac{1}{16}$ Sec. 7

Notes of Co. Surveyor P.C. Warner 1918

Iron man. (1 $\frac{3}{4}$ " I.P. Found making corner)W. Pine 16" N35E 10.3' (New a partly decayed
pine stp. N45E 10.3' no scribe visible

Birch 14" S12E 18.4'

Cor. is at Fence cor. Found by chaining
East from S.C. $\frac{1}{16}$ 1307.95' as per call of Co.

Notes 3/13/61 RHM

Set a 6" dia. 5' Long cylindrical concrete
monument capped w/ a 3" dia. bronze tablet
Stamped:-

T148N R25W

SE $\frac{1}{16}$ S71961
PLS NO 3628

From which bears:-

W. Spruce "Twin" 8" N26E 13.1' MKD SE $\frac{1}{16}$ S7Ash 7" N49 $\frac{1}{2}$ W 81.15' MKD SE $\frac{1}{16}$ S7 BTCedar post 4" x 4" x 6.5' pentatreated & w/
a red top West 17.33'

6/9/61 RHM - Donald

5/12/61 by Ronald Olson

Cut new BT

Spruce 7" S50E 12.53" SE $\frac{1}{16}$ S7 BT

Steel Post 8' Long North 5.7" w/sign 54-29549

Steel Post 8' Long West 6.5" w/sign 54-2

R9-5680-11 246

HCCidavit 2/1/61 RHM

T148N

R25W

F.S.

F.S.

Private

x x x x x 1307.95'
Fence

Private

Private

Placed F.S. metal location poster on a 5"
Balsam from which Cor. bears S74E 15.2'12-22-61
OK
R.D. Walker

R9-5680-4 by Olson

17

G-4

East Center 1/16 Sec. 7

Notes P.C. Warner 1918

Iron monument (1 3/4" I.P. in place)

B. Gilead 24" S51W 22.0' (Now a B of G.
wind fall w/scar facing Cor. S 62°W 22.0')Balsam 6" N14W 6.9' (Now a 1 1/2" Balsam
wind fall w/ blaze on S.E. side N19°W 6.9')

3/13/61 RHM

Set a 2" inside dia. 5' long galvanized
wrought iron pipe filled w/ concrete
& capped w/ a 3" dia. bronze tablet
stamped

T198N R25W

CE 1/16 C

S 7
1961

RLS NO 3628

Ash 13" N18W 50.3' MKD EC 1/16 S 7 BT

Oak 18" N83E 40.7' MKD EC 1/16 S 7 BT

6/21/61 R.H. McDonald

5/12/81 by Ronald Olson

cut new BT

Ash 11" N31W 36.54' CE 1/16 S 7 BT

steel post 8' by west 6.5' w/ sign 54-2

Steel post 8' long South 5.8' w/ sign 54-2

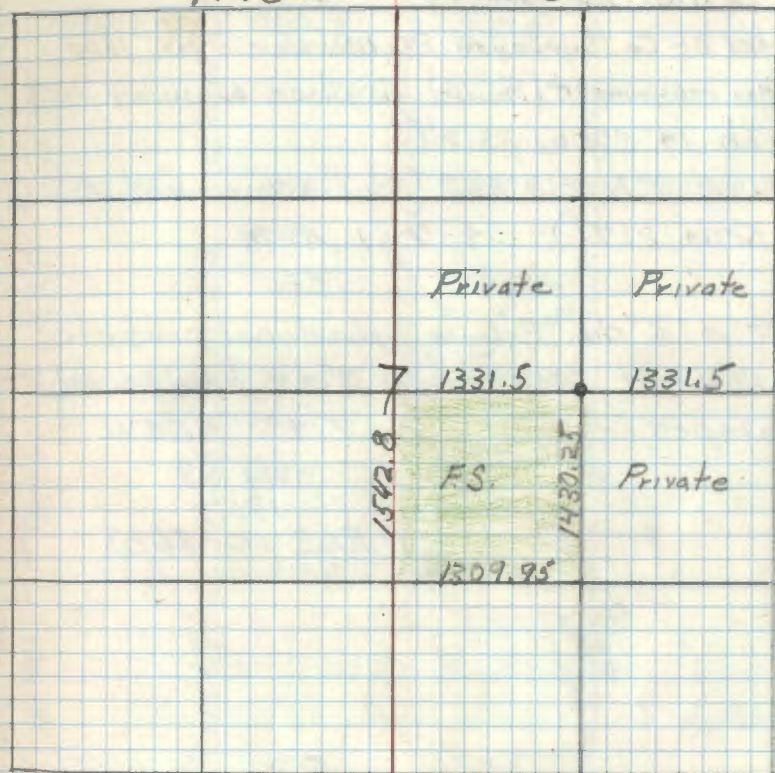
R9-7150-4 by Olesen

R9-5680-11 26

Affidavit 9/11/61 RHM

T198N

R25W

Placed F.S. Metal location poster on a 5"
Balsam from which Cor. bears N82°W 5.4'1-3-42
O.K.
P.A. Wilson

18

G. A.

Center 1/4 Sec. 9

Notes of Co. Surveyor P. G. Warner Jan. 1922
 Iron monument (Found in place 6" under road)
 Birch 19" S20W 33.2'
 B. Wood 7" N12W 21.7' (Now a basswood clump
 N5°W 21.7') 4-7-61 RWM

Set a 6" dia. 2' long cylindrical concrete
 monument capped w/ a 3" dia. bronze tablet
 stamped 1-

T148N R25W

C 1/4 S9.

1961

R.L.S. NO. 3628

New BTs

Elm 25" S60 1/2 E 105.0' MKD C 1/4 S9 BT

Elm 9" N52W 27.7' MKD C 1/4 S9 BT

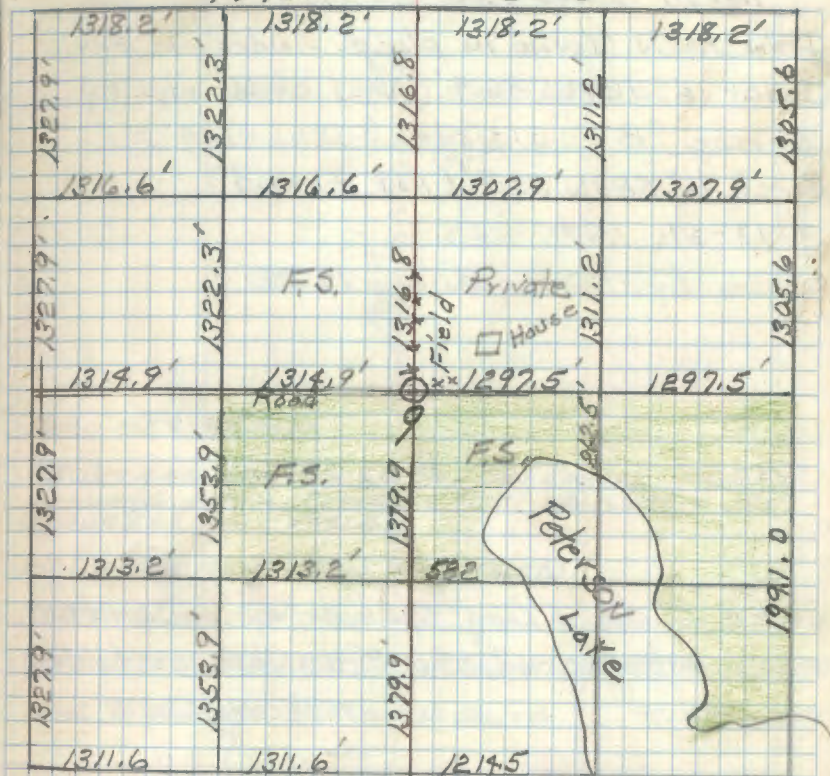
Maple 6" S45°W 45.9' MKD C 1/4 S9 BT

OK
 1/16/61 5/18/61 RWM

Affidavit 9/11/61 RWM

T148N

R25W



Placed F.S. Poster on a 10' Elm from
 which cor. bears S52°E 27.4'

See T148N R25W Bk 4 pg 14

19

F-11

North Center 1/16 Sec. 9

Iron mon. (Found in place under old fence)

Cedar 6" S24W 86.4' (New cedar etc. w/

scribe "BT" visible S33W 86.4')

Birch 16" S83W 30.8' (Not Found)

4-13-61 RMM

Survey by P.C. Warner 1922

Set a 6" dia. 5' long cylindrical concrete monument capped w/ a 3" dia. bronze tablet stamped:-

T148N R25W.

$$\begin{array}{c} C \\ N\frac{1}{16} | S9 \\ C \end{array}$$

1961

RLS NO 3628

From which bears

Oak 10" N29°W 18.45 MKP, N.C. 1/16 S9 BT

Oak 10" S51°W 54.35" N.C. 1/16 S9 BT

Cedar post 4" x 4" x 6 1/2' painted - treated w/ red top North 4.5' Fd OUT OF GROUND

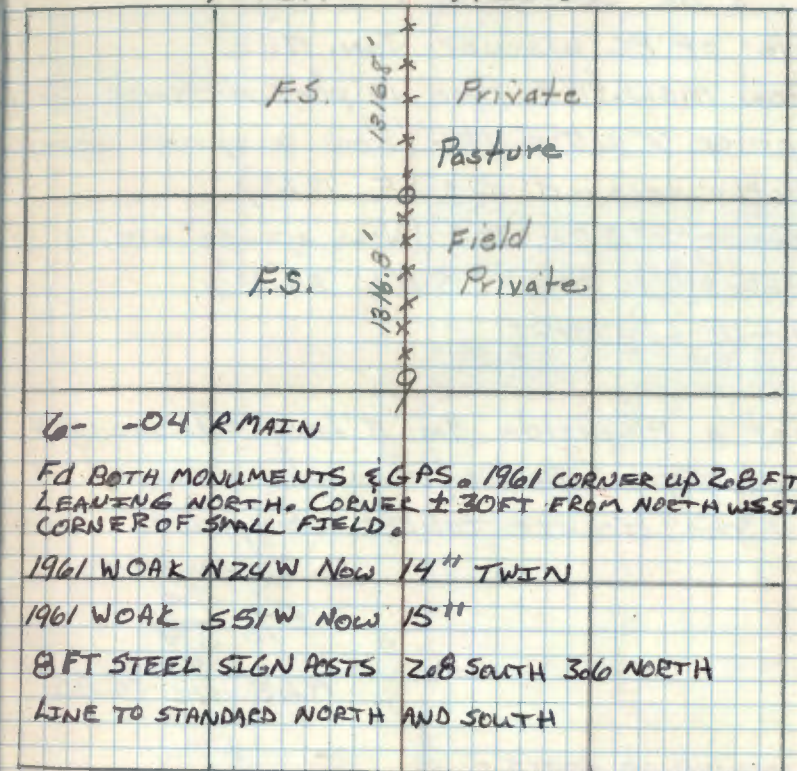
5/18/61 RMM & Donald

R9-5680-11 JK

H. H. Davitt 9/11/61 RMM

T148N

R25W



6-04 R MAIN

Fd BOTH MONUMENTS & GPS. 1961 CORNER UP 20 FT LEAVING NORTH CORNER ± 30 FT FROM NORTH WEST CORNER OF SMALL FIELD.

1961 W OAK N24W Now 14" TWIN

1961 W OAK S51W Now 15"

8 FT STEEL SIGN POSTS 208 SOUTH 306 NORTH

LINE TO STANDARD NORTH AND SOUTH

Placed F.S. poster on 9" Oak from which Cor. bears S23°E 17.8'

12 x 24
OAK
R. G. [Signature]

20

E-10

E 1/16 Sec's 4-9

Notes of P.C. Warner Jan. 1922

Iron mon. (1" I. Pipe in place at fence cor.)

Spruce 7" N 7° E 19.6' (Now a spruce stump mostly decayed N 15° E 19.6')

Spruce 7" S 2° E 24.1' (Now spruce stp. scribed "1/16 S 9° BT" S. 8° W 24.1')

4-12-61 RHM

Set a 2" inside dia. 5' long gal. wrought iron pipe filled w/ concrete & capped w/ a 3" dia. bronze tablet stamped:-

T148N R25W
 E 1/16 S 4
 S 9
 1961
 RLS NO 3628

From which bears:-

BLK. Spruce 5" N 67° E 14.4' MKD x BT.

BLK. Spruce 5" N 36° W 9.2' " E 1/16 S 4 BT

BLK. Spruce 7" S 2° E 7.0' " E 1/16 S 9 BT

5/24/61 RHM McDonald

23°

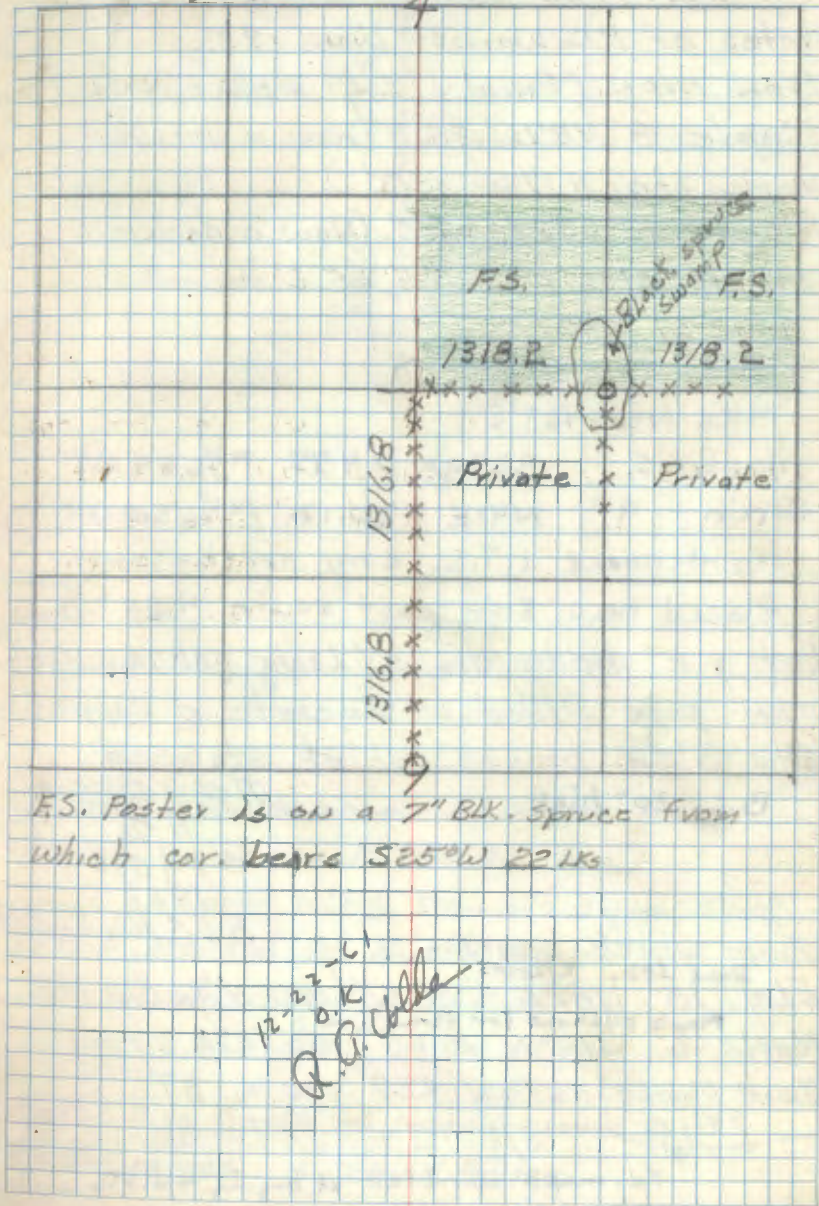
R.A.U.

R 9-5680-11 246

Affidavit made
9/14/61 RHM

T148N

R25W



21

F-13

North 1/16 Sec. 9-10

Notes of P.C. Warner Jan. 1922

Iron MON. (Found 1" I.P. in place under fence)

Maple 8" N27W 35.3' (Now a decayed maple stp. N17°W 35.3')

Maple 12' S32E 25.2' (Now a decayed maple stump S23°E 25.2')

4-12-61 RHM

2/24/05 JS, CG, GB

MKD New BT'S.:

Maple 5" S85W 24.75 N 1/16 S9 BT

Birch 9" N41E 20.12 N 1/16 S10 BT

Maintenance L.T.S. done north & south

Placed new sign post south 4.65' ^{both} signs

Set a 2" inside dia. 5' Long gal. wrought iron pipe filled w/ concrete & capped w/a 3" dia. bronze tablet stamped

B.C. 20" high

T148N R25W

N 1/16

S9 | S10

1961

R.L.S. NO. 3628

From which bears:-

Dead Stb. 2/24/05
ELM 18 N89E 38.55' MKD N 1/16 S10 BT

Maple 6" S13°W 21.65' MKD N 1/16 S9 BT

TWIN Maple N67 1/2 W 42.7' MKD X BT

7" ↓

5/22/61 RHM Donald

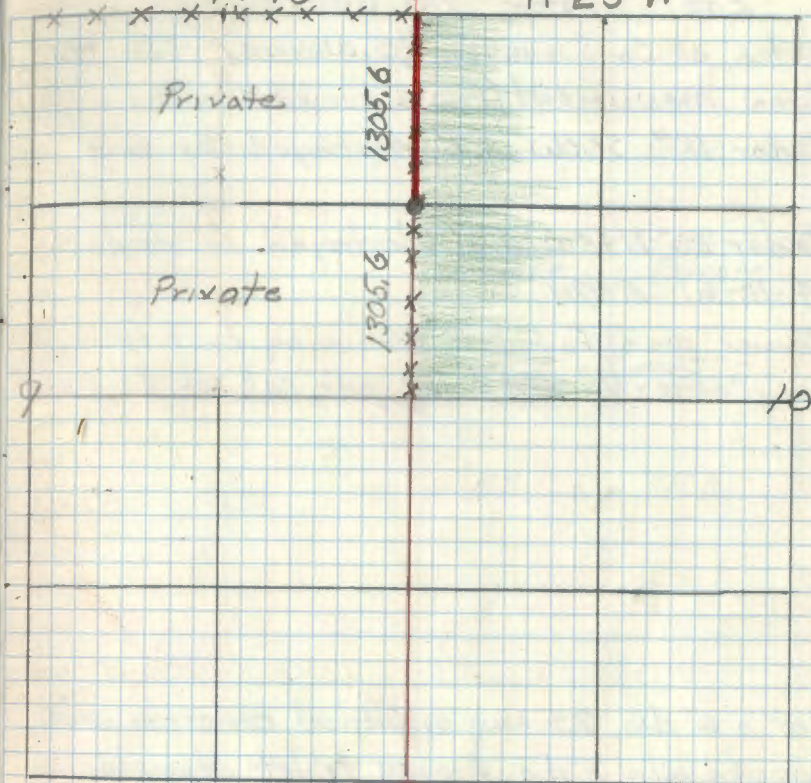
Fd. maple windfall at bearing & dist.

R9-5680-11 JHC

Affidavit 9/4/61 RHM

T148N

R 25W



Placed R.S. Post on 2" Maple from which cor bears N77W 3.6'

Steel signpost w/ FS standard signs 59-2 & 59-4 attached set North 4.2 ft.

12-24-67
of

Marked line north to section corner up to FS Standards. 4-24-67 RHM.

22

G-12

East Center 1/16 Sec. 9

Notes of Co. Surveyor P.C. Warner Jan 1922

Iron monument (found buried 4" under road)

Cedar 18" S60W 3.9' (destroyed by road)

Cedar 20° N 95W 2.3' (destroyed by road)

4-12-61 RHM

Corner was found by chaining East from
the Center 1/4 Sec. 9 as per call of Co notesSet a 6" dia. 24" long cylindrical concrete mon.
capped w/a 3" dia. bronze tablet stamped:-

T148N R25W

E 1/16

C S 9 C

1961

R.L.S. NO. 3628

From which bears:-

Cedar 7" S54°W 58.7' MKD EC 1/16 S9 BT

Tam. 9" S13°W 32.6' " EC 1/16 S9 BT

Oak, Twin 11" N77 1/2° E 98.5' " EC 1/16 S9 BT

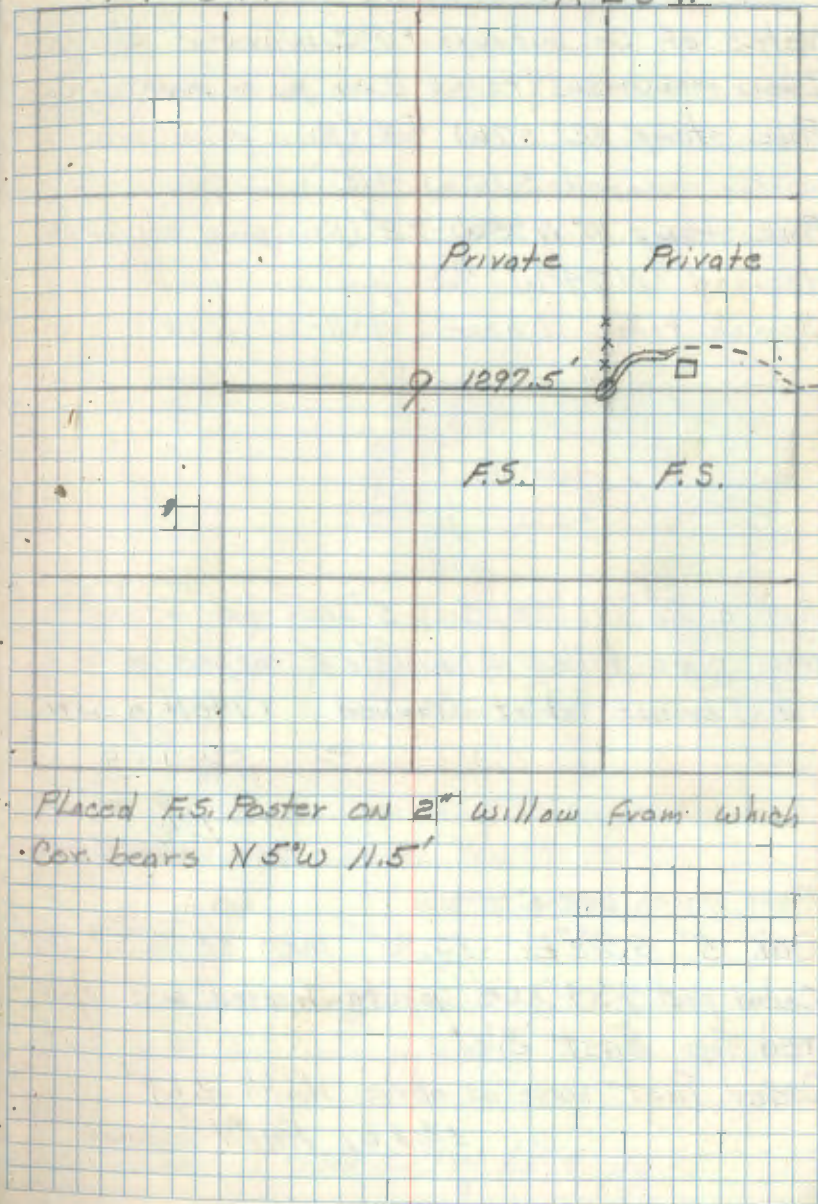
64 pages
7/14/67

5/18/61 RHM Donald

Affidavit made
9/11/61 RHM

T148N

R25W

Placed F.S. Foster on 2" willow from which
Cor. bears N5°W 11.5'

23

H-11

South Center 1/16 Sec. 9

Notes of Co. Surveyor P.C. Warner Jan. 1922

Iron monument (Found Iron pipe marking Cor.)

Pine stump 12" S74W 4.8' (Now pine stp
mostly decayed S16°W 4.8')Pine stump 10" N75W 7.2' (New pine stp mostly
decayed N74°W 7.2')

Search time 1 hour, 4-11-61 R.H.M.

Set a 2" inside dia. 5' Long gal. wrought
iron pipe filled w/ concrete & capped w/ a
3" dia. bronze tablet stamped T198N R25W

$$S \frac{1}{2} | S9$$

$$1961$$

$$RLS NO 3628$$

From which bears:-

Oak 5" S5 1/2° E 17.95' MKD SC 1/16 S9 BT

Cedar post 4' x 4" x 6 1/2" penta-Treated and w/ a
red top East 2.6'

Cedar Post same as above North 2.67'

5/18/61 R.H.M. Donald

5680-11 816

Affidavit made
9/11/61 R.H.M.

T148N

R25W



Placed F.S. Post on a 5" Oak from
which corner bears N5°W 17.4'

$$N5^{\circ}W 17.4'$$

R-60-4
O.K.

R. A. Udden

See T148N R25W bk 4 pg 15

24

J-10

West 1/16 Sec 9-16

- Notes of Co. Surveyor R.C. Warner 1922
- Iron monument (1" iron pipe in place)
 - Pine stump 24° N30W 42.7' (Now pine stump badly burned w/ blaze facing cor. N22°W 42.7')
 - Pine stump 21° S61E 46.2' (Now badly burned)
 - Pine stump S50E 46.2' w/ partial scribe vis.
 - Search time 1 hour 7-11-61 RHM

Set a 2' inside dia. 5' long gal. wrought iron pipe filled w/ concrete & capped w/ a 3" dia. bronze tablet stamped:

T148NR25W
 W 1/16 S 1/16
 1961
 R.L.S. NO 362B

Oak 8" S29°E 20.75' MKD W 1/16 S 1/16 BT
 Red Pine 5" N65°E 49.9 " W 1/16 S 1/16 BT
 Oak 8" N11°W 69.8 " W 1/16 S 1/16 BT

5/18/61 R.A. McDonald

R9-5680-11 2H

Affidavit made
9/11/61 RHM

T148 N

R25W

1012 57

9

F.S.

F.S.

Lake

1311.6' 1311.6'

old Road

Placed F.S. poster on a 5" Birch from which cor bears S23°W 26.0'

12-20-61
OK.

R.C. Warner

25

4-11, 12

S.M.C. West bank Peterson Lake

Notes of Co. Surveyor P.C. Warner 1922

Iron monument

Birch 8" N81W 14.5' (Now 10" Birch stub
(dead) w/ scribe 1/16" visible

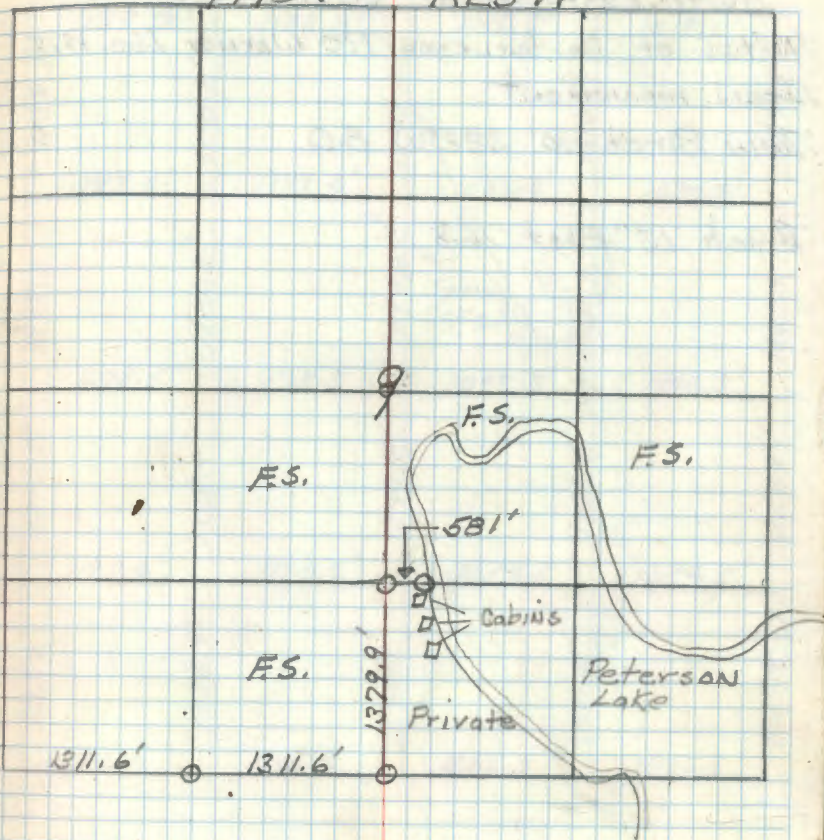
Poplar 12" S26W 18.0'

Corner is now IN lake as birch BT is
on waters edge. 7-12-61 RHM

R9-5680-11 Hrb.

T198N

R25W



27

S.M.C. 816.7' South of 1/4 Sec 5-8'

Notes of P.C. Warner 1918

Iron monument

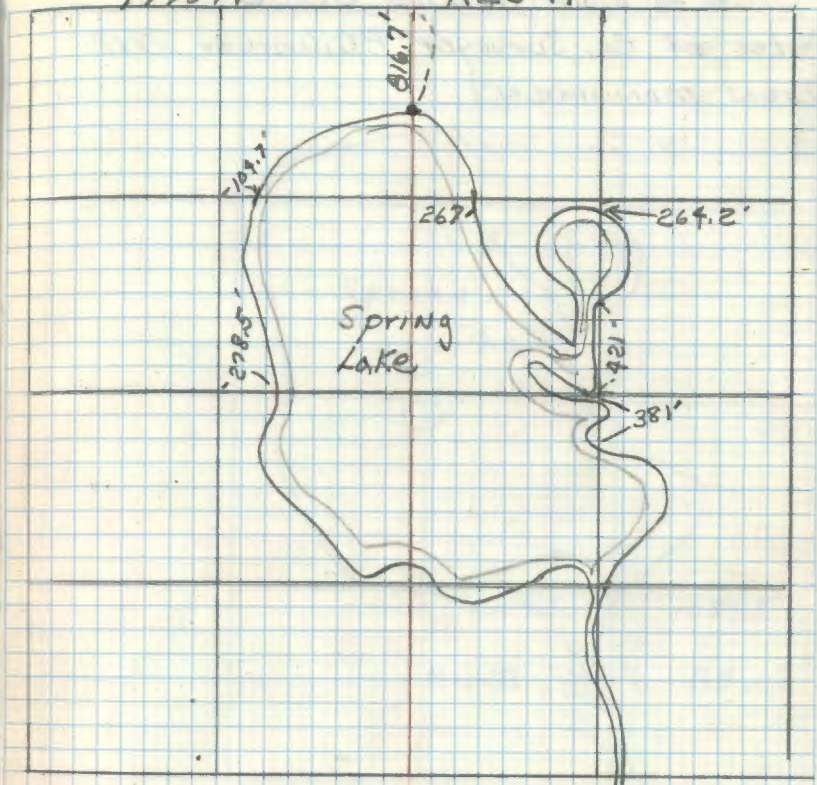
Tam 12° N 42° W 42.0'

Cedar 10° N 38° E 50.7'

R9-5680-11 JHE

T148N

R25W



28

SMC 28.8'S of SE 1/16 Sec B

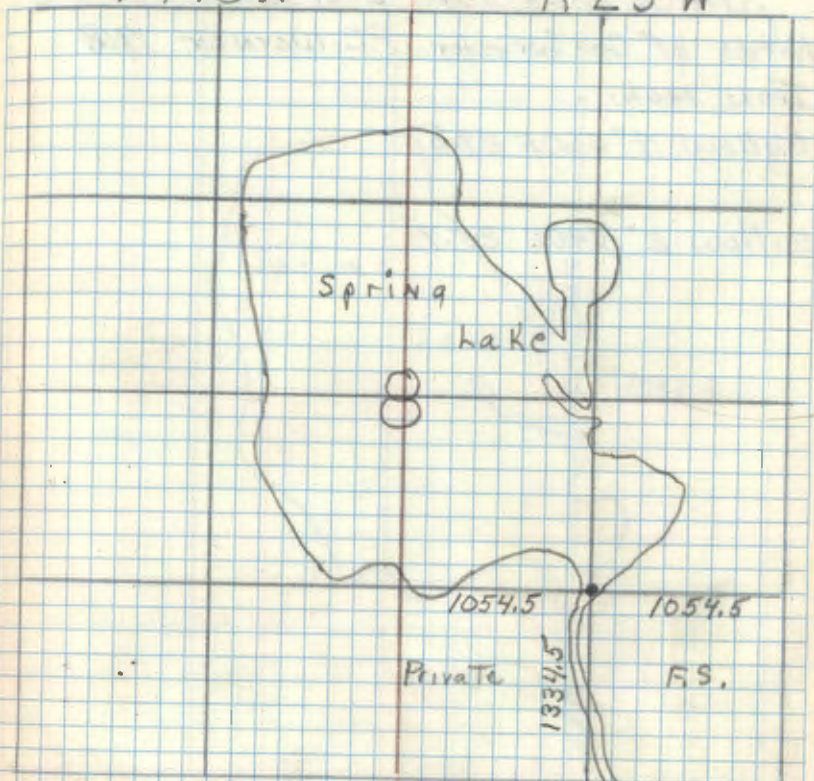
Notes of Co. Surveyor P.C. Warner 1918

Iron monument

R9-5680-11 JME

T148N

R25W



S.M.C. 381.5'S of East Center $\frac{1}{4}$ S. 8

Notes of Co. Surveyor P.C. Warner 1918

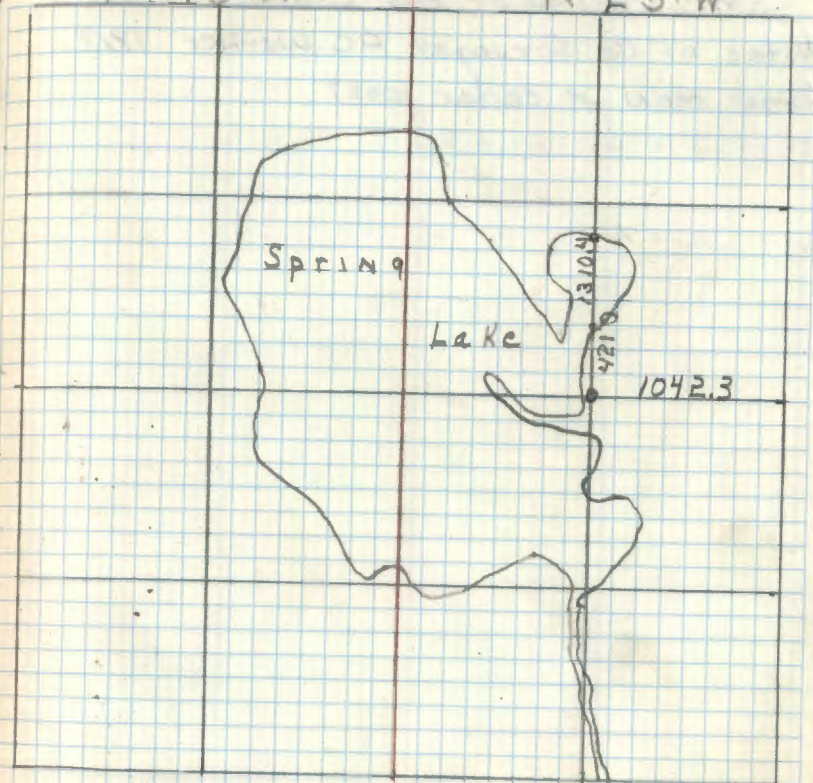
Iron mon.

Willow 7" S60E 29.8'

Willow 2" N40E 25.9'

T 148 N

R 25 W



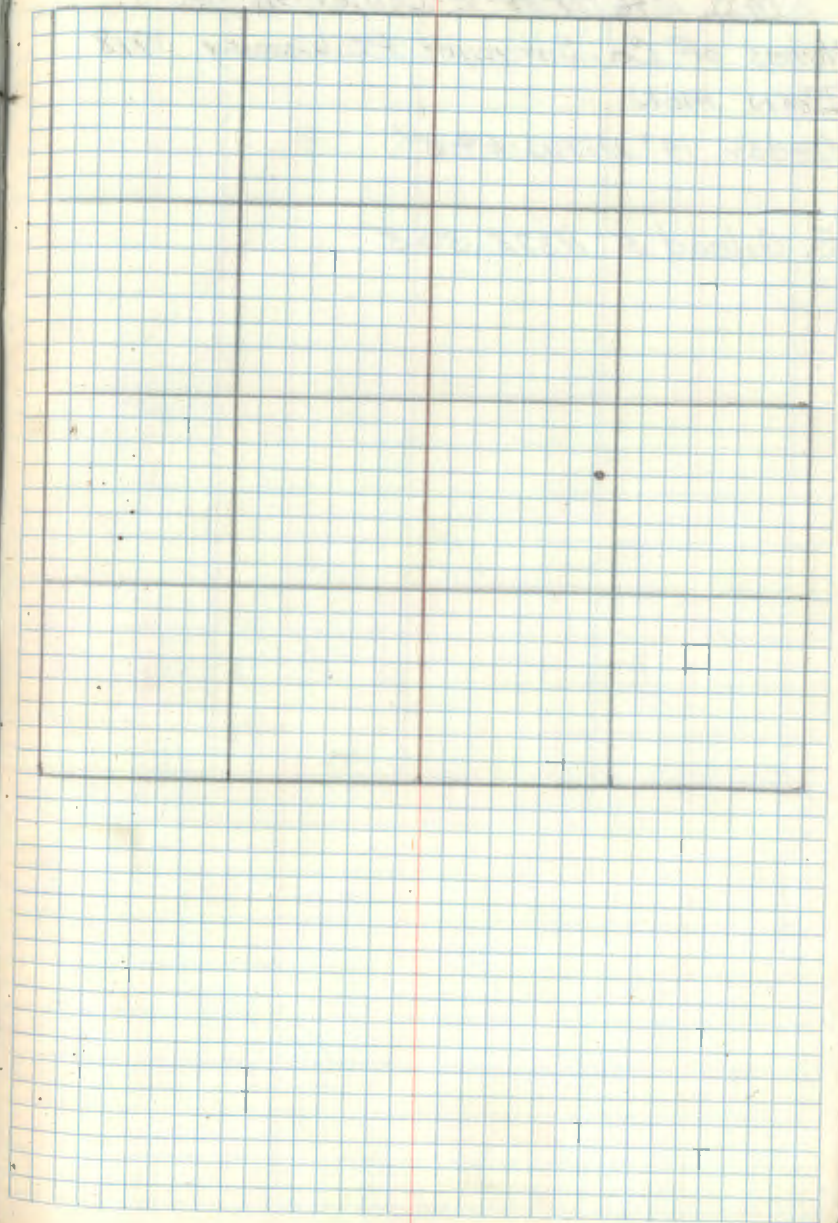
S.M.C. 421' N of East Center $\frac{1}{16}$ Sec. 8

Notes of Co. Surveyor R.C. Warner 1918

Iron mon & cedar post

T148N

R25W



31

S.M.C. 1076' N. of E-Center $\frac{1}{16}$ Sec 8

Notes of Co. Surveyor P.C. Warner 1918

Iron mon.

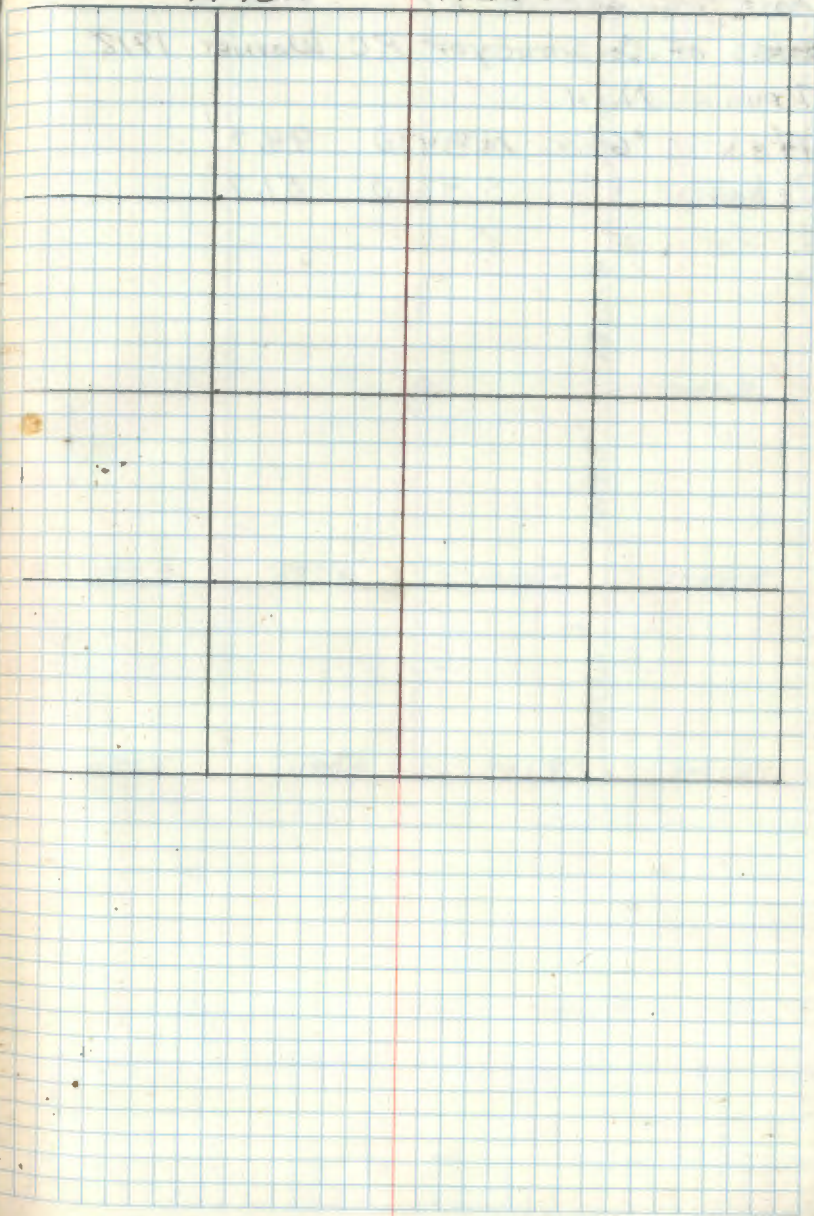
Cedar 19" N17W 69.5'

B. Gilead 5" N37E 50.5'

T148N

R25W

R9-5680-11 JMB



East 1/4 Sec. 8-17

Notes of Co. Surveyor P.C. Warner 1918

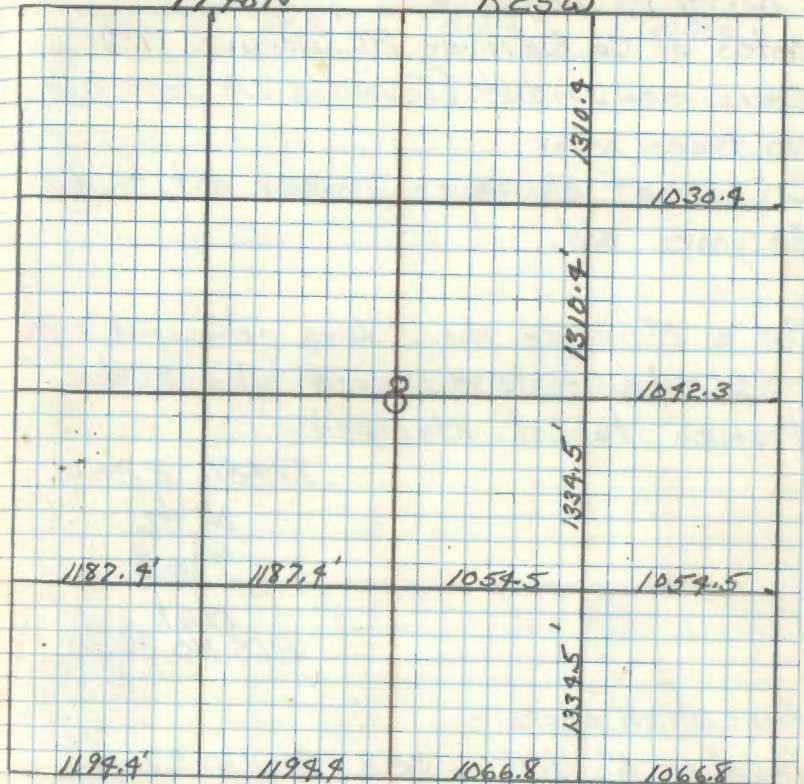
Iron Man

Ash 6" N 84 W 94.7'

Cedar 4" S 42 W 51.7'

T198N

R25W



33

North $\frac{1}{16}$ Sec. 7-B

Notes of Co. Surveyor R.C. Warner 1918

Iron monument. (Found a $1\frac{1}{4}$ " iron pipe.)

NO trees near

Cor. is at old fence corner est. to be
30 years old.Set a 2" inside dia. 5' long galvanized pipe
filled w/ concrete & capped w/ a 3" dia.
bronze tablet stamped:-

T198N R25W

N $\frac{1}{16}$

S7 | S8

1961

RAS NO 362B

From which bears:-

Maple 6" N17W 35.8 MKD N $\frac{1}{16}$ S7 BTMaple 4" S50W 18.0' MKD N $\frac{1}{16}$ S7 BTMaple 7" S52 $\frac{1}{2}$ E 22.6' MKD N $\frac{1}{16}$ S8 BT

6/21/61 R.H. McDonald

5/13/61 by Rorand Olsen

set steel post 8' long North 5.0'

w/ sign 54-29547

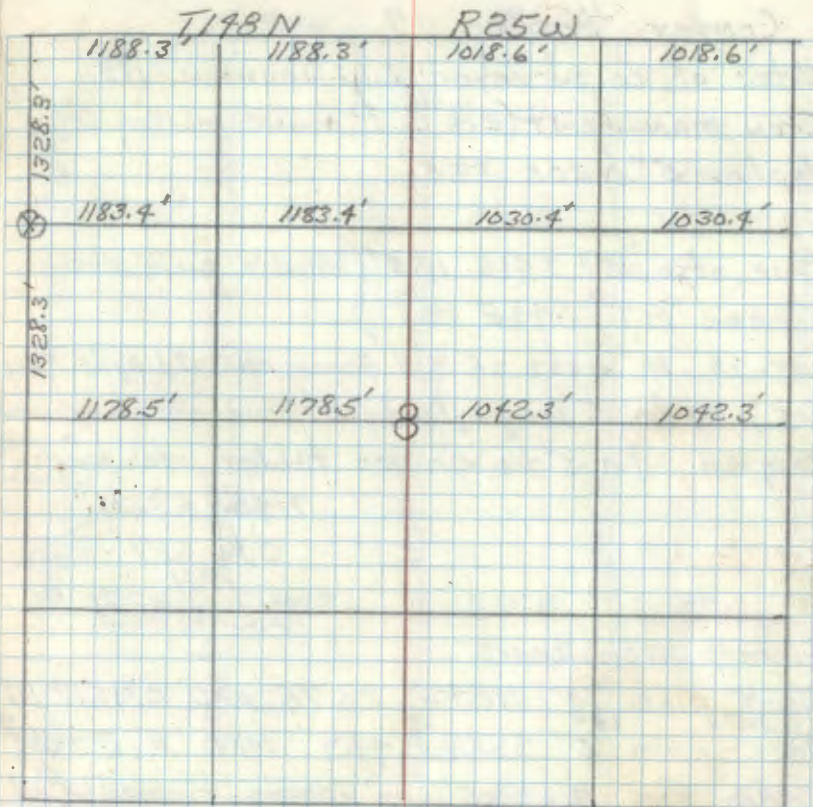
Steel post 8' long East 5.3' w/ sign 54-2

RA-7150-4 by G. Robertson 12/80 and R. Olsen 5/10/91

R9-5680-11 etc

Affidavit made
9/14/61 R.H.M.

*

f.s. poster on 4" birch from
which corner bears S16°W 13.9'

1-3-61

OK

P.A. Wilson

Center 1/4 Sec. 17

Notes of co. surveyor L.W. Johnson 1923
 Iron monument (2 1/4" I.P. found marking Cor.)
 Poplar 5" N20E 39.5'

Pine stp. 15" S41E 19.5' (Now a pine stp.
 Scribbled "BT" S44E 19.5')

Cor. is 15' west of old fence cor. 3/16/61 RHM
 Set a 6" dia. 5' long cylindrical concrete monument
 capped w/ a 3" dia. bronze tablet stamped:-

T148N R25W.

C 1/4 S17

1961.

R.L.S. No. 3628

From which bears:

Jack pine 10" N87°W 26.75' MKD C 1/4 S17 BT
 NOW 13"

Jack pine 5" S38 1/2° E 49.4' MKD X BT LOGGED OFF

Cedar Post 4" x 4" x 5' long - penta-treated w/
 red top North 2.0'

5-15-61 RHM McDonald

To bring this corner to standard E cut new BT

NOW 9" R. Pine 7" N62E 34.17 C 1/4 S17 BT

Steel post 8" North 5.8' w/ sign 54-2

Steel post 8" East 5.9 w/ 54-2 & 54-9

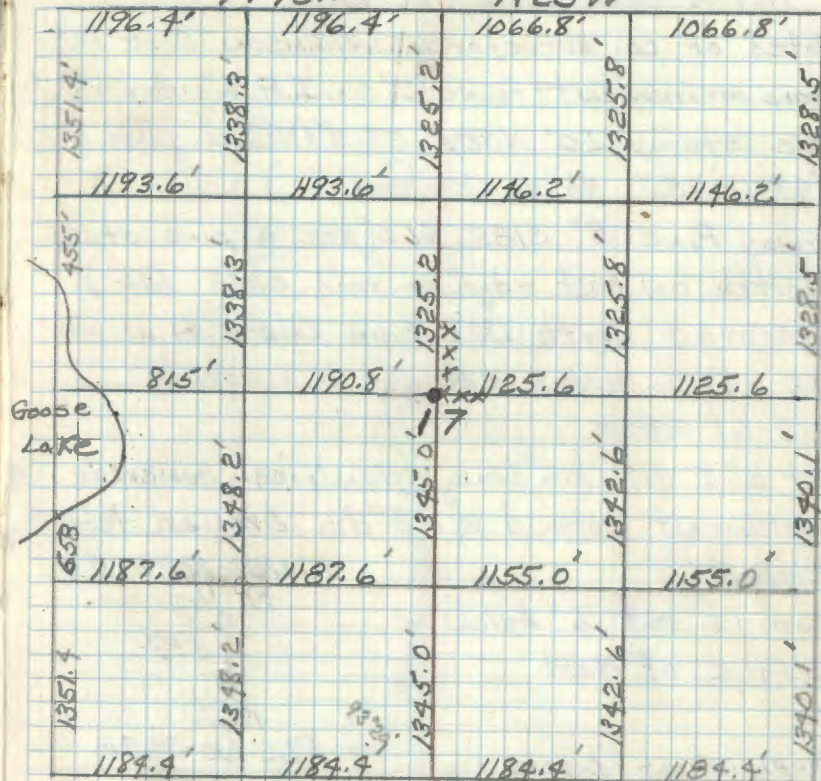
7/14/80

Ronald Olson

RA-7130-4 by Olson

T148N

R25W



Placed F.S. Post on a 5" Balsam from which
 Cor. bears N57°E 19.0'

5-17-05 R MAIN
 GPS IRON

17-13-61
 OK

R.L. Olson

North center $\frac{1}{16}$ Sec. 17

Notes of co. surveyor L.W. Johnson Sept. 1923

Iron monument (Found 2" dia. I.P. 6" under road)

Pine stump 20" N35E 33.3' (Now a pine stp
N43E 35.3' No scribe visible)

Norway Pine 8" S18E 61.0' (Now a pine stump
in ditch on east edge of road S10E 61.0')

measured north 1325' from center $\frac{1}{4}$ as per
call of Co. notes & found this corner

4-7-61 RHM

Set a 6" dia. 26" Long cylindrical concrete
monument capped w/ a 3" dia. bronze tablet
stamped:-

Mon. is set 6" below
surface of Road.

T198N R25W

N $\frac{1}{16}$

517

C

1961

RLS NO 3628

From which bears-

Red pine 12" N68 $\frac{1}{2}$ E 26.3' MKD x BT

Red pine 11" N35W 26.8' " BT

Red pine 10" S33W 37.6' " $\frac{1}{16}$ S17 BT

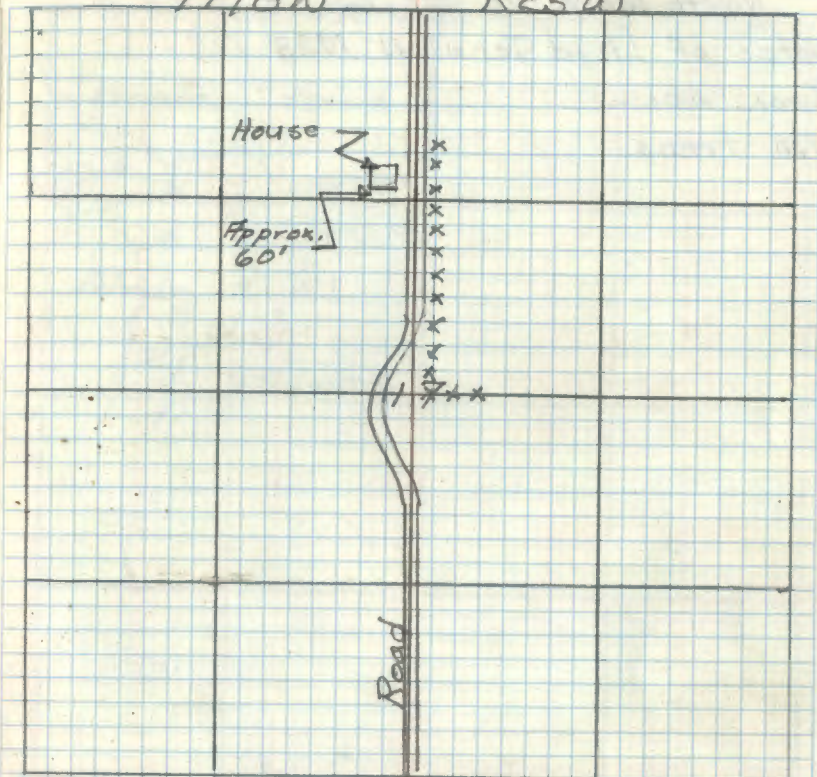
5-16-61 RHM Donald

Olsen
11/6/61

R9-7150-4 by Olsen

T198N

R25W



Placed F.S. Metal Location poster on a
11" Red Pine From which corner bears
N33E 37.1'

5-17-05 R MAIN

GPS IRON & 1961 RPINE N35W 26.8 IS GONE,
FALLS IN PVT YARD AND ROAD ROW

1961 RPINE 19 $\frac{1}{2}$ " S36W 37.57 FT TO SPK ON SE SIDE OF TREE

1961 RPINE 23" N75E 26.47 FT TO SPK UP 3 $\frac{1}{2}$ FT ON
SOUTH SIDE OF TREE

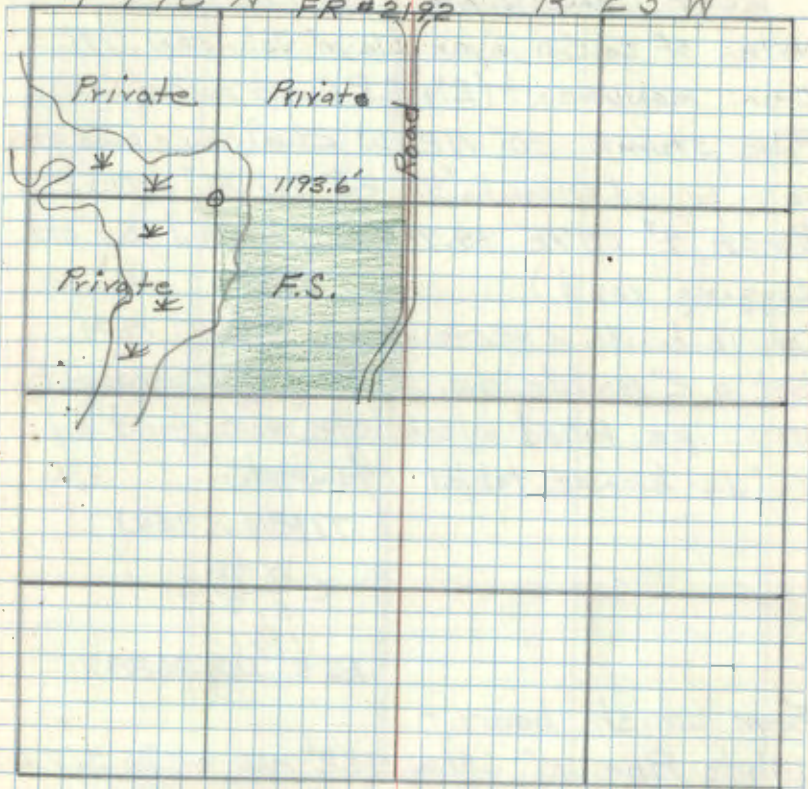
North west 1/16 Sec. 17

Notes of Lloyd Johnson 1923

Iron man.

No trees

T 148 N FR #2192 R 25 W



37

L-6

493

West center 1/16 Sec. 17

Notes of Co. Surveyor Lloyd Johnson 1923

Iron monument (2 1/4" I.P. found marking Cor.)

Pine stump 20" N22W 29.6' (Now a pine stp. partly burned w/scrubs "1/16 #5 S17 BT" N21W 29.6')

Birch 4" S87E 14.9' (obliterated by old logging road)

Cor. is beside a new fence cor. 3/20-61 RHM

Set a 2" inside dia. 5' long gal. wrought iron pipe filled w/concrete & capped w/ a 3" dia. bronze tablet stamped:-

T148N R25W.

$$\begin{array}{r} W \frac{76}{C} \\ C \frac{517}{1961} \end{array}$$

R.L.S. NO 3628

From which bears:-

White Pine 10" S81W 49.2' MKD WC 1/16 S17 BT

White Pine 6" S8E 49.3' " WC 1/16 S17 BT

Red Pine 10" S60E 69.3' " WC 1/16 S17 BT

5/16/61 RHM D. J. D.

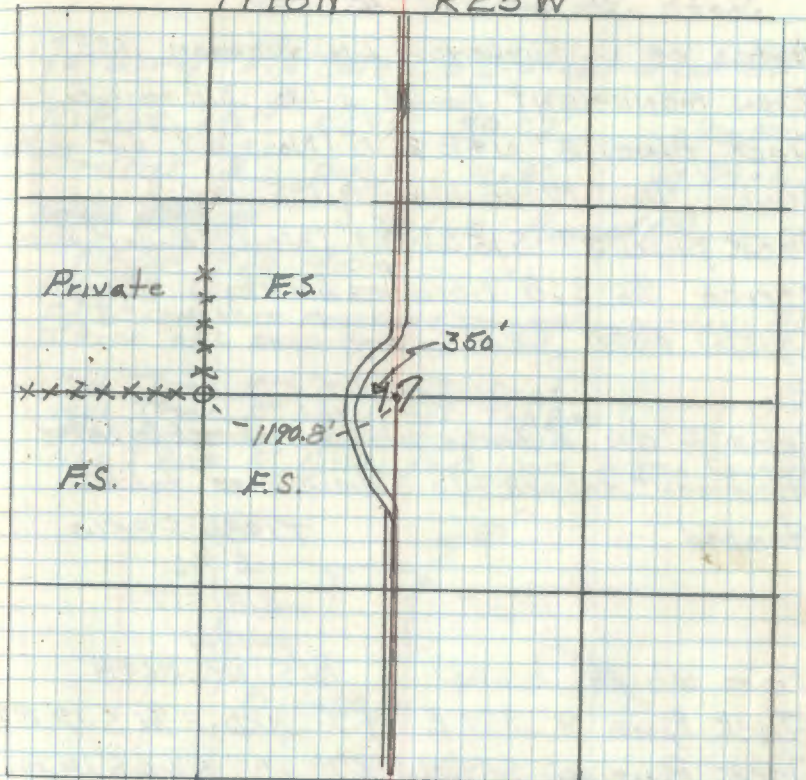
815 west to m.c.

Affidavit 9/11/61 RHM

R9-5680-11 2W

T148N

R25W

Placed F.S. metal location poster on a B" Aspen
From which can bears N44W 28.5'

L-13-61

OK
P. J. D.

South $\frac{1}{16}$ Sec. 17-18

Notes of Co Surveyor L.W. Johnson 1923
 Iron monument (Found a $1\frac{1}{2}$ " I.P. marking Cor.)
 Jack pine 3" N4E 16.0' (Now a 9" J.P. with
 scribe " $\frac{1}{16}$ S 17" visible N11°E 16.0')
 Jack pine 3" S15W 19.1' (Now 12" J.P. with
 scribe " $\frac{1}{16}$ S 18" visible S23 $\frac{1}{2}$ W 19.1')
 3/15/61 RHM

Set a 6" dia. 5' long cylindrical concrete
 monument capped w/a 3" dia. bronze tablet
 stamped:-

T198N R25W
 S $\frac{1}{16}$
 S18/S17
 1961

From which bears:
 Jack Pine 9" S70°E 14.7' MKD S $\frac{1}{16}$ S 17 BT
 Jack Pine 10" S59 $\frac{1}{2}$ W 9.7' " S $\frac{1}{16}$ S 18 BT
 Red Pine 14" N23 $\frac{1}{2}$ W 20.1' " S $\frac{1}{16}$ S 18 BT
 5-15-61 RHM Donald

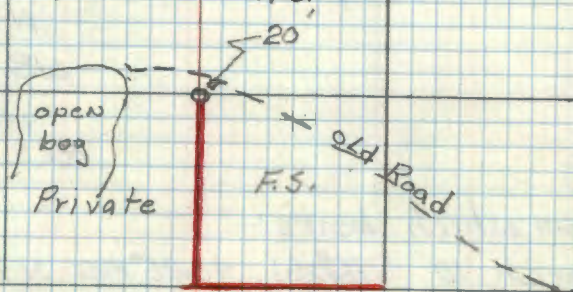
Steel sign post w/ F.S. standard signs
 54-4 & 54-2 attached set South 3.9 Feet
 4-21-67 RHM

Line marked south to section corner & posted
 to F.S. standards. 4-21-67 RHM

T198N

R25W

To bring this corner to standard I cut BT.
 R. Pine 10" S69W 30.07' S $\frac{1}{16}$ S 18 BT
 Steel Post 8' west 4.8' w/ 54-2
~~Steel Post~~ 7/3/80 Road Clear
 11/6/73 Co KRAUSE
 Ed 6" CONCRETE MONUMENT IN GOOD CONDITION 1923
 J PINE ARE DEAD ONE IS DOWN.
 18 1961 J PINE 10" S70E 14.07 DEAD 17
 1961 J PINE 10" S54W 9.07 TOP BAD
 1961 R. PINE 16" N23W 20.01 LIVE
 1961 J. PINE 10" N11E 16.00 LIVE ROTTEN CENTER
 F.S. F.S.



F.S. Post is on a 10" J.P. Pine from which
 Cor. bears N55°E 9.0'

12-13-61
 OK
 R. A. Walker

North $\frac{1}{16}$ Sec. 17-18

Notes of L.W. Johnson 1923

I. wood post

NO trees

Iron monument (Found a $1\frac{1}{4}$ " iron pipe
beside old fence line, by chaining East
from the NE $\frac{1}{16}$ of Sec. 18 as per Co. Notes

Set a 6" dia. 5' Long cylindrical concrete
monument capped w/ a 3" dia. bronze
tablet stamped:

T148N R25W

N $\frac{1}{16}$

S18 | S17

1961

R.L.S. NO. 3628

From which bears:-

Birch 10" S16 $\frac{1}{2}$ W 40.25' MKD N $\frac{1}{16}$ S18 BTCedar post 4" x 4" x 6.5' pent-a-treated
& w/ red top West 3.1'

6/20/61 R.H. McDonald

To bring this corner to standard I cut New BT

Ash 6" S 3' W 94.50' N $\frac{1}{16}$ S18 BTR. Pine 12" S30E 110.15' N $\frac{1}{16}$ S18 BT

Steel post 8' south 3.2' W/54-2 & 54-9

Steel post 8' West 5.3' W/54-2

89-7150-4 by Olsen

7/7/80
Ronald Olsen

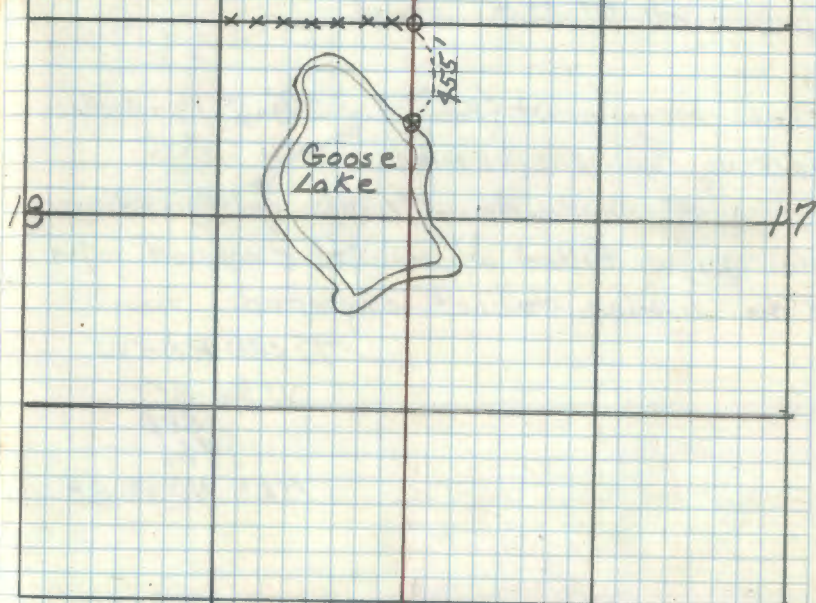
T148N

R25W

11/8/73 C. KRAUSE

Fd 6" CONCRETE Cyl in place 20" ABOVE GROUND.

1961 BREAKING OBJECTS OK.



F.S. Poster is on 4x9 Cedar post 3.1'
West of Corner.

12-24-61
OK
P.G. Walker

40

N-0

West 1/16 Sec. 17-20

Notes of L.W. Johnson 1923

W. Pine stp. 8" S67E 44.2' (Now W. Pine stp.

w/ scribe "W 1/16 S20 BT" visible S57 1/2 E 44.2'

Spruce st. 7" S35W 32.1'

Iron monument (Found a 2 1/4" I.P. in place
marking Cor. 3/16/61 RHM)Set a 2" inside dia. 5' Long galvanized wrapped
iron pipe Filled w/ concrete & capped w/ a
3" dia. bronze tablet stamped:

T148N R25W

W 1/16 S17

S20

1961

RLS NO 362B

New B.T.s

Tam. 10" N59W 25.05' MKD W 1/16 S17 BT

Tam 8" S25W 34.1' " W 1/16 S20 BT

Tam 7" N43 1/2 E 11.3' " W 1/16 S17 BT

5-16-61 RHM Donald

Steel sign post 1/2" long w/ FS standard signs

S4-2 & S4-4 attached set West 3.6 Ft

line marked and posted to F.S. standards - West to
sec. Corner. 4-24-67 RHM

R9-5680-11 JHE

RFA davit 9/11/61 RHM

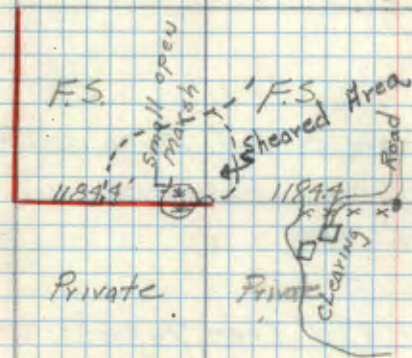
*

T148N 17 R25W

Set steel post 8" East 4.6' w/ sign

R9-7150-4 by Olesen 7/14/80

Ronald Olesen



20

Placed F.S. faster on a 9" white Pine from
which cor. bears S83°E 70'12-13-61
OK
R.A. Johnson

East 1/16 Sec. 17-20

Notes of L.W. Johnson 1923

Iron mon.

Birch 7" S85W 26.9'

Birch 4" N28E 26.5'

chained East 1187.9' from 1/4 Cor 17-20 searched
2 hrs along east edge of pine plantation - No
evidence found 4-7-61 RRM

7/15/80 Chained East 1184.4' from 1/4 Cor 17-20
found 2" x 18" Iron pipe 12" below ground
in swamp. found stump mound N89W 26.9'
and N34E 26.5' Ronald Olson

To perpetuate this corner I set a
2" x 5" Gal Iron pipe with Brass
cap marked

From which Bears

Birch 6" N47E 17.36'

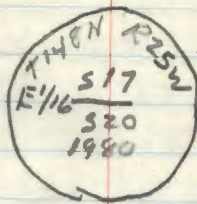
Aspen 6" S72E 25.60'

Ash 4" S64E 44.40

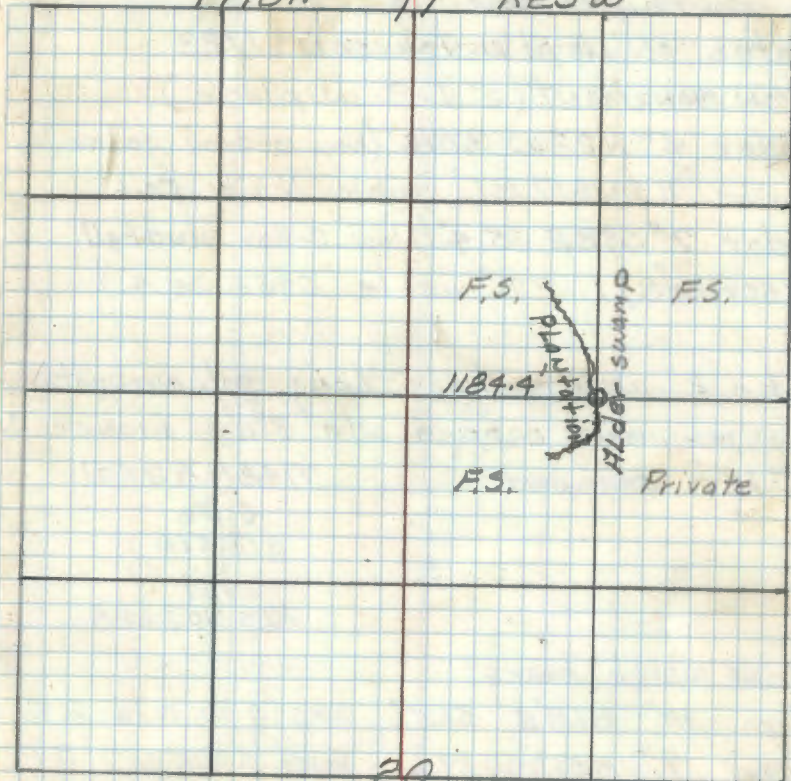
Steel post 8' East 119' w/sign 54-2 & 54-9

Steel post 8' South 210' w/sign 54-2

RR-7150-4 by Oleson

7/16/80 Ronald Olson

T14BN 17 R25W



North $\frac{1}{16}$ Sec. 16-17

Notes of Lloyd Johnson Sept. 1923

Iron monument (Found in place under road)

Pine stp. 12" N18W 36.8'

W. Pine stp. 10" S37E 34.9'

Chained north from $\frac{1}{4}$ Cor along Co. road 1325.8' as per call of Co. notes. Searched 1 hr. but no evidence found. Searched again 7/4/61 & found a 1 3/4" iron pipe buried in road checks ok for dist. from $\frac{1}{4}$ Cor.

Set a 6" dia. 26" long cylindrical concrete mon. capped w/ a 3" dia. bronze tablet stamped:-

T198N R25W

N $\frac{1}{16}$

S17 | S16

1961

R.L.S. NO 3628

Note (monument is buried 6" under road surface)

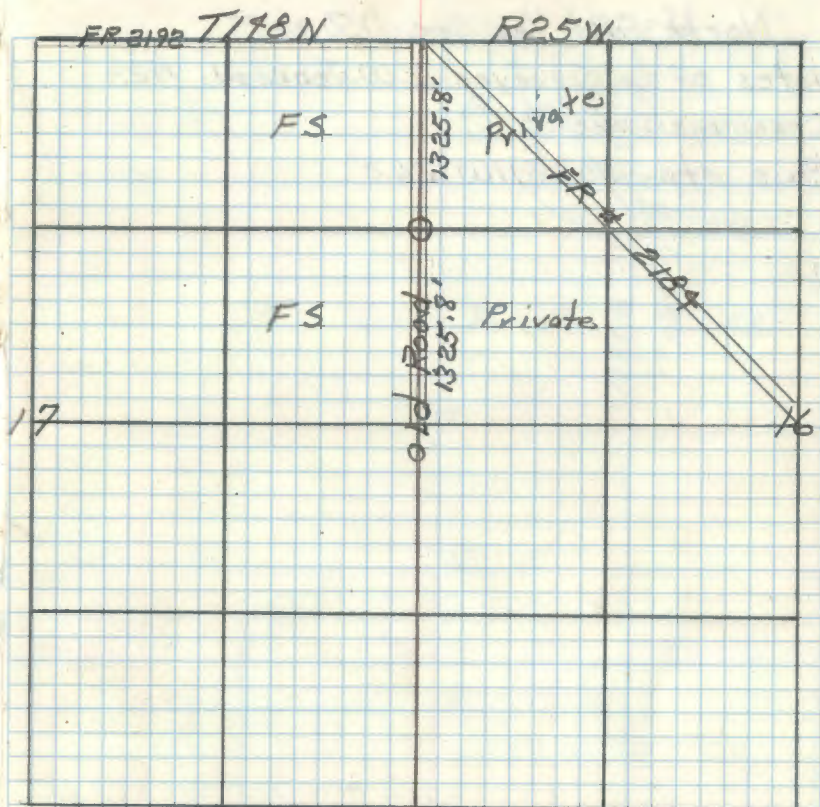
From which bears:-

Red Pine 13" N43 $\frac{1}{2}$ W 33.1' MKD N $\frac{1}{16}$ S17 BTRed Pine 13" S26 $\frac{1}{2}$ E 48.8' MKD N $\frac{1}{16}$ S16 BT

7/10/61 R.H. McDonald

R.H. McDonald
7/10/61

affidavit made
9/11/61 R.H.M.



Placed F.S. metal location poster on the 13" Red Pine BT from which corner bears S43E 32.5'

45

L-8

East center 1/16 Sec. 17

Notes of Co. Surveyor L. W. Johnson 1923

Iron monument (#2" pipe w/ pipe "T" on top)

Pine stp. 15" N45 1/2 W 47.6' (Now a pine stp
N36 W 47.6' no scribe visible)Pine stp 8" S65 1/2 W 65.2' (Now a down snag
w/ scribe "1/16" RT" visible S29 W 65.2')found a squared post beside pipe & old fence
line passing over corner E-WSet a 2" inside dia. 5' long gal. wrought iron
pipe filled w/ concrete & capped w/ a 3" dia.
bronze tablet stamped:-

T148N R25W

E 1/16 E
S17RLS ¹⁹⁶¹ NO 3628

From which bears:-

Jack Pine 10" N36 E 30.6' MKD EC 1/16 S17 BT

Jack Pine 10" S8 1/2 W 46.4' " EC 1/16 S17 BT

Jack Pine 12" S45 W 61.8' " EC 1/16 S17 BT

5/16/61 ~~RT~~ Donald

Set steel post 8' west 8.5' w/sign 54-2 of 54-9

7/14/80

Ronald Olson

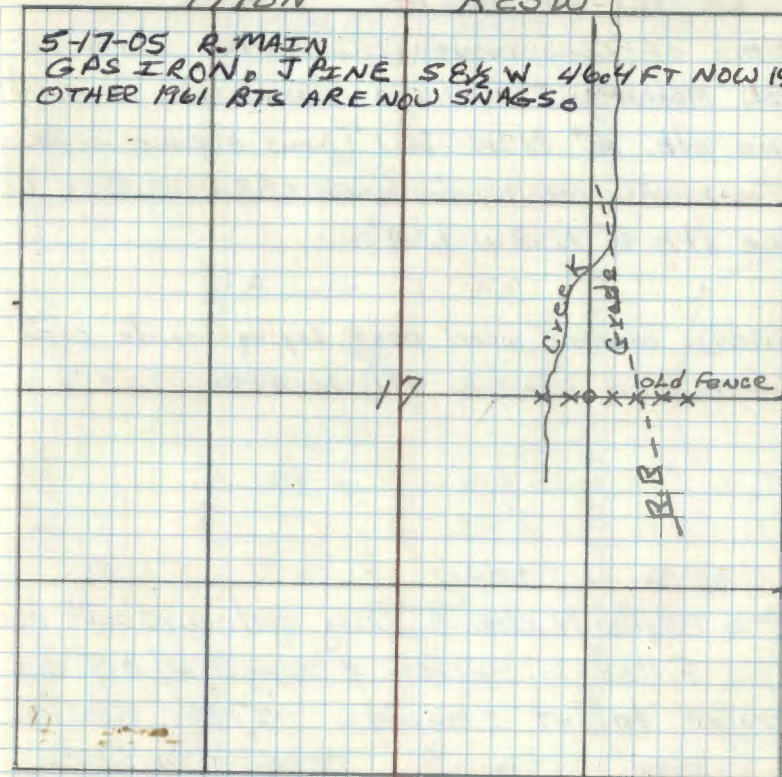
A-7150-4 by Olson

R9-5660-11 JM

affidavit made
9/11/61 RHM

T148N

R25W

5-17-05 R. MAIN
GAS IRON. J PINE S8 1/2 W 46.4 FT NOW IS 10
OTHER 1961 RTS ARE NOW SNAGSPlaced a F.S. Poster on a 13" W. Spruce from
which cor bears S48W 10.5'12-13-61
OK

R. G. Walker

47

K-3

North center 1/16 Sec. 18

Notes of Co. Surveyor P.C. Warner March 1927

Iron mon. (Found 1 1/2" I.P. marking cov.)

J. Pine 12" S83E 43.7' (Now a white pine w/
scribe 1/16" #2 visible S75E 43.7' - ^{Tree is wind} tipped)

Poplar 14" N25W 106.5' (Not Found)

Found by chaining South from 14 Cov. 7-18
1120' as per co. notes 3/15/61 RHMSet a 2" inside dia. 5' Long gal. wrought
iron pipe filled w/ concrete & capped w/ a
3" dia. bronze tablet stamped:-

T148N R25W

N 1/16 S 18
C

RLS NO 3628

From which bears:-

Aspen 10" N21 1/2 E 23.83' MKD N.C. 1/16 S 18 BT

Cedar post 4" x 4" x 6.5' penta-treated w/
red top South 3.8'

6/26/61 A.H. McDonald

11/8/73 C. KRAUSE

Fd IRON IN PLACE IN GOOD CONDITION 20" ABOVE
GROUND. NORTH END OF SMALL GRASS MEADOW. OPEN MARCH

200 FT NORTH OF CORNER. WITNESSED BY:

ASPEN 13" N21E 23.8 SCRIBER OPEN

ASPEN 12" S29E 7.0 FSLP

R9-5680-11 H.C.

affidavit made
9/11/61 RHM

*

T148N

R25W

Private

F.S.

Private

F.S.

18

To bring this corner to standard \pm cut BT

Aspen 8" N36W 43.43' CN 1/16 S 18 BT

Birch 4" S52W 28.74' 1/16 S 18 BT

Maple 4" S8W 44.86' CN 1/16 S 18 BT

Steel post 8" South 6.4' w/sign 54-2

Steel post 8" North 4.0' w/sign 54-2
54-9

R9-7150-4 by Olesen 7/8/80

Ronald Olesen

Placed F.S. post on a 7" Aspen from which
Cov. bears N29W 7.0"12-12-61
Ox
R.G. [Signature]

48

L-2

West Center 1/16 Sec. 18

Notes of Co. Surveyor P.C. Warner 1927

Iron mon. (Found 1 1/4" I. Pipe marking Cor.)

Tam. 7" S32W 22.9' (Now decayed Tam. stp. S30W 22.9')

Tam. 7" S66E 43.7' (Now decayed stp S57E 43.7')

Search time 3 hours 4-10-61 RHM

Set a 2" inside dia. 5' long gal. wrought iron pipe filled w/ concrete & capped w/ a 3" dia. bronze tablet stamped

T198N R25W

W 1/16

C 518

1961

RLS NO 3628

From which bears:-

Black spruce 8" S42°E 41.2' MKD WC 1/16 S18 BT

White spruce 8" N38E 73.65' MKD WC 1/16 S18 BT

Cedar Post 4"x4"x 6 1/2' penta-treated & w/ red top - West 4.3'

5/17/61 RHM/Dard

To bring this corner to standard I cut BT2

B. Spruce 8" N37W 44.12 CW 1/16 S18 BT

Steel post 8" N82W 5.8' w/ 54-2

Steel post 8" S82E 4.9' w/ 54-2

7/8/80

Ronald Olson

affidavit made RHM
9/12/61

*

T198N

R25W

11/15/73 C. Krause

Fd 2" Iron in place in good condition 16" ABOVE GROUND - WITNESSED WETH:

1961 W. Spruce 11" N38E 73.65 FT SCRIBE CLOSED

1961 B. Spruce 9" S42E 41.2 FT SCRIBE OPEN

Private Private

old few posts
Swamp
13

Placed FS. Post on a 6" Aspen from which
Cor bears N23°E 12.5'12-14-61
OK

R. A. Holden

North 1/16 Sec. 18-13

Notes of Co. Surveyor P.C. Warner 1927

Tam 7" N66W 45.8' (Now a tam stp. mostly decayed w/ flat blaze facing cor. N55W 45.8')
 Cedar 8" S44W 48.5' (Now a partly decayed cedar stp. w/ scribe "BT" visible S58W 48.5')
 Cor. was found to be marked with a squared post scribed "N 1/16 S" at old fence corner 8/14/61
 Iron mon. (Found 6" under ground a 1" iron pipe marking corner)

Set a 2" inside dia. 5' long gal. wrought iron pipe filled w/ concrete & capped w/ a 3" dia. bronze tablet stamped:-

T198N
 R26W R25W
 N 1/16
 S13/S18
 1961
 RLS NO 3628

From which bears:-

44.2' R.A.U.

W. Spruce 9" S74W ~~42.25'~~ MKD N 1/16 S13 BTBirch 5" S15 1/2 E ~~42.75'~~ " X BT

Cedar post

42.75'
R.A.U.

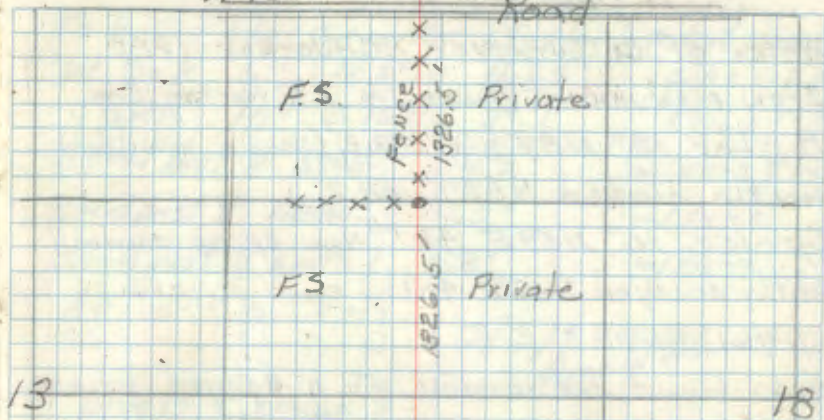
6/2/61 A.H.M. Donald

#Ffidavit made 9/13/61
R9-5680-11 HU

T198N

R25W

Road



Placed F.S. Location poster on a 3" Balsam
 from which cor. bears N60E 23.5'

12-14-61
 EXCEPT DISTANCES
 OF BT'S WERE REVERSED
 TO

P.C. Warner

See Book 3, PP 5

South $\frac{1}{16}$ Sec 18-13

Notes of Co. Surveyor P.C. Warner 1927

Iron monument (Found $1\frac{1}{4}$ " I.P. Marking Cor.)Poptar 12° N $89\frac{1}{2}^{\circ}$ W $58.2'$ (Now a windfall mostly decayed N 83° W $58.2'$)Spruce 10° N 59° E $41.1'$ (Now spruce windfall partly decayed N 67° E $41.1'$)

3/17/61 RHM

Also found the remains of a squared scribed post laying beside corner. corner is an an old brushed out North-South line est. to be 30 years old or older.

Set a 2" inside dia. 5' long galvanized wrought iron pipe filled w/ concrete and capped w/ a 3" dia. bronze tablet stamped

T198N
R26W R25W
S $\frac{1}{16}$
S13 | S18

From which bears

1961
PLS NO 3628Tamarack 10° S 31° E $28.0'$ mko S $\frac{1}{16}$ S18 BT" 6° S $8\frac{1}{2}^{\circ}$ W $65.85'$ mko S $\frac{1}{16}$ S13 BTBlack Spruce 12° S 80° W $38.75'$ mko S $\frac{1}{16}$ S13 BT

11-29-61 R.H. McDonald

R26

R25

To bring this corner to standard & cut new BT.

W. Oak 6° N 2° W $11.25'$ S $\frac{1}{16}$ S13 BTTamarack 10° S 16° E $39.1'$ S $\frac{1}{16}$ S18 BTSteel post $8'$ S 80° E $4.2'$ W/54-2 S/54-9Steel post $8'$ N 80° W $4.5'$ W/54-2Steel post $8'$ south $3.8'$ W/54-2

R9-7150-4 by Jessen

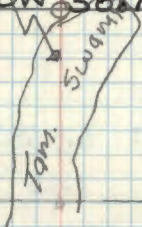
7/3/80
Ronald Olson

13

11/19/73 C. KRAUSE

Fd 2" DIA IRON PIPE 22" ABOVE GROUND. WITNESSED BY

18

1961 TAMARACK 9° S 8° W $65.8'$ FT SCRIBE OPEN1961 TAMARACK 11° S 5° E $28.0'$ FT BLINDDOWN1961 B. SPRUCE 13° S 80° W $38.75'$ FT TOP BROKEN OFF.

Placed F.S. metal location poster on a 5" Aspen

From which can bears N 80° E $9.4'$

14-13-61
OK
R.H. McDonald

West 1/16 Sec. 18-19

Notes of Co. Surveyor P.C. Warner 1927

Iron mon. (1 1/4" I.P. Found marking corner)

Spruce 14" N70E 34.2 (Now w. Spruce stub w/
scribe "6 S188" visible N81E 34.2'Spruce 12" N45W 24.3 (Now a 16" w. Spruce
w/ scribe "1/16 S18 BT" visible N35W 24.3'Set a 2" inside dia. 5' Long galvanized wrought
iron pipe filled w/ concrete & capped w/ a
3" dia. bronze tablet stamped

T148N R25W

W 1/16 S18
S19

1961

R.L.S. NO 3628

From which bears

Oak 14" N80W 62.35' MKD W 1/16 S18 BT

Ash 8" N11E 17.5' MKD S18 BT

11-30-61 R.H. Mr. Donald

11-19-73 Cut Krame

FOUND IRON IN PLACE

OAK BT. OK IRON IN HEAVY BRUSH

ASH BROKEN OFF

NO SIGN POST OR SIGNS.

PAINTED LINE FROM S.C. TO THIS COR.

T148N

19

R25W

To bring this corner to standard I cut New BTS

Ash 6" N7E 5.46'

w/1/16 S18 BT

w/oak 8" S68E 31.25

w/1/16 S19 BT

Steel post 8' S75E 8.9'

w/54-2

Steel post 8' N75W 3.2'

w/54-2 & 54-9

Private

Private

7/3/80 Road clear
R9-750-4 by OlsonAspen type
#51

F.S.

F.S.

19

Placed F.S. Metal Location poster on 16" Spruce
BT from which cor bears S35E 24'12-13-61
O.K.

R.A. Walker

SW 1/16 Sec 18

M. 2

Notes of P.C. Warner 1927

Iron - NO trees (Found scribed Post 1/16 #
S 18" & I.P. marking corner - Found by
chaining East from S 1/16 - 18-13 on an old brushed
line 1732' as per call of County notes 3/17/61 RHM

Set a 2" inside dia. 5' Long galvanized
wrought iron pipe filled w/ concrete &
capped w/ a 3" dia. bronze tablet stamped

T198N R25W

S W 1/16 S 18

1961

RLS NO 3628

From which bears

Tamarack 6" N89°W 46.3' MKD S18 BT

" 4" S85°E 58.9' " X BT

Cedar post 4" x 4" x 6.5' pent-treated & w/
red top West 2.0'

11-29-61 R.H. McDonald

11-15-73 CURT KRAUSE

FOUND IRON IN PLACE BT'S OK

4x4 IN GOOD SHAPE NEEDS SIGNS

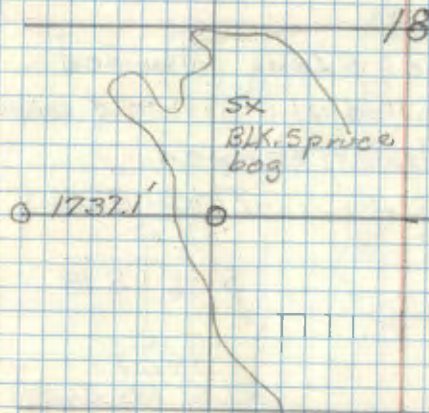
LINE PAINTED E-W FROM COR.

T198N

R25W.

To bring this corner to Standard I cut new ST.
Tarm 6" S45E 32.38' SW 1/16 S 18 BT
Steel post 8' S80E 5.4' W/54-2
Steel post 8' N80W 4.4' W/54-2 & 54-9

7/3/80 Ronald Olson



Placed F.S. Poster on a 6" Tarm. From which
Cork bears S89°E 46.0'

12-13-61
OK

R.A. Olson

53

Affidavit RHM
01-73

South Center 1/16 Sec 18

Notes of P.C. Warner March 1927

Iron (1 1/4" I.P. found in place marking corner)

Spruce 6" S61W 20.8'

Spruce 6" N91E 24.0' (Now a decayed spruce
spr N53E 24.0')Set a 2" inside dia. 5' long galvanized
wrought iron pipe filled w/ concrete & capped
w/ a 3" dia bronze tablet stamped

T198N R25W

S 1/16 S 18

1961

RLS NO 3628

From which bears

Black spruce 6" S38°E 6.5' MKD S 18 BT

" " 7" N35°W 8.9' MKD S 18 BT

Tamarack 6" S64°W 32.3' MKD S 18 BT

11-29-61 RHM Donald

11-15-73 CORT KRAUSE

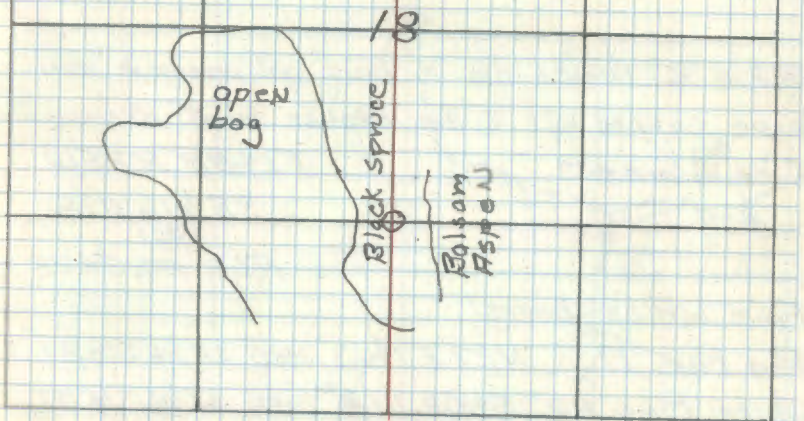
FOUND IRON IN PLACE BT'S OK

NEEDS SIGN POST & SIGNS.

LINE PAINTED E-W FROM COR.

R9-5680-11 JH

T198N R25W

5-t. steel post 8' N80W 5.5' w/ 84-2
steel post 8' East 7.3' w/ 84-2 & 84-9
19-7150-4 by Olson 7/3/80 Ronald OlsonPlaced P.S. Metal Location poster on a 6" B.
Spruce from which cor. bears S34°E 8.6'12 + 13.6'
OK
P.D. Walker

59

M-4

South East $\frac{1}{16}$ Sec. 18

Notes of P.C. Warner March 1927

Iron monument (Found $1\frac{1}{4}$ " I.P. marking corner)

W. Pine 10" S58E 111.5' (Now a 22" W. Pine

w/blaze facing Coy. S48 $\frac{1}{2}$ °E 111.5')

Birch 8" S73W 41.1'

3/17/61 RHM

Set a 2" inside dia. 5' long gal. wrought iron
pipe capped w/a 3" dia. bronze tablet stamped:-
Filled w/ concrete

T198N R25W

S.E. $\frac{1}{16}$ S18

1961

P.L.S. NO. 3628

From which bears:

Red Pine 17" N27°E 146.3' MKD SE $\frac{1}{16}$ S18 BTWhite Pine 22" S48°E 111.8' MKD SE $\frac{1}{16}$ S18 BTCedar Post 9" x 4" x 6 $\frac{1}{2}$ " penta-treated & Red topped

West 2.2' 5/15/61 RHM

To bring this corner to standard I cut new BT^EMaple 6" N66E 18.85' SE $\frac{1}{16}$ S18 BTBirch 7" N10E 38.1' SE $\frac{1}{16}$ S18 BT

Steel Post 8' East 4.6' w/54-2

7/3/80 Ronald Olsen

M-750-4 by Olsen

R9-5680-11 affidavit made 9/13/61 RHM

JHE

*

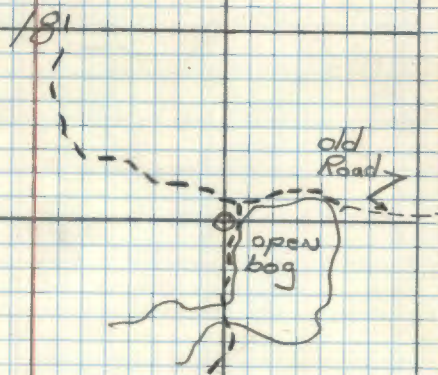
T198N R25W

11/6/73 C. KRAUSE

FD 2" IRON PIPE IN PLACE IN GOOD CONDITION 8"
ABOVE GROUND. 80' WEST OF WOODS ROAD AND
APPROX 130 FT WEST OF OPEN GRASS MEADOW.

1961 R PINE 19" N27E 146.3'

1961 W PINE 25" S48E 111.8'



Placed F.S. Poster on a 7" Birch from which
Coy bears N54°W 8.8'.

12-13-61
84
C.A. Wheeler

55

East 1/16 Sec. 18-19

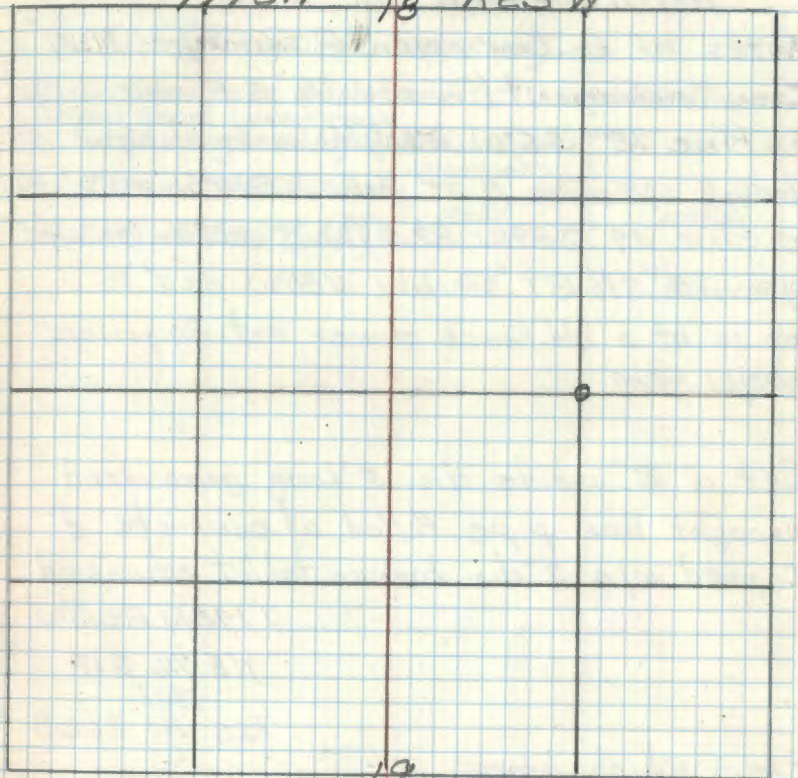
Notes of Co. Surveyor P.O. Warner 1927

Iron monument

Spruce 3" S26°E 23.0'

R9-5680-11 JTB

T198N 18 R25W



North East 1/16 Sec 18

Notes of Co. Surveyor P.C. Warner 1927

Iron monument (Found a 1/4" I.P. marking Cor.)

W. Pine 12" S5°W 51.2' (Now a stump)

windfall w/ scribe "18 BT" visible S12°W 51.2')

W. Pine 14" S89°W 83.3' (Now W. Pine stump)

w/ scribe "S18 BT" visible N80°W 83.3')

Cor. is at a old fence corner est. 30 yrs. old

3/20/61 RHM

Set a 2" inside dia. 5' Long galvanized
wrought iron pipe filled w/ concrete &
capped w/ a 3" dia. bronze tablet stamped

T148N R25W

NE 1/16 S18

1961

RLS No 3628

From which bears:

Tam. 11" N55E 42.85' MKD NE 1/16 S18 BT

Tam. 14" S45E 32.6' MKD NE 1/16 S18 BT

6/26/61 RHM Donald

To bring this corner to standard I cut New BT

Tam. 15" N22E 38.35' NE 1/16 S18 BT

Steel Post 8' East 5.1' w/ 54-25' 54-9

7/7/80 Ronald Olson

R9-7150-4 by Olson

T148N

R25W

C. Krause (No date on corner cap)

Fd 2" Iron Pipe in place F.S.

Private

AND IN GOOD CONDITION

20" ABOVE GRASS slough

Small open

Fence

1961 TAM 12" N55E 42.8

meadow

1961 TAM 16" S45°E 32.6

1298.5'

1298.5'

F.S.

F.S.

Placed F.S. metal location post on a 7"

Aspen from which cor. bears N45°E 27.8'

12-14-61
OR
P.A. Johnson

57 K.L-5

M.C. Sec 17-18 North bank Goose Lake
Notes of Co. Surveyor P.C. Warner 1927
Iron monument

N. Pine 5" N83E 16.9' (Now a 15" Red pine
w/ scribe mostly grown over S88E 16.9'

N. Pine 12" S61E 104.7' (Now a pine stp. w/
scribe "M.C. S17 BT" visible S51E 104.7

Set a 2" inside diameter 5' long gal. wrought
iron pipe filled w/ concrete & capped
w/ a 3" dia. bronze tablet stamped:-

T148N R25W

S18 | S17

M.C.

1961

R25 NO 3628

From which bears:-

Red Pine 6" N29E 15.25' MKD MC S17 BT

Red Pine 10" N23 1/2 W 29.25' " MC S18 BT

6/20/61 R.H. McDonald

set steel post 8' North 4.9' w/ 54-2

7/7/80 Ronald Olson

A9-7150-4 by Olson

affidavit made 9/18/61 RHM

R9-5680-11 JME

T148N

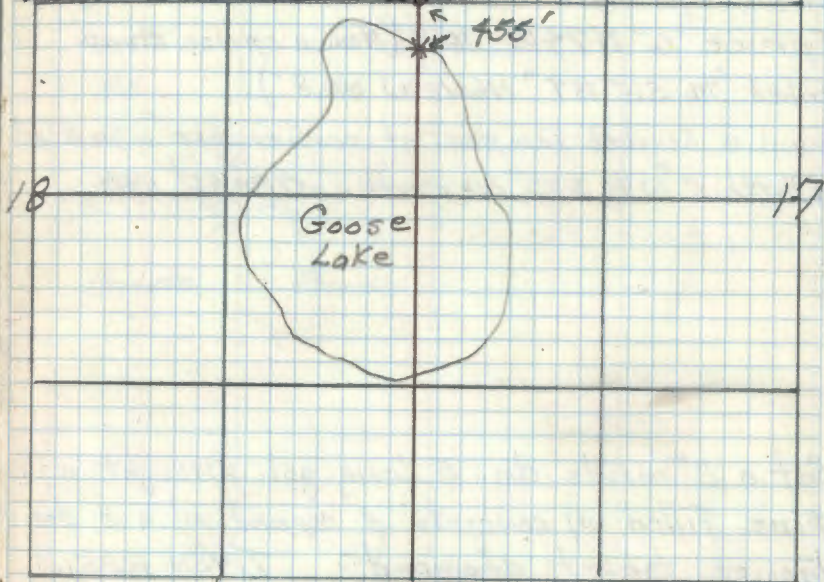
R25W

C. KAUSE (NO DATE ON CORNER CARD)

Ed 2" IRON POST 24" ABOVE GROUND WITNESSED WITH:

1961 R. PINE 8" N29E 15.25

1961 R. PINE 11" N23W 29.25



12-14-61
O.K.
P.A. Wilson

58

N-14

West 1/16 Sec. 15-22

Notes: of P.C. Warner Aug. 1921

Iron monument (Found a 1" iron pipe marking corner)

Spruce 10" S 21° E 20.0' (Now a spruce stp. mostly decayed w/ BT scribe mark visible S 12° E 20.0')

Spruce 6" N 74° W 16.8' (Now a spruce stump
Scribed "1/16 S 15° BT" N 60° 2' W 16.8')Found a Scribed Tam. post at corner MKD "1/16 S 15°"
on North & "1/16 S 22°" on south. 5-3-61 RLSSet a 2" inside dia. 5' long gal. wrought iron
pipe Filled w/ concrete & capped w/ a 3" dia.
bronze tablet stamped: T198N R25W

W 1/16 S 15°

S 22°
1961
RLS NO 3628

Post, Cedar 4" x 4" x 6.5' West 2.3'

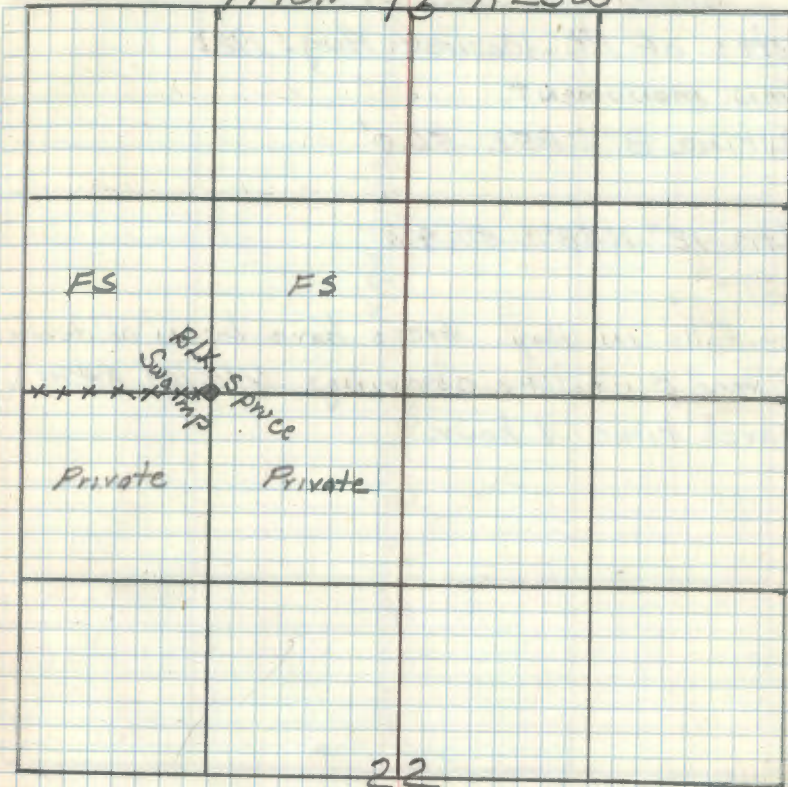
Post Cedar " " East 1.9'

Posts are penta-treated w/ red top

9/19/61 P.H. McDonald

Affidavit made
RMS R9-5680-11 JTB

T198N 15 R25W

12-12-61
O.H.

P.A. Walker

59

Q-13

South $\frac{1}{16}$ Sec 21-22

Notes of P.C. Warner Aug. 1921

Iron monument

W. Pine 8" S85E 56.4'

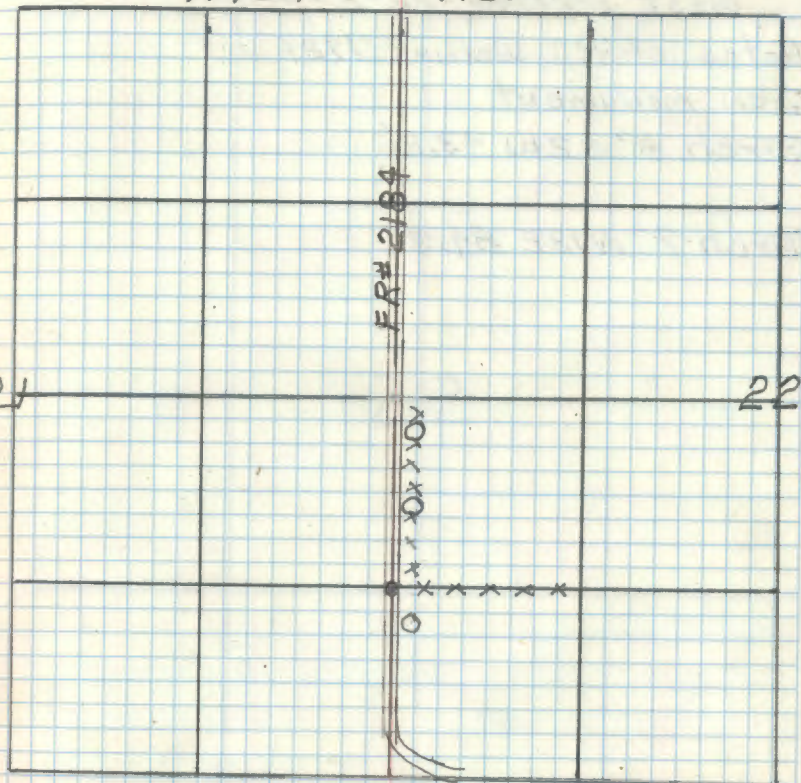
ELM 12" N58W 50.4'

Cor. falls in Hwy. trees have been obliterated
 by road & utility clearings 7/16/61 RHM
 search time 1 hour.

R9-5680-11 JH

T148N

R25W



West 1/16 Sec. 22-27

Notes of R.G. Warner 1921

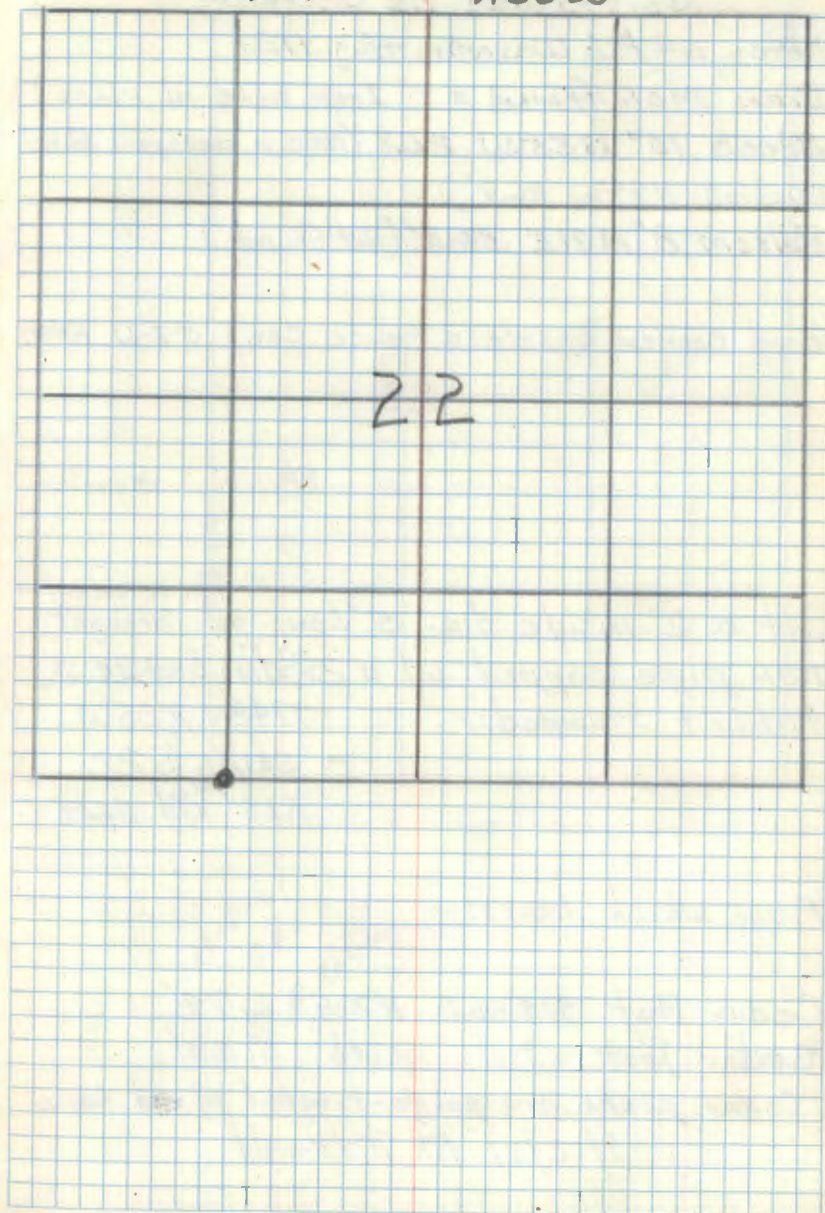
Iron monument

Birch 8" S 2W 43.2'

Birch 7" N 13E 84.3'

T148N

R25W



61

Q-14

South West $\frac{1}{16}$ Sec. 22

Notes of F.C. Warner Aug. 1921

Iron MON. (Found a 1" Iron pipe in place)

Birch 10" N55W 26.8' (Now a decayed Birch
windfall N44W 26.8')

Balsam 8" N31E 56.8' (Not Found)

Found Corner beside a Fence Cor.) 5-3-61 RHM

Set a 2" inside dia. 5' Long gal. wrought
iron pipe capped w/ a 3" dia. bronze
tablet stamped:-

T148N R25W

SW $\frac{1}{16}$ S22RLS ¹⁹⁶¹ NO 3628

From which bears:-

Cedar Post 4x4"x6.5 N70E 2.79'

Cedar Post " South 5.20'

Cedar posts are penta-treated w/ red tops

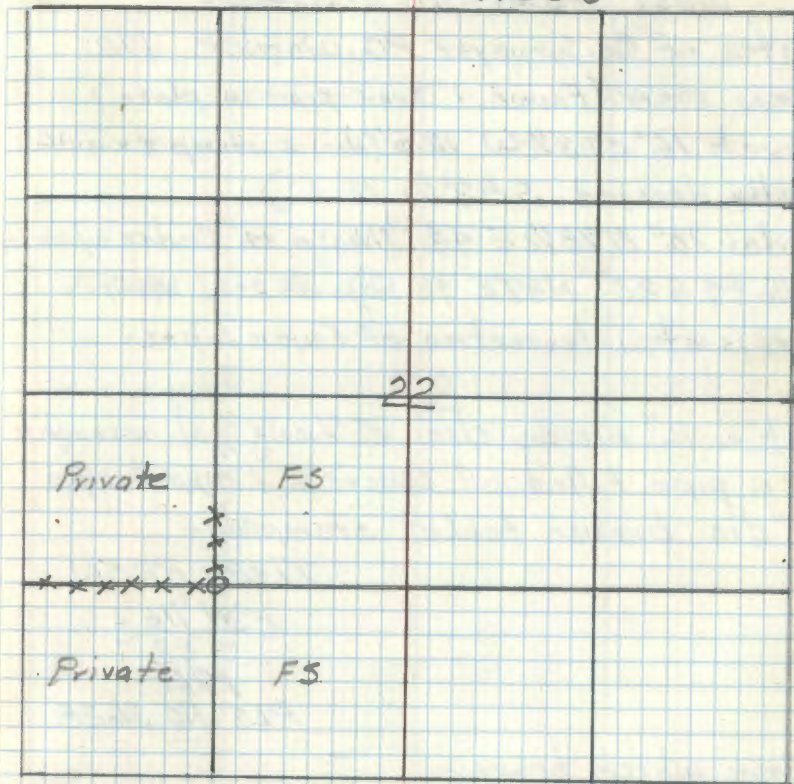
9/12/61 R.A. McDonald

AFF. made 9/13/61 RHM

R9-5680-11 246

T148N

R25W

12-8-61
D.E.

R.A. McDonald

62

p. 14

West Center 1/16 Sec. 22

Notes of Co. Surveyor P.G. WARNER 1921

Iron man. (Found 1" Iron pipe in place)

Birch 16" S 23 1/2° W 12.6' (Now a stump & windfall mostly decayed S 83° W 12.6')

Cedar 10" N 78 1/2° E 43.1' (Now a 14" Cedar w/scarce

"116 #4 S 22° N 87° E 43.1') 5-3-61 RHM

Cor. is at intersection of fence lines.

Set a 2" inside dia. 5' Long gal. wrought iron pipe filled w/ concrete & capped w/ a 3" dia. bronze tablet stamped:-

T198N R25W

 C W 1/16 C
 S 22
 1961

PLS NO 3628

From which bears:-

Maple 7" S 50° W 18.3' MKD WC 1/16 BT

Maple 7" S 64° E 26.2' " CW 1/16 BT

9/15/61 RHM McDonald

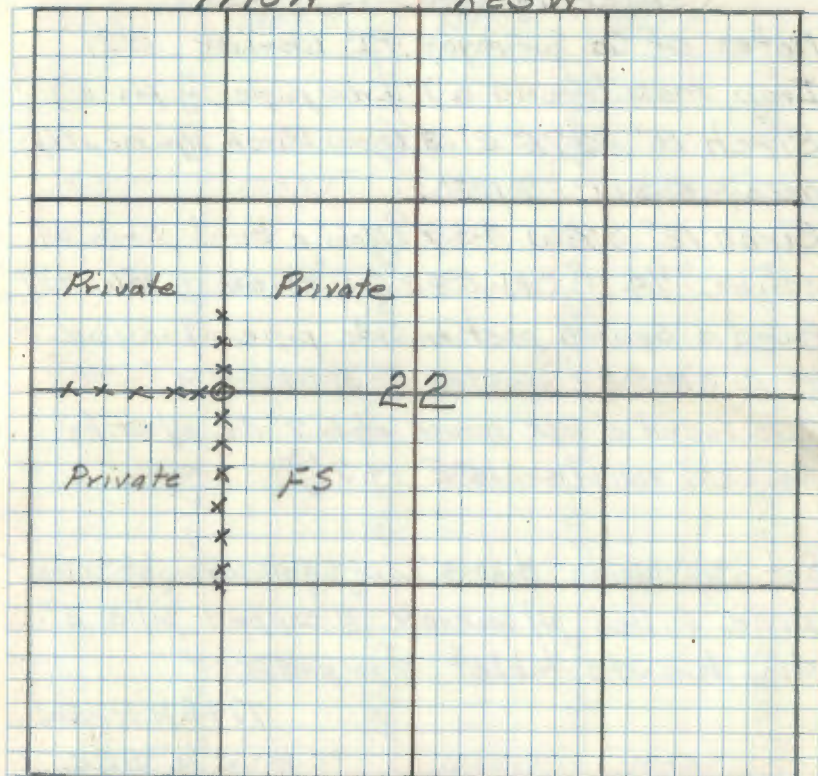
Affidavit made

RHM

P 9-5680-1134

T198N

R25W



Placed F.S. metal location post on a 7" Balsam from which Cor. bears N 61° W 4.0'

 12-8-61
 OK
 R.A. Under

Center 1/4 Sec 22

Notes of Co. Surveyor P.C. Warner 1921

Iron man. (Found a 1" Iron pipe in place)

Birch 8" S27E 21.3' (Now Birch stp. mostly decayed S17°E 21.3')

Birch 12" S18W 43.7' (Now a birch stub w/ scribe "1/4 C CN S22 BT" visible S30°W 43.7')

Found a squared post beside pipe w/ scribe "1/4 C EN S22" visible 5-3-61 RHM

Also found a BK spruce stub 7" dia. w/ scribe "1/4 S22" visible N4°E 14.7')

Set a 2" inside dia. 5' long gal. wrought iron pipe filled w/ concrete & capped w/ a 3" dia. bronze tablet stamped:-

T148N R25W

C 1/4 S22

1961

RLS NO. 3628

Tamarack 8" N2°W 37.9' mko C 1/4 S22 BT

White pine 9" S24°E 19.4' " " " "

White pine 11" S34 1/2 W 33.35' " " " "

9/12/61 R.H. McDonald

R9-5680-11 JH

Accidents made 9/13/61
RHM

T148N		R25W	
1308.2	1308.2	1317.9	1317.9
1314.7'	1306.1'	1292.5'	1299.0'
1303.1'	1303.1'	1280.7'	1280.7'
1314.7'	1306.1'	Private	Private
1298.0'	1298.0'	1243.6'	1243.6'
1313.5'	1306.9'	F.S.	Private
1305.3'	1305.3'	1246.8'	1246.8'
1313.5'	1306.9'	F.S.	Private
1312.7'	1312.7'	1250.1'	1250.1'

Placed F.S. metal location poster on a 10" Maple from which corner bears N15°E 11.7'

12-8-61
D.K.
R.H. Walker

South Center $\frac{1}{16}$ Sec. 22

Notes of Co. Surveyor F.C. Warner 1921

Iron monument (Found 1" I.P. marking Cor.)

Spruce 8" N45E 19.1' (Now stp. mostly decay
N55E 19.1' w/ scribe "T" visible)Tam. 9" N25W 28.8' (Now a stp mostly decay
N16W 28.8')

Also found a Squared scribed post beside pipe)

Set a 2" inside dia. 5' Long gal. wrought
iron pipe. Filled w/ concrete & capped w/
a 3" dia. bronze tablet stamped:

T198N R25W

S $\frac{1}{16}$ S221961
P.L.S. NO 3628

From which bears:

Black Spruce 6" N76E 21.95' MKD SC $\frac{1}{16}$ S22 BTCedar 15" N17E 52.35' MKD SC $\frac{1}{16}$ S22 BTRed Pine 17" S34W 137.2' MKD SC $\frac{1}{16}$ S22 BT.

9/12/61 R.H. McDonald

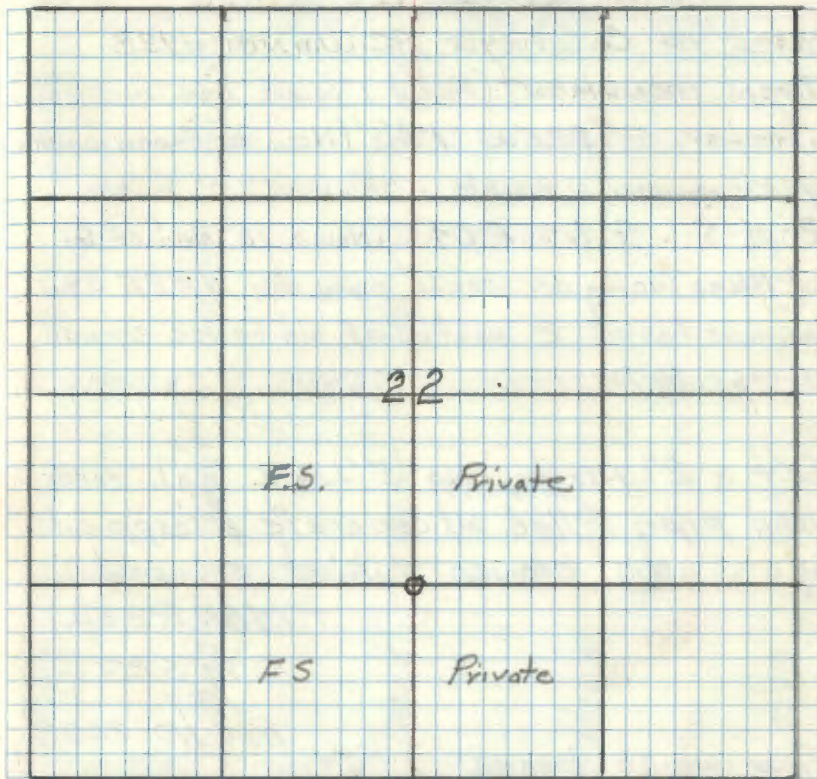
Accident made
9/13/61 RHM

R9-5680-11

T198N

R25W

JHC

Placed F.S. Metal Poster on 5"
Black Spruce from which corner
bears S22°W 5.3'12-8-61
R.H.
Q.C. Walker

Center 1/4 Sec 23

Notes of Co. Surveyor P.C. Warner 1928
 Iron monument (Found 1" square iron in place)
 Poplar 5" S25W 17.0' (Now a Aspen windfall
 w/ scribe marks visible S92°W 12.0')
 B-of-Gil. 4° N95E 34.2' (Now a 12" Balsam of G.
 w/ Blaze facing cor. scribe grown over N52E 34.2')
 Cor. was found 2' north of old fence corner.
 5-1-61 RHM

Set a 2" inside dia 5' long gal. wrought
 iron pipe filled w/ concrete & capped
 w/ a 3" dia. bronze tablet stamped

T148N R25W
 C 1/4 S23
 1961
 RL5 NO 3628

From which bears:

- Ash 5" N23E 37.0' MKD C 1/4 S23 BT
 - Birch 9" N74W 13.9' " " " "
 - Cedar post 1"x4" x6.5' penta-treated
 w/ red top East 2.75'
- 6/27/61 R.H. McDonald

	T148N		R25W	
1168.1'	1168.1'	1384.8'	1384.8'	
1300.6	1340.7'	1380.4'	1352.5'	1324.6
1221.9'	1221.9'	1360.7'	1360.7'	
1300.6	1390.7'	Private	FS	1324.6
1225.8'	1225.8'	1336.7'	1336.7'	
1308.4	1315.8'	FS	Private	1317.3
1289.6'	1289.6'	1319.9'	1319.9'	
1308.4	1315.8'	1323.5'	1320.4'	1317.3
1303.9'	1303.9'	1303.1'	1303.1'	

Placed FS metal location poster on a 4"
 Balsam from which Cor. bears N75°W 6.1'

12-8-61
 OK
 R.G. Alder

0-19

North Center $\frac{1}{16}$ Sec. 23

Notes of Co. Surveyor P.C. Warner in 1928

Iron monument (found in place at old fence cor. ^{1" Iron pipe})Cedar 10" N10E 33.6' (Now 4" Cedar w/ scribe
"1/16 #2 BT" visible N15°E 33.6')Birch 4" N30W 42.3' (Now in cleared pasture
NO trace found) 5-1-61 RHMSet a 6" dia. 5' long cylindrical concrete
monument capped w/ a 3" dia. bronze
tablet stamped:-

T148N R25W

N $\frac{1}{16}$ S23C
1961
RLS No 3628

From which bears:

Ash 6" S66°W 28.15' mkd "BT"

Rock 8.0' x 5.0' & 2' above ground mkd "X" on
South-Top N6°E 22.75'

6/13/61 R.H. McDonald

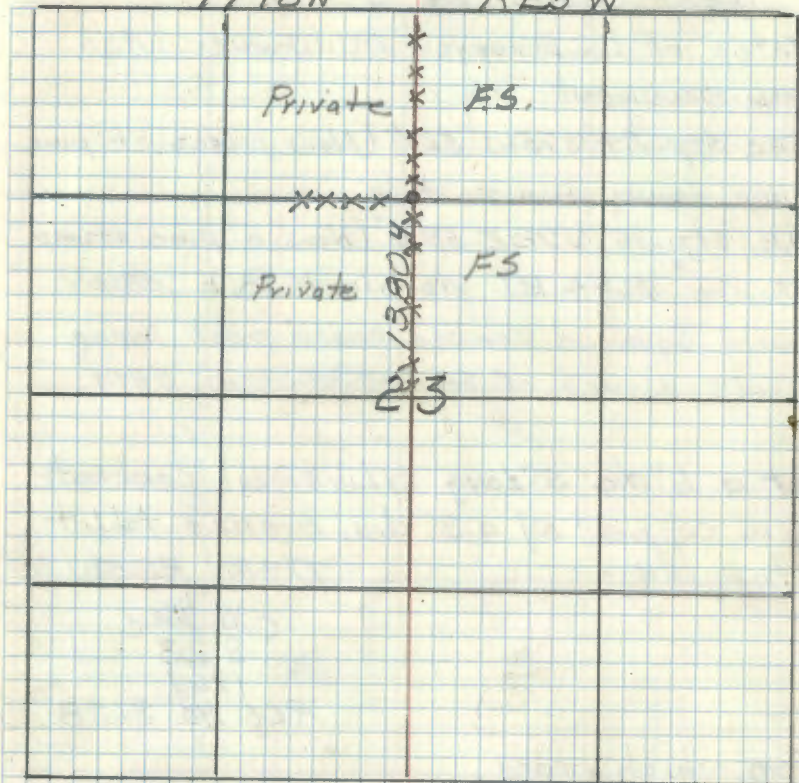
Affidavit made

R9-5680-11 24E

9/13/61 RHM

T148N

R25W

Placed FS Metal Location post on a 7"
Birch from which Con bears S61°W12-12-61
OK
R.H. McDonald

See T148N R25W BK 4 pg 21

West Center 1/16 Sec 23

Notes of Co. Surveyor P.C. Warner 1928

Iron monument

Pine stp. 24" S75W 52.5' (Now pieces of pine stump laying in a pasture)

Pine stp. 36" N72E 58.0' (Now a pine stump

w/ scribe "1/16 #4 BT" visible N72E 58.0'

Found squared scribed cedar post laying beside corner of fence 5-2-61 RHM

Set a 6" dia. 5' Long cylindrical concrete mon. capped w/ a 3" dia. bronze tablet stamped:-

T148N R25W

C W 1/16 S

S 23

1961

RLS NO. 362B

From which bears

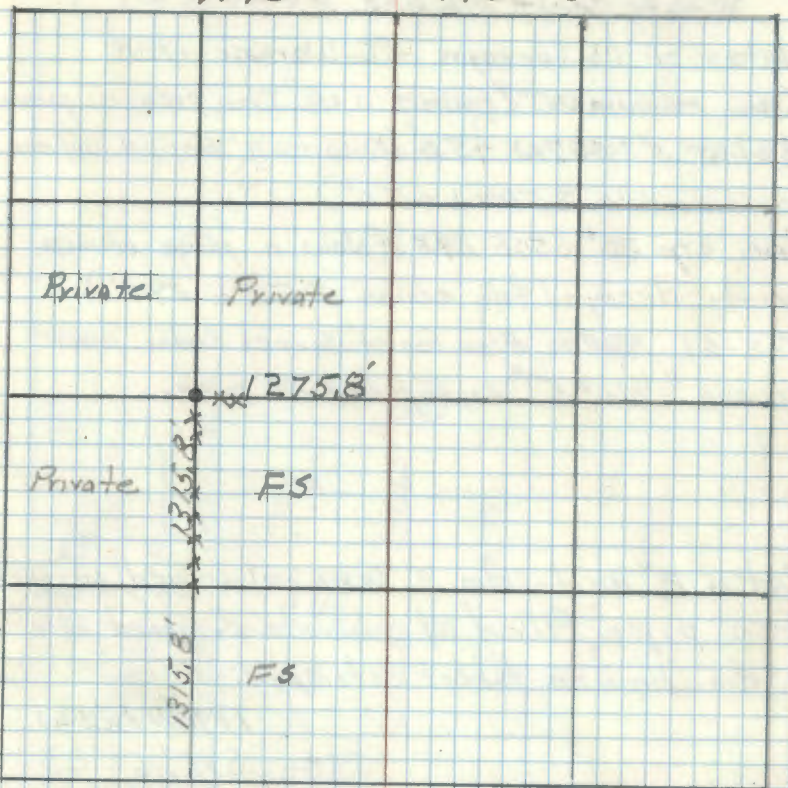
Elm 6" S13W° 60.7 MKD "BT"

Ash 7" N7E 82.4 MKD "BT"

6/13/61 P.H. McDonald

T148N

R25W



Placed FS. Metal location marker on fence corner post

12-8-61
OK

P.O. Wilson

See T148N R25W BL 4 pg 22

68

Q-10

South West $\frac{1}{16}$ Sec. 23

Notes of Co. Surveyor P.C. Warner 1928

Iron monument (Found a $1\frac{1}{4}$ " Iron pipe in place)Replac 5" S37W 45.0' (Now a 4" Aspen w/ scribe
marks visible S58W 45.0')Pine stp. 30" S50E 29.8' (Now a pine stump
partly decayed no scribe S52E 29.8')5-2-61 RHM Also found squared cedar post
scribed " $\frac{1}{16}$ " 5" Laying beside pipe.Set a 2" inside dia. 5' long galvanized wrought
iron pipe filled w/ concrete & capped w/ a
3" dia. bronze tablet stamped:-

T148N R25W

SW $\frac{1}{16}$ S23

1961

RLS NO 3628

From which bears:-

Aspen 10" S74E 45.9' MKD SW $\frac{1}{16}$ S23 BTBirch 5" N44E 47.35' MKD SW $\frac{1}{16}$ S23 BT

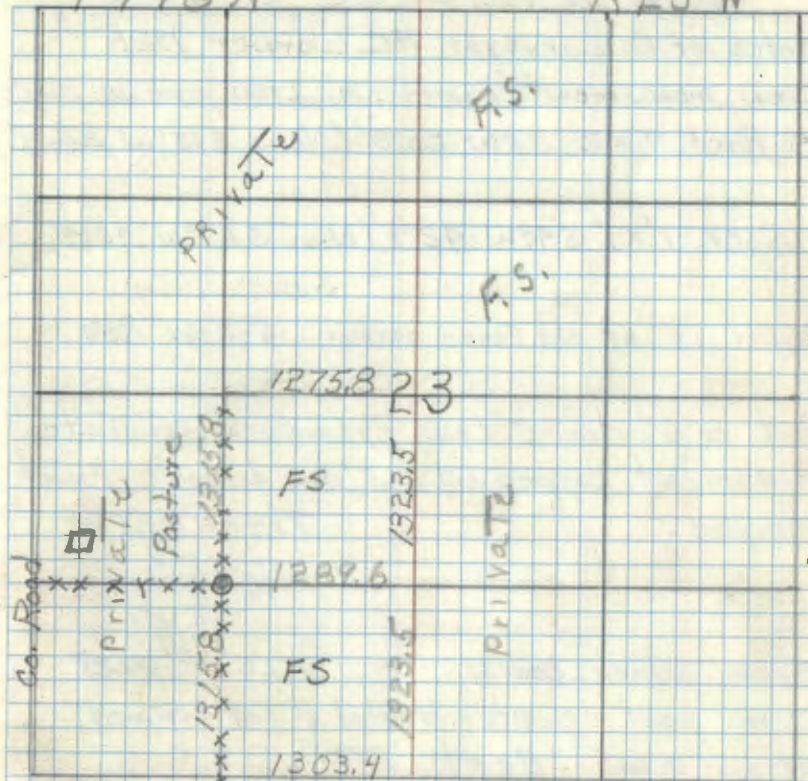
9/19/61 R.H. McDonald

Affidavit made
9/22/61 RHM

R9-5680-11 146

T148N

R25W

Placed F.S. Metal Location poster on Fence
Corner post

12-8-61

10 K

P.C. Warner

See this BK Pg 80

69

A-18

West 1/16 Sec. 23-26

Notes of Co. Surveyor F.C. Warner 1928

Iron monument (Found 1 1/4" Iron pipe in place)

x Rock 1' x 2' S55W 20.3' (Now S15°W 20.3')

+ Rock 1' x 1' S49W 42.4' (Now S67°W 42.4')

Corner is at old fence corner 5-2-61 RHM

Set a 6" dia. 5' Long cylindrical concrete monument capped w/ a 3" dia. bronze tablet stamped:

T148NR25W

W 1/16 S23

S26

RLS No 3628

From which bears:

Cedar post - penta-treated & red topped
4" x 4" x 6.5' East 2.7'

Rock 1' x 2' Flush w/ ground MKD x on top center S15W 18.9

6/14/61 R.A. McDonald

Acedavit made
KRM

139-5680-11 84

T 148 N

R 25 W

FENCE LINE		1303.4	
Private	Private		
		26	

Placed F.S. Poster on Cedar Bearing post
Cor. is 2.7' west

12-6-61
A.K.
R.A.V.

See BK 4 Pg 29

Q-19

South Center 1/16 Sec. 23

Notes of Co Surveyor P.G. Warner 1928

Iron monument (Found a 1/4" Iron pipe in place

Birch 6" N15E 29.3' (not found) (Found a piece
of down Birch w/ scribe "BT" visible N25°E 29.3')

Birch 10" S12W 18.6' (Now a decayed wind fall

S 21° W 18.6') 5-1-61 RHM (Found several

Scribe marks on the pieces of wood 9/18/61)

Set a 2" inside dia. 5' long galvanized wrought
iron pipe filled w/ concrete & capped w/ a
3" dia. bronze tablet stamped:-

T148N R25W

S 1/2 S 23

1961

RLS NO 3628

From which bears

Cedar 7" N26 1/2 W 18.2' mark CS 1/16 S23 BT

Cedar 8" S36°E 36.75' " " " "

9/18/61 R.H. McDonald

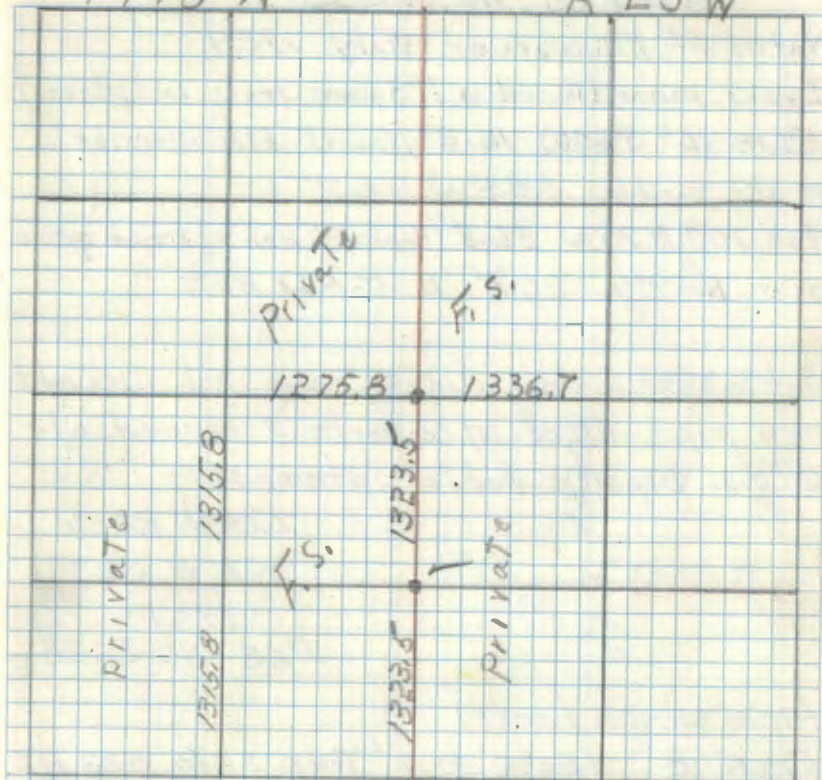
R9-5680-11246

Affidavit

made
9/22/61 RHM

T148 N

R 25 W

Placed a F.S. Metal location poster ON a
7" Cedar From which Cor. bears $S28^{\circ}E$ 175'S26 1/2° E
29.4'

12-8-61

OK

R. G. Warner

71

Q-20

South East 1/16 Sec. 23

Notes of P.C. Warner July 1928

Iron mon. (Found a 1" square iron in place)

Elm 10" S30W 16.2' (Now 15" Elm w/ scribe
marks visible S34W 16.2')Ash 10" N75W 26.8' (Now 12" Ash w/ scribe grows
over N69W 26.8') 5-1-61 RHMSet a 2" inside dia. 5' Long gal. wrought
iron pipe filled w/ concrete & capped w/ a
3" dia. bronze tablet stamped:-

T148N R25W

SE 1/4 S23

1961

RLS NO 3628

From which bears:

Oak 8" N86°E 23.9' MKD SE 1/4 S23 B7

Ash 19" N87°W 38.23 " " "

Cedar 8" S46°W 46.45 " " "

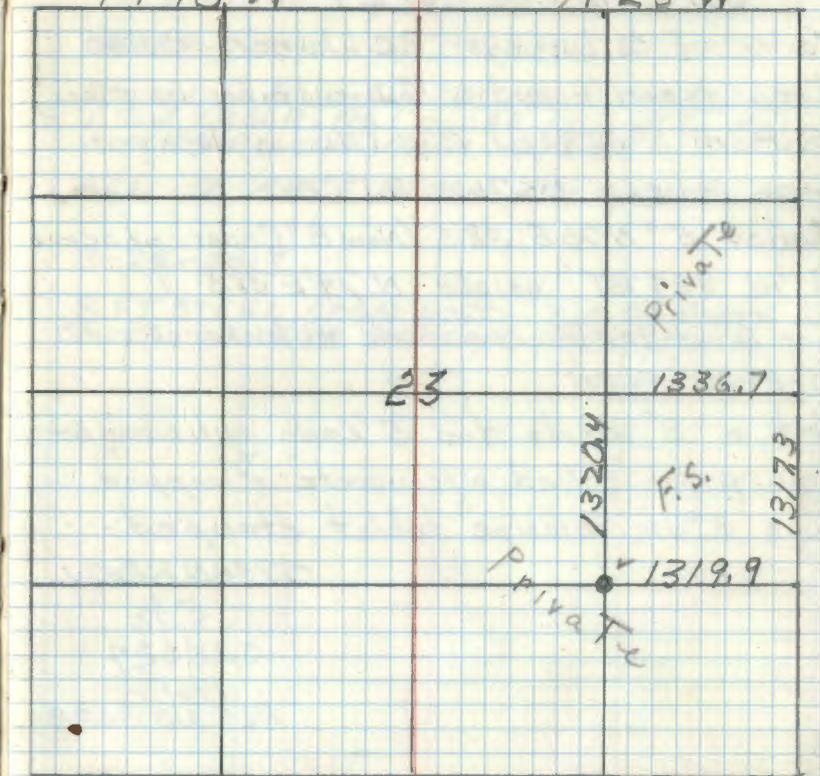
7/2/61 R.H. McDonald

Affidavit made 7/14/61 RHM

R9-5680-11 SW

T148 N

R 25 W

Placed F.S. Metal location poster on a 7"
Maple From which Cor. bears S39°W 13.0'12-7-61
OK

R.H. McDonald

72

Q-21

South 1/16 Sec 23-24

Notes of Co. Surveyor P.G. Warner 1928

Iron man. (Found a 1" Iron pipe in place)

Balsam 6" N 46W 27.1 (Now a decayed

Balsam Stp. & Log N 47W 27.1'

Cedar 5" N 70E 38.5' (Now 8" Cedar w/ scribe
"S 1/16 S 24 BT" visible N 74°E 38.5')

Cor. is at the corner of old rail fence.

5-2-61 RHM

Set a 2" inside dia. 5' Long gal. wrought
iron pipe. Filled w/ concrete & capped
w/ a 3" dia. bronze tablet stamped:

T148N R25W

5 1/2

S23 S24

1961

PLS NO 3628

Cedar 9" N 27E 29.2' MKD S 1/16 S 24 BT
Elm 15" S 69E 52.4' " S 1/16 S 24 BT

7/2/61 R.H. McDonald

Affidavit made 9/19/61 RHM

R9-5680-11 JH

T148N

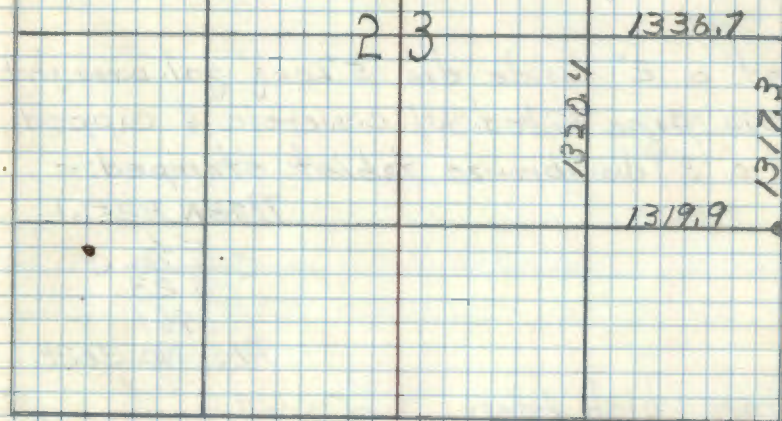
R25W

04-08-2009

FD IRON IN PLACE AND GPS. IRON IN ASH AND
A FEW CEDAR. 1961 CEDAR NOW 15" - 1961
ELM IS DOWN. MARK NEW BT

ASH 12" S 45°E 16.90 FT TO SPR MKD: S 24 BT

3-28-2013

8 FT STEEL SIGN POSTS 3.0 FT NORTH AND
SOUTH. LINE TO STANDARD NORTH & SOUTHPlaced P.S. Metal Location poster on a
4" Elm from which cor. bears S 31°E 3.8'12-7-61
P.G. Warner

East Center 1/16 Sec 23

Notes of Co. Surveyor P.C. Warner July 1928

Iron mon. (Found a 1" square iron in place)

Birch 12" S25W 17.5' (Now a Birch wind fall
w/ scribe "1/16# 8 BT" visible S27°W 17.5')Birch 12" N50W 41.7' (Now a Birch stump w/ scribe
"BT" visible N 47°W 41.7')

5-1-61 RHM

Set a 2" inside dia 5' long gal. wrought
iron pipe filled w/ concrete & capped
w/ a 3" dia. bronze tablet stamped:-

T148N R25W

C E 7/16 C
S 23

1961

RLS. NO. 3628

From which bears 56.7' Q.U.V.

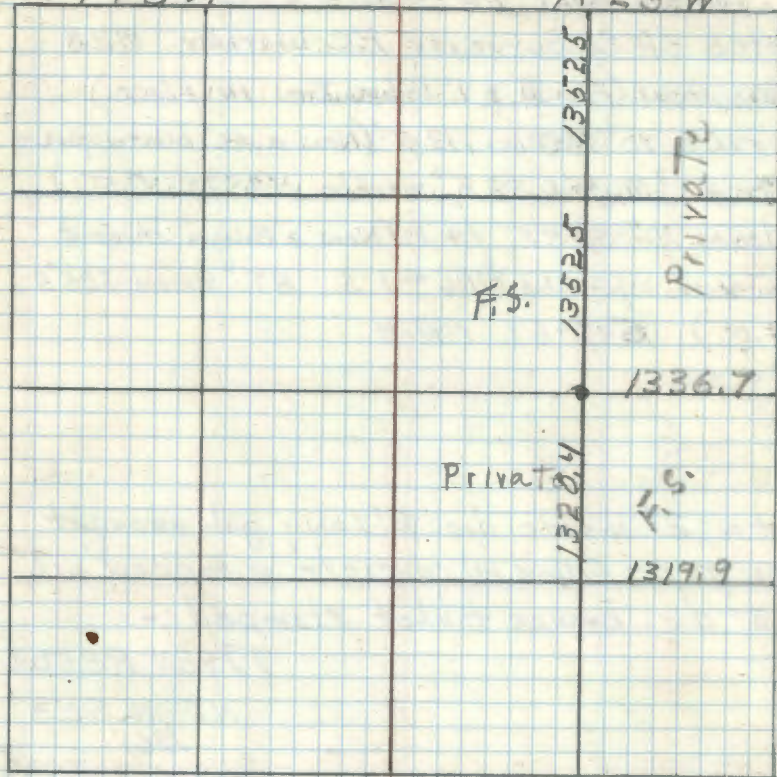
Cedar 9" N59W 56.6' MKD. EC 7/16 S23 BT

Birch 12" S62W 32.5' " " " "

7/2/61 RHM

T148N

R25W

Placed F.S. metal location poster on a 5"
Aspen From which Cor bears S44°E 3.0'R-7-61
O. H.
B. A. Warner

Sec T148N R25W bk 4 pg 18

79

0-20

North East 1/16 Sec. 23

Notes of Co. Surveyor P.C. Warner 1928

Iron man. (Found a 1" Square Iron in place)

W. Pine 10" N. 50W 19.5' (New a 13" white pine
w/scribe "1/16 # 1 S 23" visible N 75°W 19.5')Balsam 10" S 25 E 19.0' (New a Balsam stump &
blowdown w/scribe "1/16 # 1 S BT" visible S 25 E
19.0') 5-1-61 RHMSet a 2" inside dia. 5' Long gal. wrought
iron pipe filled w/ concrete & capped w/
a 3" dia. bronze tablet stamped:-

T148N R25W

NE 1/16 S 23

1961

RLS NO 3628

New B.T.'s

W. Pine 17" N 53W 14.95' MKD NE 1/16 S 23 BT

Maple 10" S 19°E 37.6 MKD NE 1/16 S 23 BT

Post Cedar, 7" x 7" x 6.5' pentq-treated w/ red

Top. North 3.4'

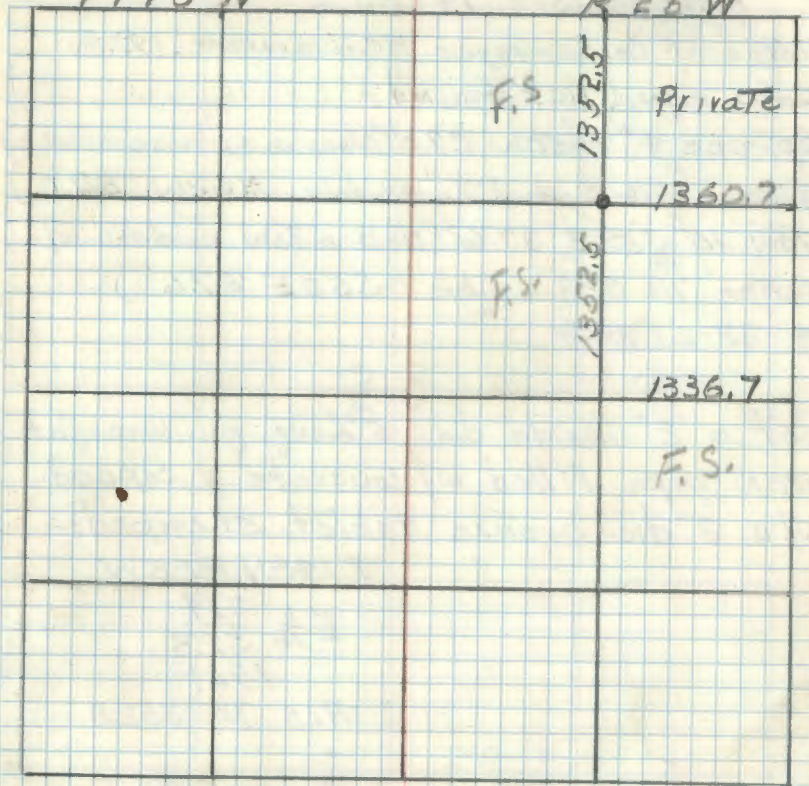
6/27/61 R.H. McDonald

Affidavit made 9/19/61 RHM

R9-5680-11 SW

T148 N

R 25 W

Placed F.S. metal poster on a 16" W. Pine from
which cor. bears S 53°E 13.9'

12-12-61

R.H. McDonald

See T148N R25W bk 9 pg 17

75

W-20

East 1/16 Sec: 19-23

Notes of Co. Surveyor P.C. Warner 1928

Iron mon. (Not Found)

Spruce 4" N50W 27.0' (Now a spruce wind fall w/ scribe "1/16 S1/4 BT" visible N62W 27.0')

Tam. 10" S55E 37.6' (Now a Tam wind fall w/ scribe "1/16 S23" visible S53E 37.6')

4-28-61 P.C.W.

Set a 2" inside dia. 5' long gal. wrought iron pipe filled w/ concrete & capped w/ a 3" dia. bronze tablet stamped:-

T148N R25W

E 1/16 S1/4

S23

1961

RLS NO 3628

Tam 8" S72E 20.65' MKD E 1/16 S23 BT

Cedar post 4" x 4" x 6.5' penta-treated w/ red top West 25'

6/27/61 P.C. McDonald

Posted P.C.

9/14/61 P.C.W.

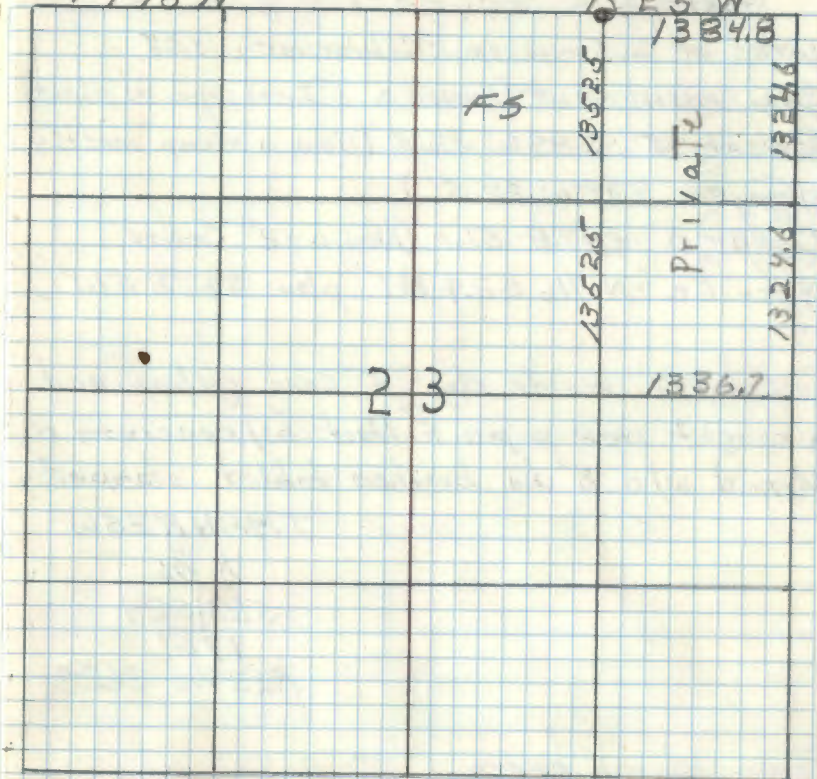
R9-5680-11 sec

FS

FS

T148N

R25W



Poster is on red top cedar post 2.5' West of Corner.

4-12-61
OK
P.C. McDonald

See T148N R25W bk 4 pg 16

76.

O-21

North $\frac{1}{16}$ Sec. 23-24

Notes of Co. Surveyor P.G. Warner 1928

Iron monument (Found a 1" Iron pipe in place)

Balsam 5" S 89° W 32.5' (Now a stump mostly decayed S 89° W 32.5')

Cedar 8" S 47° E 51.1' (Now a 12" Cedar w/ scribe "N $\frac{1}{16}$ S 24 BT" plain S 43° E 51.1')

Set a 2" inside dia. 5' Long galvanized wrought iron pipe filled w/ concrete & capped w/ a 3" dia. bronze tablet stamped:-

T148NR25W

N $\frac{1}{16}$

S 23 | S 24

1961

R.L.S. NO 3628

From which bears

Cedar 11" N N $\frac{1}{2}$ ° E 34.8' MKD N $\frac{1}{16}$ S 24 BTTam 10" S 80° W 101.2' MKD N $\frac{1}{16}$ S 23 BT

7/5/61 R.H. McDonald

Bearing Tree Scribe placed on

12" Cedar S 47° E 51.6'

12-12-61

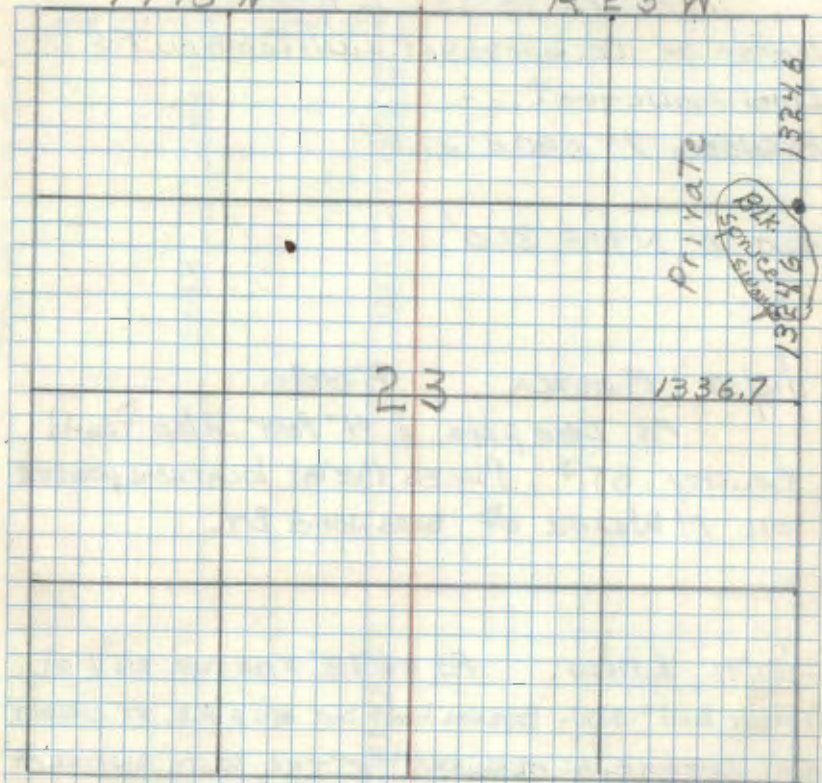
R.O. Weller

Posted
9/19/61 RHM

R9-5680-11 JWC

T148 N

R 25 W

F.S. Foster was on a 12" Balsam from which
Cora bears S 10° E 8.4'

12-12-61

OK

R.O. Weller

See T148N R25W blk 4 pg 19

Center 1/4 Sec. 24

Notes of Co. Surveyor L. W. JOHNSON Feb. 1926

Iron monument

B. Wood 7" S80E 39.8'

Ash 10" N41E 31.0'

7/12/37 MURBECK 874-9

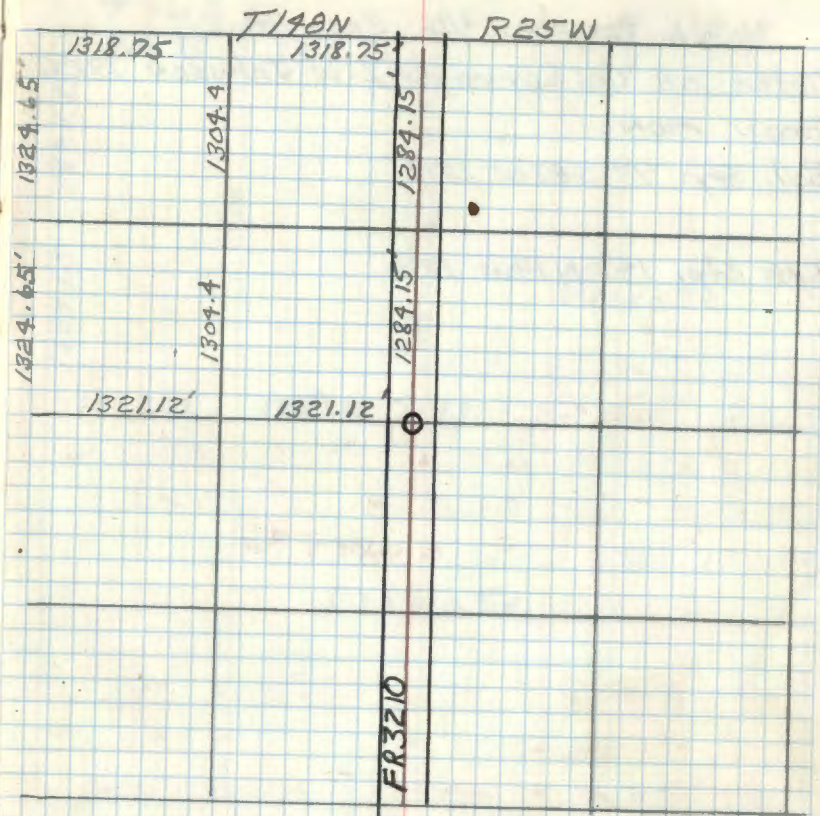
Fd IRON PIPE & 4" POST ALSO FOUND
COUNTY BT'S. PLACED METAL LOCATION POSTER
ON N W SIDE OF BASSWOOD BT.

5/31/91 R. MAHN. Fd A 1" x 1/8" IRON PIPE IN E OF
FOREST ROAD # 3210. PIPE WAS BENT BUT IN PLACE AT CORRECT
PLAT DISTANCE, AS MEASURED FROM THE SOUTH QUARTER OF
SECTION 24. I PULLED PIPE TO STRAIGHTEN AND REPLACE.
NOTIFIED HOWARD ZEMAN, MARCELL RD. OF POSSIBLE TRESPASS WEST.

REA POLE N 28 E 47.13 TO SPK

REA POLE N 40 W 35.15 TO SPK

IRON PIPE IS 6" BELOW SURFACE OF GRAVEL ROAD
STEEL SIGN POST 32.50 FT WEST
GPS IRON 4-08-2009



78

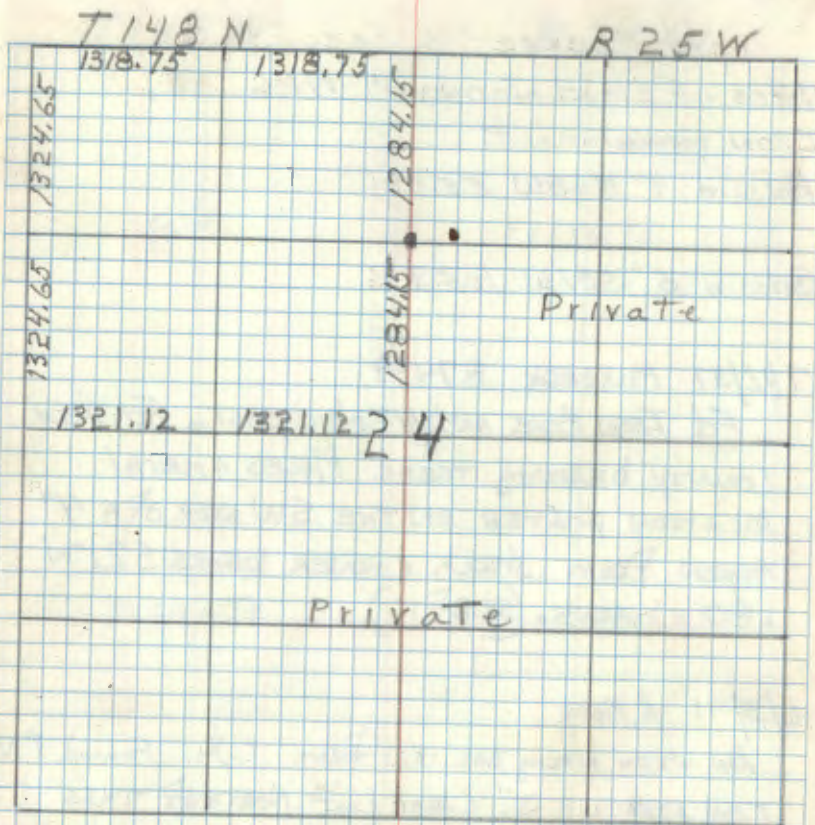
North Center 1/16 Sec. 24

Notes of Co. Surveyor L. W. Johnson 1926

Iron mon.

Bal. Sta. 9" S83W 12.7'

Spr. Sta. 14" N19W 12.6'



79 P-22

West Center 1/16 Sec. 24

Notes of Lloyd Johnson 1926

Iron monument

Balsam 9" N68W 55.0'

Balsam 5" S21W 105.8'

7/12/37 MURBECK 874-9

Fd IRON PIPE AND 4" WOOD POST. Fd BOTH COUNTY BEARING TREES. PLACED A METAL LOCATION POSTER ON THE SW SIDE OF A 4" ASPEN FROM WHICH CORNER BEARS S21°W .80 CHAINS. (52.8 FT)

6/3/91 R. MAZIN

RAN WITH STRONG BOZ 1321 FROM C.X.1. FOUND 1" X 1/8" IRON PIPE UP 3" CLEAR CUT NORTH OF THIS LOCATION COULD NOT FIND COUNTY BTS OR F.S. LOCATION POSTER AT THIS TIME.

9/17/91 R. MAZIN

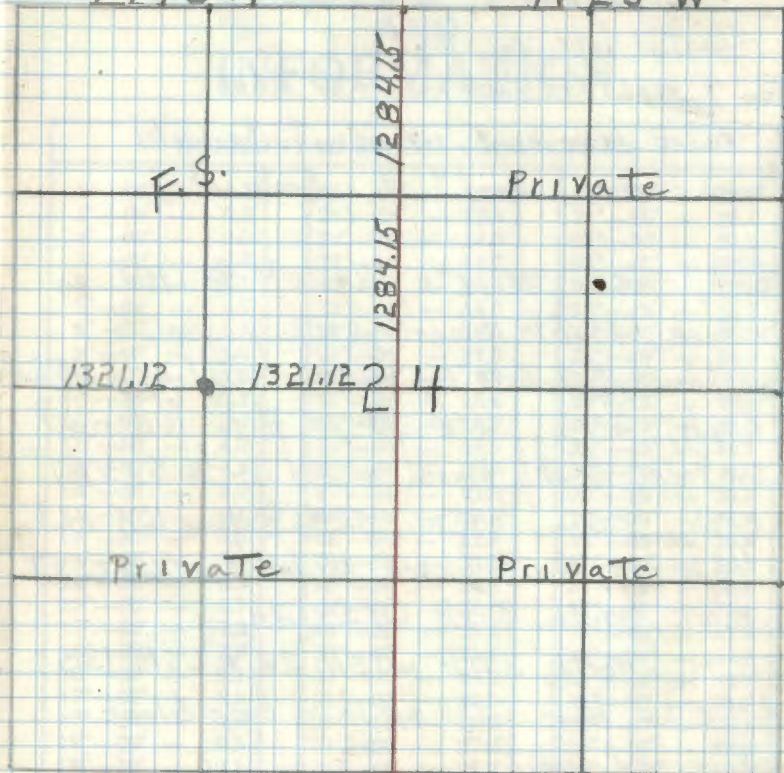
WITNESSED BY

Maple 6" N64°E 48.15' TO Spk MKD "CEX 6 S24 BT"

Maple 6" S83°E 54.15' TO Spk MKD "CEX 6 S24 BT"

T148 N

R 25 W



9/17/91 CONT

STEEL SIGN POSTS ~~3.60~~ 3.60 FT EAST & 3.85 FT WEST. TRAVERSED TO THIS MONUMENT TO DETERMINE IF POSITION WAS CORRECT. A 3/4" X 3.3 FT PIPE SETS ALONG SIDE JOHNSONS MONUMENT AND WAS PLACED BY THE LAND OWNER. 4-08-2009 R. MAZIN GPS ED IRON. 1991 BTS ARE OK

Southwest 1/16 Sec 23

Cont'd from pg 68

Jan 9, 1986 G. Robertson + B. Avsk

Found monument adjacent to old
fence corner, up 1.9 ft. From whichW. Birch, 7.8 in, N45°E, 47.20 ft to 16d in
NW face, double blazed, scribing visible

Aspen (dead), 11.7, S74°E, 45.90 ft to 16d nail in S face

W. Birch, 8.0 in, S52°E, 34.10 ft to 16d nail
in SW face, double blazed, scribed "SW 1/16 S23 BT"W. Birch, 7.5 in, S09°W, 52.36 ft to a 16d nail
in the W face, double blazed, scribed "SW 1/16 S23 BT"

C.B.M., south, 3.0 ft w/54-2a

C.B.M., north, 3.0 ft w/54-2a & LSM-130

All BT's have 60d spike in base blaze
and painted redIMPROVED TABLES
AND
INFORMATION

HORIZONTAL STADIA CORRECTIONS

2°-00'	— 0.1	21°-00'	— 12.8	33°-00'	— 29.7
3°-00'	— 0.3	21°-30'	— 13.4	33°-15'	— 30.1
4°-00'	— 0.5	22°-00'	— 14.0	33°-30'	— 30.5
5°-00'	— 0.8	22°-30'	— 14.7	33°-45'	— 30.9
6°-00'	— 1.1	23°-00'	— 15.3	34°-00'	— 31.3
7°-00'	— 1.5	23°-30'	— 15.9	34°-15'	— 31.7
8°-00'	— 1.9	24°-00'	— 16.5	34°-30'	— 32.1
9°-00'	— 2.5	24°-30'	— 17.2	34°-45'	— 32.5
10°-00'	— 3.0	25°-00'	— 17.9	35°-00'	— 32.9
10°-30'	— 3.3	25°-30'	— 18.6	35°-15'	— 33.3
11°-00'	— 3.6	26°-00'	— 19.2	35°-30'	— 33.7
11°-30'	— 4.0	26°-30'	— 19.9	35°-45'	— 34.1
12°-00'	— 4.3	27°-00'	— 20.6	36°-00'	— 34.6
12°-30'	— 4.7	27°-30'	— 21.3	36°-15'	— 35.0
13°-00'	— 5.1	28°-00'	— 22.0	36°-30'	— 35.4
13°-30'	— 5.5	28°-30'	— 22.8	36°-45'	— 35.8
14°-00'	— 5.9	29°-00'	— 23.5	37°-00'	— 36.2
14°-30'	— 6.3	29°-30'	— 24.3	37°-15'	— 36.6
15°-00'	— 6.7	30°-00'	— 25.0	37°-30'	— 37.1
15°-30'	— 7.2	30°-15'	— 25.4	37°-45'	— 37.5
16°-00'	— 7.6	30°-30'	— 25.8	38°-00'	— 37.9
16°-30'	— 8.1	30°-45'	— 26.2	38°-15'	— 38.3
17°-00'	— 8.5	31°-00'	— 26.5	38°-30'	— 38.7
17°-30'	— 9.0	31°-15'	— 26.9	38°-45'	— 39.1
18°-00'	— 9.5	31°-30'	— 27.3	39°-00'	— 39.6
18°-30'	— 10.1	31°-45'	— 27.7	39°-15'	— 40.0
19°-00'	— 10.6	32°-00'	— 28.1	39°-30'	— 40.5
19°-30'	— 11.2	32°-15'	— 28.5		
20°-00'	— 11.7	32°-30'	— 28.9		
20°-30'	— 12.3	32°-45'	— 29.3		

Chains to Feet

1	66
2	132
3	198
4	264
5	330
6	396
7	462
8	528
9	594
10	660

Feet to Chains

100	1.515
200	3.030
300	4.545
400	6.060
500	7.575
600	9.090
700	10.606
800	12.121
900	13.636
1,000	15.151