

CORNER  
RESTORATION  
T147N R27W



MINING  
TRANSIT BOOK  
No. 3841

CORNER  
RESTORATION  
T147N R27W







1 J-25

R9-750-4 by schooner  
11-26-79

Section corner 12, 13, 7, 18 R26-27 W

G.L.O. resurvey of 1936

Found 3 orig Govt. BTs

Norway pine 36" N60°E 114 lks (75.29') rescribe  
BT. Now pine stump at record bearing & dist.  
Jack pine stub 4' high S35°E 78 lks. (51.98')Norway pine 36" N57½°W 32 lks (21.12') rescribe  
BT. Now a 32" Red pine at record bearing  
and dist. scribe visibleSet a concrete cylinder 6" dia x 24" long w/  
brass cap stamped

T197N	
R27W	R26W
S 12	S 7
S 13	S 18
1936	

Found in place

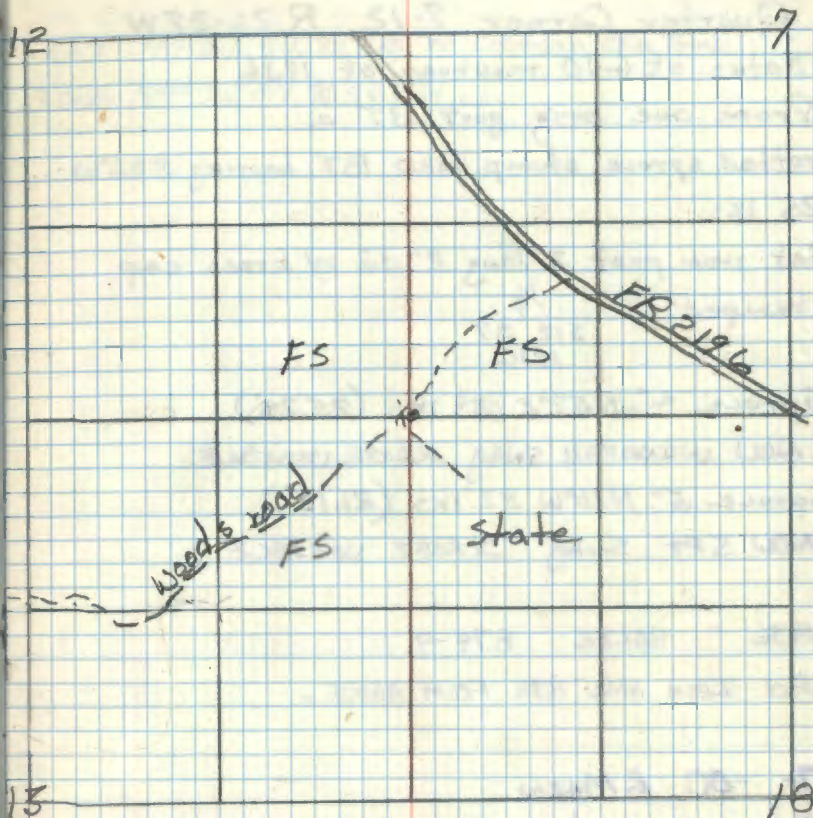
New BTs

Jack pine 10" S82½°E 27 lks (17.82') Now jack  
pine stump at record bearing & dist. scribe visibleWhite pine 14" S24°W 54 lks (35.64') (Now a  
22" white pine at record bearing & distance w/  
scribe visible.)I set a 4" x 4" x 72" red topped cedar post  
due North 0.6 ft. w/ sign 54-4 attached

11-23-64 Robert H. McDonald

I replaced sign 54-4 which had been destroyed  
by bear. 5-12-70 RHM. Placed BT signs  
on Red & White Pine BTs

Affidavit RHM

INFORMATION ON CORNER CARD  
11-26-79 JIM SCHOONOVER MARKED NEW BT

N. PINE 15" N68°E 12.10' SCRIBED ST BT

INFORMATION ON UPDATE SEE PAGE 70 THIS BOOK



Quarter Corner 7-12 R 26-27W

Notes of GLO resurvey of 1936

From one orig govt BT a

rotted spruce stump MKD BT bearing S38°W

25 1ks

Set iron post 3' long 2" dia w/ brass cap

stamped:

$\frac{1}{4}$   
S12 S7  
1936

Spruce 4" N57°E 39 1ks (25.74')

NOW WINDFALL SNAG SCRIBE VISIBLE

Spruce 5" N10°W 32 1ks (21.12')

NOW 5 FT SNAG SCRIBE VISIBLE

1936 BALKE 874-9

Fd IRON AND BTS FROM ABOVE.

7-00 R MAIN

Fd IRON IN PLACE FLUSH W/ GROUND IN BIRCH

SAPRUCR SWAMP EAST OF FR 1280 FT.

DRIVE 8 FT STEEL SIGN POST ON NORTH

SIDE OF IRON. Fd OLD TAG ON 3" SPRUCE

NO NAME DATED 11-10-55. GASED CORNER

WITNESS WITH:

B 5 SPRUCE 3" S25E 6.1 FT TONNAGE NOT MKD 1955 TAG

B 5 SPRUCE 4" N72°W 2.6 FT TONNAGE NOT MKD

LAT 47°33'50.25715"N CORRECTED REAL TIME  
LONG 94°02'07.76562"W



3 T-25

Quarter Corner sections 25-30 R26-27

Notes of G.L.O. resurvey of 1936

Iron post 3' long 2" dia. w/ brass cap

MKD

$\frac{1}{4}$   
S25 S30  
1936

Orig BT a Norway pine stub 30" N85°E 27 IKS.

w/ part of old scribe visible

New - Norway pine 10° N4°E 119 IKS. (78.54) (Now

14" Red pine at record bearing & dist.)

Norway pine 24" S75½°W 184 IKS (121.44 (Now 28"

Red pine at record bearing & dist.)

Brass cap in good condition I placed BT  
tags on the trees 5-6-66 RHM

10/27/93 R. MAIN

Fd 2" IP WITH CAP IN GOOD CONDITION UP 7"

28" R PINE TO BE REMOVED FOR INGER COMMUNITY

CENTER BUILDING. IP WITNESSED BY.

(1936) R. PINE 19" N4°E 78.54 GLO DIST SCREE  
OVERGROUND

NEW R PINE 13.5" S9°E 54.16 TO SPE MKD ¼ S30 BT

NEW R PINE 17" S42°W 51.99 FT TO SPE MKD ¼ S25 BT

8 FT STEEL SIGN POST NORTH 3.8 FT EAST 4.85

R9-7150-4  
RHM

Corner is 1 chain 12 IKS north of Inger road  
as of 1936



4

Section corner 24-25-19-30 R26-27W

Notes of GLO resurvey of 1936

set by proportionate measurement a 6" dia.

24" long cylindrical concrete monument w/ a

brass cap MKD

7147N	
R27W	R26W
S 24	S 19
S 25	S 30

1936

Tamarack 4" N63 $\frac{1}{4}$ °E 12 lks (7.9')Cedar 5" S53 $\frac{1}{4}$ °E 33 lks (21.8')

Tamarack 5" S11°W 21 lks (13.9')

Cedar 4" N75°W 1 $\frac{1}{2}$  lks (1.0')



5

Quarter Corner sections 24-19.

Notes of GLO resurvey of 1936

set a iron post 3' long 2" dia. w/ brass

cap MKD

$\frac{1}{4}$   
S24|S19  
1936

Original BTs

Fallen spruce 8" N66 $\frac{1}{4}$ °E 26 lks (record-Tam

6" N70°E 30 lks.)

Tamarack 10" N69 $\frac{1}{4}$ °W 17 lks MKD  $\frac{1}{4}$ S (record-Sproce

8" N65°W 18 lks.)

New

Cedar 6" S75 $\frac{1}{2}$ °E 31 lks. (20.5')

Cedar 6" N61 $\frac{1}{2}$ °W 18 lks. (11.9')



6 N-25 Affidavit ~~RAM~~

Section corner 13-24-18-19 R26-27W

Notes of GLO resurvey of 1936

Set a 6" dia. 24" long cylindrical con. mon.

w/ brass cap MKD:-

Found in place

T/47N	
R27W	R26W
S 13	S 18
S 24	S 19
1936	

Orig.

Fallen pine 10° N59°E <sup>(11.22)</sup> 17 kcs. (record N60°E 16 kcs.)

\* live Norway 15" S69°E 29 kcs. w/ scribe marks, rescribe

BT (record S63°E 30 kcs.) Now 20' at record <sup>bearing</sup> <sub>Dist.</sub>

Rotted pine stump N40°W 35 kcs (record N44°W.

42 kcs. Same

New

Norway pine 12" N77°E 39 kcs. (25.7') Now dead

Stub w/ scribe visible at record bearing &amp; dist.)

Cedar 5" S49°W 34 kcs. (22.9') Now dead stub w/

scribe at record bearing &amp; dist.)

Norway pine 15" N52°W 79 kcs. (52.1') Now 18" Red

pine w/ scribe visible at record bearing &amp; dist.)

Cedar 6" S34½°W 18.6' MKD S24 BT

I placed BT shields on all the BTs

5/26/70 Robert H. McDonald

\* placed FS 54-9 on this BT

RR-5680-11 RAM

N 67°35' E



7 L-25

Affidavit RHW

Quarter corner sect's. 13-18 R26-27W

Notes of G.L.O. resurvey of 1936

set a iron post 3' long, 2" dia w/ brass cap  
mkd.

Found in place  $\frac{1}{4}$  S13 | S18  
1936

orig.

Fallen tam. stub 5" N75°E 9 lks (record S87°W  
11 links) Now decayed tam. wood - same

New

Tamarack 10" S31½°E 26 lks. (17.2') (Now a 10" Tam.  
w/ scribe overgrown S31½°E 17.2')

Tamarack 6" N21¼°W 50 lks. (33.0') (Now a partly  
decayed stump w/ scribe visible N21¼°W 33.0')

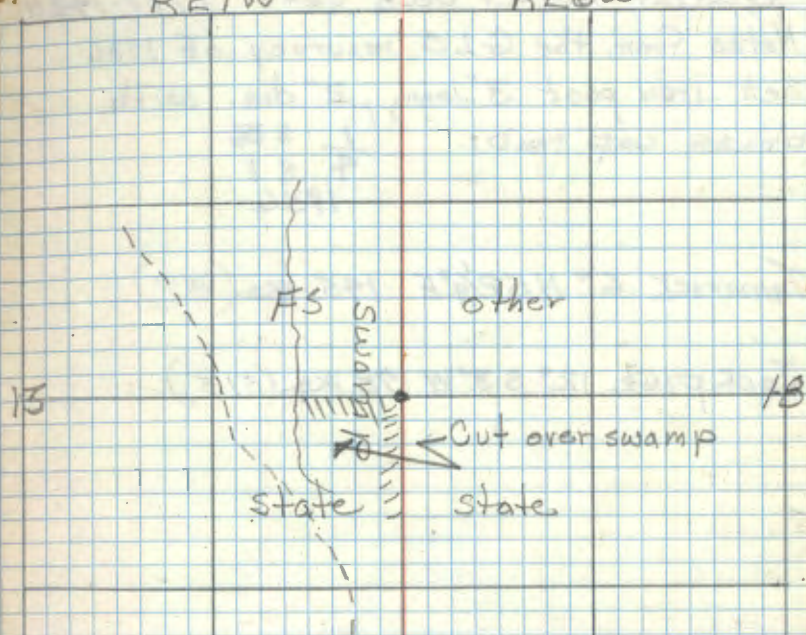
Cedar 7" N11°W 17.3' mkd ¼ S13 BT

I placed FS sign 54-9 on the Tamarack  
BT (S31½°E) placed BT shields on BTs  
5/26/70 RHW Donald

T147N

R27W

R26W



Blazed line runs east from old woods  
road thru swamp to corner.



Quarter Corner Secs 36-1 T117-148N

Notes from the GLO resurvey of 1936

Set iron post 3' long, 2" dia. with

brass cap MKD:-

$\frac{1}{4}$  S 36  
S 1  
1936

Tamarack 6" N 52 $\frac{1}{4}$ ° E 195 lks. (95.7')

Jack pine 12" S 3° W 78 lks. (51.5')



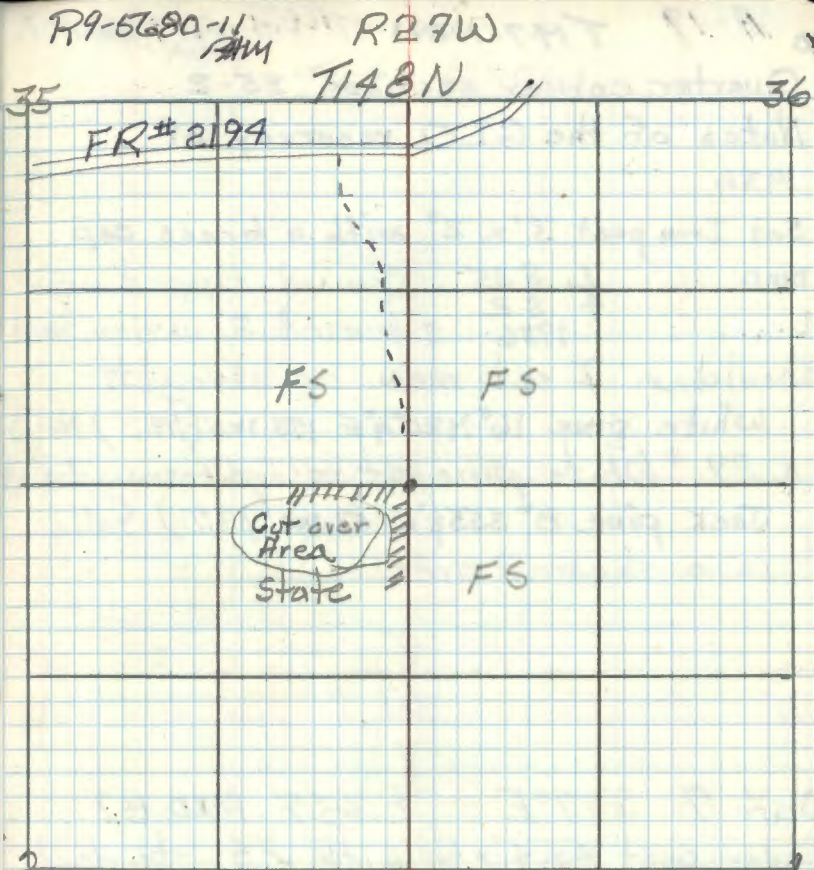
9 A-21 Affidavit made RHM.  
Corner Sections 1-2-35-36 T147-148  
Notes of the GLO resurvey of 1936

Set a 6" dia, 24" long cylindrical  
concrete monument capped w/ a  
brass tablet stamped: T148N R27W  
Found in place under  $\begin{array}{c|c} S35 & S36 \\ \hline S2 & S1 \end{array}$   
8" of water Swamp is Flooded T147N  
1936

orig BT  
Tamarack 4" S33°W 27 lks. (17.8')

New  
Tamarack 4" N18½°E 43 lks. (28.4') (Now dead  
Tam. w/ scribe visible at record bearing & dist.)  
Tamarack 8" S82¾°E 116 lks. (76.6') (Now a 10"  
Tam. w/ scribe visible at record bearing & dist.)  
Tamarack 4" S41¾°W 40 lks. (26.4') (Now 5" Tam  
w/ scribe overgrown at record bearing & dist.)  
Tamarack 4" N65¼°W 34 lks. (22.4') Now Tam.  
stump w/ scribe visible at record bearing & dist.  
Steel sign post 72" long w/ F.S. standard  
signs 54-2 & 54-4 attached set South 3.0 feet  
I placed BT shields on Tam BTs

5/13/70 RHM, Donald



Corner Falls T147N  
in a Tamarack swamp - approx. 75' into  
swamp from the east side.



10 A-19 T147-148N Affidavit RHM

Quarter corner sections 35-2

Notes of the G.L.O. resurvey of 1936

Set Iron post 3' x 2" with a brass cap

MKD.  $\frac{1}{4}$   $\frac{S35}{S2}$  Found tipped over 1936 & buried 2 under road shoulder. I set mon. up straight.

White pine 16" N20 $\frac{1}{4}$ °E 173 lks (114.2') Now

a 29" White pine at record bearing & dist

Jack pine 8" S55 $\frac{1}{2}$ °W 51 lks (33.7') Falls in a sheared area

Oak 7 S57°E 63.7 MKD BT

Cedar post 4" x 4" x 6" with F.S. standard

sign 54-4 attached set West 15.5' 15.5'

5/26/70 Robert H. H. H. H.

8/24/74 C. Krause R. Maen

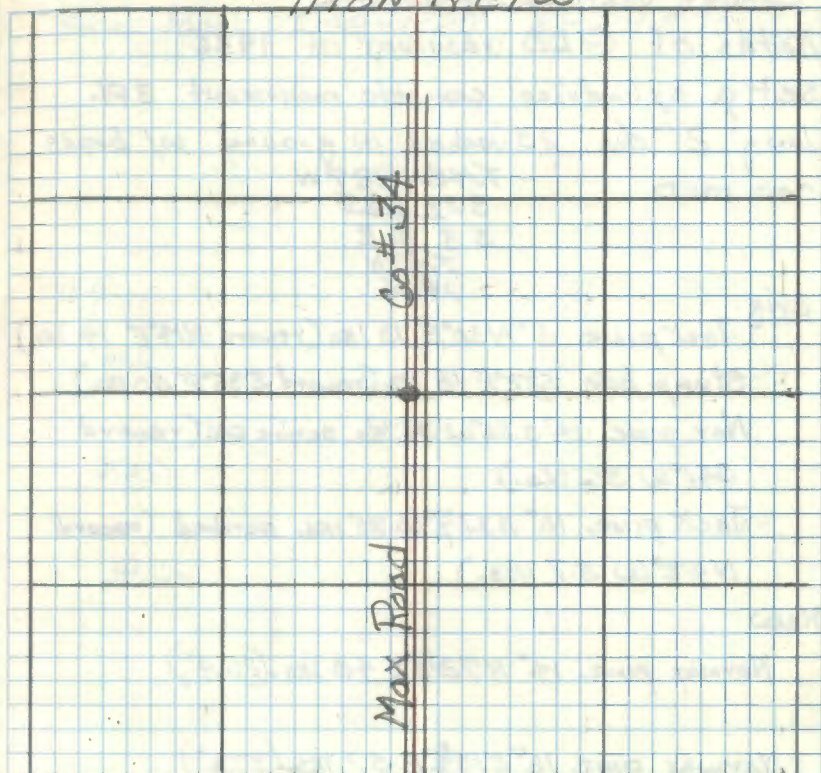
Ed Itasca Co Monument flush with ground 185' west

of center line County Rd # 34 on slope toward ditch

Also woods trail north of monument 115 ft

R9-5680-11 RHM

T148N R27W



T147N

- W PINE (G.L.O.) 33" N20 $\frac{1}{4}$ °E 114.2' Scribe sawed out
- R OAK (1970) 13.5" S57°E 63.075' lower blaze open
- R PINE 13" N50°W 44.105' to spike scribe
- R PINE 11" S28°W 36.0375' to spike scribe
- W OAK 6" (1970) 66°E 55.555' to spike scribe



11 A-17

T147-148N

Corner Sections 34-35-3-2

Notes of GLO resurvey of 1936

set a cylindrical concrete monument 3 ft  
long 2" dia 20 inches in ground w/ brass  
cap MKD.

T148NR27W

S37 S35

S3 S2

T147N

1936

9.24

orig. Jack pine 6" N30°E 13 Iks (record N14°E 14 Iks.)

Stump hole S32°E 48 Iks (record S35°E 50 Iks.)

Nor. pine 14" S36°W 36 Iks. scribe OK (record  
S41°W 36 Iks.) 29.76

Jack pine 10" N37½°W 35 Iks. scribed (record  
N42°W 37 Iks.) 24.42

New

Norway pine 14" N72½°E 40 Iks. (26.9')

Norway pine 16" S13¾°E 57 Iks. (37.6')

Norway pine 12" N16¾°W 45 Iks. (29.7')

R9-5680-11  
OSTM

See Book T198-R27, PP 24 & 70



12 N-7

Quarter Corner secs 17-20  
Notes of GLO resurvey of 1936

Set I.P. 1"  $\phi$  w/ brass cap mko

Found in place  $\frac{1}{4}$  517  
as described  $\frac{1}{4}$  520  
1936

local BT

White oak 18" N14 $\frac{3}{4}$ E 17 Iks (Now 32" w)  
scribe overgrown 11.2'

New.

Elm 6" N48 $\frac{3}{4}$ E 104 Iks (Now a 10" Elm w)  
scribe overgrown 68.6' 38.9'

Ash 5" S40E 59 Iks (Now a 10" Ash w)  
scribe overgrown

May 17, 1966 P.H. McDonald

9-22-94 CK

FD. IRON TAP - IN PLACE - BUT BENT NORTH - STRAIGHTEN  
IRON TO STAND UPRIGHT - IN VERY THICK BRUSH + HARDWOODS  
LARGE OAK WINDFALL AT NISE - 11.2' (DECAYING)

MARKED NEW BT'S.

W. OAK 9 S8W 41.75' mko  $\frac{1}{4}$  520 BT

W. OAK 16 S85W 76.05' "  $\frac{1}{4}$  520 BT

W. OAK 12.5 N7E 114.50' "  $\frac{1}{4}$  517 BT

8" STEEL SIGN POST EAST 3.3'

OLD TAG

GLO BT ELM SNAG 10 N49E 68.6' SCAR FACING CORNER

GLO BT ASH WINDFALL WELL ROTTED S40E = 38.9' OLD TAG



CORNER IS 194' EAST OF FR 2379 - TAG ON ~~FR 2379~~ ON ~~FR 2379~~  
SIDE OF ROAD N+S - N. PINE IS 214' WEST OF CORNER  
CORNER IS 215' SOUTH OF COUNTY ROAD #33 OR FR-2198  
BLAZED 14" W. OAK ON E-W SIDES THIS IS LINE TREE - 139' W  
OF CORNER



13 C-21

Affidavit *RAM*

QUARTER CORNER SECTION 1-2

Notes of G.L.O. resurvey of 1936

No orig. evidence. At proportionate distance set an iron post, 3' x 1" with brass cap

Found in place  $\frac{1}{4}$  S2 | S1

1936

Jack PINE 5" S.  $11\frac{1}{2}^\circ$  E. 94 lks (620)  
 Now a windfall w/ scribe visible at record bearing & dist.

Tamarack 3" N.  $33\frac{3}{4}^\circ$  W. 29 lks (191)

Now a 1" dead Tam. at record bearing & dist

Jack PINE 8" S.  $75^\circ$  W. 55 lks (362)

Now a 16" stub at record bearing and distance scribe plainly visible.

I placed B.T. shields on the 2 standing

B.T.s 4-1-70 *RAM Donald*

Steel sign post with F.S. standard signs

54-2 & 54-4 attached set West 5.7 feet

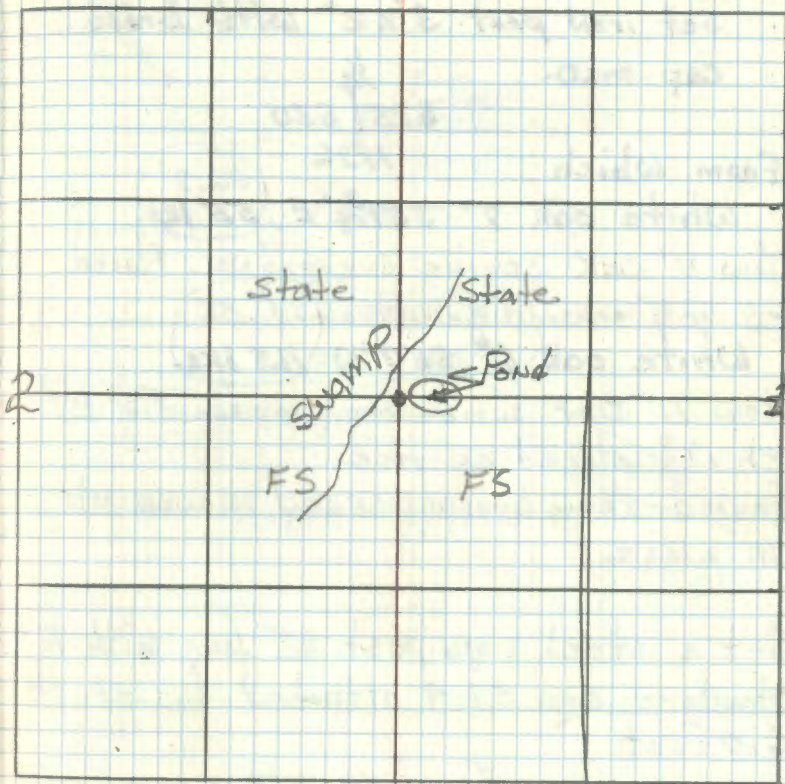
Jack pine 11" S  $66^\circ$  W 15.3' MKD  $\frac{1}{4}$  S2 BT

Jack pine 7" S  $13^\circ$  E. 14.8' MKD  $\frac{1}{4}$  S1 BT

5-12-70 *RAM Donald*

R9-5680-11/11/11

Corner falls on edge of pond (west edge)





14 T-1 Affidavit ~~AMM~~ R27-28

Quarter Corner Sec's 25-30  
Notes of GLO resurvey of 1936  
Set iron post 3' x 2" with brass  
cap MKD.

$\frac{1}{4}$   
S25 | S30

From which

1936

White oak  $7^{\circ} 55\frac{3}{4}^{\circ} E$   $55$  Iks.  $36.3'$

Now 11" oak scribe overgrown. Placed

F.S. BT shield on tree  $74.58$

White oak  $6^{\circ} 55' 7'' W$   $115$  Iks.

Now 11" oak scribe overgrown. F.S. BT.  
shield placed on tree

Found the brass capped monument  
in place

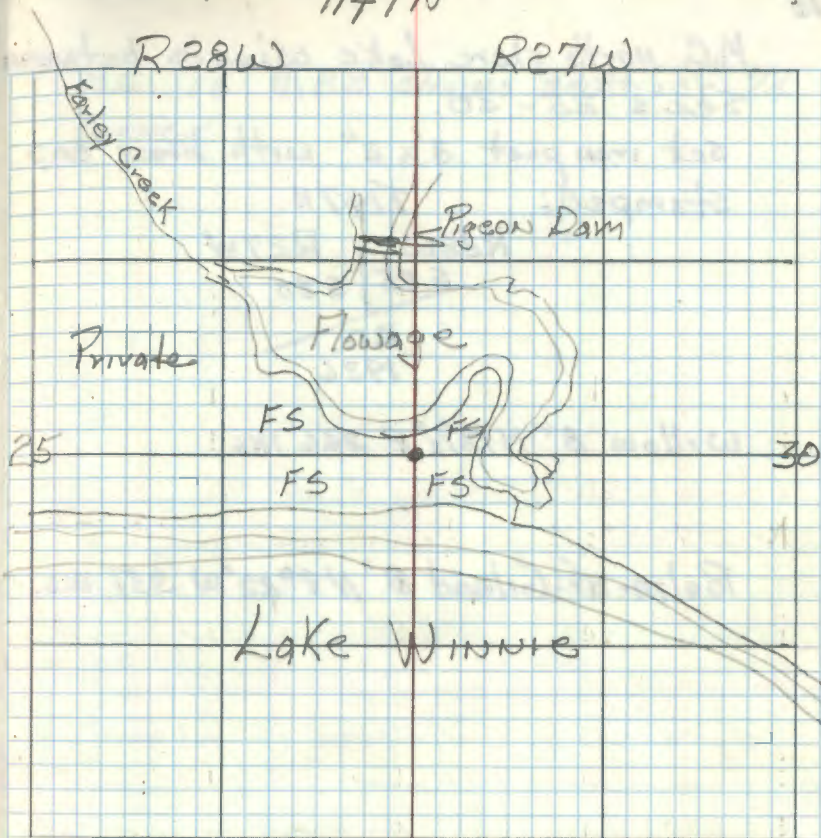
Set a steel sign post 72" long with F.S.  
standard sign 54-4 attached due south  
6.0 feet

April 22, 1969  
G.H.M. Donald

T147N

R28W

R27W





15

M.C. north shore Lake Winnie between  
Sec's 25-30

set iron post 3' x 2" with brass cap  
stamped:

T147N	
R28W	R27W
S25	S30
M.C.	
1936	

Willow 8° N13½° E 366 1ks

Balm-of-Gilead 8° N9°22' W 351 1ks.

C
2106
2106
23166

M.C. is 11.82 chains south of ¼  
CORNER



16 R-1(wc) Affidavit *RAM* R9-5680-11 *RAM*

Witness Corner For Sec. Corner of  
19-24-25-30

Set cylindrical concrete monument  
6"  $\phi$  with brass cap stamped:

Found monument  
tipped west  
bottom end is  
in place.

W.C.  
T147N  
R28W | R27W  
S24 | S19  
625 | 530  
1986

Burr Oak 8" N2 $\frac{1}{4}$ °E 83 IKS. (Now a  
17" oak scribe overgrown N7 $\frac{1}{2}$ °E 54.8')

White pine 20" N19 $\frac{1}{2}$ °W 154 IKS.  
Now a 26" white pine scribe <sup>14 $\frac{1}{2}$</sup>  visible N14 $\frac{1}{2}$ °W  
101.6 Feet.)

Set a steel sign post 92" long with  
F.S. standard sign 54-4 attached - due  
North 9.0 feet.

April 22, 1969  
*G.H.M. Donald*

10-6-94 RM-CK

Fd. CONCRETE CYLINDER - LYING ON GROUND  
FROST HEAVED OUT OF POSITION

Fd. 30" W. PINE AT N14°W - 101.64' OPEN SCAR

Fd. 22" W. OAK AT N7°E 54.78' SCAR

CORNER IN MARSH GRASS AND EDGE OF BRUSH  
NO SIGN POST REMAINS AT NORTH 9.0'

10-6-94 RM-CK  
WE BELIEVE CONCRETE MONUMENT - WOULD IN  
SHORT TIME - PUSH UP AGAIN AND BE OUT OF  
POSITION - SO WILL SET  $\frac{3}{4}$ " ROD MONUMENT  
FROM GLO BT'S. AT TRUE POSITION

CURT KRAUSE

10-11-94 CK  
PLACED 60° SPIKE IN CENTER OF BOTH GLO BT'S.  
AND PULL DISTANCES TO MARK LOCATION OF COR.

SET 3-24" FLANGED RODS AND POINT FROM TIES  
ROD IS FLUSH WITH GROUND - PLACE ALUM CAP  
ON TOP WHICH IS MARKED.

PLACED MAGNETIC PELLET  
NORTH AND ALONG SIDE  
ROD MONUMENT  
BRUSH DIRT AND GRASS OVER  
CAP

MONUMENT IS  $\frac{3}{4}$ " X 6' LONG

MARKED NEW BT

W. PINE IS N41°E - 16.84' MKD JUST BT

8' STEEL SIGN POST SOUTH 3.45'

CORNER IS APPROX. 40' WEST OF WATER'S EDGE  
225' EAST OF FR 3148  
OPEN MARSH AND WATER TO SOUTH AND EAST  
NEW W. PINE BT IS LAST TREE ON POINT OF HIGHLAND

THERE IS A LOT OF ACTIVITY IN AREA - RICING + HUNTING  
WALKING TRAIL IS JUST NORTH OF GLO OAK - E+W

DIDN'T TAG BT'S. AS OLD TAGS HAVE BEEN SHOT UP  
IN PAST YEARS

Fd. 6" STEEL POST LYING IN MARSH GRASS 25' NW  
OF CORNER - REMOVE FROM SITE

BROKE CAP OFF GLO MONUMENT AND LEFT  
CONCRETE BASE BURIED IN MARSH  
GLO MONUMENT WAS ABOUT 2' NW OF TRUE  
LOCATION LYING UNDER TOP OF MARSH

SCRIBE VISIBLE INSIDE SCAR ON 30" W. PINE  
W. OAK BT HAS SCAR FACING CORNER

T147N R27W  
W.C.  
S24 | S19  
R28W | S25 | 530  
1994  
USFS



17

Quarter Corner Sec's 19-24

GLO resurvey of 1936

Set iron post 3' x 2" with brass

Cap stamped:  $\frac{1}{4}$ 

S24 | S19

1936

Ash 6" S72°E 27 lks.

17.82'

Burr Oak 7" S47°<sup>W</sup> 76 lks.

50.16

9-21-94 CK

SEARCH WITH LOCATOR AND Fd. GLO IRON LYING  
 16" UNDER FR 3148 - DON'T BELIEVE IRON IS IN  
 PLACE - NO BT EVIDENCE REMAINS NEAR IRON  
 BELIEVE ROAD CONSTRUCTION MAY HAVE DISTURBED  
 TRUE LOCATION - WILL HAVE TO TRAVERSE IN NEW  
 POSITION



18N-23 89-5680-11 RHM

Quarter Corner Sec's <sup>13</sup> 23-24  
Notes of GLO resurvey of 1936  
Set 1"  $\phi$  iron post w/ brass cap

MKD. Found in  $\frac{1}{4}$  S13  
place  $\frac{1}{4}$  S24  
1936

New BTs

Tamarack 5" N30 $\frac{3}{4}$ ° E 50 IKs (33.6')

(New dead Tam. N33° E 33.8')

Tamarack 5" S84 $\frac{1}{4}$ ° E 62 IKs (40.9')

(New Tam. stub S84° E 40.9')

Local BT - Spruce 6" N41° W 47 IKs (31.6')

Cedar 6" S41° E 33.0 feet MKD

Black Spruce 8" S39° W 40.8 feet MKD

Cedar 4" N40° W 63.0 feet MKD

SET STEEL SIGN POST, 12.2' EAST



19

Cor. Sec's 13-14-23-24

Notes of GLO resurvey of 1936

Set 6"  $\phi$  cylindrical con. monument  
w/ brass cap MKO. T147NR27W

S19 S13

823 S24

1936

Remains of orig. BTs

Burned jack pine stp. 20" N57 $\frac{1}{2}$ ° E 64 IKS (42.2')

Fallen Norway pine 26" S30° E 39 IKS. (25.7')

Norway pine stp. 28" S72° W 40 IKS. (26.4')

Fallen Norway stub 28" N20° E 34 IKS (22.4')

New BTs

Norway pine 17" N4 $\frac{1}{2}$ ° E 67 IKS (44.2')

Norway pine 5" S31° E 13 IKS (8.6')

Jack pine 5" S21 $\frac{1}{2}$ ° W 13 IKS (8.6')

NOW A STUMP / W/ SCRIBE VISIBLE

Norway pine 26" N83 $\frac{1}{2}$ ° W 145 IKS (95.7')

(REMOVED BY HWY #46)

8/17/89 R MAZIN

Ed GLO MONUMENT IN GOOD CONDITION. 6"  
ABOVE GROUND.  $\pm$  100' EAST OF HWY #46. LOCATION  
POSTER ON A 6" R PINE FROM WHICH CORNER BEARS  
NORTH 60 FT. TREE AT DITCH BACK SLOPE, EAST  
SIDE OF HWY #46

North from 1/4 between 23-24 41.58 ch

73.00 ch. leave swamp

73.80 ch  $\phi$  ST Hwy #46

83.16 Point for corner Sec 13-14-23-24

East from Cor between 13-24 N67°35' E

WITNESSED BY

GLO R PINE 18" S31° E 8.62 NAI/

GLO R PINE 20" N5° E 44.40 NAI/

NEW R PINE 15" N46° W 25.60 " S14 BT" NAI/

NEW R PINE 6" S28° W 8.53 ~~S23~~ " S23 BT" NAI/

SIGN POST 4.31' WEST



20 A-23 R9-5680-11 <sup>WAM</sup>

Quarter Corner Sec's 24-25

Notes of GLO resurvey of 1936

Set iron post w/ brass cap MKD

$\frac{1}{4} \frac{524}{525}$   
1936

New BT's

Jack pine 5" S 91 $\frac{1}{2}$ ° E 40 lks. (26.4')

Now stump scribed BT at record bearing & dist

Norway pine 5" N 39 $\frac{1}{4}$ ° W 23 lks. (15.2')

Now a 11" Red pine at record bearing & dist.

I placed BT shields on the 2 BT's

4/28/70 P.H.M. Donald

N 65° 55' E 37.84 Ch. at  $\frac{1}{4}$  Cor

41.50 Ch. enter swamp

48.20 Ch. Leave "

69.20 Ch. enter swamp

75.68 Ch. Cor sec's 19-24-25-30

Orig. BT's

Tamarack 4" S 10° W 16 lks

Tamarack 4" N 13° E 9 lks



21 P-21

R9-5680-11 RHM

Quarter Corner Sec's 23-24

Notes of GLO resurvey of 1936

set iron post 1"  $\phi$  with brass cap

$\frac{1}{4}$   $\$$  found in place

523 / 524

1936

New BTs

Cedar 4" N23°E 32 Iks. (21.1') Now a  
13" Cedar at record bearing & dist.

Cedar 4" N53 $\frac{3}{4}$ °W 10 Iks. (6.6') Now a  
11" cedar at record bearing & dist.

I placed F.S. BT shields on the 2  
Cedar BTs. Corner falls on South  
edge of cedar swamp.

4-28-70 RHM

Orig. Tam. 6" N50°E 30 Iks.

Cedar 8" S70°W 80 Iks.



22 N-22

West  $\frac{1}{16}$  Corner Sections 13-24

Corner set by proportional measurements

Set a 2" inside dia. 5' long galvanized  
steel pipe filled with concrete and  
capped with a 3" dia. bronze tablet  
stamped:

T147N R27W

$W\frac{1}{16}$   $\frac{S13}{S24}$

1970  
RLS NO 6807

Red pine 10" N12°E 45.8' MKD  $W\frac{1}{16}$  S13BT

Red pine 10" S39°W 44.4' MKD  $W\frac{1}{16}$  S24BT

Red pine 12" S37°E 22.0' MKD  $W\frac{1}{16}$  S24BT

Cedar post 4" x 4" x 6' with Standard FS 54-2

and 54-4 attached, set N67°35'E 9.0 FT.

April 9, 1970 Robert W. Donald

Affidavit RHW

YACC MARKED LINE TO STANDARD 2/79  
& PLACED STEEL SIGN POST 3.1' EAST OF  
MONUMENT.



23 L-21 R9-5680-11 RAM

Quarter Corner Sec. 13-14

Notes of GLO Resurvey of 1936

Set by prop. measurement no orig. Found  
set 1"  $\phi$ , 3' long iron post with brass  
cap MKD.

(Found in place)  $\frac{1}{4}$   
S14/S13  
1936

From which

Jack pine 10" N47 $\frac{1}{4}$ °E 18.1ks (11.9') (Now a  
Tipine stump 10" N47 $\frac{1}{4}$ °E 11.9')

Jack pine 11" NB2°W 32.1ks (21.1') (Now a  
Jack pine 11" NB2°W 21.1 feet)

I placed BT shields (Tags) on these 2  
BT's

Red Pine 12 inch N78°E 68.5 ft MKD  $\frac{1}{4}$  S13 BT

April 9, 1970 J. McDonald

Affidavit RAM



24

R9-5680-11 ~~11111~~

Corner Secs. 11-12-13-14  
Notes of GLO resurvey of 1936  
Set 6"  $\phi$  24" long with brass cap MKD

T147N R27W

S11 | S12

S14 | S13

1936

Remains of orig.

Stump hole N68 $\frac{1}{2}$  $^{\circ}$ E 53 Iks (35.0')Rotted stump 14 $^{\circ}$ S17 $^{\circ}$ E 76 Iks. (50.2')Norway pine stub 24" S36 $\frac{3}{4}$  $^{\circ}$ W 99 Iks. (62.8)

Now -

Jack pine 11" N39 $\frac{1}{2}$  $^{\circ}$ E 35 Iks. (23.1')

Norway pine 7" S54E 23 Iks. (15.2')

Norway pine 12" S83 $\frac{3}{4}$ W 37 Iks. (24.4')

Jack pine 12" N63W 60 Iks (39.6')



25 J-21

Quarter Cor. Sec's 12-13

Notes of GLO resurvey of 1936

Set 1"  $\phi$  3' long iron post w/ brass cap

proportionate  
measure

$\frac{1}{4}$   $\frac{S12}{S13}$   
1936

Found in  
Place

Tamarack 3" N58 $\frac{1}{4}$ °E 261ks. (17.2') Now a  
7" Tam. at record bearing & dist.

Tamarack 3" S66 $\frac{1}{2}$ °W 191ks. (12.5') Now a  
7" Tam. w/ scribe overgrown, at record  
bearing & dist.

5/1/70 RHM Donald



26 G-21 Affidavit RHM

Quarter Corner Secs. 11-12

Notes of GLO resurvey of 1936

Set 1"  $\phi$ , 3' long iron post w/ brass cap

Found in place

$\frac{1}{4}$

Prop. measure

S11 | S12

1936

Jack pine 6" S85E 12 lks. (7.9') Now a decayed jack pine stump at record bearing & dist.

Jack pine 6" S81W 7 lks. (4.6') Now a

jack pine windfall with scribe visible at record bearing & dist.

I marked new BTs

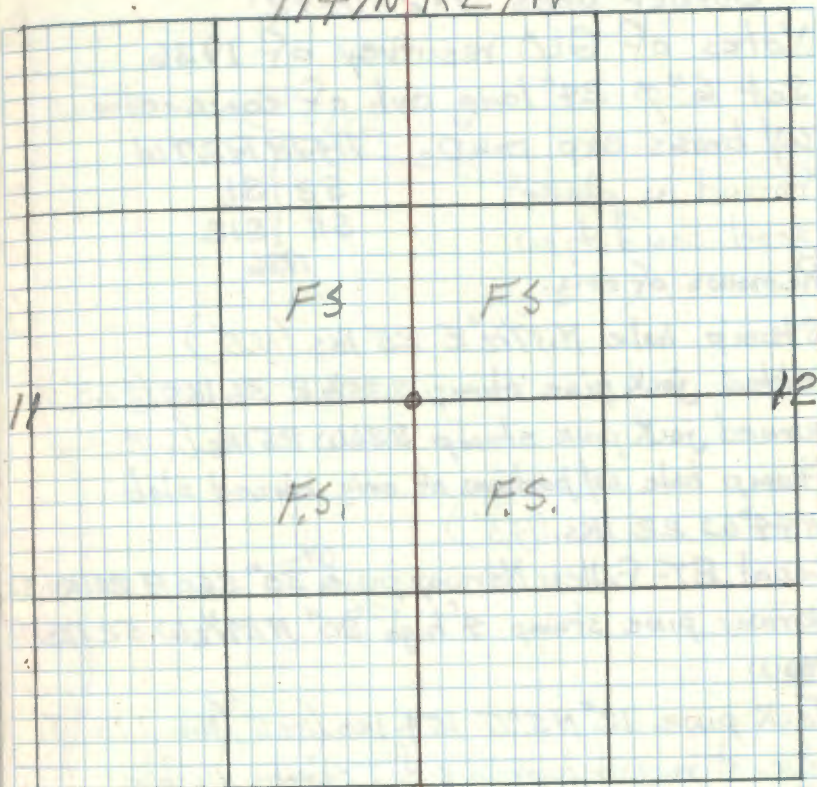
Jack pine 10" S16 $\frac{1}{2}$ ° E 10.8' MKD  $\frac{1}{4}$  S12 BT

Jack pine 10" N55° W 8.8' MKD  $\frac{1}{4}$  S11 BT

I placed F.S. standard sign 54-4 on the NW BT

5-14-78 R.H. McDonald

T147N R27W





27 E-21 Affidavit RHM

Corner Sec's 1-2-11-12  
Notes of GLO resurvey of 1936  
Set 6"  $\phi$  24" long cyl. of concrete  
w/ brass cap MKD. T147N R27W  
Found in place  
good condition  
Remains of orig.

Stump hole N37 $\frac{1}{2}$ °E 25 lks. (16.5')  
rotted jack pine stump S35 $\frac{1}{2}$ °E 36 lks. (23.8')  
burned jack pine stump S36W 25 lks. (16.5')  
Stump hole w/ portions of orig blazed slab  
N44°W 22 lks. (14.5')

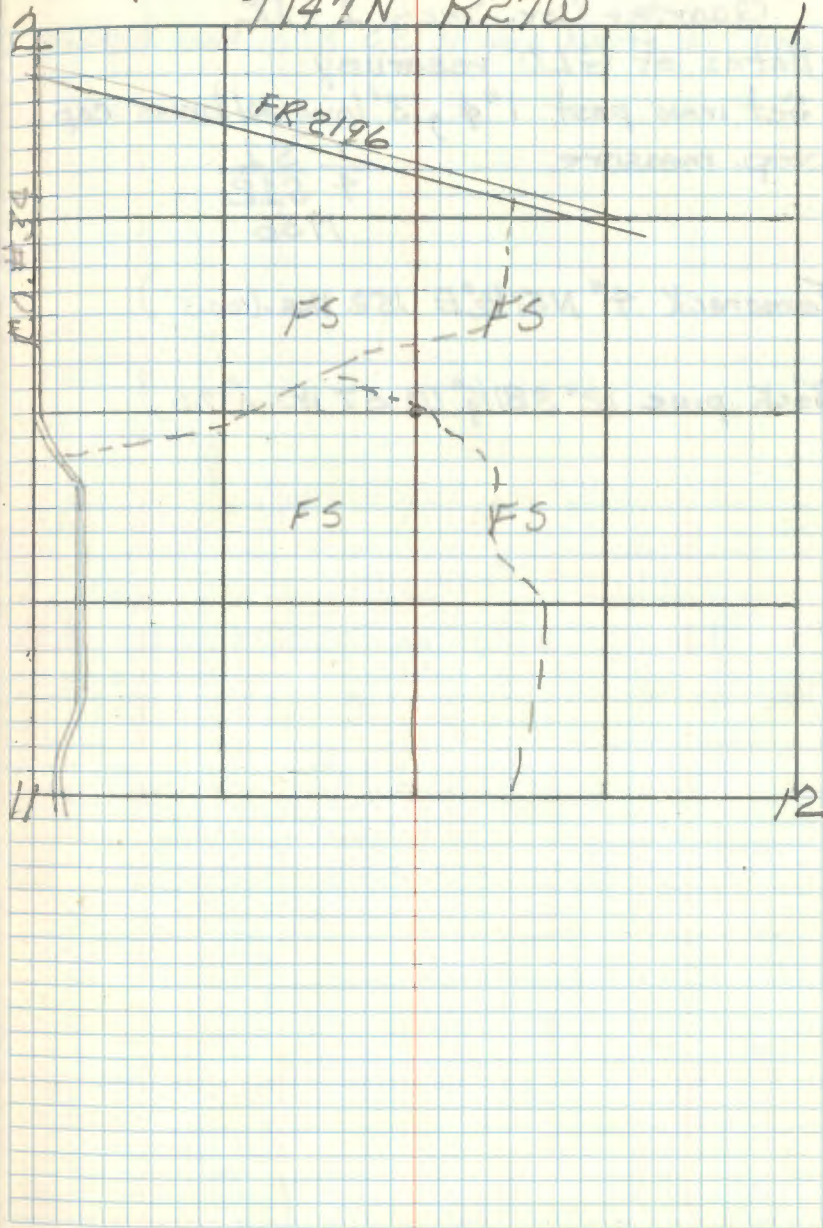
Local BT- Fallen Norway pine <sup>DK</sup> 30" S60°E 20 lks. (13.2)  
Norway pine stump 4' high <sup>DK</sup> 20" N29 $\frac{1}{2}$ °W 52 lks. (34.3)

New

Jack pine 12" N5°E 154 lks. (101.6') (Now a 18" J.  
pine at record bearing & dist. scribe visible)  
Jack pine 14" S19 $\frac{1}{4}$ °E 72 lks. (47.5') (Now 18" J.  
pine at record bearing & dist. scribe visible)  
Jack pine 7" S73 $\frac{1}{4}$ °W 63 lks. (41.6') (Now a 12"  
Jack pine at record bearing & dist. scribe visible.)  
Jack pine 9" N73 $\frac{1}{2}$ °W 46 lks. (30.4') (Now a  
16" Jack pine at record bearing & dist. scribe visible)  
Set a steel sign post w/ F.S. sign 59-4 attached  
South 2.0 feet. 5-12-70 RHM McDonald

R9-5680-11 RHM

T147N R27W





28

Quarter Cor. Sec's 1-12

Notes of GLO resurvey

Set iron post 1"  $\phi$ , 3' long w/ brass cap

prop. measure

$$\frac{1}{4} \frac{S1}{S12}$$

1936

Tamarack 4" N51 $\frac{1}{2}$ °E 152 lks. (100.3')

Jack pine 12" S81 $\frac{1}{4}$ °W 57 lks. (37.6')

Graded road is 3.02 chains north of Cor.



29 C-25

R26-27W

Quarter Corner Sec's 1-6

Notes of GLO resurvey of 1936

Set iron post 1"  $\phi$ , 3' long w/ brass cap

Found brass cap in

place (2")

$\frac{1}{4}$   
S1 | S6  
1936

orig.

Norway pine 30" S73°E 40 lks. (26.4') Now a <sup>distance</sup> Red pine stump w/ scribe partly visible at record Bearing

Fallen Norway 28" S65°W 6 lks. (4.0') Now Fallen

pine at record bearing & dist

New Jack pine 6" N70½°E 34 lks. (22.4') Now a 12"

Jack pine at record bearing & dist. 23.1'

Jack pine 6" S43½°W 16 lks. (10.6') Now 12"

Jack pine at record bearing & dist. 10.0' scribe overgrown)

Steel sign post 72" long with F.S. sign 54-4 attached set South 3.7'

I placed F.S. Bearing tree shields on the 2 Jack pine BT's

5/12/70 RMM Donald

Also found a squaved scribed post laying at corner - may be original. RMM

Affidavit RMM

Cor. Falls 1 ch. East of swamp



30 E-25 H. H. Davidson R. 26-27W

Corner Sec's. 1-12-6-7

Notes of GLO resurvey of 1936

Set 6"  $\phi$  cylindrical concrete monument

with brass cap MKD T147N

Found in place. R27W R26W

S 1 | S 6

S 12 | S 7

1936

orig.

Jack pine 10" N33 $\frac{3}{4}$ ° E 24 Iks. (15.8') Now stump  
and wind fall at record bearing & dist. scribe BT visible

Jack pine stump 10" S26 $\frac{1}{2}$ ° E 24 Iks. (15.8') (Now  
decayed pine stump at record bearing & dist.)

Jack pine 12" N46 $\frac{3}{4}$ ° W 29 Iks. (19.1') (Now pine  
stump scribed "BT" at record bearing & dist.)

New

Jack pine 16" S75 $\frac{1}{2}$ ° E 52 Iks. (34.3') Now a Jack  
windfall with scribe visible at record bearing & dist.

Jack pine 14" S37° W 40 Iks. (26.4') Now a jack  
pine stump scribed BT at record bearing & dist.

Steel sign post 72" long with F.S. standard sign  
54-7 attached set East 3.8'

Red pine 6" N64° W 5.9 Feet MKD S 1 BT

Red pine 7" S48° W 20.2 Feet MKD S 12 BT

Spruce 7" S21° E 28.2 Feet MKD S 7 BT

5/12/70 Robert H. McDonald

7-27-00 RMAJN

Fd MONUMENT IN PLACE UP 3". CORNER IS 200 FT  
EAST OF FR 2087. FIND 1970 B.T.S. IN GOOD  
CONDITION. REPAIR 6" NOW 13". REPAIR 7" NOW 11".  
SPRUCE 7" NOW 11". GASED CORNER.



## Quarter Corner Sec's 2-11

Notes of GLO resurvey of 1936

Set 1"  $\phi$ , 3' long iron post w/ brass

cap MKD.

Set 4" beneath road surface

 $\frac{1}{4}$  S2  
S11  
1936IRON & CAP UNDER BLACKTOP - IN PLACE 1<sup>3</sup>/<sub>4</sub> FT <sup>8/7/94</sup> DeepNorway pine 12" N77 $\frac{1}{4}$ °E 46 lks. (30.4')

NOW 22" N. PINE AT N78°E - 30.4' SCAR TO COR.

Norway pine 6" S43 $\frac{1}{2}$ °W 50 lks. (33.0')

NOW 20" N. PINE AT S43°W - 33.0' SCAR TO COR.

8/17/94 CK/TJW/GR SET SPIKE @ S3°S. SIDE

8-11-94 CK

FOUND THESE BT'S. WITH SCRIBE VISIBLE - MARKED

By R. H. McDONALD 6-24-66 - FROM DATE ON TAG

ON GLO N. PINE (BOTH)

BT'S TAGGED AND SPIKE PLACED 8-11-94

N. PINE 15.5" S60°E 4/60 SET SPIKE/W NE SIDE

N. PINE 15.5" S22°W 37<sup>25</sup> SET SPIKE/W NE SIDE

N. PINE 15.5" N87°W 4/63 SET SPIKE/W S SIDE

8/17/94 TJW/GR/CK MEASURED

DISTANCES SET SPIKES

CORNER IS IN BLACKTOP COUNTY RD #34  
1.3' WEST OF CENTERLINEUSED LOCATOR TO LOCATE IRON - DIDN'T DIG  
OUT NOW - AS I DIDN'T HAVE PATCHING MATERIAL  
WITH - WILL BEING ALONG NEXT VISIT

8-17-94

FOUND GLO IRON 1.3' BELOW BLACKTOP SURFACE - COUNTY ROAD  
#34 - PATCHED WITH COLD MIX BLACKTOP  
TIES ARE TO CENTER OF BRASS CAP  
ALL BT'S. ARE IN GOOD SHAPE "I" TAGS



32 C-9

Quarter Corner Sections 4-5  
Notes of GLO resurvey of 1936  
Set a 1"  $\phi$ , 3' long iron post w/a  
brass cap MKD.  
prop. measure  $\frac{1}{4}$   
55 | 86  
1936

Spruce 5° S 63 $\frac{1}{4}$ ° E 24 Iks. (15.8')

Spruce 4° S 10 $\frac{3}{4}$ ° W 37 Iks. (24.4')

1940 W. HABERLE 874-9

Fd IRON PIPE IN GOOD CONDITION  
WITH BEARING TREES INTACT. PLACED  
METAL TAG ON BT.

8/10/89 R. MAZIN C. KRAUSE

Fd I.P. IN GOOD CONDITION UP 6" IN A BLACK SPRUCE  
TAMARACK SWAMP. GLO SPRUCE BT @ 15.8' HAS  
BEEN TAKEN DOWN. SCRIBE VISIBLE ON STUMP. NO EVIDENCE  
OF SW BT.

WITNESSED BY

TAMARACK 5" N35W 41.20 TO NAIL

BLACK SPRUCE 5" S38E 34.00 TO NAIL

BLACK SPRUCE 6" S79W 40.48 TO NAIL

6" STEEL SIGN POST EAST 2.0'

LOCATION POSTER ON A 19" R PINE FROM WHICH CORNER  
BEARS S 87° E 415'. ON THIS BEARING ENTER  
SWAMP @ 175 FT. CORNER FALLS IN SWAMP 240 FT.  
LOCATION POSTER ON EAST SHOULDER OF FR 31/45 ON THE  
SE EDGE OF A R PINE PLANTATION AND 100 FT NE  
OF A SWAMP.



33 E-9

Corner Sections 4-5-8-9

Notes of GLO resurvey of 1936

Set a 6"  $\phi$ , 24" long cylindrical concrete monument w/ brass cap mxd T147N R27W

S5	S4
S8	S9
1936	

orig. BTs

Dead jack pine 12" S51°E 40 lks. (26.4')

Jack pine 12" S20½W 50 lks. (33.0')

NEW

Jack pine 8" N64½E 54 lks. (35.6')

NO EVIDENCE

Jack pine 5" S31E 20 lks. (13.2')

NO EVIDENCE

Norway pine 9" S58W 32 lks. (21.1')

Norway pine 10" N7W 7 lks. (4.6')

8/10/89 R. MAIN C. KRAUSE

Fd GLO MONUMENT up 2" FROM GROUND.  
Fd NO EVIDENCE OF ORIGINAL OR GLO J PINE

OLD BT

GLO R PINE 15" S 58W 21.1' |W/SCREE VISIBLE

GLO R PINE 14" N7W 4.6'

NEW R PINE 20" S 63E 44.90 TO NAZ1

NEW R PINE 11" N58E 36.35 TO NAZ1

6" STEEL SIGN POST EAST 5.07'

LOCATION TAG ON Q 22" R. PINE ON THE EAST SHOULDER OF FR 3145 FROM WHICH CORNER BEARS S 74E 332'. A BIASED LINE LEADS TO THE CORNER FROM THE GLO SURVEY.



Quarter Corner Sec's 18-19

Notes of GLO resurvey of 1936

Set a 1"  $\phi$ , 3' long iron post w/ brass

cap MKD.

$\frac{1}{4}$   $\frac{S18}{S19}$

orig.

pine stump 12" S34W 181ks (11.9')

local BT

White pine 36" N13E 561ks (37.0')

<sup>New</sup> White oak 5" N40 $\frac{1}{2}$ E 781ks (51.5')

White oak 5" S52 $\frac{1}{2}$ E 641ks (42.2')



Corner Sections 17-18-19-20  
Notes of GLO resurvey of 1936  
Set 6"  $\phi$ , 24" long cyl. concrete monument  
w/ brass cap MKD

T147N R27W

S18	S17
S19	S20
1936	

orig.

burned pine stump N44°E 40 lks. (26.4')  
Fallen stub S56°E 39 lks. (25.7') FALLS IN CLEARING  
Local b.T.s

Jack pine 12" S52E 45 lks. (29.7')

FALLS IN FR 3865

Jack pine 12" S39E 10 lks. (6.6')

NOW WINDFALL LYING NEAR COR. W/ SCRIBE VISIBLE

Norway pine 14" N48½E 61 lks. (40.3')

FALLS IN ROAD CLEARING

White pine 5" S26¼E 24 lks. (15.8')

NOW WELL ROTTED PINE STP. AT S26E 15.8'

Norway pine 16" S20½W 50 lks. (33.0')

NOW 24.5" N. PINE AT S20W 32.75 SCAR TO COR.  
SPK IN BT

White pine 8" N9½W 44 lks. (29.0')

NOW ROTTED PINE STP. AT N9W 29.0 W/ BT AT BASE

7-21-86 Visited by B. Ausk, M. Drotts

Found Monument and one bt Left

Corner should be fixed up.

9-29-94 CK

FR. CONCRETE MONUMENT - IN PLACE - 3" ABOVE  
GROUND - IN THICK BRUSH AND N. PINE

30' WEST OF FR 3865 AND 350' NORTH OF  
COUNTY ROAD 33 OR FR 2198

MARKED NEW BT'S.

N. PINE 21 S42E - 18.95 MKD S20 BT

N. PINE 23 N78W - 17.41 " S18 BT

N. PINE 21 N10W - 41.86 " S18 BT

8' STEEL SIGN POST WEST 3.8'

FR. 6" POST LYING ON GROUND NEXT TO COR. - SCRIBED  
WITH SECTION NUMBERS - STOOD UP NEXT TO COR.



36 6-5

Quarter Corner Sections 5-6

Notes of GLO resurvey of 1936

By proportionate measure set iron post 1"  $\phi$ , 3' long w/ brass cap MKD.

$\frac{1}{4}$   
56 | 55  
1936

Jack pine 7" N51 $\frac{3}{4}$ °E 36 lks. (23.8')

Norway pine 10" S35 $\frac{1}{2}$ °W 33 lks. (21.8')

R9-7150-4 by R. Olesen 5/19/80

1940 W. HABERLE Form 874-9

Fd IRON PIPE AND BEARING TREES IN GOOD CONDITION. PLACED METAL TAG ON BT.

5-19-80 R. OLESEN

REPLACED SHEARED OFF GLO WITH 2" X 5' PIPE W/ BRASS CAP MKD

TW7NR27W

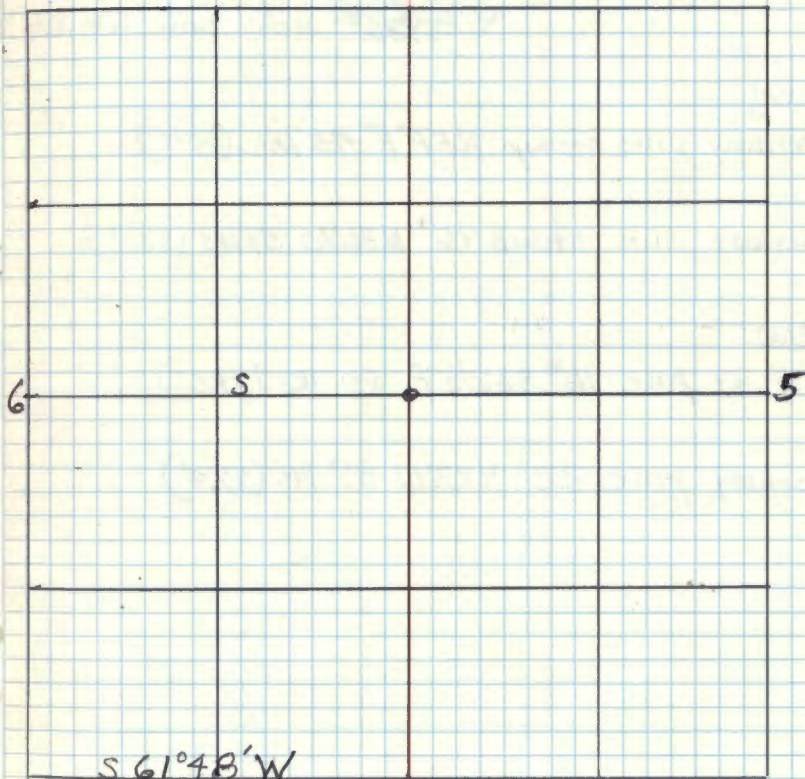
K1  
56 | 55  
1980

GLO TAPE NOW A STRIP WITH SCARCE VISIBLE

GLO TAPE 14" S35W 21.78ft

8ft STEEL SIGN POST NORTH 1.8ft

78  
45.70  $\frac{1}{4}$  Corner } N0°43'E between 5-6  
61.00 Graded road } 15.30 chains





Quarter Corner Sections 8-9  
 Notes of GLO resurvey of 1936  
 Set 1"  $\phi$  iron post 3' long w/brass cap  
 MKD:-

58  $\frac{1}{4}$  59  
 1936

Orig.

Norway pine stump N58°E 45 lks. (29.7')

Norway pine stump 16" N26°W 51 lks. (33.7')

New

Norway pine 16" S62½°E 60 lks. (39.6')

Norway pine 22" N23°W 87 lks. (57.4')

From M.C. on North East shore Biauxwah  
 N1°35'E between Sec's 8-9  
 9.78 ch. ¼ Cor.  
 13.90 Graded road (FR 2171)  
 43.41 Sec. Cor. 4-5-8-9



Quarter Corner Sec's 7-8

Notes of original GLO resurvey of 1936

Set iron post 1"  $\phi$ , 3' long w/ brass cap  
MKD.

$\frac{1}{4}$   
S 71° 58'  
1936

Orig. Jack pine stub 14" N 86° E 10 Iks (6.6')

Jack pine 24" S 17½° W 25 Iks (16.5')

New Norway pine 4" N 61½° E 26 Iks (17.2')

Norway pine 16" S 60½° W 32 Iks (21.1')



Quarter Corner Sec's 8-17

Notes of GLO resurvey of 1936

Set a: 1"  $\phi$ , 3' long iron post w/ brass  
cap MKD.

$$\frac{1}{4} \frac{58}{317}$$

1936

Norway pine 6" S81°E 151ks. (9.9')

White pine 10" South 101ks. (6.6')

From Cor. Sec's 7-8-17-18 S68°18'E

51.77 Chs. 1/4 Cor. 8-17

89.90 M.C. on West shore Biauwsajah Lake



40

M.C. on West shore Biauawahi lake between  
sea's 8-17

Notes of GLO resurvey

Set iron post 1"  $\phi$ , 3' long w/ brass cap

MKD:-

T147N

S8

M.C.

S17

R27W

1936

origo white pine 16" S14°W 321ks. (21.12')

New white pine 6" S40½°W 1111ks. (73.3')

white pine 7" N41½°W 921ks. (60.7)



41 V-23

R9-5680-11 RHM

Quarter Corner Sect. 25-36

Notes of the GLO resurvey of 1936

set iron post 1"  $\phi$  x 3' long

with a brass cap marked:  $\frac{1}{4}$

(Found brass cap marking)  $\frac{525}{536}$   
Corner 1936

Norway pine 5" N54°E 60 IKs (Now a decayed  
wind fall at record bearing & dist.

Jack pine 6" East 47 IKs. (Now a jack  
pine stump at record bearing & dist.

Found 4" x 4" x 6.5' Red top cedar post w/  
F.S. location poster south 0.8 feet

N64°28'E between Sec's 25-36

39.02 set 1/4 Cor.

48.10 set M.C. on West shore little Cut Foot



42

R9-5680-11 <sup>RAM</sup>

M.C. Sec's 25-36 West shore Little Cut  
 Notes of GLO resurvey of 1936 <sup>Foot</sup>  
 set iron post w/ brass cap MKD T147N

S 25	MC
S 36	
R 27 W	
1936	

Jack pine 6" S 5 1/2" W 102 lks.

Jack pine 6" S 7 1/4" W 96 lks.



43

SEC COR. 19, 30, 25, 24

ORIGINAL GOV. SURVEY 1873

FROM WHICH

OAK 15" N12°W 33.0'

OAK 12" S59°W 56.76'

N. PINE 18" N87<sup>1</sup>/<sub>2</sub>°E 153.12

JUNE-OCT 1936 GLO RESURVEY BY CRAFG Ag 27-28

POINT FOR COR DETERMINED FROM ORIGINAL BT

STUMP. 16" OAK N12°W 50 IKS. POINT FOR

CORNER FALLS IN RIVER. SET WITNESS

CORNER 3.6 CHAINS NORTH OF TRUE CORNER.

SET CONCRETE MONUMENT 24"X6" 20 IN LINES IN THE

GROUND WITH BRASS CAP MKD:

WC	
T147N	R27W
R28W	R27W
524	519
525	530
1936	

MKD TWO NEW WITNESSES

BURROAK 8" NZ4E 63 IKS 41.58 FT

W PINE 20" N19<sup>1</sup>/<sub>2</sub>°W 154 IKS 101.64 FT



N-1 SEC. COR. W. 13, 18, 24, 19  
44

GLO 1936

FOUND REMAINS of ORIGINAL

TAM. 6" N40 $\frac{1}{2}$ °E 15.89'

Fallen TAM. 10" S51 $\frac{1}{2}$ °E 16.50'

CEDAR 12" S89°W 16.50'

NEW TREES

CEDAR 12" N41°E 22.44'

CEDAR 6" S60°E 38.28'

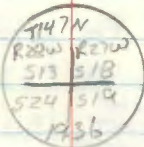
CEDAR 8" S25 $\frac{1}{2}$ °W 19.80'

CEDAR 12" N29 $\frac{1}{2}$ °W 22.44'

SET A 6" CONCRETE

CYLINDRICAL MONUMENT

24" LONG 20" IN GROUND





45 R-3

1/4 COR bet. SEC. 19, 30

GLO SET wood Post  
in MARSH - No TREES  
Pidgeon DAM will flood  
AREA



CORNER TO SECTIONS 19-20-29-30

ORIG. GOV'T. SURVEY 1874

SET WOOD POST

CEDAR 8 N36W 75 LKS. = 49.50'

CEDAR 6 N25E 118 LKS. = 77.88'

CEDAR 12 S64E 80 LKS. = 52.80'

NOTES OF GLO RESURVEY 1936

SET 6" X 24" CONCRETE CYLINDER WITH CAP MKD.

T147NR27W

519 | 520

530 | 529

FROM WHICH

1936

CEDAR 6 N40E 69 LKS. = 45.54'

CEDAR 5 S60<sup>3</sup>/<sub>4</sub>W 25 LKS. = 16.50'POPLAR 14 S5<sup>1</sup>/<sub>2</sub>E 13 LKS. = 8.58'CEDAR 7 N30<sup>1</sup>/<sub>4</sub>W 46 LKS. = 30.36'

874 By W. HABERLE 2-17-40

FD. MONJ. IN PLACE - FSLP'S ON BT'S. IN SEC'S. 29+30

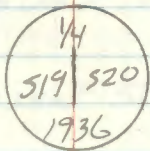


47 P-5

1/4 SEC COR SEC 19, 20

1936 GLO Record Dist.

set AN Iron Post 3' long 1" diam.  
28" in the ground



No trees Avail.  
Set Cedar Post 4" square 5' long 2'  
in the ground.



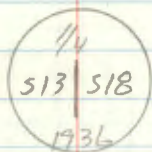
48 L-1

1/4 SEC. COR. bet 18, 13

1936 GLO

PREP. dist. SETAN IRON post

3' long 2" diam. 27" in ground



From which

cedar 5" N56°E 9.90'

cedar 7" S84 1/2°W 41.58'



L-5  
99 1/4 Sec Cor Bet. Sec 17, 18

A36 GLO SET COR PREP.

set 3' long by 1" Iron  
Post 28" in ground

1/4  
SEC 517  
1936

from which

W. OAK 6" N62 $\frac{1}{4}$ °E 31.02'

W. OAK 4" N27°W 7.26"



50 J-5

SEC COR 7, 8, 17, 18

1936 GLO

REMAINS OF ORIGINAL SURVEY

Post IN PLACE

NORWAY 26" S51°W 346.50'

Stump hole N50°E 1.98'

LOCAL TREES

Elm <sup>12"</sup>~~10"~~ S70°E 9.24'

Elm 10" S51°W 7.26'

NEW TREES

Ash 5" N54½°E 12.54'

Ash 4" S30°E 29.04'

Ash 5" S12°W 26.40'

Ash 7" N74°W 10.56'

SET A CYLINDRICAL CONCRETE MONUMENT

24" long 6" diam. 20" IN GROUND

T1474	R2710
57	38
518	517



51

QUARTER CORNER BET. SEC'S. 22-23  
 ORIG. GOV'T SURVEY 1874  
 SET WOOD POST

N. PINE 20 SBBW 50 LKS. = 33.0'

N. PINE 10 NBSE 60 LKS. 39.60'

NOTES OF GLO RESURVEY 1936

SET 1" X 36" IRON POST WITH BRASS CAP MARKED  
 RESTORED FROM ORIG. BT'S.

10-5-94 RM-CK

FD. IRON & CAP - IN PLACE

8' ABOVE GROUND

REMAINS OF ORIG. BT'S.

LARGE PINE STUMP HOLE N36E 25 LKS. = 16.5'

WITH SCRIBE VISIBLE  $\frac{1}{4}$  S BT  
 DEAD N. PINE 18 S56 $\frac{1}{2}$ E 40 LKS. = 26.40'

NOW ROTTED STUMP LEVEL WITH GROUND S56E - 26.40'

MARKED NEW BT'S. BY GLO

J. PINE 5 S74 $\frac{1}{2}$ E 16 LKS. 10.56'

NOW J. PINE STUMP S74E - 10.56' SCRIBE VISIBLE

N. PINE 16 N30 $\frac{1}{2}$ W 85 LKS. = 56.10'

NOW 24 N. PINE N30W - 56.10' SCAR TO COR.

51

MARKED NEW BT'S. 10-5-94 RM-CK  
 N. PINE 9 S74E - 25.31' MKD  $\frac{1}{4}$  S23 BT  
 N. PINE 17 S20W - 18.78' "  $\frac{1}{4}$  S22 BT  
 8' STEEL SIGN POST NORTH

PLACE FSLP ON 20 N. PINE ON NORTH SIDE OF  
 FR 3241 CORNER IS NORTH OF TAG - 280'  
 CORNER IN THICK BRUSH - WITH N. PINE S-W-N  
 AND BIRCH AND SCATTERED HARDWOODS N-E



52 J-1

SEC. COR SEC. 7, 18, 12, 13

1936 GLO END REMAINS OF  
ORIGINAL SURVEY

N. PINE	30"	S53 $\frac{1}{2}$ E	135.96'
cedar stp.	10"	N2°E	139.26'
PINE stp.		S82 $\frac{1}{4}$ E	126.88'

7747N  
R28W R22W  
S12 57  
E13 518  
1936

SET A CYLINDRICAL CONCRETE  
MONUMENT 6" X 24" - 2"  
IN GROUND

NEW TREES

TAM.	12"	N82 $\frac{3}{4}$ E	149.82'
TAM.	10"	S82°E	115.50'
POPULAR	12"	N55°W	17.16'

132  
44  
176.88

66  
49  
115



53

G-1

1/4 SEC COR. SEC. 7, 12

1936 GLO END REMAINS OF  
ORIGINAL SURVEY

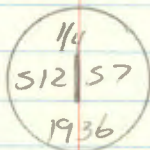
N. PINE ST 30" N 50° E 52.14

N. PINE ST N 80° W 96.36

NEW TREES

N. PINE 8" N 17° E 15.84'

J. PINE 10" S 60° W 17.16'



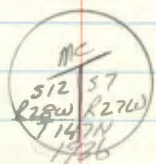


54 E, F-1

MC SEC 7, 12

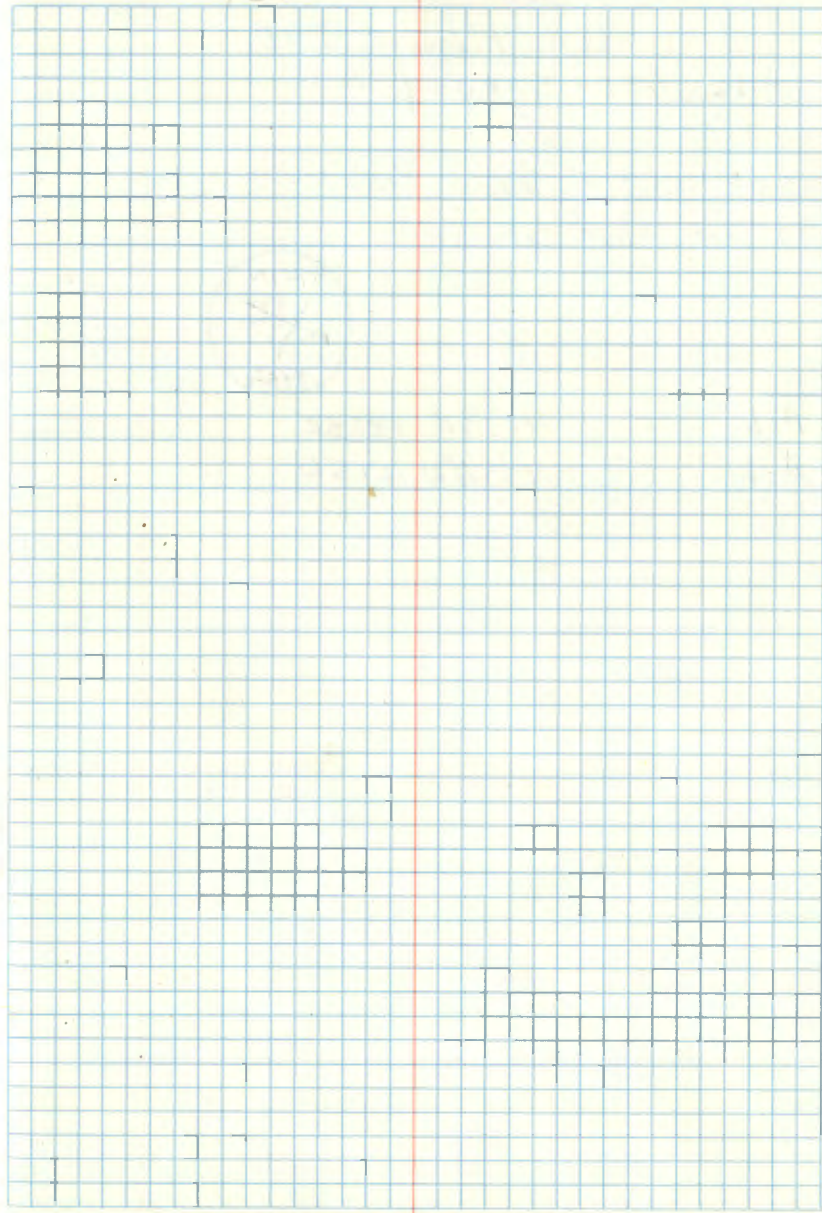
~~SEC. COR SEC 7, 12, 1, 6~~

1936 GLO SET 1" X 36" IRON  
Post



Ash 6" S35 1/2° E 58.74'  
Ash 10" S26° W 122.76'

66  
36.76  
122.76

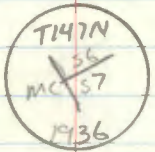




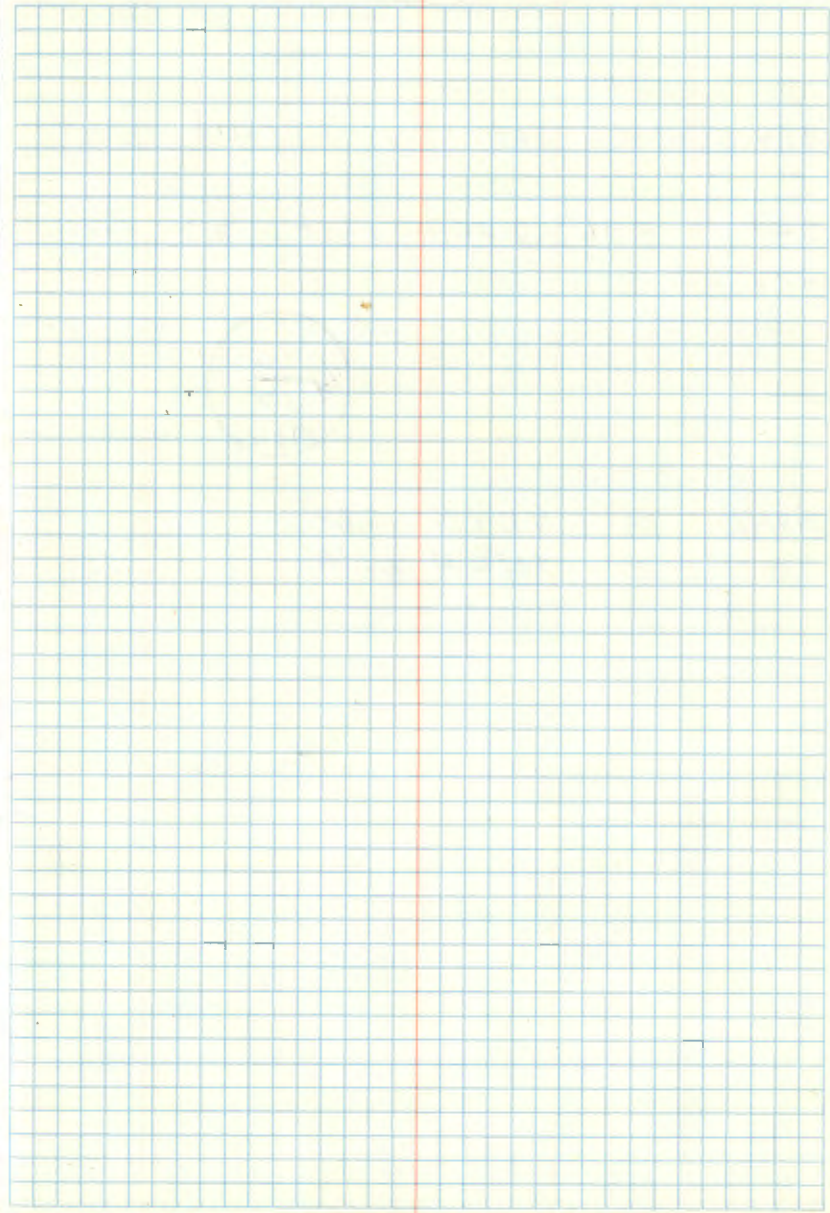
55 E-2,3

MC SEC 6,7  
EAST SHORE PIGEON LAKE  
1936 GLO SURVEY

Set 3'X1" Iron Post  
27" in the ground



Ash 6" N63 1/2 E 80.52'  
Ash 5" N53 1/2 W 109.56'





56 E-3

1/4 SEC. COR. Bet. 6, 7

1936 GLO SET BY RECORD DIST

SET 1" X 36" IRON POST 27" IN  
GROUND

56  
57  
1936

MAPLE 8" N 33 1/2° E 15.84'

BIRCH 7" S 25 1/4° W 25.08'



57 E-5

SEC. COR SEC. 5, 6, 7, 8

1874 ORG. BT.

~~By J. Stephens~~

~~RESURVEY~~ ~~RESURVEY~~

W. PINE 24" S28°E 17.25'

N. PINE 24" S55°W 10.15' 6.60'

Fallow  
T.M. N 80°W 5.94'

1936 GLO RESURVEY

SET A CYLINDRICAL CONCRETE

MONUMENT 6" X 24" - 20" IN

THE GROUND

NEW TREES

BALSAM 10" N74°E 7.92'

CEDAR 8" S76°E 64.68'

CEDAR 5" S32°W 60.72'

W. OAK 8" N23½°W 31.68'

X71974 R2700  
56/65  
57/58  
1936

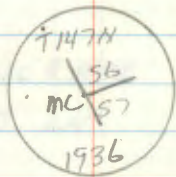


58 E-3, 4 B

MC SEC. 6, 7 EAST SHORE  
MALLARD BAY

1936 GLO RESURVEY

SET AN IRON POST 3' LONG 1" DIAM.  
27" IN GROUND



From which

Ash 6" N23 $\frac{1}{4}$ °E 56.10'

Ash 5" N71 $\frac{1}{4}$ °E 91.08'



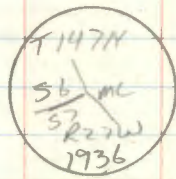
59 E-3,4A

MC SEC 6,7

WEST SHORE MALLARD BAY

1936 GLO RESURVEY

Set AN Iron Post 3' Long 1" diam.  
27" inground.



From which

Ash 6" S76°E 15.84'

Ash 8" S79½°W 11.22'



60 C-13

QUARTER CORNER SEC 3-4

1873 P.H. CONGER

ORIG GOVT SURVEY

SET WOOD POST

J. PINE 7" N70E 80

J. PINE 5" S1/2E 203

1936 G.L.O. RESURVEY

SET A 1" X 3' IRON PIPE 28" IN THE

GROUND/W/ BRASS CAP STAMPED: 1/4

54/53

1936

R. PINE 10" N34.0BE 233 lks 153.78'  
Now 20"

R. PINE 8" N25 3/4 W 230 lks 151.80'  
Now 18"

1989 R. MAEN - L. KRAUSE - G. BRAMA

Fd #20 IRON UP 5" IN GOOD CONDITION.

Fd BOTH GLO BTs. THE N.E. BT WAS  
VISIBLE. THE SW BT IS GROWN SHUT.

WITNESSED BY:

R. PINE 6" N16°W 21.72 1/4 54 BT NAE

R PINE 6" S83E 5.63 1/4 53 BT West

R PINE 6" S45W 9.96 1/4 54 BT NAE

CORNER IS ± 150' EAST OF HWY #46 & ± 130'  
SOUTH OF FR 3869 A.



61 E-11

QUARTER CORNER SEC 4-9

1873 P.H. CONGER

ORIG GOVT SURVEY

SET WOOD POST

J PINE 8" N85E 240 158.40'

J PINE 8" S86E 250 165.00'

1936 GLO RESURVEY

SET A 1" X 3' IRON PIPE 28" IN THE GROUND

W/ BRASS CAP STAMPED  $\frac{54}{39}$   
1936

FD TWO ORIG BT'S ONE DEAD.

NEW BT'S

R.PINE 10" S5½E 171KS 11.22'

R.PINE 5" N71W 291KS 19.14

R. MAIN-C. KRAUSE - G. BRAMA

FD THE GLO MONUMENT ABOVE GROUND 6" AND  
IN GOOD CONDITION. R PINE TO THE SE NOW A  
10" STUMP W/ SCRIBE VISIBLE. THE N-W BT  
IS A HOLE NO EVIDENCE.

WITNESSED BY.

R PINE 5" S24°E 35.82 "1/4 59 BT" NAIL

R PINE 8" S52 W 26.80 "1/4 59 BT" NAIL

R PINE 7" N68°E 18.30 "1/4 54 BT" NAIL

SIGN POST 3.22' ~~WEST~~ EAST

TWO RED TOPPED CEDAR POSTS ARE NEXT TO CORNER.



62 E-13

SECTION CORNER 3-4-9-10

1873 PH CONGER

ORIG GOVT SURVEY

SOT WOOD POST

J. PINE	8"	S89½E	27	17.82'	No EVIDENCE No EVIDENCE
J. PINE	8"	N31E	52	34.32	No EVIDENCE
J. PINE	6"	N53W	74	48.84	No EVIDENCE
PINE STUB	8"	S40W	40	26.40	No EVIDENCE

1936 GLO RESURVEY

SET A CONCRETE MONUMENT 24" X 6" DIAMETER

20" IN THE GROUND W/ 3" BRASS CAP

STAMPED: T147N R27W

54	53
59	510

1936

Fd TWO ORIG BT'S

MKD FOUR NEW BT'S

J PINE	10"	S27E	38	KS	25.08	ST. P. NO CLIP-BIT EVIDENCE
J PINE	10"	S30W	38	KS	25.08	TOST BT VISIBLE STAMP
J PINE	12"	N64½W	30	KS	19.80	
J PINE	12"	S80W	14	KS	9.24	W/ METAL TAG Fd STUMP

GLO DETERMINED THREE CORNER POSITION BY THE INTERSE-  
CTION OF N-S & E-W BLAZED LINES. NOT ORIGINAL BEARING  
AND DISTANCE. REFER TO GLO NOTES. Pg 52

1989-R. MAIN CLAUSE G. DRAMA

Fd GLO MONUMENT IN PLACE 2" ABOVE GROUND IN  
GOOD CONDITION

WITNESSED BY.

R PINE	9"	N65E	7.70	"53 BT" N/E
R PINE	11"	S10E	16.69	"510 BT" N/E
R PINE	12"	S41W	46.49	"59 BT" N/E
R PINE	12	N20W	20.05	"54 BT" N/E
J PINE STAG	12"	N67E	12.3'	(ORIG BT) SCRIPER VISIBLE
S&N POST SOUTH 3.75 FT				



## EAST 1/16 SECTION 4-33

8/14/89 R. MAINE C. KRAUSE

Fd A SQUARED POST W/ SCRIBE VISIBLE LYING  
DOWN AND ROTTED AT GROUND LEVEL. RESET A  
3" SQUARED CROWN POST @ THIS LOCATION. Fd A  
12" CEDAR WITH TWO LOCATION POSTERS  
ATTACHED. ONE RUSTED AND NOT READABLE.  
THE OTHER FROM 4/18/61 BY BG. WPA. WE  
PLACED A LOCATION POSTER ON SAME FROM  
WHICH POST BEARS S50 W 4 FT.



64 N-9

## SECTION CORNER SECTION 16-17-20-21

1873 ORIG GOVT SURVEY

SET Wood POST

R. PINE	18	S41 $\frac{1}{2}$ E	52 lks	34.32
R. PINE	18	S54W	70 lks	46.20
R. PINE	12	N48E	40 lks	26.40
R. PINE	14	N54W	42 lks	27.72

1927 GLO RESURVEY

SET A CONCRETE MONUMENT 6" x 26" 22 INCHES  
IN THE GROUND. ESTABLISHED 4 NEW BEARING  
TREES. GLO FD THE ORIG BTS ALL DEAD.

W PINE	8"	N20 $\frac{1}{2}$ SE	75 $\frac{1}{2}$ lks	49.50
R PINE	6"	S62 $\frac{1}{2}$ 30"E	226 lks	149.16 IN RD CLEARING
R PINE	10"	S25 30"W	185 lks	122.10
R PINE	5"	N75 $\frac{1}{2}$ 30W	103 lks	67.98

1989 R. MAZEN - C. KRANSE - G. BRAMA

FD GLO MONUMENT IN GOOD CONDITION  $\pm$  25'  
SOUTH OF  $\frac{1}{4}$  FR 2198 . 4x4" 6" NE OF  
CORNER.

WITNESSED BY

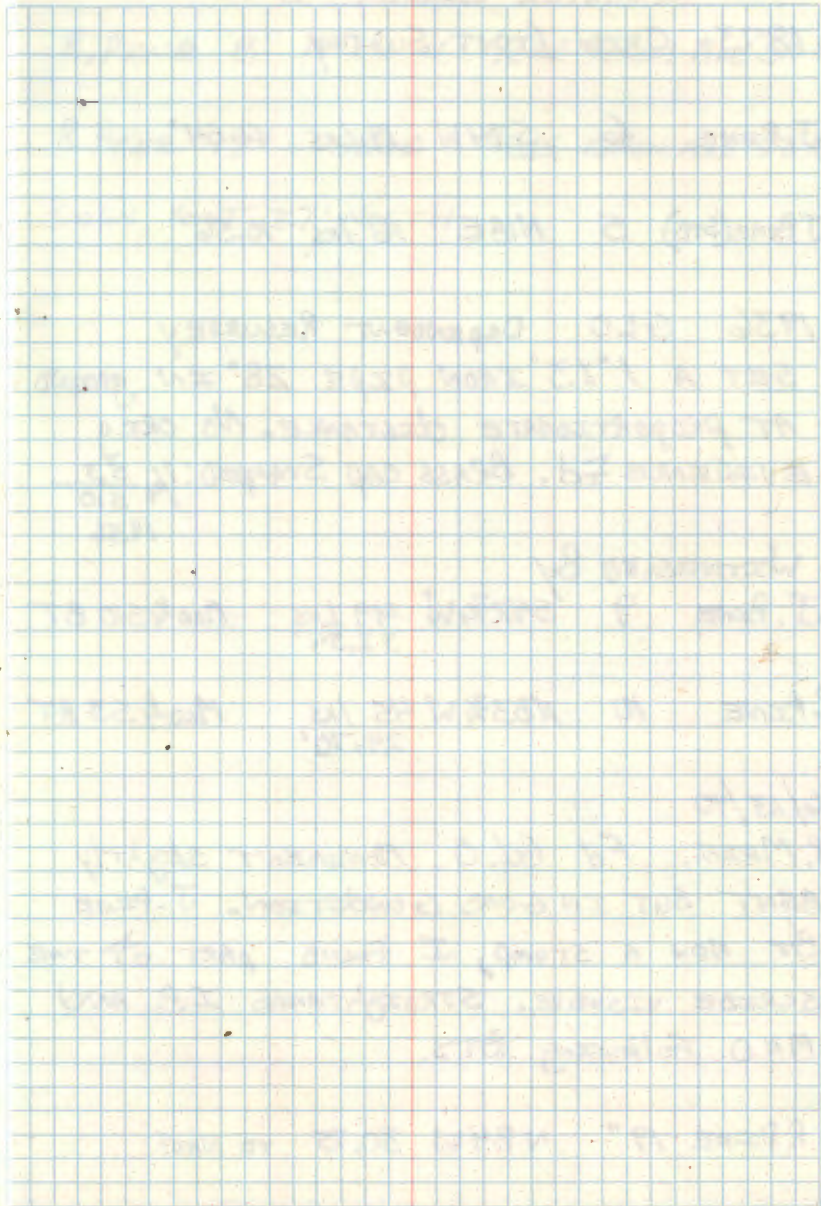
GLO. R PINE	19"	S25 W	122.10	NATL
GLO. R PINE	13"	N75W	67.98	NATL
GLO W PINE	25"	N21E	49.62	NATL
NEW R. PINE	13"	S80E	45.60	"521 BT" NATL



65

EAST  $\frac{1}{16}$  SECTION 4-33

22





## QUARTER CORNER 3-10

1873 ORIG GOVT SURVEY

J. PINE 6 S74W 19 LKS 12.54'

J PINE (STB) 5 N18E 16 LKS 10.56'

## 1936 GLO DEPENDENT RESURVEY

SET A 1" X 3" IRON PIPE 28" IN GROUND  
 AT PROPORTIONATE DISTANCE. NO ORIG  
 EVIDENCE FD. BRASS CAP STAMPED:  $\frac{1}{4}$   $\frac{53}{310}$   
 1936

WITNESSED BY

J. PINE 9 S42 $\frac{3}{4}$ W 49 LKS MKD 4510 BT  
32.34'R. PINE 10 N83 $\frac{3}{4}$ W 45 LKS MKD 453 BT  
29.70'

6/13/90

R. MAIN. FD GLO. MONUMENT SLIGHTLY  
 BENT BUT IN GOOD CONDITION. J. PINE  
 BT NOW A STAMP, I FOUND PART OF THE  
 SCRIBE VISIBLE. STRAIGHTENED I.P. AND  
 MKD FOLLOWING BTS.

GLO R PINE 19" N84W 30.75 TO NAIL

R. PINE 8" N 26 W 12.02 TO NAIL MKD "510 BT"

R PINE 17" S50E 48.15 TO NAIL MKD "53 BT"

SEGN POST 3.7' NORTH



## Z-21 SECTION CORNER 1-2-35-36

JAN-FEB 1874 P.H. CONGER ORIG GOVT SURVEY  
SET WOOD POST AND WITNESSED

J. PINE 12 N50W 7/ks 4.62'  
20" R PINE STA NOW AT THIS LOCATION.

J. PINE 10 S29E 27/ks 17.82'  
Fd FALLEN DOWN. SCRIBE ROTTED AWAY. WINDOW @ LOWER BLAZE

J PINE 7 N69 1/2 E 40/ks 26.40'  
NO EVIDENCE

J PINE 8 S43W 32/ks 21.12' BT VISIBLE 1991  
10" STP @ Benzeng 1/2 DISTANCE

Aug-Sept 1927 Hal. D. CRAIG  
DEPENDENT RESURVEY.

FOUND ORIGINAL EVIDENCE AND SET A 3" IRON  
PIPE FILLED WITH CONCRETE UP 8" WITH BRASS  
CAP STAMPED

T147N R27W  
S35 | S36  
S2 | S1  
T146N  
1927

WITNESSED BY:

J PINE	10' (DOWN)	N65E	38 ks	25.08ft	SCRIBE VISIBLE
J PINE	14" 6" STUB	S30°30'E	26 ks	17.16ft	SCRIBE VISIBLE
J PINE	12" 6" STUB	S45°15'W	38 ks	25.08ft	SCRIBE VISIBLE
J PINE	18"	N44°15'W	7 ks	4.62	SCRIBE VISIBLE
NEW J. PINE	10"	N53 1/2 E	39 ks	25.74	

SEPT 10 1958 SAM. BENZING

PLAT OF SURVEY PARTS OF SECTIONS 2-3-10 T146 R27  
AND SECTION 35 T147 R27. FOUND HAL. D. CRAIG'S  
CORNER AND WITNESSED.

R PINE (OLD) 10" N45°45E 25.4 ROTTED STP NO SCRIBE

J. PINE NEW 6" S2SE 11.7 S15°E 6" STP W/FLAT  
BLAZE.

J. PINE NEW 6" S54W 17.8

J. PINE NEW 6" N43 1/2 W 43.95 N38W 6" STP ROTTED

R. PINE NEW 7" N47E 19.35

11/15/91 R MAIN

Fd CORNER IN PLACE UP 6" AND WITNESSED BY.

(OLD BTS)

J PINE 9" S60W 17.94 TO #16 N/A / SCRIBE  
VISIBLE

R PINE 18" N54 E 19.75 TO SPK BLAZE.

(NEW BTS)  
R PINE 13" N65 W 49.57 TO SPK MKD S35 BT

R PINE 16" S12 E 19.60 TO SPK MKD S1 BT

SEGN POST NORTH 3.4 FT TO FACE OF POST

BT BEARINGS ARE TRUE DOUBLE BLAZED PRINTED RED.



QUARTER CORNER BET. SEC'S, 2+3

NOTES OF ORIG. GOV'T. SURVEY 1874

SET WOOD POST

J. PINE 6 S74W 19 LKS. = 12.54'

STUB 5 N11E 90 LKS. = 59.40'

NOTES OF GLO RESURVEY 1936

PROPORTIONAL DISTANCE - N8°57'W - 48.73 CHS. OR

3216.18' FROM SEL. COR. TO SOUTH

SET 1" X 3/8" IRON POST WITH BRASS CAP MEAS.

8-10-94 CK

FD. GLO IRON W/ CAP - LYING BY

NE BT - BENT - BUT FLANGES

ARE IN PLACE

FROM WHICH

1936

J. PINE 6 N55 1/4 E 27 LKS. = 17.82'

NO TRACE - PART OF ROAD CLEARING YEARS AGO

N. PINE 5 N67W 55 LKS. = 36.30'

NOW 17" N. PINE AT N67W - 36.3' PLUNGE CUT AND FOUND

ALL SCRIBE INSIDE

IF STRAIGHTEN 1" IRON AND SET FROM N. PINE  
BT AT N67W - 36.3'  
CAP IS 3" BELOW ROAD SURFACE FR# 3807  
CORNER IS IN CENTER OF ROAD

MARKED NEW BTE.

N. PINE 13 S74W - 39.53' MKD 1/4 S3 BT

N. PINE 13 N34W - 33.76' MKD 1/4 S3 BT

N. PINE 15 NORTH - 28.15' MKD 1/4 S2 BT

8" STEEL SIGN POST DUE WEST 12.9' W/54-9



CORNERS TO SECTIONS 2-3-10+11  
 NOTES OF ORIG. GOVT. SURVEY 1874  
 SET WOOD POST

- N. PINE 16 S65E 61 LKS. = 40.26'  
 1936 FD. N. PINE STP. 82°-36" <sup>SCRIBED</sup> HIGH AT S70 1/2° E 61 LKS.  
 N. PINE 14 N61E 64 LKS. = 42.24'  
 1936 FD. BURNED PINE STP. AT N61E 59 LKS. = 38.94'  
 N. PINE 18 S19W 60 LKS. = 39.60'  
 1936 FD. LIVE N. PINE 26" S14W - 60 LKS. <sup>SCRIBE SHOWING</sup>  
 J. PINE 8 N49W 70 LKS. = 46.20'  
 NO TRACE AT N49W - 46.2'

NOTES OF GLO RESURVEY 1936

FROM REMAINS OF 3 ORIG. BT'S.

SET 6" X 24" CONCRETE CYLINDER 4" ABOVE  
 GROUND WITH BRASS CAP MKD.

8-11-94 CK T147N R27W

FD. CONCRETE MONUMENT

11/16 PLACE - 3" ABOVE GROUND

FROM WHICH

N. PINE 26 N41E 228 LKS. = 150.48'

NOW ROTTED N. PINE STP. AT N41E - 150.5'

J. PINE 8 S50E 42 LKS. = 27.72'

NOW ROTTED STUMP AT S50E 27.7'

N. PINE 26 N59 1/4 W 66 LKS. = 43.56'

NOW DIRT PILE WITH WOOD ON UNDER SIDE

PROBABLY WINDFALL - TOP LOGGED YEARS AGO

CORNER 15 IN N. PINE STAND WITH HEAVY BRUSH  
 EVIDENCE OF ORIG. BT'S. REMAINING

LARGE PINE STUB 20' HIGH AT S14W - 39.6'  
 MOST SCRIBE STILL VISIBLE - BURNED ALSO

PINE STUB 36" HIGH SOME SCRIBE VISIBLE  
 S70E - 40.26'

BURNED PINE STUMP 24" HIGH - NO SCRIBE  
 N61E - 38.94'

MARKED NEW BT'S.

N. PINE 10 N36E - 25.08' MWD S2 BT

N. PINE 13 S54E - 23.65' " S1 BT

N. PINE 15 S20W - 25.62' " S10 BT

N. PINE 10 N41W - 23.73' " S3 BT

4" X 4" X 5" HIGH 1.0 WEST OF MONUMENT

PLACED FSLP ON 20" N. PINE ON EAST SIDE OF FR-3807

SEC. COR. IS S83W - 575'

53 | 52

510 | 511



CONTINUED INFORMATION  
FROM PAGE 1 THIS BOOK

SECTION CORNER 7-12-13-18

ORIG. GOVT. SURVEY 1874

SET WOOD POST

N. PINE 18 N43W 32 LKS. = 21.12'  
GLO Fd. 36 N. PINE N57W-21.12' - REMARKED w/BTN. PINE 18 N60E 114 LKS. = 75.24'  
GLO Fd. 36 N. PINE N60E-75.24' REMARKED w/BT

J. PINE 8 S73W 80 LKS. = 52.80'

J. PINE 6 S39E 78 LKS. = 51.48'

GLO Fd. 4' HIGH J. PINE STUB - S35E - 51.48'

GLO RESURVEY 1936

FROM EVIDENCE OF 3 ORIG. BT'S. SET

6" X 24" CONCRETE CYLINDER WITH CAP MKD

8/22/94 CK

T147N

Fd. CONCRETE MONUMENT R27W R26W

IN PLACE - 3" ABOVE GROUND

40' EAST OF FR #2052 NE-SW

512	57
513	518
1936	

MKD NEW BT'S.

J. PINE 10 S82E 27 LKS. = 17.82'

8/22/94 NOW WELL ROTTED STUMP NEARLY LEVEL - S82E - 17.8'

W. PINE 14 S24W 54 LKS. = 35.64'

8/22/94 NOW 27" W. PINE AT S24W - 35.64' SCRIBE OVERGROWN

LAT = 47°33'24.18718N. REAL TIME CORRECTED

LONG = 94°02'07.21866W

ORIG. BT'S. STILL IN EVIDENCE  
N. PINE STR. (LARGE) N60E - 75.24' BT BLAZE + SCRIBE <sup>VISIBLE</sup>N. PINE STR. (LARGE) N57W - 21.12' BT BLAZE + SCRIBE <sup>VISIBLE</sup>

J. PINE STR WELL ROTTED S39E - 51.5'

SCHOONOVER'S BT FROM 11-26-79

HE MARKED N. PINE 15 N68E - 12.10'

8/22/94 NOW 18.5" N. PINE N68E 12.10' SCRIBE VISIBLE

MARKED NEW BT'S

N. PINE 19 N22W - 87.25' - MKD 512 BT

N. PINE 21 N69W - 78.33' - " 512 BT

8' STEEL SIGN POSTS SOUTH 4.0' + EAST 3.3'

AREA AROUND CORNER HAS RECENTLY BEEN LOGGED  
MUCH OF THE SLASH HAS BEEN PUSHED OVER MONU-  
MENT - SIGN POST WAY LYING FLAT ON GROUND  
ORIG. BT AT NW WAS JUST CUT - NO REASON FOR  
LOGGER TO COME THIS CLOSE TO CORNER



## SECTION CORNER 10-11-14-15

JAN-FEB 1874 ORIG GOVT SURVEY P.H. LONGER

SET WOOD POST FROM WHICH

R PINE 14 S19W 241KS 15.84 FT  
 R PINE STUB 4 FT HIGH. SCRIBES NO LONGER VISIBLE. AXE MARKS ON STUMP.

R PINE 4 N58W 211KS 13.86 FT  
 R PINE STUB 2 FT HIGH N65°W 13.86 FT NO SCRIBE VISIBLE  
 AXE MARKS ON STUMP.

R PINE 14 S22½ E 251KS 16.05 FT

R PINE 18 N60°E 301KS 19.80 FT  
 R PINE STUB 1 FT HIGH LOWER BLAZE VISIBLE. NO SCRIBE VISIBLE.

1936 GLO DEPENDENT RESURVEY H.H.D. GERRY Pg 43

SET 24" X 6" CONCRETE MONUMENT WITH 3/2 BRASS CAP 20" DIA

THE FOUND FROM ORIGINAL BT REMAINS. Fd TURNED ORIGINAL STUMP 20" DIAMETER N53½ E 301KS (19.8 FT) MARKED W/ ORIG BT. Fd 18" ORIG STUB 6 FT HIGH S9°W 241KS (15.84 FT) BLAZES AND UPPER SCRIBE VISIBLE. Fd 24" ORIG STUMP N65°W 211KS (13.86 FT) BASE OF LOWER BLAZE SHOWS PLAINLY.

R. PINE 8" N18½ E 751KS 49.5 FT

R. PINE 6" S44½ E 351KS 23.10 FT

R. PINE 6" S39½ W 531KS 34.98 FT NEW A ROTTED STUMP

R. PINE 8" N62¾°W 681KS 46.83

8/30/94 C. KRAWSE R. MACN

Fd GLO MONUMENT IN PLACE UP 3". PLACED FSLP ON 13" R. PINE ON EAST EDGE FR 3801 FROM WHICH CORNER BEARS EAST 16.5 FT. NOTE THAT ROADS MENTIONED IN GLO NOTES NEAREST THE CORNER ARE NOW OVERGROWN AND HARD TO SEE.

MONUMENT WITNESSED WITH:

GLO R PINE 16" N18E 49.5 FT TO SPK SCRIBE OVERGROWN

GLO R PINE 14½" S44½E

GLO R PINE 17" N63°W 44.88 FT TO SPK SCRIBE OVERGROWN

NEW R PINE 13" S50°W 32.23 FT TO SPK MKC: S15 BT

8 FT STEEL SIGN POST 30.2 FT EAST



QUARTER CORNER BET. SEC'S. 10-15

ORIG. GOV'T SURVEY 1874

SET WOOD POST

N. PINE 14 N28W 75 LKS. 49.50'

N. PINE 14 S34E 102 LKS. 67.32'

NOTES OF GLO RESURVEY 1936

SET 1" X 36" IRON POST WITH BRASS CAP MARKED

8-30-94 RM + CK

Ed. GLO IRON + CAP - IN PLACE

$\frac{1}{4}$   $\frac{S10}{S15}$

6" ABOVE GROUND

1936

FROM WHICH

N. PINE 12 S45 $\frac{1}{4}$ E 28 LKS. 18.48'

NOW 20" N. PINE AT S45E - 18.48' SCAR - OVERGROWN

N. PINE 14 N4W 3 LKS. 1.98'

NOW 20" N. PINE AT N4W - 2.0' SCRIBE VISIBLE

NEW R. PINE 16" N74°E 150.38 FT TO Spk MED 2.510 BT

8 FT STEEL SIGN POST 1.65 FT WEST

CORNER IS 45 FT N38°W OF FOREST ROAD 3802 AND

WOODS ROAD NORTH. PLACED SPKS IN GLO RTS

AT GLO DISTANCES



SECTION CORNER 9-10-1546

JAN FEB 1874 ORIG GOVT SURVEY P.H. CONGER

SET POST FROM WHICH

R PINE 20" N45W 2551KS 168.3FT

STUB 10" S4W 231KS 15.18FT

J PINE 5" S80E 521KS 34.32FT

JUN-OCT 1936 GLO DEPENDENT RESURVEY Pg 50

SET A 6" X 24" CONCRETE MONUMENT 20" IN GROUND

WITH 3/8" BRASS CAP DETERMINED FROM ORIGINAL B.T.S.



SECTION CORNER 22-23-26-27  
 ORIG. GOVT. SURVEY 1874  
 SET WOOD POST

N. PINE 20 S72½W 45 LKS. = 29.70'  
 N. PINE 18 N65½E 70 LKS. = 46.20'  
 N. PINE 20 N28W 69 LKS. = 45.54  
 J. PINE 12 S27E 62 LKS. = 40.92'

NOTES OF GLO RESURVEY 1927

FD. 3" SQUARD PINE STAKE - SCRIBED

IN PLACE OF STAKE - SET 2" DIA. X 36" LONG IRON  
 POST WITH BRASS CAP MARKED T147NR27W

9-6-94 RMOCK

S22|S23

FD. 2" IRON CAP - IN PLACE - 8" HIGH

S27|S26

1927

FROM WHICH

REMAINS OF ORIG. N. PINE 40 S56W - 65 LKS. = 42.90'

" " " N. PINE STP. 36 N36°45'W - 74 LKS. = 48.84'

NEW BT'S. 1936

BIRCH 10 N23E 23 LKS. = 15.18'  
 NOW 13 BIRCH AT N23E - 15.18' BOTH SCARS VISIBLE  
 N. PINE 16 S53°30'E 93 LKS. = 61.38'  
 NOW 23" N. PINE AT S53E - 61.38' BOTH SCARS VISIBLE

1936

2 LIVE PINE TREES 18" MARKED WITH ORIG. LINE  
 BLAZES WHICH BEAR 50°30'E 65 LKS. = 42.90' AND  
 ANOTHER 245 LKS. = 161.7'

CORNER IS IN VERY THICK BRUSH WITH SCATTERED  
 PINE + BIRCH  
 6" PINE POST 4" SQD. TOP STANDS NEXT TO IRON  
 SCRIBED WITH SECTIONS - 36" HIGH  
 CORNER IS 75' EAST OF FR 2230  
 NEW SW BT IS JUST WEST OF ROAD

MARKED NEW BT'S.

N. PINE 10 N64W - 36.36 MKD S22 BT  
 N. PINE 12 S47W - 110.80' MKD S27 BT  
 8" STEEL SIGN POST DUE EAST 3.60'

ORIG. PINE BT

NOW LARGE PINE STUMP - DECAYING AT S56W  
 42.90' MOSS COVERED - CUT IN LAST 20 YEARS

NOW LARGE PINE STUMP - DECAYING AT N37W  
 48.8' MOSS COVERED - COULD POSSIBLY BE 40"  
 PINE RATHER THAN SW BT

BOTH OLD LINE TREES HAVE BEEN CUT YEARS AGO



QUARTER CORNER BET. SEC'S. 15+22  
 ORIG. GOV'T. SURVEY 1874  
 SET WOOD POST

J. PINE 4 S87E 140 LKS. = 92.4'

N. PINE 12 N80E 150 LKS. = 99.0'

NOTES OF GLO RESURVEY 1936

PROPORTIONAL DISTANCE

SET 1" X 36" IRON POST WITH BRASS CAP MARKED

$\frac{1}{4}$   $\frac{515}{522}$   
 1936

FROM WHICH

J. PINE 5 N12 $\frac{1}{4}$ E 8 LKS. = 5.28'

J. PINE 6 S13 $\frac{3}{4}$ W 60 LKS. = 39.60'



QUARTER CORNER BET. SEC'S. 7 + 18

ORIG. GOV'T. SURVEY 1874

SET WOOD POST

J. PINE 6 N 2 E 23 LKS. = 15.18'

J. PINE 6 S 42 E 35 LKS. = 23.10'

NOTES OF GLO RESURVEY 1936

PROPORTIONAL DISTANCE

SET 1" x 36" IRON POST WITH BRASS CAP MARKED

9-7-94 CK

FD. IRON + CAP - IN PLACE

$$\frac{1}{4} \frac{57}{518}$$

2" ABOVE GROUND

FROM WHICH

1936

N. PINE 20 S 55 1/2 E 106 LKS. = 69.96'

NOW 27" N. PINE S 56 E - 69.96' SCAR FACING IRON.

N. PINE 24 N 80 1/2 W 73 LKS. = 48.18'

NOW 27" N. PINE N 80 W - 48.18 SCAR FACING IRON

MARKED NEW BT

N. PINE 24 S 11 W 66.30' MKD 1/4 518 BT

8' STEEL SIGN POST NORTH 3.15'

PLACE ROCK AT NORTH EDGE OF IRON

CORNER IS 35' NORTH OF FR 2171

BOTH SOUTH BT'S ARE JUST SOUTH OF ROAD



QUARTER CORNER BET. SEC. 20+29  
 NOTES OF ORIG. GOV'T. SURVEY 1874  
 SET WOOD POST

PINE STUB 21" S48W 204 LKS. = 134.64'

NOTES OF GLO RESURVEY 1927

FOUND CORNER TO BE MARKED BY N. PINE 5"  
 SQUARD - WHICH FALLS ON A BLAZED LINE  
 E & W OLD BLAZES STILL VISIBLE ALONG LINE  
 WITNESSED BY

N. PINE 14 N70°45'E 11 LKS. = 7.26'  
 SAME AS RECORDED BELOW <sup>AND OLD TAG</sup> - DOUBLE SCARS

SQUARD N. PINE WAS DONE MANY YEAR AGO  
 AND IS ACCEPTED AS TRUE CORNER

NOTES OF GLO RESURVEY 1936

FOUND SQUARD N. PINE AT CORNER - REMOVED  
 DEAD PINE AND SET 1" X 36" IRON POST WITH  
 BRASS CAP MARKED

$\frac{1}{4} \frac{S20}{S29}$

FROM WHICH

1936

N. PINE 14 N74E 9 LKS. = 5.94'

NOW 23" N. PINE N74E - 5.94' SCAR TO COR.

N. PINE 8 S44W 16 LKS. = 10.56'

NOW 17.5" N. PINE S44W - 10.56' SCAR TO COR.

9-27-94 CK  
 FD. IRON & CAP - IN PLACE - 6" ABOVE GROUND  
 CORNER IS IN PINE STAND WITH VERY THICK BRUSH  
 AND SCATTERED HARDWOODS

MARKED NEW BT.

N. PINE 9 N6W - 28.65' MKD.  $\frac{1}{4}$  S20 BT

RAN LINE N89W TO FR # 2379B - CENTER LINE OF  
 TRAIL WAS 328' SAME AS GLO TIE  
 FD. 20" N. PINE BLAZED E & W AT 281' WEST OF COR.  
 PUT FSLP ON 19" N. PINE ON WEST SIDE OF FR 2379B  
 CORNER IS S89E - 338' FROM TAG

NOTE: 23" N. PINE HAS DOUBLE SCARS - HIGHER SCAR  
 PROBABLY FROM 1927 SURVEY - AND LOWER SCAR  
 FROM 1936 SURVEY  
 OLD RUSTED TAG ON THIS PINE ALSO - COULDN'T READ



CORNER TO SECTIONS 21-22-27+28

ORIG. GOV'T. SURVEY 1874

SET WOOD POST

- 1 PINE 8 N37E 28 LKS.
- 4 PINE 6 N20W 4 LKS.
- 3 N. PINE 14 S23W 35 LKS.
- 2 N. PINE 24 S20E 76 LKS.

## NOTES OF GLO RESURVEY 1927.

FOUND 4" SQUARD POST - SCRIBED - AND EVIDENCE  
OF 4 ORIG. BT'S.

1. DEAD W. PINE 28 N35°15'E <sup>SOME SCRIBE VISIBLE</sup> - 37 LKS.

NOW WELL ROTTED PINE STUMP N35E 24.42'

2. DEAD N. PINE 28 S18°15'E <sup>FAINT SCRIBE VISIBLE</sup> 90 LKS.

3. NOW PINE STP IN PIECES ON SLOPE S18E 59.4'

3. FALLEN N. PINE 20 S33°30'W <sup>SCRIBE VISIBLE</sup> 42 LKS.

NOW PINE WINDFALL S33W - 27.72'

4. N. PINE 14 N18°45'W 58 LKS.

NOW 18 N. PINE N19W - 38.28' SCAR FACING COR.

1927

SET 2" X 3/8" IRON POST WITH BRASS CAP MARKED

10-6-94 RM-CK

T147N R27W

Fd. 2" IRON + CAP - IN PLACE  
8" ABOVE GROUND - ON SIDE SLOPE  
IN HEAVY BRUSH - HARDWOODS + PINE  
150' W OF WOODS TRAIL #3154

WG	S21	S22
MC	S28	S27

FROM WHICH

BIRCH 4 S60°15'E 11 LKS. =  
NOW 8 BIRCH S60E 7.26'

1927

NOTE: THE RECORD OF THE POSITION FOR THE ORIG. BT'S.  
IS EVIDENTLY ERRONEOUS. I ACCEPT THE STAKE, DESCRIBED  
AS THE BEST AVAILABLE EVIDENCE OF THE TRUE POINT  
FOR THE CORNER - ALL BLAZES ON BT'S. FACE STAKE

WE FOUND A W. PINE STUB 22" AT N18E - 34.4' FROM  
IRON - HAS OPEN SCAR WITH OLD (UNREADABLE) FSLP  
INSIDE - ON FLAT AREA + ALSO BASE SCAR WHICH  
COULD BE ANOTHER LOCAL BT-?

Fd. 3/8" W. PINE AT N78E APPROX. 60' - WHICH IS  
BLAZED E-W-N SIDES - THIS W. PINE IS VISIBLE  
FROM WALKING TRAIL ON RIDGE TOP FR 3154



QUARTER CORNER BET. SEC'S. 14 + 23  
 ORIG. GOV'T. SURVEY 1874  
 SET WOOD POST

N. PINE 12 N19W 13 LKS. = 8.58'

N. PINE 14 SIDE 40 LKS. = 26.40'

NOTES OF GLO RESURVEY 1936

PROPORTIONAL DISTANCE

SET 1" X 36" IRON POST WITH BRASS CAP MARKED

NO IRON COULD BE

LOCATED

$$\frac{1}{4} \frac{514}{523}$$

FROM WHICH

1936

J. PINE 6 S32<sup>3</sup>/<sub>4</sub>E 29 LKS. = 19.14'

FALLS IN ROAD CLEARING S33E 19.14'

N. PINE 24 N0°S'W 79 LKS. = 52.14'

NOW 27" N. PINE NORTH 52.14' SCRIBE INSIDE

PLACE TAG AND SPIKE ON EAST SIDE

N83°50'E - 39.73 CHS. = 2622.18'

10-18-94 RM+CK

FD. LIVE 27" N. PINE (GLO) AT NORTH 52.14"

PLUNG CUT SCAR AT BASE - FD. SCRIBE 1/4 S14 BT

INSIDE - PLACE 60° SPIKE IN CENTER OF PINE

AND MEASURE 52.14' SOUTH TO CENTER OF

COUNTY ROAD #33 - NO IRON COULD BE LOCATED

FROM PINE BT - SET 2" X 24" IRON PIPE WITH

BRASS CAP MARKED

T147N R27W

CAP IS 12" BELOW ROAD  
 SURFACE - PLACE MAGNETIC  
 PELLET 3.6' BELOW ROAD  
 UNDER 2" IRON PIPE

$$\frac{1}{4} \frac{514}{523}$$

1994  
 USFS

MARKED NEW BT'S.

N. PINE 17 S44E - 52.22' MKD 1/4 S23 BT

N. PINE 13 S18W - 44.90' " 1/4 S23 BT



1182  
6  
7092  
7092  
78012

CW 1/16 Sec 13 T147 R27  
F.S. location poster on  
10" R. Pine from which cor.  
bears West 14.0'

4/14/20  
JAM

4818  
66  
1192

55.42 12.54  
66 66  
121. 78.54

S9E  
579'  
RD 576E

4.12  
6  
2972  
2972  
27192