

CORNER
RESTORATION
T147N R26W



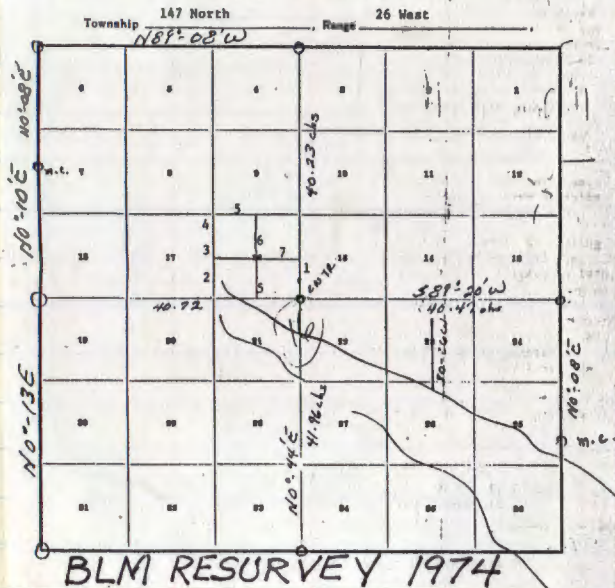
MINING
TRANSIT BOOK

No. 384 F

Book 1

CORNER RESTORATION T147N R26W

INDEX DIAGRAM

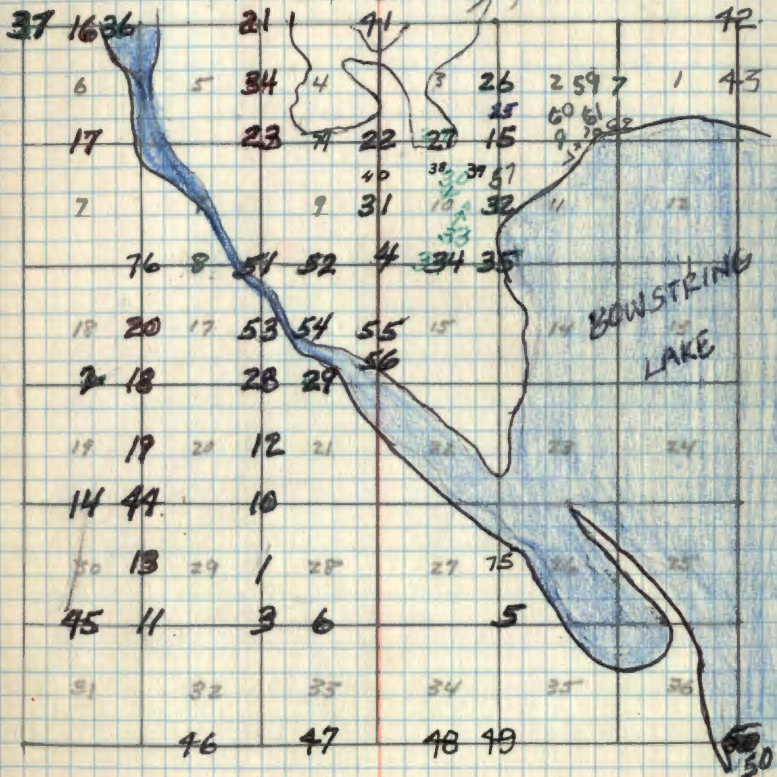


BOOK 1 of 2

FULL BOOK

T 147N R 26W

WISCON County, MINN



Numbers Near Corners Refer to page
in book on which notes to that corner
is found.

ORIG. SURVEY 1876 By B. C. BALDWIN
JUNE 8 THRU JUNE 16 1876

1 T-9

1/4 bet 28-29

T148N

29 28

R26W

evidence of one original Gov't
BT. 8" R. Pine now 20" with scribing
S-BT visible S28E 43 Lks. = 28.38'

NEW BTS. ESTABLISHED by J. LAUSCHE

SEC 29 10" J. PINE N68W 32.6 feet

SEC 28 6" J. PINE S62E 34.8 feet

SEC 28 8" J. PINE N14E 34.7 feet

all bearings - are true bear-
ings.

corner marked by 2" inside dia
pipe filled with concrete and
capped with 3" BRASS TABLET
MARKED.

T146N R26W

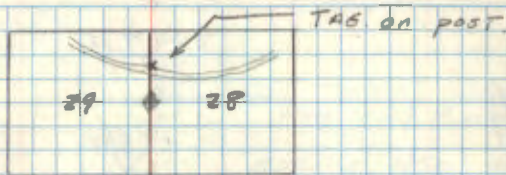
1/4 S28 S29

RLS 3628

DATE 11/5/58

T-9

Affidavit



approx 1190 ft. south to corner from
tag on post.

Metal location post is on
R. Pine original BT. from which
the corner bears N28W 28.38 feet.

1978 R. OLESEN 6-23-78 RPO

FD. IRON W/ CAP IN PLACE

3 J. PINE MARKED IN 1958 FD. DEAD

FD. ORIG. N. PINE STUMP S26E 28.4'

MARKED NEW BTS

N. PINE 13 SNE 78.06'

N. PINE 15 NSE 56.15'

8" STEEL SIGN POST EAST 3.5'

ORIG. GOV'T. SURVEY 1876

SET WOOD POST

N. PINE 8 S28E 43 Lks. = 28.38'

N. PINE 16 N21W 24 Lks. = 15.84'

2 N-3

1/4 bet 18-19

T147N

18

19

R 26W

evidence of orig ORIG Gov't RT.
10" Tam. (now 12" stump, partly
rotted with scribing T visible
S46W 1.80 chs. = 118.8 feet.

NEW B.Ts.

SEC 18 18" R. Pine N4E 38.2 feet

SEC 18 4" Spruce N39W 34.5 "

SEC 18 7" Cedar N83E 69.9 "

Corner marked with 2" inside diameter
iron pipe capped with a 3" Brass
Tablet stamped

T147N R26W

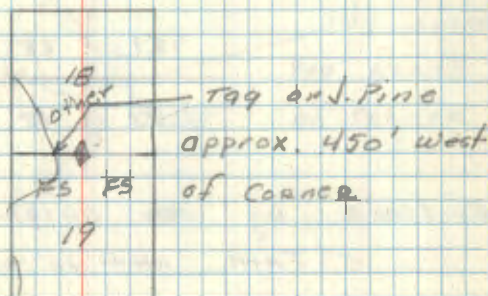
1/4 S-18 S19

RLS. 3628

Date 10/29/58

N-3

Affidavit



Metal location post is on a
18" R. Pine from which this corner
bears S46W 38.2 ft blazed
line from rd. to corner

Steel sign post w/ FS standard signs
54-2 & 54-4 attached set East 4.3 ft
5-2-67 RHM

ORIG. GOV'T. SURVEY 1876

SET WOOD POST

TAM. 10 S46W 180 Lks. = 118.80'

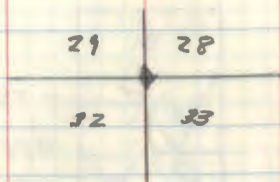
NO OTHER

3 V-9

Affidavit

V-9

COR to SEC. 28-29-32-33.



Evidence by one original Gov't BT.

5" TAM now 10" stub partly decayed with scribing visible

S 63W 80 lks or 52.8 feet

Also evidence of Co. Bts. of 1914

Page 35 Co Record Book ITASCA CO

TAM 6" M.B. N31W 55.2 ft. (now

7" windfall with marks visible)

Spruce 3" M.B. S44W 54.8' (now 9"

windfall)

NEW BT

SEC 29 9" TAM N85W 44.2'

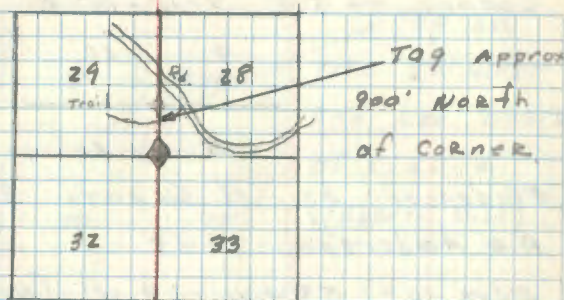
SEC 33 5" TAM S63E 42.9'

SEC 28 7" TAM N68½E 84.0'

CORNER marked by 2" inside diameter
IRON pipe filled with concrete and capped
with 3" dia brass tablet stampedT147N R26W
S28 S29 S32 S33

Date 11/10/58

RLS 562P

Metal location post on a
TAM from which this corner bears
N 60½ W 45 ft. BLASSED LINE
from trail to corner.

ORIG. GOV'T SURVEY 1876

SET WOOD POST

TAM. 5 S 63W 80 LKS. = 52.80'

TAM. 5 N 32W 78 LKS. = 51.48'

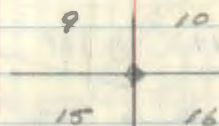
TAM. 6 N 9E 100 LKS. = 99.0'

NO OTHER

4 J-13

Affidavit
J-13

CORNER to SEC. 9-10-15-16

Evidenced by 4 County B.T.s. set by
A.O. ANDERSON 1949.ELM 10" S84W 23.4' (Now 13" not
scribed but blazed)BIRCH 8" N22E 25.0' (Now 9" not
scribed but blazed)ELM 9" S43½ E 59.5' (Now 14" not
scribed but blazed)BIRCH 14" S22W 29.1' (Now 14" not
scribed but blazed)

NEW B.T.S.

SEC. 16 10" ELM S71W 35.2'

SEC. 16 7" BALSAM S23W 11.4'

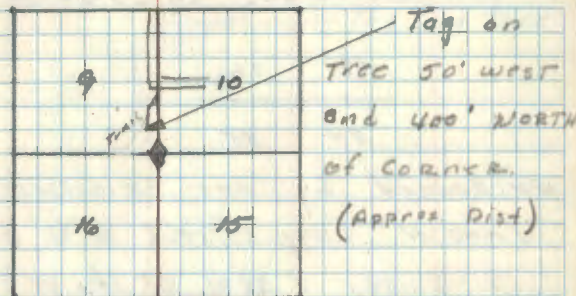
SEC. 15 7" BASSWOOD S84E 10.3'

CORNER MARKED by 2" inside dia pipe
filled with concrete & capped with 3"
dia Brass tablet MARKED

T147N 122W

S. 9-10-15-16

Date 10/16/58 R.L.S. 7629

Metal location post is on a Balsam
7" from which the corner bears
N23E 11.4'~~11-2-73 RMY BK~~~~Fit 2" IRON PIPE WITH BRASS CAP IN PLACE
10" ABOVE FOUND (MARK SERVICE)~~ORIG. GOV'T. SURVEY 1876
SET WOOD POST

· ASPEN 9 S67E 5 LKS. = 3.30'

ASPEN 8 N47E 15 LKS. = 9.90'

ASPEN 9 N31W 15 LKS. = 9.90'

ASPEN 7 S21W 18 LKS. 11.88'

5 V-17

Affidavit
V-17

CORNER TO SEC. 26-27-34-35

27	26
34	35

Evidenced by one ORIGINAL GOVT. B.T.
TAM 4" (now 5" stub with scribings visible
2-5-34) S 38W 68 lks. or 44.9 ff.

NEW B.T'S.

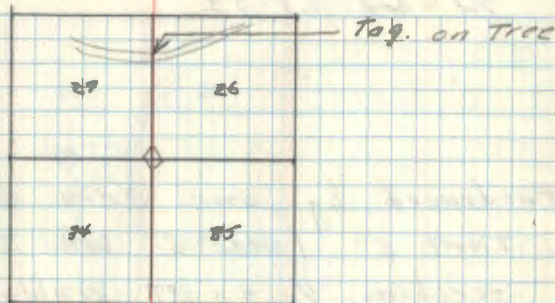
SEC 27	B. SPRUCE 2"	N 51W	13.1'
SEC 34	TAM. 3"	S 35W	19.8'
SEC 35	B. SPRUCE 4"	S 46E	8.9'
SEC 26	TAM. 3"	N 20E	13.2'

corner is a 2" inside diameter iron
iron pipe 5 feet long filled with
concrete and capped with a brass
tablet marked T142 N 226 W
5-26-27-34-35

Date 4/4/58 RLS. 3628

ORIG. B.T'S. 1876

TAM.	4	S 38W	68 lks. = 44.9'
TAM.	4	S 63E	100 lks. = 66.0'
TAM.	4	N 17E	450 lks. = 297'
TAM.	4	N 1W	— ?



Metal location poster is on a
spruce (4") from which corner
bears N 46W 9.0 feet.

11-2-93 RM + CK

Fd. 2" IRON PIPE WITH BRASS CAP - IN PLACE
10" ABOVE BLACK SPRUCE SWAMP

Fd. 1958 B.T'S

BLACK SPRUCE 4" N 51W - 12.95' NAIL + TAG SCRIBE VISIBLE
TAM 3" S 35W 19.75' NAIL + TAG - SCRIBE VISIBLE
TAM 3" N 20E 13.15' NAIL + TAG - " "
NOW 3" HIGH BLACK SPRUCE STUB 5" AT S 46E 8.9' SCRIBE VISIBLE

ORIG. TAM STUB 5" X 7" HIGH S 41W - 44.9' SCRIBE VISIBLE
CORNER IN THICK BLACK SPRUCE - MANY SMALL SPRUCE
IN UNDERSTORY - NEED TO BE RIGHT AT COR. TO SEE

NEW B.T'S 11-2-93

BLACK SPRUCE 4" S 25W - 13.85' NAIL + TAG NOT SCRIBED
BLACK SPRUCE 3" S 80E - 11.73' " " " "

WE CHAINED DUE SOUTH FROM FR #3229
3056 OUR LINE FELL S 3' EAST OF SEL. COR. IN SWAMP
MY LINE WAS FALLING 10' TO 20' EAST OF OLD BLAZE LINE
IN NORTHERLY TAM + SPRUCE SWAMP
APPROX S 1/4 PAINTED + RIBBONED (PIECE OF BRUSH
BY COUNTY) ALSO BLUE LINE WEST FROM APPROX S 1/4 COR.
OLD WOODS TRAIL FROM NW 1/4 IS APPROX. 50' NORTH OF
APPROX S 1/4

6 V-11

1/4 Sec 28-33

Evidenced by one Orig. Gov't. BT.

TAM 5" (now 8" Dead Stub with
scribing 1/4 S - BT visible

N 85W 33 Lks. \approx 21.8 ft.

NEW BTS.

SEC 33 Cedar 5' S79W 9.2 ft

SEC 33 Cedar 8' S20E 31.5'

SEC 28 Cedar 4' N28E 22.1'

Corner Marked by 2" inside diameter
5 foot long 1/2" pipe filled with
concrete & capped with brass Tablet
marked T147NR26N

1/4 S 28-30

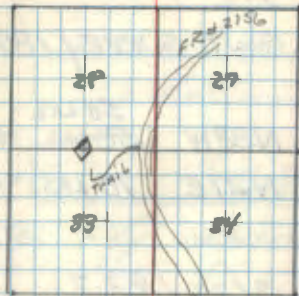
1958

RLS 3628

Date 10/6/58

AF Fidavit

V-11



Metah Location poster is on a
cedar (5') from which this corner
bears N79E 9.2'

ORIG. GOV'T. SURVEY 1876

SET WOOD POST

TAM. 6 S58W 29 Lks. = 19.14'

TAM. 5 N85W 33 Lks. = 21.78'

7 C-21

1/4 lot 1-2

NOTES OF ORIG. GOVT. SURVEY 1876 B.C. BALDWIN

SET POST

TAM.	3	N38W	50 LKS. = 33.0'
			50 LKS. = 33.28'
TAM.	3	N27E	70 LKS. = 46.20'

Evidenced by two Co BTS of Co. Survey of 1929.

TAM 5" N59W 71.6' (now 6" TAM with scribing visible)

TAM 5" N20W 103.5' (now 5" TAM dead with scribing visible)

TAM. 5 N70W 59.40' OFF CARD BY COUNTY 2/82

NEW BTS

SEC 2 TAM 5" N67W 53.6'

SEC 2 TAM 5" N5W 51.1'

SEC 1 TAM 5" N33E 71.5'

CORNER MARKED with 2" inside dia 1/2" pipe filled with concrete & capped with 3" dia Brass tablet stamped T147N R26W

1/4 S 1-2

R.L.S 3628

Date 12/11/58

CERTIFICATE FILED

Affidavit

C-21



approx 1/2 mile north to corner from Road

Metal location poster is on a 5" TAM from which this corner bears 55° E 51.0 feet.

8- J-7

1/4 bet 8-17

ORIG. GOV'T. SURVEY 1876

N. PINE 12 SIZE 33 LKS. = 21.78'

TAM. 6 N47E 31 LKS. = 20.46'

Evidence by two ORIGINAL GOV'T
B.T.s of 1876.

R. Pine 12" (now 26" stump no scribing
visible) SIZE 33 LKS or 21.8 ft.

TAM 6" (now 12" stump partially decayed
no scribing visible -

Corner was marked by 4x4 Cedar post
and Balsam tree, staked on 4 sides

NEW B.T.s.

Sec 8 Cedar 14 N4 1/2 W 49.5'

Sec 17 Maple 9 S 13 W 9.1'

Sec 8 Balsam 7 N 70 E 43.7'

CORNER MARKED by 2" inside dia
Iron pipe filled with Concrete & capped
with a 3" dia Brass tablet stamped.

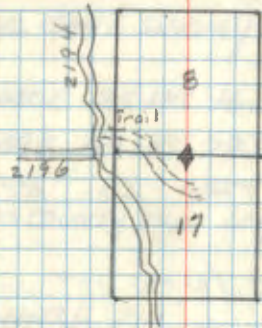
T147N R26W

1/4 S 8-17

R.L.S 3628

Date 10/29/58

Affi Davi * J-7



Metal Location poster on a Balsam
(9") from which corner bears N38W
9.5'

9 E-19

Affidavit

1/4 bet 2-11

E-19

Evidenced by Two Co. Bearing
Trees of 1936

W. OAK 9" S30W (now 12" with
scribing 1/4 visible) 123.9'

Twin Oak 9" N42E (now 10" with
scribing BT visible) 21.1'
3" scribed post in place.

New B.T.S

SEC 2 W. OAK 7" N77W 109.3'

SEC 11 W. OAK 7" S77 1/2 W 99.4'

SEC 2 B. ASH 12" N68E 48.1'

Corner marked by 2" dia concrete
filled iron pipe capped with brass
tablet stamped T147N R26W

1/4 S 2-11

RLS. 3628

Date 10/13/58.

RECORDED @ ITASCA CO. COURT HOUSE

CERTIFICATE FILED

NOTES OF ORIG. GOV'T SURVEY 1876 B.C. BALDWIN
SET POST

CEDAR 6 N40E 25 LKS. 16.5'

TAM. 4 S49E 43 LKS. 28.38'

NOTES BY ITASCA COUNTY PLAT LOT 2 SEC. 11 1936

Fd. GOV'T POST

TWIN OAK 7 N42E 21.1'

OAK 9 S30W 23.9'

2612.5' WEST TO SEC. COR. DISTANCE ON PLAT

10 R-9

CORNER TO SEC. 20-21-28-29

Evidenced by 4 original GOV'T B.T.s.

R. PINE 22" (now 28" stub with scribing
visible) N42W 5 LKS. or 3.3 ft.R. PINE 20" (now 28" stump with no
scribing visible) N74E 30 LKS. or 19.9'R. PINE 20" (now 24" stump no scribing
visible) S38E 42 LKS. or 27.7'R. PINE 18" (now 20" windfall stump
with no scribing visible) S45W 40 LKS.
or 26.4'

NEW B.T.s

SEC 20 R. PINE 6" N31W 37.1'

SEC 29 R. PINE 5" S58 $\frac{1}{2}$ W 25.0'

SEC 28 W. PINE 11" S78E 26.9'

CORNER MARKED by 2" inside diameter
iron pipe filled with concrete &
capped with 3" Brass Tablet stamped

T149N R26W

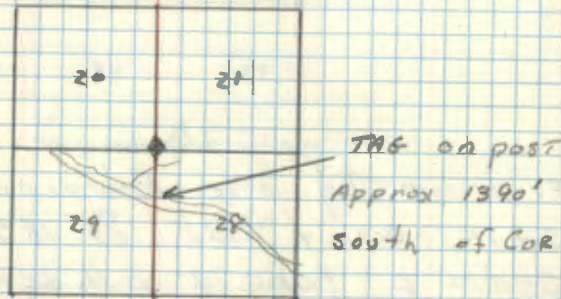
S-20-21-28-29

RLS. 362P

Date - 11/6/58

Affidavit

R-9

Metal Location poster is on a
R. PINE (5") from which the corner
bears N59 $\frac{1}{2}$ E 25.0'

ORIG. GOV'T SURVEY 1876

SET WOOD POST

N. PINE 22 N42W 5 LKS. = 3.30'

N. PINE 20 N74E 30 LKS. = 19.80'

N. PINE 20 S38E 42 LKS. = 27.72'

N. PINE 18 S45W 40 LKS. = 26.40'

11 V-5

CORNER TO SEC 29-30-31-32

Evidence by one Remaining
ORIG. GOV'T. B.T. of 1876.
Cedar 6" (now 14" with scribing
partially visible) S34W 13 LKS = 8.7'

New B.Ts.

SEC 30 Balsam 8" N40W 21.4'

SEC 31 Ash 8" S3W 35.5'

SEC 32 Ash 4" S45E 35.6'

SEC 29 Ash 4" N57 $\frac{1}{2}$ E 56.7'

CORNER MARKED by a 6" cylindrical
concrete monument 5' in length
capped with Brass tablet stamped.

T147N R26W

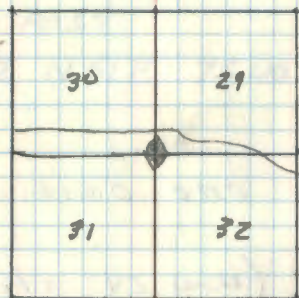
S. 29-30-31-32

RLS. 3628

Date 10/28/58

Affidavit V-5

old rd. goes
by corner



Metal Location poster is on a
Cedar (14") from which this
corner bears N34E 8.7'

ORIG. GOV'T. SURVEY 1876

SETWOOD POST

CEDAR 6 S39W 13 LKS. = 8.58'

BIRCH 10 S74E 12 LKS. = 7.92'

BIRCH 8 N36W 25 LKS. = 16.50'

SPRUCE 5 N23E 40 LKS. = 26.40'

12 P-9

1/4 bet 20-21

evidenced by one ORIG. GOV'T B.T.
of 1876.

R. Pine 22" (now 24" stub windfall
partly decayed with scribing
1-4-5 visible) N51E 75 Lks.
49.5'

New B.T.s.

Sec 20 Spruce 9 S45W 35.0'

Sec 21 Spruce 9 S58E 35.7'

Sec 21 Spruce 4 N23E 58.1'

Coencer Monument.

2" inside diameter iron pipe
filled with concrete capped with
3" dia Brass tablet stamped

T147 N. R26W

1/4 S-20-21

R.L.S. 3628

Date 11/18/58

Affidavit

P-9

ORIG. GOV'T SURVEY 1876

SET WOOD POST

N. PINE 22 N51E 75 Lks. = 49.50'

NO OTHER

1: 13 T-5

1/4 5-29-30

V/

E Evidenced by two ORIG. GOV'T B.T.
O of 1876

TAM 10" (now stump mostly decayed with no
scribing visible) N77E 21 LKS = 13.9'

TAM 6" (now stump mostly decayed with
no scribing visible) N32W 13 LKS = 8.6'

BIRCH B.T. S75W 14.8' set by
J. A. Gjølhaug in 1936 with 3x3 post

NEW B.Ts.

SEC 29 Ash 4" S41E 75.8'

SEC 29 Ash 6" S88E 71.5'

SEC 29 ASH 5" N53E 68.7'

CORNER Monument

2" inside diameter 12m pipe filled
with concrete & capped with Brass
tablet 3" dia stamped

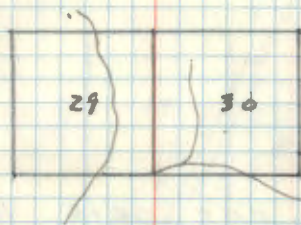
T147N R26W

Sec 1 29-30

Date 12/9/58 R.L.S. 3028

Affidavit

T-5



Metal Location poster on an
Ash (5") from which corner
bears S53W 68.6'

ORIG. GOV'T. SURVEY 1876

SET WOOD POST

TAM. 10 N77E 21 LKS. = 13.86'

TAM. 6 N32W 13 LKS. = 8.58'

114 R-3

1/4 5-19-30

Evidenced by one ORIG. Gov't. BT.
of 1876 -

J. Pine 10" (now 26" stump with scribing
1-ft visible) N50W 86.66 or 56.8'

Now BTs.

Sec 30 Cedar 7" S21E 33.2

Sec 19 " 6 N45E 19.5

Sec 19 " 6 N20W 4.2

corner monument

2" inside diameter iron pipe filled
with concrete & capped with 3" dia

Brass tablet stamped

T147 N1R26W

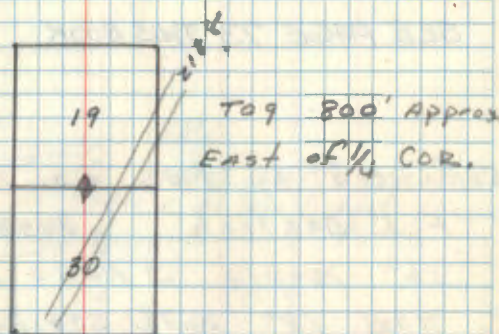
1/4 5-19-30

RLS. 3628

Date 10/29/58

Affidavit

R-2



Metal Location poster on a 6" Balsam
from which corner Brs. S66W 11.6'

ORIG. GOV'T. SURVEY 1876

SET WOOD POST

TAM. 8 S34W 14 Lks. = 9.24'

J. PINE 10 N50W 86 Lks. = 56.76'

16 E-17

Sec 2-3-10-11

13/14/58

SEE PAGE 73 THIS BOOK

Evidenced by two Co. Bts set by
F. J. Deslish 1949

16" maple S 83.30 E 6.8 FT.

now 18" with scribing S 11 BT

Visible S 89 E true bearing 6.8 FT.

Balsam 10" N 68° 30 E 12.2 FT.

now 11" with scribing visible

N 74 E true bearing 12.2 FT.

Corner consists of 1" pipe.

checks out O.K.

no evidence of orig. Bts.

New Bts.

Sec 3 Elm 7" N 77 W 56.9 FT.

Sec 10 H. Maple 5" S 64 W 54.0 FT.

Sec 11 H. Maple 4" S 65 E 58.5 FT.

Corner monument

2" inside diameter iron pipe filled
with concrete capped with 3"

diameter brass tablet stamped,

T 147 N R 26 W

R.L.S. 3628

3/2
10/11

1958

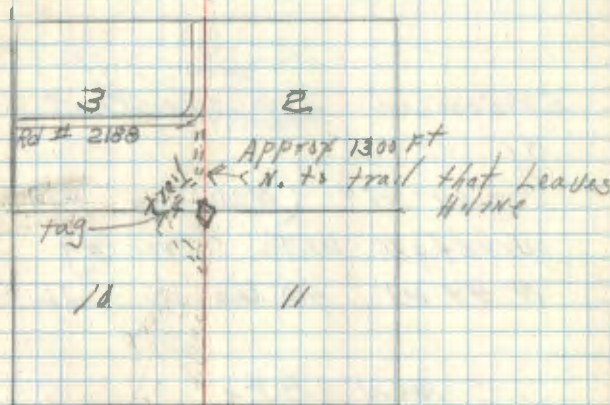
Affidavit
CERTIFICATE FILED

E-17

7777

26 W

J.F.L.

Metal location poster is on
18" maple from which the
cor. bears N 38° WI blazed line W. to trail, put
tag on maple approx. 400 FT west
of S. cor.

R27150-4 by Olson 4/15/60

NOTES OF ORIG. GOVT. SURVEY 1876 B.C. BALDWIN
SET POST

MAPLE 6 S 25 E 10 LKS. - 6.6'

IRONWOOD 9 N 2 E 10 LKS. - 6.6'

MAPLE 4 S 47 W 37 LKS. - 24.42'

BASSWOOD 10 N 40 W 39 LKS. - 25.74'

1/4 6-31 147-48-26.

Evidenced by one Orig Gov. Bt,
of 1876

Tam 5" (NOW 6" partly decayed
windfall with scribing Bt visible)
N 44 W 40 lks or 26.4 FT.

New B.t.s.

Sec 31 6" B. Spruce N 41 W 9.2 FT.

Sec 6 6" Tam. S 3 W 15.6 FT.

Sec 31 4" B. Spruce N 67 E 29.3 FT.

Corner monument

2" inside diameter 102" pipe filled
with concrete capped with 3" bronze
tablet stamped.

+ 148 N R 26 W

+ 147 N

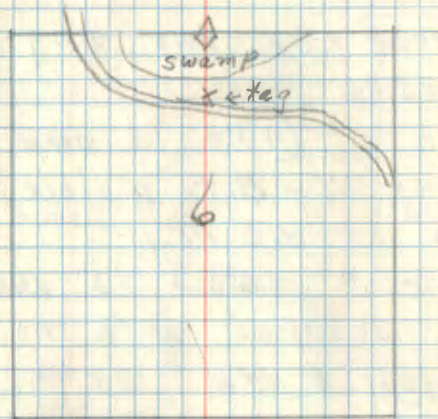
1958

R.L.S. 3628

Date 10-28-58

J.F.L.

+ 147-48 - 26



metal location marker is on S.E.
Side of a 6" spruce from which
this cor. bears S 41 E 9.2 FT.

I blazed line approx 600 FT south
to Rd put tag or post on
north side of Rd.

ORIG. GOV'T. SURVEY 1876

SET WOOD POST

TAM. 4 S 70 W 14 LKS. = 9.24'

TAM. 5 N 44 W 40 LKS. = 26.40'

1/4 Sec 6-7

Evidenced by two Orig Bts,
of 1876

J. Pine 5" (Now 13 dead with
scribing 1-B.t. visible) S57W
14 lks. or 9.2 ft.

J. Pine 5" (Now 10" windfall
partly decayed with no scribing
visible) N19W 24 lks. or 15.8 ft

New B.t.s

Sec. 6 R. Pine 8" N16W 47.2 ft.
Sec 7 R. Pine 12" S36W 25.4 ft
Sec 7 R. Pine 10" S49E 46.1 ft.

Corner monument

2" inside diameter 1072 pipe filled
with concrete capped with a
3" bronze tablet stamped

T 147N R 26W

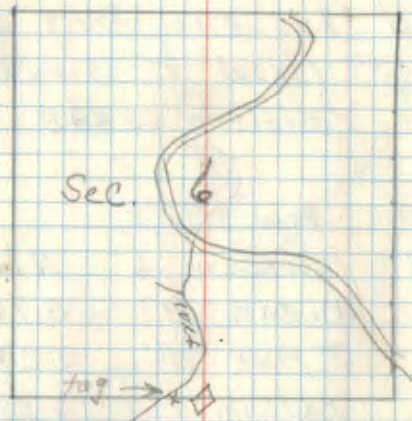
1/4 S 6-7

1958

Rls. 3628

11-28-58

T 147 - 26



Metal location poster is on the
N.E. side of a 14 R. Pine, from
which cor. bears N13E

2 blazed line west to old rd
and put tag on 4" Birch approx.
150 ft W. of cor.

ORIG. GOV'T SURVEY 1876

SET WOOD POST

J. PINE S S59W 14 lks. = 9.24'

J. PINE S N19W 24 lks. = 15.84'

18 N-5

Sec. 17-18-19-20

Evidenced by one Orig B.T. of 1876
Cedar 5" (Now 9" windfall with
scribing visible) S48E 12 Lks or 7.95'

New B.T.s.

Sec. 18 Balsam 6" N63W 9.1 ft.
Sec 19 W. Oak 13" S76W 48.9'
Sec 20 J. Pine 11" S28E 77.5'
Sec 17 Balsam 7" N57E 20.0'

Corner monument.

2" inside diameter iron pipe filled
with concrete capped with a 3"
bronze marker stamped.

T 147 N R 26 W

17-18-19-20

1958

R.L.S. 3628

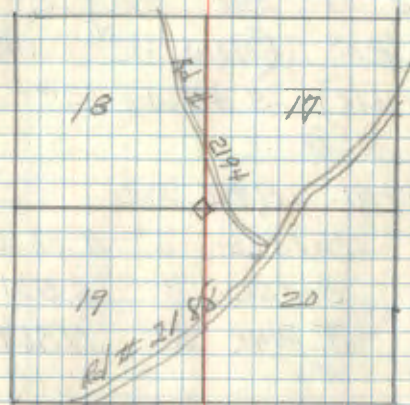
ORIG. GOV'T SURVEY 1876

TAM.	8	N58E	9 Lks. = 5.94'
CEDAR	5	S48E	12 Lks. = 7.92'
SPRUCE	8	S22W	10 Lks. = 6.60'
			7-11-58 JFL
SPRUCE	8	N40W	11 Lks. = 7.26'

Affidavit

N-5

T 147 N R 26 W



Metal location poster is on the
S.E. side of 6" Balsam from
C.O.P. bears S63E 9.1 ft.

I blazed line East to Rd # 2194
put tag on post along rd.
Approx. 400' west to S. CO.P.

Steel sign post 72" long w/ FS Standard
signs 54-2 & 54-4 attached set
East 3.3 Feet May 2 1967 G.H.M.
Snowing today

See: This book, pg 68

19 P-5

 $\frac{1}{4}$ sec 19-20

Evidenced by one orig. B.t. of 1876
R. Pine 20" (710W 32" with scribing
B.t. visible) S 45W 12 LKS or 7.9'

New B.t.s.

sec 19 Balsam 6" N 50W 17.5'
sec 19 Balsam 7" S 5W 56.1'
sec 20 J. Pine 12" N 86E 48.1'

Corner monument

2" inside diameter iron pipe filled
with concrete capped with a 3"
bronze tablet stamped,

T 147N R 26W

 $\frac{1}{4}$ 19-20

1958

R.L.S. 3628

ORIG. GOVT. SURVEY 1876

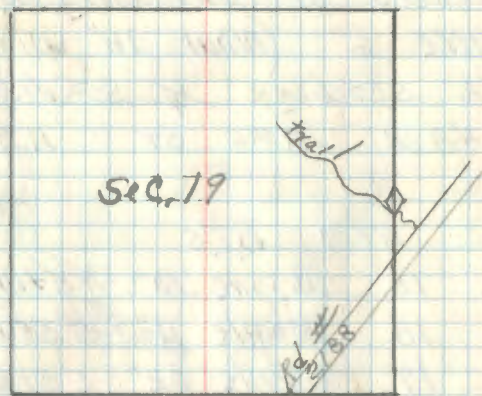
BALSAM 10 S 76E 18 LKS. = 11.88'

N. PINE 20 S 45W 12 LKS. = 7.92'

7-10-58 J.F.L.

Affidavit

P-5



Metal location poster is on the NW
side of a 10" J. pine from which
corner bears N 76W 56.0'

Corner and standing B.t. are just
north of old trail.

Steel sign post 72" long w/ F.S. standard
SIGNS 54-2 & 54-4 attached set North 3'

See this book, pp 66

20 L-5

 $\frac{1}{4}$ sec. 17-18

Evidenced by one Orig. Bt. of 1876
 J. PINE 6" (NOW 16" Wind fall
 with scribing $\frac{1}{4}$ S visible)
 N 48W 18 lks or 11.9'

New Bt.s

Sec 18 W. PINE 10" N 54W 49.1'
 sec 18 Maple 11" S 55W 47.8'
 * sec 17 W. PINE 22" S 51E 62.2'

Corner monument.

2" inside diameter iron pipe filled
 with concrete capped with a
 3" bronze tablet stamped.

+ 147 n R 26 W

 $\frac{1}{4}$ 17-18

1958

R.L.S. 3628

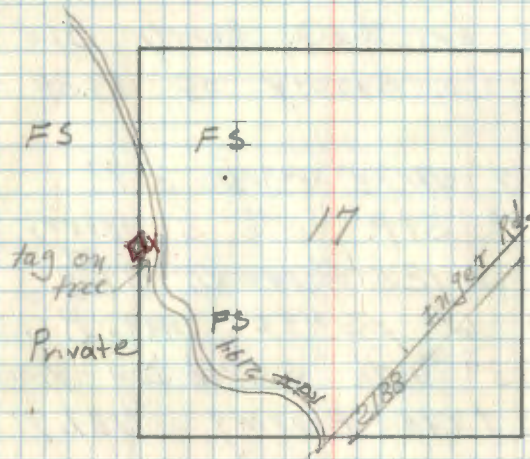
* this tree has been cut down/RHM

10-28-58 JFL.

Affidavit

K5

ORIG. GOV'T. SURVEY 1876
 J. PINE 6 N 48 W 18 lks. = 11.88'
 ASPEN 5 S 36 E 29 lks. = 19.14'



Metal location poster is on the NE
 side of 7" maple from which
 cor. bears N 18 E 2.5'

I blazed line East to Rd. put tag
 on 18" W. PINE on west side of Rd.
 APPROX 145 ft East of cor.

Steel sign post 72" long w/FS, standard
 Signs 54-2 & 54-4 attached set west 3.6'
 5-2-67 RHM

See: This book, pg 67

A-9

21 Sec 4-5-32-33 147-48-26

Evidenced by two County Bts.
of the Co. Survey of 1934

J. Pine 14" N 7E Mag. B. 37.9'

(Now 17" stp. with scribing,
visible) N 12E true B. 37.9'

J. Pine 6" S 44E Mag. B. 101.7'

(Now 13" with scribing visible)
S 39E true Bearing 101.7'

J. Pine

New Bts

Sec 5 R. Oak 3" S 76W 36.0'

Sec 4 R. Oak 5" S 44E 63.6'

Sec 33 Maple 7" N 34E 26.0'

Corner monument

6" cylinder concrete monument

15 ft. in length capped with

a 3" bronze tablet stamped,

+ 148 N R 26 W

+ 147 N

4-5-32-33

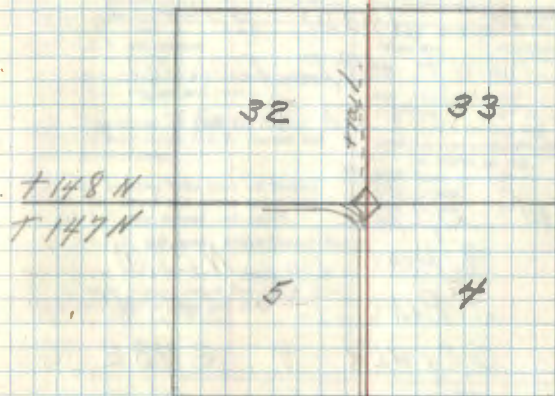
1958

RLS. 3628

Affidavit

A-9

10-23-58

Metal Location poster is on the
N.W. side of 6" post
from which cor. bears N 36 W 35'COR. IS APPROX 152' N OF CURVE
IN RD.a 4x4 Cedar post top foot painted
red marks the cor.

ORIG. GOVT. SURVEY 1876

J. PINE 8 N 80W 27 Lks. = 17.82'

J. PINE 6 S 53W 29 Lks. = 19.14'

N. PINE 8 S 58E 145 Lks. = 95.70'

ASPEN ~~3~~ ~~S 53E~~ N 17E 28 Lks. = 18.48'

22, E-13

Sec. 3-4-9-10

Evidenced by one Orig. B.T. of 1876
R. PINE 16" (Now 22" stump
with scribing B.T. visible)
N 69 1/2 E 348.0 lks or 229.6'

New B.T.s

Sec. 4 R. PINE 16" N27W 191.5'
Sec 9 J. PINE 13" S53W 114.5'
Sec 10 Spruce 9" S78E 46.0'
Sec. 3 Tam. 6" N76E 43.9'

Corner Monument

6" cylindrical concrete monument
5 feet in length capped with
a 3" bronze tablet stamped

T147N R26W

3-4-9-10

1958

R.L.S., 3628

Date 10-23-58 J.F.L.

Affidavit

E-13

T147N R26W

Index No. E-13 ITASCA COUNTY LAND CORNER RECORD
Location 3-4-9-10 T. 147 R. 26 P.M. 21
Description U.S.F.S. Conc. Brass Capped Mon.
Origin G.L.O. 1875 R.S. S.R. SUB SET

Reference		Corner Perpetuation Record			
Date	Wit.	Size	Bearing	Dist.	Remarks
1875	G.L.O.				set corner
1918	Road survey of P.C. Warner perpetuated G.L.O. corner and rewit.				
1939	Road survey of 1939 for Inger-Bowstring road found P.C.W. corner and perpetuated corner.				
1950	Sam Bensing Made plat of Oserad Shores. He found old stake point and set new I.P. for corner and rewit.				
1958	U.S.F.S. set conc. Brass Capped Mon.				
1982	Found U.S.F.S. conc. Brass Capped set in wrong place, reset Mon. with evidence from 1950 corner and wit.				
5-7-82	6-20-84				
GLO	Pine stp.	18"	N74E	229.52'	
1939	Tan.	8"	S79E	48.50'	
1950	Top-stake-wit		N53W	48.34'	tree down top and bottom scribing visible no marks on cul.
5/82	Tan.	6"	S80E	54.43'	
5/82	Spruce	5"	N70W	10.36'	
5/82	Spruce	5"	N05E	24.78'	
5/82	P.Pole		S44E	54.15'	

Metal location poster is on a
H-line pole from which the
COR. bears N 65 W 26.9'

a 4x4 treated cedar post
with top 1 foot painted red
marks the COR.

ORIG. GOV'T. SURVEY 1876

TAM. 6 S21E 80 Lks. = 52.80'

TAM. 8 S28W 162 Lks. = 106.92'

SPRUCE 5 N53W 49 Lks. = 32.34'

N. PINE 18 N69 1/2 E 348 Lks. = 229.68'

Cont'd in this book on pg 62.

23 E-9

Sec. 4-5-8-9

Evidenced by two County B.T.s
Put in by Co. Surveyor P.C. Warner
IN 1918

Basswood 13" N 63 W Mag. B.
46.9 FT (NOW 20" with scribing
visible) N 64 W true bearing 46.9'
Birch 6" S 44 W Mag. B. 36.7'
(NOW 12" stamp partly decayed
with scribing B.T. visible)
S 54 W true bearing 36.7 FT

New B.T.s

Sec 5 Elm 10" N 35 W 71.6 FT
Sec 8 Maple 8" S 49 W 94.5 FT
Sec 4 Balsam 7" N 28 E 168.9 FT

Corner monument

2" inside diameter iron pipe filled
with concrete capped with a 3"
bronze tablet stamped

T 147 N R 26 W

4-5-8-9

1958

R.L.S. 3628

Affidavit

E-9

11-3-58

Index No. E-9		ITASCA COUNTY LAND CORNER RECORD	
Location 4-5-8-9		T. 147 N R. 26 W P.M. 3	
Description 5 1/2" - bronze capped 1 1/2" Conc. Mon. w/ brass cap 10" below surface. 3/4" I.P.			
Origin G.L.O. 1918 R.S. <input type="checkbox"/>		S.R. <input type="checkbox"/>	SUB. <input type="checkbox"/>
Reference		Corner Perpetuation Record	
Book 31 79-92 44	1918 P.C. Warner set corner from G.L.O. evidence, and revit.	4/30/62-PS 1/18/82 B-20-84	
Basswood 13" N 63 W 46.90'	Birch 6" S 44 W 36.70'	Corner Mon. Found/Date	Set/Date
		Date	Wit.
		11/56	Elm 10" N 35° W 71.6'
		11/56	Maple 8" S 49° W 94.5'
		11/56	Balsam 7" N 28° E 168.9'
		1/02	P. Pole N44E 50.17'
		1/02	C. Pole N46W 53.70'
		3/18	Basswood N63W 46.00' rotted
		5/82	X Rock 2x3 87W 25.70'
		5/82	U.S.B.N. N53E 96.80'
1982 After running computations in office, we find the best possible location is the center of sheared off U.S.F.S. Mon. which is 0.45' S. & 0.60' W. of our redtop for corner. May 17, 1982 Our Office replaced Brass Capped Mon. with 3/4" I.P.		ENTERED IN FIELD BOOK 3/97	

COR. IS 6" below surface of Rd.

metal location poster is on a
post on the W. side of Rd
from which the COR bears N 75 E
28.2 FT.

Corner monument was bent and brass
cap sheared off by grader in 1962
Replaced with a 6" dia 24" long
cylindrical concrete monument with
brass cap stamped:

T 147 N R 26 W

S 5 | 54

S 8 | 59

1962

R.L.S. No 3628

4-30-62 R.H. McDonald

$\frac{1}{4}$ sec 4-5

Evidenced by Dnc County B.T.
Put IN by County Surveyor IN
1934

Birch 6" S41E mag. bearing
60.5 ft. (now 6" stub with
scribing visible) S45E true
bearing 60.5 ft.

New B.T.s.

sec 5 Cedar 15" N64W 70.5'
sec 5 Elm 4" S80W 38.3'
sec 4 W. Oak 11" N53E 96.3'

Corner monument

2" inside diameter iron pipe filled
with concrete capped with a
3" bronze tablet stamped,
T147 N R 26 W

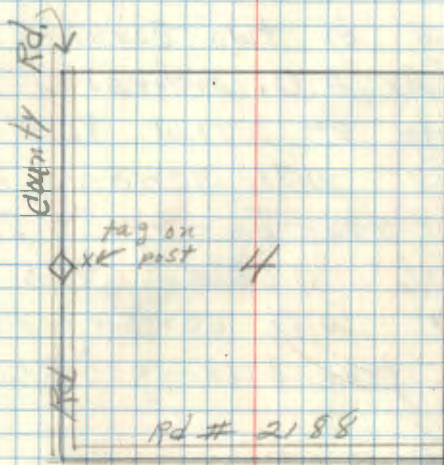
 $\frac{1}{4}$ 4-5

1958

R.L.S. 3628

11-3-58

J.F.L.



COR. is 6" below surface of Rd.
Metal location poster is just
across the ditch on East side
of Rd.

COR. was found to be marked
by 1" pipe 16" long

25 D-17

South $\frac{1}{16}$ bet. sec 2-3Evidenced by two County B.T.s
put in by A.O. Anderson 1949

Balsam 9" S70W 86.3'

(now 11" with scribing visible)

S76W true bearing 86.3'

Maple 6" S65E 31.0'

(now 9" with scribing visible)

S58E true bearing 31.0'

New B.T.s

Sec. 3 Iron wood 4" N73W 59.1'

Sec. 2 Maple 3" S50½E 22.8'

Sec 2 Maple 5" N89E 39.2'

Corner Monument

2" inside diameter 1024 pipe
filled with concrete capped with
a 3" bronze tablet stamped

T147 R 26

S $\frac{1}{16}$ 2-3

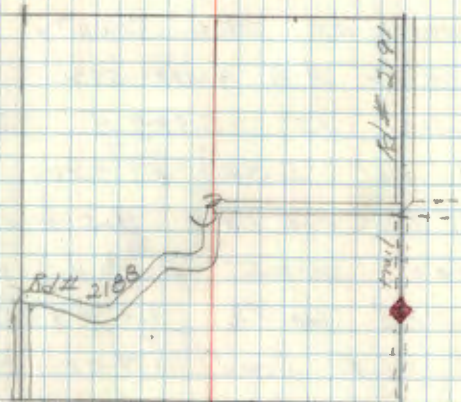
1958

R.L.S. 3628

10-15-58

Affidavit

D-17



COR is just East of trail with
4x4x4 treated cedar post top 1-foot
Painted red, approx 2 ft from COR,
metal location poster is on a
3" maple B.T. from which the COR
bears N50½W 22.8'

R9-7150-4 by Ron Oleson 4/15/88

26 C-17

10-10-58

1/4 Sec 2-3

SEE PAGE 72 THIS BOOK

Evidenced by one County B.T.

Put in by A.O. Anderson 1949

Bass Wood 15" S34 1/2 E 65.0'

(NOW 18" S32 1/2 E true bearing
with scribing visible)

Corner was found to be

marked with 3/4" x 18" iron rod,

could not find other. B.T. was

taken out by Hilvine and Rd.

All Orig. B.T.s were taken out
by same.

New B.T.s

Sec 3 Maple 4" N47W 94.2'

Sec 2 R. Oak 8" S27E 46.0'

Sec 2 R. Oak 10" N39E 58.3'

corner monument,

2" inside diameter iron pipe
filled with concrete capped with
a 3" bronze tablet stamped.

T147 - R 26 W

1/4 2-3

1958

RLS. 3628

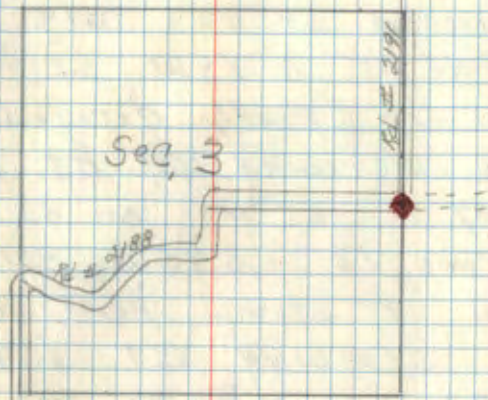
10-10-58 J.F.J.

J.B.

Affidavit
cond. filed ✓

C-17

T147 - R 26 W

Metal location post is on a
8 R. Oak from which the Co.R.
bears N 27 W 46.0'Brass cap 6" below surface of Rd.
March 29, 1958
decl. 5° eastPE # G. Kozenko
B. Avis
G. RobertsonRecovered a 2 1/2 in outside diameter iron pipe
flush with road and brass cap broken off
from which:Sugar Maple 9.1 in N44°E 116.65 ft to 16d nail on SE
face, double blaze, scr. 1/4 52 BT" w/6d spikeW. Oak 6.2 in S32°E 108.25 ft to 16d nail on E
face, double blaze, scr. 1/4 52 BT" w/6d spikeP. Oak 11.0 in N27°W 172.20 ft to 16d nail on SW
face, double blaze, scr. 1/4 53 BT" w/6d spike

27

E-15

1/4 Sec 3-10

Evidenced by two orig. Bts of 1876
 R. PINE 18" N 78W 62 Lks or 40.9'
 (NOW 20" partly decayed stump
 with scribing 1/4 Bt. visible)
 N 77W 62 Lks or 40.9'
 R. PINE 18" S 75W 50 Lks or 33.0'
 (NOW 19" stump partly decayed
 with scribing Bt. visible.)
 S 73 W 50 Lks or 33.0'

New Bts.

Sec 3. R. PINE 9" N 18W 31.2'
 Sec 10 R. PINE 8" S 38W 16.0'
 Sec 10 R. PINE 10" S 64E 30.6'

Corner Monument

2" inside diameter iron pipe
 filled with concrete capped
 with a 3" bronze tablet stamped
 T 142 N R 26 W

1/4 3-10

1958

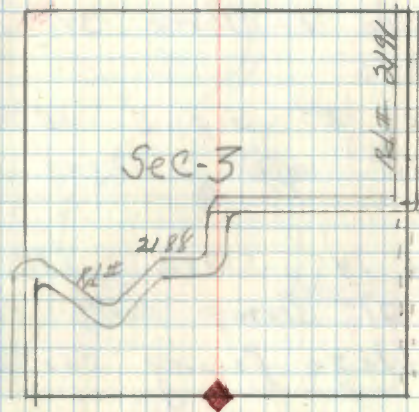
RLS. 3628

Date 10-15-58

JFL.
J.B.

Affidavit

E-15



State Auditor Stafford King
 owns Land on all sides of cor.
 ORIG. GOV'T. SURVEY 1876
 SET WOOD POST
 N. PINE 18 S 75W 50 Lks. = 33.0'
 N. PINE 18 N 78W 62 Lks. = 40.92'

Sec 16-17-20-21

Evidenced by Three Orig. B.T.s
of 1876

R. Pine 12" S 36E 18 lks or 11.9'
(Now 23" with scribing 4-7-R-S
Visible)

R. Pine 14" S 31W 20 lks or 13.2'
(Now 21" stamp partly decayed
with blaze facing cor. no scribing
Visible)

R. Pine 20" N 11E 18 lks or 11.9'
(Now 30" stamp partly decayed
with blaze facing cor. no scribing
Visible)

New B.T.s.

Sec 17 Balsam 6" N 66W 41.5'

Sec 20 J. Pine 8" S 33W 25.0'

Sec. 21 R. Pine 6" S 76E 29.3'

Sec 16 W. Spruce 10" N 31E 36.7'

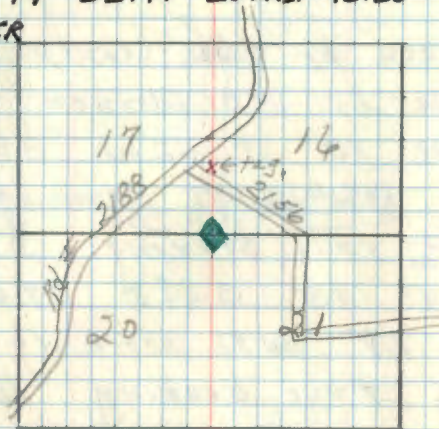
Corner monument.

2" inside diameter iron pipe filled
with concrete capped with 3"
bronze tablet stamped.

next page ←

SEE BOOK #2 PAGE 52
CONTINUED INFORMATION ON COR.

Affidavit
ORIG. GOV'T. SURVEY 1876
N. PINE 20 N 11E 18 lks. = 11.88'
N. PINE 12 S 36E 18 lks. = 11.88'
N. PINE 14 S 31W 20 lks. = 13.20'
NO OTHER



Metal location marker is on a
23" R. Pine B.T. from which the
cor. bears N 36W 11.9'

Blazed line north to Rd # 2156
APPROX. 1985 Feet. tag on post
north side of Rd.

+147 N R 26 W

16-17-20-21

1958

R.L.S. 3628

RR-7150-4 by Olsen 1979

29 N-11

1/4 Sec 16-21

Evidenced by two County B.T.s

Put in by P.C. Warner 1925

R. Pine 15" N 42W 38.5'

(Now 18" with scribing visible)

N 35 1/2 true bearing 38.5'

W. pine 13" S 88E 19.0'

(Now 1.8" with scribing visible)

S 82E true bearing 19.0'

NO Orig. Gov. B.T.s in evidence

New B.T.s,

Sec 16 R. Pine 15" N 1 1/2 W 80.3'

Sec 21 R. Pine 11" S 64W 51.8'

Sec 16 R. Pine 11" N 79E 65.1'

Corner monument

2" inside diameter iron pipe

filled with concrete capped

with a 3" bronze tablet stamped

T 147N R 26W

1/4 16-21

1958

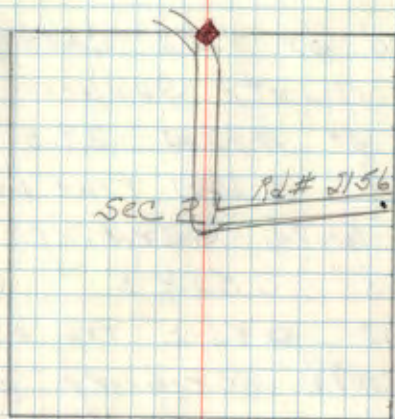
RLS, 3628

Date 10-16-58

J.F.L.
J.B

Affidavit

N-11



Metal location poster is on a
15" R. pine ^{post} which the cor. bears
S 31 1/2 W 47.7'

Also poster on post by Rd.
next to cor.

RR-7150-4 by Olsen 1929

ORIG. GOV'T. SURVEY 1876

SET WOOD POST

N. PINE 10 N 42E 7 LKS. = 4.62'

N. PINE 10 S 47W 83 LKS. = 54.78'

SEE PAGE 54 IN BOOK #2

CONTINUE

Center $\frac{1}{4}$ sec 10.Evidenced by two County B.T.s
of the County Survey of 1949
Spruce 9" N12W 29.5'(Now 14" N6W true bearing
29.5' with scribing visible)Maple 8" S52 $\frac{1}{2}$ E 67.8'(Now 10" S46E true bearing
67.8' with scribing visible)

New B.T.s

Sec 10 Larnwood 5" N30W 56.2'

Sec 10 R. Oak 3" S60W 36.6'

Sec 10 W. Spruce 6" N30E 86.2'

Corner monument,

2" pipe brass capped

Stamped +147N R26W

C- $\frac{1}{4}$ S-10

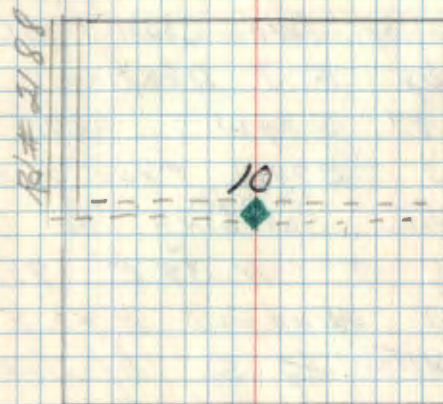
1958

R.L.S. 3628

Date 10-16-58

J.F.L.

J.B.

Metal location marker is on a
3" Aspen from which cor bears
North. 11.3^{##}Brass cap is 6" below surface
of old rd.

1/4 Sec 9-10

Evidenced by two County Bts
 Pat in by F. J. Deslish 1949
 W. Oak 7" S 74 W 64.7'
 (Now 10" S 79 W true bearing
 64.7' with scribing S visible)
 W. Birch 7" N 34 E 78.9'
 (Now 10" windfall N 42 E true B
 78.9' with 1/4 S 10 visible)
 COR. was marked by 1" x 24"
 pipe 3" below surface of Rd
 NO ORIG. GOV. Bts in evidence,
 New Bts.

Sec 9 W. Spruce 9" N 56 W 34.9'
 Sec 10 TWIN OAK 5" S 48 E 21.9'
 Sec 10 W. Spruce 7" N 31 E 70.8'

Corner monument

2" pipe brass capped 6" below surface
 of Rd.

stamped T147N R26W

1/4 9-10

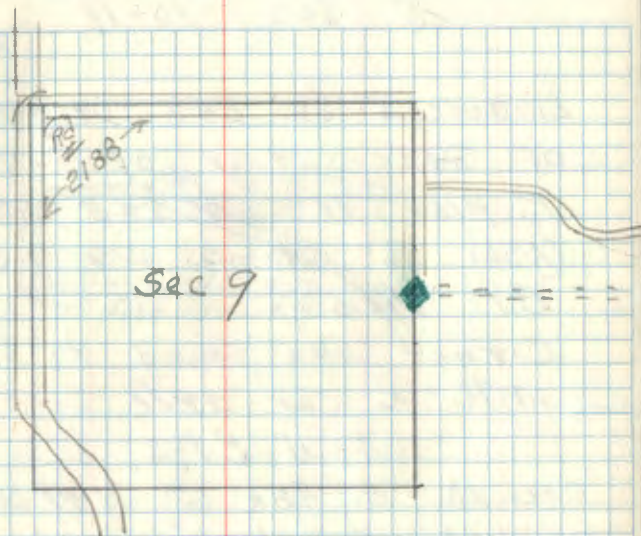
1958

R.L.S. 3628

date 10-15-58

J.F.L.

J.B.



Metal location post on a
 3" TWIN OAK from which cor
 bears N 48 W 21.9 FT.

ORIG. GOV'T. SURVEY 1876

SET WOOD POST

ASPEN 8 N 33 W 101 LKS. = 66.66'

ASPEN 10 N 21 1/2 E 240 LKS. = 158.40'

32 G-17

1/4 Sec 10-11

Evidenced by one Orig. BT,
of Gov survey of 1876
R. PINE 14" N 84E 37LKS or 24.4'
(NOW 16" stamp with scribing
Bit. Visible)

Corner was found to be marked
with a car axle.

New B.T.s.

Sec 10 B. Ash 6" N 41W 45.8'
Sec 10 B. Ash 8" S 56W 47.4'
Sec 11 W. Oak 4" N 51E 32.3'

Corner monument

2" pipe brass capped 18" above
ground

stamped +147N R26W

1/4 10-11

1958

R.L.S. 3628

NOTES ~~OF~~ ORIG. GOV. SURVEY 1876 B.C. BALDWIN

SET POST

ASPEN 12 ~~N10W~~ 64 LKS.

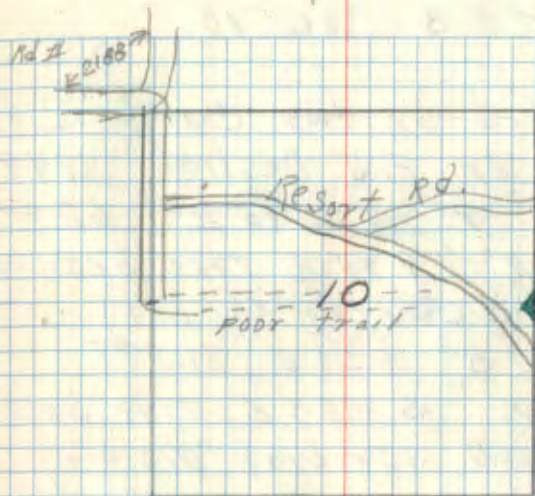
N. PINE 14 N 84E 37 LKS.

Date 10-28-58

J.F.K.
J.B.

Affidavit

G-17



Metal location post is on
the N.E. side of 8" Ash from
which the cor. bears N 56E 47.4'

Line clearing runs N & S between
Sec 10-11

4/14/80 To perpetuate this cor & set 2
New B.T.s

Ash 5" N 74W 42.87 Mkd. 1/4 S 10 BT

Ash 10" S 52W 60.70 " 1/4 S 10 BT

Set 6" steel post south 1.8' w/signs

R9-7150-4 by Olson

4/14/80 Olson

NOTES BY ITASCA COUNTY (PLAT) LOT 2 SEC. 11 11936

FD. GOV'T. PINE NORWAY 14 N 84E 24.4'

NEW BT. ASH 10 N 82W 42.3'

CE $\frac{1}{6}$ # 8 Sec 10

Evidenced by two County B.T.s.

put in by F. J. Desligh 1949

J. pine 9" N 32° 45' E 62.9 ft

(Now 11" N 44° E true bearing
62.9' scribing visible)

W. pine 8" S 58° E 81.5 ft

(Now 10" S 43½° E true bearing
81.5' with scribing visible)Cor. was found to be marked
with 1x24" pipe.

New B.T.s.

Sec 10 W. Pine 12" S 42° W 57.8 ft

Sec 10 W. Pine 10" S 43½° E 81.5'

Sec 10 J. Pine 11" N 44° E 62.9'

Corner monument

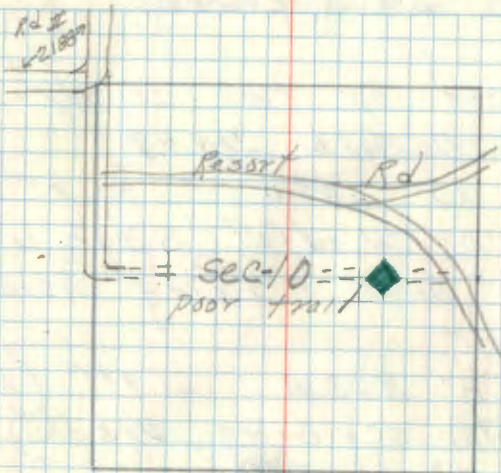
2" pipe brass capped 6" below
surface of rd.

T-147N R-26W

stamped $\frac{1}{6}$ # 8 Sec 10

1958

R.L.S. 3628

Date 10-28-58 J.F.L.
J.B.Metal location poster is on the
N.W. side of a spruce from
which this cor bears N 48° W

56.4 ft.

checked OK 5-12-66 RHM

1/4 Sec 10-15

Evidenced by two County B.T.s
by F.T. Deslish 1949

Birch 10" S27W 45.9 FT.

(Now 10" Windfall S39½W true
bearing with scribing visible)

45.9 FT.

Maple 8" N12W 61.9 FT (Now)

10" with scribing visible)

North 0° 61.9 FT.

Cor. was found to be marked
by ½" x 24" pipe. No evidence
of Orig Gov. B.T.s.

New B.T.s.

Sec. 10 Elm 5" N26½W 26.7 FT.

Sec 15 Ash 3" S23E 43.5 FT.

Sec 10 Ash 3" N49E 17.4 FT.

Corner monument

2" pipe brass capped

Stamped T147N R26W

1/4 10-15

1958

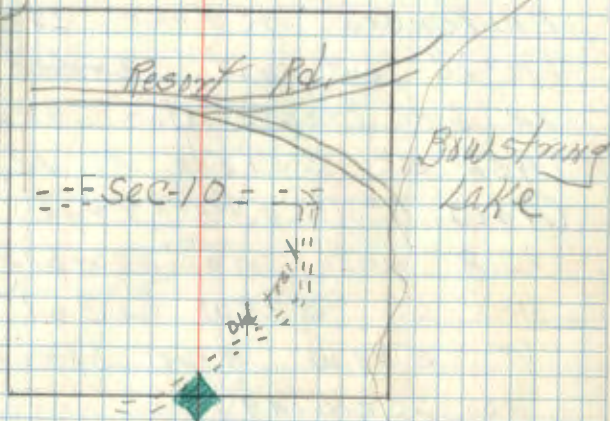
R.L.S. 3628.

Date 10-16-58

JFL
J.B

Affidavit
ORIG GOVT. SURVEY 1876
BIRCH N12W 13LK. = 8.58'
LYNN & S12W 31 LK. = 20.46'

Rd #
21887



Metal location past or S.W.
side of 3" Ash from which
this cor. bears S49W 17.4 FT

Also tag on tree approx 100 FT
west of cor. along old trail

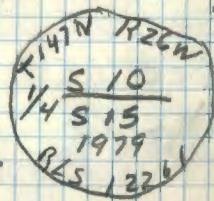
Dec. 1979 I found this cor. monument bent
and cap was destroyed. I replaced this with
a new monument which was a 2" x 5" long iron
pipe w/ brass cap. Marked

from which bears

Ash 2" S46E 57.2'

Mkd. 114 S 15 BT

8" long steel post East 2.1'
w/ sign 54-2754-4



19-7150-4 by Olson

12/79
Ronald Olson

35 J-17

Sec 10-11-14-15

Evidenced by Four County B.T.s
blazed but not scribed, put
in by Hasco Co. Surveyor 1939

Ash 5" S51E 12.8 FT.

(NOW 7" S43E true bearing
12.8 with no scribing)

Ash 6" S39W 36.1 (NOW
8" S44W true bearing 36.1
no scribing)

Ash 7" N37W 27.1 FT (NOW
9" N32W true bearing
27.1 FT no scribing)

Elm 10" N32½E 24.1 FT
(NOW 12" N41E true bearing
24.1 FT no scribing)

New B.T.s.

Sec 11 Ash 6" N3E 38.1 FT

Sec 15 Ash 5" S85W 6.6 FT

Sec 15 Ash 5" S10W 13.9 FT

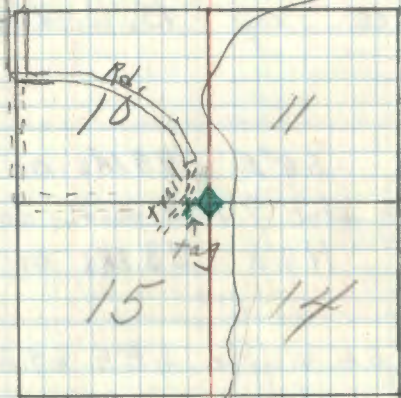
Sec 14 Ash 6" S78E 31.8 FT

Corner monument

2" pipe brass capped
18" above ground,

ORIG. Affidavit J-17
ASPEN 10 N86E 1546 9.90'
ASPEN 4 S40E 2746 17.82'
ASPEN 10 S76W 9646 63.36'
ASPEN 4 N86W 7146 46.86'

Rd # 2189



Metal location poster
on N.E. side of 6" ash
from which the cor. bears
S 10 W 13.9 FT.

tag on cedar on East side
of trail approx 250 FT west
of COR.

COR. stamped T147N R26W

10 11
13 17
1958

R.S. 3628

RR 160-4 by R. Olsen 1939

Affidavit 7147-R26 - Sec 6
36 A-34 R#M 7148-R26 - Sec 31
M.C. West Bank Sand Lake

Orig Notes: by B.C. Baldwin
1875

W. Pine 16" S8°E 981Ks or 64.68'
(Now a W. Pine stub 9' high partly decayed with
Aspen 6" N4°E 331Ks or 21.78')

Not found.

Scribe MC 56 visible S8°E 64.68'
Found a squared oak post marking corner

Set a 2" inside dia. 5' long galvanized wrought
iron pipe filled with concrete and capped
with a 3" dia. bronze tablet stamped:-

7148N R26W
S 31 / M.C.
S 6 /
7147N
1961
RLS NO 3628

Red Pine 20" N85°W 65.0' MKD MCS 31 BT
Jack Pine 16" S44°W 79.1' MKD MCS 6 BT
12/19/61 R.H. McDonald

Revised
affidavit filed
Nov. 1 1964

37

Town Corner T147-148 R26-R27

(Orig Notes by B.C. Baldwin 1875)

N. Pine 16" S41°E 271Ks

N. Pine 18" N15°E 321Ks

N. Pine 18" S35°W 13 1Ks

N. Pine 17" N49°W 39 1Ks

F-15
38

Center North $\frac{1}{6}$ Cor. Sec. 10
Survey by Frank J. Destlich in
1949. Plat is recorded in
Itasca Co. Courthouse.

Iron Monuments

found Iron in place

Spruce 6" S75°W 5.6'

New Rotten Spruce stump S80W 5.6'

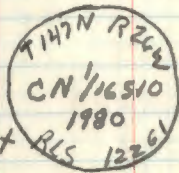
Spruce 5" N32°30'6" 10.4'

New Rotten spruce stump w/ scribe visible N38E 10.4'

To perpetuate this corner I set a
2" x 5" Gal. Iron pipe w/ brass cap. Marked

from which bears

Cedar	Cedar	Cedar	steel Post
11"	10"	9"	8"
N34E	N61W	S38E	East
30.9'	25.50'	30.48'	2.8'



Mkd. CN $\frac{1}{16}$ S10 B.T.

RR-7150-4 by Oleson

4/15/80
Ronald D. Oleson

39 F-16

North East $\frac{1}{4}$ Cor. Sec. 10
Survey by Frank J. Deslich in
1949. Plat 15 recorded in
Itasca Co. Courthouse.

Iron pin found Iron pin in place
176.49 South of W.C. South side W. Olson lot

Birch 12" N46°30' 18.7'

Poplar 7" N66°45'W 20.2'

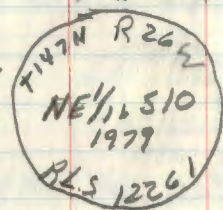
To perpetuate this corner I set a
2" x 5' gal. Iron pipe with Brass Cap
from which Bearings.

Marked

R. Pine 24" N80°W 68.16'

R. Pine 16" S48°W 49.90'

R. Pine 14" S28°W 39.57'



8" steel sign post

1.85

12/19/79

Ronald W. Olson

R9-7150-4 by Olson

40

North $\frac{1}{6}$ Cor. Sec. 9-10

Survey by Frank J. Deslich IN

1949. Plat is recorded in

Itasca Co. Courthouse.

Iron Monument

Poplar 4" N42°36'W 53.8'

Poplar 7" N50°45'S 92.2'

41 A-13

Sections 3-4-33-34

Corner was evidenced by one blazed and scribed bearing tree and two mxp. rocks from the Itasca Co. survey of 1944.

1. White Birch $14^{\circ} S 18^{\circ} E$ magnetic 34.3 Ft. (Now 15° Birch $S 10^{\circ} E$ true 34.3 Ft. w/ scribe visible)
2. 20" rock $N 77^{\circ} E$ mag. 15.5' (Now $N 89^{\circ} E$ 15.5' with chiseled X on top.)
3. 30" rock $S 70^{\circ} W$ mag. 56.0 Ft. (Now $S 77^{\circ} W$ true 56.0 Ft w/ X chiseled on top.)
4. Corner was found to be marked by a $1\frac{1}{2}$ " dia iron pipe.
5. two orig. Gov't. bearing tree stump holes were found & checked out w/ corner.

Set a 2 inch inside dia meter, 5 foot long galvanized steel pipe filled with concrete and capped with a 3 inch diameter bronze tablet stamped:

T148N R26W
S 33 | 539
S 4 | 53
T147N
1958
RLS No 9628

Basswood 8 inch $N 23^{\circ} W$ 25.1 Feet
Maple 7 inch $S 38^{\circ} E$ 50.5 Feet
Rock 30 inch $S 77^{\circ} W$ 56.0 Feet
Rock 20 inch $N 89^{\circ} E$ 15.5 Feet

Affidavit

A-13

33

T148N R26W

34



34

T147N R26W

3

ORIG. GOV'T. SURVEY 1876

SET WOOD POST

ASPEN 8 S28E 22 LKS. = 14.52'
ASPEN 10 S53W 27 LKS. = 17.82'
BIRCH 6 N80E 13 LKS. = 8.58'
BIRCH 5 N29W 22 LKS. = 14.52'

42 A-25 Town Corner

Sections 1-6-31-36 T147-148N R25-26W
 Corner was evidenced by 3 scribed BT's
 from the original govt. survey of 1876.

1. Spruce 7 inch (Now partly decayed with scribe "5" visible S4°E 19 lks or 12.5 Ft.)
2. Aspen 6" (Now stump hole S78°W 38 links or 25.1 Feet.)
3. Aspen 6" (Now stump hole N30°E 10 links or 6.6 Feet.)
4. Corner was found to be marked by a 4"x4" cedar post partly decayed believed to be established by County surveyor B.C. Craig in 1920.

Set a 2 inch inside dia. 5 foot long galvanized steel pipe filled with concrete and capped with a 3 inch diameter bronze tablet stamped:

T148N
 R26W, R25W
 S36 | S31
 S1 | S6
 T147N
 1958
 RLS NO 3628

Cedar 8 inch N75½°W 64.3 Feet
 Ash 5 inch S33°E 13.5 Feet
 Cedar 6 inch N71°E 52.0 Feet

Affidavit

A-25

36

31

ORIG. GOVT. SURVEY 1876

SET WOOD POST
 ASPEN 7 N41W 12 LKS. = 7.92'
 ASPEN 6 N30E 10 LKS. = 6.60'
 ASPEN 6 S78W 38 LKS. = 25.08'
 SPRUCE 7 S4E 19 LKS. = 12.54'

FS

148-26 148-25

147-26 147-25

Private

BOWSTRING ROAD SURVEY-1927
 MARKED NEW BT'S.

SPRUCE 8 S26W 60.8'
 ASPEN 10 N15E 55.9'
 ASPEN 11 N33W 57.7'

6

43 C-25

Quarter Corner sections 1-6 T147N
R25-26W

Corner was evidenced by a partially
decayed scribed post laying adjacent to
a fence corner post. Ajoining landowner
R.F. Pox testified he had pulled up
corner and set Fence post in its
place in 1935.

Set a 2 inch inside diameter, 5 foot long
galvanized steel pipe filled with concrete
and capped with a 3 inch dia. bronze
tablet stamped

T147N
R26W R25W
S1 | S6
1958
RLS NO 3628

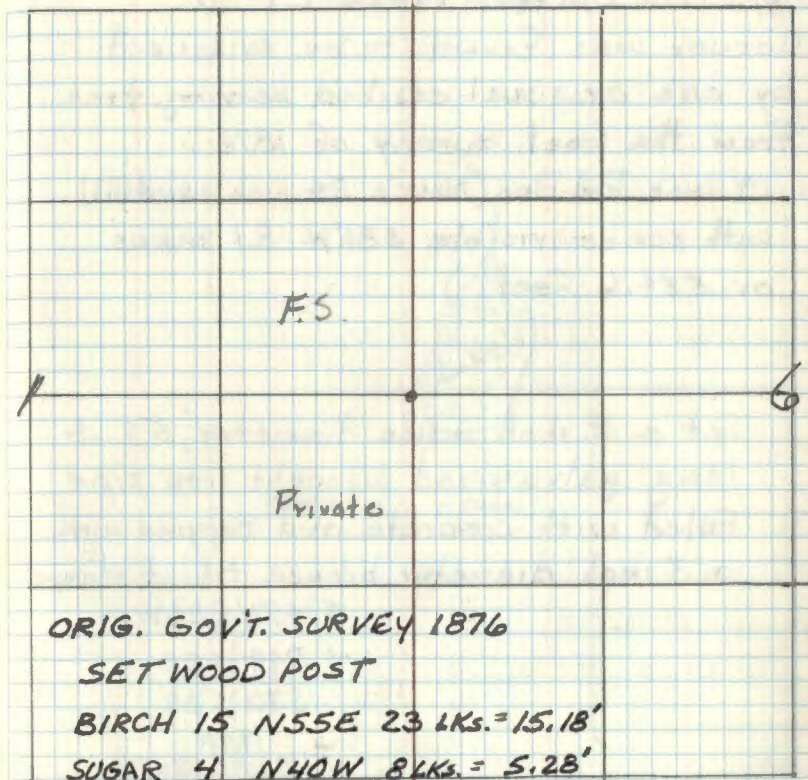
Elm 5 inch N 23° W 20 ft.

Basswood 6 inch S 64° W 11.3 Feet

Elm 4 inch N 40° E 10.3 Feet

Affidavit

C-25



ORIG. GOV'T. SURVEY 1876

SET WOOD POST

BIRCH 15 N 55 E 23 Lks. = 15.18'

SUGAR 4 N 40 W 8 Lks. = 5.28'

BOWSTRING ROAD SURVEY 1927

NEW BT's.

BASSWOOD 16 S 55 W 39.9'

BALSAM 5 N 81 1/2 E 95.8'

44 R-5

Section Corner 19-20-29-30

Corner was found to be evidenced
by one original scribed bearing tree
from the Govt. survey of 1876.

1. 14 inch Red Pine (Now a 24 inch windfall)
with scribe visible S86°W 810 chains
or 534.6 Feet.)

Set a 2 inch inside diameter, 5 Foot
long galvanized wrought iron pipe
filled with concrete and capped with
a 3 inch diameter bronze tablet stamped

T147N R26W

S19 | S20

S30 | S29

1958
RLS. NO. 3628

Elm 6 inch N30°W 241.0 Feet

Ash 3 inch N53°W 276.8 Feet

Ash 6 inch S85½°W 237.5 Feet

ORIG. GOVT. SURVEY 1876

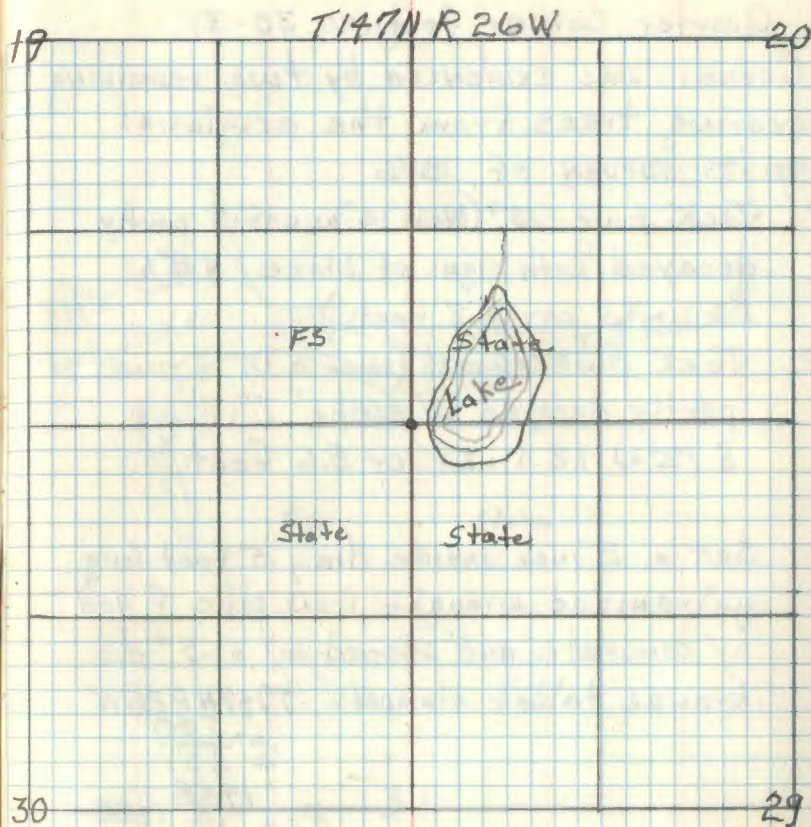
SET WOOD POST

BALSAM 6 N85W 375 LKS = 247.50'

N. PINE 14 S86W 810 LKS = 534.60'
NO OTHERS

Affidavit

R. S.



45 V-3

Quarter Corner Sections 30-31

Corner was evidenced by two remaining bearing trees from the original govt. survey of 1876

1. Jack pine 10" (Now 14" windfall partly decayed with signs of blaze N 8° W 20 links or 13.2 feet.)
2. Jack pine 10 inch (Now a 12" J. pine partly decayed w/ scribe "T. visible S 12° W 13 links or 8.6 feet.)

Set a 2 inch inside dia, 5' Foot long galvanized wrought iron pipe filled w/ concrete and capped w/ a 3" dia; bronze tablet stamped:

T147NR26W
 1/4 530
 4 531
 1958
 R.L.S. NO 3628

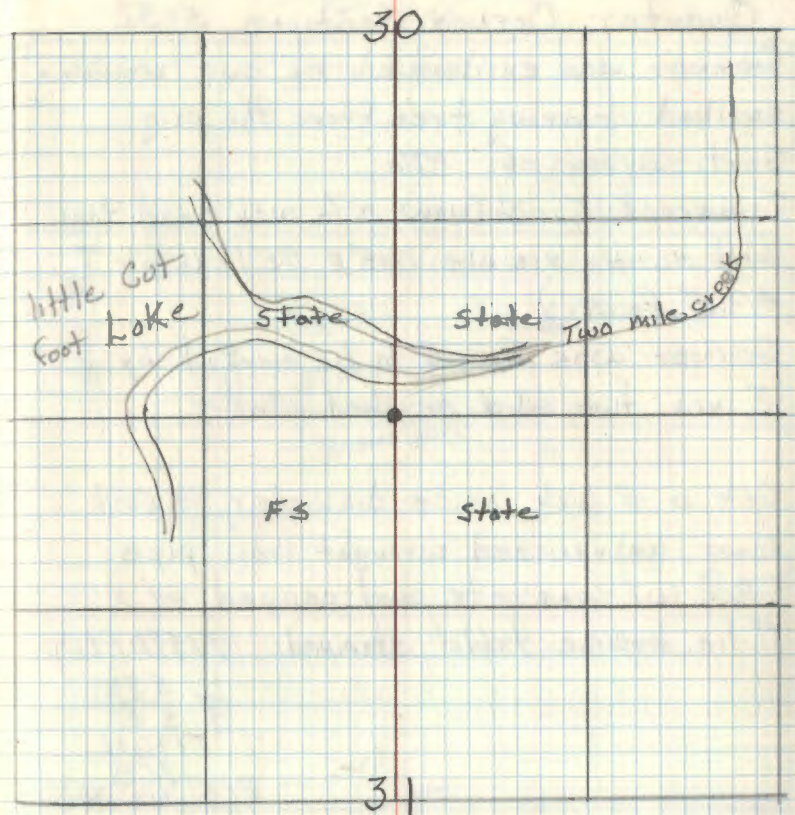
White pine 10" S 0° 30' W 59.2 Feet

Spruce 7" S 34° E 46.9 Feet

White oak 8" S 71° E 77.3 Feet

Affidavit

V-3



ORIG. GOV'T. SURVEY 1876

SET WOOD POST

J. PINE 10 S 12° W 13 LKS. = 8.58'

J. PINE 10 N 8° W 20 LKS. = 13.20'

46 Z-7

Quarter Corner Sections 5-32

Corner was evidenced by one remaining
scribed bearing tree from the orig
Govt. survey of 1876

Tamarack 5 inch (now a 6 inch dead tam.
with scribe visible $S18^{\circ}E$ 75 links or
49.5 feet.)

Corner was found to be marked by a
3 inch two sided scribed stake

Set a 2 inch inside diameter, 5 foot
long galvanized wrought iron pipe
filled w/ concrete and capped w/ a
3" dia. bronze tablet stamped: T197N R26W

L 532
4 55
T196N
1958
RLS NO 3628

Tamarack 6 inch $N72^{\circ}W$ 11.6 feet

Tamarack 7 inch $S16^{\circ}E$ 9.2 feet

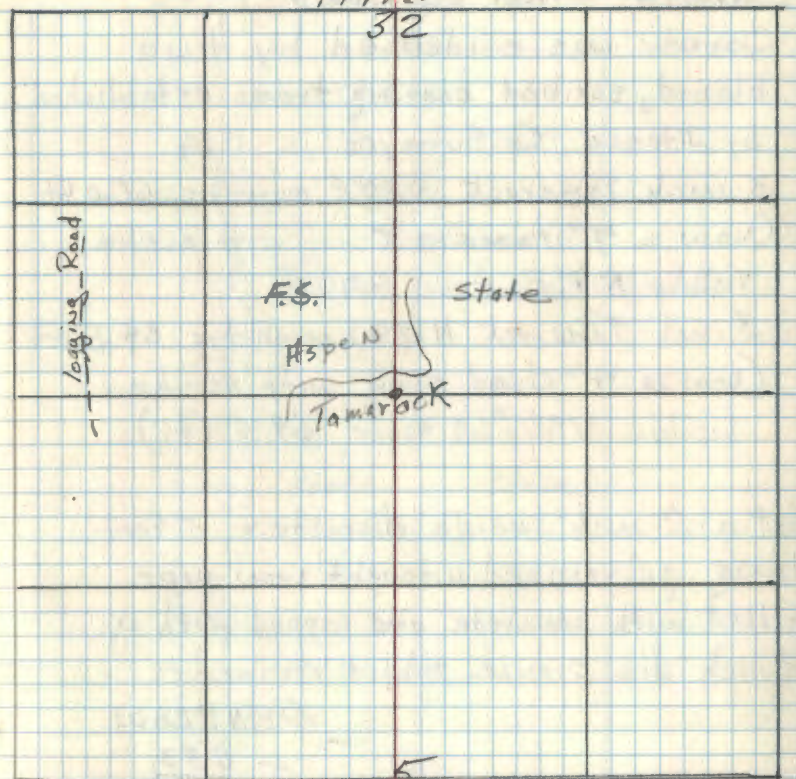
Tamarack 6 inch $N33^{\circ}E$ 13.3 feet

Affidavit

2-7

T197N

32



T196N

ORIG. GOV'T. SURVEY 1876

SET WOOD POST

TAM. 4 $N6^{\circ}W$ 108 LKS. = 71.28'TAM. 5 $S18^{\circ}E$ 75 LKS. = 49.50'

47 Z-11

Quarter Corner sections 4-33

Corner was evidenced by two blazed, scribed bearing trees established by Itasca Co. Surveyor in 1914.

1. 3 inch Tamarack S 20° E magnetic 60.0 ft.
(Now a 7" tamarack with scribe visible S 7° E true 60.0 ft.)
2. 3 inch Tamarack N 12° W magnetic 64.5 ft.
(Now a 4" dead snag with scribe visible N 4 1/2° W true 64.5 ft.)

Set a 2 inch inside diameter, 5 foot long galvanized wrought iron pipe filled with concrete and capped with a 3 inch dia. bronze tablet stamped:

T147N R26W

1/4 S 33
4 54

T146N

RLS NO 3628

Tamarack 5 inch N 31 1/2° W 80.9 Feet

Tamarack 8 inch S 3° W 24.4 Feet

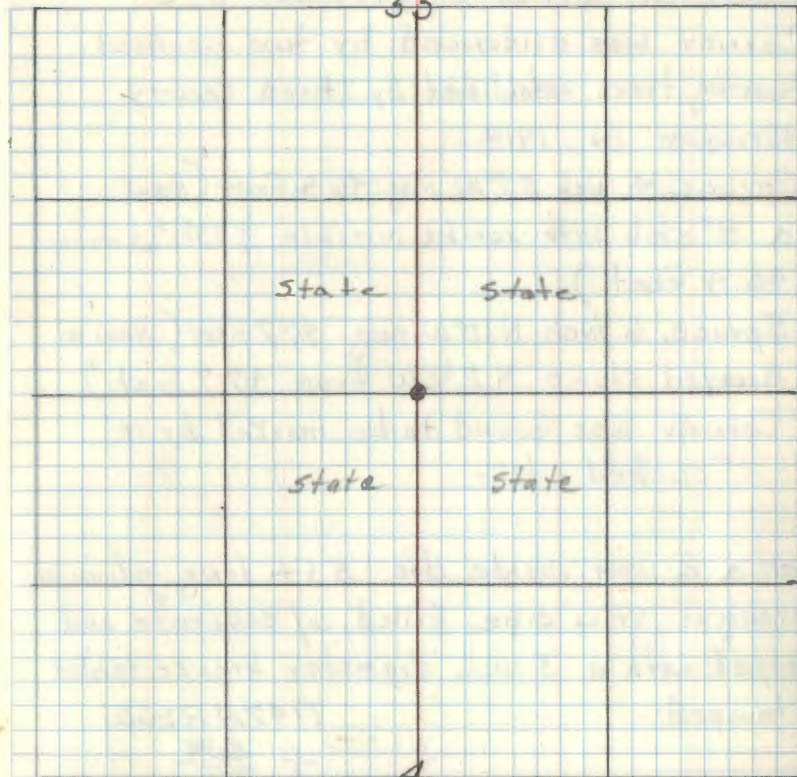
Tamarack 5 inch N 39 1/2° E 65.7 Feet

Affidavit

47-2-11

T147N R 26W

33



state

state

state

1/4
T146N

ORIG. GOV'T. SURVEY 1876

SET WOOD POST

TAM. 6 S 48 W 10 LKS. = 61.60'

TAM. 3 N 12 1/2 W 82 LKS. = 54.12'

48 Z-15

Quarter Corner of Sections 3-34
Corner was evidenced by two scribed
bearing trees established by Itasca County
Surveyor in 1914.

1. Spruce 4 inch $S 70^{\circ}W$ mag. 46.4 Feet (Now
a 8" stub with scribe visible $S 13\frac{1}{2}^{\circ}W$ true
46.4 Feet.)
2. Spruce 6 inch $N 10^{\circ}W$ mag. 47.7 Feet (Now a
decayed stump $N 2\frac{1}{2}^{\circ}W$ true 47.7 Feet.)
3. Corner was found to be marked by a
3" scribed stake

Set a 2 inch inside dia. 5 Ft. long galvanized
wrought iron pipe filled w/ concrete and
capped with a 3 inch diameter bronze tablet
stamped:-

T147N R26W

$\frac{1}{4}$ 534

S 3

T146N

1958

RLS NO 3628

Balsam 5 inch $N 75\frac{1}{2}^{\circ}W$ 35.9 Feet

Spruce 7 inch $S 31^{\circ}W$ 52.8 Feet

Spruce 7 inch $S 3\frac{1}{2}^{\circ}W$ 46.7 Feet

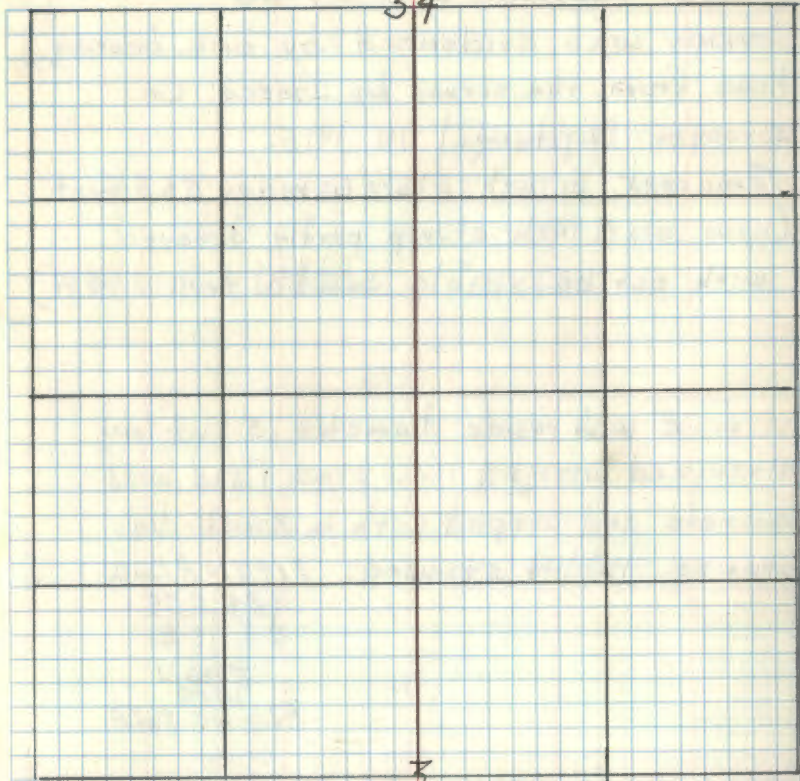
A9-7150-4 by Olesen 1975

Affidavit

Z-15

T147N R26W

34



T146N

ORIG. GOV'T. SURVEY 1876

SETWOOD POST

BALMIE 3 $S 37^{\circ}E$ 64 LKS. = 42.24'

ASPEN 3 $N 2^{\circ}E$ 59 LKS. = 38.94'

Corner Sections 2-3-34-35

Corner was evidenced by one bearing tree from the survey by Itasca Co surveyor Nightengal in 1915.

1. Tamarack 6 inch $S16\frac{1}{2}^{\circ}W$ mag. 51.3 feet
(now on 8 inch stump partly decayed with scribe visible $S22\frac{1}{2}^{\circ}W$ true 51.3 ft.)

Set a 2 inch inside diameter, 5 foot long galvanized wrought iron pipe filled with concrete and capped with a 3 inch dia. bronze tablet stamped:

T147N R26W
S34 S35
S3 S2
T146N
1958
PLS NO 3628

Cedar 7 inch $S27^{\circ}W$ 90.5 Feet

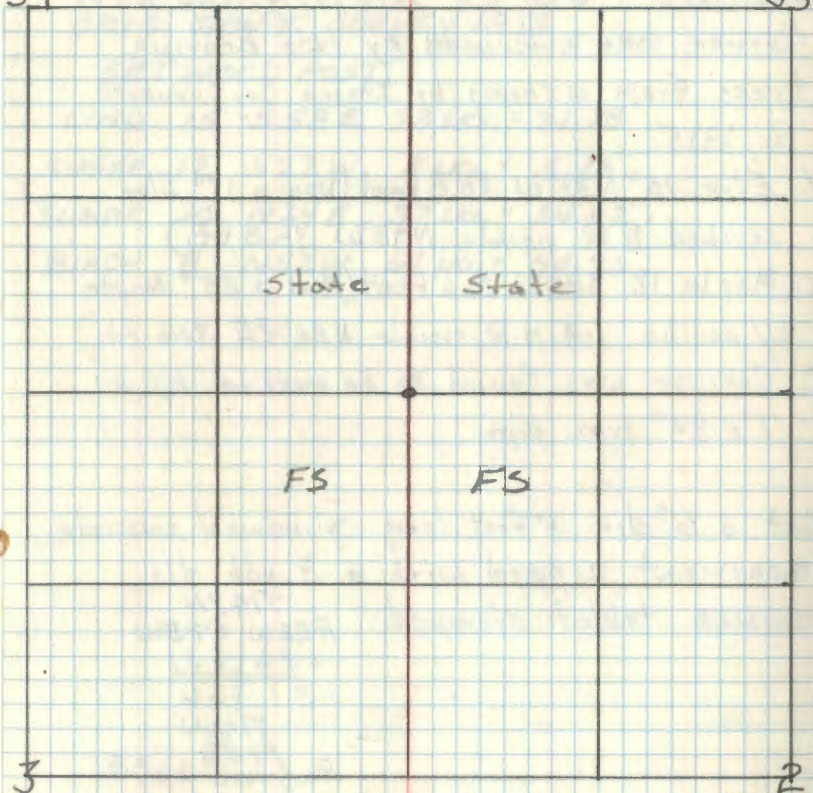
Cedar 7 inch $S55^{\circ}E$ 61.4 Feet

Cedar 8 inch $N40^{\circ}E$ 52.1 Feet

A9-7150-4 by Oksen 1979

34

35



ORIG. GOV'T. SURVEY 1876

SET WOOD POST

CEDAR	12	N33E	69 LKS. = 45.54'
CEDAR	10	S47E	84 LKS. = 55.44'
SPRUCE	6	N12W	200 LKS. = 132.0'
CEDAR	6	S89W	290 LKS. = 191.40'

50 Town Corner

Z-25

Sections 1-6-31-36 T146-147N R25-26W

Corner was evidenced by two bearing trees from a survey by Itasca Co. Surveyor in 1915.

1. Elm 10" N55°W 38.8 Feet (Now a 19" Elm scribed "NR" visible N48°W 38.8 Ft.)
2. Maple 18" S80°E 30.6 Feet (Now a 25" Maple w/ scribe 1-4-NR visible N86½°E 30.6 Ft.)
3. Corner was found to be marked by a 1" x 24" iron pipe

Set a 6" dia. 5 foot long cylindrical concrete monument capped with a 3 inch dia. bronze tablet stamped:-

T147N
R26W R25W
S36 | S31
S1 | S6
T146N
1958
ALS NO 3628

Maple 6 inch N8°W 61.5 Feet

Elm 10 inch N77°W 44.2 Feet

Maple 7 inch N67°E 43.3 Feet

Affidavit

Z-25

ORIG. GOV'T. SURVEY 1876

SET WOOD POST

LIND 15 S58E 33 LKS. = 21.78'

SUGAR 12 S22W 8 LKS. = 5.28'

SUGAR 10 N24E 37 LKS. = 24.42'

BIRCH 8 N52W 61 LKS. = 40.26'

51
 J-9 SECTION CORNER COMMON TO
 SECTION 8 9 16 17

Index No. J-9
 Location 8-9-16-17
 Description Co. Mon. V edge of swamp
 Origin G.L.O. R.S. S.R. SUB. SET

ITASCA COUNTY LAND CORNER RECORD

T. 147 R. 26 PM. 8th.

Reference

Corner Perpetuation Record

5/7/82 Corner Mon.		Found/Data		Set/Data	
Date	Wt.	Size	Bearing	Dist.	Remark
G.L.O. Pine	28"	28"	N10E	40.30'	stp.
" Pine	24"	24"	N57W	21.80'	stp.
5/82 Oak	4"	4"	West	16.13'	
5/82 Oak	8"	8"	N47W	26.48'	
5/82 Cedar	7"	7"	N67E	35.88'	
5/82 Cedar	4"	4"	S22E	19.14'	

1/8/79
 RESET BY BLM IN 1974, ITASCA
 COUNTY HAS TIES

ORIG. GOV'T. SURVEY 1876
 SET WOOD POST

N. PINE 24 N57W 33 LKS. = 21.78'

N. PINE 26 N17E 61 LKS. = 40.26'

SPRUCE 9 S69E 30 LKS. = 19.80'

W. PINE 24 S56W 39 LKS. = 25.74'

BLM RESURVEY 1876

CHAIN

N. 0°08' E., beginning new measurement.

Over Bowstring River and rolling upland.

6.88 Point for the meander cor. of secs. 16 and 17, on the right bank of Bowstring River, at proportionate dist.; there is no remaining evidence of the orig. cor.; not monumented.

17.53 cor. of secs. 8, 9, 16 and 17, perpetuated and re-
 led by P. C. Warner, County Surveyor, in 1926, monu-
 mented with a weathered pine post, 4 x 4 x 36 ins. long,
 loosely set, protruding 30 ins. above the ground; from
 which the remains of the orig. bearing trees:

✓ A pine stump, size indeterminate, bears N. 17° E.,
 61 lks. dist., no mks. visible.

A stump hole, bears S. 69° E., 30 lks. dist.

A stump hole, bears S. 56° W., 39 lks. dist.

✓ A pine stump, size indeterminate, bears N. 57° W.,
 33 lks. dist., no mks. visible.

are no remains of the bearing tree mkd. by Warner
 '26.

the cor. point

Set an iron post, 30 ins. long, 2 1/2 ins. diam., 22 ins.
 in the ground, with brass cap mkd.

T147N R26W
 S8|S9
 S17|S16
 1974

from which

A spruce, 6 ins. diam., bears N. 44° E.,
 33 lks. dist., mkd. T147N R26W S9 BT.

An aspen, 5 ins. diam., bears S. 32° E.,
 15 lks. dist., mkd. T147N R26W S16 BT.

A spruce, 8 ins. diam., bears S. 43° W.,
 66 lks. dist., mkd. T147N R26W S17 BT.

A black pine, 3 ins. diam., bears N. 42° W.,
 60 lks. dist., mkd. T147N R26W S8 BT.

Reset the pine post alongside iron post.

52

J-11 1/4 CORNER BT. SECTIONS 9/16

ORIG. GOV'T SURVEY 1876

SET WOOD POST

SPRUCE 3 N16W 3 LKS. = 1.98'

TAM. 3 SSW 38 LKS. = 25.08'

11/8/79

STEFAN

RESET BY BLM IN 1974 - NOTES

ARE AT IJASCA Co.

From the $\frac{1}{4}$ sec. cor. of secs. 9 and 16, monumented with a tamarack post, 14 ins. long, firmly set, 6 ins. under the surface of a tamarack swamp; from which the remains of the orig. bearing trees:

A tamarack stump, 5' ins. diam., bears S. 5° W., 38 lks. dist., with axe mks. visible in opened blaze.

A spruce stump, 4 ins. diam., bears N. 16° W., 3 lks. dist., no mks. visible.

At the cor. point

Set an iron post, 30 ins. long, 2 $\frac{1}{2}$ ins. diam., 21 ins. in the ground, with brass cap mkd.

T147N R26W

 $\frac{1}{4}$ S9

S16

1974

from which

A spruce, 6 ins. diam., bears N. 18° E., 11 lks. dist., mkd. $\frac{1}{4}$ S9 BT.

A spruce, 6 ins. diam., bears S. 48° W., 16 lks. dist., mkd. $\frac{1}{4}$ S16 BT.

Bury the orig. cor. post alongside iron post.

N. 89°08' W., bet. secs. 9 and 16.

Through a tamarack swamp.

31.50

A dirt road, 25 lks. wide, bears S. 12° E. and N. 12° W.

41.12

The cor. of secs. 8, 9, 16 and 17.

53

L-9 1/4 CORNER BT. SECTIONS 16/17

ORIG. GOV'T. SURVEY 1876

SET WOOD POST

TAM. 6 S46E 25 LKS. = 16.50'

NO OTHER

1/79

STEFAN

RESET BY GLO IN 1974, NOTES
ARE AT ITASCA, CO.

N. 0°13' E., bet. secs. 16 and 17.

Over rolling land, interspersed with tamarack swamps.

31.00 A dirt road, 25 lks. wide, bears S. 54° E. and N. 54° W.

41.68 The local 1/4 sec. cor. of secs. 16 and 17, which is harmoniously related to existing orig. cors. recovered in this resurvey, which I accept as the best available evidence of the position of the orig. cor.; monumented with a squared wooden post, 4 x 4 x 30 ins. long, loosely set, protruding 24 ins. above the ground.

At the cor. point

Set an iron post, 30 ins. long, 2 1/2 ins. diam., 22 ins. in the ground, with brass cap mkd.

T147N R26W

S17 | S16

1974

from which

A tamarack, 6 ins. diam., bears S. 81° E.,
20 lks. dist., mkd. 1/4 S16 BT. 13.2 FTA tamarack, 8 ins. diam., bears S. 83° W.,
25 lks. dist., mkd. 1/4 S17 BT. 16.5 FT

Reset the wooden post alongside iron post.

5-28-03 P. MAIN

FD IRON IN PLACE IN TAMARACK AND ASH
SWAMP. WITNESSED BYTAM (GLO) 7.5" S84E 12.95 TO SPK OLD TAG
AND LOWER SCRIBETAM GLO 9" S83W STANDING DEAD
SCRIBE OVERGROWN

TAM 10" N6E 13.40 TO SPK SCRIBE USABLE

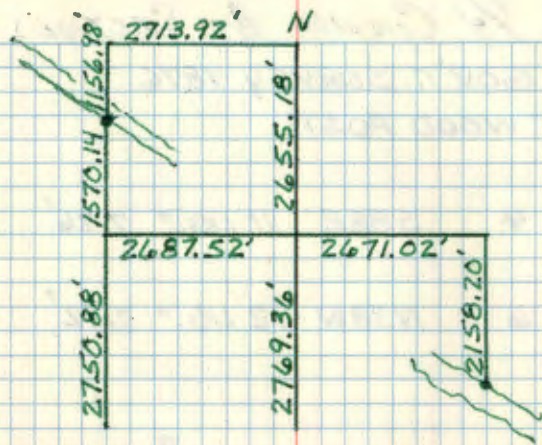
TAM 8" N22W 15.8 SPK STANDING DEAD
SCRIBE USABLE

54

2-11 CENTER 1/4 SECTION 16
 SET BY BLM IN 1974 - Notes
 area of Stone Co.

- N. $0^{\circ}44'$ E., on the N. and S. center line of sec. 16.
 Over rolling land; through moderate timber and undergrowth.
- 22.00 Center of the Bowstring River, 10 chs. wide, course N. 33° W.
- 41.96 Point for the center $\frac{1}{4}$ sec. cor. of sec. 16, at the intersection with the E. and W. center line of sec. 16.
 Set an iron post, 31 ins. long, $2\frac{1}{2}$ ins. diam., 20 ins. in the ground, with brass cap mkd.
 147N R26W
 C & S16
 1974
 from which
 An elm, 13 ins. diam., bears N. $15\frac{1}{2}^{\circ}$ E., 220 lks. dist., mkd. C & S16 BT.
 An elm, 10 ins. diam., bears N. $14\frac{1}{2}^{\circ}$ W., 453 $\frac{1}{2}$ lks. dist., mkd. C & S16 BT.
 This cor. falls in a bog.
 Over bog, then rolling upland.
- 49.00 A dirt road, 25 lks. wide, bears S. 68° E. and N. 68° W.
- 82.19 The $\frac{1}{4}$ sec. cor. of secs. 9 and 16.

- From the $\frac{1}{4}$ sec. cor. of secs. 15 and 16.
 S. $89^{\circ}20'$ W., on the E. and W. center line of sec. 16.
 Over rolling upland; interspersed with bogs.
- 18.50 A dirt road, 25 lks. wide, bears S. $33\frac{1}{2}^{\circ}$ E. and N. $33\frac{1}{2}^{\circ}$ W.
- 40.47 The center $\frac{1}{4}$ sec. cor. of sec. 16.
- 55.00 Center of the Bowstring River, 7 chs. wide, bears N. 22° W.
- 81.19 The $\frac{1}{4}$ sec. cor. of secs. 16 and 17.



5-5

L-13 1/4 CORNER BT SECTIONS 15/16

ORIG. GOV'T. SURVEY 1876

SET WOOD POST

BALSAM 4 S88E 11 LKS. = 7.26'

BALSAM 6 N38W 12 LKS. = 7.92'

1/79
RESET BY BLM IN 1974,
Notes are at Stearns County.
STEFAN

N. 0°08' E., bet. secs. 15 and 16.

Over rolling land; through moderate timber and undergrowth.

11.50 A dirt road, 25 lks. wide, bears S. 72° E. and N. 72° W.

32.70 The 1/4 sec. cor. of secs. 15 and 16, monumented with a squared wooden post, 4 x 4 x 36 ins. long, firmly set, protruding 24 ins. above the ground; not remonumented.

from which the remains of the orig. bearing trees:

A rotted balsam fir stump, size indeterminate, bears S. 88° E., 11 lks. dist., no mks. visible.

A stump hole, bears N. 38° W., 12 lks. dist.

M, N-13 MEANDER CORNER BT. SEC.
15 & 16, NORTH BANK OF RIVER
ORIG. GOV'T. SURVEY 1876
SET WOOD POST

OAK 12 N28W 35 LKS. = 23.10'
Fd. 22" W. OAK AT N28W 23.1' SCRIBE INSIDE
OAK 8 N73E 33 LKS. = 21.78'
NO TRACE AT N73E - 21.78'

1/79

STEFAN

RESET BY BLM, IN 1974, Notes
at Harlan County.

Beginning at the meander cor. of secs. 15 and 16 on the right bank of Bowstring River, monumented with a squared wooden post, 3 x 3 x 36 ins. long, firmly set, protruding 24 ins. above the ground; not remonumented.

from which the remaining orig. bearing tree:

A white oak, 35 ins. diam., bears N. 32° W.,
35 lks. dist., with no scribe mks. visible
on opened blaze. (Record bearing N. 28° W.)

and the remains of an unrecorded bearing tree:

An ash stump, 18 ins. diam., bears N. 1° E.,
62 lks. dist., with reverse scribe mks.
S BT visible on opened blaze.

The right bank of Bowstring River bears S. 56° E. and
N. 56° W.

12-12-73 C. KRAUSE
Fd. ORIG. OAK BT AT N28W 23.1' - WITH FLAT
AREA INSIDE - FAINT SCRIBE VISIBLE
PLACED FSLP & BT TAGS ON ORIG. OAK,
CHAINED SOUTH FROM SEC. COR. 4710',
GOV'T CHAIN WAS 71.20 CHS. OR 4699.20'
OUR LINE FELL 50' WEST OF ORIG. OAK BT
WE FOUND NO TRACE OF OTHER BT

Curt Krause

57 F-17

North $\frac{1}{16}$ sec 10 & 11

From the Itasca County Road Survey
of 1918.

Iron pipe

found Iron pipe in place

Pine stump 16" N34E 56.2'

(Now 16" Pine stump N44E 56.2' scribe visible)

N. Pine 10" S47W 100.4'

To perpetuate this corner I set a 2" x 5"
Gal. Iron pipe with brass Cap Marked

from which bears

Red Pine 7" S84E 33.32'

Red Pine 14" N65E 40.19'

Red Pine 6" S87W 51.35'



Sign post 2" North 1.7' w/sign 54-2 & 54-4

Sign post 2" West 1.9' w/sign 54-2

R4750-4 by Olsen

12/10/79
Ronald Olsen

NOTES BY ITASCA COUNTY (PLAT) LOT 2 SEC 11 1936

N. PINE STR. 16 N34E 56.2'

N. PINE STR. 10 S47 $\frac{1}{2}$ W 100.4'

1326 N+S DISTANCE ON PLAT

58 B-9

North 1/16 sec 4 & 5

From File #66 Itasca County
Court House

Iron pipe
(Iron pipe gone)

Spruce 2" NSBE 43.12' ^{tree}
(Now dead & down spruce 8" N64E
43.12' w/ scribe visible)

Spruce 9" S49E 69.77
(Now spruce stub. 10" S43E 69.77
scribe visible)

To perpetuate this corner I set a 2"
x 2" long Gal. Iron pipe w/ brass cap
12" below road surface Marked
from which bears

P. Oak R. Oak B. Spruce wood
7" 5" 8" 4" x 4" post

NS7W S71W S39E North
54.78 84.70 93.85 35.5'

N 1/16 S5 BT
N 1/16 S5 BT
N 1/16 S4 B.T.

R9-7150-9 by Olesen



10/79
Ronald Olesen

59 C-20

Center East 1/16 sec 2

From Itasca County Surveyors
record 1959

Iron pipe

(found Iron in place)

Poplar 9" S81E 25.3'

(New Aspen 10" S75E 25.3')
w/scar

Poplar 7" S65W 19.70

(New Aspen 9" S82W 19.70)
w/scar

To perpetuate this corner I set
a 2" x 3" Gal. Iron pipe w/ Brass
Cap marked
from which bears.

R. Oak Maple steel post
4" 5" 8"

N10W S23W South
32.96' 37.61' 1.9'

CE 1/16 S2 CE 1/16 S2
OT BT w/signs

89-7150-4 by Olson



2/19/80
Ronald Olson

60 D-19

Center South $\frac{1}{16}$ Section 2

From Itasca County Surveyors
record of 1959

Iron pipe

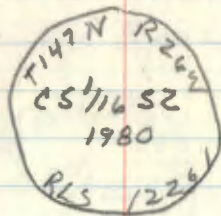
Cedar 9" N 52 E 13.9'

(Now Cedar 11" N 40 E 13.9')
scribe visible

Cedar 8" S 49 E 15.4'

(Now Cedar 8" S 35 E 15.4')
scribe visible

To perpetuate this corner I set
a 2" x 5" Gal. Iron pipe with brass
cap marked
from which bears.



Cedar Steel Post
4" 8"

539W East
16.75 2.5

CS $\frac{1}{16}$ S2 w/sigac
BT

2/19/80
Renard D. Olsen

R9-7150-4 by Olsen

61 D-20

South East 1/16 Sec. 2

From Itasca County Surveyor's record of 1959

Iron pipe
(found Iron in place)

Maple 13" N72W 13.00'
(Now Maple 14" N65W 13.00')
scribe visible

Maple 5" N46E 30.6'
(Now Maple 7" N52E 30.6')
scribe visible

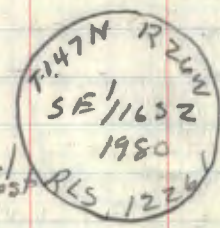
To perpetuate this cor I set a
2" x 5" Gal. Iron pipe with brass
cap marked
from which bears,

Maple Maple steel post steel post
4" 4" 8" 8"

N21W N11E North west
63.62' 15.63' 2.3' 2.2'

SE 1/16 S2 BT SE 1/16 S2 BT w/sign w/sign

R9-7150-4 by Olesen



2/14/80
Rural Co. Olesen

5° east. decl.

March 24, 1983

RC. RD G. Kosenko

Aids - G. Robertson

- B. Ausk

Recovered a 2 1/2 in outside diameter galvanized
iron pipe with a 3 in. diameter brass cap
stamp:



18 inches out of
the ground

This monument will be destroyed by the road
construction.

From which: recovered

Maple, approx 4" grubbed out and broken up

Maple, grubbed out and broken up

Maple, 5 in, N21°W, 63.52 ft to ^{"SE 1/16 S2 BT" w/od spike} 1/2" nail in NE face

Metal sign post,

Metal sign post,

} will be knocked out
by road construction

Established:

W. Oak, 5.9 in, N38°E, 100.38 ft to 1/2" nail in SE
face, double blaze, ser: "SE 1/16 S2 BT", w/od spike

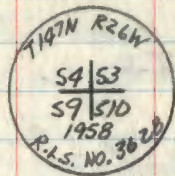
Sugar Maple, 13.2 in, S05°W, ^{165.20} ~~63.52~~ ft to 1/2" nail in
east side, double blaze, ser: "SE 1/16 S2 BT" w/od spike

W/ 1/2" iron pin one shovel height. Mark w/ 1/2" cap. Unknown
what it is. MCJ

T147N R26W Secs 3-4-9-10
cont'd from pg 22

Recovered a 6 in. diameter concrete monument
with a 3 in. diameter brass cap stamped:

up 2.7 ft



The monument was moved from the 1958
position. By whom is unknown at this time.
We recovered an original government survey
bearing tree ^{stump} in the northeast quadrant.

The bearing to that tree stump is $N78^\circ E$
from the present position of the corner

The scribing "BT" is clearly visible on
the stump. We took pictures of the
stump. The ties to the present corner
position were blazed to face our 60d
spike at one time. Then they were
reblazed to face the present corner
position.

March 29, 1983

Clear, cool, breeze

PC. to G. Kosanko

Aides - B. Husk

G. Robertson

Ties to Present corner position:

Spruce 5.7 in, $N09^\circ E$, 24.98 ft to face blaze

Tamarack 6.4 in, $S80^\circ E$, 54.95 ft to face blaze

Power pole, —, $S41^\circ E$, 54.17 ft w/ BT scr

Spruce 5.7 in, $N82^\circ W$, 10.36 ft to face blaze

Original/gout R. Pine stump, $N78^\circ E$, 229.9 ft

We pulled record distance from
the original gout survey tree and
the remaining 1958 trees to a
point where I set a wd spike.

From this point to the present corner
position is $N19^\circ W$, approx 39.00 feet

Recovered 1958 trees:

Tamarack, blaze overgrown

Spruce, dead scr: visible

Power pole

Jack Pine, scr: visible

Red Pine scr: visible (will be cutdown)

T147N R26W

Solar Observation a NW Sec cor 10.

BS = Beartree, 1st monument, FS ~~0~~

Set	Post	H' & "	Z' & "	UT Time
1		00-00-05		
	D	46-37-22	58-30-59	15-22-10
MEAN	D	46-46-08	58-26-20	15-22-45
	D	46-54-08	58-22-15	15-23-17
		46-45-48	58-26-31	15-22-44
	R	227-38-42	302-00-25	15-26-13
	R	227-48-08	302-05-50	15-26-53
	R	227-56-55	302-11-11	15-27-29
		179-59-50		
		47-48-05	302-05-49	15:26:52
2		00-00-00		
	D	47-39-54	56-51-23	15-34-26
MEAN	D	47-52-57	56-44-05	15-35-19
77 50-18-46	D	50-11-43	56-34-28	15-36-28
27 56 30.35"		49-54-51	56-43-19	15:35:24
Time 15:36:59	R	303-34-32	230-27-56	15-37-36
	R	230-40-33	230-40-20	15-38-28
	R	230-59-05	303-50-43	15-39-39
		177-57-51		
		50-42-40	303-42-12	15:38:34

47° 06' 56"
 52° 10' 21"
 Time 15:24:48

March, 29-1983

R. G. Kasinko

James B. Husk

G. Robertson

F-2 S/N

50°F 29.6" Hg

TIME IS UNIVERSAL
COORDINATED TIMEFROM STATION WNW
FT Collins Colorado

T147N R26W

Cont'd from pg 63

March 29, 1983

Set	Post	0' H4	0' Z4	CMT Time
3		00-00-27		
	D	52-02-46		15:43:43
MEAN	D	52-13-11	55-32-15	15:44:24
Hk 52° 13' 35"	D	52-14-31	55-29-32	15:44:48
Zk 55° 28' 55"		52-27-25	55-24-58	15:45:19
Time 15:44:50	R	252-41-35	304-42-00	15:46:14
	R	252-50-45	304- ⁴ 26-36	15:46:51
	R	252-57-15	304- ⁵⁰⁻⁰⁰ 50-50	15:47:15
		180-00-04	?	

4

00-00-01

	D	54-20-46	54-30-41	15-52-33
	D	54-31-11	54-25-35	15-53-12
MEAN	D	54-38-53	54-21-58	15-53-40
Hk 54° 48' 12"		54-30-16	54-26-05	15:53:08
Zk 54-17-34	R	234-55-58	305-46-15	15-54-46
Time 16:54:16	R	235-06-02	305-50-53	15-55-24
	R	235-15-58	305-55-42	15-56-01
		179-57-52		
		55-06-07	305-50-57	15:55:24

T147N R26W

Cont'd from pg 64

Set	Post	H ±	Z ±	CST Time
5		00-00-17		
	D	56-00-12	53-44-49	15:58:43
	D	56-07-37	53-41-25	15:59:10
MEAN	D	56-19-58	53-35-57	15:59:51
H ± 56°08'59"		56-08-59	53-40-44	15:59:15
Z ± 53°40'44"	R	236-36-42	306 ³¹ 34	16:00:54
TIME 15:59:51	R	236-42-34	306 ³⁴ 37	16:01:20
	R	236-48-42	306-37-07	16:01:43
		180-00-07		
		56-42-32		

6

		00-00-19		
	D	58-22-41	52-43-02	16:07:23
	D	58-31-15	52-39-44	16:07:52
MEAN	D	58-38-30	52-36-46	16:08:08
H ± 58°46'52"		58-38-30	52-39-51	16:07-51
Z ± 52°32'45"	R	307-27-49	238-52-46	16:09:10
TIME 16:09:49	R	307-33-58	239-02-12	16:09:44
	R	307-39-13	239-14-46	16:10:29
		180-00-01 →		16
		307-34-20	59-03-14	16:09:48

March 29, 1983

East 1/4 corner Section 19

original BT's

Balsam 10 inch 576 E 18 lks 11.88 ft

N. Pine 20 inch 545 W 12 lks 7.92 ft

7-18-83 Ken Whitehorn, RLS-USFS, and Dan
Harmon, Brainard AVTI intern, found
a 2.5 inch (o.d.) galv IP with a
3 inch diameter brass tablet, ap
1.6 ft, and stamped



BT's recovered

N. Pine 31.7 in 547 W ^{SE} 7.92 ft

To ~~small~~ ²⁹ 20 d nail in northerly face,
no scribe remaining. there is a small
nail in face of what appears to be a
blaze (very decayed & rotten).

See this Book, pp 19

End of balsam snag 7.5 inch N47W 17.50 ft
to 20 d nail in NE face single blaze not
mostly overgrown but some scribing
visible.

End 5' high balsam stump 505 W 36.10 ft
single blaze scribed "5147R26519..."
measured to 20 d nail in east face

End 4.5' pine stump N85°E ~~48.10 ft~~
to 20 d nail in southerly face. scribe BT
still visible. part of blaze in windfall
by stump

No other evidence found

New BT's made

Color 10.7 inch N37W 70.80 ft
to 20 d nail in northwesterly face
double blazed & scribed "520" & "BT"

W. Spruce 19.2 inch N01°W 81.40 ft
to 20 d nail in west face. double blazed
& scribed "519" & "BT"

8' Metal sign post northerly 3.0 ft W 54-2
8' Metal sign west 3.0 ft W 54-2 54-9
all trees have had spike vent in base blaze
BT Tag 54- Grid emanal

67

T147N R26W

1/4 Sec 17-18

Itasca Co. Land Corner Record

1958 W. Pine, 10 in, N54°W, 49.0 ft

1958 Maple, 11 in, S55°W, 47.8 ft

1958 W. Pine, 22 in, S51°E, 62.2 ft

1967 Steel Post, West, 3.6 ft

11-29-84

B. Ausk

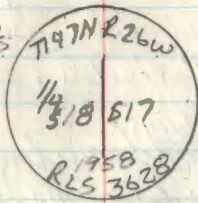
Temp Cloudy 30°F

G. Robertson

Recovered a 2" inside dia. 5° Decl.

Iron Pipe with a 3" BRASS

cap stamped as shown:



From which:

Orig. T. Pine Stmp. N46°W 11.56 ft. to w/60d spike

W. Pine St. Rotted S47°E 60.92 to 60 d spike

A+ Possible Bt Blaze.

Sugar Maple 14" S56°W 48.14 ft to a 16d nail on

NOW A WINDFALL 5/27/03
SE FACE Single Blaze OVER GROWN w/60 d spike

DEAD W. Pine 10.7" N53°W 48.97 ft to a 16d nail on

SW FACE Double Blaze S.E. T147R26 518 BT" w/60d spike

72" Steel Sign Post West 3.8 ft w/54 2 & 54-4

Card filed

67

Established

R. Pine 7.6" S68°E 20.59 ft to 16d nail on
NOW 13" 5/27/03
NE FACE Double Blaze S.E. 1/4 517 BT" w/60 d spikeR. MAPLE 6.7" N28°W 50.24 ft to 16d nail on
NOW DEAD SNAG 5/27/03
SW FACE Double Blaze S.E. 1/4 518 BT" w/60 d spike

8' Steel Sign Post South 3.0' w/54-2

All TREES & Posts A Printed Red

ORIG. GOV'T. SURVEY 1876

SET WOOD POST

J. PINE 6 N48W 18 LKS. = 11.88'

ASPEN 5 S36E 29 LKS. = 19.14'

5/27/03 REMAIN

Fd CORNER IN PLACE AND GPS. ONLY ONE
LIVE BT REMAINS.1984 PINE 13" S68E 20.59 FT SCRIBE ENAIL
OVERGROWN.

See: This book, pg 20

T147N R26W

11-29-84

Cool & Cloudy

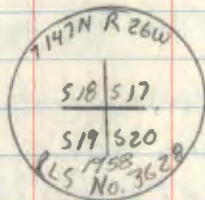
Temp. 30°F

RECOVERED A 2" inside diameter IRON
pipe with a 3" BRASS CAP STAMPED AS
shown.

up 2.0ft.

5° Decl.

from which:



DEAD

JACK PINE 13.5" S28°E 77.42' to a 16d nail on

SW FACE Single Blaze Scr. T147R26 S20" w/60d spike

W. OAK 14.8" S79°W 40.90' to a 16d nail on

SE FACE Single Blaze Overgrown w/60d spike

Down Balsam N60°W 8.78' to 60d spike in

Stump Single Blaze Scr. T147 R26 S18 BT"

Down Balsam N56°E 11.70' to 60d spike in

Stump Single Blaze Scribing visible

72" Steel Sign Post East 3.2 ft w/52-2 & 54-4

Both Balsam ARE BROKE off at ground
LEVEL.

Cord felled

Established:

Cedar 17" S78°E 45.01' to a 16d nail on
NW FACE Double Blaze Scr. S20 BT" w/60d spike

Birch 7.8" N50°E 25.03' to a 16d nail on
SE FACE Double Blaze Scr. S17 BT" w/60d spike

R. PINE 22.5" N37°W 62.13' to a 16d nail on
SE FACE Double Blaze Scr. S18 BT" w/60d spike

8" Steel Sign Post North 3.0' w/54-2

All TREES and Posts Painted Red

Blue Line East to Road from Cor.

See This book, pg 18

69 E-21 (M.C.)

T147NR26W

M.C. between Sec. 1+2 N. side Bowstring
Lake.

Original Gov't Survey

Aspen, 6" , N40°E, 6 links (3.96')

Basswood, 12" , N75°W, 12 links (7.92')

December, 1959

Maple, 12" , N10°E, 39.98'

Basswood, 10" , S68°W, 12.40'

May, 1982

Maple, 12" , N58°W, 34.48'

"x" rock, 1'x1' , N65°E, 3.77'

69
CERTIFICATE FILED

70 E-20 (MC)

T147N R26W

M.C. on E. 1/16 line S. of 1/16 #7

957.80'

1959 Sec. 2 Subdivision

Oak, 16", N12°W, 40.61'

Oak, 8", N20°E, 75.28'

711 E-19/20 (MC)

T147 N R26 W

MC between Sec. 2+11

December 1959 Sec 2 subdivision
on file in Itasca Co. Court House

Oak, 9", N13°E, 70.10'

Oak, 12", N22°W, 76.40'

CERTIFICATE FILED

NOTES OF ORIG. GOV'T. SURVEY 1876 B.C. BALDWIN

SET POST

SPRUCE 6 N48W 52 LKS. -34.32'

W. PINE 6 N30E 54 LKS. -35.64'

50.00 CHS. = 3300' TO MC

NOTES BY ITASCA COUNTY (PLAT) LOT 2 SEC. 11 1936

Fd. GOV'T. PINE 18 S86W 46.2'

" GOV'T. PINE 16 N9W 39.6'

N. PINE 14 N18W 45.9'

} TIES TO MC
SOUTH BET. 10+11

QUARTER CORNER BETWEEN SEC'S. 2+3

NOTES OF ORIG. GOVT. SURVEY 1876 B. C. BALDWIN
SET POST

MAPLE 8 S68W 29 LKS. -19.14'

LIND 8 N60E 19 LKS. -12.54'

ITASCA COUNTY ROAD (INGER) SURVEY 1918
BY P. C. WARNER

MAPLE 14 S74W 95.0'

PINE STP. 30 S85E 48.4'

SECTION CORNER COMMON TO SECS. 2-3-10-11

NOTES OF ORIG. GOV'T. SURVEY 1876

SET POST

MAPLE	6	S25E	10 LKS.
IRONWOOD	4	N2E	10 LKS.
MAPLE	4	S47W	37 LKS.
BASSWOOD	10	N40W	39 LKS.

NOTES OF ITASCA COUNTY ROAD (INGER) SURVEY

1918 BY P.C. WARNER

FOUND GOV'T. MAPLE

NEW BT'S.

MAPLE	18	N71W	57.7'
MAPLE	14	S49W	64.8'
TWN. B. WOOD	15	S33E	46.6'
OAK	10	N69E	69.5'

E-11 QUARTER CORNER 4-9
 ORIG. GOV'T. SURVEY 1876
 SET WOOD POST

ASPEN 8 S45E 29 Lks. = 19.14'

ASPEN 6 N23W 13 Lks. = 8.58'

Index No. E-11

ITASCA COUNTY LAND CORNER RECORD

Location N. 1/4 Sec. 4-9

T. 147 R. 26 P.M. 5th

Description 1/4 I.P. 80' N. of S. of # 35 and 16' W. of E to Omerod Shores.

Origin G.L.O.

R.S. 121 S.R.

SUB.

SET

Reference

Corner Perpetuation Record

5-17-82 Accepted 1" I.P. 14.66' S.Werly
 of Apprx. † 4-9 to be true location of †
 and rewit.
 Book 51 Pg. 43, 44

5-17-82					
Corner Mon.					
Found/Date					
Date	Wit.	Size	Bearing	Dist.	Remarks
5/82	Oak	12"	West	23.77'	
5/82	N. Pine	9"	N60E	68.55'	
5/82	X Rock	1 1/2 x 1 1/2	S80E	46.48'	

5/17/82 ITASCA COUNTY

OAK 12" WEST 23.77
 R. PINE 9" N60E 68.55

QUARTER CORNER BET. SEC'S. 26 & 27

NOTES OF ORIG. GOVT. SURVEY 1876

SET WOOD POST

TAM. 4 S79W 22 LKS. = 14.52'

TAM. 4 N⁶⁷69E 35 LKS. = 23.10'

11-2-93 RM & CK

CHAINED SOUTH FROM FR # 3229 AND MARKED
STATION 300'S THEN CONTINUE SOUTH TO SEC. COR.

TOTAL OF LINE RUN WAS 3056'

ON WAY BACK NORTH WE GO TO STATION 300'S
AND MEASURE 117' SOUTH OF 300 WHICH WOULD
BE 417' SOUTH OF ROAD AND SEARCH 1/2 HR.

FOR 1/4 COR. - OUT OF TIME - MORE SEARCH

ON 11-4-93 IS PLANNED - SEARCH AREA FALLS
IN TAM. SWAMP - WITH HIGH LAND RIDGE JUST TO
NORTH OF AREA - NO TAG AT THIS TIME

NORTH BET. SEC'S. 26 & 27

792' 12.00 CHS. LV. SWP. NW
1518' 23.00 " ENT. TAM. SWP
40.00 " 1/4 COR.

59.68 " MC

CORNER TO SECTIONS 7-8-17-18
 NOTES OF ORIG. GOV'T. SURVEY 1876
 SET WOOD POST

J. PINE 8 S65E 78 LKS. = 51.48'

J. PINE 5 S1W 64 LKS. = 42.24

J. PINE 8 N59W 64 LKS. = 42.24

874 CCC NOTES BY BALKE 1937
 SET NEW MAPLE POST 24" HIGH
 MAY BE SCRIBED?

Fd. J. PINE 10 S65E 78 LKS. SCRIBED

Fd. J. PINE 10 N57W 64 LKS. SCRIBED

CORNER IS ON HIGHLAND - ABOUT 2 CHS. EAST OF GRASS
 MEADOW AND 1 CH. SOUTH OF FIREWAY NW-SE

IMPROVED TABLES

384 50%