

CORNER  
RESTORATION  
T146N, R26W



MINING  
TRANSIT BOOK

No. 384 F

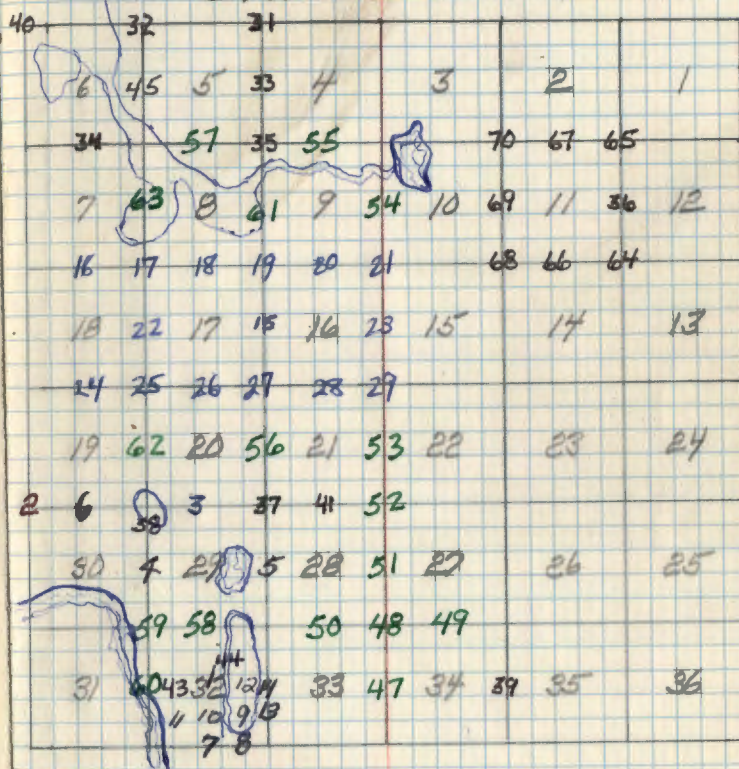
Page 1

CORNER RESTORATION T146R26

USFS

Book #1

T146N, R26W, 5<sup>th</sup> P.M.  
 ITHASCH COUNTY



SEE BK#2 146-25

NUMBERS NEAR CORNERS REFER  
 TO PAGE IN BOOK ON WHICH NOTES  
 TO THAT CORNER ARE FOUND

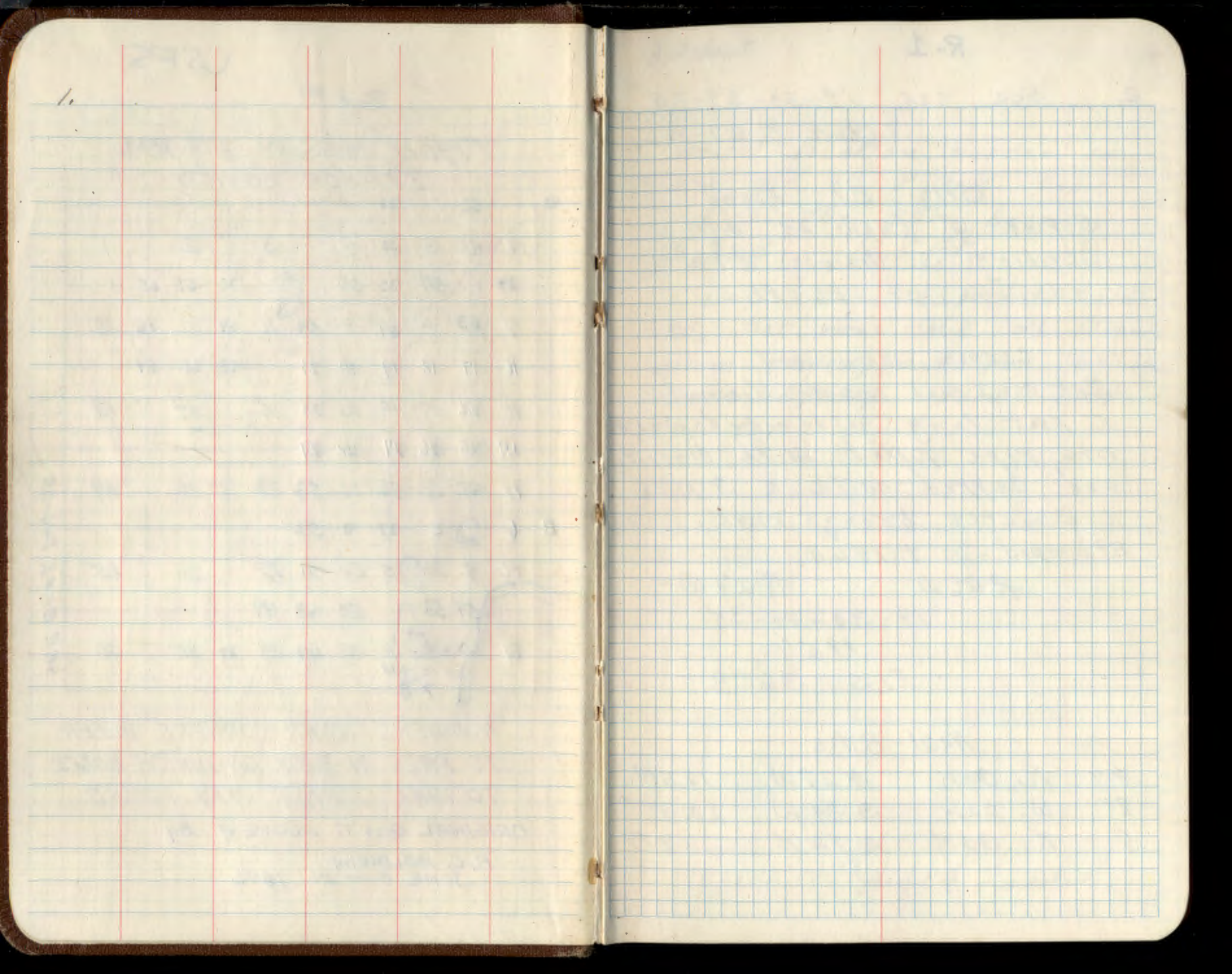
ORIGINAL GOV'T SURVEY 84

B. C. BALDWIN  
 JUNE 8 - 24 1876

272

10

1-8



R-1

2. Sec COR. 19-30-24-25  
T146N R27-26

Orig. B.T. Found  
R. Pine 6" (now 24" with  
scribing S. Visible) N9W  
44 links or 29.0 ft.

## Corner monument

Set a 2 inch inside diameter  
5 foot long galvanized wrought  
iron pipe filled with concrete  
and capped with a 3 inch  
diameter bronze marker

Stamped -27 + 146N 26  
R26W R27W  
19-30-24-25  
1968  
RLS 3628

## New B.T.s

9"	R. Oak	N27W	12.5 ft.
8"	W. Oak	S34W	20.3 ft
8	R. Oak	N72E	27.7 ft.

Affidavit

metal location poster is  
on a 9" R. Oak from  
which the cor. bears  
S 27 E 12.5 ft.

I blazed line East to old  
rd. that runs N.E. of Winnie  
dam tower, and put tag on  
tree approx 500 ft East  
of cor.

8-10-58 J. L. Lunsford

R-7

3 Quarter Corner Sections 20-29

Notes of original Govt. survey of 1876

Jack pine 12" N65°E 13 Lks or 8.58 Feet

(now a stump hole of decayed wood N65°E 8.58')

N. Pine 18° S50°W 41 Lks. or 27.06 Feet (now

a 27" dia. red pine snag with scribe "1/4 S

BT" visible S50°W 27.06 feet.)

Found a Fallen square post at corner, not

original. Also F.S. location poster put up

in 1938 on a J. pine N-E of corner.

Set a 6 inch dia., 5 foot long cylindrical

concrete monument capped with a 3 inch dia.

bronze tablet stamped:-

T146N R26W

1/4 S 20

4 S 29

1962

RLS NO 3628

Jack pine 10" S44°E 14.7 Feet MKD 1/4 S29 BT

Jack pine 10" S20°W 18.0 Feet MKD 1/4 S29 BT

Red pine 11" N79°W 33.6 feet MKD 1/4 S20 BT

Steel sign post 72" long set 24" in ground with

signs 54-2 & 54-4 due East 4.6 feet.

10-31-62 G.H. McDonald

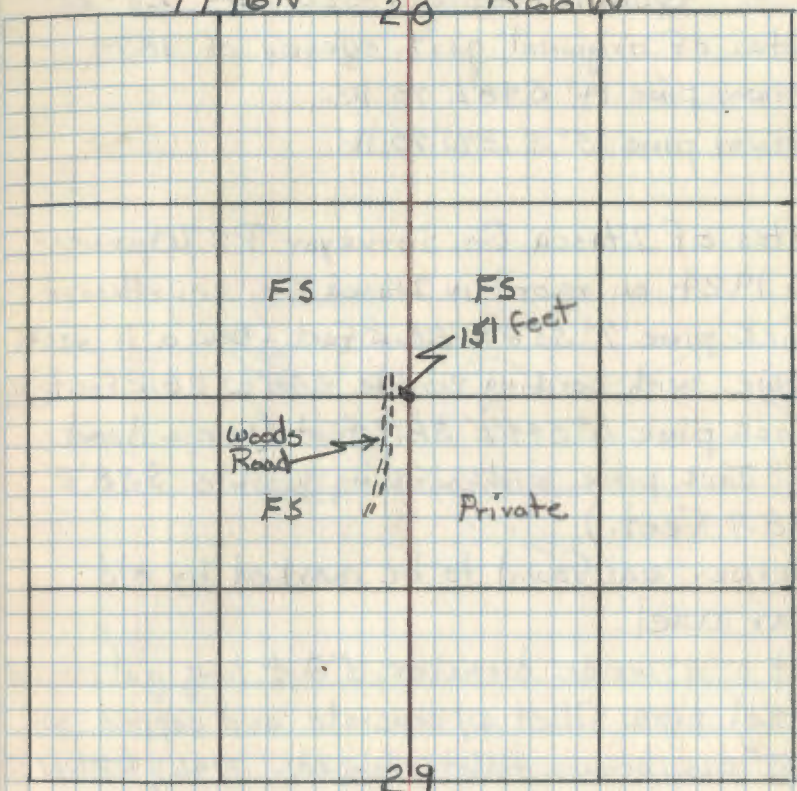
Affidavit RHW

6-13-63  
ok

T146N

20

R26W



T-5

4. Quarter corner sections 29-30

Notes of original gov't. survey of 1874

Norway pine 14" S48°E 75 lks.

Norway pine 15" S 18°W 70 lks.

Notes of Itasca Co. Surveyor P.C. Warner  
in 1924 on record in Itasca Co. courthouse.

Jack pine 7" S52°W 28.2 Feet (Now a 11" Jack  
pine with scribings visible S58°W 28.2 Feet)

Jack pine 6" S44°E 38.9 Feet (Now a dead  
7" Jack pine with scribings visible S38°E  
38.9 Feet.)

Corner was found to be marked by old  
car axel.

Set a 2" inside diameter, 5 foot long galvanized  
steel pipe filled w/ concrete and capped w/  
a 3" dia. bronze tablet stamped: T146N R26W

S 30 | S 29  
1958  
RLS NO 3628

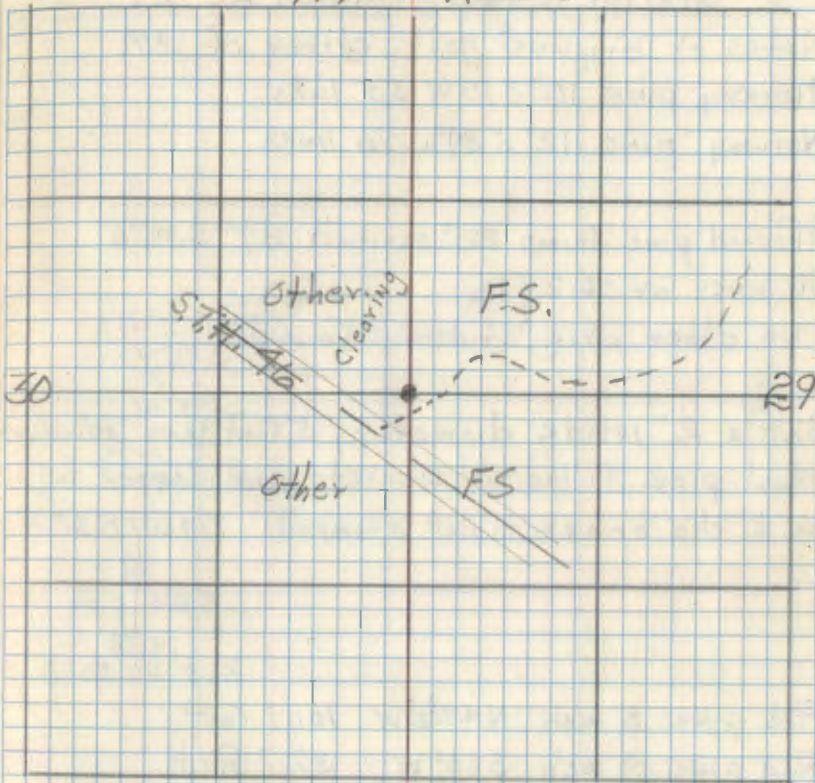
Red pine 11 inch S41°W 27.6 Ft.

White pine 10 inch S26°E 35.2 Ft.

Red pine 12 inch S72°E 58.2 Ft.

Affidavit

T146N R26W



Aug 1936 BAIR, CLL FIELD NOTES

J PINE 9" S60W 43 1/2

J PINE 7" S36E 59.8

T-9

5. Quarter corner sections 28-29

Notes of original govt. survey of 1874

① Norway pine 10" S 10° W 55 links

② Norway pine 12" S 34° W 76 links

③ Found pine stump 22" scribed BT S 34° E

76 links or 50.2 Ft.

No other orig. evidence found.

Set a 2" inside diameter, 5 foot long galvanized steel pipe filled w/ concrete and capped w/ a 3" dia bronze tablet stamped: T146N R26W

1/4  
S 29 | S 28

1958  
RLS NA 3628

Red pine 8 inch N 47 1/2° W 104.1 Feet

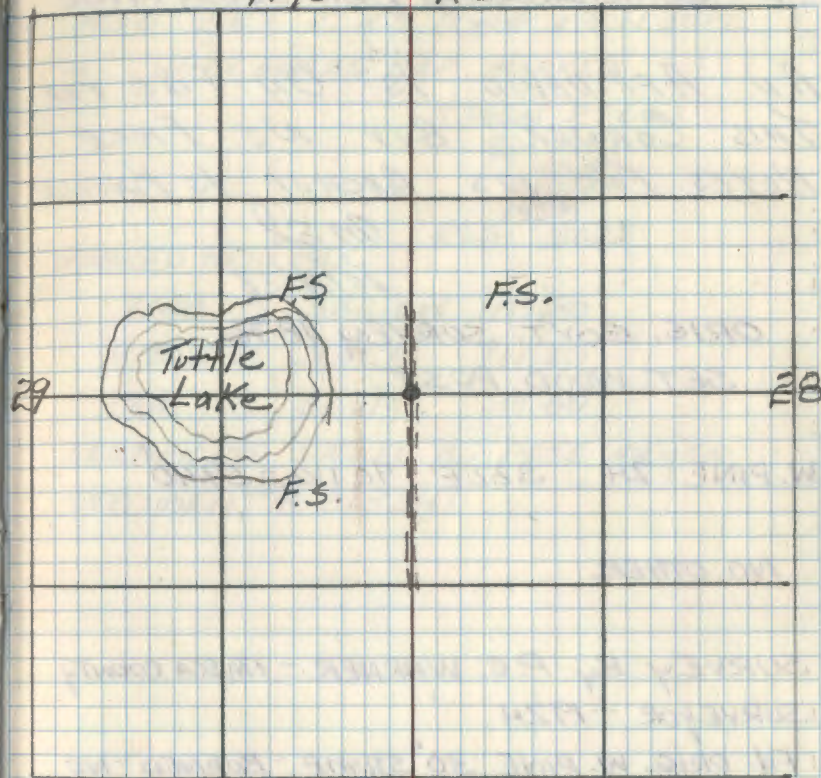
Red pine 9 inch S 60° W 37.7 Feet

White spruce 12 inch S 60 1/2° E 60.4 Feet

Affidavit

T146N

R26W



6 R-3

6 QUARTER COR. BET. SEC'S. 19+30

AN AFFIDAVIT IS ON FILE FOR THIS CORNER, BUT NO FIELD NOTES FOR ITS BACKUP IS KNOWN.

MEL

10/11/78

ORIG. GOVT. SURVEY 1876

SET WOOD POST

W. PINE 24 S22E 90 LKS. = 59.40'

NO OTHER

SURVEY BY P.C. WARNER - ITASCA COUNTY SURVEYOR - 1924

FD. ORIG. W. PINE 30" STUMP - BURNED - NO SCRIBE AT S22E - 59.4'

MARKED NEW B.T'S.

N. PINE 14 <sup>MAG.</sup> S37E 93.0'

1958 NOW 22" WITH SCRIBE VISIBLE S34E 93.0'

N. PINE 9 N73E 101.3'

1958 NOW 18 WITH SCRIBE VISIBLE N78E 101.3'

6

JOE LAUSCHE + JERRY BOHN  
1958 SET 2" X 5' LONG IRON PIPE  
WITH BRASS CAP MARKED

T146N R26W

1/4 <sup>519</sup>  
530

1958  
RLS 3628

MARKED NEW B.T'S.

TAM. 5 S82 1/2 W 111.80'

R. OAK 8 S35E 111.20'

TAM. 8 S67 1/2 E 30.60'

CERTIFICATE SIGNED BY PETE MEYER  
DOCUMENT # 218241



Z-7

R26W  
T145N T46W

7. Quarter Corner Sections 5 & 32

Notes off Plot of Survey of Sec. 32 by  
Sam Benzing, 1959. Corner monumented  
by 1" iron in road. From which bear:

Witness Monument, West 33.00'  
found in good condition

Oak 5" S33°W 55.03'  
found in good condition with scribe visible

Oak 6" N41°E 104.00'  
found in good condition with scribe overgrown

Oak 6" N83°W 66.90'  
no evidence of time of search (in plantation)

4/24/79 M. Hayes & J. Schoenover

To further perpetuate this corner I  
established the corner position in the  
blacktop road and created the following  
bearing tree:

R. Oak 5" S55°E 69.60' Mkd 4455 BT

M. C. Hayes

R9-7150-4 by J. Schoenover 4/24/79

**CERTIFICATE FILED**

9/15/81

#347784

on  
M.C.  
R.S. # 18261

RESURVEYED BY B.C. BALDWIN 1871  
~~RESURVEYED~~  
SET WOOD POST

J. PINE 8 N40E 50 LKS = 33.0'

N. PINE 16 S52E 56 LKS = 36.96'

Z-8

8 E 1/4 b/w. secs. 5 & 32

Notes of Plat of Survey of Sec. 32 by  
Sam Benzing, 1959. Corner monumented by  
a 2" x 5' galvanized pipe filled with concrete  
and capped with a standard marker.

Land monument stamped

From which bear:

	T146N	
186W	E46	4814
	S32	
	35	
	T145	

Cedar 7" N55°E 48.80'

Now 14" cedar at bearing & dist. with scribe overgrown

Cedar 9" ~~N~~32°E 44.48'

Now 13" cedar at bearing & dist. with scribe overgrown.

Birch 9" S72°W 55.45'

Now a Birch stump at bearing & dist. with scribe visible

4  
1/24/79

M. Hage & J. Schanover

To further perpetuate this corner I  
established the following:

Cedar 12" S49°W 56.99' Mid. E 1/4 55-B+

Steel Sign Post 3.9' West of monument

M. C. Hage

R9-7150-4 by J. Schanover, 4/24/79

C CERTIFICATE FILED

4/15/81 #347785

M.C.S.  
12261

4-8

1. Sec. 32

9. S. M. C. on South Shore Little Ball Club  
Notes off Plat of Survey of Sec. 32 by  
Sam Benzing, 1959, Corner monumented by  
a 2" x 5' galvanized pipe filled with concrete  
and capped with a standard marker.

Found pipe leaning south due to ice movement. Is stamped:

146N R20W

MC-532

#2214

From which bear:

Elm 8" S23°E 172.20'

Found with scribe overgrown 19"

Birch 8" S25°W 162.20'

(in pit. yard) Found with scribe overgrown 15"

Ash 5" S10°W 280.30'

No evidence (believe red building has destroyed it)

The monument needs to be righted and  
a new B.T. made. 1/24/79 M.C. Hayes

A9-7150-1 by J. Schooner 1/24/79

4-7.

10. CENTER SOUTH  $\frac{1}{16}$  SEC. 32

Notes off Plot of Survey of Sec. 32 by  
Sam Benzling (~~1959~~) 1959. Corner monumented  
by a 2" Iron pipe with brass cap.

Found Pipe

From which the following bear:

Oak 6" S13W 12.88'

Now decayed <sup>oak</sup> stump S19W 12.9'

Oak 6" N58°E 96.73'

Now Oak 10" N73°E 96.73'

N. Pine 8" N20W 39.21'

Now N. Pine stump 12" N12°W 39.2'

11/78

Ron Olesen

To further perpetuate this cor.

I created the following B.T.S.:

R. Pine 16" N70°W 39.25'

R. Pine 9" S3°W 67.44'

4" x 4" x 8" wood post west 1.5'

marked by M. S. A.

R9-7150-W by Olesen

OH MS  
9/15/61  
# 387786  
CERTIFICATE FILED

4-6

11. South West  $\frac{1}{16}$  SEC 32

Notes of plat of Survey by Sam  
Benzing (~~1959~~) 1959. Corner monument  
a 2" iron pipe with brass cap.

found pipe

From which bear:

J. Pipe 9" S45°E 12.68'  
~~Oak 5" N32°E 25.52'~~ J. Pine stump cut flush with ground  
10" S26°E 12.68'

Oak 5" N32°E 25.52'

Oak 8" N50°E 25.52'

Birch 5" N50°W 19.33'

Birch 7" N45°W 19.33'

11/78

Ron Olsen

To further perpetuate this corner  
I established the following:

R. Pine 8" S4°E 34.60'

W. Oak 7" S33°W 40.40'

8" steel Sign post East 3.0'

" " " " North 2.9'

entered by M.P.O.  
 entered by M.P.O.

R9-7150-4

CERTIFICATE FILED  
 on 11/15/81  
 R.H.S. 12/15/81  
 91561 #347787

6-4-96 RM-CK

Fd. 2" BRASS CAPPED PIPE 1" IN PLACE  
 IN THICK BRUSH + WINDFALLS

R. OAK 8 N50E-25.52 IS NOW BROKEN OFF STUB  
 5" HIGH

BIRCH 7 N45W-19.33 IS NOW DEAD SNAG

R. PINE 8 S4E-34.60' IS NOW DEAD SNAG  
 WAS HIT BY LARGE N. PINE WINDFALL

W. OAK 7 S33W 40.40 IS NOW BROKEN OFF  
 SNAG WAS HIT BY LARGE N. PINE WINDFALL

MARKED NEW BT's.

N. PINE 18 S7W 42.88' SPK + TAG

W. OAK 7 NBE 46.57' MKD 532 BT

W. OAK 6 S77W 64.94' MKD 532 BT

8' STEEL SIGN POSTS EAST 3.1' + NORTH 2.95'

CORNER IS APPROX 150' WEST OF WOODS TRAIL  
 NW-SE

LINE TO STANDARD NORTH + EAST WAS REPAINTED  
 TODAY - SHOULD REPLACE CEDAR POSTS AS  
 THEY ARE ROTTING OFF - NO SIGNS OF CEDAR POSTS

12. CENTER WEST  $\frac{1}{16}$  Sec. 32

X-6

Notes on plot of survey of Sec. 32  
by Sam Benzing (~~the~~ Co.) 1959. Corner  
monumented by a 2" Iron pipe with  
brass cap. found pipe w/cap bent badly by  
dozer. Bottom of pipe still in place.

From which bear:

N. Pine 11" N82°E 34.18'

Now N. Pine 17" East 34.18' surveys  
usable

J. Pine 6" West 21.18'

Now J. Pine 8" N83°W 21.2'

Oak 5" S12°E 24.54'

11/72 Ren Olesen

To further perpetuate this corner  
position I replaced Co. monument with a  
3' long, 2" dia. pipe w/brass cap 2" below  
ground. From which bear:

N. Pine 14" N5°W 36.30'

N. Pine 20" S05°W 55.47'

marked by M.P.H.

R9-7150-4 by R. Olesen

RLS. 12261

CERTIFICATE FILED

9/15/81 # 387788

Y-9

13. SOUTH  $\frac{1}{16}$  COR TO SECS 32 & 33

NOTES OFF PLAT OF SURVEY OF SEC 32  
by Sam BENZING 1959. CORNER MARKED  
by a 2" IRON PIPE W/BRASS CAP.  
found iron in place

MAPLE	3"	S55°E	35.70'
Rotten stump	4"	S55°E	35.70' Scribe visible
BIRCH	7"	S5°W	9.42'
	10"	S5°W	10.42'
R. OAK	3"	N82°W	26.00'
	6"	N82°W	26.00'

To perpetuate this corner I cut  
new B.T.

BIRCH 10" S42°E 17.15'  
MKD  $\frac{1}{16}$  533 BT

SET 8' long steel sign post North 3'  
w/signs 542, 544

1979 1/5/ Ron Olesen  
entered by MEH.

199-7/50-4

affidavit prepared

P-X

X-9

14. QUARTER COR. SECS 32:33

NOTES OFF PLAT OF SURVEY OF

SEC. 32 BY SAM BENZING, 1958.

CORNER MONUMENTED BY IRON PIPE  
W/ BRASS CAP. Found pipe

B. OAK	7"	S48°E	4.14'
"	10"	S48°E	4.14'
B. OAK	4"	N19°E	25.98'
"	5"	N19°E	25.98'
<del>B. ASPEN</del>	5"	N48°W	12.50'
"	8"	N48°W	12.50'

I set 8' long steel sign post  
South 2.4' and East 3.4'

by Ron Olesen  
introd by M.C.H.

89-7150-4



L-9

## 15. Quarter Corner Secs 16 &amp; 17

B.C. Baldwin set the original corner in 1876. Witnessed by:

Norway Pine 12" WEST 210ks (138.6')  
 8/20/81 found Norway Pine 25" WEST 138.6'

In 1916 A.W. Nelson, while doing a road survey for Itasca County, found the Norway Pine, which was by then 16", and set:

Tamarack 12" N59°E (Mag.) 29.6'  
 8/20/81 found Tamarack stump 11" N64°E (True) 29.6'

On August 20, 1981 R. Oleson and I found the Norway Pine, now a 25", and a sheared off Tamarack stump that fit the bearing and distance of the 1916 County Survey. We set a 3" x 2" galvanized iron pipe with a brass cap 1' EAST of the centerline of Itasca County Road 37, down 0.9", the cap was marked:

THIN IRON  
 49  
 5.17 x 5.16  
 1981  
 RES 14697

We cut 4 new Bearing Trees:

Tamarack 8" N58°E 75.57'

Tamarack 11" S81°E 79.45'

Norway Pine 14" S57°W 63.40'

Norway Pine 14" N61°W 72.05'

8/20/81 R.L. Whitehorn & R. Oleson

8/20/81 R9-7150-4 R.L. Whitehorn

Cert filed 12-14-82 Itasca Co Courthouse

Doc # 355059 ~~14697~~

Aug 1936 Balke  
 Circa 1936 CCC Field Book

N Pine 24 in WEST 210 chs

Tam 10 in N54°E 46 3/4 kks

10/9/34 Form 874-9 W. E. Fuller

BT ON RT SIDE OF ROAD GOING NORTH - 15 FT FROM  
 TELEPHONE POLE EXACTLY 40 CH. 30 LINKS NORTH OF  
 CORNER

(16)

J-2/3

Witness Corner to the  
South 1/4 corner of Section 7

June 1876 B.C. Baldwin, Deputy Surveyor, set  
a post 8.20 chs west of 1/4 corner:

Tam 8 in N 88 W 150 lbs 99.00 ft

Tam 6 in S 86 W 140 lbs 92.40 ft

(33.00 chs East of Rge line - 91.70 chs across  
South line of Section 7)

West Random 7 1/2 18

30.00 Enter pond

48.70 leave pond set post for WC

65.00 leave Tam swamp

85.50 Enter Tam swamp

91.70 Intersect Rge line at cor 7 1/2-17-17

Circa 1938 CCC field book by Haberk

made Tam Zin S 50 W , 26 chs 17.16 ft

(16)

Southwest Corner of Section 7

7/8	N 69° 2'
18/17	

June 1876 B.C. Baldwin set post (80.00 chs North of SE-1/4)

Pine Stub	24 inch	S 53° E	33 lks	21.78 ft
Pine Stub	28 inch	N 7° E	34 lks	22.44 ft
Pine Stub	20 inch	N 32° W	113 lks	44.58 ft
Pine Stub	24 inch	S 82° W	247 lks	163.62 ft

North between 17 & 18

534.6	8.10	Intersect Reservation boundary line
1650.0	25.00	leave Tam swamp
2640	40.00	Enter Tam Swamp and Set Post for 1/4 Cor
3003.0	45.50	leave Tam swamp
5290	80.00	set corner

Circa 1938 CCC Field Book by Heberle

Aspen	6 in	N 82° W	103 chs	1.98 ft
Aspen	8 in	N 30° E	112 chs	7.92 ft

1967 Land Corner Card by Don Light, TMA at  
Outfoot snow on ground - could not find  
corner - could find all pine stumps.  
Possibility of relocating corner from pine stumps "

7-13-83 Whitburn & Harmon, chained west from  
corner fence post  $\frac{817}{714}$

200 ft enter swamp  
 1170 ft leave swamp  
 1800 ft Y in Woods Rd N 45° E NORTH of 545' W  
 2000 ft Cut Rd N 45° W 50 ft N of Y  
 2200 ft Corner Swamp  
 2640 edge of swamp (see pp 18)  
 3100 enter swamp  
 4600 Leave swamp  
 5280 corner position  
 SOUTH  
 600 ft Rd N 80° E  
 1250 ft Enter swamp  
 2000 ft leave swamp  
 2350 ft X road E-W  
 2640 see pp 22  
 3150 Enter swamp  
 4588 E Rd 653' E of 18/20

(18)

J-7

South Quarter Corner, Section 8

N 346'

June 1876 B.C. Baldwin set post (40.00 chs East of SW cor sec 8)

TAM 5 in N 35° E 11 lks 7.26 ft

TAM 6 inch S 80° W 45 lks 29.70 ft

East Random 8<sup>1</sup>/<sub>2</sub> 17

25.00 Enter Tam Swamp

40.00 Temp 1/4

47.00 Leave Swamp

80.00 Intersect Corner  $\frac{819}{1716}$

DEC 1937 BALKE: i DECKHAUS CCC FIELD BK

MAP SHOWS BLACKENED IN DIAMOND.

TAM 5" N 35 E 11 lks 7.26 ft

TAM 6" S 80 W 45 lks 29.70 ft

N 692'  
W 375'

(18)

(A)

J-9

8/19 Southeast Corner of  
17/16 Section 8

June 1876 north between 16 & 17 (orig) - B.C. Baldwin

15.00 enter Tom swamp

23.00 leave same

40.00 1/4 cor

57.80 Reservation boundary (by calculation)

65.00 Enter Tom swamp

76.00 leave same

80.00 Set post for Section Corner

8-9-16-17

Aspen 5 inch N15E 13 lbs 8.58 ft

Aspen 5 inch N41W 38 lbs 25.08 ft

Aspen 4 inch S65W 45 lbs 29.70 ft

Aspen 5 inch S56E 60 lbs 39.60 ft

June 1916 page 9 SURVEYORS RECORD, Itasca County

Road # 115 by A. W. Nelson

Birch 12 in N47E 51 ft

Birch 10 in S53E 64.2 ft

Poplar 10 in S61W 66.5 ft

Spruce 10 in N54W 72.3 ft

(B)

Aug 1936  
~~1937~~

ccc Field Book by Balke

Aspen Stub S54W 82 lbs 54.12 ft

10-9-1934

~~to Balke~~ (USFS 874 (WILEY FULLER, ~~no date or signature~~))

"Woodstake in place in good condition  
2 1/2 ft above ground, No marks.

down Aspen 13 in N42W 83 lbs 54.78 ft  
scribed T146N R26W Sec 8 BT

7 ft Aspen sprig 12 in S52W 82 lbs 54.12 ft  
scribed T146N R26W Sec 17 BT

6 ft Aspen Stub (B.M) 11 in S64W 61.94 lbs 75.84 ft  
scribed T146N R26 W SEC 16 BT

"Beaking G.O. Corner not scribed 38 L.

South of fence Cor post. Set to left  
of rd.

7-12-83 Ken Whitehorn & Dan Harmon, Brainard NITE  
Intern chained north 2692 from 1/4 corner  
to 16 & 17 end ~~EW~~ fence line E & N at  
2921.

(20)

J-11

South Quarter Corner Section 9 ~~11~~

June 1876 BC Baldwin

East Random between 9 &amp; 10

3.50 enter swamp

11.00 leave same

26.00 enter swamp

35.75 Res. Boundary (by calculation)

40.00 turn by cor

79.60 Intersect 50 lks north of cor

West true

39.80 Set post for by cor

Tam 4 inch S 8 E 24 lks 15.84 ft

Tam 4 inch N 4 E 90 lks 59.40 ft

21-6

(20)

(21)

J-13

9/10 Southeast corner of  
16/15 Section 9

June 1876 B.C. Baldwin

north between 15 &amp; 16

10.00 leave swamp

17.00 Enter swamp

40.00 Set 1/4 cor

59.00 Enter swamp

80.00 Set post for Section Corner

9-10-15 &amp; 16

Tam 5 in N 57 W 10 lbs 66.0 ft

Tam 5 in S 79 W 79 lbs 52.14 ft

Tam 5 in S 85 E 37 lbs 29.42 ft

Tam 5 in N 83 E 87 lbs 57.42 ft

Circa 1938 ACC field book Aug 1936 by Balke

Aspendeal 10 in N 29 E 156 lbs 32.29 ft

7-12-83 Ken Whitehorn and Don Harman, Braintree  
AVT I intern, chained north from  
1/4 corner 2640 falls  $\pm 70$  ft south  
of fence corner (N & E)

(22)

(22)

L-5

## East Quarter Corner of Section 18

June 1876 B.C. Baldwin (see pp 17)  
 Set post at edge of swamp for 1/4 cor  
 Tam 5in N59W 29 1/2ks 19.14ft  
 Spruce 5in N43E 13 1/2ks 8.58ft

Circa 1938 CCC field Book by Haberle  
 dead Tam 5in N61W 29 1/2ks 19.14ft  
 rotten spruce Stump 5in N45E 13 1/2ks 8.58ft  
 Spruce 7in N41W .07 9.62ft

1967 Land Corner Card by Don Light, TMA  
 Cutoff R.D.,  
 "Could not find post or BT. Could  
 possibly find if one looked longer

DEC 1937 BALKE & DICKHAUS

Fd ORG BTs

TAM DEAD 5" N61W 29ch

ROT. SPRUCE STP N45E 13ch

Yellow TAG ON 7" spruce N41°W .7ch

(23)



(23) L-13

East Quarter Corner, Section 16

June 1876 B.C. Baldwin (see pp 21)

Set post for  $\frac{1}{4}$  cor

Tam 3 in N 17 E 15 lbs 9.90 ft

Tam 5 in S 17 W 27 lbs 17.82 ft

(24)

N-3

## South Quarter Corner, Section 18

June 1876 B. C. Baldwin

West random between 18 &amp; 19

15.00 leave Ten swamp

40.00 top  $\frac{1}{4}$  cor

91.00 Intersect 20 lks north of cor 13-18-19-24

East true

6006A 51.00 set post for  $\frac{1}{4}$  cor

Aspen 5 in S49E 35 lks 23.10 ft

Linden 6 in N57W 200 lks 132.00 ft

Sept 2, 1978 pp 15, SURVEYOR'S RECORD, Itasca County,  
Jackson Road survey, by P. C. Warner

Oak 12 inch N58E 342.5 ft

Elm 22 inch N72°30'E 260.0 ft

(24)

(29)

N-5

18/17 Southeast Corner of  
19/20 Section 18

June 1876 B.C. Baldwin  
North between 19 & 20  
7.00 leave pond set mc  
20.00 Enter Tam Swamp E-W  
38.00 leave same  
40.00 set post for 4 cor  
60.00 Enter tam & spruce swamp E-W  
80.00 Set post for corner to see  
17-18-19-20

Tam	6 in	N 84 E	61 lks	40.26 ft
Tam	4 in	S 77 E	77 lks	50.82 ft
Tam	3 in	S 70 W	123 lks	81.18 ft
Tam	3 in	N 5 W	93 lks	61.38 ft

June 1916 p 9, SURVEYOR'S RECORD, Itasca County  
Road #115 survey, by A.W. Nelson

Tam	4 in	S 45 1/2 E	54.2 ft
Tam post	5 in	S 31 W	42.5 ft
Tam post	5 in	N 32 1/2 W	40.1 ft
Spruce	4 in	N 53 E	66.5 ft

Need pp 10 SURVEYOR'S RECORD

(25)

June 23, 1936 874 by Mervin Balke - found Tamarack  
Stake 3 ft below soil in road bed.  
Set stake, marking corner 32 1/2 lks (21.95 ft)  
N 0° - (TAM-Squared) from true corner  
Set in Rd bed - 3 inches below bed.  
Tam stub 5 in N 43 E 100 lks 66.0 ft  
Tam post 5 in N 34 W 82 lks 46.92 ft  
Tam post 4 in S 31 W 64 lks 42.24 ft  
Tam stub 4 in N 46° 30' E 81 lks 53.46 ft

712-83 K. Whitehorn, LIS, and Dan Harman ~~BALKE~~  
intern, measured west on E CSAH #37  
5280 ft. find a 9.0 in Tamarack with  
Location poster and a 6 inch  
watch post with location poster north of  
road. Only Trip & Eye visible on either  
poster.

(26)

N-7

## South Quarter Corner, Section 17

June 1876 B-C. Baldwin

East Random 17<sup>d</sup> 20

32.00 leave Tam &amp; spruce SE

37.00 enter same

40.00 set trap by

54.00 leave Tam &amp; spruce swamp

80.00 intersect cor 16-17-20-21

West True

40.00 set post for 1/4 cor

Tam 4 in S18E 32 lbs 21.12 ft

Tam 6 in N46W 17 lbs 11.22 ft

7-12-83 K. Whitehorn & Dan Harmon, marked  
a point 2640 west of section  
corner  $\frac{1746}{2021}$

(26)

17/16 Southeast corner of Section 17  
20/21

June 1876 B.C. Buldwin

North between 20 & 21

38.00 Enter Tom swamp

40.00 Set post for by car

45.00 Leave Tom swamp

80.00 set post for car to 16-17-20 & 21

Ny Pine 12 in N78E 105 lbs 69.30 ft

Aspen 4 in S25E 136 lbs 89.76 ft

Aspen 4 in S1W 115 lbs 75.90 ft

Aspen 3 in N77W 120 lbs 77.20 ft

June 1916 SURVEYORS RECORD, pp 9, Itasca County

rd #115 survey by A.W. Nelson

N. Pine st (orig) 16 in N78E 69.4 ft

Birch 9 in S63E 102.4 ft

Birch 10 in S40 1/2 W 77.6 ft

Poplar 10 in N53 1/2 W 115.7 ft

Aug 1936 Baiko  
CCC field book - "no steel pipe found"

found Aspen Stub 10 in S40W 1.16 chs 76.56 ft  
scribed BT

10/9/1933  
~~10/9/1933~~

874 Welay Fuller ~~trach~~ ~~Forman~~ ~~trach~~ ~~Forman~~ ~~trach~~ ~~Forman~~ - Corner taken in road at intersection of Rd. Eix cache 36 lbs (23.76 ft) East. "All bearings are G.L.O. Trees but stake has been removed for road."

5 ft Birch stump 11 in S60E 159 lbs 104.94 ft

25 ft Aspen snag 12 in N50W 159 lbs 104.94 ft

20 ft Birch snag 10 in S47W 110 lbs 77.60 ft

7-12-83 Ken Whitcomb, RCS, USFS, and Dan Harmon

Brainard AVTI intern, searched area found a badly decayed pine stump that fits the 2-2 of roads N-55W. No scribe or axe marks visible. Set 60d spike down ± 0.5 ft at 69.8 ft from what appears to be the center at N78°E (5° E. sect) Stump is at edge of Powerline clearing. Orig Aspen SE falls in ravine clearing - no remains found. Aspen S10W falls in rd - no remains found. Aspen N47°W falls in rd ditch by CSAH #39 sign - no remains found. No further remains can be found of any subsequent perpetrators. Mosquitoes are nasty!

See pp 30 This Book

(B) N-11

South Quarter Corner, Section 16

June 1876 B.C. Baldwin

East random between 16 & 21

13.00 Enter Tam swamp

40.00 leave swamp set temp by cor

55.00 Enter tam swamp

80.00 Intersect cor 15-16-21-22

West true

40.00 Set post for 1/4 cor

Tam 3 in S 3 E 34 lks 22.44 ft

B. of Gilead 3 in N 10 W 34 lks 22.44 ft

June 1916 Apr 9, SURVEYORS RECORD, Itasca Co. Road  
survey # 115 by A.W. Nelson

Tam 4 in S 10 E 24.7 ft

Tam 6 in N 9 1/2 W 52.8 ft

31-11

(A)

(29)

N-13

16	15
21	22

Southeast corner, Section 16

June 1876 B. C. Baldwin

North between 21 &amp; 22.

40.00 Set 4 cor

80.00 Set post for Cor 15-16-21 &amp; 22

Tam 5 in S 4 E 185 lbs 122.10 ft

Tam 3 in S 20 W 160 lbs 105.60 ft

Tam 4 in N 26 E 132 lbs 87.12 ft

Tam 4 in N 6 W 104 lbs 68.64 ft

(30)

See pp 27 This Book

7-14-83 K. Whitehorn & Dan Harmon set  
a 2.5 inch ~~stem~~ (O.P.) aluminum pipe  
with a 3.25 inch diameter  
aluminum cap, down 1.0 ft below  
stamped as shown

T146NR26W  
S.17 S.16  
S.20 S.21  
1983  
S.S. No. 14677

Rd surface  
at approx  
E-E Rds  
N-S&W

Metal sign post 8' long easterly 30.0 ft  
w. 43 54-9 sign attached

N. Pine 5.9 inch S 45° W 117.60 ft to 2nd  
nail in NW face (d. blaze? scribed "520" & "BT")

Aspen 6.2 inch <sup>due EAST</sup> E 79.80 ft to 2nd  
nail in S face (d. blaze? scribe "516" & "BT")

N. Pine 20.3 inch N 12° E 273.90 ft to 2nd  
nail in easterly face, single blaze "516 BT"

All trees marked with Red enamel, 60d  
Spike vertical in base blaze of USFS Sign  
No 54-3

60d spike vertical in center of original  
BT stamp N 78° E 69.80 ft ~~to 2nd~~  
to 60d nail.

pp 57P N 43° E 53.35 ft to  
blaze on face of pole.

Certificate (363215) Filed  
3-6-84 Kenneth E. Whitehorn



A-9 SECTION CORNER 4-5-32-33

JUNE 1876 B.C. BALDWIN

SET POST FROM WHICH

TAMARACK 6 N80E 29 lks 19.14 FT

TAMARACK 6 S42E 40 lks 26.40 FT

TAMARACK 5 S38W 42 lks 27.72 FT

TAMARACK 5 N37W 29 lks 19.14 FT

8/6/34 H.M. KINKSKY? 874-9

Fd TAMARACK POST 2' high 3" diameter. POST  
WORN FROM EXPOSURE AND ILLEGIBLE. BELIEVES  
THIS IS THE ORIGINAL LAND OFFICE CORNER.

FSLP ON 5" TAMARACK FROM WHICH CORNER BEARS  
S 87°W .2 CHAINS DISTANCE.

12/10/58 NO NAME 874-9

NO BITS Fd TAG ON DEAD TAM 15' EAST OF  
ROTTED STAKE

A- A-5 SECTION CORNER 5-6-31-32

J. JUNE 1876 B.C. BALDWIN OREG GOUT SURVEY

SET POST FROM WHICH

BIRCH 4 N65W 45 lks 29.7 FT

T. BIRCH 4 N34E 37 lks 24.42 FT

T. BIRCH 4 S31E 39 lks 25.74 FT

T. BIRCH 4 S49W 30 lks 19.80 FT

874-9 NO DATE OR NAME.

8 TEM STAKE 2 FT HIGH.

BACK OF FORM SAYS "BT 5" TAM. N70 LINKS

9/6/38 874-9 by WALTER HABERLE

Fd WOOD POST IN GOOD CONDITION 4"4"20"  
did NOT BELIEVE THIS TO BE THE ORIGINAL  
CORNER. COULD NOT FIND BTs. Put FSL Pon  
6" BALKM FROM WHICH CORNER BEARS  
S 20°W 16 LINKS. ALSO ASPEN 12" N37°45'W  
o 04 WITNESS TREE.

C-9 QUARTER CORNER SECTION 4-5

JUNE 1876 B.C. BALDWIN ORIG GOUT SURVEY

SET POST FROM WHICH

TAM 4 S10E 28 lks 18.48 FT

TAM 4 N77W 61 lks 40.26 FT

7-12-34 874-9 H.M. KENISBY?

Fd POST IN SOUND CONDITION 4' high

3" dia. BELIEVES THIS IS ORIGINAL CORNER

CORNER AND B.T.S ARE SCRIBED BUT FIGURES

ARE ILLEGIBLE AND INDETERMINATE. FSLP ON

6" BLACK SPRUCE ON WEST SIDE OF TREE

FROM WHICH CORNER BEARS W30S = 18 CHAINS.

11/9/38 874-9 WALTER HABERLE

Fd WOOD POST IN GOOD CONDITION 3" X 3" X 36"

TAM STUB 4" N77W .61

TAM STUB 4" S10E .28

FSLP ON 4" SPRUCE FROM WHICH CORNER BEARS

S78°W 13 lks

E-4 QUARTER CORNER SECTION 6-7

JUNE 1876 B. C. BALDWIN ORIG GOUT SURVEY

SET POST FROM WHICH

J. PINE 7" N24W 43 lks 28.38

J. PINE 9" S28E 42 lks 27.72

B74-9 NO DATE OR NAME

BT-9" JP-NGOE-10 FT DOWN

E-9 SECTION CORNER 4-5-8-9

JUNE 1876 BC BALDWIN ORIG GOUT SURVEY

SET POST FROM WHICH

ASPEN 3" S72°W 53 lks 34.98

ASPEN 3" N78°W 62 lks 40.92

Balm of Gilead 3" N12°E 23 lks 15.18

Balm of Gilead 3" S22°E 34 lks 22.44

9/18/35 J.A. Gjølhaug Form 874-9

Fd CEDAR POST IN good CONDITION 72 years

BELIEVES THIS IS ORIGINAL CORNER. SET  
NEW CEDAR POST IN PLACE OF old POST. Old  
BTS ARE GONE. FSLP ON ASPEN 6" ON  
EAST SIDE OF TREE FROM WHICH CORNER  
BEARS N89°E .14 CHAINS.

G-21 QUARTER CORNER SECTION 11-12

JUNE 1876 B.C. BALDWIN OREG GOUT SURVEY  
SET POST FROM WHEEL

BALM OF GILEAD 2 S85W? 35 lbs 23.1 ft

7/28/39 WALTER HADLER Form 874-9  
FD IRON PIPE IN ROADWAY BELIEVED TO BE  
COUNTY CORNER. FSLP ON BTS BELOW

BALM OF GILEAD 14" N58W 1.05 69.3 ft

BALM OF GILEAD 14" S56W 1.40 92.4 ft

R-9 SECTION CORNER 20-21-28-29

JUNE 1876 BC. BALDWIN ORIG GROUT SURVEY  
SET POST FROM WHICH

BALSAM 5" N59W 35 lks 23.1

BALSAM 5" S79W 19 lks 12.54

SPRUCE 7" N6°E 19 lks 12.54

SPRUCE 8" S79E 11 lks 7.26

10/25/38 WALTER HABERLE FORM 874-9  
CORNER IN ROAD NO BTS FOUND  
PLACED FSLP ON SPRUCE 10" FROM WHICH  
CORNER BEARS S72°W 77 lks.

JUNE 9-12 1936 BAILEY CCC FIELD BOOK  
NO MENTION OF ORIGINAL

BALSAM 6" S69°W .64 yellow tag

ASPEN 16" STUMP S46°W .84

R.S-5 WITNESS CORNER TO SECTION CORNER  
19-20-29-30.

JUNE 1876 R.C. BALDWIN

SET POST FOR W.C. 15.00 CHAIN

SOUTH OF SEC COR IN POND FROM WHICH

R. PINE 24 S 27W 90 lks 59.40

W. PINE 24 S 15E 1.00. 66.0

AUG 1936 MA. BALKE Form 874-9

Fd CEDAR POST IN good condition. BELIEVES  
TO BE ORIGINAL CORNER. Fd STUMP hole

S 26° 30' W 90 CHAINS. CORNER SCRUBBED 36"  
ABOVE SOIL, IN OPEN FIELD ON SOUTH SIDE OF  
POND



X-17 QUARTER CORNER SECTION 34-35

JUNE 1876 BC. BALDWIN ORIG GOUT SURVEY

SET POST FROM WHICH

TAMARACK 8" SBIE 3.00 198 FT

NO OTHER TREES AVAILABLE

9/12/35 ARTHUR JAGER FORM 8749

Fd TAMARACK POST & IRON POST IN GOOD  
CONDITION 30" ABOVE GROUND. FSL P ON  
FENCE POST ON THE SW SIDE OF POST FROM  
WHICH CORNER BEARS  $S8^{\circ}E$  25 CHAINS.

A-1 TOWNSHIP CORNER NORTHWEST SECTION 6

JUNE 1876 B.C. BALDWIN ORIG GOUT SURVEY

SET POST FROM WHICH

Y. PINE 10 NS8W 22 lks 14.52 FT

Y. PINE 14 N43 $\frac{1}{2}$ E 13 lks 8.58 FT

Y. PINE 11 S49 $^{\circ}$ W 8 lks 5.28 FT

Y. PINE 10 S32 $^{\circ}$ E 14 lks 9.24 FT

11/10/30 GERALD HORTON FOREST RANGER FORM 874-9

Fd SQUARED BIRCH POST REPLACEMENT NOT ORIGINAL. FOUND ALL ORIGINAL BEARING TREES. B.T.S ARE NOW STUBS.

JUNE-OCT 1936 GLO RESURVEY HAL. D. CRAIG  
Pg #2.

Fd BIRCH POST 3IN SQUARED SET BY LOCAL SURVEYOR  
SET A CYLINDRICAL CONCRETE MONUMENT 24" LONG  
7" DIAMETER 20 INCHES IN THE GROUND WITH  
BRASS TABLET 3 $\frac{1}{2}$ IN DIAMETER MKD. R27W R26W

T147N  
536 | 531  
51 | 56  
T146N  
1936

1936 CONT

Fd REMAINS OF ORIG B.T.S

R PINE STB 14" N56 $\frac{1}{2}$ E 22 lks

R PINE STB 14" S27E 16 lks

R PINE STB 16" S53W 12 lks

R PINE STB 18" N47 $\frac{1}{2}$ W 36 lks

ORIG B.T.S DO NOT CONFORM TO THE CALL OF FIELD NOTES. THE FACINGS OF THE B.T. DIARIES INDICATE THAT THE LOCAL STAKE IS THE BEST POSSIBLE DETERMINATION OF THE CORNER POSITION. ADD NEW B.T.S

W PINE 5" N75E 26 lks 17.16 FT MKD. T147N R26W S31BT

BIRCH 8" S73E 25 lks 16.5 FT MKD. T146N R26W S6BT

J PINE 9" N69W 38 lks 25.08 FT MKD. T147N R27W S36BT

R-11 QUARTER CORNER SECTION 21-28

JUNE 1876 B.C. BALDWIN ORIG GDOT SURVEY

SET POST FROM WHICH

7 BIRCH 8" S2°E 1.65 108.9 FT

JUNE 9-12 1936 BAIRDE CCC FIELD BK

YELLOW TAG N 36°40'E 162

NO MENTION OF TREE TYPE OR IF ANY EVIDENCE  
WAS FOUND AT ORIGINAL

## V-5 SECTION CORNER 29-30-31-32

JUNE 1876 BC. BALDWIN ORIG GOUT SURVEY

SET POST FROM WHICH

BIRCH 6 SSE 14 lks 9.24

ELM 4 S44W 30 lks 19.8

ASH 4 N59W 32 lks 21.12

BIRCH 4 N6E 47 lks 31.02

AUG 1936 BAILEY

ELM 7" S68E 25 16.5 FT

DEAD BIRCH 20" S7E 14 9.24 FT

SPRUCE 24" S68W 47 31.02 FT

DEAD ELM 5" N58W 32 21.12 FT

DEAD BIRCH 8" N7E 47 31.02 FT

BIRCH 9" N24W 23.5 15.5 FT

ELM Sp 4' S44W 30 19.8 FT

CENTER WEST 1/16 TO SECTION 32  
 PLAT OF SURVEY SEC. 32 By ITASCA  
 COUNTY 1958 - By SAM BENZING  
 SET 2" X 5' LONG IRON PIPE WITH  
 BRASS CAP

WITNESSED By MAG.

N. PINE 11 NB7E 34.18'

J. PINE 6 WEST 21.18'

NO TRACE 6/4/96

OAK 5 SIZE 24.54'

NO TRACE 6/4/96

1978 R. OLESON

FD. PIPE WITH BRASS CAP BADLY BENT

By DOZER - BOTTOM OF PIPE STILL IN PLACE

REPLACED WITH 2" X 36" WITH BRASS CAP

MARKED - 8" BELOW GROUND

WITNESSED By

N. PINE 14 NSW 36.30'

N. PINE 20 S65W 55.47'

6-4-96 RMYCK

FD. IRON + CAP IN PLACE - IN WOODS TRAIL

FD. N. PINE 18 EAST 34.18'

FD. N. PINE 16 NSW 36.30'

FD. N. PINE 24 S65W 55.47'

CENTER QUARTER SECTION 32  
 PLAT OF SURVEY SECTION 32  
 ITASCA COUNTY 1958 By SAM BENZING  
 SET 2" X 5' LONG IRON PIPE WITH  
 BRASS CAP MARKED

## WITNESSED By

OAK	6	N89E	26.15'	
Fd. R. OAK		S78E	26.15'	TAGGED
OAK	4	N2W	12.87'	
Fd. R. OAK		N11E	12.87'	TAGGED
N. PINE	12	S40W	25.61'	
Fd. N. PINE		S52W	25.61'	TAGGED

6-4-96 RM-CK

Fd. IRON AND CAP-IN PLACE

Fd. ALL 3 BT'S ALIVE

REOPEN LINE BACK TO HWY 46 + PAINTED  
TREES ALONG LINE

CORNER IS APPROX. 400' EAST OF HWY. 46

BLAZED N. PINE ON EAST SIDE OF HWY.

45

QUARTER CORNER BET. SEC'S. 5 & 6  
ORIG. GOV'T. SURVEY 1876  
SET WOOD POST

TAM. 5 N20W 25 LKS. = 16.50'

TAM. 5 N45E 30 LKS. = 19.80'

QUARTER CORNER BET. SEC'S. 4 & 5

ORIG. GOV'T. SURVEY 1876

SET WOOD POST

TAM. 4 S10E 28 LKs = 18.48'

TAM. 4 N77W 61 LKs = 40.26'



QUARTER CORNER BET. SEC'S. 33 & 34  
 ORIG. GOV'T. SURVEY 1876  
 SET WOOD POST

TAM. 5 S21W 223 Lks. = 147.18'

TAM. 4 S39½E 360 Lks. = 237.60'

CORNER TO SECTIONS 27-28-33+34  
 ORIG. GOVT. SURVEY 1876  
 SET WOOD POST

ASPEN 6 S40W 20 LKS. = 13.20'

ASPEN 4 N38W 22 LKS. = 14.52'

ASPEN 6 N72E 41 LKS. = 27.06'

ASPEN 4 S69E 56 LKS. = 36.96'

49

QUARTER CORNER BET, SEC'S. 27+34  
 ORIG. GOV'T. SURVEY 1876  
 SET WOOD POST

BALMIE 7 N41W 22 LKS. = 14.52'

WILLOW 3 S3W 18 LKS. = 11.88'

49

QUARTER CORNER BET SEC'S. 27+34

ORIG. GOV'T. SURVEY 1876

SET WOOD POST

BALMIE 7 N41W 22 LKS. = 14.52'

WILLOW 3 S3W 18 LKS. = 11.88'

QUARTER CORNER BET. SEC'S. 28 + 33  
ORIG. GOVT. SURVEY 1876  
SET WOOD POST

ASPEN 3 SOUTH 71 LKS. = 46.86'

J. PINE 12 N5W 45 LKS. = 29.70'

51

QUARTER CORNER BET. SEC'S. 27+28  
ORIG. GOV'T. SURVEY 1876  
SET WOOD POST

DEAD TAM. 3 S56W 18 LKS. = 11.88'

DEAD TAM. 3 N74E 58 LKS. = 38.28'

51

27+28-53-18 7007 132 47 9740 15

1121 450000 1122 5125

1123 5750 1124 6400

1125 7000 1126 7650 1127 8300

1128 8950 1129 9600 1130 10250

1131 11000 1132 11650 1133 12300

1134 12350 1135 13000 1136 13650

CORNER TO SECTIONS 21-22-27+28  
 ORIG. GOV'T. SURVEY 1876  
 SET WOOD POST

TAM. 3 N24W 65 LKS = 42.90'

DEAD TAM. 4 S55W 86 LKS = 56.76'

DEAD TAM. 6 S84E 93 LKS = 61.38'

DEAD TAM. 5 N76E 76 LKS = 50.16'

QUARTER CORNER BET. SEC'S. 21+22  
ORIG. GOVT. SURVEY 1876  
SET WOOD POST

TAM. 5 S75W 37 LKS. = 24.42'

TAM. 5 N34E 110 LKS. = 72.60'

QUARTER CORNER BET. SEC'S. 9410  
ORIG. GOV'T. SURVEY 1876  
SET WOOD POST - IN OPEN SWAMP

NO TREES

QUARTER CORNER BET. SEC'S. 9410

ORIG. GOV'T. SURVEY 1876

SET WOOD POST

NO TREES

NO TREES



QUARTER CORNER BET. SECS. 4+9  
 ORIG. GOVT. SURVEY 1876  
 SET WOOD POST

SPRUCE 6 S30E 27 LKS = 17.82'

CEDAR 10 N44W 13 LKS = 8.58'

QUARTER CORNER BET. SECS. 4+9

ORIG. GOVT. SURVEY 1876

SET WOOD POST

SPRUCE 6 S30E 27 LKS = 17.82'

CEDAR 10 N44W 13 LKS = 8.58'

QUARTER CORNER BET. SEC'S. 20 & 21  
 ORIG. GOV'T. SURVEY 1876  
 SET WOOD POST

TAM. 5 S78E 12 LKS. = 7.92'

TAM. 6 N72W 18 LKS. = 11.88'

QUARTER CORNER BET. SEC'S. 20 & 21

ORIG. GOV'T. SURVEY 1876

SET WOOD POST

TAM. 5 S78E 12 LKS. = 7.92'

TAM. 6 N72W 18 LKS. = 11.88'

QUARTER CORNER BET. SEC'S. 5+8  
ORIG. GOVT. SURVEY 1876  
SET WOOD POST

ASPEN 5 S79E 25 LKS = 16.50'

ASPEN 5 N41W 38 LKS = 25.08'

QUARTER CORNER BET. SEC'S. 29+32  
 ORIG. GOV'T. SURVEY 1876  
 SET WOOD POST

W. PINE 30 S10W 45 LKS. = 29.70'

W. PINE 30 N10E 77 LKS. = 50.82'

SECTION 29-32-PC. PHOTOGRAPH OF STATION

NO. 100000 1000 1000

1000 1000 1000

1000 1000 1000 1000

1000 1000 1000 1000

1000 1000 1000 1000

1000 1000 1000 1000

CORNER TO SECTIONS 29-30-31+32  
 ORIG. GOV'T. SURVEY 1876  
 SET WOOD POST

BIRCH 6 SSE 14 LKS = 9.24'

ELM 4 S44W 30 LKS = 19.80'

ASH 4 N59W 32 LKS = 21.12'

BIRCH 4 N6E 47 LKS = 31.02'

MEANDER CORNER BET. SEC'S. 31+32  
 ORIG. GOV'T. SURVEY 1876  
 SET WOOD POST

BURR OAK 18 S60E 476 LKS. = 314.16'

MEANDER CORNER BET. SEC'S. 31+32

ORIG. GOV'T. SURVEY 1876

SET WOOD POST

BURR OAK 18 S60E 476 LKS. = 314.16'

MEANDER CORNER BET. SEC'S. 31+32

ORIG. GOV'T. SURVEY 1876

SET WOOD POST

BURR OAK 18 S60E 476 LKS. = 314.16'

MEANDER CORNER BET. SEC'S. 31+32

ORIG. GOV'T. SURVEY 1876

SET WOOD POST

BURR OAK 18 S60E 476 LKS. = 314.16'

MEANDER CORNER BET. SEC'S. 31+32

ORIG. GOV'T. SURVEY 1876

SET WOOD POST

BURR OAK 18 S60E 476 LKS. = 314.16'

MEANDER CORNER BET. SEC'S. 31+32

ORIG. GOV'T. SURVEY 1876

SET WOOD POST

QUARTER CORNER BET. SEC'S. 8 & 9  
 ORIG. GOV'T. SURVEY 1876  
 SET WOOD POST

CEDAR 12 S77W 18 LKS = 11.88'

ASPEN 3 N5E 17S LKS = 115.50'

QUARTER CORNER BET. SEC'S. 8 & 9  
 ORIG. GOV'T. SURVEY 1876  
 SET WOOD POST

CEDAR 12 S77W 18 LKS = 11.88'

ASPEN 3 N5E 17S LKS = 115.50'

QUARTER CORNER BET. SEC'S. 19420  
 ORIG. GOV'T. SURVEY 1876  
 SET WOOD POST

ASPEN 5 N82E 25 LKS. = 16.50'

ASPEN 5 N81W 10 LKS. = 6.60'

QUARTER CORNER BET. SEC'S. 19420

ORIG. GOV'T. SURVEY 1876

SET WOOD POST

ASPEN 5 N82E 25 LKS. = 16.50'

ASPEN 5 N81W 10 LKS. = 6.60'



QUARTER CORNER BET. SEC'S. 7+8  
 ORIG. GOV'T. SURVEY 1876  
 SET WOOD POST

ASPEN 5 N77E 20 LKS = 13.20'

ASPEN 5 N79W 6 LKS = 3.96'

CORNER TO SECTION 11-12-13-14

ORIG. GOV'T. SURVEY 1876

SET WOOD POST

ASPEN 5 N77E 20 LKS = 13.20'

ASPEN 5 N79W 6 LKS = 3.96'

ASPEN 5 N77E 20 LKS = 13.20'

ASPEN 5 N79W 6 LKS = 3.96'

CORNER TO SECTIONS 11-12-13+14  
 ORIG. GOV'T SURVEY 1876  
 SET WOOD POST

ASPEN 8 N58W 83 LKS = 54.78'

ASPEN 8 S34W 54 LKS = 35.64'

ASPEN 8 S42E 100 LKS = 66.0'

ASPEN 8 N78E 90 LKS = 59.40'

CORNER TO SECTIONS 1-2-11+12  
ORIG. GOV'T SURVEY 1876  
SET WOOD POST

ASPEN 3 S28E 19 Lks. = 12.54'

ASPEN 3 S1W 15 Lks. = 9.90'

CEDAR 5 N15E 70 Lks. = 46.20'

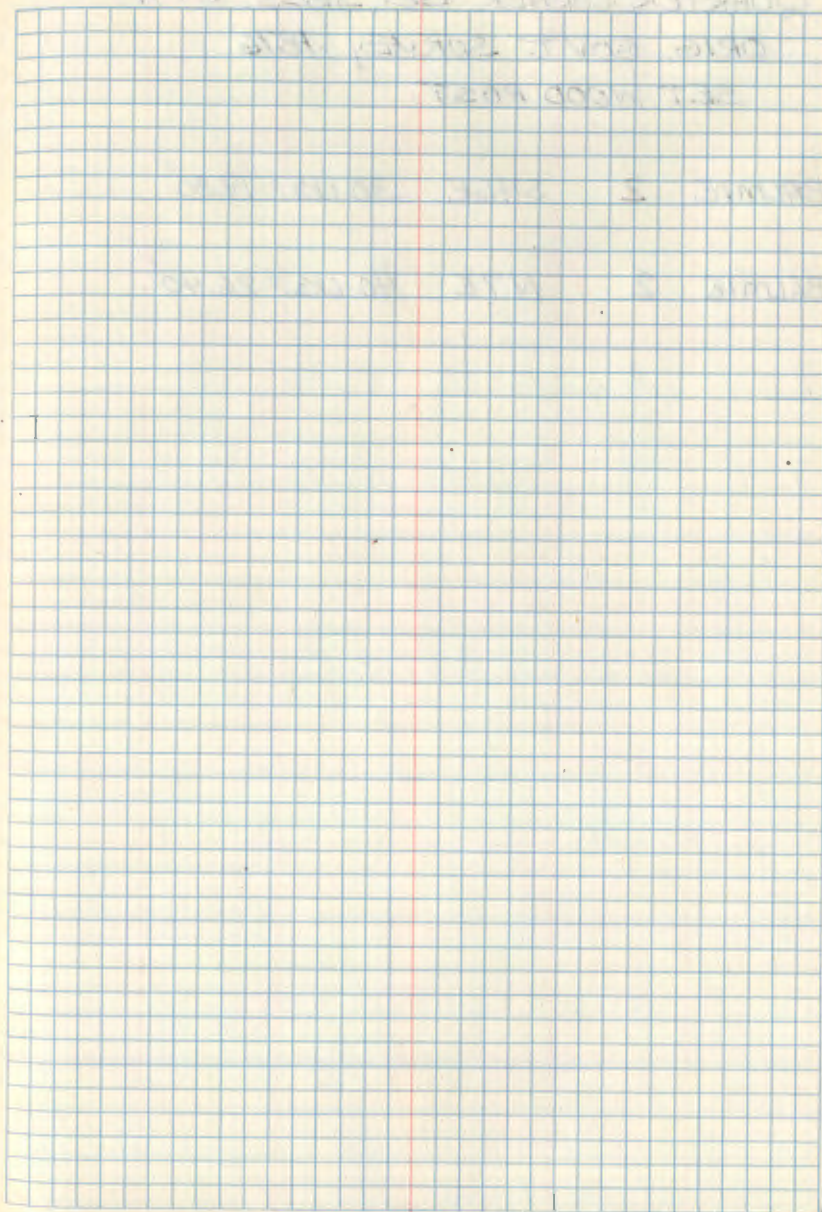
ASPEN 5 N87W 24 Lks. = 15.84'

66

QUARTER CORNER BET. SEC'S. 11+14  
ORIG. GOV'T SURVEY 1876  
SET WOOD POST

NO TREES

66



67.

QUARTER CORNER BET. SEC'S. 2+11  
 ORIG. GOV'T. SURVEY 1876  
 SET WOOD POST

BALMIE 2 S46E 30 LKS = 19.80'

BALMIE 2 N7E 40 LKS = 26.40'

67

CORNER TO SECTIONS 10-11-14+15  
ORIG. GOVT. SURVEY 1876  
SET WOOD POST

TAM. 4 S38W 15 Lks. = 9.90'

TAM. 6 N65W 64 Lks. = 42.24'

TAM. 6 N15E 8 Lks. = 5.28'

TAM. 8 S42E 29 Lks. = 19.14'

QUARTER CORNER BET. SEC'S. 10+11  
 ORIG. GOV'T. SURVEY 1876  
 SET WOOD POST

DEAD TAM. 10 S32E 351K<sub>3</sub> = 23.10'

CEDAR STUB 8 N48W 10 LK<sub>3</sub> = 6.60'

CORNER TO SECTIONS 2-3-10+11  
 ORIG. GOV'T. SURVEY 1876  
 SETWOOD POST

BIRCH 3 S72W 13 LKS. = 8.58'

ASPEN 3 N53W 110 LKS. = 72.60'

DEAD TAM. 8 N4E 20 LKS. = 13.20'

DEAD TAM. 12 S58E 58 LKS. = 38.28'

Remainder of  
 Book -

Blank  
 Pages