

CORNER
RESTORATION
T145N R27W



MINING
TRANSIT BOOK

No. 384-P

BOOK #1

CORNER RESTORATION T145N R27W



T145N, R27W

DISTRICT RANGER
U. S. Forest Service
P. O. Box 308
Deer River, MN 56636

USFS Book #1

T145N, R27W. 5th P.M.

CHASS COUNTY, MINN.

	2	66	65	6	64	63	61	62			
6	12	5	28	4	42	3	43	2	60	1	
14	13	27	4	1			44	79	59	67	
7	15	8		9	11	10	7	11	58	12	
17	16	26	29		41		45		57		
18	18	17	30	16	40	15	46	14	56	13	
18	20	19	25	31		39		47	55		
19		20	5	21		22	48	23	54	24	68
17	22	21		32	9	38		49	53		3
76	30		29	35	28	37	27	10	26	52	25
75			34		36				8		69
31		32	35	33			34	50	35	51	36
74	73	24		72		71		70			

NUMBERS NEAR CORNERS REFER TO
PAGE IN BOOK ON WHICH NOTES
TO THAT CORNER FIRE FOUND

SURVED BY P.H. CONGER

DEC. 13 1873 TO JAN 1 1874

① E-11

1/4 CORNER REF. S-4-9 T145N R27W

54

59

ORIG. NOTES

PINE 10" N7W 14.00 9.24

PINE 6" S35W 16.00 10.56

I SET 6" Concrete Cylinder 5' long
capped with brass Tablet marked

T145N R27W

1/4 54

1/4 59

1959

RLS. 3628

from which bears NEW BTS.

R Pine 9" N16W 9.2' MKD T145R27W BT

R Pine 7" S80 1/2 W 12.7' MKD T145R27W BT

R Pine 7" S11E 6.5' MKD T145R27W BT

Evidence of ORIG. BTS.

L. Pine Stamp. N7W 9.2' MKD 4 S BT.

~~Pine Stamp. S25W 10.6' MKD 4 S BT.~~

OK
MGL
RLS. 12261

Affidavit
9/8/78

Location Poster on BT SIDE
6.5' from CORNER.

9-3-96 CK

FD. CONCRETE MONUMENT - IN PLACE - IN N. PINE
PLANTATION, SOUTH
150' OF INTERSECTION OF COUNTY ROAD #9 AND
FR 3010 - IN LIGHT BRUSH AND SMALL BALSAM

PAINTED RED BAND AND NEW BT TAGS

ORIG. J. PINE STUB LYING ON GROUND WITH SCAR + SCRIBE (NTW,
NOW 14" N. PINE N16W 9.2' SCAR TO COR. 9.24

NOW 14" N. PINE S80 1/2 W 12.7' " " "

NOW 14" N. PINE S11E 6.5' " " "

8" STEEL SIGN POST EAST 40'

SMALL LIGHT DUTY SIGN POST (CASS COUNTY) 1/4 SIGN
IS 2.75' SOUTH OF COR.

COUNTY ALUM TAG ON NW & SW BTS.
OLD PSLP ON SE BT

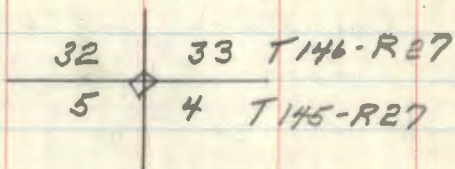
JUNE 23, 1959

Arthur W. Fletcher

2 A-9

August 3, 1958

Sect. Corner between Sec's. 4-5 & 32-33



Evidenced by one remaining original bearing tree of the Govt. Survey of 1873

(a) 9 inch Red Pine (now 16" windfall with scribing visible) N. $44\frac{1}{2}^\circ E$, 30 Links or 198'
No other evidence of orig. monument or accessories was found

New B.T.'s

Sect 32	8" R. Pine	N $62^\circ W$	28.6'	-
Sect 5	9" W. Pine	S $68^\circ W$	30.2'	-
Sect 4	8" R. Pine	S $5^\circ E$	25.4'	-
Sect 33	8" R. Pine	N $11^\circ E$	43.8'	-

Note all Ref Bearings are True

Corner mkd. by 2" inside dia. 5' long galvanized wrought iron pipe filled w/ concrete & capped w/ 3" dia. bronze tablet stamped

T146N, T145N R27W

4-5-32-33

1958

R.L.S. 3628

#Fridavt

T146NR27W

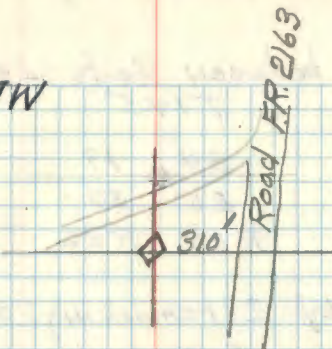
S32|S33

S5|S4

T145N

1996

USFS



Metal Location Poster is on a 9" R. Pine
From which the corner bears N $29^\circ E$
13.8'

Also a location poster is on a post
beside FR. #2163 approx 310' East
o.f. corner 8/28/196 OK

- NOW 14" N. PINE N $62^\circ W$ 28.6' TAG w/SCAR
- NOW 14" W. PINE S $68^\circ W$ 30.2' " " "
- NOW ROTTED PINE STUMP (LEVEL)
- NOW N. PINE STUMP N $11^\circ E$ 43.8' BT TAG ON TOP
- 8' STEEL SIGN POST SOUTH 2190'
- MARKED NEW B.T.'s.

N. PINE 11 N $39^\circ E$ 48.85' MKD S33 BTN. PINE 13 S $68^\circ E$ 18.82' MKD S4 BT

OLD MONUMENT WAS BENT OVER AT $90^\circ K$
CAP WAS MISSING
REPLACED WITH 2" x 5' IRON PIPE WITH
CAP MARKED - SEE ABOVE

75' SOUTH OF FR 3001
TAG ON 15" N. PINE NORTH
OF CORNER

Joseph H. Lancha

3 R-25 November 19, 1958

Sect. Cor. between Sects 24-25 & 19-30
T145

24	19
25	30
R27	R26

Evidenced by 2 remaining original scribed bearing trees of Govt. Survey of 1873

- ① 14" R. Pine (now 18" dead stub w/ scribing T-visible) N. 9° W., 385 Links or 254.1'
 - ② 6" J. Pine (now 16" J. Pine stub w/ scribing T-visible) N 15° E., 250 Links or 165.0'
- No other evidence was found

New Rts

Sect 24	7" Elm	N 13 1/2° W	76.5'
Sect 25	7" Elm	S 68 1/2° W	42.2'
Sect 30	7" Elm	S 22° E	54.2'
Sect 19	8" Elm	N 73 1/2° E	60.3'

All reference bearings are true

Corner mkd by a 2" inside dia. 5' long galvanized wrought iron pipe filled w/ concrete & capped w/ a 3 inch bronze Tablet stamped: T145N. R27W R26W

24-25-19-30
1958
R.L.S. 3620

affidavit

Joseph F. Lancha

4 E-9 August 3, 1958

Sect. Cor. between Sects 4-5-8-9 T145N R27W

5	4
8	9
T145N R27W	

Evidenced by one remaining original scribed B.T. of the govt. survey of 1873

- ① 14" inch Red Pine (now 28 inch with scribing visible) N 26° E, 34 Links or 224' No evidence orig. corner or other B.T.s found.

New B.T.'s

Sect. 5	16" R. Pine	N-38°W	52.3'
" 8	5" S. Maple	S. 60°W	36.8'
" 4	17" W. Pine	N 76° E	21.0'
" 9	6" R. Oak	N. 61° E	35.0'

All reference bearings are true bearings

Corner is marked by a 2" inside dia. 5' long galvanized wrought iron pipe filled w/ concrete & capped w/ a 3" bronze tablet stamped

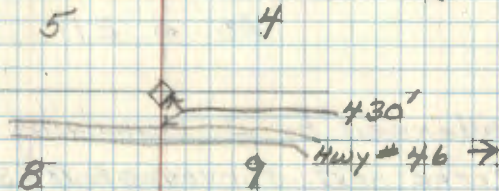
T145N R27W

4-5-8-9
1958

R.L.S. 362B

Affidavit

ESLP Fd. ON 12" W. PINE ON NW SIDE OF COUNTY ROAD #9 STATES NORTH 430' TO SEC. COR.



Tag on North side
Winnipeg Dam Highway

Metal location poster is on a 28" Red Pine from which the corner bears S 26° W 21.7 Ft.

10/10/96 RM+CK

Fd. IRON + CAP - IN PLACE - AT EDGE OF SWAMP NARROW GRASS SWAMP E/W JUST SOUTH OF COR. HIGH GROUND 150' SOUTH OF COR. - THIS RUNS TO COUNTY ROAD #9 - G.P.S. THIS COR. TODAY NEEDS WORK - ORIG. N. PINE STANDING NE OF COR. CAN BE SEEN ACROSS SWAMP FROM SOUTH

Joseph L. Laucke

5 ~~Re~~ December 3, 1958

1/4 Corner between Sect. 20-21

20 + 21

Evidenced by 2 remaining original B.T.'s
of the govt. survey of 1873; one remaining
B.T. of the recovery survey by T.A. Sjelhaug
Civil Eng. U.S. Forest Service 1937

- ① 8" Red Pine N80°E (Now 10" burnt stump
with no scribe visible) 8 links or 5.2 ft.
- ② 10" Red Pine (Now 11" burnt stump with no
scribe visible) S 45°W, 14 links or 9.2'
- ③ Recovery notes 5" T. Pine (Now 10" with visible
scribing) N55°E 61 links or 40.3' corner
was marked by 3" scribed stake

New B.T.'s

Sect 20	12" Red Pine	N 56 1/2° W	57.8'
Sect 20	7" " "	S 32° W	38.4'
Sect 21	5" " "	N 84° E	22.5'

All reference bearings are true bearings
Corner is MKD by a 2" inside dia.

5' long galvanized wrought-iron pipe filled
w/ concrete & capped w/ a 3" Bronze Tablet
stamped

T145N R27W

1/4 20-21
1958
RLS. 3628

Affidavit

1958 R PINE DEAD ^{JUST DIED} N. PINE N84E 22.5'

1958 R PINE 16" N56W 57.8'

1958 R PINE 14" S32W 38.4

NEW R PINE 14 1/2" S78°E 28.80 FT TO ~~MARK~~ MKD 1/5218T

FD. DEAD J. PINE SNAG N55E 40.3 SCRIBE VISIBLE

IRON ON SIDE HILL IN N. PINE + BRUSH

TAG ON N. PINE 16" ON ^{EAST} SOUTH SIDE OF ROAD

150' EAST ~~OF~~ CORNER - '

12/3/58
Joseph F. Lusche

6 A-15 July 3, 1958

1/4 Corner between Sect 3 & 34

T146N 34

R27W

T145N 3

Evidenced by 2 remaining B.T.'s of the original Govt survey of 1874

① 8" Red Pine (now 12" with visible scribing)

S 34 1/2° E 42 Links or 22.7 Feet

② 12" Red Pine (now 25" no scribe visible - burned out) N 58° E 2 Links or 4.6 feet

No other evidence of orig. corner found

New B.T.'s

Sect 3 11" Red Pine S 61° W 34.5 Feet

" 3 13" " " S 5° W 70.6 "

" 34 9" Jack Pine N 55° W 10.9 "

All reference bearings are true bearings

Corner is MKD by a 2" inside diameter 5' long galvanized wrought iron pipe filled w/ concrete & capped w/ a 3" bronze

Tablet stamped: -

T146N. T145N. R. 27W.

1/4 34
3

1958

RLS. 3628

Affidavit

8-26-96 OK

Fd. 2" IRON CAP - IN PLACE - 20' WEST OF FR 3050

ORIGINAL BT'S

WELL ROTTED N. PINE STUMP AT N 58° E 4.6'

WELL ROTTED N. PINE STUMP AT S 34° E 22.7'

1958 BT'S.

N. PINE 20 S 61° W 34.5' SCAR FACING COR.

N. PINE 20 S 5° W 70.6' " " "

J. PINE DEAD 14 N 55° W 10.9' SCRIBE VISIBLE

MARKED NEW BT

N. PINE 13 NORTH 8.87' MKD 1/4 S 34° BT

8' STEEL SIGN POST NORTH 3.8'

PAINTED + TAGGED ALL BT'S.

VERY THICK BRUSH AROUND CORNER - IN M & J PINE PLANTATION

Joseph A. Lanche

7 G-17 November 25, 1958

1/4 Corner between Sect. 10-11

T145N R27W

10 & 11

Evidenced by one remaining scribed

B.T. of the orig. govt. survey of 1873

① 6" Jack pine (Now 17" dead tree w/
scribing visible) N 75° E 90 LKs or 59.4'

No other evidence of the original
corner or accessories was found

New B.T.'s

Sect. 11 13" W. Pine N 3° E 106.8'

" 11 7" R. Pine S 21 1/2° E 124.0'

" 11 11" R. Pine S 22 1/2° E 92.6'

All reference bearings are true Bearing

Corner is MKD by a 2" inside diameter

5' long galvanized wrought iron pipe

filled w/ concrete & capped w/a 3" bronze

tablet stamped:-

T145N R27W

10 & 11

1958

R.L.S. 3628

Affidavit

10/9/96 RM & CK

FD. IRON & CAP-INPLACE - IN OPEN FLOTTING
BOG - 50' WEST OF HIGH GROUND - CAP IS 8"
ABOVE MAT

REMAINS OF 1958 B.T.'s.

N. PINE 20" S 80° E 97.6' SCAR FACING COR.

N. PINE 21" S 21° E 124.0' " " "

WHITE PINE WINDFALL 22" N 3° E 106.8'

RECENTLY WENT DOWN AS TOP IS STILL GREEN

8' STEEL SIGN POSTS NORTH 3.0' EAST 3.4'

ORIG. J. PINE STILL VISIBLE ON GROUND N 75° E 59.4'

Metal location poster is on the

NW side of a 8" J. PINE from which
the corner bears N 59° W - 54.4'

ABOVE J. PINE IS STILL PARTLY ALIVE.
TAG FACING CORNER - AT EDGE OF BOG

WOODS TRAIL IS APPROX. 220' EAST OF CORNER
ON PINE RIDGE. BRG. N 11° - 5° E

OLD TAG ON J. PINE STUB IS ON WEST SIDE
OF TRAIL - LEANING INTO 5' BALSAM
TRAIL IS FR 3010 CD IS STARTING TO CLOSE UP
WITH BRUSH & BALSAM

11/25/58

Joseph L. Lueders

8 V-21

Section Cor. 25-26-35-36

26	25
95	36

Evidenced by two remaining bearing trees of the Government Survey of 1874.

(1) J. Pine 5" (now 13" with scribing visible) N 6° W
38 links or 25.1'

(2) R. Pine 16" (now 20" stub with scribing visible)
N. 12 E 36 links or 23.8'

New B.T.s.

TAM 6" S 75 W 26.9' MKD. ± 145 R 27 S 35. BT.

TAM. 7" S 26 W 20.4' MKD. ± 145 R 27 S 35. BT.

SPRUCE 8" S 34 E 9.3' MKD ± 145 R 27 S 36. BT.

J. PINE 17" N 18 E 11.7' MKD ± 145 R 27 S 25 BT.

Cor. MKD by a 2" inside diameter 5 Foot long galvanized wrought iron pipe filled with concrete and capped with a 3" bronze tablet stamped. — ± 145 N 19 27 W

26	25
35	36

1958

R.L.S. NO 3628

Affidavit

CONT BK 2 P644

Corner location marker is on a 17" J. Pine BT. from which the corner bears — S 18° W

Line blazed north to old road tag on tree approx. 130 FT north of corner.

9-30-96 RMCK

Fd. 2" IRON PIPE - IN PLACE - AT EDGE OF SWAMP
BASE OF PIPE IS 12" ABOVE WATER IN SWAMP
Fd. PART OF WELL ROTTED J. PINE STUMP WITH
SCRIBE VISIBLE AT N 6 W - 25.1'

Fd. 48" LONG PIECE OF N. PINE STUB LYING
ON GROUND WITH SCRIBE VISIBLE AT N 12 E
23.8'

CORNER IS APPROX. 70' SW OF FR 2164.

— NOW 8" TAM. S 75 W - 26.9 SCRIBE CLOSED

— NOW TAM. WINDFALL AT S 26 W 20.4'

— NOW SPRUCE STUMP S 34 E 9.3'

— NOW 19" J. PINE N 18 E 11.7' SCRIBE VISIBLE

MARKED NEW BT'S.

N. PINE 21 N 12 E 90.45' MKD S 25 BT

N. PINE 20 N 28 W 62.44' MKD S 26 BT

8' STEEL SIGN POSTS SOUTH 5.4 + WEST 5.25'

NE BT IS ACROSS ROAD 2164

LARGE ASPEN 3' SW OF IRON

8/3/58

Joseph L. Louchie

9 R-11

1/4 corner between Sec. 21-28

21
—
28

Evidenced by one remaining original bearing tree of the Government survey of 1873

(1) Tam. 6" (now 8" windfall partly decayed with scribbles S visible) S 38° W 11 links or 73 ft. Corner was found to be marked with a squared stake partly decayed

Corner marked with a 2" inside diameter 5 foot long galvanized wrought iron pipe filled with concrete and capped with a 3" diameter bronze tablet stamped. —

T 145 N R 27 W
1/4 S 21
S 28
1958
R.L.S. NO. 3628

Affidavit

New B.T.s.

Tam. 7" N 71 1/2° W 20.1 ft MKd - T 145 N

- R 27 W S 21 B.T.

Tam. 5" S 5 W 28.5 ft MKd - T 145 N

- R 27 W S 28 B.T.

Tam 6" N 71 1/2° E 8.4 ft MKd T 145 N

- R 27 W S 21 B.T.

poster is on a 6" tam. found which cor. bears S 71 1/2° W

I blazed line north to road approx 2000 ft put tag on post.

12/1/58 Joseph A. Lausche

10 T-17

1/4 corner between Sec, 26-27

27 26

Evidenced by two remaining OT19,
bearing trees of The Government
Survey of 1873.

(1) J. Pine 10" (now 12" stump
partly decayed with scribbing
B.T. visible) N65E 35 links or 231'

(2) J. pine 4" (now stump
hole) S81W 10 links or 6.6'
New B.Ts.

W. pine 17" N73W 86.1' WENDFAH/2011^{RM}
MKd, 145 R27 S27 BT.

R. pine 17" S20 1/2 W 65.1' WENDFAH/2011^{RM}
MKd, T145 R27 S27 BT.

R. pine 16" S49E 33.9' NW22"
MKd. T145 R27 S26 BT.

Corner mkd by a 2 inch inside
diameter 5 foot long galvanized
wrought iron pipe filled with
concrete and capped with
a 3 inch diameter bronze
tablet stamped -

Affidavit

T145 N R27 W

1/4 S27 S26

1958

R.L.S. NO. 362B

Location poster is on a
16" R. pine from which the
corner bears S. 48° E 33.9'

I blazed line north to road
approx. 1200' tag on post
on north side of road.

10-19-2011 R. MAIN
FD IN PLACE AND GPS. TWO NEW TIES FOUND
FROM MAY 2010 BY DRW AND PH

BALSAM 11" S 86° E 120' TONAIL

ASPEN 12" S 53° W 234' TONAIL

11/26/58

Joseph H. Lusche

Quarter Con. Sec. 5-6

Notes of Orig gov't survey of
1873.

N. Pine 6" S73°W 194ks - 12.54'

Birch 3" N18°W 274ks - 17.82'

13 E-5

Section Cor. Sec. 5-6-7-8

Notes of Orig gov't survey of

1873. (corner was found to be marked by a
original 2nd corner
squared post) (S)?N. Pine 28" N29°E 14 LKs - 9.24' (Now a
stp hole S29°E 9.24' Windfall 28" scribed T145 R2758)

N. Pine 24" S79°W 50 LKs - 33.00' (Now 26"

pine stub S81°W 42.0 FT badly burned blaze facing
67°W
corner)

N. Pine 6" N71°W 40 LKs - 26.40'

(Not found)

N. Pine 6" N77°E 34 LKs - 22.44'

(Not found)

Set a 2 inch inside diameter, 5 foot long galvanized wrought iron pipe filled with concrete and capped with a 3 inch dia. bronze tablet stamped

T145N R27W

56 | 55

57 | 58

1963

RLS NO 3628

Red pine 15" N78°E 21.2 feet mxd S5 BT NOW 21"

Red pine 11" S74½°E 72.7 ft. mxd S8 BT BONE

Cedar 7" S38½°W 29.5 ft. mxd S7 BT NOW 9 11"

Red pine 6" N28°W 62.9 ft. mxd S6 BT NOW 13"

Steel sign post 72" long, set 24" in ground w/
NYTGS

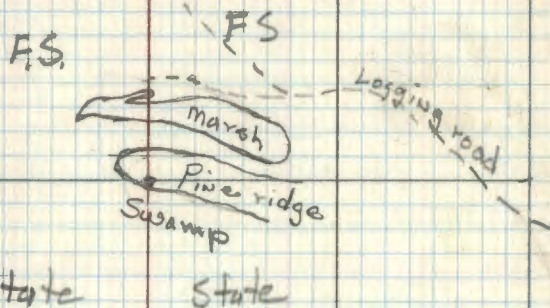
signs 54-2 & 54-4 attached due West 4.6 Ft

Affidavit RHM

6-13-63
obscureOriginal running notes:-
North between 7-8 - Var. 10°30'E9.00 Leave swamp enter good pine
31.00 Enter spruce swamp E-W
39.00 Enter open marsh E-W
40.00 Set 1/4 Cor. (see page 15)
80.00 Corner for 5-6-7-8 in edge of swamp.
Swamp on line - good pine each side

3-29-2011 R MAIN

6 Fd IRON AND GPS

1963 RPINE 21" N73E 21.45 TO SPOK / SCRIBE OVER
GREENSTATE CLEAR CUT EAST AND SOUTH. CUT OFF
THIR SIDE OF PINE RIDGE. GPS DIST TO
NE OF 8 ± 5764 FT. Fd OLO TAG ON 11" RPINE
N62°W 21.07 FT TO NEW SPEKE11-6-29 874-9
Fd 2" x 2" x 36" SQUARED STAKE. BELIEVE TO BE ORIG
CORNER. FSLP ON 7" R. PINE FROM WHICH CORNER
BEARS S70°E 30 CHAINS

5-15-63 G.H. McDonald

14

Quarter Cor. Sec. 6-7

Notes of Orig gov't survey of
1873.

tan 4" East 19 Lks 12.54'

tan 4" West 33 Lks 21.78'

1 15

Quarter Cor. Sec. 7-8

Notes of Orig gov't Survey

1 of 1873

T Tam 5" N72°W 8 Lks - 5.28'

T Tam 5" S68°E 10 Lks - 6.60'

Section Cor. Sec. 7-8-17-18

Notes of Orig gov't survey
of 1873.

7 Tam 5" S11°E 15 Lks - 9.90'

7 Tam 5" N70°W 33 Lks - 21.78'

Cedar 4" S22½°W 30 Lks - 19.80'

Cedar 6" N12°E 40 Lks - 26.40'

This corner was visited by Earl Hardy,
CCC in 1920. He recovered a squared
stake. He placed a Metal location poster
on a tamarack, 3" - corner bears S73°W,
12 Lks distance (Form 374)

4/11/61 Corner visited by Morrison, Tucker
and lease. They installed a new tag.
They recovered an old F.S.H.P.

17

Quarter Cor. Sec. 7-18

Notes of Orig gov't Survey of
1873.

Tam 4" S31°E 194hs 12.54'

Tam 4" N7°W 164hs 10.56'

Quarter Cor. Sec. 17-18

Notes of Orig gov't survey of
1873.

Tam 4" S19°E 67 Lks- 44.22'

Tam 3" N11°W 33 Lks- 21.78'

Section Cor. Sec. 17-18-19-20

Notes of Orig gov't Survey of 1873

Pine 8" N56°W 25 Lks- 16.50'

Birch 6" N34°E 20 Lks- 46.20'

Pine 10" S64°E 20 Lks- 13.20'

Pine 14" S28°W 22 Lks- 14.52'

10/15/29 Emil Juntunen recovery (ccc.)

They recovered what they believed to be an original Gov't Survey corner. They placed a MLP on a J. Pine, 6", on the SW side from which the corner bears N83°E, 18 chs. Corner is 1/2 chain from highway in cat bed J. Pine

12/3/40 Survey by Layton, Phelps, Schantberger
Used corner for survey but did not establish any ties

10/13/65 Morrison & Morgan Recovery
USFS

Placed new tag on E. side of old plantation post - old tag on south side of same post. Another tag on E. side of W. Down rd, 8 chs East of this corner

20

Quarter Cor. Sec. 18-19

Notes of Orig gov't survey of
1873

Poplar 3" S17°W 28 Lks

Pine 6" N33½°E 84 Lks

21

Section Cor. Sec. 19-20-29-30

Notes of Orig gov't survey of
1873

Poplar 4" N44°E 40 Lks - 26.4'

N. Pine 16" N59°W 70 Lks - 46.2'

Spruce 4" S38°W 26 Lks - 17.16'

TAM 6" S40°E 68 Lks - 44.88'

22

Quarter Cor. Sec. 19-30

Notes of Orig gov't Survey of
1873.

No trees.

)

23

Quarter Cor. Sec. 19-30

Notes of Orig gov't Survey of 1873

No trees.

23

Quarter Cor. Sec. 31-32

Notes of Orig Survey of 1873

J. Pixe 8" N5°E 520 LKs 343.20'

24 Z-5 T145 N R27 W

Standard Cor. 11th standard
parallel Sections 32-31

Notes of Orig gov't Survey of
1873

B. Pine 6" N61°W 68 Lks - 44.88'

B. Pine 5" N28°E 183 Lks - 120.78'

5680-11 By Morrison & Moreau, 1966

Set Proportionate 1937 GLO
Dependent Resurvey

Tamarack 12" N81½°E 234 Lks - 154.44'

White Pine 8" N41°W 96 Lks - 63.36'

White Pine 12" N40°W 63.56' (9/8/81)

Sept 8, 1981 K. Whitahorn, R. Olson

found GLO brass tablet in concrete on
small island in swamp, flush with the
ground. (See page 5, field Book #1)

Cut New BTs:

12" White Pine N63°W 20.34'
WIND FALL (2009)

9" Tamarack S57°E 4.77'
CUT DOWN BY BEAVER (2009)
with S. Morrison location poster

5/23/83 - G. Robertson & Dan Harman
Much blowdown from storm. 1937 white Pine
blown over. 1981 white pine blown over.
Est.

Blk spruce 5.5" N55°W 33.52' S315C BT
Now 8" (2009)

White pine 16.6" S67°W 31.39' S65C BT
NOW STANDING DEAD (2009)
All standing BTs double blazed and painted
red. Also have FS 54-3 signs on them
All BTs have 60d spike in base
of BT blaze

10-27-2009 REMAIN

Fd MONUMENT IN PLACE AND GPS.

25

Quarter Cor. Sec. 17-20

Notes of Orig govt Survey of
1873.

J. Pine 6" S85°E 500 LKs 330.00'

10/29/29 Emil Juntunen (see)

set a 2" x 2" x 24" stake
and a Nor. Pine, 12", ~~S85°E~~^{N82°E}
2.69 chs. with a MLP (from tree to
corner) Corner is in a little meadow
at the edge of a spruce sapling
swamp. They believed this to
be a genuine SLD corner

12/5/40 Survey by Layton, Schmittberger, Phelps
Used this corner for survey
but did not list any ties

Original Govt. survey running notes
West true line between secs 17-20

40.01 set 74 cor. on point of ridge in swamp

46.00 leave marsh enter barrens

80.02 cov. secs 17-18-19-20

26

Quarter Cor. Sec. 8-17

Notes of Orig govt Survey of
1873

TAM 8" S32°E 16 Lks - 10.56'

TAM 4" N43°E 13 Lks - 8.58'

11/8/29 Emil Juntunen (372) (CCC)
Believes he recovered an original
corner. There is a Tamarack, 9 in,
S32°E, .26 chs from the corner.
He also placed a MLP on a 2½ in
Tamarack from which the corner
bears S45°E, .15 chs.

3/28/61 Robert E. Leese, Forester USES
He recovered an old squared stake
in poor condition. He also found
an old tag. He put up a Aluminum
Location Poster, on an 8 in Tamarack,
NWN, 7 ft to the corner

Original Gov't survey running notes
West tree line between 8-17

5:00 leave marsh, enter barrens
28:00 leave barrens enter tamarack swamp
40:11 Set 1/4 corner
76:00 Wind Fall
78:00 leave Wind Fall N-S
80:22 corner 7-8-17-18

27

Quarter Cor. Sec. 5-8

Notes of Orig gov't Survey of
1873.

TAM 3" S 9° W 18 LKS - 11.88'

TAM 3" N 13° W 26 LKS - 17.16'

874 CCC NOTES By ED. JVERSEN 11/6/29

Fd. SQUARD SCRIBED POST 2" X 3" X 30"

SCRIBED 1/4 S

Fd. DEAD TAM. 9 SSW 10 LKS. = 6.60'

SCRIBED 1/4 S BT

Fd. DEAD TAM. 8 N 67 E 15 LKS. = 9.90'

SCRIBED 1/4 S BT

PLACED LOCATION POSTER ON 3" TAM. ON
SOUTH SIDE OF SECTION LINE - CORNER BRS.
S 26 E - 25 LKS. = 16.5'

BACK SIDE*

NOTE: JACK PINE STAND 1 CH. EAST OF COR.

Original running notes 1874
 West trap line between secs 5-8
 12.00 leave pine enter tamarack marsh
 20.00 leave tam. marsh enter pine
 25.00 enter tam. swamp
 30.00 set 1/4 corner
 34.00 leave swamp enter pine
 80.10 corner secs 5-6-7-8

1958 874 By JOE LAUSCHE
 Fd. ORIG TAM STD. 9" N 68 E 9.9' SCRIBED
 NEW BRS.
 TAM. 6 N 65 W 12.5'
 TAM 8 S 32 W 32.3'
 FSLP ON TAM 5 NORTH SIDE OF TREE
 COR BRS. N 18 E 22.7 FT.
 BLAZE LINE W TO ROAD APPROX. 925'
 TAG ON 17" WHITE WEST SIDE ROAD

28

C-9 Quarter Cor. Sec. 4-5
Notes of Orig gov't Survey of
1873

a 8" J. Pine is corner post

N. Pine 10" N80°W 35 LKs 23.10'

N. Pine 9" S88°E 22 LKs 14.52'

1/17
1989 R. MAEN

SET A 3/8" x 5' ALUMINUM ROD MONUMENT 1 FT ABOVE
THE GROUND. THREE INCH ALUMINUM CAP STAMPED.

T15N R27W (THIS MONUMENT WAS SET LAST

1/4
55454
1989
USFS.
RHS.
(PROPORTIONATE DISTANCE. Fd No)
ORIGINAL EVIDENCE.)

WITNESSED BY:

CEDAR 14" N27E 27.81' TO N141 3488N N1/4 54 BT

CEDAR 8" S53E 36.80' TO N141 N1/4 54 BT
SCRIBED

CEDAR 14" S86W 19.58' TO N141 N1/4 55 BT
SCRIBED

STEEL SIGN POSTS 6.5 SOUTH 1/2 3.90 NORTH

FOUND A APPROX 1/4 CORNER TAG ON A 8" CEDAR

WHICH BEARS S67°E 34.35' FROM OUR MONUMENT.
TAG FROM 1960 BY STAN MORRISON.

Original running notes 1874
S 7° E between Sec's 4-5

18.00 Enter marsh NE of SW
30.00 Leave same mostly west of line
39.84 Est. 1/4 Cor. 4-5
79.84 Cor. Sec's 4-5-B-9

29

Section Cor. Sec. 8-9-16-17

Notes of Orig gov't Survey of
1873.

TAM 5" S21°E 115 Lks - 75.90'

Cedar 5" S11½°W 130 Lks - 85.80'

TAM 5" N73°W 46 Lks - 30.36'

TAM 6" N2½°E 40 Lks - 26.40'

11/4/29 Emil Juntunen 879 (LL)
 He believes to have recovered
 the original corner. He put a
 MLP on a thin J. Pine from
 which the corner bears S 12°E,
 2 chs.

Quarter Cor. Sec. 16-17.
Notes of Orig Survey of 1873.

N. Pine 7" S33°E 35 1/4 - 23.10'

31

Section Cor. Sec. 16-17-20-21

Notes of Orig gov't Survey of
1873.T_{am} stub 8" S 66° W 50 Lks - 33.00'T_{am} stub 8" S 8° E 75 Lks - 49.50'

4/9/65 Morrison & Tucker USFS

Tag on E side of 12" Cedar with
old blazes on it. Approx corner
is 1 chain north of tag. This is
only an approx corner.12/5/40 Survey by Layton, Schattberger, Phelps
Used this corner for survey but
did not establish any referencesOriginal Govt. running notes 1874
North between 20-21

9:00 Leave Tam. swamp

10:00 Set 1/4 Corner

60:00 Leave ridge enter paplar & Hazel

25:00 enter Marsh E-W

80:00 Set cor. 16-17-20-21

32 R-9

Section Cor. Sec. 20-21-28-29
Notes of Orig gov't Survey of
1873.

Spruce 12" Post?

Cedar 6" N66°E 38 Lhs 25.08'

Spruce 4" S77°W 26 Lhs 17.16'

Now mostly decayed stump at record bearing & distance.

Cedar 8" S20°E 40 Lhs 26.40'

Two bearing trees from a recovery survey by
Civil Engineer V. A. Gjelhaug in 1937 for U.S.F.S.

Balsam 6 inch (now 8 inch w/ scribe visible)

N52°W 20.5 Feet

Cedar 9 inch (now 10 inch no scribe visible) N55°E

17.8 Feet.

Set a 2 inch inside diameter, 5 Foot long,
galvanized wrought iron pipe filled with concrete
and capped w/ a 3" dia. bronze tablet stamped

T145 N R27W

S20 | S21

S29 | S28

1958

RLS NO 3628

Hicidavit

New BTs

White birch 8 inch N27°W 25.4 Feet.

White spruce 10 inch S33°W 29.0 Feet.

Balsam 10 inch S21½°E 30.1 Feet

Cedar 9 inch S86°E 34.3 Feet

33

Quarter Cor. Sec. 28-29
Notes of Orig. gov't Survey of
1873

N. Pine 12" S67°E 134Ks - 8.58'

N. Pine 10" N73°W 154Ks - 9.90'

34

Section Cor. Sec. 28-29-32-33

Notes of Orig. Gov't Survey of 1873.

W. Pine 24" S52°W 26 Lks - 17.16'

W. Pine 26" S35°E 45 Lks - 29.70'

N. Pine 20 N65°E 25 Lks - 16.50'

N. Pine 22 N43°W 100 Lks - 66.00'

10/30/96 CK

WALK INTO AREA OF SEC. COR. - MANY WINDFALLS
PINE - BALSAM - ASPEN LYING ON GROUNDSOME OLD BURNED PINE STUMPS HAVE BEEN
CHOPPED ON - NO EVIDENCE OF BLAZES OR OLD
TAG WAS SEEN TODAY - WILL G.P.S. A POSITION
NEAR THIS AREA AND 1/4 COR. TO SOUTH SOON
THEN SEARCH AGAIN - MANY PINE STUMPS -
SOME VERY LARGE - BUT HEAVELY BURNED

11-7-96 RMYCK

SEARCH AGAIN FROM G.P.S. POSITION FOR SEC. COR.
MANY BURNED + BADLY ROTTED PINE STUMPS IN AREA
SOME VERY LARGE - PROBABLY W. PINE - MOST OF
OUTER SIDES ARE COMPLETELY BURNED AWAY
NOTHING COULD BE FOUND ON ANY STUMPS
TO GET CORNER LOCATION PINNED DOWN

35 X-9

Quarter Cor. Sec. 32-33

Notes of Orig gov't Survey
of 1873.

N. Pine 18" S65°W 20 Lks - 13.20' (Now
a 23" Red pine stub scribe $\frac{1}{4}$ " S BT visible.)

Poplar 12" S10°E 19 Lks - 12.54' (Not
found.)

Set New monument at record bearing & distance

Set a 2 inch inside diameter 5 foot long gal.

wrought iron pipe filled with concrete and

capped with a 3 inch dia bronze tablet

stamped:-

T145N R27W

$\frac{1}{4}$

S32 | S33

1962

RLS NO 3628

Cedar 15" N35°E 134.3 feet MKD $\frac{1}{4}$ " S33 BT

Cedar 12" S81°E 68.6 feet MKD $\frac{1}{4}$ " S33 BT

Red pine 20" S10°W 74.3 feet MKD $\frac{1}{4}$ " S32 BT

Steel sign post 72" Long set 29" in ground w/

signs 54-2 & 54-4 attached North 5.6 feet.

10-31-62 *JAM Donald*

Affidavit
RHM

6-13-63
ok with

Found F.S. metal location poster on a 10"
birch SW of corner. Tag put up in 1956
by Herron & Morrison.

2-14-66 recovery by S.M. Morrison

Recovered: Iron pipe w/B.C.

Cedar, 12", S81°E, 68.6'

Cedar, 14", N35°W, 134.3'

R. Pine, 22", S10°W, 74.3'

Birch, 9", S W, 14.0' loc poster

Established:

nothing

1929 H.A. Brills recovery

N.P., 27", S66°W, 25 lks

Spruce, 12", S23°W, 60 lks

1928 Leadbetter and Kirkmire recovery

N.P., 22 ins., $\frac{1}{4}$ " visible scribe

Dead tree, 27 ins, S66°W, 25 lks

Spruce, 12 ins., S23°W, 60 lks

Metal loc poster on spruce tree, 12 ins,
diam. NW side of tree. The corner bears
N23°E, 60 lks

See book #2 T145N R27W

pg 2

36

Section Cor. Sec. 27-28-33-34
 Notes of Orig Gov't Survey of
 1823.

Tan 4" S 42° W 7 Lks - 4.62'

Tan 6" N 44° W 32 Lks - 21.12'

Tan 6" N 12½° E 14 Lks - 9.24'

Tan 5" N 47° E 55 Lks - 36.30'

37

Quarter Con Sec. 28-27

Notes of Orig Gov't Survey of
1873.

TAM 6" S20W 81Ks - 5.28'

TAM 5" S5°E 361Ks - 23.76'

38

Section Cor. Sec. 21-22-28-27

Notes of Orig. gov't Survey of
1873

TAM 4" N27°E 40 Lks - 26.40'

TAM 3" S52°E 57 Lks - 37.62'

TAM 2" S87°W 80 Lks - 52.80'

TAM 6" N4°W 109 Lks - 71.94'

SURVEYED BY J.A. GJELHAUG 1937
INFORMATION OFF NUSHKA TOWER PLAT

ORIG. GLO CORNER

TAM. 4 S31E 38 Lks. = 25.08'

TAM. 6 N35E 44 Lks. = 29.04'

TAM. 4 S54W 48 Lks. = 31.68'

TAM. 6 N44W 67 Lks. = 44.22'

F.S. POSTER TAM. 4 S79W 10 Lks. = 6.60'

Section Cor. Sec. 16-15-21-22

Notes of Orig gov't Survey of
1 1873

7 Tam 4" S34°E 10 Lks - 6.60'

7 Tam 4" N17°E 14 Lks - 9.24'

7 Tam 6" S3½°W 22 Lks - 14.52'

7 Tam 6" N50½°W 40 Lks - 26.40'

S

1

i

7

7

F.

Orig. survey running Notes Gov't survey 1874,
North between 21-22

13.00 leave tam. swamp E-W

20.00 leave pine ridge enter Marsh

40.00 set ¼ corner

Tam 3" S17½° W 39 lks

Tam 3" N13° E 90 lks

80.00 set cor. sec's 15-16-21-22

North between 15-16

2.00 leave tam. swamp enter Nor. pine

22.00 Enter tam. swamp NW of SE

40

Quarter Cor. Sec. 16-15

Notes of Orig gov't Survey
of 1873

1 Tam 3" N17°E 33 LNs 21.78'

7 Tam 4" N25°W 36 LNs 23.76'

7 Tam 5" S55°W 28 LNs 16.87'

7 Tam 5" N25°W 34 LNs 21.76'

7

F

Section Cor. Sec. 9-10-15-16
Notes of Orig gov't Survey of
1873

J. Pine 4" N68°E 324s - 1.98'

ON island in swamp no other trees

Quarter Cor. Sec. 4-3

Notes of Orig gov't Survey
of 1873.

J. Pine 4" S11E W 8 Lks - 5.28'

J. Pine 3" N9E 6 Lks - 3.96'

Notes of orig. Gov't survey 1873-74
South true line sec's 3-4

17.00 leave marsh enter Paplar

28.00 Enter open marsh

39.00 leave marsh enter T. River

39.86 set 1/4 cor.

71.00 leave ridge enter swamp

75.00 leave swamp

79.86 Sec. Cor.

Quarter Cor. Sec. 3-2

Notes of Orig gov't Survey
of 1873.

Spruce 3" N71°E 83 Lk. 54.78'

Spruce 3" S9°W 80 Lk. 52.80'

Running Notes of orig. gov't. survey 1873-74
South true line between sec's 2-3.

40.14 set quarter corner
49.00 dry ridge barrens NW-SE
52.00 enter open marsh E-W
58.00 leave marsh enter brush
63.00 enter spruce + balsam scattered pine
80.14 Sec. Corner 2-3-10-11

Section Cor. Sec. 2-3-10-11

Notes of Orig gov't Survey of
1873.

Spruce 6" S62°W 16 Lks 10.56'

Spruce 12" S7°E 23 Lks 15.18'

Tam 4" N7°W 60 Lks 39.60'

Tam 6" N19°E 72 Lks 47.58'

874 CCC NOTES By ED. JVERSEN 10/23/29

Fd. SQUARD SCRIBED STAKE 4"X4"X48"

Fd. TAM. LOG 5 N11W 60 Lks. SCRIBED

S2T

PUT FSLP ON SPRUCE 8 ON SOUTH SIDE
OF E+W SEC. LINECORNER BRS. S73E 1/2 CHAIN.
FR2162M

7 1/2 CHS. = 495.0' SOUTH OF ROAD

10/3/96 RMYCK

10/2/96

FROM GPS POSITION ESTABLISHED ON WED.
WE RAN S32W 710' AND SEARCHED IN AREA
FOUND DOWN SPRUCE WITH BLAZE ON NORTH SIDE
WITHIN 10' OF OUR SEARCH POSITION
MEASURE NORTH TO FR 3010B.500' WHICH IS CLOSE
TO CCC DISTANCE ON 874 + MORE SEARCH IS NEEDED
AFTER WE G.P.S. MORE CORNER LOCATIONS IN
OTHER DIRECTIONS

45 J-17

Section Cor. Sec. 10-11-14-15

Notes of Orig gov't Survey
of 1873.

(Corner was found to be marked by a 3" dia. squared post)

Balsam 4" N64°E 25 LKs 16.50'

N. Pine 8" S47½°E 35 LKs 23.10' SNAG

(Now 23 inch red pine w/ scribing visible at record bearing & dist)

Birch 8" N30°W 12 LKs 7.92'

Birch 8" S55°W 98 LKs 64.68'

Set a 2 inch inside diameter, 5 foot long, galvanized
wrought iron pipe filled with concrete and capped
w/ a 3 inch dia. bronze tablet stamped:

T195N R27W

S10 | S11

S15 | S19

1958

RLS NO 3628

Red pine 21 inch N51°W 52.1 Feet Now 25"

Tamarack 9 inch S34°W 61.3 Feet DOWN

White birch 6 inch N50°E 31.2 Feet ROTTED STUMP

J.F.L.

Affidavit

11-01-2011 R.M.A.E.N.
FOLLOWING IN PLACE AND GPS.

Quarter Con. Sec. 15-14

Notes of Orig gov't Survey
of 1873.

Poplar 4" N80°E 36 Lks - 23.76'

N. Pine 12" S4°W 25 Lks - 16.50'

874-9

Fd SQUARED SCRIBED ROTTED STAKE, ORIG
R. PINE BZ 24" LAYING DOWN. PLACE FSL POND
J PINE 10" SOUTHEAST SIDE OF TREE. CORNER
BEARS S40°E 0017 CHAINS FROM TREE.

11-1-2011 R. MAIN

Fd NO EVIDENCE AT THIS TIME PLACE FSL
ON 20" W. PINE FROM WHICH APPROX CORNER
BEARS S 80°W ± 20 FT.

Section Cor. Sec. 14-15-22-23

Notes of Orig gov't Survey
of 1873.

Tan 4" S 85° E 75 Lks 49.50'

Tan 4" N 70° E 60 Lks 39.60'

Tan 6" S 14° W 90 Lks 59.40'

Quarter Cor. Sec. 22-23

Notes of Orig govt Survey
of 1873

TAM 4" S 61° W 55 Lks 36.30'

TAM 2" S 60° E 22 Lks 14.52'

Section Cor. Sec. 22-23-27-28

Notes of Orig gov't Survey
of 1873.

Tan 10" N16°E 12 Lks - 7.92'

Tan 5" S16°E 15 Lks - 9.90'

Poplar 4" S63°W 24 Lks - 16.84'

Poplar 10" N52°W 32 Lks - 21.12'

Quarter Cor. Sec. 34-35

Notes of Orig gov't Survey
of 1873

Tom 6" 554°E 10 1/2s - 6, 60'

Quarter Cor. Sec. 35-36

Notes of Orig govt Survey
of 1873.

J. Pine 3" S19°W 38 1/2s - 25.08'

J. Pine 4" N10°W 80 1/2s - 52.80'

Quarter Cor. Sec. 26-25

Notes of Orig gov't Survey
of 1873.

N. Pine 16" N45°E 18 Lks - 11.88'

N. Pine 15" S40°W 16 Lks - 10.66'

Note in files indicates recently one
original B.T. found?

Section Cor. Sec. 23-24-25-26

Notes of Orig govt Survey of
1873.

N. Pine 16" N28°W 540 Lks - 356.40'

J. Pine 5" N3½E 390 Lks - 257.40'

Poplar 4" S3°W 475 Lks - 313.50'

5680-11 - NOTES OF

Quarter Cor. Sec. 23-24

Notes of orig gov't Survey of
1873.

TAM 6" N10°W 19 Lks 12.54'

TAM 4" N4°W 50 Lks 33.00'

Section Cor. Sec. 13-14-23-24
Notes of Orig Gov't Survey
of 1873.

Poplar 10" S40°E 8 Lks - 5.28'

Poplar 4" S57°W 18 Lks - 11.88'

Poplar 10" N39°W 24 Lks - 15.84'

Poplar 5" N49°E 30 Lks - 19.80'

9/19/29 H. Johnson Form 874-9

FOUND A SQUARED SCRIBED POST 4" X 6". BELIEVED
TO BE ORIGINAL CORNER. METAL LOCATION
POSTER ON 4" ASPEN ON EAST SIDE OF TREE
FROM WHICH CORNER BEARS N85°E 25 LINKS.
CORNER LOCATED IN ASPEN SAWLOG STAND.

4/20/34 H.A. BRILLS Form 874-9

SAME AS 1929 FINDINGS

7/19/66 STAN MORRISON DAVE MORGAN

FD TAG (1947) ON SOUTH SIDE OF 10" BIRCH AND IS
APPROX CORNER. NO EVIDENCE FD OF ORIGINAL BITS OR POST.

10/21/73 R. MAIN C. KRAUSE

CHAINED WEST FROM WEST 1/4 1351.68 FT. THIS
DISTANCE IS FOUND IN LCC BK #17 Pg 24.
FD LOCATION POSTER BY SD AND OS FROM 1947 ON
A 10" BIRCH SNAG 1320 FT FROM W 1/4. SEARCHED
FOR 1929 TAG BUT COULD NOT FIND. FD A 30" DBH
X 6 FT PINE STUB WITH BLAZE ON THE NORTH
SIDE N2° WEST ± 85 FT. PLACED LOCATION POSTER
ON 8" W OAK EAST ± 45 FT FROM APPROX CORNER.
OUR POSITION IS ± 31 FT WEST OF 1947 POSITION.

Quarter Cor. Sec. 14-13

Notes of Orig gov't Survey
of 1873.

TAM 3" N10°W 36 Lhs - 23.76'

TAM 4" N15°W 50 Lhs - 33.00'

57 J-21

Section Cor. Sec. 11-12-15-14

Notes of Orig gov't Survey
of 1873.

Balsam 4" N69°E 25 Lks 16.50'

N. Pine 8" S47½°E 35 Lks 23.16'

(Now a 2.5 inch Red pine w/scribe "B" visible at record)

Birch 8" N30°W 12 Lks 7.92'

Birch 8" S55°W 98 Lks 64.68'

Set a 2 inch inside diameter, 5 foot long,
galvanized wrought iron pipe filled with
concrete and capped with a 3 inch diameter
bronze tablet stamped:

T145N	R27W
S11	S12
S14	S13
1958	
RLS NO 3628	

Red pine 5 inch N50°W 58.8 feet.

Jack pine 6 inch S2°E 18.1 feet

Red pine 5 inch N72°E 34.1 feet

JF Lausche 1958

Affidavit

9-24-96 R. MAIN C. KRAUSE

FD MONUMENT IN GOOD CONDITION UP 164 FT AND 30 FT
EAST OF FRZIGZ J. CORNER IN MELED AGE R PINE
AND BALSAM. FD TAG ON ORIG BT BY WRI & JB FROM
10-27-52. 1958 J PINE IS NOW A 20 FT SNG. 1958
R PINE N50°W 58.8 FT NOW A STUMP/W/Scribe DIS28 Lks

ORIG R PINE 30½" S47½°E 23.16 FT

1958 R PINE 17½" N72°E 34.1 FT. Scribe OVERGROWN

NEW R PINE 12" N74°W 53.22 FT TO SCK MED 8 S11 BT

NEW R PINE 15" S22°W 42.75 FT TO SCK MAD 8 S14 BT

8 FT STEEL SIGN POST 300 FT WEST

58 G-21

Quarter Cor. Sec. 11-12.

Notes of Orig gov't Survey
of 1873.

N. Pine 13" N14°E 22 Lhs - 14.52'

Tam 6" N75°W 18 Lhs - 11.88'

Found a squared post marking corner FS poster
was found on a 14" Red pine SW of corner had
been put up in 1962. 5-15-63 RHM

9-24-96 R MAIN CLARKE

FD RUSTED TAG ON 18" R. PINE THAT McDONALD REFEAS
TO. THIS PINE IS NOW A WIND FALL. FD 3" X 3" SQUARED
ROTTED POST LAYED DOWN WITH 2 FT OUT OF THE GROUND.
FD 1 FT OF SAME, STUCK IN GROUND WITH SHARPED
POINT. TAG WAS TO RUSTED TO READ. POST IS ON
NORTH EDGE OF TAMARACK SWAMP. TIED POST IN AT
THIS TIME TO R. PINE 15" N40°W 3304'S FT TO SPRG.
FSLP PLACED ON TREE.

145-27

FSLP ON 12" N. PINE
STATES APPROX 1/4 11-12
2.4 CHS, ^{160'}SOUTH
WRT-SMM 7-25-62

OLDER RUSTED TAG ALSO
ON SE SIDE OF RD NW-SE

R. PINE
15" N40°W 3304'S TO E WD POST

11 | 12

24 | 12

Section Cor. Sec. 1-2-11-12.

Notes of Orig gov't Survey
of 1873.

N. Pine 8" N30°E 35 LKs - 23.10'

J. Pine 6" S9°E 15 LKs - 9.90'

N. Pine 6" S21°W 20 LKs - 13.20'

N. Pine 20" N78°E 20 LKs - 13.20'

5070-11 By JOE LAUSCHE, 1958 - SCRIBED
Four New BT's & Found Two J. PINE
THOUGHT TO BEEN PLACED BY GJELHAUG IN
CCC Period.

874 (CCC NOTES) By ED. JMERSEN 10/25/29

Fd. SQUARD - SCRIBED STAKE - DOWN + ROTTED

4" x 4" x 30"

Fd. J. PINE 9 N78W 6 LKs. SCRIBED S2 BT

Fd. J. PINE 9 N6E 2 LKs. SCRIBED S1 BT

PLACED FSLP ON J. PINE 8 ON WEST SIDE
OF CORNER - CORNER BRS. S89W 5 LKs.
CORNER IS ABOUT 1 CHN. SOUTH OF A SMALL
POTHOLE OF GRASS - IN A BIRCH STAND

874 By JOE LAUSCHE 1958

NO POST FOUND

Fd. J. PINE 10 N77W 4.0' SCRIBED S2 BT

Fd. J. PINE STUB 10 N7E 13.6' SCRIBED S1 BT

NO RECORD OF NEW BT'S. AS STATED ON

CORNER CARD BY J. LAUSCHE

8/27/96 CK

NO MONUMENT COULD BE FOUND

Fd. N. PINE 20 N58W 12 FT. SHEILD TAG

Fd. N. PINE 14 S48W 54 FT. " "

NO OTHERS COULD BE FOUND

BOTH PINE HAVE LOWER SCAR

PAINTED BOTH TREES - NO INFO ON ANY OTHERS

Fd. JUST ROTTED LOG OF NW J. PINE - COULDN'T
FIND STUMP - OTHER J. PINE HAS BEEN SCRUBBED
OUT - AREA OF CORNER HAS BEEN DISTURBED

60 C-21

Quarter Cor. Sec. 1-2

Notes of Orig gov't Survey
of 1873

J. Pine 6" N35°W 22 Lks - 14.52'

Tan 6" S60°E 100 Lks - 66.00'

Searched 2 man hours around North end of
open marsh no evidence found 9-11-62 RHM

61 Set O.K.
RHM

A-21 Section Cor. Sec. 35-36 T146NR27W
Notes of Orig gov't Survey of
1873.

N. Pine 30" East 19 Lks - 12.54'

Now a stump hole East. 12.54 Feet.

N. Pine 14" S36°W 103 Lks - 67.98'

Now 18" pine windfall scribed "T145R27W" at record bearing ^{of distance}

N. Pine 20" S16°E 113 Lks - 74.58'

not found

N. Pine 28" N20°W 95 Lks - 62.70'

(Now a pine stump mostly decayed N43°W ~~62.7 Feet~~
^{at record bearing of distance})

Set a 2 inch inside diameter, 5 foot long, galvanized wrought iron pipe filled w/ concrete and capped with a 3 inch dia. bronze tablet stamped

T146NR27W

S35 | S36

S2 | S1

T145N

RLS 1962
No 3628

Red pine 9 inch N33½°E 44.35 Feet MKD S36 BT

Red pine 11 inch N50°W 41.5 Feet MKD S35 BT

Black spruce 5 inch S10°E 70.4 Feet MKD S1 BT

Steel sign post 72 inches long, set 24 inches

in ground w/ signs 54-2 & 54-4 attached

S78½°W 3.07 Feet.

Affidavit
RHM

6/13/65
RHM

62 T145N - T146N - R27W

Quarter Cor. Sec. 1-86

Notes of Orig Gov't Survey of
1873.

Poplar 10" N10°E 21 Lks - 13.86'

Poplar 8" S14°W 46 Lks - 30.36'

63 T145N-T146N-R27W

Quarter Cor. Sec. 2-35

Notes of orig gov't survey of
1873.

Tam 4" S $12\frac{1}{2}^{\circ}$ E 19 Lks - 12.54'

Tam 8" N 10° W 57 Lks - 37.62'

64 A-17

T145N - T146N - R27W

Section Cor. Sec. 2-3-34-35

Notes of orig gov't survey of 1873.

N. Pine 20" West 100 Lk. 66.00'

Now a stump hole at record Big dist

N. Pine 16" S78°E 179 Lk. 118.14'

Now a ^{16"} pine stump & windfall scribe "BT" visible at record Big dist

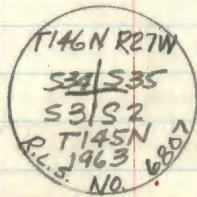
N. Pine 20" N82°W 238 Lk. 157.08'

Now a ^{20"} pine windfall at record big 150.6'

N. Pine 20" N0°E 328 Lk. 216.48'

Now a 20" pine stump partly decayed & broken at record distance N10°E

Set 6" dia. 5' long cylindrical concrete monument capped with a 3" dia. bronze tablet stamped—



R. Pine 8" S43°W 71.4 feet scribed S3 BT

W. Pine 19" N35°W 64.0 feet scribed S34 BT

R. Pine 13" N71°E 104.3 feet scribed S35 BT

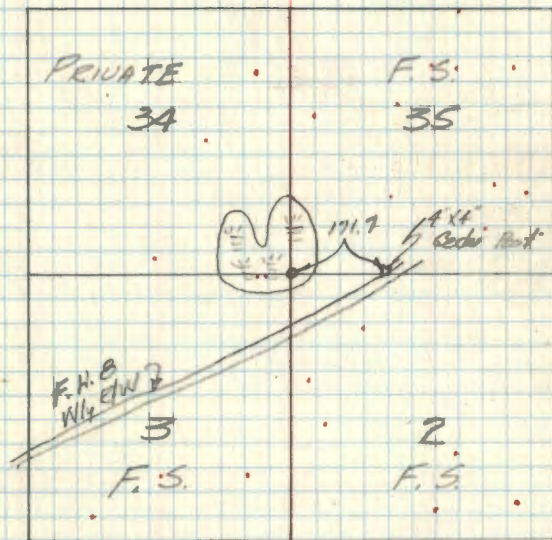
R. Pine 10" S59°E 75.1 feet scribed S2 BT

7-15-63 - B. McDonald
W. Okerman

sketch

steel sign post, 72" long, 24" in ground due west 4.7 feet with signs 34-4 & 35 attached
4" x 4" x 72" Red top Equared cedar post 24" in ground 171.7 feet due east on F.H. B - Wly line

W. Okerman



- 8-26-96 CK
CONCRETE MONUMENT PUSHED UP BY FROST-IN GRASS SLOUGH - WILL LOWER MONUMENT AND MARK NEW BT'S.
COUNTY BT'S. NOT SCRIBED
CASS
100. BT BLK. SPRUCE 9" N27W-43.12' WITH ALUM TAG
" " " N. PINE 7 SSE-67.53' " " "
- NOW N. PINE WINDFALL DECAYED w/TAG
- NOW W. PINE STUMP WITH BT SCRIBE AT BASE
- NOW 18" N. PINE N71E 104.3'
- NOW ROTTED N. PINE STUMP WITH LOWER SCAR ON STP.
SEE BOOK 2 Pg. 6

65 T145N-T146N-R27W

Section Cor. Sec. 3-4-33-34
Notes of Orig gov't Survey
of 1873.

Post

"No B.T.s"

56

T145N-T146N- R 27W

Quarter Cor. Sec. 4-33.

Notes of Orig gov't survey
of 1873

Tom 5" N33°E 23 Lks 15.18'

Tom 5" S83°W 15 Lks 9.90'

67

T145N R27W - T145N R26W

Section Cor. Sec. 1-12-6-7

Notes of Orig gov't Survey
of 1873.

J. Pine 5" N41½°W 140 Lks - 92.40'

J. Pine 7" N33°E 88 Lks - 58.08'

J. Pine 8" S84°W 150 Lks - 99.00'

J. Pine 8" S49°E 279 Lks - 184.14'

68

T145N R27W - T145N R26W

Quarter Cor. Sec. 19-24

Notes of Orig gov't survey of
1873

y. Pine 28" N30°E 51 Lks - 33.66'

y. Pine 24" N19½°W 105 Lks - 69.30'

Index No. P-1

Location 19 & 24

Description Co. Mon.

Origin G.L.O.

Referen

69

T145N
R27W - R26W

Section Cor. Sec. 25-26-30-31

Notes of Orig gov't Survey of
1873.

TAM 12" S87½°E 25 Lks - 16.50'

Cedar 8" N86°W 98 Lks - 64.68'

TAM 10" S32½°W 15 Lks - 9.90'

Cedar 5" N36°E 13 Lks - 8.58'

20 Z-17

Standard Cor. Sec. ~~34~~ 34-35

Notes of Orig gov't Survey of
1873

y. Pine 12" N30°E 157 Lks - 103.62'

y. Pine 10" N53°W 75 Lks - 49.50'

Notes of G.L.O resurvey of 1937
set a 2' long 6" dia 20" in ground
w/ brass Cap Marked

Found in good 56

Con'd T145N R27W

12-20-65 534 535

James Ekstrom 1937

Tam 8" N42°E 33 Lks - 21.78'

(Now a 10" N42°E 21.78')

N. Pine 14" N52°W 90 Lks - 59.40

(Now a 14" N52°W 59.40) scribe over ground

71 Z-13

Standard Quarter Cor.
Section 33-34

Notes of Orig gov't Survey
of 1873

' Lind 8" N67°W 89 Lks - 58.74'

' Fir 6" N40°W 63 Lks - 41.58'

5680-11 By Morrison & Tucker, 1962

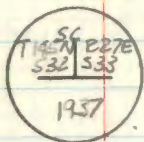
72 2-9

Standard Cor. Sec. 33-38
Notes of Orig gov't Survey
of 1873.

Tam 6" N34°W 3 Lks 1.98'

Tam 7" N62°E 37 Lks 24.42'

1937 GLO Dependent Resurvey



Set an iron post, 3' long, 1" diam., 27"
in the ground w/BC

See Page 10 of Book #3
T145N R27W

5/23/83 Greg Robertson + Dan Harman

Est. one new BT

2 cedars still standing alive

Tam 8.9" N54°W 54.65' marked S325C BT

Tree is double blazed + painted red with a
red ring. 60d spike in base of BT +

FS 54-3 sign nailed up. Distance
measured from 16d nail on E side of
tree.

Z-3

Standard Quarter Cor. Sec. 31
Notes of Orig gov't Survey of
1873.

y. Pine 10" N42°W 12 LKS - 7.92'

y. Pine 13" N78°E 21 LKS - 13.86'

GLO notes of 1937 Dependent Resurvey
Set Proportionate

S. Pine 7" N71¼W 251 lks - 165.66'

N. Pine 12" N43¼W 244 lks - 161.04'

Sept 9, 1981 K. Whitehorn, R. Olson

found N. Pine snag with scribe visible
and badly charred stump with lower part
of blaze visible. Also found GLO brass
cap plowed up an 7'± from position using
bearing trees. See page 3 of Field Notes,
Book 2. Will come back to monument as
we have nothing with us. (in Jack Pine
Plantation)

Sept 29, 1981 K. Whitehorn, R. Olson

Returned to set 2" x 5' iron pipe with ³/₈" brass
cap at record bearing and distance from 1937
bearing trees. Cut new BT's: (see page 3, 4 & 9
of field Book #1)

9" Jack Pine N81°W 21.15'
NOW A STUMP (2009)

12" Norway Pine N27°W 78.63'
NOW 6 FT TALL SNAG (2009)

6" Norway Pine N27°E 55.02'
NOW 8 FT TALL SNAG (2009)

7" Jack Pine N81°E 15.86'
NOW 6 FT TALL SNAG (2009)

Certificate filed 4-7-83

Doc # 268052 (10)

See Book 3, PP 4, 5, 7, 8, 9, 10, 11, 12, 13, 14, 15, 16, 17, 18, 19, 20, 21, 22, 23, 24, 25, 26, 27, 28, 29, 30, 31, 32, 33, 34, 35, 36, 37, 38, 39, 40, 41, 42, 43, 44, 45, 46, 47, 48, 49, 50, 51, 52, 53, 54, 55, 56, 57, 58, 59, 60, 61, 62, 63, 64, 65, 66, 67, 68, 69, 70, 71, 72, 73, 74, 75, 76, 77, 78, 79, 80, 81, 82, 83, 84, 85, 86, 87, 88, 89, 90, 91, 92, 93, 94, 95, 96, 97, 98, 99, 100, 101, 102, 103, 104, 105, 106, 107, 108, 109, 110, 111, 112, 113, 114, 115, 116, 117, 118, 119, 120, 121, 122, 123, 124, 125, 126, 127, 128, 129, 130, 131, 132, 133, 134, 135, 136, 137, 138, 139, 140, 141, 142, 143, 144, 145, 146, 147, 148, 149, 150, 151, 152, 153, 154, 155, 156, 157, 158, 159, 160, 161, 162, 163, 164, 165, 166, 167, 168, 169, 170, 171, 172, 173, 174, 175, 176, 177, 178, 179, 180, 181, 182, 183, 184, 185, 186, 187, 188, 189, 190, 191, 192, 193, 194, 195, 196, 197, 198, 199, 200, 201, 202, 203, 204, 205, 206, 207, 208, 209, 210, 211, 212, 213, 214, 215, 216, 217, 218, 219, 220, 221, 222, 223, 224, 225, 226, 227, 228, 229, 230, 231, 232, 233, 234, 235, 236, 237, 238, 239, 240, 241, 242, 243, 244, 245, 246, 247, 248, 249, 250, 251, 252, 253, 254, 255, 256, 257, 258, 259, 260, 261, 262, 263, 264, 265, 266, 267, 268, 269, 270, 271, 272, 273, 274, 275, 276, 277, 278, 279, 280, 281, 282, 283, 284, 285, 286, 287, 288, 289, 290, 291, 292, 293, 294, 295, 296, 297, 298, 299, 300, 301, 302, 303, 304, 305, 306, 307, 308, 309, 310, 311, 312, 313, 314, 315, 316, 317, 318, 319, 320, 321, 322, 323, 324, 325, 326, 327, 328, 329, 330, 331, 332, 333, 334, 335, 336, 337, 338, 339, 340, 341, 342, 343, 344, 345, 346, 347, 348, 349, 350, 351, 352, 353, 354, 355, 356, 357, 358, 359, 360, 361, 362, 363, 364, 365, 366, 367, 368, 369, 370, 371, 372, 373, 374, 375, 376, 377, 378, 379, 380, 381, 382, 383, 384, 385, 386, 387, 388, 389, 390, 391, 392, 393, 394, 395, 396, 397, 398, 399, 400, 401, 402, 403, 404, 405, 406, 407, 408, 409, 410, 411, 412, 413, 414, 415, 416, 417, 418, 419, 420, 421, 422, 423, 424, 425, 426, 427, 428, 429, 430, 431, 432, 433, 434, 435, 436, 437, 438, 439, 440, 441, 442, 443, 444, 445, 446, 447, 448, 449, 450, 451, 452, 453, 454, 455, 456, 457, 458, 459, 460, 461, 462, 463, 464, 465, 466, 467, 468, 469, 470, 471, 472, 473, 474, 475, 476, 477, 478, 479, 480, 481, 482, 483, 484, 485, 486, 487, 488, 489, 490, 491, 492, 493, 494, 495, 496, 497, 498, 499, 500, 501, 502, 503, 504, 505, 506, 507, 508, 509, 510, 511, 512, 513, 514, 515, 516, 517, 518, 519, 520, 521, 522, 523, 524, 525, 526, 527, 528, 529, 530, 531, 532, 533, 534, 535, 536, 537, 538, 539, 540, 541, 542, 543, 544, 545, 546, 547, 548, 549, 550, 551, 552, 553, 554, 555, 556, 557, 558, 559, 560, 561, 562, 563, 564, 565, 566, 567, 568, 569, 570, 571, 572, 573, 574, 575, 576, 577, 578, 579, 580, 581, 582, 583, 584, 585, 586, 587, 588, 589, 590, 591, 592, 593, 594, 595, 596, 597, 598, 599, 600, 601, 602, 603, 604, 605, 606, 607, 608, 609, 610, 611, 612, 613, 614, 615, 616, 617, 618, 619, 620, 621, 622, 623, 624, 625, 626, 627, 628, 629, 630, 631, 632, 633, 634, 635, 636, 637, 638, 639, 640, 641, 642, 643, 644, 645, 646, 647, 648, 649, 650, 651, 652, 653, 654, 655, 656, 657, 658, 659, 660, 661, 662, 663, 664, 665, 666, 667, 668, 669, 670, 671, 672, 673, 674, 675, 676, 677, 678, 679, 680, 681, 682, 683, 684, 685, 686, 687, 688, 689, 690, 691, 692, 693, 694, 695, 696, 697, 698, 699, 700, 701, 702, 703, 704, 705, 706, 707, 708, 709, 710, 711, 712, 713, 714, 715, 716, 717, 718, 719, 720, 721, 722, 723, 724, 725, 726, 727, 728, 729, 730, 731, 732, 733, 734, 735, 736, 737, 738, 739, 740, 741, 742, 743, 744, 745, 746, 747, 748, 749, 750, 751, 752, 753, 754, 755, 756, 757, 758, 759, 760, 761, 762, 763, 764, 765, 766, 767, 768, 769, 770, 771, 772, 773, 774, 775, 776, 777, 778, 779, 780, 781, 782, 783, 784, 785, 786, 787, 788, 789, 790, 791, 792, 793, 794, 795, 796, 797, 798, 799, 800, 801, 802, 803, 804, 805, 806, 807, 808, 809, 810, 811, 812, 813, 814, 815, 816, 817, 818, 819, 820, 821, 822, 823, 824, 825, 826, 827, 828, 829, 830, 831, 832, 833, 834, 835, 836, 837, 838, 839, 840, 841, 842, 843, 844, 845, 846, 847, 848, 849, 850, 851, 852, 853, 854, 855, 856, 857, 858, 859, 860, 861, 862, 863, 864, 865, 866, 867, 868, 869, 870, 871, 872, 873, 874, 875, 876, 877, 878, 879, 880, 881, 882, 883, 884, 885, 886, 887, 888, 889, 890, 891, 892, 893, 894, 895, 896, 897, 898, 899, 900, 901, 902, 903, 904, 905, 906, 907, 908, 909, 910, 911, 912, 913, 914, 915, 916, 917, 918, 919, 920, 921, 922, 923, 924, 925, 926, 927, 928, 929, 930, 931, 932, 933, 934, 935, 936, 937, 938, 939, 940, 941, 942, 943, 944, 945, 946, 947, 948, 949, 950, 951, 952, 953, 954, 955, 956, 957, 958, 959, 960, 961, 962, 963, 964, 965, 966, 967, 968, 969, 970, 971, 972, 973, 974, 975, 976, 977, 978, 979, 980, 981, 982, 983, 984, 985, 986, 987, 988, 989, 990, 991, 992, 993, 994, 995, 996, 997, 998, 999, 1000

See Book 1, PP 19, 21, 44, 45, 46, 47, 48, 49, 50, 51, 52, 53, 54, 55, 56, 57, 58, 59, 60, 61, 62, 63, 64, 65, 66, 67, 68, 69, 70, 71, 72, 73, 74, 75, 76, 77, 78, 79, 80, 81, 82, 83, 84, 85, 86, 87, 88, 89, 90, 91, 92, 93, 94, 95, 96, 97, 98, 99, 100, 101, 102, 103, 104, 105, 106, 107, 108, 109, 110, 111, 112, 113, 114, 115, 116, 117, 118, 119, 120, 121, 122, 123, 124, 125, 126, 127, 128, 129, 130, 131, 132, 133, 134, 135, 136, 137, 138, 139, 140, 141, 142, 143, 144, 145, 146, 147, 148, 149, 150, 151, 152, 153, 154, 155, 156, 157, 158, 159, 160, 161, 162, 163, 164, 165, 166, 167, 168, 169, 170, 171, 172, 173, 174, 175, 176, 177, 178, 179, 180, 181, 182, 183, 184, 185, 186, 187, 188, 189, 190, 191, 192, 193, 194, 195, 196, 197, 198, 199, 200, 201, 202, 203, 204, 205, 206, 207, 208, 209, 210, 211, 212, 213, 214, 215, 216, 217, 218, 219, 220, 221, 222, 223, 224, 225, 226, 227, 228, 229, 230, 231, 232, 233, 234, 235, 236, 237, 238, 239, 240, 241, 242, 243, 244, 245, 246, 247, 248, 249, 250, 251, 252, 253, 254, 255, 256, 257, 258, 259, 260, 261, 262, 263, 264, 265, 266, 267, 268, 269, 270, 271, 272, 273, 274, 275, 276, 277, 278, 279, 280, 281, 282, 283, 284, 285, 286, 287, 288, 289, 290, 291, 292, 293, 294, 295, 296, 297, 298, 299, 300, 301, 302, 303, 304, 305, 306, 307, 308, 309, 310, 311, 312, 313, 314, 315, 316, 317, 318, 319, 320, 321, 322, 323, 324, 325, 326, 327, 328, 329, 330, 331, 332, 333, 334, 335, 336, 337, 338, 339, 340, 341, 342, 343, 344, 345, 346, 347, 348, 349, 350, 351, 352, 353, 354, 355, 356, 357, 358, 359, 360, 361, 362, 363, 364, 365, 366, 367, 368, 369, 370, 371, 372, 373, 374, 375, 376, 377, 378, 379, 380, 381, 382, 383, 384, 385, 386, 387, 388, 389, 390, 391, 392, 393, 394, 395, 396, 397, 398, 399, 400, 401, 402, 403, 404, 405, 406, 407, 408, 409, 410, 411, 412, 413, 414, 415, 416, 417, 418, 419, 420, 421, 422, 423, 424, 425, 426, 427, 428, 429, 430, 431, 432, 433, 434, 435, 436, 437, 438, 439, 440, 441, 442, 443, 444, 445, 446, 447, 448, 449, 450, 451, 452, 453, 454, 455, 456, 457, 458, 459, 460, 461, 462, 463, 464, 465, 466, 467, 468, 469, 470, 471, 472, 473, 474, 475, 476, 477, 478, 479, 480, 481, 482, 483, 484, 485, 486, 487, 488, 489, 490, 491, 492, 493, 494, 495, 496, 497, 498, 499, 500, 501, 502, 503, 504, 505, 506, 507, 508, 509, 510, 511, 512, 513, 514, 515, 516, 517, 518, 519, 520, 521, 522, 523, 524, 525, 526, 527, 528, 529, 530, 531, 532, 533, 534, 535, 536, 537, 538, 539, 540, 541, 542, 543, 544, 545, 546, 547, 548, 549, 550, 551, 552, 553, 554, 555, 556, 557, 558, 559, 560, 561, 562, 563, 564, 565, 566, 567, 568, 569, 570, 571, 572, 573, 574, 575, 576, 577, 578, 579, 580, 581, 582, 583, 584, 585, 586, 587, 588, 589, 590, 591, 592, 593, 594, 595, 596, 597, 598, 599, 600, 601, 602, 603, 604, 605, 606, 607, 608, 609, 610, 611, 612, 613, 614, 615, 616, 617, 618, 619, 620, 621, 622, 623, 624, 625, 626, 627, 628, 629, 630, 631, 632, 633, 634, 635, 636, 637, 638, 639, 640, 641, 642, 643, 644, 645, 646, 647, 648, 649, 650, 651, 652, 653, 654, 655, 656, 657, 658, 659, 660, 661, 662, 663, 664, 665, 666, 667, 668, 669, 670, 671, 672, 673, 674, 675, 676, 677, 678, 679, 680, 681, 682, 683, 684, 685, 686, 687, 688, 689, 690, 691, 692, 693, 694, 695, 696, 697, 698, 699, 700, 701, 702, 703, 704, 705, 706, 707, 708, 709, 710, 711, 712, 713, 714, 715, 716, 717, 718, 719, 720, 721, 722, 723, 724, 725, 726, 727, 728, 729, 730, 731, 732, 733, 734, 735, 736, 737, 738, 739, 740, 741, 742, 743, 744, 745, 746, 747, 748, 749, 750, 751, 752, 753, 754, 755, 756, 757, 758, 759, 760, 761, 762, 763, 764, 765, 766, 767, 768, 769, 770, 771, 772, 773, 774, 775, 776, 777, 778, 779, 780, 781, 782, 783, 784, 785, 786, 787, 788, 789, 790, 791, 792, 793, 794, 795, 796, 797, 798, 799, 800, 801, 802, 803, 804, 805, 806, 807, 808, 809, 810, 811, 812, 813, 814, 815, 816, 817, 818, 819, 820, 821, 822, 823, 824, 825, 826, 827, 828, 829, 830, 831, 832, 833, 834, 835, 836, 837, 838, 839, 840, 841, 842, 843, 844, 845, 846, 847, 848, 849, 850, 851, 852, 853, 854, 855, 856, 857, 858, 859, 860, 861, 862, 863, 864, 865, 866, 867, 868, 869, 870, 871, 872, 873, 874, 875, 876, 877, 878, 879, 880, 881, 882, 883, 884, 885, 886, 887, 888, 889, 890, 891, 892, 893, 894, 895, 896, 897, 898, 899, 900, 901, 902, 903, 904, 905, 906, 907, 908, 909, 910, 911, 912, 913, 914, 915, 916, 917, 918, 919, 920, 921, 922, 923, 924, 925, 926, 927, 928, 929, 930, 931, 932, 933, 934, 935, 936, 937, 938, 939, 940, 941, 942, 943, 944, 945, 946, 947, 948, 949, 950, 951, 952, 953, 954, 955, 956, 957, 958, 959, 960, 961, 962, 963, 964, 965, 966, 967, 968, 969, 970, 971, 972, 973, 974, 975, 976, 977, 978, 979, 980, 981, 982, 983, 984, 985, 986, 987, 988, 989, 990, 991, 992, 993, 994, 995, 996, 997, 998, 999, 1000

10-27-2009 R MAIN
FD 1983 IRON IN PLACE AND GPS. THE BT'S WERE CUT
OFF ABOVE THEIR TAGS. "ASSHOLES"
TWO NEW BEARING TREES.

R.OAK 4" N52°E 8.60 FT TO SPK NOT SCRIBED

R.OAK 4" N47°W 10.75 FT TO SPK NOT SCRIBED
CORNER IS ± 840 FT NORTH OF FR 2102

Township Cor.
Notes of Orig gov't Survey
of 1873

y. Pine 16 N35°W 60 LKs 39.60'

y. Pine 6 N20°E 43 LKs 28.38'

12-5-82 Ken Whitcomb found 7 inch concrete monument with Brass Tablet, up 1 inch stamped:

SC	
T145N	
R22W	R27W
S14	S11

1937

monument is set inside stove pipe. Also found 2 inch (outside dia) iron pipe with well cap, up 2.2 feet on west side of concrete mon. found steel fence post with 54-2 & 54-4 signs 1.6 feet Easterly. Also found the following BTs:

1937
620

Red Oak 13.7 in ^N88.5° ^W 11.90 ft to 20d nail in south face. Tree scars are overgrown one spot had been chopped out and

Some scribe marks are discernable. Face is in 3 to 4 inch in chise. Distance to blaze from men is 11.60 feet

orig Red Pine Stump 17 1/2 diam 39.54 ft to face of visible "BT" blaze (complete) N34°W

orig Red Pine 23.3 inch N26°E 28.39 to face of lowest deepest blaze. 28.22 to blaze with scribe from later era than original. Original scribe visible on upper blaze

1937
620

White Pine 8.0 in N70°E 15.60 ft to 20d nail in northerly face. Scribing visible

1966
4545

White Spruce 8.7 inch S75.5°E 27.94 ft to 20d spike in northerly face some scribe visible on upper blaze DOWN 10-26-09

1933

Red Pine 21.0 inch N37°E 32.4 ft to base of tree facing corner. 1934 location post or grown into tree

1966
4545

Red Oak 10.8 in N18°W 33.18 ft to 20d nail in easterly face. Scars grown completely over

T145N R22W BK2, PP4
See T145N R27W BK1, PP17
T145N R27W BK3, PP2

75

T145N

V1

25-36-R28W

Section Cor. Sec. 30-31-R27W

Notes of orig gov't survey of
1873.

J. Pine 8" S68°E 16 Lks - 10.56'

J. Pine 6" N54°E 42 Lks - 27.72'

J. Pine 8" S81°W 32 Lks - 21.12'

J. Pine 8" N49°W 50 Lks - 33.00'

See T145N, R27W, BK3, pp 6

10-24-2011 R. MAJEN

GPS IRON

76

T145N R27W - R28W

Quarter Cor. Sec. 30-25
 Notes of orig gov't survey of
 1873

N. Pine 18" S83 $\frac{1}{2}$ W 13 Lks - 8.58'

N. Pine 14" N62°E 26 Lks - 17.16'

77 T145N R27W - R28W

Section Con Sec. 19-30-24-25
Notes of orig gov't survey
of 1873

Tam 6" N82°W 10 Lks - 6.60'

Tam 6" N24°E 16 Lks - 10.56'

Tam 6" S60°W 12 Lks - 7.92'

Tam 4" S39°E 29 Lks - 19.14'

78 T145N R27W - R28W

Section Cor. Sec. 18-19-13-24
Notes of orig gov't survey of
1873

Cedar 8" N42°E 26 Lks- 17.16'

y. Pine 18" S23°W 60 Lks- 39.60'

Balsam - N40°W 11 Lks- 7.26'

Poplar 14 S28½E 32 Lks- 21.12'

79 Affidavit
E-19

Quarter Corner Sections 2-11

Found two bearing trees from the orig. Gov't. survey of 1873.

Tamarack 4 inch (Now a 5 inch dead stub w/ scribe visible) N65°W 70 lks. or 46.2 feet.

Tamarack 3 inch (Now a 5 inch windfall w/ scribe visible) S40°W 38 lks. or 25.1 feet.

Set a 2 inch inside diameter, 5 foot long, galvanized wrought iron pipe filled with concrete and capped with a 3 inch dia. bronze tablet stamped: T145N R27W

$\frac{1}{4}$ S 2
S 11
1958

From which

Rls No 3628

Tamarack 5 inch S40½°E 33.2 feet

Black spruce 6 inch S68°W 33.7 feet

Black spruce 5 inch N11½°W 50.3 feet

IMPROVED TABLES AND INFORMATION

HORIZONTAL STADIA CORRECTIONS

2°-00'	0.1	21°-00'	12.8	33°-00'	29.7
3°-00'	0.3	21°-30'	13.4	33°-15'	30.1
4°-00'	0.5	22°-00'	14.0	33°-30'	30.5
5°-00'	0.8	22°-30'	14.7	33°-45'	30.9
6°-00'	1.1	23°-00'	15.3	34°-00'	31.3
7°-00'	1.5	23°-30'	15.9	34°-15'	31.7
8°-00'	1.9	24°-00'	16.5	34°-30'	32.1
9°-00'	2.5	24°-30'	17.2	34°-45'	32.5
10°-00'	3.0	25°-00'	17.9	35°-00'	32.9
10°-30'	3.3	25°-30'	18.6	35°-15'	33.3
11°-00'	3.6	26°-00'	19.2	35°-30'	33.7
11°-30'	4.0	26°-30'	19.9	35°-45'	34.1
12°-00'	4.3	27°-00'	20.6	36°-00'	34.6
12°-30'	4.7	27°-30'	21.3	36°-15'	35.0
13°-00'	5.1	28°-00'	22.0	36°-30'	35.4
13°-30'	5.5	28°-30'	22.8	36°-45'	35.8
14°-00'	5.9	29°-00'	23.5	37°-00'	36.2
14°-30'	6.3	29°-30'	24.3	37°-15'	36.6
15°-00'	6.7	30°-00'	25.0	37°-30'	37.1
15°-30'	7.2	30°-15'	25.4	37°-45'	37.5
16°-00'	7.6	30°-30'	25.8	38°-00'	37.9
16°-30'	8.1	30°-45'	26.2	38°-15'	38.3
17°-00'	8.5	31°-00'	26.5	38°-30'	38.7
17°-30'	9.0	31°-15'	26.9	38°-45'	39.1
18°-00'	9.5	31°-30'	27.3	39°-00'	39.6
18°-30'	10.1	31°-45'	27.7	39°-15'	40.0
19°-00'	10.6	32°-00'	28.1	39°-30'	40.5
19°-30'	11.2	32°-15'	28.5		
20°-00'	11.7	32°-30'	28.9		
20°-30'	12.3	32°-45'	29.3		

Chains to Feet

1	66
2	132
3	198
4	264
5	330
6	396
7	462
8	528
9	594
10	660

Feet to Chains

100	1.515
200	3.030
300	4.545
400	6.060
500	7.575
600	9.090
700	10.606
800	12.121
900	13.636
1,000	15.151

10-1-96 R MAIN CO. RAUSE
FD MONUMENT UP ONE FOOT IN BLACK SPRUCE SWAMP
± 100 FT SOUTH & EAST OF UPLAND EDGE. FD

Old tag on 6" black spruce snag S18°W 3/5 FT

No longer evidence of original BTs

B Spruce 6" N89°E 12.14' to spruce mark 452 BT

B Spruce 6" S50°W 19.80' to spruce mark 451 BT

B Spruce 5" S2°E 13.51' to spruce mark 4511 BT