

CORNER
RESTORATION
T145N R26W



MINING
TRANSIT BOOK

No. 3840

BOOK # I

CORNER RESTORATION T145N R26W

USFS,
CASS
COUNTY, MN

145-27
BK I Pg 67 →

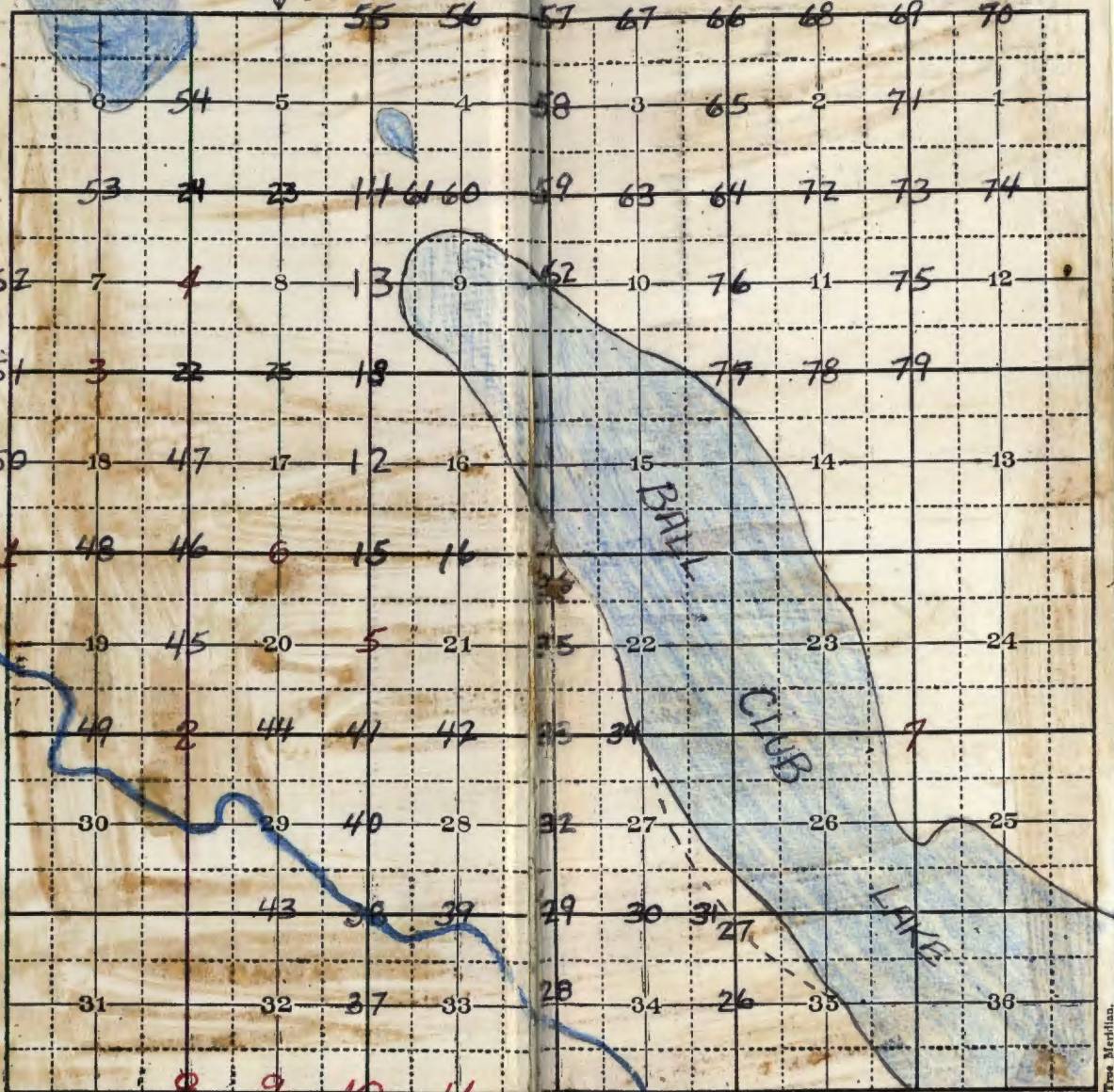
145-27
BK I Pg 68 →
145-27
BK I Pg 3 →

145-27
BK I Pg 69 →

Form 974.

T. 145 N

BK I Pg 7
146-26
R. 26 W



Book #1

FULL BOOK

5th PRINCIPLE Mer.

N-1

SECTION CORNER 18, 19, 13 & 24
Notes of original Gov't. survey of 1873
Set past

Yellow pine 15" N18°E 116 lks 76.6' - Now burned
Norway stump record by dist scribe marks visible
Jack pine 6" N42°W 105 lks 70.0' - Now
jack pine stump record by dist. overgrowth showing
Jack pine 8" S58½°W 46 lks 30.4'
Jack pine 10" S15°E 77 lks 50.8' - Now
rotten pine stump at record. by dist.

CCC. Notes from Bena R.D. of 1940 -
Found stake and B.T. N19°E 116
Set J.P. 13" S41°E 71 lks (46') ¼
marked with axe - Rd Jack pine snag
as described -
located definite stake hole by pulling
this tie from which I then located the
above original B.T.'s.

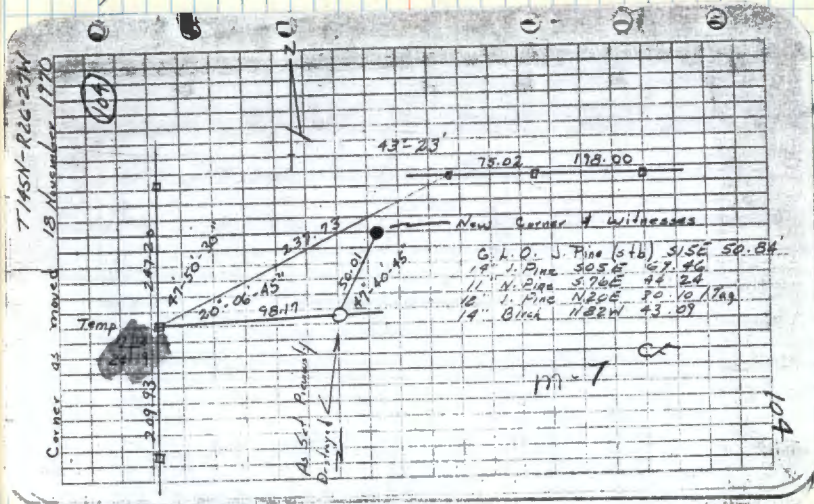
9/17/70
WJ Okerman

Wasca Co. monument - 2" iron pipe with
aluminum cap 15' above ground stamped

T145N	P26W
13 18	
R27W	24 19

Witnessed by:

Birch 14" N26°E 21.9' scribed S18BT
Jack pine 14" N86°W 42.0' scribed S24BT
Jack pine 6" S53°E 12.9' scribed S19BT
Jack pine 6" S20°W 32.4' scribed S24BT



STAKE WHOLE by pinning this tie
from which that located the
above original B.T's.

R-5

Section Corner 19, 20, 30, 29

Notes of original Govt Survey of 1876

Set past

N. Pine 18" S50°E 251ks

J. Pine 7" N62°E 241ks

J. Pine 10" N18°W 471ks

J. Pine 10" S72°W — (No dist)

CCC notes from Bernard of 1941
found 10' high snag - in good shape
1957

Now all obliterated by indiscriminate
shearing operation

8/28/70

wfo

21

Index No. R-5	ITASCA COUNTY LAND CORNER RECORD				T. 145	R. 26	5th
Location 19-20-29-30	Description Corner gone because of indiscriminate shearing operation						
Origin	G.L.O. <input type="checkbox"/>	R.S. <input type="checkbox"/>	S.R. <input type="checkbox"/>	SUB. <input type="checkbox"/>	SET <input type="checkbox"/>		
Reference				Corner Perpetuation Record			
1876 G.L.O.	Corner Mon.		Found/Date		Set/Date		
1941 U.G.C. fd. 10' high snag in good shape	Date	Wht.	Size	Bearing	Dist.	Remarks	
1957 fd. snag							
1966 Itasca Co. fd. snag and set cor.							
1970 U.S.F.S. fd. all info. obliterated by shearing oper.							

J-23

1/4 Corner between 7th 18

Notes of original Gov't. survey of 1876

Set post - Found old post down, but hole was clear and defined in the ground

Jackpine 6" N40°E 20lks - Now jackpine stump with scribe marks visible at record brg & dist.

Norway pine 14" S12°E 36lks - Now red pine stump at record brg & dist.

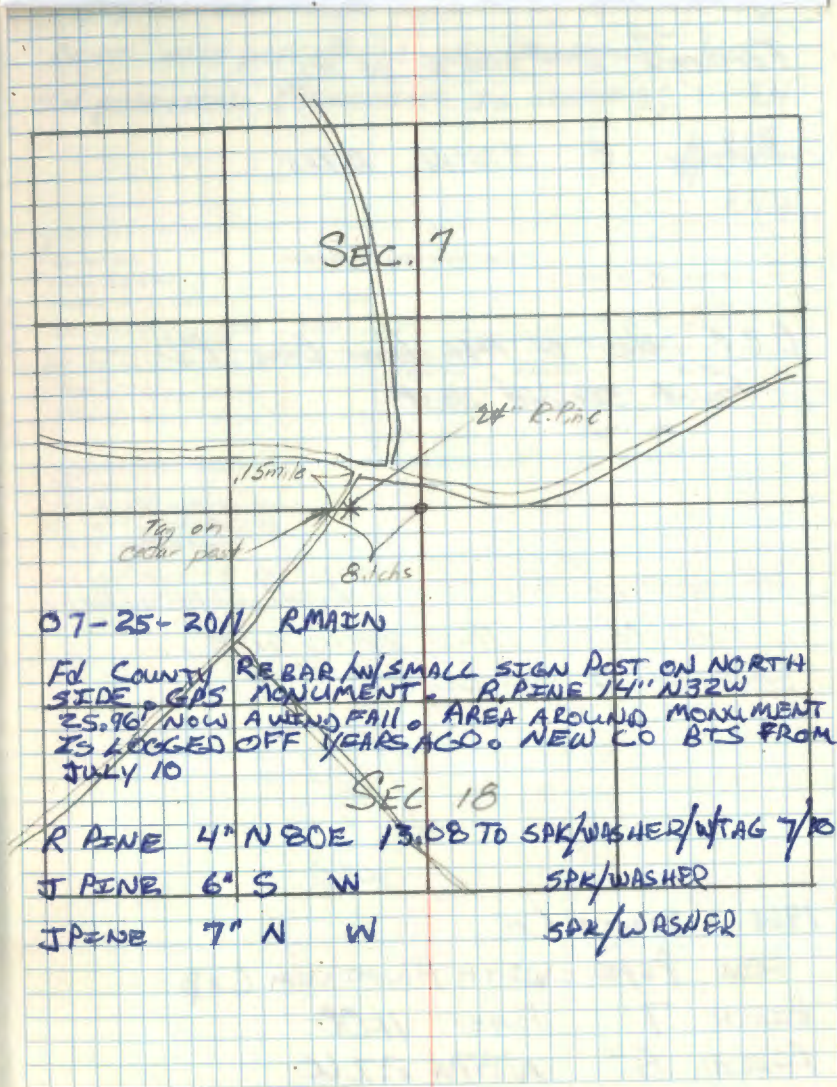
C.C.C. notes from Bena R.D. - found evidence of both B.T.'s in 1940 and probably established or found another B.T. -

Jackpine 8" N70°E no dist. - jackpine log lies N70°E

Found Hasca Co. aluminum capped corner 73.5 feet S10°W of true corner location.

10/22/70 Jack Shannon, Hasca Co. Surveyor agreed to move their monument to proper location next week. No further work needed by Forest Service - Check 7/1/21

W.D. Kernan



J-23

1/4 Corner between 7 & 18
Notes of original Gov't. survey of 1870

Set post - Found old post down, but hole
clear and defined in the ground

Jackpine 6" N40°E 20lks - Now gone

Stump with scribe marks visible at record bry

Norway pine 14" S12°E 36lks - Now gone

stump at record bry & dist.

C.C.C. notes from Bena R.D. - found evi
of both B.T.'s in 1940 and prob
established or found another B.T. -

Jackpine 6" N70°E no dist. - jackpine
lies N70°E

Found Hasca Co. aluminum capped corner
73.5 feet S10°W of true corner location.

10/22/70 Jack Shenners, Hasca Co. Surveyor
agreed to move their monument to proper
location next week. No further work
needed by Forest Service - Check
7/1/71

W.C. Okerman

Index No. J-3

ITASCA COUNTY LAND CORNER RECORD

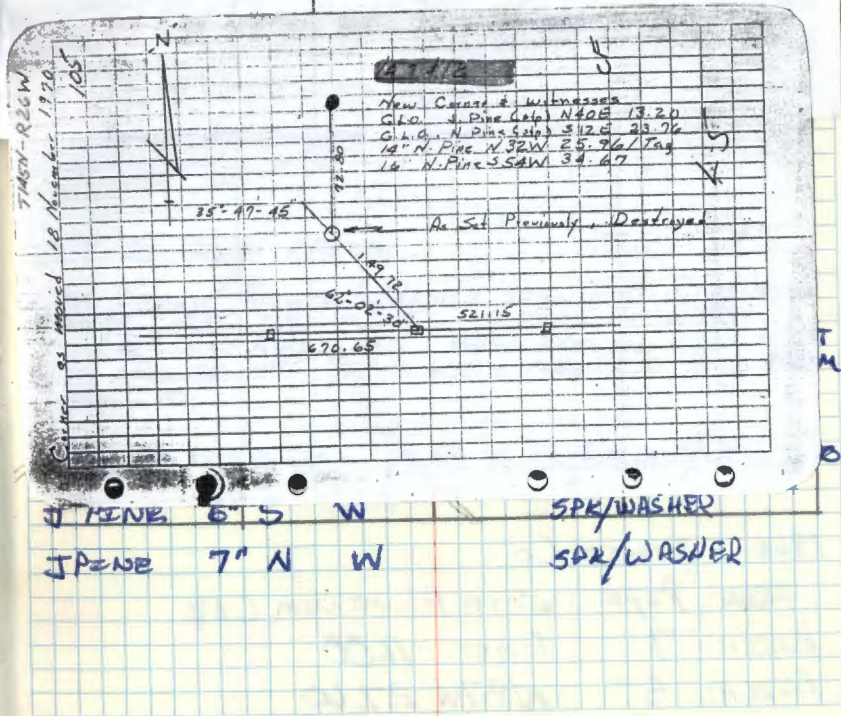
T. 145 R. 26 PM 5th

Location 7-18

Description Itasca Co. Mon.

Origin G.L.O. R.S. S.R. SUB. SET

Reference	Corner Perpetuation Record				
	Date	Wit.	Size	Bearing	Set/Date
1876 G.L.O.	11/18/70				
1940 C.C.C. note that they fd. evidence of both B.T.'s. and another wit.					
1970 U.S.F.S. fd. wit. and evidence of location					
1970 Co. Mon. was set by County.					
	11/18/70	G.L.O. J. Pine 6"		N40°E	20lks.
		1970 Now a J. Pine Stp. with scribe marks visible at recorded bearing and distance			
		G.L.O. N. Pine 14"		S12°E	36lks.
		1970 Now R. Pine stump at recorded bry. & dist.			
	11/70	N. Pine 14"		N32W	25.96' Tag
	11/70	N. Pine 16"		S54W	34.67'



G-5

1/4 Corner between 7 & 8
Notes of original Gov't. Survey of 1876
Set post

Tamarack 6" S85°E 14 1/2

Jackpine 8" S76°W 15 1/2

C.C.C. notes of 1941 from Bena R.D. —
Found scribed post

No evidence found — Cut out survey line
runs N 5 thru search area
Searched 4 men hours

8/28/70

who

1966 ITASCA Co

IRON PIPE WITH ALUMINUM CAP
BIRCH 7" EAST 11.00
BIRCH 5" N87°W 27.60

1988 R. MAX J. JACKSON D. ROERCK

Fd 1 1/2" IRON PIPE WITH 2 1/2" ALUMINUM CAP
BENT WITH PART OF THE CAP BROKEN OFF BUT
IN POSITION. MONUMENT IS STAMPED; T 145 N

1/4 718
R26W

Reference		Corner Perpetuation Record			
Date	Wit.	Size	Bearing	Dist.	Remarks
8/28/70	FS				
GLO-BC BA10 W/1/4 1876 A1/4					
TAM 6" S85°E MARKS.					
J. PIPE 8" S76°W 15 1/2.					
CCC- INFORMATION B7A-9					
"NO STAKE"					
"NO 8" TAM WITH AS S.C.B.					
CCC NOTES OF 1941 BENA RD.					
FOUND SCRIBED POST					
Loose Leaf TOWNSHIP BK Pgs 63, 64, 110					
6/91 in Aullman OWN Corner present with					

P-9

1/4 Corner between 20 & 21
Notes of original Gov't. Survey of 1876
Set post

Norway pine 18" N88°E 33 lks - Now large
stump hole at record brg & dist.

Norway pine 8" N15°W 54 lks - Now pine stump
at record brg & dist with scribe marks visible; old
tag on stump

From Bona R.D. in 1958 by R.H.L.
Tag on stump on west side of road

Several Hasco Co. B.T.'s found - no monument

8/26/70
WHO

Placed spike in west wheel track
of roadway - should monument if
Co. does not do by 7/77

Index No. P-9

ITASCA COUNTY LAND CORNER RECORD

Location 1/4 20 & 21

T. 145 R. 26 P.M. 5th

Description Co. Mon. (not stamped) flush/Alum. post-Tag 7' W. S trail

Origin

G.L.O. R.S. S.R. SUB. SET

Reference

Corner Perpetuation Record

1876	Wood Post	8/25/70 FS		Found/Date		Btu/Date	
		Date	Wit.	Size	Bearing	Dist.	Remarks
	N. Pine, 18", N88°E, 33 lks (21.78')			8"	N15W	35.64'	stp
1966	N. Pine, 8", N15°W, 54 lks (35.64')	GLO	N. Pine	20"	N50W	15.74'	*16.12'
	L.L. Field BK Pg. 58	10/66	N. Pine	20"	N50W	15.74'	*16.12'
	Found 1 Gov't BT NW	10/66	J. Pine	8"	N25E	60.85'	*61.00'
1989	Field BK #1 Pg. 14	8/89	N. Pine	20"	S33°E		*73.31'

*Distances are to 60d/vanishers

N-7

1/4 Corner between 17 & 20
Original Gov't. survey notes of 1876
Set post

Norway pine 18" N79°E 26.1ks (17.2') - New
pine stump at record brg & dist.

Norway pine 18" S64°E 26.1ks (17.2') - New
pine stump with flat spot facing corner

C.C.C. notes of 1940 from Bena R.D.
Found squared stake & 2 B.T.'s.

Found Hasco Co Aluminum capped iron
monument & old squared oak post

T145N

1/4

17
20
R20W8/26/70
U.S.

Co. Ties measured in field

R. Pine 20" N24°W 88.4 Sanded 1/4 S17 BT

R. Pine 22" N65°E 70.5 " 1/4 S17 BT

Tag on 20" R. Pine on S. side of road
400'± N. of corner

6

Index No. N-7
Location 17 & 20
Description 1/4 Corn.
Origin G.L.O. R.S. S.R. SUB. SET
Reference
T. 145 R. 20 P.M. 5th
Corner Perpetuation Record

8/26/70 FS Corner Mon.		Found/Date		Set/Date		Remarks
Date	Wit.	Size	Bearing	Dist.		
10/66	N. Pine	20"	N32°W	87.49'		
10/66	N. Pine	24"	N57°E	69.75'		

R-21

Section corner 23, 24, 25 & 26
 Notes of original Gov't. survey of 1876
 Set past

Cedar 13" N8°W 3071ks

Cedar 14" N4°E 3081ks

C.C.C. notes from Bene R.D. 1940
 Found scribed past dow 3' west of fence
 intersection

Wt. Oak NE of past may be B.T. grown over.

Fd Hasca County monument marked T145N

23|24

CoK6 scribed wood past

26|25

R26W

New B.T.

Elm 6" S70°E 4.5 feet scribed S25 BT

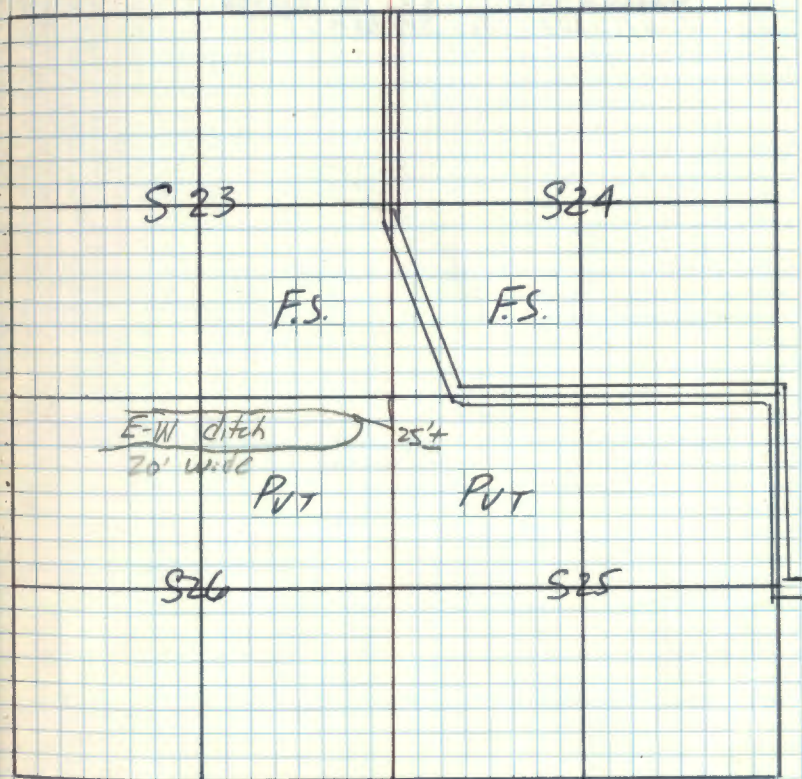
Index No. R-21
 Location 23-24-25-26
 Description Co. Mon.
 Origin G.L.O. R.S. S.R. SUB SET

ITASCA COUNTY LAND CORNER RECORD

T. 145 N. R. 26 W. P.M. 5th

Reference Corner Perpetuation Record

1970 FS Corner Mon.		Found/Date		Set/Date	
Date	Wt.	Size	Bearing	Dist.	Remarks
4/66	Elm	4"	S50E	18.83'	
4/66	Elm	12"	East	63.90'	
4/66	Oak	10"	N32E	49.50'	
1970	Elm	6"	S70E	4.50'	



12-5

STANDARD SECTION CORNER To
SECTIONS 31 & 32

SEE BOOK # 2, PAGE # 22
T144N, R26W

CERTIFICATE FILED

6/12/79 by Stefan

8

Z-7

STANDARD QUARTER CORNER
TO SECTION 32

SEE BOOK # 2, PAGE # 25
T144N, R 26W

CERTIFICATE FILED 6/14/79

9

2-9

STANDARD SECTION CORNER To
SECTIONS 32433

SEE BOOK #2, PAGE #27
T144N, R26W

CERTIFICATE FILED

6/12/79 by stein

10

Z-11

STANDARD QUARTER CORNER TO
SECTION 33

SEE BOOK #2, PAGE #29
T144N, R26W

CERTIFICATE FILED

6/12/79 by Stefan

11

1/4 cor sec 16 & 17

Survey by Itasca County 1966

Record in County Court House

FOUND ORIGINAL RPINE WEST 7 LKS 462'

Set 1 1/2" Iron pipe w/ Alu. Cap.
from which bears

N. Pine 7" N30W 43.92'

(Now 9" N17°W 43.32')

J. Pine 12" N80W 17.70'

(Now 12" N41W 17.20')

To perpetuate. This corner I cut
New BT'Birch 5" N67E 11.83'
(scribed 1/4 516 BT)8' steel sign post North 6.2'
w/ signs 54-2 & 54-41876
GLO SET WOOD POST

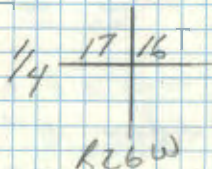
ABRWAY PINE 18" WEST 7 LKS

J PINE 6" S24E 9 LKS

4/30/79
Ronald O'Brien

Pct. made of iron 207

10-1-85 B. AUST Contract

Found a 1 1/2" Iron Pipe with ALUMINUM
CAP UP 1.0' STAMPED AS SHOWN =
11451V

From which =

Birch 6.3" N67°E 11.83' Double BLAZE
Scr. "1/4 516 BT"J. Pine 12.5" N41°W 17.83' Double BLAZE
8' stub Scr. "1/4 517 BT"P. Pine 9.0' N12°E 43.35' Double BLAZE
Dead Scr. "1/4 517 BT"

STEEL SIGN POST OK

1986 WORKERMAN

FOUND CORNER AS IN 1985.

BTS
ROAK 7" N4°E 128.52'

BIRCH 5" N67E 11.83'

BIRCH 10" S38E 33.12'

REFER TO CERT OF LOCATION #382735

G-9

1/4 corner sec 859
 Survey by Itasca County 1966
 Record in County Court House

set 1 1/2" Iron pipe with Alu. Cap

From which bears

Cedar 5" N 80 E 12.48'

(Now 5" N 60 E 12.48')

Cedar 5" S 55 W 6.9'

Now 7" S 49 W 6.9'

To perpetuate this corner I cut
 New BT

Cedar 8" N 88 W 7.10'

(sailed 1/4 88 BT)

8" long steel sign post South 14.9'

8/30/79
 Ronald Olson

13

Ced made 2/1/80 M.C.H.

Index No. G-9

ITASCA COUNTY LAND CORNER RECORD

Location 1/4 B. & 9

T. 145 R. 26 P.M. 34h

Description Co. Mon.

Origin

G.L.O. R.S. S.R. SUB. SET

Reference

Corner Perpetuation Record

8/30/79 FS

Corner Mon.

Found/Date

Set/Date

Date

Wit.

Bearing

Dist.

Remarks

1966 Cedar

5"

N 70 E

12.48'

1966 Cedar

5"

S 55 W

6.90'

8/79 Cedar

8"

N 88 W

7.10'

8/79 Steel post

South

14.90'

E-9.

Sec Corner sec. 4, 5, 8 & 9
 Survey by Itasca County 1966
 Record in County Court House

Set Iron pipe w/ Alu. Cap

(Now gone)

from which bears

N. Pine 30° N45E 23.45'

(Now gone)

W. Oak 8" 553W 12.8'

(Now 9" 560W 12.8')

J. Pine 8" 577E 24.12

(Now 10" 570E 24.12)

To perpetuate this corner I set
 a new Monument 2" x 3" iron pipe w/ brass cap
 flush with ground marked.



from which bears

R. Pine 4 12° 52° E 22.03'

(scribed T145N R26W 59 BT)

W. Oak 5° N71W 44.80'

T145N R26W 55 BT

Card made 2/4/60 MZ

14

Index No. E-9 ITASCA COUNTY LAND CORNER RECORD
 Location Sec 5, R 26 T. 145. R. 26 P.M. 5th
 Description Brass cap Mon. flush with ground.
 Origin G.L.O. R.S. S.R. SUB. SET

Reference		Corner Perpetuation Record				
1979 PS		Found/Date			Set/Date	
Date	Mon.	Size	Bearing	Dist.	Remarks	
1966	W. Oak	8"	S53W	12.80'		
1966	J. Pine	8"	S77E	24.12'		
1979	R. Pine	12"	S02E	22.03'		
1979	W. Oak	5"	N71W	44.80'		
1979	Steel post	8'	South	56.10'		

ORIG. GOV'T. SURVEY 1876

SET WOOD POST

N. PINE 28 SBW 176 LKS. = 83.16'

BIRCH 4 571E 218 LKS. = 143.88'

J. PINE 4 N60W 136 LKS. = 89.76'

J. PINE 5 N9E 110 LKS. = 72.60'

Set 8' steel sign post South 56.1'
 with sign 54-2

5-18-2010 R. MAEN

IRON IS 120 FT EAST OF CO RD 39 AND 15 FT SOUTH
 OF E PVT ROAD. GPS ED.

N-9

Section Corner 16, 17, 20 & 21

Survey of Itasca County. 1966
Record in Itasca County Court House

set County Monument

from which bears

TAM 4" N75W 5.1'

(Now 6" N60W 5.17')

TAM 5" S40W 12.9'

(Now 7" S45W 12.98')

TAM 5" N20E 24.15'

(Now 7" N30E 24.15')

TAM 4" N85E 13.7'

(Now 6" East 13.75')

I set

Steel post 8' Long North 3.6' w/sign 54-2

Steel post 8' Long East 4.2' w/sign 54-2/54-9

9/11/81 Ronald Ober

1986 W. OLKEMAN

FOUND CORNER AS RECORDED IN 1981.

REFER TO CERT OF LOCATION # 382738

R9-7150-4

15

10-1-85 B. AUK CONTRACT

Found A 2 1/2" IRON PIPE with
A ALUMINUM CAP up 6" STAMPED

AS SHOWN:

1145N

1716

2021

R26W

FROM WHICH:

TAM. 6.3" N60°W 5.17'

TAM. 7.0" S45°W 12.98'

TAM. 6.3" N30°E 24.15'

TAM. 6.5" N85°E 13.75'

Both Metal Sign Posts ARE OK

ALL TREES Double Blazed Scribing OVERGROWN

1876 BC BALDWIN

SET Wood Post

TAMARACK 5" S17E 51ks 3.3'

TAMARACK 6" N42E 21ks 13.86'

TAMARACK 6" N38W 18ks 11.88'

TAMARACK 6" S86W 12ks 7.92'

N-11

Quarter Corner 16 § 21

Survey of Itasca County 1966
Record in Itasca County Courthouse

Set County Monument

(found 12" x 3" Iron w/Alu. Cap)

from which bears

W. Oak 7" S45W 29.9°

(Now 9" S53W 29.9°)

W. Oak 11" N5E 28.8°

(Now 13" N9E 28.95°)

I cut New BTS

W. Oak 13" N88W 59.30° 1/4 516 BT

set Steel Post 8" Long North 4.0' w/sign 54-2

Steel Post 8" Long West 4.0' w/sign 54-2

9/11/81 Ronald Olson

1986 W. OKERMAN

FOUND MONUMENT AND REFERENCES IN GOOD
CONDITION. REFER TO CERT OF LOCATION #38273Z

RA7150-4

16

10-1-85 B. AUSK Contract

Found A 1 1/2" IRON PIPE with
A ALUMINUM CAP UP 20" STAMPED

As shown:

1145N

1 1/2 16
4 21

R26W

From which

W. OAK 13.8" N88°W 59.30' Double BLAZE
Scr. "1/4 516 BT"

W. OAK 88" S53W 29.9' Double BLAZE
SCRIBE OVERGROWN

W. OAK 13.0" N9E 28.95' Double BLAZE
SCRIBE OVERGROWN

Both Sign Post OK.

Put FSLP N Edge of wood Road
760' ± INTO N 1/4 S21 ON A 12" K. PINE

Standard Corner Common to
Sections 34 & 35

5-3-83 Ken Whitcomb & Bill Ansk
found $\frac{1}{2}$ inch (ID) iron pipe
down 0.5 ft, 8 ft SWtly of E
Rd grade. Also found location
post on J. Pine SEtly.
Find: 5° E decl.

J. Pine 10.7 in $N15^{\circ}$ E 28.50 ft to
2nd nail in the Southeastly face of tree
double blazed & scribed "535" & BT
28.16 ft to face of base blaze between the
"B" & the "T"

71.81 J. Pine 15.2 in $N29\frac{1}{2}^{\circ}$ W 72.30 ft to
2nd nail in the southwestly face of
tree, double blazed and scribed
"534" and "BT".
71.81 ft to face of base blaze between "B" & "T"

No evidence of original BT Find.
60d spike vert in base blaze.
BT Tags & Red Enamel

Set 8' steel face post 3.0 ft westly of
corner - attached 54-2 & 54-9 signs

Reference		Corner Perpetuation Record					
Date	WH.	Size	Bearing	Dist.	Set	Ref.	
1967	J. Pine	12"	N10W	71.90'			
1967	J. Pine	6"	N25E	28.15'			

J-9 CORNER TO SECTIONS 8, 9, 16 & 17

1876 B.C. Baldwin

SET WOOD POST

J PINE	8	S62W	3 LKS	1.98'
J PINE	8	S60E	3 LKS	1.98'
J PINE	8	N50W	13 LKS	8.58'
J PINE	8	N81°E	13 LKS	8.58'

1939 ITASCA CO

MADE REFERENCE TO CORNER

ASPEW		S50E	4.9'
J PINE		W	48.1'

1966 ITASCA CO

FOUND EVIDENCE OF 1939 CORNER POSITIONS.

SET CO IRON MONUMENT STAMPED

ROAK	6"	N50E	8.7'	GOOD CONDITION 1986	T145N
BIRCH	8"	N37W	20.92'	STAND DEAD FEB	8 9
SPRUCE	10"	S76W	52.34'	GONE	17 16
					R26W

1976 ITASCA CO

FOUND MONUMENT WITH 1939 & 1966 REFERENCES

ELM	5"	S45E	38.92'	STANDING DEAD FEB
MAPLE	5"	N85W	18.34'	GOOD CONDITION 1986

1979. J. SCHOONOVER

FOUND MONUMENT WITH 1966 & 1976 BTS IN GOOD CONDITION.

NEW REFERENCE

8" STEEL SIGN POST NORTH S. 45°

1986. W. OKERMAN

FOUND MONUMENT

NEW BTS

W OAK 7" S68W 56.34'

R. PINE 21" S70E 140.25'

8" STEEL SIGN POST 4' NORTH & SOUTH

REFER TO CLRT OF LOCATION H. 382740

5-9

SECTION CORNER 8, 9, 16, 17

10-1-85 B. AUSK CONTRACT

Found A 1 1/2" IRON PIPE WITH A
ALUMINUM CAP UP 18" STAMPED
AS SHOWN:

T145N

8 9

17 16

R26W

FROM WHICH

R. OAK 9.3" N50°E 8.70'

DEAD SCRIBE OVERGROWN Double BLAZE

ELM 9.7" S48°E 79.0'

SCRIBE VISIBLE Double BLAZE

MAPLE 9.1" N81°W 18.35'

SCR. "S B BT" Double BLAZE

DEAD BIRCH 9.1" N30°W 20.75'

SCR "S B BT" Double BLAZE

METAL FENCE Post North 5.0' w/54-2, 4

FSLP 105' North on S. edge of
woods Road

19

N-12-13 MEANDER WEST SHORE BALL CLUB LAKE

1876 B.L. BALDWIN

SET POST

BT

WILLOW 4" S78W 35LKS 23.1'

WILLOW 4" N85W 34LKS 22.44'

1967 ITASKA COUNTY

SET COUNTY MONUMENT

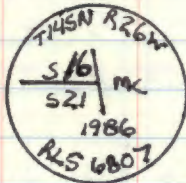
BT

ELM 7" S28W 71.25'

1986 W. OKERMAN

NO EVIDENCE FOUND OF COUNTY MONUMENT. CORNER
WAS REESTABLISHED AT ORIGINAL SURVEY DISTANCE FROM
THE SOUTH QUARTER CORNER. SET 5' IRON MONUMENT
WITH BRASS CAP 1 FT ABOVE GROUND.

MONUMENT STAMPED;



BT'S

ASH 7" N81W 166.2'

ASH 5" S45W 107.38'

1986 CONT

ASH 8" N51W 71.25'

8' STEEL SIGN POST WEST 4'

REFER TO CERT OF LOCATION #382736

J-10-11 MEANDER SEC 9-16 WEST SHORE BALL CLARK

1876 B.C. BALDWIN

SET WOOD POST

WILLOW 4" S60W 16 LKS 10.56'

ASPEN 6" N75W 58 LKS 38.28'

1976 ITASCA CO.

SET ITASCA CO MONUMENT

CABIN SE CORNER S06°W 35.7'

CABIN NE CORNER S55W 21.03'

ELM N58W 59.35' SAWEA FLUSH WITH
THE GROUND

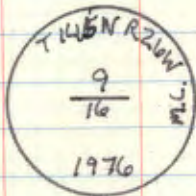
1986 WOKERMAN

FOUND MONUMENT FLUSH WITH GROUND.

NEW BT

ASH 10" N42W 99.02' NO SCRIBE

REFER TO LEFT OF LOCATION # 382739



J-5 SECTION CORNER 7-8-17-18

1876 ORIGINAL GOVT SURVEY

SET WOOD POST

TAM 3" S15W 193
TAM 3" S19E 270
TAM 4" N45E 403
NOR PINE 10" N85W 450

1966 ITASCA Co

Co IRON

GLOPINE ' N85W 297.00
TAM ~~5"~~ 4" S80W 11.25
TAM 6" S06E 33.30
TAM 5" N16W 39.55
TAM 3" N80E 29.85

1988 R MAIN

Found 1 1/2" IRON PIPE WITH ALUMINUM
CAP 6" ABOVE GROUND. MONUMENT STAMPED:

BEARING TREE DISTANCES ARE
PULLED TO SCRIBE.

T145N
718
1817
R26W

7-25-11 R. MAIN
GPS IRON.

WITNESSED BY COUNTY BT'S

TAMARACK 5" S88W 11.25
TAMARACK 6" S1°W 33.30
TAMARACK 6" N7W 39.55
TAMARACK 5" N88E 29.85

E-7 QUARTER CORNER SECTION 5-8

April 1876 B. C. BALDWIN ORIG GOUT SURVEY

SET WOOD POST WITNESSED BY.

J. PINE 8" NBE 29 LKS 19.14 FT

10/2/91 2.8' HIGH STUB NBE 19.14 FT TO BT BLAZE

J. PINE 5" S61W 18 LKS 11.88 FT

10/2/91 17" S61W 11.88 FT TO BT BLAZE

1/19/40 E. M. HANDY 874-9

Fd J. PINE BT 13" MKD $\frac{1}{4}$ SB BT

2/10/59 874-9

OBSERVED BOTH BEARING TREES W/ SCRIBE. TAG
ON SOUTH SIDE OF 14" J. PINE NO DIST. & BEARING
STATED.

1965 S. MORRISON U.S.F.S.

Fd BT W/ TAG. ALSO Fd BT STUMP.

7/1966 E. PELLOQUEN ITASCA CO

Fd 610 EVIDENCE AND SET COUNTY MONUMENT

J. PINE 5" N15W 12.60

DEAD 6' STUB N7W 12.60 SCRIBE VISIBLE

J. PINE 3" N70E 13.65

DEAD 4' STUB N75E 13.65 SCRIBE VISIBLE

10/2/91 R. MAIN

Fd COUNTY MONUMENT 1" IRON PIPE W/ 2"

ALUMINUM CAP UP 1.2 FT AND MKD T145N

CORNER ± 20 FT NORTH FR #3732

 $\frac{1}{4}$ $\frac{15}{8}$
R26W

WITNESSED BY

R. PINE 9" N75W 37.60 FT MKD $\frac{1}{4}$ SB BT

NOW 6' TAIL SNAG

R. PINE 8" N15E 18.35 FT MKD $\frac{1}{4}$ SB BT

LOGGED OFF

BT BEST TO SPK BEARINGS TRUE.

8 FT STEEL SIGN POST SOUTH 3.2 FT OK

6-21-2011 R. MAIN

GPS IRON SAW TWO COUNTY BTS DIDN'T HAVE
CURRENT INFO.

E-5 SECTION CORNER 5-6-7-8

4 APRIL 1876 B.L. BALDWIN OREG GOUT SURVEY

SET WOOD POST AND WITNESSED.

TAMARACK 6 S5°E 74 48.84'

TAMARACK 7 S9°W 72 47.52'

TAMARACK 7 N65°E 17 11.22'

TAMARACK 8 N3°W 30 19.8'

1/19/40 E.M. HANDY 874-9

STATES HE FOUND A CEDAR STUMP BT. I ASSUME

IT WAS TAMARACK.

FROM ITASCA COUNTY CORNER CARD 1967

NOTHING ABOUT MONUMENT

TIES ON CORNER CARD

7 CEDAR 5 N48°E 51.50'

7 CEDAR 7 S5°W 25.55'

7 CEDAR 9 S45°E 44.10'

6/98 DNR Fd. TIES - NO MONUMENT

6-21-2011 R. MAIN

Fd NEW COUNTY MONUMENT AND GPS.

J-7 QUARTER CORNER 8-17

1876 B.L. BARKWEN ORIG GOUT SURVEY

SET WOOD POST AND WITNESSED.

ASPEN 7" N3°E 8 1/2 5.28 FT

R. PINE 10" N56W 16 1/2 10.56 FT

INFORMATION ON ITASCA COUNTY CORNER CARD

1967

J. PINE 9 S10W 20.70'

BIRCH 7 N55E 16.80'

QUARTER CORNER BET. SEC'S. 34+35

ORIG. GOV'T. SURVEY 1876

SET WOOD POST

N. PINE 18 N31W 73 LKS. = 48.18'

N. PINE 20 N41E 131 LKS. = 86.46'

Reference		Corner Perpetuation Record				
Corner Mon.	Found/Date			BE/DATE		
Date	Wt.	Size	Bearing	Dist.	Remarks	
		N. Pine	8"	S83W	108.43'	
		N. Pine	16"	S50E	90.75'	

27

MEANDER CORNER BET. SEC'S. 34+35
 ORIG. GOVT. SURVEY 1876
 SET WOOD POST

TAM. 3 S73W 49 LKS = 32.34'

TAM. 3 S10W 85 LKS = 56.10'

27

NORTH BET. SEC'S. 34+35
 GOVT. CHAIN 75.17 CHS. = 4961.22'

WITNESS COR. TO 1/4 CORNER BET. SEC'S. 33 & 34

ORIG. GOV'T. SURVEY 1876

MARKED N. PINE 16" FOR COR.

N. PINE 18 N73W 140 LKS. = 92.40'

J. PINE 5 S80E 22 LKS. = 14.52'

NORTH BET. SEC'S. 33 & 34
GOV'T. CHAIN 46.53 CHS. = 3070.98'

Reference		Corner Perpetuation Record			
Corner Mon.	Found/Date	Size	Bearing	Dist.	Remarks
Date	Wit.				
1967	J. Pine	10"	S45W	7.95'	
1967	J. Pine	10"	S18E	14.30'	

CORNER TO SECTIONS 27-28-33+34
 ORIG. GOV'T. SURVEY 1876
 SET WOOD POST

N. PINE 7 N39W 149 LKS = 98.34'

J. PINE 10 N16E 236 LKS = 155.76'

OAK 4 S35W 68 LKS = 44.88'

J. PINE 3 S81E 210 LKS = 138.60'

No. 1-13
 Section 27-28-33-34
 Description Co. Mon.

ITASCA COUNTY LAND CORNER RECORD

T. 145 R. 26 P.M. 5th

Origin

G.L.O.

R.S.

S.R.

SUB.

SET

Reference

Corner Perpetuation Record

Date	Corner Mon.	Wtl.	Size	Found/Date	Bearing	Dist.	Set/Date	Remarks
12/1/76								
12/76	N. Pine		30"		N39W	98.34'		
12/76	J. Pine		9"		East	30.20'		
12/76	J. Pine		10"		S33E	28.55'		
12/76	Oak		5"		S05E	34.47'		
12/76	Oak		11"		S34W	47.31'		

MEANDER CORNER BET. SEC'S. 27+34
 ORIG. GOVT. SURVEY 1876
 SET WOOD POST

TAM. 3 S59W 27 LKS = 17.82'

TAM. 3 N65W 38 LKS = 25.08'

EAST TRUE LINE BET. SEC'S. 27+34
 GOVT. CHAIN 77.00 CHS. 5082.0'

32

QUARTER CORNER BET. SEC'S. 27+28

ORIG. GOV'T. SURVEY 1876

SET WOOD POST

J. PINE 9 N44W 10 LKS = 6.60'

J. PINE 7 S82E 33 LKS = 21.78'

32

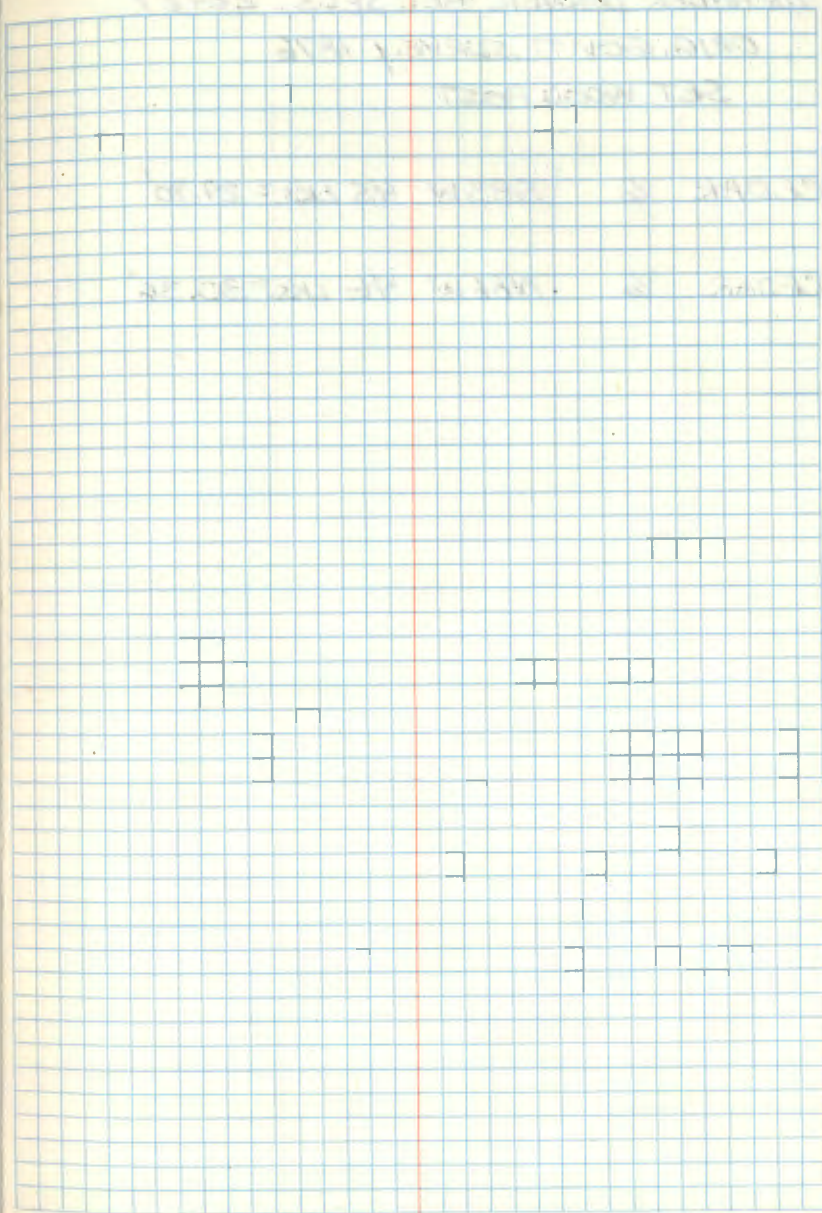
CORNER TO SECTIONS 21-22-27+28
 ORIG. GOVT. SURVEY 1876
 SET WOOD POST

N. PINE 26 S72E 52 LKS = 34.32'

N. PINE 26 N71E 134 LKS = 88.44'

N. PINE 8 S24W 294 LKS = 194.04'

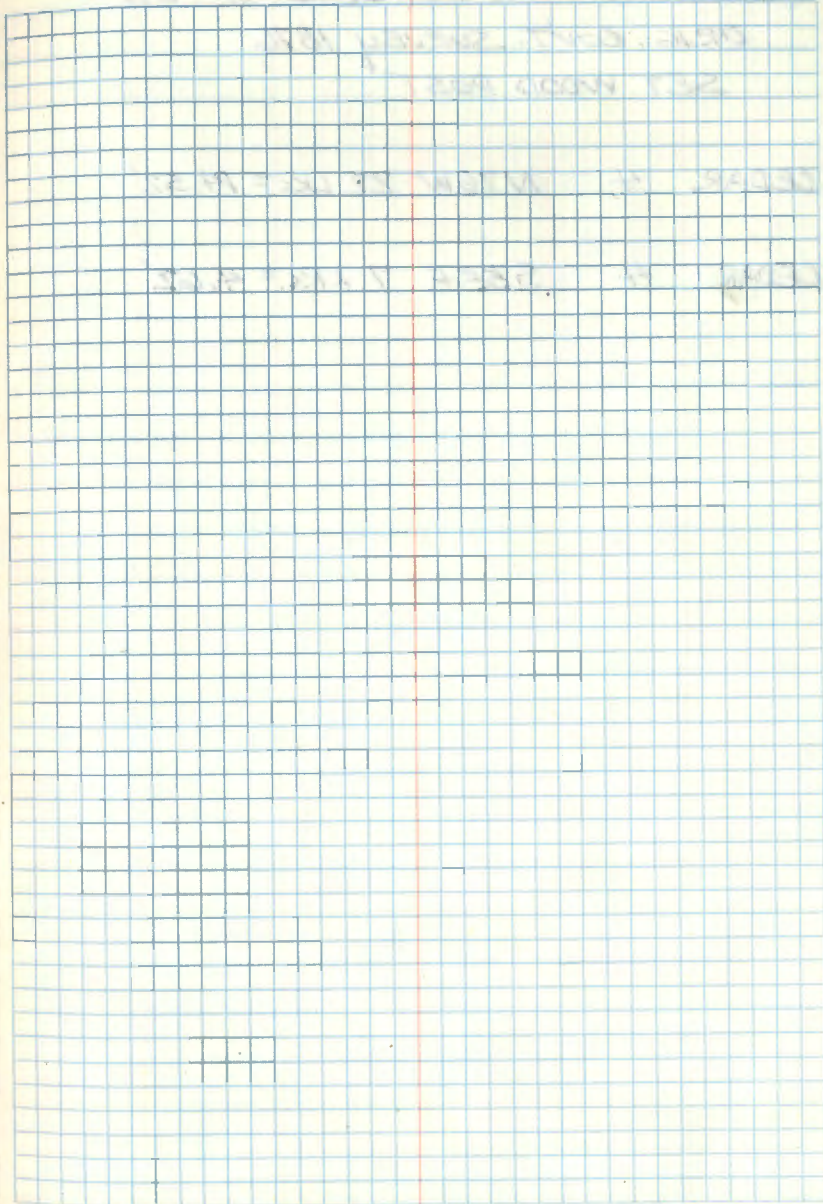
PINE STUB 24 N47W 32 LKS = 21.12'



MEANDER CORNER BET. SEC'S. 22+27
ORIG. GOV'T. SURVEY 1876
SET WOOD POST

CEDAR 6 SB3W 45 LKS. = 29.70'

CEDAR 6 NB6W 46 LKS. = 30.36'



35

QUARTER CORNER BET. SEC'S, 21+22

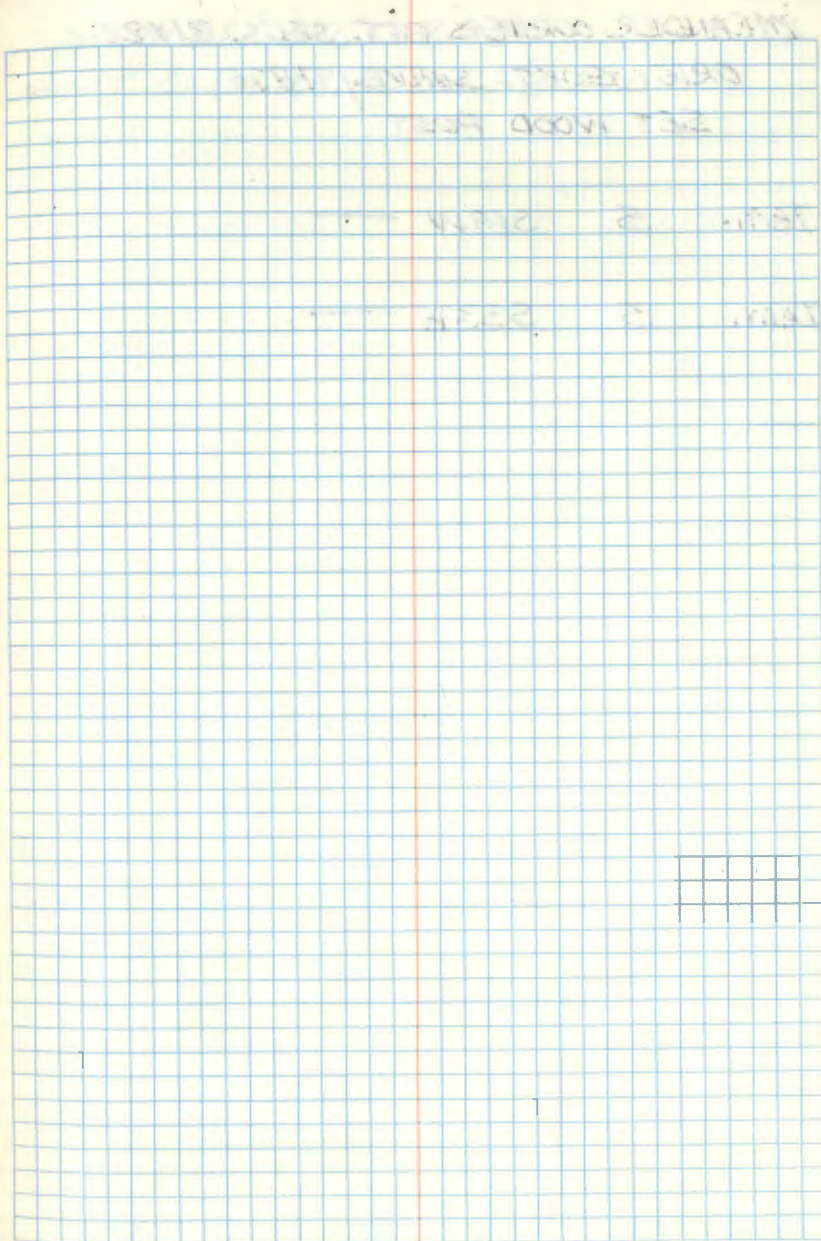
ORIG. GOVT. SURVEY 1876

SET WOOD POST

CEDAR 4 N76W 22 LKS = 14.52'

CEDAR 4 S55E 7 LKS = 4.62'

35



36

MEANDER CORNER BET. SEC'S. 21+22

ORIG. GOV'T. SURVEY 1876

SET WOOD POST

TAM. S 569W —

TAM. S 553W —

36

NORTH BET. SEC'S. 21+22

GOV'T. CHAIN 59.50 CHS. = 3927.0'

37

QUARTER CORNER BET. SEC'S, 32-33

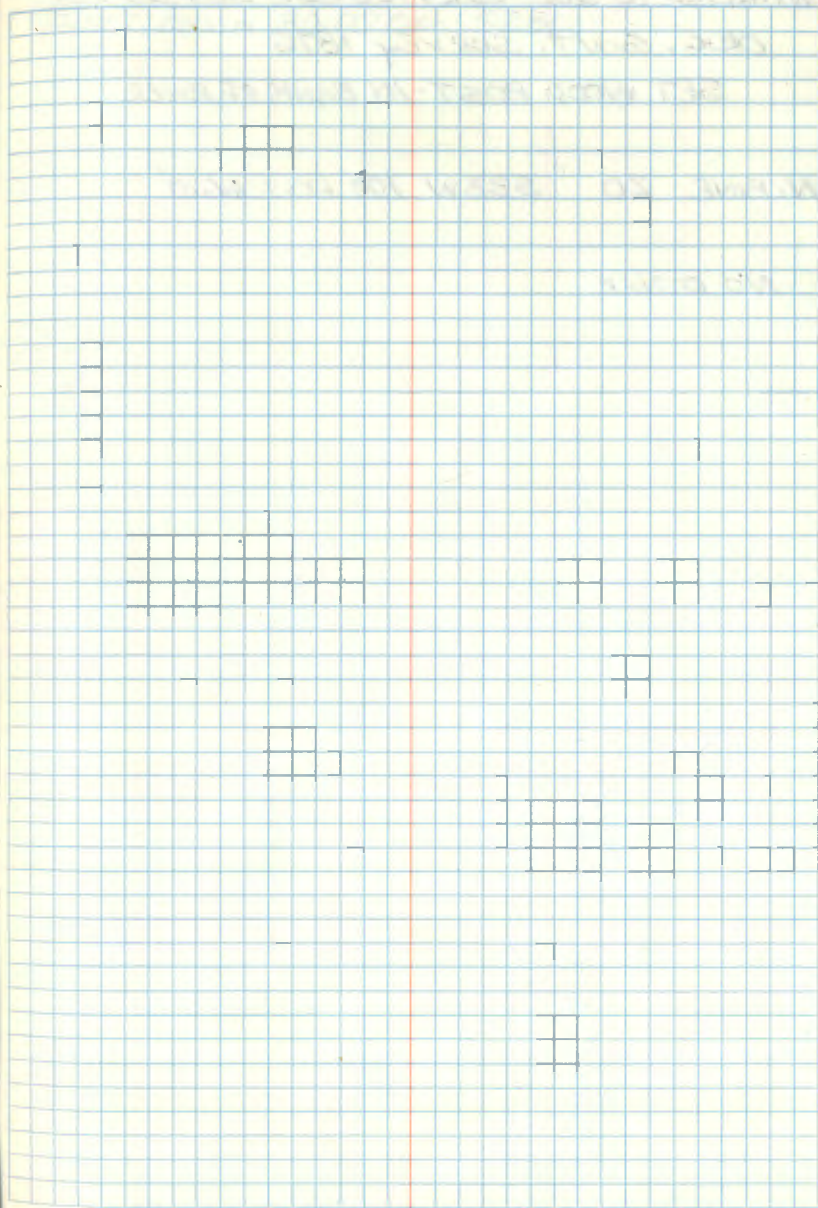
ORIG. GOV'T. SURVEY 1876

SET WOOD POST

N. PINE 20 SBOW 15 LKS = 9.90'

W. PINE 10 SB4E 35 LKS = 23.10'

37



WITNESS TO SEC. COR. 28-29-32+33

ORIG. GOVT. SURVEY 1876

SET WOOD POST-IN BANK OF RIVER

N. PINE 20 S33W 100 LKSE 66.0'

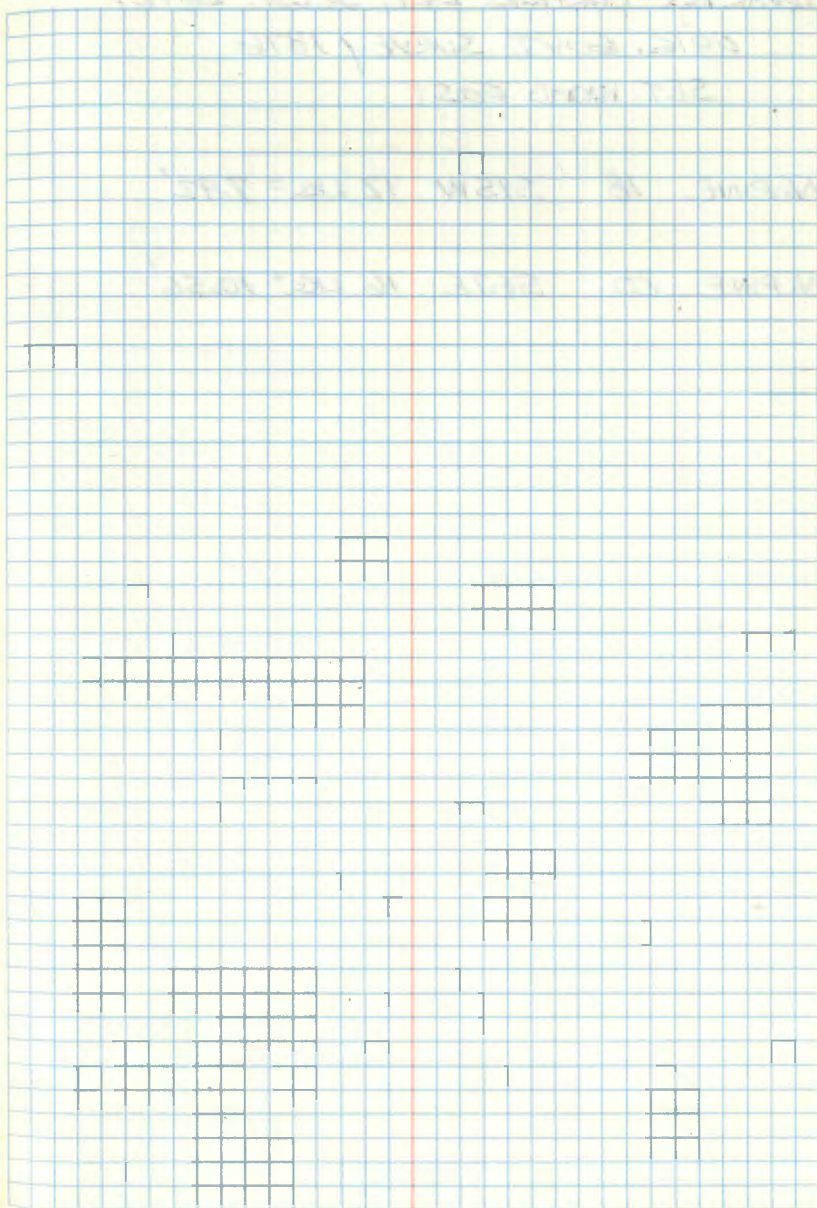
NO OTHER

NORTH BET. SEC'S. 32+33
GOVT. CHAIN 80.00 CHS 5280

QUARTER CORNER BET. SEC'S. 28+33
 ORIG. GOV'T. SURVEY 1876
 SET WOOD POST

N. PINE 12 N38W 27 LKSE 17.82'

N. PINE 20 S35W 50 LKSE 33.0'



40

QUARTER CORNER BET, SECS, 28+29

ORIG. GOVT. SURVEY 1876

SET WOOD POST

N. PINE 18 S1SW 12 LKS = 7.92'

N. PINE 20 S67E 16 LKS = 10.56'

40

CORNER TO SECTIONS 20-21-28+29
 ORIG. GOV'T. SURVEY 1876
 SET WOOD POST

N. PINE 10 S67E 35 LKS = 23.10'

J. PINE 8 S21W 23 LKS = 15.18'

N. PINE 10 N32W 84 LKS = 55.44'

NO OTHER TO NE

Index No. R-9 ITASCA COUNTY LAND CORNER RECORD
 Location 20-21-28-29 T. 19S. R. 26. P.M. 5th
 Description Co. Mon.
 Origin G.L.O. R.S. S.R. SUB. SET

Reference		Corner Perpetuation Record				
1966		Corner Mon.		Found/Date		Set/Date
Date	Mat.	Size	Bearing	Dist.	Remark	
GLO	N. Pine	10"	S67E	23.10'		
1966	N. Pine	9"	S74E	20.30'		
1966	R. Oak	12"	S17E	20.69'		

42

QUARTER CORNER BET. SEC'S. 21+28

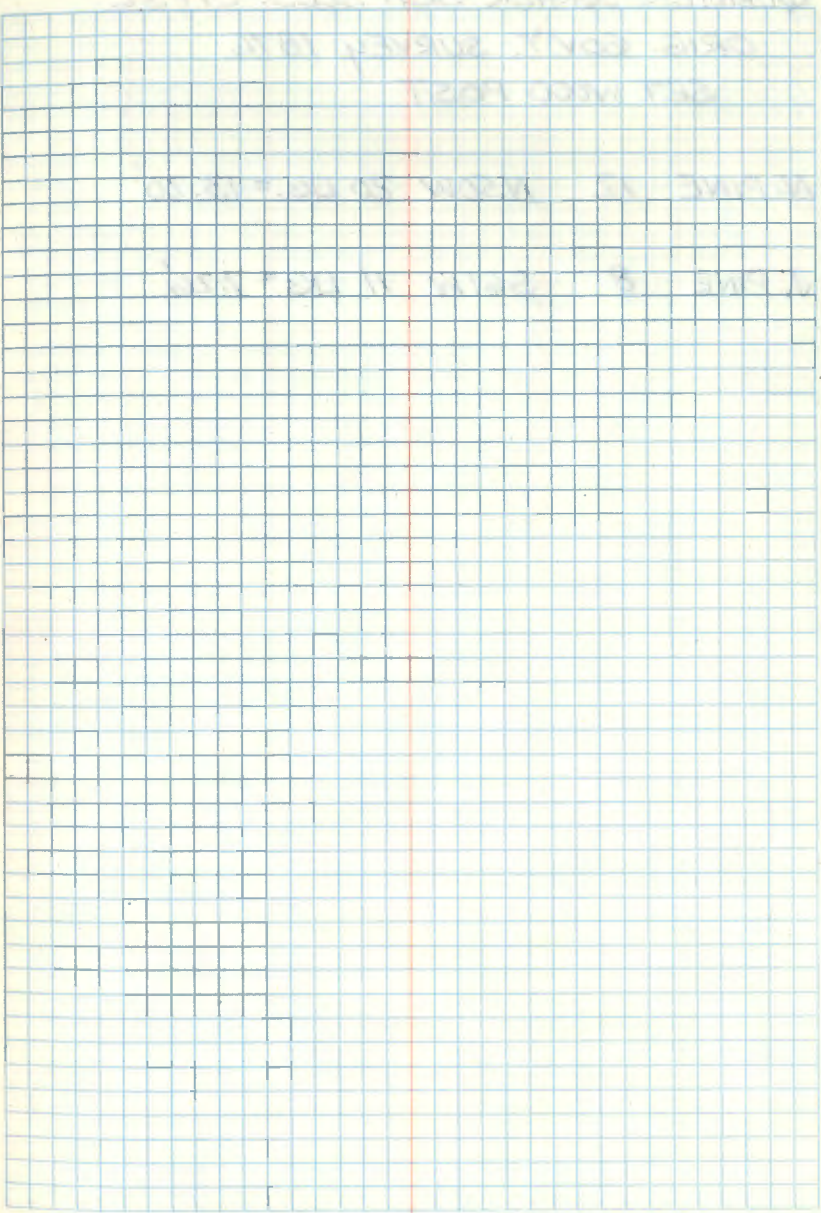
ORIG. GOV'T. SURVEY 1876

SET WOOD POST

J. PINE 5 NZW 45 LKS. = 29.70'

J. PINE 5 SIDE 45 LKS. = 29.70'

42



43

QUARTER CORNER BET. SECS. 29+32

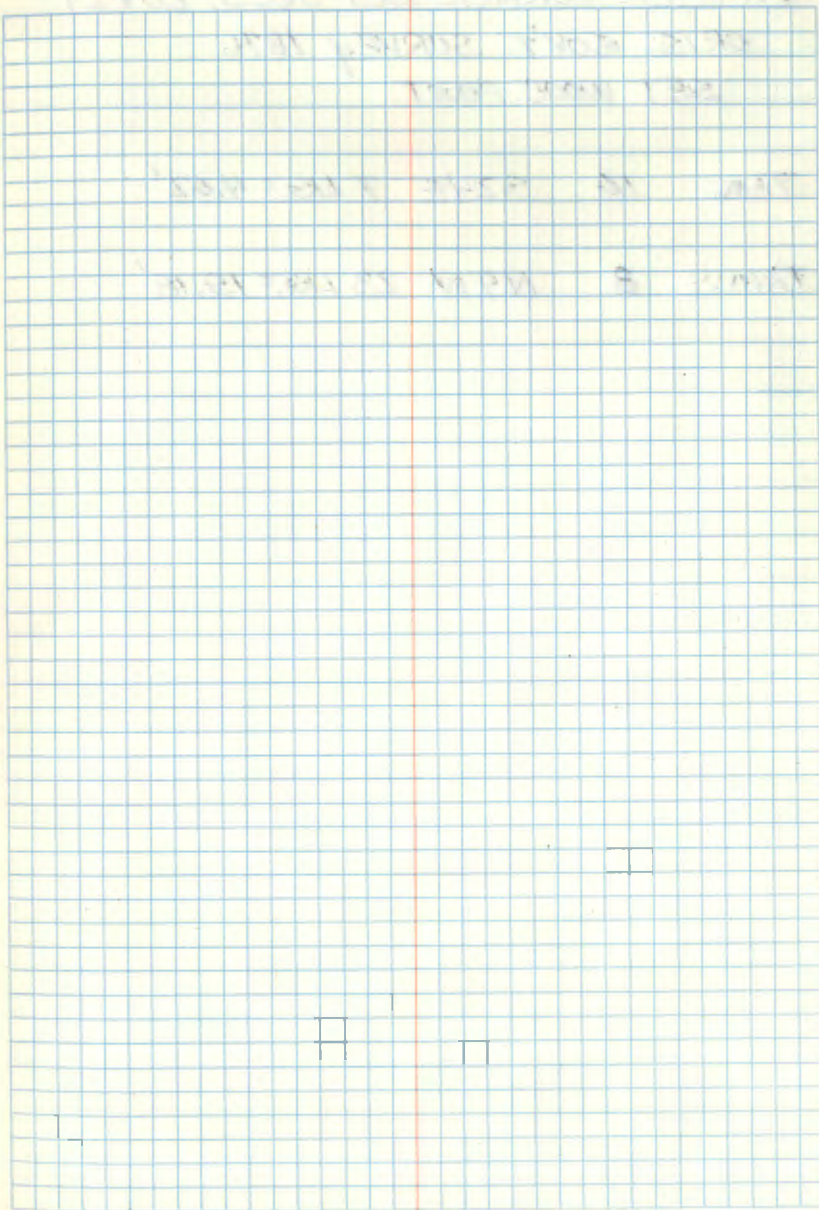
ORIG. GOV'T. SURVEY 1876

SET WOOD POST

N. PINE 12 N50W 20 LKS. = 13.20'

J. PINE 8 S61W 11 LKS. = 7.26'

43



44

QUARTER CORNER BET. SEC'S. 20 & 29
 ORIG. GOV'T. SURVEY 1876
 SET WOOD POST

TAM. 10 S24E 7 LKS. = 4.62'

TAM. 8 N9W 23 LKS. = 15.18'

Index No. R-7		ITASCA COUNTY LAND CORNER RECORD			
Location 20 & 29		T. 145 R. 26 P.M. 5th			
Description Co. Mon.					
Origin	G.I.O. <input checked="" type="checkbox"/>	R.S. <input type="checkbox"/>	S.L. <input type="checkbox"/>		
		SUB. <input type="checkbox"/>	SET <input type="checkbox"/>		
Reference	Corner Perpetuation Record				
9/66	Corner Mon.	Found/Date		Set/Date	
	Date	Wth.	Size	Bearing	
	9/66	Cedar	5"	S90E	5.75'
	9/66	Cedar	6"	S28W	10.00'
				Dist.	Remarks

44

45

QUARTER CORNER BET. SEC'S. 19420
 ORIG. GOV'T. SURVEY 1876
 SET WOOD POST

TAM. 8 S50E 61 LKS. = 40.26'

SPRUCE 6 N80W 31 LKS. = 20.46'

INFORMATION ON ITASCA COUNTY CORNER CARD
 10/66

CEDAR 30 S40E 42.15'

CEDAR 14 S80E 32.72'

45

46

CORNER TO SECTIONS 17-18-19 & 20
 ORIG. GOV'T. SURVEY 1876
 SET WOOD POST

J. PINE 8 S3E 109 LKS = 71.94'

N. PINE 18 S75W 42 LKS = 27.72'

SPRUCE 3 N14W 15 LKS = 9.90'

N. PINE 16 S70E 49 LKS = 32.34'

Reference		Corner Perpetuation Record			
Date	Wit.	Size	Bearing	Dist.	Remarks
10/11/66					
Owner Mon.					
10/66	Tam.	16"	N22W	16.25'	
10/66	Birch	9"	N40E	10.50'	
10/66	Birch	12"	S72W	13.10'	

47

QUARTER CORNER BET. SECS. 17+18
 ORIG. GOV'T. SURVEY 1876
 SET WOOD POST

TAM. 6 N63E 78 LKS = 51.48'

SPRUCE 3 N40W 85 LKS = 56.10'

INFORMATION ON ITASCA COUNTY CORNER CARD
 1967

TAM. 6 S30W 53.30'

SPRUCE 4 N70W 41.80'

47

48

QUARTER CORNER BET. SEC'S. 18+19
 ORIG. GOV'T. SURVEY 1876
 SET WOOD POST

TAM. 8 S44E 51 LKS. = 33.66'

J. PINE 6 S64W 121 LKS. = 79.86'

Reference		Corner Perpetuation Record				
10/76 Ind.		Found/Date				
10/76 Con'd Mon.						
Date	Wit.	Size	Bearing	Dist.	Remarks	
1966	Pop.	13"	S12E	26.09'		
10/76	Pop.	7"	N80E	37.15'		
10/76	Pop.	6"	N55E	33.01'		
10/76	Calc.	5"	S68E	30.39'	Tag	

48

49

QUARTER CORNER BET. SEC'S. 19430
 ORIG. GOV'T. SURVEY 1876
 SET WOOD POST

J. PINE 10 N34E 21 LKS = 13.86'

J. PINE 10 S52E 10 LKS = 6.60'

INFORMATION ON ITASCA COUNTY CORNER CARD

9/66 COUNTY MONUMENT

W. OAK 7 S54W 11.78'

N. PINE 8 N13W 36.65'

49

50 WEST RANGE LINE

QUARTER CORNER BET. SEC'S, 13+18

ORIG. GOV'T. SURVEY 1878

SET WOOD POST

J. PINE 10 S70E 17 LKS. = 11.22'

J. PINE 6 N49W 61 LKS. = 40.26

ITASCA COUNTY CORNER CARD

10/22/76 COUNTY MONUMENT

N. PINE 7 SIDE 10.98' TAG

N. PINE 10 N48W 8.47'

J. PINE 6 N57E 17.05'

50

51 WEST RANGE LINE

CORNER TO SECTIONS 7-12-13+18

ORIG. GOV'T. SURVEY 1873

SET WOOD POST

J. PINE 6 S55E 60 LKS = 39.60'

J. PINE 8 S32W 24 LKS = 15.84'

J. PINE 4 N43 $\frac{1}{2}$ E 27 LKS = 17.82'

J. PINE 8 N62W 39 LKS = 25.74'

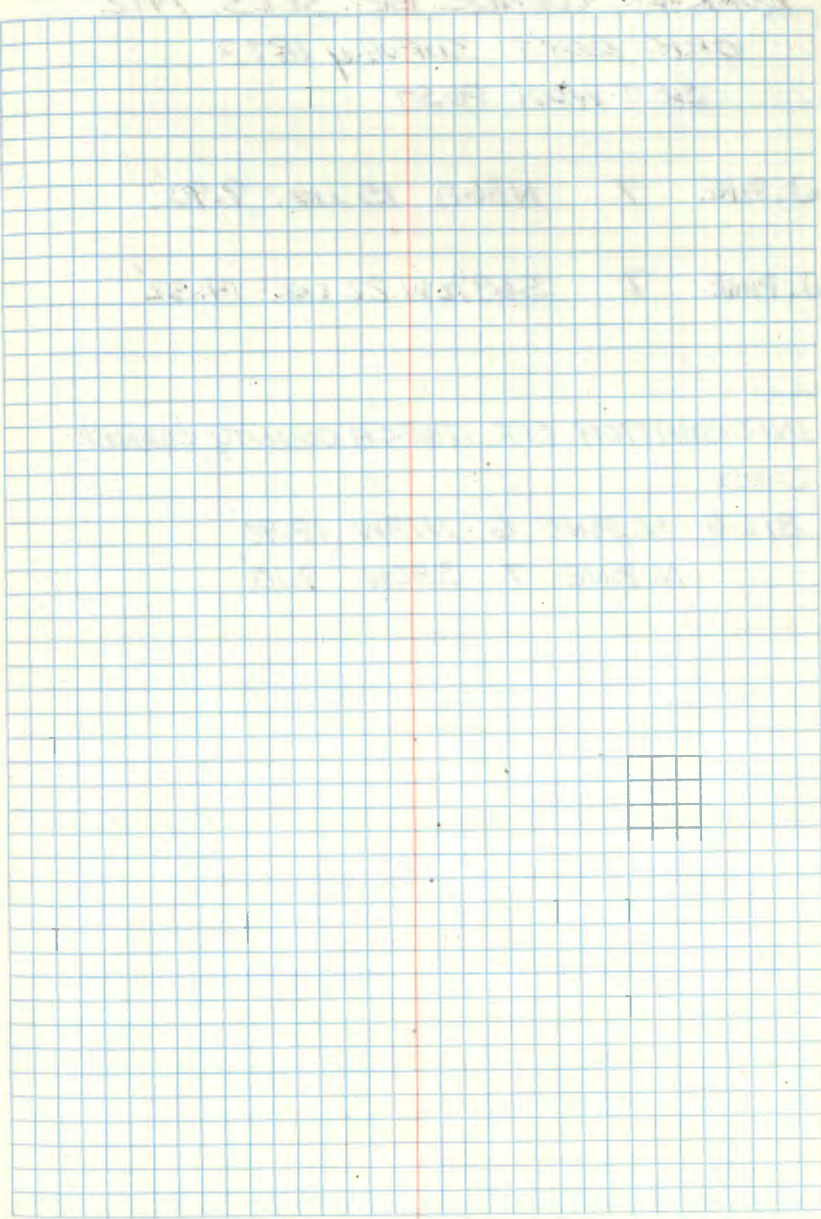
INFORMATION ON ITASCA COUNTY CORNER CARD

8166

N. PINE 8 S77E 29.80'

N. PINE 10 N82W 3.58'

J. PINE 14 S4W 19.11'



52 WEST RANGE LINE

QUARTER CORNER BET. SEC'S. 7+12

ORIG. GOV'T. SURVEY 1873

SET WOOD POST

J. PINE 7 N86E 15 LKS. = 9.90'

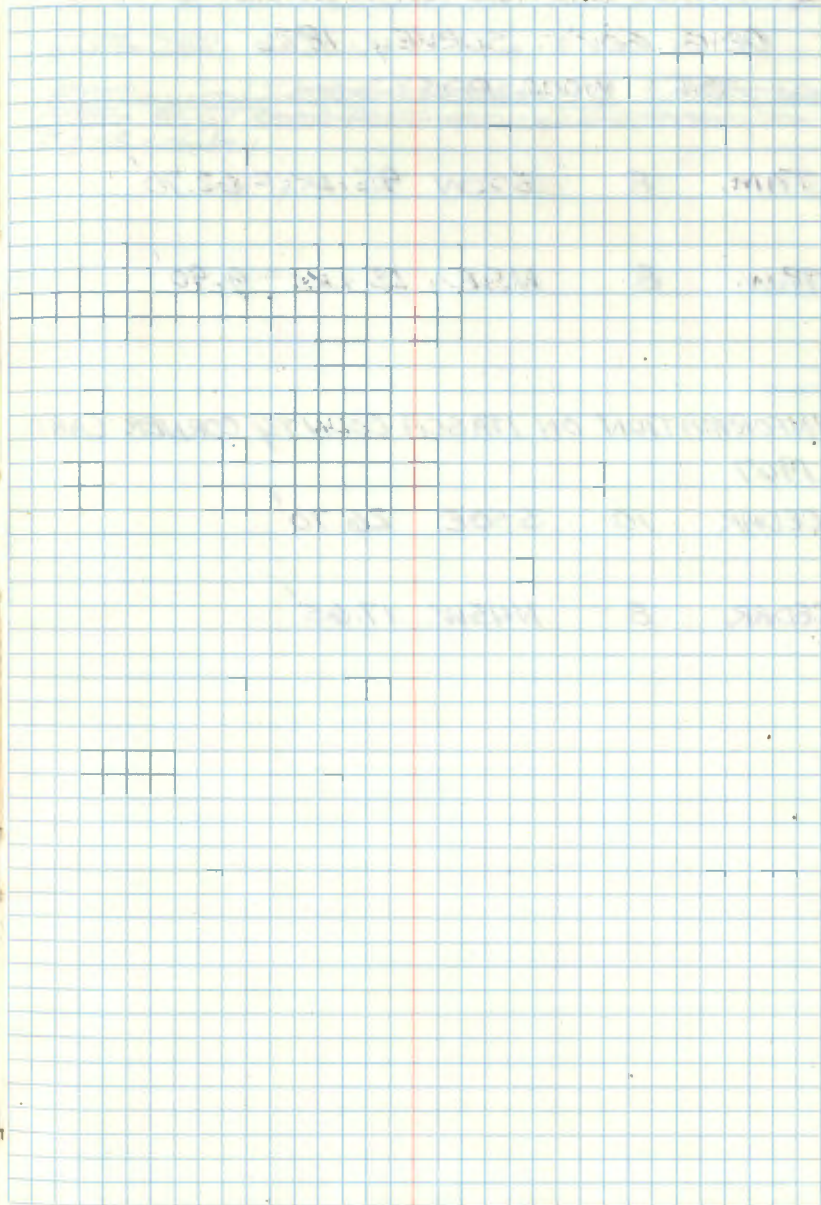
J. PINE 7 S69 $\frac{1}{2}$ W 22 LKS. = 14.52'

INFORMATION OFF ITASCA COUNTY CORNER
CARD

8/66 N. PINE 6 N13W 18.90'

N. PINE 7 S80W 9.10'

52



53

QUARTER CORNER BET. SECS. 6+7
 ORIG. GOV'T. SURVEY 1876
 SET WOOD POST

TAM. 8 S2W 95 LKS = 62.70'

TAM. 8 N5E 15 LKS = 9.90'

INFORMATION ON ITASCA COUNTY CORNER CARD
 1967

CEDAR 10 S50E 26.70'

CEDAR 8 N45W 17.65'

53

~~5077-2070 RAIN~~

~~ITASCA COUNTY CORNER PLACE SID 2 INCHES WITH
 LIGHT DUTY SIGN POST 4 INCHES NORTH.
 FD 3 COUNTY~~

54

QUARTER CORNER BET. SECS. 5+6
 ORIG. GOV'T. SURVEY 1876
 SET WOOD POST

BIRCH 8 N32E 6 LKS. = 3.96'

ELM 10 N75W 22 LKS. = 14.52'

INFORMATION ON ITASCA COUNTY CORNER CARD
 1967

SPRUCE 14 N60W 13.20'

ASPEN 7 N60E 37.95'

54

55

NORTH TOWNSHIP

CERTIFICATE FILED

CORNER TO SECTIONS 4-5-32 & 33

ORIG. GOVT. SURVEY 1876

SET WOOD POST

~~TAM. 6 N80E 29 LKS = 19.14'~~~~TAM. 6 S47E 40 LKS = 26.40'~~~~TAM. 5 S38W 42 LKS = 27.72'~~~~TAM. 5 N37W 29 LKS = 19.14'~~

RESURVEYED BY B. C. BALDWIN 1871

BALSAM 4 S8W 22 LKS = 14.52'

SPRUCE 3 S48E 32 LKS = 21.12'

BALSAM 4 N70E 49 LKS = 32.34'

BIRCH 5 N65W 84 LKS = 55.44'

5-18-2010 R. MAIN

FD IRON IN PLICE AND GAS. BTS ON FACING PAGE
ARE STILL GOOD.

55

Index No. L.S.		ITASCA COUNTY LAND CORNER RECORD					
Location		T. 14S. R. 26. PM. 5th					
Description Brass Capped Monument in concrete		Origin					
		G.L.C. <input type="checkbox"/> R.S. <input type="checkbox"/> S.R. <input type="checkbox"/> SUB. <input type="checkbox"/> EXT. <input type="checkbox"/>					
Reference		Corner Perpetuation Record					
		Corner Mon.	FOUND/DATE	EST/DATE			
		Date	W/L	Size	Bearing	Dist.	Remarks
1876	B.C. Baldwin set a wood post with the following references: Balsam 4" S08W 22lks (14.52') Spruce 3" S48E 32 lks (21.12') Balsam 4" N70E 49 lks (32.34') Birch 5" N65W 84 lks (55.44')						
1926	C. Farley of Mn. National Forest Ranger's office visited corner and recorded the following glo witnesses: Balsam stub South 14' S. Spruce. 4" S42E 20'						
1958	Sam Benzing fd. the remains of two BT's and a scribed post. Set a brass capped monument.	1958	Cedar	6"	S33W	14.20'	to 16d nail
		1958	Cedar	6"	N75W	15.98'	to 8d nail
		1994	Cedar	5"	S70E	22.87'	to 20d nail
		1994	Cedar	12"	S19W	3'	to trees. TAG ONLY
1994	(Sept.) Seamy Engineering Dec. 459957						

56

QUARTER CORNER BET. SEC'S, 4+33

ORIG. GOV'T. SURVEY 1876

SET WOOD POST

~~TAM. 6 S48W 10 LKS. = 6.60'~~~~TAM. 3 N12 $\frac{1}{2}$ W 82 LKS. = 54.12'~~

RESURVEYED BY B. C. BALDWIN 1871

J. PINE 5 N44E 15 LKS. = 9.90'

J. PINE 16 S87E 33 LKS. = 21.78'

CERTIFICATE FILED

56

57 NORTH TOWNSHIP LINE

CORNER TO SECTIONS 3-4-33+34

ORIG. GOV'T. SURVEY 1876

SET WOOD POST

TAM. 4 S22W 55 LKS = 36.30'

TAM. 4 S19E 27 LKS = 17.82'

TAM. 3 N69W 18 LKS = 11.88'

TAM. 6 N37E 40 LKS = 26.40'

RESURVEYED BY B.C. BALDWIN 1871

BALSAM 7 S13W 6 LKS. = 3.96'

BIRCH 8 S48E 5 LKS. = 3.30'

CEDAR 10 N21E 9 LKS. = 5.94'

ASH 4 N30W 9 LKS. = 5.94'

CERTIFICATE FILED

57

58

QUARTER CORNER BET. SEC'S. 3+4
 ORIG. GOV'T. SURVEY 1896
 SET WOOD POST

ASPEN 6 N28E 22 LKS. = 14.52'

J. PINE 5 S44W 83 LKS. = 54.78'

Index No. 213

ITASCA COUNTY LAND CORNER RECORD

Location 213

A. 145 R. 26 P.M. 5th

Description 1/2, 1/2, 3' deep, 8' road. Brought up with 5/8" I.P.

Origin G.L.O. R.S. S.R. SUB. SET

Reference	Corner Perpetuation Record				
	Date	Wth.	Size	Bearing	Dist. Remarks
1876 Wood Post	9/30/78				7/10/83
Aspen, 6", N28-E, 22 lks (14.52')					Set/Date
J. Pine, 5", S44-W, 83 lks (54.78')					
1921 Surveyor's Record Pg. 29	9/75	1/2" Pine	6"	S25E	75.40' *79.91'
Gov't Corner	6/75	1/2" Pine Stp.	8"	S73E	25.36' dead
N. Pine, 8", S79-E, 22.0'	7/89	P. Pole	6"	N86W	54.25' tag
N. Pine, 8", S79-W, 44.3'	7/89	Maple	6"	N86E	58.29'
1966 L.L. Field BK Pg. 8 Found Iron	8/89	N. Pine	7 1/2"	S65-E	*70.22'
N. Pine, N44-E, 61.83'	8/89	N. Pine	12"	S62-W	*115.67'
N. Pine, S67-E, 67.90'	8/89	Burr Oak	9 1/2"	S40-E	*126.02'
1989 Field BK #1 Pg. 11					

*Distances are to 60d spikes

CORNER TO SECTIONS 3-4-9+10
 ORIG. GOV'T. SURVEY 1876
 SET WOOD POST

N. PINE 24 N48E 47 LKS. = 31.02'

N. PINE 24 S3E 26 LKS. = 17.16'

W. PINE 24 S63W 87 LKS. = 57.42'

W. PINE 7 N74W 41 LKS. = 27.06'

Reference		Corner Perpetuation Record			
Origin	G.L.O. <input type="checkbox"/>	R.S. <input type="checkbox"/>	S.R. <input type="checkbox"/>	SUB. <input type="checkbox"/>	SET <input type="checkbox"/>
1876	Wood Post	5/66			
	N. Pine, 24", N48-E, 47 lks (31.02')	Corner Mon.	Found/Date	Set/Date	
	N. Pine, 24", S03-E, 26 lks (17.16')	Date	Wk.	Size	Bearing
	W. Pine, 24", S63-W, 87 lks (57.42')	5/66	J. Pine	8"	N54E
	W. Pine, 7", N74-W, 41 lks (27.06')	5/66	J. Pine	4"	S53E
1966	L.L. Field BK Pg. 11	5/66	J. Pine	8"	S72E
	Found yellow forestry tag & 3 burned stumps that match for Gov't bearing & distance.	8/89	J. Pine	4 1/2"	S69-E
1989	Field BK #1 Pg. 12	8/89	N. Pine	4.3"	S54-E
	*Distances to 600/washers				

60

QUARTER CORNER BET. SECS. 4 & 9
ORIG. GOVT. SURVEY 1876
SET WOOD POST

CEDAR 4 N56E 28 LKS = 18.48'

CEDAR 8 SOUTH 17 LKS = 11.22'

INFORMATION ON ITASCA COUNTY CORNER CARD
7/66

CEDAR ⁵
NOW 6" N85W 15.35'

CEDAR ⁵
NOW 7" N20W 6.36'

5-19-2010. R MAIN

Fd COUNTY IRON IN PLACE UP 2" AND GPS₀
LIGHT DUTY FENCE POST 4" NORTH OF IRON.
COUNTY MARKED ONE NEW BT 9-11-09 BY
GR AND CH. CORNER IN CEDAR ON NORTH
EDGE OF VERY SMALL ASH SWATH.

MEANDER CORNER (EAST SIDE) BET.

SECS. 4+9

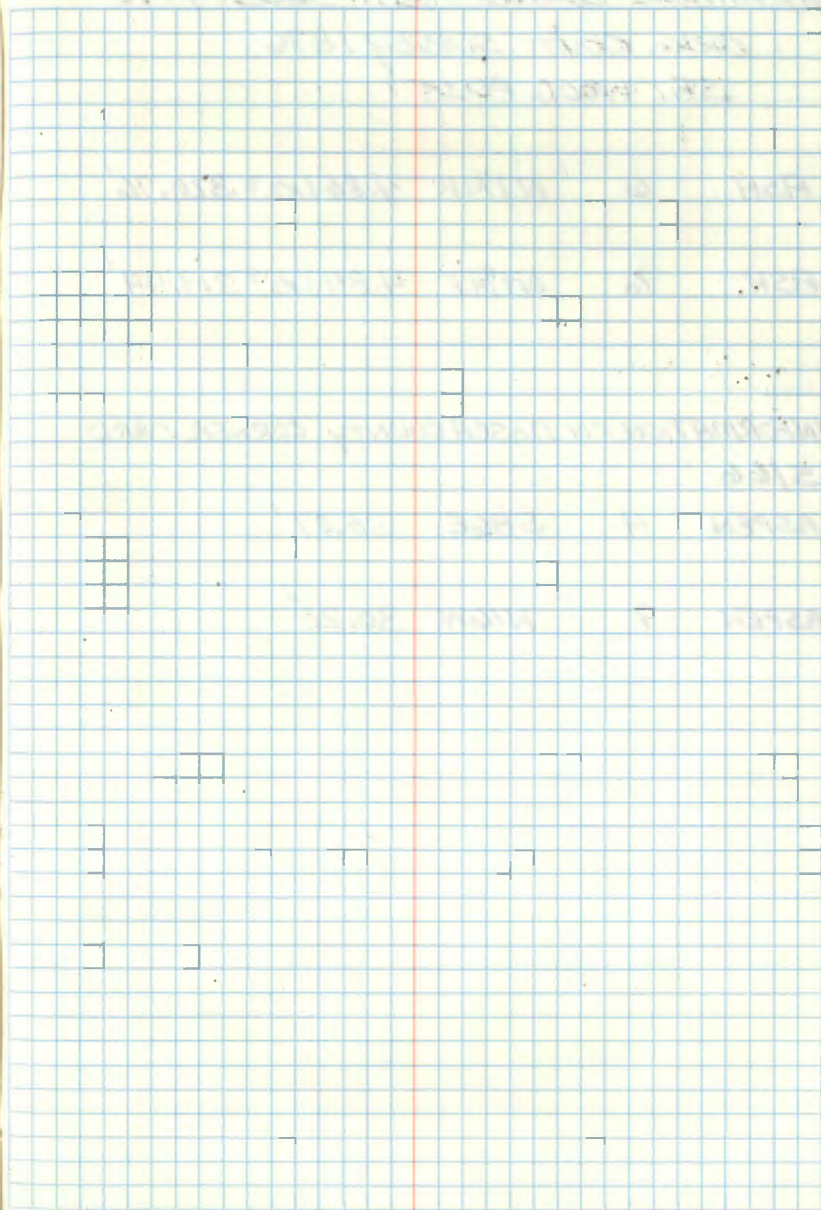
ORIG. GOVT. SURVEY 1876

SET WOOD POST

OAK 9 S83E 12 LKS. = 7.92'

OAK 8 N70E 43 LKS. = 28.38'

ORIG. GOVT. SURVEY 1876



MEANDER CORNER BET. SEC'S. 9+10
 ORIG. GOVT. SURVEY 1876
 SET WOOD POST

ASH 6 N1 $\frac{1}{4}$ W 4.86 LKS. = 320.76'

ASH 6 N1 $\frac{1}{4}$ E 4.84 LKS. = 319.44'

INFORMATION ON ITASCA COUNTY CORNER CARD
 5/66

ASPEN 4 S86E 36.07'

ASPEN 9 N16W 30.20'

QUARTER CORNER BET. SEC'S. 3+10
 ORIG. GOV'T. SURVEY 1876
 SET WOOD POST

ASPEN 5 S.54E 26 LKS. = 17.16'

ASPEN 3 N46W 34 LKS. = 22.44'

INFORMATION ON ITASCA COUNTY CORNER CARD

5/66

W. OAK 8 S.55W 44.50'

BIRCH 7 N52W 16.83'

LINE - E-S 2.50' CORNER ST. 1876

LINE - E-S 2.50' CORNER ST. 1876

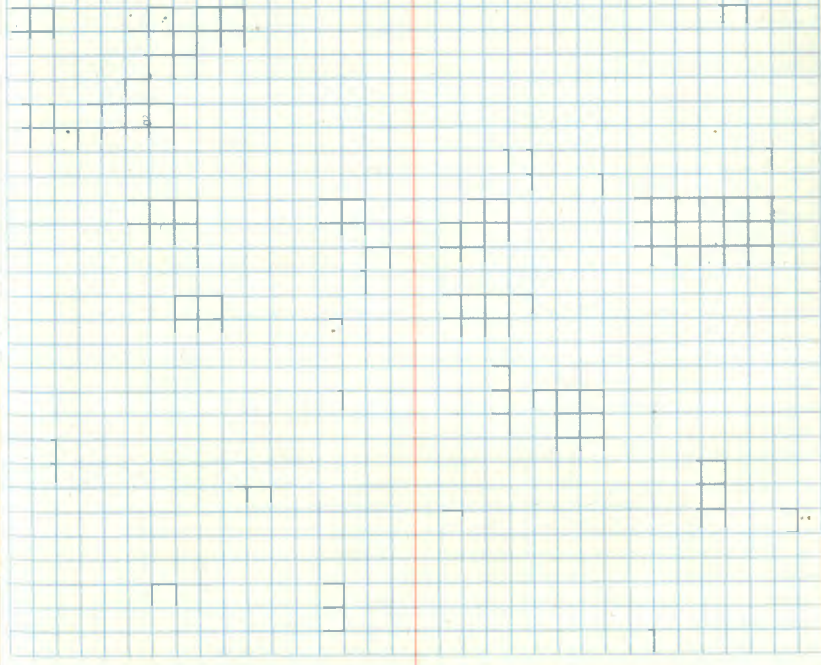
LINE - E-S 2.50' CORNER ST. 1876

LINE - E-S 2.50' CORNER ST. 1876

LINE - E-S 2.50' CORNER ST. 1876

LINE - E-S 2.50' CORNER ST. 1876

LINE - E-S 2.50' CORNER ST. 1876



64

CORNER TO SECTIONS 2-3-10+11
 ORIG. GOV'T. SURVEY 1876
 SET WOOD POST

ASPEN 5 N32E 21 LKS = 13.86'

ELM 18 S89E 72 LKS = 47.52'

ASPEN 6 S65W 60 LKS = 39.60

ASPEN 7 N67W 65 LKS = 42.90'

Origin		G.L.O.	R.S.	S.R.	SUB.	SET
Reference						
Corner Perpetuation Record						
1876	Wood Post	4/13/66-8/14/89	Found/Date	Set/Date		
	Aspen, 5", N32°E, 21 lks (13.86')	Date	Wt.	Bearing	Dist.	Remarks
	Elm, 18", S89°E, 72 lks (47.52')	4/66	Elm	S72E	60.95'	Stump
	Aspen, 6", S65°W, 60 lks (39.60')	4/66	T. Elm	S75W	48.31'	
	Aspen, 7", N67°W, 65 lks (42.90')	4/66	P. Pole	N25E	60.80'	
1913	Old Surveyor's Record Pg. 197	4/66	T. Elm	N53W	59.90'	59.60'
	Gov't Corner	4/66	Co. Mon.	Flush	East	33.00' 33.17'
1922	Sec. 11 Sub. Gov't Corner	8/89	B. of G.	8"	N46°E	*116.62'
	Elm, 10", East, 51.3'	8/89	Ash	8"	S50°W	*47.47'
	" 12", S36°W, 59.0'	8/89	Ash	8"	S79°W	*34.79'
	" 14", S22°E, 70.9'					
	" 18", N70°W, 94.1'					
1921	Surveyor's Record Pg. 29					
	Elm, 8", S82°E, 60.1'					
	Elm, 8", S34°W, 54.9'					
1966	L.L. Field BK Pg. 1					
1989	Field BK #1 Pg. 8					
*Distances are to 60d/washers						

64

QUARTER CORNER BET. SEC'S. 2+3
 ORIG. GOV'T. SURVEY 1876
 SET WOOD POST

BALMIE 12 S85E 16 LKS. = 10.56'

BALMIE 12 N89W 56 LKS. = 36.96'

Index No. 2-12

ITASCA COUNTY LAND CORNER RECORD

Location 4283

T. 145 R. 26 P.M. 52.

Description 3/4" I.P. E. edge road, 22'± S. of culvert.

Origin G.L.O. R.S. S.R. SUB SET

Reference

Corner Perpetuation Record

Reference	1876		8/14/89		Bgt/Date	Remarks	
	Corner Mon.	Found/Date	Date	Wt.			Size
1876 Wood Post	B.of G. 12", S85°E, 16 lks (10.56')						
	B.of G., 12", N89°W, 56 lks (36.96')						
1913 Old Surveyor's Record Pg. 197							
	Gov't Corner, no new Ties.						
1921 Surveyor's Record Pg. 29							
	Gov't corner						
	Elm, 12", N73°W, 47.1'						
	Spruce stp., 20", S69°E, 36.8'						
1966 L.L. Field BK Pg. 10							
	Set back using 1921 Info.						
1989 Field BK #1 Pg. 9							
	*Distances are to 60¢ washers						

66 NORTH TOWNSHIP LINE

CORNER TO SECTIONS 2-3-34+35
ORIG. GOV'T. SURVEY 1876
SET WOOD POST

CEDAR 12 N33E 69 LKS. = 45.54'

CEDAR 10 S37E 84 LKS. = 55.44'

SPRUCE 6 N12W 200 LKS. = 132.0'

CEDAR 6 S89W 290 LKS. = 191.40'

66

CORNER RECORD

T145-146R. 26 P.M. 5th

E. of rd J.

W.A. Russell

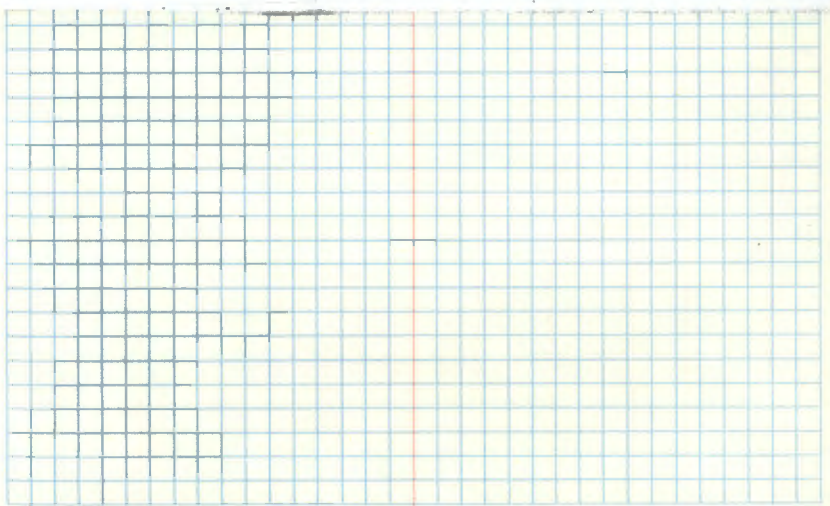
SEC 35-1922

SET

Corner Perpetuation Record

8/14/89

Mon.	Wit.	Found/Date	Bearing	Dist.	Set/Date	Remarks
	Pole		S40°E	81.66'		
	on N. end cul.		S84°E	28.70'		
	Pine		N54°E	45.61'		*45.89'
	on N. end cul.		S05°W	60.68'		
	Pine		S82°E	*95.28'		
	Pine		S80°W	*141.07'		



660 NORTH TOWNSHIP LINE

CORNER TO SECTIONS 2-3-35

ORIG. GOV'T. SURVEY 18

SET WOOD POST

Index No. A-17Location 2-3-34-35Description 2" I.P. 1' below surface, 13' W. of N-S rd & E of rd J.

Origin

G.L.O. R.S. P. 19S.R. SUB. W.A. Russell
SEC 35-1922SET

ITASCA COUNTY LAND CORNER RECORD

T 145-146 R. 26 P.M. 5th

CEDAR 12 N33E 69 LKS

CEDAR 10 S37E 84 LKS

SPRUCE 6 N12W 200 LKS

CEDAR 6 S89W 290 LKS

Reference

old tag on post E. 12 -
Book 23 Pg. 32??1896 Wood Post
J. Pine, 4", N57-W, 17 lks (11.22')
J. Pine, 3", N38-E, 47 lks (31.02')
J. Pine, 3", S28-W, 16 lks (10.56')
-J. Pine, 3", S28-E, 74 lks (48.84')1913 Old Surveyor's Record Pg. 197
Found Gov't Corner No new Ties.
I.M. - Iron Mon. ?

1966 L.L. Field BK Pg. 8 Found Corner

1989 Field BK #1 Pg. 10
*Distances are to 60d/washers

1922 - S-PINE 12" N13°E 455

NORWAY 10" N72W 656

NORWAY 10" S65E 282

GOV'T ANG S37E 488

Corner Perpetuation Record

7/7/81 8/14/89

Corner Mon.

Found/Date

Set/Date

Date

Wit.

Size

Bearing

Dist.

Remarks

~~4/66~~ ~~Fele~~ ~~4082~~ ~~81.66'~~

7/81 X on N.end cul. S84°E 28.70'

7/81 J. Pine 7" N54°E 45.61' *45.89'

7/81 X on N.end cul. S05°W 60.68'

8/89 J. Pine 15 1/2" S82°E *95.28'

8/89 N. Pine 10" S80-W *141.07'

67

QUARTER CORNER BET. SEC'S. 3+34
 ORIG. GOV'T. SURVEY 1876
 SET WOOD POST

~~BALMIE 3 S37E 64 LKS. = 42.24'~~

~~ASPEN 3 N2E 59 LKS. = 38.94'~~

RESURVEYED B.C. BALDWIN 1871

W. PINE 8 S18E 38 LKS. = 25.08'

ASPEN 8 N8E 44 LKS. = 29.04'

67

RECORD

T. 145 R. 26 P.M. 5th

SET

Corner Perpetuation Record

10/22/86

Found/Date	Bearing	Dist.	Remarks
18"	N44E	61.9'	
4"	S67E	68.1'	stp
	South	41.00'	
18"	N24W	73.53'	
6"	S46E	47.96'	

67

QUARTER CORNER BET. SEC'
 ORIG. 60V'T. SURVEY 18'
 SET WOOD POST

~~BALMITE 3 S37E 64 LK~~

~~ASPEN 3 N2E 59 LK~~

RESURVEYED B.C. BALDWIN

W. PINE 8 S18E 38 LK

ASPEN 8 N8E 44 LK

Index No. A-15

Location 3 & 24

Description 1" I.P. 4' N. of E.

Origin G.L.O. R.S. P. 9 S.R. SUB. SET

Reference

old Book 23 Pg. 32 (1916)

12/54 found 6/16 Tam. 14"N4½E
 51.5' and N. Pine st. 20" S04W 68.3'

They put new witnesses on as shown.

They also mention iron in road far. cor.

This info on 3½ x 6½ card in file 14526.

ICDSM - LeTourneau # Box 12/15/54

Apr 1966 ICDSM found iron d 1954 witnesses
 Did not add anything.

ITASCA COUNTY LAND CORNER RECORD

ITASCA COUNTY LAND CORNER RECORD

T. 145 R. 26 P.M. 5th

Corner Perpetuation Record

Corner	Mon.	Found/Date	Set/Date	Remarks
4/66	5/3/85	10/22/86		
Date	Wit.	Size	Bearing	Dist.
12/54	N. Pine	18"	N44E	61.9'
12/54	N. Pine	4"	S67E	68.1' STP
12/54	Co. Mon.		South	41.00'
5/85	N. Pine	18"	N24W	73.53'
5/85	N. Pine	6"	S46E	47.96'

67

68

QUARTER CORNER BET. SEC'S. 2 & 35
 ORIG. GOV'T. SURVEY 1876
 SET WOOD POST

TAM. 4 ~~N56W 20 LKS. = 13.20'~~

TAM. 6 ~~S40W 19 LKS. = 12.54'~~

RESURVEY BY B.C. BALDWIN 1871

TAM. 6 NB5E 99 LKS. = 65.34'

TAM. 6 S89E 109 LKS. = 71.94'

Reference		Corner Perpetuation Record			
Origin	G.L.O. <input type="checkbox"/>	R.S. <input type="checkbox"/>	S.R. <input type="checkbox"/>	SUB. <input type="checkbox"/>	SET <input type="checkbox"/>
1896 B.C. Baldwin resurveyed town line prior to subdividing T145N-R26W. Set new corners and witnessed: TAM 6" NB5E 99 LKS. (65.34') TAM 6" S89E 109 LKS. (71.94')	5/55	Corner Mon.	Found/Date		SET/DATE
		Date	W.M.	Dist.	Remarks
		5/66	Cedar	6" 853%	22.30'
		5/66	Cedar	6" 833%	23.00'
Aug 1872 W.A. Russell, Deputy, 1800m subdivided section 35, T145N-R26W. His notes show: Geo. Tam NB5E 65.3' Geo. Tam NB5E 71.6' Tam 10" NB5E 89.8' Tam 6" S89E 87.6'					
Aug 1966 1000m found corner, set County Monument & witnessed as noted. Loss last trip field notes, T145N-R26W, page 19.					

68

68

CORNER TO SECTIONS 1-2-35-36
 ORIG. GOV'T. SURVEY 1876
 SET WOOD POST

~~CEDAR 6 SSE 38 LKS. = 25.08'~~

~~BALSAM 4 N12E 23 LKS. = 15.18'~~

~~CEDAR 10 N66W 28 LKS. = 18.48'~~

~~CEDAR 12 S25W 12 LKS. = 7.92'~~

RESERVED BY B.C. BALDWIN 1871

TAM. STUB 8 SSE 22 LKS. = 14.52'

TAM. STUB 8 N60E 4 LKS. = 2.64'

TAM. STUB 8 N60W 5 LKS. = 3.30'

TAM. STUB 8 S35W 5 LKS. = 3.30'

69

Index No. A-21		TASCA COUNTY LAND CORNER RECORD					
Location 2-2-35-36		T. 185 R. 26 P.M. 5th					
Description Co. Mon.		SUB. of sec. 8, Russell, 1/2-3-37					
Origin	G.L.O. <input checked="" type="checkbox"/>	R.R. <input type="checkbox"/>	S.R. <input type="checkbox"/>	Corner Perpetuation Record			
Reference		Corner Mon.		Found/Date			
		Date	W.P.	Dist.	W.P./Date	Remarks	
1876 B.C. Baldwin reserved timber prior to subdividing T14871-23640. Set new corners & witnesses:		1/67	Tam.	7"	N70E	20.85'	
Tam stub 8° SSE 22 lks (14.52)		1/67	Tam.	7"	SSE	15.00'	
Tam stub 8° N60E 4 lks (2.64)		1/67	Tam.	7"	N60E	3.90'	
Tam stub 8° N60W 5 lks (3.3)		1/67	Tam.	8"	S25E	8.26'	
Tam stub 8° S35W 5 lks (3.3)							
Aug 1922	W.D. Russell, Deputy 1802nd subdivided section 35, T14871-23640. Notes find 600 Tams & 400' scribbled on corner. Tam 4" N60W 20.60'						
Jan 1947	1802nd found corner, set County Monument & witnesses: same corner last time full notes 185-26, page 27						

QUARTER CORNER, BET. SEC'S. 1 + 36
 ORIG. GOV'T. SURVEY 1876
 SET WOOD POST

~~ASPEN 4 NS9W 40 LKS = 26.40'~~

~~TAM. 4 S26W 47 LKS = 31.02'~~

RESURVEYED BY B.C. BALDWIN 1871

TAM. STUB 6 N88E 11 LKS = 7.26'

TAM. STUB 6 S40E 12 LKS = 7.92'

Index No. 1-23		ITASCA COUNTY LAND CORNER RECORD			
Location 1-1-36		T. 18S. R. 26. P.M. 5th			
Description					
Origin	G.L.O. <input type="checkbox"/>	R.R. <input type="checkbox"/>	S.R. <input type="checkbox"/>	SUB. <input type="checkbox"/>	SET <input type="checkbox"/>
Reference			Corner Perpetuation Record		
1876	GLO				
	Tam Stub.	6" N88E	7.26'	Corner Mon.	Found/Data
	Tam Stub	6" S40E	7.92'	Data	Dist.
1914	County ditch #3.	SR pg 40.		1967 Tam.	8" N40E 60.75'
	Govt corner.			1967 Tam.	10" S55E 67.40'
	Tamarack	4" N53W	58.0'		
	Tamarack	5" S51E	52.9'		

71

QUARTER CORNER BET. SEC'S. 1+2
 ORIG. GOV'T. SURVEY 1876
 SET WOOD POST

TAM. 8 S21E 11 LKS. = 7.26'

TAM. 8 S40W 28 LKS. = 18.48'

INFORMATION ON ITASCA COUNTY CORNER CARD
 1967

CEDAR 9 N65E 14.60'

CEDAR 4 N5E 3.34'

71

QUARTER CORNER BET. SEC'S. 2+11
 ORIG. GOV'T. SURVEY 1876
 SET WOOD POST

SPRUCE 6 N87W 55 LKS = 36.30'

J. PINE 10 S38E 10 LKS = 6.60'

Index No. 1-19		ITASCA COUNTY LAND CORNER RECORD	
Location 122.11		T. 145 R. 26 P.M. 5th	
Description Iron in E of N-S road			
Origin	G.L.O. <input type="checkbox"/>	R.S. <input type="checkbox"/>	S.R. <input type="checkbox"/>
		SUB. <input type="checkbox"/>	SET <input type="checkbox"/>
Reference	Corner Perpetuation Record		
	6/7/66		
Corner Mon.	Found/Date		Set/Date
Date	Wh.	Size	Bearing
6/66	Fence post		West
6/66	Fence post		SW
			Dist.
			14.93'
			70.15'
			Remarks

ITASCA COUNTY SECTION SUBDIVISION
 SECTION 11 K.K. RUSSELL 1922
 SET IRON MONUMENT

J. PINE 7 N46E 93.1'

J. PINE STB 12 S40W 48.0'

CORNER TO SECTIONS 1-2-11+12
 ORIG. GOV'T. SURVEY 1876
 SET WOOD POST

SPRUCE 5 S80E 240 LKS. = 158.40'

J. PINE 10 N69W 40 LKS. = 26.40'

J. PINE 8 S73W 32 LKS. = 21.12'

NO OTHER

ITASCA COUNTY LAND CORNER RECORD						
Reference		Corner Perpetuation Record				
Date	Wit.	Size	Bearing	Dist.	Set/Desc	Remark
1/67	Spruce	18"	S12W	4.60'		
1/67	Spruce	9"	S55E	32.10'		
1/67	Spruce	7"	N50E	54.92'		
1/67	J. Pine	5"	N50W	26.15'		

ITASCA COUNTY SECTION 11 - SUBDIVISION
 By K.K. RUSSELL - 1922

Fd. GOV'T BT's.
 SET IRON MONUMENT

MARKED NEW BT's.

SPRUCE 6 N15E 16.3'

SPRUCE 6 N70E 16.0'

SPRUCE 6 S18W 11.8'

74

QUARTER CORNER BET. SEC'S. 1+12

ORIG. GOVT. SURVEY 1876

SET WOOD POST

NO TREES

INFORMATION ON ITASCA COUNTY CORNER CARD

1967

ELM 10 N45W 35.75'

ASPEN 9 S50W 24.80'

74

75

QUARTER CORNER BET. SEC'S. 11+12
 ORIG. GOVT. SURVEY 1876
 SET WOOD POST

SPRUCE 5 N17E 24 LKS. = 15.84'

SPRUCE 5 N86W 28 LKS. = 18.48'

INFORMATION ON ITASCA COUNTY CORNER CARD

7166 COUNTY MONUMENT

ASPEN 7 S50W 20.75'

ASPEN 7 S30E 15.55'

ITASCA COUNTY SECTION SUBDIVISION

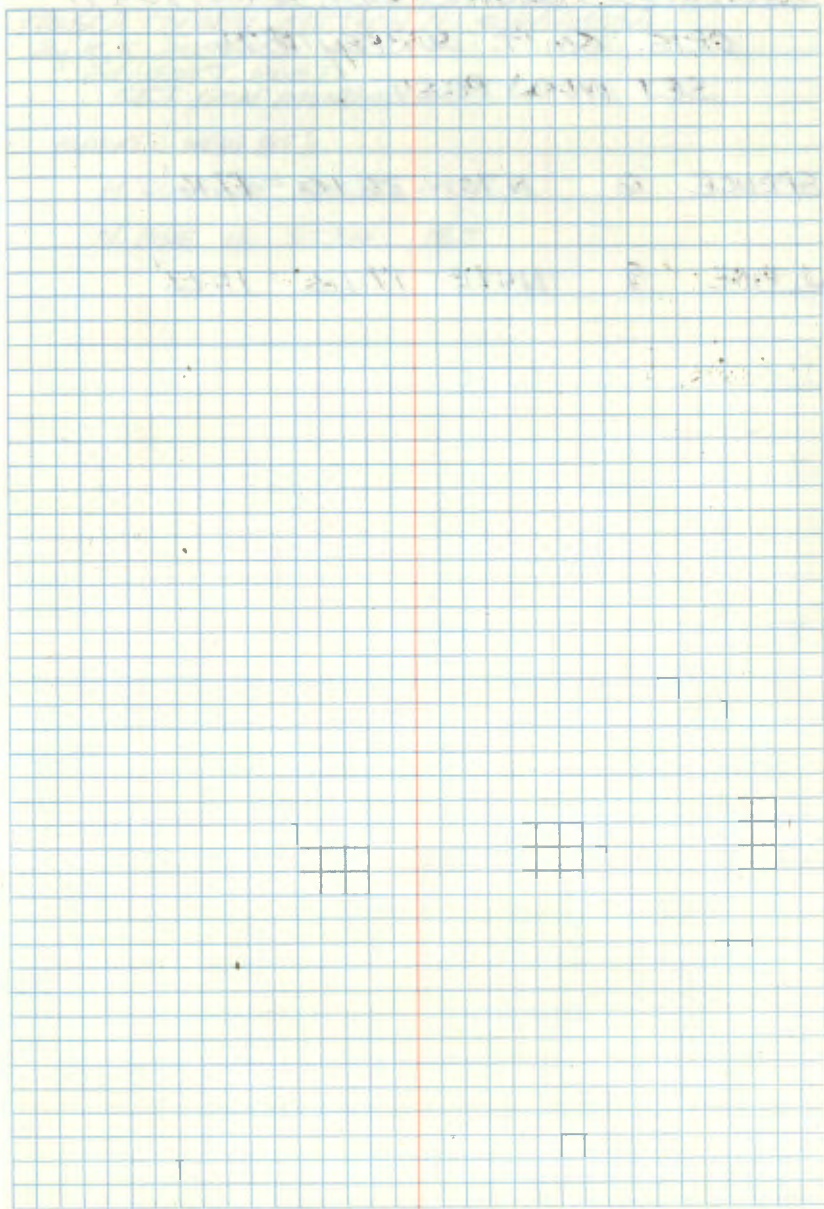
SECTION 11 - K.K. RUSSELL 1922

SET IRON MONUMENT

TAM. 7 S40E 17.2'

TAM. 7 S32W 14.8'

75



76

QUARTER CORNER BET. SECS. 10 + 11
 ORIG. GOV'T. SURVEY 1876
 SET WOOD POST

SPRUCE 6 N70W 26 LKS. = 17.16'

J. PINE 9 N47E 17 LKS. = 11.22'

Reference		Corner Perpetuation Record			
4/11/62					
Corner Mon.		Found/Date		Set/Date	
Date	Wit.	Size	Bearing	Dist.	Remarks
4/66	N. Pine	11"	S55E	15.15'	stamp
	N. Pine	3"	stub S55E	46.80'	9/60
1922	N. Pine	25"	S80°W	*20.08'	Tag
1995	Spruce	8"	S28°E	*22.88'	
1995	N. Pine	11"	N16°E	*13.30'	

1995 (Nov) ICDM Field BK #1 Pg. 15
 *Dist's are to 600/washers

76

ITASCA COUNTY SECTION 11 SUBDIVISION
 By K.K. RUSSELL 1922
 Fd. GOV'T. POST
 SET IRON MONUMENT

MARKED NEW BT'S.

N. PINE 14 S15E 49.9'

N. PINE 16 S77W 19.7'

77

CORNER TO SECTIONS 10-11-14+15
 ORIG. GOV'T. SURVEY 1876
 SET WOOD POST

CEDAR 9 S27E 9 LKS. = 5.94'

BALSAM 8 S84W 12 LKS. = 7.92'

CEDAR 10 N25W 23 LKS. = 15.18'

CEDAR 4 N17E 27 LKS. = 17.82'

77

ITASCA COUNTY SECTION SUBDIVISION
 SECTION 11 K.K. RUSSELL 1922
 SET IRON MONUMENT

CEDAR 10 S36W 47.5'

CEDAR 6 N45W 38.0'

CEDAR STR. 10 S10E 5.9'

Index No. I-17

ITASCA COUNTY LAND CORNER RECORD

Location 10-11-14-15

T. 145 R. 26 PM. 5th

Description Co. Mon.

Origin G.L.O. R.S. S.R. SUB. SET

Reference

Corner Perpetuation Record

Book 33

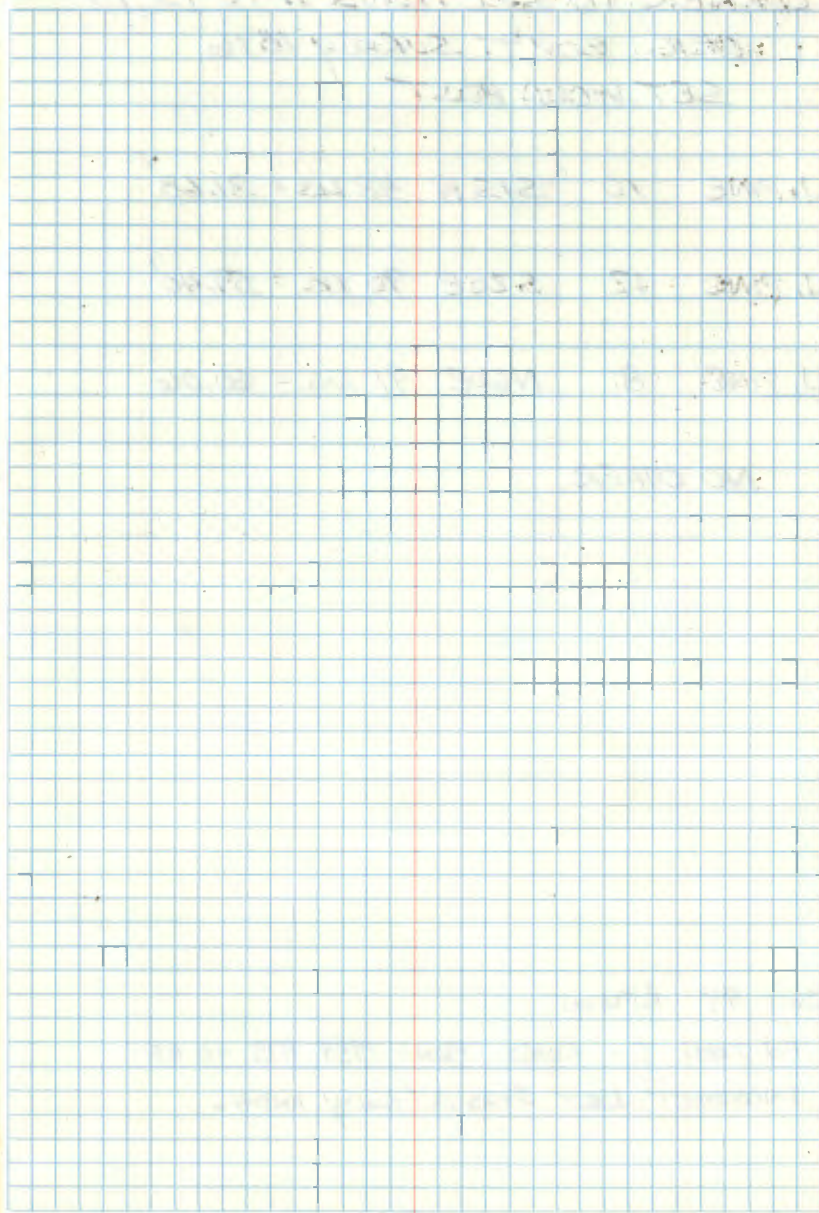
Corner Mon.		Found/Date		Set/Date	
Date	Wit.	Size	Bearing	Dist.	Remarks
4/12/66					
4/66	Cedar	5"	N45E	38.00'	
4/66	Cedar	6"	N62W	44.35'	
4/66	Cedar	6"	S22W	56.80'	
4/66	Cedar	7"	S42E	26.35'	

QUARTER CORNER BET. SEC'S. 11 & 14
 ORIG. GOV'T. SURVEY 1876
 SET WOOD POST

CEDAR 6 S22E 11 LKS. = 7.26'

CEDAR 5 N22W 6 LKS. = 3.96'

Reference		Corner Perpetuation Record				
1876	Book 33 Wood Post	4/13/66	8/1/89			
	Cedar, 6", S22-W, 11 Lks (7.26')					
	Cedar, 5", N22-W, 6 lks (3.96')					
1915	Surveyor's Record Pg. 3	4/66				
	Found both Gov't Cedars					
	Cedar, 14", S27-W, 28.8'	1989	Aspen	10"	N18-W	*68.60'
	Spruce, 13", N08-W, 27.8'	1989	Aspen	7 1/2"	N24-E	*69.13'
1922	Sec. 11 Sub.	1989	B.of G.	6"	S43-W	*47.43'
	Cedar, 14", S31-W, 40.6'					
	Cedar Stp., 16", N22-W, 24.0'					
1966	L.L. Field BK Pg. 3					
	Set corner back lost using old survey info.					



CORNER TO SECTIONS 11-12-13-14
 ORIG. GOV'T SURVEY 1876
 SET WOOD POST

J. PINE 10 S15W 48 LKS = 31.68'

J. PINE 12 S20E 90 LKS = 59.40'

J. PINE 8 N60E 91 LKS = 60.06'

NO OTHER

Index No. J-21...		ITASCA COUNTY LAND CORNER RECORD	
Location 11-12-13-14		T. 14S R. 26 P.M. 5th	
Description 3/4" I.P. in 8" below surface-N. edge of E-W road			
Origin	G.L.O. <input checked="" type="checkbox"/>	R.S. <input type="checkbox"/>	S.R. <input type="checkbox"/>
Reference		SUB. <input type="checkbox"/>	
Corner Perpetuation Record			
Book	Page	Date	Remarks
1876	Wood Post	4/13/66	8/1/89
	J.Pine, 10", S15-W, 48 lks (31.68')		
	J.Pine, 12", S20-E, 11 lks (7.26')		
	J.Pine, 8", N60-E, 91 lks (60.06')		
1915	Surveyor's Record Pg. 3		
	Found Gov't Trees		
	J.Pine, 12", N43-E, 96.9'	1989	J.Pine 10 1/2" S25-E *119.17'
	J.Pine, 10", S53-E, 179.9'	1989	J.Pine 8 1/2" S61-E *117.20'
	Pump, S23-W, 102.0'	1989	W.Pine 6.3" N05-W *93.25'
1920	Surveyor's Record Pg. 26		
1922	Sec. 11 Sub.		
1966	L.L. Field BK Pg. 3 New Witnesses		
1989	Field BK #1 Pg. 2		
*Distances are to 60d/washers			

OCT 99 R MAIN

FD IRON IN ROAD FIND 1989 BTS TO BE
 INCORRECT LET ITASCA COUNTY KNOW.