

1914  
1915  
1916  
1917  
1918  
1919  
1920  
1921  
1922  
1923  
1924  
1925  
1926  
1927  
1928  
1929  
1930  
1931  
1932  
1933  
1934  
1935  
1936  
1937  
1938  
1939  
1940  
1941  
1942  
1943  
1944  
1945  
1946  
1947  
1948  
1949  
1950  
1951  
1952  
1953  
1954  
1955  
1956  
1957  
1958  
1959  
1960  
1961  
1962  
1963  
1964  
1965  
1966  
1967  
1968  
1969  
1970  
1971  
1972  
1973  
1974  
1975  
1976  
1977  
1978  
1979  
1980  
1981  
1982  
1983  
1984  
1985  
1986  
1987  
1988  
1989  
1990  
1991  
1992  
1993  
1994  
1995  
1996  
1997  
1998  
1999  
2000  
2001  
2002  
2003  
2004  
2005  
2006  
2007  
2008  
2009  
2010  
2011  
2012  
2013  
2014  
2015  
2016  
2017  
2018  
2019  
2020  
2021  
2022  
2023  
2024  
2025  
2026  
2027  
2028  
2029  
2030  
2031  
2032  
2033  
2034  
2035  
2036  
2037  
2038  
2039  
2040  
2041  
2042  
2043  
2044  
2045  
2046  
2047  
2048  
2049  
2050

T 144 N

R 27 N

5<sup>30</sup> P.M.

Book 2

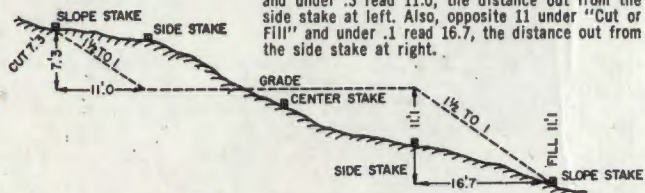
MINING TRANSIT BOOK

82-0028

### DISTANCES FROM SIDE STAKES FOR CROSS-SECTIONING

Roadway of any Width. Side Slopes 1½ to 1.

In the figure below: opposite 7 under "Cut or Fill" and under .3 read 11.0, the distance out from the side stake at left. Also, opposite 11 under "Cut or Fill" and under .1 read 16.7, the distance out from the side stake at right.



Cut or Fill	Distance out from Side or Shoulder Stake										Cut or Fill
	0	.1	.2	.3	.4	.5	.6	.7	.8	.9	
0	0.0	0.2	0.3	0.5	0.6	0.8	0.9	1.1	1.2	1.4	0
1	1.5	1.7	1.8	2.0	2.1	2.3	2.4	2.6	2.7	2.9	1
2	3.0	3.2	3.3	3.5	3.6	3.8	3.9	4.1	4.2	4.4	2
3	4.5	4.7	4.8	5.0	5.1	5.3	5.4	5.6	5.7	5.9	3
4	6.0	6.2	6.3	6.5	6.6	6.8	6.9	7.1	7.2	7.4	4
5	7.5	7.7	7.8	8.0	8.1	8.3	8.4	8.6	8.7	8.9	5
6	9.0	9.2	9.3	9.5	9.6	9.8	9.9	10.1	10.2	10.4	6
7	10.5	10.7	10.8	11.0	11.1	11.3	11.4	11.6	11.7	11.9	7
8	12.0	12.2	12.3	12.5	12.6	12.8	12.9	13.1	13.2	13.4	8
9	13.5	13.7	13.8	14.0	14.1	14.3	14.4	14.6	14.7	14.9	9
10	15.0	15.2	15.3	15.5	15.6	15.8	15.9	16.1	16.2	16.4	10
11	16.5	16.7	16.8	17.0	17.1	17.3	17.4	17.6	17.7	17.9	11
12	18.0	18.2	18.3	18.5	18.6	18.8	18.9	19.1	19.2	19.4	12
13	19.5	19.7	19.8	20.0	20.1	20.3	20.4	20.6	20.7	20.9	13
14	21.0	21.2	21.3	21.5	21.6	21.8	21.9	22.1	22.2	22.4	14
15	22.5	22.7	22.8	23.0	23.1	23.3	23.4	23.6	23.7	23.9	15
16	24.0	24.2	24.3	24.5	24.6	24.8	24.9	25.1	25.2	25.4	16
17	25.5	25.7	25.8	26.0	26.1	26.3	26.4	26.6	26.7	26.9	17
18	27.0	27.2	27.3	27.5	27.6	27.8	27.9	28.1	28.2	28.4	18
19	28.5	28.7	28.8	29.0	29.1	29.3	29.4	29.6	29.7	29.9	19
20	30.0	30.2	30.3	30.5	30.6	30.8	30.9	31.1	31.2	31.4	20
21	31.5	31.7	31.8	32.0	32.1	32.3	32.4	32.6	32.7	32.9	21
22	33.0	33.2	33.3	33.5	33.6	33.8	33.9	34.1	34.2	34.4	22
23	34.5	34.7	34.8	35.0	35.1	35.3	35.4	35.6	35.7	35.9	23
24	36.0	36.2	36.3	36.5	36.6	36.8	36.9	37.1	37.2	37.4	24
25	37.5	37.7	37.8	38.0	38.1	38.3	38.4	38.6	38.7	38.9	25
26	39.0	39.2	39.3	39.5	39.6	39.8	39.9	40.1	40.2	40.4	26
27	40.5	40.7	40.8	41.0	41.1	41.3	41.4	41.6	41.7	41.9	27
28	42.0	42.2	42.3	42.5	42.6	42.8	42.9	43.1	43.2	43.4	28
29	43.5	43.7	43.8	44.0	44.1	44.3	44.4	44.6	44.7	44.9	29
30	45.0	45.2	45.3	45.5	45.6	45.8	45.9	46.1	46.2	46.4	30
31	46.5	46.7	46.8	47.0	47.1	47.3	47.4	47.6	47.7	47.9	31
32	48.0	48.2	48.3	48.5	48.6	48.8	48.9	49.1	49.2	49.4	32
33	49.5	49.7	49.8	50.0	50.1	50.3	50.4	50.6	50.7	50.9	33
34	51.0	51.2	51.3	51.5	51.6	51.8	51.9	52.1	52.2	52.4	34
35	52.5	52.7	52.8	53.0	53.1	53.3	53.4	53.6	53.7	53.9	35
36	54.0	54.2	54.3	54.5	54.6	54.8	54.9	55.1	55.2	55.4	36
37	55.5	55.7	55.8	56.0	56.1	56.3	56.4	56.6	56.7	56.9	37
38	57.0	57.2	57.3	57.5	57.6	57.8	57.9	58.1	58.2	58.4	38
39	58.5	58.7	58.8	59.0	59.1	59.3	59.4	59.6	59.7	59.9	39
40	60.0	60.2	60.3	60.5	60.6	60.8	60.9	61.1	61.2	61.4	40

DISTRICT RANGER  
 U. S. Forest Service  
 P. O. Box 308  
 Deer River, MN 56636

218-246-2123 PHONE



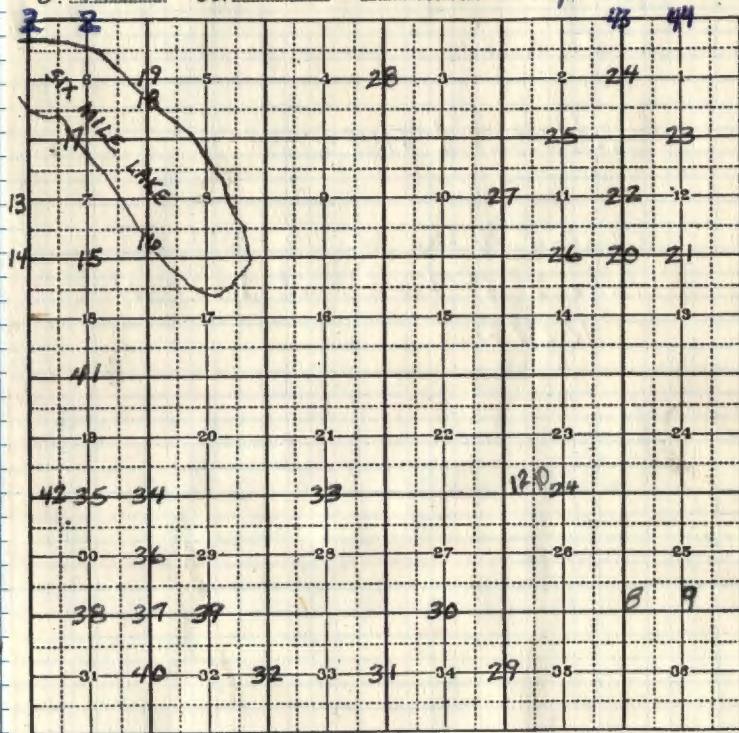
The paper in this book is made of 100% high grade rag stock with a WATER RESISTING surface sizing.

KEUFFEL & ESSER CO.

# USFS, CASS COUNTY, MN ①

## INDEX

T. 144N R. 27W S. = Principal Mer.



A-1 & A-3

Sec Cor 6 & 1 T144N R27W  
an R28W See page 3 of

Field Book <sup>3</sup> T145N-R27W

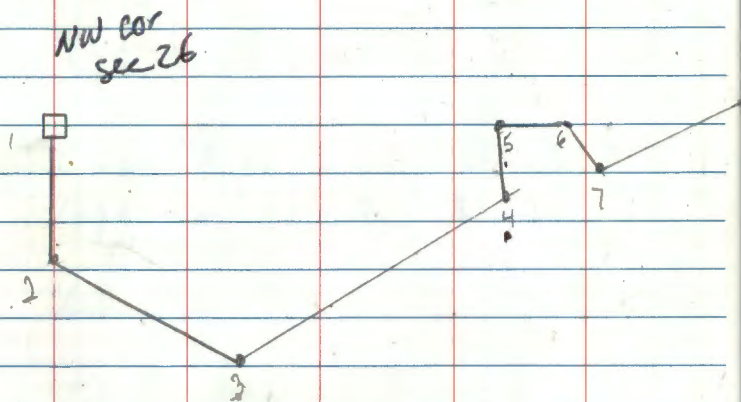
Closing  $\frac{1}{4}$  Cor Sec 6 - See  
Page 8 of Field Book ~~3~~ T145N  
R27W

Angles for property line Sec 26 Pg 11

Traverse between N  $\frac{1}{4}$  S26 to  
NW Cor S26 Pg 3-7

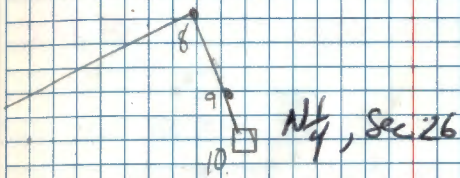
③

# Traverse



③

# Diagram



85  
 1103  
 Dist 3-4 90-1  
 Dist 4-3 89.52  
 5

④

T144N R27W

Traverse between N 1/4 and NW corner  
of sec 26 for setting N 1/16 23-26STA 1<sup>st</sup> H&D 2<sup>nd</sup> H&R 3<sup>rd</sup> H&D 4<sup>th</sup> H&R

H&amp;R

Dist 1-2 88-37-09 271-22-45 ~~271-22-48~~ 335.04 334.94Dist 2-1 91-29-23 268-30-30 ~~268-30-34~~ 335.09 334.98FS 3 121-52-09 301-52-07 121-51-~~49~~<sup>55</sup> 301-51-58BS 1 00-00-~~19~~ 180-00-16 00-00-~~12~~<sup>43</sup> 180-00-08TI 2 121-51-50 121-51-51 121-51-~~49~~<sup>43</sup> 121-51-50

121-51-49

Dist 2-3 90-03-24 269-56-42 ~~269-56-38~~ 616.92 616.92Dist 3-2 90-~~02-29~~<sup>00-20</sup> 269-59-50 ~~269-59-45~~ 616.89 616.89FS 4 113-29-14 293-29-13 113-29-16 293-29-~~10~~<sup>12</sup>BS 2 00-00-18 180-00-15 00-00-23 180-00-~~24~~<sup>48</sup>TI 3 113-28-56 113-28-58 113-28-53 113-28-~~46~~<sup>48</sup>

113-28-54

Dist 3-4 90-10-50 269-49-18 ~~269-49-14~~ 829.31 829.31Dist 4-3 89-52-15 270-07-54 ~~270-07-50~~ 829.33 829.33

JAR 8/16/85

④

August 7, 1985

Clear, hot, humid, breeze

T-2 S/N 265189

PC BY G. Kosvicko

Red IA S/N 4863

TT BY G. Robertson

ECP = +.1

B. AUSEK

T144N R27W

522 523

521 526

1937

STA 1 =

Concrete man w/BC (GLO)

STA 2 = 60d spike  
west side of old road

STA 3 = 60d spike

334.96

616.90

829.31

⑤

7144N R.27W

Traverse cont'd from pg 4

STA 1<sup>st</sup> H&D 2<sup>nd</sup> H&R 3<sup>rd</sup> H&D 4<sup>th</sup> H&R

H&amp;R

FS 5 131-33-37 311-<sup>37-11</sup>~~33-29~~ 131-33-46 311-33-40

BS 3 00-00-21 179-59-01 00-00-28 180-00-28

IT@ 4 131-33-16 131-33-10 131-33-18 131-33-12

131-33-14

Dist 4-5 90-19-30 269-40-47 ~~269-40-39~~ 251.12 251.12Dist 5-4 89-48-51 270-10-54 ~~270-11-02~~ 251.11 251.11

FS 6 260-36-21 80-36-18 260-36-19 80-36-18

BS 4 00-00-21 180-00-14 00-00-15 180-00-17

IT@ 5 260-36-00 260-36-04 260-36-04 260-36-01

260-36-02

Dist 5-6 90-58-15 269-01-42 ~~269-01-44~~ 189.87 189.84Dist 6-5 89-13-33 270-46-16 ~~270-46-22~~ 189.84 189.82

✓ JBR 8/8/85

⑤

August 7, 1985

STA 4 = good spike.

August 8, 1985

Cloudy, breeze, hot

Some cumulus as previous day

EOT = +1

251.11

2" Aspen

35.43

18.70

3" Aspen

189.83

STA 5 = good spike

⑥

T144N R27W

Traverse cont'd from pg 5

STA 1<sup>st</sup> H&D 2<sup>nd</sup> H&D 3<sup>rd</sup> H&D 4<sup>th</sup> H&R

H&amp;R

FS 7 233-03-38 53-03-42 233-03-48 53-03-42

BS 5 00-00-20 180-00-16 00-00-20 180-00-21

T@ 6 233-03-18 233-03-26 233-03-28 233-03-21

233-03-23

Dist 6-7 90-28-04 269-31-53 269-31-55 181.51 180.50

Dist 7-6 89-04-04 270-15-52 270-15-54 181.53 181.53

FS 8 98-25-10 278-25-09 98-25-05 278-25-05

BS 6 00-00-17 180-00-17 00-00-16 180-00-10

T@ 7 98-24-53 98-24-52 98-24-59 98-24-55

98-24-55

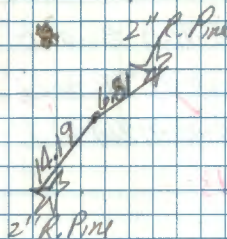
Dist 7-8 90-13-50 269-45-44 269-46-00 986.17 986.16

Dist 8-7 89-48-36 270-11-09 270-11-17 986.18 986.17

✓ 233-03-23

August 8, 1985

⑥



STA 6 = 60d spike

181.52

STA 7 = 60d spike  
east leg of FR 2339

986.17



①

T144N R27W

Traverse cont'd from pg 6

STA 1<sup>st</sup> H&D 2<sup>nd</sup> H&R 3<sup>rd</sup> H&D 4<sup>th</sup> H&R

H X

FS 9 264-49-12 84-49-10 264-49-10 84-49-10

BS 7 00-00-24 180-00-21 00-00-21 180-00-24

TI@ 8 264-48-48 264-48-49 264-48-49 264-48-48

264-48-48

Dist 8-9 89-59-12 270-00-21 270-00-37 336.08 336.08

Dist 9-8 90-07-20 269-52-25 269-52-33 336.06 336.06

FS 10 181-37-21 01-37-~~23~~<sup>17</sup> 181-37-17 01-37-20BS 8 00-00-20 180-00-~~18~~<sup>17</sup> 00-00-18 180-00-20TI@ 9 181-37-01 181-37-~~01~~<sup>00</sup> 181-36-59 181-37-00

181-37-00

Dist 9-10 97-25-58 262-33-45 262-33-54 53.67 53.22

Dist 10-9 83-14-18 276-45-34 276-45-38 53.61 53.24

✓ MAR 8/18/85

②

August 8, 1985

STA 8 = 60d spike  
E of ER 2339

336.07

STA 9 = 60d spike

Brg 10-9

N 35° W

53.23

STA 10

1/4	523
	526
	1937

IPN/BC

(GLO)

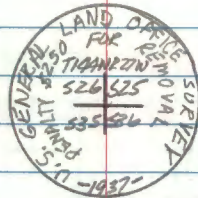
⑧

T144N R27W  
NW corner of sec 36

August 19, 1985 Recovery by G. Kasenka  
B. Ausk

Found a 6 inch diameter concrete monument with a 3½ inch diameter brass cap stamped as shown, up 6 inches above swamp

Decl = 5° East



From which:

1937 J. Pine stump, N86°E, 32.20 ft to 6od spike in center of rotted stump. (badly rotted)

1937 Tamarack stub, S04°E, 96.00 ft to a 6od spike in stump, stub fallen over, scribbing rotted out

1937 J. Pine, 8.7 in, S66°W, 32.70 ft to a 16d nail in NW face, <sup>single</sup> blaze, sur: "535 BT" visible w/6od spike

1966 J. Pine, 9.8 in, N86°E, 79.69 ft to 16d nail in NW face, double blaze, "525 BT" w/6od spike

1966 Spruce, 12.0 in, S68°E, 140.05 ft to 16d nail in SW face, double blaze partly overgrown "536 BT" w/6od spike

1966 Spruce, 7.5 in, S63°W, 71.69 ft to a 16d nail in NW face, double blaze, sur: "535 BT" w/6od spike

⑧

1966 Spruce, 6.5 in, N58°W, 55.14 ft to 16d nail in NE face, double blaze, partly overgrown "BT" visible w/6od spike  
Metal fence post, east, 6.2 ft w/54-4, 54-9

All trees are painted red and tagged BT  
We found no evidence of the original gov't survey or any other survey

See: BK 1 pg 47

9

T144N R27W N 1/4 S 36

Cedar 11.4 in N33°E 71.71 ft to a 6d nail in SE  
face, single blaze partly overgrown "1/4 S25B" w/60d spike

W. Birch 6.9 in S28°W 18.06 ft to 16d nail in NW  
face, single blaze partly overgrown scr unrecognizable w/60d spike

Balsam 7.8 in N<sup>74°</sup><sub>66</sub>W 13.69 ft to 6d nail in SW  
face, double blaze, scr mostly overgrown w/60d spike

Metal fence post, south, 2.2 ft w/54-4, 54-9

Metal fence post, west, 2.3 ft w/54-2

9

See BK 1 pg 48

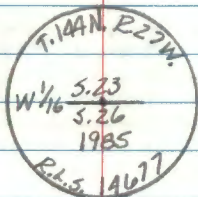
(10)

T.144N R27W W<sup>1</sup>/<sub>16</sub> Sec. 26 #23Angle to set corner and monumentation  
into.STA 1<sup>st</sup>H&D 2<sup>nd</sup>H&RFS 501 02-00-~~27~~<sup>11</sup> ~~182-00-12~~<sup>182-00-12</sup> Dist = 71.26 ftBS 6 00-00-~~20~~<sup>07</sup> 180-00-02

TP 5 02-00-04 02-00-10

02-00-07

71.26



Decl = 5° East

Set a 5 foot long by 2 1/2 inch outside diameter galvanized iron pipe with a magnetized break-off bottom, with a 3 inch diameter domed brass cap stamped as shown, up 18 inches from which:

I. Pipe 12.1 in, N74°E 146.41 ft to all nail in

R. Pipe 8.4 in, S19°W 138.68 ft to all nail in

Metal fence post, north, 3.0 ft w/54-2

Metal fence post, east, 3.0 ft w/54-2, 54-9

No other BT's available

Card BA

(10)

August 15, 1985

Clear, cool

T-2 S/W 265184 PC #11 G. Kosenko

Aid B. Husk

This corner was set @ proportionate distance between the NW Sec cor and north 1/4 cor of sec 26.

All trees are painted red and tagged BT

Alan P. Kosenko  
8/15/85

N face, double blaze, ser: "W1/16 523 BT" w/60d spike

W face, double blaze, ser: "W1/16 526 BT" w/60d spike

T144 N R27 W

Angles to turn to cut property line between

W 1/4 N &amp; NW Sec. cor. sec. 26

STA 1<sup>st</sup> HAD 2<sup>nd</sup> HAR

FS 9

BS 1

PI@10 301-56-01

FS 10 177-50-03 357-49-40

BS 5 00-00-00 177-59-40

PI@501 177-50-03 177-50-00

August 19, 1985

Cloudy, drizzle

PC PD T

12 R-17

T144N R27W

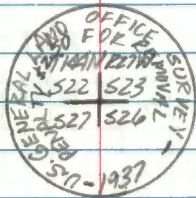
NW Sec Cor of S.26

August 13, 1985

Recovery by: G. Kosenko G. Robertson

Found a 6 inch outside diameter  
concrete monument with a 3 1/2  
inch diameter brass cap stamped  
as shown and up 6 inches

Decl: 5° East



From which:

Burr Oak, 6.3 in, N88°E, 30.11 ft to a 1/2" nail  
in N. face, double blaze overgrown, w/60d spike

Burr Oak, 18.4 in, S63°E, 58.62 ft to a 1/2" nail  
in N. face, double blaze overgrown, w/60d spike

Elm, 17.3 in, S20°E, 70.90 ft to a 1/2" nail  
in W. face, double blaze overgrown, w/60d spike

Burr Oak, 24.6 in, S56°W, 62.31 ft to a 1/2" nail  
in N. face, double blaze overgrown, w/60d spike

Ash, 18.7 in, N30°W, 117.15 ft to a 1/2" nail  
in NE face, double blaze overgrown, w/60d spike

Metal fence post, South, 5.0 ft w/54-2+54-4

Metal fence post, West, 4.2 ft w/54-2, 54-4

See BK 1 page 20

13

WEST  $\frac{1}{4}$  CORNER BET. SEC'S. 7 + 12

PROPORTIONAL DISTANCE

NOTES OF GLO RESURVEY 1937

SET 1" X 36" IRON POST WITH BRASS CAP MARKED

$$\frac{1}{4}$$

S12	S7
-----	----

1937

WITNESSED BY

N. PINE 10 N  $14\frac{3}{4}$ ° E 217 LKS. = 143.22'

NO OTHER AVAILABLE IN SEC. 12

13

N  $0^{\circ} 11'$  E FROM SW COR. SEC 7 - 39.84 CHS  
OR 2629.44'

CORNER TO SECTIONS 7-12-13+18

PROPORTIONAL DISTANCE

NOTES OF GLO RESURVEY 1937

SET 6" DIA. X 24" LONG CONCRETE MONUMENT  
WITH BRASS CAP MARKED

T144N

R2BW R27W

S12	S7
-----	----

S13	S18
-----	-----

1937

WITNESSED BY

POPLAR 9  $S30^{\circ}40'E$  453 LKS. = 298.98'

NO OTHERS AVAILABLE



15

J-3

QUARTER CORNER BET. SECS. 7 &amp; 18

NOTES OF GLO RESURVEY 1937

SET 1" X 3/16" IRON POST WITH BRASS CAP MARKED

PROPORTIONAL DISTANCE

$$\frac{1}{4} \frac{57}{518}$$

1937

WITNESSED BY

W. PINE 8 S 52 1/2 W 61 LKS. = 40.26'

N. PINE 15 N 9 3/4 W 254 LKS. = 167.64'

15

$$S 85^{\circ} 04' W - 34.98 \text{ CHS.} = 2308.68' \text{ FROM EAST S.C.}$$

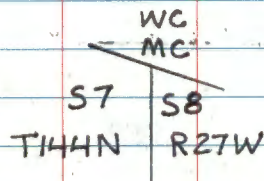
$$- 35.12 \text{ CHS.} = 2317.92' \text{ TO WEST S.C.}$$

MEANDER CORNER BET. SEC'S. 7+8

NOTES OF GLO RESURVEY 1937

AT TOP OF BANK ON SW SHORE OF SIX MILE LAKE

SET 1" X 3/8" IRON POST WITH BRASS CAP MARKED



WITNESSED BY

ASH 8 S36 1/4 E 150 LKS. = 99.0'

ELM 20 S75 3/4 W 241 LKS. = 159.06'

WITNESS CORNER IS AT NORTH 7.81 CHS. = 515.46'

AT 8.31 CHS. SET WOOD POST AT TRUE POINT FOR M.C.  
OF SEC'S 7+8  
NO ORIG. EVIDENCE COULD BE RECOVERED

8.31 CHS. = 548.46'

FROM IRON POST TO WOOD POST IS 33.0'

MEANDER CORNER BET. SEC'S. 6+7

NOTES OF GLO RESURVEY 1937

SET 1" X 3/8" IRON POST WITH BRASS CAP MARKED

T144N

S6

MC

S7

R27W

1937

WITNESSED BY

ASH 8 S11<sup>3</sup>/<sub>4</sub>W 7 LKS. = 4.62'ASH 12 N85<sup>1</sup>/<sub>4</sub>W 49 LKS. = 32.34'

EAST BET. SEC'S. 6+7 27.45 CHS. = 1811.70'

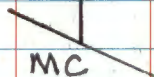
MEANDER CORNER BET. SEC'S. 5+6

NOTES OF GLO RESURVEY 1937

SET 1" X 36" IRON POST WITH BRASS CAP MARKED

T144N R27W

S6 | S5



1937

FROM REMAINS OF ORIG. BT'S.

ROTTED BIRCH STUMP 14" N60E 12 LKS. = 7.92'

BIRCH STUMP 12 N35W 70 LKS. = 46.20'

MARKED NEW BT'S.

CEDAR 8 N5E 41 LKS. = 27.06'

CEDAR 8 N88E 12 LKS. = 7.92'

CEDAR 4 N25W 20 LKS. = 13.20'

FROM THIS MC ON NE SHORE TO MC ON SW SHORE  
BET. SEC'S. 7+8 - BEARS  $50^{\circ}35'W$  101.67 CHS.  
6710.22'

QUARTER CORNER BET. SEC'S. 5+6

NOTES OF GLO RESURVEY 1937

SET 1" X 3/8" IRON POST WITH BRASS CAP MARKED

1/4  
56 | 55

1937

WITNESSED BY

N. PINE 10 N 1/4 E 82 LKS. = 54.12'

N. PINE 16 S 2 1/2 W 121 LKS. = 79.86'

Ed. 4" SQUARD SCRIBED POST AT TRUE CORNER

REPLACED ALONGSIDE IRON POST

N 2° 36' E BET. 5+6 - 13.84 CHS. = 913.44'

N 13° 48' E (N 1/2) 32.35 CHS. = 2135.1' - TO C. COR.

CORNER TO SECTIONS 11-12-13 + 14.

ORIG. GOV'T. SURVEY 1873

SET WOOD POST

TAM. 5 N30E 75 LKS. = 49.50'

TAM. 5 N39W 62 LKS. = 40.92'

GLO. Fd. FALLEN 5" TAM. N39W 62 LKS. <sup>SCRIBE VISIBLE</sup>

NO OTHER TREES

G.L.O. RESURVEY 1937

SET 6" X 24" CONCRETE CYLINDER  
WITH BRASS CAP MARKED

T144NR27W

S11 | S12

S14 | S13

FROM WHICH

1937

TAM. 4 N25 $\frac{1}{2}$ E 76 LKS. = 50.16'

J. PINE 6 S17 $\frac{1}{4}$ E 184 LKS. = 121.44'

SPRUCE 4 S2 $\frac{1}{2}$ W 176 LKS. = 116.16'

TAM. 5 N65W 126 LKS. = 83.16'

QUARTER CORNER BET. SEC'S. 12+13  
 ORIG. GOV'T. SURVEY 1873  
 SET WOOD POST

TAM. 4 S9W 8 LKS. 5.28'

TAM. 5 S83W 106 LKS. = 69.96'

GLD. RESURVEY 1937  
 PROPORTIONATE DISTANCE  
 SET 1" X 3/16" IRON POST WITH BRASS  
 CAP MARKED

$$\frac{1}{4} \frac{512}{513}$$

FROM WHICH 1937  
 TAM. 4 NORTH 334 LKS. = 220.44'  
 TAM. 4 S7 $\frac{1}{4}$ W 121 LKS. = 79.86'

QUARTER CORNER BET. SEC'S. 11+12  
 ORIG. GOV'T. SURVEY 1873  
 SET WOOD POST

TAM. STUB 6 S65E 7 LKS = 4.62'

TAM. STUB 7 N80W 5 LKS = 3.30'

GLO RESURVEY 1937

PROPORTIONATE DISTANCE

SET 1" x 3/16" IRON POST WITH BRASS  
 CAP MARKED

1/4  
 |  
 S11 | S12

FROM WHICH

1937

TAM. 5 N60E 6 LKS. = 3.96'

TAM. 6 S41 1/2 W 61 LKS. = 40.26'



QUARTER CORNER BET SEC'S, 1412  
 ORIG. GOV'T. SURVEY 1873  
 SET WOOD POST

TAM. 3 S70E 248 LKS. = 163.68'

TAM. 3 N64E 105 LKS. = 69.30'

GLO RESURVEY 1937

PROPORTIONATE DISTANCE

SET 1" X 36" IRON POST WITH BRASS  
 CAP MARKED

$\frac{1}{4} \frac{51}{512}$

FROM WHICH

1937

N. PINE 14 S6 $\frac{1}{2}$ W 596 LKS. = 393.36'  
 NOW 24"

NO OTHER AVAILABLE IN SEC. 1

3-18-08 REMAIN J. SCHOONOVER C. GEIGER

Fd IRON IN PLACE IN OPEN BLACK SPRUCE SWAMP

GPS IRON, SET 8FT STEEL SIGN POST ALONG  
 NORTH EDGE OF IRON MARK NEW WITNESS

TAMARACK 2" S22°E 45.75 FT NAIL TAG NO.  
 SCRIBE

QUARTER CORNER BET. SEC'S. 142  
 ORIG. GOV'T. SURVEY 1873  
 SET WOOD POST

TAM. 6 SIDE 12 LKS. = 7.92'

TAM. 4 S30W 18 LKS. = 11.88'

GLO RESURVEY 1937

PROPORTIONATE DISTANCE

SET 1" X 36" IRON POST WITH BRASS  
 CAP MARKED

$\frac{1}{4}$   
 S2 | S1  
 1937

FROM WHICH

W. PINE 4 S42 $\frac{1}{4}$ E 163 LKS. = 107.58'

J. PINE 4 S75 $\frac{1}{4}$ W 95 LKS. = 62.70'

3-13-08 R. MAJIN J. SAHOONOVER C. GEIGER

FD IRON IN PLACE SUNK IN SWAMP  $\pm 6"$ . DRIVE

8 FT STEEL SIGN POST ALONG NORTH EDGE OF IRON  
 AND GPS. MARK NEW WITNESS

B SPRUCE 3" S77E 60 FT ON NAIL TAG NOT  
 SCRIBED

QUARTER CORNER, BET. SECS. 2+11  
 ORIG. GOV'T. SURVEY 1873  
 SET WOOD POST

TAM. 3 S73W 80 LKS. = 52.80'

TAM. 3 N11E 38 LKS. = 25.08'

GLO RESURVEY 1937

PROPORTIONATE DISTANCE

SET 1" X 3/16" IRON POST WITH BRASS  
 CAP MARKED

$$\frac{1}{4} \frac{52}{511}$$

FROM WHICH

1937

TAM. 4 S8 1/2 E 243 LKS. = 160.38'

TAM. 4 N23W 438 LKS. = 289.08'

N79°07'E 40.95 CHS. = 2702.70

QUARTER CORNER BET. SEC'S. 11 & 14  
 ORIG. GOVT. SURVEY 1873  
 SET WOOD POST

TAM. 4 N9E 30 LKS = 19.80'

TAM. 3 S10W 40 LKS = 26.40'

GLO RESURVEY 1937

PROPORTIONATE DISTANCE

SET 1" X 36" IRON POST WITH BRASS  
 CAP MARKED

$$\frac{1}{4} \frac{S11}{S14}$$

FROM WHICH

1937

POPLAR 7 S79<sup>3</sup>/<sub>4</sub>W 181 LKS = 119.46'

POPLAR 8 S81<sup>3</sup>/<sub>4</sub>W 260 LKS = 171.60'

N81°13'E = 40.90 CHS, 2699.40'

QUARTER CORNER BET. SEC'S. 10 & 11  
 ORIG. GOV'T. SURVEY 1873  
 SET WOOD POST

J. PINE 6 SIDE 101 LKS = 66.66'

SPRUCE 4 N20W 18 LKS = 11.88'

GLO RESURVEY 1937

PROPORTIONATE DISTANCE

SET 1" X 36" IRON POST WITH BRASS  
 CAP MARKED

$\frac{1}{4}$   
 S10 | S11

FROM WHICH 1937  
 N. PINE 15 S12 $\frac{1}{4}$ E 140 LKS = 92.40'

N. PINE 15 S14 $\frac{1}{2}$ W 118 LKS = 77.88'

~~N81 $\frac{1}{2}$ E 4490 LKS = 267.94~~

QUARTER CORNER BET. SEC'S. 3+4

ORIG. GOV'T. SURVEY 1873

SET WOOD POST

J. PINE 6 N10E 14 LKS. = 9.24'

POPLAR 4 S20W 16 LKS. = 10.56'

GLO RESURVEY 1937

PROPORTIONATE DISTANCE

SET 1" X 36" IRON POST WITH BRASS

CAP MARKED

$$\begin{array}{c} \frac{1}{4} \\ \hline 54 \mid 53 \end{array}$$

FROM WHICH

1937

N. PINE 10 N67E 7 LKS. = 4.62'

W. PINE 11 N62W 33 LKS. = 21.78'

QUARTER CORNER BET. SEC'S. 34 & 35

ORIG. GOV'T. SURVEY 1873

SET WOOD POST

TAM. 6 S7W 9 LKS. = 5.94'

TAM. 3 N11E 18 LKS. = 11.88'

GLO RESURVEY 1937

PROPORTIONATE DISTANCE

SET 1" X 3/16" IRON POST WITH BRASS

CAP MARKED

$\frac{1}{4}$   
 534 | 535

FROM WHICH

1937

TAM. 5 S48 $\frac{1}{2}$ E 15 LKS. = 9.90'

TAM. 5 S39W 19 LKS. = 12.54'

QUARTER CORNER BET. SEC'S. 27 & 34  
 ORIG. GOV'T. SURVEY 1873  
 • SET WOOD POST

J. PINE 6 S10W 18 LKS = 11.88'

BIRCH 6 N18E 70 LKS = 46.20'

GLO RESURVEY 1937

PROPORTIONATE DISTANCE

SET 1" X 36" IRON POST WITH BRASS  
 CAP MARKED

$$\frac{1}{4} \frac{527}{534}$$

1937

FROM WHICH

POPLAR 8 N76 $\frac{1}{2}$ E 27 LKS = 17.82'

POPLAR 7 S60 $\frac{3}{4}$ E 47 LKS = 31.02'



QUARTER CORNER BET. SEC'S. 33+34  
 ORIG. GOV'T. SURVEY 1873  
 SET WOOD POST

TAM. 6 S19E 30 LKS = 19.80'

TAM. 8 S22W 18 LKS = 11.88'

GLO RESURVEY 1937

PROPORTIONATE DISTANCE

SET 1" X 36" IRON POST WITH BRASS  
 CAP MARKED

$\frac{1}{4}$   
 S33 | S34

FROM WHICH

1937

TAM. 5 N11 $\frac{1}{2}$ E 48 LKS = 31.68'  
 NOW 13" 31.35 TO NAIL

TAM. 6 S21W 29 LKS = 19.14'  
 NOW 16" 20.20 TO NAIL

4-19-2011 R. MAEN

Fd IRON IN PLACE UNDER SWAMP MAT.  
 STRAIGHTEN UP AND GPS. IRON IN  
 TAM/ALDER SWAMP. TAGS ON FRONT  
 OF BTS.

QUARTER CORNER BET. SEC'S. 32 & 33

ORIG. GOV'T. SURVEY 1873

SET WOOD POST

TAM. 4 S13W 19 LKS = 12.54'

TAM. 4 N11E 23 LKS = 15.18'

GLO RESURVEY 1937

PROPORTIONATE DISTANCE

SET 1" X 36" IRON POST WITH BRASS  
CAP MARKED

$$\begin{array}{c} \frac{1}{4} \\ \hline 532 \mid 533 \end{array}$$

FROM WHICH

1937

TAM. 5 S48E 26 LKS = 17.16'

TAM. 6 S71 $\frac{1}{2}$ W 18 LKS = 11.88'

QUARTER CORNER BET. SEC'S. 21+28

ORIG GOV'T. SURVEY 1873

SET WOOD POST

CEDAR 8 EAST 100 LKS = 66.10

NO OTHER

GLO RESURVEY 1937

PROPORTIONATE DISTANCE

SET 1" X 3/8" IRON POST WITH BRASS  
CAP MARKED

$$\frac{1}{4} \frac{521}{528}$$

FROM WHICH

1937

POPLAR 9 N81E 37 LKS = 24.42'  
NO EVIDENCE 12-1-2010

BIRCH 8 S51 1/2 E 29 LKS = 19.14'

BIRCH STA @ BRG & DIST 12-1-2010

12-1-2010 R. MAIN

FD IRON IN PLACE & GPS. ASH AND ALDER

ASH 6" N58W 11.30 FT TO SPK: NOT MKD

ASH 11" S43W 17.47 FT TO SPK: NOT MKD

CORNER TO SECTIONS 19-20-29+30  
 ORIG. GOV'T. SURVEY 1873  
 SET WOOD POST

TAM. 4 S12W 8 LKS. = 5.28'

TAM. 5 S9W 7 LKS. = 4.62'

TAM. 4 S50E 38 LKS. = 25.08'

TAM. 4 N53E 27 LKS. = 17.82'

GLO RESURVEY 1937

PROPORTIONATE DISTANCE

SET 6" X 24" CONCRETE CYLINDER  
 WITH BRASS CAP MARKED

T144N R27W

S19	S20
S30	S29

FROM WHICH

1937

TAM. 10 S89½E 442 LKS. = 291.72'

POPLAR 16 N88°35'W 798 LKS. = 526.68'

NO OTHER TREES AVAILABLE

QUARTER CORNER BET. SEC'S. 19+30.  
 ORIG. GOV'T. SURVEY 1873  
 SET WOOD POST

TAM. 4 S39W 19 LKS. = 12.54'

TAM. 4 N21E 13 LKS. = 8.58'

GLO RESURVEY 1937

PROPORTIONATE DISTANCE

SET 1" x 3/16" IRON POST WITH BRASS  
 CAP MARKED

$$\frac{1}{4} \frac{S19}{S30}$$

FROM WHICH

1937

TAM. 5 S57 $\frac{1}{4}$ W 328 LKS. = 216.48'

TAM. 5 N88 $\frac{1}{2}$ W 413 LKS. = 272.58'

36

QUARTER CORNER, BET. SEC'S. 29 &amp; 30

ORIG. GOV'T. SURVEY 1873

SET WOOD POST

TAM. 4 S22E 40 LKS. = 26.40'

TAM. 6 S45W 31 LKS. = 20.46'

GLO RESURVEY 1937

PROPORTIONATE DISTANCE

SET 1" x 3/8" IRON POST WITH BRASS

CAP MARKED

 $\frac{1}{4}$ 

S30 | S29

FROM WHICH

1937

POPLAR 6 S41E 21 LKS. = 13.86'

SPRUCE 4 N17 $\frac{3}{4}$ W 26 LKS. = 17.16'

CORNER TO SECTIONS 29-30-31+32

ORIG. GOV'T. SURVEY 1873

SET WOOD POST

TAM. 6 N75E 7 LKS. = 4.62'

SPRUCE 4 N58W 11 LKS. = 7.26'

TAM. 8 S45E 28 LKS. = 18.48'

SPRUCE 4 S20W 12 LKS. = 7.92'

GLO RESURVEY 1937

PROPORTIONATE DISTANCE

SET 1" X 36" IRON POST WITH BRASS  
CAP MARKED

T144N R27W

330	529
531	532

FROM WHICH

1937

TAM. 5 N4½E 86 LKS. = 56.76'

W. PINE 8 S44½W 389 LKS. = 256.74'

TAM. 6 N32¾W 91 LKS. = 60.06'

QUARTER CORNER BET. SEC'S. 30 & 31

ORIG. GOV'T. SURVEY 1873

SET WOOD POST

TAM. 4 S17½W 80 LKS. = 52.80'

TAM. 6 N6E 17 LKS. = 11.22'

GLO RESURVEY 1937

PROPORTIONATE DISTANCE

SET 1" X 36" IRON POST WITH BRASS

CAP MARKED

$$\frac{1}{4} \frac{S30}{S31}$$

FROM WHICH

1937

TAM. 7 N88¼E 100 LKS. = 66.0'

TAM. 9 S38½E 87 LKS. = 57.42'



QUARTER CORNER BET. SEC'S. 29+32  
 ORIG. GOV'T. SURVEY 1873  
 SET WOOD POST

TAM. 6 S20W 30 LKS = 19.80'

TAM. 5 N10E 8 LKS. = 5.28'

GLO RESURVEY 1937

PROPORTIONATE DISTANCE

SET 1" X 36" IRON POST WITH BRASS  
 CAP MARKED

$$\frac{1}{4} \frac{S29}{S30}$$

FROM WHICH

1937

TAM. 4 N5½E 36 LKS = 23.76'

TAM. 5 S54¾W 61 LKS = 40.26'

QUARTER CORNER BET. SEC'S. 29+32

ORIG. GOV'T. SURVEY 1873

SET WOOD POST

TAM. 6 S20W 30 LKS = 19.80'

TAM. 5 N10E 8 LKS. = 5.28'

GLO RESURVEY 1937

PROPORTIONATE DISTANCE

SET 1" X 36" IRON POST WITH BRASS

CAP MARKED

$$\frac{1}{4} \frac{S29}{S30}$$

FROM WHICH

1937

TAM. 4 N5½E 36 LKS = 23.76'

TAM. 5 S54¾W 61 LKS = 40.26'

QUARTER CORNER BET. SEC'S, 31 & 32  
 ORIG. GOV'T. SURVEY 1873  
 SET WOOD POST

TAM. 6 S3E 84 LKS. = 55.44'

TAM. 4 N70W 64 LKS. = 42.24'

GLO RESURVEY 1937

PROPORTIONATE DISTANCE

SET 1" X 36" IRON POST WITH BRASS  
 CAP MARKED

$\frac{1}{4}$

S31 | S32

FROM WHICH

1937

TAM. 5 S73½E 72 LKS. = 47.52'

TAM. 4 N11W 45 LKS. = 29.70'

QUARTER CORNER, BET. SEC'S. 18 + 19  
 ORIG. GOV'T. SURVEY 1873  
 SET WOOD POST

BIRCH 5 S33W 19 LKS. = 12.54'

BIRCH 3 N8E 78 LKS. = 51.48'

GLO RESURVEY 1937  
 PROPORTIONATE DISTANCE  
 SET 1" X 3/8" IRON POST WITH BRASS  
 CAP MARKED

$$\frac{1}{4} \frac{518}{519}$$

FROM WHICH 1937  
 TAM. 8 S68<sup>1</sup>/<sub>4</sub>E 453 LKS. = 298.98'

CEDAR 6 N19<sup>3</sup>/<sub>4</sub>W 202 LKS. = 133.32'

MEANDER CORNER BET. SEC'S, 19+30  
ON EAST SHORE OF DRUM BEATER LAKE  
ORIG. GOV'T. SURVEY 1873  
SET WOOD POST

TAM. 4 S37E 20 LKS = 13.20'

TAM. 4 N21 $\frac{1}{2}$ E 18 LKS = 11.88'

GLO RESURVEY 1937

ORIG. DISTANCE

SET 1" X 3/8" IRON POST WITH BRASS  
CAP MARKED

T144N  
MC  $\frac{S19}{S30}$

R27W

FROM WHICH

1937

TAM. 6 S84E 11 LKS = 7.26'

CEDAR 7 N21 $\frac{3}{4}$ W 40 LKS = 26.40'

## SECTION 211

JUN-AUG 1937 DEPENDENT RESURVEY PG 4

SET IRON POST 3' X 2" 26" IN THE GROUND WITH

BRASS CAP MKD: T145NR2TW  
536(CORNER SET PROPORTIONATE)  $\frac{52}{TKM} \frac{51}{R2TW}$   
CL  
1937

WITNESS WITH

TAM 6" 539½E 222LKS

JRENE 4" 542½W 114LKS

9-7-1965 MORRISON TUCKER

FD BRASS CAP SLIGHTLY ABOVE GROUND. TAG ON SE  
SIDE 2" SPRUCE. CORNER 5' SE OF SPRUCE.  
FD RESURVEY BTS AS STUMPS. TAG ON OLD WOODS  
TRAIL 3 CHAINS WEST.

3-13-08 RMAIN

FD IRON IN PLACE AND GPS. DRIVE 8 FT STEEL  
SIGN POST ALONG NORTH EDGE OF IRON/W/  
ATTENTION SIGN. TAG STILL ON WOODS ROAD.  
WITNESS WITH

TAM 4" N73°W 170 FT TO NAIL NOT SCRIBED

AS PRUCE 3" S28°E 110.5 FT TO NAIL " "

NORTH  $\frac{1}{4}$  SECTION 1

1937 GLO RESURVEY

SET IRON POST 3' X 2" 26" IN THE GROUND WITH

BRASS CAP MKD  $\frac{451}{1937}$ TAMARACK 10" N8 $\frac{1}{2}$ W 326 LKS MKD: BT  
NOW 16" DEAD TREE

3-17-08 R MAIN J SCHOONOVER

FD IRON IN PLACE AND GPS. PLACE 8 FT STEEL SIGN  
POST ALONG NORTH SIDE OF IRON. MAKE ON NEW  
WITNESS NOT SCRIBED.

TAMARACK 4" NZSE 346 FT TO NAIL

QUARTER CORNER SEC 21/22

ASPEN 8" S4E 1901KS 125.4 FT

BIRCH 6" S1E 1631KS 107.58 FT

REMAIING PAGES  
ARE BLANK