

T. 144 N.
R. 25 W.
Sec 9
T. 144 N. R. 25 W. Sec 9

T. 144 N.

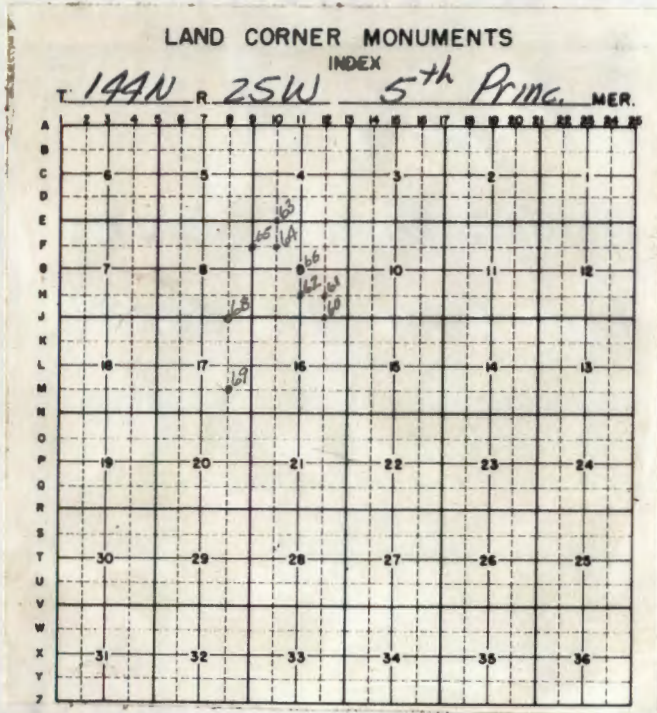
R. 25 W.

Sec 9 Sub

Sec 17 Sub

Book
4

Index



CASS COUNTY, MN USFS

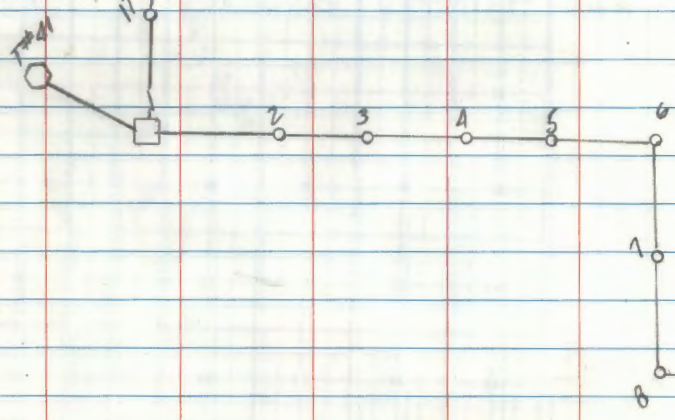
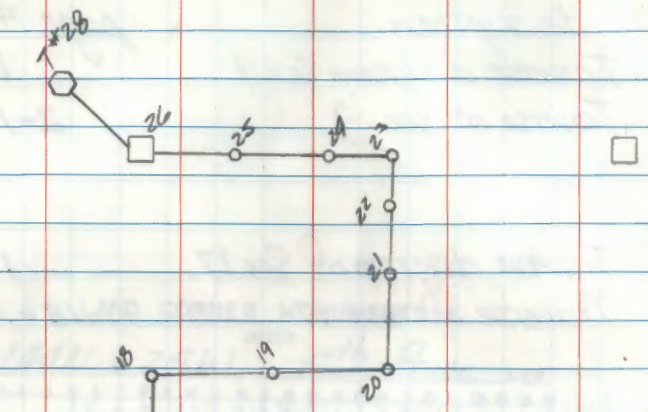
Index

description	page #
Traverse diagram sec 9	1
Traverse of sec 9	2-16

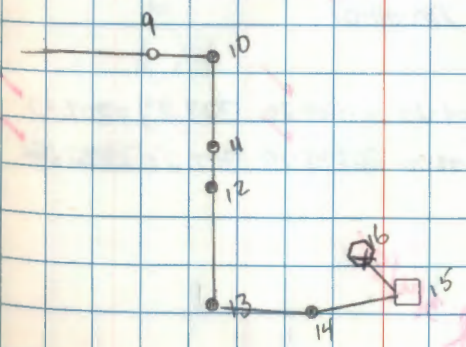
Traverse diagram of Sec 17	17
Traverse of sec 17	18-32

Angles to set corner position and property boundary	69
--	----

TRAVERSE DIAGRAM



OF SECTION 9



2 T144NR25W Sec 9 Sub

Interior traverse of section 9

STA 1st 11.3 D 2nd 4.8 D 3rd 11.5 D 4th 11.8 D

Hx

FS 2 159-06-07 339-06-20 159-06-10 339-06-25

BS 4 180-00-00 180-00-00 180-00-00 180-00-00

TD 1 159-06-07 159-06-20 159-06-10 159-06-25

159-06-16

Dist 1-2 90-13-05 269-47-00 269-48-58 952.82' 952.82⁸¹

Dist 2-1 87-50-10 270-10-00 270-09-55 952.77' 952.77

FS 3 180-00-00 359-59-57 180-00-00 360-00-00

BS 1 180-00-00 179-59-55 180-00-00 180-00-00

TD 2 180-00-00 180-00-02 180-00-00 180-00-00

180-00-01

Dist 2-3 88-55-40 271-04-20 271-04-20 307.27 307.22

Dist 3-2 71-11-50 268-48-10 268-48-10 307.26 307.19

JJR 3/4/85

Feb 19, 1985

2

clear, cool, breeze

G. Robertson RC.

Temp 37°F

K. Zimmerman aid

Hq 29.5

G. Shultz aid

Leitz T600 #158830

Topcon

T144NR25W

1/4

58-59

1984

RLS 9235

STA 1 =

952.79

2.37 2" aspen

STA 2 = 60d spike

8.57

20" birch

307.205

3

TRAIL R25W Sec 9

Traverse cont'd from pg 2

STA 1st H&D 2nd H&R 3rd H&D 4th H&R

HX

FS 4 179-59-50 360-00-00 179-59-50 360-00-00

BS 2 00-00-00 179-59-50 00-00-00 179-59-50

T@ 3 179-59-50 180-00-10 179-59-50 180-00-10

180-00-00

Dist 3-4 90-35-40 269-23-40 269-24-00 819.20
249.69 819.16

Dist 4-3 89-28-50 270-31-10 270-31-10 819.20 819.17

FS 5 179-59-50 360-00-00 179-59-50 360-00-00

BS 3 00-00-00 179-59-55 00-00-00 179-59-50

T@ 4 179-59-50 180-00-05 179-59-50 180-00-10

179-59-59

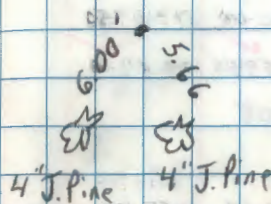
Dist 4-5 89-28-50 270-30-00 270-30-35 401.38 401.36

Dist 5-4 90-37-10 269-23-00 269-22-55 401.38 401.36

JBR 2/4/85

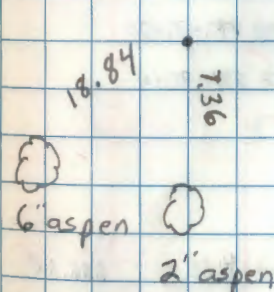
Feb 20, 1985

3

Same crew + instruments
as previous day

STA 3 = 60d spike

819.17



STA 4 = 60d spike

401.36

4 T144N R25W Sec 9 Sub

Traverse Cont'd from Pg 3

STA 1stH&D 2ndH&R 3rdH&D 4thH&R
H&R

FS 6 179-59-00 ⁸⁶359-59-10 179-58-55 359-59-15

BS 4 00-00-00 179-59-55 00-00-00 179-59-55

X@ 5 179-59-00 179-59-15 179-58-55 179-59-20

179-57-08

Dist. 5-6 71-42-40 268-17-15 268-17-18 163.73 163.66

Dist. 6-5 88-31-00 271-29-00 271-29-00 163.72 163.67

FS 7 271-30-50 ⁴⁶271-30-46 ²⁹91-30-25 271-30-50 91-30-30

BS 5 00-00-00 179-59-55 00-00-00 179-59-50

X@ 6 271-30-46 271-30-20 271-30-50 271-30-40

271-30-42

Dist 6-7 90-13-20 269-46-40 269-46-40 626.35 626.35

Dist 7-6 89-51-10 270-09-00 270-08-55 626.34 626.34

JJR 3/4/85

106.35

Feb 21, 1985

G. Robertson

B. Ausk

J. Skelly

same instruments

3" J. Pine

11.89

STA. 5 = 60d spike

8.36

5" J. Pine

6" J. Pine

163.66

Approx C/4

9.00

STA 6 = 60d spike

5" balsam

626.34

5 T144N R25W Sec 9 Sub

Traverse Cont'd from pg 4

STA 1stH&D 2ndH&R 3rdH&D 4thH&R
H&R

FS 8 179-59-55 360-00-00 179-59-55 357-57-55

BS 6 00-00-00 179-59-55 00-00-00 179-57-55

TP 7 179-59-55 180-00-05 179-59-55 180-00-00

179-59-59

Dist 7-8 90-42-55⁴² 269-17-20 269-17-13 680.10 680.05

Dist 8-7 89-21-30 270-39-00 270-38-45 680.10 680.06

FS 9 89-08-04 269-08-10 89-08-05 269-08-15

BS 7 00-00-00 180-00-00 00-00-00 180-00-00

TP 8 89-08-04 89-08-10 89-08-05 89-08-15

89-08-09

Dist 8-9 70-03-55 269-56-40 269-56-23 1123.01 1123.01

Dist 9-8 89-59-20 270-01-00 270-00-50 1123.02 1123.02

JJR 3/5/85

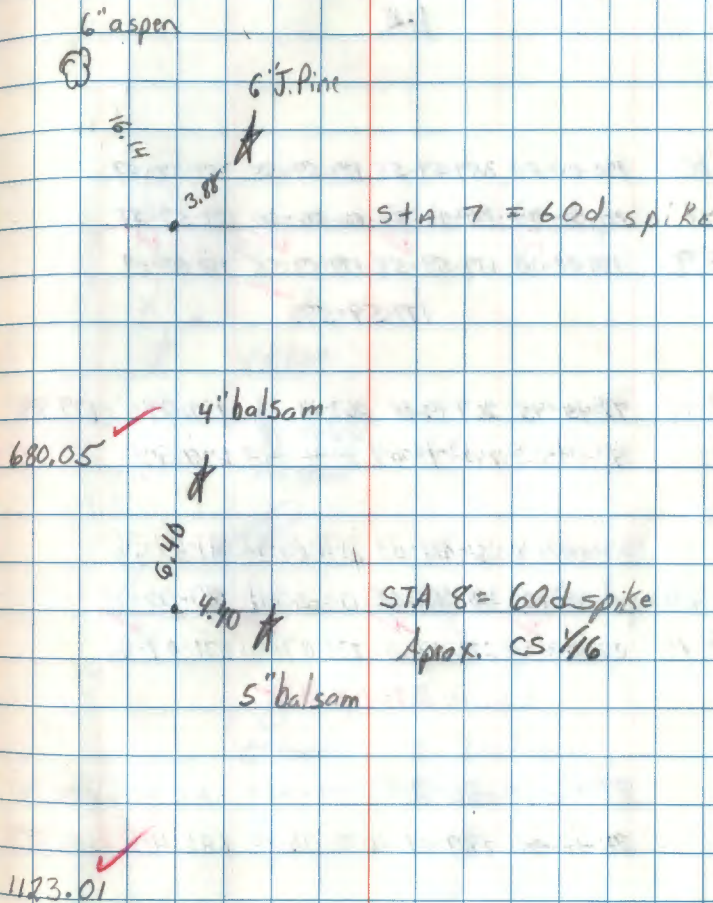
179.77
10.11

1130.21

1302.78

279.22

Feb 21, 1985



6

T144N R25W Sec 9 Sub

Traverse Cont'd from pg 5

STA 1st H&D 2nd H&R 3rd H&D 4th H&R
H4

FS 10 180-00-00 259-59-58 179-59-55 359-59-57

BS 8 00-00-00 180-00-00 00-00-00 179-59-58

TP 9 180-00-00 179-59-58 179-59-55 180-00-01
179-59-59

Dist 9-10 72-45-45 267-14-10 267-14-13 180.09 179.88

Dist 10-9 87-45-28 272-14-04 ²⁷²⁻¹⁴⁻¹⁸ ~~274-45-42~~ 179.99 179.85

FS 11 271-07-40 91-07-33 271-07-42 91-07-36

BS 9 00-00-10 10-00-00 00-00-11 180-00-00

TP 10 271-07-30 271-07-33 271-07-31 271-07-36

271-07-33

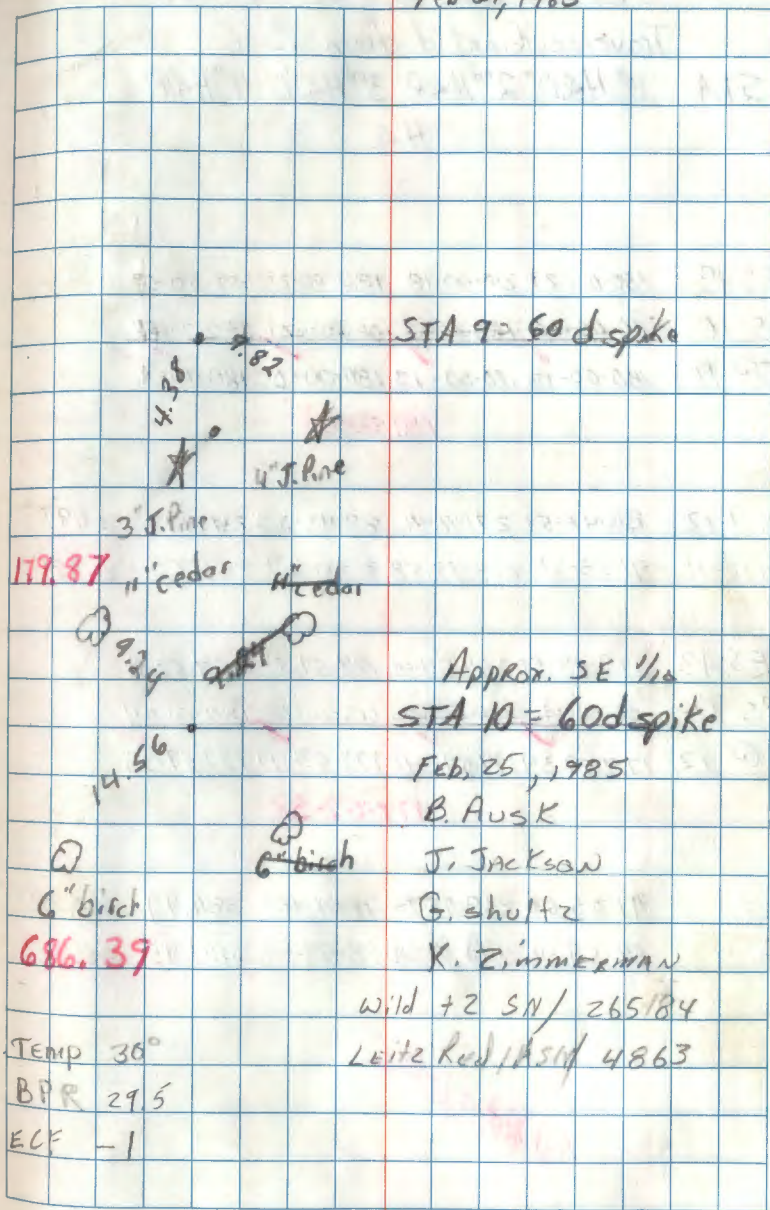
Dist 10-11 89-46-58 270-12-42 89-47-08 686.40 686.40

Dist 11-10 90 ¹⁶⁻⁰⁰ ~~17-48~~ 269-43-40 90-16-10 686.40 686.39

JBR 3/5/85

Feb 21, 1985

6



T 144N R 25W Sec 9 Sub

Traverse Cont'd from Pg 6

STA 1st H&D 2nd H&R 3rd H&D 4th H&R
H&R

FS 10 180-00-23 00-00-18 180-00-24 00-00-18

BS 10 00-00-20 180-00-25 00-00-21 180-00-17

T@ 11 180-00-03 180-00-13 180-00-03 180-00-11

180-00-08

Dist 11-12 88-42-51 271-16-46 88-43-03 249.99 249.93

Dist 12-11 91-25-51 219-38-58 91-25-57 250.00 249.92

FS 13 179-59-50 359-59-00 179-59-51 359-59-39

BS 12 00-00-11 180-00-00 00-00-10 180-00-09

T@ 12 179-59-34 179-59-46 179-59-41 179-59-35

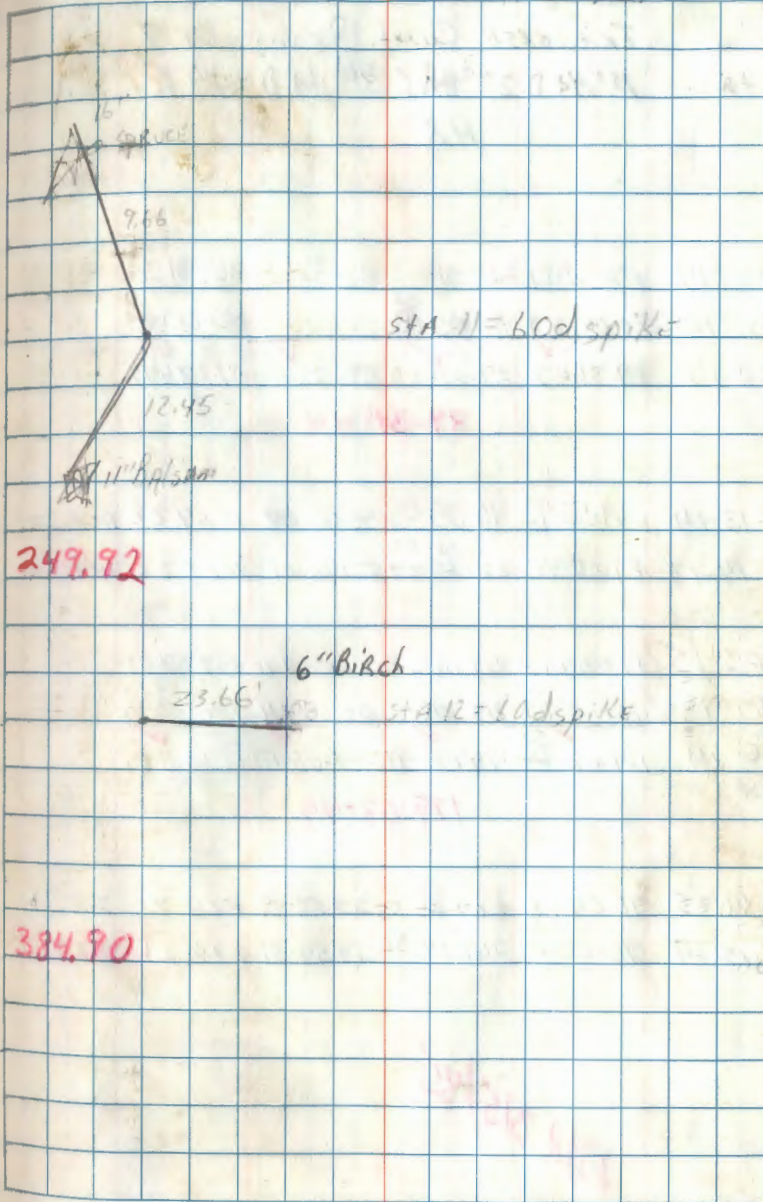
179-59-38

Dist 91-05-51 218-53-50 91-06-01 384.97 384.90

Dist 88-59-46 270-59-51 88-59-58 384.95 384.89

JJA 3/5/85

Feb. 25 7



7 8

T144N R25W Sec 9 Sub

TRAVERSE Cont. From Pg 7

STA 1st H&D 2nd H&R 3rd H&D 4th H&R

HA

F	FS 14	89-32-06	269-31-52	89-32-08	269-31-54
BS	BS 12	00-00-23	180-00-08 ⁰²	00-00-28	180-00-06
TA	TA@ 13	89-31-43	89-31-50	89-31-40	89-31-48

89-31-44

Dist.	Dist. 13-14	269-53-42	90-05-58	90-06-08	1069.22	1069.22
-------	-------------	-----------	----------	----------	---------	---------

Dist.	Dist. 14-13	89-55-48	270-08-50 ⁰²⁻⁵⁰	270-04-01	1069.22	1069.22
-------	-------------	----------	----------------------------	-----------	---------	---------

F	FS 15	179-09-13	359-08-58	179-09-10	359-09-01
---	-------	-----------	-----------	-----------	-----------

R	BS 13	00-00-23	180-00-11	00-00-24	180-00-10
---	-------	----------	-----------	----------	-----------

TA	TA@ 14	09-08-40 ⁵⁰	179-08-47	179-08-46	179-08-51
----	--------	------------------------	-----------	-----------	-----------

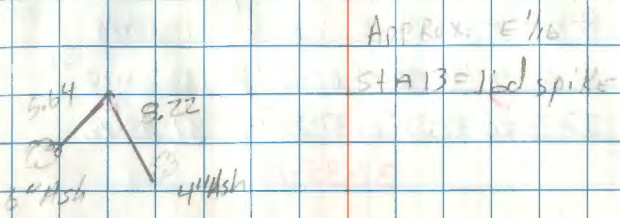
179-08-49

Dist.	Dist. 14-15	90-04-18	269-55-55 ⁵⁵	269-55-49	228.21	228.21
-------	-------------	----------	-------------------------	-----------	--------	--------

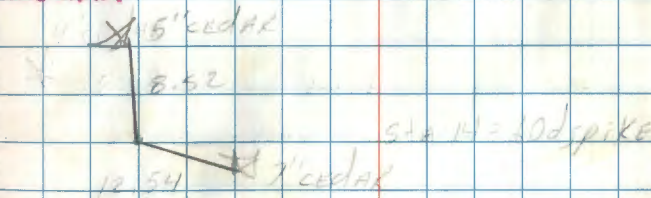
Dist.	Dist. 15-14	90-05-15	269-54-32	269-54-39	228.21	228.21
-------	-------------	----------	-----------	-----------	--------	--------

18R 3/5/85

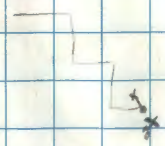
FEB 25 8



1069.22



228.21



2

9

T144N R25W SEC 9 Sub

TRAVERSE Cont. from Pg 8

Sta 1st H&D 2nd H&R 3rd H&D 4th R

H&R

27-35-39

F ES 16 ~~90-10-44~~ 217-35-25 217-35-²⁶~~26~~ 217-35-18BS 14 20-00-19 180-00-04 20-00-¹³~~13~~ 180-00-00T @ 15 37-35-20 37-35-²¹~~21~~ 37-35-14 37-35-¹⁵~~15~~

37-35-18

Dist

Dist 15-16 90-10-44 267-50-00 269-49-38 113.28

END TRAVERSE

Dist

Dist

JGR 3/5/85

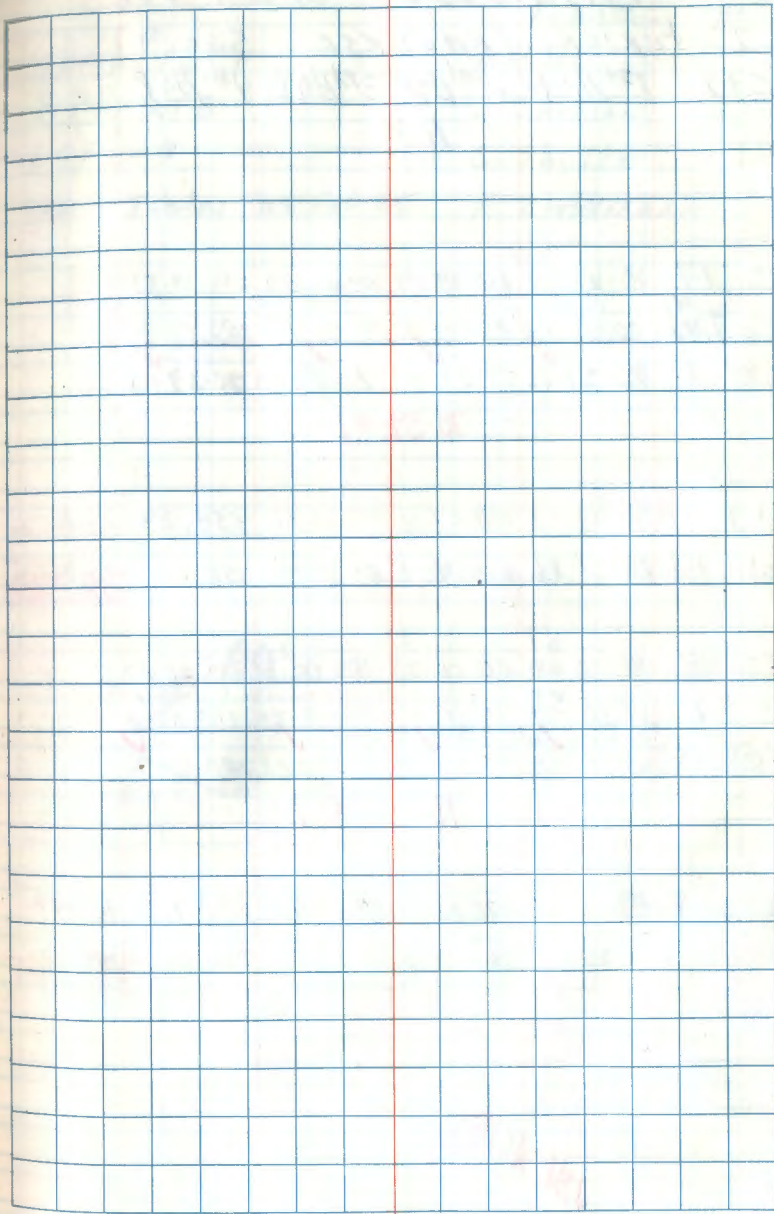
Feb 25⁹

113.28

Sta 15 = Sec. Cor

113.28

Sta 16 = TARGET #52



11 T144N R.25W SEC 9 Sub

INTERIOR TRAVERSE SEC. 9

STA. 1st HAD 2nd HAD 3rd HAD 4th HAD

HX

FS 17 70-40-07 250-39-59 70-40-07 250-39-55

BS TAP⁴¹ 00-00-22 180-00-10 00-00-24 180-00-15

T@ 1 70-39-45 70-39-49 70-39-43 70-39-40

70-39-44

Dist. 1-17 90-32-23 269-27-10 90-32-36 558.29 558.26

Dist. 17-1 89-31-36 270-28-15 89-31-41 558.27 558.25

FS 18 180-00-~~59~~³¹ 20-00-23 180-00-30 00-00-27

BS 1 00-00-~~23~~²⁷ 180-00-15 00-00-25 180-00-16

T@ 17 180-00-04 180-00-08 180-00-05 180-00-11

180-00-07

Dist. 17-18 89-27-43 270-32-10 89-27-46 750.02 749.99

Dist. 18-17 90-35-21 269-24-30 90-35-26 750.01 749.97

JAR 2/5/85

Feb. 26, 1985

TEMP 12° F

B. Ausk

BPR 29.8

J. Jackson

ECF -3

G. Shultz

SAME Instr. AS Feb 25

K. ZIMMERMAN

558.26

5.76 4" Birch

8.54 11" ASPEN
STA 17 = 60d SPIKE

749.98

T144N R25W SEC 9 Sub.

TRANSVERSE Cont from Pg 11

STA 1st H&D 2nd H&R 3rd H&D 4th H&R

H&

FS 19	268-08-5 ⁶	88-08-41	268-08-47	88-08-34
BS 17	00-00- ²⁶	180-00-06	00-00-15	180-00-90
T@ 18	268-08-30	268-08-35	268-08-32	268-08-34

268-08-33

Dist. 18-19 90-12-33 269-42-10 90-17-42 674.05 674.04

Dist. 19-18 89-45-35 270-14-03 89-45-46 674.04 674.03

FS 20 180-00-3⁴ 00-00-21 180-00-27 00-00-15BS 18 00-00-19 180-00-06 00-00-~~13~~ 180-00-05

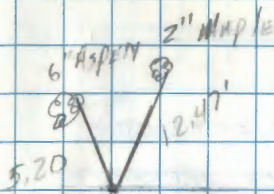
T@ 19 180-00-16 180-00-15 180-00-14 180-00-10

180-00-14

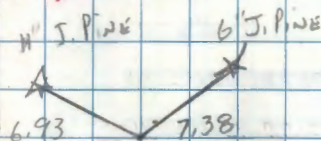
Dist. 19-20 90-06-58 269-52-41 90-07-08 647.74 647.74

Dist. 20-19 89-56-04 270-03-25 89-56-20 647.73 647.73

PR 3/5/85

Approx N 1/16
Sta 18 = 60d spike

674.035



Sta 19 = 60d spike

647.73

49.20	647.74
47.74	607.85
46	39.89

13 T144N R25W SEC 9 Sub

Cont. from Pg 12

STA 1st H&D 2nd H&R 3rd H&D 4th H&R
H&D

FS 21 91-50-28 271-50-11 91-50-20 271-50-10

BS 19 20-00-23 180-00-08 00-00-22 180-00-07

T@ 20 91-50-05 91-50-03 91-50-58 91-50-03

91-50-02

Dist. 20-21 89-57-52 270-01-32 89-58-10 645.30 645.30

Dist. 21-20 90-05-15 269-54-20 90-05-23 645.31 645.31

FS 22 180-00-38 00-00-27 180-00-38 00-00-26

BS 20 00-00-29 180-00-10 00-00-24 180-00-19

T@ 21 180-00-18 180-00-17 180-00-14 180-00-16

180-00-16

Dist. 21-22 90-09-41 269-49-58 90-09-52 340.49 340.49

Dist. 22-21 89-56-43 270-02-58 89-56-53 340.48 340.48

JMA 3/5/85

Feb. 27, 1985

Temp. 15°

BAR 29.9

ELF -2

B. HUSK

J. JACKSON

G. SHULTS

K. ZIMMERMAN

6" J. Pine

SAME INSTRUMENTS AS 2/26

★

APPROX. NW 1/4

4.94

STA 20 = 60d SPIKE

10.80

★ 7" J. Pine

645.30

3" ASPEN

4" ASPEN

⊙

5.59

STA 21 = 60d SPIKE

4.32

329.35

340.48

669.84

14 T144N R25W Sec 9 sub

Cont from Pg 13

STA 1st H&D 2nd H&R 3rd H&D 4th H&R.
H&

FS 23 180-00-34 00-00-23 180-00-38 00-00-30

BS 21 00-00-20 180-00-12 00-00-19 180-00-14

π@ 22 180-00-14 180-00-11 180-00-09 180-00-16

180-00-13

Dist: 22-23 94-03-43 265-~~52-23~~⁵⁵⁻⁴² 94-04-01 330.15 329.32

Dist: 23-22 86-02-43 273-56-50 273-57-04 330.08 329.30

FS 24 87-52-21 267-52-11 87-52-20 267-52-10

BS 22 00-00-23 180-00-10 00-00-18 180-00-05

π@ 23 87-51-59 87-52-01 87-52-02 87-52-05

87-52-02

Dist: 23-24 88-32-13 271-27-21 88-32-26 730.86 730.62

Dist: 24-23 91-30-28 268-29-13 268-29-23 730.86 730.61

JXR 3/5/85

6" Birch

⊙

23.11

6" Maple

26.75

⊙

sta 22 = 60d spike

30-8-11

3" Ash

329.31

⊙

7.25

4" Ash

⊙ 6.10

Approx W 1/16

sta 23 = 60d spike

730.61

16

T144N R25W Sec 9 Sub

Cont. from Pg 15

STA 1st H&R 2nd H&R 3rd H&R 4th H&R

H&R

FS 27 253-59-06 73-58-57 253-59-01 73-58-59

BS 25 00-00-16 180-00-03 00-00-14 180-00-00

TQ 26 253-58-50 253-58-55 253-58-50 253-58-54

253-58-52

Dist. 26-27 91-06-00 268-53-33
253-09-56 268-53-47 312.64

END TRAVERSE

JHR 5/3/85

16

Feb 28

T144N R25W
55.54
58.59
1984
1159235

STA 26 =

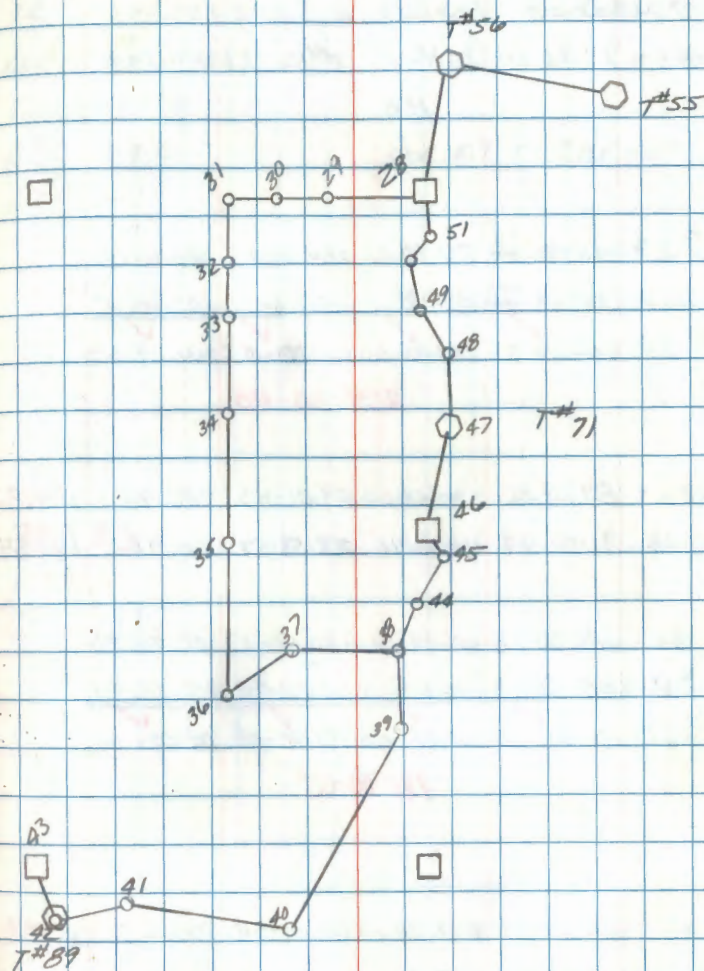
312.58

STA 27 = TARGET # 28

TRAVERSE DIAGRAM



OF SEC 17



18

T144N R25W SEC. 17 Sub

INTERIOR TRAVERSE SEC. 17

STA 1st HAR D. 2nd HAR P. 3rd HAR D. 4th HARH₂FS 29 264-30-¹⁵~~34~~ 84-30-11 264-30-25 84-30-14BS 27 00-00-²⁰~~39~~ 180-00-11 00-00-20 180-00-15T@28 264-29-55 264-30-00 264-~~30~~-05 264-29-59

264-30-00

Dist. 28-29 89-01-26 270-58-00 89-01-43 780.93 780.82

Dist. 29-28 91-00-49 268-58-46 268-58-59 780.96 780.84

FS 30 180-00-18 00-00-10 180-00-17 00-00-06

BS 28 00-00-13 180-00-08 00-00-09 180-00-01

T@29 180-00-[✓]05 180-00-[✓]02 180-00-[✓]08 180-00-[✓]05

180-00-05

Dist. 29-30 87-41-17 272-18-10 87-41-34 300.55 300.31

Dist. 30-29 92-28-42 267-31-10 92-28-46 300.58 300.30

CK BA 3-26-85

34

Feb. 28

T2 SN/265184

B. Ausk G. Robertson

LEDIA SN/4863

G. Shulte K. Zimmermann

Temp 30°F

BPR 29.2

STA 27 = TARGET

ECF -1

NE COR SEC 17

STA 28 = 60 d spike

780.83

7" MAPLE

6.37

6.28

STA 29 = 60 d spike

11" Birch

300.305

19 T144N R25W Sec 17 Sub.

Cont. from Pg 18

STA 1st H&D 2nd H&R 3rd H&D 4th H&R
H&R

FS 31 180-00-01 359-59-49 179-59-59 359-59-47

BS 29 00-00-15 180-00-05 00-00-11 180-00-02

T @ 30 179-59-46 179-59-44 179-59-48 179-59-45

179-59-46

Dist. 30-31 90-47-46 269-11-47 90-48-00 242.12 242.10

Dist. 31-30 89-16-04 270-47-50 89-16-17 242.12 242.10

FS 32 89-22-56 269-~~22-46~~²⁷⁻⁵⁵ 89-23-09 269-23-04

BS 30 00-00-30 180-00-~~28~~²⁸ 00-00-32 180-00-28

T @ 31 89-22-26 89-22-~~27~~³⁷ 89-22-32 89-22-36

89-22-33

Dist. 31-32 89-22-36 270-37-13 89-22-42 1003.68 1003.62

Dist. 32-31 90-38-25 269-21-21 90-38-32 1003.68 1003.62

CKBA 3-26-85

19
Feb. 28

1" Aspen Stake

⊙

STA 30 = 60d spike

⊙

3/4" Aspen

242.10 ✓

3-25-85

3" Basswood

Approx E 1/16

G. Kosenko

⊙ 59.16'

STA 31 = 60d spike

B. Ausk

G. Roberts

T-2 SN/ 265184

Red IA SN/ 4863

Temp 50° F

BAR = 29.7

ECF = ± 0

1003.62 ✓

20

T144N R25W Sec 17 Sub

Cont. from Pg 19

STA 1st H&D 2nd H&R 3rd H&D 4th H&R

H&R

FS 33 180-00-~~30~~²¹ 00-00-11 180-00-21 00-00-08BS 31 00-00-~~30~~⁴⁵ 180-00-31 00-00-40 180-00-31X@ 32 ~~180-00-30~~¹⁷⁹⁻⁵⁹⁻³⁶ 179-59-40 179-59-41 179-59-37

179-59-39

Dist. 32-33 89-58-12 270-01-34 89-58-19 552.06 552.06

Dist. 33-32 90-05-29 269-54-16 90-05-37 552.07 552.07

FS 34 180-00-46 00-00-³⁴ 180-00-43 00-00-74

BS 32 00-00-26 180-00-18 00-00-33 180-00-22

X@ 33 180-00-20 180-00-16 180-00-10 180-00-12

180-00-15

Dist. 33-34 90-41-28 269-12-16 90-41-36 957.85 957.78

Dist. 34-33 89-20-26 270-39-21 89-20-33 957.86 957.80

CKBA 3-27-85

3-25-85

20

sta 32 = 60d spike

552.065 ✓

957.79 ✓

21

T 144 N R 25 W Sec 17 Sub

Cont from Pg 20

STA 1st HD 2nd HD 3rd HD 4th HD

H X

FS 35 180-00-39 00-00-25 180-00-35 00-00-22

BS 33 00-00-28 180-00-11 00-00-24 180-00-12

T @ 34 180-00-10 180-00-14 180-00-11 180-00-10

180-00-11

Dist. 34-35 90-48-18 269-11-23 90-48-28 777.99 777.91

Dist. 35-34 89-14-25 270-45-25 89-14-30 777.99 777.92

FS 36 180-00-36 00-00-23 180-00-35 00-00-23

BS 34 00-00-22 180-00-12 00-00-23 180-00-15

T @ 35 180-00-14 180-00-11 180-00-12 180-00-08

180-00-11

Dist. 35-36 89-44-54 270-14-56 89-44-59 632.65 632.69

Dist. 36-35 90-18-15 269-41-30 90-18-23 632.68 632.67

CK BA 3-27-85

632.66

3-26-85

21

Temp 35°F

BPR = 29.3

ECF = 0

G. KOSENKO

B. AUSK

G. ROBERTSON

SAME INSTR.

sta 34 = God spike

777.915 ✓

3" MAPLE

8.3
11.50

sta 35 = God spike

6.3
13.60

13" ASPEN

632.655 ✓

270-16-55
632.65

632.66

T144N R25W SEC 17 Sub

Cont. from pg 21

STA	1 st H&R	2 nd H&R	3 rd H&R	4 th H&R
		H&R		

FS 37 31-08-31 211-08-17 31-08-21 211-08-11

BS 35 00-00-22 180-00-08 00-00-16 180-00-05

T@ 36 31-08-09 31-08-09 31-08-05 31-08-06

31-08-07 ✓

Dist. 36-37 90-54-00 269-05-45 90-54-08 219.05 219.02

Dist. 37-36 89-15-42 270-43-53 89-15-55 219.04 219.02

FS 38 250-05-25 70-05-11 250-05-23 70-05-10

BS 36 00-00-10 179-59-56 00-00-08 179-59-50

T@ 37 250-05-15 250-05-15 250-05-15 250-05-20

250-05-16 ✓

Dist. 37-38 90-28-09 269-31-35 90-28-17 697.68 697.66

Dist. 38-37 89-34-52 270-25-05 89-34-53 697.67 697.65

CK BA 3-27-85

3-26-85

APPROX SE 1/4

sta 36 = 60d spike

219.02 ✓

4" ASPEN

9.61

sta 37 = 60d spike

10.27

14" ASPEN

697.655 ✓

T144N R25 W S4C17 S1D

Cont from Pg 22

STA 1st H&R 2nd H&R 3rd A+D 4th H&R

H&R

FS 39 282-54-34 102-54-23 282-54-35 102-54-26

BS 37 30-00-23 180-00-17 00-00-32 180-00-20

T@ 38 282-54-11 282-54-06 282-54-03 282-54-06

282-54-07 ✓

Dist. 38-39 89-51-20 270-08-23 89-51-29 567.82 567.82

Dist. 90-11-04 269-48-35 90-11-15 567.80 567.80

FS 40 206-17-50 26-17-38 206-17-46 26-17-39

BS 38 20-00-30 180-00-15 00-00-21 180-00-11

T@ 39 206-17-20 206-17-23 206-17-25 206-17-28

206-17-24 ✓

Dist. 90-11-47 269-48-03 90-11-52 1076.73 1076.72

Dist. 89-50-10 270-09-40 89-50-15 1076.71 1076.71

CKBA 3-27-85

3-26-85

5" J. PINE

*

24.63

12" ASPEN

44.60

E

567.81 ✓

6" B. Birch

17.42

E

18.58

E

5" MAPLE

1076.715 ✓

24

T144N R25W Sec 17 Sub

Cont. From Pg 23

STA 1st H&D 2nd H&R 3rd H&D 4th H&R

H&R

FS 41 219-27-50 39-27-38 219-27-46 39-27-36

BS 39 00-00-18 180-00-00 00-00-16 180-00-03

π@ 40 219-27-32 219-27-38 219-27-30 219-27-33

219-27-33 ✓

Dist. 40-41 89-56-38 270-03-05 89-56-47 1045.33 1045.33

Dist. 41-46 90-05-13 269-54-30 90-05-22 1045.31 1045.31

FS 42 160-46-20 340-46-10 160-46-18 340-46-09

BS 39 00-00-23 180-00-07 00-00-17 180-00-07

π@ 41 160-45-57 160-46-03 160-46-01 160-46-02

160-46-01 ✓

Dist. 41-42 90-43-20 269-16-20 90-43-30 231.16 231.14

Dist. 42-41 89-23-46 270-35-58 89-23-54 231.13 231.12

CK BA 3-27-85

24

3-26-85

9" ASPEN

60

47.52'

7" ASPEN

60

58.95'

1045.32

STA 41 = 60d spike
No ties

231.13 ✓

25

T144N. R25W Sec 17 Sub

Traverse Cont'd from pg 24

STA 1st H&D 2nd HAR 3rd H&D 4th HAR

HX

FS 43 271-49-20¹⁹ 91-49-17¹⁶ 271-49-11¹⁸ 91-49-06^{9 15}BS 41 00-00-18¹⁰ 180-00-03⁰³ 00-00-12¹⁸⁰⁻⁰⁰⁻⁰⁰ ~~77-59-58~~T@ 42 271-49-02⁰⁹ 271-49-04[✓] 271-48-59⁴⁹⁻⁰⁶ 271-49-15[✓]

271-49-11 ✓

Chained

42-43

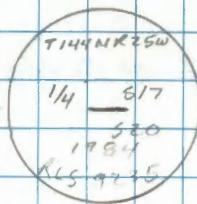
59.14 ft

3/26/85

25

STA 42 = target # 89

STA 43 =



26 T144N R25W Sec 17 Sub

Checking angles from targets
to NE Sec Cor of Sec 17

STA 1st H&D 2nd H&R 3rd H&D 4th H&R

H &

FS 28 BA-34-07 26433-54 BA-34-05 264-33-52

BS T#55 00-00-13 180-00-00 00-00-10 180-00-00

TO T#56 BA-33-54 84-33-54 BA-33-55 BA-33-52

84-33-54

Dist T# - T# 90-52-21 269-07-42 90-52-20 216.60 216.57

Dist T# - 28 89-52-57 270-06-09 89-53-04 226.91 226.91

CK BA 3-28-85

March 28, 1985 26

Temp = 38°F

PC # G. Kosenko

BPR = 29.3 @ 8:30 AM

TT G. Robertson

ELF = 0

B. Ausk

T-2 SIN 265184

Red 1A SIN 4863

27 T 144N R 25W Sec 17 Sub
 SPUR traverse from sta 38 to
 E 1/4 of Sec 17
 STA 1st H&D 2nd H&D 3rd H&D 4th H&D
 H&D

FS 44 200-37-34 20-37-23 200-37-32 20-37-20
 BS 37 77-06-13 257-06-07 77-06-18 257-06-07
 TO 38 123-31-21 123-31-16 123-31-14 123-31-13
 123-31-16

FS 44 200-37-34 20-37-23 200-37-32 20-37-20
 BS 39 00-00-24 180-00-06 00-00-25 180-00-10
 TO 38 200-37-10 200-37-17 200-37-07 200-37-10
 200-37-11

Dist 39-44 90-41-52 ¹⁸⁻⁰⁰ ~~269-23-36~~ 90-41-56 665.82 665.77
 Dist 44-38 89-21-22 270-38-25 89-21-28 665.82 665.78

✓ OK Ch 3/28/85

27
 March 28, 1985

STA 38 = 60d spike

665.77

T144N R25W SCL 17

Traverse cont'd from pg 27

STA 1st H&D 2nd H&R 3rd H&D 4th H&R
H&D

FS 45 141-39-13⁶ 321-38-58 141-39-10 321-38-55

BS 38 00-00-28 180-00-16 00-00-28 180-00-14

IT@ 44 141-38-45 141-38-42 141-38-42 141-38-41
141-38-43

Dist 44-45 90-04-30 269-55-21 90-04-35 611.48 611.48

Dist 45-44 89-59-01 270-00-55 89-59-03 611.50 611.50

FS 46 136-35-40 316-35-30 136-35-38 316-35-20

BS 44 00-00-25 180-00-08 00-00-20 180-00-07

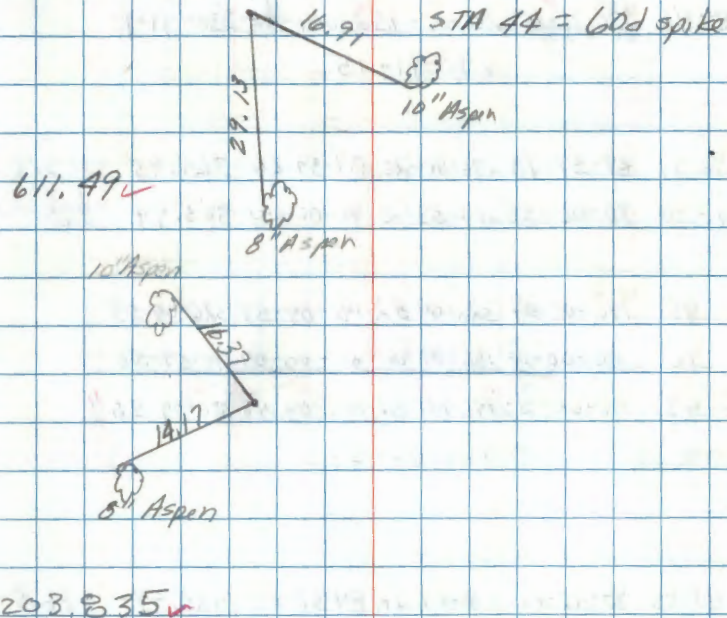
IT@ 45 136-35-15 136-35-22 136-35-18 136-35-13
136-35-17

Dist 45-46 89-19-24 270-40-30 89-19-27 203.85 203.84

Dist 46-45 90-51-11 269-08-34 90-51-19 203.85 203.83

CK BA 3-28-85

March 28, 1935



29

T144N R25W Sec 17 Sub

Traverse Cont'd from pg 28

STA 1stHAD 2ndHAR 3rdHAD 4thHAR
HA

FS 47 230-11-25 50-11-10 230-11-18 50-11-12

BS 45 00-00-10 179-59-55 00-00-07 179-59-54

⊕ 46 230-11-15 230-11-15 230-11-15 230-11-18

230-11-15 ✓

Dist 46-47 89-59-18 270-00-26 89-59-26 365.45 365.45

Dist 47-46 90-06-38 269-53-10 90-06-44 365.44 365.44

FS 48 146-05-04 326-04-52 146-04-57 326-04-53

BS 46 00-00-16 180-00-00 00-00-09 179-59-58

⊕ 47 146-04-58 146-04-52 146-04-48 326-04-55

146-04-51 ✓

Dist 47-48 89-52-28 270-07-22 89-52-33 426.59 426.59

Dist 48-47 90-12-40 269-47-08 90-12-46 426.58 426.58

CK BA 3-28-85

3/28/85

29

T144N R25W
1/4
S17 | S16
1984
RLS 9235

STA 46:

365.445 ✓

Target # 71

STA 47 = ~~head nail~~

Target # 70 is gone

426.585 ✓

T144 N R25W Sec 17 Sub

Traverse Cont'd from pg 29

STA 1st H&D 2nd H&R 3rd H&D 4th H&R
H&A

FS 49 219-50-17 39-50-00 219-50-12 39-50-01

BS 47 00-00-15 180-00-00 00-00-13 180-00-02

⊕ 48 219-50-02 219-50-00 219-49-59 219-49-59
219-50-00 ✓

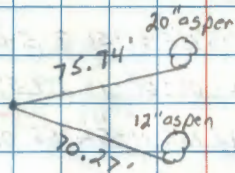
0.5^x 48-49 89-55-51 270-04-06 89-55-53 531.45 531.450.5^x 49-48 90-08-13 269-51-34 90-08-20 531.44 531.44FS 50 156-07-54 336-07-44³⁸ 156-07-45 336-07-35BS 48 00-00-13 179-59-51⁵² 00-00-06 179-59-53

⊕ 49 156-07-41 156-07-50⁴⁶ 156-07-39 156-07-42
156-07-42 ✓

0.5^x 49-50 89-11-30 270-48-16 89-11-37 333.04 333.040.5^x 50-49 90-55-01 269-04-44 90-55-08 333.03 332.99

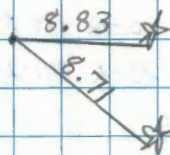
CK BA 3-28-85

3/28/85



STA 48 = 16d nail

531.445 ✓



STA 49 = 16d nail

333.00 ✓

Traverse Cont'd from pg 30

STA 1st H&D 2nd H&R 3rd H&D 4th H&R
H&R

FS 51 155-01-~~46~~⁵⁴ 335-01-43 155-01-56 335-01-~~42~~⁵⁰

BS 49 00-00-~~47~~⁰⁹ 180-00-01 00-00-14 179-59-59

X @ 50 155-01-~~39~~⁴⁵ 155-01-42 155-01-~~42~~⁴² 155-01-43

155-01-43 ✓

Dist 50-51 89-54-43 270-05-04 89-54-50 580.56 580.56

Dist 51-50 90-08-48 269-50-50 90-08-59 580.54 580.54

FS #1 241-23-19 61-23-~~09~~¹² 241-23-22 61-23-09

BS 50 00-00-10 179-59-~~48~~⁵⁷ 00-00-12 179-59-54

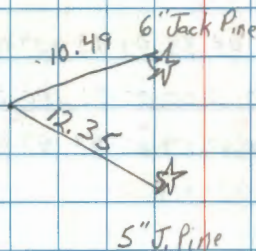
X @ 51 241-23-~~09~~¹⁵ 241-23-~~21~~¹⁵ 241-23-10 241-23-15

241-23-12 ✓

Dist 51- 91-03-18 268-56-28 91-03-25 612.80 612.70

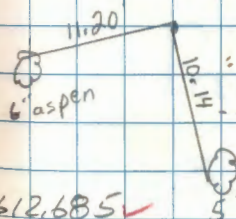
Dist -51 89-00-10 270-59-35 89-00-18 612.76 612.~~68~~⁶⁷

CK BA 3-28-85



STA 50 = 60d spike

580.55 ✓



STA 51 = 60d spike

612.685 ✓

T144N R25W Sec 17 Sub

Traverse Cont'd from A9 31

STA 1st H&D 2nd H&R 3rd H&D 4th H&R

H&R

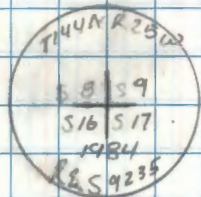
FS 29 59-01-10 299-01-02 59-01-13 239-01-00

BS 51 00-00-32 180-00-20 00-00-31 180-00-16

T @ 28 59-00-38 59-00-42 59-00-42 59-00-44

59-00-42 ✓

END OF THIS TRAVERSE



This monument is stamped wrong. It should be re-stamped

Pages

33 thru 59

Blank

T144N R25W Sec 9 Sub

Inverse & Monumentation info to set

Sta 1301, E 1/16, 9-16

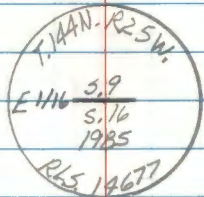
STA 1st H&D 2nd H&R(H)
H. Dist

H&

FS 1301 23-49-53 203-50-00

BS 12 00-00-00 180-00-20

TO 13 23-49-53 23-49-40 2.84



Set a 5 foot long by 5/8 inch diameter
aluminum rod with a 3/4 inch diameter
aluminum cap, stamped as shown, up 1.5 feet
from which:

Ash 6.3 in, N86°E, 9.44 ft to 16d nail

Tamarac 12.2 in, S51°E, 75.31 ft to 16d nail

Ash 6.8 in, S50°W, 37.29 ft to 16d nail

Metal fence post, north, 3.0 ft, w/54-2

Metal fence post, east, 3.0 ft, w/54-2, 54-9

May 16, 1985

Cloudy, windy

T600 SIN 158930 PC 10 T B. Kosenko

B. Ask

G. Robertson

R. Feltus

This corner was set at
proportionate measure between
the south 1/4 of Sec 9 and
the SE corner of section 9

Blw P. Kosenko
5/16/85

Cord filed

in E. face, double blaze scr "E 1/16 S9B1" w/60d spike
in SW face, double blaze scr "E 1/16 S16B1" w/60d spike
in SE face, double blaze scr "E 1/16 S16B1" w/60d spike

61 T144N R25W Sec 9 Sub

Inverse and Monumentation info

to set sta 1001, SE 1/16 S. 9

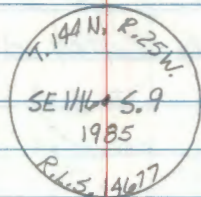
STA 1st H&D 2nd H&R H. Dist
H&

FS 1001 101-35-45 281-37-00

BS 9 00-00-00 180-01-10

T10 10 101-35-49 101-35-50 2.68

5° Decl.



Set a 15' foot long by 5/8 inch diameter
aluminum rod with an 3/4 inch diameter
aluminum cap stamped as shown,

up 1.5 ft. from whk:

Cedar 7.2" N08°E 42.58ft to a 16d nail on

Tamarack 8.1" S23°E 57.63ft to a 16d nail on

Cedar 6.0" N21°W 36.38ft to a 16d nail on

Metal fence post south 3.0ft w/54-2

Metal fence post west 30ft w/54-2 & 54-9

All trees Painted with Rings

May 16, 1985

Cloudy, drizzle, windy

T 600 S/N 158830 PC 20 T.G. Kosenko

B. Husk

G. Robertson

R. Feltus

This corner was set at the
intersection of straight lines
connecting opposite 1/16 corners
around the SE 1/4 of S. 9

John P. Kosenko
5/16/85

Card filed

SE FACE Double BLAZE SCR. "SE 1/16 S9B1" w/60d spike

SW FACE Double BLAZE SCR. "SE 1/16 S9B1" w/60d spike

SW FACE Double BLAZE SCR. "SE 1/16 S9B1" w/60d spike

T144N R25W Sec 9 Sub

Inverse and Monumentation info to

set sta 0801, GS, 1/16 S9

STA 1st H&D 2nd H&R H-Dist

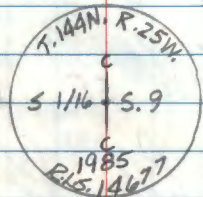
HA

FS 0801 17-18-43 197-18-40

BS 7 00-00-00 180-00-00

T@B 17-18-43 17-18-40 2.09

Decl = 5° East



Set a 5 ft long by 2 1/2 inch outside diameter galvanized iron pipe with a 3 inch diameter domed brass cap stamped as shown, up 1.5 feet, from which:

From which:

Red Maple, 5.9 in NB7°E, 33.15 ft to a 16d nail

B. Spruce, 12.0 in, S47°W, 36.34 ft. to a 16d nail

Red Maple, 4.0 in, N18°W, 50.00 ft to a 16d nail

Metal fence post, north, 3.0 ft w/54-2, 54-9

Metal fence post, east, 3.0 ft w/54-2

May 9, 1985

Clear, breeze, warm

PC # G. Kasenko

T60D SPW 158830

T D. Ojamen

G. Robertson

This corner was set proportionately between the c/4 and the S 1/4 of sec 9.

John P. Kasenko

Card filed

in south face, double blaze, scr "S1/16 S9 BT" w/60d spike
 in NW face, double blaze, scr "S1/16 S9 BT" w/lead spike
 in SW face, double blaze, scr "S1/16 S9 BT" w/lead spike

63

T144N R25W Sec 9 Sub

E-10

Inverse and Monumentation info

to set sta 2301, w/1/16 4-9
 STA 1st H&D 2nd H&R H. Dist
 H&R

RS 2301 119-12-14 299-11-40

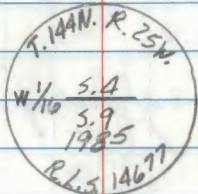
BS 22 00-00-14 179-59-59

T@ 23 119-12-00 119-11-41 1.29

119-11-51

5° Decl.

UP 15 ft



Set a 2 1/2" OD by 5' long GALVANIZED IRON
 Pipe filled with concrete with a 3"
 BRASS CAP STAMPED AS SHOWN
 from which:

W. OAK 10.2" , N62°E, 17.63' to a 16d nail on
 Cedar 8.6" , S37°W, 65.30' to a 16d nail on
 Ash 6.5" , N38°W, 26.21' to a 16d nail on
 All Bts PAINTED RED

Metal fence post, East, 3.0 ft w/54-2

Metal fence post, South, 3.0 ft w/54-2 & 54-9

May 2, 1985

Clear, calm,

PC # G. Kosenko

B. Ansk

G. Robertson

Card filed

FACE Double Blazed SER. "W 1/16 S4BT" w/60d
 FACE Double Blazed SER. "W 1/16 S9BT" w/60d
 FACE Double Blazed SER. "W 1/16 S4BT" w/60d

OK AUG. 29 1985

Kenneth L. White

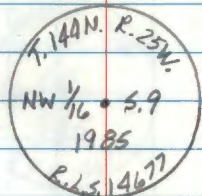
64 T144N R25W Sec 9 Sub

Inverse and Monumentation info to
set 2001, NW 1/16 Sec 9
STA 1st H&D 2nd H&R H. Dist^(F)
H&

Brng + Dist N 37-56-32 W 0.75.
20-2001

This cornerst by silver compass and
a steel tape.

Decl = 5° East
Up 1.5 ft



Set a 2 1/2" OD by 5' long GALVANIZED IRON
Pipe filled with concrete with a 3"
BRASS cap stamped AS shown from
which =

Jack Pine 7.5" S 11° E, 19.99 to a 16d nail on
Jack Pine 9.3" S 37° W, 68.88 to a 16d nail on
Red Pine 24.1" N 08° W, 18.16' to a 16d nail on
Metal fence post, north, 3.0 ft w/54-2
Metal fence post, West, 3.0 ft w/54-2 w/59-9
All Bts painted Red

May 2, 1985
Clear, calm
PC by G. Kasenko
B. Husk
G. Robertson

cord filed

FACE Double Blazed Scr. " NW 1/16 S 9 B 1" w/60d
FACE Double Blazed Scr. " NW 1/16 S 9 B 1" w/60d
FACE Double Blazed Scr. " NW 1/16 S 9 B 1" w/60d

OK AUG. 29 1985

Kenneth I. White

T144N R25W Sec 9 Sub

Inverse and Monumentation info to set

Sta 1801, N. 1116 8+9

Sta 1545.0 2nd HAR

(E)
H. Dist

Hx

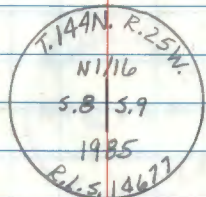
Brg + Dist
18-1801

N86-16-07 W

0.46

This corner set by Silva compass and steel tape

Ded = 5° East



Set a 5 foot long by 2 1/2 inch outside diameter concrete filled galvanized iron pipe with a 3 inch diameter brass cap stamped as shown above, 18 inches above ground from which:

Red Pine, 17.0 in, N43°E, 66.14 ft to a 16d nail

Jack Pine 11.0 in, S32°E, 31.45 ft to a 16d nail

Jack Pine 8.2 in, N06°W, 19.79 ft to a 16d nail

Metal fence post, east, 3.0 ft w/54-2

Metal fence post, south, 3.0 ft w/54-2, 54-9

E.L.S. 14677

May 2, 1985
Clear, breeze
PR, RA G. Kosenko
B. Ausk
G. Robertson

This corner set at proportionate measure between the W 1/4 of section 9 and the NW corner of section 9.

G. Kosenko
5/2/85

card filed

in NW face, double blaze, scr "N1116 59 BT" w/60d spike
in SW face, double blaze scr "N1116 59 BT" w/60d spike
in SW face, double blaze, scr "N1116 58 BT" w/60d spike

OK AUG. 29 1985

Kenneth L. White

66

T144N R25W Sec 9 Sub

Inverse and Monumentation info to

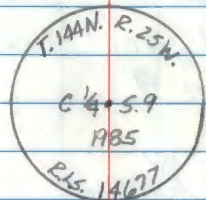
set C¹/₄, STA 0601, sec 9STA 1st H&D 2nd H&R H. Dist.

H&R

FS 0601 91-15-55 271-16-45

BS 5 00-00-00 100-00-15

T@ 6 91-15-55 91-16-30 1.96



Set a 5 ft. long by 2 1/2" O.D. concrete filled
galvanized iron pipe with a 3" dia. brass
cap stamped as shown: Up 1.5'

From which:

J. Pine, 12.9", N34°E, 16.37' to a 16d nail

J. Pine, 16.2", S41°W, 31.41' to a 16d nail

N. Pine, 15.9", N43°W, 47.73' to a 16d nail

Metal fence post West, 3.0' w/54-2

Metal fence post South, 3.0' w/54-2 & 54-9

All trees painted red with red ring

All trees have God spike in base blaze

May 9, 1985

G. Kasenko

D. Ojanen

G. Robertson

card filed

on the NE face, double blazed scribed "C¹/₄ S9 BT"
on the E face, double blazed scribed "C¹/₄ S9 BT"
on the S face, double blazed scribed "C¹/₄ S9 BT"

67

Angles at Property Corners
to Property line T144N R25W Sec 17

STA 15+40 200 H&R

H &

FS 28 271-16-31 91-16-18

BS 31 00-00-15 180-00-40

T@ 3101 271-16-16 271-15-38

271-15-57 ✓

Sec 9

FS 1 00-39-27 180-39-00

BS 5 00-00-00 180-00-00

T@ 0601 00-39-27 00-39-00

FS 1001 89-10-29 269-11-00

BS 7 00-00-00 180-00-10

T@ 0801 89-10-29 89-10-30

FS 3101 252-34-49 145-09-20

BS 36 00-00-00 252-34-49

T@ 3601 252-34-49 252-34-31

✓ OK Pr. 4/17/85

April 11, 1985

T-2 S/N 265184

PC, PT G. Kosenko

B. Ausk

G. Robertson

May 13, 1985

PC, PT G. Kosenko

Ack G. Robertson

T60D S/N 158830

T144N R25W Sec 17 Sub

Inverse and Monumentation info to set

STA 3101, E 1/16, $\frac{B}{17}$ STA 1st HAR D 2nd HAR H. Dist

H4

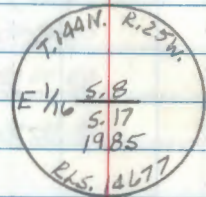
FS 3101 271-11-03 91-10-07

BS 30 00-00-15 179-59-49

H4 31 271-10-48 ~~271~~-10-18 56.60

271-10-33

Decl 5° E



Set a 5 ft long by 2 1/2 in. O.D. concrete filled
 galvanized iron pipe with a 3 in. dia.
 brass cap stamped as shown. Up 1.5 ft.

From which:

W. Oak, 7.1" S 74° W, 78.79 ft to a 1/6 d nail in

Sugar Maple, 4.9" N 53° W, 82.01 ft to a 1/6 d nail in

BT's painted red w/red ring + 60 d spike

Sign post, East, 3.0' w/54-2 + 54-9

Sign post, South, 3.0' w/54-2

✓ OK P.L.S. 4/17/85

April 11, 1985

T-2 S/N 265184

P.C.T. on B. Kosenko

B. Ausk

G. Robertson

Set Corner

May 17, 1985

G. Robertson

B. Ausk

R. Feltus

Cord filed

the NE face, double blazed scribed "E 1/16 S 17 BT"

the NW face, double blazed scribed "E 1/16 S 8 BT"

T144N R25W Sec 17 Sub.

Angles to set Property CORNERS

STA 1st H&D 2nd H&R

A. Dist

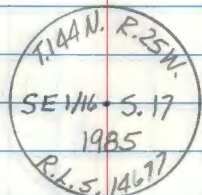
SE 1/16 Sec 17

FS 3601 289-52-09 219-44-00

BS 35 00-00-00 289-52-10

T @ 36 289-52-09 289-51-50

176.76



On May 23, 1985 we set a 3 foot long by 2 1/2 inch outside diameter concrete filled galvanized iron pipe with a 3 inch diameter brass cap stamped as shown, 1.0 feet under old road surface from which:

B of G, 10.0 in, N24°E 45.75' to a 16d nail in Ash,
 73 in, N52°W, 51.68' to a 16d nail in Ash,
 10 in, S55°E 29.37' to a 16d nail in BT's painted red w/red ring + 60d spike

B. Ausk

G. Robertson

Lietz T60D

Made Bearing Trees:

Monument was not

set at this time

5/17/85

G. Robertson

B. Ausk

Aid - R. Feltus

35.87 5" Brasswood

26.92

4" Brasswood

the NW face, double blazed scribed "SE 1/16 S 17 BT"
 the SW face, double blazed scribed "SE 1/16 S 17 BT"
 the SW face, double blazed scribed "SE 1/16 S 17 BT"

CARD filled

Remainder of
Book —

Blank
Pages