

T143N R31W
BOOK 1

T143N R31W

Book # 1

FIELD BOOK

82 0012

USFS, CASS COUNTY, MN

T143N R31W

6	5	4	3	2	1
				70	71
7	8	9	10	11 69 68 65 12 64 72 67 66 62	163 64 52
18	17	16	15	14 45 46 47 48 49 50 51 52 44 3 42 41 60 61 53	54 55
				14 38 37 36 56 57 31 30 29 28 26 27	
19	20	21	22	35 32 73 25 34 23 33 74 76 24 77	23
				75 23 11 10 12 13 14 17 18 19	
30	29	28	27	98 7 26 36 15 24 16 5	20 22 23
31	32	33	34	35	36

1 T-19

Center Quarter Cor. Sec. 26
Notes of GHO Resurvey 1919

Set iron post 1" dia. x 36" long
with brass cap marked C¹/₄ S26

No iron fd. falls in junk pile - iron
found by district personel in 1967 they placed iron
beside aspen close to it's correct location - may

From which find in spring after snow is gone

Red Oak 12 N80E 170 lks. = 112.2

No evidence could be found 12" R. Oak is 110 same

N. Pine 20 S78W 190 lks. = 125.4

Now 25" N. Pine S78W 123.85 with scribe C¹/₄ S26 BT
w/1510 - landowner considers this tree to be a hazard and may remove ^{visible}

To perpetuate this corner I set a 2" dia. x 5' long
galvanized steel pipe, filled with concrete
and capped with 3" dia. brass tablet marked

T143N R31W

C¹/₄ S26

Witnessed by 1976

^{Twin} W. Oak 8 S82W 40.30' mkd C¹/₄ S26 BT

W. Oak 5 S32W 52.80' mkd X BT

W. Oak 9 N56E 88.1' mkd C¹/₄ S26 BT

Set 8' steel post due east 1.8' w/ F.S. signs 54-2 1/4

Set 8' steel post due west 2.4' w/ F.S. signs 54-2 3/4

8-10-76 Curtis R. Krause

Chained north from iron at SW corner of
cemetery 330' and pull distance from
N. Pine BT - set aspen hub 2" dia. x 18" long
at approx. location of C¹/₄ corner
a rock is in correct position frozen down
will monument in spring.

Put FSLP on 6" Aspen S3°W 5.5'
Corner is approx. 170' south of Squaw Pt. Rd.
An old trail runs SE to old Squaw Pt. school
site - between G¹/₄ corner and Pine BT
evidence of graves was seen along trail
in area of SW corner of cemetery

2-6-76

Curtis R. Krause

8-10-76

Searched for iron in pile of cans and junk
found top of iron broken off - but base 28" was
in place - we dug down to base of iron and
found flanges to be in place and has not
been moved or pulled out at any time
search area for top 8" with brass cap - but it
couldn't be found - Replaced with F.S. mark.

Curtis R. Krause

19-5680-11 by Rod's 1967

2 T, 4-19

SW corner of Cemetery in Sec. 26
this corner is 5 chs. or 330' south of
C/4 of Sec. 26

Notes of GHO Resurvey 1919

Set iron post 1" dia. x 36" long
with brass cap marked S26

CEM

AP3

AP4

SPSR

Fd. iron in place - in good condition
6" above ground - graves just to

east of iron and between cor. and road
No BT's.

To perpetuate this corner I scribe 3
bearing trees as follows.

W. Oak 8" S18E 62.85' mkd. CEM AP4 S26 BT
8/9/12 Now 12" @ bearing & dist.

Red Oak 12" S51E 22.0' mkd. CEM AP4 S26 BT
8/9/12 Rotted stump hole @ bearing & dist.

N. Pine 25" S32W 17.9' mkd. BT
8/9/12 Now 26" @ bearing & dist.

Set 8' steel sign post due East 3.4' with FS. signs
54-2-54-4 gone

2-9-76

Clinton R. Klauer

89-5680-11 by Rodis in 1967

Placed FSLP on N. Pine BT.

Corner can be seen from old trail
running SE

8/9/12 Hayes

Fd. brass cap up 8". Fd. BT's as noted.
Fd. 8' steel sign posts @ South 3.4' & North 4.1'

37-19, 20

NE Corner of Cemetery in Sec. 26

this corner is 10.03 chs. = 662' S88°48'E
of Center 1/4 to Sec. 26

Notes of GHO Resurvey 1919

Set iron post 1" dia. x 36" long
with brass cap marked

Found iron $\frac{1}{2}$ cap in place
in good condition - 8" above ground

old mostly down wire fence runs west 1919

No BT's. from this corner

To perpetuate this corner I scribed 3
bearing trees as follows

Red Oak 10" S68E 32.6' mkd. CEM AP2 S26 BT

8/9/12 Now 13 @ bearing & dist. scribe over ground

W. Oak 5" N86E 27.35 mkd. X BT

8/9/12 Not found

W. Oak 6" N18W 32.30' mkd. AP S26 BT

8/9/12 Now 9" @ bearing & dist. scribe over ground

Set 8' steel sign post due west 2.2' with F.S.

signs 54-2 & 4 8/9/12 Fd. in place

2-9-76 Anita R. Hanson

Put FSLP on 10" Maple S18E 13.0' from
iron post 8/9/12 Fd

Corner is approx. 500' south of Squaw
Point Road ~~SE~~

blazed 5" maple along south side of road
corner is south

8/9/12 Hayes

Fd. Brass Cap up 8" with BT's as shown

4 T, 4-19, 20

SE Corner of Cemetery in Sec. 26
this corner is 5 chs. or 330' south of corner
on page 3 this book

Notes of GLO Resurvey 1919

	S26	
Set iron post 1" dia. x 36" long	CEM	
with brass cap marked	AP4	AP3
Fd. iron cap in place 6" above grd.	SPSR	
in good condition	1919	

No BT's.

To perpetuate this corner I scribed 3
bearing trees as follows

N. Pine 16 S65W 38.4' mkd. CEM AP3 S26 BT

8/9/12 Now 20" @ bearing & dist scribe visible

N. Pine 12 S19W 21.75' mkd. CEM AP3 S26 BT

8/9/12 Now 16" @ bearing & dist scribe visible

W. Oak 12 N55E 50.7' mkd. CEM AP3 S26 BT

8/9/12 Now 21" @ bearing & dist - scribe overgrown

Set 8' steel sign post due North 3.9' with F.S.

signs 54-2 54-4 8/9/12 Fd bent over

2-9-76

Curtis R. Krause

Put FSLP on 9" Red Oak S20W 7.5' from
iron post Fd. decayed on ground 8/9/12

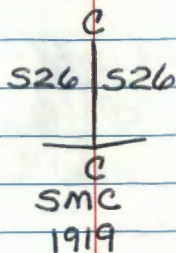
8/9/12 Hayes

Fd Brass Cap 8" above ground & BT's as
noted.

5 SMC on N-S Center line of Sec. 26

Notes of GLO Resurvey 1919

Set iron post 1" dia. x 36" long
with brass cap marked



From which

W. Oak 18 N29W 491 lks. = 324.1'

No other available

SMC is true south of C¹/₄ Sec. 26 - 1547.0'

T-20
6 Center East $\frac{1}{16}$ of Sec. 26
Notes of GLO Resurvey 1919

Set iron post 1" dia. x 36" long
with brass cap marked C $\frac{E \frac{1}{16}}{S26}$ C
Found iron $\frac{1}{2}$ cap - in place
in good condition - 6" above ground
1919

From which

Red Oak 12 S43 $\frac{1}{2}$ W 441ks = 29.0'

Now 22" RED OAK AT BRG. & DIST. SCRIBE OVERGROWN

Red Oak 8 N62W 271ks. = 17.8'

Now 13" RED OAK AT BRG. & DIST. SCRIBE OVERGROWN

TO PERPETUATE THIS CORNER WE SCRIBED "3"

NEW BEARING TREES AS FOLLOWS:

W. OAK 7" N81°E 41.65' MKD: CE $\frac{1}{16}$ S26 BT

W. OAK 8" S19°E 24.45' MKD: CE $\frac{1}{16}$ S26 BT

R. OAK 10" N15°W 11.55' MKD: CE $\frac{1}{16}$ S26 BT

SET 8' STEEL SIGN POST DUE SOUTH 4.1' W/F.S.

SIGN 54-4.

8/26/76

Jerry B. Johnson

Put FSLP on 12" Red Oak south side Squawped
corner 13.515' south of tag

PUT FSLP ON 10" RED OAK WEST SIDE.
CORNER IS S58°W APPROX. 5'

7 T-18
Center West 1/16 of Sec. 26
Notes of GLO Resurvey 1919

Set iron post 1" dia. x 36" long
with brass cap marked $C \frac{W \frac{1}{16} C}{S26}$
Found iron cap - in place.
in good condition 8" above ground 1919

From which

Red Oak 7 N84 1/2 E 1021ks. = 67.3'

Now A ROTTED STUMP AT BRG. $\frac{1}{3}$ DIST.

Red Oak 8 S42 W 401ks. = 26.4'

Now A 15" R. OAK AT BRG $\frac{1}{3}$ DIST. - SCRIBE OVERGROWN

TO PERPETUATE THIS CORNER WE SCRIBED 2

NEW BEARING TREES AS FOLLOWS

W. OAK 7" S10° E 19.43' MKD. CN 1/16 S26 BT

R. OAK 9" N56° E 22.93' MKD. CN 1/16 S26 BT

SET STEEL SIGN POST DUE NORTH 3.5" W/FS SIGNS 54-2 3/4

SET STEEL SIGN POST DUE EAST 4.7" W/FS SIGN 54-2 3/4

8-20-76

Randy Morton

Low Fowler

R9-5680-11 by Roofis 1967

12/11/96 GB, JS, CG

Fd. no evidence of GLO iron pipe. Fd.
a 4' high "T" Sign post marking the
corner position. Fd. both steel sign
posts that were set in 1976 in place.

Fd. R. Oak snag 14' high S42W at 26.4.

Fd. 8" W. OAK S10E at 19.43 Scribe closed.

Fd. 13" R. Oak N56E at 22.93 " " "

Mkd New BT: 6" W. Oak N72W 20.63

Scribed CN 1/16 S26 BT
New L.T.S. east and north from corner.

8 S-18
8 NORTH WEST 1/16 of Sec. 26
Notes of GLO Resurvey 1919

Set iron post 1" dia. x 36" long
with brass cap marked NW 1/16 S26
Found iron cap - in place - in good 1919
condition 8" above ground

From which

Red Oak 10 N25E 117ks. = 77.2' SCAR
VISIBLE

Now A 24" R. OAK AT BRG 1/3 DIST. - SCRIBE OVERGROWN

Red Oak 12 S39E 46ks. = 30.4'

Now A ROTTED STUMP AT BRG 1/3 DIST.

TO PERPETUATE THIS CORNER WE SCRIBED 3 NEW
BEARING TREES AS FOLLOWS

W. OAK 11 10" N44°E 28.40' MKD. NW 1/16 S26 BT

W. OAK 7 6" N81°W 63.32' MKD. NW 1/16 S26 BT

R. OAK 13 11" N12°W 53.72' MKD. NW 1/16 S26 BT

SET 8' STEEL SIGN POST DUE SOUTH 6.3' W/FS SIGNS 54-2 1/4

SET 8' STEEL SIGN POST DUE WEST 5.0' W/FS SIGNS 54-2 1/4

8-20-76

Randy Morton
Loren Crowder

WOODS TRAIL BEARS EAST 1/2 WEST APPROX. 40' SOUTH
OF MONUMENT

12/11/96 GB.

Found GLO iron cap in place.

Found all 3 Bt's marked in 1976 alive.

New diameters are in red pencil on left page.

Sign post set south 6.3 is bent.

Set new 8' steel sign post south 4.3
with both signs.

New L.T.S. south + west.

9 S-17, 18

SMC west of NW 1/4 in Sec. 26

Notes of GHO Resurvey 1919

Set iron post 1" dia. x 36" long

with brass cap marked $\frac{12/11/19}{SMC}$ N } S26 N

Found iron cap - in place

in good condition - 10" above ground 1919

at north edge of resort line E-W in open lawn

From which Corner is 35.5' N78W from last cabin

Red Oak 6 N52 1/2 E 54 lks. = 35.6'

Found large R. Oak stump at big dist.

Red Oak 7 S9 1/2 W 81 lks. = 53.5'

falls in open yard no stump remains

12/11/19 GB, CG, JS

Mkd. New BT'S:

7" W. OAK NIW 6.29' SMC S26 BT

4" W. OAK N25E 3.254 S26 BT ² places

5" W. OAK N66E 42.33 SMC S26 BT

Set 8' steel sign post 3.9' east, ^{Both} signs

New L.T.S. standard goes east

SMC is N88°33'W 983.4' from NW 1/4 Sec. 26

Corner is in yard of Oakdale Resort at
north west corner of yard

10' above water line and 20' east of shore
of Leech Lake - Steamboat bay

10 R-18

West 1/16 Bet. Sec's. 23-26

Notes of GHO Resurvey 1919

Set iron post 1" dia. x 36" long

with brass cap marked $w^{1/16}$ $\frac{S23}{S26}$

Found iron $\frac{1}{2}$ cap - in place $\frac{S26}{S26}$

in good condition 10" above 1919

ground - 290' east of Squaw point road

From which

Birch 5 N67 $\frac{1}{2}$ E 271ks. = 17.8'

Now 13 Birch leaning to corner - at ^{scribe rotted out} $\frac{1}{2}$ dist.

Poplar 4 S19 $\frac{1}{2}$ E 691ks. = 45.5'

Found log and stump well rotted at $\frac{1}{2}$ dist.

Put FSLP on 6" R. Oak on east side of
Squaw point road - from which corner is
east 290'

11 R-17, 18

MC Bet. Sec's. 23-26

Notes of GLO Resurvey 1919

Set iron post 1" dia. x 36" long

with brass cap marked

Found iron cap - in place

in good condition - 8" above ground

7' above water and 25' east of lake shore

From which pile rocks around iron

Red Oak 6 N26 $\frac{1}{2}$ E 871ks. 57.4'

falls in small old woods trail brg. N-S

Red Oak 6 S74 $\frac{1}{2}$ E 1751ks. = 115.5'

falls in open clearing of woods road N-S

To perpetuate this corner I scribed 3 new bearing trees as follows

W. Pine 10 N27W 23.70' mtd. SMC 523 BT

R. Oak 11 N77E 16.20' mtd. SMC 523 BT

W. Pine 23 S1E 82.80' mtd. SMC 526 BT

Set 8' steel post due west 2.3' $\frac{1}{2}$ ES. sign 54-4

8-23-76

Put FSLP on 8" W. Oak corner is S52 $\frac{1}{2}$ E

10.5' at edge of bank on top of slope

Found 4x4x6' Cedar post 1 $\frac{1}{2}$ chs. or 100'

east of corner with FSLP - on east side

of old woods trail running N-S

460' west of C. of Squaw point road

Put FSLP on 6" R. Oak from which SMC is

West 406' - on west side of Squaw point road

12

Quarter Corner Bet. Sec's. 23-26

Notes of GLO Resurvey 1919

Restored from original evidence

Pine stp. 24" S63W 501ks. = 33.0'

scribe marks obliterated

W. Pine stp. 8' high 24" dia. N18W 401ks = 26.4'

with trace of scribe visible

Found as a burnt and decayed pine stp.

Set iron post 1" dia. x 36" long

with brass cap marked

$$\frac{1}{4} \frac{S23}{S26}$$

5/15/91 - BRAMA

Fd. GLO iron pipe with brass 1919

cap set 6" above ground.

From which

Poplar 4 N37 $\frac{1}{4}$ W 401ks. = 26.4'

Fd. no evidence

Red Oak 14 S15W 1471ks. = 97.0'

Placed a F.S.L.P. on W. Oak 8" N W
at 32' from corner.5/15/91 Measured 1326 at N87W from E1/6.
Distance and line checked good.

13

East 1/16 Bet. Sec's. 23-26
Notes of GLO Resurvey 1919

Set iron post 1" dia. x 36" long
with brass cap marked

E 1/16 $\frac{S23}{S26}$

5/16/91 - BRAMA

Fd. GLO iron pipe with 1919
brass cap set 7" above ground.

From which

W. Oak 18 S84 $\frac{1}{4}$ W 1221ks = 80.5'

Fd. no evidence

W. Pine 30 N5 $\frac{1}{4}$ W 1501ks = 99.0'

Placed a F.S.L.P. on double trunk
9" W. Oak S36W at 10.5.

5/16/91 Measured from SE section corner of
23 N87W 1326'. Distance and line checked.
Corner falls approx 90' south of a E-W
Forest Road.

14 A-21

Section Corner to Sec's. 23-24-25-26

Notes of GLO Resurvey 1919

Restored from original evidence

N. Pine stp. 24 N31E 351ks. = 23.1'

scribe marks obliterated

W. Pine stp. 18 S59E 531ks. = 35.0'

scribe marks obliterated

W. Pine stp. 24 S70W 501ks. = 33.0'

scribe marks obliterated

W. Pine stp. 16 N45W 131ks. = 8.6'

scribe marks obliterated

Set iron post 2" dia. x 36" long T143NR31W
with brass cap marked 523 524

5/15/91 - BRAMA - Found GLO iron 526 525

pipe with brass cap set 5" above grd. 1919

From which

W. Oak 6 N85¹/₄E 1231ks. 81.2'

Fd a 16" W. OAK at N85E @ 81.2'

Red Oak 5 S39¹/₄E 461ks. = 30.4'

W. Pine 40 S89³/₄W 5641ks. = 372.2'

Fd. as a decayed & burnt stp and log

GLO BT

Red Oak 3 N55W 541ks. = 35.6'

Found By SAKFF IN 1967.

Placed a F.S.L.P on 6" W. Oak N82W at 59'
from corner. Tag is on the west side of
a N-S cross county trail.

Line was measured from S¹/₁₆ at S3W 1328'.
Line & distance checked good. Line was ribboned today.

15

Quarter Corner Bet. Sec's. 25-26
Notes of GLO Resurvey 1919

Set iron post 1" dia. x 36" long
with brass cap marked

$\frac{1}{4}$
S26 S25

1919

From which

Red Oak 12 N1 $\frac{1}{2}$ E 17.89chs. = 1180.7'

Red Oak 8 N6 $\frac{1}{2}$ W 15.59chs. = 1028.9'

16 MC Bet. Sec's. 25-26
Notes of GLO Resurvey 1919

Set iron post 1" dia. x 36" long
with brass cap marked

T143N	R31W
S26	S25
<hr/>	
MC	
1919	

No BT's.

Corner in open marsh

MC 15 True south of $\frac{1}{4}$ cor Bet. 25-26 534.6'

17 R-22

West 1/16 Bet. Sec's, 24-25

Notes of GLO Resurvey 1919

Set iron post 1" dia. X 36" long

with brass cap marked W 1/16 S24

Found iron ¹/₂ cap - in place

S25

in good condition above ground 1919

No BT's,

corner in open marsh

P191

18 R-23

Quarter Corner Bet. Sec's. 24-25

Notes of GLO Resurvey 1919

Restored from original evidence

Red Oak stp. — S65W 401ks. = 26.4'

scribe marks obliterated

W. Pine stp. — N15W 581ks. = 38.3'

scribe marks obliterated

Set iron post 1" dia. x 36" long

with brass cap marked $\frac{1}{4}$ $\frac{S24}{S25}$

Found iron cap in place

in good condition - 12" above ground 1919

Corner is approx. 120' west of woodstrail N-S

From which 2-6-76 CRK

N. Pine 14 N48 $\frac{1}{2}$ E 651ks. = 42.9'

Now 20 N. Pine N47°E 42.9' has scar-scribe ^{overgrown}

Birch 5 S72 $\frac{1}{2}$ W 251ks. = 16.5'

Found well rotted stp. and leg at brg. $\frac{1}{3}$ dist.

To perpetuate this corner I scribed 3 new bearing trees as follows.

W. Oak 7" N76W - 38.7' mtd. $\frac{1}{4}$ S24 BT

W. Oak 9" S51W - 50.85' mtd. $\frac{1}{4}$ S25 BT

W. Pine 13" S87E - 35.75' mtd. $\frac{1}{4}$ S25 BT

Set 8' steel post due west 2.6' with FS sign 54-4

7-27-76

Curtis R. Krause

19 R-24

East $\frac{1}{16}$ Bet. Sec's. 24-25

Notes of GLO Resurvey 1919

Set iron post 1" dia. X 36" long
with brass cap marked

E $\frac{1}{16}$ $\frac{S24}{S25}$

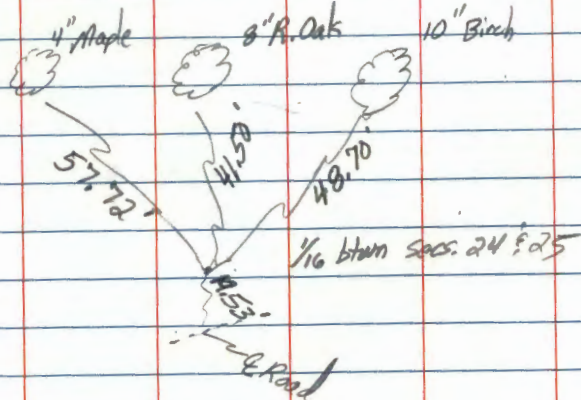
1919

From which

Birch 8 N79E 231ks. = 15.2'

Red Oak 6 S10 $\frac{1}{2}$ W 651ks. = 42.9'

5-10-84 Received ties from B.I.A. met



Believe this corner has been destroyed
by road construction

Will contact B.I.A. in Bemidji they
may have tied it in where they
surveyed Squaw pt. rd.

2-6-76

Curtis R. Kramer

20 S-23

Center North $1/16$ of Sec. 25
Notes of GLO Resurvey 1919

Set iron post 1" dia. X 36" long
with brass cap marked C
N $1/16$ S 25

Found iron and cap, in place - but top 10"
is bent at 90° to ground - try to
straighten iron and it broke off - replace 1919

From which GLO iron with FS corner
Red Oak 8 N $31\frac{1}{4}$ E 56 lks. = 37.0'

Now a 12" R. Oak at brq $\frac{1}{3}$ dist. scribe overgrown
N. Pine 12 S $18\frac{1}{2}$ W 22 lks. = 14.5'

Found N. Pine stp partly rotted with flat blaze
and scribe mark "T" visible at brq and 14.0' dist.

To perpetuate this corner I set a 2" dia. X 5' long
galvanized steel pipe, filled with concrete and
capped with a 3" dia. brass tablet marked

Set GLO iron at north edge T 143 N R 31 W
at 2" dia. iron pipe N $1/16$ S 25

1976

Witnessed by

N. Pine 10" N 38 E 34.35' mtd CN $1/16$ S 25 BT

W. Pine 10" N 86 E 43.7' mtd CN $1/16$ S 25 BT

W. Oak 7" S 32 E 16.40' mtd CN $1/16$ S 25 BT

Set 8' steel post due west 2.8' w/ FS signs 54-2 $\frac{3}{4}$

Set 8' steel post due south 3.4' w/ FS signs 54-2 $\frac{3}{4}$

7-28-76 Curtis R. Krause

15
Put FSLP on 6" W. Oak 390' west of corner
on east side of woods road N $\frac{1}{2}$ S
 $\frac{1}{2}$ of Squaw Point road 15' North of
corner - Put FSLP on

21

SMC on N-S Center line in Sec. 25
Notes of GLO Resurvey 1919

Set iron post 1" dia. x 36" long
with brass cap marked

C
S25 S25
/C
SMC
1919

From which

J. Pine 7 N46E 1291ks. = 85.1'

W. Ash 6 N2 $\frac{3}{4}$ W 4161ks. = 274.6'

SMC is true south of CN'116 in Sec. 25
1877.7'

22

SMC East of GN 116 in Sec. 25
Notes of GLO Resurvey 1919

Set iron post 1" dia. x 36" long
with brass cap marked

N	S25	/	N
	S25	/	SMC
	1919		

From which

Red Oak 6 N87½W 1391ks. = 91.7'

W. Oak 6 S89W 1591ks. = 104.9'

SMC is S88°20'E - 1221' from GN 116 Sec 25

23 9-23

Center South $\frac{1}{16}$ Sec. 24

Notes of G60 Resurvey 1919

Proportionate Measurement

Set iron post 1" Dia. x 36" long
with brass cap marked

Found iron $\frac{1}{2}$ cap in place

in good condition

6" above ground

C
S $\frac{1}{16}$ | S24
C
1919

No BT's.

To perpetuate this corner I scribed 3
new bearing trees as follows

W. Oak 9 S60E 15.65' mkd. CS $\frac{1}{16}$ S24 BT

W. Oak 9 N64W 32.50' mkd. CS $\frac{1}{16}$ S24 BT

W. Oak 8 S70W 20.85' mkd. CS $\frac{1}{16}$ S24 BT

Set 8' steel post due west 1.5' $\frac{1}{4}$ " FS sign 54-4

8-5-76

Curtis R. Kwanac

Corner is 280' west of N-S woods trail

ESLP on 13" Aspen - west side of road

24 P-23
Center Quarter Sec. 24

Notes of GLO Resurvey 1919

Proportionate Measurement

Set iron post 1" Dia. x 36" long
with brass cap marked

Found iron $\frac{3}{4}$ " cap - in place. C/4 524
in good condition 10" above ground 1919

From which

Poplar 12 N69E 281ks. = 18.5'

Now 18" Poplar snag at brq. $\frac{3}{4}$ " dist w/ scribe visible

R. Oak 8 S16W 151ks. = 9.9'

Found rotted stp. at brq. $\frac{3}{4}$ " dist.

To perpetuate this corner I scribed 3 new
bearing trees as follows

W. Oak 11 N63E 39.40' mkd. C/4 524 BT

R. Oak 6 S74E 21.20' mkd. C/4 524 BT

W. Oak 7 N74W 60.75' mkd. C/4 524 BT

Set 8' steel post due east 2.2' w/ FS sign 54-4

7-29-76 Curtis R. Kramer

Woods road brs. N $\frac{3}{4}$ S is approx. 110' west
of corner - Put FSLP on 12" W. Oak corner
is 90' east - on east side of road

25 0-23

Center North 1/16 Sec. 24

Notes of GLO Resurvey 1919

Proportionate Measurement

Set iron post 1" Dia. x 36" long

with brass cap marked

Found iron $\frac{3}{4}$ " cap - in place

in good condition - 10" above

ground

N 1/16 S 24

C

From which

W. Oak 9 N 25 E 37 1/2 ks. = 24.4'

Found oak windfall rotted at brg. $\frac{3}{4}$ " dist. ^{marks} has axe

W. Oak 14 S 52 1/2 W 43 1/2 ks. = 28.4'

Now 19" W. Oak at brg. $\frac{1}{2}$ " dist. scribe ^{Rescribed BT} overgrown

To perpetuate this corner I scribed 2 new bearing trees as follows

W. Oak 15 N 74 W 38.15' mkd CN 1/16 S 24 BT

W. Oak 10 N 20 E 23.0' mkd CN 1/16 S 24 BT

Set 8' steel post due east 2.9' W.F.S. sign 54-4

8-9-76 Ant Krause

200' east of woods road brg. N 1/2 S

Put FSLP on 13" Balsam N 70 E - 9.0'

Set 4" x 4" x 8' Cedar post at east edge of road - with FSLP

26 N-23

Quarter Corner Bet. Sec's. 13-24
Notes of GLO Resurvey 1919

Restored from Original evidence

J. Pine stp. 10" N1E 331ks. = 21.8' tree
Lying on ground mkd 1/4 513

J. Pine stp. 12 536W 161ks. = 10.6' tree
Lying on ground mkd. 1/4 524

Set iron post 1" Dia. x 36" long
with brass cap marked

Found iron $\frac{1}{2}$ " cap - in place

in good condition

above ground

1/4 513
1/4 524
1919

From which

J. Pine 12 S23 $\frac{1}{2}$ W 531ks. = 35.0'

J. Pine 14 N78E 551ks. = 36.3'

27 N-24
East 1/16 Bet. Sec's. 13-24

Notes of GLO Resurvey 1919
Proportionate Measurement

Set iron post 1" Dia. x 36" long
with brass cap marked

Found iron $\frac{3}{4}$ " cap - in place
in good condition

E 1/16 $\frac{S13}{S24}$

12" above ground

1919

From which

W. Oak 14 N6W 131ks. = 8.6'

Now 18" W. Oak at brg $\frac{3}{4}$ " dist. - scribe overgrown

Poplar 8 S19 $^{\circ}$ 30' E 131ks. = 8.6'

Now 15" Aspen windfall at brg $\frac{3}{4}$ " dist. - scribe overgrown

To perpetuate this corner I scribed 2 new Bearing
trees as follows

W. Oak 8 S42W 33.75' mkd. E 1/16 S24 BT

W. Pine 19 N75E 25.80' mkd E 1/16 S13 BT

Set 8' steel sign post due east 2.5' W/ES. sign 54-4

8-13-76

Clinton R. Krause

wood trail runs N $\frac{3}{4}$ S 8' west of corner

28 N-22

West 1/16 Bet. Sec's. 13-24

Notes of GLO Resurvey 1919

Proportionate Measurement

Set iron post 1" Dia. X 36" long

with brass cap marked

Found iron cap - in place

in good condition

12" above ground

W 1/16 $\frac{S13}{S24}$
1919

From which

Poplar 6 N32 $\frac{1}{4}$ E 371ks. = 24.4'

Now a depression in ground at bry $\frac{1}{2}$ dist.

Poplar 6 S66W 251ks. = 16.5'

To perpetuate this corner I scribed 3 new bearing trees as follows

W. Oak 6 N11W 29.45' mkd. W 1/16 S13 BT

W. Oak 5 N36E 24.60' mkd. X BT

W. Oak 7 S48E 45.00' mkd. W 1/16 S24 BT

Set 8' steel sign post due north 2.7' with F.S.

sign 54-4

8-11-76

Arthur R. Kraus

Put FSLP on 11" Aspen N14W - 10.5'

29 N-21

Corner to Sec's. 13-14-23-24
Notes of GLO Resurvey 1919

Restored from Original evidence

Found 2" Dia. galvanized iron pipe
12" above grd. marking corner Found

↑ Orig. BT's. 2" x 48" Cap at corner

N. Pine stp. 20 S43E 26 lks. = 17.2'

marks obliterated

No evidence remains - dirt has been pushed up in area ^{of stump}

N. Pine stp. 20 N2W 54 lks. = 35.6'

marks obliterated Found remains of large
pine stump - decayed and burned at brq. dist.

No trace of other two BT's.

Set iron post 2" Dia x 36" long

with brass cap marked T143N R31W

Set above pipe at north edge of
this corner monument

S14	S13
S23	S24

Found iron cap - in place - in good cond. 1919

From which 10" above ground

J. Pine 10 N82½E 186 lks. = 122.8'

Falls in sheared area - now pine plantation

J. Pine 10 S84½E 313 lks. = 206.6'

Falls in sheared area - now pine plantation

Poplar 5 S64W 96 lks. = 63.4'

Found large well rotted aspen stp. at brq. dist.

GLO BT

Poplar 5 N69W 39 lks. = 25.7'

Found large well rotted aspen stp. at brq. dist.

Corner is set in fence cor. Brs. E ½ S

No fence corner evidence found - except wire
grown into 9" W. Oak 5 east of corner

To perpetuate this corner I scribed 4 new
bearing trees as follows

W. Oak 9" N86°E 5.05' mtd T143N R31W S13 BT

W. Oak 10" S5W 12.50' mtd T143N R31W S23 BT

W. Oak 8" N24W 50.85' mtd T143N R31W S14 BT

W. Oak 7" N5E 50.70' mtd T143N R31W S13 BT

Set 4" x 4" x 8" Red top Cedar post due west 2.2' ¼ FS
signs 54-214

Set 8" steel sign post due north 1.9' ¼ FS sign 54-2

Corner is at westerly edge of pine plantation
woods road is 6' north of corner

8-9-76

Amelia R. Krause

woods trail NW-SE is approx. 400' west of
corner - set 4" x 4" x 8" Cedar post on east
edge of road - with FSLP

30 N-20

East 1/16 Bet. Sec's. 14-23

Notes of GLO Resurvey 1919

Proportionate Measurement

Set iron post 1" Dia. x 36" long

with brass cap marked

Found iron cap - in place

in good condition

above ground

E 1/16	514
	523
	1919

From which

Aspen 4 S82W 90 lks. = 59.4'

Aspen 5 N33W 34 lks. = 22.4'

31 N-19

Quarter Corner Bet. Sec's. 14-23
Notes of GLO Resurvey 1919

Restored from Original evidence

J. Pine stub N7E 581ks. = 38.3'

marks obliterated

J. Pine stp. S11E 451ks. = 29.7'

marks obliterated

Set iron post 1" Dia. X 36" long

with brass cap marked

Found iron $\frac{3}{4}$ " cap - in place $\frac{11}{4}$ $\frac{514}{523}$

above ground - in good condition 1919

From which

J. Pine 18 N19 $\frac{1}{4}$ E 3281ks. = 216.5'

J. Pine 16 S5W 731ks. = 48.2'

600' west of $\frac{1}{4}$ cor. to E Squaw Pt. Road

32 0-19

Center North $\frac{1}{16}$ Sec's. 23

Notes of GLO Resurvey 1919

Proportionate Measurement

Set iron post 1" Dia. x 36" long

with brass cap marked

C

N $\frac{1}{16}$ | 523

C

1919

From which

Aspen 4 S61 $\frac{1}{4}$ E 21 kts. = 13.9'

R. Oak 4 N70 $\frac{1}{4}$ E 8 kts. = 5.3'

Found By SARFF & MOLASH IN 1967.

33

Center Quarter Sec's. 23

Notes of GLO Resurvey 1919

Proportionate Measurement

Set iron post 1" Dia. X 36" long

with brass cap marked

C¹/₄ 523

1919

From which

N. Pine 14 N89E 110 kts. = 72.6'

N. Pine 16 N65¹/₂W 37 kts. = 24.4'

34

SMC on Center line. Sec. 23

East shore Steamboat bay

Notes of GLO Resurvey 1919

Set iron post 1" Dia. x 36" long
with brass cap marked
$$\begin{array}{r} \text{SMC } C \left\{ \begin{array}{l} 523 \\ 523 \\ 1919 \end{array} \right. C \end{array}$$

From which

W. Oak 14 N29 $\frac{3}{4}$ E 391ks. = 25.7'W. Oak 12 S56 $\frac{1}{2}$ E 1001ks. = 66.0'SMC is N88 $^{\circ}$ 48'W 2543.6' from C $\frac{1}{4}$

35

SMC on North 1/16 line Sec. 23
 East shore of Steamboat bay
 Notes of GLO Resurvey 1919

Set iron post 1" Dia. x 36" long
 with brass cap marked

SMC N | 523 - N
 523
 1919

From which

W. Oak 14 N84 1/2 E 681ks. = 44.9'

W. Oak 8 S15 1/2 E 1191ks. = 78.5'

SMC is N88°40'W 2367.4' from CN 1/16

36 M-21

SOUTH $\frac{1}{16}$ BET. SEC'S 13 AND 14

NOTES OF GLO RESURVEY 1919

SET IRON POST 1" DIA. X 36" LONG
WITH BRASS CAP MARKED

S $\frac{1}{16}$
S14 | S13
1919

FROM WHICH

J. PINE 16" N $76\frac{1}{2}^{\circ}$ E 73 LKS. = 48.18'

POPLAR 12" N 47° W 14 LKS. = 9.24'

FOUND BY SCHLUTER & CAMACHE IN 1965.

37 M-20
SOUTH EAST $\frac{1}{16}$ OF SEC. 14

NOTES OF GLO RESURVEY 1919

SET IRON POST 1" DIA. X 36" LONG
WITH BRASS CAP MARKED

Found iron $\frac{1}{2}$ cap - in place. SE $\frac{1}{16}$ S 14
in good condition - 10" above ground 1919

FROM WHICH

N. PINE 10" N 25 $\frac{1}{2}$ ° E 164 LKS. = 108.24'

FOUND ROTTED STUMP, WITH SCRIBE "4 BT" VISIBLE

N. PINE 10" S 21° W 242 LKS. = 159.72'

FOUND 20" N. PINE AT BRG. & DIST., SCRIBE OVERGROWN

TO PERPETUATE THIS CORNER WE SCRIBED
"3" NEW BEARING TREES AS FOLLOWS:

N. PINE 16" S 59° W 28.50' MKD: SE $\frac{1}{16}$ S 14 BT

N. PINE 13" N 9° E 31.55' MKD: SE $\frac{1}{16}$ S 14 BT

W. OAK 9" N 71° E 28.80' MKD: SE $\frac{1}{16}$ S 14 BT

SET 8' STEEL SIGN POST DUE NORTH 3.7' $\frac{W}{E}$ S. SIGN

54-2 & 54-4

SET 8' STEEL SIGN POST DUE SOUTH 3.6' $\frac{W}{E}$ S. SIGN

54-2 & 54-4

8/24/76

Kerry E. Johnson

38 M-19

CENTER SOUTH $\frac{1}{16}$ OF SEC 14

NOTES OF GLO RESURVEY 1919

SET IRON POST 1" DIA. X 36" LONG
WITH BRASS CAP MARKED

c
S $\frac{1}{16}$ S 14

c

1919

FROM WHICH
R. OAK 5" S 41° E 15 LKS. = 9.90'

R. OAK 14" S 40° W 14 LKS. = 9.24'

FOUND BY SARFF IN 1967

39 1-20

CENTER EAST $\frac{1}{16}$ OF SEC 14

NOTES OF GLO RESURVEY 1919

SET IRON POST 1" DIA. X 36" LONG
WITH BRASS CAP MARKED

Found iron cap - in place

in good condition - above ground

E $\frac{1}{16}$
C ——— C
S 14
1919

FROM WHICH

J. PINE 14" S $74\frac{1}{2}^{\circ}$ E 124 LKS. = 81.84'

R. OAK 14" S 32° W 90 LKS. = 59.40'

QUARTER CORNER BET. SEC. 13-14
 NOTES OF GLO RESURVEY 1919

SET IRON POST 1" DIA. X 36" LONG
 WITH BRASS CAP MARKED $\frac{1}{4}$

514 513

1919

FROM WHICH

R. OAK 8" EAST 44 LKS = 29.04'

J. PINE 20" S 32° W 70 LKS = 46.20'

41

NORTH $\frac{1}{16}$ BETWEEN SEC. 13-14

NOTES OF GLO RESURVEY 1919

SET IRON POST 1" DIA. X 36" LONG

WITH BRASS CAP MARKED

N $\frac{1}{16}$

S 14 | S 13

1919

FROM WHICH

J. PINE 10" S 79° E 43 LKS. = 28.38'

J. PINE 12" S $73\frac{1}{2}^{\circ}$ W 39 LKS. = 25.74'

42 K-20
NORTH EAST $\frac{1}{16}$ OF SEC. 14

NOTES OF GLO RESURVEY 1919

SET IRON POST 1" DIA. X 36" LONG
WITH BRASS CAP MARKED

Found iron $\frac{3}{4}$ " cap - in place NE $\frac{1}{16}$ S 14
in good condition - 8" above ground 1919

Cedar post 4" X 4" w/FSLP beside iron

FROM WHICH

J. PINE 16" N 50 $\frac{1}{2}$ ° E 132 LKS. = 87.12'

R. OAK 8" S 23° W 45 LKS. = 29.70'

Corner is located at S-SE edge of powerline
clearing - Cedar post with FSLP beside iron
road follows power line and corner would be
approx. 15' SE of road

43 K-19

CENTER NORTH $\frac{1}{16}$ SEC. 14

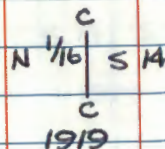
NOTES OF GLO RESURVEY 1919

SET IRON POST 1" DIA. X 36" LONG
WITH BRASS CAP MARKED

Found iron cap - in place

in good condition

4" above ground



FROM WHICH

J. PINE 14" S $33\frac{1}{2}^{\circ}$ E 195 LKS. = 128.70'

FOUND ROTTED STUMP AT BRG. $\frac{1}{3}$ DIST.

J. PINE 14" N 35° W 92 LKS. = 60.72'

FOUND ROTTED STUMP AT BRG. $\frac{1}{3}$ DIST.

TO PERPETUATE THIS CORNER WE SCRIBED 3

NEW BEARING TREES AS FOLLOWS

N. PINE 6" N 20° W 23.80' MKD. CN $\frac{1}{16}$ S 14 BT

N. PINE 12" S 67° E 13.05' MKD. CN $\frac{1}{16}$ S 14 BT

J. PINE 8" N 49° E 24.25' MKD. CN $\frac{1}{16}$ S 14 BT

SET 8' STEEL SIGN POST DUE EAST 3.6'

W/FS SIGNS 54-2 $\frac{1}{3}$ 54-4

SET 8' STEEL SIGN POST DUE WEST 3.8'

W/FS SIGNS 54-2 $\frac{1}{3}$ 54-4

8-17-76

Randy Morten
Jerry & Johnson

44 K-18, 19

SMC EAST SIDE STEAMBOAT BAY

10.82 CHAINS = 714.12' WEST OF C.N. $\frac{1}{16}$ S. 14

NOTES OF GLO RESURVEY 1919

SET IRON POST 1" DIA. X 36" LONG
WITH BRASS CAP MARKED

Found iron $\frac{1}{2}$ cap - in place SMC N / $\frac{514}{1919}$ N
12" above ground - in good condition

FROM WHICH

J. PINE 18" N 39° E 20 LKS. = 13.20'

NOW A ROTTED WINDFALL AT BRG. AND DIST.

P. OAK 8" S 3½° W 69 LKS. = 45.54'

NOW A ROTTED STP. AT BRG & DIST.

TO PERPETUATE THIS CORNER WE SCRIBED
3 NEW BEARING TREES AS FOLLOWS

W. OAK 7" N 25° E 18.25' MKD. S14 SMC BT

P. OAK 9" N 62° E 64.25' MKD. S14 SMC BT

P. OAK 7" S 44° E 12.75' MKD. S14 SMC BT

SET 8' STEEL SIGN POST DUE EAST 8.2'

W/FS SIGNS 54-2 & 54-4

8-17-76

Randy Morton
Larry & Johnson

45 J-18, 19

SMC EAST SIDE STEAMBOAT BAY

6.36 CHAINS = 419.76' WEST OF $\frac{1}{4}$ COR. OF SEC. 11 $\frac{1}{2}$ M

NOTES OF GLO RESURVEY 1919

RESTORED FROM ORIGINAL EVIDENCE

SET IRON POST 1" DIA. X 36" LONG

WITH BRASS CAP MARKED

Found iron $\frac{1}{2}$ cap - in place.

in good condition

14" above ground

FROM WHICH

T 43N R 31W

MC / S 11
S 14

1919

W. OAK 5" N 28° E 12 LKS. = 7.92'

NO EVIDENCE OF WHITE OAK

R. OAK 16" S 26° E 19 LKS. = 12.54"

NOW A 16" R. OAK SNAG AT BRG. $\frac{1}{2}$ DIST. SCRIBE

VISIBLE

TO PERPETUATE THIS CORNER WE SCRIBED

3 NEW BEARING TREES AS FOLLOWS

W. OAK 9" S 66° E 34.43' MKD. SMC S 14 BT

W. OAK 13" S 12° E 28.40' MKD. SMC S 14 BT

W. OAK 13" N 22° E 7.50' MKD. SMC S 11 BT

SET 8' STEEL SIGN POST DUE EAST 3.7'

W/FS SIGN 54-4

8-19-76

Randy Morton

46 J-19

QUARTER CORNER BET. SECS. 11 & 14

NOTES OF GLO RESURVEY 1919

RESTORED FROM ORIGINAL EVIDENCE

SET IRON POST 1" DIA. X 36" LONG

WITH BRASS CAP MARKED

Found iron $\frac{3}{4}$ " cap - in place. $\frac{1}{4}$ S 11

4" above ground - in good condition 1919

FROM WHICH ORIGINAL BT'S REMARKED

N. PINE 30" N 15° E 52 LKS. = 34.32'

NOW A ROTTED STUMP AT BRG. $\frac{1}{3}$ DIST.

N. PINE 24" S 19° E 67 LKS = 44.22'

NOW A ROTTED STUMP AT BRG. $\frac{1}{3}$ DIST.

TO PERPETUATE THIS CORNER WE SCRIBED

3 NEW BEARING TREES AS FOLLOWS

W. OAK 7" N 75° E 19.70' MKD. $\frac{1}{4}$ S 11 BT

W. OAK 7" N 60° W 18.40' MKD. $\frac{1}{4}$ S 11 BT

W. OAK 6" S 18° W 43.83' MKD. $\frac{1}{4}$ S 14 BT

SET 8' STEEL SIGN POST DUE EAST 4.9'

W/FS SIGN 54-4

8-19-76

Randy Morton

Ferry S. Johnson

47 J-20

EAST $\frac{1}{16}$ BETWEEN SEC'S. 11 $\frac{1}{3}$ 14

NOTES OF GLO RESURVEY 1919

SET IRON POST 1" DIA. X 36" LONG

WITH BRASS CAP MARKED

Found iron $\frac{1}{2}$ cap - in place.

E $\frac{1}{16}$	S 11
	S 14
	1919

FROM WHICH

J. PINE 14" S 61° E 14 LKS = 9.24'

J. PINE 14" N 28° E 32 LKS = 21.12'

48 J-21

SECTION CORNER TO SECS. 11, 12, 13, 14

NOTES OF GLO RESURVEY 1919

RESTORED FROM ORIGINAL EVIDENCE

SET IRON POST 2" DIA X 36" LONG

WITH BRASS CAP MARKED T143N R31W

Found iron $\frac{1}{2}$ cap - in place

S 11	S 12
S 14	S 13

in good condition - 4" above ground

1919

falls in open cut over area - now small aspen sprouts

FROM WHICH

J. PINE 20" N43°E 67 LKS = 44.22'

Found J. Pine stub 10" high at brq $\frac{1}{2}$ dist. ^{T143N R31W S12 BT} scribe visibleJ. PINE 9" S33 $\frac{1}{2}$ °E 28 LKS = 18.48'Found J. Pine stump at brq $\frac{1}{2}$ dist. with T visible

ORIGINAL BT'S

J. PINE 18" S64°W 28 LKS = 18.48'

Found J. Pine stp. and log at brq $\frac{1}{2}$ dist.

J. PINE 14" N34°W 30 LKS = 19.80'

Found J. Pine stp. $\frac{1}{2}$ log at brq $\frac{1}{2}$ dist. ^{T143N R31W S11} with all scribe visible

CC DONECK

8-6-76

Found FSLP on 12" Birch approx. 15' east of corner

chained east 195' and place FSLP on 12" W. Pine - on NW side of road along powerline clearing

To perpetuate this corner I scribed 4 new bearing trees as follows

N. Pine NO SCRIBED ^{JUST BLAZED} MKD T143N R31W S14 BTW. Pine NO SCRIBED ^{JUST BLAZED} MKD T143N R31W S13 BT

6-9-95 W. PINE IS NOW A STUB - NOT SCRIBED AS SHOWN - NO NAIL OR TAG

N. PINE WAS NOT SCRIBED, AS SHOWN ABOVE

Set 3' steel post due ^{NORTH} 3.4' W/FS sign 59-4

MARKED NEW BT'S. 6-9-95CK

N. PINE 11 $\frac{1}{2}$ " S10W - 159.30

N. PINE 17" S02E - 141.25'

W. OAK 7 $\frac{1}{2}$ " N83E - 41.72' MKD S12 BT

FROM WEST TO NORTH TO EAST IS ALL ASPEN

REGENERATION NOW WITH SCATTERED SMALL OAK - CORNER IS APPROX. 225' ^{FR 3745} NORTH OF OLD

WOODS ROAD AND APPROX. 550' NORTH OF OAK

POINT ROAD NE-SW

49 J-22
WEST $\frac{1}{16}$ BETWEEN SEC'S. 12 & 13
NOTES OF GLO RESURVEY 1919

SET IRON POST 1" DIA. X 36" LONG
WITH BRASS CAP MARKED

W $\frac{1}{16}$	S 12
	S 13
	1919

FROM WHICH
POPLAR 7" N 12° E 53 LKS = 34.98'
POPLAR 10" S 71° W 37 LKS. = 24.42'

T143 N R31W
Book #1

49

QUARTER CORNER OF SEC'S. 12 & 13

NOTES OF GLO RESURVEY 1919

RESTORED FROM ORIGINAL EVIDENCE

SET IRON POST 1" DIA. X 36" LONG

WITH BRASS CAP MARKED

$\frac{1}{4}$	S 12
	S 13
	1919

FROM WHICH

POPLAR 10" N 77° W 194 LKS = 128.04'

POPLAR 4" S 16° W 141 LKS = 93.06'

EAST $\frac{1}{16}$ BETWEEN SEC'S 12 & 13
 NOTES OF GLO RESURVEY 1919

SET IRON POST 1" DIA. X 36" LONG
 WITH BRASS CAP MARKED

E $\frac{1}{16}$	S 12
	S 13
	1919

FROM WHICH

J. PINE 8" S $36\frac{1}{2}^{\circ}$ E 63 LKS. = 41.58'

J. PINE 8" N $33\frac{1}{2}^{\circ}$ W 82 LKS. = 54.12'

52 J-25
Section

~~QUARTER~~ CORNER OF SEC'S. 12, 13, 7, 18

NOTES OF GLO RESURVEY 1919

SET IRON POST 2" DIA. X 36" LONG

WITH BRASS CAP MARKED

Found iron cap-in place

in good condition - 4" above ground

T 143 N	
R 31 W	R 30 W
512	57
513	518
1919	

FROM WHICH

W. OAK 4" N 5° E 39 LKS = 25.74'

W. OAK 4" S 46° E 26 LKS = 17.16'

POPLAR 12" S 29° W 53 LKS = 34.98'

POPLAR 5" N 31° W 29 LKS = 19.14'

Put FSLP on 6" W. Oak 150' east of corner
on west side of Squaw point road

53 K-25
NORTH 1/16 BETWEEN SEC'S. 13 & 18

NOTES OF GLO RESURVEN 1919

SET IRON POST 1" DIA. X 36" LONG

WITH BRASS CAP MARKED N 1/16

Found iron in place - bent to ground
cap has been removed - but iron
is set solid in ground S 13 S 18
1919

FROM WHICH

W. OAK 12" N 86° W 101 LKS = 66.66'

Now 18" Twin W. Oak at brg 1/2 dist. scribe overgrown

N. PINE 12" S 69° E 40 LKS = 26.40'

Found N. Pine stump at brg 1/2 dist. with small
area of flat blaze visible - no scribe marks

Put FSLP on Power pole north of corner
approx. 12'

54 L-25

QUARTER CORNER BET. SECS. 13 & 18

NOTES OF GLO RESURVEY 1919

RESTORED FROM ORIGINAL EVIDENCE

ORIGINAL BT'S

J. PINE 24" S 28° E 20 LKS = 13.20'

Found pieces of burned and rotted J. Pine stp.
at brq $\frac{1}{2}$ dist. - evidence of roots in ground

FROM WHICH

R. OAK 6" N 23 $\frac{1}{2}$ ° W 34 LKS = 22.44'

No evidence found - in powerline clearing

W. OAK 4" N 2° E 18 LKS = 11.88'

No evidence found - in powerline clearing

SET IRON POST 1" DIA. X 36" LONG

WITH BRASS CAP MARKED

Found iron bent and buried

in powerline clearing - cap is S 13 S 18

on iron - and believe iron is

in place - as we can't pull it up

bent iron to stand up approx. 14" above grd.

set 3" maple post beside iron and place

FSLP on post

$\frac{1}{4}$

1919

55 SOUTH $\frac{1}{16}$ BETWEEN SEC'S. 13 & 18

NOTES OF GLO RESURVEY 1919

SET IRON POST 1" DIA. X 36" LONG
with brass cap marked 5/16

518 | 513

1919

From which

W. Oak 4 S76E 251ks. = 16.5'

W. Oak 12 N28 $\frac{1}{2}$ W 391ks. = 25.7'

56 Center South $\frac{1}{16}$ Sec. 13

Notes of GLO Resurvey 1919

Proportional Distance

Set iron post 1" Dia. x 36" long
with brass cap marked

C
S $\frac{1}{16}$ | S13
C
1919

From which

Spruce 4 N5 $\frac{3}{4}$ E 771ks. = 50.8'

Spruce 6 S6W 2141ks. = 141.2'

58 2-24

Center east 1/16 Sec 13

Notes of GLO Resurvey 1919

Proportional Distance.

Set iron post 1" Dia. X 36" long

with brass cap marked

Found iron cap - in place C $\frac{E416}{S13}$ C

above ground - in good 1919

condition

From which

W. Oak 16 S43½E 40 lks. = 26.4'

N. Pine 26 S21W 72 lks. = 47.5'

59 L-23

Center Quarter Sec. 13

Notes of GLO Resurvey 1919

Proportional Distance

Set iron post 1" Dia. X 36" long

with brass cap marked

Found iron $\frac{1}{2}$ " cap - in place C $\frac{1}{4}$ S 13

above ground

1919

in good condition

From which

J. Pine 6 N76 $\frac{1}{2}$ E 731ks. = 48.2'

J. Pine 12 S44 $\frac{1}{4}$ E 281ks. = 18.5'

Center North $\frac{1}{16}$ Sec. 13
Notes of GLO Resurvey 1919

Proportional Distance

Set iron post 1" Dia X 36" long
with brass cap marked

C
N $\frac{1}{16}$ | S 13

C

1919

From which

J. Pine 8 N 19 E 251ks. = 16.5'

J. Pine 9 S 22 E 491ks. = 32.3'

61

North east $\frac{1}{16}$ Sec. 13

Notes of GLO Resurvey 1919

Proportional Distance

Set iron post 1" Dia. X 36" long
with brass cap marked

NE $\frac{1}{16}$ S13

1919

From which

J. Pine 8 S38E 441ks. = 29.0'

R. Oak 5 N63 $\frac{3}{4}$ E 501ks. = 33.0'

62 Center South 1/16 Sec. 12

Notes of GLO Resurvey 1919

Proportional Distance

Set iron post 1" Dia. X 36" long

with brass cap marked

C
5/116 | 5/12

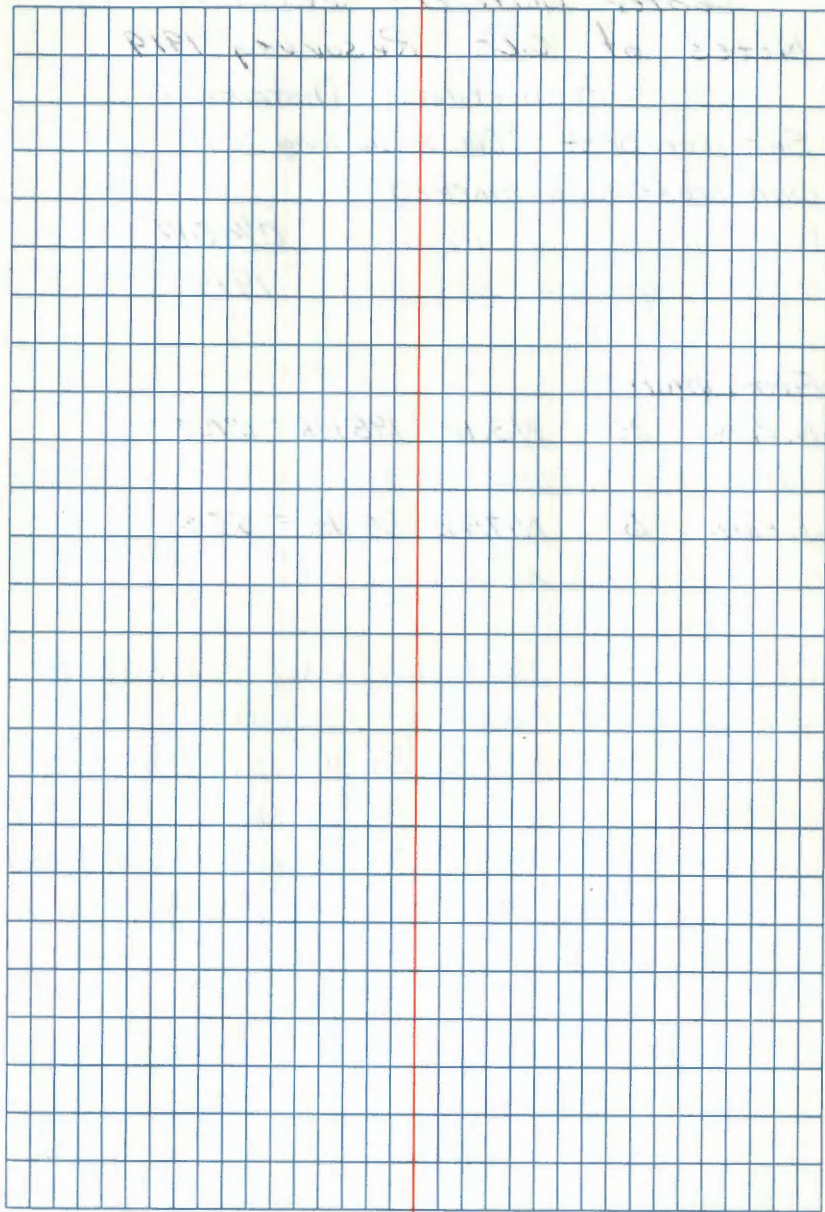
C

1919

From which

J. Pine 9 South 2681ks = 176.9'

Aspen 3 S75W 211ks = 13.9'



63 G-23

Center Quarter Sec. 12

Notes of GLO Resurvey 1919

Proportional Distance

Set iron post 1" Dia. X 36" long

with brass cap marked

Found iron $\frac{3}{4}$ " cap - in place. C $\frac{1}{4}$ S12

4" above ground - in good 1919

condition

From which

N. Pine 20 N31W 198 lks. = 130.7'

FOUND STUB-WINDELL AT BRG. & DIST. W / C $\frac{1}{4}$ S12 BT
VISIBLEJ. Pine 6 N17 $\frac{1}{4}$ E 84 lks. = 55.4'FOUND WINDELL AT BRG. & DIST. W / C $\frac{1}{4}$ S12 BT
VISIBLE

TO PERPETUATE THIS CORNER WE SCRIBED "3"

NEW BEARING TREES AS FOLLOWS:

N. PINE 22" N42°E 31.00' MKD: C $\frac{1}{4}$ S12 BTN. PINE 16" S20°E 38.95' MKD: C $\frac{1}{4}$ S12 BTW. PINE 18" N63°W 36.05' MKD: C $\frac{1}{4}$ S12 BT

SET 8' STEEL SIGN POST DUE NORTH 2.9' W / E. SIGN

54-4.

8/25/76

Jerry G. Johnson
Loren Cowden

E-2

64 Center east 1/16 Sec. 12
Notes of GLO Resurvey 1919
Proportional Distance

Set iron post 1" Dia. x 36" long
with brass cap marked

$$C \frac{E416}{512} C$$

1919

From which

Aspen 6 S70¹/₄E 401ks. = 26.4'

J. Pine 14 N61¹/₂W 1051ks. = 69.3'

65 Center west 1/16 Sec. 12
Notes of 660 Resurvey 1919
Proportional Distance

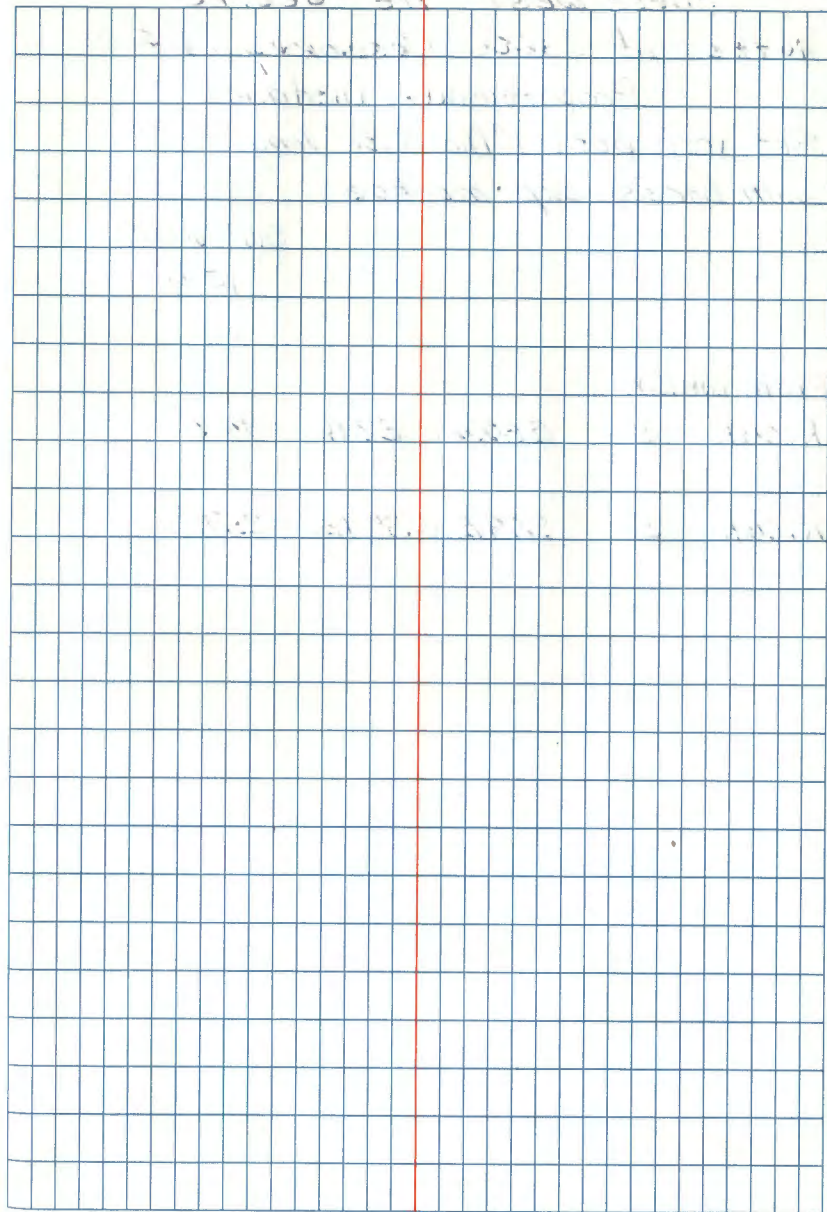
Set iron post 1" Dia. x 36" long
with brass cap marked

$$\frac{W 1/16}{512} \times 1919$$

From which

J. Pine 6 N60W 951ks. = 62.7'

J. Pine 6 S26E 1121ks. = 73.9'



66 Southwest 1/16 Sec. 12

Notes of GLO Resurvey 1919
Proportional Distance

Set iron post 1" Dia. x 36" long
with brass cap marked

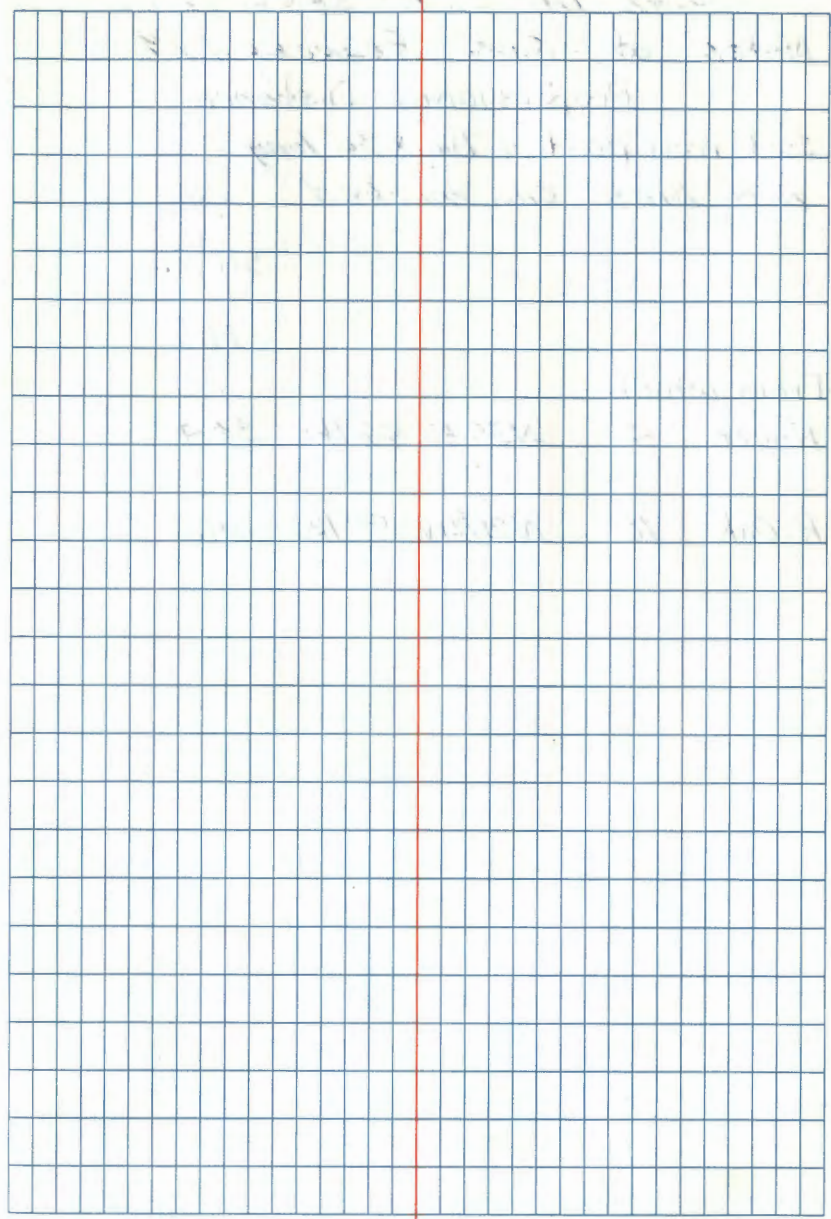
SW 1/16 S12
1919

From which

R. Oak 5 S52 1/4 E 221 ks. = 14.5'

R. Oak 5 S79 1/2 W 391 ks. = 25.7'

67



South $\frac{1}{16}$ Bet. Sec's. 11-12
 Notes of 660 Resurvey 1919
 Proportional Distance.

Set iron post 1" Dia. X 36" long
 with brass cap marked S $\frac{1}{16}$

S $\frac{1}{16}$ | S $\frac{1}{12}$

1919

From which

Aspen 4 N39E 461ks. = 30.4'

R. Oak 10 N28 $\frac{3}{4}$ W 971ks. = 69.0'

68 G-21

Quarter Corner Bet. Sec's. 11-12

Notes of GLO Resurvey 1919

Restored from original evidence

J. Pine stump - trunk lying alongside mkd

 $\frac{1}{4} S 77 E 71 ks. = 46.9'$ 8/7/80
Fd. no evidenceW. Pine 18 N45 $\frac{1}{2}$ W 30 ks. = 19.8' mkd. $\frac{1}{4} S$

Fd. W. Pine stp at N46°W at 19.80'

Set iron post 1" Dia. X 36" long $\frac{1}{4}$
with brass cap marked

Fd. 1" X 36" iron pipe with B.C.

S11 | S12

set in place set 2" above grd.

1919

From which

N. Pine 14 N85E 7 ks. = 4.6'

Fd. N. Pine 22" N85E at 4.62' ^{old} F.S.L.P. scribe visibleW. Pine 18 N45 $\frac{1}{2}$ W 30 ks. = 19.8' orig. BT

Fd. W. Pine stp. N46W at 19.8'

FOUND BY BROWN & MARTINSON IN 1966.

Mkd. New BT's:

1. R. Oak 7" S82°W 27.25' $\frac{1}{4}$ S11 BT2. R. Pine 17" N37°W 34.91' $\frac{1}{4}$ S11 BT3. R. Pine 21" N11°W 41.77' $\frac{1}{4}$ S11 BT8' steel sign posts north & west from corner
with both signs attached.

8/7/80-GB-RM-DM

F.S. trail is south of corner approx 400'

Placed a F.S.L.P. on north side of trail. (E-W)

69 Center east 1/16 Sec. 11

Notes of GLO Resurvey 1919

Proportional Distance

Set iron post 1" Dia. x 36" long

with brass cap marked

C $\frac{E 1/16}{S 11}$ C
1919

From which

Blk. Ash 14 S19 1/2 E 1001ks. = 66.0'

Blk Ash 12 N27 1/2 W 701ks. = 46.2'

Section Corner to Sec's, 1-2-11-12

Notes of GLO Resurvey 1919

Restored from original evidence.

Found Dead Tam. stp. S11E 331ks = 21.8'
with scribe plainly visible. Fd. no evidence

7/31/80

Set iron post 2" Dia. X 36" long
with brass cap marked

Fd. 2" x 36" iron pipe with B.C. laying T143N R31W

under moss but in place. Stood straight up S2 | S1

and braced it 1" high. Fd. 2" diam wood post approx. S11 | S12
1.5' long alongside mon. 1919

From which

Tam. 6 N49 1/2 E 481ks. = 31.7'

Fd. Tam 6 at N50E at 21.78' scribe closed Tagged

Tam. 4 S61 1/2 E 91ks. = 5.9'

Fd. no evidence

Tam. 5 S71 1/2 W 271ks. = 17.8'

Fd. no evidence

Tam. 5 N41W 231ks. = 15.2'

Fd. Tam. stub 6" at N41W at 15.18'. Tagged

Fd. old metal tag on Tam 9", N48E at 6.70' tree grown
over tag.

Mkd. New BT's:

1. Tam 5" N12W 15.86' T143N R31W S2BT

2. Tam 6" S81W 21.02' T143N R31W S11BT

3. Tam 7" S60E 22.86' T143N R31W S12BT

F.S.L.P on 9" Tam at N48E at 6.66'

Attention sign on a 5" Tam, S34W at 8.38'

2/29/84 Gary Brama

7/31/80 - Brama, Main, Morisch

Corner falls in a tamar cedar swamp.

Traverse lines cut east and south of corner.

71 E-23

Quarter Corner Bet. Sec.'s 1-12

Notes of GLO Resurvey 1919

Restored from original evidence

Found live N. Pine 12" S8E 178 lks. = 117.5'

with scribe 1/4 512

8/26/80 Fd. N. Pine stp., S8E at 117.98'

Found N. Pine stub 12 N81W 149 lks. = 98.3'

with scribe marks visible

Fd. stump hole at N81W, 98.34

Set iron post 1" Dia. x 36" long

with brass cap marked

Fd. 1" x 36" iron pipe with B.C. $\frac{1}{4}$ 51

set in place, set 6" above ground. 512
1919

From which

N. Pine 6 N51W 10 lks. = 6.6'

Fd. 13" N. Pine, N51W at 6.6'

N. Pine 8 S7 1/4 E 36 lks. = 23.8'

Fd. N. Pine stp. S7E at 23.76'

FOUND BY BROWN & MARTINSON IN 1966

Mkd. New BT'S:

1. N. Pine 13" S64E 42.80' $\frac{1}{4}$ 512 BT

2. N. Pine 13" S14W 26.77' $\frac{1}{4}$ 512 BT

8" steel sign post west 4.25' & east 4.25 with
both signs.

2/24/89 Gary Beano

8/26/80-GB-RM.-TB

Fd. a F.S.L.P. on 10" R.P. S48°E, 2.69'

Line to the west is mkd. to F.S. standard

Southeast 1/16 Sec. 11

Notes of GLO Resurvey 1919

Proportional Distance

Set iron post 1" Dia. x 36" long
with brass cap marked

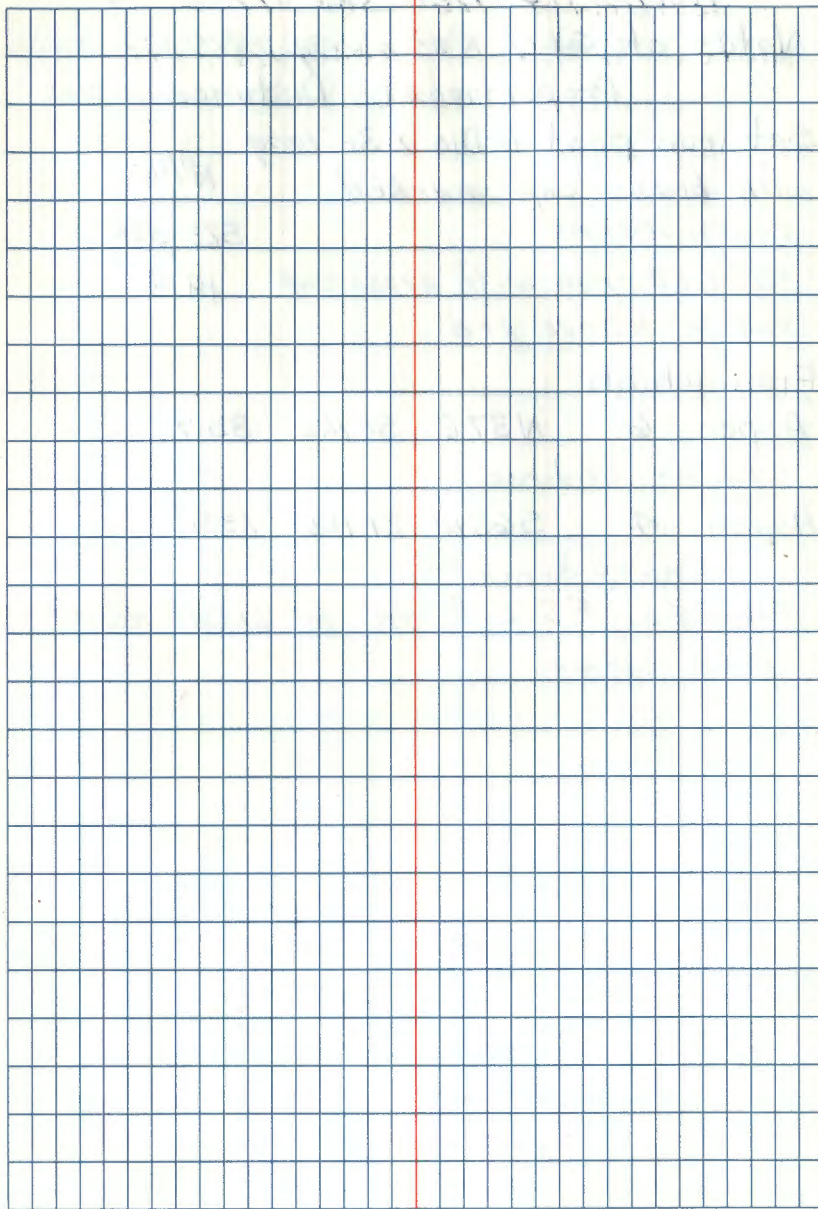
SE 1/16 S11

1919

From which

N. Pine 10 N34 1/2 E 1091 ks. = 71.9'

J. Pine 8 S50 1/2 E 1081 ks. = 71.3'



73 North 1/16 Bet. Sec's. 23-24

Notes of GLO Resurvey 1919

Proportional Distance

Set iron post 1" Dia. X 36" long

with brass cap marked N'116

5/14/91 - BRAMA

S23 | S24

Fd. GLO iron with brass cap 1919

set 9" above gr'd.

From which

Aspen 6 N37E 51 lks. = 33.7'

Fd. no evidence.

Aspen 4 S65W 21 lks. = 13.9'

Fd. no evidence

Placed a F.S.L.P. on 10" W.OAK N31W 9'

from corner

5/14/91 Measured 1328' south from S. Corner.
Distance checked good.

Quarter Corner Bet. Sec's. 23-24
Notes of GLO Resurvey 1919

Restored from original evidence

Found W. Oak stp. 566 $\frac{1}{2}$ W 481ks. = 31.7'
with trunk of same showing scribe $\frac{1}{4}$ "
Fd. no evidence

Set iron post 1" Dia. x 36" long
with brass cap marked $\frac{1}{4}$ "

5/14/91 - BRAMA 523 | 524

Found GLO iron with brass 1919
cap set 10" above ground.

From which

Poplar 6 S71W 91ks. = 5.9'

Fd. no evidence

Poplar 7 S48E 361ks. = 23.8'

Fd. no evidence

Placed a F.S.L.P. on 6" W OAK N65E
at 18" from corner.

5/14/91 - Measured from NY 6 1328' south,
Distance checked, Corner falls in aspen
regeneration.

Osprey nest is N77E approx 150' from corner.
Nest is in a pine snag.

75 Q-21

South 1/16 Bet. Sec's. 23-24

Notes of GLO Resurvey 1919

Proportional Distance

Set iron post 1" Dia. X 36" long
with brass cap marked 5/116

5/14/91 BRAMA 523 | 524

Found GLO iron pipe with 1919
brass cap set 5" above ground.

From which

R. Oak 20 N5E 1121ks. = 73.9'

Fd. no evidence

Poplar 4 S27 1/2 W 221ks. = 14.5'

Fd. no evidence

Found By SARAF IN 1967.

5/14/91 Placed a BT tag on a 10" W. OAK
S58E at 14' from corner.

5/14/91 Measured from 1/4 corner bet. sec's. 23, 24
S1W. Distance checked good.
Placed a F.S.L.F. on 12" W. Pine 273'
N89W from corner. W. Pine is on
the west side of a NE-SW cross
country trail.

Center west $\frac{1}{16}$ Sec. 24
 Notes of 600 Resurvey 1919
 Proportional Distance.

Set iron post 1" Dia. x 36" long
 with brass cap marked

C $\frac{W\frac{1}{16}}{524}$ C
 1919

From which

Tam. 6 S30 $\frac{1}{2}$ W 201ks. 13.2'

Tam. 8 N24E 261ks. = 17.2'

Center east $\frac{1}{16}$ Sec. 24
Notes of GLO Resurvey 1919
Proportional Distance.

Set iron post 1" Dia. X 36" long
with brass cap marked

C $\frac{E 416}{524}$ C
1919

From which

R. Oak 6 N25E 141ks. = 9.2'

Poplar 6 S20W 191ks. = 12.5'

CURVE TABLES

Published by KEUFFEL & ESSER CO.

HOW TO USE CURVE TABLES

Table I. contains Tangents and External to a 1° curve. Tan. and Ext. to any other radius may be found nearly enough, by dividing the Tan. or Ext. opposite the given Central Angle by the given degree of curve.

To find Deg. of Curve, having the Central Angle and Tangent: Divide Tan. opposite the given Central Angle by the given Tangent.

To find Deg. of Curve, having the Central Angle and External: Divide Ext. opposite the given Central Angle by the given External.

To find Nat. Tan. and Nat. Ex. Sec. for any angle by Table I.: Tan. or Ext. of twice the given angle divided by the radius of a 1° curve will be the Nat. Tan. or Nat. Ex. Sec.

EXAMPLE

Wanted a Curve with an Ext. of about 12 ft. Angle of Intersection or I. P. = $23^\circ 20'$ to the R. at Station 542+72.

Ext. in Tab. I opposite $23^\circ 20' = 120.87$
 $120.87 \div 12 = 10.07$. Say a 10° Curve.

Tan. in Tab. I opp. $23^\circ 20' = 1183.1$
 $1183.1 \div 10 = 118.31$.

Correction for A. $23^\circ 20'$ for a 10° Cur. = 0.16
 $118.31 + 0.16 = 118.47 =$ corrected Tangent.

(If corrected Ext. is required find in same way)

Ang. $23^\circ 20' = 23.33^\circ + 10 = 2.3333 =$ L. C.

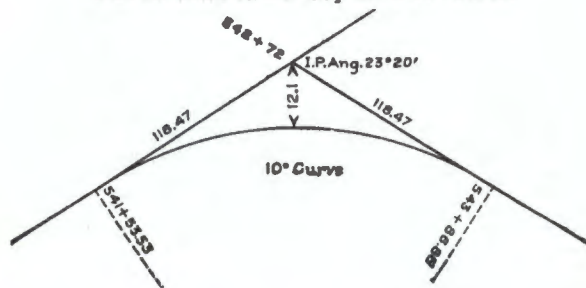
$2^\circ 19\frac{1}{2}' =$ def. for sta.	542	I. P. = sta.	542+72
$4^\circ 49\frac{1}{2}' =$ " " "	+50	Tan. =	118.47
$7^\circ 19\frac{1}{2}' =$ " " "	543	B. C. = sta.	541+53.53
$9^\circ 49\frac{1}{2}' =$ " " "	+50	L. C. =	2.3333
$11^\circ 40' =$ " " "	543+	E. C. = Sta.	543+86.86
	86.86		

$100 - 53.53 = 46.47 \times 3' (\text{def. for 1 ft. of } 10^\circ \text{ Cur.}) = 139.41' =$

$2^\circ 19\frac{1}{2}' =$ def. for sta. 542.

Def. for 50 ft. = $2^\circ 30'$ for a 10° Curve.

Def. for 36.86 ft. = $1^\circ 50\frac{1}{2}'$ for a 10° Curve.



Aug. 9, 2012
Garmin GPS - NAD 83

NW cor. Cem.
N $47^{\circ}10'16.8''$
W $94^{\circ}34'09.3''$

SW cor. Cem.
N $47^{\circ}10'13.7''$
W $94^{\circ}34'09.1''$

SE cor. Cem.
N $47^{\circ}10'13.4''$
W $94^{\circ}33'59.4''$

NE cor. Cem.
N $47^{\circ}10'16.6''$
W $94^{\circ}33'59.5''$

Placed orange flagging at the
NW, NE & SE corners. The SW corner
is approx. N 75° W 100 ft. from the flag pole.
MCA

