

T143R28

TRAV

BK2

T143N R28W
BK2

TRAVERSE

NIETZ

NEW YORK

NOV 1951

USFS, CASS COUNTY, MN

INDEX

Pg 2-3 TRAVERSE BETWEEN $\frac{26}{35}$ $\frac{25}{36}$ SOUTH
TO $\frac{35}{21}$ $\frac{36}{1}$

Pg 4-5 TRAVERSE $\frac{35}{21}$ $\frac{36}{1}$ WEST TO $\frac{34}{3}$ $\frac{35}{2}$

Pg 6 SET $\frac{1}{4}$ $\frac{35}{36}$, SET PROP CORNER 817.13 FT NORTH
OF $\frac{1}{4}$ $\frac{35}{36}$

Pg 7 SET E $\frac{1}{6}$ $\frac{35}{2}$

Pg 8 SET $\frac{1}{4}$ $\frac{35}{2}$

TRAVERSE NE 35 TO SE 35

FS 3 171-44-40
~~171-43-46~~ 351-44-05 171-44-54 351-44-53
 BS 1 00-00-11
~~00-00-00~~ 179-59 2000-00-00 180-00-21
 TP 2 171-44-46 171-44-48 171-44-54 171-44-32

171-44-44

2-1 1044.92 318.492

2-3 903.155 275.282 903.120

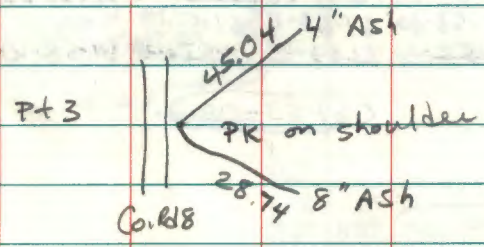
FS 4 199-41-17 19-41-26 199-41-12 19-41-29
 BS 2 00-00-00 180-00-03 359-59-39 180-00-00
 TP 3 199-41-17 199-41-23 199-41-33 199-41-29

199-41-26

3-4 1789.825 545.539

2/24/03 CLEAR-10

Pt. 1 is GLO B.C. monument marking NE 35
 Pt 2 is GLO B.C. mon. marking MC bet 35/36



FS 5 198-13-57 18-14-17 198-13-59 18-14-16
 BS 3 00-00-00 180-00-22 00-00-03 180-00-16
 TP 4 198-13-55 198-13-55 198-13-59 198-14-00

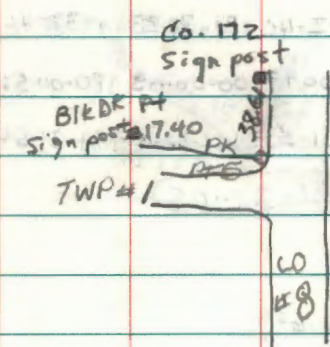
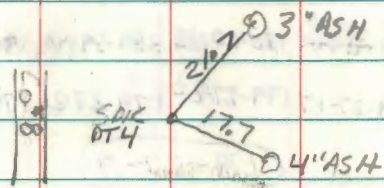
198-13-57

4-5 1731.63 527.802

FS 6 61-53-00 241-53-16 61-53-02
~~61-52-30~~ 241-52-43 ~~61-51-31~~ 241-51-45
 BS 4 180-00-05 359-59-49
 00-00-00 179-59-20 359-59-43 179-58-35
 TP 5 61-53-00 61-53-11 61-53-13
~~61-52-30~~ ~~61-53-23~~ ~~61-52-18~~ 61-53-10

61-53-08

5-6 1078.965 328.869



PT# 35/36
 2/1

T RAVERSE SE 35 TO SW 35

FS 7 ¹⁷ 179-27-10 359-27-33 179-27-01 359-27-18

BS 6 ⁰⁰⁻⁰⁰⁻⁰⁰ 179-27-11 180-00-13 359-59-40 180-00-01

TP 5 179-27-17 179-27-20 179-27-21 179-27-17

179-27-19

S-6 1078.965 328.869

S-7 2396.40 730.423

FS 8 ¹⁸¹⁻³²⁻¹⁷ 181-31-41 181-32-40 181-32-23 1-32-46

BS 5 00-00-00 180-00-49 00-00-05 180-00-52

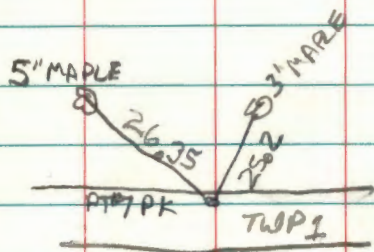
TP 7 181-32-17 181-31-51 181-32-18 181-31-54

181-32-05

7-8 ^{730.605} ~~730.61~~ 222.689

2/24/03

PT6 35 | 36
2 | 1



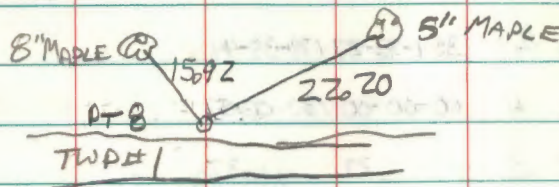
F.S. 9 178-05-29 ³⁵⁸⁻⁰⁵⁻¹⁸ 178-05-29 358-05-52

BS 7 00-00-00 180-00-29 00-00-20 180-00-38

TP 8 178-05-29 178-05-19 178-05-09 178-05-14

(178-05-14)

8-9 1732.585 ft / 528.093 m.



PT 9 $\frac{34}{3} \frac{35}{2}$

SET # 35/36

FS 1/4 359-35-27 179-35-44

BS 4 00-00-00 180 0007

TPC 3 27 37

359-35-32

3-4 687.77 / 209.631

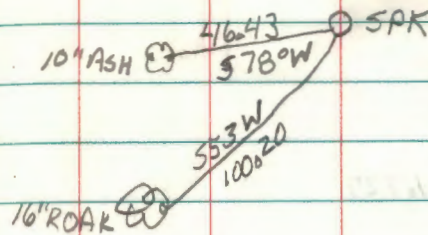
SET PROP COR 817.13 FT NORTH
OF 1/4 35/36

TPC 1/4, SITE ON SECTION CORNER $\frac{26}{25}$
 $\frac{35}{36}$
SET SPIKE ONLINE 817.13 FT NORTH
OF 1/4 35/36

2/26/03 CLEAR 10°

RMAIN 207
BRAMA
SCHOONOVER
GETER

6



SPK FOR PROP CORNER

SET E $\frac{1}{16}$ $\frac{35}{2}$

FS E $\frac{1}{16}$ 359-28-26 179-28-36

BS 7 00-00-00 180-00-03

T 5

DIST 5-E $\frac{1}{16}$ 563.42 171.727

7"ASH

QNHZW
50035

N38E
61.55

6"ASH

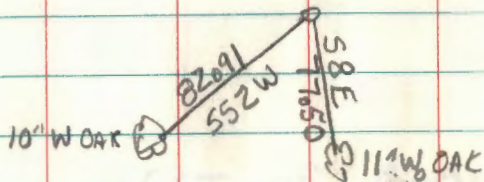
SET $\frac{1}{4}$ $\frac{35}{2}$

ES $\frac{1}{4}$ $\frac{2}{33}$ 359-59-52 1800000

BS 7 00-00-00 180 00 06

TC 5 359 59 54

DIST 5- $\frac{1}{4}$ 2205.71 672.301



REST OF BOOK
IS BLANK