

CORNER
RESTORATION
T59N, R 26W



MINING
TRANSIT BOOKS

No. 384E

BOOK #2

T59 N 26 BK # 2

Book # 2 of 4
T 59 N R 26 W

USFS 3-4-42

T 59 N R 26 W

Section 17

T59N R26W

4th P.M. Itasca County

					35		34	
6	5	4	3	36	2	45 46 47	1	
				62	67	341	4342	
				61				
7	8	9	71	10	60	11	40	12
			78	79	58	59	37	39 38
18	17	16	74	15	57	14	33	13
			77	73	55	56	30	32 31
19	20	21	76	22	54	23	29	24
				75			28	26 25 24
					53			
30	29	28	27	51	26		25	
					23			
515	11	6		72	52	50	22	
	19 18			70	49			
9	20	21	10	32	33	34	35	36
12		16						
4	13	14	7					

Colored numbers refer to page on which notes for that corner may be found.

15th Oct 1951

[Faint, illegible handwriting on lined paper]

15th Oct 1951

[Faint, illegible handwriting on graph paper]

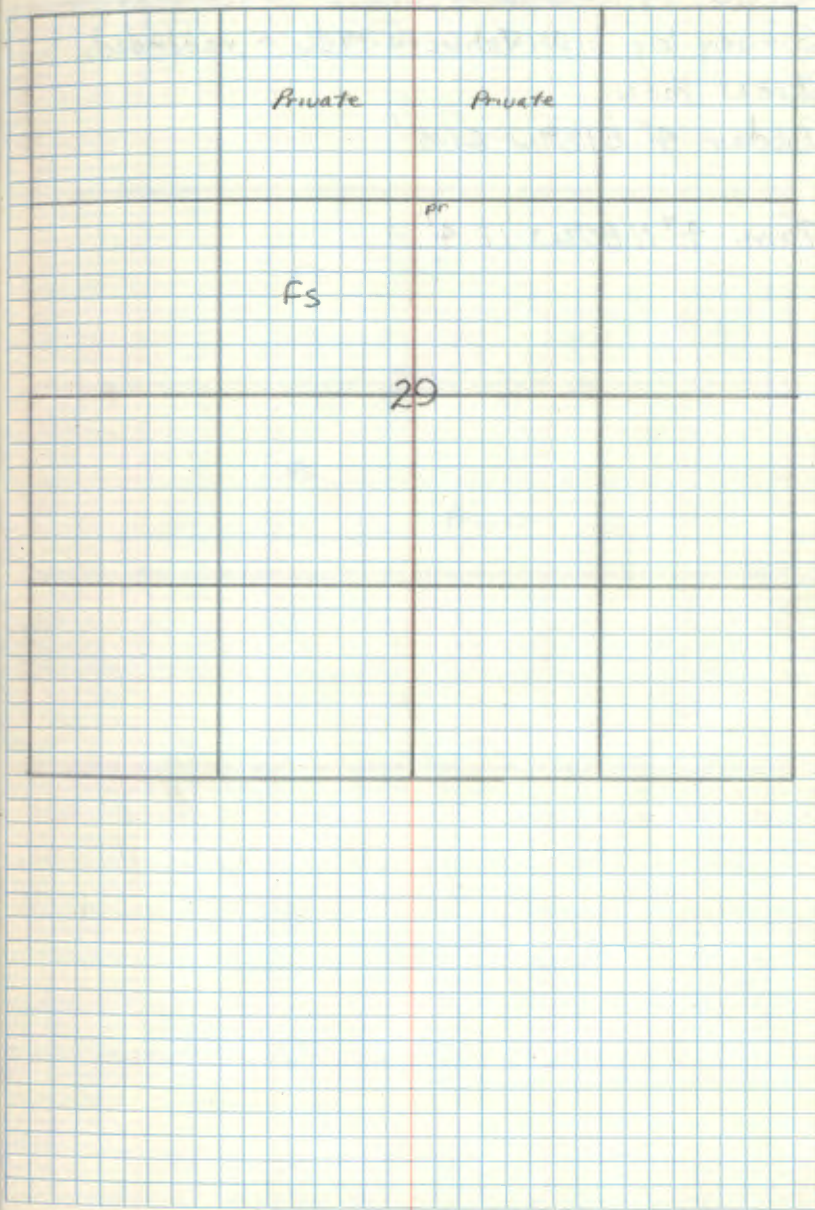
2

Special Sec. 29
Meander Cor. on $\frac{1}{4}$ Line South side of Point
Survey by L.W. Johnson 1926 - recorded.

Iron. MON.

Cedar 4" N5°E 35.4'

Cedar stp. 12" N20°W 29.3'



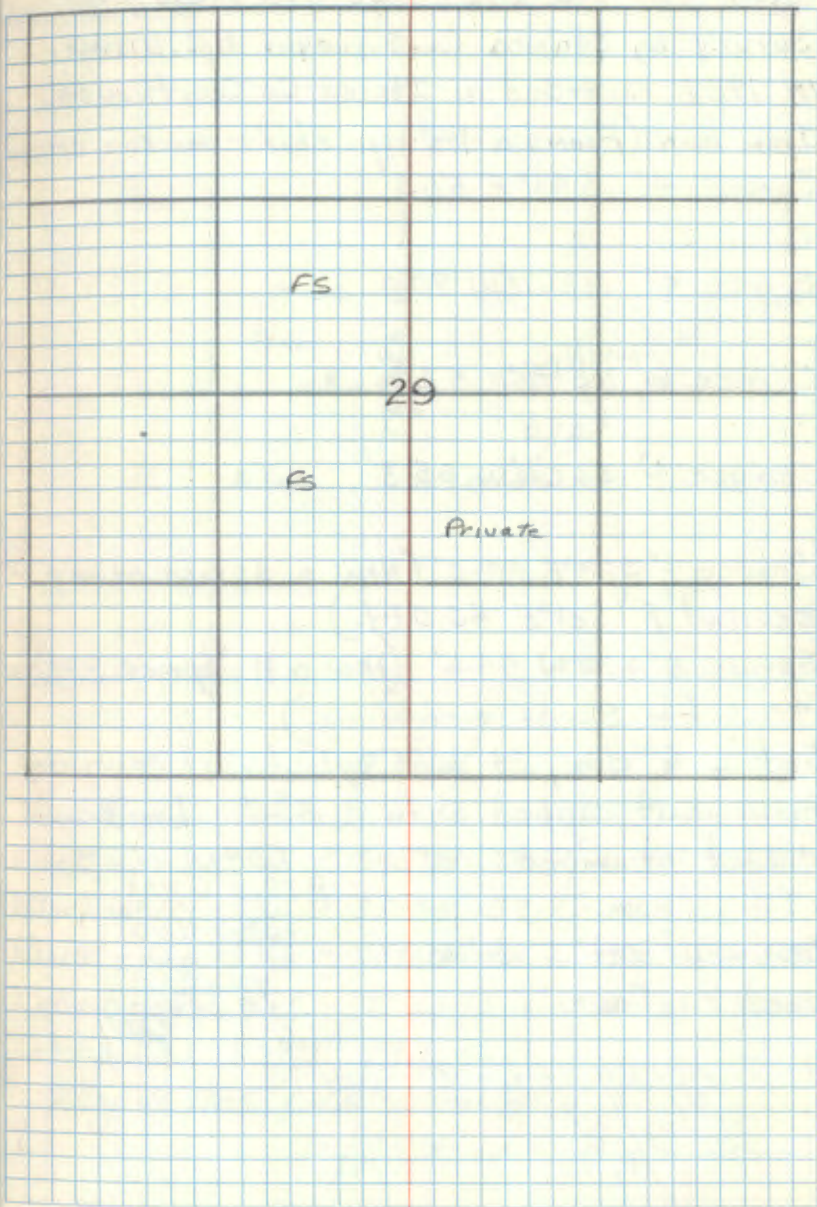
Sec 29

S.M.C. $\frac{1}{4}$ line west shore North Star
Survey by L.W. Johnson 1926 - recorded.

Iron mon.

Cedar 4" S12°W 21.5'

Tam. 4" N80°W 12.4'



4 Z-1

Town Cor. 1-6-31-36 T58-59N R26-27W
 Survey by Itasca Co. Surveyor P.C. Warner
 in 1929 recorded in Itasca Co. Courthouse.
 Iron man. (Found a 1 1/2" iron shaft marking corner)
 Spruce 4" S41°E 51.5'

Spruce 4" N26 1/2°W 90.0'

Spruce 6" N51 3/4°E 42.8'

Spruce 4" S62 1/2°W 65.3'

Spruce 4" S28°E 60.0' (Now a spruce stump ✓
 scribed "T" S21°E 60.0 Ft.) ✓

Spruce 5" S28°W 44.6' (Now a 11" Spruce S36 1/2°W
 44.6 Ft. Scribe overgrown.)

Set a 6" dia, 24" long cylindrical concrete
 monument capped with a 3" dia bronze
 tablet stamped

T59N
 R27W R26W

S36 1/2°W

S115.6 ✓

T58N

1965

RLS NO 6807

Monument set 5" below
 road surface

Affidavit RHM

T59N

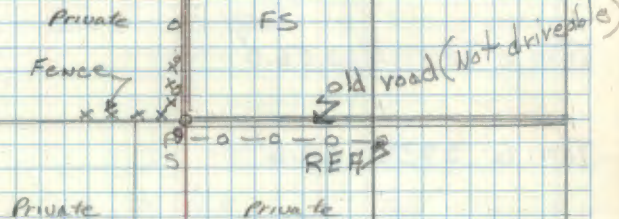
Z-1

R27W

R26W

36

31



T58N

6

New Bearing trees

Black spruce 6" S45°W 33.3' MKD S1 BT ✓

Black spruce 6" S55°E 52.9' MKD S6 BT ✓

Black spruce 6" N23 1/2°E 54.6' MKD S31 BT ✓

Cedar post 4"x4"x72" w/ FS. standard sign 54-4
 attached S3 1/2°E 23.6 Feet

May 11, 1965 by Mr. Donald

Bill Heide

10/20/67

5 V-1

Sec. Cor. 25-30-31-36 T59N R26-27W

Survey by P.G. Warner 1929 - recorded

Iron mon.

Tam. 7" N55°E 41.2'

Tam 5" N47°W 53.7'

Tam 5" S58½°W 56.0'

Tam 6" S42°E 62.6'

10-22-81 K. Whitehorn R. Olson T. Suddendorf

Declination: 4½°E

Ties: County Survey in 1965

Spruce 5" N2°W 153.54'

Found 8" Spruce with scribe visible N01°E 153.54'

REA Pole N82°E 216.35'

Found Telephone Guy pole scribe "B0" at the base

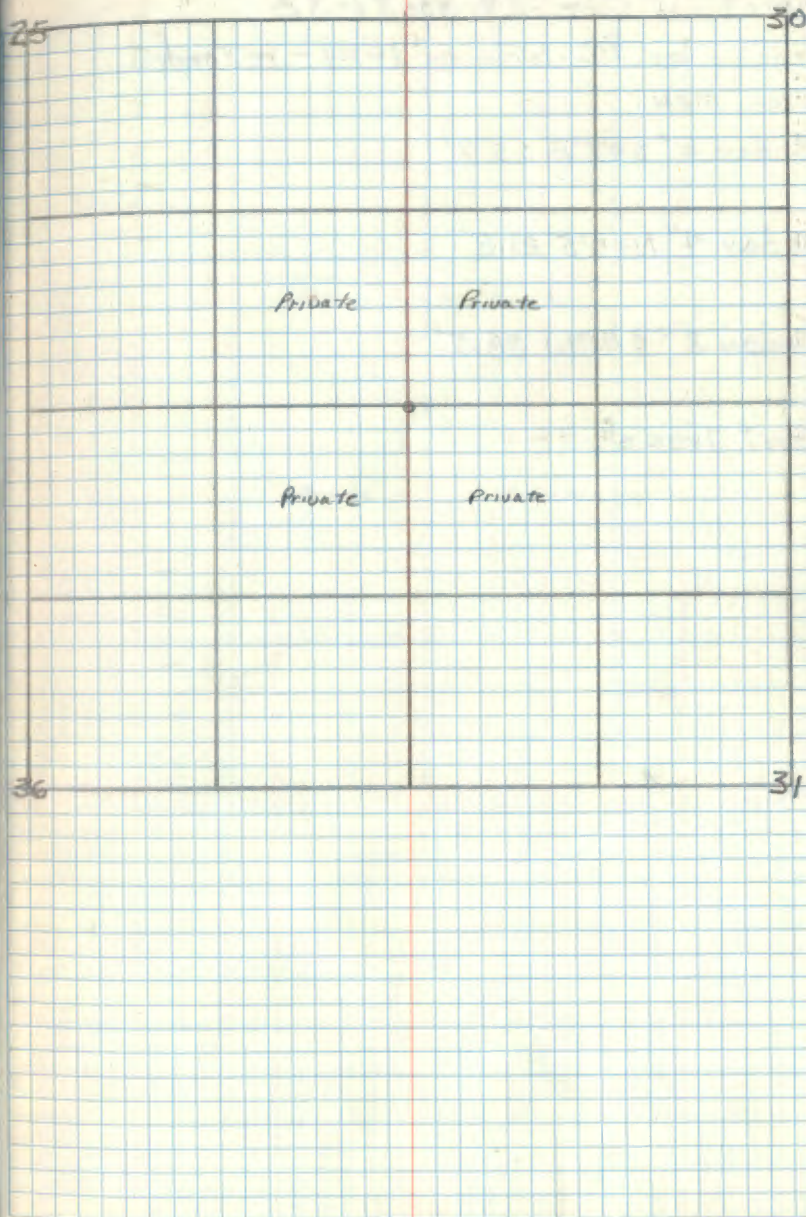
N89°E 216.35'

Monument was found pulled out several years ago
Set 2" x 5" iron pipe with 2½" brass cap

See field Book 2 for T59N R27W. Page 2

BK 1, T59N R27W PP 20

BK 4, T59N R26W PP 8



V-5 Section Cor. 29-30-31-32

Survey by P.C. Warner 1929 - recorded.
Iron MON.

Cedar 6" S 47° E 65.7'

Cedar 4" N 40° E 21.8'

Cedar 3" S 61° W 38.5'

Gov't Trees

CERTIFICATE FILED

30

29

PRIVATE

PRIVATE

PRIVATE

PRIVATE

31

32

Cor. Sections 5-6-31-32 T58-59N R26W
 Survey by P.C. Warner 1929 - recorded
 Iron mon.
 Cedar 8" N 98° E 73.0'

Balsam 6" N 07° W 73.6'

Birch 8" N 79° W 97.0'

See page 4 Book 4

CERTIFICATE FILED

31

32

FS

PRIVATE



FS

PRIVATE

5

5

8 Z-3

Quarter Corner 6-31 T58-59N R26W

Survey by P.G. Warner 1929 - recorded.

Iron mon. (Found a 1/4" iron pipe marking corner)

Poplar 10" S76°W 74.0' (this point is in REA clearing)

Poplar 6" N83 1/2°E 67.0' (this point is in old roadway.)

This corner was found by chaining East from the west 1/4 between 31-6 1314.6 ft as per call of plat.

Set a 6" diameter, 24" long cylindrical concrete monument capped with a 3" diameter bronze tablet stamped:-

T59NR26W

Monument set 5" below road surface

1 S 31
4 S 6

T58N

R2S 1965 6807

Balm-of-Gilead 5" S45 1/2°W 67.3' MKD 1/4 S 6 BT

Balsam 7" N43°W 54.7 Ft. MKD 1/4 S 31 BT

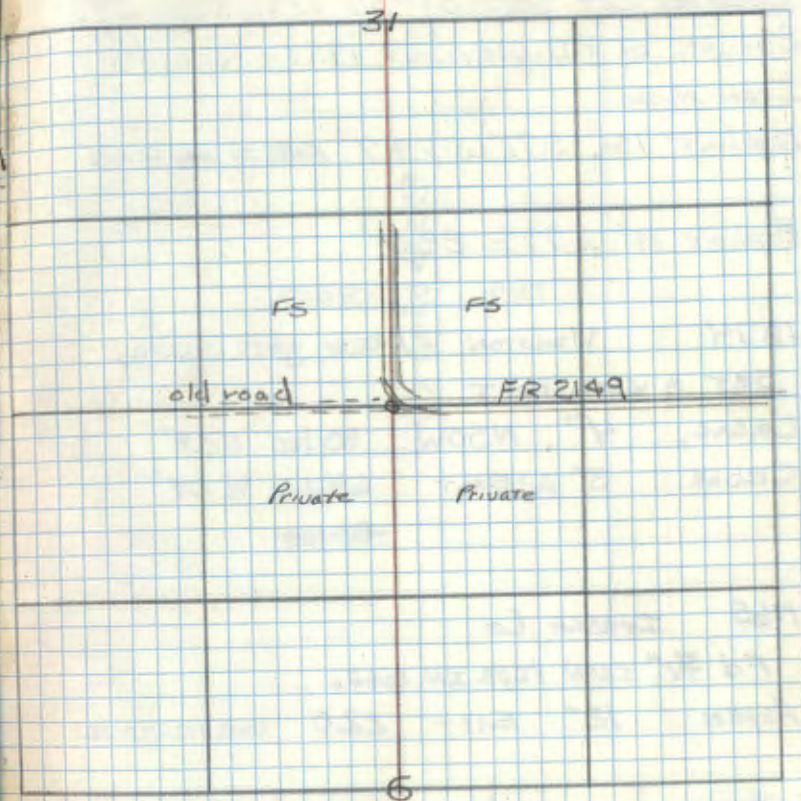
Cedar post 4"x4"x72" w/FS. standard sign ✓

54-9 attached due North 18.2 Ft.

May 7, 1965 Robert McDonald
Bill Heide

Affidavit RHM

Z-3

Robert McDonald
10/20/67

9 X-1

Quarter Cor. Sec. 31-36 T59N R26-27W
Survey by P.C. Warner 1929 - recorded
Iron mon.

Poplar 14" S 71° W 74.7' FALLS IN HAY FIELD

Poplar 14" S 77° E 88.2'

1874 WINSTON - ORIG GOUT SURVEY.

SET A WOOD POST

CEDAR 4" N50W 80 lks 52.8'

CEDAR 3" EAST 64 lks 42.24'

~~80 lks~~

1965 ITASCA CO

Fd 3/4" IRON PIPE IN ROAD.

ASPEN 12" EAST 22.0 NOEVIAROCK

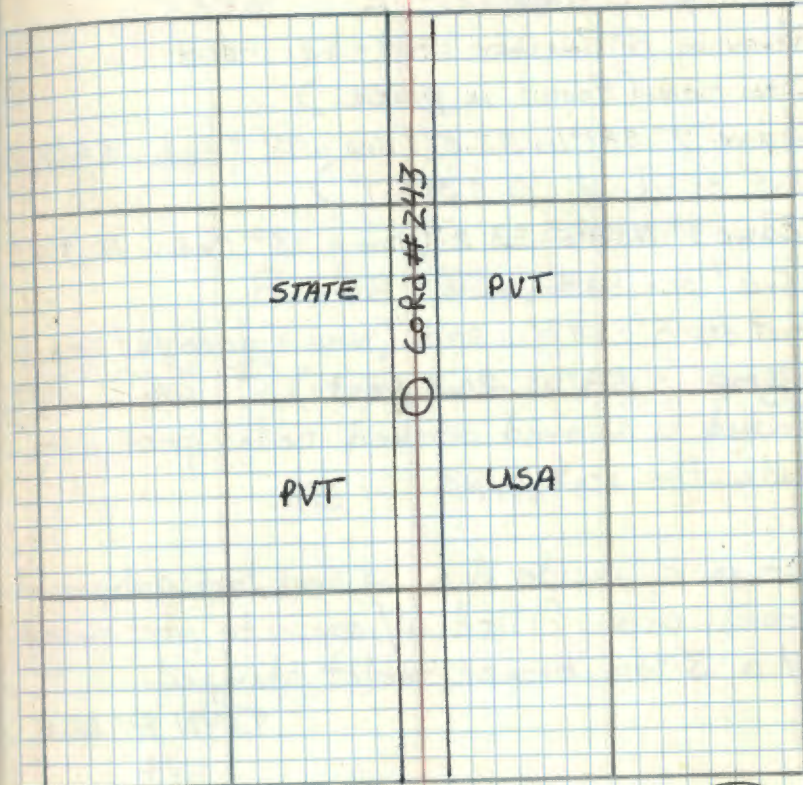
CO MONUMENT WEST 21.0

1987 R MAIN

Fd A 3/4" X 0.8' IRON PIPE WITH THE TOP BROKEN
OFF. BASE OF PIPE IS 0.8' BELOW THE ROAD SURFACE.

Found 1965 CO MONUMENT WITNESSING IRON BELOW ROAD
SURFACE, AND PULLED CORRECT DISTANCE. SET A 2"

X 2' GALVANIZED STEEL PIPE WITH 3" BRASS CAP, AND
MAGNETIZED PLASTIC BREAKAWAY BASE. MONUMENT



1987 CONT

IS 0.8" BELOW ROAD SURFACE. MON STAMPED.

WITNESSED BY

CO MONUMENT

ASPEN 8" N59W 72.8 TO NAIL

BALSAM 4" EAST 25.3 TO NAIL SCRIBED
(X) BT

Robert R. Main 8/11/87

T59N
R27W R26W
1/4
536+531
1987

10 X-5

Quarter Cor. Sec. 31-32

Survey by P.C. Warner 1929 - recorded.

Iron mon. (Found in place.)

Cedar 7" S81°W 33.5' (Now a 12" cedar S86½W 33.5' scribed ¼ S31 BT)

Cedar 9" N58°E 25.2' (Now a 13" Cedar N67½E 25.2' scribed ¼ S32 BT)

Govt stp 8" S69½W 20.5' (Now a decayed cedar stump S58°W 20.5' Feet.) (Scribe inside with)

Found a squared scribed cedar post alongside the iron pipe

Set a 2" inside dia, 5 foot long galvanized steel pipe filled w/ concrete and capped w/ a 3" dia. bronze tablet stamped: -

T59N, R26W

¼

S31 | S32

1965

RLS NO 6807

The two Co. Cedar Bts are in good condition on these I placed BT shields.

Cedar 13" N66°W 81.6 Ft MKD ¼ S31 BT

Steel sign post 72" long w/ F.S. standard signs 54-2 & 54-4 attached due south

5.7 5-3-65

A McDonald

Bill Heide

Affidavit RHM

CERTIFICATE FILED

T59N

R26W

		Private	Private
31		F.S.	Private
			32

Shields
11/2/67

R9-7150-4 by T. Subdort 1981

11

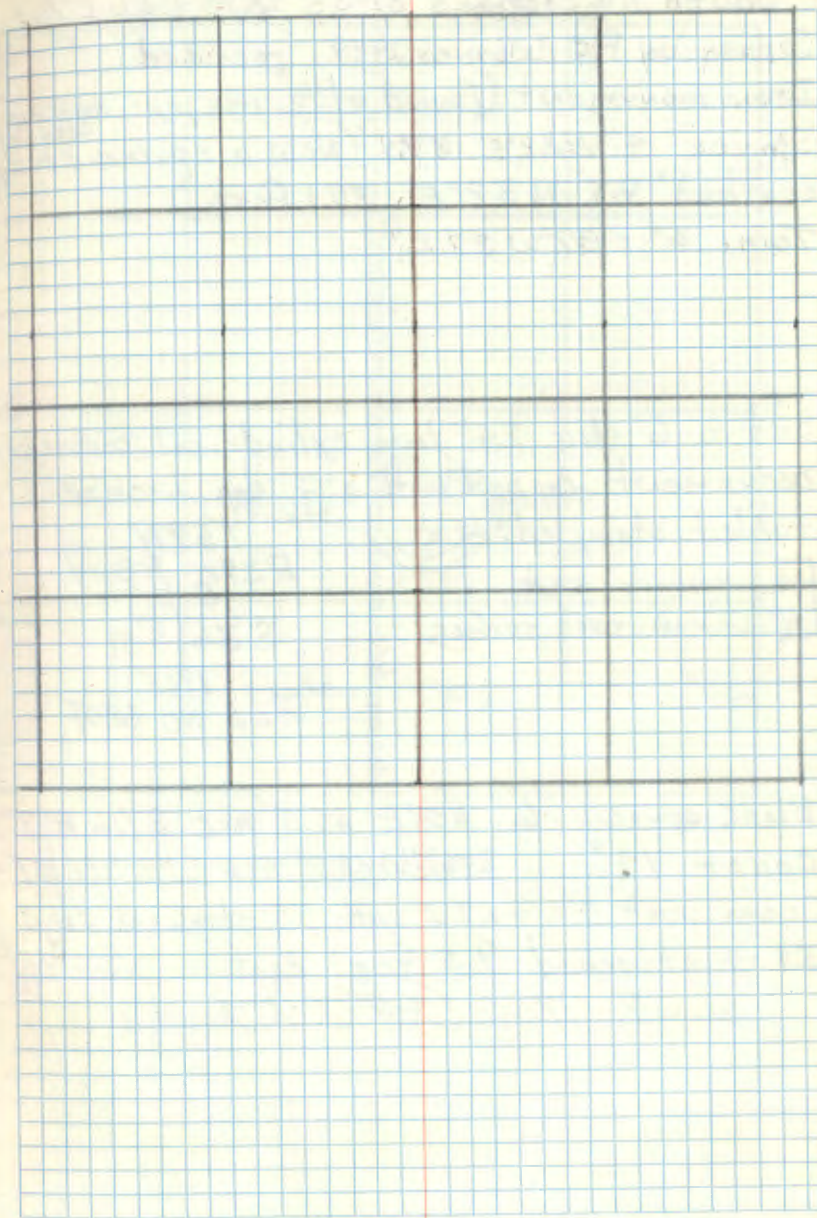
Quarter Cor Sec. 30-31

Survey by P.C. Warner 1929 - recorded

Iron mon.

Cedar 4" N47°E 34.7'

Cedar 8" S36½°E 84.0'



12 Y-1

South 1/16 Sections 31-36 T59N R26-27W

Survey by P.C. Worney 1929 recorded

Iron monument. (Found a 1/2 iron pipe marking)

Spruce 4" N22°E 37.1' (Now a spruce stump
scribed "BT" N32°E 37.1 feet.)

Tam. 6" S87°W 37.2'

Set a 6" dia. 24" long cylindrical concrete
monument capped with a 3" dia. bronze
tablet stamped:-

[Monument set
4" below road surface]

T59N
R27W R26W
S 1/16
S 36 | S 31
1965
RLS NO 6807

Black spruce 6" N38°E 69.5' MKD S 1/16 BT

Cedar 14" S36 1/2°W 68.2' MKD S 1/16 S36 BT

Cedar post 4"x4"x72" with FS standard sign

54-4 attached 9.5 Feet East

June 7, 1965 G.H. McDonald

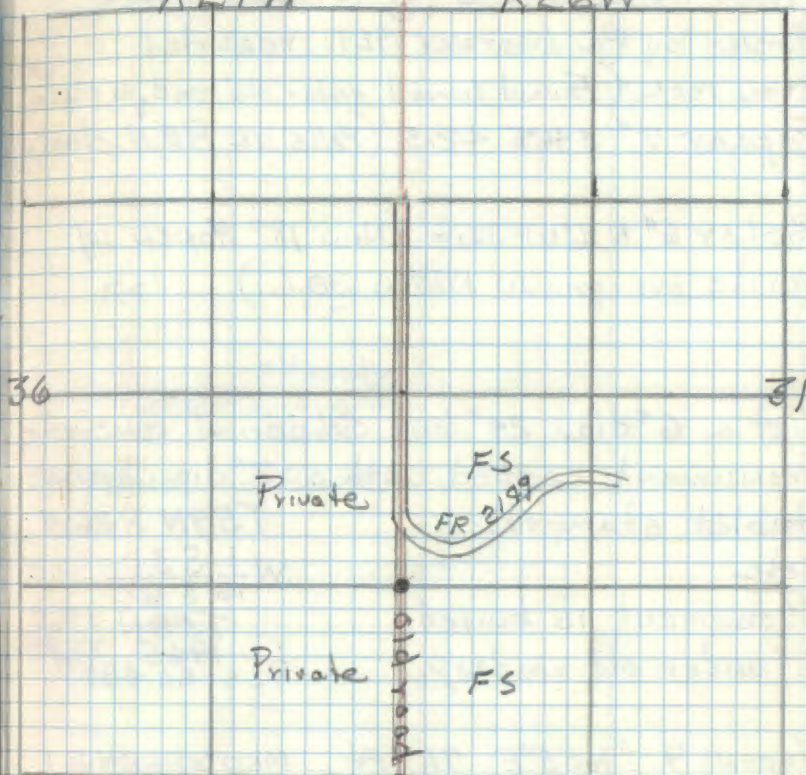
Affidavit RHM

T59N

Y-1

R27W

R26W



Handwritten signature and date: G.H. McDonald 10/20/67

13 Z-2

West 1/16 Section 6-31 T59N R26W

Survey by P.C. Warner 1929 recorded

Iron mon. (Found buried under old road, in place)

Poplar 7" S46°E 42.5' (Falls in REH clearing)

Poplar 6" N16°W 30.6' (New 18" Aspen w/ scribe overgrown N7 1/2°W 30.6.)

Set a 6" dia. 24" long cylindrical concrete monument capped with a 3" dia. bronze tablet stamped:-

T59N R26W

Notes

Monument is buried 6" under old roadway.

W 1/16 S 31
S 6
T58N 1965
1965 T58N
RLS NO 6887

Aspen 9" N55°E 71.7 Ft. MKOW 1/16 S 31 BT ✓

Balsam 7" S33 1/2°E 64.4 Ft. MKOW 1/16 S 6 BT ✓

Cedar post 4"x4"x72" with F.S. standard sign ✓

54-4 attached due North 19.2 Ft.

May 7, 1965 Robert H. M. Donald
Bill Seide

Affidavit RHM

Z-2

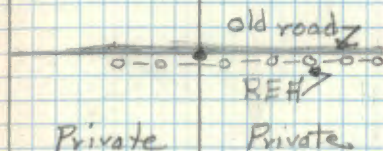
T59N

31

R26W

FS

FS



6
T58N

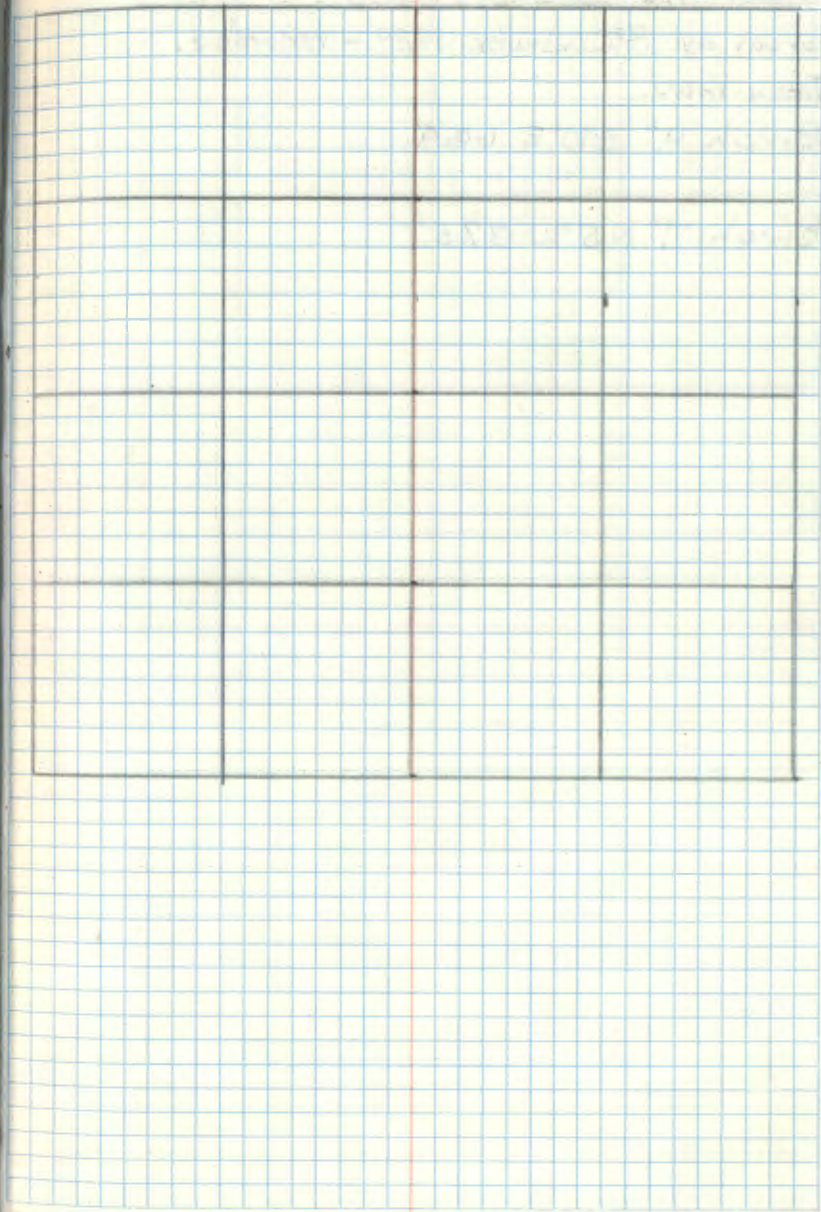
Robert H. M. Donald
1965

14

East 1/16 Sec's 6-31 T58-59N R26W
Survey by P.C. Warner in 1929 recorded
Iron man.

Poplar 7" S10°W 27.0'

Poplar 7" N9°E 30.5'



15

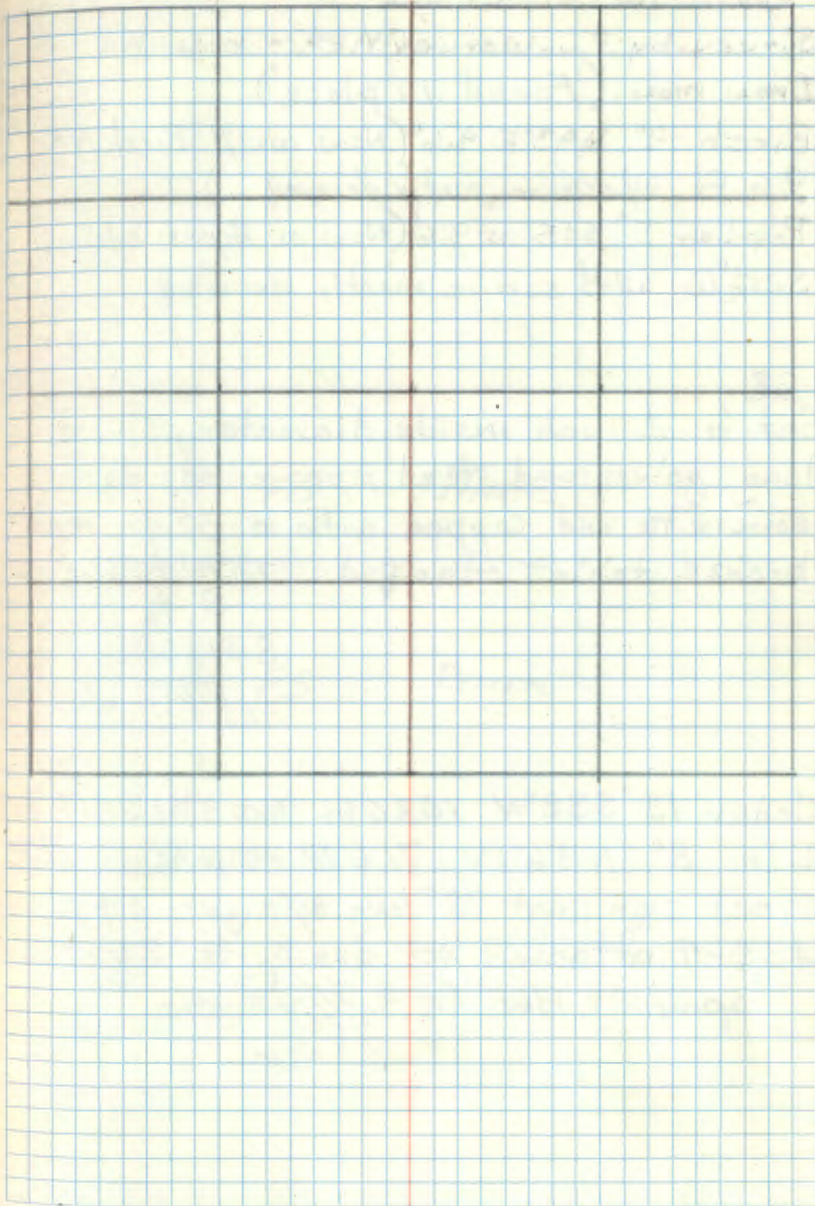
West 1/16 Sections 30-31

Survey by P.C. Warner 1929 - recorded.

Iron mon.

Birch 9" S10°E 60.4'

Birch 7" N5°W 37.5'



16 Y-5

South 1/16 Sec. 31-32

Survey by P.C. Warner 1929 - recorded.

Iron mon. (Found in place)

Birch 9" N43°E 9.6' (Now an 11" Birch N55°E
9.6 Ft. w/ scribe partly decayed.)Poplar 5" S15°W 9.6' (Now an Aspen stump
S25½°W with scribe mostly decayed.)Set a 2 inch inside diameter, 5 foot
long galvanized steel pipe filled with
concrete and capped with a 3" diameter
bronze tablet stampedT39N R26W
S 1/16
S 31 | S 32
1965
RLS No 6807

Cedar 13" S38°W 109.6 Ft MKD S 1/16 S 31 BT

Elm 8" N86°W 71.6 Ft MKD S 1/16 S 31 BT

Steel sign post 72" long w/ signs 54-e

#54-7 attached set due North 5.5'

April 29, 1965 G.H. McDonald

Bullhead

Attestavit RHM

T59N

R26W

Y-5-7

31

32

FS

Private

FS

Private

Bullhead
11/1/67

17 X-3

33.1

Center 1/4 Section 31

Survey by P.C. Warner 1929

Iron man. (Found a 2" iron pipe in place)
B. of G. 7" N29W 6.9' (Now a 2" baln. of G.
N21°W 6.9 feet)

Spruce 5" N42°E 4.4'

Spruce 7" S90°E 6.0' (Now a spruce stump
scribed "BT" S28°E 6.0 FT

Poplar 7" S65°W 12.5' (Now a 1 1/2" Aspen
S71°W 12.5' w/ scribe overgrown.)

Set a 2" inside dia., 5' long galvanized
steel pipe filled w/ concrete and capped
with a 3" dia. bronze tablet stamped

T59N R26W

C 1/4 S31

1965
R.L.S. NO 6807

Spruce 5" S77°E 13.3 FT MKR C 1/4 S31

Cedar 10" S32°E 33.1 FT MKR C 1/4 S31 BT

Steel sign post 72" long w/ F.S. standard
signs 54-2 & 54-4 attached due west
3.8 Ft.

May 4, 1965
R.H. McDonald
Bill Ludo

Affidavit

X-3

1732.7'	1364.2'	997.9	332.5	1329.9'
1365.3	1353.8	1344.7'	1336.0'	1327.3'
1751.4'	1351.8	991.5	330.5	1322.0
1365.3	1353.8	1344.7	1336.0'	1327.3'
1770.1'	1339.4	1314.1	1314.1	
1365.3	1356.2	1348.7'	1336.5'	1324.4'
1788.8'	1327.0	1315.3	1315.3	
1365.3	1356.2	1348.7'	1336.5'	1324.4'
1807.5	1314.6	1316.5	1316.5	

To bring this corner to standard I
cut new BT²

Cedar 10" N52E 58.28' c/s 31 BT

Cedar 10" S5°W 48.15' c/s 31 BT

Steel post 8' Long East 9.3'
w/ signs 54-2 & 54-4

[Signature]
10/30/65

3/17/81
Ronald D. Olson

R9-7150-4 by Olson 3/17/81

18 W-3

Center North $\frac{1}{16}$ Section 31

Survey by P.C. Warner 1929 - recorded
Iron mon. (Found a Iron bolt marking corner)
Poplar 6" S63°W 7.8' (Now a 11" Aspen
stub S70°W 7.8 feet scribe overgrown.)
Poplar 9" N15°E 7.5' (Now rotten stp)

Set a 2" inside diameter, 5 foot long
galvanized steel pipe filled with concrete
and capped with a 3" dia. bronze tablet
stamped:-

T59N R26W

N $\frac{1}{16}$ S31 ✓

1965
RLS NO 6807

Cedar 9" N45°W 79.2' MKD CN $\frac{1}{16}$ S31 BT ✓

Black Hsh 7" S86°W 54.3' MKD CN $\frac{1}{16}$ S31 BT ✓

Steel sign post 72" long with F.S. standard
signs 54-2 & 54-4 attached set North 2.0' ✓

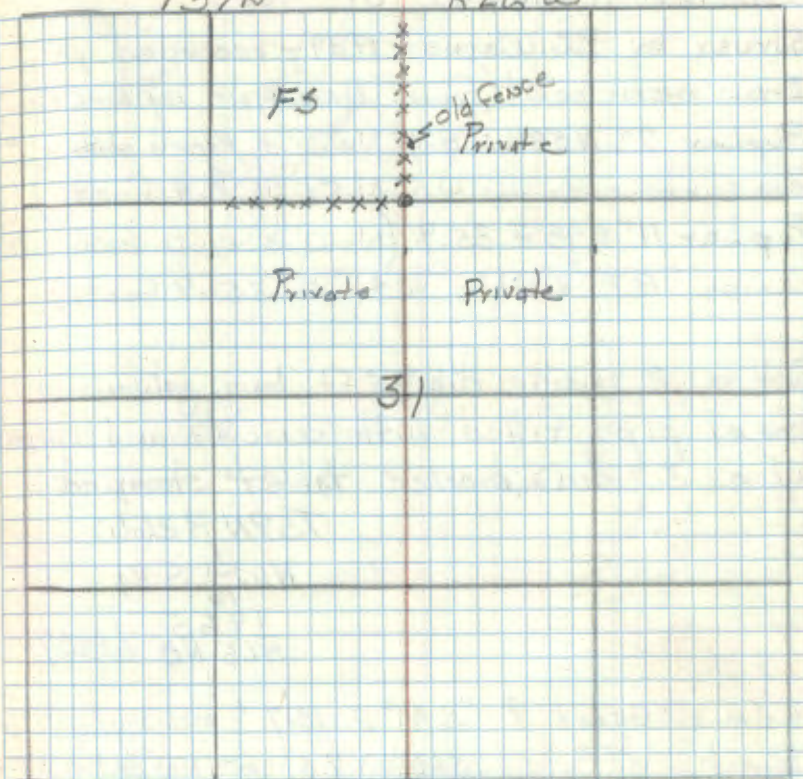
June 23, 1965 (A. Mc Donald)

Affidavit RHM

W-3

T59N

R26W



An old fence line corners at this
point fence bears North & West.

[Signature]
11/3/67

19 W-2

North West 1/4 Sec 31

Survey by P.C. Warner 1929 - recorded plat.
 Iron monument (Found iron pipe marking Cor)
 Paphar 7" N59°W 8.4' (Now a Aspen stub w/
 few scribe cuts visible N51°W 8.4 Feet.)
 Paphar 11" S48°E 35.9' (Now a blow down w/
 scribe "BT" visible S41°E 35.9 Feet.)

Set a 2" inside dia. 5 ft. long galvanized
 steel pipe filled with concrete and capped
 w/ a 3" dia. bronze tablet stamped:

T59N R26W

NW 1/4 S31

1965
PLS NO 6807

Balm of Gilead 9" S41°E 10.7' MKD NW 1/4 S31 BT

Birch 5" S60°W 7.6' MKD NW 1/4 S31 BT

Steel sign post 72" long w/ FS. standard
 signs 54-2 & 54-4 attached set North 2.5'

June 22, 1965 (J. McDonald)

Affidavit RHM

W-2

T59N

R26W



31

Fence lines bear East West & North -
 very old and partly down.

atlas
 10/20/67

20 X-2

Center West 1/16 Section 31

Survey by P.C. Warner 1929 - recorded Plat
Iron mon. (Found in place)

* Poplar 7" S16°E 33.2' (Now a 14" Aspen
w/ FS. Paster dated 1936 & blaze facing corner)

B. of G. 10" N43°E 59.9' (Now a 17" Bals. of
G. lead N50½°E with part of scribe visible)

* Poplar bears S7°E both trees are at
record distance.

Set a 6" dia. 5 foot long cylindrical concrete
monument with a 3 inch dia. bronze tablet
stamped:

T59N R26W
C W 1/2 C ✓
S 31
1965
PLS NO 6807

Balsam 6" S10½°E 22.7' MKD WC 1/16 BT ✓

Aspen 10" N54°E 6.6' MKD CW 1/16 BT ✓

Steel sign post 72" long with standard
FS. signs 54-2 & 54-4 attached set due
West 3.8 feet.

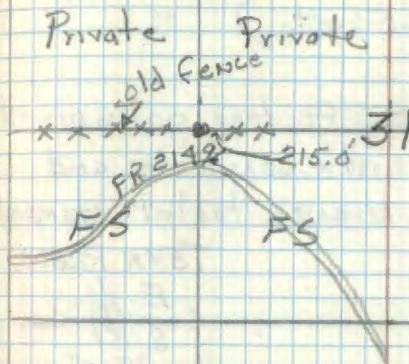
April 28, 1965 *A.H. McDonald*

W. J. Olson
10/30/67

Hedavit RHM

T59N

R26W



Set a ved topped 4"x4"x72" cedar post
on North side of FR# 2149 from which
corner bears North 215 feet.

To bring this corner to standard I cut new BT

Aspen 4" S27W 12.00' x BT.

Aspen 6" N75W 10.28' CW 1/16 531 BT.

steel post 8" long East 9.4'

RR-7150-4 by Olson

3/17/81
Ronald Olson

21 X-4

Center East 1/16 Section 31

Survey by P.C. Warner 1929 - recorded plat

Iron mon. (Found a 1" dia. iron pipe in place.)

Spruce 6" East 20.7 (Now a 10" spruce w/ scrib
overgrown S 81° E 20.7 Feet.) ✓

Spruce 6" N 21° E 6.5 (Now a 8" spruce scribed
1/16 #8 BT N 34 1/2° E 6.5 Feet.) ✓

Set a 2" inside dia. 5 ft. long galvanized
steel pipe filled with concrete and
capped w/ a 3" dia. bronze tablet stamped

T59N R26W

✓ E 1/16 C

S 31

1965

R.L.S. NO. 6867

Spruce 11" S 68 1/2° E 32.9 Ft. MKD CE 1/16 S 31 B

Black Ash 7" N 23° W 58.3 Ft. MKD CE 1/16 BT

Steel sign post 72" long w/ F.S. standard

signs 54-2 & 54-4 attached set due

West 3.2 ft.

May 4, 1965 Robert H. McDonald

Bill Leide

set a steel post 8' long East 4.6'

w 5-9-2 54-2 & 54-9

3/17/81 Ronald Olson

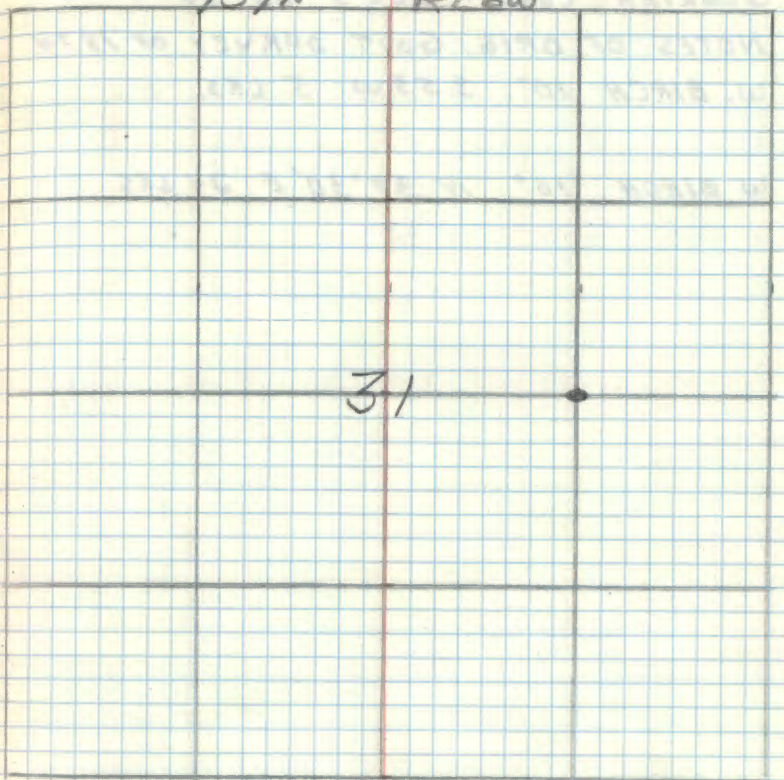
R9-7150-4 by Olson

Affidavit RHM

X-4

T59N

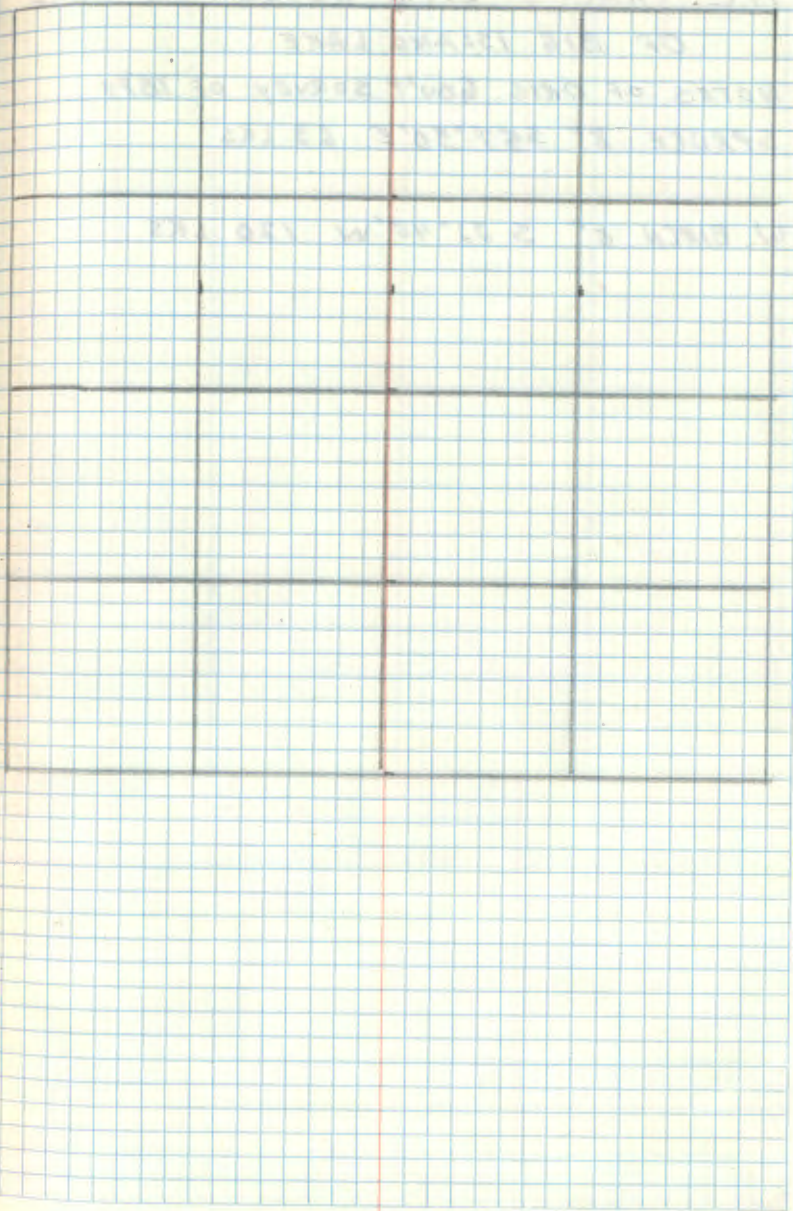
R26W



[Handwritten signature]
11/2/67

QUARTER CORN. SEC'S 25-36
NOTES OF ORIG. GOV'T SURVEY OF 1874
W. BIRCH 10° S 53 W .5 LKS.

W BIRCH 10° N 39° 30' E 24 LKS

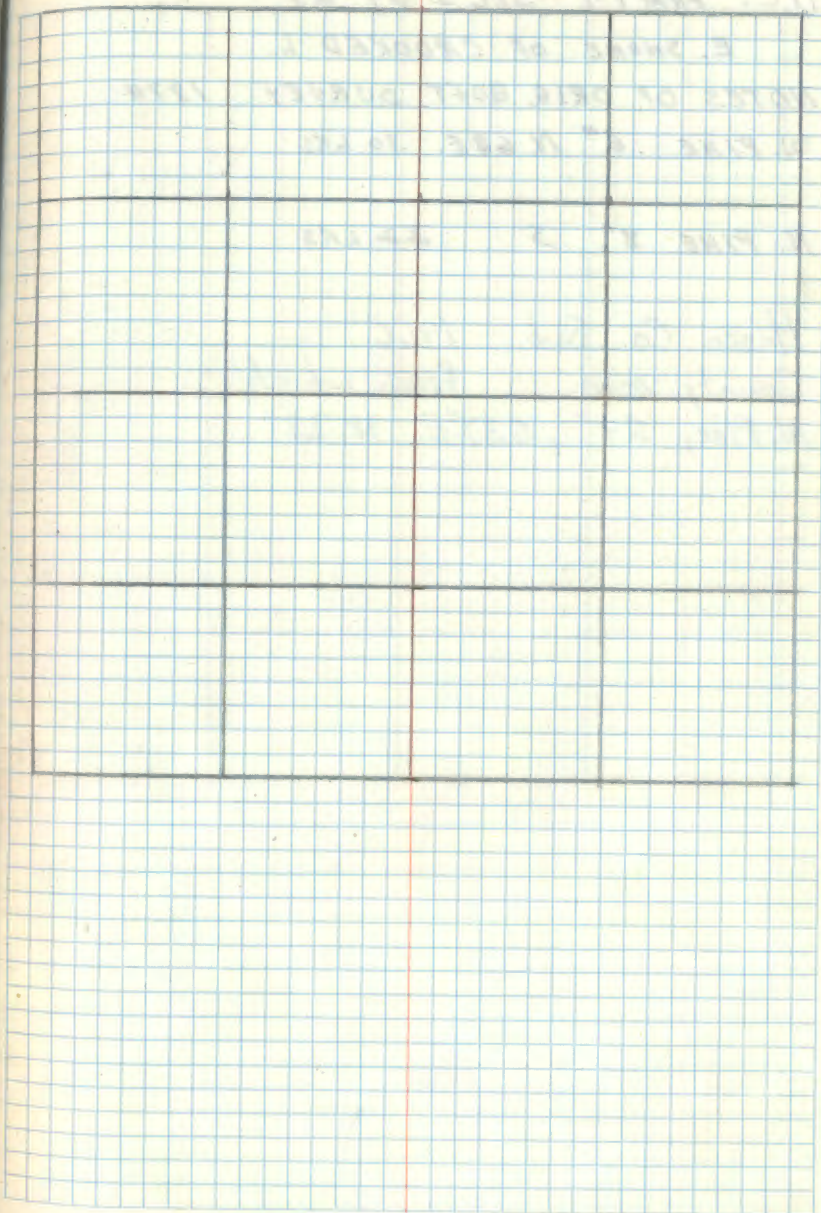


M.C. FRACT'LO SEC'S 25-26 SO. SHORE
OF BIG ISLAND LAKE

NOTES OF ORIG. GOV'T SURVEY OF 1874

SPRUCE 8" S 57°30'E 63 LKS

W. BIRCH 8" S 22°45'W 120 LKS



24 R-24/25

M.C. FRACT'L SEC'S 24-25

E. SHORE OF CROOKED L.

NOTES OF ORIG. GOVT SURVEY 1874

W. PINE 6" N. 68E. 30 LKS

N. PINE 8" S 22 LKS

Itasca Co. Sub. 1966

County mon. From which:

N. Pine, 24" , S37°E, 18.32'

25 R-22/23

M.C. FRACT'L SEC'S 24-25

W. SHORE OF CROOKED I.

NOTES OF ORIG. GOV'T SURVEY 1874

N. PINE 7" N5W 42 LKS

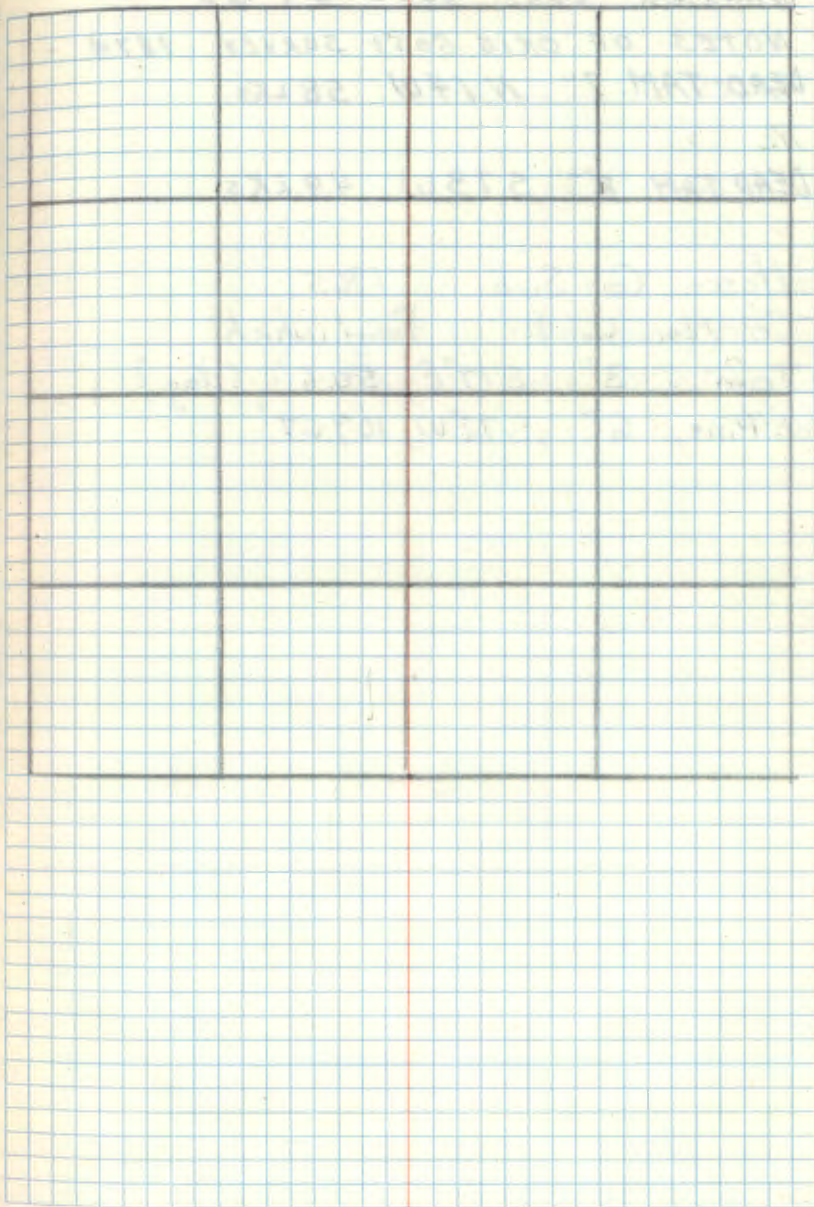
1

BIRCH 4" S46W 68 LKS

Itasca Co. Sub. 1966

Co. Monument from which:

Birch, 12", N72°W, 26.02'



QUARTER COR. SEC'S 24-25
 NOTES OF ORIG GOVT SURVEY 1874
 DEAD TAM. 7" N14W 58 LKs

//
 DEAD TAM. 8" S73W 49 LKs

Hasca Co. Sub. 1965
 Co. Monument From which:
 Tam., 3", S17°E, 50.6' (tag)
 W. Pine, 6", S72°W, 109.07'

27 R-22/23

M.C. FRACT'L SEC'S 24-25

EAST SHORE OF BAY OF BIG ISLAND LAKE

NOTES OF ORIG. GOV'T. SURVEY 1874

W. PINE 10" N47E 17 LKS

W. PINE 7" S 14W 25 LKS

Itasca Co. Sub 1966

County Mo. from which:

Birch, 10", S69°E, 8.82'

W. Pine, 18", N50°E, 13.53'

Itasca Co. July, 1984

County Mo. from which:

"x" rock, 2'x2', S55°E, 7.44'

W. Pine, 22", S05E, 17.33'

M.C. FRACT'L SEC'S 24-25

W. SHORE OF BAY OF BIG ISLAND L.

NOTES OF ORIG. GOV'T SURVEY 1874

W. PINE 10" S 54W 9 LKS

W.

N. PINE 8" N 64W 15 LKS

Itasca Co. Sub. 1966

County Mo. from which:

Birch, 5", S34°W, 11.77'

Birch, 6", North, 11.00'

Itasca Co. July, 1984

"x" rock, 1' x 1½', N34°W, 5.62'

"x" rock, 2' x 2', S 40°W, 11.40'

29 P-21

QUARTER CORN. SEC'S 23-24
 NOTES OF ORIG. GOVT SURVEY 1874
 SPRUCE 10" N 60 E 14 LKS

BALSAM 4" N 25 W 30 LKS

Corner reestablished by Itasca Co
 surveyor Jack Shannon in 1962

Found a Alum. capped iron pipe $1\frac{3}{4}$ " dia.
 marking corner - stamped 45231524
 $739N$
 $1726W$

Balsam 7" S 66° W 10.73 feet (Now a blow-
 down 7" balsam w/ scribe visible S 72° W 10.73')

Balsam 5" S 17° E 13.38 feet (Now a 6"

Balsam S 11° E 13.38 Ft

I marked new: -

SNAG Birch 8" N 54 $\frac{1}{2}$ ° E 21.3 Ft MKD 1/4 524 BT

CUT STUMP Birch 7" N 47° W 36.6 Ft MKD 1/4 523 BT

Steel sign post 72" long w/ FS standard signs

54-2 & 54-9 attached set East 3.1 Ft.

June 11, 1965 G. H. McDonald

Itasca Co. July, 1984

" x" rock, 1' x 1', S 52° E, 22.15' OK

Spruce, 14", S 76° W, 55.37' OK

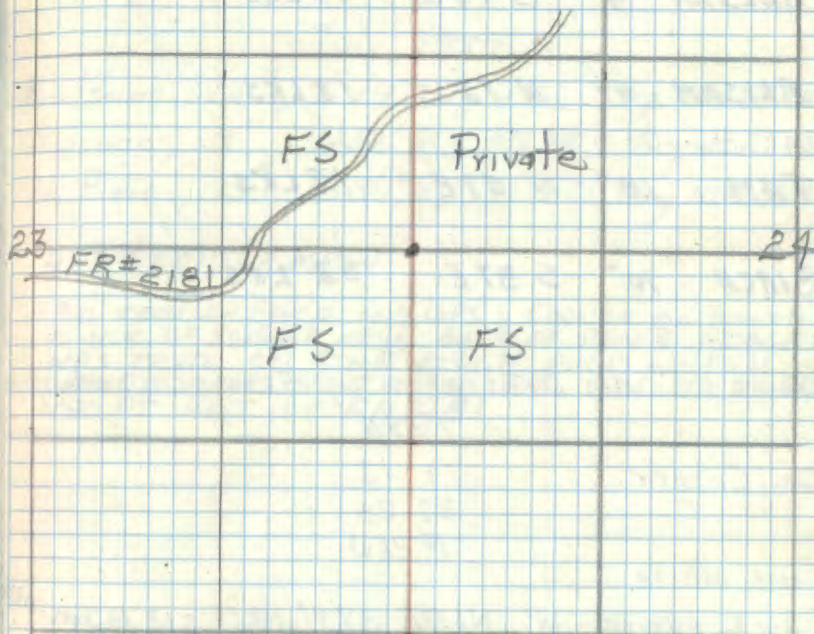
W. Pine, 28", East, 68.73' NOW TALL SNAG
 SCRIBE VISIBLE

Affidavit RHM

P-21 - W 02

4-29-2010 R. MAIN

FD IRON PIPE AND GPS CORNER IN YOUNG
 ASPEN



a brushed line runs North to road

11-7-87 James E. Johnson
 Check OK

30 N-21

SECTION COR. 13-14-23-24

2 CHS. INTO TAM. MARSH

NOTES OF ORIG. GOVT SURVEY 1874

BALSAM 4" S 75W 43 LKS

BALSAM 4" N 72W 18 LKS

TAM. 10" N 57E 18 LKS

BIRCH 10" S 37E 32 LKS

Found 2" dia. iron pipe w/ Alum. cap stamped

T59N

Co. Corner 14 13

23 24

R26W

From which

Black spruce 10" N 65°E 37.9' MKD S13 BT WINDFALL

Black spruce 11" S 68°E 31.0' MKDS over ~~GONE~~

Red pine stump 11" S 4°W 55.0' 2 scribe ~~GONE~~ visible

Aspen 10" N 79°W 49.6' MKD S19 BT GONE

10-19-69 R.H. McDonald

Set steel sign post 72" long w/ sign 54-4

attached due North 3.1 feet.

Itasca Co. Aug., 1965

B. of G., 7", S 69°W, 21.48' GONE

Aspen, 9", N 85°W, 17.98' 12' SNAG 12' TALL

July, 1984

Balsam, 12", S 44°W, 7.60' tag NOW 10' SNAG

Spruce, 9", N 53°E, 34.88' tag WINDFALL

N. Pine, 15", S 34°E, 71.37' tag NOW 16"

4-29-2010 R.M.F.N

FD IRON IN PLACE AND GPS. CORNER ON SOUTH
EDGE OF SWAMP NEAR BASE OF PINE RIDGE.
WAS TRAIL ON PINE RIDGE FROM WHICH
CORNER BEARS NORTH 100' FT. CORNER IS ALSO
450 FT EAST OF FR 2181

M.C. FRACT'L SEC'S 13-24

W. SHORE OF THREE ISLAND L.

NOTES OF ORIG. GOVT. SURVEY 1874

DEAD TAM. 6" N42W 58 LKS

DEAD TAM. 10" S 57E 56 LKS

Itasca Co. Sub. 1965

County Monument 15' from waters
edge + 100' ± N. of small cabin
from which:

B. of G., 5", S25°E, 19.31'

Birch, 6", S54°W, 27.76'

Itasca Co. July, 1984

"x" rock, 4'x6', S12°W, 37.26'

"x" rock, 3'x3', N38°W, 11.07'

QUARTER COR. SEC. 5 13-24
 NOTES OF ORIG. GOVT SURVEY 1874
 BALSAM 6" S65W 12 LKS

BIRCH 10" N58W 12 LKS

Itasca Co. Sub. Aug., 1965
 County Mo. 100'± west of road
 from which:

Birch, 6" , S75°W, 9.68' DEAD ON TOP
 Birch, 8" , N82°E, 2.80' 10' TALL SNAG

Itasca Co. July, 1984
 New BT's

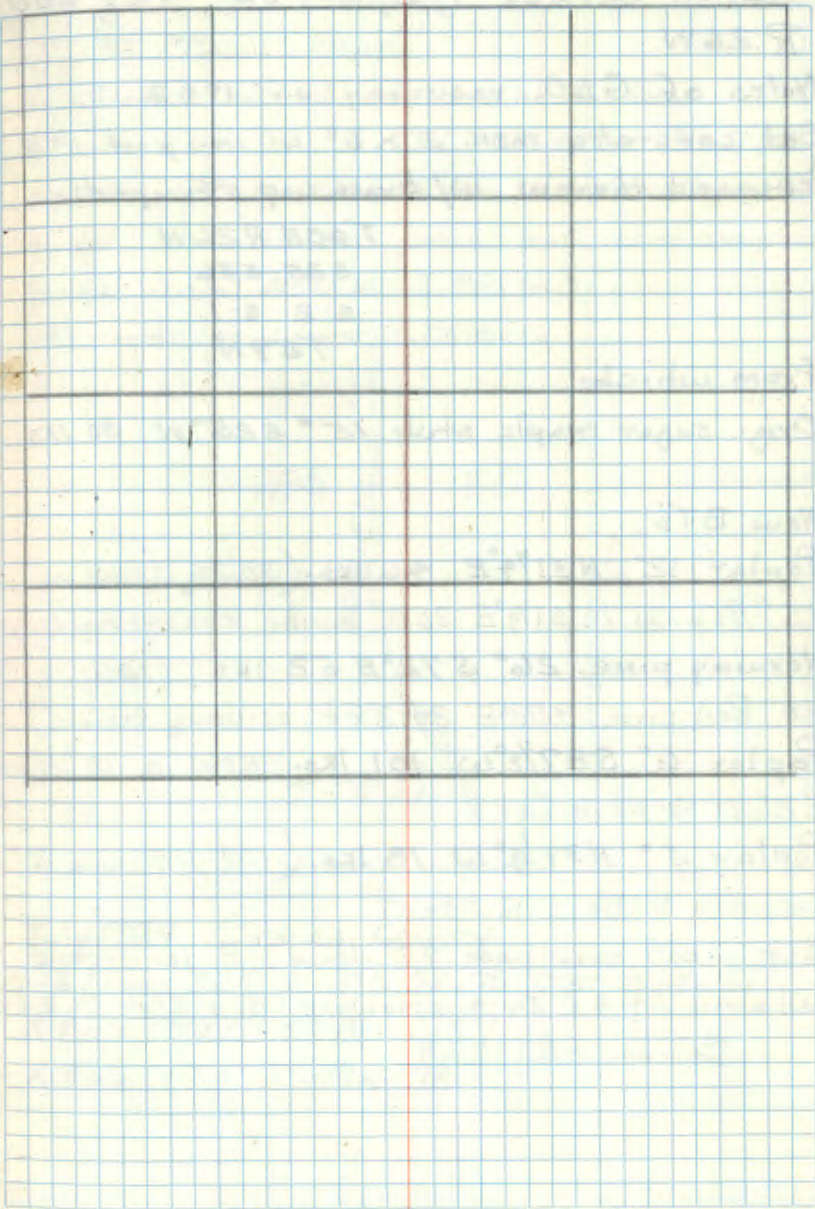
"X" rock, 2'x2' , S75°E, 7.77' OK
 "X" rock, 2'x2' , S15°W, 9.95' OK
 "X" rock, 2'x2' , N67°W, 4.36' OK

4-29-2010 R. MAIN

FD IRON IN PLACE AND GPS

QUARTER COR SEC'S 13-14
NOTES OF ORIG QUIT SURVEY 1874
W. BIRCH 12" S 82 E 18 LKS

POPLAR 6" S 77 W 16 LKS



34 A-21

Section Corner 1, 2, 35, 36 T59, 60N
R26W

Notes of G.L.O. resurvey of 1942

Set concrete MON. 2' x 6" w/ iron post 1" ϕ
encased therein w/ brass cap stamped:-T60N R26W
S35 S36
S2 S1
T59N

From which.

Orig. sugar maple stub 15" S25°W 30 Iks

New BT's

Poplar 12" N31¼°E 46 Iks. (30.36') (Now a
15" Aspen N31¼°E 30.3' scribe overgrown)Norway pine 26" S72°E 52 Iks (Now a
30" Red pine S72°E 34.3 ft scribing visible)Poplar 6" S87½°W 101 Iks. Now a 12" Aspen
S87½°W 66.6 feetPoplar 5" N39¼°W 18 Iks. (11.88') Now a 8"
aspen N39¼°W 12.0 feetSet steel sign post 72" long 2" IN ground
w/ signs 54-2 & 54-7 attached due East 7.2 Ft.

October 28, 1964

Affidavit RHM

A-21

35

T60N

36

11/1/94 R. MAIN L. KEARSE.

FD MONUMENT IN GOOD CONDITION UP TO THESE.

R. PINE 32" S72°E 34.32 Ft to SPK MKD S1 BT

ASPEN 21½" N31¼°E 30.36 GLO SCRIBE OVERGROWN

ASPEN 14" S87½°W 66.6 GLO SCRIBE OVERGROWN

ASPEN WINDFALL N39¼°W 11.88 GLO

8 FT STEEL SIGN POST 2.05 NORTH

F.S.

F.S.

1818 BT

T59N

11-30-67 James Johnson
Checked OK

July 1984 ITASCA COUNTY

1942 R. PINE 32" S72°E 32.75 DIST TO NEW BT

X ROCK 2' X 2' S37E 20.37

X ROCK 1' X 1' S47W 18.29

35 A-17

Section Corner Ses's 2-3-34-35 T59-60N
R26W

Orig Gov't survey notes of 1874

White cedar 8" N^{70°}40'W 30 lks. (19.8')

White cedar 7" S10°W 10 lks. (6.6')

White cedar 6" S75°E 12 lks. (7.92')

White cedar 8" N65°E 50 lks (33.0')

Found corner to be marked by a fallen
cedar post and 3 F.S. location posters on
a Spruce 9" S16°E 40.7 date 1935

Balsam 10" N 6°W 6.0' date 1964

Balsam 6" N 60°E 9.0'

Fallen 8" Red pine N81°E 13.0' date 1935

October 28, 1964 *W. J. Small*

July 1984 ITASCA COUNTY

COUNTY IRON 350 FT NORTH OF TRAIL NORTH

EAST CORNER OF CEDAR SWAMP ON HIGHGROUND

CEDAR 7" S37°E 24.84

X ROCK 1/2 X 1/2 S17°W 4.21

X ROCK 1' X 1/2 N56°W 17.05 FLUSH w/ground

34

T60N R26W

35

3

11/2/94 RMAEN KRAUSE
Ed County IRON IN PLACE UP 10.3 FT MKD

T60N
312
34135
T59N
R26W

COUNTY CEDAR 8" S 29°E 25.15 FT TO Spk MKD 52 BT

CEDAR 9" S 7°W 17.40 FT TO Spk MKD: T59 R26 S2
BT Should BE S3

NEW CEDAR 14" S 49°W 44.15 FT TO Spk MKD: S3 BT

8 FT STEEL SIGN POST 3.45 FT NORTH

NOTE: COUNTY IRON STAMPED WRONG

36 C-17

Quarter corner Sect's 2-3

Notes of orig. govt survey of 1874

Cedar 8" N 25° W 28.1ks (18.98')

Cedar 7" S 60° E 27.1ks. (17.82')

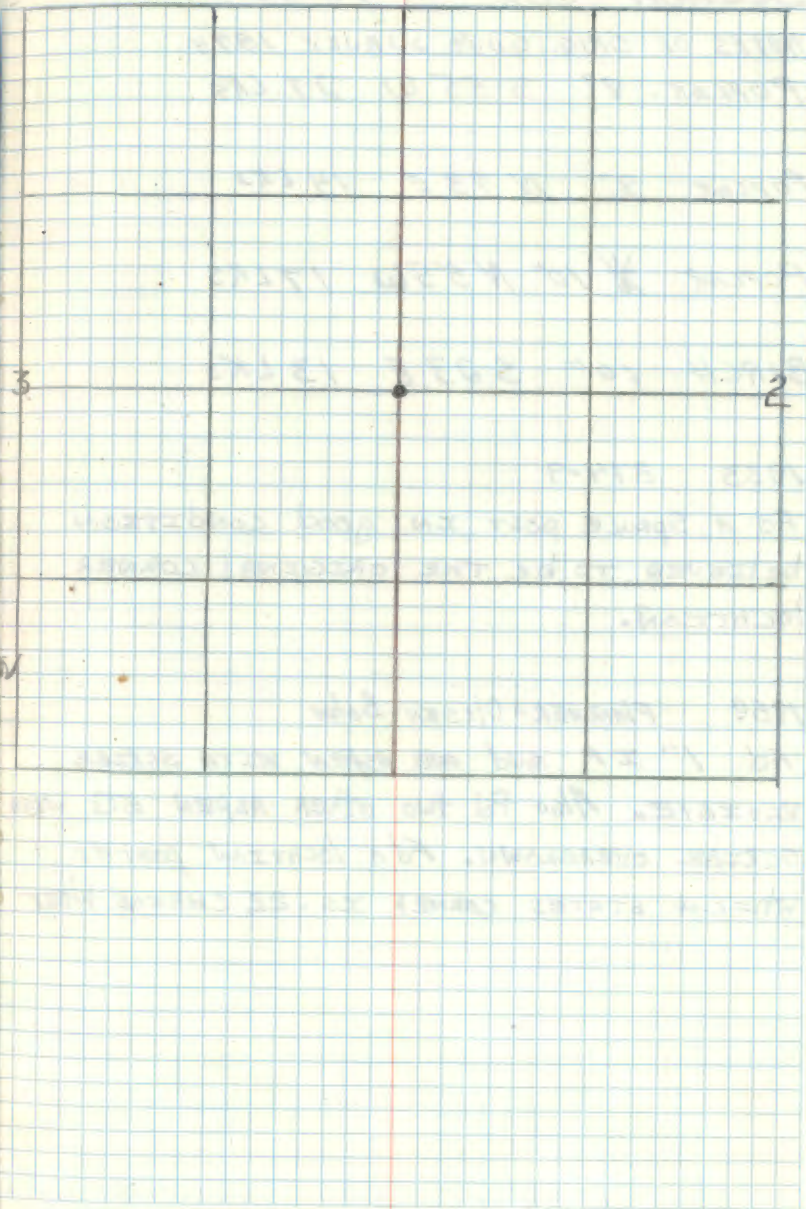
Now a Co. pipe w/ Alum. cap
From which

Elm 7" N 73° E 10.0' scribe overground

Basswood 8" S 50° W 22.0' " "

3/13/75 RHM

384 50%



SECTION COR. 11-12-13-14

NOTES OF ORIG. GOVY SURVEY 1874

POPLAR. 8" S 55 W 27 LKS

POPLAR 8" N 73 E 14 LKS

POPLAR * 10" N 55 W 17 LKS

BIRCH 10" S 23 E 13 LKS

1933 874-9

Fd A SPRUCE POST IN GOOD CONDITION
BELIEVED TO BE THE ORIGINAL CORNER
LOCATION.

1959 FLANCHER-Olesen-Bohn

Fd 1" IP AND ONE ASPEN WITH SCRIBE
VISIBLE. ALSO Fd TWO OTHER ASPEN BTs WITH
SCRIBE OVERGROWN. Fd A LOCATION POSTER
WHICH STATES CORNER IS .22 CHAINS WEST

CERTIFICATE FILED

M.C. FRACT'L SEC'S 12-13

NOTE OF ORIG. GOVT SURVEY 1874

CEDAR 3" S50W 14 LKs

SPRUCE 10" N42W 5 LKs

QUARTER COR. SEC'S 12-13
NOTES OF ORIG GOVT SURVEY 1874
FIR 9" N45W 8 LKs

ASPEN 6" S40E 15 LKs

Sec Book # 1 Page 2

40 G-21

QUARTER COR SEC'S 11-12

NOTES OF ORIG. GOVT SURVEY 1874

ASPEN 8" S 55 W 23 LKS

ASPEN 8" N 56 E 21 LKS

~~ASPEN 8" N 56~~

Notes of Co. Surveyor Frank Wray 1950

Δ iron Found marking corner.

Birch 8" S 4° W 19.2 Feet (Now a 8" Birch
S 11 1/2° W 19.2 Feet)

Set a 2" inside dia. galvanized steel pipe
filled w/ concrete and capped w/ a 3" dia
bronze tablet stamped T59N R26W

1/4
S11 | S12
1964
RLS NO 6907

From which

Maple 5" N 79° E 23.7 Feet scribed 1/4 S 12 BT

Birch 7" S 40 1/2° W 38.0 Feet scribed 1/4 S 11 BT

Steel sign post 72" long set 29" in ground w/
standard sign 54-4 attached due North 4.8 Ft.

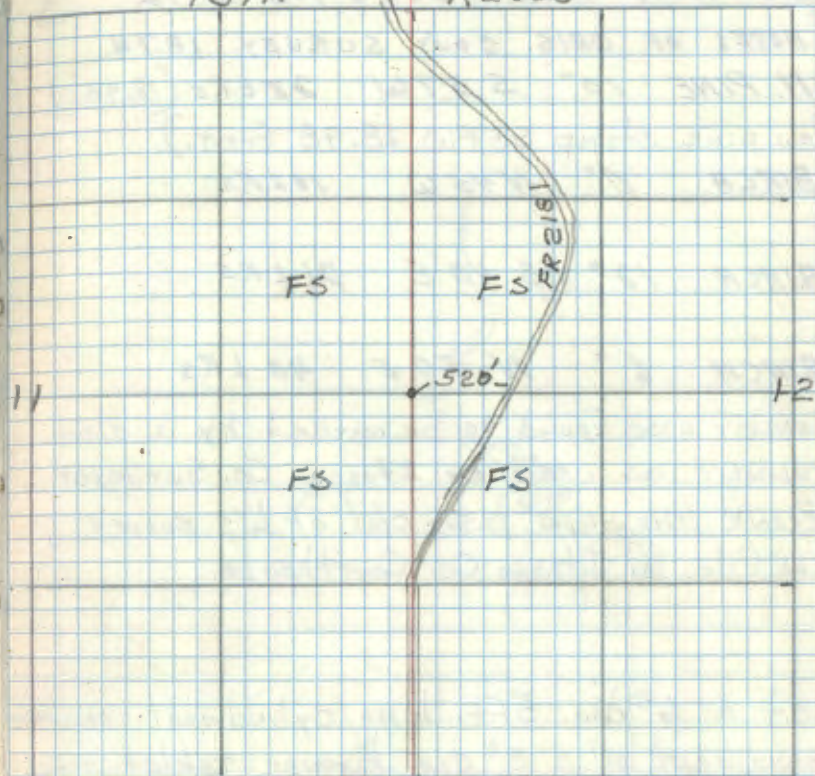
October 28, 1964 *Robert W. D. Dore*

Affidavit RHM

G-21

T59N

R26W



Corner is in a cut over area. Poster
is on west side of 2181 on 16" Aspen

11-30-67

James Spottis
checks OK

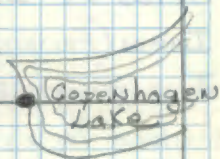
42

M.C. COR. FRACT'L SECS 1-12
ORIG. NOTES OF GOVT SURVEY 1874
TAM. 5" S 52 W 69 Lks

TAM 5" N 63 W 133 Lks

T59N R26W

1



12

43 E-28

QUARTER COR SEC'S 1-12

NOTES OF ORIG. GOVT SURVEY 1874

TAM 8° N53E 40 LKS

BIRCH 6° S80E 312 LKS

Notes of Itasca Co. Surveyor Frank Wray 1950

Iron (Found a 3/4" iron pin marking corner

Jack pine 12" N48 1/2° E 13.4' (Now a 17" Jack pine scribed "1/4 S1 BT" N56 1/2° E 13.4')

N. Pine 14" N30° W 43.6' (Now a 16" Red pine N22° W 43.6' scribed "1/4 S1 BT")

Set a steel pipe 2" inside diameter 5 feet long, filled w/ concrete and capped with a bronze tablet 3" dia. stamped

T59N R26W

1 S1

4 S12

1964

RLS NO 6807

Steel sign post 72" long set 24" in ground w/ std sign 54-9 attached Due South 7.75 Feet.

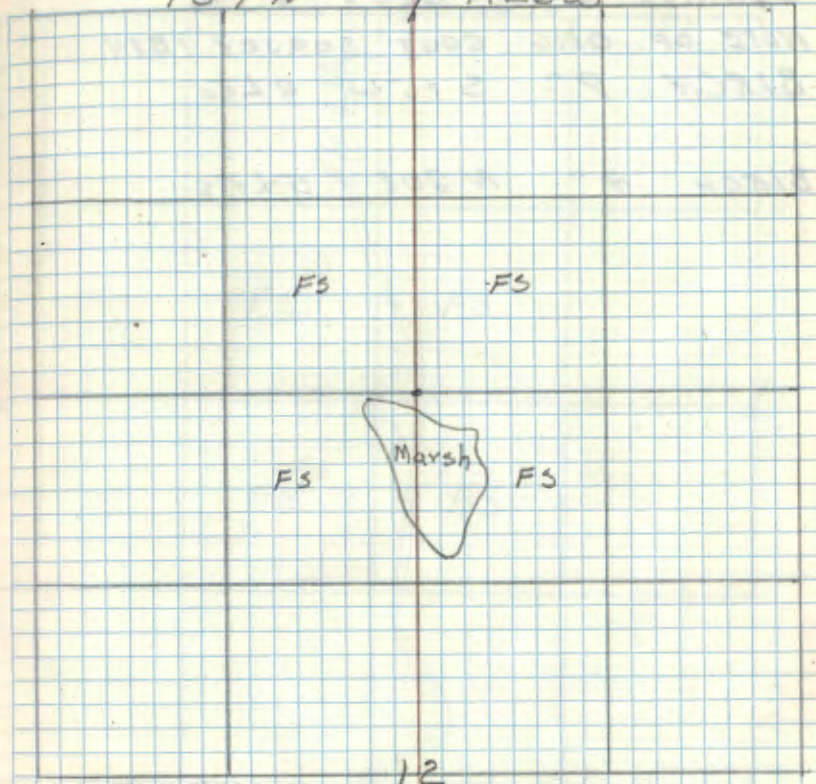
Co. BT's are in good condition

October 28, 1964 Robert H. Donald

Affidavit RHM

T59 N

R26 W



Corner lies 50 feet North of marsh on a pine ridge

11-30-67 James Ekstrom
checked OK

44

QUARTER 60R. SEC'S 1-2

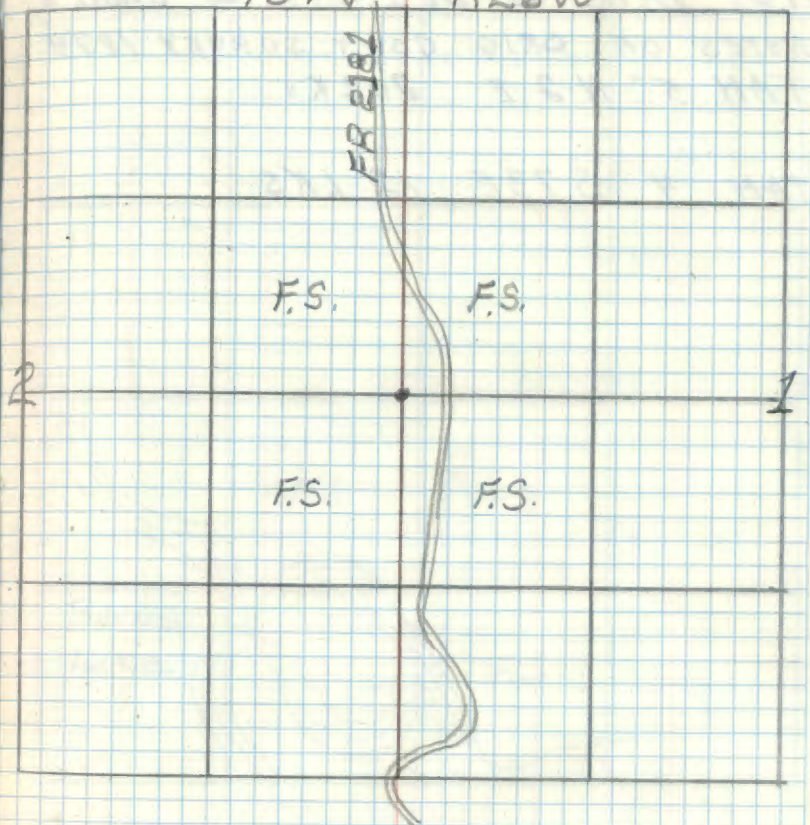
NOTE OF ORIG GOVT SURVEY 1874

BIRCH 9" S 15 W 4 LKs

BIRCH 9" N 20 E 5 LKs

T59N

R26W



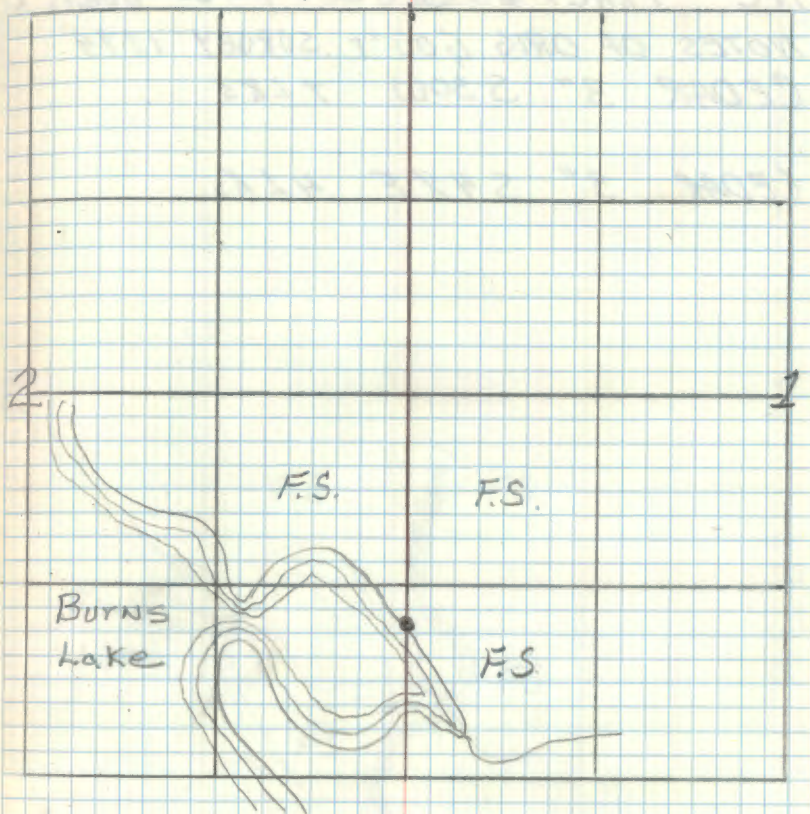
M.C. ~~ERACT'L~~ SEC'S 1-2 ^{N. SHORE} BURNS L.

NOTES OF ORIG. GOVT SURVEY 1874

TAM 5" N 2 E 20 LKS

TAM 4 S 73 E 12 LKS

T59N R26W



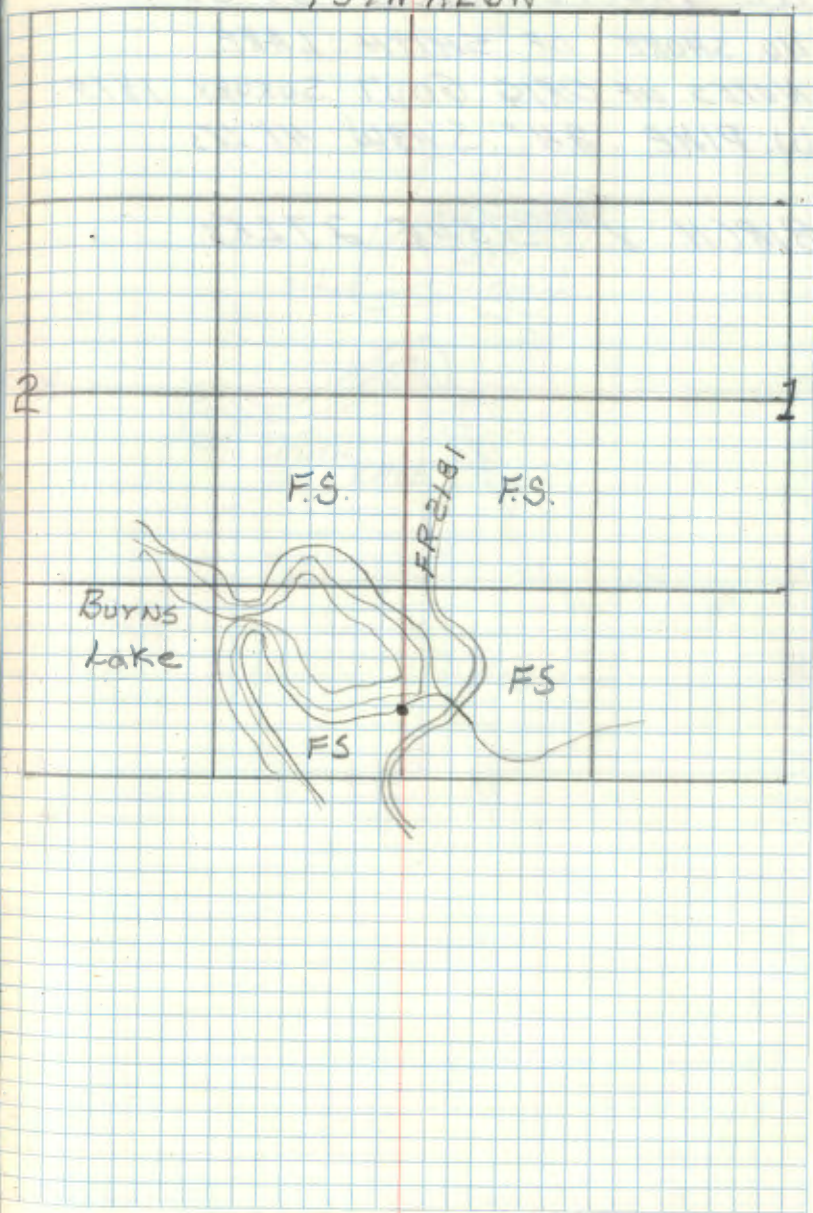
MC FRACT'L SEC'S 1-2 ^{S. SHORE} BURNS L.

NOTES OF ORIG GOV'T SURVEY 1874

CEDAR 3" S30W 7 LKS

CEDAR 3" S48E 4 LKS

T59N R26W



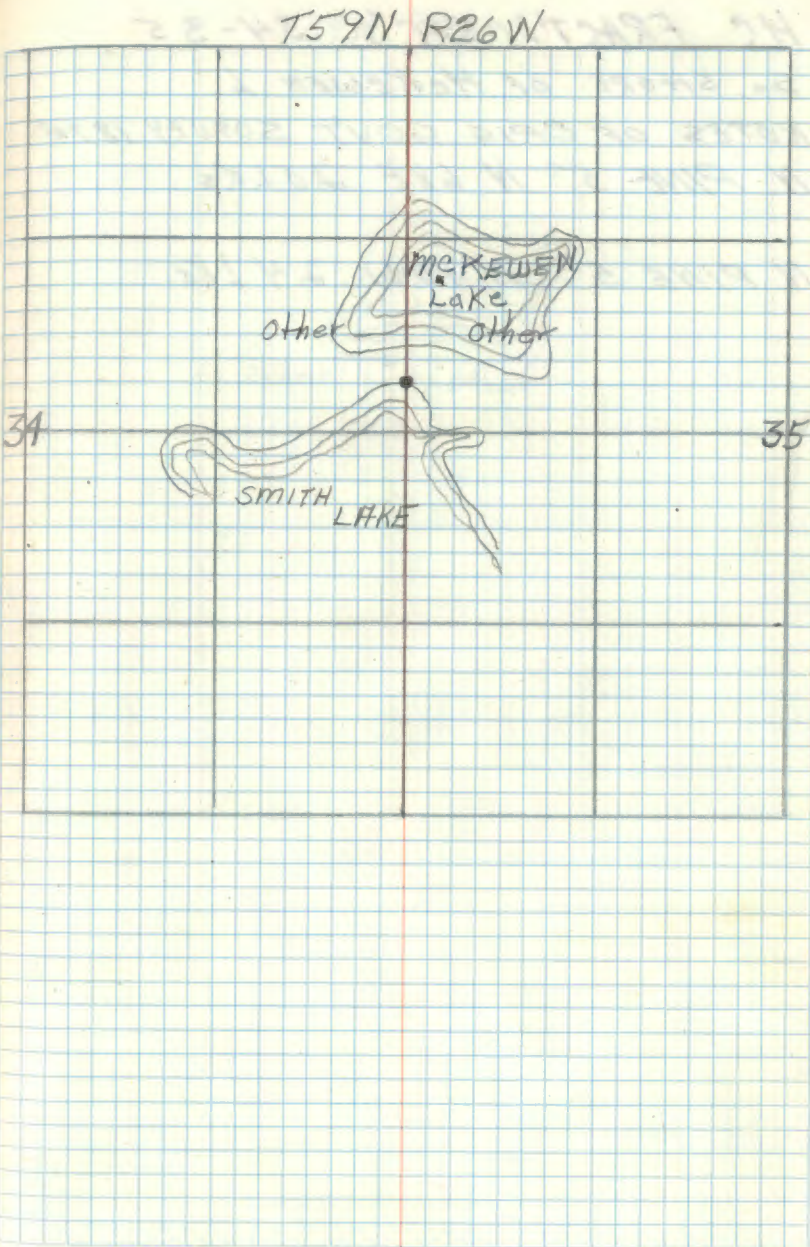
M.C. FRACT'L SEC'S 34-35

NO. SHORE OF SMITH LAKE

NOTES OF ORIG GOVT SURVEY 1874

W. PINE 24" S43W 41 LKS

BIRCH 1" S50E 27 LKS



MC FRACT'L. SEC'S. 34-35

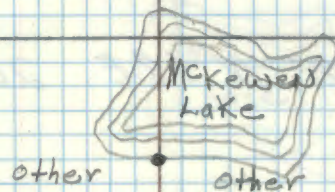
So. SHORE OF MCKEWEN L.

NOTES OF ORIG GOV'T SURVEY 1874

N. PINE 5" N 68E 20 LKs

N. PINE 5" N 40W 24 LKs

T59N R26W



M.C. FRACT'L SEC'S 34-35

N. SHORE OF MCKEWEN L.

NOTES OF ORIG GOV'T SURVEY 1874

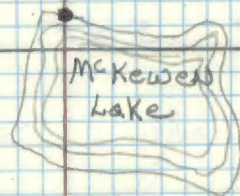
N. PINE 5" N 40 W 24 LKS

N. PINE 5" N 68 E 20 LKS

T59N R26W

Other

Other



50 V-19

QUARTER COR. SEC'S 26-35

NOTES OF ORIG GOV'T SURVEY 1874

W. PINE 12" N 9 E 26 LKs

ASH 9" S 2 E 64 LKs

DEC 12, 1977

STEPAN

FOUND: COUNTY PIPE WITH "A1" CAP
IN PLACE.

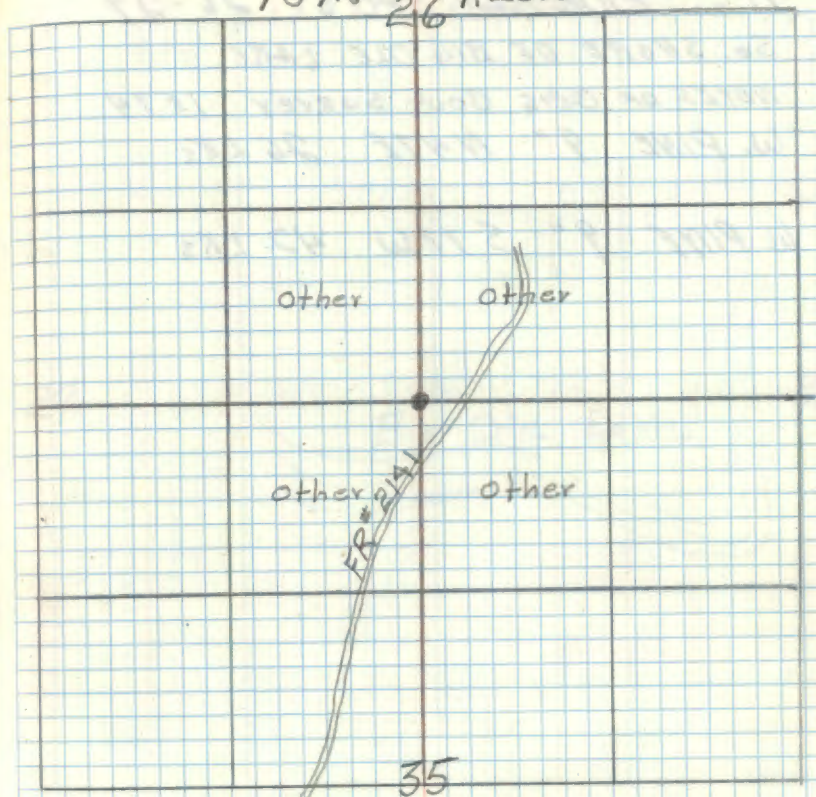
FROM COUNTY NOTES:

B. ASH, N W,

R. MAPLE, S E,

LARGE SCRIBED PINE STUMP N W
OF COUNTY MONUMENT.

T59N 26 R26W



M.C. FRACT'L SEC'S 26-27

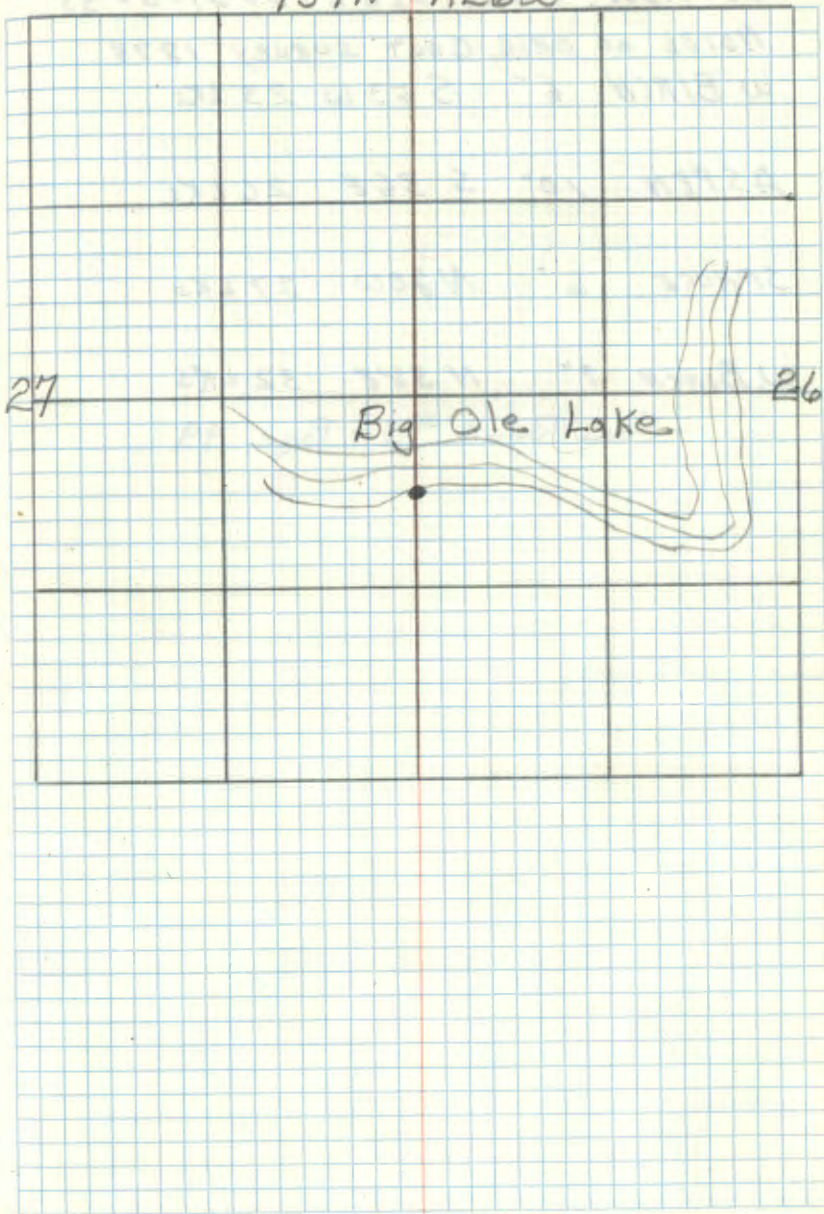
SO. SHORE OF BIG OLE LAKE

NOTES OF ORIG. GOVT SURVEY 1874

W. PINE 9" N47E 26 LKS

W. PINE 9" S77W 42 LKS

T59N R26W



SECTION COR. SEC'S 26-27-34-35

NOTES OF ORIG. GOVT SURVEY 1874

W BIRCH 6" S 53 W 23 LKS

ASPEN 10" S 36 E 26 LKS

SPRUCE 6" N 20 W 27 LKS

W. BIRCH 7" N 38 E 32 LKS

See Book # 1 Page 49

MC FRACT'L SEC'S 26-27

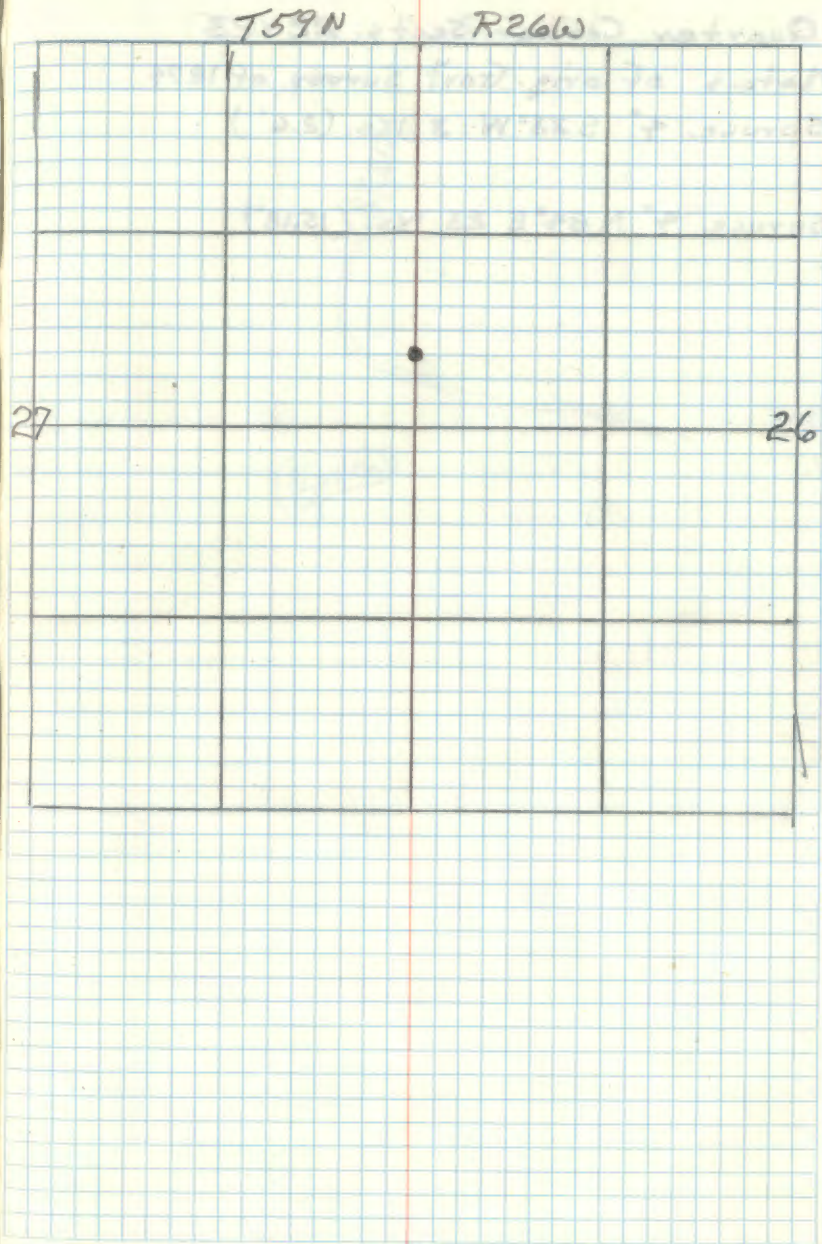
No. SHORE OF BIG OLE Lake

Notes of orig. Govt. Survey of 1874

~~White pine 9" N47°E 261ks (or 17.16')~~~~White pine 9" S77°W 421ks (or 27.72')~~

White birch 7" N 72°W 401ks (or 26.4')

Spruce 5" N 60°E 251ks (or 16.5')



55 N-17

113

Section Corner 14-15-22-23

Notes of orig. Govt. Survey of 1874

Birch 5" S52°W 22 Iks.

Birch 6" N68°W 21 Iks.

Birch 5" S43°E 11 Iks.

Spruce 4" N82°E 17 Iks.

Notes of Co. Surveyor Bernard Craig in 1916
survey of Co Road #172N. Pine 4" N65°W 41.5' (Now a 13" Red pine
N55°W 41.5 Feet w/ scribing visible.)N. Pine 4" N58°E 44.7' (Now a 15" Red pine N57°E
44.7 Feet w/ scribing visible.)N. Pine 5" S67°E 75.0' (Now a 12" Red pine
S57°E 75.0 Feet w/ scribe overgrown.)

Birch 4" S43°W 42.3'

Corner was marked by a decayed post & post hole.
I set a 6" dia. 5' long cylindrical concrete
monument capped with a 3" dia. bronze tablet
stamped:

T59N R26W

S15 | S14

S22 | S23

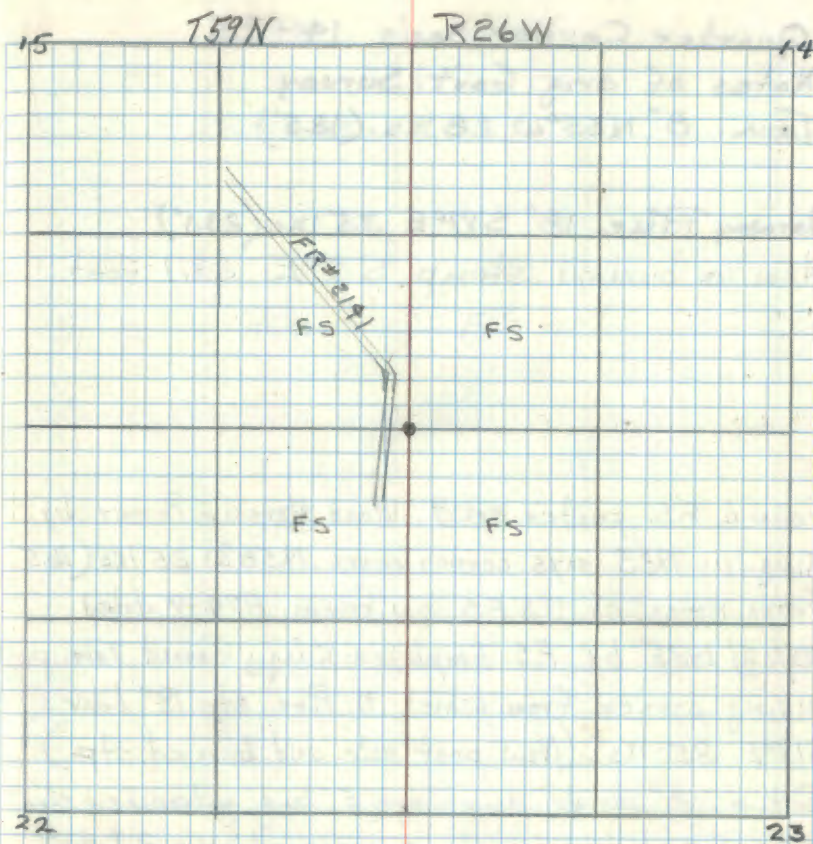
RLS¹⁹⁶⁴ No 6807

Rescribed the 3 co. BT's with letters "BT"

Set a 4"x4"x72" Red top cedar post on
East side of FR2141 due West 113.0 Feet

Affidavit RHM

N-17

Set Steel sign post 72" long w/ sign
54-4 attached S20°W 5.65 Feet

11/6/69

Robert W. Donald

11-29-67 James Erickson
Checked OK

56 N-19

Quarter Corner Sec's 14-23

Notes of orig. Govt. Survey

Tam. 8" N55°W 28 1/2 kts. (18.5')

Norway Pine 18" S17°E 35 1/2 kts (23.1')

Now a burned stump S 7°E 23.1 Feet

Found F.S. post on 9" dead Hesperia Post by King in 1935 says corner bears N58°W 25 1/2 kts (16.5')

From notes of USFS on Form 874-9 dated

10/12/1935 by FS. Employee King, Found Tam. post making corner from which N. Pine stp 18" bears S17°E 35 1/2 kts. (Now post hole and burned stp.)

Set a 2" inside diameter 5' long galvanized steel pipe filled w/ concrete and capped w/ a 3" dia bronze tablet stamped:

T59N R26W

Set in post hole

$$\frac{1}{4} \frac{514}{323}$$

RLS NO 1964 6807

Red pine 6" S43°E 55.5 Ft MKD 1/4 S23 BT

Red pine 6" N30°E 37.4 Ft. MKD 1/4 S14 BT

Steel sign post 72" long set 24" in ground w/

F.S. standard signs 54-2557 & attached due North 4.7 Feet.

Affidavits

N-19

T59N

14

R26W

	Rt	FS
	FS	FS
		23

Old FS Post Now S48°E 16.5 Ft

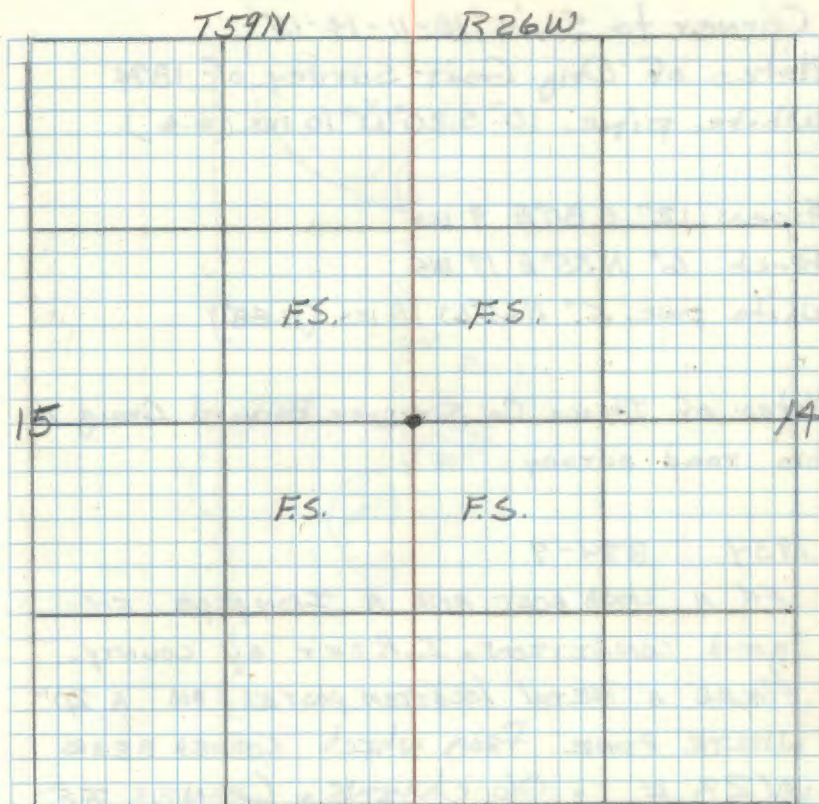
11-3-69 *Robert H. [unclear]*11-30-67 *James [unclear]*
Chelke OK

57

Quarter Corner Sec's 14-15
Notes of orig Gait Survey of 1874
Cedar 8" $S 74^{\circ} E$ 4 lks. (2.69')

Cedar 5" $S 46^{\circ} W$ 20 lks (13.2')

Notes of Itasca Co. Surveyor Bernard Craig
from his road survey of 1916
Found 2 Gait. BTs burned, set cedar post
No trees near



59 J-19

Quarter Corner Sec's 11-14

Notes of orig. Govt. survey.

Norway pine 11" ^{South} ~~515~~ 151ks (9.9')

Norway pine 10" ^{North} ~~118~~ 81ks (5.28') (Now a burned pine stump North 5.28')

Notes of Itasca Co Survey or Frank Wray in 1950

Δ iron & new post. Found marking corner - post ^{laying on ground.}
old N. pine 10" S76 $\frac{1}{4}$ W 37.4 Ft. (Now a 7" N. Pine S85W 37.4 feet scribed $\frac{1}{4}$ S14 BT)

Jack pine 12" N89 $\frac{3}{4}$ E 26.2 Ft. (Now a dead Jack pine 13" S82E 26.2 Ft. scribed $\frac{1}{4}$ S14 BT)

Set a 2" inside dia. 5 foot long galvanized steel pipe filled w/ concrete and capped w/ a 3" dia. bronze tablet stamped:-

T59NR26W

$\frac{1}{4}$ $\frac{S11}{S14}$

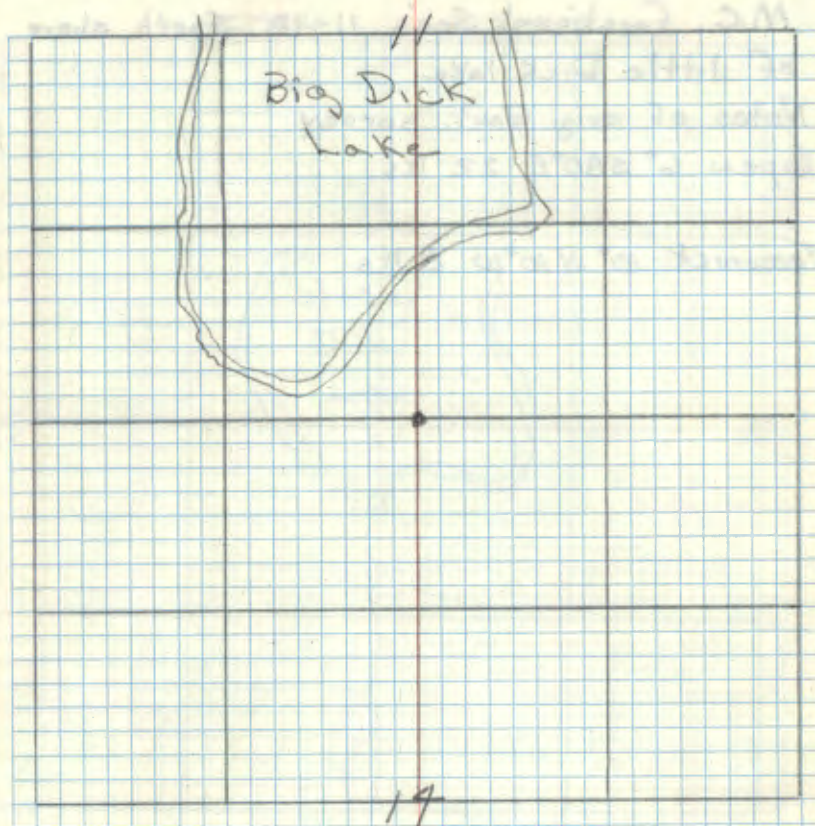
1964
RLS NO 6807

Red pine 8" N72E 119.8 Feet MKD $\frac{1}{4}$ S11 BT
Steel sign post 72" long set 24" in ground w/ standard sign 54-4 attached Due North 4.2 Ft.

11-2-64 Robert H. M. G. Conard

Affidavit RHM

J-19



11-30-67 James Esterson
Christie ok

also found a 2" Maple S32E 24.7'
scribed $\frac{1}{4}$ S14 BT. Believe to be from recent County Survey.

1934 874-9

Fd Wood Post AND IRON PIPE IN GOOD
CONDITION. PLACED A METAL LOCATION POSTER
ON A 10" PINE FROM WHICH CORNER BEARS
N83W .41 CHAINS (27.06 FT)

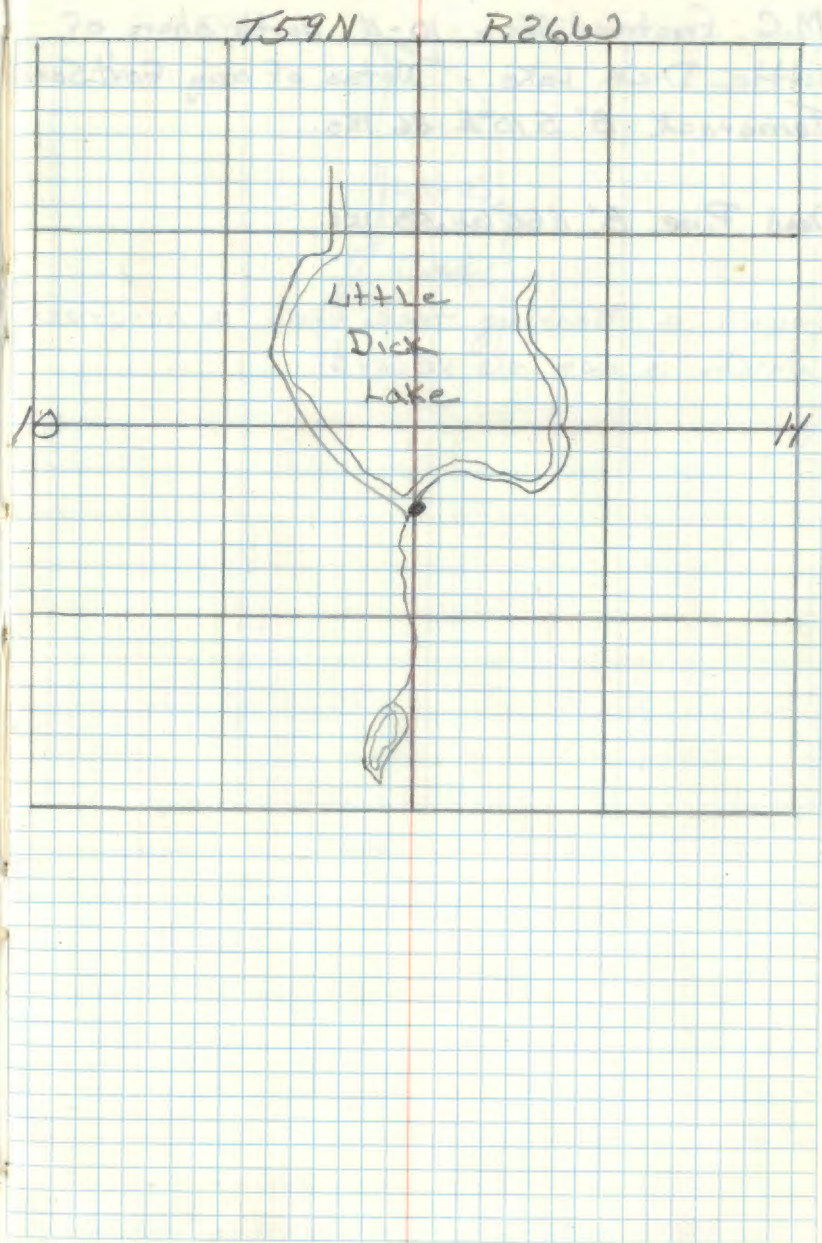
60

M.C. Fractional Sec's 11-10 South shore
of Little Dick lake

Notes of orig. Gov't. survey

Aspen 6" S80°E 22 lks.

Tamarack 10" N10°W 8 lks.

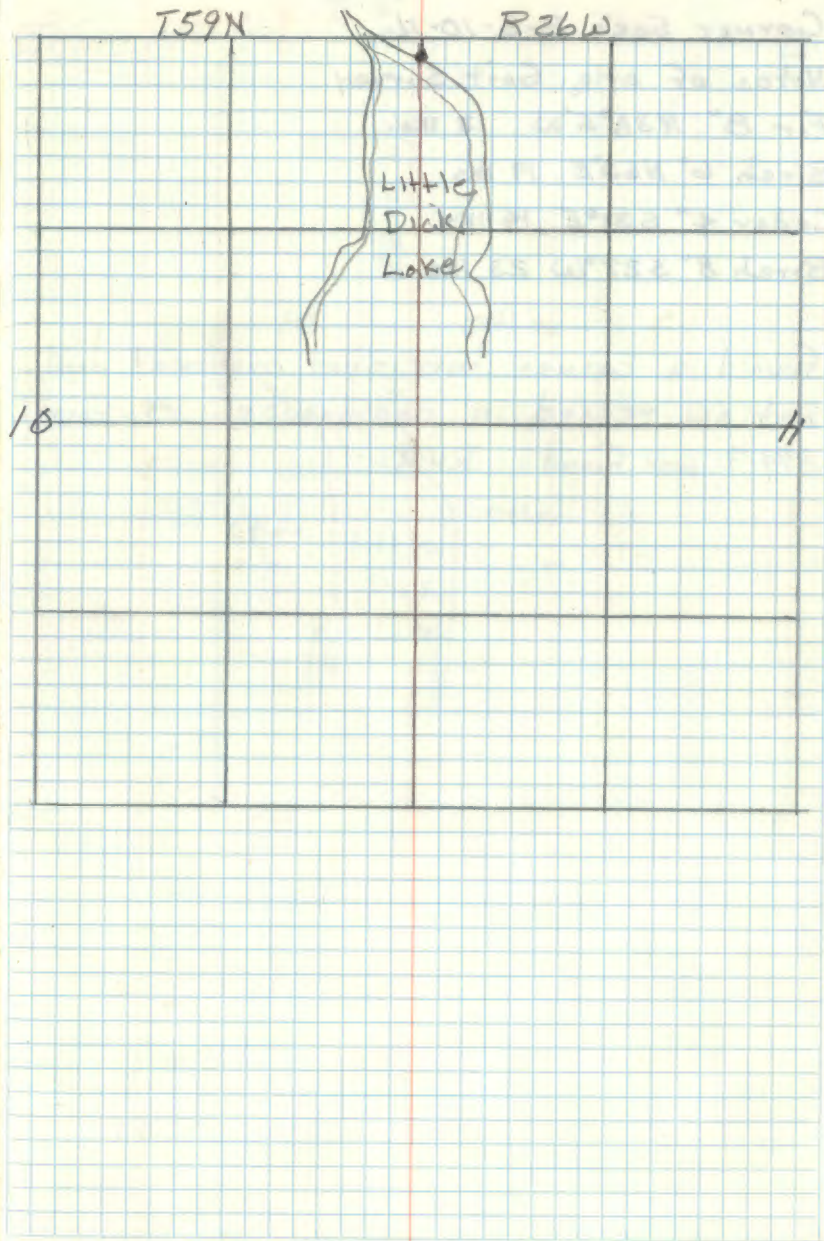


61 E, F-17

M.C. Fractional Sec's 10-11 North shore of
Little Dick Lake - Notes of orig Govt. Survey
Tamarack 8" S10°E 36 Iks.

Dead Pine 8" N60°W 50 Iks.

Found a Bearing tree from a resurvey
which is not on record



62 E-17

Corner Sec's 2-3-10-11

Notes of orig. Govt. Survey

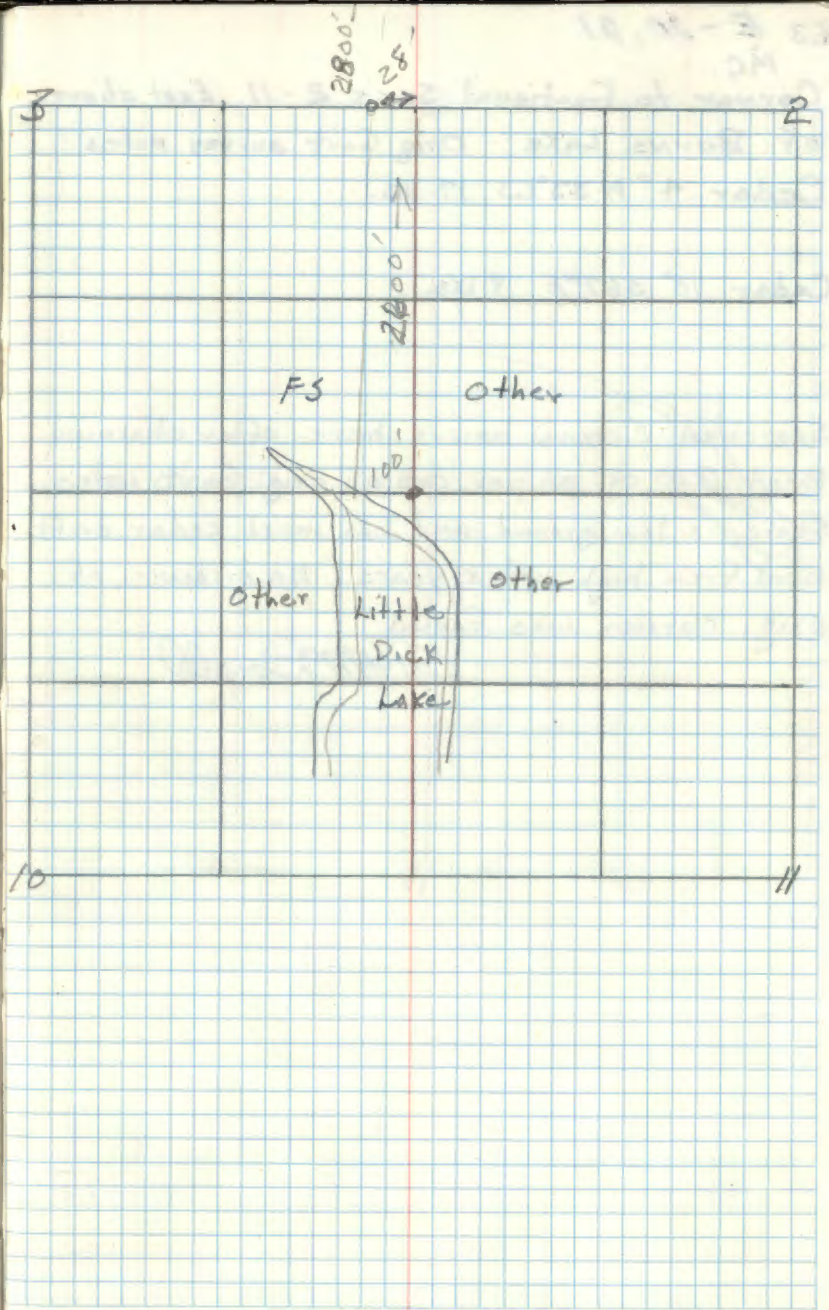
Fir 8" N38°5'W 13 1/2 ks.

Birch 6" N60°E 19 1/2 ks.

Cedar 4" S31°E 14 1/2 ks.

Birch 8" S27°W 23 1/2 ks.

Found a corner here - not original and
not on record in courthouse. FS. Farm
874.9 was found. RHM



63 E-20, 21

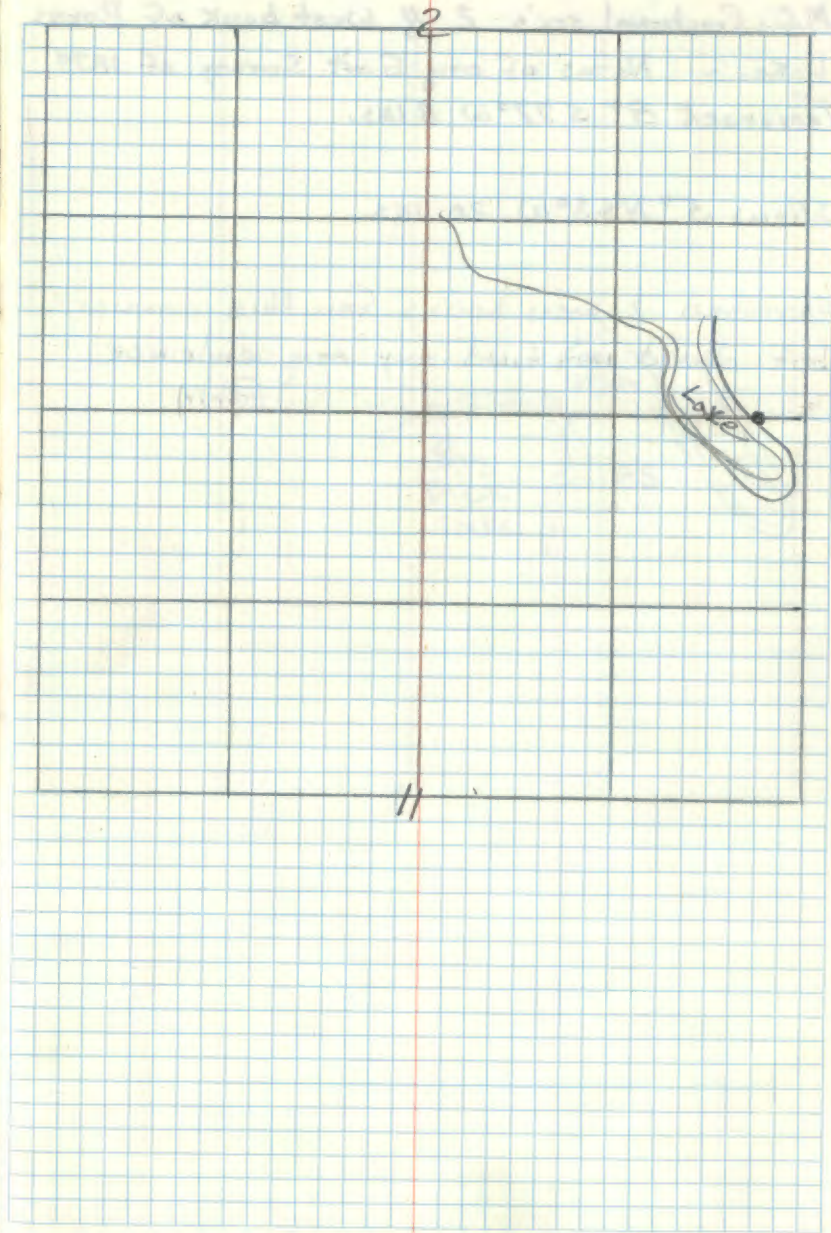
M.C.

Corner to Fractional Sec's 2-11 East shore
of Burns Lake - Orig Gait survey notes
Cedar $4^{\circ} N 33^{\circ} W$ 17 lks.

Cedar $10^{\circ} S 67^{\circ} E$ 9 lks.

Searched 2 man hours here after chaining
west 7.00 ch. as per call of orig. Gait notes.
Shore is low ground and has much cedar drift
wood from high water years. No evidence of
orig. corner was found.

James Donald



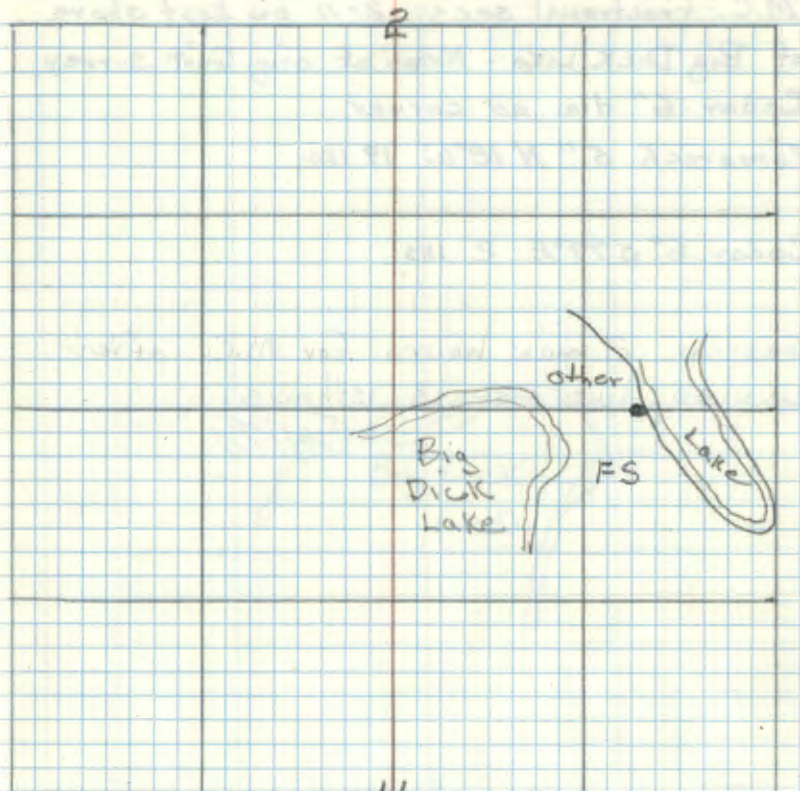
69 E-20, 21

M.C. Fractional sec's. 2-11 West bank of Burns
Lake - Notes of orig. Govt. Survey of 1879
Tamarack 8" S77°W 81ks.

Willow 5" N43°W 201ks.

Searched 2 man hours for this corner,
but could not find any orig. evidence.

RAM



65 E-19, 20

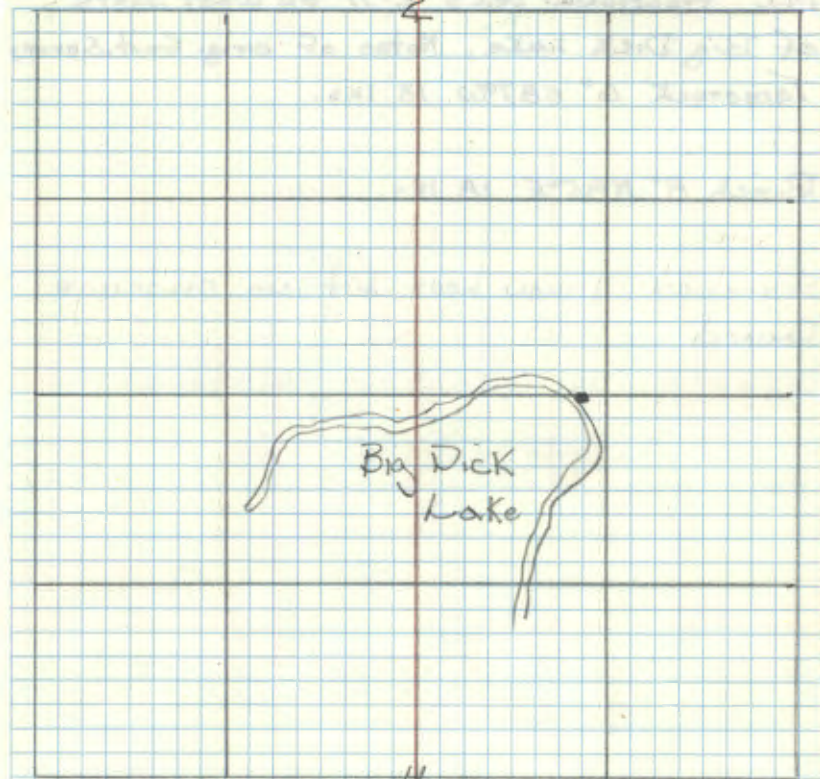
M.C. Fractional sec's. 2-11 on East shore
of Big Dick Lake - Notes of orig. Govt. Survey
Cedar 6" dia. as corner

Tamarack 5" N 10° W 19 1/2.

Cedar 6" S 77° E 2 1/2.

Searched 2 man hours for M.C. after
running line across isthmus.

JHM



66 E-19, 20

M.C. Fractional Sec's 2-11 on West shore
of Big Dick Lake. Notes of orig. Govt. Survey
Tamarack 6" S87°W 13 1ks.

Birch 8" N85°E 18 1ks.

Searched 1 man hour but no evidence
found

67 E-19

Quarter Corner Secs 2-11

Notes of orig. Govt. Survey of 1874

Norway pine 12" S80°W 27 lks.

Norway pine 5" N64°30'W 25 lks.

Found two scribed bearing trees
not original believed to be private
survey - no record at courthouse.

CHM

68 X-13

QUARTER COR SECS 33-34

NOTES OF ORIG. GOVT SURVEY 1874

DEAD CEDAR 5" N 64W 67 LKS

ASPEN 4" N 28E 35 LKS

2 hours search did not reveal
any evidence of corner.

STAM

CERTIFICATE FILED

364 50%

69

MC FRACT'L SECS 33-34

So SHORE LITTLE SMITH L.

NOTES OF ORIG GOVT SURVEY 1874

N PINE 8" S 19 E 40 LKS

N PINE 9" S 81 W 52 LKS

1935 FORM 874-9 E. MEAGHER

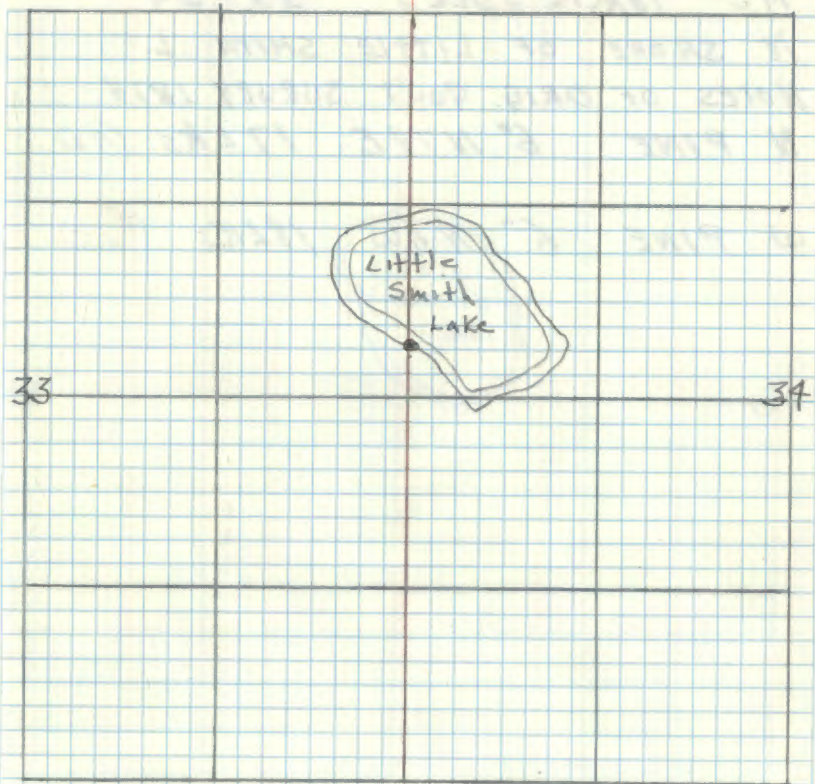
CORNER CONSISTS OF NEW 4" SPRUCE POST.

R PINE STUMP 12" S 84 W 52 LKS

R PINE 12" S 84 E 40 LKS

METAL LOCATION POSTER ON NORTH EAST SIDE
OF THE RED PINE STUMP BEARING TREE.

CERTIFICATE FILED



70

MC FRACT'L SECS 33-34

N SHORE OF LITTLE SMITH L.

NOTES OF ORIG. GOV'T SURVEY 1874

N PINE 6" N79E 17 LKS (112)

W PINE 6" N6W 19 LKS (125)

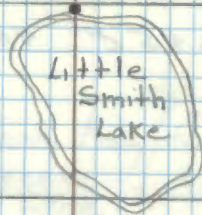
CERTIFICATE FILED

T59N

R26W

33

34



71 G, H-13

M.C. FRACT'L SECS 9-10
So. SHORE OF JACK THE HORSE L.
NOTES OF ORIG. GOVT SURVEY 1874
CEDAR 5° S 31 W 56 4ks

CEDAR 4° S 45 E 40 4ks

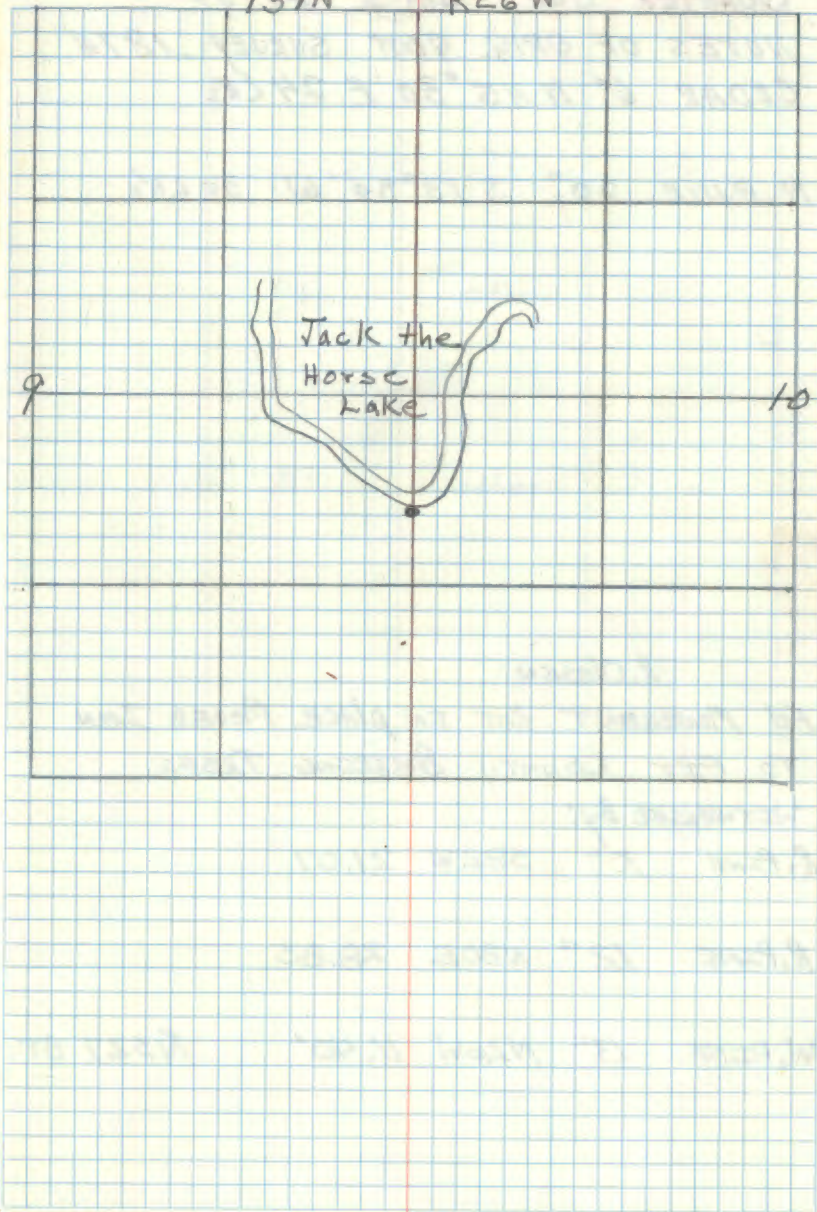
Found a F.S. metal location poster on
a 14" cedar put up in 1935 by F.S. employee
George Jennings - reads - M.C. bears N-55°W
42 ks or 27.72 Ft. this point is now in
the lake. 6-17-65 RHM

I placed a new F.S. location poster on
same cedar tree.

CERTIFICATE FILED

T59N

R26W



QUARTER COR SECS 27-34
 NOTES OF ORIG. GOVT SURVEY 1874
 CEDAR 6" N 45° 30' E 24 Lks

N PINE 20" S 13° 30' W 30 Lks

R. Olesen

Ed MONUMENT NOT IN PLACE. MOVED IRON
 TO FIT COUNTY BEARING TREES.

WITNESSED BY:

R. PINE 10" S82W 21.07

R. PINE 12" N80E 28.80

W. PINE 13" N26W 11.40' 1/4 527 BT

27

FS

other

FS

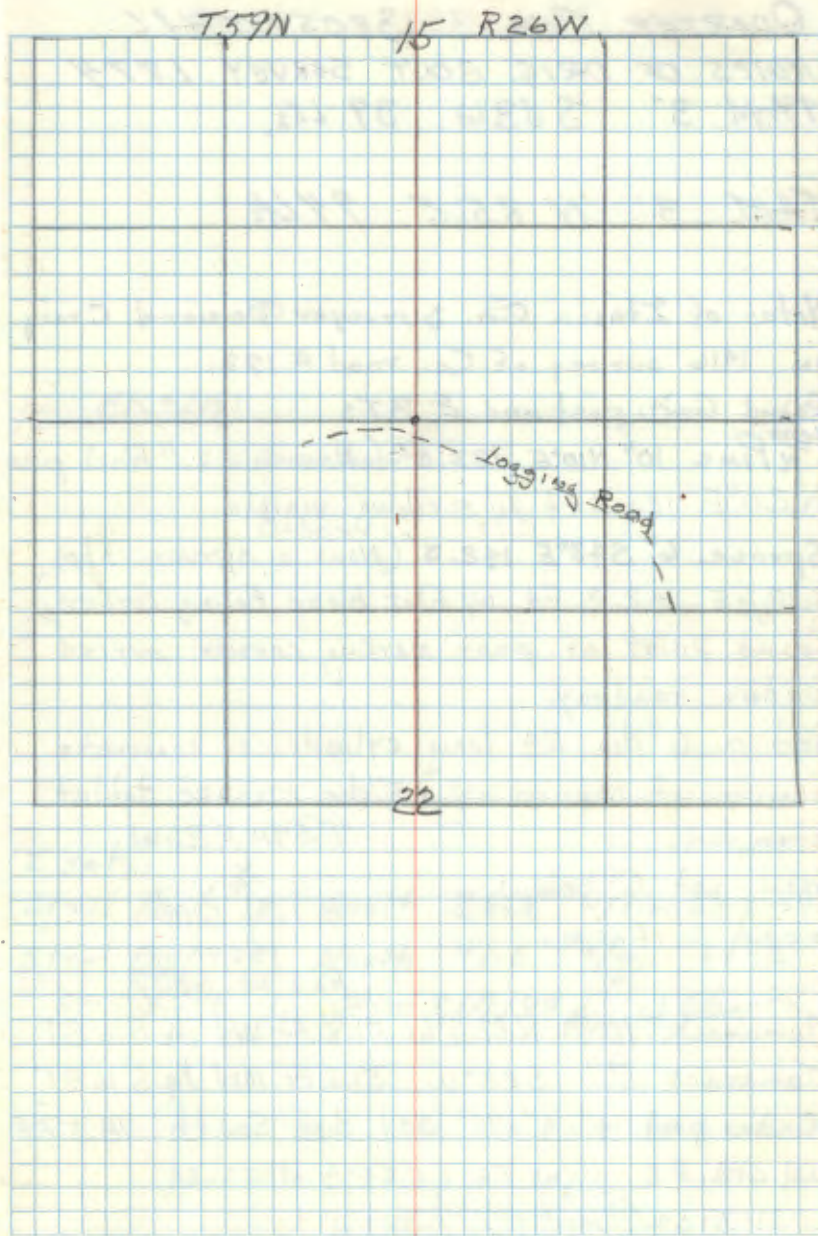
other

34

73

QUARTER COR SECS 15-22
NOTES OF ORIG SOUT SURVEY 1874
BIRCH 6" N6E 74 LKs

BIRCH 6" S 20 W 18 LKs



74 L-13

QUARTER COR SECS 15-16
NOTES OF ORIG. GOVT. SURVEY 1874
TAM 3° S 83° W 39 Lks.

TAM 3° N 85° E 94 Lks.

Notes of Itasca Co. Surveyor Bernard Craig
in 1916 survey of Co. road # 172

Found Govt. post and 2 BTs

^{New} N. Pine 10" N10°E 123.0' (Now a 22" Red pine
N20°E 123.0 ft w/ scribing visible

Spruce 6" S43°E 142.3' (Now a spruce stp.
S33½°E 142.3 ft w/ flat blaze facing corner)

Found point of post marking corner buried
under roadway.

Set a 6" dia. 24" long cylindrical concrete
monument capped w/ a 3" dia. bronze tablet
stamped:

T59N R26W

mon. set 6" below

road surface

1/4
S 16 | S 15

1964

RLS NO 6807

Tamarack 10" N32½°W 51.8 Ft Mkd ¼ S16 BT

Tamarack 7" S23°W 39.3 Ft Mkd ¼ S16 BT

Cedar post 4"x4"x72" set due South 18.5 Ft

w/ std. F.S. signs 54-2 & 54-4 attached

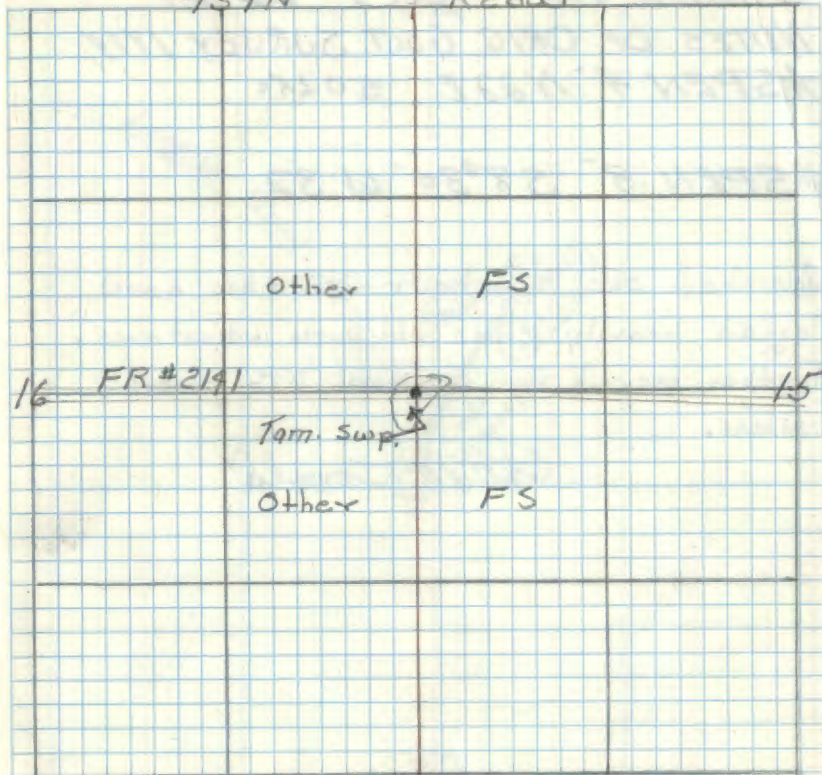
11-5-64 *Phew H Mc Donald*

Affidavit RHM

L-13

T59N

R26W



I set

Steel Post 8' South 25.5' w/sign 54-2-54-9

Steel Post 8' North 41.5' w/sign 54-2

R9-7150-4 by Olson 8/11/80 Ronald Olson

75 R-15

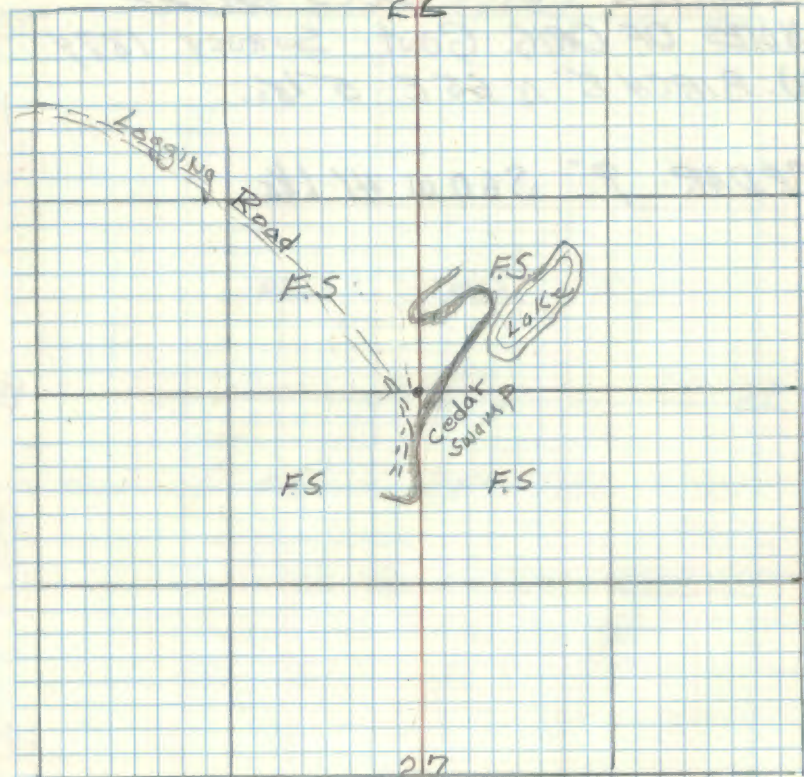
QUARTER COR SECS 22-27
NOTES OF ORIG. GOVT. SURVEY 1874
ASPEN 4° N 22° E 50 LK.

ASPEN 3° 58' 30" W 32

Searched one man hour - area has been
logged heavily & has old burn indications.
Further search for original BTs probably
useless.

G.H. McDonald

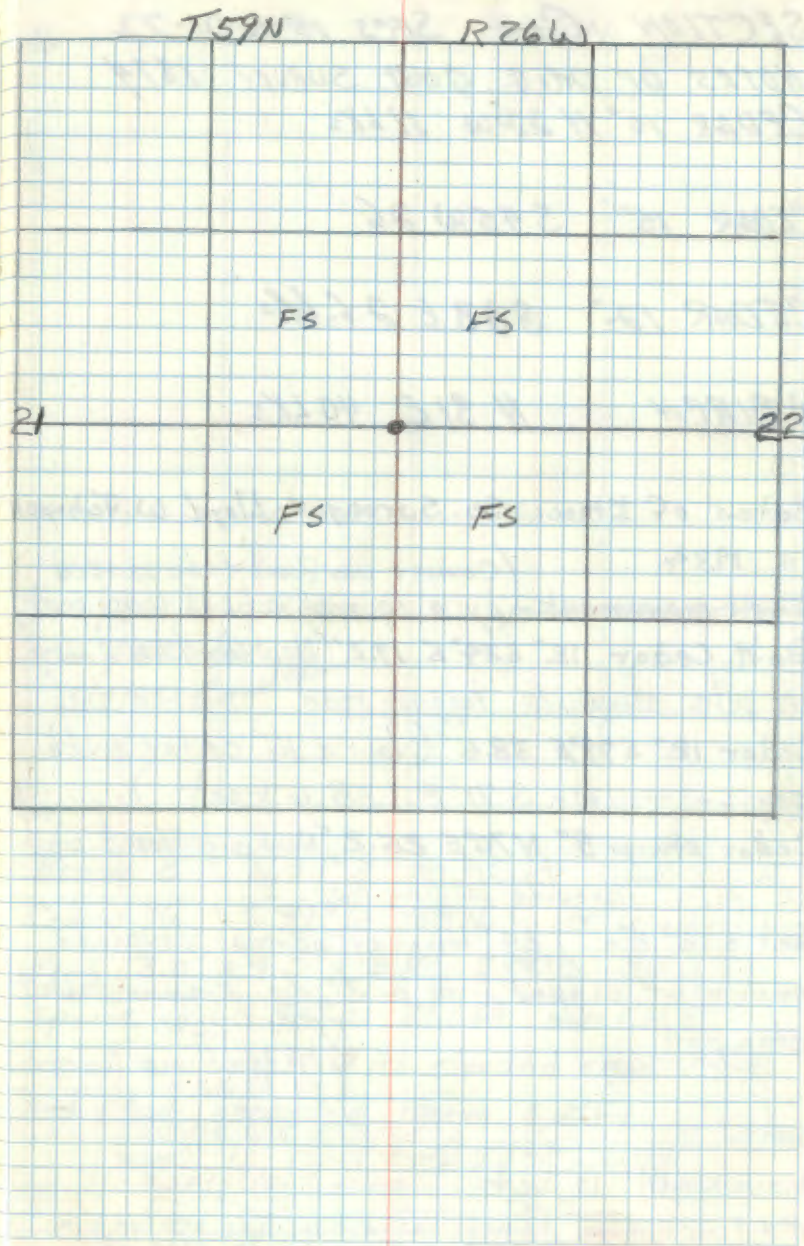
22



76

QUARTER COR SECS 21-22
NOTES OF ORIG. GOVT SURVEY 1874
W. BIRCH 8° N 65 E 5 Lks.

CEDAR 9° S 60 W 4 1/2 Lks.



77 N-13

SECTION COR SECS 15-16-21-22
NOTES OF ORIG. GOVT. SURVEY 1874
CEDAR 10° N 22° W 11 LKs

CEDAR 15° S 45° W 26

CEDAR 12° S 23° E 26 LKs

W BIRCH N 31° E 40 LKs

Notes of Itasca Co. Surveyor Lloyd W. Johnson
in 1934

~~Iron monument~~ (Corner was found to be marked
by a squared scribed cedar post)

Govt. Cedar 12° S 34° E 17.2' (Now bulldozed log
in pile alongside logging road)

Cedar 12° S 79° E 38.6' (Now a 16" cedar with
scribe visible S 71° E 38.6 Feet.)

Cedar stump 8" N 70° E 25.2' (Now a bulldozed stub
in pile alongside logging road.)

Set a 6" dia., 24" long cylindrical concrete
monument capped with a 3" dia. bronze tablet
stamped

T59N R26W

S16 | S15

S21 | S22

RLS 1965
NO 6807

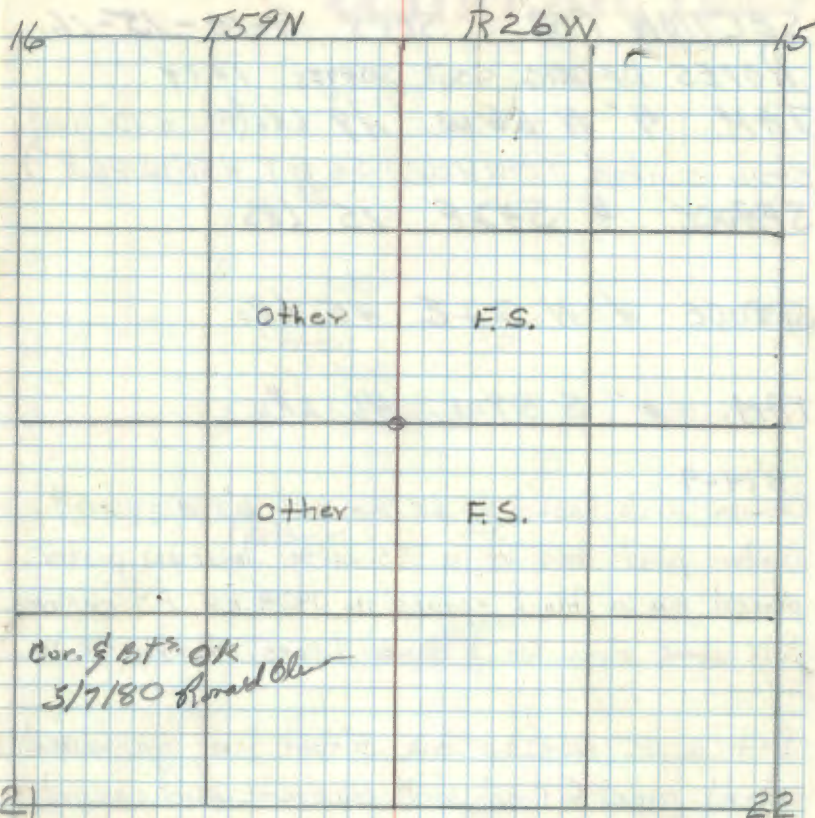
Note

monument is set below surface.

11-29-67 - also found a 2" dia. pipe w/valve
cap stamped 759N 2 sec on south side of
1665 monument above - 12" Balazs.
21/22 532°W 45.9' scribed T59R26S22

Affidavit RHM

N-13



Aspen 8" N 34° E 30.3 feet MKD S15 BT
 Cedar 16" S 71° E 38.6 feet w/ old scribe
 Rock 3.0' x 4.0' x 2.5' S 54° W 85.0 Ft.
 Spruce 10" N 54° W 31.0 Ft MKD S16 BT
 Steel sign post w/ FS. standard signs 59-2
 and 54-4 attached North 3.5 Ft.

June 11, 1965 A.H. McDonald
 11-29-67 James Oleson
 Checked OK

RA-7150-4 by Oleson

78 J-13

Affidavit 3/2/79

SECTION COR SECS 9-10-15-16

NOTES OF ORIG. GOVT. SURVEY 1874

TAM. 4" N 66 W ^{32.35} 49 LKs (Now a 10" dead
stub scribed T59NR26W 56 BT N50°W 26.8')SPRUCE 4 S 42 E 15 ²⁹ LKsSPRUCE 4' N 22 E ^{29.7} 45 LKsTAM. 4' S 59 W ^{20.76} 46 LKs

874-9

Corner was found to be marked by a squared
wooden post and by a F.S. metal location marker
placed on a black spruce in 1934 by F.S. employee
Polkrabek. From which corner bears North 40 LKs

Set a 2" inside dia. 5 foot long galvanized
steel pipe filled with concrete and capped
with a 3" dia bronze tablet stamped

T59N.R.26W.

S 9 | S10

S16 | S15

1965

P.L.S. NO. 6807

OK
MES
RHS 12261

Monument & BT's in good
condition 5/7/80
Donald Allen
RA-7150-4 by Olson

CERTIFICATE FILED

16

10

other F.S.

other F.S.

16

15

Black spruce
Tamarack → 6" N 57°W 27.5' MKD 59 BT
Tamarack 6" N 25°E 3.15' MKD 510 BT
Tamarack 6" S 57 1/2° E 15.5' MKD 515 BT
Black spruce → 7" S 26 1/2° W 62.5' MKD 516 BT
Steel sign post 72" long with F.S. standard signs
57-2 & 57-4 attached set south 4.85'

79 J-15

QUARTER COR SECS 10-15

NOTES OF ORIG. GOVT. SURVEY 1874

W BIRCH 9" S20E 14 LKs

B. ASH 8" N15W 16 LKs

Notes of Itasca Co. Surveyor Bernard Craig

in 1916 survey of Co. road #172

Found Gov't BT stumps & mxd new witness trees

Poplar 10" N55°E 56.0 ft.

W. Pine 14" S31°W 60.0 ft.

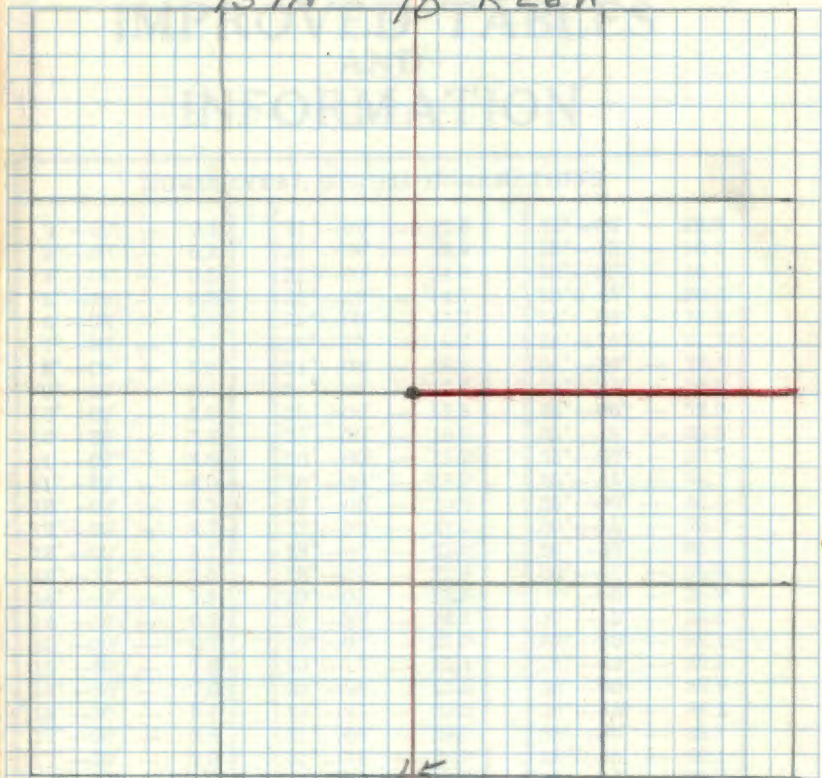
Searched 3 man hours but could not find these BT's. RHM.

this corner is now reestablished by Itasca County resurvey crew. I marked line East to section corner of 10-11-14-15. April 27, 1967
RHM

1934 874-9 PULKRABECK

Fd DECAYING CEDAR POST. INDICATES THE CORNER HE FOUND IS NOT ORIGINAL BUT A NEW CORNER. PLACED METAL LOCATION TAG ON A 10" BLACK ASH ON THE NE SIDE OF THE TREE FROM WHICH CORNER BEARS S24W .15 CHAINS. (9.9 FT)

T59N 10 R26W



15
 1965 ITASCA CO E. PELOGUIN
 SET A CO MONUMENT FROM WHICH
 ASH 5" S10W 1.54'
 ASH 7" N10E 12.7'
 1985 ITASCA CO G. FORDHAM
 NEW BT'S
 ASH 6" N25W 10.03'
 ASH 9" S55W 18.08'
 ASH 9" S50E 13.14'
 SIGN POST 3.6' WEST 4.8' EAST