

CORNER
RESTORATION
59N R26W



59N R26W BK 1

BOOK-1

Book # 1 of 4
T 59 N R 26 W

T 59 N R 26 W
S 1/4 Sec 16 T 59 N R 26 W
S 1/4 Sec 17 T 59 N R 26 W
S 1/4 Sec 18 T 59 N R 26 W
S 1/4 Sec 19 T 59 N R 26 W
S 1/4 Sec 20 T 59 N R 26 W
S 1/4 Sec 21 T 59 N R 26 W
S 1/4 Sec 22 T 59 N R 26 W
S 1/4 Sec 23 T 59 N R 26 W
S 1/4 Sec 24 T 59 N R 26 W
S 1/4 Sec 25 T 59 N R 26 W
S 1/4 Sec 26 T 59 N R 26 W
S 1/4 Sec 27 T 59 N R 26 W
S 1/4 Sec 28 T 59 N R 26 W
S 1/4 Sec 29 T 59 N R 26 W
S 1/4 Sec 30 T 59 N R 26 W
S 1/4 Sec 31 T 59 N R 26 W
S 1/4 Sec 32 T 59 N R 26 W
S 1/4 Sec 33 T 59 N R 26 W
S 1/4 Sec 34 T 59 N R 26 W
S 1/4 Sec 35 T 59 N R 26 W
S 1/4 Sec 36 T 59 N R 26 W
S 1/4 Sec 37 T 59 N R 26 W
S 1/4 Sec 38 T 59 N R 26 W
S 1/4 Sec 39 T 59 N R 26 W
S 1/4 Sec 40 T 59 N R 26 W
S 1/4 Sec 41 T 59 N R 26 W
S 1/4 Sec 42 T 59 N R 26 W
S 1/4 Sec 43 T 59 N R 26 W
S 1/4 Sec 44 T 59 N R 26 W
S 1/4 Sec 45 T 59 N R 26 W
S 1/4 Sec 46 T 59 N R 26 W
S 1/4 Sec 47 T 59 N R 26 W
S 1/4 Sec 48 T 59 N R 26 W
S 1/4 Sec 49 T 59 N R 26 W
S 1/4 Sec 50 T 59 N R 26 W
S 1/4 Sec 51 T 59 N R 26 W
S 1/4 Sec 52 T 59 N R 26 W
S 1/4 Sec 53 T 59 N R 26 W
S 1/4 Sec 54 T 59 N R 26 W
S 1/4 Sec 55 T 59 N R 26 W
S 1/4 Sec 56 T 59 N R 26 W
S 1/4 Sec 57 T 59 N R 26 W
S 1/4 Sec 58 T 59 N R 26 W
S 1/4 Sec 59 T 59 N R 26 W
S 1/4 Sec 60 T 59 N R 26 W
S 1/4 Sec 61 T 59 N R 26 W
S 1/4 Sec 62 T 59 N R 26 W
S 1/4 Sec 63 T 59 N R 26 W
S 1/4 Sec 64 T 59 N R 26 W
S 1/4 Sec 65 T 59 N R 26 W
S 1/4 Sec 66 T 59 N R 26 W
S 1/4 Sec 67 T 59 N R 26 W
S 1/4 Sec 68 T 59 N R 26 W
S 1/4 Sec 69 T 59 N R 26 W
S 1/4 Sec 70 T 59 N R 26 W
S 1/4 Sec 71 T 59 N R 26 W
S 1/4 Sec 72 T 59 N R 26 W
S 1/4 Sec 73 T 59 N R 26 W
S 1/4 Sec 74 T 59 N R 26 W
S 1/4 Sec 75 T 59 N R 26 W
S 1/4 Sec 76 T 59 N R 26 W
S 1/4 Sec 77 T 59 N R 26 W
S 1/4 Sec 78 T 59 N R 26 W
S 1/4 Sec 79 T 59 N R 26 W
S 1/4 Sec 80 T 59 N R 26 W
S 1/4 Sec 81 T 59 N R 26 W
S 1/4 Sec 82 T 59 N R 26 W
S 1/4 Sec 83 T 59 N R 26 W
S 1/4 Sec 84 T 59 N R 26 W
S 1/4 Sec 85 T 59 N R 26 W
S 1/4 Sec 86 T 59 N R 26 W
S 1/4 Sec 87 T 59 N R 26 W
S 1/4 Sec 88 T 59 N R 26 W
S 1/4 Sec 89 T 59 N R 26 W
S 1/4 Sec 90 T 59 N R 26 W
S 1/4 Sec 91 T 59 N R 26 W
S 1/4 Sec 92 T 59 N R 26 W
S 1/4 Sec 93 T 59 N R 26 W
S 1/4 Sec 94 T 59 N R 26 W
S 1/4 Sec 95 T 59 N R 26 W
S 1/4 Sec 96 T 59 N R 26 W
S 1/4 Sec 97 T 59 N R 26 W
S 1/4 Sec 98 T 59 N R 26 W
S 1/4 Sec 99 T 59 N R 26 W
S 1/4 Sec 100 T 59 N R 26 W

rich
d

Book # 1
T59N R26W

T59N R26W
4th P.M. ITHACA COUNTY
BOOK #1

		23	22	21	20			
		25	24	23	25			
32	6	5	4	3	2	1		
		27 19 18						
15	7	13	9	8	9	10	11	12
16		12	10					
14	17	11 37					1	2
36		17	16	15	14	13		
		7	6	3	26			
		4	8					
19		20	5	21	22	23		29
	18		40	62	61	28	53	46
	72	76	75	64	29	34	46	47
30	70	79		28	30	55	27	25
	71	77	78	67	31			
	69	73	34	57	58	56	50	49
31		32	33	34	35	36		

Colored numbers refer to page on which notes for that corner may be found

J-21

Affidavit RHM

J-21

Cor. Sec. 11-12-13-14

Notes of Surveyor Frank Wray in 1950 on
Record in Itasca Co. Surveyors Office.

Aspen 7" N17°E 19.7' (Now 11" Aspen stub w/ scribe
& 11 BT visible N14°E 19.7')

Aspen 7" N95°W 27.8' (Now 9" w/ scribe grown
over N39°W 27.8')

Aspen 9" S71°W 11.8' (Now stp. w/ scribe "BT" visible
S75°W 11.8')

Aspen 7" S35°E 15.8' (Now 10" Aspen w/ scribe grown
over S30°E 15.8')

Iron (Found a 1" dia. 24" Long rod at cor.)
remains of a squared scribed post beside cor.
I set a 2" inside dia. 5' long gal. wrought iron
pipe capped w/ a 3" dia. bronze T59N R26W
Tablet stamped:-

511 512
519 513
1961
R.L.S. NO. 3628

From which bears:-

Aspen 7" N24°E 14.73' MKD S12 BT

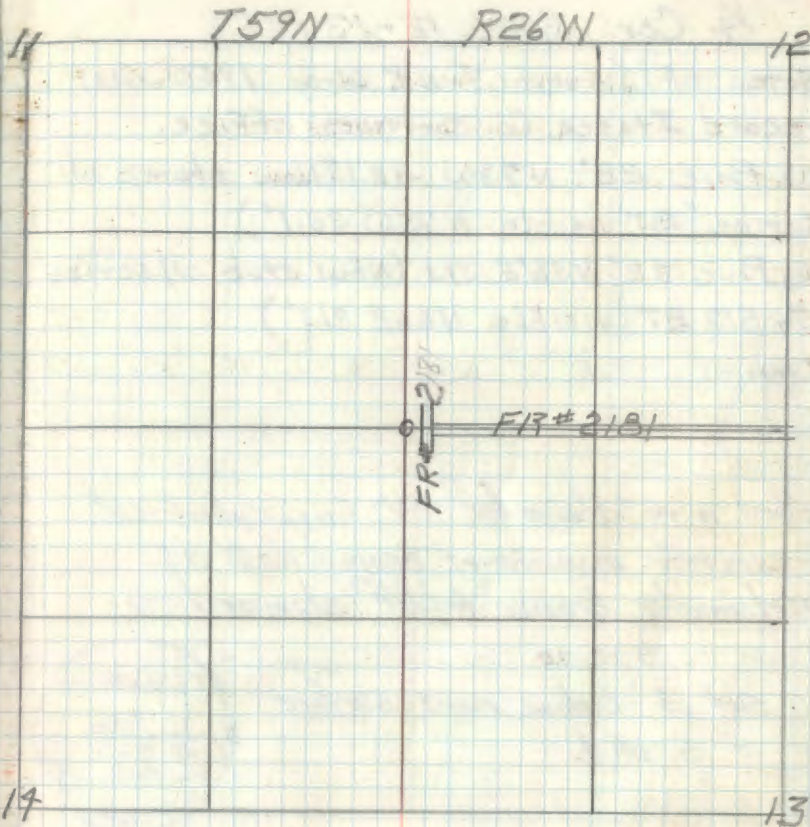
Aspen 9" S27°W 14.25' MKD S14 BT

Cedar post N54°W 2.40'

Cedar post S54°E 2.43'

posts are 4" x 4" x 6.5' long penta-treated w/
red tops.

12/26/61 R.H. McDonald



FS metal location poster is on a 16" Aspen
from which cor bears S80°W 2.9' - Also
poster on west side of FR. 2181 which
is 51.9' East of corner.

12-62
O.K.
R.H. McDonald

* July 1, 1982 Itasca County did work on this corner
see Certificate

3 N-8

Affidavit RLS

E $\frac{1}{16}$ Cor. Sec. 17-20Notes of Co. Surveyor Lloyd W. Johnson 1932
ON record Itasca Co. Courthouse.Cedar Stp. 15" N23E 67.0' (Now remains of
Cedar stp N30E 67.0')Cedar stp 20" N26W 73.8' (Now 20" cedar
stp w/ scribe "E $\frac{1}{16}$ S17 BT" visible N18W 73.8')Iron - Found 1" x 24" I.P. marking corner.
Squared scribed post on ground beside corner.Set a 6" dia. 5' Long cylindrical concrete
mon. capped w/ a 3" dia. bronze tablet
stamped

T59NR26W

E $\frac{1}{16}$ S 17E $\frac{1}{16}$ S 20

1961

RLS NO 3628

From which bears

Ash 6" N79W 71.85 MKD. E $\frac{1}{16}$ S17 BTCedar post 4" x 4" x 6.5' penta-treated w/
red top South 7.5'

7/5/61 R.A. McDonald

T59N

R26W

1324.0'	1332.68'	1392.6	1332.75	1332.75	1370.7
			F.S.		
			1334.92	1334.92	
					1370.7
					1314.4
					1314.4

To perpetuate this cor I cut New BT's

Birch 6" N32W 7.30' E $\frac{1}{16}$ S17 BT

Balsam 8" N65E 5.04' E $\frac{1}{16}$ S17 BT

Aspen 5" S54E 10.31' E $\frac{1}{16}$ S20 BT

Steel post 8" South 5.7' w/signs 54-2-5479

5/8/80
Ronald Olson

RR-7150-4 by R. Olson 5/8/80

F.S. metal location poster on
4" birch from which corner
bears S38°E 7.1'1-12-62
P.A. Wilson

40-8 Affidavit RHM

0-8

N.E. $\frac{1}{16}$ Sec. 20Notes of Co. Surveyor Lloyd W. Johnson
in 1932 on file Itasca Co. Courthouse.Iron mon. (Found 1" pipe in place at old fence
Spruce 10" S14E 20.7' (Now remains of Spruce
stump & windfall w/ blaze facing cor.)Spruce 9" S79W 25.8' (Now spruce windfall
w/ scribe " $\frac{1}{16}$ #1" visibleA squared scribed cedar post was found
beside pipe. 7/11/61 RHMSet a 2" inside dia. 5' long gal. wrought iron
pipe filled w/ concrete and capped with a
3" dia. bronze tablet stamped:-

T59N R26W

NE $\frac{1}{16}$ S20

1961

RLS NO 3628

Ash 4" N30W 50.1' MKD S20 BT

W. Pine 9" S53E 59.4' MKD NE $\frac{1}{16}$ S20 BT

12/26/61 R.H. McDonald

T59N

R26W

To bring this corner to Standard I cut new BT
Ash 5" N52E 56.10' NE $\frac{1}{16}$ S20 BT
Steel post 8" North 4.5' 54-2 & 54-9

R9-7150-4 by Olson

5/9/80

Ronald Olson

1-12-12
OK
R. G. Wells

5 p. 9 Heidavit RHM

P-9

Quarter Corner Sec. 20-21

Notes of Itasca Co. Surveyor Lloy W. Johnson in 1932.

Set iron monument (

N. Pine 12" S60°E 18.90' (Now a 17" N. Pine S53°E 18.9' scribed "1/4 S19 BT")

N. Pine 10" S26°W 29.2' (Now a 17" N. Pine S34°W 29.2' scribed "S20 BT")

Original Govt. survey of 1879

N. Pine 18" S60°E 42 Lks (27.72')

N. Pine 15" West 46 Lks (30.36')

Set a 2" inside dia. 5' Long gal. wrought iron pipe filled w/ concrete & capped w/ a 3" dia. bronze tablet stamped:

T59N R26W
1/4
S20 | S21
1961
RLS. NO 3628

From which bears

Red Pine 12" S75 1/2°W 34.7' MKD 1/4 S20 BT

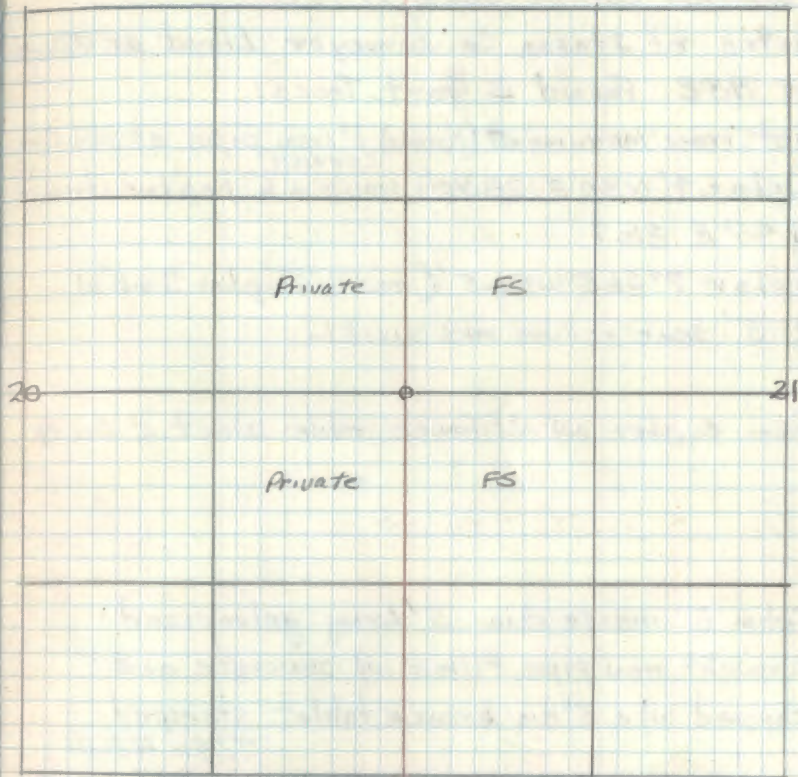
Red Pine 13" S76°E 14.35' " 1/4 S21 BT

12/26/61 RHM Donald

Steel sign post 72" long w/ F.S. standard signs 54-2 & 54-4 attached set North 3.1 Ft.

5/29/67 RHM Donald

T59N R26W



Monument & BT'S O.K.
5/9/80 Ronald Olson
R9-700-4 by Olson

1-12-62
out.
R.A. Walker

6 N-7 Affidavit RHM

Quarter Corner Sec's 17-20

Notes of Itasca Co. surveyor Lloyd W. Johnson
in 1932. Found 2 Gov't. Trees;

Set iron monument (found 1" iron pipe at old fence
Poplar $4^{\circ} N 40^{\circ} E$ 28.70' (now a 6" poplar stump.
N $45^{\circ} E$ 28.7'

Poplar $7^{\circ} S 65^{\circ} W$ 21.5' (Now 11" Poplar S $68^{\circ} W$
21.5' some scribe mks visible

From corner an old fence runs West & South

Set a 2" inside dia. 5' Long galvanized
wrought iron pipe filled w/ concrete and
capped w/ a 3" dia bronze tablet stamped

T59N R26W

$\frac{1}{4}$ S17

S20

1961
RLS NO 2628

N $34^{\circ} E$ 220

White Spruce 18" N $40^{\circ} E$ 93.7' mxd $\frac{1}{4}$ S17 BT

Birch 6" S $26^{\circ} E$ 30.4' mxd $\frac{1}{4}$ S20 BT

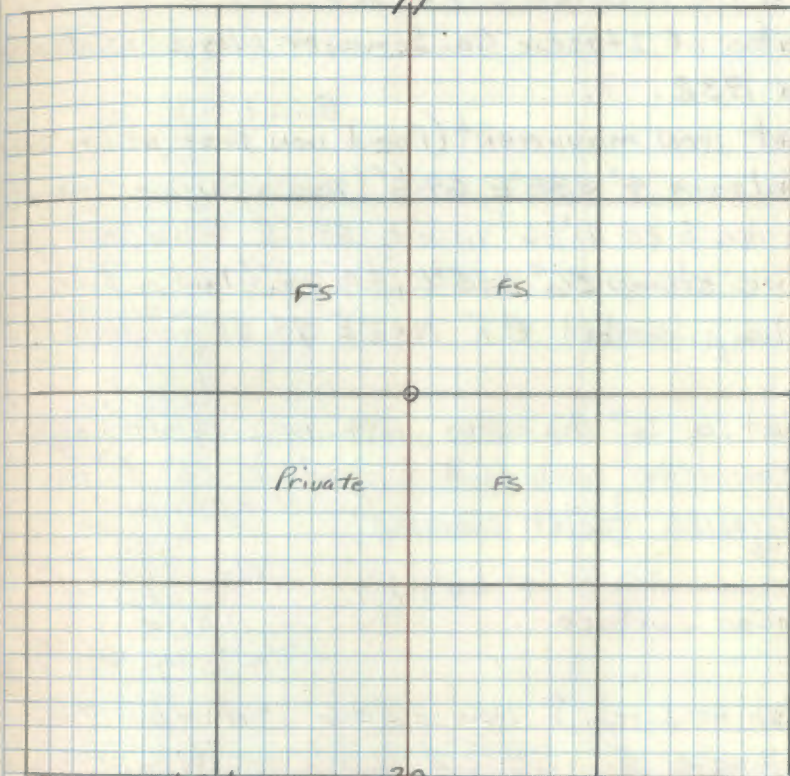
Cedar post 4" x 4" x 6.5' penta-treated w/
red top West 3.5'

12/27/61 R.H. McDonald

T59N

R26W

17



To perpetuate this corner ²⁰ set New BT =

Balsam 8" S66W 29.85' $\frac{1}{4}$ S20 BT

Birch 10" S34E 17.74' $\frac{1}{4}$ S20 BT

Aspen 5" N60E 21.02' $\frac{1}{4}$ S17 BT

Steel Post 8" west 6.2' 54-2 & 54-9

RR 7150-4 by design

5/28/50

Ronald Olson

1/2
0.4
G. Walker

7 N-6

N-6

W 1/16 Sections 17-20

Notes of Itasca Co. Surveyor Lloyd W. Johnson
in 1932.

Set iron monument (Found iron pipe, marking corner) ^{Buried under road.}
Balsam 4' S88°E 64.6' (Now a balsam windfall
scribe S 20 W 1/16 visible S81°E 64.6 feet.)
Pine stump 36" N35°E 44.25' (Now a pine
stump scribed BT N42°E 44.25 feet.)

Set a 6" diameter, 24" long cylindrical
concrete monument capped with a 3" dia.
bronze tablet stamped: T59N R26W

Notes
Monument set 4" below
road surface.

W 1/16 S 17
1965
RLS NO 6807

White birch 7" N36 1/2°E 53.6' MKD W 1/16 S 17 BT

Maple 5" S80 1/2°E 71.6' MKD W 1/16 S 17 BT

Cedar post 4" x 4" x 72" with standard FS.

Signs 54-2 & 54-4 attached set East 14.5'

June 22, 1965 RHM Donald

To bring this corner to standard I cut NW BT

Birch 8" N63°E 48.12' W 1/16 S 17 BT

Power Pole 574E 44.15 B0

Steel post 8' East 19.9' 54-2 & 54-9

RA-71504 by Olson

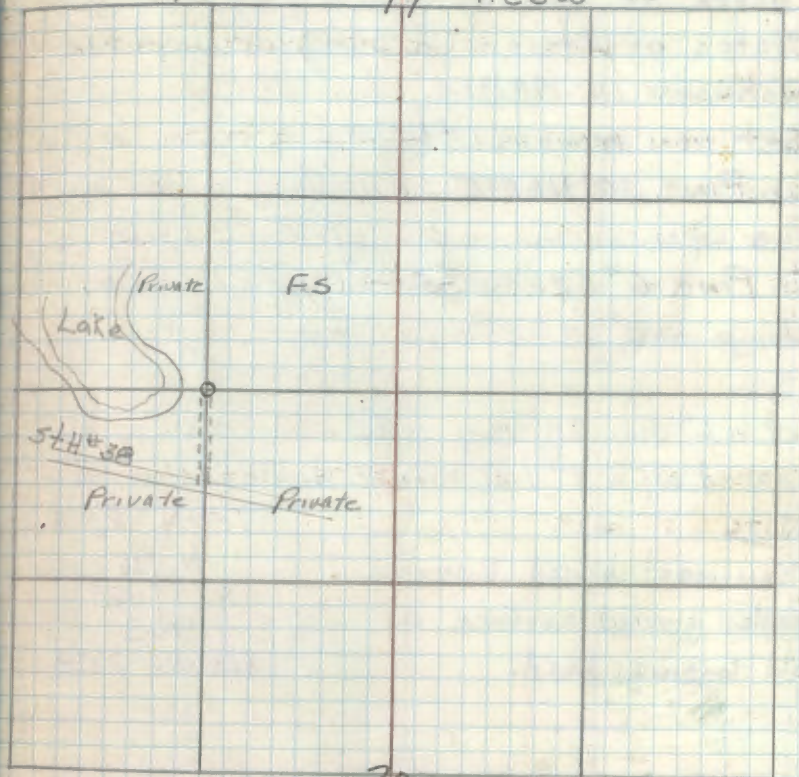
5/8/80 Ronald Olson

Affidavit RHM

T59N

17

R26W



20

8 0-9

North $\frac{1}{16}$ Section 20-21

Notes of Itasca Co. Surveyor Lloyd W. Johnson in 1932:-

Set iron monument (not found) — ^{Ed 2nd S. of} ^{Cor. 1888 etc.}
 W. Pine 10" N65°E 22.10' (Now a 18" W.
 Pine w/ scribe overgrown N72°E 22.1 feet
 W. Pine 6" S22°W ^{26.1}25.60' (Now a W. Pine
 stump MKD "BT" S28 $\frac{1}{2}$ °W ^{26.1}25.6 Ft.)

Set a 6" dia. 24" long cylindrical concrete mon.
 capped w/ a 3" dia. bronze tablet stamped

Plate
 Monument buried 2 inches
 under ground surface in
 old logging road.

T59N R26W

N $\frac{1}{16}$

S20 | S21

1962

PLS NO 3628

Steel sign post 72" long set 24" in ground w/ signs
 54-2 & 54-4 attached due North 3.3 feet

W. Pine 11" N49°E 28.6 Ft. MKD N $\frac{1}{16}$ S21 BT ✓

W. Pine 10" S83°W 20.6 Ft. MKD N $\frac{1}{16}$ S20 BT ✓

Red Pine 16" S13 $\frac{1}{2}$ °E 23.4 Ft. MKD N $\frac{1}{16}$ S21 BT ✓

11-7-62 *R.N. McDonald*

Monument & BT's OK.

5/9/80. Ronald Olson

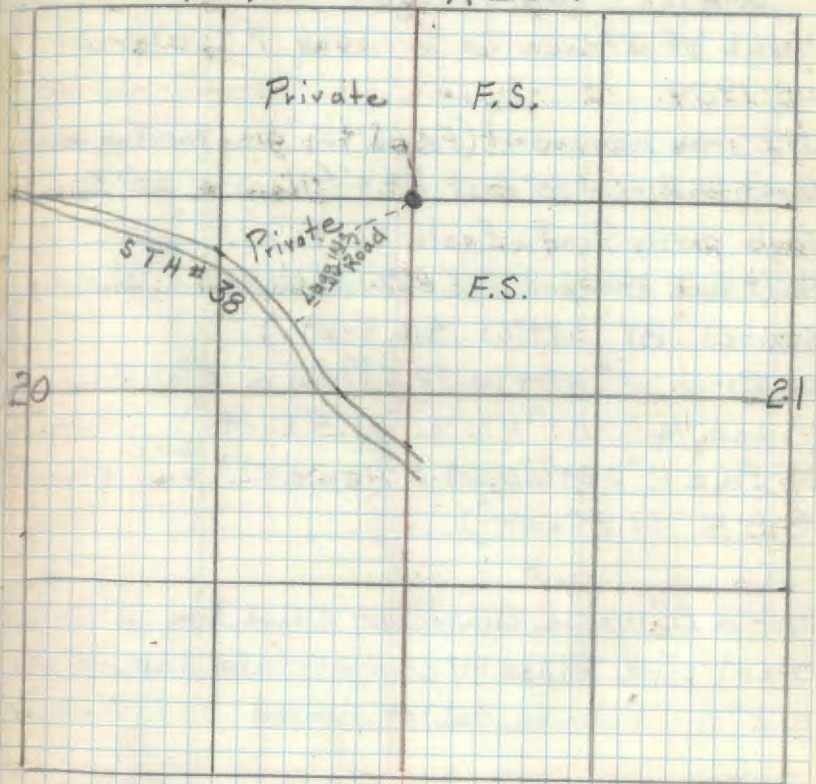
89-7157-4 by Olson

Affidavit RHM

0-9

T59N

R26W



Ronald Olson
 5/9/80

9 G-5

Quarter corner Sections 7-8

Notes of Itasca Co. Surveyor P.C. Warner
in 1939.Set iron monument (Found $1\frac{3}{4}$ " dia. Marking corner)✓ Gov't w. Birch 20" East 24.4' (Now a 20" Birch
Stub partly dead East 24.4')✓ Gov't w. P. stump 22" S 66°W 4.6' (Now a ^{Pine} stump
scribed "BT" S 74°W 4.6 feet.)✓ W. Birch 12" N 84°W 32.5' (Now a 15" W. Birch
scribed "1/4 S 7 BT" N 75°W 31.5 feet.)✓ W. Pine 12" S 24 $\frac{1}{2}$ °E 33.5' (Now a 22" ^{White} pine stump
S 18°E 33.5 feet.)Set a 2" inside diameter 5 foot long galvanized
steel pipe filled w/ concrete and capped w/
a 3" dia bronze tablet stamped T59N R26W

New BT's

S 7	S 8
1964	
RLS NO 6807	

✓ Cedar 11" S 56 $\frac{1}{2}$ °E 15.65' MKD 1/4 S 8 BTSteel sign post 72" long set 24" in ground w/
N.S. standard signs 54-2 & 54-4 attached due
South 5.0 feet.

✓ Cedar 14" N 54°W 59.1 feet MKD 1/4 S 7 BT

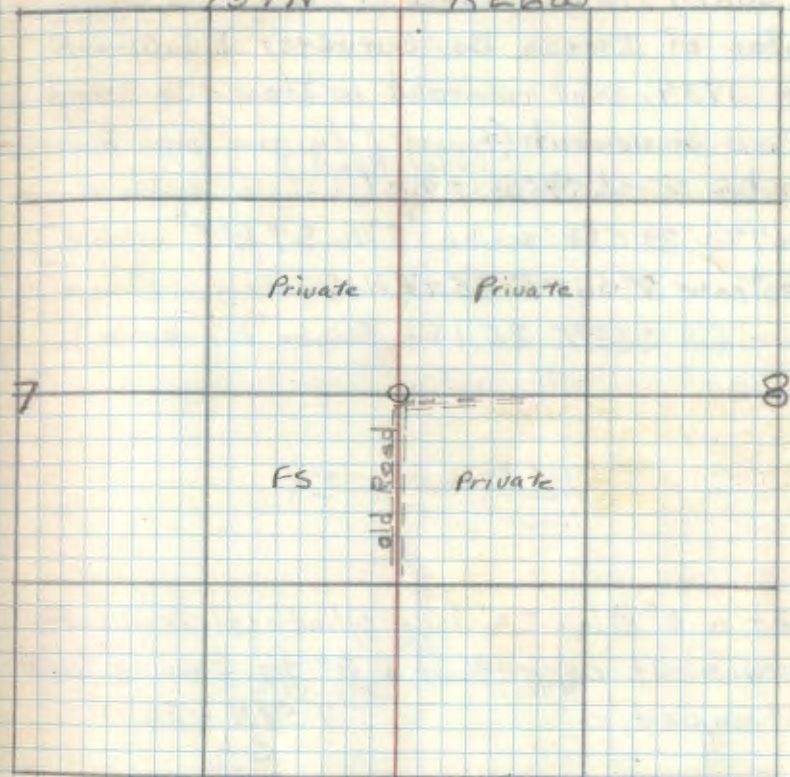
November 25, 1964
Bill Hill

Affidavit RHM

G-5

T59N

R26W



A Red and white painted $1\frac{1}{2}$ " dia. iron pipe
was found 4" south ^{East} of corner a line
marker from a private survey - several such
markers were found on adjacent lines.

See T59N R26W BK 4 pg ³⁵~~34~~

Bill Hill
11-22-64

10 H-5

South $\frac{1}{16}$ Sections 7-8

Notes of Itasca Co. Surveyor P.C. Warner
in 1939, plat recorded in Itasca Co Courthouse

Iron monument (Found 1" dia. iron pipe buried
under road.)

✓ Cedar 10" S65 $\frac{3}{4}$ °W 29.0 (Now a cedar stump
S67°W 29.0 ft. scribe "S $\frac{1}{16}$ S7 BT" visible.)

✓ Balsam 7" S63°E 25.1 (Now a balsam stump &
windfall S62°E 25.1 ft. Scribe "BT" visible.)

Set a 6" dia. 24" long cylindrical concrete
monument capped w/ a 3" dia. bronze tablet
stamped: -

T59N R26W

Note
Mon. set 6" below
road surface.

S $\frac{7}{16}$
VS 7 | S8
1964
RLS NO. 6807

✓ Cedar 8" N57°W 100.5' MKD S $\frac{1}{16}$ S7 BT

✓ Cedar 9" S51 $\frac{1}{2}$ °E 50.8 MKD S $\frac{1}{16}$ S8 BT

✓ Cedar post 4"x4"x72" set due West 17.0 feet
w/ std. signs 54-2 & 54-4 attached

11-6-64 *H. M. Donald*

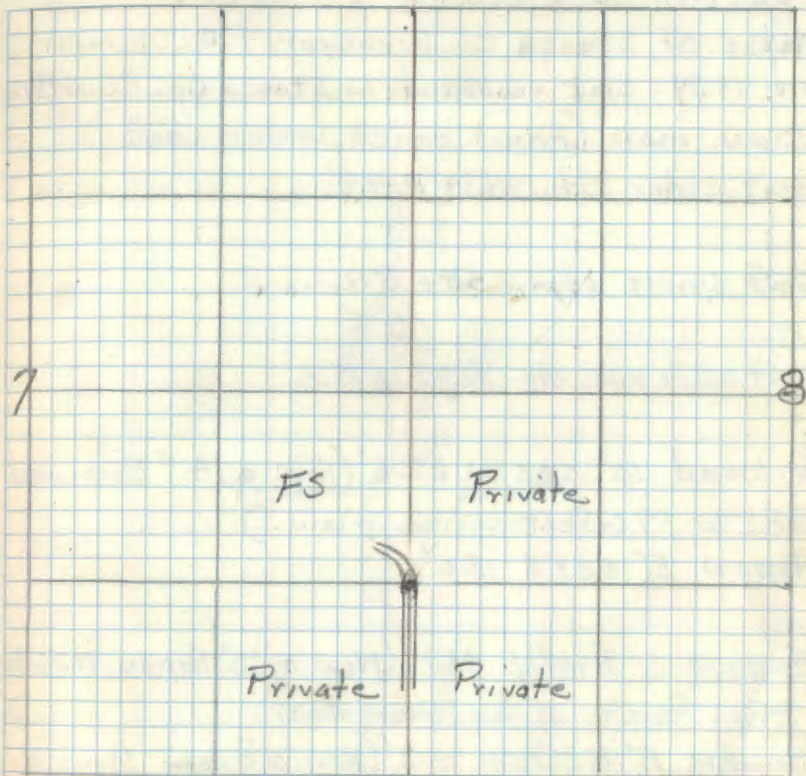
NOT
THERE

Affidavit RHM

H-5

T59N

R26W



See T59N R26W BK 4 pg 35

OK
2/10
11/12/67

11 J-5

Section Cor. 7-8-17-18

Notes of Itasca Co. Surveyor P.C. Warner
IN 1939 plat recorded in Itasca Co. Courthouse

Iron. mon. (Found buried under road.)

Gov't cedar stb. N34°E 9.9'

Gov't spruce stp. S40°E 5.9'

Gov't white pine stp. N57½W 15.8'

√B. Wood 10" S25°W 27.6' (Now a 14" Basswood
S32°W 27.6 feet scribe plain.)

Aspen 5" S89°E 18.0'

√Aspen 6" N46½E 45.1' (Now a 16" Aspen N56°E
45.1 feet. scribe overgrown)

√Balsam 8" N86½W 98.2' (Now a Balsam stump &
blowdown w/ scribe visible N78°W 98.2 feet.)

Set a 6" dia. 24" long cylindrical concrete
monument capped w/ a 3" dia. bronze tablet
stamped:-

T59N R26W

S 7 | S 8

✓ S 18 | S 17

1964

RLS NO 6807

Cap 6" Below surface
of Ground

11-22-67

Affidavit P.M.

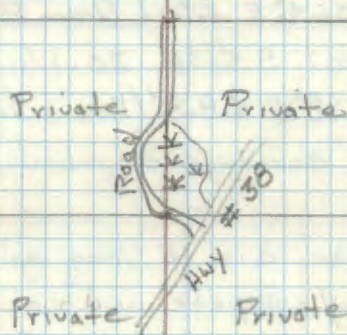
CERTIFICATE FILED

7

T59N

R26W

8



18

17

Cedar Post 4" x 4" x 72" set due south 17.8'
w/ std. F.S. sign 54-4 attached

New Bearing trees

Birch 7" N52°W 41.8 Ft MKD. S7 BT

Birch 6" S42½W 36.0 Ft MKD. S18 BT

Balsam 6" S41°E 33.5 Ft MKD. S17 BT

Balsam 5" N45°E 31.0 Ft MKD. S8 BT

11-6-64 G.H. McDonald

12 H-4

South East 1/16 Section 7

Notes of Itasca Co. Surveyor P.C. Warner
in 1939 plat recorded Itasca Co. Courthouse

Iron monument - (Found a 1 3/4" dia iron pipe for cap)

✓ Balsam 11" S64°E 20.1' (Now Balsam Stump
scribed 1/16 #718T S. 56°E 20.1')

✓ Balsam 8" N48°E 28.8' (Now a 12" Balsam
N58°E 28.8' scribe overgrown.)

Set a 2" inside dia 5' long galvanized steel
pipe filled w/ concrete and capped w/ a 3"
dia. bronze tablet stamped T59N R26W

✓ SE 1/16 S7
1969
RLS NO 6807

New BTs

✓ White pine 25" N72°E 65.8' MKD SE 1/16 S7BT

✓ White pine 16" N77 1/2°W 58.9' MKD SE 1/16 S7BT

✓ Steel sign post 72" long set 24" in ground w/

F.S. standard signs 54-2 & 54-4 attached

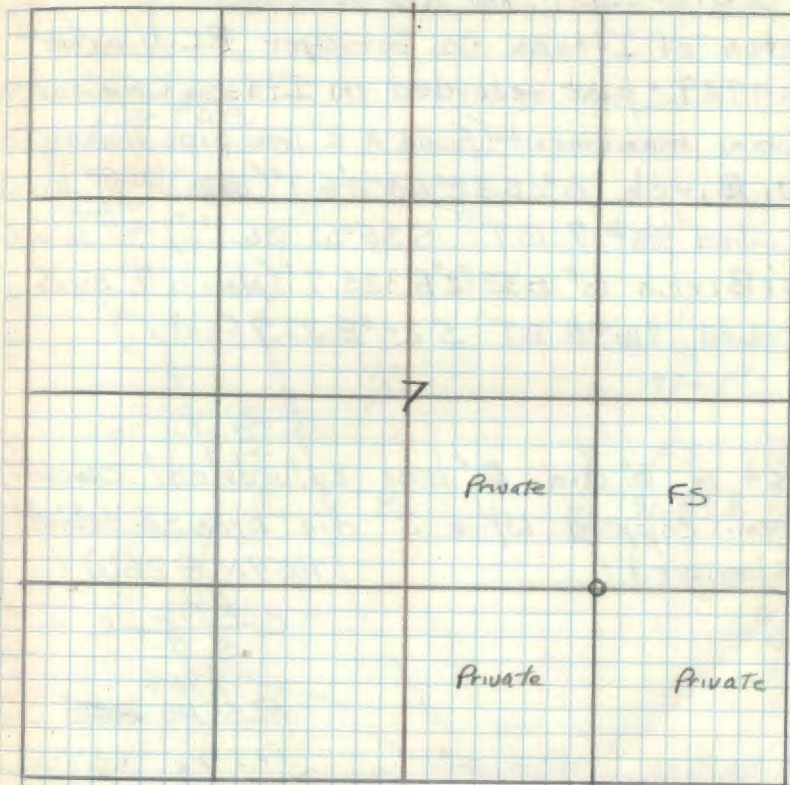
due North 5.0 feet

11-25-64 Robert H. Donald

Bill Heide

Affidavit RHM

H-4



OK
28.
11-22-67

13 G-4

Center East 1/16 Section 7

Notes of Itasca Co. Surveyor P.C. Warner
 in 1939. - plat recorded in Itasca Co. Courthouse
 Iron monument (Found a 2" iron pipe marking Cor.)
 W. Birch 6" S32°W 26.1' (Now a 6" birch
 scribed 1/16# 7 BT" S35°W 26.1'.) ^{Note} #7 is error
 W. Birch 6" S33 1/2°E 33.7' (Now a 7" birch
 scribed 1/16# 8 BT" S29°E 33.7 feet.)

Set a 6" dia. 5' long cylindrical concrete
 mon. capped w/ a 3" dia. bronze tablet
 stamped:

T59N R26W

C E 1/16 C

S 7

1964

R25 NO 2628

R25 No. 4307

✓ Cedar 9" S65°E 51.0 ft. MKD CE 1/16 S7 BT

✓ Cedar 8" N82°W 42.3 ft. MKD CE 1/16 S7 BT

Steel sign post 72" long set 24" in ground

✓ w/ signs 54-2 & 57-4 attached due East 4.6'

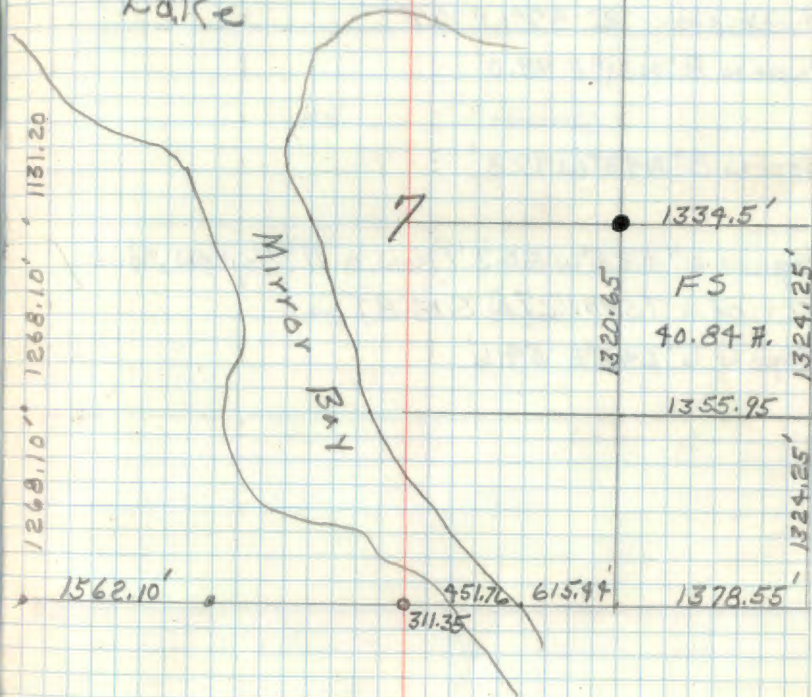
✓ Cedar post 4" x 4" x 6' set on North edge of
 road bears South 228.5'

11-6-64 Robert H. McDonald

Affidavit RHM

G-4

Section 7

Turtle
Lake
 2 1/2
 11/21/64

14 J-1 T59N R26-27W

Section Corner 7-18 & 12-13

Notes of Itasca Co. Surveyor P.C. Warner in

1939 - plat recorded in Itasca Co. Courthouse

Iron mon. -

Birch stb. $12^{\circ} 57' W$ 17.5'

Aspen $8^{\circ} N 31^{\circ} E$ 98.0'

Aspen $8^{\circ} N 43^{\circ} W$ 97.3'

Aspen $6^{\circ} S 25^{\circ} W$ 50.3' (Now a 11" Aspen stub.)

scribed T59N R27W S13 BT

Aspen $6^{\circ} S 43^{\circ} E$ 54.6'

T59N

R27W

R26W

12

7

FS

Private

FS

Private

13

18

15

T59N R26-27W

Quarter Corner Section 7-12

Notes of Itasca Co. Surveyor P.C. Warner
in 1939 - plat recorded in Itasca Co. Courthouse

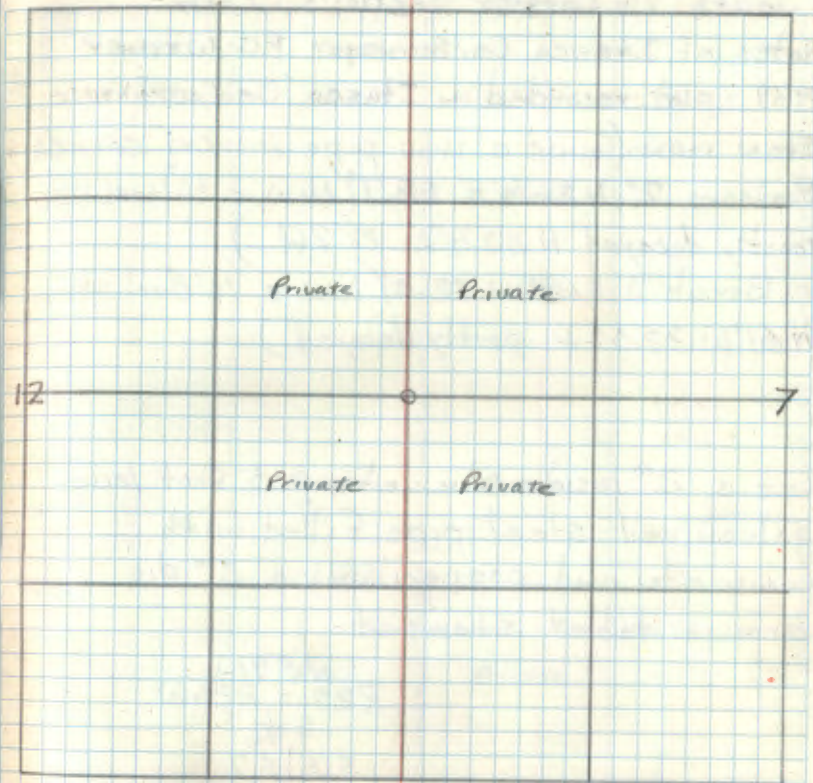
Iron mon.

Gov't Ash stp.

Gov't Cedar stp.

Elm 7" S69°E 22.5'

Ash 6" S55½°W 8.4'



16 H-1 T59N R26-27W

South 1/16 Corner Sections 7-12

Notes of Itasca Co. Surveyor P.C. Warner
1939 - plat recorded in Itasca Co. Courthouse

Iron man. (Found a iron pipe marking corner.)

Balsam 7" N26 1/4° E 28.7' (Now a balsam windfall
mostly decayed N33 1/2° E 28.7 ft.)

W. Birch 11" N68° W 32.0' (Now a 14" Birch stump
N61° W 32.0 ft. partly decayed.)

Set a 2" inside diameter, 5 foot long
galvanized steel pipe Filled with
concrete and capped with a 3" dia.
bronze tablet stamped:-

T59N
R27W R26W
S 7/16
S12 | S7
RLS 1965
No 6807

Balsam 7" N43 1/2° E 14.0 ft MKD S 1/16 S7 BT

Balsam 6" S37° W 38.3 ft MKD S 1/16 S12 BT

Steel sign post 72" long with F.S. standard signs

54-2 & 59-4 attached set south West 5.25 ft.

June 8, 1965 RHM McDonald

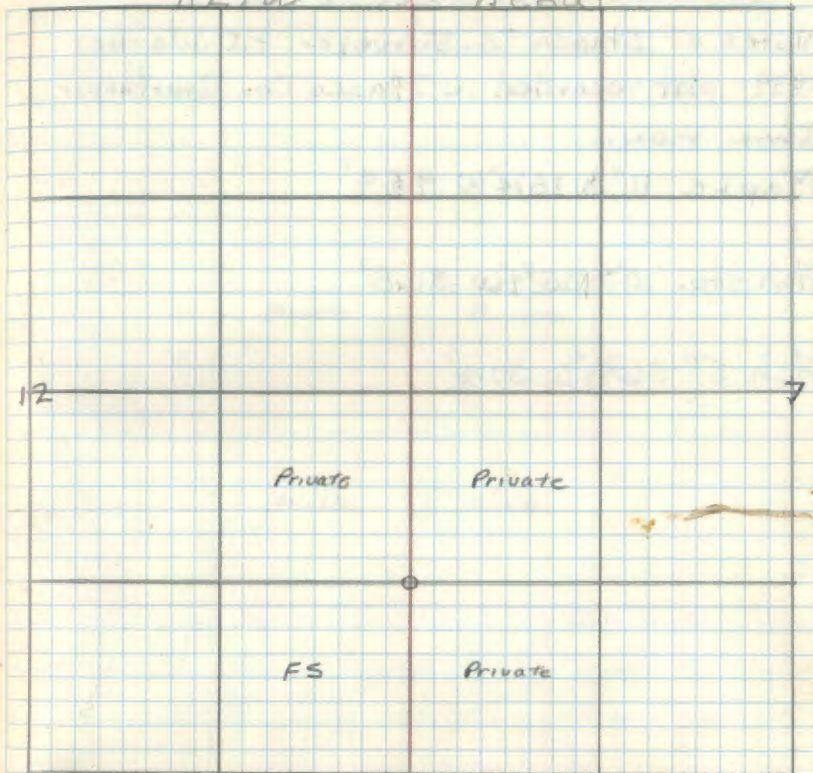
Affidavit RHM

T59N

H-1

R27W

R26W



17

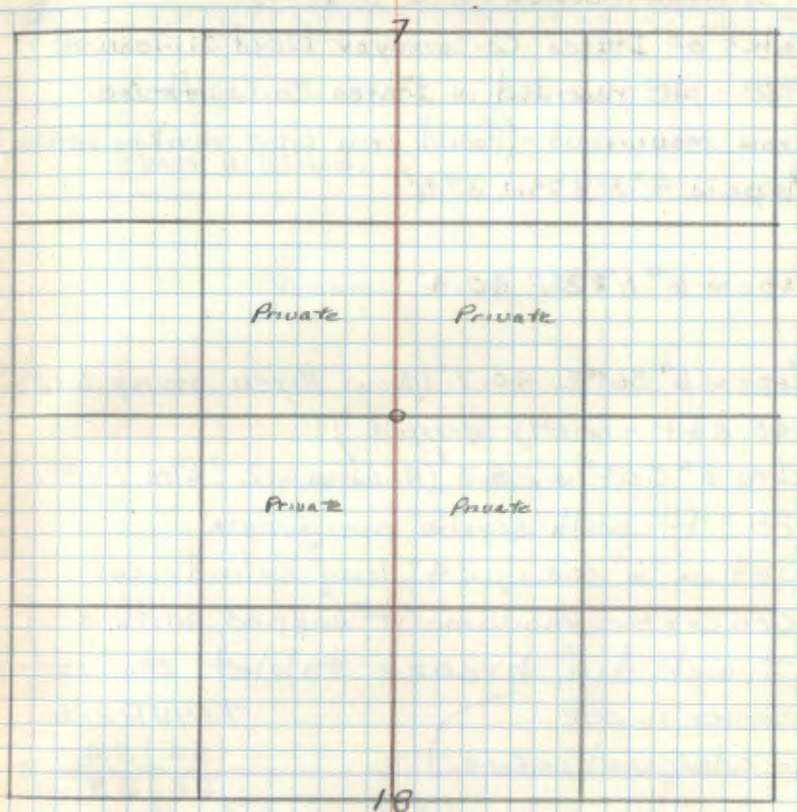
Quarter Corner Sec's 7-18

Notes of Itasca Co. Surveyor P.C. Warner
1939 - plat recorded in Itasca Co. Courthouse

Iron mon.

Maple 11" N18 $\frac{1}{4}$ °W 43.9'Ash stp. 10° S35 $\frac{1}{4}$ °W 31.8'Ash 5" S6 $\frac{3}{4}$ °W 30.6'

CERTIFICATE FILED



18 E-9

Section Corner 4-5-8-9

Notes of Itasca Co. Surveyor Lloyd W. Johnson
1938 - plat recorded in Itasca Co. Courthouse.Iron monument - (Found iron pipe marking corner)
Aspen 8" N 37° W 37.6' buried in road

Aspen 6" N 32° E 40.4'

Aspen 6" S 61° E 40.7' (Now Aspen stump S 52° E
40.8 Ft - mostly decayed.)Elm 3" S 04° W 28.3' (Now a 12" Elm S 12° W
28.3 Ft with scribe overgrown.)Set a 6" dia., 24" long cylindrical
concrete monument capped with a
3 inch dia bronze tablet stamped:(Corner is set
6" below road surface.)T59NR26W
S5 | S4
S8 | S9
1965
RLS NO 6807

Elm 6" N 15° E 59.25 Ft. MKD 54 BT

Elm 6" S 33° E 42.4 Ft. MKD 59 BT

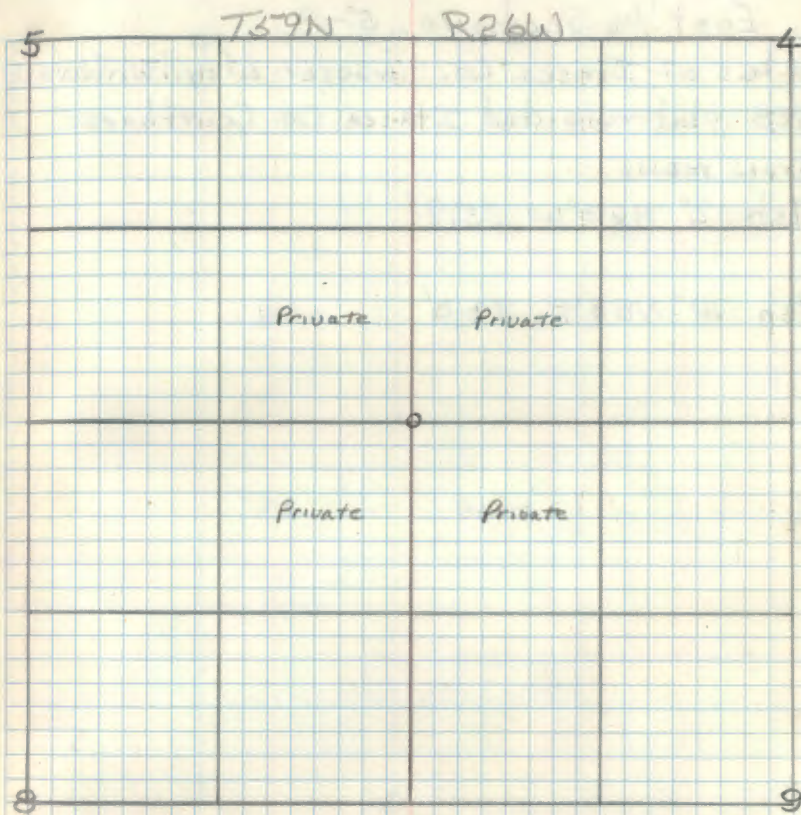
Elm 12" S 10° W 28.3 Ft. old Co. BT

Ash 8" N 48° W 73.0 Ft MKD 59 BT

Cedar post 4" x 4" x 72" with FS standard sign
54-4 attached set North 20.2 feet.June 3, 1965 *A.M. Donald*

Affidavit RHM

E-9



8-30-83 B. Ausk G. Robertson

All TREES ARE still standing

19

East 1/16 Sections 5-8

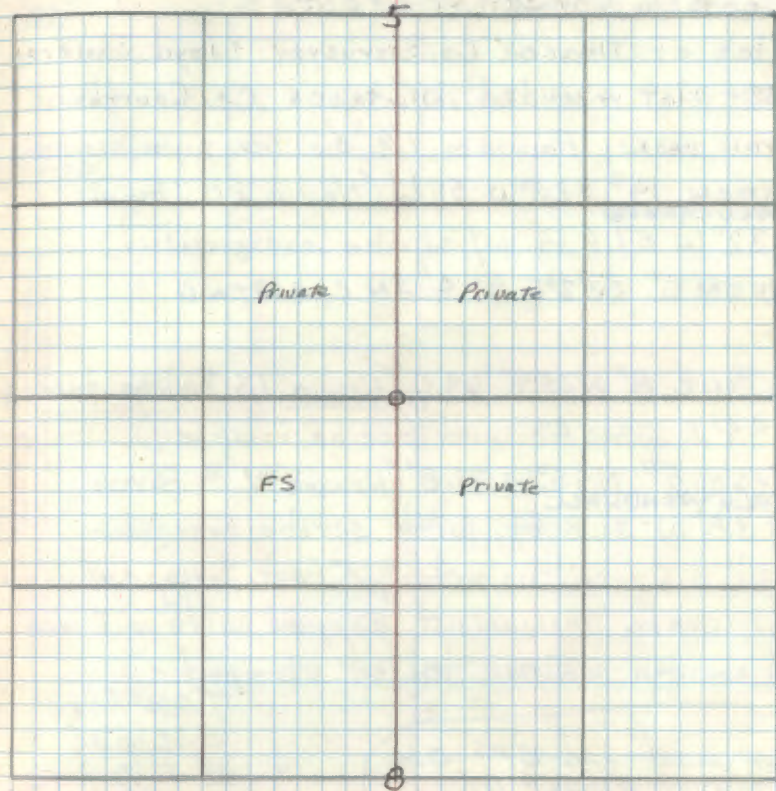
Notes of Itasca Co. Surveyor Lloyd W. Johnson

1938 - plat recorded Itasca Co. Courthouse

Iron mon.

Ash 12" N63°W 35.7'

Ash 10" N03°E 34.0'



21 A-8 T59-60N R26W

East 1/16 Sections 5-32

Notes of Itasca Co. Surveyor Lloyd W. Johnson

1938 - plat recorded Itasca Co. Courthouse.

Iron mon. (Found a 1/4" dia. iron pipe marking corner.)

✓ N. Pine 12" N51°W 71.7' (Now a 19" Red pine

✓ N 44°W 71.7 feet with scribe visible.)

✓ N. Pine 6" S21°W 97.25' (Now a 10" red pine
windfall scribed "1/16 S.5 BT" S28°W 97.25 feet.)

Set a 6 inch diameter, 24" long cylindrical
concrete monument capped with a 3 inch
diameter bronze tablet stamped: T60N R26W

E 1 S.32

16 S 5

T59N

PLS 1965 6807
ND

Set monument 6"

below road surface.

✓ Co. Red pine 19" N44°W 71.7 Ft. w/ Co. scribe

✓ White spruce 13" S76°W 125.3' MKD E 1/16 S.5 BT

✓ 4" x 4" x 72" cedar post w/ F.S. standard sign

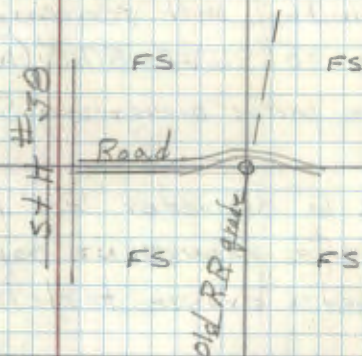
54-4 attached set due west 2 feet

May 26, 1965 R.H. McDonald

Affidavit RHM

A-8

32



12-05-2009 R.MAIN

FD CORNER IN PLACE AND GPS. 1965 W. SPRUCE
NOW A ROTTED STUMP. COUNTY RED PINE NOW
24" MARK ONE NEW BT

R. PINE 6" N13°E 74.55 FT TO SPK MKD S32 BT

5

OK
28
11/2/67

22 A-7 T59-60N R26W

Quarter Corner Sec's 5-32

Notes of Itasca Co. Surveyor Lloyd W. Johnson

1938 - plat recorded Itasca Co. Courthouse

Iron mon. (corner falls in road, pipe not found)

Balsam 7" N10°E 73.8' (Now a Balsam stump and windfall with scribing visible N21°E 73.8')

Birch 15" S61°E 57.0' (Now a 10" Birch with scribe partly overgrown S 54½°E 57.0' Feet)

Set a 6" diameter 24" long cylindrical concrete monument capped with a 3" diameter bronze tablet stamped

Monument is set 10" below road surface

T60N R26W

1 S 32

4 S 5

T59N

1965

RLS NO 6807

Monument hit by grader, re-set 12" below road 4/30/81

Maple 5" S58°E 87.8 Ft. MKD ¼.55 BT ✓

Cedar 9" N76°E 116.6 Ft. MKD ¼.532 BT ✓

Cedar post 4"x4"x72" with standard FS. ✓

Signs 54-2 & 54-4 attached set due South 18.1 Ft.

June 1, 1965 A.H. McDonald

BTS OK. 4/30/81

Ronald Olson

R9-7150-4 by Olson

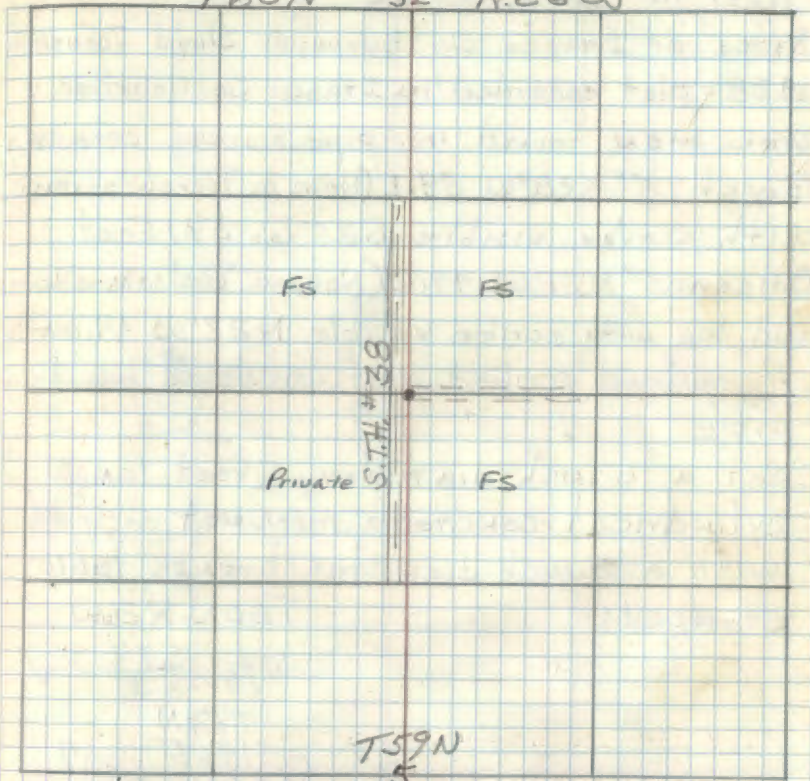
Olson
7/2/67

Affidavit RHW

A 7

2-A

T60N 32 R26W



Corner is buried under road leading to Camp Maumee.

23 A-6 T59-60N R26W

West 1/16 Sec's 5-32

Notes of Itasca Co. Surveyor Lloyd Johnson
1938 - plat recorded in Itasca Co. Courthouse

Iron mon. found iron pipe marking corner
Birch 5" S28°W 59.1' (Now a Birch stump
with scribe visible S35°W 59.1 Feet.)
Balsam 5" N31°W 49.6' (Now a Balsam stump
and log with scribe visible N23°W 49.6 Ft.)
A squared scribed post was found beside
pipe.

Set a 6 inch diameter, 5 foot long
cylindrical concrete monument capped
with a 3 inch diameter bronze tablet
stamped:-

T60N R26W

W 1/16 S32 55 V

T59N

RLS 1965 NO 6807

Balsam 7' N21°E 54.05' MKD W 1/16 S32 BT
White pine 9" S48°W 22.7' MKD W 1/16 S5 BT
Steel sign post 72" long with F.S. standard
signs 54-2 & 54-4 attached set west 7.1 Ft.
White pine 6" N82°E 92.2' MKD W 1/16 S32 BTV

June 1, 1965 (RAM Donald)

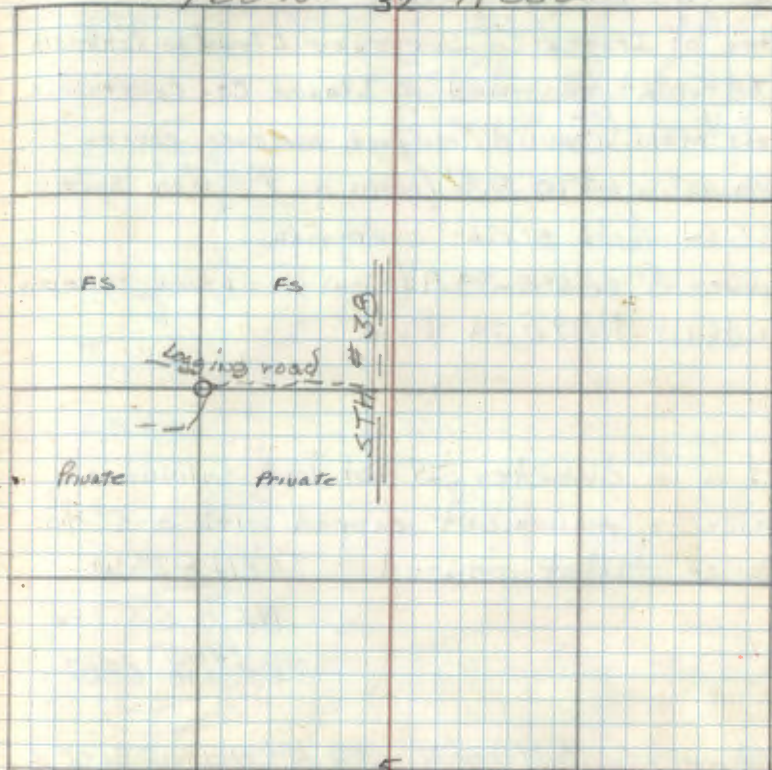
monument & BTE OK. 4/30/81 Ronald Olson

R9-7150-4 by Olson

Affidavit RAM

A-6

T60N 32 R26W



T59N

Handwritten signature/initials
1/20/67

24 B-8

North East 1/16 Section 5

Notes of Itasca Co. Surveyor Lloyd W. Johnson
1938 - plat recorded in Itasca Co. Courthouse

Iron mon. (Found iron pipe marking corner)

✓ Ash 6" S63°W 5.6' (Now a 9" Ash S69°W
5.6 ft. with scribe overgrown.)

✓ Spruce 8" S86°E 34.9' (Now a spruce stump &
windfall N89°E 34.9 ft.)

Set a 6" diameter, 5 foot long cylindrical
concrete monument capped with a 3" dia.
bronze tablet stamped T59NR26W

✓ NE 1/16 S5
RLS 1965
NO 6807

✓ Cedar 6" N65°E 59.5' MKD NE 1/16 S5 BT

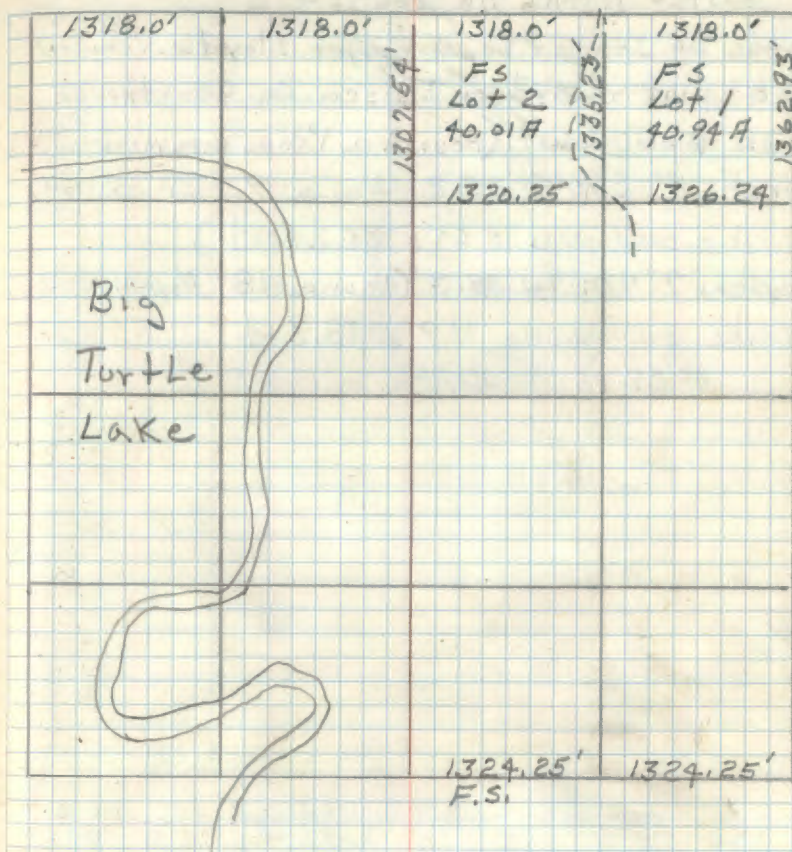
✓ Cedar 8" S56°E 43.6' MKD NE 1/16 S5 BT

✓ Steel sign post 72" long with standard F.S.
signs 54-2 & 54-4 attached set West 4.4'
Cedar post 4" x 4" x 72" set along west side
of logging road East 195.7 Feet

June 17, 1965 A.H. McDonald

Affidavit RHM

B-8



25 B-7

Center North 1/4 Section 5

Notes of Itasca Co. surveyor Lloyd W. Johnson

A38 - plat recorded Itasca Co. Courthouse

Iron monument. (Found a 1" dia. pipe marking ^{Corner})

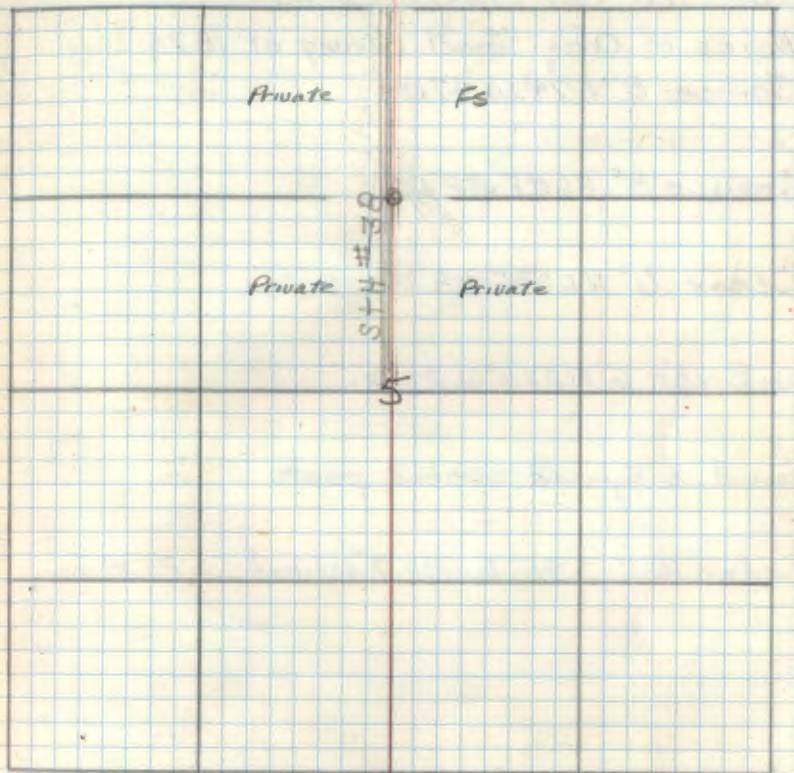
Birch 3" S 70° E 35.2' Now a 9" Birch with

scribe overgrown S 64° E 35.2 feet.)

Aspen 7" N 02° W 38.3' (Now a 18" Aspen with

scribe overgrown N 9° E 38.3 ft.

5-27-65 J. M. Donald



Corner is approx. 20' East of Hwy 38
Corner is also marked by a squared scribed
white wood post set in concrete.

26 N-9

Section Cor. 16-17-20-21
Notes of Orig. Govt. Survey of 1874
Spruce 8" S74°W 47 Lks

Spruce 8" S60°E 32 Lks.

Cedar 6" N62°E 28 Lks

W. Birch 6" N22½°W 22 Lks

Found a Squared scribed post

Cedar 12" S45°E 102.7' scribed S 21 BT

17

16

Private

Private

Private

Es

20

21

27

Quarter Corner Sections 5-8

Notes of Itasca Co. Surveyor Lloyd W.

Johnson in 1938

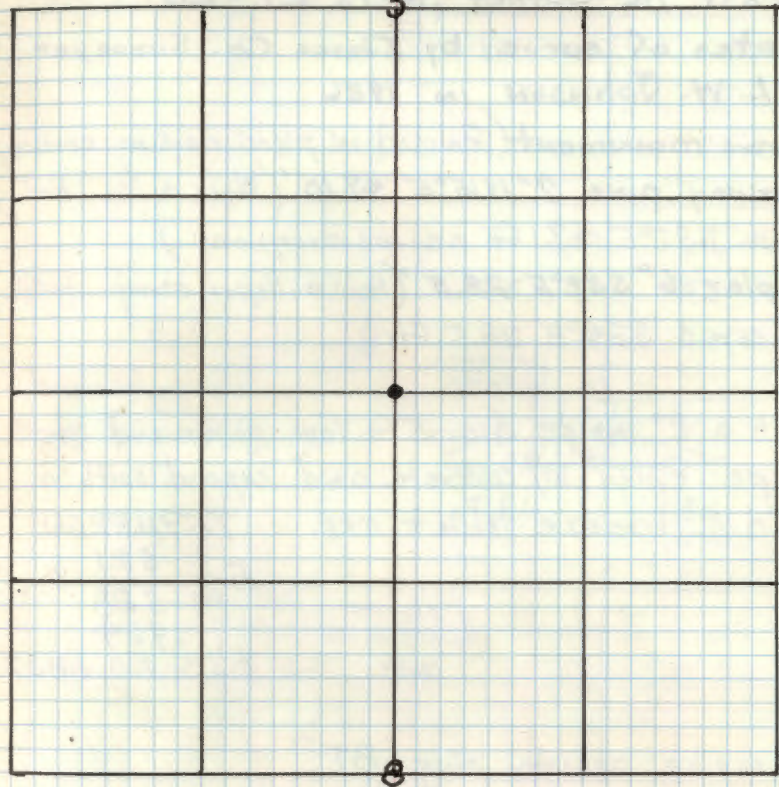
Iron Monument

Spruce 10" N47°W 35.4 Feet

Aspen 12" S17°W 48.0 Feet.

T59N

R26W



28 R-12

East $\frac{1}{16}$ Corner Sects 21-28
Notes of survey by Itasca Co. Surveyor
L. W. Johnson in 1926

Iron monument (Found in place marking corner)
Norway pine 7" N15°E 47.10' (Now a 1 1/2" Red
pine N32°E 47.1 ft scribe overgrown.)
Poplar 6" S82°E 28.5' (Now a Aspen stump mostly
decayed S34°E 28.5 ft.)

Set a 2" inside dia. 5 ft long galvanized steel
pipe filled w/ concrete and capped with a
3" dia. bronze tablet MKD. T59NR26W

S27 on top
changed to S28
w/ta
E 1/16 S21
S28
1964
RLS NO. 6807

Rescribe county pine "BT"

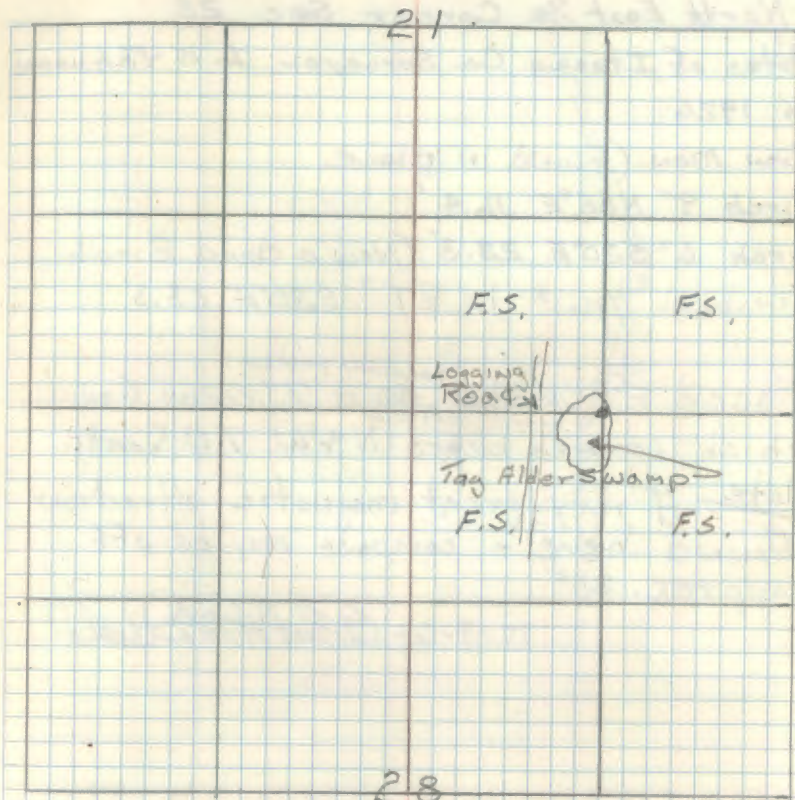
White pine 2 1/2" X80°E 24.4 ft MKD E 1/16 S21 BT
Steel sign post 72" long set due North w/
F.S. standard sign 54-4 attached 6.6 Feet North

12-9-64 Robert H. M. Donald
Bill Heide

Affidavit
RHM

R-12

21-28



Handwritten scribbles and notes at the bottom of the grid area.

29 S-12

North East $\frac{1}{16}$ Corner Sec. 28

Notes of Itasca Co. Surveyor L. W. Johnson
in 1926

Iron Mon. (Found in place)

Birch 9" N05°E 16.4'

Birch 6" S30°E 23.3' (Now a dead Birch

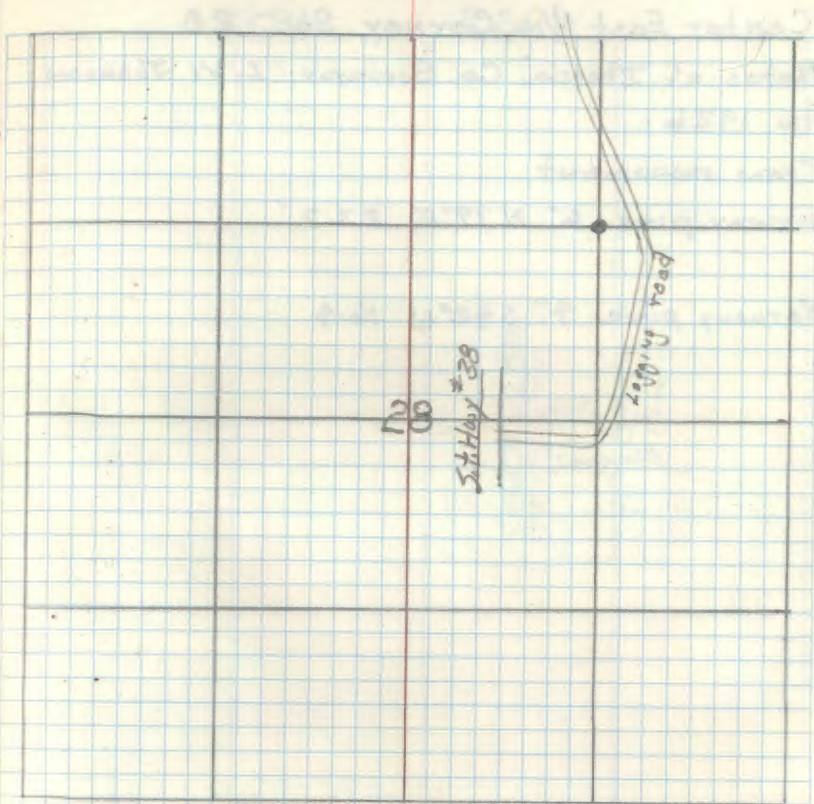
Scribed $\frac{1}{16}$ #1 BT" S30°E 23.3'

Location poster

Placed F.S. metal ^{Location poster} on a 7" cedar from
which corner bears N4°W 7.0 feet

Note A very great magnetic attraction
found here - compass may be off
approx. 30°

12-9-64 *Robert H. M. Dwyer*



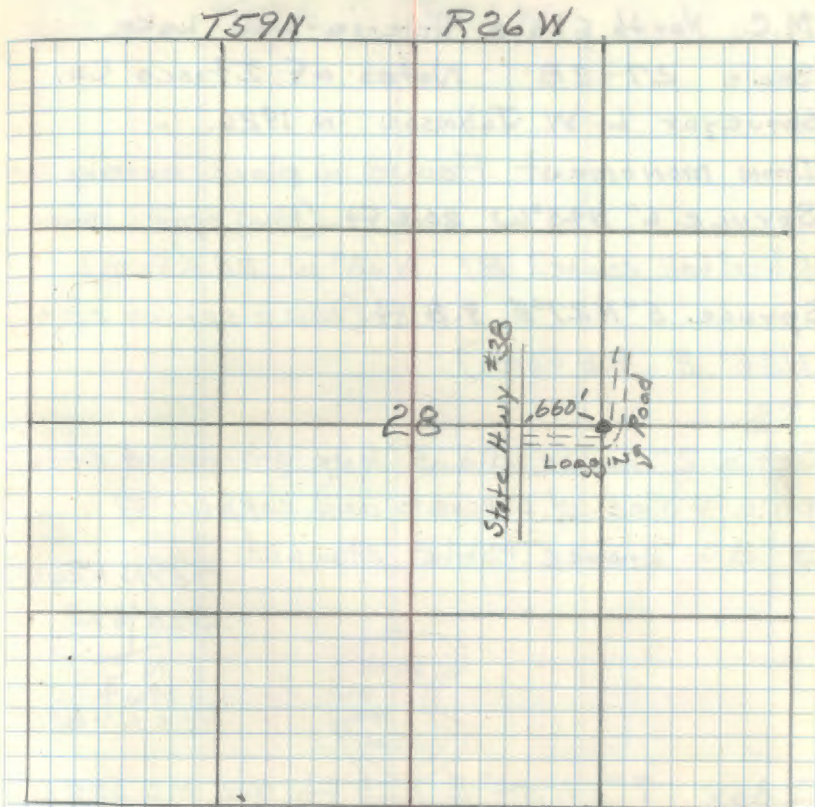
Center East $\frac{1}{16}$ Corner Sec. 28

Notes of Itasca Co. Surveyor L. W. Johnson
in 1926.

Iron monument

Norway pine $6^{\circ} N 79^{\circ} E$ 23.7'

Norway pine $4^{\circ} S 42^{\circ} W$ 16.4'



31 U, V-13

M.C. North Shore Hole-in-Wall Lake
Sec's 27-28 Notes of Itasca Co.
Surveyor L. W. Johnson IN 1926.

Iron monument Found in place marking cor.
Spruce 6" N43°W 20.6 Ft. (Now spruce stump
& windfall scribed "BT" N38°W 20.6 feet.)

Spruce 5" N27°E 9.8 Ft. (Now a spruce stump
N35° E 9.8 feet.)

Set a 2" inside dia. 5' long galvanized steel
pipe Filled w/ concrete and capped w/ a
3" dia. bronze tablet stamped:

T59N R26W

S28 S27

M.C.
1964

RLS NO 6807

Cedar 7" N54°E 21.5 Ft. MKD M.C. S27 BT

Tamarack 9" N82°W 32.5 Ft. MKD M.C. S28 BT

Steel sign post, 72" long, set 24" in ground
w/ F.S. standard sign 54-4 attached, due
North 5.3 feet.

12-11-64 Robert H. McDonald
Bill Heide

11-28-67 James E. Hutton
Checked OK

Affidavit RHM

U, V-13

T59N

R26W

28

27



32

S.M.C. on South $\frac{1}{16}$ line Section 6
East shore of Turtle Lake
Iron pipe

33 R-17, 18

Meander Corner 23-26 west
bank of Big Ole Lake

Co surveyor L W Johnson in 1924

Iron monument (Found a 1" dia. iron pipe marking
corner)
+ Rock 4' x 5' S51°W 30.5 Feet.

(Now S57°W 30.5 Feet)

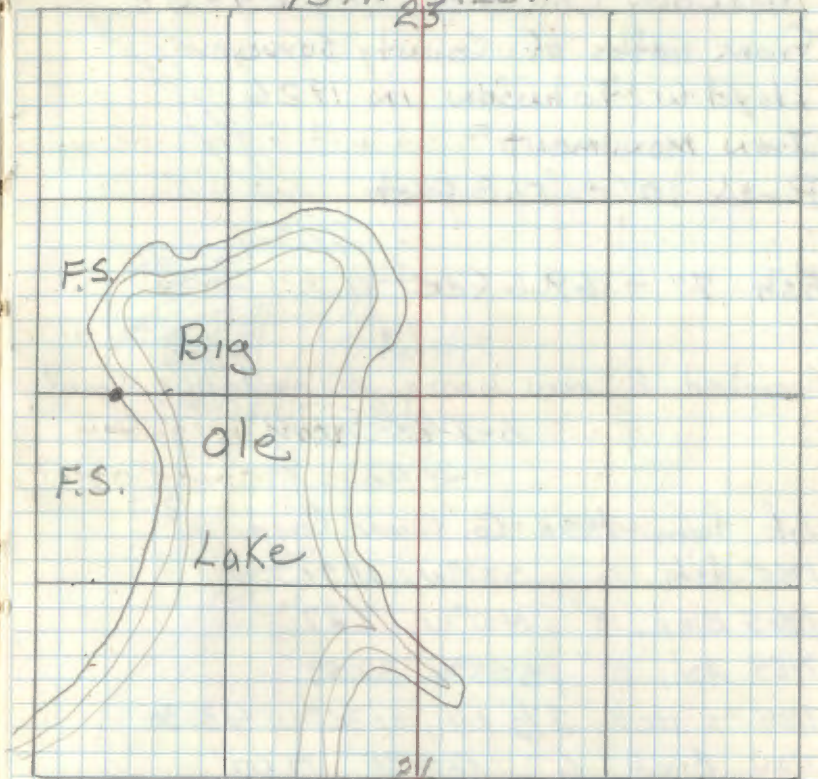
Poplar 5" N15°W 19.45 Feet.

(Now a decayed Aspen stump N6°W 19.45 ft)

I placed a F.S. metal location paster
on a 5" Birch from which corner bears
S 23½°E 18.0 feet.

May 25, 1965 *A. McDonald*

T59N R26W



34 V- 8,9

Meander Corner Sec's 29-32

From notes of County Surveyor

Lloyd W. Johnson in 1926

Iron Monument

Birch 10" - 51.8 Feet

Ash 7" - 69.6 Feet

Searched 2 man hours No evidence found
6-7-65 *AMM*

Info. from Hasca Co. Corner Card

1965 Ash, 6", S77°W, 11.91'

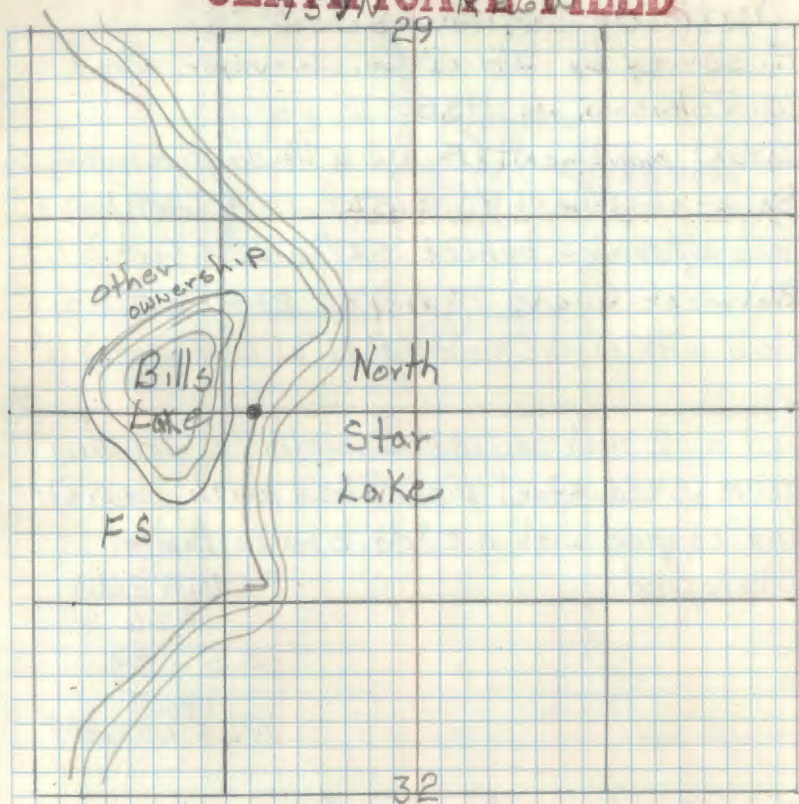
1965 Birch, 8", N10°W, 7.27'

7/84 Ash, 10", S54°W, 32.59'

7/84 "x" rock, 2 1/2' x 4', N36°W, 43.30'

7/84 Birch, 6", N14°E, 19.00'

CERTIFICATE FILED



35 B-9

North $\frac{1}{16}$ Corner Sec's 4-5

H. survey by Itasca Co. surveyor Lloyd W. Johnson in 1938.

Iron monument (Found a $\frac{1}{4}$ " dia. pipe marking Cor.)

✓ Balm-of-Gilead 9" S18°W 12.4 feet (Now a stub w/scribe burned S27°W 12.4 feet.) 11"

✓ Balm-of-Gilead 7" N31°W 21.8 feet (Now a stub with scribe visible N21°W 21.8 feet.) 11"

Set a 2 inch inside diameter, 5 foot long galvanized steel pipe filled with concrete and capped with a 3" dia. bronze tablet stamped:

T59NR26W
N $\frac{1}{16}$

✓ S5 | S4

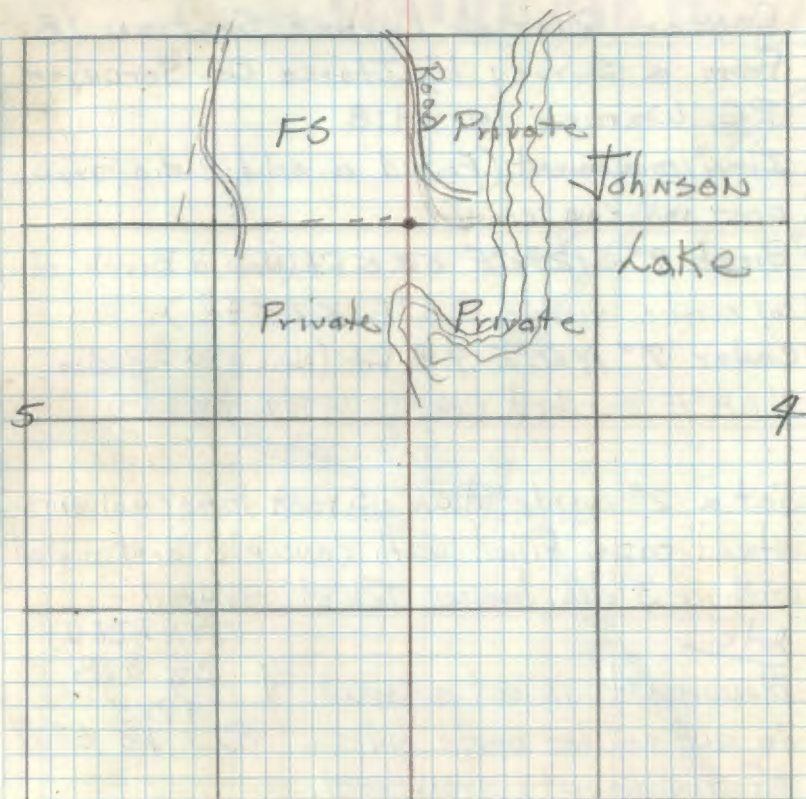
1965
RLS NO. 6807✓ Ash 9" N5 $\frac{1}{2}$ °W 6.7' MKD N $\frac{1}{16}$ S5 BT✓ Cedar 11" N88°E 32.7' MKD N $\frac{1}{16}$ S4 BT

✓ Steel sign post 72" long with F.S. standard signs 54-2 & 54-4 attached set due West 6.2 feet

May 27, 1965 R.A. McDonald

Affidavit
RHM

B-9



A blazed line runs west to a road

36 1-3

Center Quarter Corner Section 18
From a Survey by Itasca Co. Surveyor
P.C. Warner in 1918

Iron monument (Found a solid 2" dia. iron
post marking corner)

✓ Birch 9" S12 $\frac{3}{4}$ °E 33.5 Ft. (Now a Birch stump
w/ scribe visible S6°E 33.5 Ft.)

✓ Cedar 7" N60°E 9.8 Ft. (Now a 9" cedar
N68°E scribed Cen S18 BT 9.8 Ft.)

Set a 2" inside dia., 5 foot long galvanized
steel pipe filled with concrete and capped
with a 3" dia. bronze Tablet stamped:-

Note

Monument is set adjacent
to and on the south side
of the county iron post.

759N R26W

C $\frac{1}{4}$ S18

1965

PLS No 6807

✓ Cedar 12° N24 $\frac{1}{2}$ °E 14.0 Ft M $\frac{1}{2}$ D C $\frac{1}{4}$ S18 BT

✓ Aspen 10" S49°E 46.7 Ft M $\frac{1}{2}$ D C $\frac{1}{4}$ S18 BT

✓ Steel sign post 72" long with F.S. standard
signs 54-2 & 54-4 attached set East 4.9 Ft

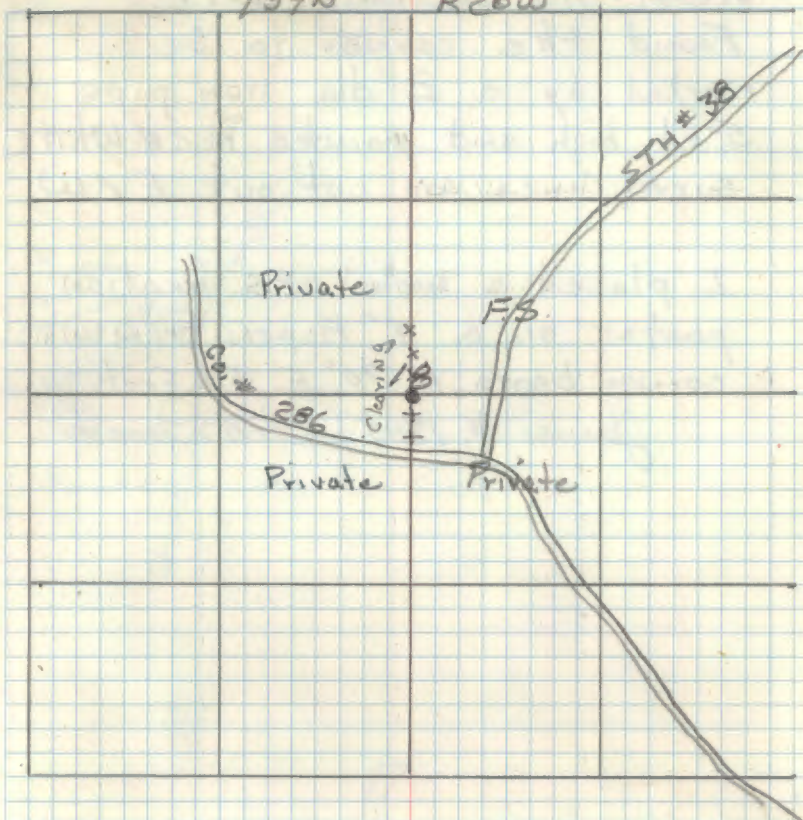
June 8, 1965 *J.A. Mch*

Affidavit RHM

1-3
CERTIFICATE FILED

T59N

R26W



J.A. Mch
11-22-67

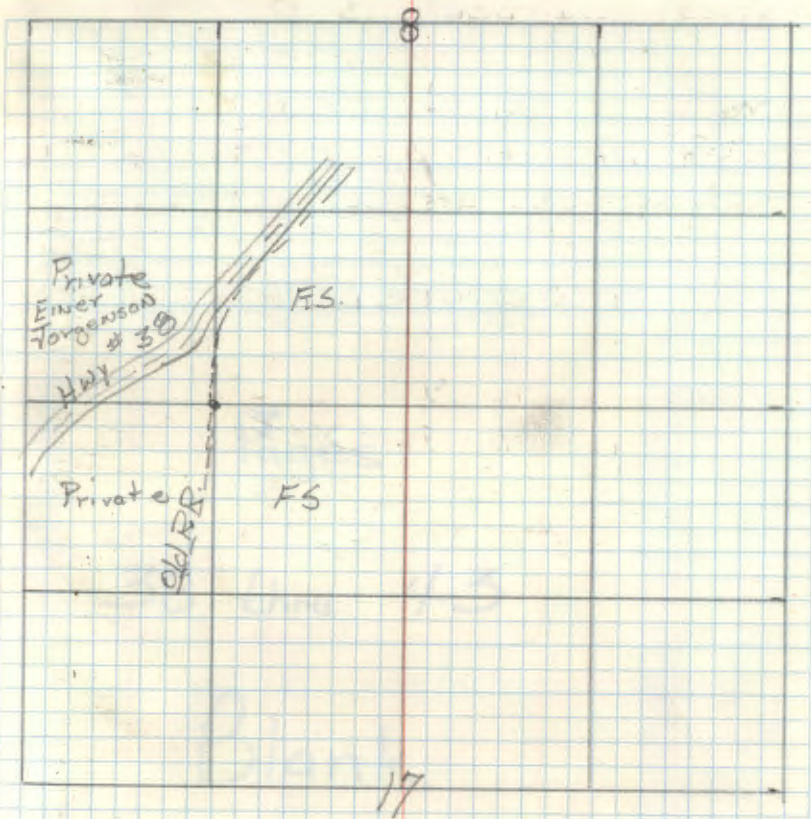
37 J-6

West $\frac{1}{16}$ Sections 8-17

Found the corner to be
marked by a 2" dia iron pipe
5 ft high and painted Red & White
survey lines are cut out E & W

I placed a metal FS. location
poster on a 7" Aspen from which
corner bears N 70° E 5.6 feet.

June 18, 1965 R. McDonald



Pages

38 thru 43

Blank

44 V-21

Section Cor. 25-26-35-36

Notes of Itasca Co. Surveyor Lloyd W. Johnson
1929-plat recorded in Itasca Co. CourthouseIron monument (Found a 1" iron pipe marking
Govt. Pine 26" S38°E 27.45' (Now a pine stump
scribed "CO w/ BT" S35°E 27.45 ft.)N. Pine 6" S53°E 70.85' (Now a 11" Red pine
S46°E 70.85 w/ scribe overgrown, IN good condition
N. Pine 6" S28°W 41.0' (Now a 13" red pine stp.
scribe "T" visible S34°W 41.0 ft.)N Pine 6" N42°W 31.60' (Now 11" pine stp. scribed
"BT" N36°W 31.6 feet.)N. Pine 7" N54°E 63.3' (Now a 12" Red pine stp
scribed BT N64°E 63.3 ft.

Govt Pine 6" N25°E 20.70' Not Found

Set a 2" inside dia. 5' long galvanized steel
pipe filled with concrete and capped with
a 3" dia. bronze tablet stamped:-

T59N R26W	
S26	S25
S35	S36
1965	
RLS NO 6807	

R9-7150-4 by Olesen 5/5/81 - set 8' long steel sign post
south 5.3' w/signs 54-2159-9

Affidavit RHM

V-21

T59N

R26W

26

25

3-17-99 Romain G. Brama B. Ausk
Fd Forest Service Monument in good condition.
Mature Red Pine south east of corner on
state land. Clearcut west and north of corner.
Mkd three new BTs.

W Pine 7" N30E 23.60 ft to SPK MKD S25 BT

W Pine 14" S72W 27.70 ft to SPK MKD S35 BT

W Pine 21" S46E 65.58 ft to SPK MKD S36 BT

ADD 8 FT HEAVY STEEL SIGN POST EAST 2.95 FT
LINE TO STANDARD SOUTH OF CORNER

35

36

New BTs

White Pine 8" N23°W 36.85' MKD S26 BT
NOW 19" E ARG 5 DEST W/TAGWhite Pine 7" S70W 17.3' MKD S35 BT
NOW 8" SNAG

Steel Sign post 72" long w/ F.S. standard

sign 54-4 attached set due North 39

May 18, 1965 *James E. Johnson*12-7-67 James E. Johnson *Bill Johnson*
Checked OK

45 R-~~19,20~~
18-19

Meander Cov. Sec 23-26 East bank Big Ole Lk.

Notes of Itasca Co. Surveyor Lloyd W. Johnson

1924 - plat recorded in Itasca Co. Courthouse

Iron mon. (Found a 1" dia. iron pipe marking Con.)
Balm of Gil. 14° S 40° E 51.3' (Falls in lawn of
a private cabin.)

White Ash 8" S 88° E 59.80' (Now a 17" Ash
S 82° E 59.8 Feet with scribe overgrown.)

Set a 2 inch inside diameter 5 Foot long
galvanized steel pipe filled with concrete
and capped with a 3 inch diameter bronze
Tablet stamped:-

T59N R26W

M.C. | S23
 | S26

1965
RLS NO 6807

I rescribe the County Ash with letter BT
New

Elm 11" N 53½° E 48.9 Ft. MKD M.C. S23 BT
Steel sign post 72" long with F.S. standard
signs 54-2 & 54-4 attached set S 86° E 5.4 Ft.

May 24, 1965 RHM Donald

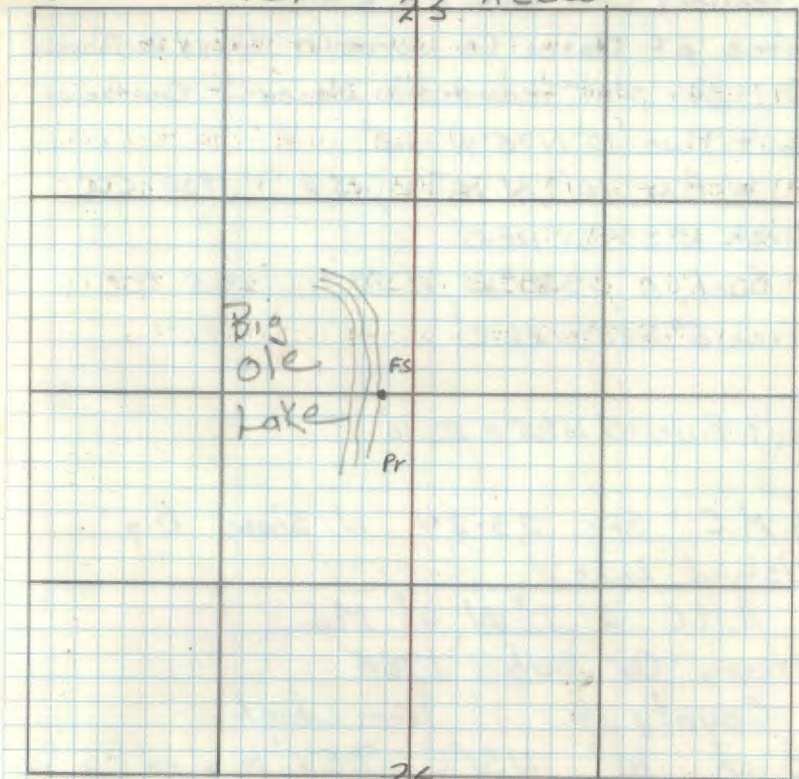
I cut new BT

X Rock 3'x2' S 73° E 17.30'
5/5/65
RHM Donald

Affidavit RHM

R-19, 20

T59N 23 R26W



12-7-67 James Ekstrom
Chuck POK

RR-7150-4 by Olesen 5/5/61

47

R-21-22

Meander Cor. Sec. 24-25 East 6K, Island Lake
 Notes of Itasca Co surveyor L.W. Johnson in
 1924 - plat recorded in Itasca courthouse
 W. Pine str. $18^{\circ} N 90^{\circ} E$ 22.10'

Gov't W. Pine $10^{\circ} N 75^{\circ} E$ 5.94'

Gov't. W. Pine $10^{\circ} S 37^{\circ} E$ 11.00'

Itasca Co. Sub. 1966

County Mo. from which:

Birch, 6", $N 76^{\circ} E$, 7.62'

Elm, 3", North, 3.65'

Itasca Co. July 1984

"x" rock, $1\frac{1}{2}' \times 2\frac{1}{2}'$, East, 23.81'

"x" rock, 1'x1', $S 27^{\circ} E$, 20.92'

Maple, 5", $N 30^{\circ} E$, 8.62'

Balsam, 4", $S 35^{\circ} W$, 10.25'

Original Gov't Survey Wood post

W. Pine, 10", $N 74^{\circ} E$, 5.94'

W. Pine, 10", $S 35^{\circ} E$, 17.16'

T59N 24 R26W

Private	Private		
Private	A		

25

48 R-17

Sec. Cor. 22-23-26-27

Notes of Itasca Co. Surveyor L.W. Johnson
 1924 - survey plat recorded Itasca Co. Courthouse
 Iron mon. (Now a 1" dia. iron pipe marking corner)
 W. Pine stp. $36''$ N 73° E $47.00'$ (Now a large pine
 stump N 81° E $47.00'$ feet
 W. Pine stub $10''$ S 20° W $30.3'$ (Now a pine stump
 scribed "BT" S 25° W $30.3'$ feet
 Gov't Cedar $6''$ N 04° W $18.48'$ Bulldozing in-
 this area has obliterated these two BTs.
 Gov't Pine $22''$ S 60° E $31.02'$

Set a 2 inch inside diameter, 5 foot long
 galvanized steel pipe filled with concrete
 and capped with a 3 inch dia. bronze tablet
 stamped:-

T59N R26W
 S22 | S23
 S27 | S26
 1965
 RLS No 6807

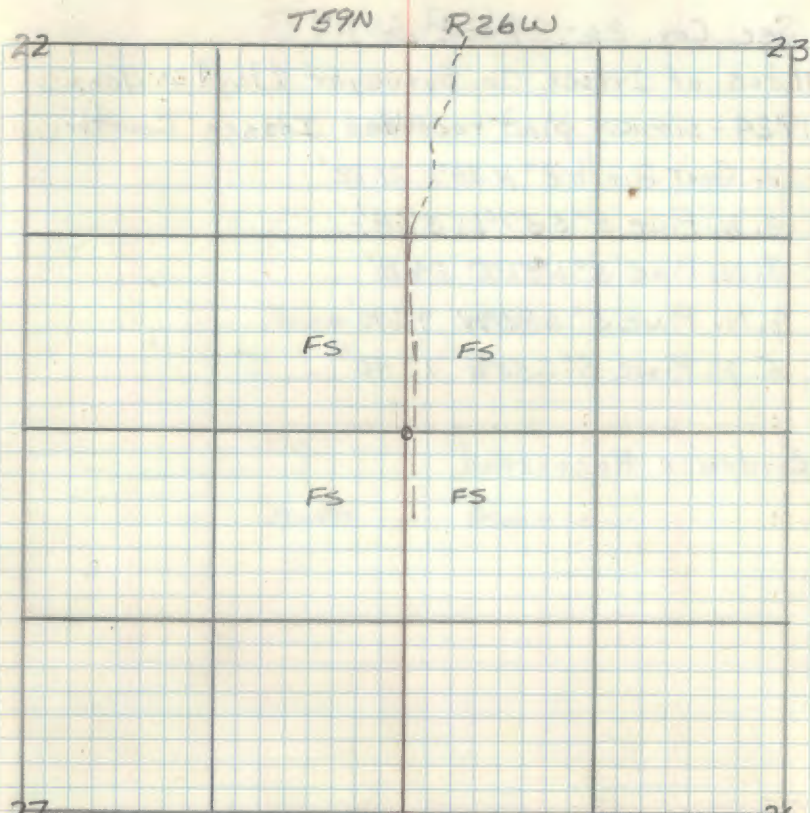
Aspen $10''$ N 12° W $17.05'$ MKD S22 BTBirch $6''$ N 67° E $72.95'$ MKD S23 BTAspen $10''$ S $12\frac{1}{2}^\circ$ E $34.7'$ MKD S26 BTBirch $7''$ S 35° W $21.95'$ MKD S27 BT

Steel sign post $72''$ long with F.S. standard sign
 54-4 attached set S 87° E $4.0'$ ft.

May 25, 1965 *W.M. Donald*

Affidavit RHM

R17



27 A logging road bearing N-S passes approx.
 25 feet east of corner. 26

12-7-67 *Jamie E. Johnson*
OR

Sec. Cor. 26-27-34-35

Notes of Itasca Co. Surveyor Lloyd W. Johnson
1924 - survey plat recorded Itasca Courthouse

1. Gov't Birch 8" N 38° E 21.12'

2. N. Pine 5" S 37° W 37.8'

3. N. Pine 5" N 56° E 24.10'

4. N. Pine 5" S 80° W 43.90'

5. N. Pine 5" S 50° E 17.40'

Evidence Recovered

T59N R26W

Private

Private

Private

Private

West $\frac{1}{16}$ Sections 27-34

Survey by Itasca Co. Surveyor Lloyd W. Johnson
1929 From Co. records

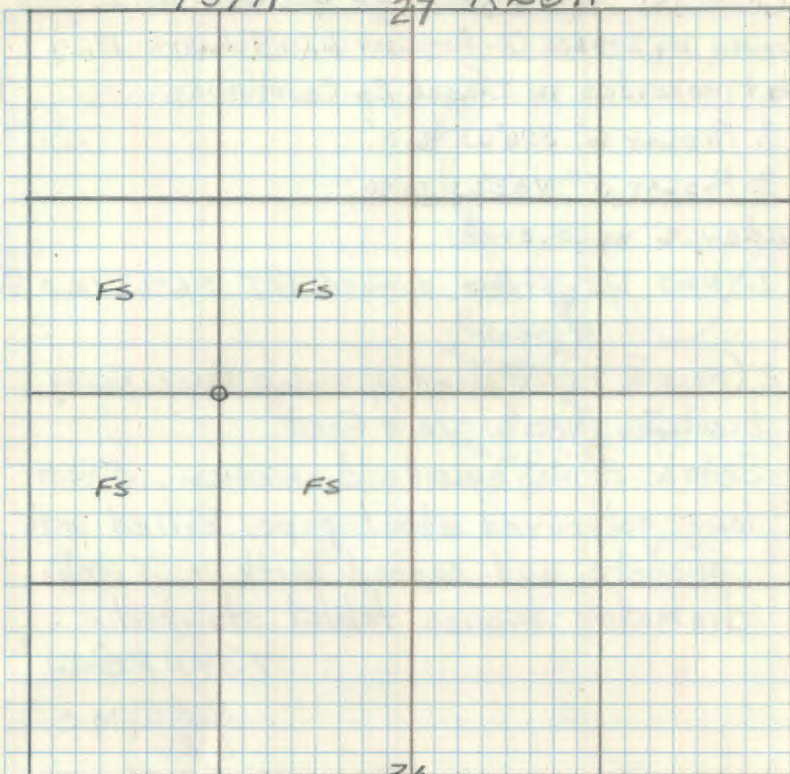
1. Spruce 5" N18°E 27.30'

2. Poplar 7" N42°W 35.15'

Evidence found

T59N

27 R26W



51 R-19, 20

Meander Corner Sec. 23-26 West bk. Island
Survey by Itasca Co. Surveyor L.W. Johnson 1924
plat recorded in Itasca Co. Courthouse.

1. Poplar 6" S06°W 16.0'
2. Poplar 5" N52°W 10.40'

Evidence recovered:

1. (Now 12" stump scribed BT S6°W 16.0 ft
Aspen

2. (Now a Aspen stomp w/ window blaze Facing
corner N50°W 10.4 feet.

Set a 2 inch inside diameter, 5 foot
long galvanized steel pipe filled with
concrete and capped with a 3 inch
diameter bronze tablet stamped:-

T59N R26W

S 23 M.C.

S 26

1965

RLS NO 6807

Balsam 8" N57°W 14.6' MKD M.C. S23 BT

Aspen 8" N76½°W 27.9' MKD M.C. S23 BT

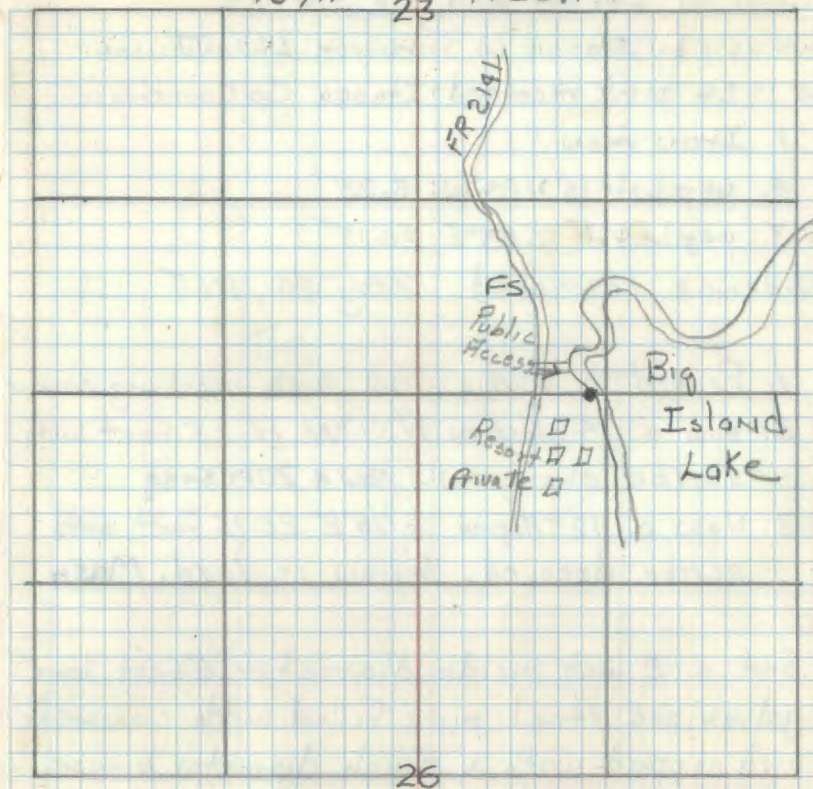
Steel sign post 72" long with F.S. standard
signs 54-2 & 54-4 attached set West 5.8'

June 17, 1965 G.A. McDonald

Affidavit RHM

V-19, 20

T59N 23 R26W



19-7-67 James Estrom
Charles JOK

monument pushed out by Fee

To bring this Corner to Standard I reset
monument to original position from BT and cut New BT

X Rock 1½ x 2" S80W 13.28'

Balsam 6" N84W 8.75'

5/5/61
Ronald Olson

RR-7130-4 by desen 5/1/61

52 R-19

Quarter Corner Sec. 23-26

Survey by Itasca Co Surveyor L.W. Johnson
in 1924 plat recorded Itasca Co Courthouse.

1. Iron mon.
2. poplar 6" N24°W 13.25'
3. poplar 6" S85°E 20.15'

Evidence recovered May 24, 1965

1. Found a 1" dia iron pipe marking corner
2. Now a 14" Aspen N51°W 13.25 feet with
scribe overgrown **NOW A 20FT SNAG**
3. Now a 12" Aspen S78°E 20.15 feet with
scribe decayed. Aspen is dead. **MUSH**

Set a 2 inch inside diameter 5 foot long
galvanized steel pipe filled with concrete
and capped with a 3 inch diameter bronze
tablet stamped:-

T59N R26W
1 S23
4 S26
1965
R.L.S. NO 6807

New BTs

NOW A WINDFALL
ELM 6" S18°E 39.0 ft. MKD 1/4 S26 BT
NOW A WINDFALL
ELM 7" N38 1/2°E 42.8 ft. MKD 1/4 S23 BT

Steel sign post 72" long with F.S. standard
signs 54-2 & 54-4 attached set due West 4.9A.

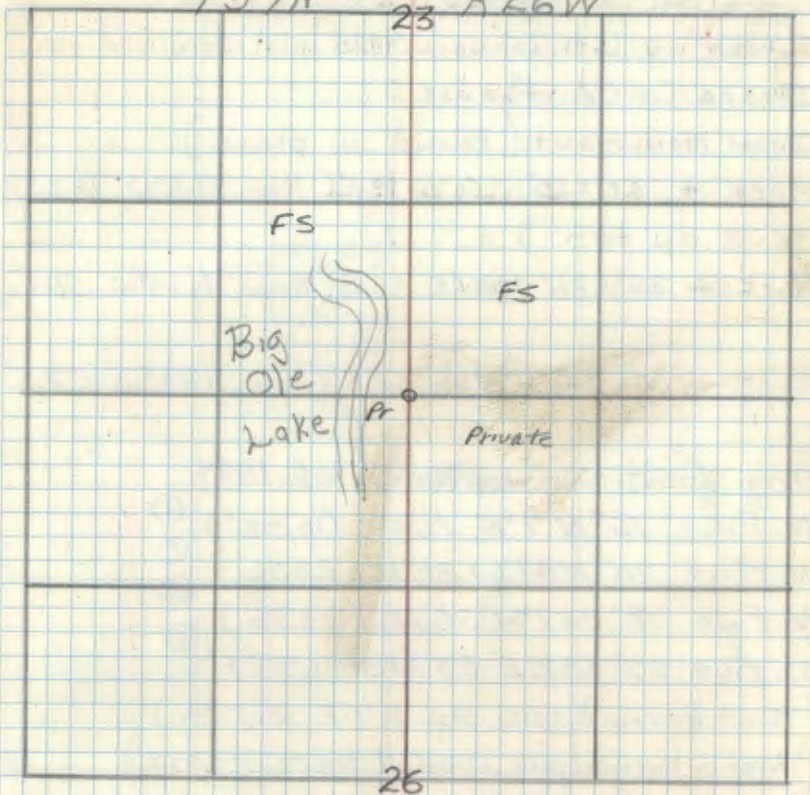
May 24, 1965 *ATM Small*

Affidavit RHM

R-19

T59N

23 R26W



12-7-67 James Estrom
Checked OK

RP-7150-4 by Oleson 5/5/61

53 R-13

Section Cor. 21-22-27-28

Survey by L.W. Johnson 1925 plat recorded in Itasca Co. Courthouse:

Iron monument. (Found in place)

Rock + 60"x60" S56°W 19.0' (Now S68°W 18.6 ft. to X on top.)

Rock + 36"x36" N10°E 58.0' (Now N14°W 58.0')

Rock + 20"x20" N91°W 52.5' (Now N39°W 52.5')

Orig. Govt. Survey Notes of 1874

N. Pine 16" N 7°E 16 Lks (10.56') ①

N. Pine 20" N 47°W 36 Lks (23.76') ②

N. Pine 18" S 51°W 36 Lks (23.76') ③

W. Pine 22" S 82°E 33 Lks (21.78') ④

① Now burned pine stp. N 7°E 10.7 ft.)

② Now a burned pine windfall N 47°W 23.7 ft.)

③ Now a burned pine stump S 45°W 23.76 ft.)

④ Now a pine stp w/ scribe "B" visible S 82°E 21.8 ft.)

Steel sign post set due East 8.3 ft. w/ standard

F.S. signs 54-2 & 54-4 attached

Spruce 6" S 22°E 23.9 ft. MKD S 27 BT

Balsam 6" N 52°W 15.0 ft. MKD S 21 BT

Bill Heide 12/8/64

Affidavit RHM

R-13

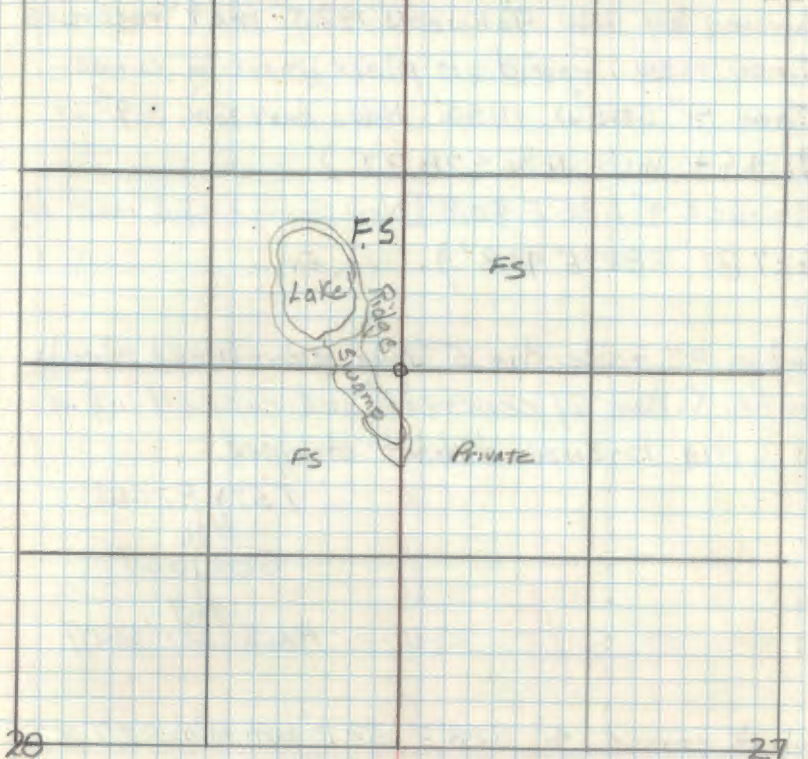
CERTIFICATE FILED

T59N

R26W

21

22



Set a 2" inside dia. 5 Foot long galvanized steel pipe filled w/ concrete and capped w/ a 3" dia bronze tablet stamped

T59N R26W

S 21 S 22

S 28 S 27

1964

RLS NO 6807

12/8/64 Robert H. McDonald

11/28/67 James Ekstrom Checked OK

54 S-13

North 1/16 Sections 27-28

Survey by L.W. Johnson 1925 plat recorded

Iron mon. Found in place marking corner.

Tam 4" S05°W 11.40' (Now a dead Tam. S 9° W

11.4 Ft. MKD N 1/16 S 28 BT.)

Spruce 4" S85°E 40.8' (Now Spruce stub MKD " N 1/16

S 27 BT" S 82°E 40.8')

Set a 2" inside dia 5' long galvanized steel pipe filled w/ concrete and capped w/ a 3" dia. bronze tablet stamped:-

T59N R26W

N 1/16

S28 | S27

1969

PLS NO 6807

Black spruce 4" S28°E 32.2' MKD N 1/16 S 27 BT

Black spruce 4" S4°W 33.6' MKD N 1/16 S 28 BT

Steel sign post 72" long set due East w/

FS. standard signs 54-2 & 54-4 attached 7.3 Ft.

12-8-64 G. H. McDonald

Bill Heide

11-28-67 James Ekstrom

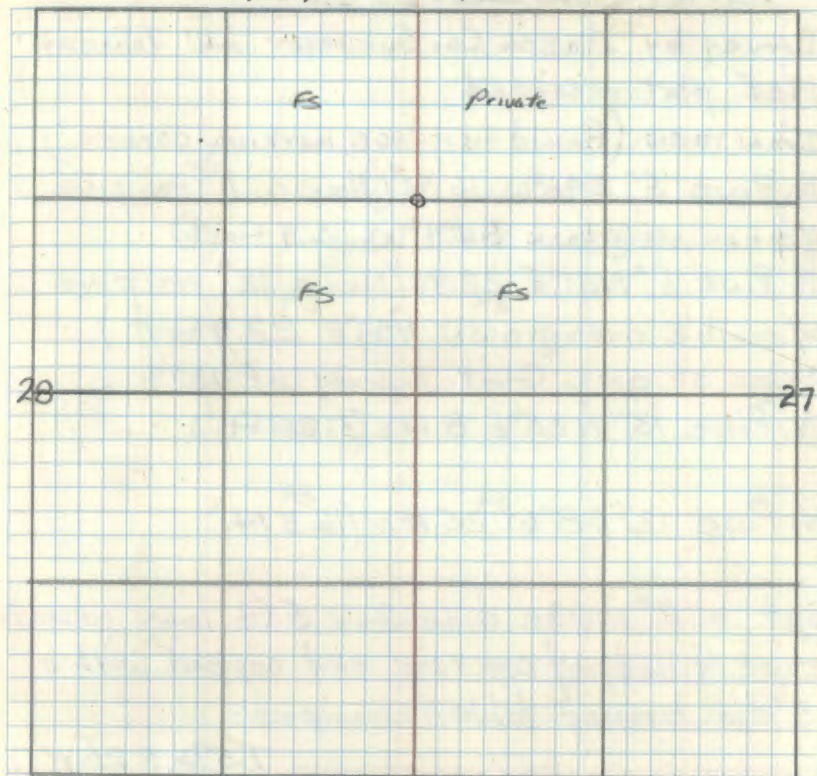
checked ok.

Affidavit RHM

S-13

T59N

R26W



55 T-13

Quarter Cor. Sec. 27-28

Survey by Itasca Co. Surveyor L.W. Johnson

1925 plat recorded

Iron mon. (found in place marking corner.)

N. Pine 5" S46°W 16.90' (Now a 11" red pine w/ scribe overgrown S54°W 16.9 Feet.)

N. Pine 5" N31°E 22.90' (Now a 12" red pine w/ scribe overgrown N41°E 22.9 Feet.)

Notes of orig. Govt. Survey of 1874

N. Pine 15" N35°E 8 Lks (5.28 Ft.)

N. Pine 12" S8°W 25 Lks (16.5 Ft.)

Set a 2" inside diameter 5 ft. long galvanized pipe filled w/ concrete and capped with a 3" dia. bronze tablet stamped:-

T59N R26W

S28 ^{1/4} S27

1964

RLS NO 6807

I rescribed the 2 co. red pine bearing trees w/ letters "BT"

Set steel sign post 72" long w/ sign 54-4 attached due South 5.0 Feet.

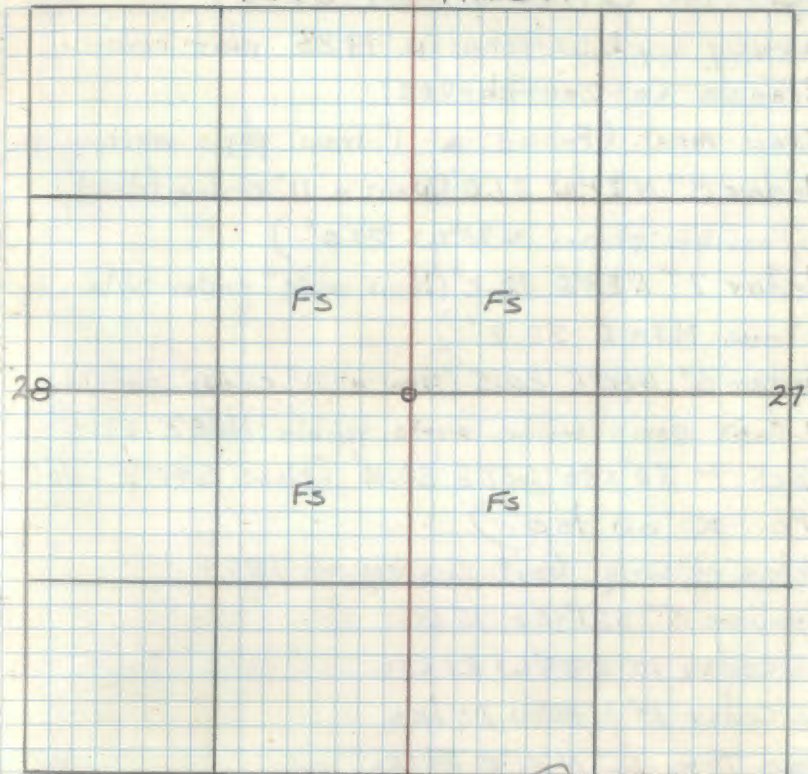
Bill Heide 12-10-64

Affidavit RHM

T-13
CERTIFICATE FILED

T59N

R26W



12-11-64 Robert H. M. Donald

11-28-67 James Johnson
Checked OK

56 V-13

Section Corner 27-28-33-34

Survey by L.W. Johnson 1925 plat recorded
Itasca Co. Courthouse;

Iron mon. (Found a 1" iron pipe marking cor.)

Cedar 8" N79°W 21.0' (Now a 11" cedar (dead)

w/ scribe plain N75°W 21.0')

Cedar 7" N28°E 32.2' (Now a 10" cedar w/ scribe
plain N29°E 32.2')

Cedar 6" N80°E 20.5' (Now a 11" cedar partly
hollow some scribe marks visible N88°E 21.5')

Rock + 30"x36" S50°E 20.10' (Now S42°E 20.8'
to X on top.)

Notes of Orig. Govt Survey of 1874

Spruce 5" S21°40'E 15 LKs

w. Cedar 10" S34°W 21 LKs

w. Cedar 10" N30°W 25 LKs

Dead Tam 12" N31°E 29 LKs

Set a 2" inside dia. 5' long galvanized steel
pipe filled w/ concrete & capped w/ a

3" dia bronze tablet stamped:

T59N R26W
S28|S27
S33|S34
1964
PLS No 6807

Affidavits RRM

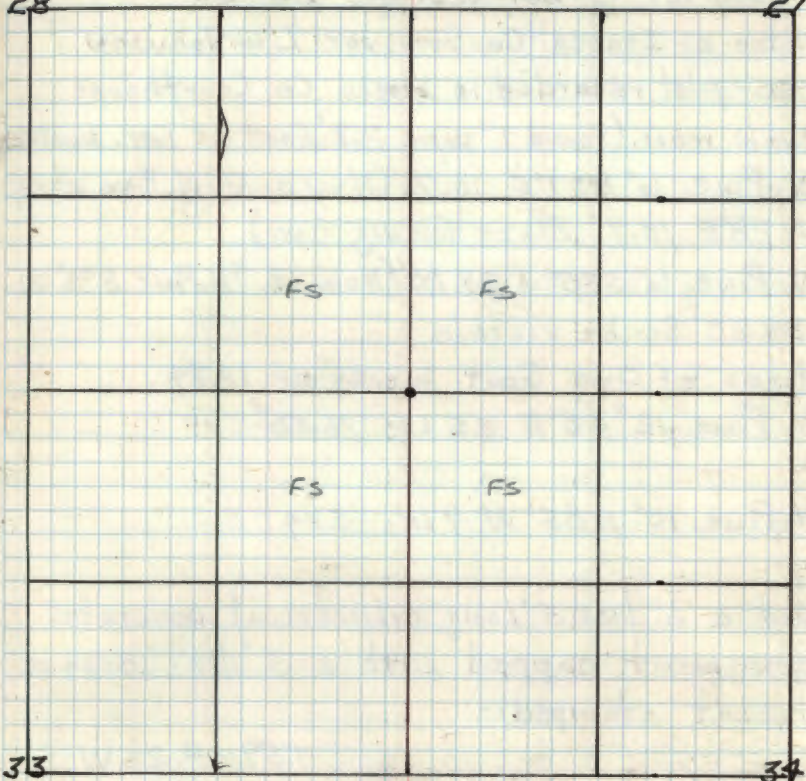
CERTIFICATE FILED

T59N

R26W

28

27



Cedar 7" N57½°W 33.3' MKD S28 BT

Cedar 7" S55°W 34.3' MKD S33 BT

Cedar 6" S50½°E 31.0 FT MKD S34 BT

Steel sign post 72" long w/ F.S. std. sign.

54-4 attached N7°W 5.3 Ft.

12-15-64 Robert W. McDonald

Bill Kaida

11-28-67
James Spitzer
Checked OK

57 V-11 Affidavit RHM

Quarter Corner Sections 28-33

Notes of Itasca Co. Surveyor L. W. Johnson

1925 - plat recorded in Itasca Co. Courthouse

Iron mon. (Found 1" pipe 2.8' East of Cor. location)

N. Pine 6" N 21° E 10.70' (Now a 13" N. Pine stump)

N 28° E 10.7' Blaze facing cor.

N. Pine 6" S 35° W 29.20' (Now 12" N. Pine S 46° W

29.20' Scribe visible)

Notes of Orig. Govt. Survey of 1874

N. Pine 12" S 5° E 25 Lks 16.50'

N. Pine 10" N 85° W 9 Lks 5.99

Set a 6" dia. 5' long cylindrical concrete monument capped with a 3" dia. bronze tablet stamped:-

T 59 N R 26 W

1/4 S 28

S 33

1961

RLS NO. 3628

Red Pine 14" S 47° W 6.7' MKD 1/4 S 33 BT

Red Pine 11" N 61° E 92.1' MKD 1/4 S 28 BT

12/27/61 R.H. McDonald

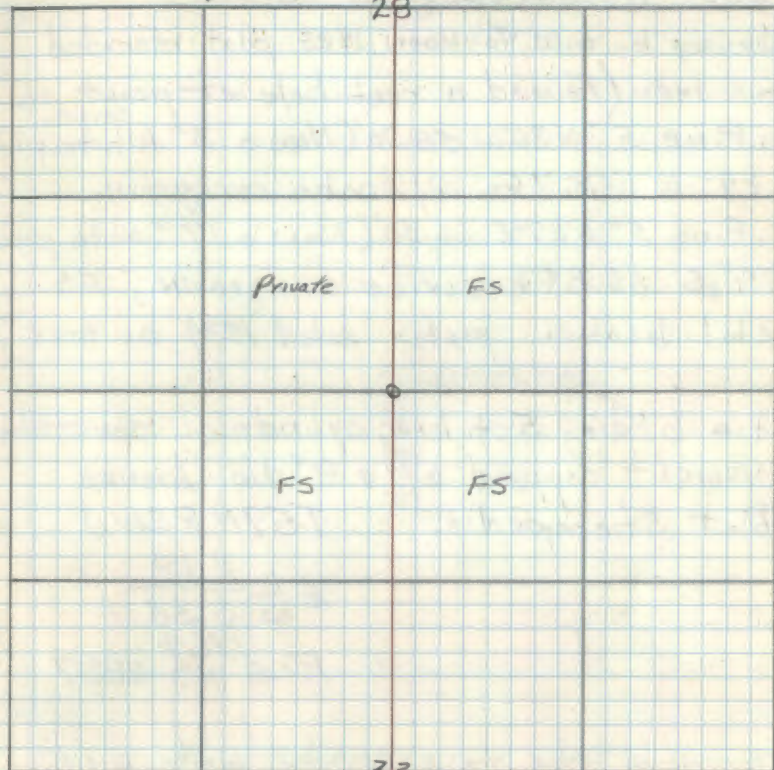
V-11

CERTIFICATE FILED

T 59 N

R 26 W

28



33

1935 Form 874-9 E. Meagher

CORNER CONSISTS OF 4" BIRCH POST AND 1" X 6" IRON PIPE. METAL LOCATION POSTER ON SW SIDE OF 7" BT

R PINE 7" N 18 E 17 LKS

R PINE 8" S 39 W 44 LKS

Hwy # 38 1 CHAIN EAST OF CORNER.

1-12-62
D.K.

R.A. Walker

58 V-12

East 1/16 Cor. Sec's 28-33

Survey by L.W. Johnson 1925 plat recorded
 Iron men. (Found a rust hole at point of
 W. Pine 5" N 36° W 58.70' (Now a 13" white pine ^{corner})
 N 29° W 58.7 Ft. w/ scribe overgrown.
 W. Pine 5" N 27° E 66.80' (Now a 17" white pine
 N 34° E 66.8 Ft scribe overgrown, F.S.
 Metal location poster dated 1934 on tree.)

Set a 6" dia, 5 ft. long cylindrical concrete
 monument capped w/ a 3" dia. bronze
 tablet stamped:-

T59N R26W

E 1/16 S 28

S 33

1964
RLS NO 6807

I rescribed the two county white pine
 w/ letters B.T.

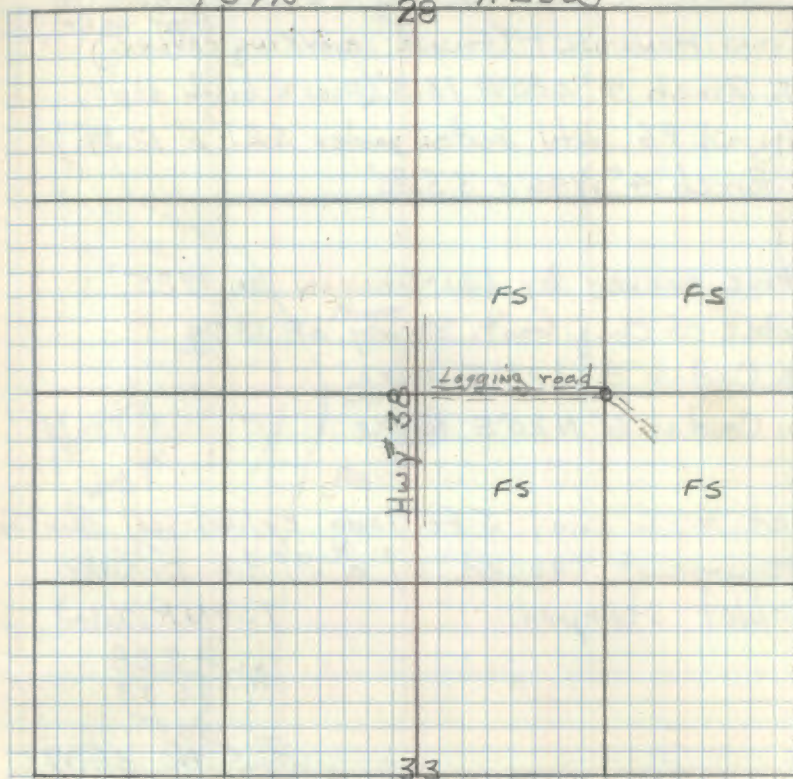
Set a cedar post 4" x 4" x 6' due West
 2.0 ft w/ sign 54-4 attached

12-14-64 Robert H. McDonald
 Bill Reid

11-28-67 James Ekstrom
 Checked OK

Affidavit RHM V-12

T59N 28 R26W



Corner is located in an old logging road
 1935 Form 874-9 Fd 4" ASPEN POST AND 1" x 6"
 IRON PIPE.

W PINE 7" N 35 W 89 1RS

W PINE 7" N 25 E 1 CHAIN

METAL LOCATION POSTER ON SW SIDE OF BT AT
 1 CHAIN.

59 V-10, 12

Meander Corner Sec. 28-33 East BK. North
Iron monument (Found marking ^{Star Lake} corner.)
W. Birch 9" S80°E 13.3' (Now a birch stump
& log w/ F.S. metal location poster S21°E 12.59')
W. Birch 4" N46°E 33.80'

Above survey by L.W. Johnson in 1925
Notes of Orig. Govt. Survey of 1879
W. Cedar 8" S25°E 3 lks.
W. Cedar 6" N20°E 15 lks.

Set a 6" dia, 5 ft long cylindrical concrete
monument capped w/ a 3" dia. bronze
tablet stamped:

T59NR26W

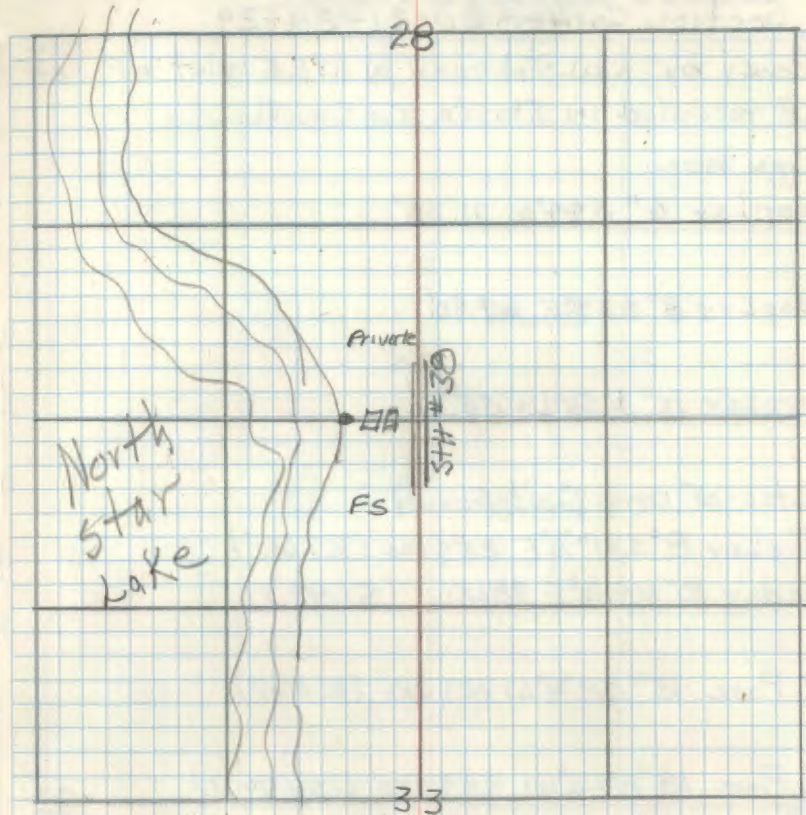
M.C. | S 28
 | S 33

1965
PLS NO 6807

Balsam 8 " S53°E 11.7 ft MKD BT
Birch 7 " S8°E 9.9 ft MKD BT
Cedar post 4" x 4" x 72" w/ F.S. standard
signs 54-2 & 54-4 attached set East
6.0 ft.

June 21, 1965 RHM McDonald
11-28-67 James Johnston
Checked OK

Affidavit RHM



A resort on section 28 has built
cabins on the line & they extend south
into section 33

1935 FORM 874-9 E. MEAGHER

CORNER CONSISTS OF 4" BALSAM POST AND 1" X 6" IRON
PIPE. LOCATION POSTER ON N.W. SIDE OF BIRCH BT at
19 lks.
BIRCH 6" N42°E 50 lks
BIRCH 6" S38°E 19 lks

Section Corner 20-21-28-29

Survey by L.W. Johnson in 1925 plat of F. Sec.
28 recorded in Itasca Co. Courthouse

Iron mon.

poplar 6" S44°W 11.35'

poplar 8" S39°E 64.80'

poplar 10" N50°W 36.70'

Notes of orig. Govt. Survey

Poplar 8" S31° $\frac{3}{4}$ °E 254.1Ks (167.64')

Cedar 10" N41 $\frac{1}{2}$ °E 284.1Ks (51.48 ft)

W. Pine 15" S10 $\frac{1}{4}$ °W 124.1Ks (81.84 ft)

W. Pine 18" N42°W 234.1Ks (154.44 ft)

12-21-34 CCC's

Found 5" cedar post in place w/a 3/4" iron beside. From which:

Aspen, 10", N55°W, 37.62'

Aspen, 9", S45°W, 12.54'

Aspen, 8", S43°E, 64.68'

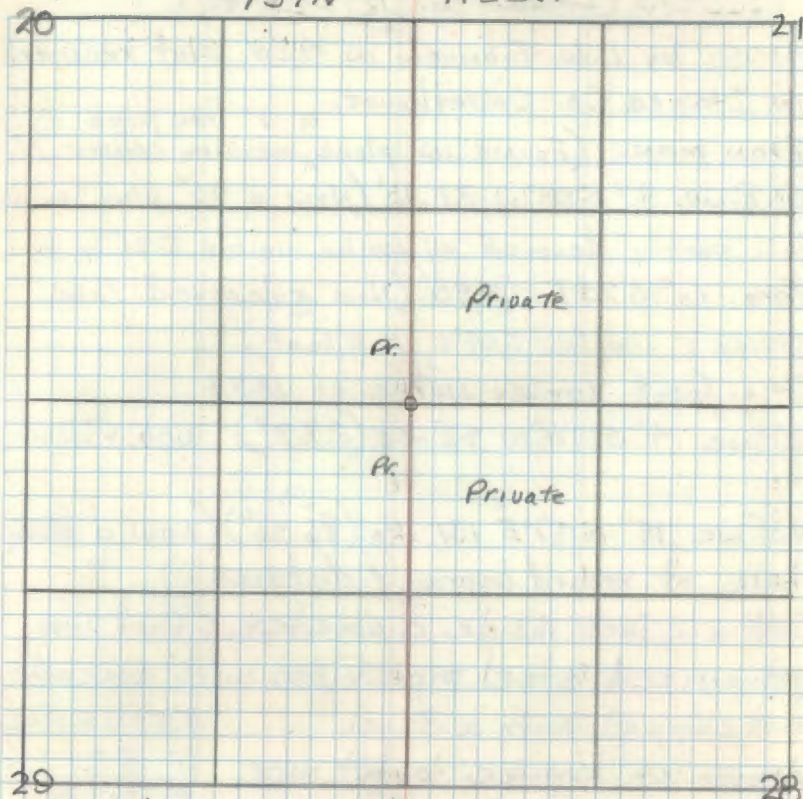
CERTIFICATE FILED

T59N

R26W

20

21



29

28

10/29/80 Itasca County found 1965 monument (flush) E. end rail fence, 16' N. of int. & E of rd. S. from which:
1965 Birch, 6", N24°E, 11.15' stb.
1965 Birch, 6", N38°W, 14.56' stb.
"X" rock, 1' x 1 $\frac{1}{2}$ ', S45°E, 46.85'
"X" rock, 2' x 2', S63°W, 37.56'
"X" rock, 1 $\frac{1}{2}$ ' x 2', N42°E, 12.27' (flush)

61 R-11

Quarter Corner Sec. 21-28

Survey by L.W. Johnson in 1925 plat recorded
in Itasca Co. Courthouse.

Iron mon. (Found in place, marking corner.)
a 1" iron pipe

W. Pine 9" S38°W 32.10' (Now a 10" pine wind-
fall partly decayed w/ scribe visible S45°W 32.1')

Tam. 6" S70°E 10.50' (Now a decayed Tam.

stump & windfall S64°E 10.5 feet)

Orig. Gov't. survey notes of 1874

W. Pine 4" S19½°W 42 Lks. (27.7') Not Found

N. Pine 15" N47°E 131 Lks. (86.46') (Now a stump
hole at record bearing & distance.)

Set a 2 inch inside diameter, 5 foot long
galvanized steel pipe filled with concrete
and capped with a 3 inch

diameter bronze tablet MKD:-

T59N R26W

1/4 S21
4 S28

1964

RLS NO 6807

Cedar 8" N61°E 22.4' MKD 1/4 S21 BT ✓

Black spruce 7" S40°E 11.0' MKD 1/4 S28 BT ✓

Steel sign post 72" long w/ FS standard

sign 54-4 attached N3°W 4.7' ✓

12-9-64

John M. Darcold

Blaine

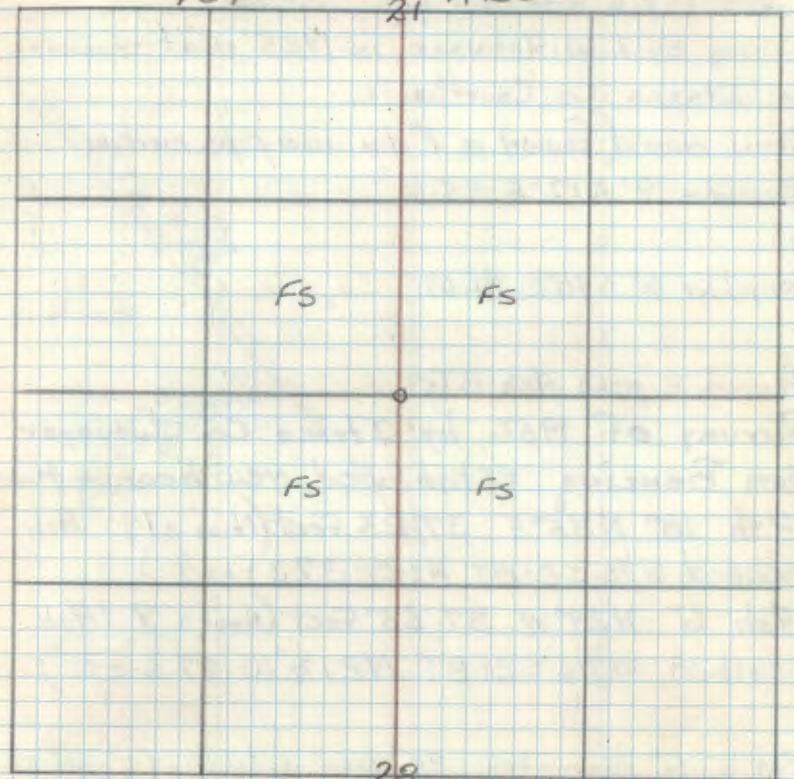
Affidavit RHM

CERTIFICATE FILED

T59N

21

R26W



Note when setting corne I found the
point of a old wood post believed to be
original CORNER. RHM

Blaine
11/17/64

62 R-10

West 1/16 Sec. 21-28

Survey by L.W. Johnson in 1925 plat recorded in Itasca Co. Courthouse.

Iron man. (Found a 1" dia. iron pipe marking corner) poplar 9" N17°E 25.10'

poplar 6" S40°E 31.07'

Found 2 new Ash B.Ts

Survey of 1956 by Itasca Co. Surveyor Sam Benzine established new bearing trees

Ash 10" N35°E 37.23 feet (Now a 14" Ash scribed w/16 S21BT N42°E 37.3 feet)

Ash 6" N29°W 37.65 feet (Now a 9" Ash scribed w/16 S21BT N21½°W 37.6 ft.)

Set a 6" diameter, 24" long cylindrical concrete monument capped with a 3" dia. bronze tablet stamped:

Note

Monument set 4" below

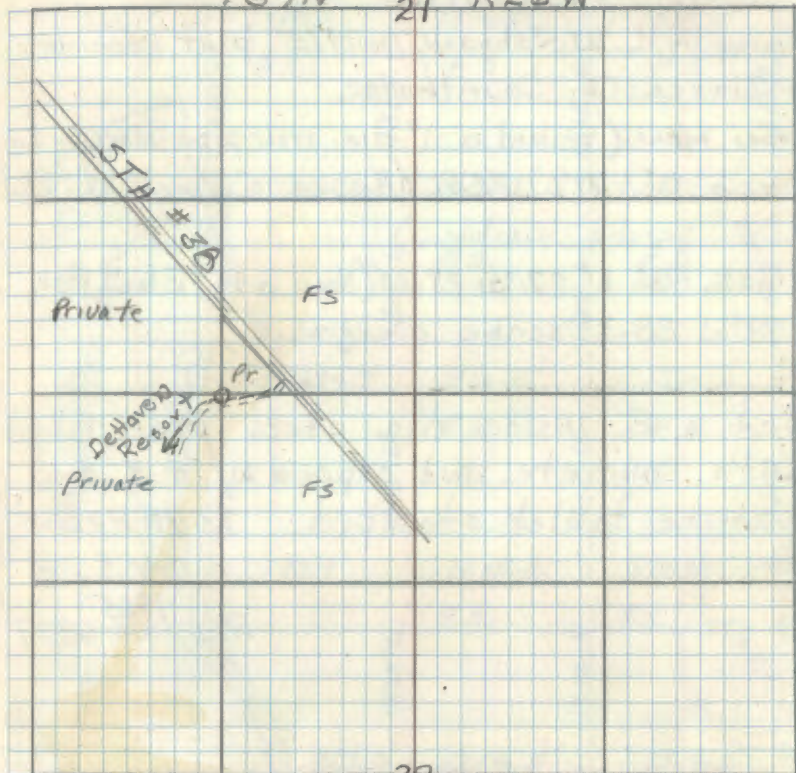
road surface. on N. shoulder

Cedar post 4"x4"x72" long w/ FS standard signs 54-24 & 54-9 attached set south 21.2' Co. B.Ts are in good condition, I placed BT shields on them.

Affidavit RHM

CERTIFICATE FILED

T59N 21 R26W



June 18, 1965 ²⁸ R.H.M. Donald

Handwritten signature/initials
11/6/67

63 T-11

Center 1/4 Section 28

Survey by L. W. Johnson in 1925 plat recorded
in Itasca Co. Courthouse

Iron mon. (Found a 1" dia. iron pipe marking Cor.)
Birch 6" N79°W 25.80' (Now a 10" Birch N77°W
25.8' scribe visible.)

Black Ash 6" S71°W 28.30' (Now a 14" Black Ash
S79°W 28.3' scribe overgrown.)

Set a 2" inside dia. steel pipe filled
with concrete and capped w/ a 3" dia.
bronze tablet stamped T39N R26W

C 1/4 S28

1965
RLS NO 6807

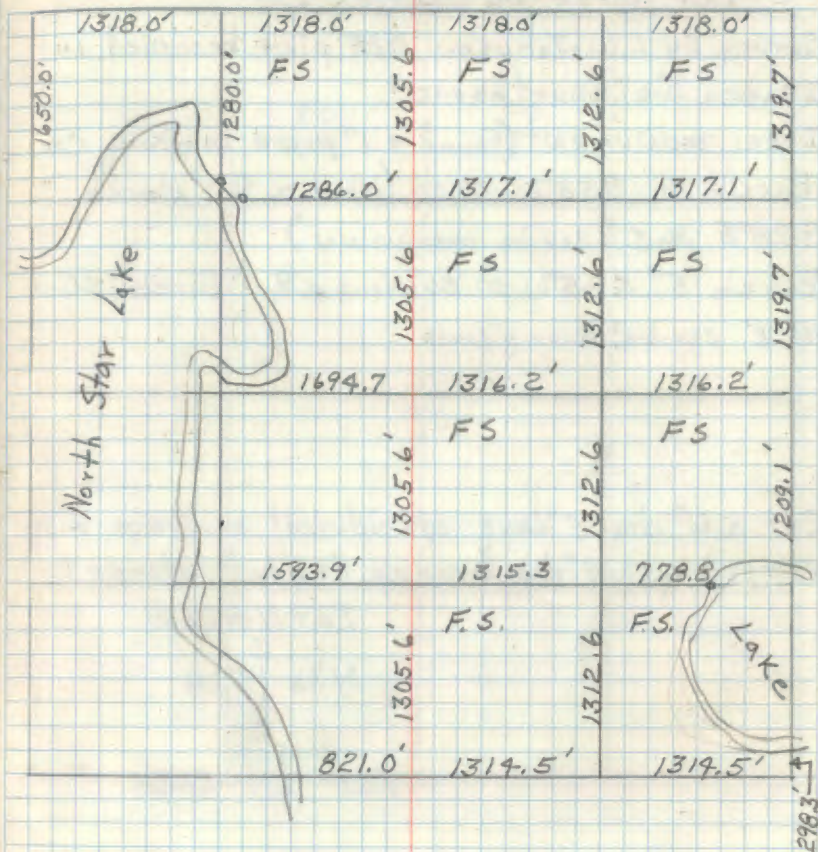
Steel sign post set due North 4.5 feet
w/ standard F.S. signs 54-25' 54-4 attached
Black Ash 9" N7 1/2° E 19.0' MKD C 1/4 S28 BT
Black Ash 6" S2° E 17.2' MKD C 1/4 S28 BT

4-26-65 A. H. McDonald

B. W. Haid

11-28-67 James Ekstrom
checked OK

Affidavit RHM

T5 **CERTIFICATE FILED**

64 S-11 Affidavit RHM

S-11

Center North $\frac{1}{16}$ Section 28

Survey by L.W. Johnson 1925 plat recorded in
Itasca Co. Courthouse:

Iron monument (Found a 1" pipe marking Cor.
Birch 4" S33°E 30.50' (Now a 8" Birch
S28°E 30.5' scribe overgrown)

Birch 5" S45°W 10.50' (Now a 9" Birch S60°W
10.8' scribe overgrown)

Set a 6" dia. 5' Long cylindrical concrete mon.
capped w/ a 3" dia. bronze tablet stamped:-

T59 N R26W

C
N $\frac{1}{16}$ | S28

C
1962
RLS NO 3628

Birch 7" S39 $\frac{1}{2}$ °E 23.45 MKD S28 BT

Birch 7" N39 $\frac{1}{2}$ °W 19.03' MKD S28 BT

Ash 9" N38 $\frac{1}{2}$ °E 65.35' MKD CN $\frac{1}{16}$ S28 BT

1/2/62 R.H. McDonald

1-12-62
D.K.

R.A. Walden

T59 R26W **CERTIFICATE FILED**

	FS	FS	
		○	
	Private	FS	
		28	

65 S-10, 11 Section 28

S.M.C. on N $\frac{1}{16}$ line East shore North Star Lk.
Survey by L.W. Johnson 1925 plat recorded
in Itasca Co. Courthouse.

Iron mon.

Baum. of Gil. 10" N 05' W 12.60'

Baum. of Gil. 10" S 40' E 40.00'

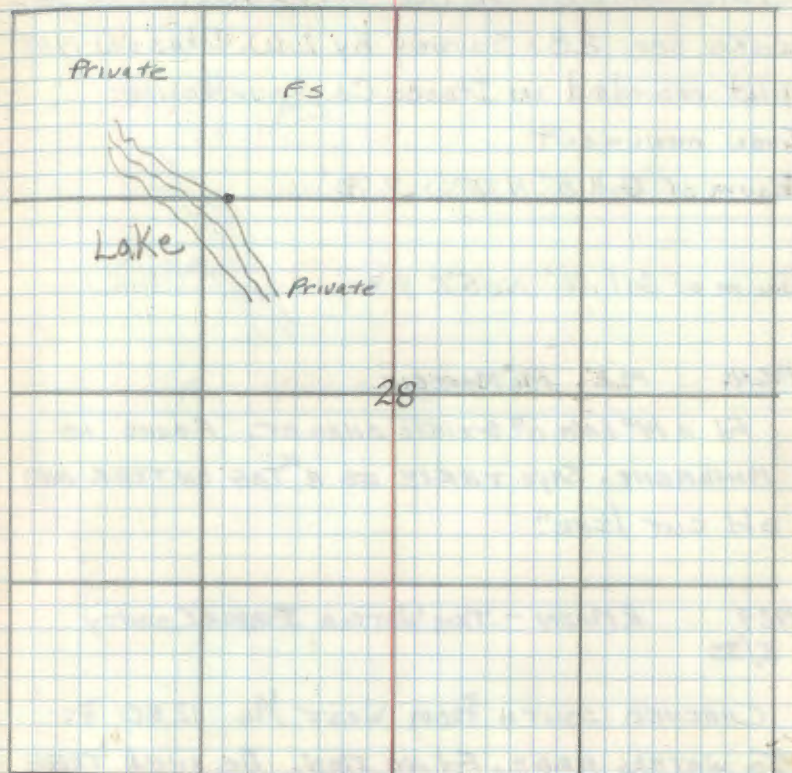
~~500 ft by Manigle~~

~~1964 AL McMANIGLE~~

~~fd a 14" Baum of Gilead snag BT. Found
no monument. Says there is a "tag on tree"
and old cut line.~~

1989. R MAIN & TIM WATSKA (ITASCA COUNTY)
CHAINED ~~WEST~~ WEST FROM CN $\frac{1}{16}$ 1286'. fd
NO IRON OR BTS. CHAINAGE CAME TO WATERS
EDGE. I FEEL THE EVIDENCE @ THIS MC IS
DESTROYED. THE LAND OWNER HAS DONE A LOT OF
ACTIVITY IN THIS AREA.

CERTIFICATE FILED



66

S.M.C. on West $\frac{1}{16}$ Line North bak. North Star
Lake sec 28. Survey by L.W. Johnson 1925
plat recorded in Itasca Co. Courthouse:

Iron monument

Baum of Gil. 8" N35°W 7.70'

Baum of Gil 10° N05°E 9.30'

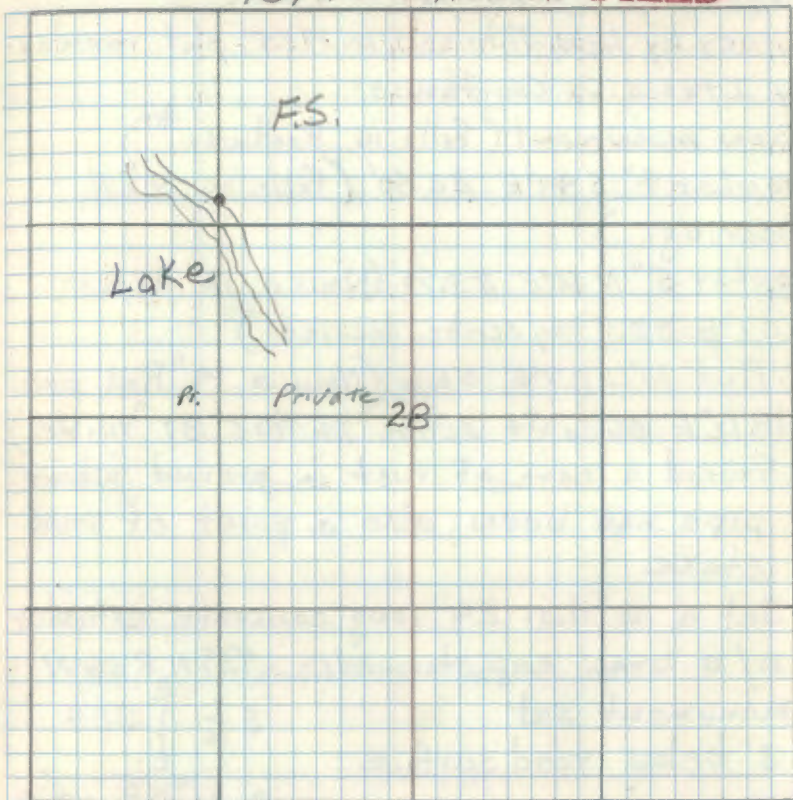
1964 M.L. McMANIGIE

Fd A 14" BAUM OF GILEAD SNAG BT. FOUND NO
MONUMENT. SAYS THERE IS A "TAG ON TREE AND
OLD CUT LINE":

1989 R. MAIN - TIM WATSKA ITASCA COUNTY
5/30

CHAINED SOUTH FROM WEST $\frac{1}{16}$ 1280 FT
TO WATERS EDGE. Fd NO IRON. DECAYED TREE
FOUND WHICH COULD BE AN OLD BT. HAVE
TO RETURN AND TRY TO FIND THE 1964 TAG.

CERTIFICATE FILED



67 21-11

Center South 1/16 Section 28

Survey by L.W. Johnson in 1925 plat recorded in Itasca Co. Courthouse:

Iron monument (Falls in Roadway*)
poplar 4" S 49°E 22.80' (Falls in REH clearing.)

poplar 5" N 30°E 33.70' (Now a 12" Aspen N 37°E 33.7 w/ scribe decayed.)

N. Pine 10" S 27°E 56.6' (Now a 14" Red pine S 18 1/2°E 56.6 ft scribe "1/16 N 05 BT" visible.)

* Found a core of rust in ground where pipe had been, also a point of wood stake

Set a 6" dia. 24" long concrete cylinder w/ a brass cap stamped: - T59N R26W
monument set 3" below road surface

RLS 1965 No 6807

I rescribe the county red pine with letters "BT" - 14" Red pine S 18 1/2° E 56.6 Feet.

Red pine 18" N 85°E 127.7' MKD CS 1/16 S 28 BT
4" x 4" Red topped cedar post set due North 15.5 Feet w/ FS, standard signs

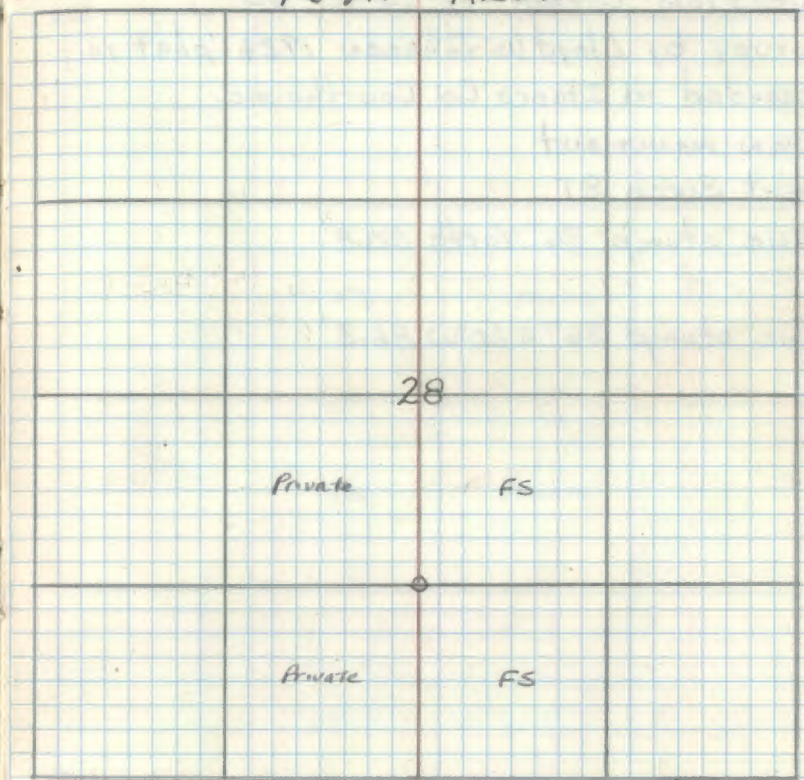
54-2 & 54-4 attached.

4-26-65 A.H. McDonald

Bill Leide

Affidavit RHM

CERTIFICATE FILED
T59N R26W



68

Section Corner 19-20-29-30

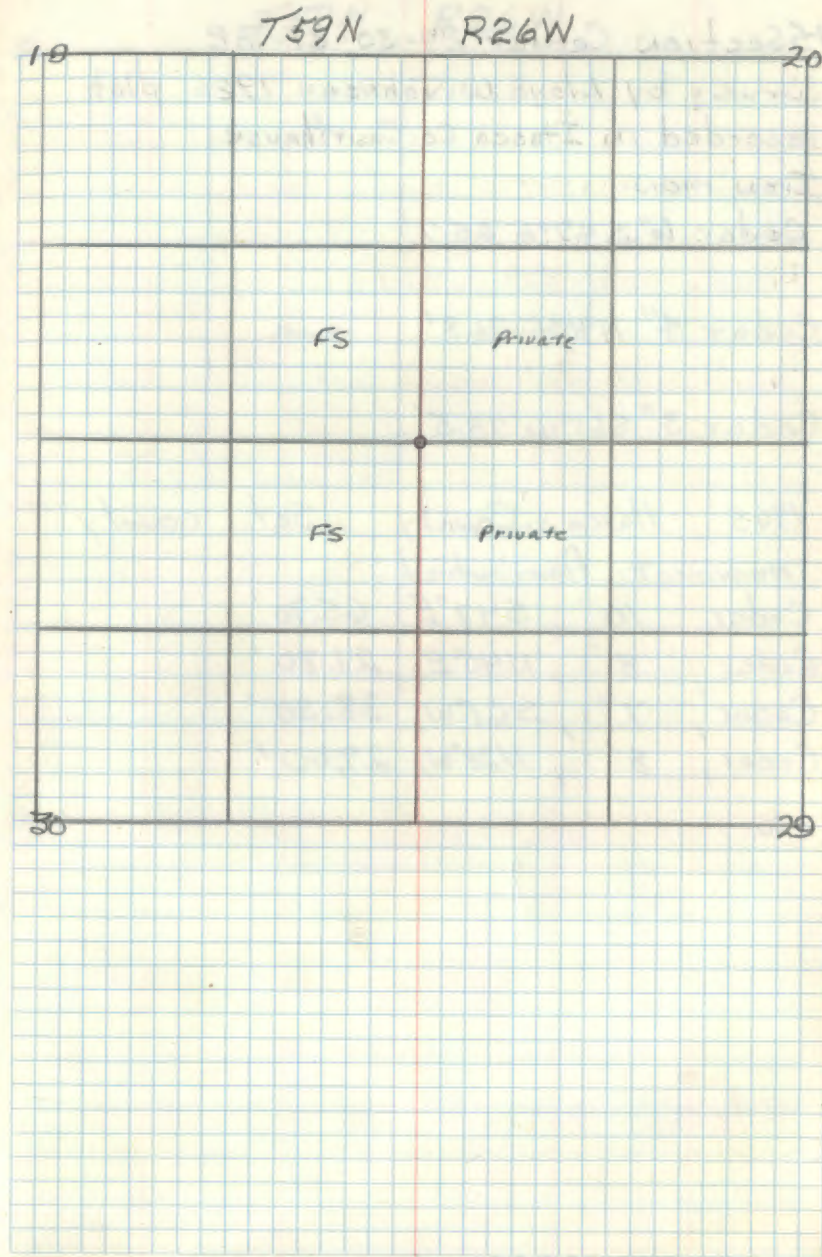
Survey by Lloyd W. Johnson 1926 plat is recorded in Itasca Co. Courthouse.

Iron monument

Gov't Birch-BT

Pine stump 36" North 50.8'

Pine stump 36" S 20°W 86.3'



69

V5 Section Corner 29-30-31-32

Survey by Lloyd W. Johnson 1926 plat
- recorded in Itasca Co. Courthouse.

Iron mon.

Cedar 6" S 47° E 65.7'

Cedar 4" N 40° E 21.8'

Cedar 3" S 61° W 38.5'

1965 Itasca County Set county
monument from which:

Cedar, 10", S 47° E, 65.70'

Cedar, 8", N 40° E, 21.80'

Cedar, 7", S 61° W, 38.50'

Cedar, 8", N 28° W, 29.00'

T59N

R26W

30

29

Private

private

Private

Private

31

32

70 T-5

Quarter Corner Sections 29-30

Survey by Lloyd W. Johnson 1926

Iron mon. (Found a 1 1/2" dia. pipe marking cor.)

Balsam 5" S75°E 27.1' (Now a decayed

Balsam stump S71 1/2°E 27.1 Ft. ^{Part of a reverse} Scribe is visible

Balsam 10" S50°W 20.0' (Now a decayed Balsam

stump S60 1/2°W 20.0 Ft.)

Found a squared scribed post beside the iron

pipe.

Set a 2" inside dia., 5 ft. long galvanized steel

pipe filled w/ concrete and capped w/a 3"

dia. bronze tablet stamped: T59N R26W

1/4
S 30 S 29

1965
RLS NO 6807

Cedar 13 "S80°W 10.55 Ft. MKD 1/4 S30 BT

Cedar 11 "S11 1/2°W 69.0 Ft. MKD 1/4 S30 BT

Steel sign post 72" long w/ F.S. standard signs

54-2 & 54-9 attached due West 5.1 Ft.

May 5, 1965 John H. McDonald

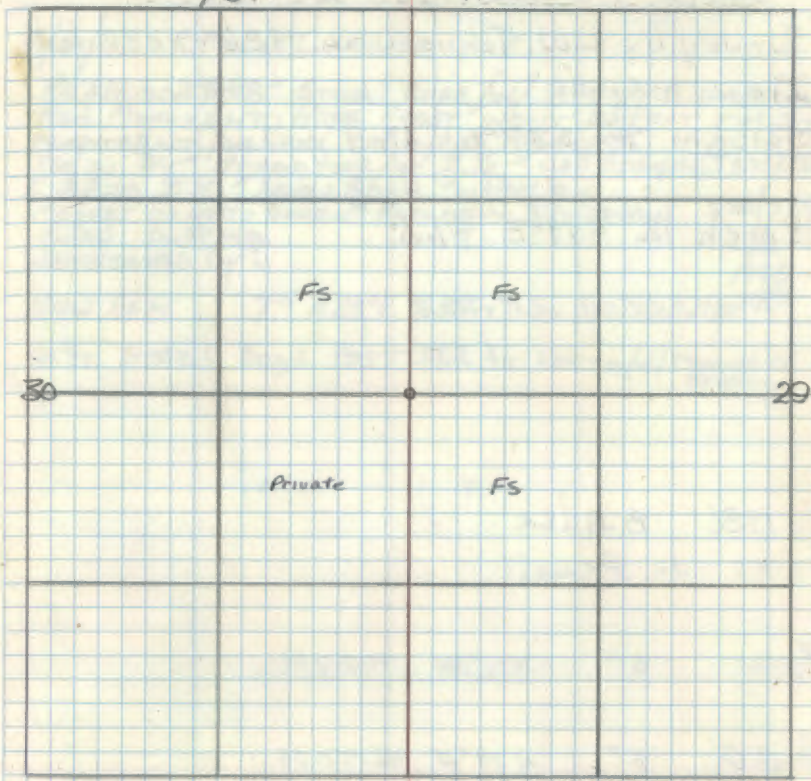
Bill Seide

Affidavit R#M

T-5

T59N

R26W



Bill Seide
1/2/67

71 U-5

South $\frac{1}{16}$ Sections 29-30

Survey by L.W. Johnson in 1926 - recorded

Iron mon.

Balsam 4" S37°W 14.9'

Birch 12" S19°E 47.3'

1986 B. Auser

Ties to PR nail

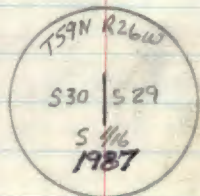
Loplar 6" N11°W 41.84ft

B.O.P. 5" N29°E 46.50ft

From Temp. S $\frac{1}{16}$ to true S $\frac{1}{16}$

we go North .27' and East .48'

set a



T59N

R26W

5/6/93 R. MAIN L. KRAUSE

REPLACED 2" X 48" STEEL PIPE / W / 8 FT OF ALUMINUM
ROD MONUMENT; HOPE FROST WONT EFFECT THIS
MONUMENT PUSHING IT OUT OF THE ROAD.
ROD IS 3/4" DIAMETER / W / 2 1/2" CAP STAMPED: T59R26W
CAPES ± 10" BELOW ROAD SURFACE.

MAGNET ON NORTH SIDE OF MONUMENT 3 FT BELOW ROAD SURFACE

WITNESSED BY:

NEW ASH 7" N29°E 96.55 FT TO SPK MLD. S $\frac{1}{16}$ S29 45 FT.

8 FT STEEL SIGN POST 33.2 FT NORTH / W / MONUMENT SIGN. 29

Private

FS

Private

Private

6/6/87 R. MAIN

SET A 2 1/2" X 4' GALVANIZED STEEL PIPE WITH
3" BRASS CAP 1 FT BELOW ROAD SURFACE.

WITNESSED BY

ASH 8" N47W 111.64' TO NAIL

ASH 5" N30W 81.52 TO NAIL
NOW BROKEN OFF E 4 FT STUB

ASH 7" N5E 52.12 TO NAIL

72 S-5

North $\frac{1}{16}$ Sec's 29-30Survey by L.W. Johnson 1926 recorded
Iron mon (Found a $\frac{1}{2}$ " dia. iron pipe marking cor.)Ash 10" N40°W 34.7 (Now a wind tipped
dead Ash w/ scribe visible N37°W 34.7 ft.

Ash 8" East 44.0'

Found a squared wood post lying beside iron
pipeSet a 2" inside dia., 5' long galvanized steel
pipe filled w/ concrete and capped with a 3"
dia. bronze tablet stamped T59NR26WN $\frac{1}{16}$
S30 | S29 ✓
1965
RLS NO 6807

Ash 5" N76°W 28.2 Feet MKD X BT

Ash 6" S15°W 14.2 Feet MKD N $\frac{1}{16}$ S30 BTSteel sign post 12" long with F.S. standard signs
54-2 & 54-4 attached ^{50"} East 2.8 Feet.

May 5, 1965 Robert H. McDonald

To bring this corner to standard I cut BT.

Ash 6" N36E 12.85" N $\frac{1}{16}$ S29 st.

Steel post 8" west 6.2" 54-2 & 54-9

RR-750-4 by Olsen 5/12/80 Ronald Olson

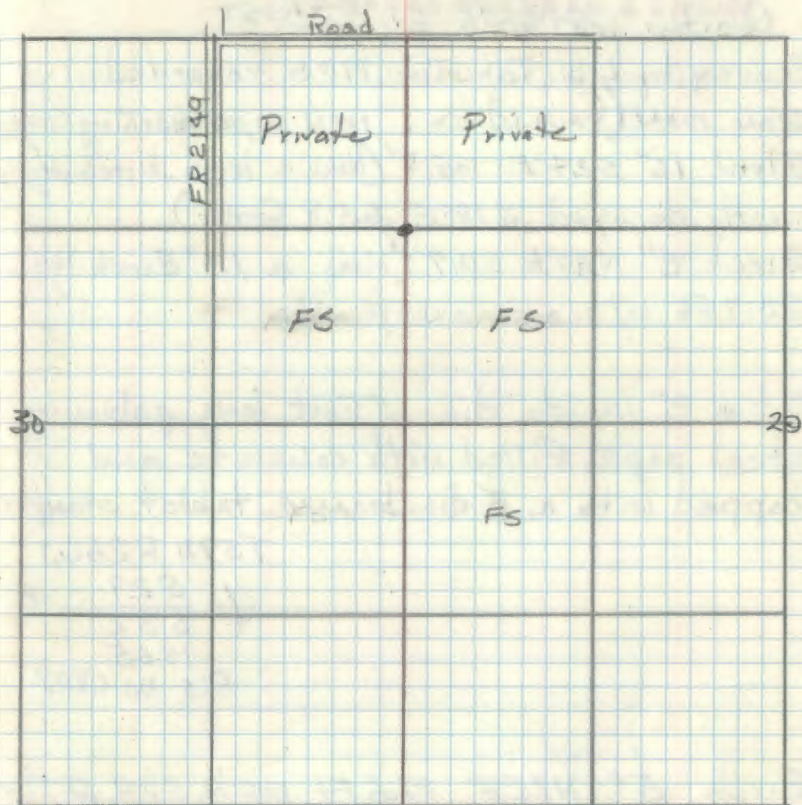
Affidavit

RHM

T59N

R26W

S-5



Robert H. McDonald
5/12/67

73 V-7

Quarter Cor. Sec. 29-~~20~~³²

Survey by L.W. Johnson 1926 recorded.

Iron mon (Found a 1" iron pipe marking corner)

Birch 16" S24°E 65.8' (Now a large birch stump mostly decayed S18°E 65.8 feet.)

Birch 8" N30°E 20.7' (Now a 13" Birch N46°E 20.7 ft w/ scribe overgrown)

Set a 2" inside dia. 5 foot long galvanized steel pipe filled with concrete and capped with a 3" dia. bronze tablet stamped

T59N R26W

$$\begin{array}{r} 1 \text{ S29} \\ 4 \text{ S32} \\ 1965 \\ \text{RLS NO 6807} \end{array}$$

Birch 5" N36°E 21.6 ft. MKD 1/4 S29 BT ✓

Birch 8" S38 1/2°E 21.9 ft. MKD 1/4 S32 BT ✓

Steel sign post 72" long with F.S. standard signs 54-2 & 54-4 attached due East 3.9 ft

May 13, 1965 *R.H. McDonald**Bill Feild*

Affidavit RHM

CERTIFICATE FILED

T59N 20 R26W

	Private	Private	
	Private	FS	

32

1984 Itasca County

"X" rock, 1'x1', N55°W, 5.61'

"X" rock, 1'x1', N40°E, 46.33'

Ash, 4", S08°E, 30.15'

GLO Birch, 8", N30°E, 20.70'

79

Meander Cor. Sec. 29-32 ?

Survey by L.W. Johnson 1926 - recorded.

Iron mon.

Birch 10" - 51.8'

Ash 7" - 69.6'

T59N

R26W

75 S-7

Center North 1/16 Section 29

Survey by L. W. Johnson 1926 recorded
Iron man (Found a 1" dia iron pipe marking Cor.)
Birch 5" S40°E 22.0' (Now a decayed birch
stump and log S33°E 22.0')

Birch 6" N35°E 32.0' (Now a stump and log
w/ few scribe marks visible N42°E 32.0')

A squared scribed cedar post was found alongside
of the pipe.

Set a 2 inch inside diameter, 5 Foot long
galvanized steel pipe filled with concrete
and capped with a 3 inch diameter bronze
tablet stamped:

T59NR26W
N $\frac{1}{16}$ S 29
1965
RLS NO 6807

Cedar 6" N60 $\frac{1}{2}$ °W 24.2 Ft. MKD CN $\frac{1}{16}$ S29 BT

Cedar 5" S27°W 16.5 Ft. MKD X BT

Steel sign post 72" long with F.S. standard

signs 54-2 & 54-4 attached set West 5.6'

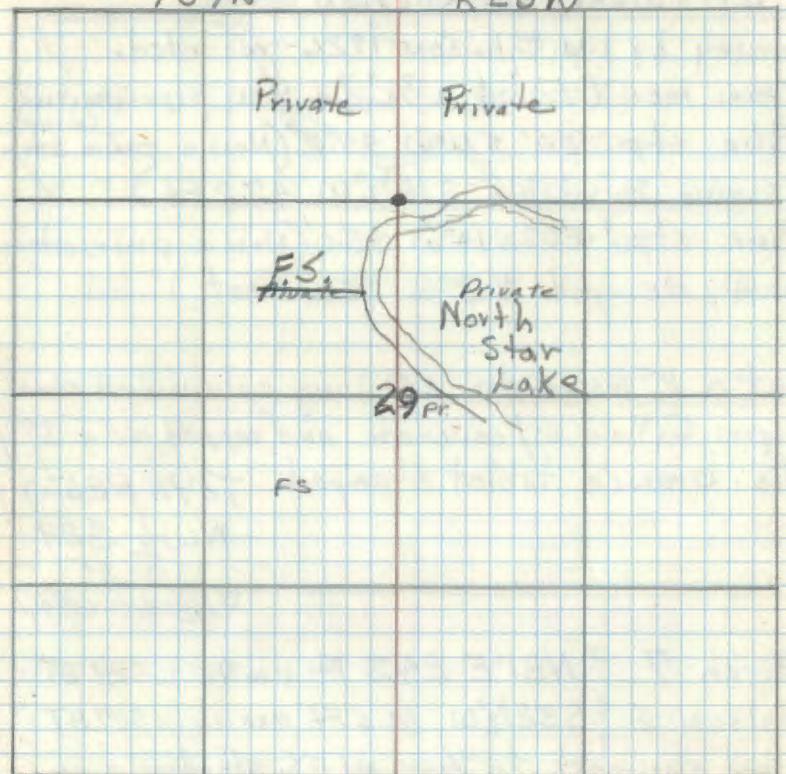
June 23, 1965 R.A. McDonald

Affidavit RHM

S-7

T59N

R26W



Corner is Approx 100' North of lake (North Star)

To bring this corner to standard I cut new BT

Ash 7" N44°E 19.67 LN $\frac{1}{16}$ S29 BT

Steel post 8' west 9.0' 54-2 & 54-9

R9-7150-4 by Dexon 5/12/80 Ronald Olson

76 S-6

North West 1/16 Section 29

Survey by L.W. Johnson 1926 - recorded.

Iron mon. (Found a 3/4" dia. iron pipe marking corner)

Pine stp. 20° 51' W 47.2' (Now a pine stump w/ scribe "B" visible S 16 1/2° W 47.2 Ft.)

Pine stp. 20" x 14° W 45.0' (Now a pine stump mostly decayed N 30° W 45.0 Feet.)

Set a 2" inside dia. 5 ft. long galvanized steel pipe filled w/ concrete and capped w/ a 3" dia. bronze tablet stamped:

T59N R26W
NW 1/16 S29
1965
RLS NO 6807

Birch 7" N 81° E 24.3 Ft. mkd NW 1/16 S29 BT

Balsam 6" S 32 1/2° W 10.6 Ft. mkd NW 1/16 S29 BT

Steel sign post 72" long w/ F.S. standard signs

54.2 & 54.4 attached due West 3.8 Feet.

May 5, 1965 *Phyllis McDonald**Bill Seide*

To perpetuate this corner I cut new BTs

Aspen 7" N 64° W 39.55' NW 1/16 S29 BT

Balsam 4" N 45° W 24.38' X RT.

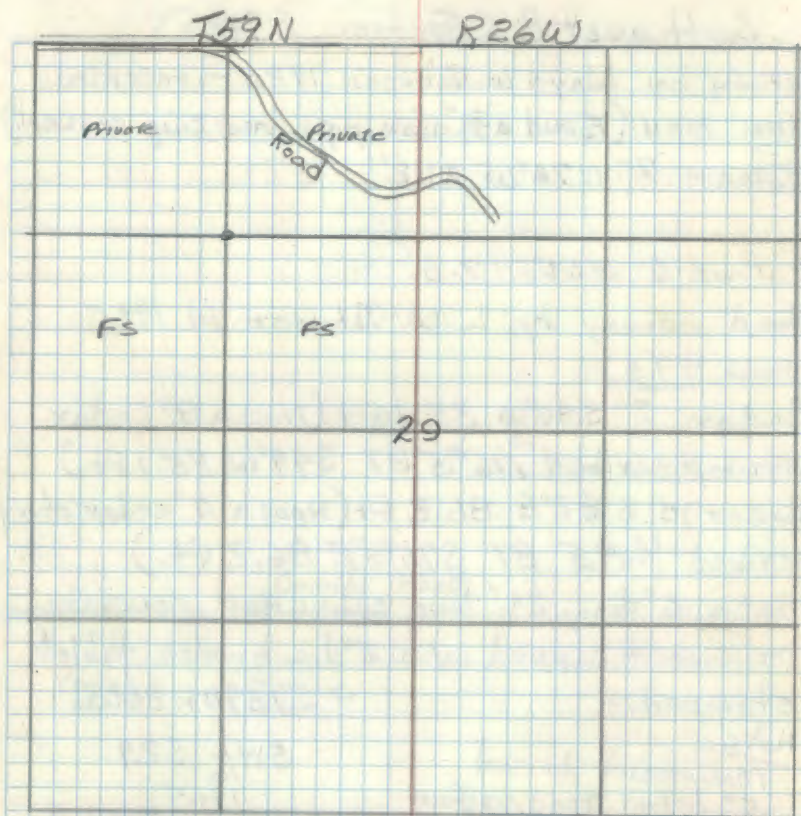
Birch 10" N 21° E 33.23' NW 1/16 S29 BT

Steel Post 8' East 5.0' 54.2 & 54.9

R9-7150-4 by Olesen 5/12/80
Ronald Olesen

Affidavit RHM

S-6



A recent survey line is cut out North and East from this corner.

Phyllis McDonald
5/12/65

77 21-6

South West 1/16 Section 29

Survey by Lloyd W. Johnson 1926, - recorded.
 Iron mon. (Found a 3/4" iron pipe marking corner.)
 Balsam 7" N76°W 21.2'

W. Pine 6" N04°E 7.3'

Road survey by L.W. Johnson in 1935

New BTs

Cedar 7" S40°W 35.1 Ft (Now a 9" cedar
 stump scribed 1/16#5 BT S49°W 35.1 Ft.) ✓
 Cedar 10" S 82°E 86.2 Ft (Now a 11" cedar stump
 scribed 1/16#5 BT S75 1/2°E 86.2 Ft.) ✓

Set a 6" dia., 24" long cylindrical concrete
 monument capped w/ a 3" dia bronze tablet
 stamped:-

T59NR26W

Note
 Monument buried
 5" below road surface

SW 1/16 S29
 1965
 PLS NO 6807

Elm 11" N16°W 62.2 Ft MKD SW 1/16 S29 BT ✓
 Ash 7" N25°E 67.3 Ft MKD SW 1/16 S29 BT ✓
 Cedar post 4"x4"x72" with F.S. standard
 sign 54-4 attached due North 17.7 Feet ✓

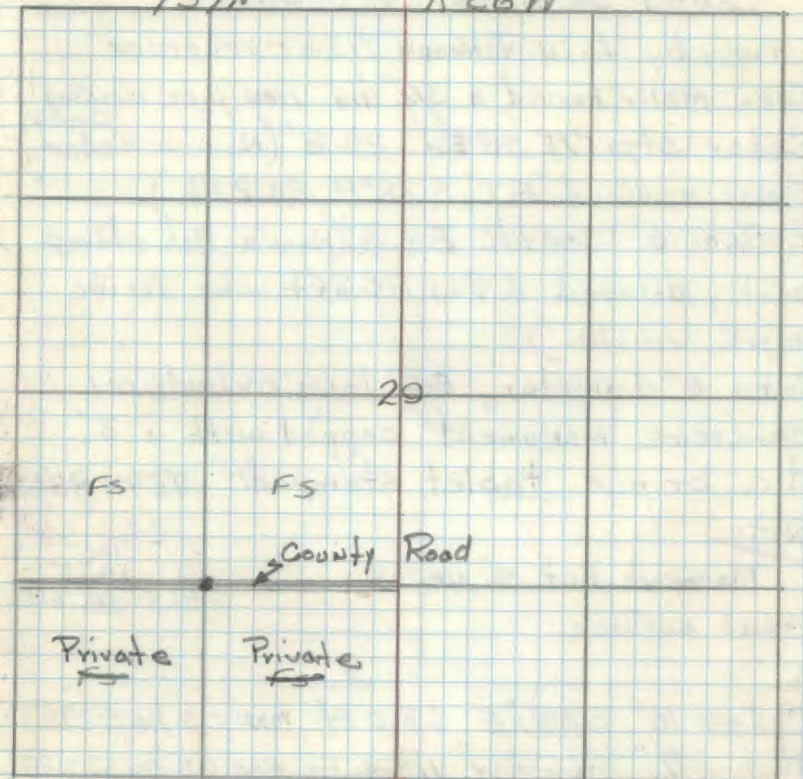
May 13, 1965 J.A. McDonald
 Bill Heide

H. Adavit RHM

21-6

T59N

R26W



11-25-86 b. Ausk G. Robertson
 Found Top of Monument Brake off
 Needs to be Replaced

Ausk
 11/2/87

CONTINUED ON BOOK #4 PAGE 53

78 21-7

Center South $\frac{1}{16}$ Section 29

Survey by L. W. Johnson 1926 - recorded.

Iron mon. Found a $\frac{3}{4}$ " dia. iron pipe markingCedar stp. 7" $S39^{\circ}E$ 20.2' (Now a cedar
stamp scribed "BT" $S28^{\circ}E$ 20.2 Ft.) ✓
COWBYB. Ash 6" South 84.8' (Now a Ash stump
partly decayed $S4^{\circ}W$ 84.8 Ft one scribe
mark visible.)Set a 6" diameter, 24" long cylindrical
concrete monument capped with a 3"
dia. bronze tablet stamped: T59N R26WNoteMonument set 4" under
road surface.✓ CST 1529
1965
RLS NO 6807Cedar 10" $S39\frac{1}{2}^{\circ}E$ 63.0 Ft. MKD CS $\frac{1}{16}$ S29 BT ✓Ash 7" $N66\frac{1}{2}^{\circ}W$ 114.4 Ft. MKD CS $\frac{1}{16}$ S29 BT ✓Cedar ^{Post} 4" x 4" x 72 w/ F.S. standard signs 54-2

§ 54-4 attached set due North 16.25 Ft. ✓

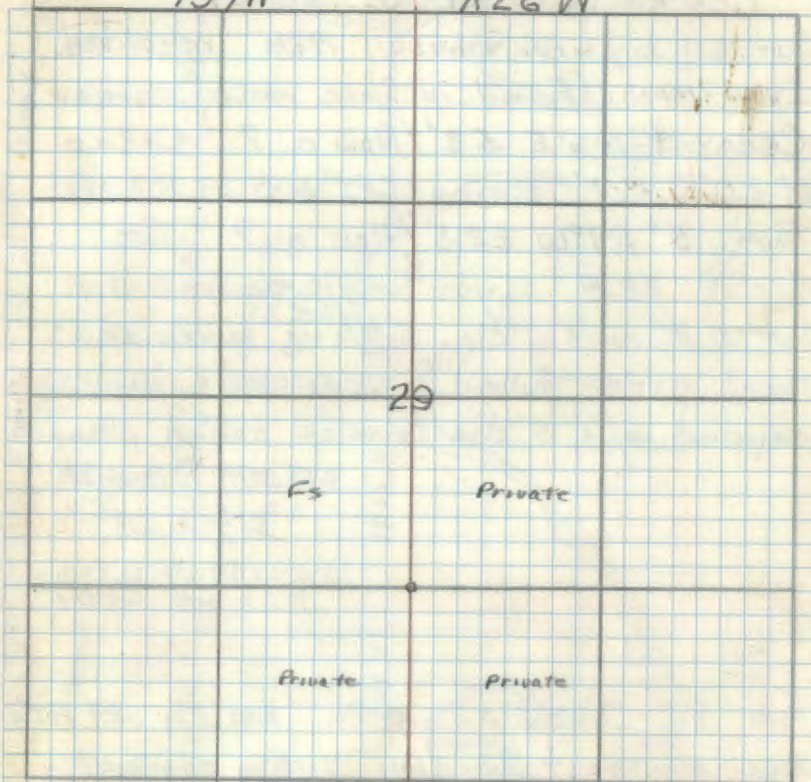
May 13, 1965 R.H. McDonald

Affidavit RHM

U-7

T59N

R26W

R.H. McDonald
5/13/65

See T59N R26W BK 4 pg 37

Center Quarter Cor. Sec. 29

Survey by L.W. Johnson 1926 recorded
Iron mon. (Found in place marking corner.)

Cedar 4" N 6° E 5.3' (Now a 7" Cedar ✓
N 20° E 5.7' scribed CFT 1/4 S 29 BT

Tam. 5" S 9° W 22.5' (Now a 9" Tam.
S 9° W 22.8' scribe mostly decayed.) ✓

Set a 2" inside dia. 5' long galvanized
steel pipe filled w/ concrete and
capped w/ a 3" dia. bronze tablet stamped:

T 59 N R 26 W ✓

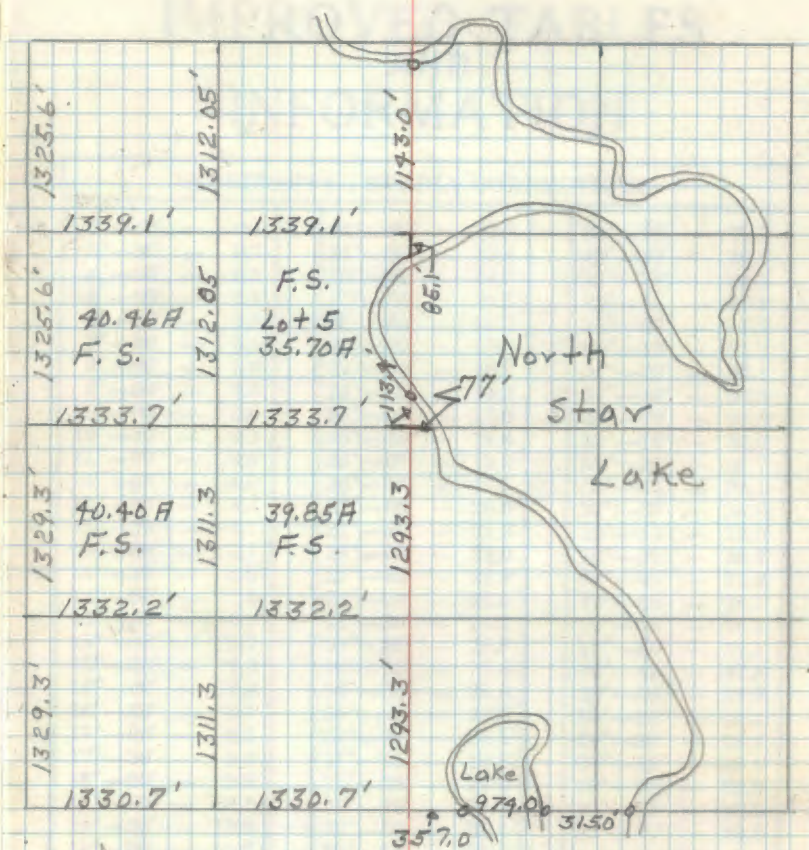
C 1/4 S 29

1964

RLS NO 6807

Tam. 8" S 63 1/2° W 23.0 ft. MKD C 1/4 S 29 BT ✓
Steel sign post 72" long w/ F.S. standard
signs 59-2 & 59-4 attached due South 5.5 ft.

12-15-64 Robert H. M. Donald
Bill Haide



Robert H. M. Donald
12/15/64

See T 59 N R 26 W bk 4 pg 36