

CORNER
RESTORATION
T 57N R 25W

CORNER RESTORATION T 57N R 25W

MINING TRANSIT BOOK

363A

BOOK 1

9. / 25

Out of

0
1
2
3
4
5
6
7
8
9
10
11
12
13
14
15
16
17
18
19
20
21
22
23
24
25
26
27
28
29
30
31
32
33
34
35
36
37
38
39
40

T 57N R 25W

76 P.M

42	43					25	24	23
6	5	4	3	2	1			22
	10	8	36	37	38			21
	41							
7	6	8	9	35	10	44	11	12
	11	12						26
	7	40	9	19	20	34		14
								47
18	21	17	39	16	33	15	32	14
				28				13
					45	30	15	16
					29	31		17
19	20	21	46	22		23		24
30	29	28	27	26				25
31	32	33	34	35				36

Colored Numbers, refer to
Page on which Notes for
That Corner May Be Found.

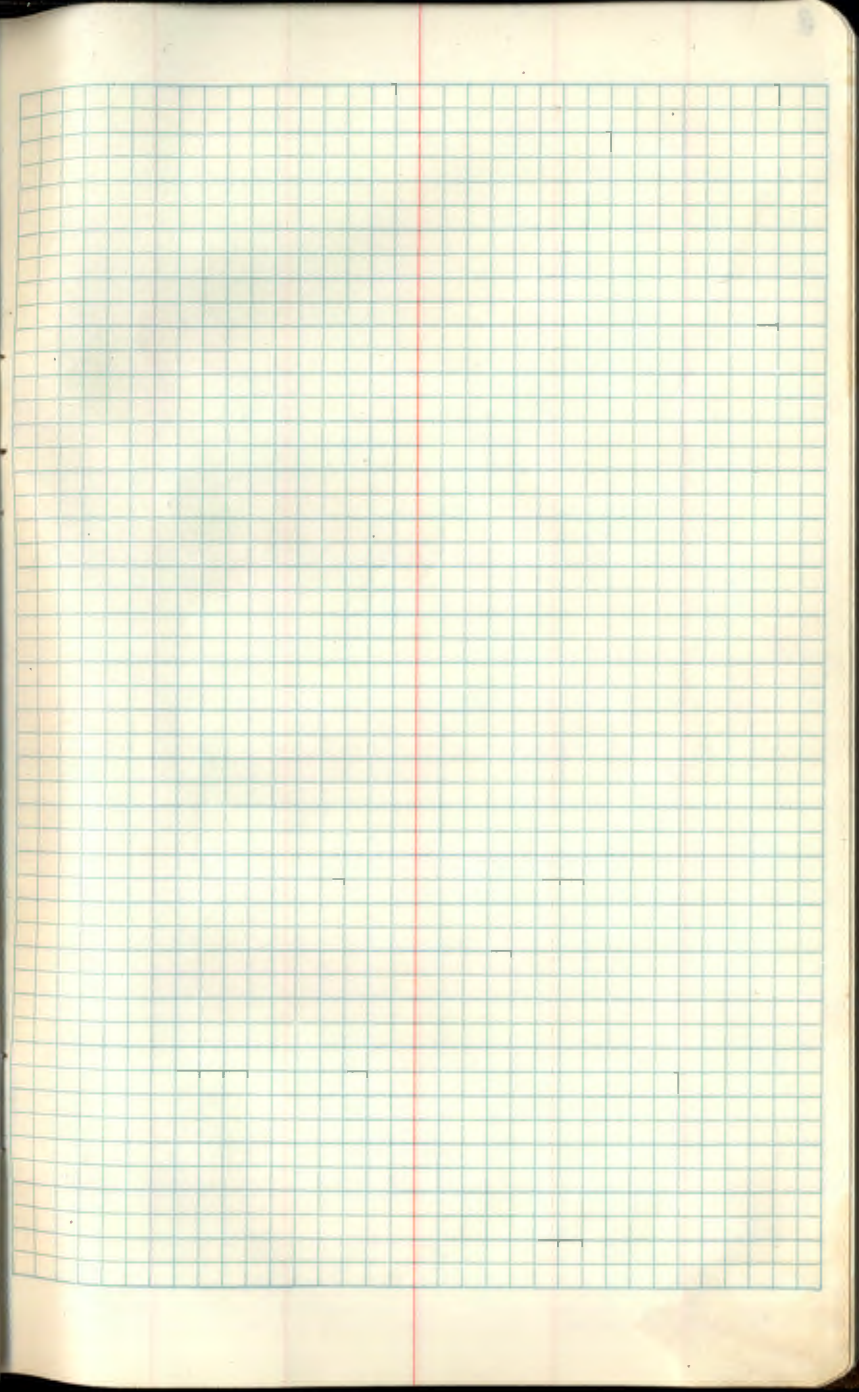
Notes For North line 14 Notes
of Section 18 Base Contourline

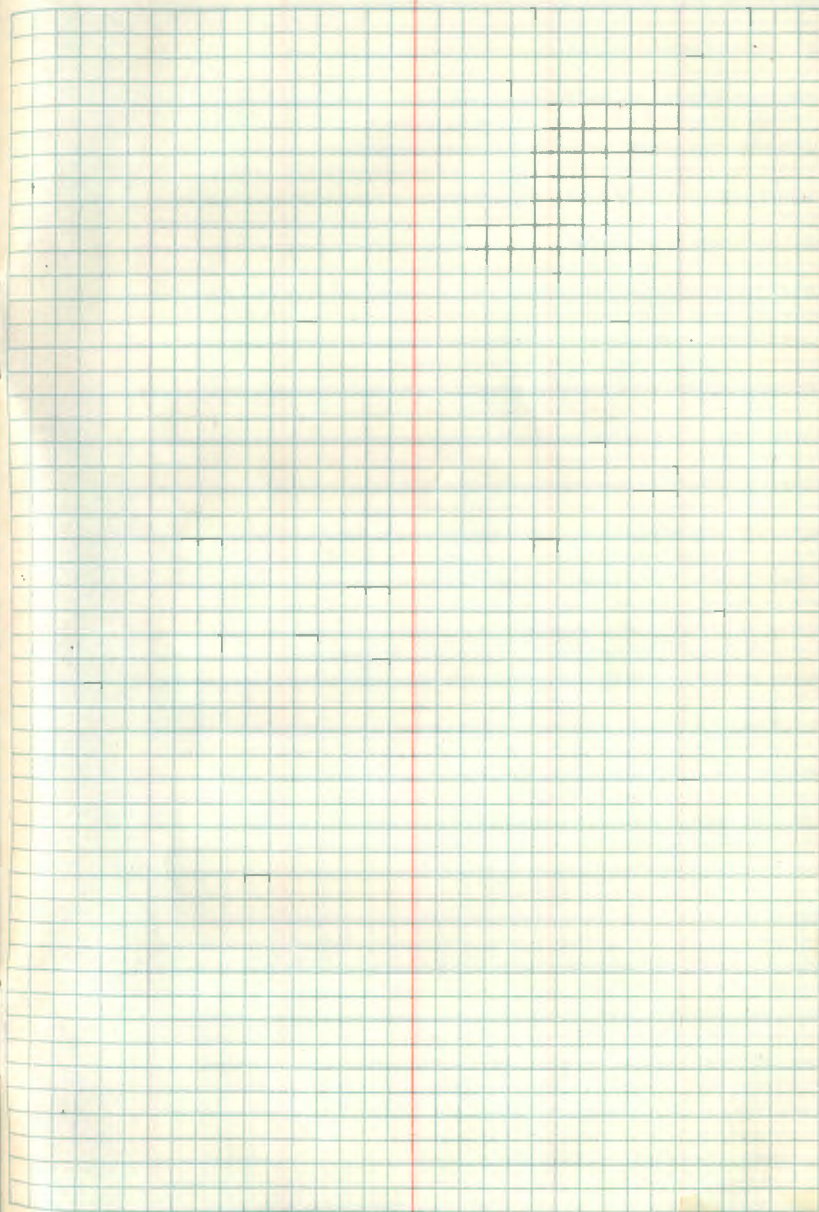
1319.6' 1296.9' 1283.25' 1101.75'

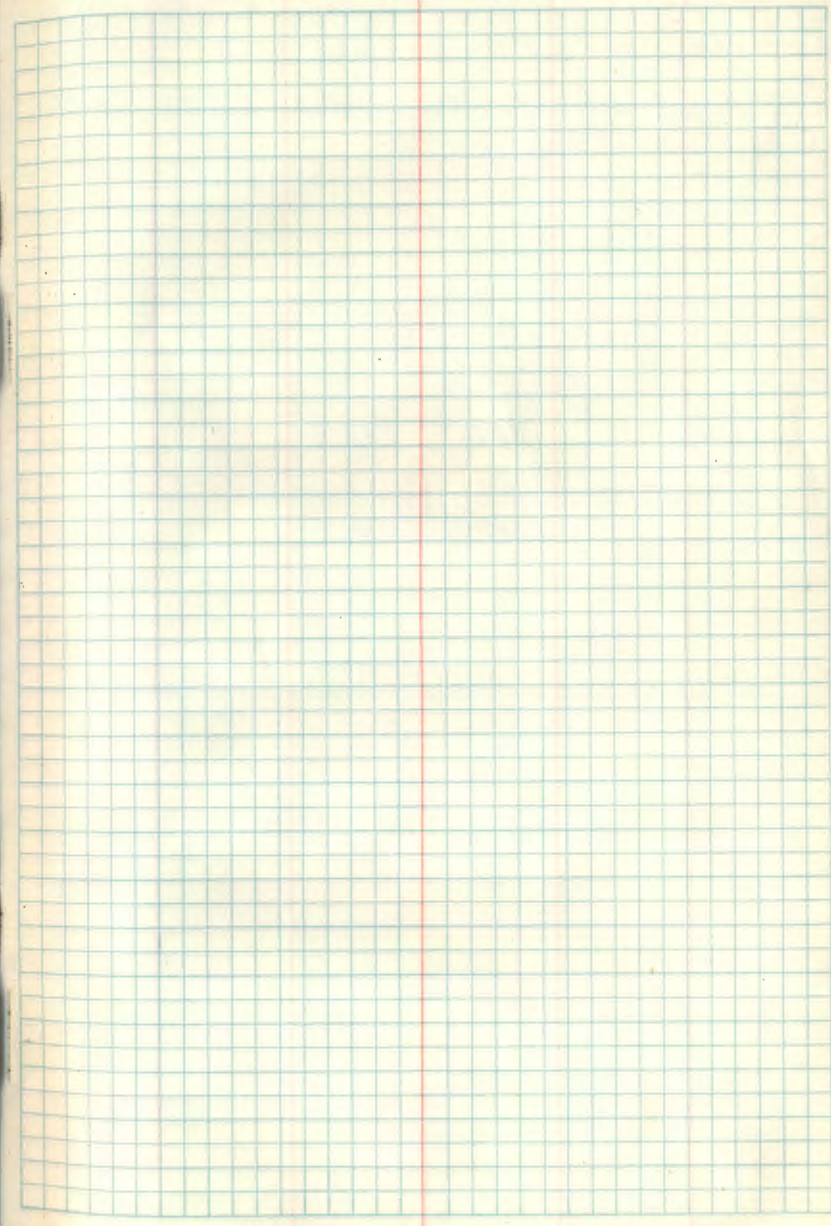
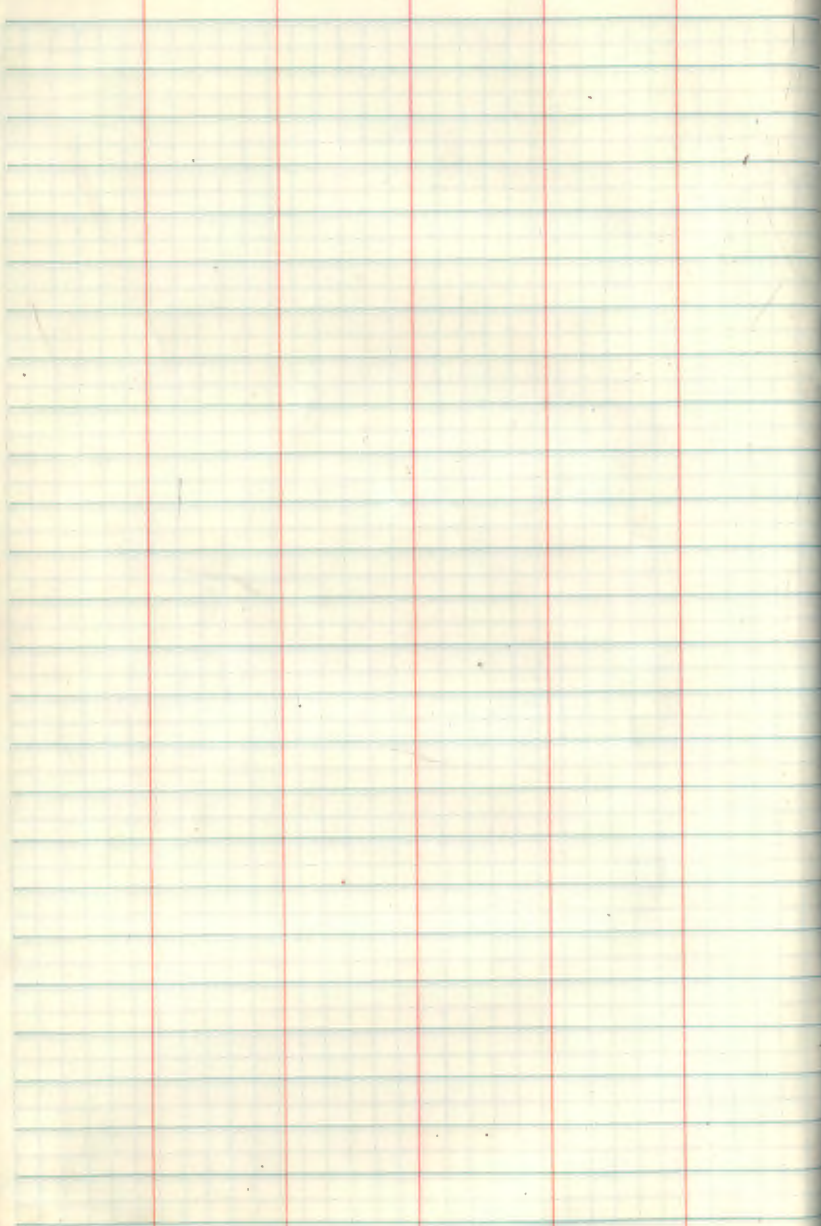


19

Faint, illegible handwriting is visible at the top of the page, possibly including the word "VOLUME".







Blank lined page with four vertical red margin lines.

Grid page with faint mirrored text bleed-through from the reverse side. The text is illegible but appears to be a list or table.

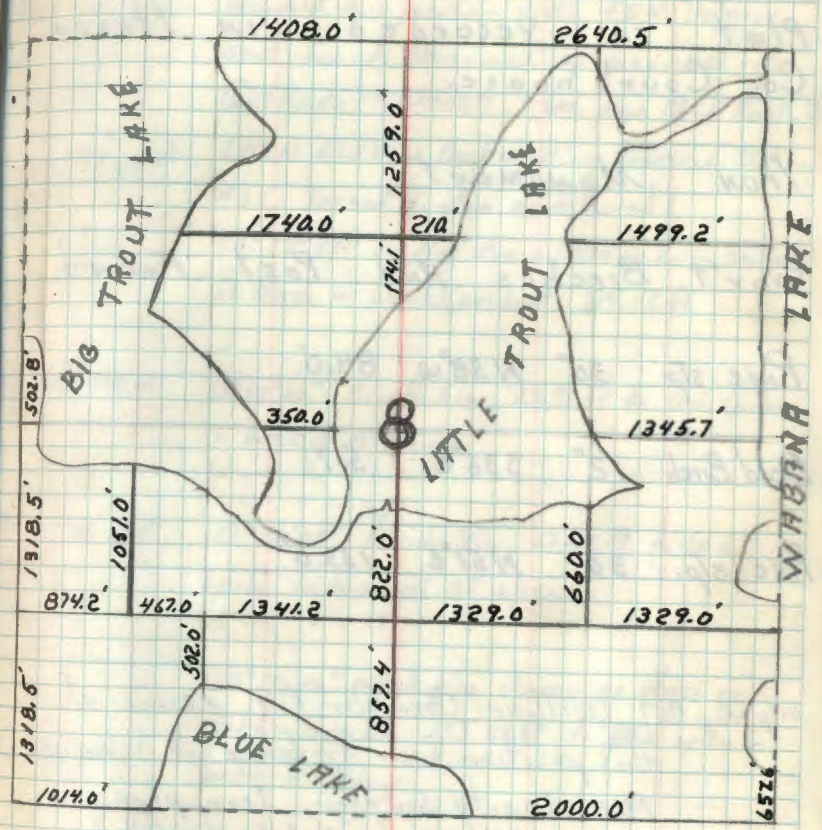
6
 Quarter Con. Sec's. 7-8
 Survey of P.C. Warner in 1915.
 Plat is recorded in Itasca
 Co. Courthouse.

Iron Monument:

Gov't Cedar & Post Found.

Balsam 10" west 132.5'

Ash 4" N60°E 45.8'



Section Cor. Sec's. 7-8-17-18
Survey of P.C. Warner in 1915.
Plat is recorded in Itasca
Co. Court house.

Iron Monument

Gov't Birches And Post Found.

Pine stp 30" N58°W 84.0'

Dead Birch 12" S36°E 5.7'

Pine stp. 30" N51°E 133.0'

July-Aug 1967 William Obermar RLS, recovered
this position from evidence of February
1915 County Survey, Iron pipe
and old BT's. Certificate filed
in Itasca Co. Recorder's office (#259087)
and New BT's Marked:

Maple	5 in	S51°W	13.0 ft
Birch	5 in	S50°E	12.0 ft
Birch	5 in	N26°W	24.2 ft
Birch	8 in	N41°E	22.5 ft

April 21, 1982 Reached this position with EDM Traverse
and found Monument as described in
Certificate #259087. (See page 19 of Book 2
T57N R25W). Backsighting Traverse Station
#35. Turned angles as followed:
42°37'45" to pine stump (60d spike in center)
no blaze or marks evident. 89.42 ft.

① N25-12W 68°33'20" Birch 5 in, 23.91 ft to 60d spike
in base of BT Blaze.

② N40-53E 129°38'05" ¹⁹⁶⁷ Birch 8 in, 22.43 ft to 60d
spike in base of BT blaze.

150°14'00" rotted pine stump, no blaze or
marks visible 133.62 ft to 60d spike in
center of Stump.

③ S49-14E ¹⁹⁶⁷ 219°31'35" Birch 5 in, 11.86 ft to 60d spike
in base of BT blaze

④ S52-09W ¹⁹⁶⁷ 320°54'35" Maple 5 in, 12.80 ft to 60d
spike in base of BT Blaze

no other evidence found.

Section Cor. Sec's. 4-5-8-9
Survey of P.C. Warner in 1915
Plat is recorded in Itasca
Co. Courthouse.

Iron Monument:

Gov't tamarack stumps Found.

Gov't Cedar 12" S38°W 5.3'

Pine stump 24" North 32.0'

9
Section Cor. Sec's 8-9-16-17
Survey of P.C. Warner in 1915.
Plat is recorded in Itasca
Co. Courthouse.

Iron Monument

Dead Cedar - 12" N45°E 125.0'

Dead Cedar - 12" S50°E 148.0'

1982 ITASCA COUNTY

$\frac{3}{4}$ " I.P. 16 FT WEST OF ROAD E

BERCH 12" N68W 35.12

BERCH 10" S50E 36.59

ASPEN 8" S32W 17.55

ASPEN 7" N65E 31.17

Quarter Cor. Sec's. 5-8
 Survey of P.C. Warner in 1915.
 Plat is recorded in Itasca
 Co. Courthouse.

Iron Monument:

"two Gov't B.T.s Found."

Cedar - 8" S45°E 12.0'

Pine stump 30" N20°W 52.5'

1917
 12" 11.5' 35.2'
 10" 10.0' 30.0'
 8" 8.0' 22.5'
 7" 7.0' 21.7'

Quarter Cor. Sec's. 5-8
 Survey of P.C. Warner in 1915.
 Plat is recorded in Itasca
 Co. Courthouse.

11
South $\frac{1}{6}$ Cor. Sec's 7-8
Survey of P.C. Warner in 1915.
Plat is recorded in Itasca
Co. Courthouse.

Iron Monument.

Pine stp. 40" S60°E 95.7'

Pine stp. 12" N75°W 39.0'

H-6 South West $\frac{1}{4}$ Cor. Sec. 8
 Survey of P.C. Warner in 1915.
 Plat is recorded in Itasca
 Co. Court house.

Iron Monument:

Pine stp. 30" S23°W 40.1'
 42 ft tall S30°W 40.1'

Pine stp 30" N11°E 78.0'
 SCATTERED REMAINS
 OF STUMP N18E

2/7/24 BARBER & ROBERTSON ROAD SURVEY
 By L.W. JOHNSON ITASCA COUNTY
 SAME BTS AS WARNERS 1915 SUBDIVISION.

6/5/1967¹⁹⁷⁰ W. OKERMAN
 RECOVERED 1915 IRON PIPE. SET NEW CORNER
 AND WITNESSED.

E1M 5" S65W 17.9

3 FT STUB SCRIBE OVERGROWN

BALM OF GILGAD 9 N56W 29.9

NOW 11" SCRIBE VISIBLE DIST TO NAIL SW SIDE OF TREE UP 2'

E1M 7" S34E 60.3 FT

DEAD STEEL 7". NAIL ON EAST SIDE OF TREE SCRIBE OVERGROWN

CEAR POST 4" x 4" x 72" SOUTH 1.5 FT DIST TO NORTH FACE

10/1/91 P. MAIN. Fd 2" GALVANIZED STEEL PIPE
 WITH 2 1/2" BRASS CAP UP 1.6 FT. 1 1/2" IRON PIPE
 IS ALONG S FdE AND UP 2". CAP MARKED T57N R25W
 ALSO Fd CEDAR POST WEST 767 FT TO NAIL

SW 1/4 + SE
 1970
 RLS NO. 6807

13 J-25

Section Corner 12-13, 7 & 18
From the Notes of Itasca County
Corner perpetuation record

Set 3/4" Iron pipe in road
from which bears

1925 N. Pine 16" S5W 51.25'

(Now N Pine 18" S11W 51.25')

1925 N. Pine 18" N85W 84.10

(Now N. Pine 20" N24W 84.10)

1954 W. Pine 16" S25W 45.00'

(Now W Pine S30W 45.00')

6/24/81 Ronald Olsen
R9-7150-4 by Olsen

14 J-23

1/4 corner section 12 and 13

from the Notes of Itasca County.
corner perpetuation record.

set County Monument

from which bears

1923 N. Pine 22" N15W 75.20'

(Now N. Pine 24" N10W 75.20')

1973 N. Pine 4" N17W 40.23'

(Now N. Pine 7" N12W 40.23')

N. Pine 12" S88W 68.97'

(Now N. Pine 14" N86W 68.97')

I set a steel post 8' long East 3.2'

with signs 54-2 & 54-9

6/24/81 Ronald Olsen
RP-7150-1 by Olsen

Maple 10" N19W
Maple 10" N19W
Maple 7" S74W

15 N-17

Section Corner sections 14, 15, 22 & 23

From the Notes of Itasca County.
Corner perpetuation record 1/30/40

Set a County Monument
from which bears (Monument in place)

1923 N. Pine 6" N50E 19.30'

(Now 16" N Pine N62E 19.30')

1923 N. Pine 4" N81E 1.2'

(Now N. Pine Stump East 1.2')

1923 N. Pine 5" S10E 7.10

(Now N. Pine 14" S2E 7.10')

1970 N. Pine 24" S60E 16.30'

(Now N. Pine 17" S26E 16.30')

I set steel post 8' long East 3.7'

w/signs 54-2 & 54-9

6/19/81 Ronald Olson
RP-9155-4

Orig. Govt. Survey

Maple, 10", S20°E, 81ks (5.28')

Maple, 10", N35°W, 151ks (9.90')

Maple, 7", S74°W, 201ks (13.20')

CERTIFICATE FILED

Birch, 17", N52°E, 471ks (32.34')

1/4 Corner sections 14 $\frac{1}{2}$ 23

From the Notes of Itasca County
perpetuation record

(County Monument)
set Iron pipe with A/O. Cap.

from which bears

1955 Spruce 4" N88W 21.25'

~~1955~~ (found spruce 9" west 21.25')

1970 Spruce 15" N25W 44.05'

(found spruce 12" N25W 44.05')

2 set steel post 8' Long West 4.1' w/sign 54-2

steel post 8' Long East 4.1' w/sign 54-2/54-9

6/19/81 Ronald Olson
R9-71 50-4

17 N-21

Section Corner section 13, 14, 23 & 24

From the notes of Itasca County
Corner perpetuation records

Set County Monument

(found Monument in place)

from which bears

1923 R. Pine S88W 105.30'

(found R. Pine 14" N86W 105.3')

1970 R. Oak 20" N35E 44.27'

(found R. Oak 13" N46E 44.27')

Maple 6" N69E 26.16'

(found Maple 8" N82E 26.16')

Maple 5" S50W 41.73'

(found Maple 5" S62W 41.73')

Maple 8" S4W 20.67'

(found maple 8" S14W (20.67')

Set steel post 8' Long East 4.1' w/sign 54-2

Steel post 8' Long West 4.1' w/sign 54-2 & 54-9

6/19/81 Ronald Olson

18 N-23

1/4 corner sections 138 24

From the notes of Itasca County
Corner perpetuation records.

Set County Monument

from wheel bears

1965 Birch 4" N4W 47.88

(found Birch 9" N4E 47.88')

1973 Maple 10" N31E 60.84

(found maple 11" N40E 60.84)

1973 X Rock 3'x2' N35W 46.69

(found X Rock 3'x2' N30W 46.69)

Set a wood post 4"x4" West 5.5' ^{4/31/92}
54-2854-9

6/19/81 Ronald Olsen
R9-7156-4

19 5-13

Section Corner Sections 9, 10, 15 & 16

From the Notes of Itasca County
Corner perpetuation record.

Set County Monument 6/67

from which bears

Birch 5" N 20 W 13.97'

(found Birch stump 5" N 10 W 13.97')

Basswood 8" S 30 W 11.25'

(found Basswood 8" S 36 W 11.25')

Maple 6" S 85 E 13.73'

(found Maple 6" S 26 E 13.73')

Basswood 9" N 77 E 13.12'

(found Basswood 9" S 88 E 13.12')

Set steel post 8' long East 5.5'

w/signs 54-2854-9

6/19/81 Ronald Olson
RR-7150-4

8/81

R. Oak, 11" N 70 E, 26.27'

CERTIFICATE FILED

Orig Govt Survey

Birch, 16", S 73° E, 61ks (3.96')

Fir, 8", S 16° W, 191ks (12.54')

Birch, 16", N 03° W, 181ks (11.88')

Maple, 7", N 42° E, 101ks (6.6')

20 J-15

1/4 corner sections 10 & 15

From the Notes of Itasca County
Corner perpetuation record

Set County Monument
from which bears

Balsam 7" N60E 6.65'

(found Balsam stump N72E 6.65')

Balsam 8" N65W 8.85'

(found balsam 8" N55W 8.85')

To bring this corner to standard
I cut new BT's

Ash 4" S48E 32.47' 1/4S15BT

Balm of lead 8" S78E 23.13' 1/4S15BT

Ash 8" S75W 42.60' 1/4S15BT

Steel post 8' long west 5.5'

w/signs 54-2 & 54-9

6/19/81 Ronald Olson
RR-7150-4

Orig. Govt. Survey

Corner set but no mention of BT's

CERTIFICATE FILED

21 E-25

Section Corner Sections 1, 6, 7 & 12

From the Notes of Itasca County
Corner perpetuation record

Set County Monument

(Found Monument in place)

from which bears

1954	K. Rock	2'x2'	N70W	13.15'	} All cut by logging
1954	Aspen	10"	N30E	8.00'	
1972	Birch	5"	N12W	10.45'	
1972	Birch	5"	S40E	13.88'	
1972	Birch	8"	S63W	12.71'	

To bring this corner to standard I
cut New BT 2

Birch 8" N43W 20.80' S1BT

Birch 6" S10W 18.89' S12BT

Set stake post 8' Long North 8.5'

w/signs 54-2 & 54-9

6/23/91 Ronald Olson
R9-7150-4

CERTIFICATE FILED

22 C-25

1/4 Corner sections 1 & 6

From the notes of Itasca County.
Corner perpetuation record.

Set County Monument

from which bears

* W. Pine 24" N 2 E 139.98'

(found W. Pine 23" N 8 E 139.98')

Pipe 1" x 36" East 33.0'

(found pipe 1" x 36" S 84 E 33.0')

To bring this Corner to Standard I
Cut New BTS

W. Oak 6" S 30 W 31.96' 1/4 51 BT

Birch 5" S 78 E 21.45' 1/4 56 BT

set steel post 8' long South 6.4'

with signs 54-2 & 54-9

set steel post 8' long North 6.5'

with signs 54-2 & 54-9

6/23/81 Ronald Olson
R99150-4

CERTIFICATE FILED

Township Corner Sections 16, 31 & 36

from the notes of Itasca County
Corner perpetuation record

Set County Monument

from which bears

Aspen 8" N6E 17.0'

(found Aspen stub N16E 17.0')

Balsam 7" S70W 33.05'

(found rotten Balsam stump S80W 33.05' w/sign)

Poplar 8" N30W 20.40'

(found rotten stump N20W 20.4')

Poplar 10" S85E 9.10'

(found rotten stump S75E 9.10')

To bring this corner to standard I

cut new Bts

Maple 6" N65W 11.66' 536 BT

Birch 4" N45E 24.23' 531 BT

Birch 5" S64E 24.29' 56 BT

Spruce 9" S44W 60.76' [†]57N R25W
51 BT

set steel post 8' long w/s 7.1'

w/signs 54-2554-9

set steel post 8' long south 6.5'

w/signs 54-2554-9

6/23/81
Ronald O. Lane

24 A-23

1/4 Corner sections 1 & 36

From the notes of Itasca County
Corner perpetuation record.

Set County Monument

from which bears

Spruce 9" N45E 13.40'

(found spruce stump N55E 13.40' w/scribe)

Spruce 9" S70E 23.35'

(found spruce stump S60E 23.35' w/scribe)

To bring this corner to standard I cut
new BTS

W. Pine 6" N22W 41.40' 75E N R25W

W. Spruce 9" N65E 66.99' 536 BT

W. Pine 9" N88E 75.60' "

Set steel post 8' long West 4.4' w/sign 54-2954-9

Set steel post 8' long East 7.1' w/sign 54-2954-9

6/23/81 Ronald Olson

29-7150-4

25 A-21

Section Corner Sections 1, 2, 3 5 & 34

From the notes of Itasca County
Corner perpetuation record

Set County Monument

From which bears

1954 Tam 8" S70W 27.30'

1954 Tam 9" N50W 26.00'

1954 Tam 8" S85E 40.20'

1972 Tam 7" S30W 18.60'

from R-7,50-4 by Suddendorf 1981
found monument in place. Also found

Tam. 12" N40°W 26.00'

Tam. 8" S75°E 40.20'

Tam. 8" S20°W 18.60'

Entered this book 9/14/81 MCG

26 F-G-25

Witness $\frac{1}{4}$ Corner North Shore Hanson Lake
Sections 7 & 12

From the Notes of Itasca County
Corner perpetuation record

Set County Monument

From which bears

1954 Birch 8" N25E 57.60'

1979 Birch 10" N20E 51.37'

1979 Birch 10" N77E 57.01'

(27) K-5 L-4/5

N 1/2 cor Sec 18 T57N R25W

Meander Corner on east-west
quarter line on West shore of
Bluewater lake.

Jan 1926 Corner established by Jos. Schwartz, Deputy
Itasca County Surveyor, in his
subdivision of section 18. Plat
indicates an iron pipe and:

Poplar	6 in	S 75° W	11.0 ft
Bitch	5 in	S 11° E	21.6 ft
Poplar	4 in	N 70° W	19.2 ft
Poplar	6 in	S 60° E	10.0 ft

March 1957 USFS contracted Sam Benzing in
Itasca County Surveyors office
to survey Gov't Lot 2 of Section
18. drawing shows south line of
Gov't lot 2 marked with paint,
no corner info is given

May 1957 Itasca County Surveyors records
show this corner on a survey
of part of Gov't lot 2, Sec 18.
No corner info given

(27) July 2, 1982 Ken Whitehorn RCS, Tied this corner
into our traverse of Section 18 (see
page 22) and found 1 inch iron pipe
on shore of Bluewater lake. No BTs
in evidence.

KL-5 T57N R~~27~~²⁵W KL-13

MC #34 Sec 17 & 18 M.C. N. shore of
North Shore Bluewater Lake Wabana Lake

Orig. Govt. Survey

Cedar, 10", N16°E, 361ks (23.76')

Aspen, 11", N09°W, 321ks (21.12')

7/14/54 corner found

Set a 3 sided pin, no BT's

(29)

LM-5 T57N R25W N-15/16

MC² 33 Sec 17E18 M.C. on E. shore

North Side of Point of Wabana Lake

Orig. Govt. Survey

Cedar, 5", S80°E, 121ks (7.92')

1/31/40 corner found

W. Birch, 6", N18°E, 51ks (33.66')

W. Spruce, 10", S49°E, 126.1ks (83.16')

CERTIFICATE FILED

(29)

MN-5

T57W R25W N-16/17

MC# 32. Sec 17418 MC on Wabana Lake
South side of Point E. shore of bay between

Sec 15+22

Orig. Govt. Survey

Cedar, 9", N71°E, 101ks (6.6')

Cedar, 10", S55°E, 151ks (9.9')

1/30/40

Dry Cedar, 6", N75°E, 81ks

31

N-5 1/2 T57N R25W E 1/6 15422

MC#37 Sec 17E20 N-16

East shore Bluewater Lake

11/31/40

Cedar, 12", N36°E, 64 lbs (42.24')

Cedar, 8", N18°W, 114 lbs (75.24')

1/20/41

Cedar, 6", N75°E, 7 lbs

32

(32)

N^{or} 4/5 T57N R25W 1/4 Sec 14+15

MC # 31 Sec 18+19 L-17

West shore Bluewater Lake

Orig. Govt. Survey

Birch, 14", S08°W, ?

Pine, 10", N29°E, ?

11/27

"X" rock, 12", S73°W, 6.75'

5/67

Birch, 4", S20°E, 9.60'

8/81

Maple, 9", N78°W, 47.82'

Birch, 10", N77°E, 7.24'

CERTIFICATE FILED

(32)

(23) T57N R25W N $\frac{1}{2}$ Sec 15+16 K-13

9/81

Birch, 8", S20°W, 21.40'

W. Pine, 4", N42°W, 16.40'

Balsam, 7", S53°E, 29.08'

CERTIFICATE FILED

(33)

T57N R25W Sec 10, 11, 14, & 15 J-17

Orig. Govt. Survey

Pine , 15" , N65°W , 151ks (9.9')

Birch , 14" , N77°E , 271ks (17.82')

5/67

Co. Mon. , West , 33.00'

1" iron , S65°E , 38.20'

1" iron , N50°E , 38.50'

1" iron , N70°W , 38.50'

1" iron , S50°W , 41.50'

8/81

Birch , 12" , N48°E , 41.51'

Birch , 9" , S55°E , 54.76'

Maple , 8" , S80°W , 64.58'

Rappel , 12" , S44°E , 52.60'

35

T57N R25W 1/4 Sec 9-10 G-13

Orig. Govt. Survey

Pine , 12" , S17°E , 44.1ks (29.04')

Fir , 10" , S70°W , 25.1ks (16.50)

6/67

Oak , 4" , N38°E , 8.72'

Ash , 6" , S65°E , 29.43'

8/81

Ash , 7" , N24°W , 24.11'

Ash , 6" , N62°E , 34.15'

Cedar , 16" , S05°W , 59.44'

36

(36) T57N R25W Sec 3,4,9,10 E-13

Orig. Gout. survey

Maple, 12", S59°W, 171ks (4.22')

Maple, 6", N56°W, 131ks (6.58')

Maple, 5", N36°E, 221ks (14.52')

Maple, 18", S70°E, 101ks (6.60')

5/68

Maple, 10", N82°E, 7.30'

Basswood, 12", S45°W, 13.75'

Basswood, 10", N33°W, 39.60'

Maple, 12", S56°W, 25.77'

8/81

Maple, 6", N65°W, 17.83'

Ironwood, 6", N17°E, 21.67'

CERTIFICATE FILED

(36)

(37) T57N R25W $\frac{1}{4}$ Sec. 3+10 E-15

Orig. Govt. Survey

Set post - no BT's

5/68

Balsam, 12" , N80°W, 22.43'

Balsam, 14" , N02°E, 13.38' (tag)

CERTIFICATE FILED

(37)

(38) T57N R25W Sec 2, 3, 10, 11 E-17

Orig. Govt. Survey

Birch, 10", N72°W, 181ks (11.88')

M. Pine, 14", N40°E, 181ks (11.88')

W. Pine, 14", S53°E, 121ks (7.92')

W. Pine, 12", S40°W, 241ks (15.84')

5/67

Aspen, 6", N80°W, 3.20'

Aspen, 8", S10°W, 17.64'

Aspen, 10", N45°E, 68.33'

8/81

"x" rock, 1½' x 2', N80°E, 6.57'

"x" rock, 3' x 3', N25°W, 14.46'

Balsam, 5", S20°E, 21.44'

CERTIFICATE FILED

(38)

L-9

(38)

QUARTER CORNER SEC 16-17

1872 BUTLER

SET WOOD POST

R PINE 20 N30E 24/KS

BIRCH 10 S82W NO DEST

OCT 1989 R. MAIN M. HAYES

CHAINED SOUTH GOVT DISTANCE
FROM THE SECTION CORNER OF 8-9-16-17.
THERE ARE A LOT OF PINE STUMPS BUT
WE FOUND NO CONCLUSIVE EVIDENCE
OF ORIGINAL BT.

(39)

[Faint mirrored handwriting from the reverse side of the page, including words like "SECTION CORNER", "DISTANCE", "PINE STUMPS", and "EVIDENCE".]

(40) HJ-6 SMC WEST 1/2 TH LINE NORTH SHORE
BLUEWATER LAKE

1915 PL WARNER PLAT OF SECTION 8 SUBDIVISION
SET IRON PIPE AND WITNESSED

CEGAR STP 18 N20W 1.8

NONE Fd

PINE STP 30 N30W 23.9

NONE Fd

2/7/1924 LW JOHNSON ITASCA CO, BARKER &
ROBERTSON ROAD SURVEY

Fd CORNER WITNESSED WITH SAME BTS AS WARNER

1957

ITASCA CO

BERCH 8" 573W 23.64

BERCH 10" N52E 12.40

1970 W. OKERMAN

RECOVERED COUNTY IRON PIPE AND BTS. SET
NEW MONUMENT.

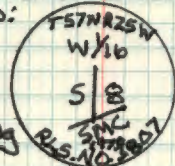
BERCH 8 573W 23.6 TONAL

BERCH 10 N52E 12.4 TONAL

CEGAR POST 4"X4"X72" NORTH 6.1 FT. TO SOUTH FACE OF POST

(40) 10/1/91 R. MAIN

Fd CONCRETE MONUMENT 5" DIAMETER WITH
2 1/2" BRASS CAP 4P 1.8 FT. 3/4" IRON PIPE ON
NORTH SIDE OF NEW MONUMENT AND UP 4".
MONUMENT STAMPED:



CO BTS/W/TRUE BEARING

BERCH 11" 574W 23.6 TONAL SCREEN OVERGROWN

BERCH 11" N60E 12.4 TONAL SCREEN OVERGROWN

CEGAR POST 4"X4"X72" NORTH 6.1 FT TO SOUTH FACE OF POST.

MONUMENT ± 25 FT NORTH OF BLUEWATER LAKE ± 50 FT
SOUTH OF CO RD # 335.

(44)

CENTER NORTH ONE SEVENTEETH SECTION 8

(44)

5/6 P3

Fd Iron pipe up 4 INCHES. Fd 1915 PLUMBER STOP
WITH SCRIBE VISIBLE S50°E 31.0 FT. Fd ASPEN
STUB ± 3 FT S64°W 210.5 FT.

WITNESSED By:

COUNTY BERCH 12" S3°E 20.62 7524 MCO 1/6 258 BT

MAPLE 9" S82°E 22.55 FT 7524

CERTIFICATE FILED

(42)

(42) QUARTER CORNER BET. SEC'S, 6431
ORIG. GOV'T. SURVEY 1872
SET WOOD POST

MAPLE 8 S35W 19 LKS. = 12.54'

NO OTHER

7/6/73

Full Exam of Sec. 14 & 15, T. 42 N., R. 105 W., S. 1

with special reference to Sec. 14 & 15, T. 42 N., R. 105 W., S. 1

found a wood post in Sec. 14, T. 42 N., R. 105 W., S. 1

at the corner of Sec. 14 & 15, T. 42 N., R. 105 W., S. 1

which is the quarter corner between Sec. 14 & 15, T. 42 N., R. 105 W., S. 1

and the quarter corner between Sec. 14 & 15, T. 42 N., R. 105 W., S. 1

and the quarter corner between Sec. 14 & 15, T. 42 N., R. 105 W., S. 1

Maple 8 S35W 19 LKS. = 12.54'

(B) MEANDER CORNER BET. SEC'S. 6+31

WEST SHORE OF TROUT LAKE

ORIG. GOV'T. SURVEY 1872

SET WOOD POST

CEDAR 5 N29W 17 LKS = 11.22'

BIRCH 10 S77W 47 LKS = 31.02'

CERTIFICATE FILED (13)

44

QUARTER CORNER BET. SECS. 10+11

ORIG. GOV'T. SURVEY 1872

SET WOOD POST

BIRCH 12 N10E —

BIRCH 15 S27W —

CERTIFICATE FILED

44

45 MEANDER CORNER BET. SEC'S. 15+22

ORIG. GOV'T. SURVEY 1872

SET WOOD POST.

TAM. 6 N15W 14 Lks. = 9.24'

BIRCH 8 S28W 12 Lks. = 7.92'

CERTIFICATE FILED 45

(46) QUARTER CORNER BET. SEC'S. 21422

ORIG. GOV'T. SURVEY 1872

SET WOOD POST

BIRCH 12 N53E 7 LKS. = 4.62'

FIR 7 S45W 23 LKS. = 15.18'

(46)

SOUTH $\frac{1}{4}$ 1/40 BET SEC 12-7

11-2-2016 R. MAIN A. SKATTUM

SET 3FT X 2" GALVANIZED STEEL PIPE
WITH 3" BRASS CAP MID POINT ON
LINE BETWEEN SEC CORNER ¹²¹⁷ 1318 AND
 $\frac{1}{4}$ 1217. MONUMENT STAMPED

T57N

S $\frac{3}{16}$

R25WS12 | S7R24M

EA16

USFS

8 FT STEEL SIGN POSTS SOUTH 3.02' AND
WEST 1.92' DIST TO NEAR EDGE OF POST
LINE TO STD SOUTH.

GPS SURVEY GRADE ITASCA CO NORTH COORD
N = 74956.786 E = 570040.937

47

North 1/2 1st Sec 12-7

11-2206 F. M. A. Smith
Set 30' x 2' advanced level
with 3" brass cap measuring
line between sec corner 1018 and
1/2 1/2' monument 7574

2005/12/17
518
495

Set 30' x 2' advanced level
with 3" brass cap measuring
line between sec corner 1018 and
1/2 1/2' monument 7574
North 1/2 1st Sec 12-7

END OF
BOOK