

U. S. Department of Agriculture
FOREST SERVICE

213

Chippewa Acq. NATIONAL FOREST

CORNERS OF THE PUBLIC SURVEY

T. 150 N R. 28 W 5th Mer.
Section Corner common to Sections

33, 34, 4, and 3

Corner consists of a wood post (not) in place
State condition good

Dimensions above ground 30 inches

Sketch grooves, letters, figures, or notches, on proper face or edge.

CARDINAL POSITION

DIAGONAL POSITION

N	W	S	E

T150N	T149N		
R28W	R28W	8-3	8-34
S33			
NW	SW	SE	NE

Mound of is located

Pits are located

Sketch markings of Bearing Trees (or Rocks) in proper box and fill blanks below, giving bearings from Corner to Trees and Distances in Links.

T150N R28W S33	T149N R28W		
B. T.	B. T.		

Species Birch Birch

Diameter 16" 14"

Bearing N57.30' W. S64' W

Distance 72 11. 15 links

Do you believe this to be a genuine Land Office Corner? No

If not, why? corner too recent for a G.L.O. corner.

Harrison Adams
(Signature)

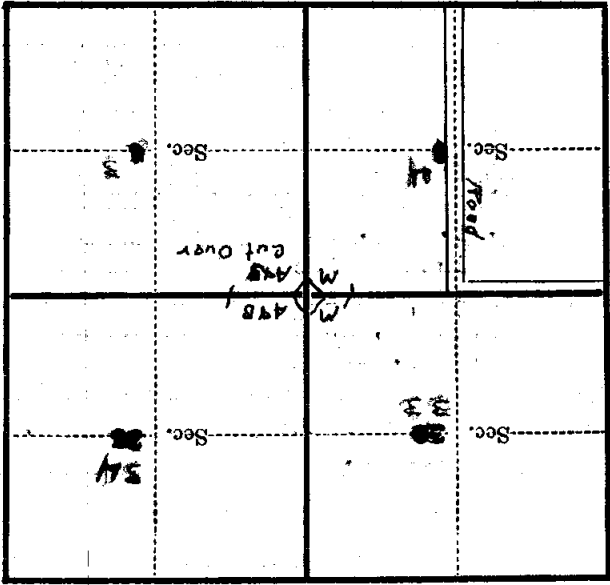
12/7/34
(Date)

Asst. Leader
(Title)

2-13

Corner again.

Give any further facts which will aid in finding this
 chains distant.
 from which this Corner bears
 side of
 tree..... inches diameter, on the
 Metal Location Poster is on a



(Make sketch of topography near Corner)

U. S. Department of Agriculture
FOREST SERVICE

Chippewa Agg. NATIONAL FOREST
CORNERS OF THE PUBLIC SURVEY

T. 150 N. R. 28 W. 5th Mer.

section Corner common to Sections
33, 34, 4, and 3

Corner consists of a wood post ~~not~~ in place
State condition Good

Dimensions above ground 30 inches
Sketch grooves, letters, figures, or notches, on proper face or edge.
CARDINAL POSITION DIAGONAL POSITION

N	W	S	E

T150	T149		
R28	R28		
S33	S4	S3	S34
NW	SW	SE	NE

Mound of is located

Pits are located

Sketch markings of Bearing Trees (or Rocks) in proper box and fill blanks below, giving bearings from Corner to Trees and Distances in Links.

T150N R28W S33	T149N R28W S--		

Species Birch Birch
Diameter 16" 14"
Bearing N57°30'W S64°W
Distance 72 li. 15 links

Do you believe this to be a genuine Land Office Corner? NO
If not, why? corner too recent for a G.
L. O. corner.

Harrison Adams
(Signature)

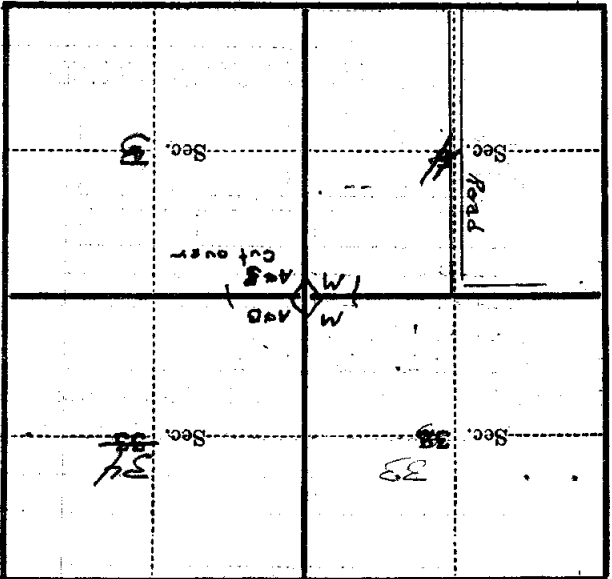
12/7/34 (Date) Asst. Leader (Title)



.....
.....
.....
.....
.....
.....
.....
.....
.....
.....

Corner again.

Give any further facts which will aid in finding this
..... chains distant
from which this Corner bears
side of
tree inches diameter, on the
Metal Location Poster is on a



(Make sketch of topography near Corner)