

U. S. Department of Agriculture
FOREST SERVICE

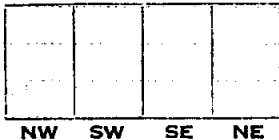
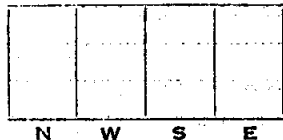
Chippewa NATIONAL FOREST
CORNERS OF THE PUBLIC SURVEY

T. 150N R. 28W 5th Mer.

Section Corner common to Sections
29, 28, 32, and 33

Corner consists of a _____ (not) in place
State condition _____

Dimensions above ground _____ inches
Sketch grooves, letters, figures, or notches, on proper face or edge.
CARDINAL POSITION DIAGONAL POSITION



Mound of _____ is located _____

Pits are located _____

Sketch markings of Bearing Trees (or Rocks) in proper box and fill blanks below, giving bearings from Corner to Trees and Distances in Links.

T-150 R-28 S-32			
B.T			

Species Aspen
Diameter 9"
Bearing S. 85° E
Distance 33 links

Do you believe this to be a genuine Land Office Corner? Yes
If not, why? _____

Harrison Adams
(Signature)

Asst. Leader
(Title)

(Date)

Corner again.

Give any further facts which will aid in finding this

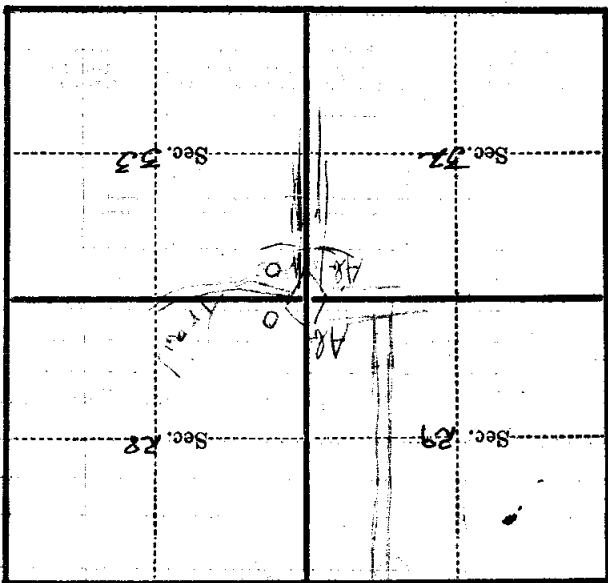
~~107~~ chains distant.

from which this Corner bears $S 69\frac{1}{2}^{\circ} W$

side of $Asp. Tr. 2$

tree $9''$ inches diameter, on the

Metal Location Poster is on a $Asp. Tr. 1$ NE



(Make sketch of topography near Corner)

T. 150 N. R. 28 W. STA Mer.

U. S. Department of Agriculture
FOREST SERVICE

V9
Wells

Chippewa ~~Acc.~~ NATIONAL FOREST

CORNERS OF THE PUBLIC SURVEY

T. 150N R. 28W 5th Mer.

Section Corner common to Sections
29, 28, 32, and 33

Corner consists of a (not) in place
State condition

Dimensions above ground inches
Sketch grooves, letters, figures, or notches, on proper face or edge.
CARDINAL POSITION DIAGONAL POSITION

N	W	S	E

NW	SW	SE	NE

Mound of is located

Pits are located

Sketch markings of Bearing Trees (or Rocks) in proper box and fill blanks below, giving bearings from Corner to Trees and Distances in Links.

T-150N			
R-28W			
S-32			
B. T.			

Species Aspen

Diameter 2"

Bearing S 85° E

Distance 33 Links

Do you believe this to be a genuine Land Office Corner? Yes

If not, why?

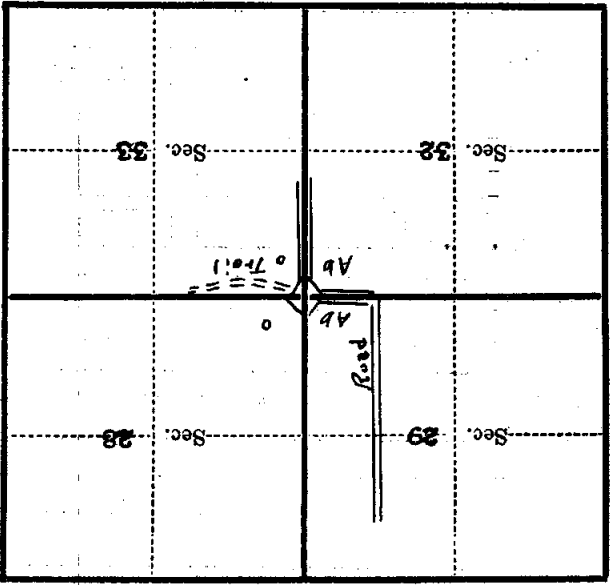
Harrison Adams
(Signature)

12/6/34
(Date)

Asst. Leader
(Title)

V-9

Metal Location Poster is on a Aspen tree 8 inches diameter, on the N. W. side of ... from which this Corner bears S 69° 30' W ... chains distant. Give any further facts which will aid in finding this Corner again.



(Make sketch of topography near Corner)