

U. S. Department of Agriculture

FOREST SERVICE

P

Chippewa NATIONAL FOREST J-21

CORNERS OF THE PUBLIC SURVEY

T. 150 R. 27 S. Mer.

Sec. Corner common to Sections

11, 12, 13, and 14

Corner consists of a post (not) in place

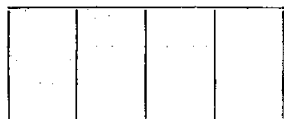
State condition good

Dimensions above ground 30 inches

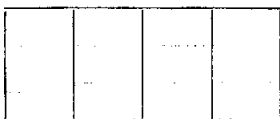
Sketch grooves, letters, figures, or notches, on proper face or edge.

CARDINAL POSITION

DIAGONAL POSITION



N W S E



NW SW SE NE

Mound of is located

Pits are located

Sketch markings of Bearing Trees (or Rocks) in proper box and fill blanks below, giving bearings from Corner to Trees and Distances in Links.



Species

Diameter

Bearing

Distance

Do you believe this to be a genuine Land Office Corner? Yes

If not, why?

H. Johnson

(Signature)

Surveyor

(Title)

1-10-34

(Date)

J-21

W Rail is 82 LKS. East  
Post is 25" North.

Corner again.

Give any further facts which will aid in finding this

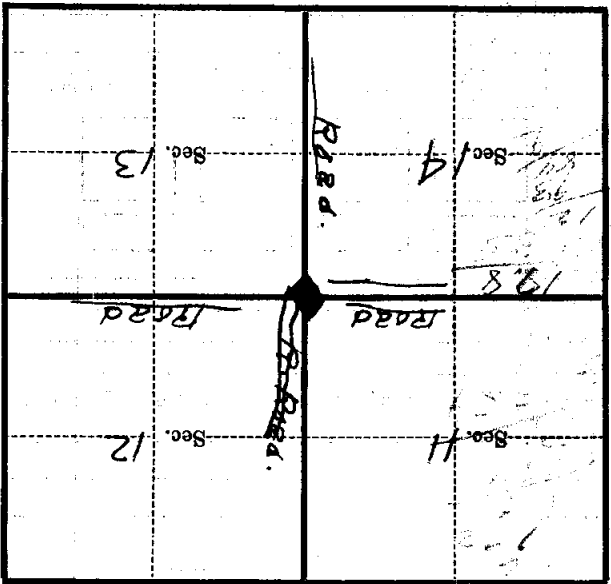
36 LKS ~~from~~ distant.

From which this Corner bears S 40° W.

side of Road

tree 8 inches diameter, on the North

Metal Location Poster is on a Tel. Post



(Make sketch of topography near Corner)

T. 150 R. 27 S. Mer. 121