

U. S. Department of Agriculture  
FOREST SERVICE

525

posted

Chippewa NATIONAL FOREST

CORNERS OF THE PUBLIC SURVEY

T. 150 R. 26 Mer.

Section Corner common to Sections  
7, 18, 12, and 13

Corner consists of a Post (not) in place  
State condition Set on Road Rightway

Dimensions above ground 3 ft inches

Sketch grooves, letters, figures, or notches, on proper face or edge.

CARDINAL POSITION

DIAGONAL POSITION

--	--	--	--

12	13	18	7

N W S E

NW SW SE NE

Mound of \_\_\_\_\_ is located \_\_\_\_\_

Pits are located \_\_\_\_\_

Sketch markings of Bearing Trees (or Rocks) in proper box and fill blanks below, giving bearings from Corner to Trees and Distances in Links.

S 7			
BT	BT		

Species ELM ELM

Diameter 7" 9"

Bearing N10E N53E

Distance 10.4 5.0

Do you believe this to be a genuine Land Office Corner? Yes

If not, why? \_\_\_\_\_

Gordon Sherman

(Signature)

JAN 11 - 34

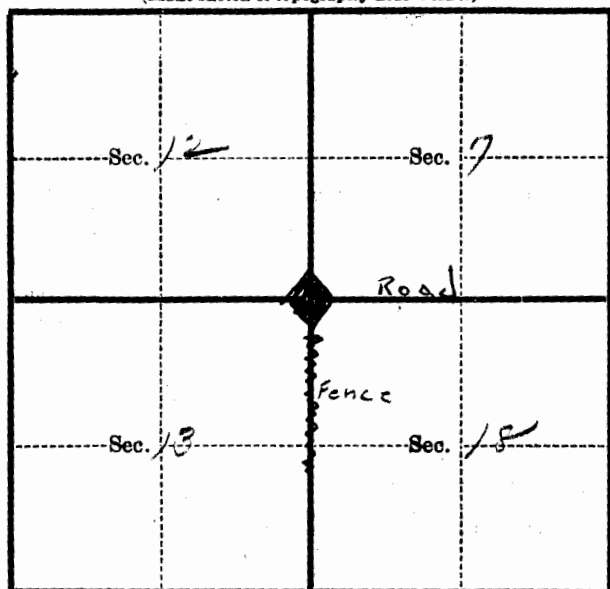
(Date)

Engineer

(Title)

T. 156 R. 26 Mer.

(Make sketch of topography near Corner)



Metal Location Poster is on a Tel. Post  
~~to~~ 1.0 inches diameter, on the North  
side of Road + Corner  
from which this Corner bears  
706. chains distant.

Give any further facts which will aid in finding this  
Corner again.