

Form 874-9--Revised May, 1918

U. S. Department of Agriculture

FOREST SERVICE

89  
Posted

Chippewa NATIONAL FOREST

CORNERS OF THE PUBLIC SURVEY

T. 150 R. 26 5 Mer.

Section Corner common to Sections  
20, 21, 28, and 29

Corner consists of a Cedar post (not) in place  
State condition Good

Dimensions above ground 36 inches  
Sketch grooves, letters, figures, or notches, on proper face or edge.

N	W	S	E

20	21	28	29
NW	SW	SE	NE

Mound of \_\_\_\_\_ is located \_\_\_\_\_

Pits are located \_\_\_\_\_

Sketch markings of Bearing Trees (or Rocks) in proper box and fill blanks below, giving bearings from Corner to Trees and Distances in Links.

Sec 29			
B. 17			

Species Cedar

Diameter 10.5

Bearing S 25° W

Distance 25 ft.

Do you believe this to be a genuine Land Office Corner? Yes

If not, why? \_\_\_\_\_

Mark A. Guller

(Signature)

Field Notes

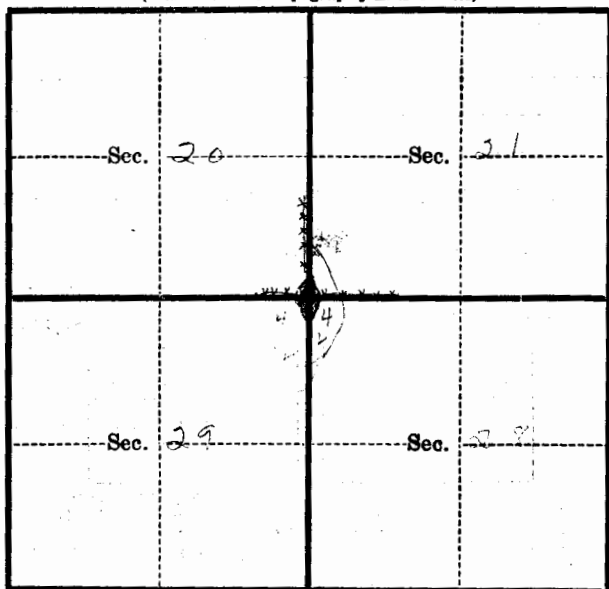
(Title)

9-20-34

(Date)

T. 150 R. 26 S. 5 Mer.

(Make sketch of topography near Corner)



Metal Location Poster is on a 7 c.h.s. West  
tree \_\_\_\_\_ inches diameter, on the \_\_\_\_\_  
side of \_\_\_\_\_  
from which this Corner bears East  
7 chains distant.

Give any further facts which will aid in finding this  
Corner again.

Follow fence from poster  
on Road