

U. S. Department of Agriculture
FOREST SERVICE

525

Posted

Chippewa NATIONAL FOREST

CORNERS OF THE PUBLIC SURVEY

T. 150 R. 26 Mer.

Section 7 Corner common to Sections 7, 12, 12, and 13

Corner consists of a Post (not) in place
State condition Set on Road Rightway

Dimensions above ground 3 ft inches

Sketch grooves, letters, figures, or notches, on proper face or edge.

CARDINAL POSITION

DIAGONAL POSITION

--	--	--	--

12	13	18	7

N W S E

NW SW SE NE

Mound of _____ is located _____

Pits are located _____

Sketch markings of Bearing Trees (or Rocks) in proper box and fill blanks below, giving bearings from Corner to Trees and Distances in Links.

S 7			
BT	BT		

Species ELM ELM

Diameter 7" 9"

Bearing N10E N53E

Distance 108 50

Do you believe this to be a genuine Land Office Corner? Yes

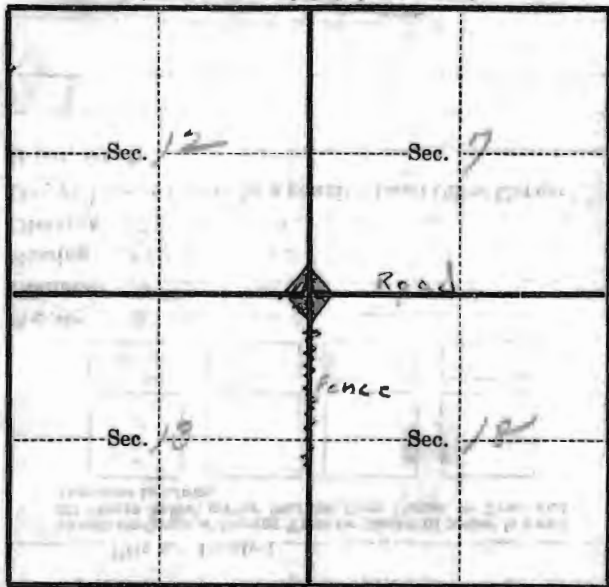
If not, why? _____

Gordon Sherman
(Signature)

Jan 11 1934
(Date)

Engineer
(Title)

(Make sketch of topography near Corner)



Metal Location Poster is on a Tel. Post
~~to~~ 1.0 inches diameter, on the North
 side of Road + Corner
 from which this Corner bears 206
chains distant.

Give any further facts which will aid in finding this
 Corner again.