

U. S. Department of Agriculture
FOREST SERVICE

Posted X21

Chippewa NATIONAL FOREST

CORNERS OF THE PUBLIC SURVEY

T. 799 R. 200 Mer. 5th

1/4 Corner common to Sections 35, and 36

Corner consists of a Timbered post (not) in place
State condition Fair. Shaded on 2 sides

Dimensions above ground 2 1/2" high 3" dia inches
Sketch grooves, letters, figures, or notches, on proper face or edge.

CARDINAL POSITION

DIAGONAL POSITION

	<i>None</i>		
N	W	S	E

	<i>None</i>		
NW	SW	SE	NE

Mound of _____ is located _____

Pits are located _____

Sketch markings of Bearing Trees (or Rocks) in proper box and fill blanks below, giving bearings from Corner to Trees and Distances in Links.

<i>1/4 S.</i>			
<i>B.T.</i>			

Species Timbered

Diameter 3 1/2"

Bearing N 5° W

Distance 11.133

Do you believe this to be a genuine Land Office Corner? No

If not, why? Because no original B.T. although should be close as B.T. is sketched, probably State work

Harriet Rose Jr.

(Signature)

Estimator

(Title)

Feb 23, 1935

(Date)

Prepared the property
 East and west of corner
 to line
 Prepared line running
 N. 85.000° E 15 lbs. East of West

Corner again.

Give any further facts which will aid in finding this

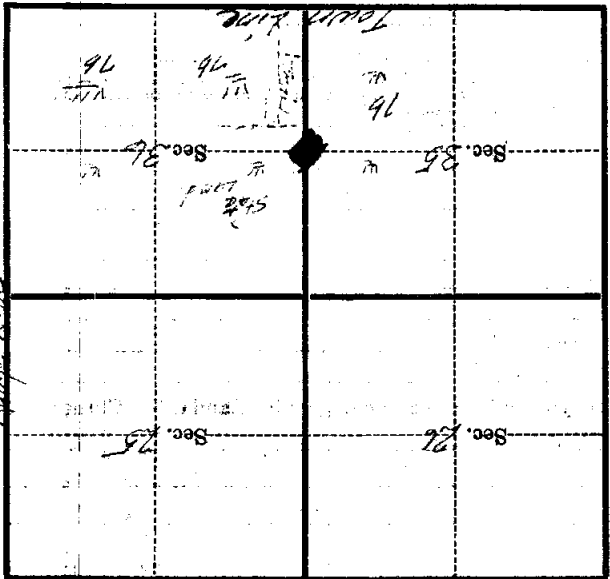
11775 obseas distant.

from which this Corner bears 5.50° E.

side of the tree.

tree 3 1/2 inches diameter, on the S.E.

Metal Location Poster is on B.I. Tam



(Make sketch of topography near Corner)

T. 149 R. 29 W. 8th Mer.