

U. S. Department of Agriculture

FOREST SERVICE

NATIONAL FOREST

CORNERS OF THE PUBLIC SURVEY

T. 49N, R. 23W, 5th Mer.

Corner common to Sections

21, and 22

Corner consists of a Stake (not) in place

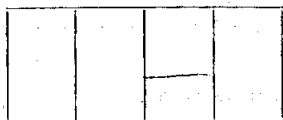
State condition

Dimensions above ground inches

Sketch grooves, letters, figures, or notches, on proper face or edge.

CARDINAL POSITION

DIAGONAL POSITION



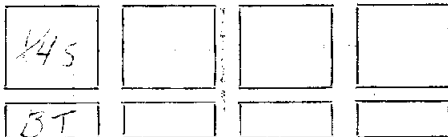
N W S E

NW SW SE NE

Mound of is located

Pits are located

Sketch markings of Bearing Trees (or Rocks) in proper box and fill blanks below, giving bearings from Corner to Trees and Distances in Links.



Species Spruce

Diameter Stump

Bearing South

Distance 110

Do you believe this to be a genuine Land Office Corner? Yes

If not, why?

(Signature)

(Date)

(Title)

T-17

Corner again.

Give any further facts which will aid in finding this chains distant.

110

From which this Corner bears

South

side of

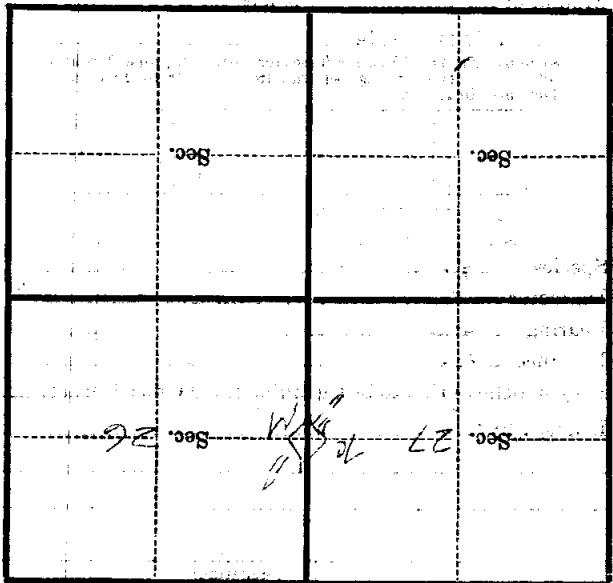
tree

6 inches diameter, on the

South

Metal Location Poster is on a

Apr. 27



(Make sketch of topography near Corner)