

Form 874-9—Revised May, 1918
 U. S. Department of Agriculture
 FOREST SERVICE

Chippewa NATIONAL FOREST

CORNERS OF THE PUBLIC SURVEY

T. 149 R. 28 5 Mer.
Section Corner common to Sections
19, 20, 30, and 29

Corner consists of a _____ (not) in place
 State condition _____

Dimensions above ground _____ inches
 Sketch grooves, letters, figures, or notches, on proper face or edge.

CARDINAL POSITION

DIAGONAL POSITION

N	W	S	E

NW	SW	SE	NE

Mound of _____ is located _____

Pits are located _____

Sketch markings of Bearing Trees (or Rocks) in proper box and fill blanks below, giving bearings from Corner to Trees and Distances in Links.

T-149
R-28
S-19

T-149
R-28
S-20

B.T.

B.T.

Species Birch stump SPRuce

Diameter 18" 20"

Bearing NW NE

Distance _____

Do you believe this to be a genuine Land Office Corner? Yes

If not, why? _____

Karl G. Kobes

(Signature)

1-6-33

(Date)

Estimator

(Title)

8-7394

R-5

Form 874-9—Revised May, 1918
 U. S. Department of Agriculture
 FOREST SERVICE

R-5
posted

Chippewa NATIONAL FOREST

CORNERS OF THE PUBLIC SURVEY

T. 149N R. 28W 5th Mer.
Section Corner common to Sections
19, 20, 29, and 30

Corner consists of a Aspen post (~~Not~~) in place
 State condition Placed by lineal crew.

Dimensions above ground 30 inches
 Sketch grooves, letters, figures, or notches, on proper face or edge.

CARDINAL POSITION

DIAGONAL POSITION

N	W	S	E

S	S	S	S
19	30	29	20
NW	SW	SE	NE

Mound of _____ is located _____

Pits are located _____

Sketch markings of Bearing Trees (or Rocks) in proper box and fill blanks below, giving bearings from Corner to Trees and Distances in Links.

T149N
R-28W
S-20

T149N
R-28W
S-20

T-149N
R-28W
S-19

B.T.

B.T.

Species Spruce Spruce Birch

Diameter 18" Stump Stump

Bearing N82°E N49°E S84°W

Distance 0.71 0.68 0.55 chains

Do you believe this to be a genuine Land Office Corner? Yes

If not, why? _____

Ch. H. ...

(Signature)

5/15/35

(Date)

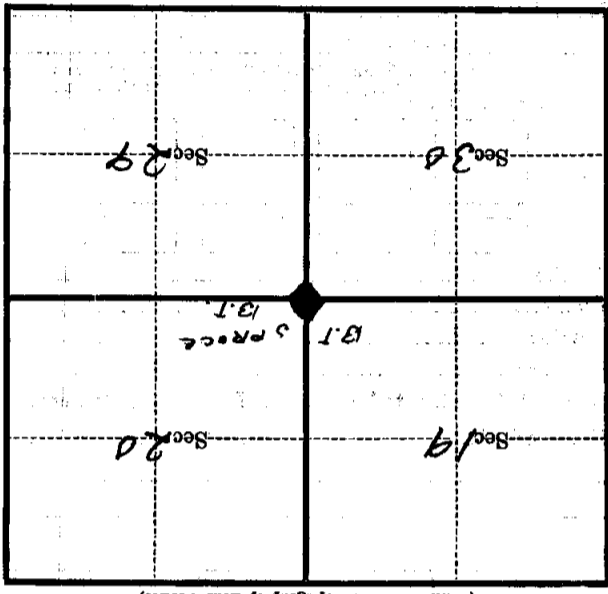
Chief of Party.

(Title)

8-7394

R-5 X

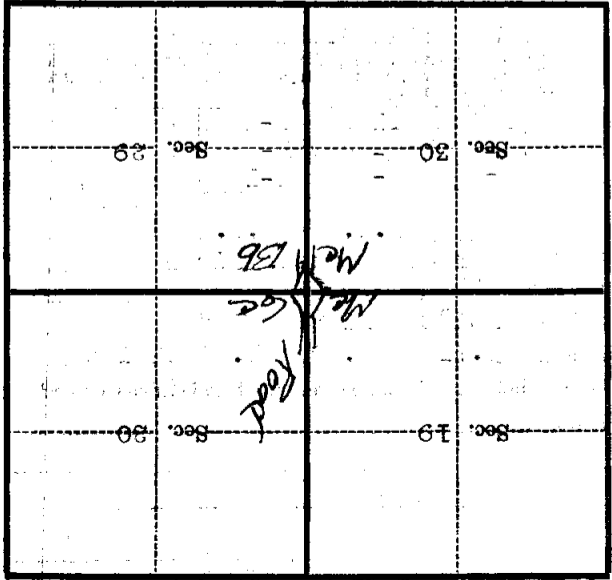
Corner again.
Give any further facts which will aid in finding this
chains distant.
from which this Corner bears *S. W.*
side of *ROAD*
tree $\frac{1}{4}$ inches diameter, on the *F*
Metal Location Poster is on a *BLACK SPRUCE*
ON EAST SIDE OF ROAD NEAR
DITCH AND TELEPHONE LINE
ON COUNTY ROAD 40



(Make sketch of topography near Corner)

T. 149 R. 28
5 Mer.

Corner again.
Give any further facts which will aid in finding this
chains distant.
from which this Corner bears *S. 69° W*
side of *tree*
tree $\frac{1}{4}$ inches diameter, on the *west*
Metal Location Poster is on a *White Spruce*



(Make sketch of topography near Corner)

T. 149N R. 28W
5th Mer.

U. S. Department of Agriculture
FOREST SERVICE

Chipewyan, Guy NATIONAL FOREST

CORNERS OF THE PUBLIC SURVEY

T. 149 N R. 28 W S. 4 P Mer.

Section Corner common to Sections
14, 21, 28, and 30

Corner consists of a ASPEN POST (not) in place
State condition Placed by lineal owner

Dimensions above ground 30" inches

Sketch grooves, letters, figures, or notches, on proper face or edge.

CARDINAL POSITION

DIAGONAL POSITION

N	W	S	E

S19	S30	S21	S20
NW	SW	SE	NE

Mound of _____ is located _____

Pits are located _____

Sketch markings of Bearing Trees (or Rocks) in proper box and fill blanks below, giving bearings from Corner to Trees and Distances in Links.

T1114 R28W S40	T1119 R28W S40	T1119N R28W S11	
	BT	BT	

Species SPRUC SPRUC BIRCH
Diameter 18" SPRUC STRIP
Bearing N82°E N82°E S24°W
Distance 0.71ch 0.68ch 0.55ch

Do you believe this to be a genuine Land Office Corner? Yes

If not, why? _____

5/15/35 (Date)
A. H. [Signature] (Signature)
Chief of Party (Title)
8-7394 R-5

Faint, illegible text on the top half of the page, possibly bleed-through from the reverse side.

Corner again.
Give any further facts which will aid in finding this
chains distant.
from which this Corner bears
side of
tree 18 inches diameter, on the
Metal Location Poster is on a

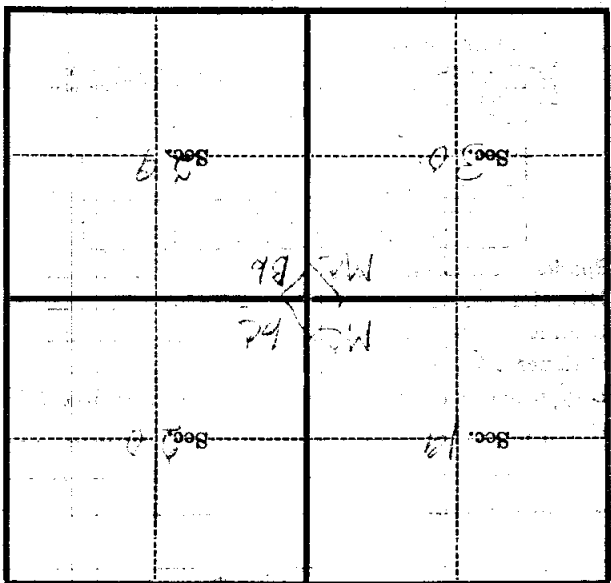
569 W

0.57

TRFE

West

W. SPUR



(Make sketch of topography near Corner)

T. L. M. R. 22 W Mer.