

U. S. Department of Agriculture
FOREST SERVICE

Chippewa NATIONAL FOREST

CORNERS OF THE PUBLIC SURVEY

T. 149N R. 27W 5th Mer.

1/2

Corner common to Sections

11, and 12

Corner consists of a Post (not) in place

State condition 36"

Dimensions above ground _____ inches

Sketch grooves, letters, figures, or notches, on upper face or edge.

CARDINAL POSITION

DIAGONAL POSITION

T-149N R-27W			
S2	S1	S12	

N W S E

NW SW SE NE

Mound of _____ is located _____

Pits are located _____

Sketch markings of Bearing Trees (or Rocks) in proper box and fill blanks below, giving bearings from Corner to Trees and Distances in Links.

T-149N R-27W S-1	
------------------------	--

--

--

BT	
----	--

--

--

Species Aspen

Diameter 16"

Bearing 70° E

Distance _____

Do you believe this to be a genuine Land Office Corner? Yes

If not, why? _____

Hanks
(Signature)

T. F. (Title)

F36

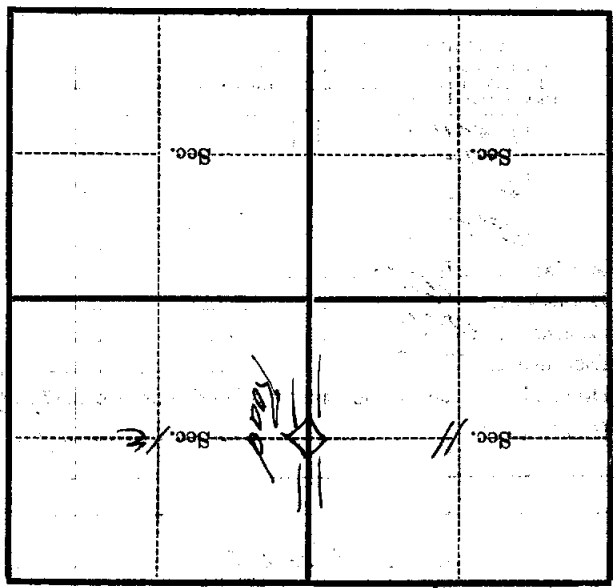
(Title)

4/26/34
(Date)

Corner again.

Give any further facts which will aid in finding this
chains distant.
from which this Corner bears
side of

tree — inches diameter, on the *10h*
Metal Location Poster is on a *Across Road*



(Make sketch of topography near Corner)

U. S. Department of Agriculture
FOREST SERVICE

Chippewa NATIONAL FOREST

CORNERS OF THE PUBLIC SURVEY

T. *149* R. *27* S. *5* P. Mer.

11x Corner common to Sections
11, and *12*

Corner consists of a _____ (not) in place
State condition _____

Dimensions above ground _____ inches

Sketch grooves, letters, figures, or notches, on proper face or edge.

CARDINAL POSITION

DIAGONAL POSITION

N	W	S	E

NW	SW	SE	NE

Mound of _____ is located _____

Pits are located _____

Sketch markings of Bearing Trees (or Rocks) in proper box and fill blanks below, giving bearings from Corner to Trees and Distances in Links.

1/4
S-11

1/4
S-12

B.T

B.T

Species *N. Pine* *N. Pine*

Diameter *8"* *11"*

Bearing *N 61° N* *S 60° E*

Distance *1.2 ft.* *6.5 ft.*

Do you believe this to be a genuine Land Office Corner? *ye*

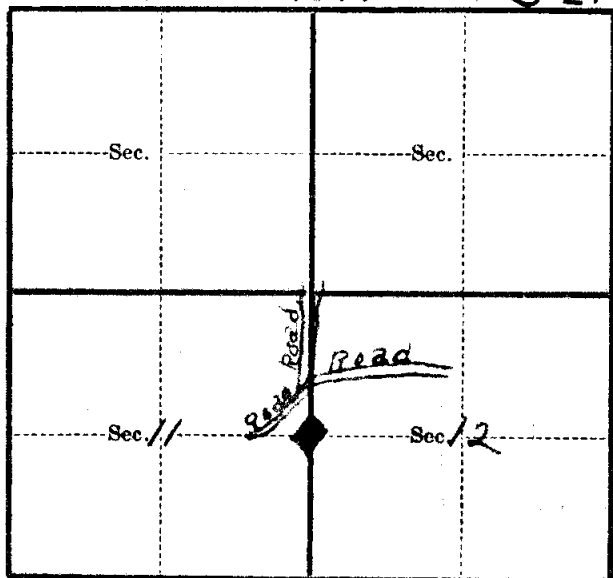
If not, why? _____

Lloyd D. Johnson
(Signature)

1-10-38
(Date)

Sweeney
(Title)

T. 149 R. 27 S-1P Mer.
(Make sketch of topography near Corner) G-21



Metal Location Poster is on a Norway Pine
tree 10 inches diameter, on the South
side of Road
from which this Corner bears N 50° W.
..... chains distant.

Give any further facts which will aid in finding this
Corner again.

Road is 4 chs. North
of cor. 11 and 12

U. S. Department of Agriculture

FOREST SERVICE

Chippewa NATIONAL FOREST

CORNERS OF THE PUBLIC SURVEY

T. 149 R. 27 5 P. Mer.

1/4 Corner common to Sections
 _____, _____, 11, and 12

Corner consists of a _____ (not) in place

State condition _____

Dimensions above ground _____ inches

Sketch grooves, letters, figures, or notches, on proper face or edge.

CARDINAL POSITION

DIAGONAL POSITION

N	W	S	E

NW	SW	SE	NE

Mound of _____ is located _____

Pits are located _____

Sketch markings of Bearing Trees (or Rocks) in proper box and fill blanks below, giving bearings from Corner to Trees and Distances in Links.

<u>1/4</u>	<u>1/4</u>		
<u>S-11</u>	<u>S-12</u>		
<u>B.T</u>	<u>B.T</u>		

Species N. Pine N. Pine

Diameter 8" 11"

Bearing N 61 W S 60 1/2 E

Distance 11.2 ft. 6.5 ft.

Do you believe this to be a genuine Land Office Corner? yes

If not, why? _____

Lloyd H. Johnson

(Signature)

Secretary

1-10-38

(Date)

(Title)

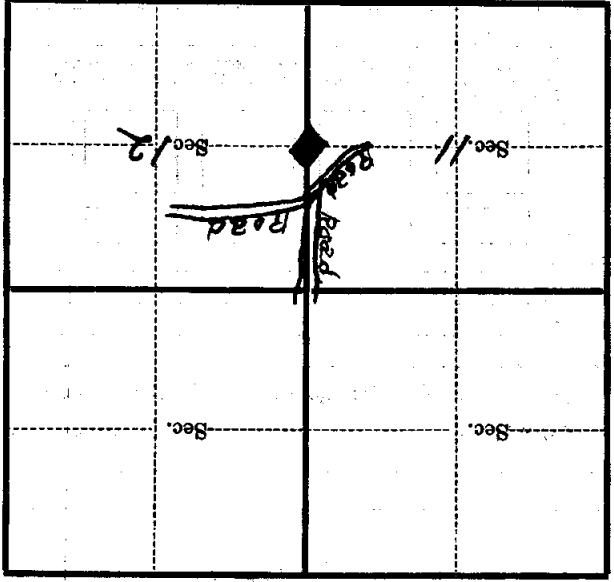
G-21

Corner again.
Road is 4 chs. North
of 1/4 Cor. of 11 and 12

Give any further facts which will aid in finding this
chains distant.

from which this Corner bears
N 60° W

side of Road
tree 10 inches diameter, on the South
Metal Location Poster is on a Norway Pine



(Make sketch of topography near Corner)

T. 149 R. 27 S. 5-P. Mer.

U. S. Department of Agriculture
FOREST SERVICE

G-21

Chippawa NATIONAL FOREST
CORNERS OF THE PUBLIC SURVEY

T. 149 R. 27W 5th Mer.

Corner common to Sections
11, and 12

Corner consists of a (not) in place

State condition

Dimensions above ground inches

Sketch grooves, letters, figures, or notches, on proper face or edge.

CARDINAL POSITION

DIAGONAL POSITION

N	W	S	E

NW	SW	SE	NE

Mound of is located

Pits are located

Sketch markings of Bearing Trees (or Rocks) in proper box and fill blanks below, giving bearings from Corner to Trees and Distances in Links.

T-149 N R-27W S-X

T-149 N R-27W S-12

--

--

--

--

--

--

Species NP NP

Diameter 7" 12"

Bearing 70E

Distance

Do you believe this to be a genuine Land Office Corner?

If not, why?

Hanks

(Signature)

TF

(Title)

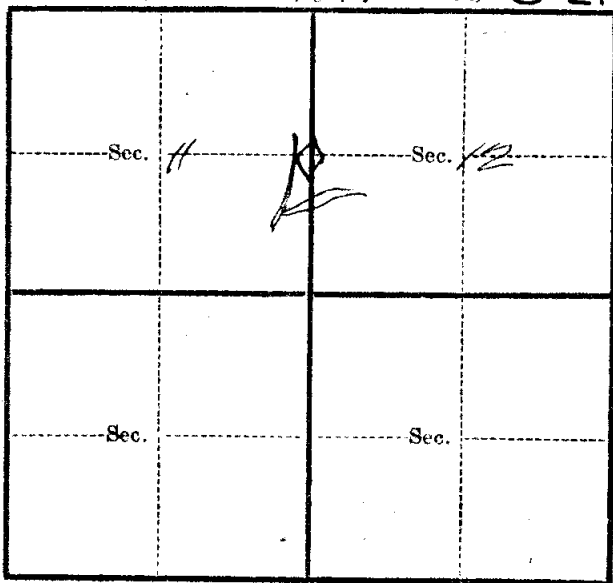
F-36

4/27/34

(Date)

T. 149 R. 27 5th Mer.

(Make sketch of topography near Corner) G-21



Metal Location Poster is on a Tree
~~tree~~ inches diameter, on the 102 512
~~side of~~
from which this Corner bears
..... chains distant.

Give any further facts which will aid in finding this
Corner again.

U. S. Department of Agriculture
FOREST SERVICE

G-21

Chippawa NATIONAL FOREST

CORNERS OF THE PUBLIC SURVEY

T. 149 R. 27W 5th Mer.

4 Corner common to Sections
11, and 12

Corner consists of a _____ (not) in place

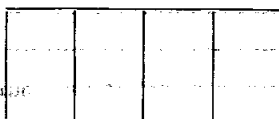
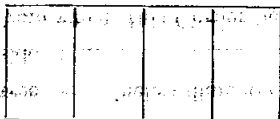
State condition _____

Dimensions above ground _____ inches

Sketch grooves, letters, figures, or notches, on proper face or edge.

CARDINAL POSITION

DIAGONAL POSITION



N W S E

NW SW SE NE

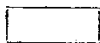
Mound of _____ is located _____

Pits are located _____

Sketch markings of Bearing Trees (or Rocks) in proper box and fill blanks below, giving bearings from Corner to Trees and Distances in Links.

T-149 N
R-27W
S-X

T-149 N
R-27W
S-12



Species NP NP

Diameter 7" 12"

Bearing 70E

Distance _____

Do you believe this to be a genuine Land Office Corner? _____

If not, why? _____

Hanks

(Signature)

TF F-36

(Title)

4/29/34
(Date)

G-21

Corner again.

Give any further facts which will aid in finding this

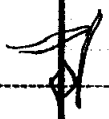
~~chain's distant~~

from which this Corner bears

side of

~~tree~~ inches diameter, on the 10 512

Metal Location Poster is on a tree

	Sec.		Sec.
	Sec. <u>112</u>		Sec. <u>11</u>

(Make sketch of topography near Corner)

T. 149 R. 27 S. 5th Mer.

U. S. Department of Agriculture
FOREST SERVICE

Chippewa NATIONAL FOREST

CORNERS OF THE PUBLIC SURVEY

T. 149N. R. 27W. 5th Mer.

Corner common to Sections

11, and 12

Corner consists of a Post (not) in place

State condition 36"

Dimensions above ground inches

Sketch grooves, letters, figures, or notches, on upper face or edge.

CARDINAL POSITION

DIAGONAL POSITION

--	--	--	--

N. W. S. E.

T-149N R-27W			
52	51	512	

NW SW SE NE

Mound of _____ is located _____

Pits are located _____

Sketch markings of Bearing Trees (or Rocks) in proper box and fill blanks below, giving bearings from Corner to Trees and Distances in Links.

T-149N R-27W 5-1			
BT			

Species AspenDiameter 16"Bearing 100°E

Distance _____

Do you believe this to be a genuine Land Office Corner? Yes

If not, why? _____

Hanks

(Signature)

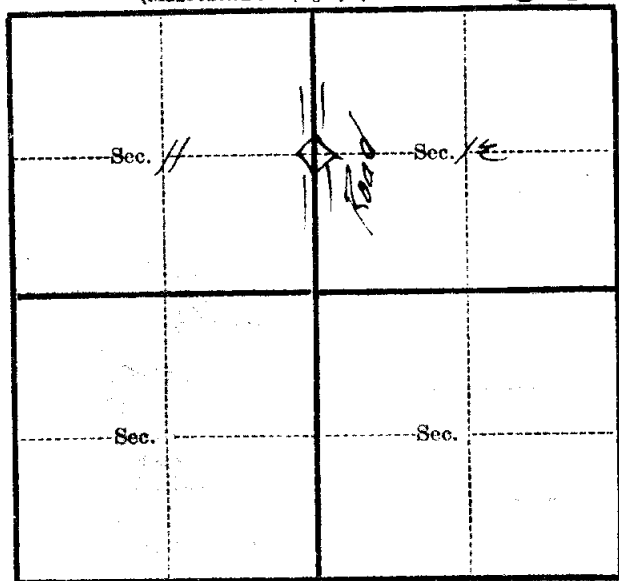
T. F. F. 36

(Title)

4/26/34

(Date)

T. 149 R. 21 5th Mer.
(Make sketch of topography near Corner) 6-21



Metal Location Poster is on a across road
tree inches diameter, on the 1 ch
side of _____
from which this Corner bears _____
_____ chains distant.

Give any further facts which will aid in finding this
Corner again.