

A19

U. S. Department of Agriculture  
FOREST SERVICE

posted

NATIONAL FOREST

CORNERS OF THE PUBLIC SURVEY

T. 150 R. 17 Mer.

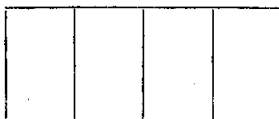
Corner common to Sections  
14, 2, and 35

Corner consists of a \_\_\_\_\_ (not) in place  
State condition \_\_\_\_\_

Dimensions above ground \_\_\_\_\_ inches  
Sketch grooves, letters, figures, or notches, on proper face or edge.

CARDINAL POSITION

DIAGONAL POSITION



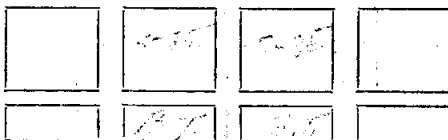
N W S E

NW SW SE NE

Mound of \_\_\_\_\_ is located \_\_\_\_\_

Pits are located \_\_\_\_\_

Sketch markings of Bearing Trees (or Rocks) in proper box and fill blanks below, giving bearings from Corner to Trees and Distances in Links.



Species \_\_\_\_\_  
Diameter \_\_\_\_\_ 10 \_\_\_\_\_  
Bearing \_\_\_\_\_ N64W N36E  
Distance \_\_\_\_\_ 39.6 55.5

Do you believe this to be a genuine Land Office Corner? Yes  
If not, why? \_\_\_\_\_

Floyd W. Johnson  
(Signature)

(Date)

(Title)

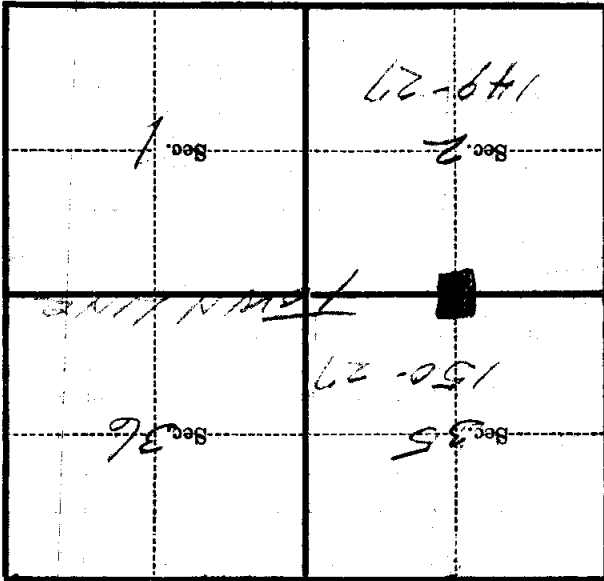
A-19

Corner again:  
 Corner supposed to  
 be in center of road  
 and can be located  
 from bearing road  
 notes!

Give any further facts which will aid in finding this  
 chains distant.

from which this Corner bears 5220 N

Metal Location Poster is on a Fence Post  
 9 inches diameter, on the East  
 side of Road



(Make sketch of topography near Corner)

T. 149 R. 27  
 A-M-B  
 A-B

## U. S. Department of Agriculture

FOREST SERVICE

A-19

Chippewa NATIONAL FOREST

## CORNERS OF THE PUBLIC SURVEY

T. 149 R. 27 5 Mer.

Corner common to Sections  
7, 2, and 35

Corner consists of a \_\_\_\_\_ (not) in place

State condition \_\_\_\_\_

Dimensions above ground \_\_\_\_\_ inches

Sketch grooves, letters, figures, or notches, on proper face or edge.

CARDINAL POSITION

DIAGONAL POSITION

--	--	--	--

N W S E

--	--	--	--

NW SW SE NE

Mound of \_\_\_\_\_ is located \_\_\_\_\_

Pits are located \_\_\_\_\_

Sketch markings of Bearing Trees (or Rocks) in proper box and fill blanks below, giving bearings from Corner to Trees and Distances in Links.

	S-35'	S-35'	
	B.T.	B.T.	

Species J. Pine J. Pine

Diameter 10" 7"

Bearing N64W N36E

Distance 39.6 ft. 55.5 ft.

Do you believe this to be a genuine Land Office Corner? *yes*

If not, why? \_\_\_\_\_

Lloyd M. Johnson

(Signature)

Surveyor

(Title)

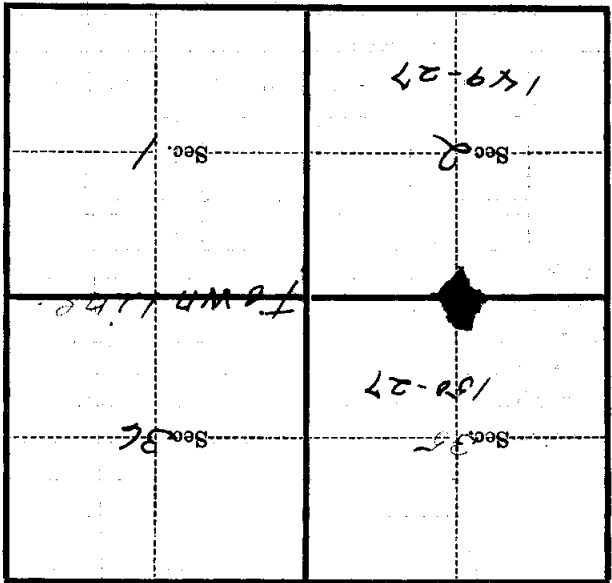
1-10-34

(Date)

A-19

Corner again.  
Corner supposed to  
be in center of road.  
And can be located  
from county road notes.

Give any further facts which will aid in finding this  
chains distant.  
from which this Corner bears S 82° 0' W.  
side of Road.  
tree 9 inches diameter, on the East  
Metal Location Poster is on a Fence Post



(Make sketch of topography near Corner)

T. 149 R. 27 5 Mer.