

Form 874-9—Revised May, 1918
U. S. Department of Agriculture
FOREST SERVICE

Chippewa NATIONAL FOREST

CORNERS OF THE PUBLIC SURVEY

T. 149 R. 27 5 Mer.

Section Corner common to Sections
14, 15, 22, and 23.

Corner consists of a Post (not) in place

State condition

Dimensions above ground ^{HEIGHT} 2 1/2' Dia 3" ^{squared}

Sketch grooves, letters, figures, or notches, on proper face or edge.

CARDINAL POSITION

DIAGONAL POSITION

--	--	--	--

N. W S E

--	--	--	--

NW SW SE NE

Mound of _____ is located _____

Pits are located _____

Sketch markings of Bearing Trees (or Rocks) in proper box and fill blanks below, giving bearings from Corner to Trees and Distances in Links.

S 22	S 23		
B.T	BT		

Species aspens aspen

Diameter 7" 19"

Bearing S.W. S.E.

Distance _____

Do you believe this to be a genuine Land Office Corner? _____

If not, why? _____

Harpin

(Signature)

6-26-38

(Date)

(Title) N-17

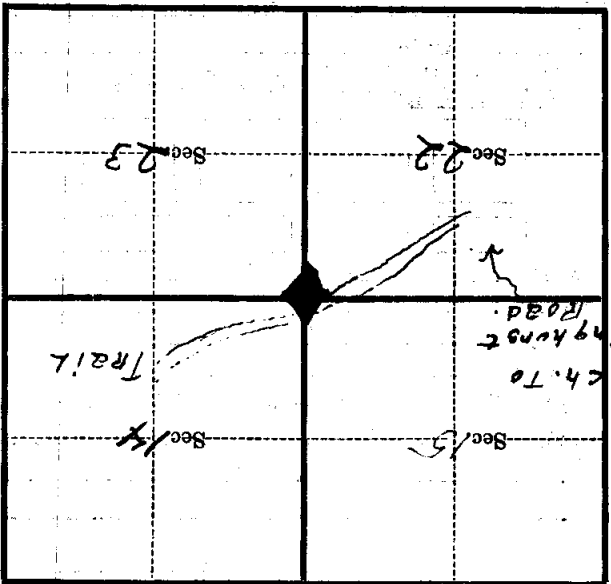
W S-23
Also Iron pipe 1 1/2" dia. 6" high

T149-R27
S-22

Corner again.
Stamps of original B.T.
found Mark (B.T.) Barely
discernable.

Give any further facts which will aid in finding this
chains distant.
from which this Corner bears

side of
tree 3 1/2 inches diameter, on the S-14-S-15
Metal Location Poster is on a 5" ASPEN.



(Make sketch of topography near Corner)

T. 149 R. 27
Mer. N-17

U. S. Department of Agriculture
FOREST SERVICE

Chippewa NATIONAL FOREST

CORNERS OF THE PUBLIC SURVEY

T. 149 R. 27 S. 5 Mer.

Section Corner common to Sections
14, 15, 22, and 23.

Corner consists of a POST (not) in place

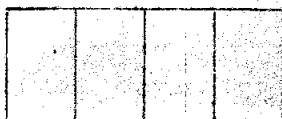
State condition WENT

Dimensions above ground 2 1/2' Dia 3"

Sketch grooves, letters, figures, or notches, on proper face or edge.

CARDINAL POSITION

DIAGONAL POSITION



N . W S E

NW SW SE NE

Mound of _____ is located _____

Pits are located _____

Sketch markings of Bearing Trees (or Rocks) in proper box and fill blanks below, giving bearings from Corner to Trees and Distances in Links.

S
22

S
23

B.T

B.T

Species aspen aspen

Diameter 7" 9"

Bearing S.W. S.E.

Distance _____

Do you believe this to be a genuine Land Office Corner? _____

If not, why? _____

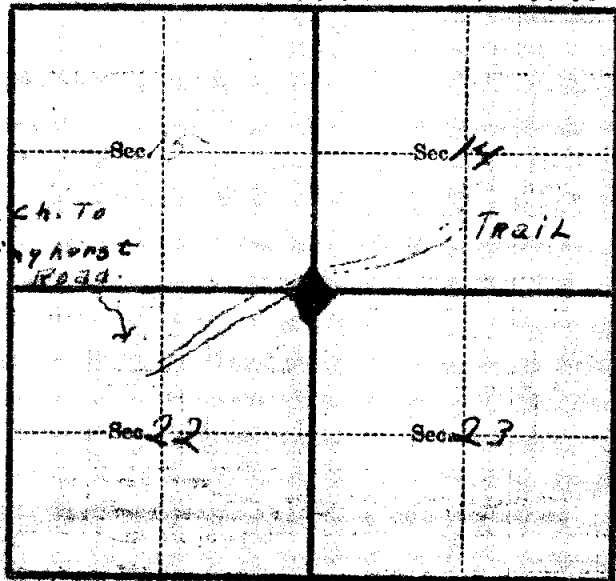
Harken

(Signature)

6-26-34

(Date)

(Title) N-17



Exact Location Poster is on a 5" ASPEN tree 3 1/2 inches diameter, on the S-14-S-15 side of _____ from which this Corner bears _____ chains distant.

Give any further facts which will aid in finding this Corner again.

Stumps of original B.T. found MARK (B.T.) Barely discernable.

T 149-R 27
S-22
W.S-23

Also Iron pipe 1 1/2" dia. 6" high