

Form 874-9—Revised May, 1918  
U. S. Department of Agriculture  
FOREST SERVICE

*Chippewa* NATIONAL FOREST

CORNERS OF THE PUBLIC SURVEY

T. *187* R. *27* *5th* Mer.

*section* Corner common to Sections  
*22, 23, 27, and 26*

Corner consists of a *Aspen post* (not) in place

State condition *offed due west 44 links*

Dimensions above ground *40* inches

Sketch grooves, letters, figures, or notches, on proper face or edge.

CARDINAL POSITION

DIAGONAL POSITION

N	W	S	E

NW	SW	SE	NE

Mound of \_\_\_\_\_ is located \_\_\_\_\_

Pits are located \_\_\_\_\_

Sketch markings of Bearing Trees (or Rocks) in proper box and fill blanks below, giving bearings from Corner to Trees and Distances in Links.

<i>Trees destroyed, but</i>			

*I think this corner is properly located*

Species \_\_\_\_\_

Diameter \_\_\_\_\_

Bearing \_\_\_\_\_

Distance \_\_\_\_\_

Do you believe this to be a genuine Land Office Corner? *about*

If not, why? *This corner is located at an intersection in a road & all bearing trees are destroyed*

*J. M. Larson*

(Signature)

*Dec 5 1915*

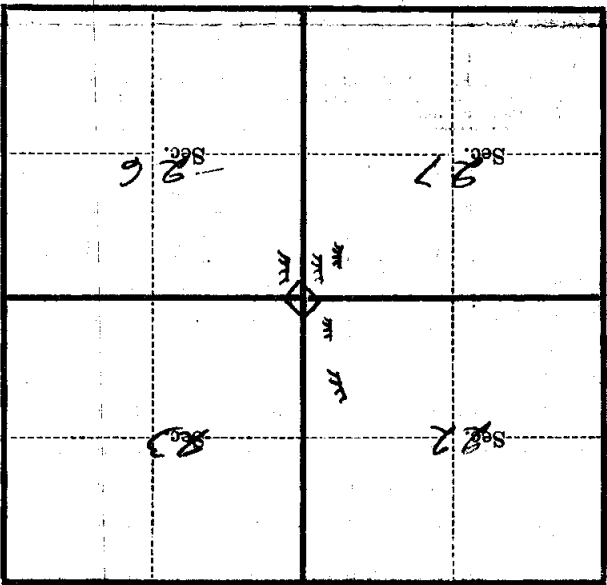
(Date)

*Compassman*

(Title)

Give any further facts which will aid in finding this Corner again.

Metal Location Poster is on a *Stephens pole* three inches diameter, on the *Northwest* side of *Stephens pole* from which this Corner bears *S. 34.° E.* *85* ~~feet~~ chains distant.



(Make sketch of topography near Corner)

T. 149 R. 27 S. 24 Mer.

U. S. Department of Agriculture

FOREST SERVICE

R1  
posted  
10/3

Chippewa NATIONAL FOREST

CORNERS OF THE PUBLIC SURVEY

T. 149 R. 27 Mer. 5

Section 17 Corner common to Sections 22, 23, 27, and 26

Corner consists of a (not) in place State condition

Dimensions above ground inches

Sketch grooves, letters, figures, or notches, on proper face or edge.

CARDINAL POSITION

DIAGONAL POSITION

--	--	--	--

N W S E

--	--	--	--

NW SW SE NE

Mound of is located

Pits are located

Sketch markings of Bearing Trees (or Rocks) in proper box and fill blanks below, giving bearings from Corner to Trees and Distances in Links.

S 76
---------

X 017 Rock
---------------

--

--

BT
----

--

--

--

Species N. Pine Rocks

Diameter 14" 5'

Bearing S. 84 E N. 70 W.

Distance 4 chs. 30 links

Do you believe this to be a genuine Land Office Corner? Yes

If not, why?

Gordon Sherman

(Signature)

Jan 17-34

(Date)

Engineer

(Title)

-----

-----

-----

-----

-----

-----

-----

-----

-----

-----

Corner again.

Give any further facts which will aid in finding this

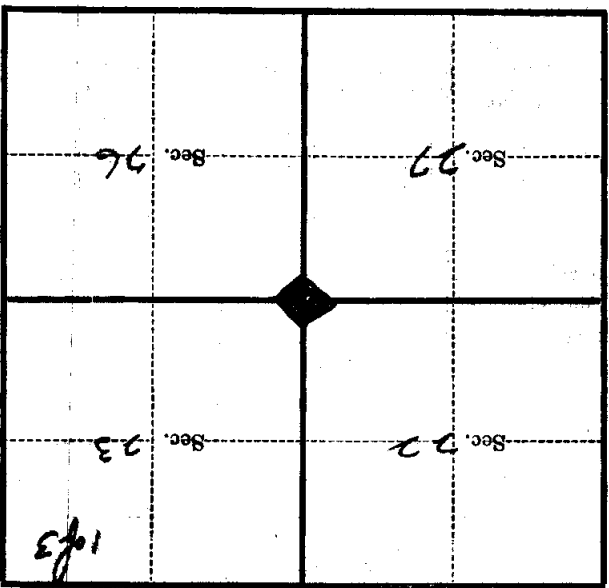
chains distant.

from which this Corner bears <sup>S</sup> 40 W

side of **Post**

tree inches diameter, on the North West

Metal Location Poster is on a **Telephans Post**



(Make sketch of topography near Corner)

T. 129 R. 27 Mer. 5 R-17

U. S. Department of Agriculture

FOREST SERVICE

Q17  
2 of 3

Chippewa Acq. NATIONAL FOREST

CORNERS OF THE PUBLIC SURVEY

T. 149 N R. 27 W 5th Mer.  
section Corner common to Sections  
22, 23, 27, and 26

Corner consists of a (not) in-place  
State condition

Dimensions above ground inches

Sketch grooves, letters, figures, or notches, on proper face or edge.

CARDINAL POSITION

DIAGONAL POSITION

N	W	S	E

NW	SW	SE	NE

Mound of is located

Pits are located

Sketch markings of Bearing Trees (or Rocks) in proper box and fill blanks below, giving bearings from Corner to Trees and Distances in Links.

B.M. #27	S 26			
-------------	------	--	--	--

B. T.			
-------	--	--	--

Species White Pine

Diameter stump

Bearing S 75° E

Distance 3.29 chains

Do you believe this to be a genuine Land Office Corner? Yes

If not, why?

Roy Nelson  
(Signature)

2/1/35  
(Date)

Chief of party CCC  
(Title)

R-17

Corner again.

Give any further facts which will aid in finding this

0.90 chains distant.

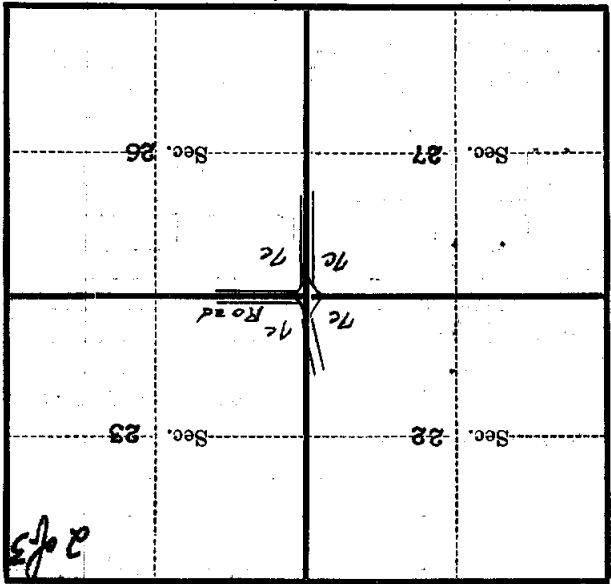
from which this Corner bears

S 36° E

side of

tree inches diameter, on the

Metal Location Poster is on a telephone post



(Make sketch of topography near Corner)

2 of 3  
R-17  
Mer.

U. S. Department of Agriculture

FOREST SERVICE

R17

3 of 3

CHIPPEWA NATIONAL FOREST

CORNERS OF THE PUBLIC SURVEY

T. 149N R. 27W 5th Mer.

SECTION Corner common to Sections

22, 23, 27, and 26

Corner consists of a ASPEN POST (not) in place

State condition OFFSET DUE WEST 44 LINKS

Dimensions above ground 40 inches

Sketch grooves, letters, figures, or notches, on proper face or edge.

CARDINAL POSITION

DIAGONAL POSITION

Cardinal position diagram with four empty boxes for N, W, S, E.

Diagonal position diagram with four empty boxes for NW, SW, SE, NE.

N W S E

NW SW SE NE

Mound of is located

Pits are located

Sketch markings of Bearing Trees (or Rocks) in proper box and fill blanks below, giving bearings from Corner to Trees and Distances in Links.

TREES DESTROYED. I THINK

CORNER IS PROPERLY LOCATED

Species

Diameter

Bearing

Distance

Do you believe this to be a genuine Land Office Corner?

If not, why?

J. M. Larson (Signature)

11-13-35 (Date)

Comptroller (Title)

R-17

Corner again.

Give any further facts which will aid in finding this

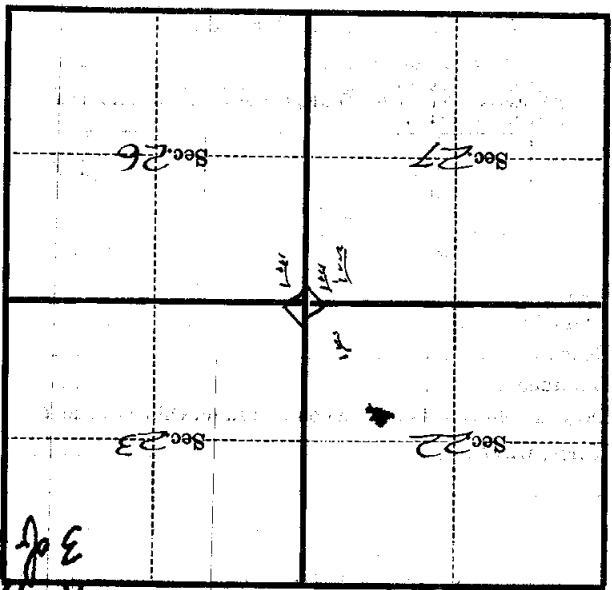
85 LINKS ~~chain~~ distant.

From which this Corner bears  $83^{\circ} E$

side of *LEFFHORE LAKE*

tree inches diameter, on the *NORTH WEST*

Metal Location Poster is on a *LEFFHORE LAKE*



(Make sketch of topography near Corner)

T. 149N. R. 27W.

5th

Mer.

3 of B  
R-17



U. S. Department of Agriculture  
FOREST SERVICE

CHIPPENAW NATIONAL FOREST

CORNERS OF THE PUBLIC SURVEY

T. 14 N R. 27 W 5th Mer.  
SECTION Corner common to Sections

22, 23, 27, and 26

Corner consists of a ASPEN POST (~~not~~) in place  
State condition OFFSET DUE WEST 44 LINKS

Dimensions above ground 40 inches

Sketch grooves, letters, figures, or notches, on proper face or edge.

CARDINAL POSITION

DIAGONAL POSITION

--	--	--	--

N W S E

--	--	--	--

NW SW SE NE

Mound of \_\_\_\_\_ is located \_\_\_\_\_

Pits are located \_\_\_\_\_

Sketch markings of Bearing Trees (or Rocks) in proper box and fill blanks below, giving bearings from Corner to Trees and Distances in Links.

TREES	DESTROYED.	I THINK
CORNER IS PROPERLY LOCATED		

Species \_\_\_\_\_

Diameter \_\_\_\_\_

Bearing \_\_\_\_\_

Distance \_\_\_\_\_

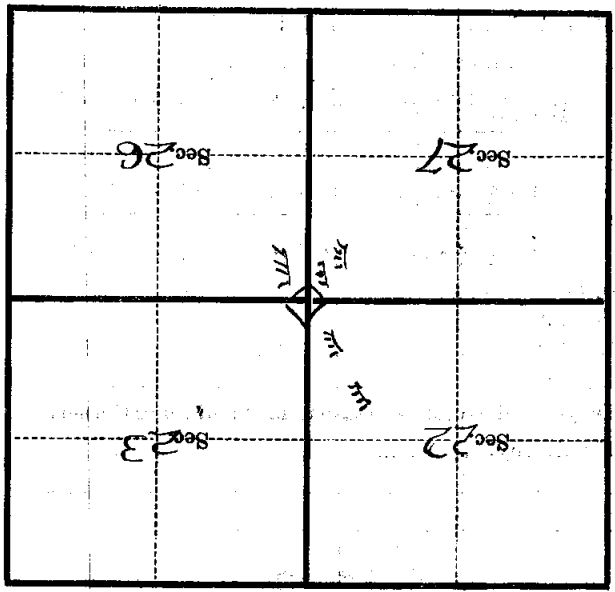
Do you believe this to be a genuine Land Office Corner? \_\_\_\_\_

If not, why? \_\_\_\_\_

J. M. Larson  
(Signature)

11-13-35  
(Date)

Comptroller  
(Title)



(Make sketch of topography near Corner)

T. 149 N. R. 27 W. 57 Mer.

Metal Location Poster is on a TELEPHONE POLE

tree - inches diameter, on the NORTHWEST

side of TELEPHONE POLE

from which this Corner bears S 34° E

85 LINKS ~~chain~~ distant.

Give any further facts which will aid in finding this

Corner again.

Form 874-9—Revised May, 1918  
**U. S. Department of Agriculture**  
**FOREST SERVICE**

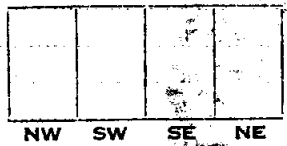
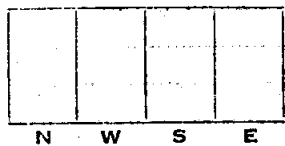
----- NATIONAL FOREST  
**CORNERS OF THE PUBLIC SURVEY**

T. 174 R. 27 5th Mer.

Section Corner common to Sections  
22, 23, 24, and 25

Corner consists of a ----- place  
 State condition -----

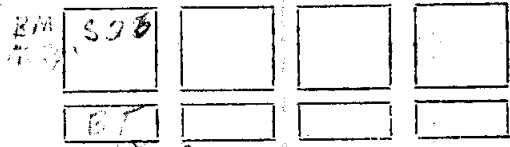
Dimensions above ground ----- inches  
 Sketch grooves, letters, figures, or notches, on proper face or edge.  
**CARDINAL POSITION** **DIAGONAL POSITION**



Mound of ----- is located -----

Pits are located -----

Sketch markings of Bearing Trees (or Rocks) in proper box and fill blanks below, giving bearings from Corner to Trees and Distances in Links.



Species White P  
 Diameter Stump  
 Bearing S 76 E  
 Distance 3 chains 9

Do you believe this to be a genuine Land Office Corner? Y

If not, why? -----

2-1-25  
 (Date)

(Signature) Ray Nelson  
 (Title) R-17

Dotted lines for notes.

Corner again.

Give any further facts which will aid in finding this

chains distant.

981

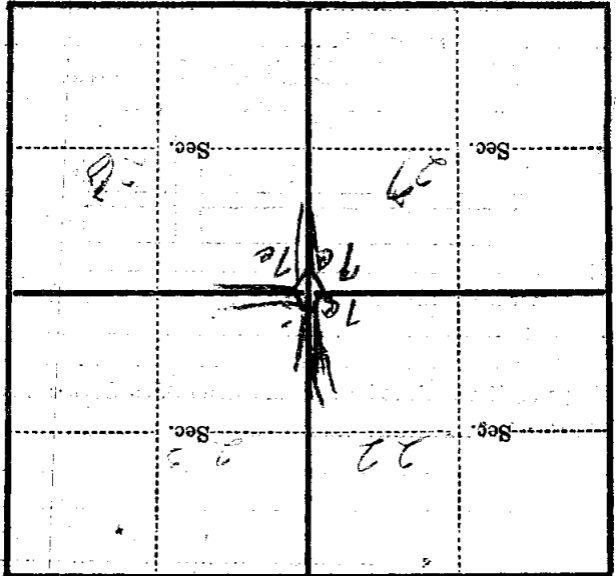
from which this Corner bears

S 27° E

side of

tree inches diameter, on the

Metal Location Poster is on a TELEPHONE POLE



(Make sketch of topography near Corner)