

Form 874-B—Revised May, 1918
U. S. Department of Agriculture
FOREST SERVICE

EIS
1912

Chippewa Acq. NATIONAL FOREST

CORNERS OF THE PUBLIC SURVEY

T. 149N R. 27W 5th Mer.
Quarter Corner common to Sections

3, and 10

Corner consists of a post (not) in place

State condition Good

Dimensions above ground 28 inches

Sketch grooves, letters, figures, or notches, on proper face or edge.

CARDINAL POSITION

DIAGONAL POSITION

1/4		1/4	
S		S	
3		10	
N	W	S	E

NW	SW	SE	NE

Mound of is located

Pits are located

Sketch markings of Bearing Trees (or Rocks) in proper box and fill blanks below, giving bearings from Corner to Trees and Distances in Links.

1/4 S 3	1/4 S 10		
B.T.	B.T.		

Species Oak Balsam

Diameter 10" 3"

Bearing East North

Distance 28 11/16 24 links

Do you believe this to be a genuine Land Office Corner? Yes

If not, why?

Roy Nelson

Chief of Party, CBC

3/14/35
(Date)

Corner again.

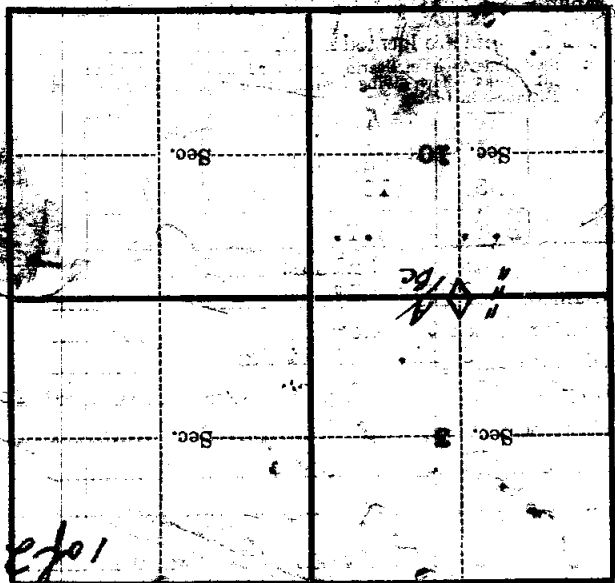
Give any further facts which will aid in finding this

tree 30 inches diameter, on the west side of

from which this Corner bears East

tree 30 inches diameter, on the west

side of



(Make sketch of topography near Corner)

1 of 3
E-15

U. S. Department of Agriculture
FOREST SERVICE

E 15
2 of 2

NATIONAL FOREST

CORNERS OF THE PUBLIC SURVEY

T. 149 R. 27 52 Mer.

7 Corner common to Sections 3, and 10.

Corner consists of a stone (not) in place
State condition good

Dimensions above ground _____ inches

Sketch grooves, letters, figures, or notches, on proper face or edge.

CARDINAL POSITION

DIAGONAL POSITION

--	--	--	--

N W S E

--	--	--	--

NW SW SE NE

Mound of _____ is located _____

Pits are located _____

Sketch markings of Bearing Trees (or Rocks) in proper box and fill blanks below, giving bearings from Corner to Trees and Distances in Links.

9 3	5 3	5 10	5 3
<u>old</u> BT	<u>old</u> BT	<u>new</u> BT	<u>new</u> BT

Species Balsam Oak Maple Balsam
Diameter 7" Stamp 14" 6" 8"
Bearing N 1° E N 84° E S 21° W N 45° E
Distance 15.8' 10.5' 69.0' 52.0'

Do you believe this to be a genuine Land Office Corner? _____

If not, why? _____

(Signature)

4-8-58
(Date)

(Title)

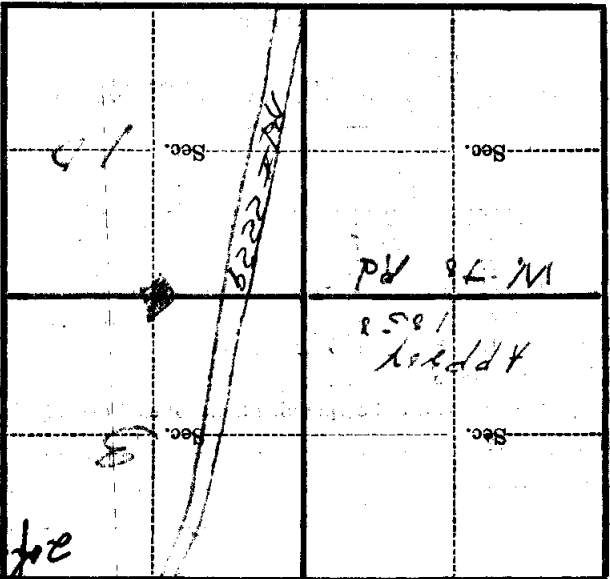
E-15

Corner again.
I blood line west
to rd

Give any further facts which will aid in finding this
1858
stains distant.

from which this Corner bears
5 83° W
side of

tree 1 1/2 inches diameter, on the
tree
ORH
MCSA
Metal Location Poster is on a



(Make sketch of topography near Corner) E-15

T. 149 R. 57
Mer.

U. S. Department of Agriculture

FOREST SERVICE

E-15

NATIONAL FOREST

CORNERS OF THE PUBLIC SURVEY

T. 14th R. 27th Mer. 5th

Quarter

Corner common to Sections

3, and 10

Corner consists of a Post in place

State condition Good

Dimensions above ground inches

Sketch grooves, letters, figures, or notches, on proper face or edge.

CARDINAL POSITION

DIAGONAL POSITION

14 5 3		14 5 10	
N	W	S	E

NW	SW	SE	NE

Mound of is located

Pits are located

Sketch markings of Bearing Trees (or Rocks) in proper box and fill blanks below, giving bearings from Corner to Trees and Distances in Links.

14 5 3	14 5 10		
BT	BT		

Species OAK BALSAW

Diameter 10" 3"

Bearing EAST NORTH

Distance 241 241

Do you believe this to be a genuine Land Office Corner? y

If not, why?

Ray Wilson

(Signature)

Chief of Party

(Title)

3/14/55

(Date)

Corner again.

Give any further facts which will aid in finding this

28'
observed distant.

From which this Corner bears

EAST

side of

TRAIL

tree *10* inches diameter, on the

WEST

Metal Location Poster is on a

DAIR

	Sec.		Sec.
	Sec.		Sec.

(Make sketch of topography near Corner)

T. R. Mer.