

S. Department of Agriculture
FOREST SERVICE

E13

NATIONAL FOREST

CORNERS OF THE PUBLIC SURVEY

T. 149 R. 27 Mer.

Section Corner common to Sections

3, 4, 9, and 10

Corner consists of a 4x4 post scribed (not) in place
State condition POST

Dimensions above ground 20 inches

Sketch grooves, letters, figures, or notches, on proper face or edge.

CARDINAL POSITION

DIAGONAL POSITION



N W S E

NW SW SE NE

Mound of _____ is located _____

Pits are located _____

Sketch markings of Bearing Trees (or Rocks) in proper box and fill blanks below, giving bearings from Corner to Trees and Distances in Links.

S 4	S 9	S 10	S 3
<u>new</u>	<u>new</u>	<u>new</u>	<u>new</u>
B.T.	B.T.	B.T.	B.T.

Species Laxwood Maple Maple Maple

Diameter 5" 8" 7" 7"

Bearing N 65° W S 45° W S 44° E N 52° E

Distance 19.5' 24.6' 38.9' 42.9'

Do you believe this to be a genuine Land Office Corner? _____

If not, why? _____

(Signature)

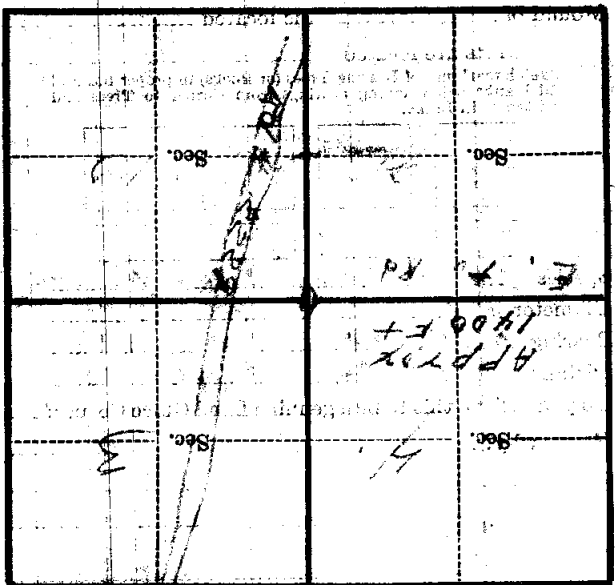
Apr 7. 58

(Date)

(Title)

Corner again.
 6/10/57
 100

Give any further facts which will aid in finding this
 from which this corner bears
 side of
 tree 8 inches diameter, on the N.E.
 Metal Location Poster is on a



(Make sketch of topography near Corner)

T. 149 R. 27 Mer.

U. S. Department of Agriculture
FOREST SERVICE

E13

Chippewa ~~Acq.~~ NATIONAL FOREST**CORNERS OF THE PUBLIC SURVEY**

T. 149N R. 27W 5th Mer.

Section Corner common to Sections

3, 4, 9, and 10

Corner consists of a post (not) in place

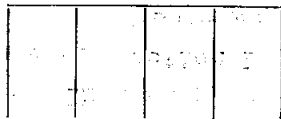
State condition Good.

Dimensions above ground 30 inches

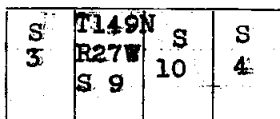
Sketch grooves, letters, figures, or notches, on proper face or edge.

CARDINAL POSITION

DIAGONAL POSITION



N W S E



NW SW SE NE

Mound of _____ is located _____

Pits are located _____

Sketch markings of Bearing Trees (or Rocks) in proper box and fill blanks below, giving bearings from Corner to Trees and Distances in Links.

T149N R27W S 4	S 3	T149N R27W S 10	
B.T.	B.T.	B. T.	

Species Aspen Ash Ash

Diameter 12" 6" 8"

Bearing N43°W N65°E South

Distance 5 li. 3/11. 36 links

Do you believe this to be a genuine Land Office Corner? Yes

If not, why? _____

Roy Nelson
(Signature)

2/28/35

(Date)

Chief of party. CCC

(Title)

Lined area for notes at the top of the page.

Corner again.

Give any further facts which will aid in finding this

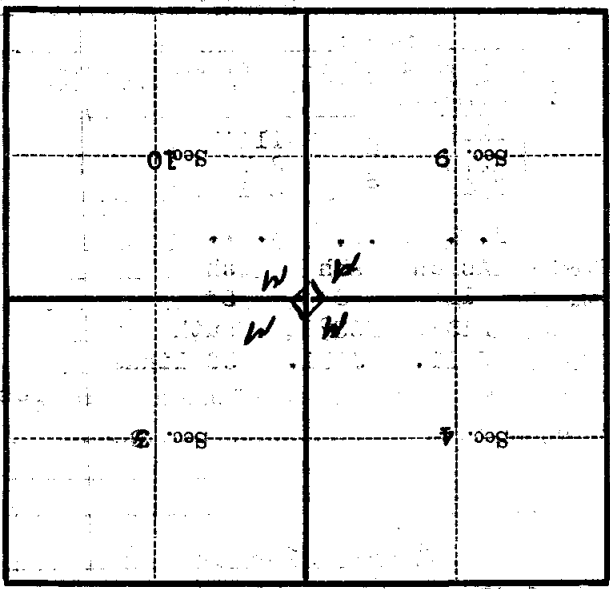
•05 chains distant.

from which this Corner bears N 43° W

side of section 10

tree 12 inches diameter, on the NW

Metal Location Poster is on a Aspen



(Make sketch of topography near Corner)

U. S. Department of Agriculture
FOREST SERVICE

E-13

NATIONAL FOREST
CORNERS OF THE PUBLIC SURVEY

T. 11N R. 27W S. 5 Mer.

Corner common to Sections

3, 4, 9, and 10

Corner consists of a Post (not) in place

State condition Good

Dimensions above ground 30 inches

Sketch grooves, letters, figures, or notches, on proper face or edge.

CARDINAL POSITION

DIAGONAL POSITION

--	--	--	--

S	T149N R27W	S	S
3	39.10	10	11

N W S E

NW SW SE NE

Mound of _____ is located _____

Pits are located _____

Sketch markings of Bearing Trees (or Rocks) in proper box and fill blanks below, giving bearings from Corner to Trees and Distances in Links.

T147N R27W S4

S 3

T149N R27W S10

--

BT

BT

BT

--

Species ASANA ASH ASH

Diameter 12" 6" 8"

Bearing N43°W N63°E South

Distance 54 311 304

Do you believe this to be a genuine Land Office Corner? Y

If not, why? _____

Ray M. ...
(Signature)

(Date)

(Title)

E-13

Corner again.

Give any further facts which will aid in finding this

~~chain~~ distant.

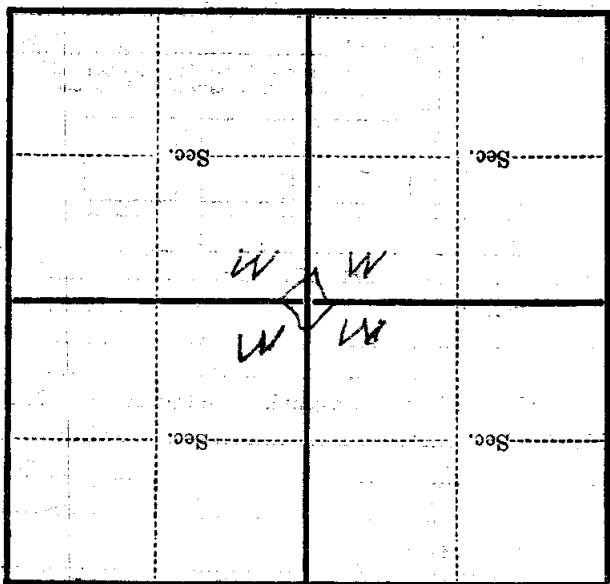
51

from which this Corner bears $N 43^{\circ} W$

side of

tree $1/2$ " inches diameter, on the

Metal Location Poster is on a $ASPEM$



(Make sketch of topography near Corner)

T 149 N R 27 W 5th Mer

U. S. Department of Agriculture
FOREST SERVICE

E-13

Supply NATIONAL FOREST
CORNERS OF THE PUBLIC SURVEY

T. 27N R. 27W S. 7 Mer.

Corner common to Sections
3, 4, 7, and 10

Corner consists of a Post (not) in place
State condition good

Dimensions above ground 30 inches
Sketch grooves, letters, figures, or notches, on proper face or edge.

N	W	S	E

S	27N R 27W	S	S
3	39	10	11
NW	SW	SE	NE

Mound of _____ is located _____

Pits are located _____

Sketch markings of Bearing Trees (or Rocks) in proper box and fill blanks below, giving bearings from Corner to Trees and Distances in Links.

T49N R27W S4	S 3	T49N R27W S10	
BT	BT	BT	

Species ASH ASH ASH

Diameter 12" 6" 8"

Bearing N43°W N65°E South

Distance 57 312 307

Do you believe this to be a genuine Land Office Corner? Y

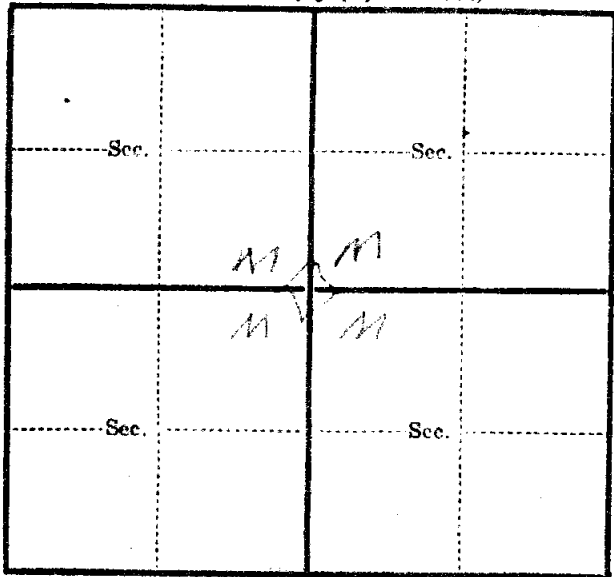
If not, why? _____

2/28/35
(Date)

Roy Nelson
(Signature)
Chief of Party
(Title)

T. 119 N R. 7 W 57th Mer.

(Make sketch of topography near Corner)



Metal Location Poster is on a Apple
tree 1 1/2 inches diameter, on the
side of _____
from which this Corner bears N 43° W
51 chains distant.

Give any further facts which will aid in finding this
Corner again.

E-13