

U. S. Department of Agriculture

FOREST SERVICE

V-5
10/2

Chippewa NATIONAL FOREST

CORNERS OF THE PUBLIC SURVEY

T. 149 N R. 25 W 5th Mer.

Section Corner common to Sections
20, 29, 32, and 31

Corner consists of a Wooden Stake (not) in place
State condition Rotted At Base

Dimensions above ground 36 inches

Sketch grooves, letters, figures, or notches, on proper face or edge.

CARDINAL POSITION

DIAGONAL POSITION

N	W	S	E

T149			
R25	S 51	S 32	S 29
S 30			
NW	SW	SE	NE

Mound of _____ is located _____

Pits are located _____

Sketch markings of Bearing Trees (or Rocks) in proper box and fill blanks below, giving bearings from Corner to Trees and Distances in Links.

Species _____

Diameter _____

Bearing _____

Distance _____

Do you believe this to be a genuine Land Office Corner? _____

If not, why? _____

Ralph Johnson

(Signature)

Construction Foreman

(Title)

9/21/34
(Date)

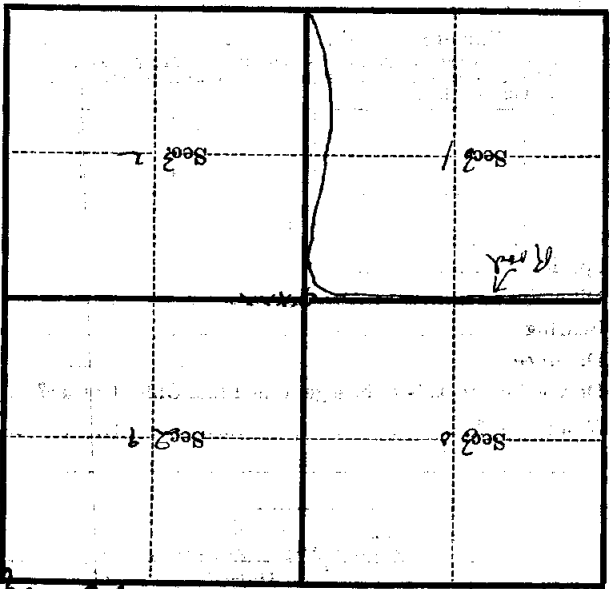
1
Type - Brush

Corner again.
Road runs by sec corner
is NW cor of farm corner

Give any further facts which will aid in finding this
chains distant.

117
from which this Corner bears
side of T 22 R

Metal Location Poster is on a
tree 7 inches diameter, on the
SE



(Make sketch of topography near Corner)

T. 149 N. R. 25 W. 67
Met 15 182

U. S. Department of Agriculture

FOREST SERVICE

V-5
2 of 2

Chippewa NATIONAL FOREST

CORNERS OF THE PUBLIC SURVEY

T. 189N. R. 25W. 51A Mer.

Section Corner common to Sections

29, 30, 31, and 32

Corner consists of a Wood Post (set) in place

State condition Good (scribed by County)

Dimensions above ground 36 inches

Sketch grooves, letters, figures, or notches, on proper face or edge.

CARDINAL POSITION

DIAGONAL POSITION

N	W	S	E

NW	SW	SE	NE

Mound of _____ is located _____

Pits are located _____

Sketch markings of Bearing Trees (or Rocks) in proper box and fill blanks below, giving bearings from Corner to Trees and Distances in Links.

Species Cot. Free Post

Diameter 7"

Bearing S 88° E

46. Distance 99

Do you believe this to be a genuine Land Office Corner? Yes.

If not, why? _____

J.A. Gjeltrang
(Signature)

Jr. Civil Eng.
(Title)

1/25/36
(Date)

Corner again.
Corner is located at intersection
of Road (Center line) Tangents produced.

Give any further facts which will aid in finding this

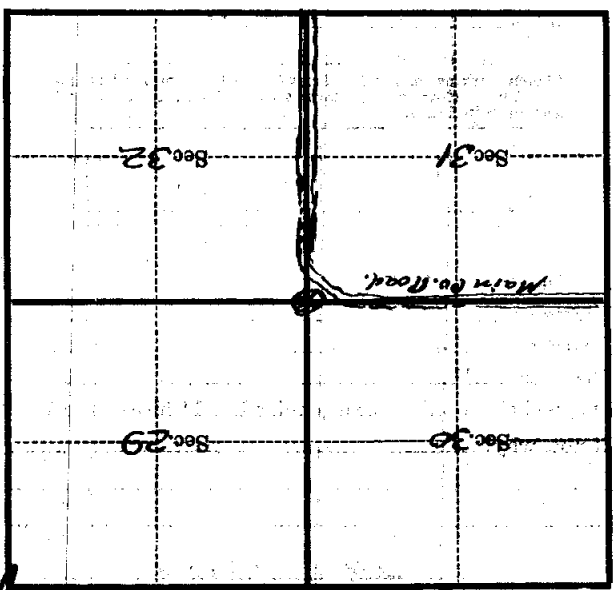
049 chains distant.

from which this Corner bears N. 88° W

side of Post

tree 7 inches diameter, on the West

Metal Location Poster is on a Corner Iron Post



(Make sketch of topography near Corner)

15 20/32

Mer.

5 1/2

T 19 N. R. 25 W.