

K-2-9

Form 874-9—Revised May, 1918

U. S. Department of Agriculture

FOREST SERVICE

Chippewa NATIONAL FOREST

CORNERS OF THE PUBLIC SURVEY

T. 148N R. 30W 5th P Mer.

McBride Corner common to Sections

16, and 17

Corner consists of a Cedar Post (not) in place

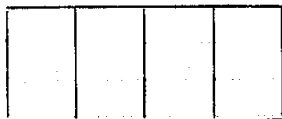
State condition Good

Dimensions above ground 48" inches

Sketch grooves, letters, figures, or notches, on proper face or edge.

CARDINAL POSITION

DIAGONAL POSITION



Mound of is located

Pits are located

Sketch markings of Bearing Trees (or Rocks) in proper box and fill blanks below, giving bearings from Corner to Trees and Distances in Links.

MC 3.16

MC 5.17

Orig poles in Red

B.T.

BT.

Species Cedar Cedar

Diameter 7" 9"

Bearing S. 18° E. S. 9° W.

Distance 31.56 50.64

Do you believe this to be a genuine Land Office Corner? Yes

If not, why?

J.A. Gethung

(Signature)

Jr. Civil Eng.

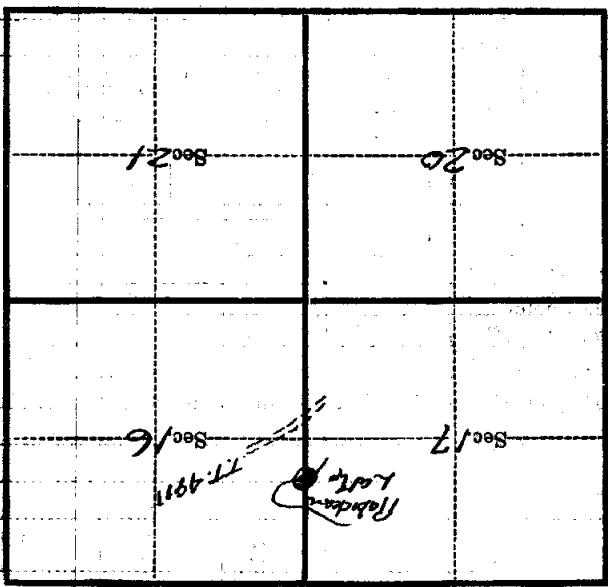
(Title)

12/1/37

(Date)

K-2-9

Metal Location Poster is on a tree inches diameter, on the side of from which this Corner bears chains distant. Give any further facts which will aid in finding this Corner again.



(Make sketch of topography near Corner)

T. 198N. R. 30W. 5th Mer. K-7-9