

U. S. Department of Agriculture

FOREST SERVICE

Chippewa NATIONAL FOREST

CORNERS OF THE PUBLIC SURVEY

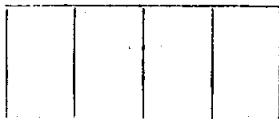
T. 148 N. R. 30 W. 5th P. Mer. Quarter Corner common to Sections 13, and 24

Corner consists of a (not) in place State condition In center line of road

Dimensions above ground inches Sketch grooves, letters, figures, or notches, on proper face or edge.

CARDINAL POSITION

DIAGONAL POSITION



N W S E

NW SW SE NE

Mound of is located

Pits are located

Sketch markings of Bearing Trees (or Rocks) in proper box and fill blanks below, giving bearings from Corner to Trees and Distances in Links.

County B. T.



B. T.

Species Pine Stp.

Diameter 10"

Bearing N. 42° E.

Distance 95

Do you believe this to be a genuine Land Office Corner? Yes

If not, why?

K. V. Styler

(Signature)

Leader

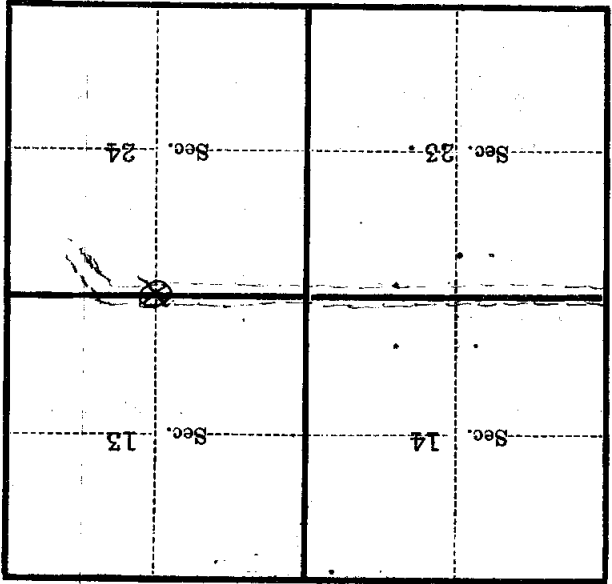
4/13/38

(Date)

(Title)

Metal Location Poster is on a Birch tree 8 inches diameter, on the side of Tree from which this Corner bears N. 8° E. 0.45 chains distant.

Give any further facts which will aid in finding this Corner again.



(Make sketch of topography near Corner)

T. 148 N. R. 30 W. 5th P. Mer. N-23

Form 874-B—Revised May, 1918
U. S. Department of Agriculture
FOREST SERVICE

Chippewa NATIONAL FOREST

CORNERS OF THE PUBLIC SURVEY

T. 148N. R. 30W. 5th P. Mer.
Quarter Corner common to Sections
13, and 24

Corner consists of a _____ (not) in place

State condition In Center Line of Road

Dimensions above ground _____ inches

Sketch grooves, letters, figures, or notches, on proper face or edge.

CARDINAL POSITION

DIAGONAL POSITION

--	--	--	--

N W S E

--	--	--	--

NW SW SE NE

Mound of _____ is located _____

_____ Pits are located _____

Sketch markings of Bearing Trees (or Rocks) in proper box and fill blanks below, giving bearings from Corner to Trees and Distances in Links.

County B.T.

--	--	--	--

<u>B.T.</u>			
-------------	--	--	--

Species Pink Spr.

Diameter 10"

Bearing N. 42° E.

Distance 95

Do you believe this to be a genuine Land Office Corner? Yes.

If not, why? _____

K. V. Styler
(Signature)

Leader

(Title)

5/13/38

(Date)

Corner again.
Give any further facts which will aid in finding this

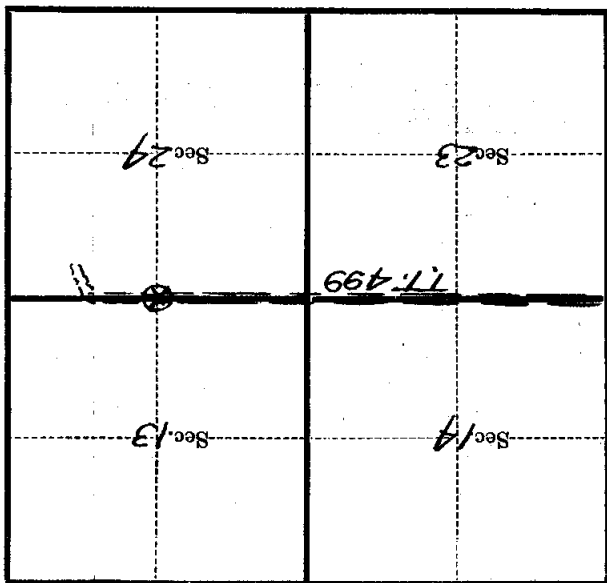
0.95 chains distant.

from which this Corner bears N. 8° E.

side of tree

tree 8 inches diameter, on the North

Metal Location Poster is on a Birch



(Make sketch of topography near Corner)

T. 148 N. R. 30 W. 5118 Mer.