

N-17

U. S. Department of Agriculture

FOREST SERVICE

Chippewa NATIONAL FOREST

Allen Panted

CORNERS OF THE PUBLIC SURVEY

T. 148 N. R. 30 W. 5 th P. Mer.

Section Corner common to Sections

14, 15, 22, and 23

Corner consists of a Wood Post in place

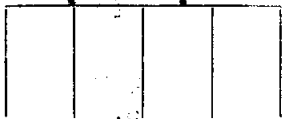
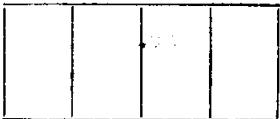
State condition Good Scribed

Dimensions above ground 24 inches

Sketch grooves, letters, figures, or notches, on proper face or edge.

CARDINAL POSITION

DIAGONAL POSITION



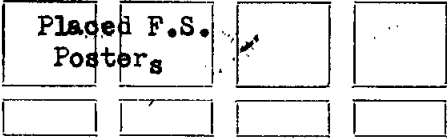
N W S E

NW SW SE NE

Mound of is located

Pits are located

Sketch markings of Bearing Trees (or Rocks) in proper box and fill blanks below, giving bearings from Corner to Trees and Distances in Links.



Species Tam'c Tam'c

Diameter 3" 3"

Bearing S. 51° W. N. 64° W.

Distance 27 38

Do you believe this to be a genuine Land Office Corner? Yes

If not, why?

K. Styler

(Signature)

2/16/38

(Date)

Compass Man

(Title)

N-17

Lined writing area with two punch holes at the top.

W.M.

Corner again.

Give any further facts which will aid in finding this

chains distant.

0.27

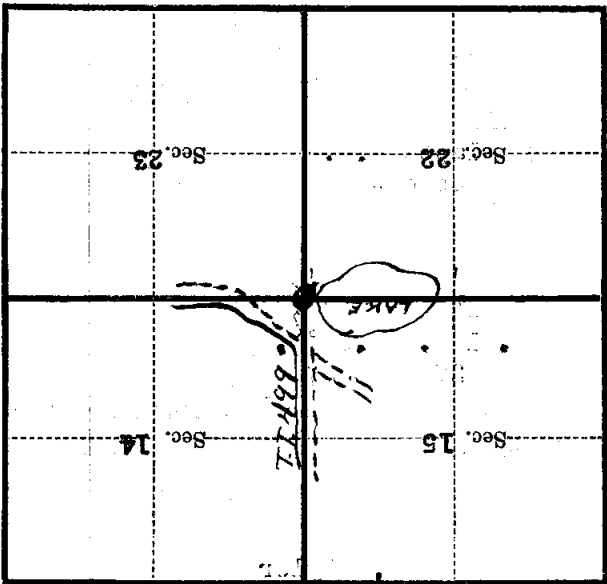
from which this Corner bears

N. 51° E.

side of Tree

tree 5 inches diameter, on the East

Metal Location Poster is on a Tam'c



(Make sketch of topography near Corner)

T. 148 N. R. 30 W. 5 th P. Mer.

N-17

U. S. Department of Agriculture

FOREST SERVICE

posted

Chippewa

NATIONAL FOREST

CORNERS OF THE PUBLIC SURVEY

T. *148* R. *30* Mer.

Sec Corner common to Sections

14, 15, 22, and 23

Corner consists of a *Tam. State* (not) in place

State condition *good*

Dimensions above ground *2 1/2 ft.* inches

Sketch grooves, letters, figures, or notches, on proper face or edge.

CARDINAL POSITION

DIAGONAL POSITION

N	W	S	E

	T148		R30
S	N	S	S
15	S23	22	14
NW	SW	SE	NE

Mound of _____ is located _____

Pits are located _____

Sketch markings of Bearing Trees (or Rocks) in proper box and fill blanks below, giving bearings from Corner to Trees and Distances in Links.

Species _____

Diameter *None*

Bearing _____

Distance _____

Do you believe this to be a genuine Land Office Corner? *Yes*

If not, why? _____

E. J. ...

(Signature)

...

(Title)

1/20/33
(Date)

Four other boys

Corner again.

Give any further facts which will aid in finding this

chains distant.

from which this Corner bears

side of

tree inches diameter, on the

Metal Location Poster is on a

	Sec.		Sec.
	Sec.		Sec.

(Make sketch of topography near Corner)

Form 874-B—Revised May, 1918
U. S. Department of Agriculture
FOREST SERVICE

Chippewa NATIONAL FOREST

CORNERS OF THE PUBLIC SURVEY

T. 148N R. 30W 511P. Mer.

Section Corner common to Sections
14, 15, 22, and 23

Corner consists of a wood post (not) in place

State condition Good Scribed

Dimensions above ground 2 1/2 inches
Sketch grooves, letters, figures, or notches, on proper face or edge.

CARDINAL POSITION

DIAGONAL POSITION

--	--	--	--

N W S E

--	--	--	--

NW SW SE NE

Mound of _____ is located _____

Pits are located _____

Sketch markings of Bearing Trees (or Rocks) in proper box and fill blanks below, giving bearings from Corner to Trees and Distances in Links.

<u>Placed FS.</u>		
<u>Posters</u>		

Species Tam'e Tam'e.

Diameter 3" 3"

Bearing S. 51° W. N. 64° W.

Distance 27 30

Do you believe this to be a genuine Land Office Corner? ✓

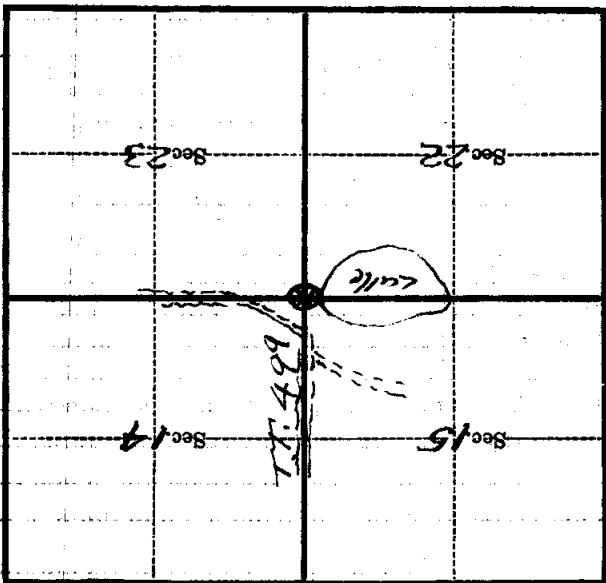
If not, why? _____

2/15/38
(Date)

N. J. Tyler
(Signature)

Comptroller
(Title)

Corner again.
 Give any further facts which will aid in finding this
 0.27 chains distant.
 from which this Corner bears
 N. 51° E.
 side of *Tree*
 tree 3 inches diameter, on the *East*
 Metal Location Poster is on a *Tangle*



(Make sketch of topography near Corner)

T. 148N R. 30W 5th P. Mer.