

U. S. Department of Agriculture
FOREST SERVICE

1 of 2

E-13

Chippewa NATIONAL FOREST

CORNERS OF THE PUBLIC SURVEY

T. *148* R. *30* *5th* Mer.

Corner common to Sections
3, *4*, *9*, and *10*.

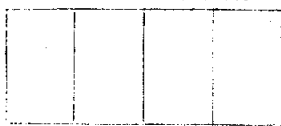
Corner consists of a _____ (not) in place
State condition _____

Dimensions above ground _____ inches

Sketch grooves, letters, figures, or notches, on proper face or edge.

CARDINAL POSITION

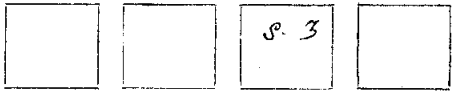
DIAGONAL POSITION



Mound of _____ is located _____

Pits are located _____

Sketch markings of Bearing Trees (or Rocks) in proper box and fill blanks below, giving bearings from Corner to Trees and Distances in Links.



Species *T. R. M.* *T. R. M.* *T. R. M.*

Diameter *4"* *5"* *3"*

Bearing *S 73 E* *N 21 W* *N 49 E*

Distance *.33 ch* *.73 ch* *.91 ch*

Do you believe this to be a genuine Land Office Corner? *Yes*

If not, why? _____

[Signature]
(Signature)

9/2/35
(Date)

E-13

Corner again.

Give any further facts which will aid in finding this

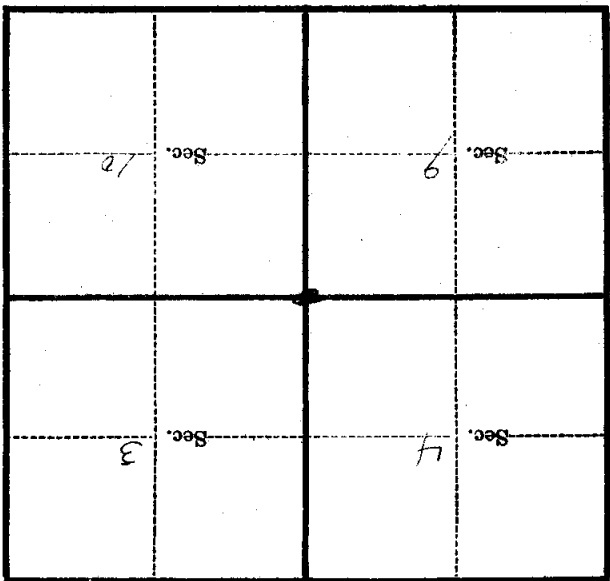
25 chains distant.

from which this Corner bears

side of ~~the~~

tree 6 inches diameter, on the ~~left~~

Metal Location Poster is on a ~~stone~~



(Make sketch of topography near Corner)

T. 48 R. 30
 1002 5 A
 Mer. E-13

Form 874-9—Revised May, 1918

U. S. Department of Agriculture

FOREST SERVICE

Chippewa NATIONAL FOREST

CORNERS OF THE PUBLIC SURVEY

T. 148 N. R. 30 W. 5th. P. Mer.

Section Corner common to Sections

3, 4, 9, and 10

Corner consists of a Wood Post in place

State condition Good

Dimensions above ground 40 inches

Sketch grooves, letters, figures, or notches, on proper face or edge.

CARDINAL POSITION

DIAGONAL POSITION



N W S E

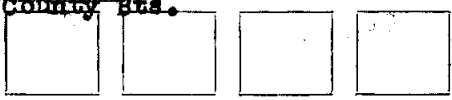


NW SW SE NE

Mound of is located

Pits are located

Sketch markings of Bearing Trees (or Rocks) in proper box and fill blanks below, giving bearings from Corner to Trees and Distances in Links



B.T. B.T. B.T.

Species Tam'o. Stp. Tam'o. Spruce Down

Diameter 6" 4" 6"

Bearing S.68°E. N.60°E. N.21°W.

Distance 32 57 72

Do you believe this to be a genuine Land Office Corner? Yes

If not, why?

H. Hoard

(Signature)

7/27/39 (Date)

Compass Man (Title)

Corner again.

Give any further facts which will aid in finding this

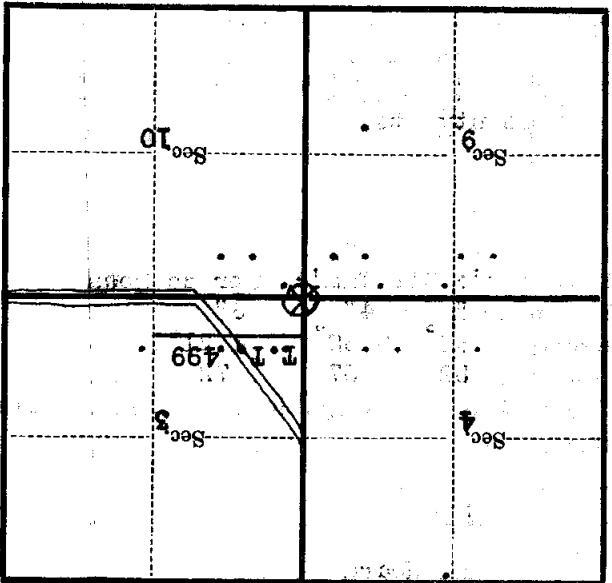
0.16 chains distant.

from which this Corner bears N. 71° E.

side of Tree

5 inches diameter, on the N.E.

Metal Location Poster is on a Spruce



(Make sketch of topography near Corner)

T. 148 N. R. 30 W. 5th. p. Mer.

E-13

272

Form 874-9—Revised May, 1918
U. S. Department of Agriculture
FOREST SERVICE

Chippewa NATIONAL FOREST

CORNERS OF THE PUBLIC SURVEY

T. 148 N. R. 30 W. 5th. P. Mer.

Section Corner common to Sections

3, 4, 9, and 10

Corner consists of a Wood Post ~~xxx~~ in place

State condition Good

Dimensions above ground 40 inches

Sketch grooves, letters, figures, or notches, on proper face or edge.

CARDINAL POSITION

DIAGONAL POSITION

--	--	--	--

N W S E

--	--	--	--

NW SW SE NE

Mound of _____ is located _____

Pits are located _____

Sketch markings of Bearing Trees (or Rocks) in proper box and fill blanks below, giving bearings from Corner to Trees and Distances in Links.

County Sts.

--	--	--	--

B.T. B.T. B.T.

Species Tam'c. Stp. Tam'c. Spruce ~~DoDA~~

Diameter 6" 4" 6"

Bearing S. 68° E. N. 60° E. N. 21° W.

Distance 32 57 72

Do you believe this to be a genuine Land Office Corner? Yes

If not, why? _____

H. Hoard

(Signature)

7/27/39

(Date)

Compass Man

(Title)

Corner again.

Give any further facts which will aid in finding this

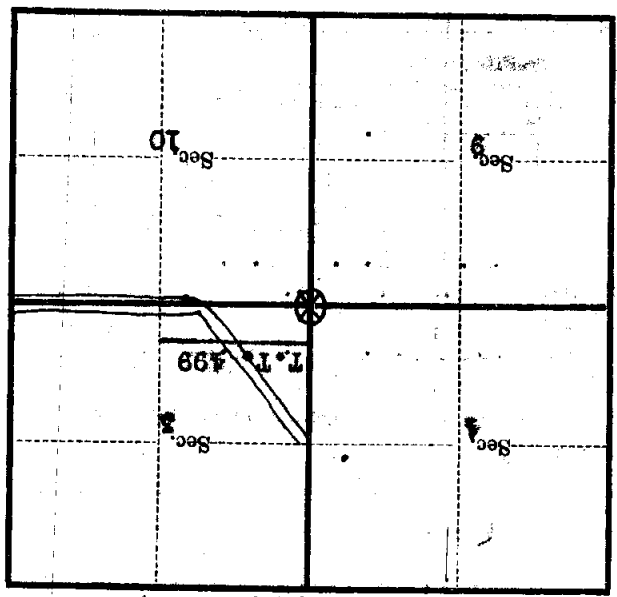
0.16 chains distant.

From which this Corner bears N. 71° E.

side of Tree

5 inches diameter, on the N.E.

Metal Location Poster is on a sign



(Make sketch of topography near Corner)

T. 148 N. R. 30 W. S. 4. P. Mer.

Form 574-B—Revised May, 1918
 U. S. Department of Agriculture
 FOREST SERVICE

Chippewa NATIONAL FOREST

CORNERS OF THE PUBLIC SURVEY

T. 148 N. R. 30 W. 513 P. Mer.

Section Corner common to Sections
3, 4, 9, and 10

Corner consists of a Wood Post (~~rod~~) in place

State condition Good

Dimensions above ground 40 inches

Sketch grooves, letters, figures, or notches, on proper face or edge.

CARDINAL POSITION

DIAGONAL POSITION

N	W	S	E

NW	SW	SE	NE

Mound of _____ is located _____

Pits are located _____

Sketch markings of Bearing Trees (or Rocks) in proper box and fill blanks below, giving bearings from Corner to Trees and Distances in Links.

County B.T.s

B.T.	B.T.	B.T.	

Species	<u>Tamiasp.</u>	<u>Tamias</u>	<u>Spruce, Down</u>
Diameter	<u>6"</u>	<u>4"</u>	<u>6"</u>
Bearing	<u>S. 68° E</u>	<u>N. 60° E</u>	<u>N. 21° W</u>
Distance	<u>32</u>	<u>57</u>	<u>72</u>

Do you believe this to be a genuine Land Office Corner? Y/S.

If not, why? _____

H. Hoard

(Signature)

Compass Man

(Title)

7/27/39

(Date)

U. S. Department of Agriculture
FOREST SERVICE

Chippewa..... NATIONAL FOREST

CORNERS OF THE PUBLIC SURVEY

T. *148*..... R. *30*..... *5th* Mer.

..... Corner common to Sections
3, *4*, *9*, and *10*.....

Corner consists of a (not) in place
State condition

Dimensions above ground inches

Sketch grooves, letters, figures, or notches, on proper face or edge.

CARDINAL POSITION

DIAGONAL POSITION

--	--	--	--

N W S E

--	--	--	--

NW SW SE NE

Mound of is located

..... Pits are located

Sketch markings of Bearing Trees (or Rocks) in proper box and fill blanks below, giving bearings from Corner to Trees and Distances in Links.

		S-3	
--	--	-----	--

BT	BT	BT	
----	----	----	--

Species *Tam. Tam. Tam.*.....

Diameter *4*..... *5*..... *3*.....

Bearing *S73 E*..... *N21 W*..... *N49 E*.....

Distance *33 ch*..... *73 ch*..... *91 ch*.....

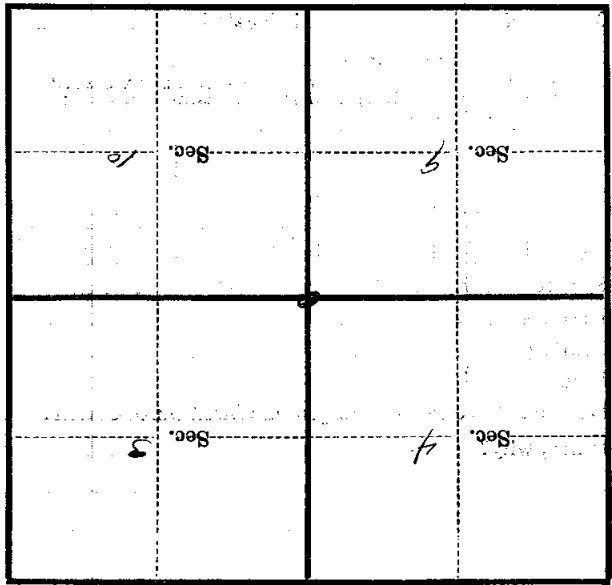
Do you believe this to be a genuine Land Office Corner? *Y*

If not, why?

Draughy
(Signature)

9/12/35
(Date)

Metal Location Poster is on a *Stamens*
 tree 6 inches diameter, on the *West*
 side of *Corner*
 from which this Corner bears *W*
 chains distant. *4.5*
 Give any further facts which will aid in finding this
 Corner again.



(Make sketch of topography near Corner)

T. L. F. R. 32 *52* Mer.