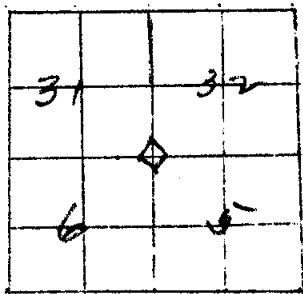


Section Corners S.E. Secs. 31-32-5-6

T 147-148 R 30W Mer. 5th



Corner is
a Not Vis

Height

Dia

Marked

BEARING TREES

Marks BT. Sec. S 5747 R 30

Species Aspen

Diameter 10"

Bearing S 35 E

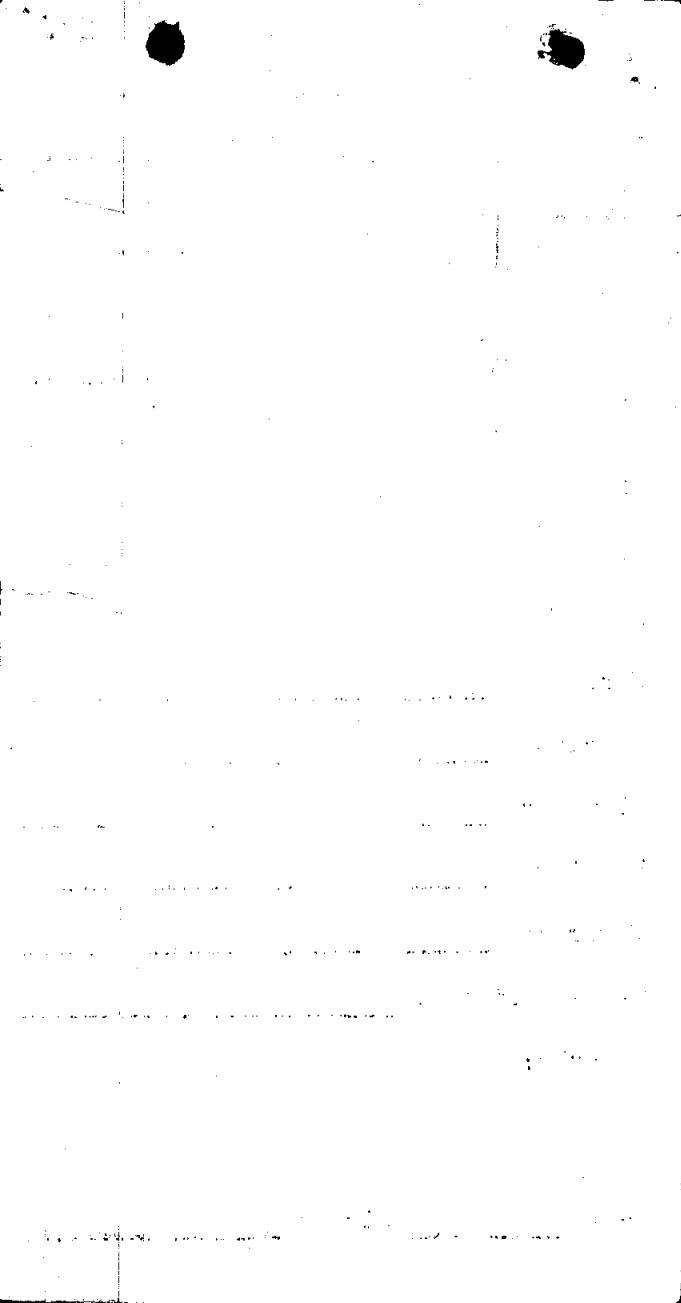
District

Metal poster on

Remarks:

Date 11/27/33 Signed J. D. Gillberg

2-5



Form 874-9—Revised May, 1912
U. S. Department of Agriculture
FOREST SERVICE

Ch. P. C. W. O. NATIONAL FOREST
CORNERS OF THE PUBLIC SURVEY

T. *148* R. *30* Mer. *52*

Section *Section* Corner common to Sections
31, 32, 6, and *5*

Corner consists of a *Cement block* in place
State condition *no cap, just cement*

Dimensions above ground *none* inches

Sketch grooves, letters, figures, or notches, on proper face or edge.

CARDINAL POSITION

DIAGONAL POSITION



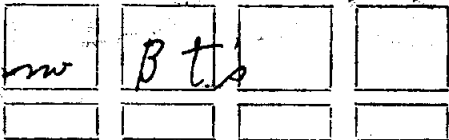
N W S E

NW SW SE NE

Mound of _____ is located _____

Pits are located _____

Sketch markings of Bearing Trees (or Rocks) in proper box and fill blanks below, giving bearings from Corner to Trees and Distances in Links.



Species _____

Diameter _____

Bearing _____

Distance _____

Do you believe this to be a genuine Land Office Corner? _____

If not, why? *There is no H. L. O. Cap
at cement mound but mound
is shaped as regular mound and*

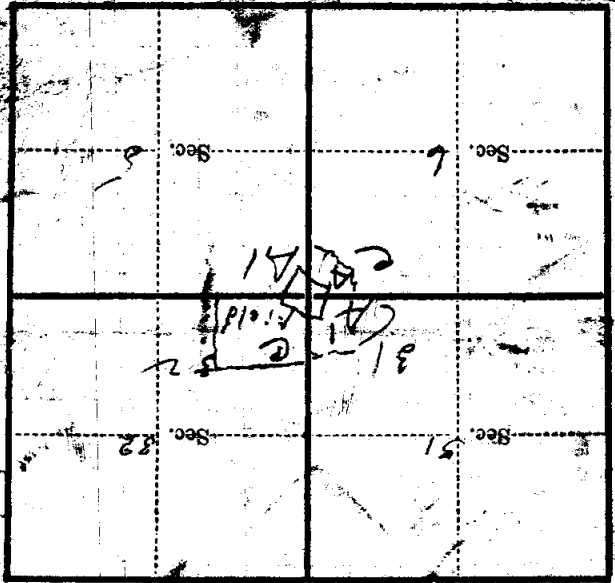
M. F. Murphy
(Signature)

(Date)

(Title)

Corner again.
Corner on road, 1/2 mile
west of road, with hole
in east side of fence on
branch and spring between
all other dimensions

Give any further facts which will aid in finding this
17 foot chains distant.
from which this Corner bears South
side of road
feet inches diameter, on the North
Metal Location Poster is on a stone post



(Make sketch of topography near Corner)

U. S. Department of Agriculture
FOREST SERVICE

Chippewa NATIONAL FOREST

CORNERS OF THE PUBLIC SURVEY

T. *148-147* R. *30* Mer. *52*

Section Corner common to Sections
31, 32, 5, and 6

Corner consists of a *cement post* (not) in place
State condition *✓*

Dimensions above ground *2* inches
Sketch grooves, letters, figures, or notches, on proper face or edge.

CARDINAL POSITION

DIAGONAL POSITION

--	--	--	--

N W S E

--	--	--	--

NW SW SE NE

Mound of _____ is located _____

Pits are located _____

Sketch markings of Bearing Trees (or Rocks) in proper box and fill blanks below, giving bearings from Corner to Trees and Distances in Links.

<i>No</i>	<i>B</i>	<i>T's</i>	

Species _____

Diameter _____

Bearing _____

Distance _____

Do you believe this to be a genuine Land Office Corner? _____

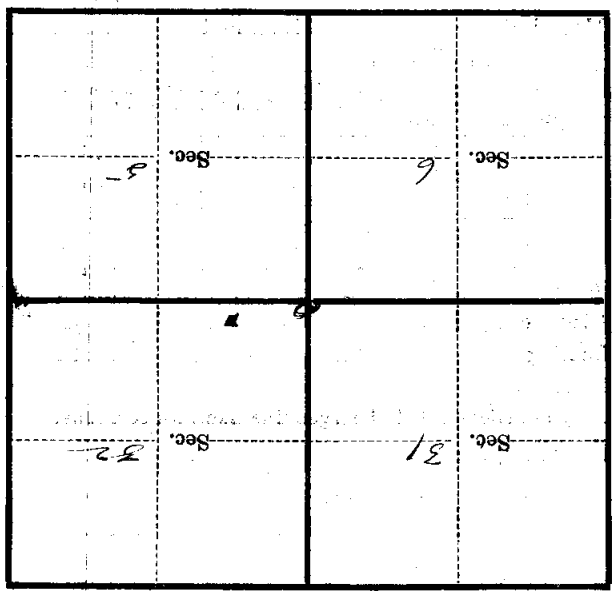
If not, why? _____

M. Murphy
(Signature)

10/9/34
(Date)

Corner again.
This is no doubt a part of a
road but several hundred
feet from the road

Give any further facts which will aid in finding this
corner distant 17' chains distant.
from which this Corner bears north
side of road
tree inches diameter, on the
Metal Location Poster is on a frame post



(Make sketch of topography near Corner)

T 111 R 30 Mer.