

U. S. Department of Agriculture
FOREST SERVICE

Posted 7/23

Chippewa NATIONAL FOREST

CORNERS OF THE PUBLIC SURVEY

T. 11/8 R. 24 Mer.

Corner common to Sections
30, 25, and

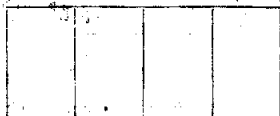
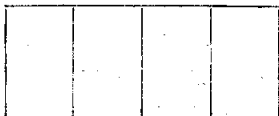
Corner consists of a 2 (not) in place
State condition

Dimensions above ground _____ inches

Sketch grooves, letters, figures, or notches, on proper face or edge.

CARDINAL POSITION

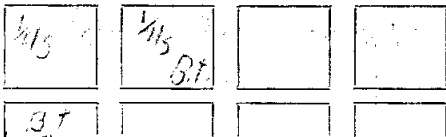
DIAGONAL POSITION



Mound of _____ is located _____

Pits are located _____

Sketch markings of Bearing Trees (or Rocks) in proper box and fill blanks below, giving bearings from Corner to Trees and Distances in Links.



Species 178201 111100 51100 111100

Diameter 3 1/2 4 1/2

Bearing N. 70 E N 80 E

Distance 66 LKS 84 LKS

Do you believe this to be a genuine Land Office Corner? No

If not, why? Because County Survey

David G. ...

(Signature)

Estimator

Mar 5, 35

(Date)

(Title)

Didn't find corner supposed
it to be in corner lead.

Corner again.

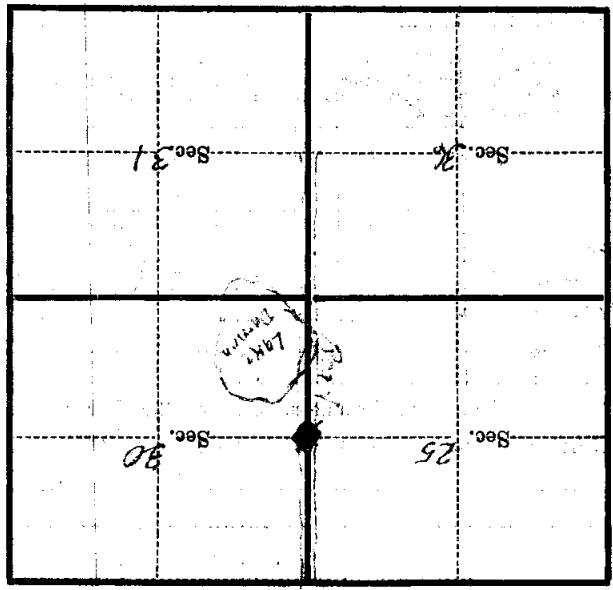
Give any further facts which will aid in finding this

66130 chains distant.

from which this corner bears S. 0° 0' W. Approximate
side of T.M.C.

tree 8" inches diameter, on the W

Metal Location Poster is on a *Aspen*



(Make sketch of topography near Corner)

T. 198N R. 29W 514 Mer.