

U. S. Department of Agriculture

FOREST SERVICE

C17

Chippewa NATIONAL FOREST

P

CORNERS OF THE PUBLIC SURVEY

T. 140 R. 221 5th Mer.

1/4 Corner common to Sections

3, and 2

Corner consists of a stone post (not) in place

State condition pair.

Dimensions above ground 36 inches

Sketch grooves, letters, figures, or notches, on proper face or edge.

CARDINAL POSITION

DIAGONAL POSITION

	1/4		1/4
	3 3		3 3


N W S E

NW SW SE NE

Mound of \_\_\_\_\_ is located \_\_\_\_\_

Pits are located \_\_\_\_\_

Sketch markings of Bearing Trees (or Rocks) in proper box and fill blanks below, giving bearings from Corner to Trees and Distances in Links.

1/4 3 3			
B. T.			

Species oak

Diameter 16"

Bearing 70°

Distance 56 ch.

Do you believe this to be a genuine Land Office Corner? Yes

If not, why? \_\_\_\_\_

7/17/35

(Date)

*W. Emmert*

(Signature)  
District Chief

(Title)

C-17

.....  
.....  
.....  
.....  
.....  
.....

Corner again.

Give any further facts which will aid in finding this

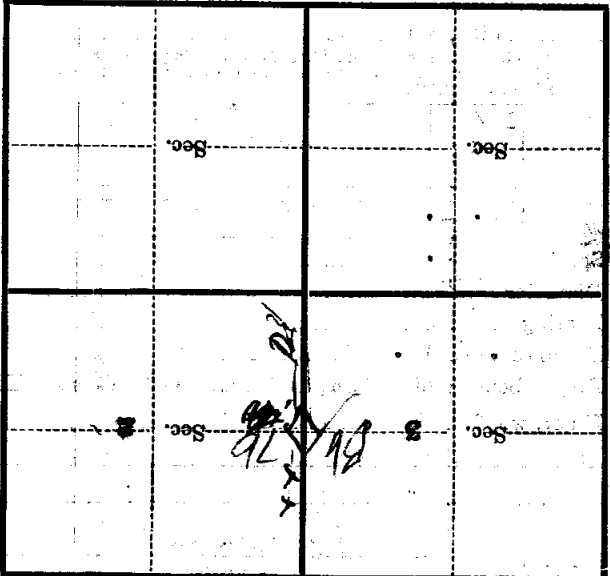
chains distant.

from which this Corner bears

side of

tree inches diameter, on the

Metal Location Poster is on a



(Make sketch of topography near Corner)

U. S. Department of Agriculture

FOREST SERVICE

C-17

NATIONAL FOREST

CORNERS OF THE PUBLIC SURVEY

T. 44N R. 26W Mer.

Corner common to Sections

1/4, 2/4, and

Corner consists of a 5 1/2 (not) in place

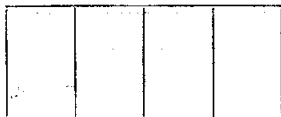
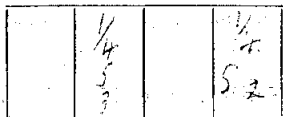
State condition Fair

Dimensions above ground 1 1/2 inches

Sketch grooves, letters, figures, or notches, on proper face or edge.

CARDINAL POSITION

DIAGONAL POSITION



N W S E

NW SW SE NE

Mound of is located

Pits are located

Sketch markings of Bearing Trees (or Rocks) in proper box and fill blanks below, giving bearings from Corner to Trees and Distances in Links.



Species BAL

Diameter

Bearing N 70° W

Distance 1 1/2

Do you believe this to be a genuine Land Office Corner? Yes

If not, why?

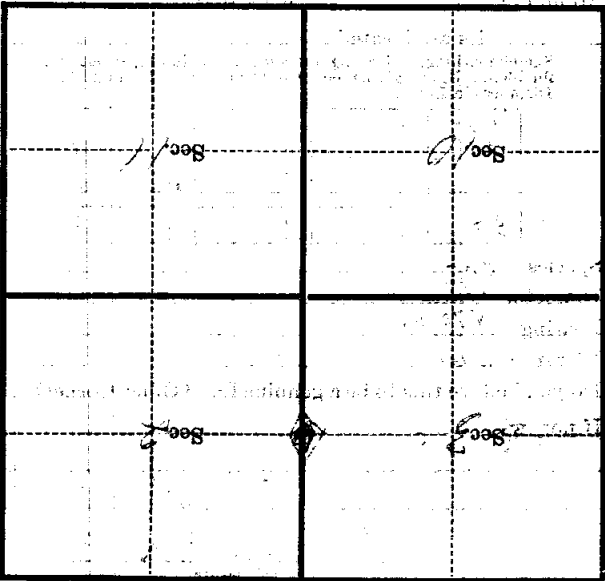
(Signature)

(Date)

(Title)

Faint, mostly illegible text at the top of the page, possibly bleed-through from the reverse side.

Corner again.  
Give any further facts which will aid in finding this  
chain's distant.  
From which this Corner bears *W*  
side of  
tree inches diameter, on the *W*  
Metal Location Poster is on a *W*



(Make sketch of topography near Corner)

U. S. Department of Agriculture  
FOREST SERVICE

C-17

Chippewa NATIONAL FOREST

CORNERS OF THE PUBLIC SURVEY

T. 148N R. 28W 5th Mer.

1/4 Corner common to Sections 3, and 2

Corner consists of a Spruce-Post (not) in place

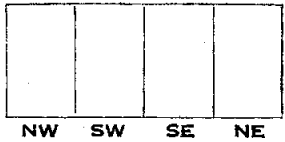
State condition Fair COND.

Dimensions above ground 36" inches

Sketch grooves, letters, figures, or notches, on proper face or edge.

CARDINAL POSITION

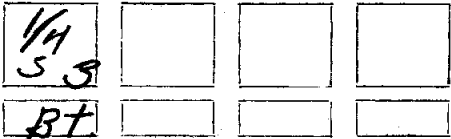
DIAGONAL POSITION



Mound of \_\_\_\_\_ is located \_\_\_\_\_

Pits are located \_\_\_\_\_

Sketch markings of Bearing Trees (or Rocks) in proper box and fill blanks below, giving bearings from Corner to Trees and Distances in Links.



Species Balsam  
 Diameter 16"  
 Bearing N70°W  
 Distance 56

Do you believe this to be a genuine Land Office Corner? *yes*  
If not, why? \_\_\_\_\_

(Signature)

7/17/35

(Title)

11

Corner again.

Give any further facts which will aid in finding this

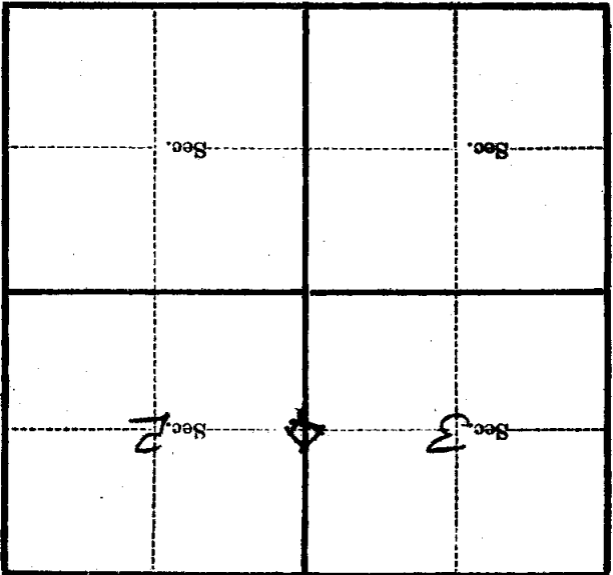
chains distant.

from which this Corner bears

side of

tree inches diameter, on the

Metal Location Poster is on a



(Make sketch of topography near Corner)

T. 148N R. 28W 6-7h Mer.

U. S. Department of Agriculture

FOREST SERVICE

C-17

Chippewa NATIONAL FOREST

CORNERS OF THE PUBLIC SURVEY

T. 148N R. 28W 5th Mer.

14 Corner common to Sections 3, and 2

Corner consists of a Spruce post (not) in place

State condition Fair cond.

Dimensions above ground 36 inches

Sketch grooves, letters, figures, or notches, on proper face or edge.

CARDINAL POSITION

DIAGONAL POSITION

	1/4 5 3		1/4 5/2
N	W	S	E

NW	SW	SE	NE

Mound of is located

Pits are located

Sketch markings of Bearing Trees (or Rocks) in proper box and fill blanks below, giving bearings from Corner to Trees and Distances in Links.

1/4 5 3			
BT			

Species Balsam

Diameter 16"

Bearing N70°W

Distance 56

Do you believe this to be a genuine Land Office Corner?

If not, why?

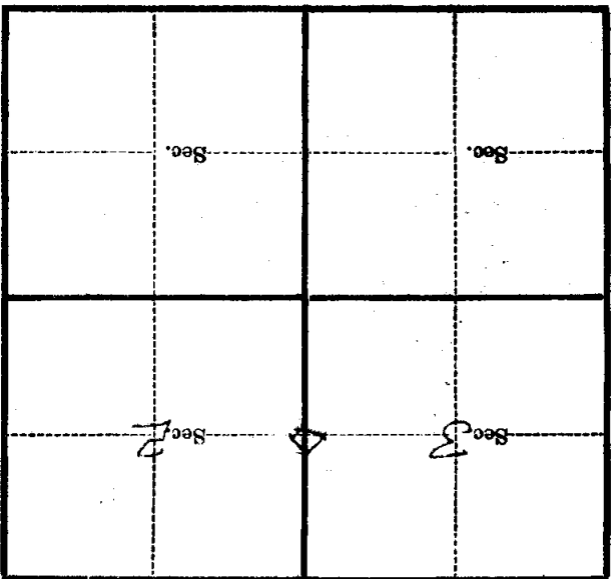
(Signature)

(Date) 7/17/35

(Title)

Corner again.

Metal Location Poster is on a tree inches diameter, on the side of from which this Corner bears chains distant. Give any further facts which will aid in finding this



(Make sketch of topography near Corner)

T. 148N R. 28W 5th Mer.