

Form 874-9—Revised May, 1918
U. S. Department of Agriculture
FOREST SERVICE

P N 9

Chippewa NATIONAL FOREST

CORNERS OF THE PUBLIC SURVEY

T. 143 N. R. 28 W. 5th Mer.
section

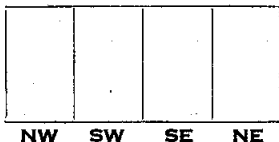
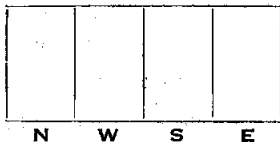
Corner common to Sections
17, 16, 30, and 21

Corner consists of a (not) in place
State condition placed by crew

Dimensions above ground inches
Sketch grooves, letters, figures, or notches, on proper face or edge.

CARDINAL POSITION

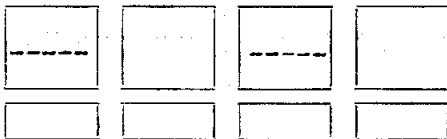
DIAGONAL POSITION



Mound of is located

Pits are located

Sketch markings of Bearing Trees (or Rocks) in proper box and fill blanks below, giving bearings from Corner to Trees and Distances in Links.



Species Oak Basswood

Diameter 12" 16"

Bearing S64°E S60°W

Distance 0.57 0.72

Do you believe this to be a genuine Land Office Corner? Yes

If not, why?

Harrison Adams
(Signature)

7/27/35
(Date)

Chief of party
(Title)

N-9

Lined writing area with horizontal dashed lines.

Corner again.

Give any further facts which will aid in finding this

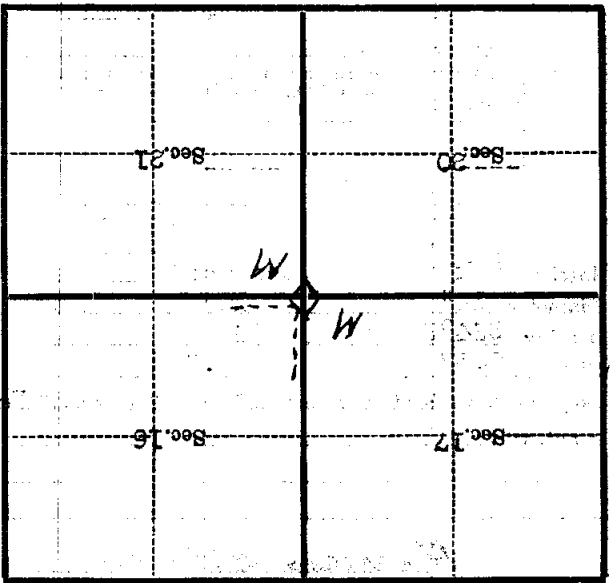
0.57 chains distant.

from which this Corner bears N 64° W

side of Tree

tree 12 inches diameter, on the Northwest

Metal Location Poster is on an Oak



(Make sketch of topography near Corner)

T. 148 N. R. 28 W. S. 4th Mer.

U. S. Department of Agriculture

FOREST SERVICE

N-9

Chippewa NATIONAL FOREST

CORNERS OF THE PUBLIC SURVEY

T. 148 R. 28 5th Mer.

Sec.

Corner common to Sections

16, 17, 20, and 21

Corner consists of a Elm (not) in place

State condition New - Good

Dimensions above ground 30" inches

Sketch grooves, letters, figures, or notches, on proper face or edge.

CARDINAL POSITION

DIAGONAL POSITION

--	--	--	--

S-17	S-20	S-21	S-16
------	------	------	------

N W S E

NW SW SE NE

Mound of is located

Pits are located

Sketch markings of Bearing Trees (or Rocks) in proper box and fill blanks below, giving bearings from Corner to Trees and Distances in Links.

S-21

S-20

S-17

B.T.

B.T.

B.T.

Species Oak Basswood D. Aspen

Diameter 10" 12" 12"

Bearing S. 116° E S. 46° W N. 57° E

Distance .77 .84 1.21

Do you believe this to be a genuine Land Office Corner? Yes.

If not, why?

Balke

(Signature)

Leader

10/29/36

(Date)

(Title)

Road 13 CHS E. OF CORNER
Mc. Timber type.

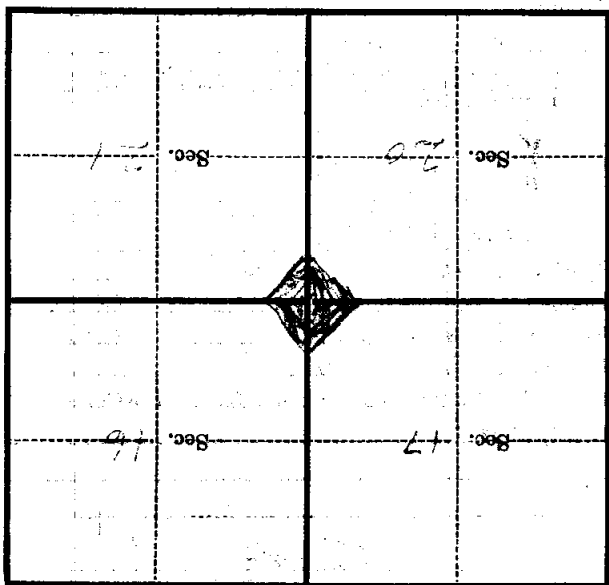
Corner again.

Give any further facts which will aid in finding this
chains distant.

from which this Corner bears
side of

tree inches diameter, on the

Metal Location Poster is on a



(Make sketch of topography near Corner)

T. 102 R. 22 Mer. 5-26

Form 874-B—Revised May, 1918
 U. S. Department of Agriculture
 FOREST SERVICE

N-9

Chippewa NATIONAL FOREST

CORNERS OF THE PUBLIC SURVEY

T. 14 R. 27 Mer.

Sec. _____ Corner common to Sections
16, 17, 20, and 21

Corner consists of a Iron (net) in place

State condition None

Dimensions above ground 3.0" inches

Sketch grooves, letters, figures, or notches, on proper face or edge.

CARDINAL POSITION

DIAGONAL POSITION

--	--	--	--

S-	S-	S-	S-
17	20	21	16

N W S E

NW SW SE NE

Mound of _____ is located _____

Pits are located _____

Sketch markings of Bearing Trees (or Rocks) in proper box and fill blanks below, giving bearings from Corner to Trees and Distances in Links.

S-
21

--

--

S-
17

B-T

B-T

--

B-T

Species Oak Redwood P. Aspen

Diameter 10 1/2 12 1/2 12 1/2

Bearing S. 11 E S. 40 E N. 5 E

Distance 2.77 5.4 1.21

Do you believe this to be a genuine Land Office Corner? YES

If not, why? _____

Chippewa

(Signature)

10/29/36

(Date)

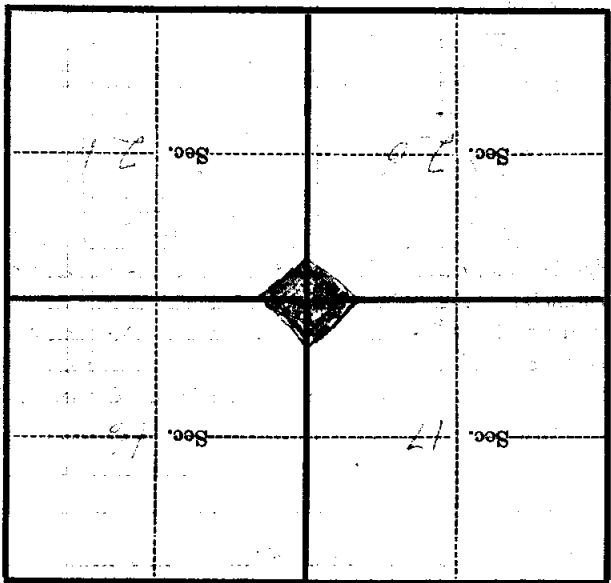
Leadman

(Title)

Good 13 C.H.S. E. OF CORNER
Mc. 111 627 100

Corner again.

Metal Location Poster is on a
tree inches diameter, on the
side of
from which this Corner bears
chains distant.
Give any further facts which will aid in finding this



(Make sketch of topography near Corner)

T. 108 R. 29 Mer.

U. S. Department of Agriculture
FOREST SERVICE

N-9

Chippewa NATIONAL FOREST
CORNERS OF THE PUBLIC SURVEY

T. 14BN R. 28W 3rd Mer.
Section — Corner common to Sections
16, 17, 20, and 21

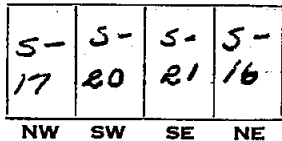
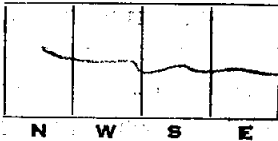
Corner consists of a Elm (not) in place
State condition New Good

Dimensions above ground 30" inches

Sketch grooves, letters, figures, or notches, on proper face or edge.

CARDINAL POSITION

DIAGONAL POSITION



Mound of _____ is located _____

Pits are located _____

Sketch markings of Bearing Trees (or Rocks) in proper box and fill blanks below, giving bearings from Corner to Trees and Distances in Links.

S-21

S-20

S-17

BT

BT

BT

Species Oak Basswood Aspen Betula

Diameter 10" 12" 12"

Bearing S-46°E S-40°W N52°E

Distance .77 .84 1.21

Do you believe this to be a genuine Land Office Corner? Yes

If not, why? _____

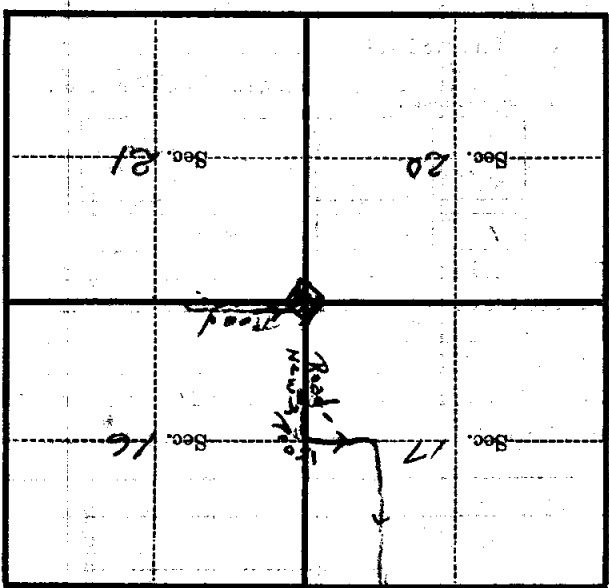
10/25/00
(Date)

Bolke
(Signature)
Chief of Party
(Title)

Corner again.
 North from Cor. Roads
 Graded out - Road to East
 is Graded with 18.00 ft. of
 Corner & Corner sets in a
 Mixed Hardwood Type of
 Stand -

Metal Location Poster is on a
 tree inches diameter, on the
 side of _____
 from which this Corner bears _____
 chains distant.

Give any further facts which will aid in finding this



(Make sketch of topography near Corner)

T. 118N R. 28W S. 7k - Mer.