

Form 874-9—Revised May, 1918
U. S. Department of Agriculture
FOREST SERVICE

~~PL-1~~

Chippewa NATIONAL FOREST

CORNERS OF THE PUBLIC SURVEY

T. 146 N. R. 28 W. 5 th Mer.

4 Corner common to Sections
13, and 18

Corner consists of a _____ (not) in place
State condition placed by crew

Dimensions above ground _____ inches
Sketch grooves, letters, figures, or notches, on proper face or edge.

CARDINAL POSITION

DIAGONAL POSITION

N	W	S	E

NW	SW	SE	NE

Mound of _____ is located _____

Pits are located _____

Sketch markings of Bearing Trees (or Rocks) in proper box and fill blanks below, giving bearings from Corner to Trees and Distances in Links.

$\frac{1}{4}$
Sec

--

$\frac{3}{4}$
Sec.

--

B. T.

--

B. T.

--

Species J. Pine _____ J. Pine _____

Diameter 10" _____ 14" _____

Bearing S. 41° E. _____ N. 61° W. _____

Distance 1.75 _____ 1.43 _____

Do you believe this to be a genuine Land Office Corner? Yes

If not, why? _____

Harrison Adams

(Signature)

7/25/35.
(Date)

Chief of party, C.C.C.
(Title)

L-1

Corner is in center of road.

Corner again.

Give any further facts which will aid in finding this

chains distant.

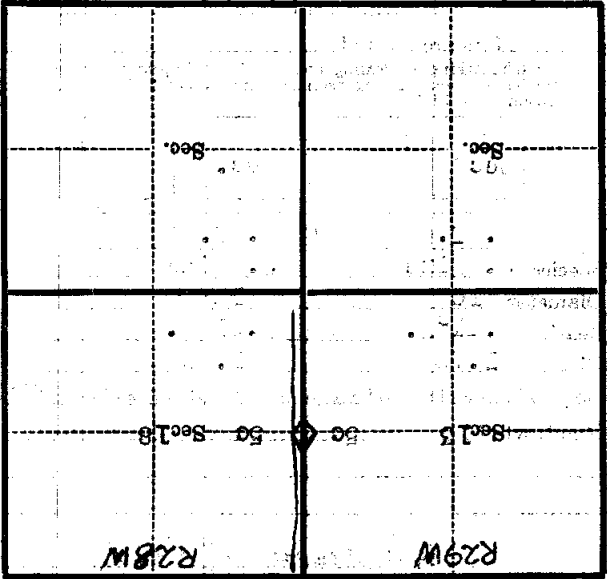
0.34

from which this Corner bears East

side of post

tree 8 inches diameter, on the East

Metal Location Poster is on a white post



(Make sketch of topography near Corner)

T. 146 N., R. 28 W., S. 18 Mer.

Form 874-B—Revised May, 1918
 U. S. Department of Agriculture
 FOREST SERVICE

Chippewa NATIONAL FOREST
CORNERS OF THE PUBLIC SURVEY

T. 148N R. 28W 5th Mer.

1/4 Section Corner common to Sections
12, 13, and 18—

Corner consists of a J. Pine Tree in Road Bed (not) in place

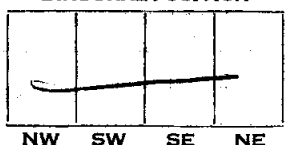
State condition New—

Dimensions above ground _____ inches

Sketch grooves, letters, figures, or notches, on proper face or edge.

CARDINAL POSITION

DIAGONAL POSITION



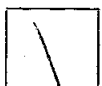
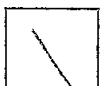
Mound of _____ is located _____

Pits are located _____

Sketch markings of Bearing Trees (or Rocks) in proper box and fill blanks below, giving bearings from Corner to Trees and Distances in Links.

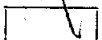
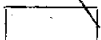
R 29
5-
13

5-
18
TR 28



B.T.

B.T.



Species J. Pine J. Pine

Diameter 10" 10"

Bearing N 59° W 3-45° E

Distance 1.83 1.65

Do you believe this to be a genuine Land Office Corner? No

If not, why? Cor- B.T- Scribed by County Surveyor

Bolke

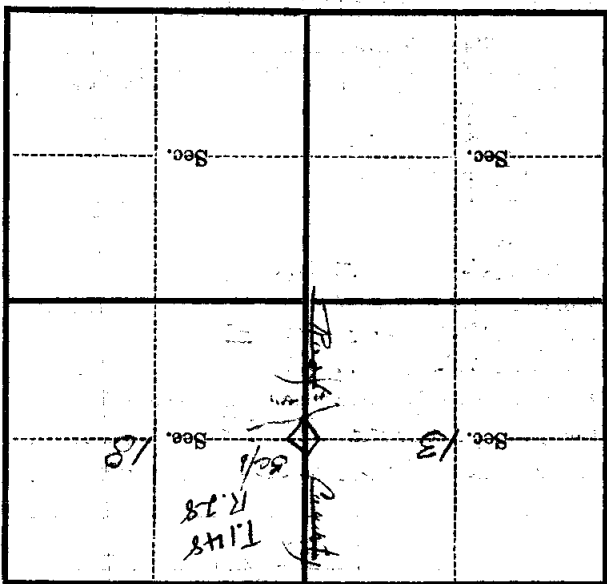
(Signature)

Leader

(Date)

(Title)

Metal Location Poster is on a tree inches diameter, on the side of from which this Corner bears chains distant. Give any further facts which will aid in finding this Corner again.



(Make sketch of topography near Corner)

T. 148 R. 28 Mer.

U. S. Department of Agriculture

FOREST SERVICE

L-1

Chippewa NATIONAL FOREST

CORNERS OF THE PUBLIC SURVEY

T. 148 R. 28 5th Mer.

1/4 Corner common to Sections

13, and 12
Corner consists of a stone in (not) in place

State condition new

Dimensions above ground _____ inches

Sketch grooves, letters, figures, or notches, on proper face or edge.

CARDINAL POSITION

DIAGONAL POSITION

--	--	--	--

N W S E

--	--	--	--

NW SW SE NE

Mound of _____ is located _____

Pits are located _____

Sketch markings of Bearing Trees (or Rocks) in proper box and fill blanks below, giving bearings from Corner to Trees and Distances in Links.

R. 29
S-13

R. 28
S-18

--

--

B.T.

B.T.

--

--

Species W. Pine W. Pine

Diameter 10" 10"

Bearing N. 59° W S. 45° E

Distance 1.83 1.63

Do you believe this to be a genuine Land Office Corner? Yes

If not, why? Case B.T. scribed by
County surveyor

B. A. L.
(Signature)

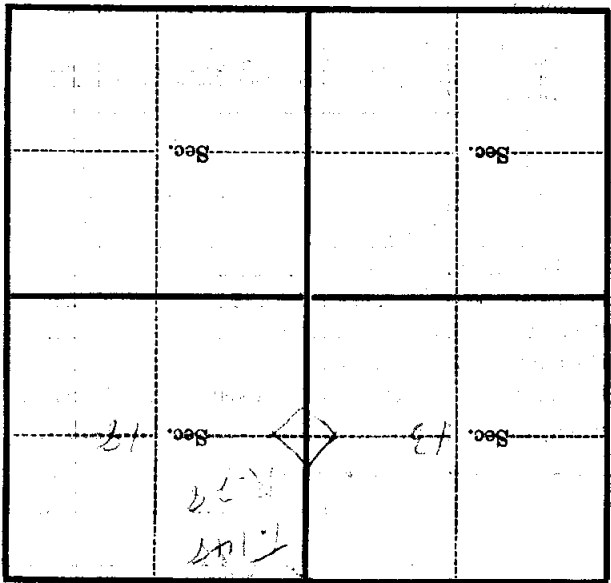
(Date)

Leader
(Title)

Lined writing area with horizontal dashed lines.

Corner again.

Give any further facts which will aid in finding this
chains distant.
From which this Corner bears
side of
tree inches diameter, on the
Metal Location Poster is on a



(Make sketch of topography near Corner)

U. S. Department of Agriculture

FOREST SERVICE

L-1

Chippewa NATIONAL FOREST

CORNERS OF THE PUBLIC SURVEY

T. 101 R. 12 Mer. 5-1

1/4 Corner common to Sections

12, 13, and 14

Corner consists of a 1. Pine tree in (not) in place Road

State condition New

Dimensions above ground _____ inches

Sketch grooves, letters, figures, or notches, on proper face or edge.

CARDINAL POSITION

DIAGONAL POSITION

--	--	--	--

N W S E

--	--	--	--

NW SW SE NE

Mound of _____ is located _____

Pits are located _____

Sketch markings of Bearing Trees (or Rocks) in proper box and fill blanks below, giving bearings from Corner to Trees and Distances in Links.

B.T. S-13	B.T. S-13		
B.T.	B.T.		

Species 1. Pine 2. Pine

Diameter 10" 10"

Bearing N. 50° W. S. 45° E.

Distance 0.87 1.63

Do you believe this to be a genuine Land Office Corner? No

If not, why? Cor. B.T. removed by

county surveyor

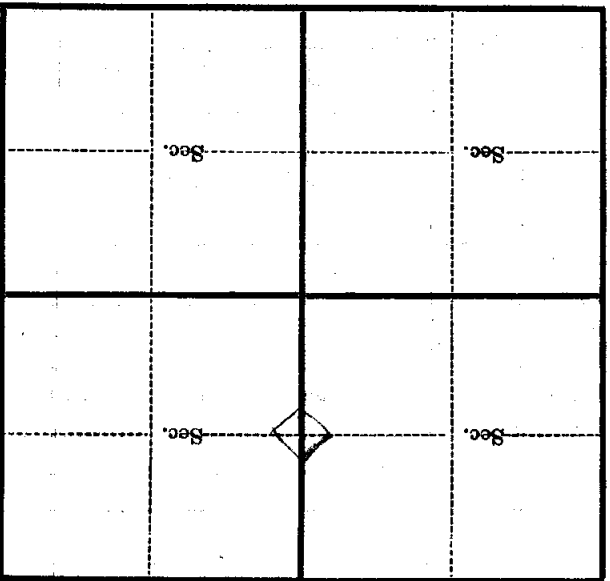
B. Baker
(Signature)

(Date)

(Title)

Metal Location Poster is on a
 tree _____ inches diameter, on the
 side of _____
 from which this Corner bears _____
 chains distant.

Give any further facts which will aid in finding this
 Corner again.



(Make sketch of topography near Corner)

T. 148 R. 7 E. S. 26 Mer.