

U. S. Department of Agriculture  
FOREST SERVICE

2-15

Whitewater NATIONAL FOREST

CORNERS OF THE PUBLIC SURVEY

T. 145N R. 21W S. 7E Mer.

41 Corner common to Sections  
....., ....., and 3

Corner consists of a POST (not) in place  
State condition Fair

Dimensions above ground 40" inches

Sketch grooves, letters, figures, or notches, on proper face or edge.

CARDINAL POSITION

DIAGONAL POSITION

--	--	--	--

N W S E

	<u>40"</u>		
--	------------	--	--

NW SW SE NE

Mound of ..... is located .....

Pits are located .....

Sketch markings of Bearing Trees (or Rocks) in proper box and fill blanks below, giving bearings from Corner to Trees and Distances in Links.


Species Juniper

Diameter 4"

Bearing S 20° W

Distance 20'

Do you believe this to be a genuine Land Office Corner? Yes

If not, why? .....

Adrian J. Jones  
(Signature)

7/5/35  
(Date)

Adrian J. Jones  
(Title)

10

Corner again.

Give any further facts which will aid in finding this

2511715 chains distant.

from which this Corner bears

S 81° E

side of

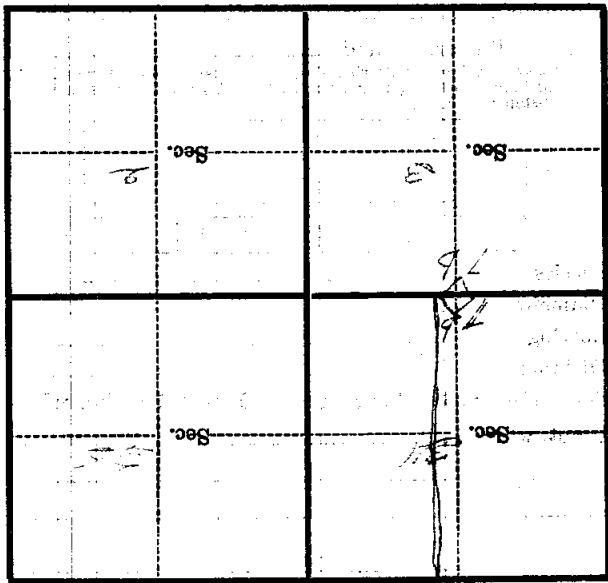
Tree

tree 6 inches diameter, on the

S 81° E

Metal Location Poster is on a

Tamarack



(Make sketch of topography near Corner)

T. 118 N. R. 21 W. 5 T. 4 Mer.

Form 874-3—Revised May, 1918  
 U. S. Department of Agriculture  
 FOREST SERVICE

215  
 P

Chippewa NATIONAL FOREST

CORNERS OF THE PUBLIC SURVEY

T. 148 N. R. 27 W. 5th Mer.

$\frac{1}{4}$  Corner common to Sections  
 \_\_\_\_\_, \_\_\_\_\_, \_\_\_\_\_, and 3

Corner consists of a post (not) in place

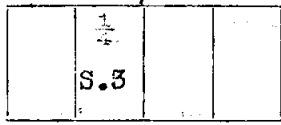
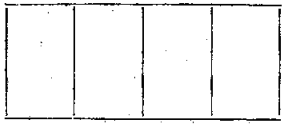
State condition Fair

Dimensions above ground 40 inches

Sketch grooves, letters, figures, or notches, on proper face or edge.

CARDINAL POSITION

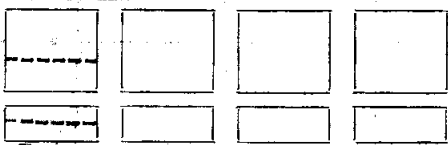
DIAGONAL POSITION



Mound of \_\_\_\_\_ is located \_\_\_\_\_

Pits are located \_\_\_\_\_

Sketch markings of Bearing Trees (or Rocks) in proper box and fill blanks below, giving bearings from Corner to Trees and Distances in Links.



Species Tan.

Diameter 8"

Bearing S. 50° W.

Distance 45

Do you believe this to be a genuine Land Office Corner? Yes

If not, why? \_\_\_\_\_

*Harrison Adams*

(Signature)

Chief of party, C. C. C.

(Title)

8/8/35.

(Date)

Corner again.

Give any further facts which will aid in finding this

classus distant.

0.25

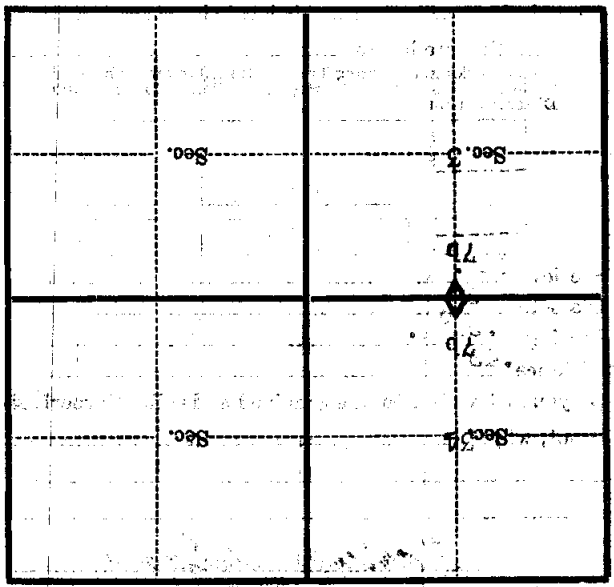
From which this Corner bears S. 81° E.

side of

tree

tree 6 inches diameter, on the Southeast

Metal Location Poster is on a



(Make sketch of topography near corner)

T. 148 N. R. 27 W. S. 4th Mer.