

Form 874-0—Revised May, 1918  
U. S. Department of Agriculture  
FOREST SERVICE

221  
Posted

Chippewa NATIONAL FOREST  
CORNERS OF THE PUBLIC SURVEY

T. 148 R. 26 5th Mer.

Section Corner common to Sections  
35, 36, 1, and 2

Corner consists of a Wooden Post ( ) in place  
State condition Good

Dimensions above ground 36 inches  
Sketch grooves, letters, figures, or notches, on proper face or edge.

CARDINAL POSITION

DIAGONAL POSITION

--	--	--	--

N W S E

--	--	--	--

NW SW SE NE

Mound of \_\_\_\_\_ is located \_\_\_\_\_

Pits are located \_\_\_\_\_

Sketch markings of Bearing Trees (or Rocks) in proper box and  
fill blanks below, giving bearings from Corner to Trees and  
Distances in Links.


Species \_\_\_\_\_

Diameter \_\_\_\_\_

Bearing \_\_\_\_\_

Distance \_\_\_\_\_

Do you believe this to be a genuine Land Office Corner? Yes

If not, why? \_\_\_\_\_

(S) Verne Grilley

(Signature)

5/16/35  
(Date)

Field Asst.  
(Title)

South of Corner of Rail  
Fence 18 Paces

Corner again.

Give any further facts which will aid in finding this

18 Paces distant.

from which this Corner bears

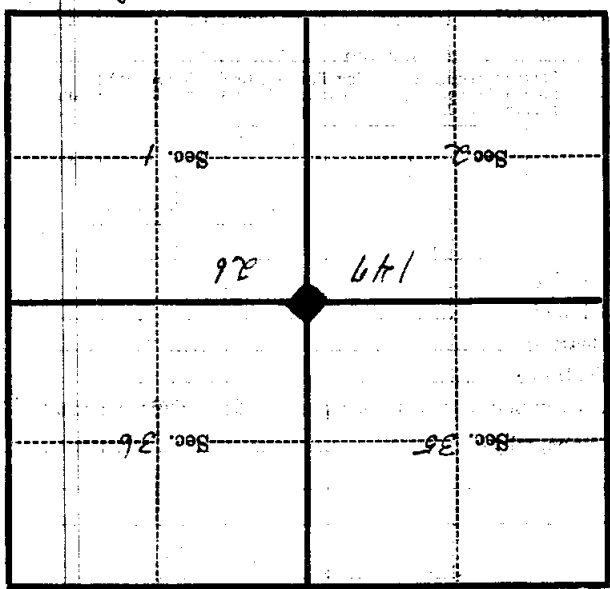
South

side of Post

inches diameter, on the

South

Metal Location Poster is on a Fence Post



(Make sketch of topography near Corner)

T. 146 R. 26 S. 4 Mer. Z-21