

Chippewa Wolf Hunt 217

T 148 R 26

Q

Section Cor. Comm. ---

34, 35, (148-26)

2, 3 (147-26)

Stake in fair condition 16"

Diagonal Position

NW NE SW SE

34 35 3 2

148
R 26
534

BT

Cedar 12" diam

NW

70 Lks.

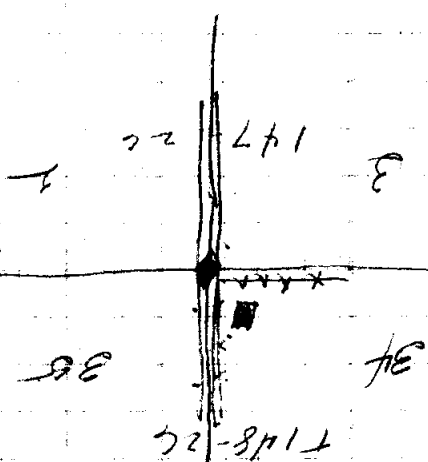
yes

Paul J. Stewart
Pearly Chief

11-28-33

These locations (Parker or
Horse Past. 10' N of Corner
Marked and identify it.

~~poated~~



T 148-24

2-17