

Form 874-9—Revised May, 1918
U. S. Department of Agriculture
FOREST SERVICE

59
parted

Map...

NATIONAL FOREST

CORNERS OF THE PUBLIC SURVEY

T. *14 N* R. *25 W* Mer. *522*

Corner common to Sections *5*, *9*, *13*, and *17*

Corner consists of a _____ (not) in place
 State condition _____

Dimensions above ground _____ inches.

Sketch grooves, letters, figures, or notches, on proper face or edge.

CARDINAL POSITION

DIAGONAL POSITION

N	W	S	E

NW	SW	SE	NE

Mound of _____ is located _____

Pits are located _____

Sketch markings of Bearing Trees (or Rocks) in proper box and fill blanks below, giving bearings from Corner to Trees and Distances in Links.

<i>T146</i> <i>R 112</i> <i>51</i>			
<i>5T</i>			

Species _____

Diameter *10 1/2* _____

Bearing _____

Distance _____

Do you believe this to be a genuine Land Office Corner? *Yes*

If not, why? _____

W. A. Anderson

(Signature)

Estimator

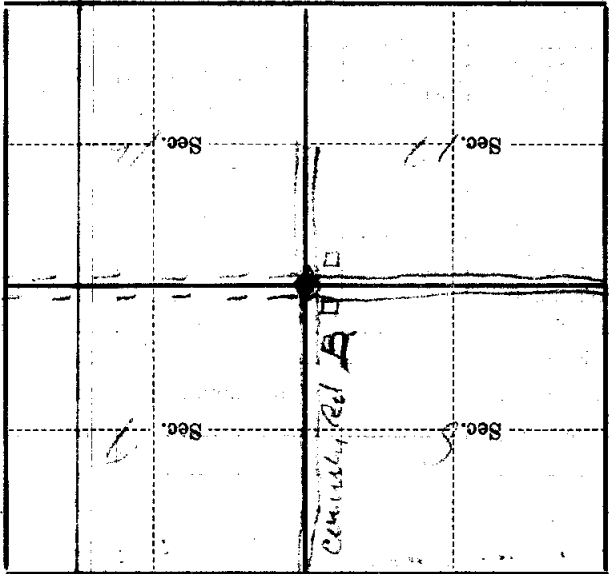
(Title)

11-1-1918

(Date)

NE 1/4 NE 20, T. 1 N., R. 2 E.
MOUNTAIN VIEW
KODAK BUILDING
ROAD CROSSING - 400 ft.
Corner again.

Metal Location Poster is on a
tree _____ inches diameter, on the
side of _____
from which this Corner bears _____
chains distant.



(Make sketch of topography near Corner)

T. 1 N. R. 2 E. Mer.