

Give any further facts which will aid in finding this corner again.

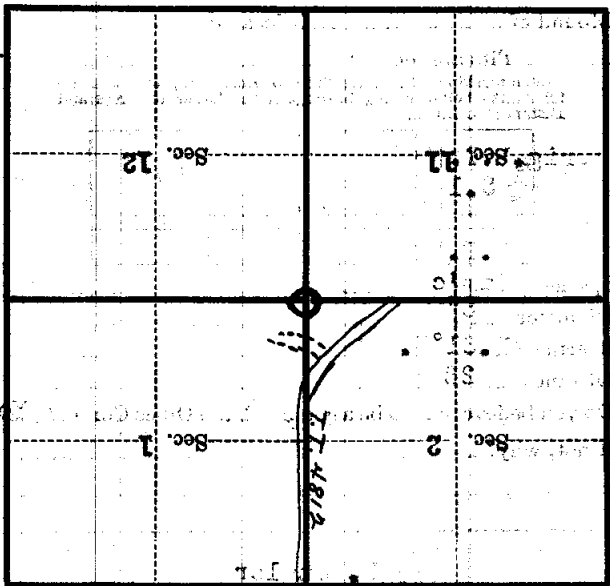
0.56 chains distant.

from which this corner bears N. 72° W.

side of tree

tree 7 inches diameter, on the West

Metal Location Poster is on a Tam'o



(Make sketch of topography near corner)

T. 147 N. R. 31 W. 5th P. Mer. E-21

U. S. Department of Agriculture

FOREST SERVICE

Chippewa *already posted* NATIONAL FOREST

CORNERS OF THE PUBLIC SURVEY

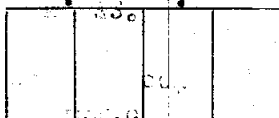
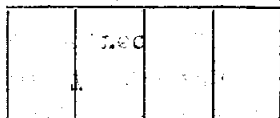
T. 147 N. R. 31 W. 5th P. Mer.

Section Corner common to Sections
1, 2, 11, and 12Corner consists of a Aspen Post (~~not~~) in placeState condition GoodDimensions above ground 30 inches

Sketch grooves, letters, figures, or notches, on proper face or edge.

CARDINAL POSITION

DIAGONAL POSITION



Mound of _____ is located _____

Pits are located _____

Sketch markings of Bearing Trees (or Rocks) in proper box and fill blanks below, giving bearings from Corner to Trees and Distances in Links.

Orig. B.T. $\frac{1}{4}$ S. 1			
B.T.			

Species Tam^oDiameter 8"Bearing N. 61° E.Distance 28Do you believe this to be a genuine Land Office Corner? Yes

If not, why? _____

K. Styler

(Signature)

Compass Man

(Title)

1/17/38

(Date)